

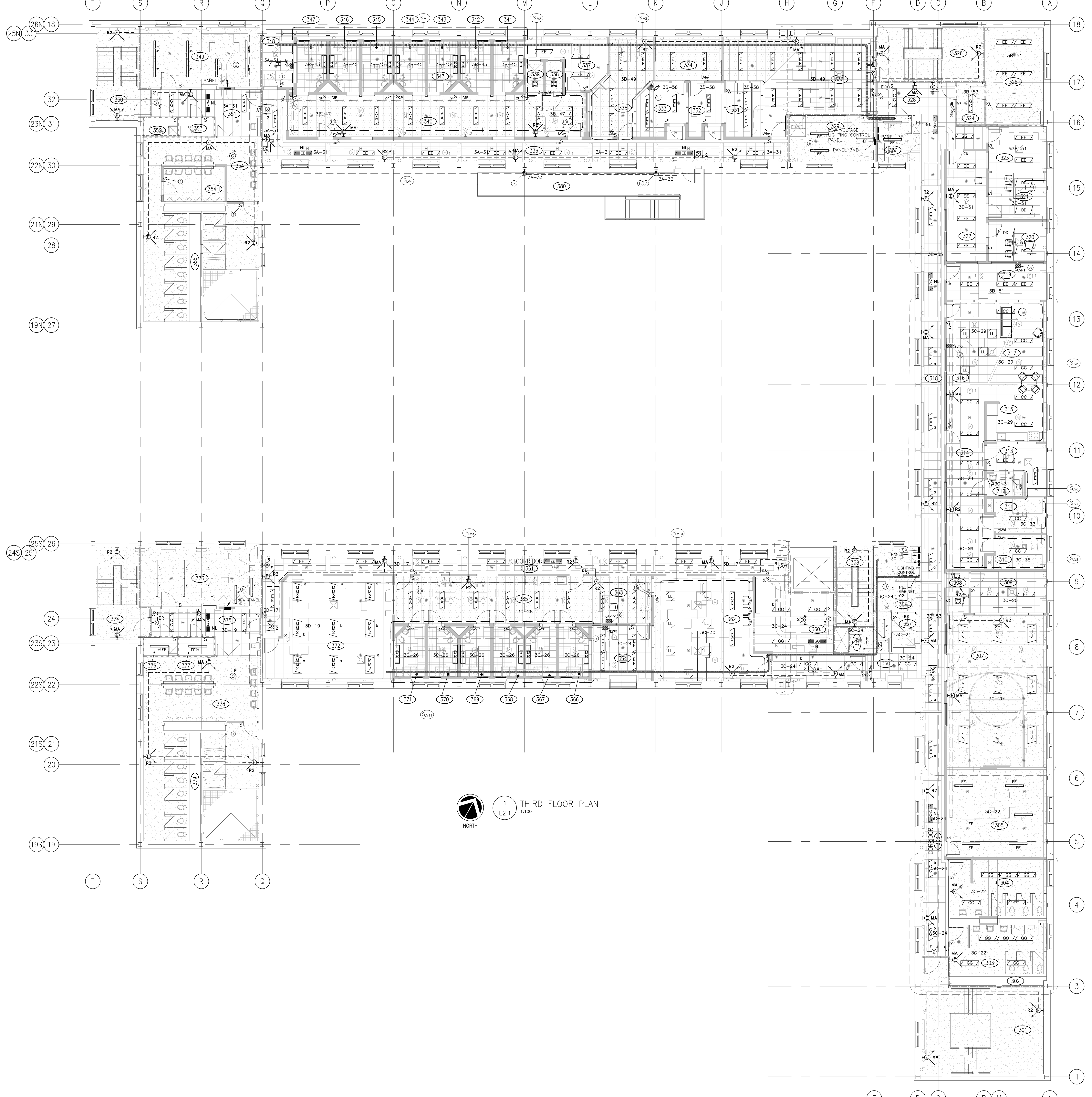


ASSOCIATION OF PROFESSIONAL ENGINEERS
 OF SASKATCHEWAN
 CERTIFICATE OF AUTHORIZATION
RITENBURG & ASSOCIATES LTD.

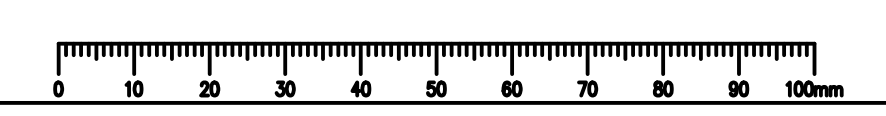
NUMBER 52
 PERMISSION TO CONSULT HELD BY:
 DISCIPLINE: ELECTRICAL SASK. REG. NO. 11782 SIGNATURE: [Signature]

- GENERAL NOTES:**
- EMERGENCY LIGHTING FOR STAIRWELLS SHALL BE FED FROM LOCAL BATTERY PACKS. CONNECT TO EXISTING STAIRWELL LIGHTING CIRCUIT.
 - COORDINATE MOUNTING OF EXIT SIGNS WITH BULKHEADS AND ADJUST MOUNTING HEIGHT TO KEEP EXIT SIGNS AS HIGH AS POSSIBLE.
 - COORDINATE MOUNTING OF EMERGENCY BATTERY UNIT WITH MECHANICAL DUCTS TO MAINTAIN ILLUMINATION FOR PATH OF EGRESS. MOUNT AS HIGH AS POSSIBLE UNDER BULKHEADS AND BEAMS.
 - IN ROOMS WHERE NO CIRCUIT NUMBERS ARE SHOWN THE CONTRACTOR SHALL USE EXISTING BRANCH CIRCUITS FED FROM NEW PANELS. REFER TO PANEL SCHEMATICS FOR EXISTING BRANCH CIRCUITS.

- DRAWING NOTES:**
- PROVIDE LOW VOLTAGE LIGHTING CONTROL TOUCH SCREEN AND INTERFACE WITH LIGHTING CONTROL MONITOR IN ROOM 333. TOUCH SCREEN SHALL OPERATE AS PRIORITY CONTROL #1. REFER TO SCHEMATIC DETAIL FOR ZONE CONTROL. LIGHTING CONTROL TOUCH SCREEN SHALL OVER RIDE LIGHTING SETTINGS INITIATED AT THE CONTROL MONITOR IN ROOM 333 FOR EACH LOW VOLTAGE ZONE.
 - PROVIDE LOW VOLTAGE LIGHTING CONTROL MODULES AND INTERFACE WITH ROOM 333 MONITOR PLUS'S. SHALL OPERATE AS A SLAVE CONTROL PRIORITY #2 TO TOUCH SCREEN IN ROOM 348. REFER TO SCHEMATIC DETAIL FOR ZONE CONTROL.
 - PROVIDE LOW VOLTAGE LIGHTING CONTROL PUSH BUTTON CONTROL PANEL AND INTERFACE WITH LIGHTING CONTROL PANEL IN ROOM 316. LIGHTING CONSOLE SHALL OPERATE AS PRIORITY CONTROL #1. PUSH BUTTON CONTROL SHALL OVER RIDE LIGHTING SETTINGS INITIATED AT THE CONTROL PANEL IN ROOM 316. REFER TO SCHEMATIC DETAIL FOR ZONE CONTROL.
 - PROVIDE LOW VOLTAGE LIGHTING CONTROL PUSH BUTTON CONTROL PANEL AND INTERFACE WITH LIGHTING CONTROL PANEL IN ROOM 319. LIGHTING CONSOLE SHALL OPERATE AS A SLAVE PRIORITY CONTROL #2. REFER TO SCHEMATIC DETAIL FOR ZONE CONTROL.
 - PROVIDE LOW VOLTAGE LIGHTING CONTROL PUSH BUTTON CONTROL PANEL AND INTERFACE WITH LIGHTING CONTROL PANEL IN ROOM 363. LIGHTING CONSOLE SHALL OPERATE AS PRIORITY CONTROL #1. PUSH BUTTON CONTROL SHALL OVER RIDE LIGHTING SETTINGS INITIATED AT THE CONTROL PANEL IN ROOM 363. REFER TO SCHEMATIC DETAIL FOR ZONE CONTROL.
 - PROVIDE LOW VOLTAGE LIGHTING CONTROL PUSH BUTTON CONTROL PANEL AND INTERFACE WITH LIGHTING CONTROL PANEL IN ROOM 364. LIGHTING CONSOLE SHALL OPERATE AS A SLAVE PRIORITY CONTROL #2. REFER TO SCHEMATIC DETAIL FOR ZONE CONTROL.
 - MOUNT EXTERIOR LED WALL PACK UP 933mm ABOVE FINISHED GRADE. FIXTURE SHALL BE CONTROLLED BY LOCAL SWITCH AT EXIT TO CATWALK. STUB CONDUIT INTO ACCESSIBLE CEILING SPACE OF THE THIRD FLOOR.
 - REFER TO SITE PLAN FOR EXTERIOR FENCE LIGHTING. CONNECT SITE LIGHTING FOR FENCE AND CATWALK TO SWITCH AT NOTE #7.
 - COORDINATE FINAL MOUNTING WITH MECHANICAL DUCTWORK AND EQUIPMENT.
 - PROVIDE LAMECOID LABEL ON COVER "HOUSE KEEPERS".
 - WALL MOUNTED NEXUS AREA CONTROLLER ROUTER HARD WIRED VIA ETHERNET TO THE AREA CONTROLLER.
 - WALL MOUNTED NEXUS AREA CONTROLLER. PROVIDE 120 VOLT RECEPTACLE ADJACENT TO UNIT.
 - MOUNT FIXTURE 150mm ABOVE TOP OF WINDOW FRAME.



1 THIRD FLOOR PLAN
 E2.1
 1:100



Revision/Revisie	Description/Description	Date/Date

Project title/Titre du projet
SHARED LEARNING FACILITY
 REGINA, SK

Approved by/Approve par
 Designed by/Concept par
BDK,SBK,GTK
 Drawn by/Dessine par
GTK
 Project Manager/Administrateur de Projets
AC
 Architectural and Engineering Resources Manager/
 Ressources Architecturales et de Directeur d'Ingénierie

Drawing title/Titre du dessin
THIRD FLOOR
LIGHTING PLAN

Project No./No. du projet
05/2013
 Sheet/Fauille
E2.1
 Revision no./
 La Révision
 No.