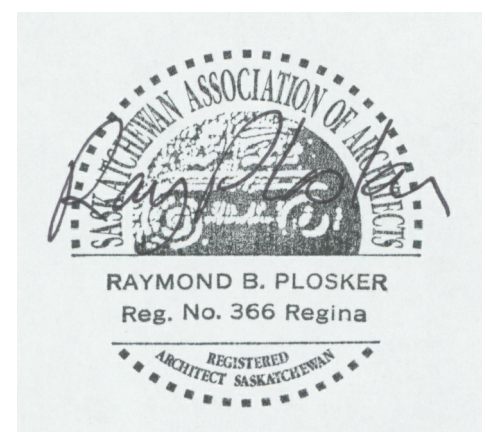


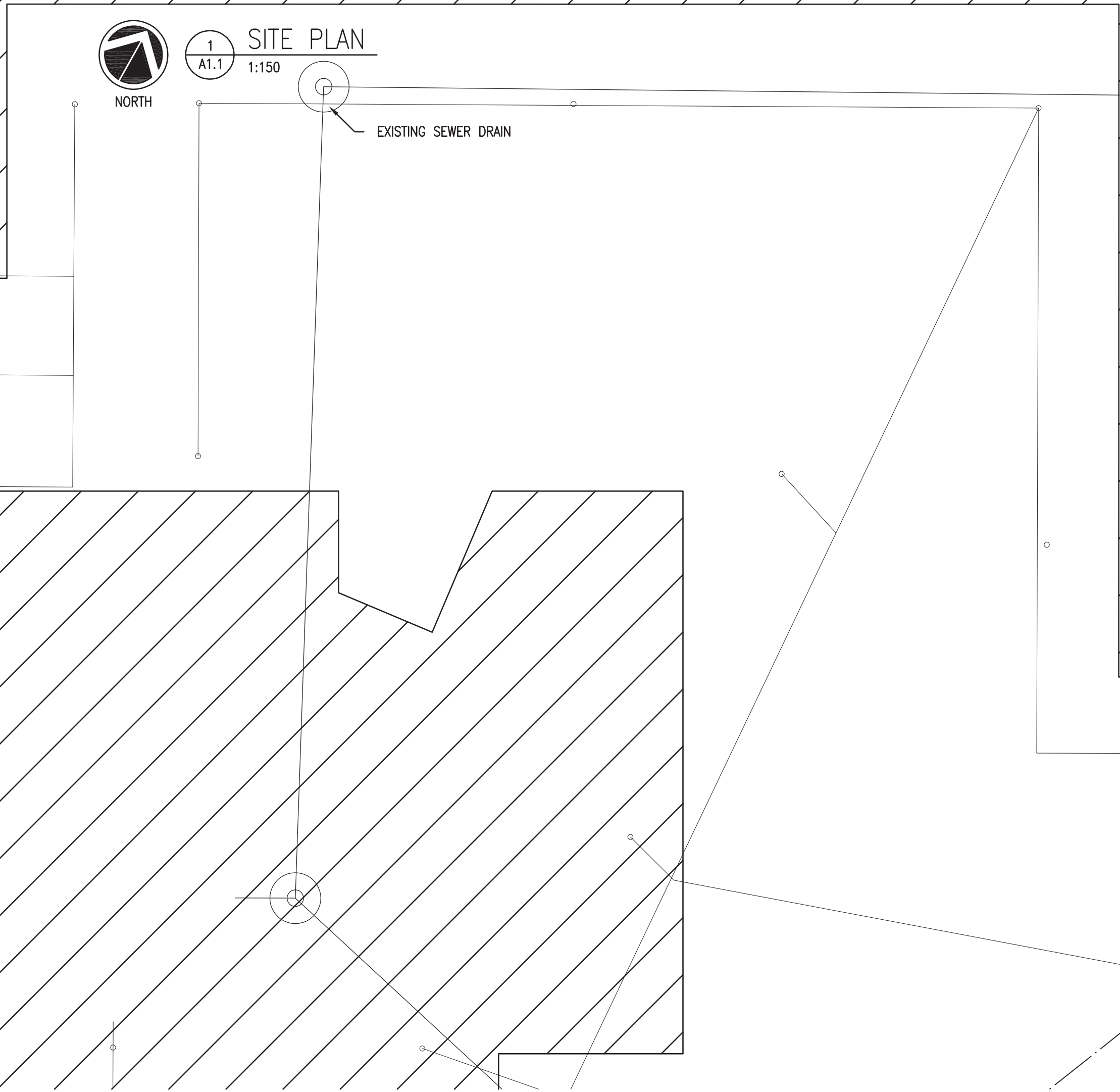
**SEPW Architecture Inc.**

100 - 3725 Pasqua Street, Regina, SK, S4S 0R8 (306) 969-2255  
 100 - 3718 Victoria Plaza, Saskatoon, SK, S7P 0A6 (306) 652-6457  
 Website: www.sepw.ca



LEGEND	
—	WATER MAIN
— HV-SV	HIGH VOLTAGE DISTRIBUTION
— P	POWER DISTRIBUTION
— S	STORM SEWER
— I	IRRIGATION LINES AND HEADS
— SS	SANITARY SEWER
— F	FIBRE LINES

- GENERAL NOTES**
1. REINSTATE ALL AFFECTED GRASSED AREAS USING SOD AND TOPSOIL BASE. ENSURE POSITIVE DRAINAGE AWAY FROM BUILDING.
  2. REINSTATE AFFECTED ASPHALT AREAS USING 65mm ASPHALT OVER COMPACTED BASE. PROTECT EXISTING ASPHALT AREAS FROM DAMAGE BY EQUIPMENT. REPAIR ALL DAMAGE CAUSED AS A RESULT OF THIS WORK.
  3. ALL UNDERGROUND SERVICES SHOWN ARE BASED ON EXISTING RECORD DRAWINGS PROVIDED BY THE OWNER AND HAVE NOT BEEN SITE VERIFIED. LOCATE, VERIFY AND PROTECT ALL UNDERGROUND SERVICES PRIOR TO COMMENCEMENT OF WORK.



**DO NOT SCALE DRAWINGS**

Revision/Revisions	Description/Description	Date/Date
0	ISSUED FOR TENDER	2014-01-17

Client/client

Project title/Titre du projet  
**SHARED LEARNING FACILITY  
 REGINA, SK**

Approved by/Approuvé par  
 Designed by/Concept par  
 RP  
 Drawn by/Dessiné par  
 RHM/RP  
 Project Manager/Administrateur de Projets  
 AC  
 Architectural and Engineering Resources Manager/  
 Ressources Architectural et de Directeur d'Ingénierie

Drawing title/Titre du dessin  
**SITE PLAN**

Project No./No. du projet	Sheet/Feuille	Revision no./ La Révision no.
<b>05/2013</b>	<b>A1.1</b>	<b>0</b>

