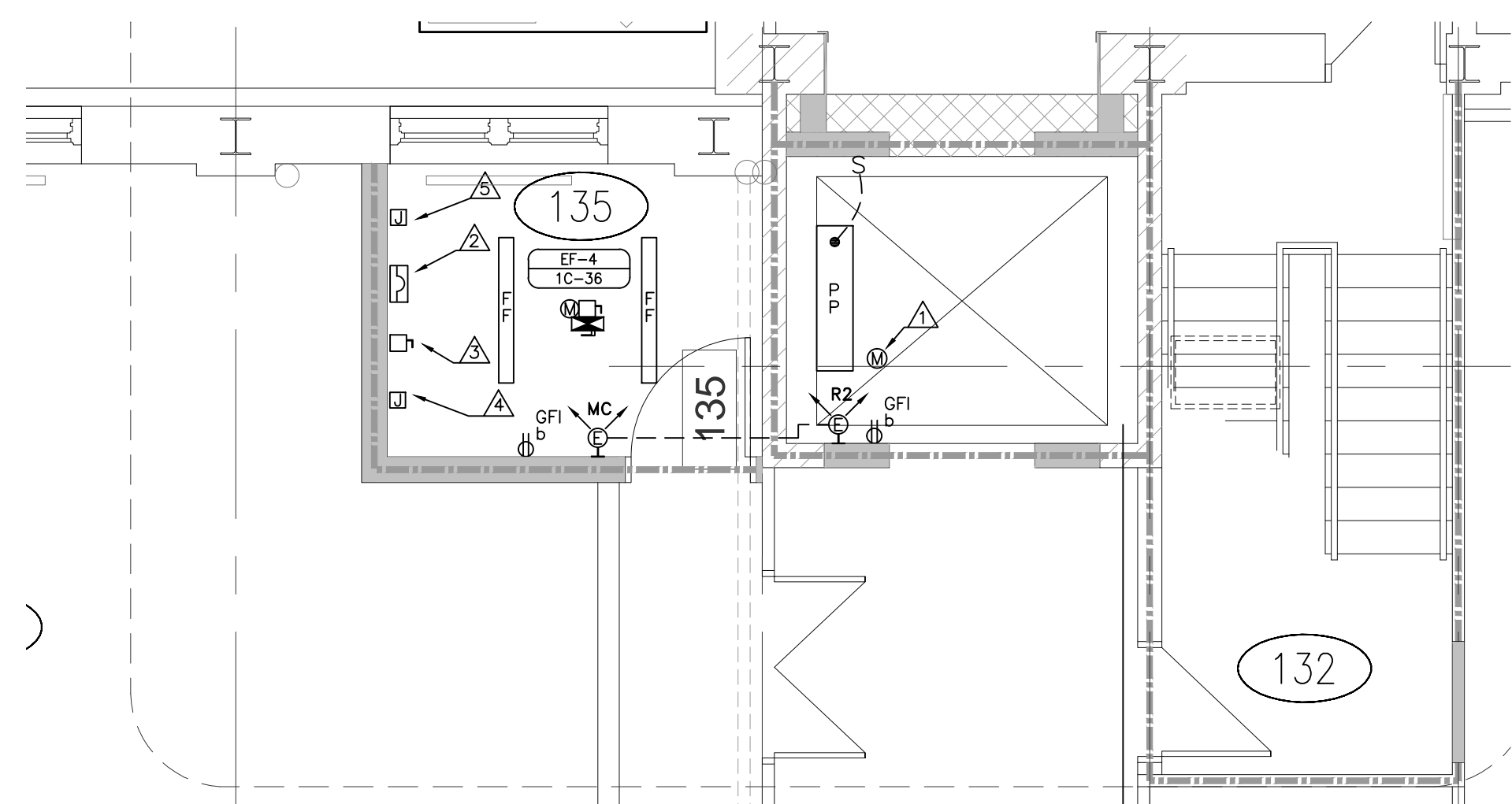




ASSOCIATION OF PROFESSIONAL ENGINEERS OF SASKATCHEWAN  
 CERTIFICATE OF AUTHORIZATION  
 RITENBURG & ASSOCIATES LTD.

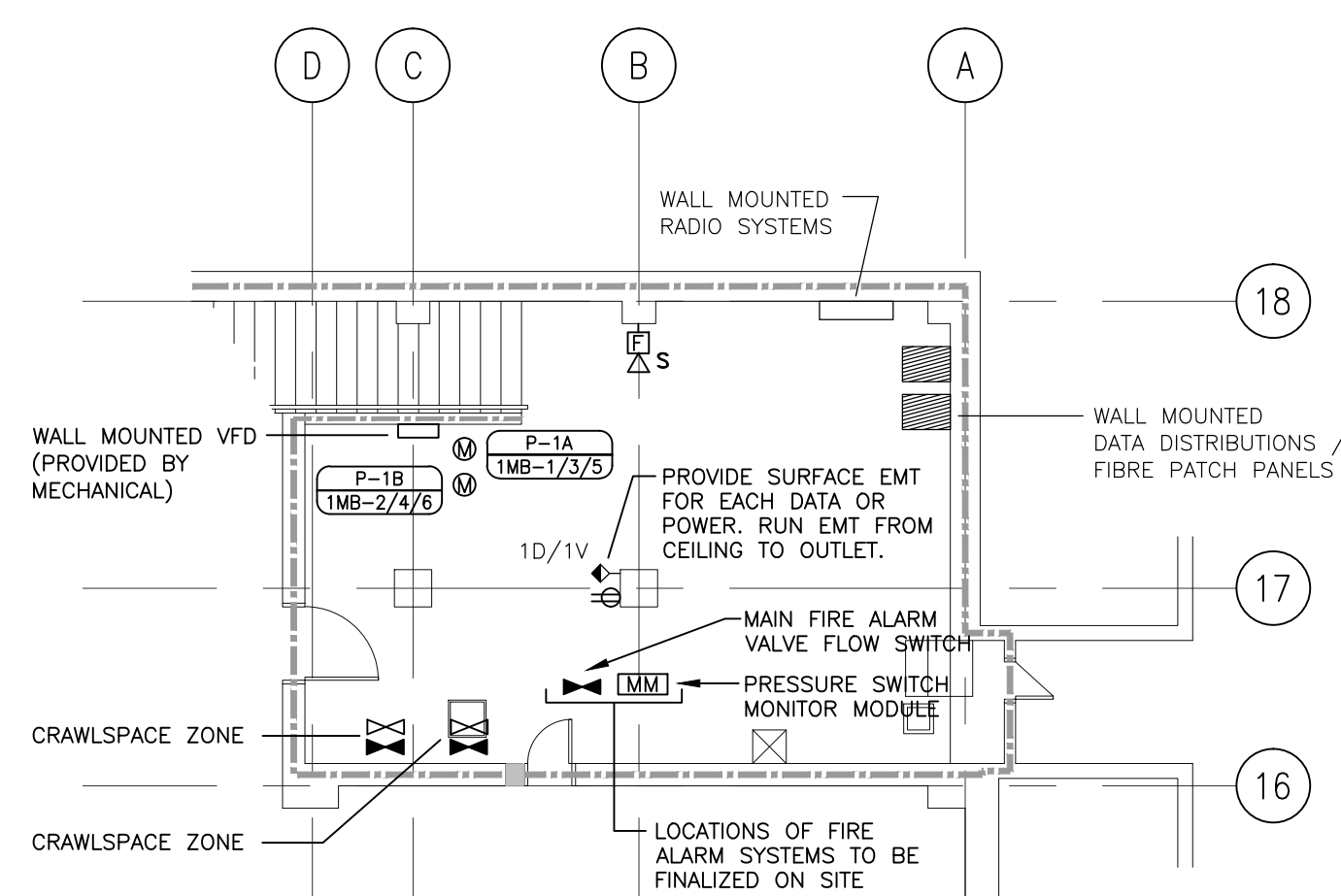
NUMBER 52  
 PERMISSION TO CONSULT HELD BY:  
 DISCIPLINE: ELECTRICAL  
 SASK. REG. NO.: 11782  
 SIGNATURE: *[Signature]*



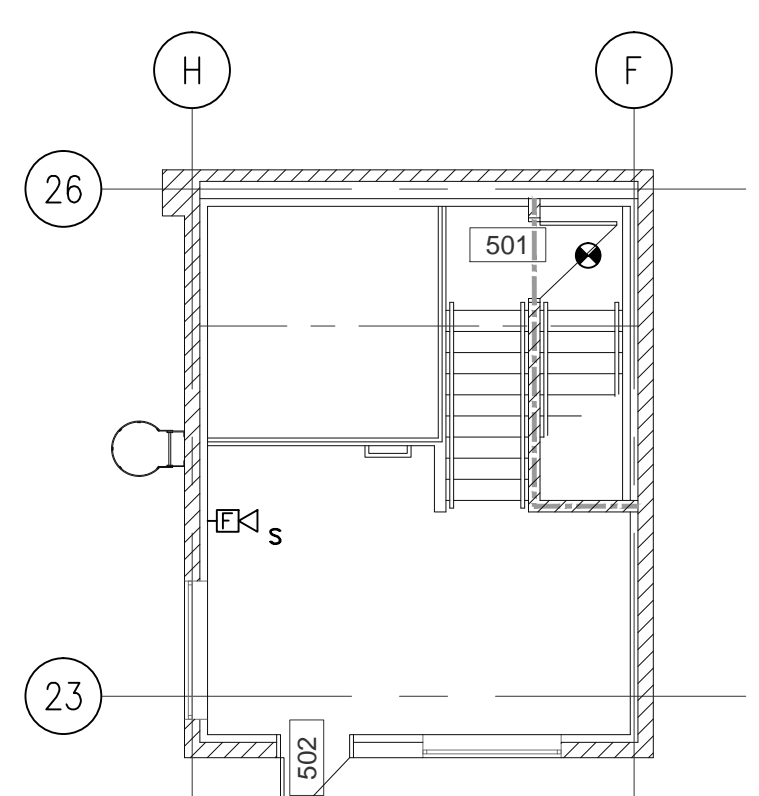
**ELEVATOR & MACHINE ROOM NOTES:**

- ⚠ ELEVATOR MOTOR CONTROLLER: 208 VOLT, 3ø, 50HP, 214FLA.
- ⚠ ELEVATOR MAIN DISCONNECT SWITCH = 400 AMP SWITCH C/W 300 AMP FUSES. MAIN DISCONNECT SWITCH SHALL BE EQUIPPED WITH AUXILIARY CONTACTS (POSITIVELY OPEN WHEN DISCONNECT SWITCH IS OPEN/OFF) FOR ELEVATOR EMERGENCY UNIT. FROM THE ELEVATOR MAIN DISCONNECT RUN (3) 4/0 + #4 INSULATED GROUND IN 63mm CONDUIT TO THE ELEVATOR MOTOR CONTROLLER FOR FINAL CONNECTION BY THE ELEVATOR CONTRACTOR.
- ⚠ RUN AN ADDITIONAL 35mm CONDUIT FROM THE ELEVATOR MAIN DISCONNECT TO THE ELEVATOR CONTROLLER FOR USE BY THE ELEVATOR CONTRACTOR.
- ⚠ ELEVATOR CAB LIGHT MAIN DISCONNECT SWITCH. PROVIDE A 15 AMP, 1 POLE BREAKER IN A CEMA 1 ENCLOSURE. PROVIDE (2) #12 RW90 AND #12 INSUL GND. IN 21mm CONDUIT TO THE ELEVATOR CONTROLLER CONNECT TO SEPARATE CIRCUIT XX-XX.
- ⚠ TELEPHONE JUNCTION BOX - PROVIDE ONE VOICE CABLE C/W TERMINATE JACK, AND RUN TO ELEVATOR CONTROLLER.
- ⚠ FIRE ALARM JUNCTION BOX - PROVIDE A FIRE ALARM CONTROL MODULE AND CONNECT INTO ELEVATOR CONTROLLER.

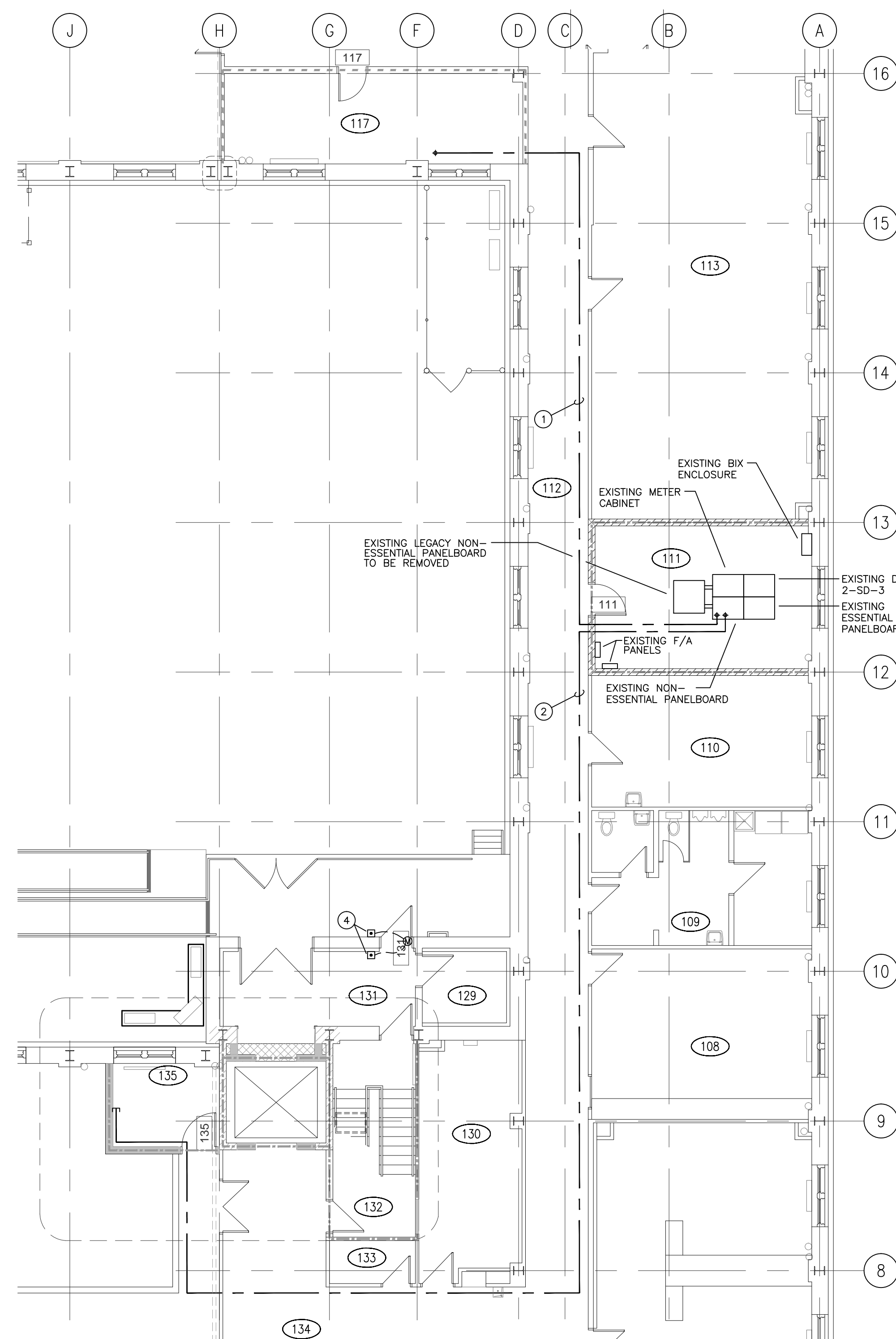
1 ELEVATOR/MACHINE ROOM LIGHTING/POWER DETAIL  
 E3.1 1:50



2 SERVICE ROOM PLAN  
 E3.1 1:100



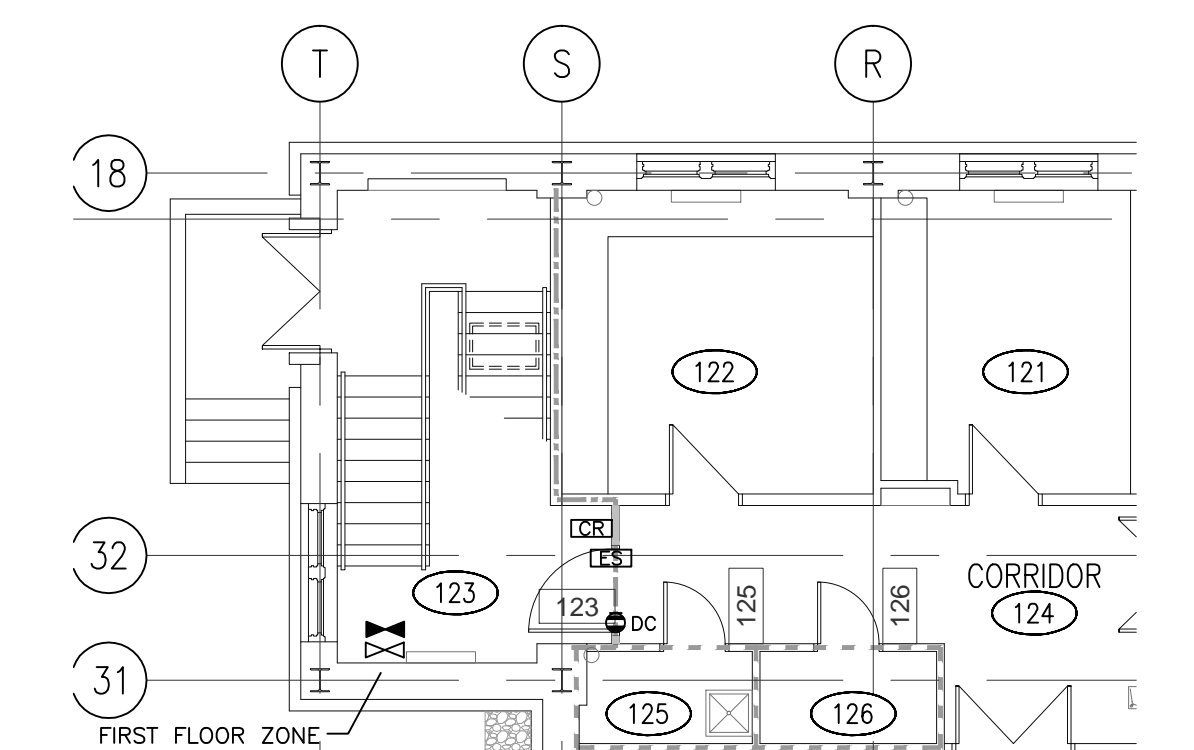
3 PENTHOUSE PLAN  
 E3.1 1:100



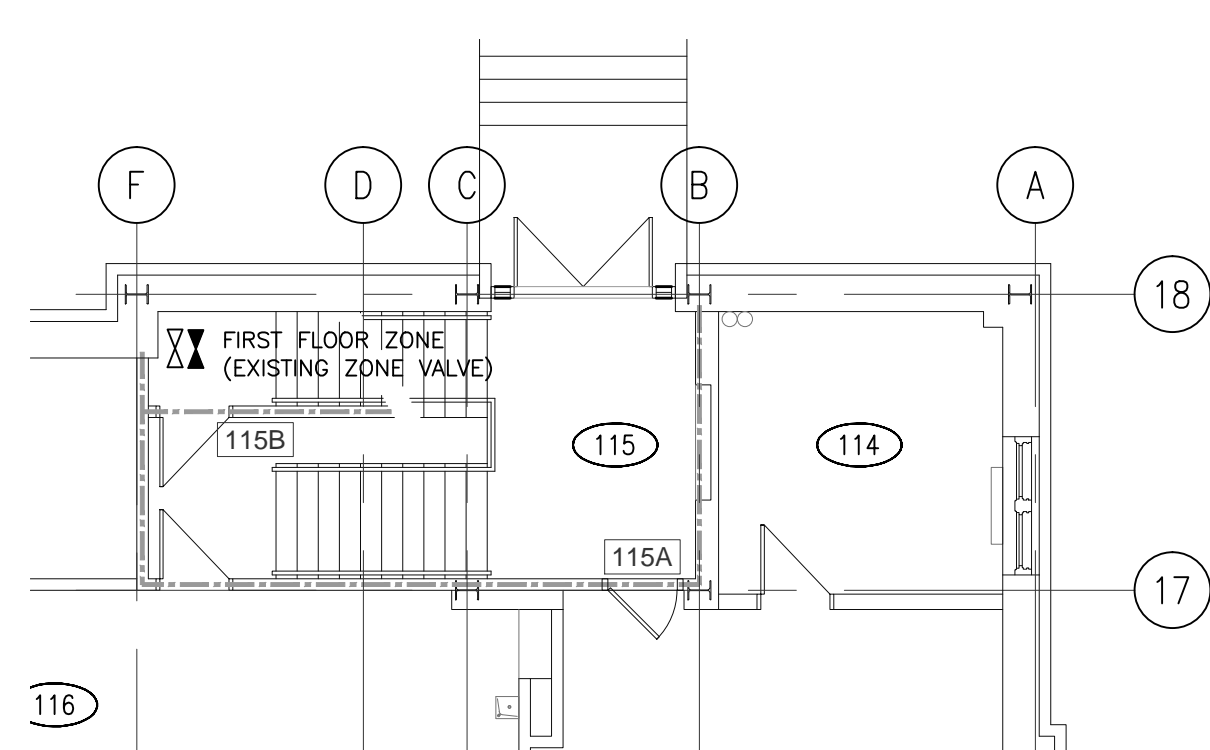
4 FIRST FLOOR PARTIAL POWER PLAN  
 E3.1 1:100

**DRAWING NOTES:**

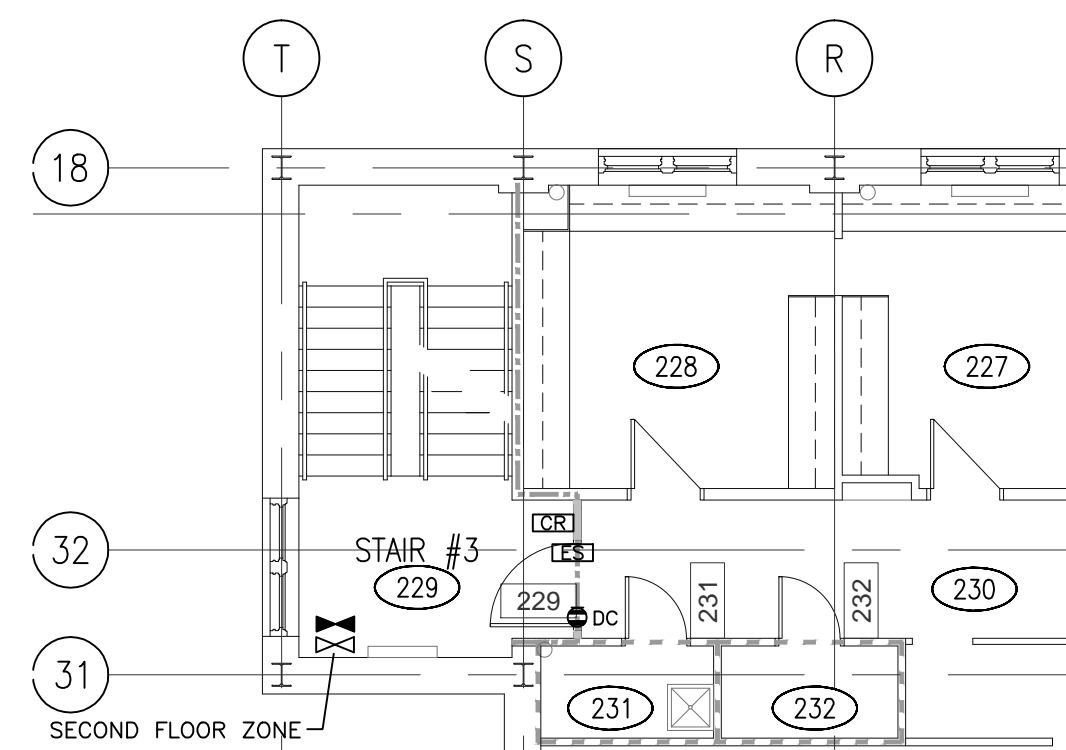
- 1 PROVIDE TWO (2) RUNS OF CONDUIT UP THROUGH THE MECHANICAL ROOMS TO THE THIRD FLOOR SUB-DISTRIBUTION CDP-3A. PROVIDE PULL BOXES AS DISTRIBUTED AND FEEDERS FROM THE MAIN DISTRIBUTION IN THE BASEMENT ELECTRICAL ROOM TO THE SUB-DISTRIBUTION IN ROOM 329. REFER TO DRAWING E4.1 FOR NUMBER OF CONDUCTORS AND SIZES.
- 2 PROVIDE (4) 4/0 + 4/0 INSULATED GND IN 63C FROM NEW BREAKER IN NON-ESSENTIAL CDP TO ELEVATOR DISCONNECT.
- 3 NEW PANEL 1F. PROVIDE CONDUIT AND FEEDER AS PER DRAWING E4.1. CONDUIT SHALL RUN PARALLEL TO CDP-3A FEEDER.
- 4 MOUNT PUSH PADS UP 900MM. CONTRACTOR SHALL PROVIDE ROUGH-IN AND WIRING FROM DOOR ACCESS CONTROL JUNCTION BOX AND DOOR MOTOR. CONFIRM REQUIREMENTS WITH MOTOR SUPPLIER.



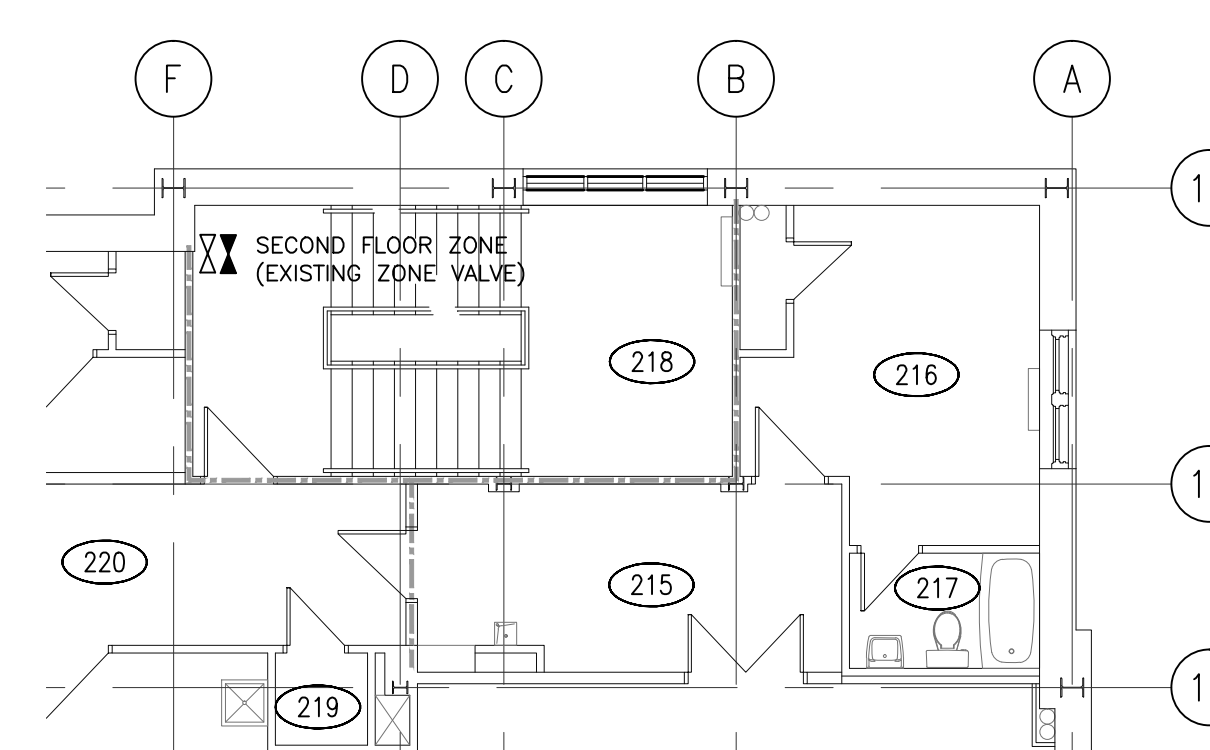
5 FIRST FLOOR ACCESS CONTROL/FIRE ALARM  
 E3.1 1:100



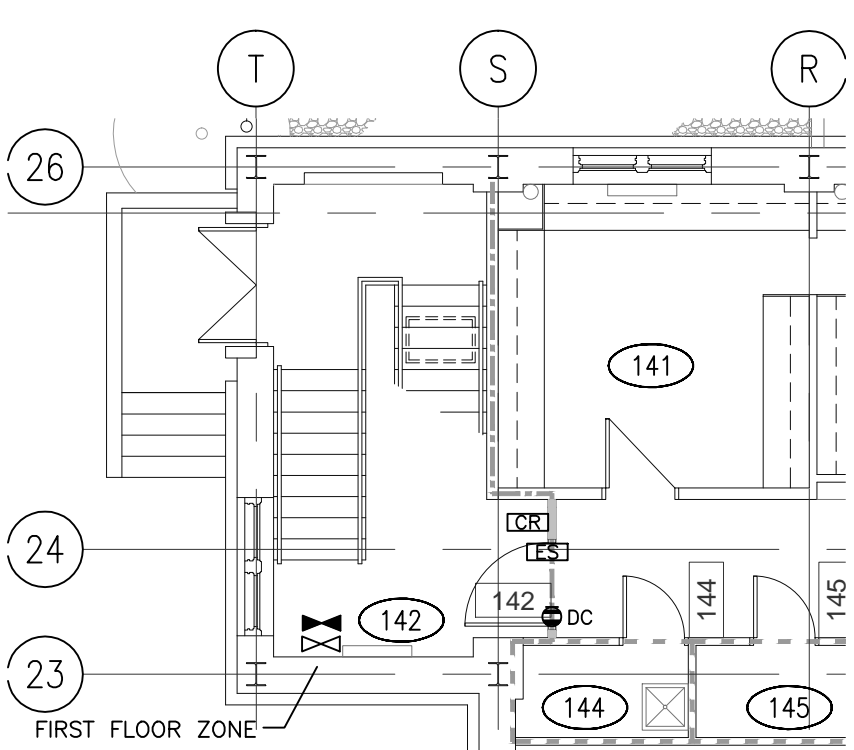
5 FIRST FLOOR FIRE ALARM  
 E3.1 1:100



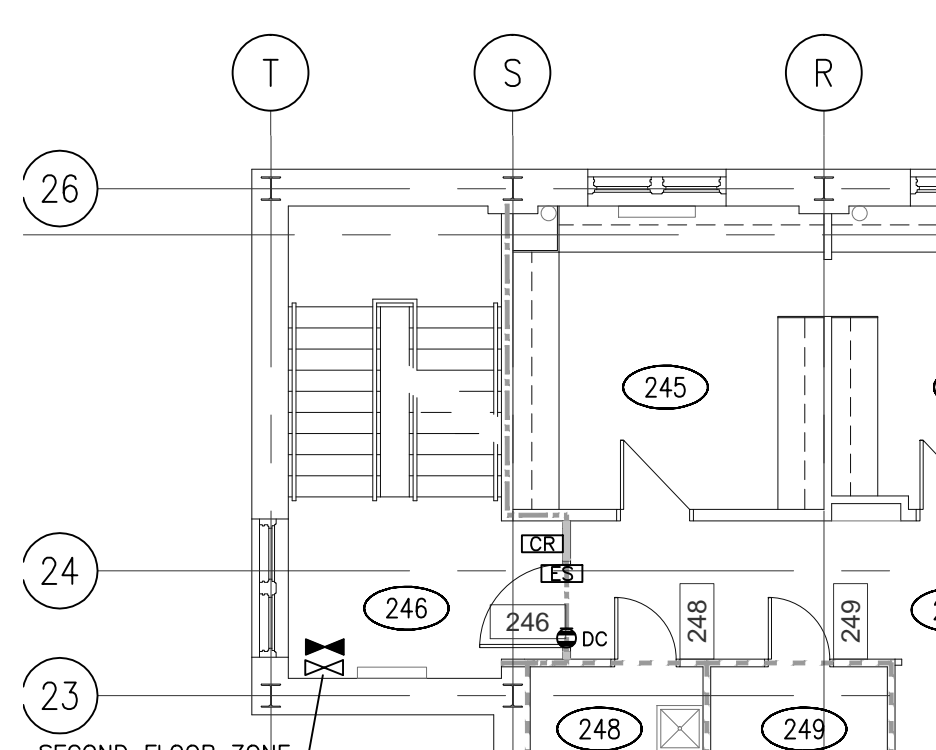
8 SECOND FLOOR ACCESS CONTROL/FIRE ALARM  
 E3.1 1:100



8 SECOND FLOOR FIRE ALARM  
 E3.1 1:100



6 FIRST FLOOR ACCESS CONTROL/FIRE ALARM  
 E3.1 1:100



9 SECOND FLOOR ACCESS CONTROL/FIRE ALARM  
 E3.1 1:100

Revision/Amendment	Description/Description	Date/Date

Project Title/Titre du projet  
**SHARED LEARNING FACILITY**  
 REGINA, SK

Approved by/Approuvé par  
 Designed by/Concept par  
**BDK,SBK,GTK**  
 Drawn by/Dessiné par  
**BDK**  
 Project Manager/Administrateur de Projets  
**AC**  
 Architectural and Engineering Resources Manager/  
 Ressources Architectural et de Directeur d'Ingénierie

Drawing Title/Titre du dessin  
**FIRST FLOOR, SECOND FLOOR,  
 BASEMENT, AND PENTHOUSE  
 POWER/SYSTEMS PLAN**

