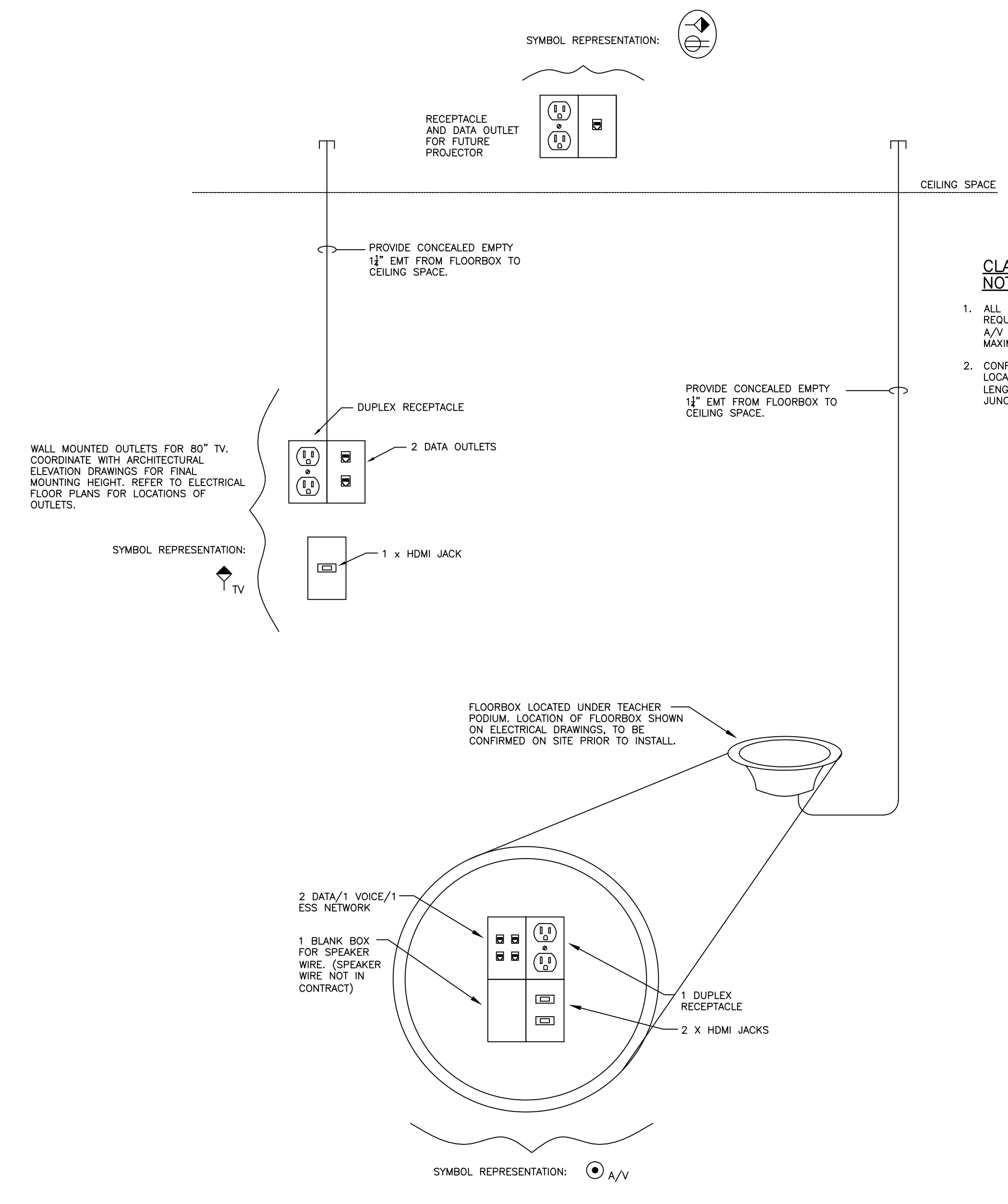
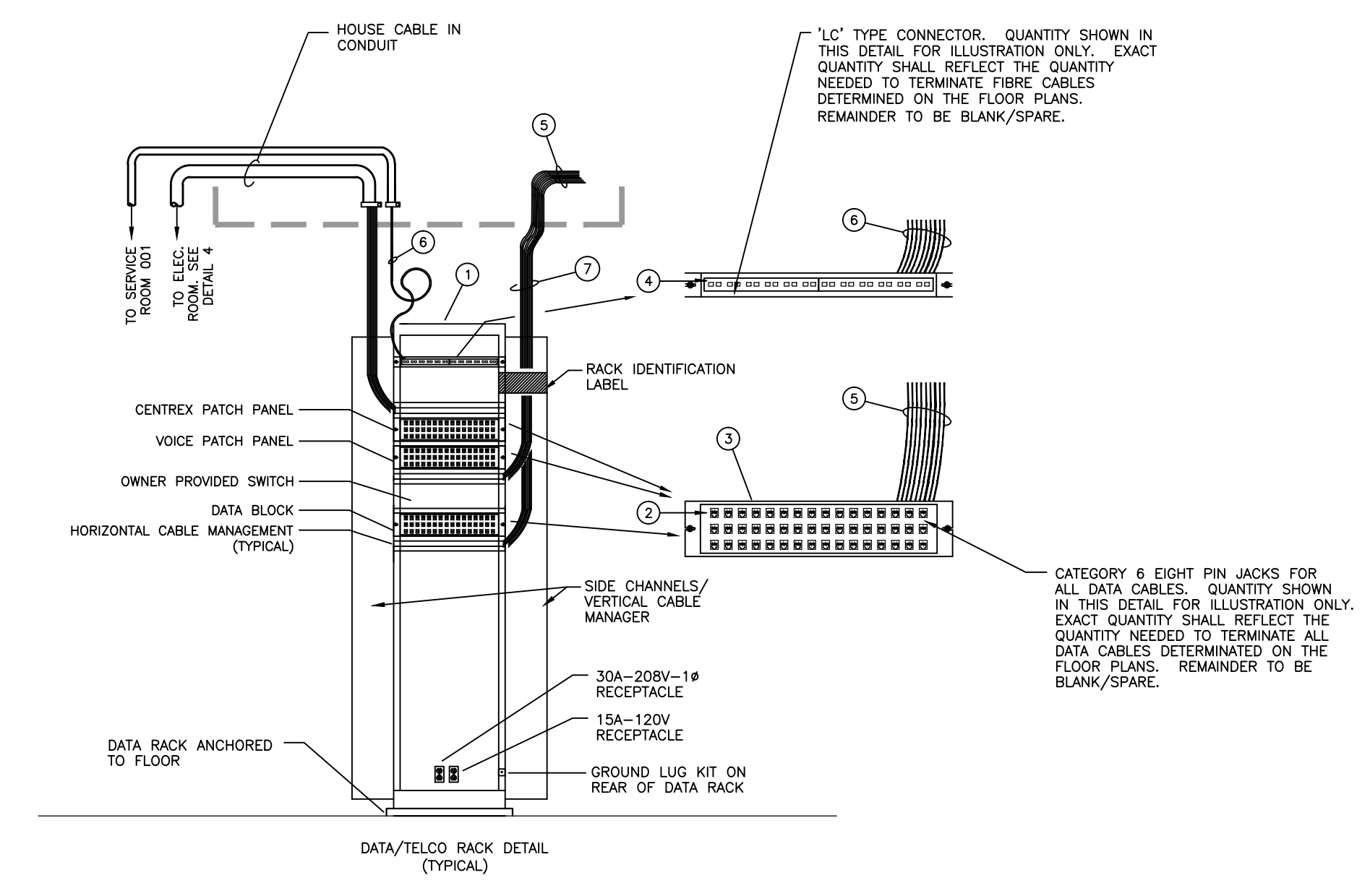


1 DATA/VOICE (IMS NETWORK) RISER AND RACK LAYOUT  
 E5.3 N.T.S.

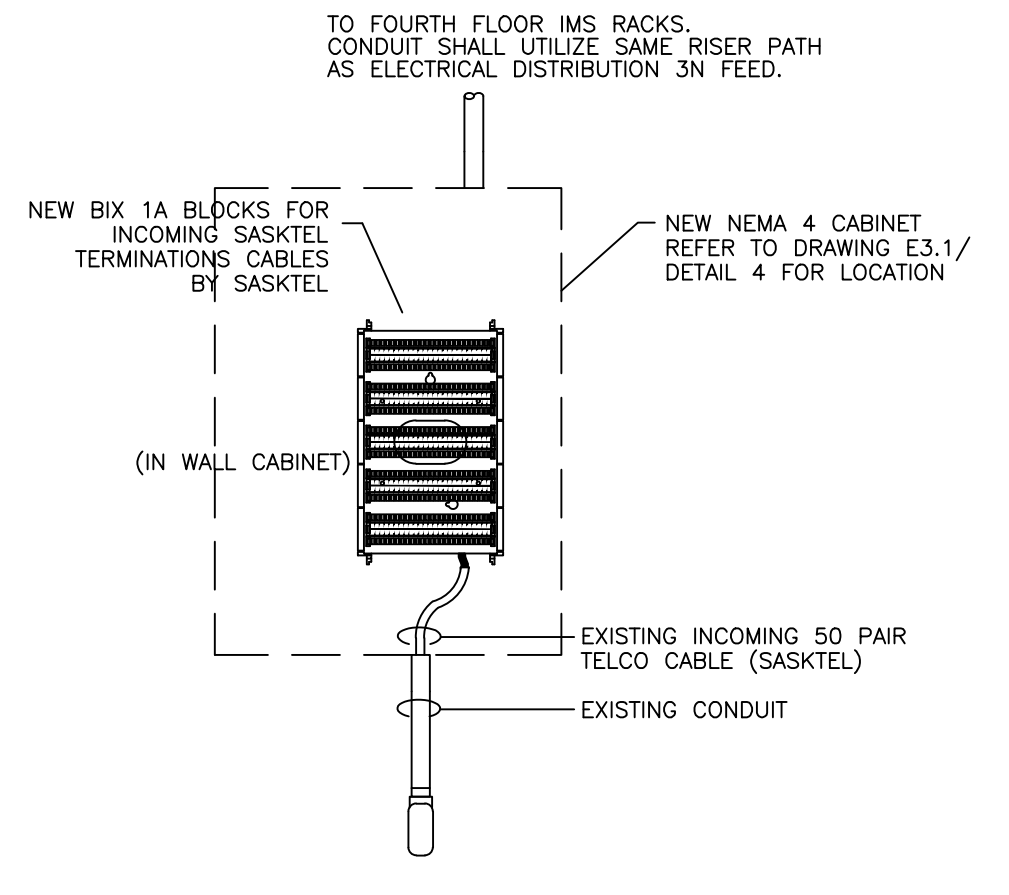


2 CLASSROOM A/V DETAIL  
 E5.3 N.T.S.



3 DATA/VOICE RACKING DETAILS  
 E5.3 N.T.S.

- DATA RACK: 2007(b) x 798(a) x 1300(d)mm C/W SIDE CHANNELS AND SUPPORT SHELF FOR OWNER'S MISCELLANEOUS EQUIPMENT. FRAME TO BE C/W ANTI-TIP PLATES ANCHORED TO FLOOR.
- 48-PORT UNCOATED DATA PATCH PANEL. PATCH PANEL SHALL EXCEPT SAME INSERTS AS WALL PLATE OUTLET JACK INSERTS. REFER TO SPECIFICATIONS. THE INITIAL DATA PATCH PANEL SHALL BE MOUNTED JUST BELOW THE FIBRE TERMINATION TRAY NEAR THE TOP OF DATA EQUIPMENT RACK AS SHOWN WITH THE REMAINDER OF THE PATCH PANELS MOUNTED BELOW.
- TYPICAL DATA CABLE SUPPORT BRACKETS MOUNTED IN REAR OF EACH DATA PATCH PANEL. CABLES SHALL BE STRAPPED TO THE SUPPORT BRACKETS TO REDUCE STRAIN ON THE INCOMING CABLES.
- FIBRE TERMINATION TRAY SHALL SUPPORT A MINIMUM 12 FIBER CABLES. MOUNT NEAR THE TOP OF THE DATA EQUIPMENT RACK AS SHOWN. THE FIBRE TERMINATION TRAY SHALL HAVE THE APPROPRIATE NUMBER OF 'L' TYPE CONNECTOR MODULES AS ILLUSTRATED.
- FIELD OUTLET CABLES TO DATA/VOICE WALL OUTLETS AND WORKSTATIONS. ALL DATA/VOICE CABLES SHALL BE CATEGORY 6.
- SUPPLY AND INSTALL ONE (1) 6 STRAND SINGLEMODE DUPLEX FIBRE PATCH CABLE WITH 'L' TYPE DUPLEX CONNECTORS IN 27mm CONDUIT FROM THE FIBRE TERMINATION TRAY IN FLOOR MOUNTED DATA RACK TO BASEMENT FIBER PATCH PANEL. THE PATCH CORD SHALL BE PROTECTED WITHIN A CABLE MANAGEMENT SYSTEM.
- RUN DATA/VOICE CABLE WITHIN A SLOTTED DUCT CABLE MANAGEMENT SYSTEM EQUIPPED WITH REMOVABLE COVER.



4 INCOMING VOICE BLOCK DETAIL  
 E5.3 N.T.S.

- INCOMING VOICE NOTES:**
- ELECTRICAL CONTRACTOR TO RE-FEED EXISTING VOICE LINES IN USE. THESE INCLUDE ONE VOICE FEED TO SECURITY SYSTEM, ONE TO BARBERSHOP, AND ONE TO STANDEASY LOUNGE, SASKTEL TO COMPLETE FINAL PUNCH-DOWN.
  - OLD SIX AND CABINET SHALL BE REMOVED, EXISTING CONDUITS TO REMAIN.



ASSOCIATION OF PROFESSIONAL ENGINEERS  
 OF SASKATCHEWAN  
 CERTIFICATE OF AUTHORIZATION  
 RITENBURG & ASSOCIATES LTD.  
 NUMBER 52  
 PERMISSION TO CONSULT HELD BY:  
 DISCIPLINE: ELECTRICAL SASK. REG. NO. 11782 SIGNATURE: [Signature]

**DO NOT SCALE DRAWINGS**

Revision/	Description/Description	Date/Date

Client/client

Project title/Titre du projet  
**SHARED LEARNING FACILITY**  
 REGINA, SK

Approved by/Approuvé par  
 Designed by/Concept par  
**BDK,SBK,GTK**  
 Drawn by/Dessiné par  
**BDK**  
 Project Manager/Administrateur de Projets  
**AC**  
 Architectural and Engineering Resources Manager/  
 Ressources Architectural et de Constructeur d'Ingénierie

Client/client  
 Drawing title/Titre du dessin  
**DATA/VOICE AND IMS NETWORK DETAILS**

