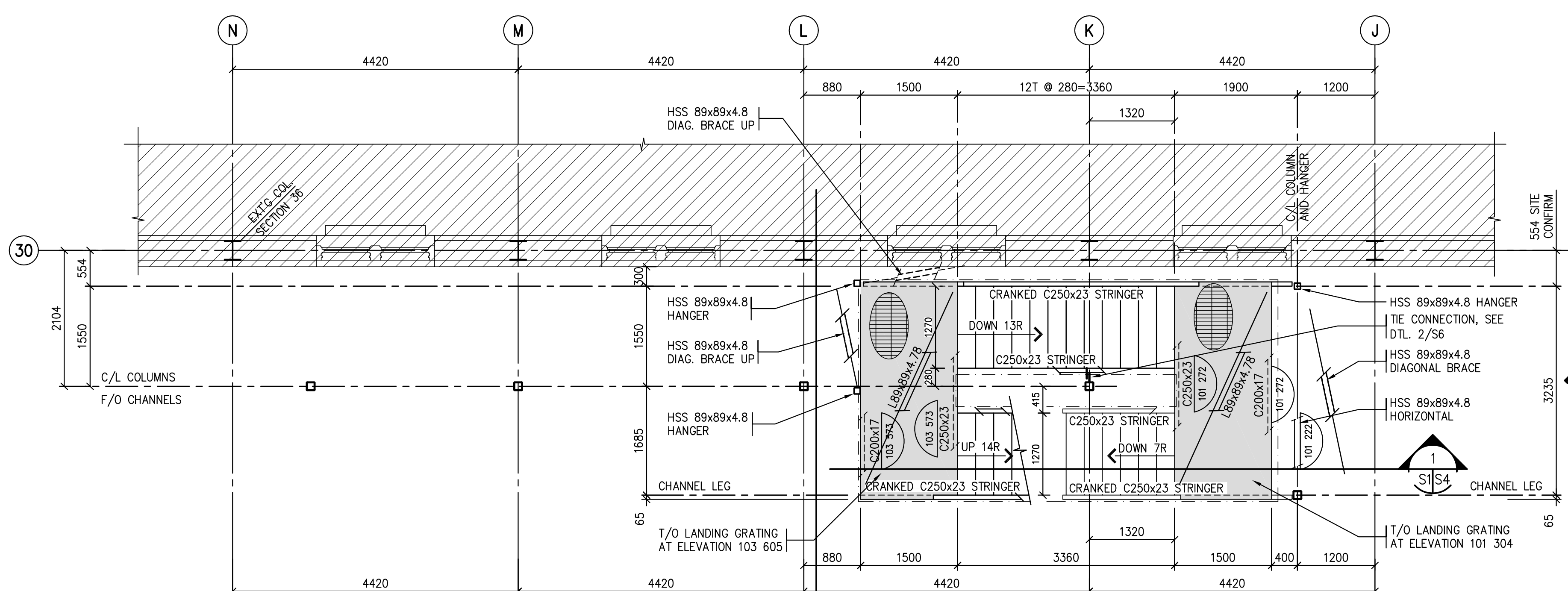
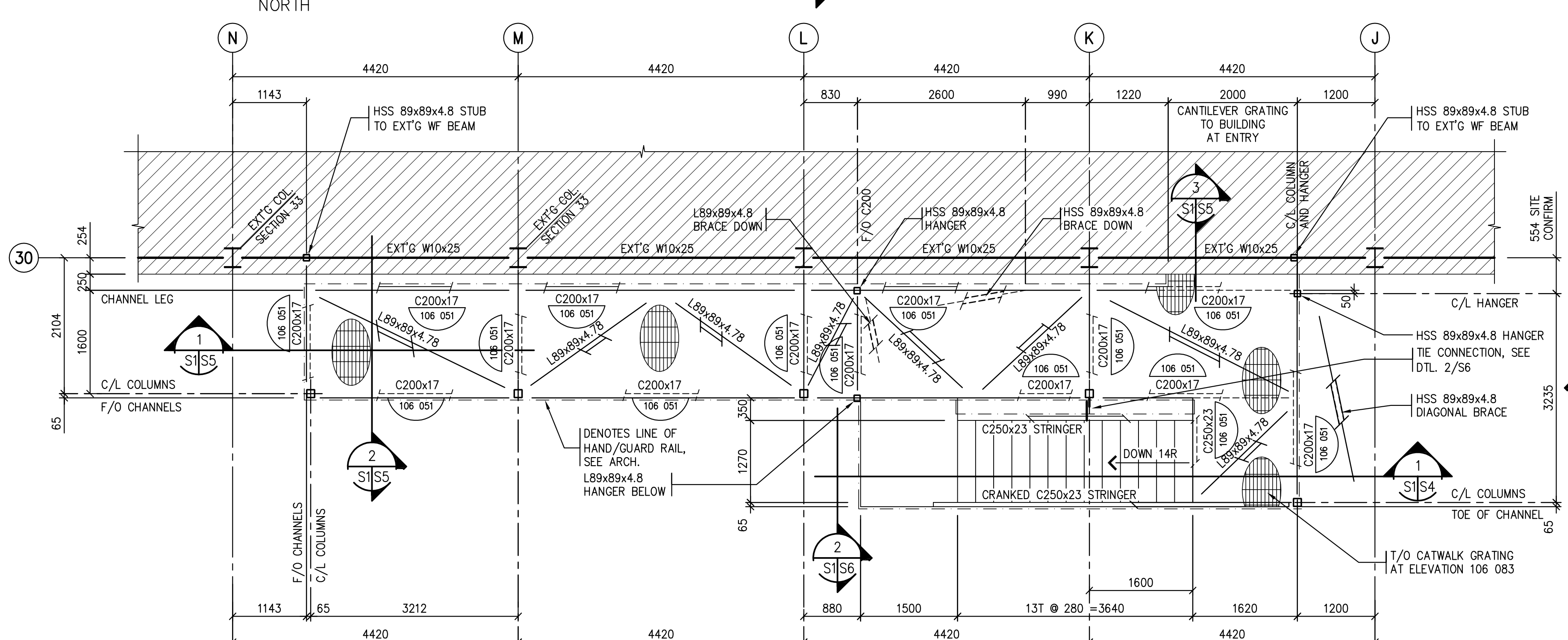


1 CATWALK FOUNDATION PLAN
1:50

NOTES:
1. PILES DENOTED ON PLAN THUS REFER TO DETAIL 2/50 FOR PILE TYPICAL FRICTION PILE DETAIL

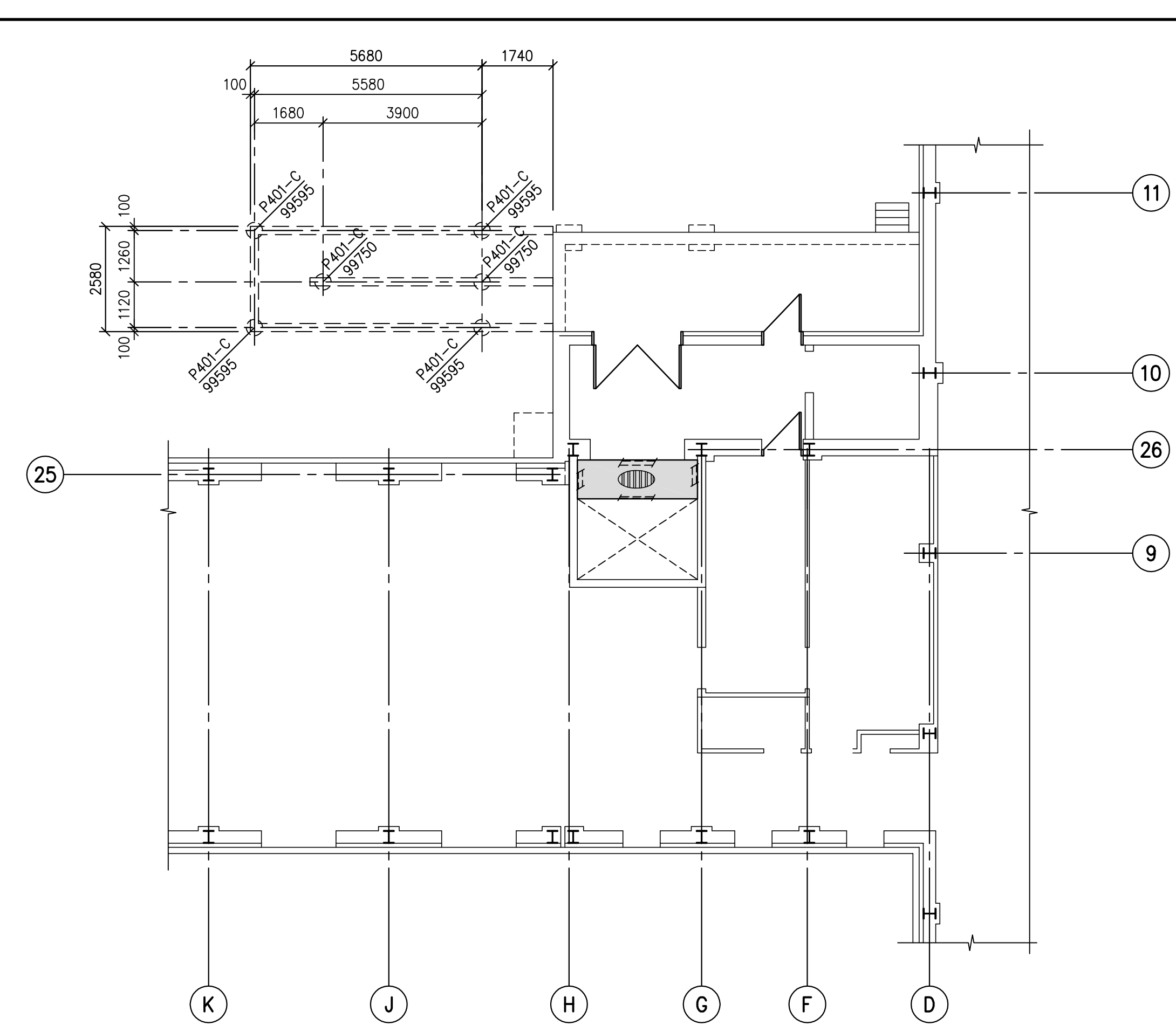
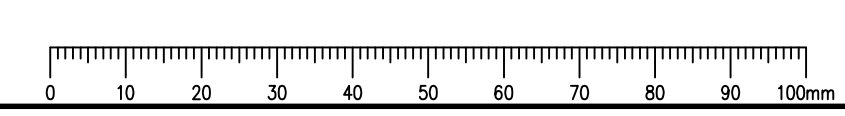


2 PLAN @ INTERMEDIATE LANDINGS
1:50



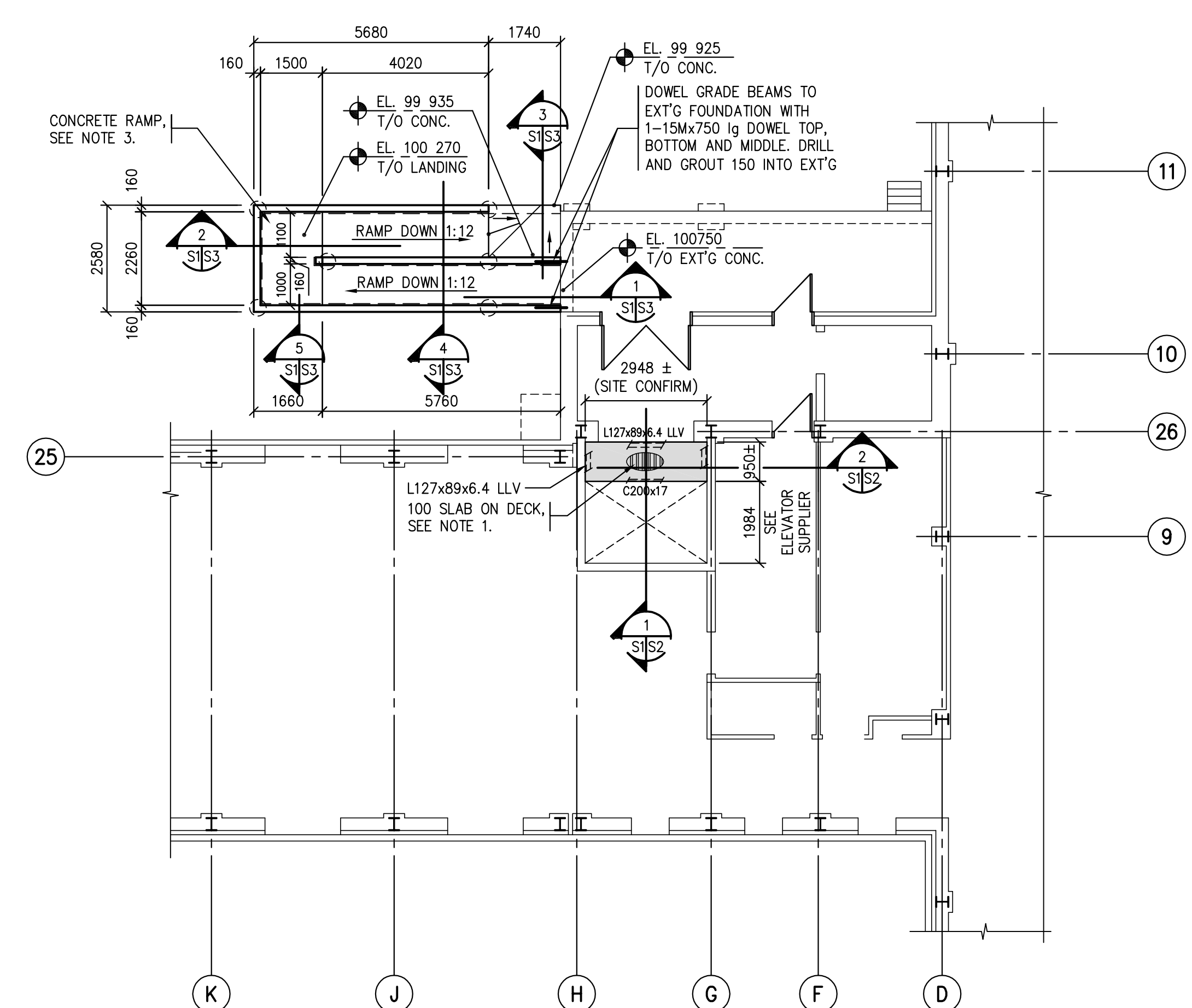
3 PLAN @ CATWALK - ELEV 106 083
1:50

NOTES:
1. CATWALK AND STAIR CONSTRUCTION TO BE: GALVANIZED METAL GRATING OVER GALVANIZED STRUCTURAL STEEL FRAMING. ALL FIELD CONNECTIONS TO BE BOLTED TYPE.
2. T/O GRATING ELEVATION AS INDICATED ON PLANS AND SECTIONS.
3. CATWALK AND STAIR DESIGN LOADS: LIVE LOAD = 4.8 KPa, DEAD LOAD = 0.75 KPa
4. COLUMNS DENOTED ON PLAN THUS SEE TYPICAL COLUMN & BASE PLATE SCHEDULE ON DRAWING 50.
5. TOP OF STEEL BEAMS AND CHANNELS ON PLANS DENOTED THUS



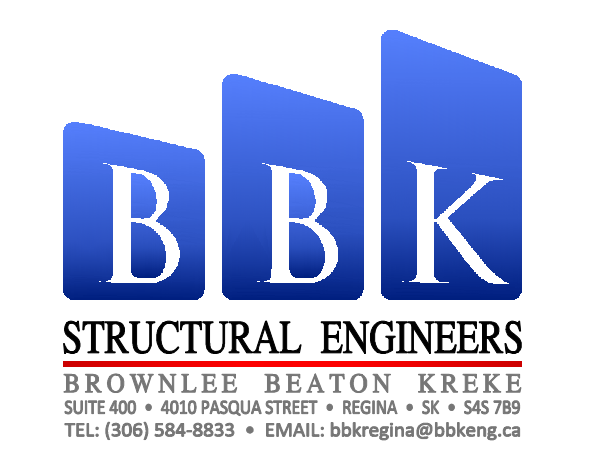
4 RAMP PILING PLAN
1:100

NOTES:
1. PILES DENOTED ON PLAN THUS REFER TO DETAIL 2/50 FOR PILE TYPICAL FRICTION PILE DETAIL



5 RAMP & ELEVATOR PLAN
1:100

NOTES:
1. ELEVATOR INFILL FLOOR CONSTRUCTION TO BE: 100 CONCRETE SLAB ON METAL DECK, REFER TO TYPICAL SLAB ON DECK DETAIL 6/50. FRAMING AS INDICATED ON PLAN AND SECTIONS. REFER TO TYPICAL DECK WELD DETAIL 7/50. T/O SLAB @ ELEVATION 100 750 (TO MATCH EXISTING FLOOR).
2. ELEVATOR INFILL FLOOR DESIGN LOADS (SHADED): LIVE LOAD = 4.8 KPa, DEAD LOAD = 2.4 KPa
3. RAMP CONSTRUCTION TO BE: 125 REINFORCED CONCRETE SLAB, 0.15 POLY VAPOUR BARRIER, 150mm VOID FORM. REFER TO SECTIONS FOR STRUCTURAL SLAB REINFORCING. REFER TO PLAN AND SECTIONS FOR ELEVATIONS.
4. RAMP FLOOR DESIGN LOADS: LIVE LOAD = 4.8 KPa, SLAB LOAD = 3.0 KPa
5. TOP OF CONCRETE RAMP LANDING AT ELEVATION 99 925 ASSUMED TO MATCH EXISTING GRADE AT LOCATION SHOWN ON DRAWINGS. FIELD CONFIRM EXACT GEODETIC ELEVATION ON SITE AND CO-ORDINATE WITH ARCHITECT.



Association of Professional Engineers & Geoscientists of Saskatchewan
CERTIFICATE OF AUTHORIZATION
BROWNLEE BEATON KREKE (REGINA) LTD.
NUMBER 525
PERMISSION TO CONSULT FIED BY: SASK REG No. SIGNATURE
DISCIPLINE: STRUCTURAL [127] SEEK

Revision/Description	Description/Description	Date/Date
0	ISSUED FOR TENDER	2014-01-17

Project Title/Titre du projet: **REGINA, SK**
SHARED LEARNING FACILITY

Approved by/Approve par: SK
Designed by/Concept par: CS / DL
Project Manager/Administrateur de Projets: AC
Architectural and Engineering Resources Manager/ Ressources Architectural et de Directeur d'ingénierie

Drawing Title/Titre du dessin: **CATWALK FOUNDATION PLAN @ INTERMEDIATE LANDINGS PLAN @ CATWALK**

RAMP PILING PLAN
RAMP & ELEVATOR PLAN

Project No./No. du projet	Sheet/Fauille	Revision no./La Révision no.
05-2013	S1	0