

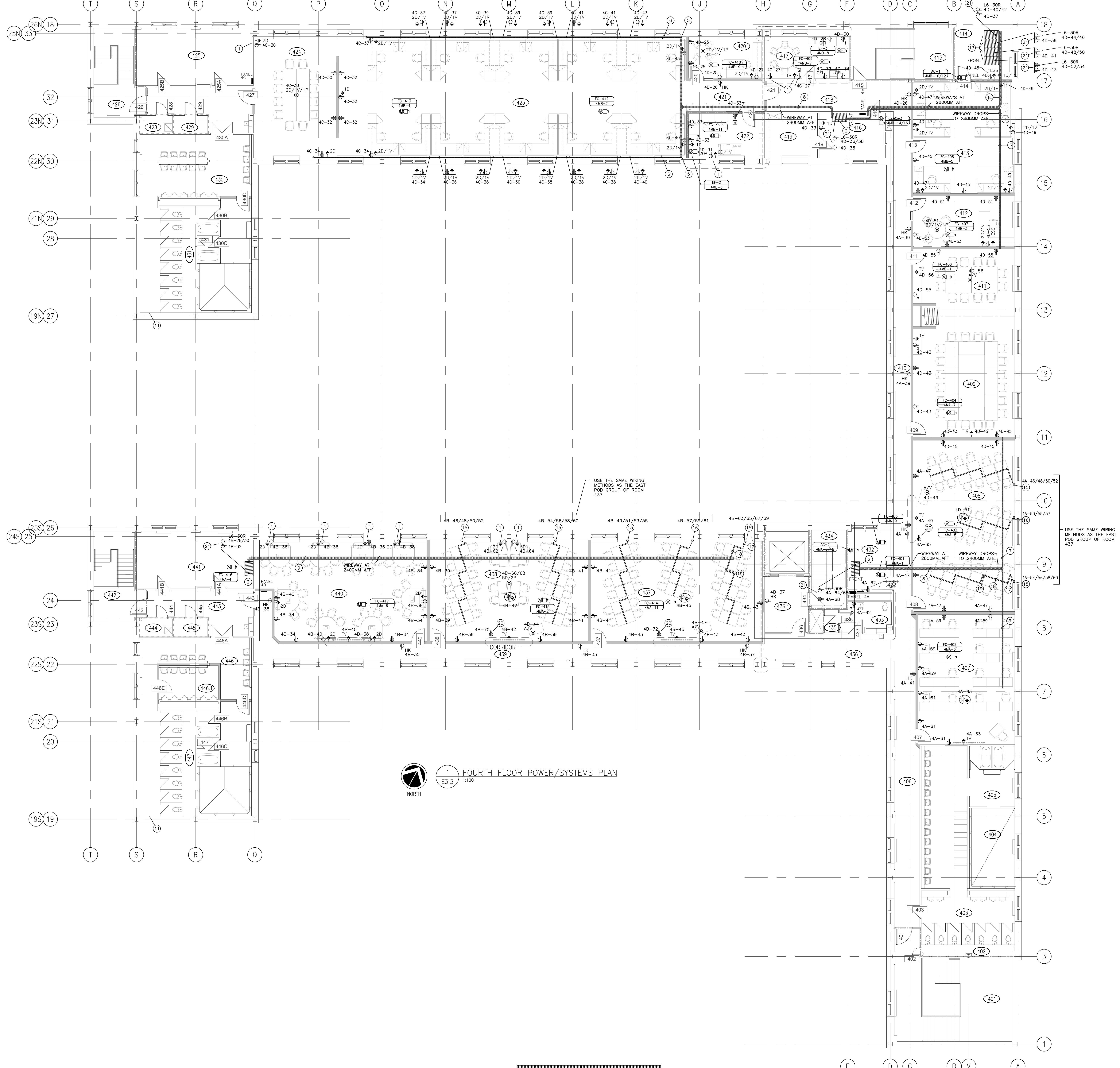
ASSOCIATION OF PROFESSIONAL ENGINEERS
 OF SASKATCHEWAN
 CERTIFICATE OF AUTHORIZATION
RITENBURG & ASSOCIATES LTD.
 NUMBER 52
 PERMISSION TO CONSULT HELD BY:
 DISCIPLINE: ELECTRICAL SIGNATURE: [Signature]
 11782

GENERAL NOTES:

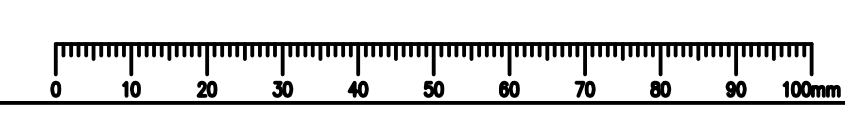
- FLOORBOYES SHOWN IN CLASSROOMS SHALL BE CORED FROM BELOW. NO SAWCUTTING WILL BE PERMITTED.
- THE CONTRACTOR SHALL RE-USE EXISTING FIRE ALARM SIGNAL DEVICES TO COMPLETE THE LAYOUT AS SHOWN AND PROVIDE ADDITIONAL NEW DEVICES AS REQUIRED.

DRAWING NOTES:

- PROVIDE VERTICAL SURFACE MOUNTED WIREMOLD RACEWAY, WIREMOLD OR APPROVED EQUAL.
- FLOOR MOUNTED IMS DATA RACK LOCATION. REFER TO DRAWING E3.3 FOR FURTHER DETAILS. PROVIDE CIRCUITS AS NEEDED FOR RACK MOUNTED RECEPTACLES.
- NOT USED
- NOT USED
- PROVIDE VERTICAL SURFACE MOUNT WIREMOLD RACEWAY FROM BASKET TRAY DOWN TO HORIZONTAL WIREMOLD RACEWAY DATA CABLE CHANNEL. WIREMOLD RACEWAY SHALL BE SIZED ACCORDING TO MAXIMUM 40% FILL.
- PROVIDE HORIZONTAL WIREMOLD RACEWAY STARTING AT DROP-DOWN FROM BASKET TRAY. RUN ALONG WALL UNTIL LAST OUTLET SHOWN. WIREMOLD SHALL BE BELOW DESK HEIGHT, BELOW WINDOWS, AND ABOVE MECHANICAL HEATING UNITS. COORDINATE WITH ARCHITECTURAL ELEVATION DRAWINGS. WIREMOLD RACEWAY SHALL BE SIZED ACCORDING TO MAXIMUM 40% FILL. WIREMOLD SHALL BE 100MM DUAL CHANNEL, ONE FOR DATA & ONE FOR POWER.
- PROVIDE 51MM X 102MM (H X W) BASKET TRAY. MOUNT TRAY AT HEIGHT NOTED ON DRAWINGS.
- PROVIDE 51MM X 152MM (H X W) BASKET TRAY. MOUNT TRAY AT HEIGHT NOTED ON DRAWINGS.
- PROVIDE 51MM X 203MM (H X W) WIREWAY. WIREWAY SHALL BE LAY IN STEEL CONSTRUCTION, WHITE POWDER COAT PAINTED, 10 FOOT SECTIONS, COMPLETE WITH HINGED COVER. ELECTRICAL CONTRACTOR SHALL ENSURE NO HINGED COVER IS PRESENT DIRECTLY UNDERNEATH ANY OBSTRUCTIONS.
- PROVIDE VERTICAL SURFACE MOUNT WIREMOLD RACEWAY FROM CEILING DOWN TO HORIZONTAL WIREMOLD RACEWAY POWER CABLE CHANNEL. WIREMOLD RACEWAY SHALL BE SIZED ACCORDING TO MAXIMUM 40% FILL.
- NOT USED
- NOT USED
- FLOOR MOUNTED ESS DATA RACK LOCATION. REFER TO DRAWING E3 FOR FURTHER DETAILS. PROVIDE CIRCUIT FOR POWER BAR STRIP.
- PROVIDE 5 DATA DROPS AND 2 POWER CIRCUITS FOR CLASSROOM POD.
- PROVIDE 15 DATA DROPS AND 4 POWER CIRCUITS FOR ROW OF CLASSROOM PODS. ALL CABLING SHALL BE CONCEALED IN VERTICAL SURFACE MOUNT WIREMOLD RACEWAY WIREMOLD OR APPROVED EQUAL. CABLING SHALL EXTEND TO OVER FLOOR RACEWAY. CONTRACTOR SHALL PROVIDE TWO (2) DUPLEX RECEPTACLES AND FIVE (5) DATA OUTLETS PER POD, TO BE MOUNTED IN OWNER PROVIDED TABLE BOX.
- PROVIDE 10 DATA DROPS AND 3 POWER CIRCUITS FOR ROW OF CLASSROOM PODS. ALL CABLING SHALL BE CONCEALED IN VERTICAL SURFACE MOUNT WIREMOLD RACEWAY WIREMOLD OR APPROVED EQUAL. CABLING SHALL EXTEND TO OVER FLOOR RACEWAY. CONTRACTOR SHALL PROVIDE TWO (2) DUPLEX RECEPTACLES AND FIVE (5) DATA OUTLETS PER POD, TO BE MOUNTED IN OWNER PROVIDED TABLE BOX.
- PROVIDE OVER FLOOR CABLE MANAGEMENT RACEWAY TO CONCEAL POWER AND COMMUNICATIONS CABLING FROM BOTTOM OF VERTICAL RACEWAY. OVER FLOOR RACEWAY SHALL EXTEND TO TRANSITION CHANNEL. OVER FLOOR RACEWAY SHALL BE WIREMOLD INTEGRATED OVER FLOOR RACEWAY OR APPROVED EQUAL, BLACK IN COLOUR.
- PROVIDE POWER AND COMMUNICATIONS TRANSITION CHANNEL FROM OVER FLOOR RACEWAY TO UNDER TABLE MANAGEMENT. PROVIDE UNDER TABLE MANAGEMENT FROM TRANSITION CHANNEL ALONG UNDERSIDE OF POD TO FLEXIBLE CONNECTION AT OPPOSITE SIDE OF POD FOR POWER AND COMMUNICATIONS CABLING. TRANSITION CHANNEL AND UNDER TABLE RACEWAY SHALL BE WIREMOLD INTEGRATED SERIES OR APPROVED EQUAL, BLACK IN COLOUR.
- PROVIDE BLACK FLEX CABLE BETWEEN DESK CABLE MANAGEMENT SYSTEMS.
- PROVIDE RECEPTACLE MOUNTED IN CEILING SPACE FOR FUTURE MOTORIZED SCREEN.
- RACK MOUNTED RECEPTACLES, SEE DRAWING E3.1 FOR ESS RACK DETAILS, AND DRAWING E3.3 FOR IMS RACK DETAILS.



1 FOURTH FLOOR POWER/SYSTEMS PLAN
 E3.3 1:100



Revision/Revisieel	Description/Description	Date/Date
Client/client		

Project title/Titre du projet
SHARED LEARNING FACILITY
 REGINA, SK

Approved by/Approve par
 Designed by/Concept par
BDK,SBK,GTK
 Drawn by/Dessine par
BDK
 Project Manager/Administrateur de Projets
AC
 Architectural and Engineering Resources Manager/
 Ressources Architecturales et de Directeur d'Ingénierie

Drawing title/Titre du dessin
FOURTH FLOOR
POWER/SYSTEM PLAN

Project No./No. du projet	Sheet/Feuille	Revision no./La Révision
05/2013	E3.3	