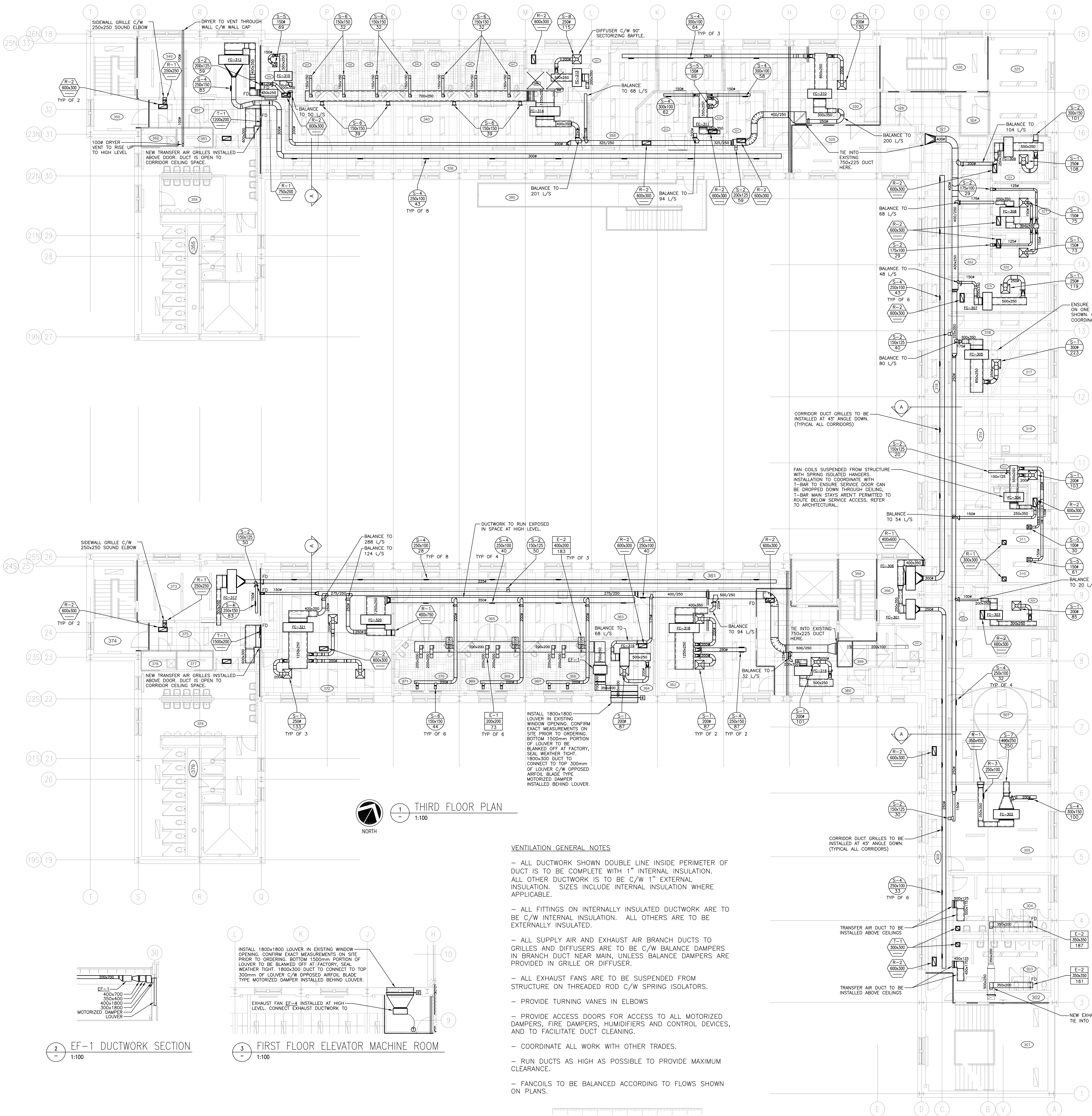




Association of Professional Engineers & Geoscientists of Saskatchewan
CERTIFICATE OF AUTHORIZATION
HDA ENGINEERING LTD.
Number: C381
Permission to Consult Held by: S. Dawson
Signature: S. Dawson
Mach: 6093



1 THIRD FLOOR PLAN
1:100

VENTILATION GENERAL NOTES

- ALL DUCTWORK SHOWN DOUBLE LINE INSIDE PERIMETER OF DUCT IS TO BE COMPLETE WITH 1" INTERNAL INSULATION. ALL OTHER DUCTWORK IS TO BE C/W 1" EXTERNAL INSULATION. SIZES INCLUDE INTERNAL INSULATION WHERE APPLICABLE.
- ALL FITTINGS ON INTERNALLY INSULATED DUCTWORK ARE TO BE C/W INTERNAL INSULATION. ALL OTHERS ARE TO BE EXTERNALLY INSULATED.
- ALL SUPPLY AIR AND EXHAUST AIR BRANCH DUCTS TO GRILLES AND DIFFUSERS ARE TO BE C/W BALANCE DAMPERS IN BRANCH DUCT NEAR MAIN, UNLESS BALANCE DAMPERS ARE PROVIDED IN GRILLE OR DIFFUSER.
- ALL EXHAUST FANS ARE TO BE SUSPENDED FROM STRUCTURE ON THREADED ROD C/W SPRING ISOLATORS.
- PROVIDE TURNING VANES IN ELBOWS
- PROVIDE ACCESS DOORS FOR ACCESS TO ALL MOTORIZED DAMPERS, FIRE DAMPERS, HUMIDIFIERS AND CONTROL DEVICES, AND TO FACILITATE DUCT CLEANING.
- COORDINATE ALL WORK WITH OTHER TRADES.
- RUN DUCTS AS HIGH AS POSSIBLE TO PROVIDE MAXIMUM CLEARANCE.
- FANCOILS TO BE BALANCED ACCORDING TO FLOWS SHOWN ON PLANS.

2 EF-1 DUCTWORK SECTION
1:100

3 FIRST FLOOR ELEVATOR MACHINE ROOM
1:100

DO NOT SCALE DRAWINGS

Revision/Description	Date/Date
0 ISSUED FOR TENDER	2014-01-17

Project Title/Titre du projet
SHARED LEARNING FACILITY
REGINA, SK

Approved by/Approve par
TKC
Designed by/Concept par
TKC
Drawn by/Dessine par
TKC/JJB
Project Manager/Administrateur de Projets
AC
Architectural and Engineering Resources Manager/
Resources Architectural et de Directeur d'Ingénierie

Drawing Title/Titre du dessin
THIRD FLOOR PLAN
VENTILATION REVISIONS