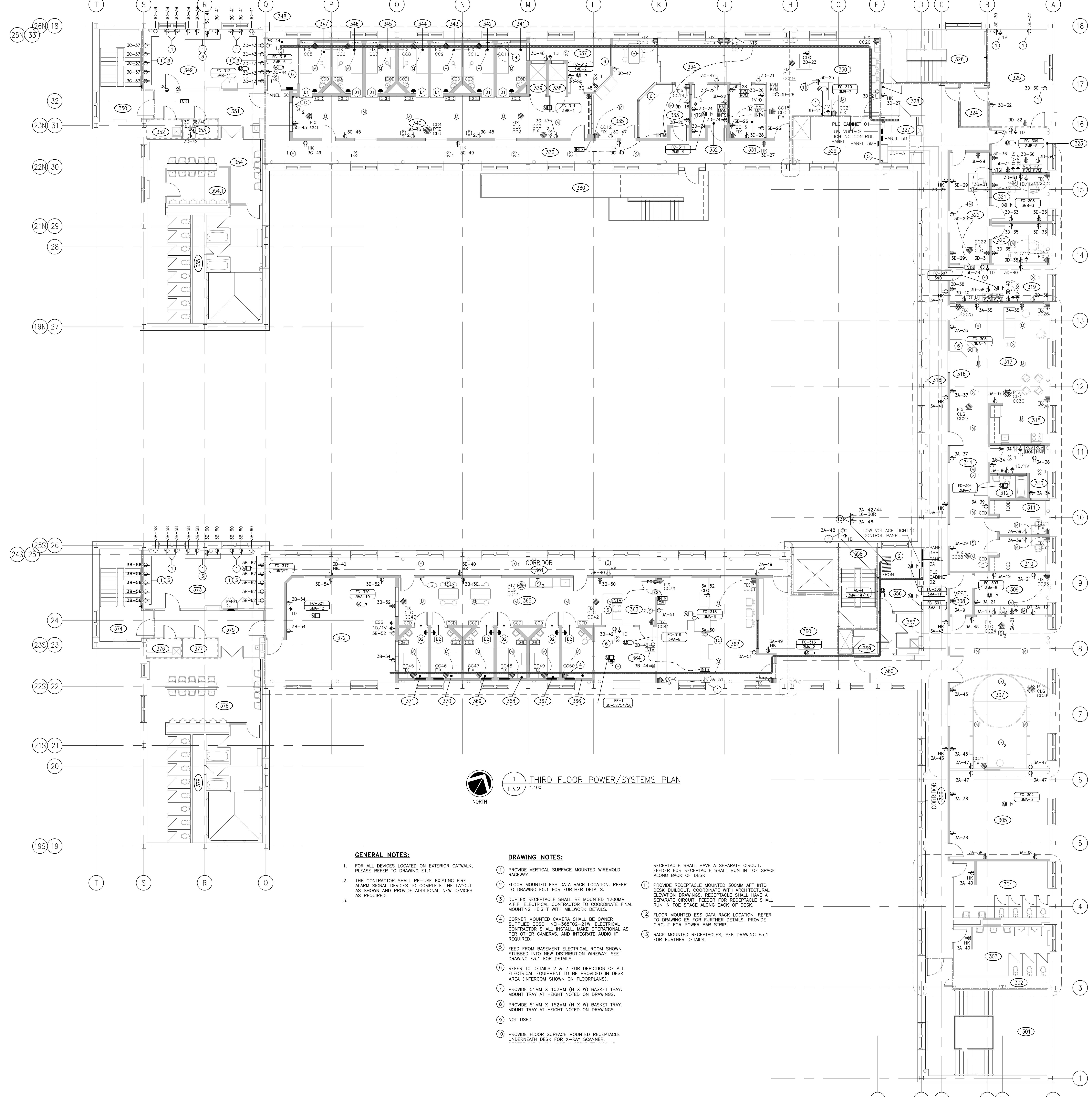


ASSOCIATION OF PROFESSIONAL ENGINEERS
 OF SASKATCHEWAN
 CERTIFICATE OF AUTHORIZATION
RITENBURG & ASSOCIATES LTD.
 NUMBER 52
 PERMISSION TO CONSULT HELD BY:
 DISCIPLINE: ELECTRICAL
 SASK. REG. NO.: 11782
 SIGNATURE: *[Signature]*



1 THIRD FLOOR POWER/SYSTEMS PLAN
 E3.2 1:100

GENERAL NOTES:

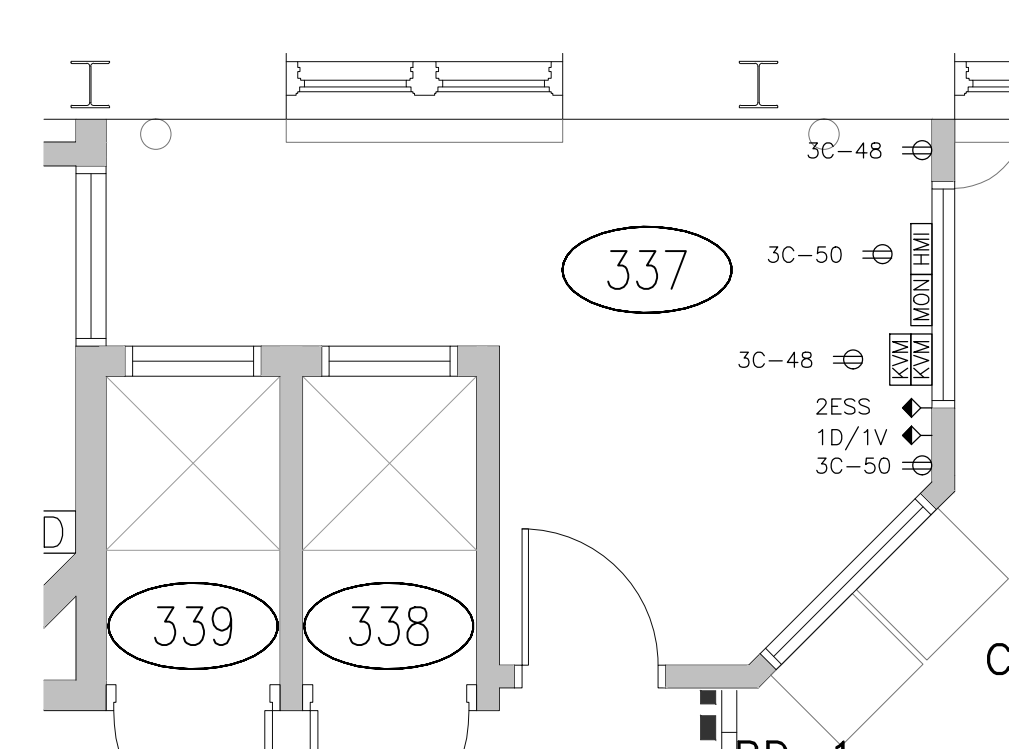
- FOR ALL DEVICES LOCATED ON EXTERIOR CATWALK, PLEASE REFER TO DRAWING E3.1.
- THE CONTRACTOR SHALL RE-USE EXISTING FIRE ALARM SIGNAL DEVICES TO COMPLETE THE LAYOUT AS SHOWN AND PROVIDE ADDITIONAL NEW DEVICES AS REQUIRED.
- NOT USED

DRAWING NOTES:

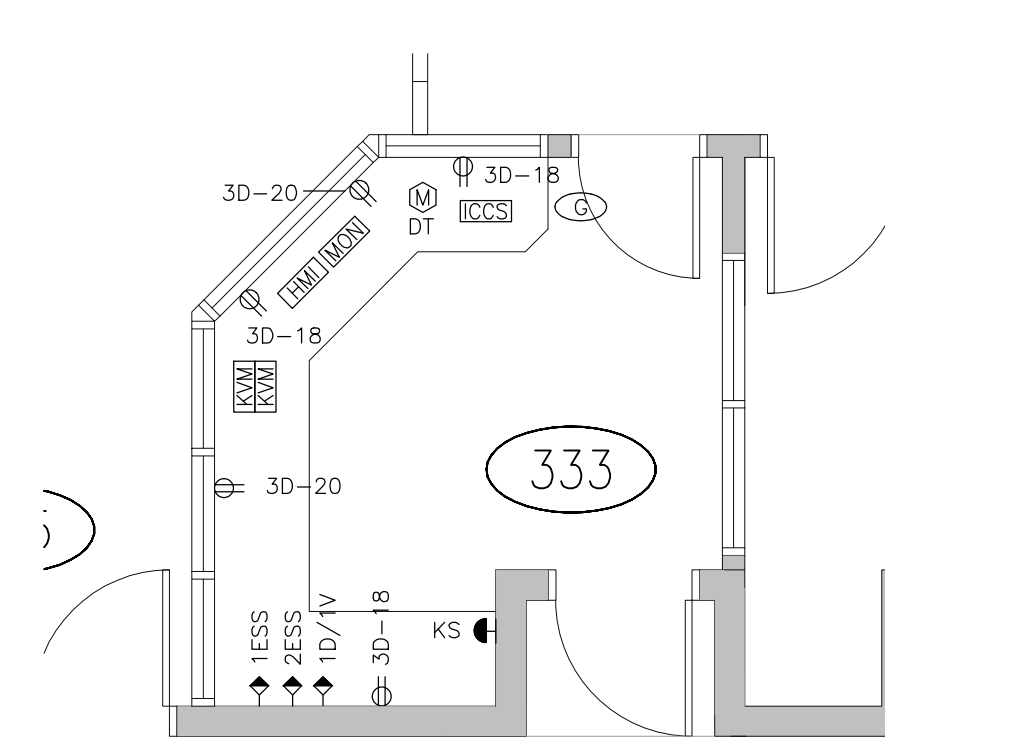
- PROVIDE VERTICAL SURFACE MOUNTED WIREMOLD RACEWAY.
- FLOOR MOUNTED ESS DATA RACK LOCATION. REFER TO DRAWING E3.1 FOR FURTHER DETAILS.
- DUPLEX RECEPTACLE SHALL BE MOUNTED 1200MM A.F.F. ELECTRICAL CONTRACTOR TO COORDINATE FINAL MOUNTING HEIGHT WITH MILLWORK DETAILS.
- CORNER MOUNTED CAMERA SHALL BE OWNER SUPPLIED BOSCH NEI-368F02-21W. ELECTRICAL CONTRACTOR SHALL INSTALL, MAKE OPERATIONAL AS PER OTHER CAMERAS, AND INTEGRATE AUDIO IF REQUIRED.
- FEED FROM BASEMENT ELECTRICAL ROOM SHOWN STUBBED INTO NEW DISTRIBUTION WIREWAY. SEE DRAWING E3.1 FOR DETAILS.
- REFER TO DETAILS 2 & 3 FOR DEPICTION OF ALL ELECTRICAL EQUIPMENT TO BE PROVIDED IN DESK AREA (INTERCOM SHOWN ON FLOORPLANS).
- PROVIDE 51MM X 102MM (H X W) BASKET TRAY. MOUNT TRAY AT HEIGHT NOTED ON DRAWINGS.
- PROVIDE 51MM X 152MM (H X W) BASKET TRAY. MOUNT TRAY AT HEIGHT NOTED ON DRAWINGS.
- NOT USED
- PROVIDE FLOOR SURFACE MOUNTED RECEPTACLE UNDERNEATH DESK FOR X-RAY SCANNER.

- RECEPTACLE SHALL HAVE A SEPARATE CIRCUIT. FEEDER FOR RECEPTACLE SHALL RUN IN TOE SPACE ALONG BACK OF DESK.
- PROVIDE RECEPTACLE MOUNTED 300MM AFF INTO DESK BUILDOUT, COORDINATE WITH ARCHITECTURAL ELEVATION DRAWINGS. RECEPTACLE SHALL HAVE A SEPARATE CIRCUIT. FEEDER FOR RECEPTACLE SHALL RUN IN TOE SPACE ALONG BACK OF DESK.
- FLOOR MOUNTED ESS DATA RACK LOCATION. REFER TO DRAWING E3 FOR FURTHER DETAILS. PROVIDE CIRCUIT FOR POWER BAR STRIP.
- RACK MOUNTED RECEPTABLES, SEE DRAWING E3.1 FOR FURTHER DETAILS.

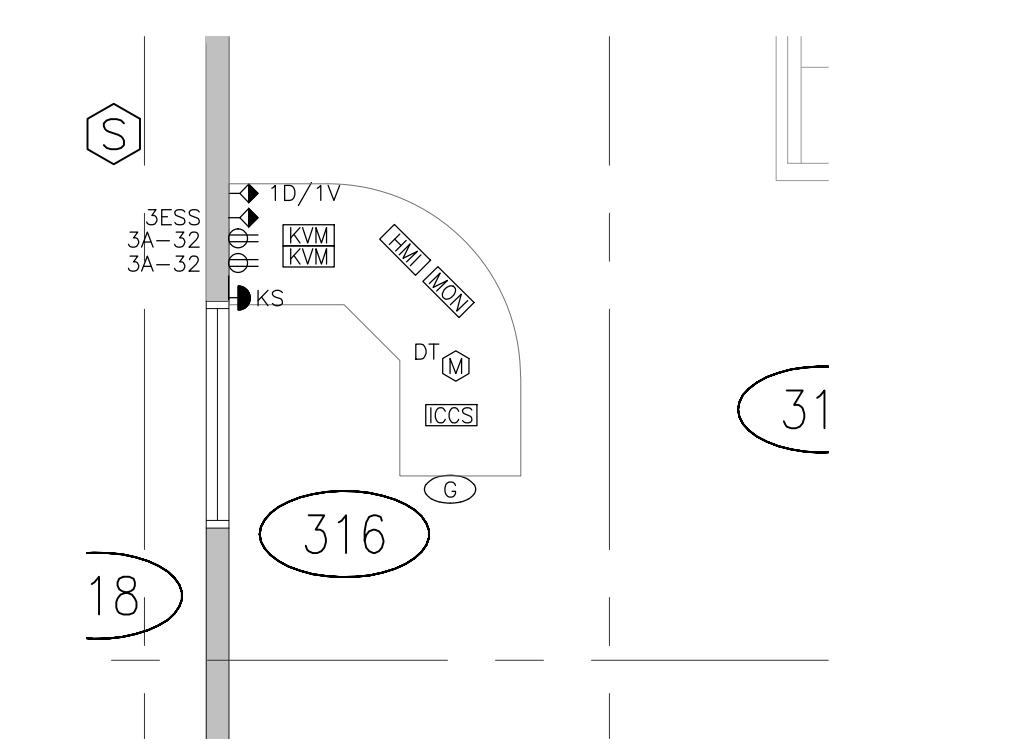
2 OBSERVATION AREA 01 DESK EQUIP.
 E3.2 1:50



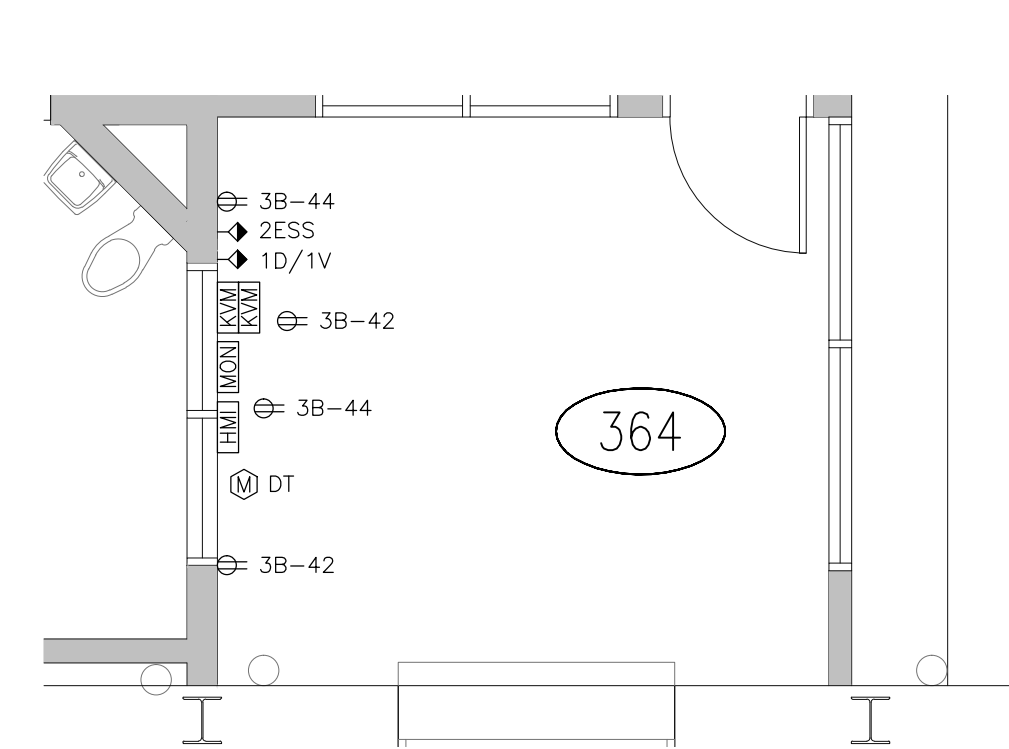
3 OBSERVATION AREA 02 DESK EQUIP.
 E3.2 1:50



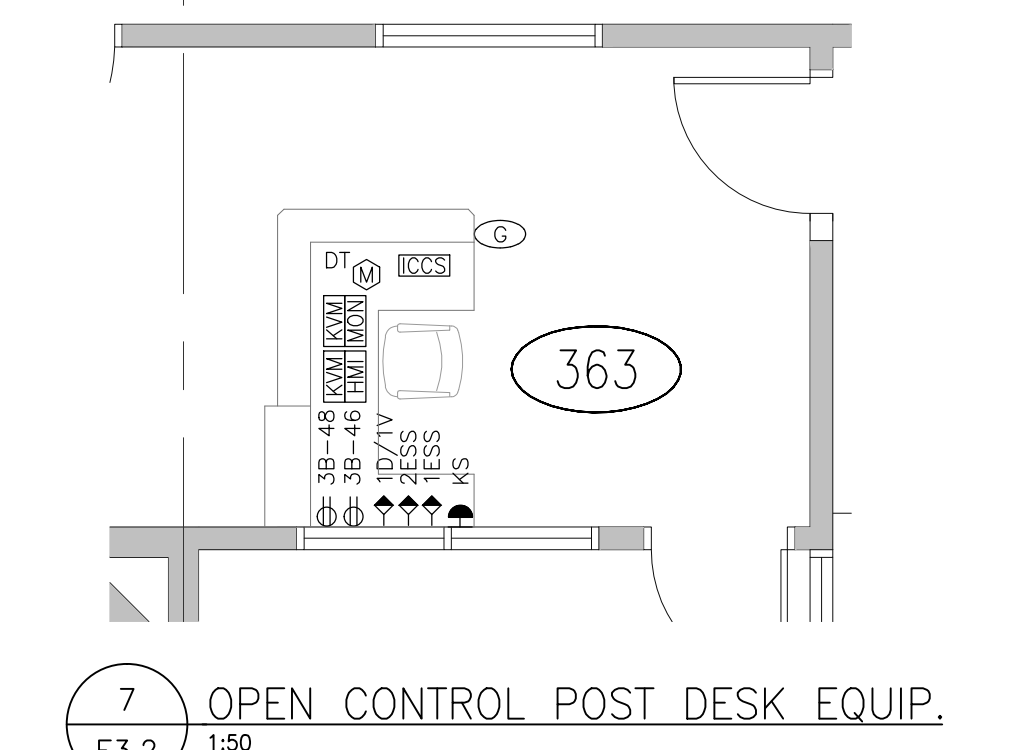
4 CLASS A CONTROL POST DESK EQUIP.
 E3.2 1:50



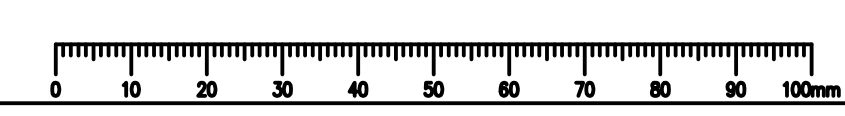
5 STRUCTURED LIVING ENVIRON. CONTROL POST DESK EQUIP.
 E3.2 1:50



6 OBSERVATION AREA 06 DESK EQUIP.
 E3.2 1:50



7 OPEN CONTROL POST DESK EQUIP.
 E3.2 1:50



Project title/Titre du projet
SHARED LEARNING FACILITY
 REGINA, SK

Approved by/Approve par
BDK,SBK,GTK
 Designed by/Concept par
BDK
 Drawn by/Dessine par
AC
 Project Manager/Administrateur de Projets
AC
 Architectural and Engineering Resources Manager/
 Ressources Architecturales et de Directeur d'Ingénierie

Drawing title/Titre du dessin
THIRD FLOOR
POWER/SYSTEM PLAN

Project No./No. du projet **05/2013** Sheet/Fauille **E3.2** Revision no./La Révision **1**