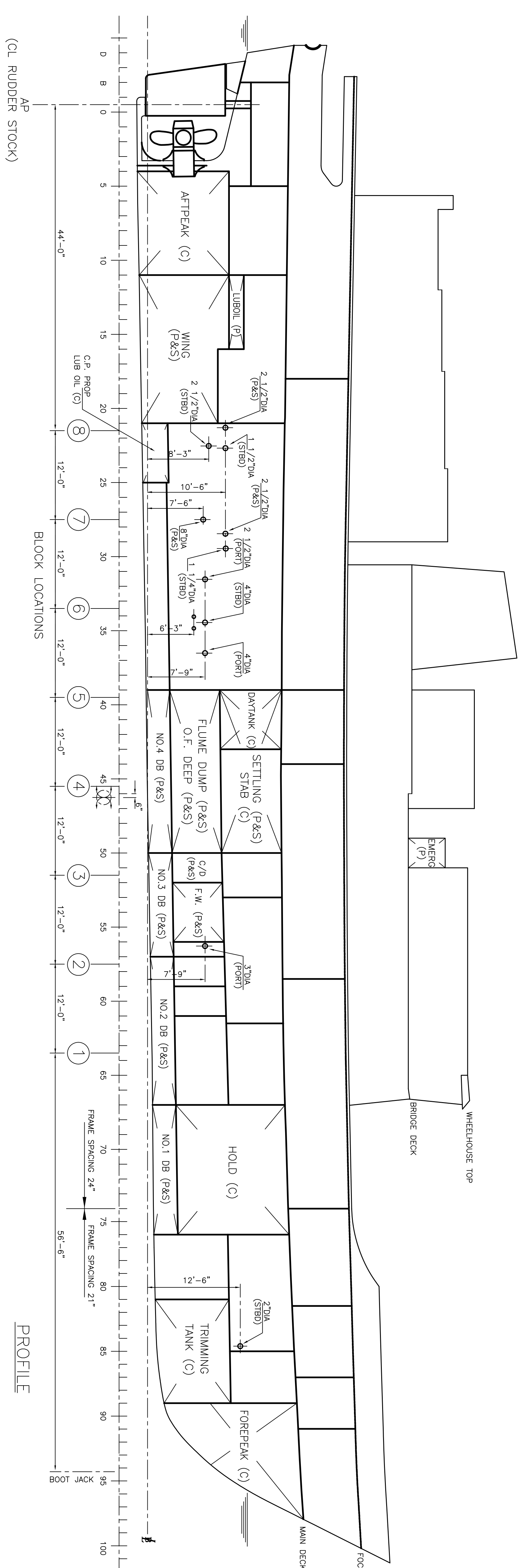


## PRINCIPAL PARTICULARS

LENGTH OVERALL	205'-0"
BREADTH (MOULDED)	40'-0"
DEPTH (MOULDED TO MAIN DECK)	18'-0"
LENGTH ON KEEL	164'-0"
DRAFT (FWD)	7'-2"
DRAFT (AFT)	8'-10"

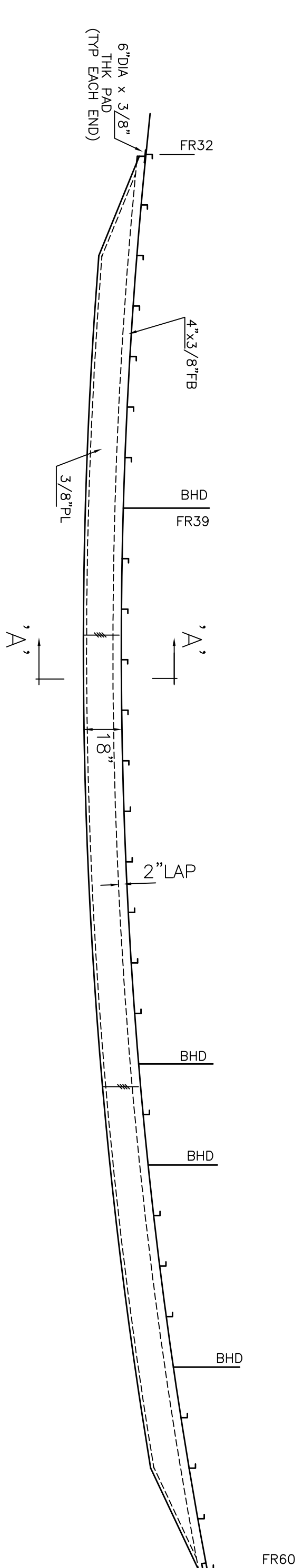
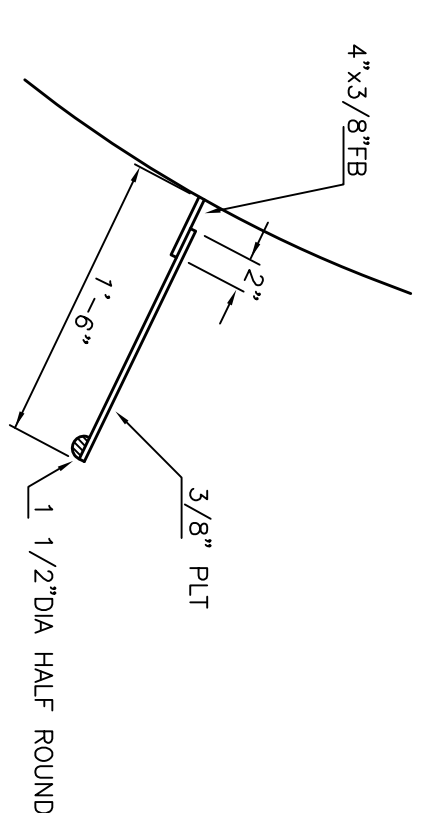
LEGEND

- ☐ OVERBOARD DISCHARGE
- ☒ DRAIN PLUG



SECTION 'A-A'  
SCALE: 1" = 1'-0"

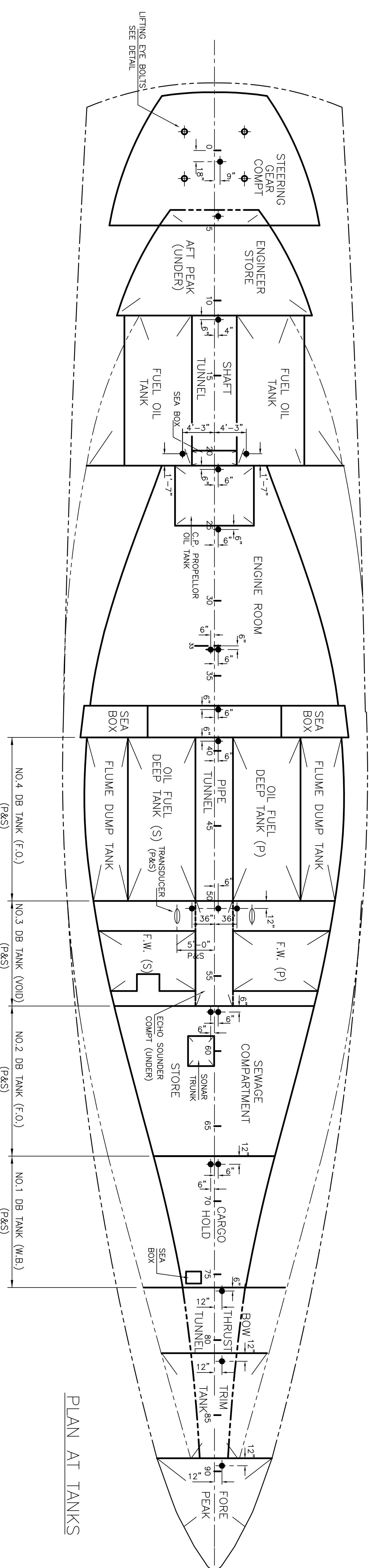
SCALE: 1" = 1'-0"



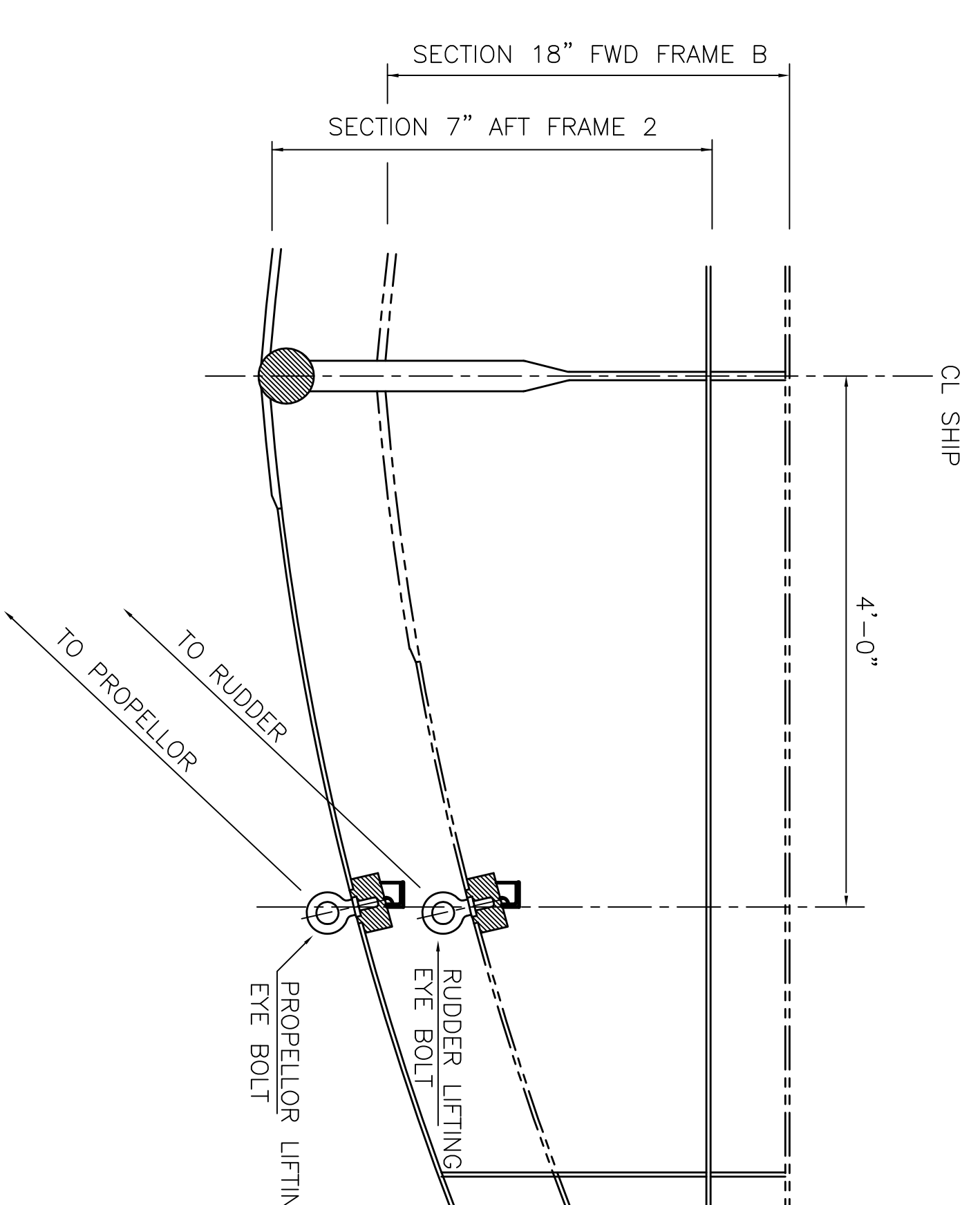
### DETAIL OF BILGE KEEL

SCALE: 1/4" = 1'-0"

NOTE: BILGE KEEL EXTENDS FROM FR32 TO FR60



## PLAN AT TANKS



### DETAIL OF LIFTING EYE BOLTS (P&S)

SCALE: 1/2" = 1'-0"

BLOCK NO.	BLOCK HEIGHT
1	2'-8"
2	1'-10"
3	1'-10"
4	1'-10"
5	1'-10"
6	1'-3"
7	2'-6"
8	5'-0"

[illegible]