

Note: Ramp not shown in Plan View

ISSUE	REV	DATE	REVISIONS	DRAFT	CHKD

GENERAL NOTES:

PRINCIPAL PARTICULARS

LENGTH 30' - 04"
OVERALL WIDTH 10' - 7"
HEIGHT AT DECK 4' - 4"
OVERALL HEIGHT 15' - 6"
WEIGHT 17500 lbs (7938 Kg)

REFERENCE DRAWINGS	

This drawing contains confidential proprietary information and may not be reproduced, nor used nor disclosed to others for any other purpose than for which it was issued without written permission from C&W Industrial.



P.O. BOX 51
BAY BULLS, N.F. CANADA, A0A 1C0
FAX # (709) 333-2124
PH # 1-800-353-3262
www.cwindrad.com

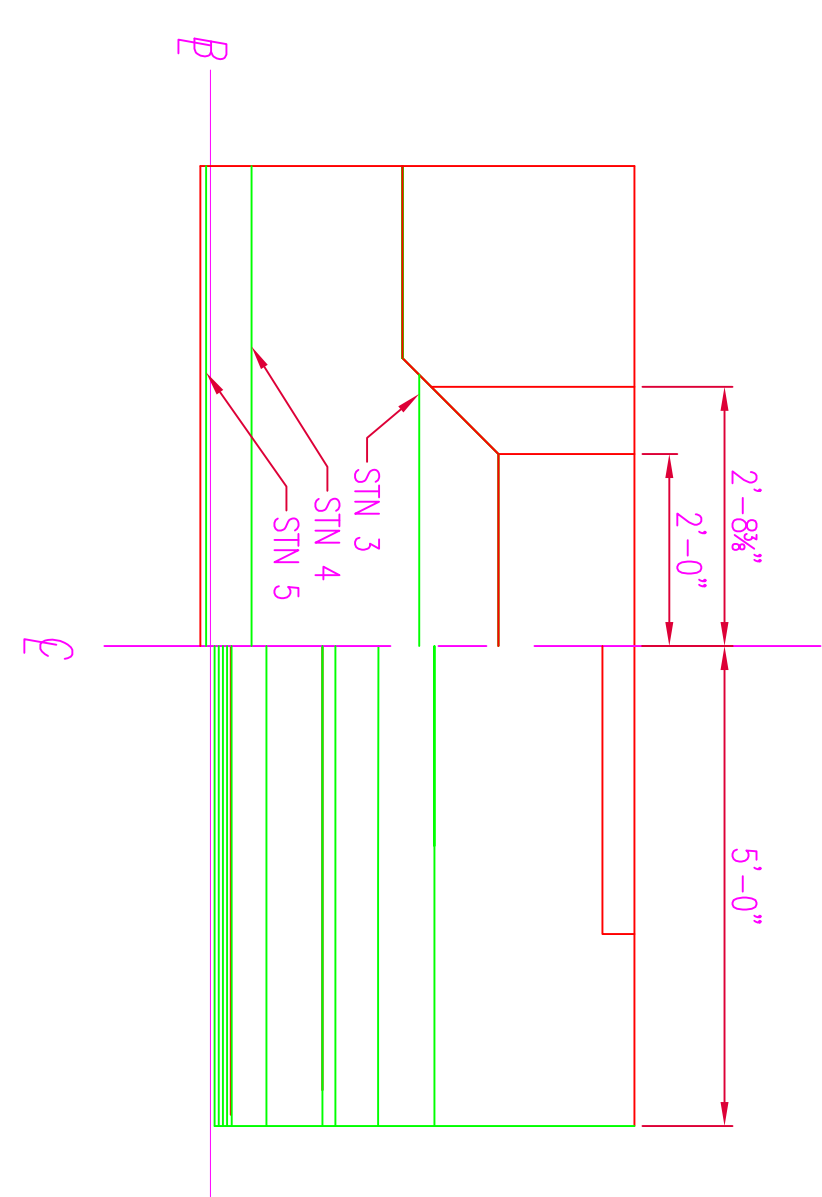
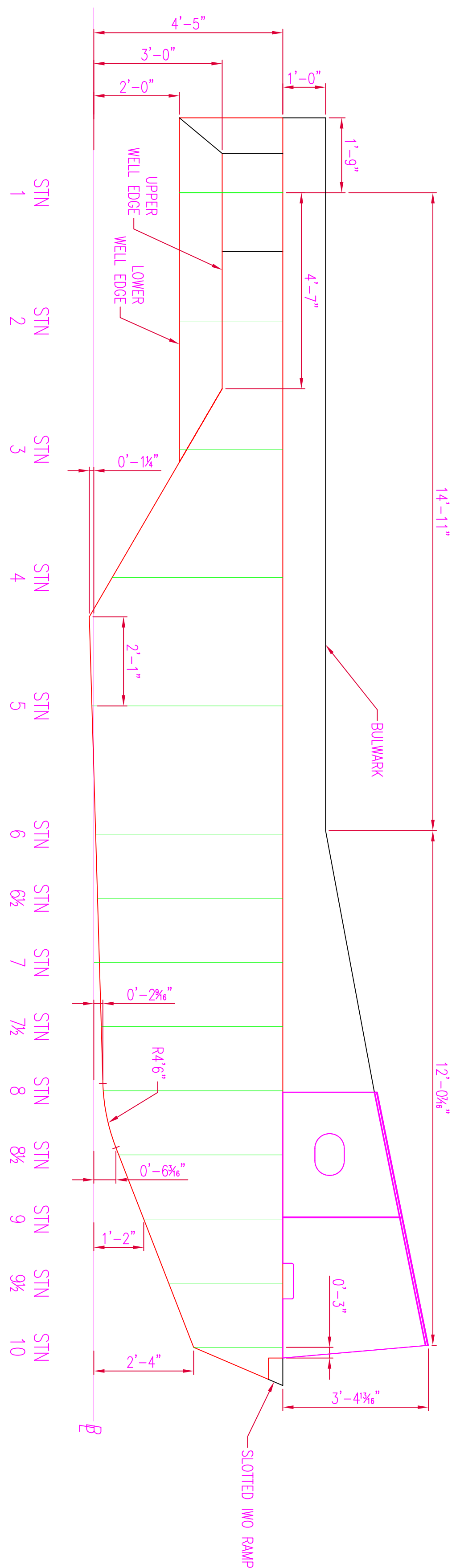
PROJECT: 30FT ALUMINUM S.P. BARGE

DRAWING TITLE:

GENERAL ARRANGEMENT

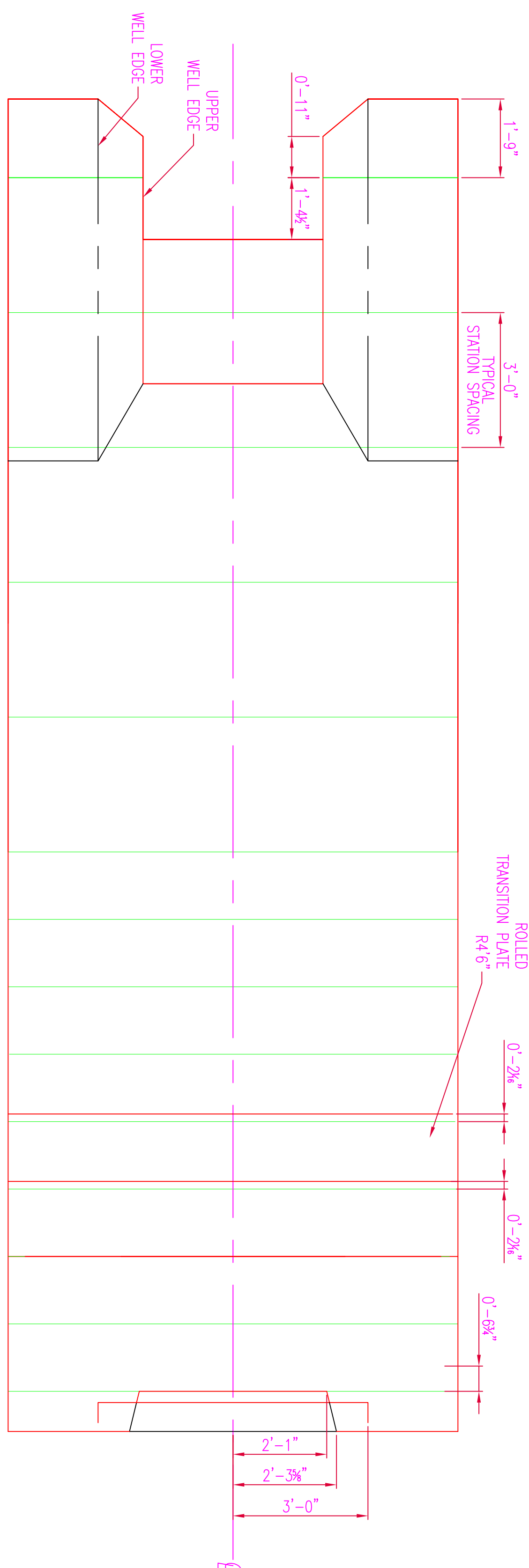
DRAWN: DENNIS CARNE	CHECKED: DAVID BATES
DATE: 09/20/01	SHEET: 1 OF 1
SCALE: 3/4"=1'-0"	PROJECT NO: 15953

CAD FILE: J:/BOATS/PROJECTS/CCG BARGE/15953-01



PROFILE

BODY PLAN



PLAN

TABLE OF OFFSETS

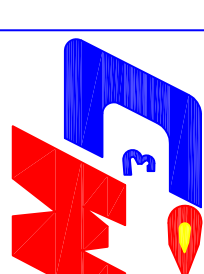
SIN 0	SIN 1	SIN 2	SIN 3	SIN 4	SIN 5	SIN 6*	SIN 6*	SIN 7	SIN 7*	SIN 8	SIN 8*	SIN 9	SIN 9*	SIN 10
5-0-0	5-0-0	5-0-0	5-0-0	5-0-0	5-0-0	5-0-0	5-0-0	5-0-0	5-0-0	5-0-0	5-0-0	5-0-0	5-0-0	5-0-0
AS INDICATED ON DRAWINGS														
AS INDICATED ON DRAWING														
AS INDICATED ON DRAWING										5-0-0	5-0-0	5-0-0	5-0-0	5-0-0
--	--	--	--	--	--	--	--	--	--	5-0-0	5-0-0	5-0-0	5-0-0	--
--	--	--	--	--	--	--	--	--	--	--	--	--	--	--
--	--	--	--	--	--	--	--	--	--	--	--	2-5-14	2-4-4	2-1-0

[illegible]

GENERAL NOTES:

REFERENCE DRAWINGS	

This drawing contains confidential proprietary information and may not be reproduced, nor used nor disclosed to others for any other purpose than for which it was issued without written permission from C&W Industrial.



P.O. BOX 51
BAY BULLS, NF CANADA, A0A 1C0
FAX # (709) 334-2124
PH # 1-800-563-3262
www.cwindfab.com

PROJECT:

30FT ALUMINUM BARGE

DRAWING III.E:

LINESPLAN AND OFFSETS

DRAWN: _____ **CHECKED:** _____

DATE: _____ SHEET: _____

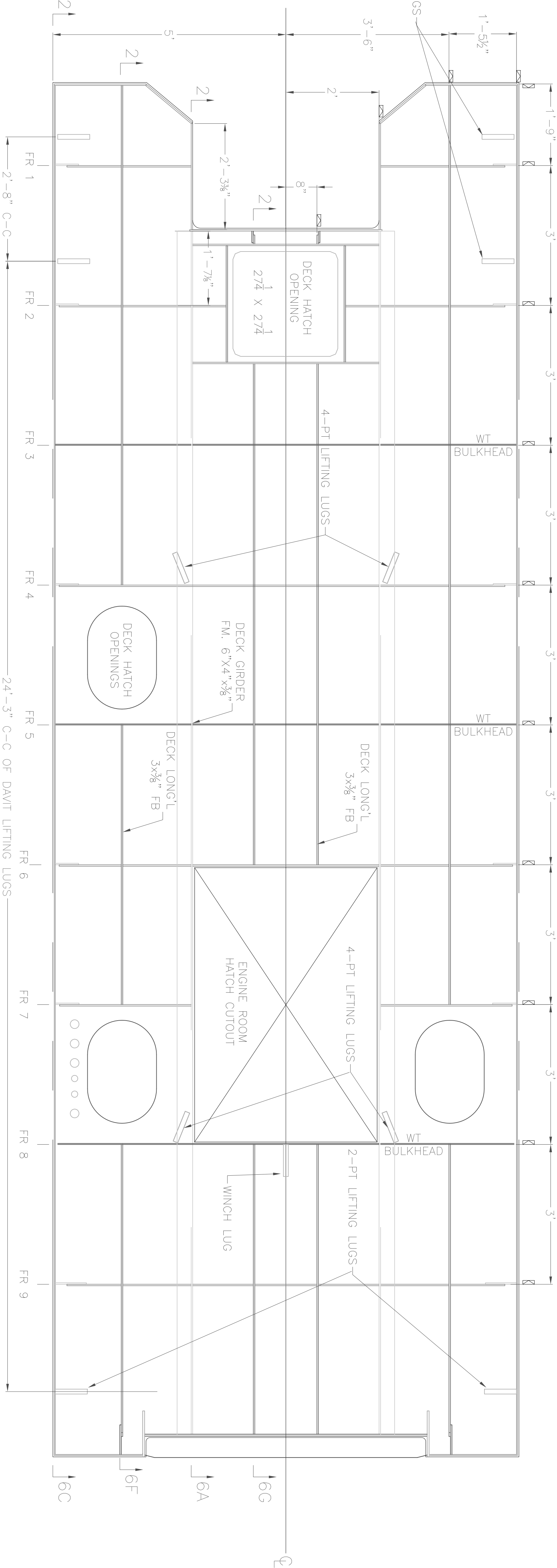
SCALE: PROJECT NO:

CAD FILE:

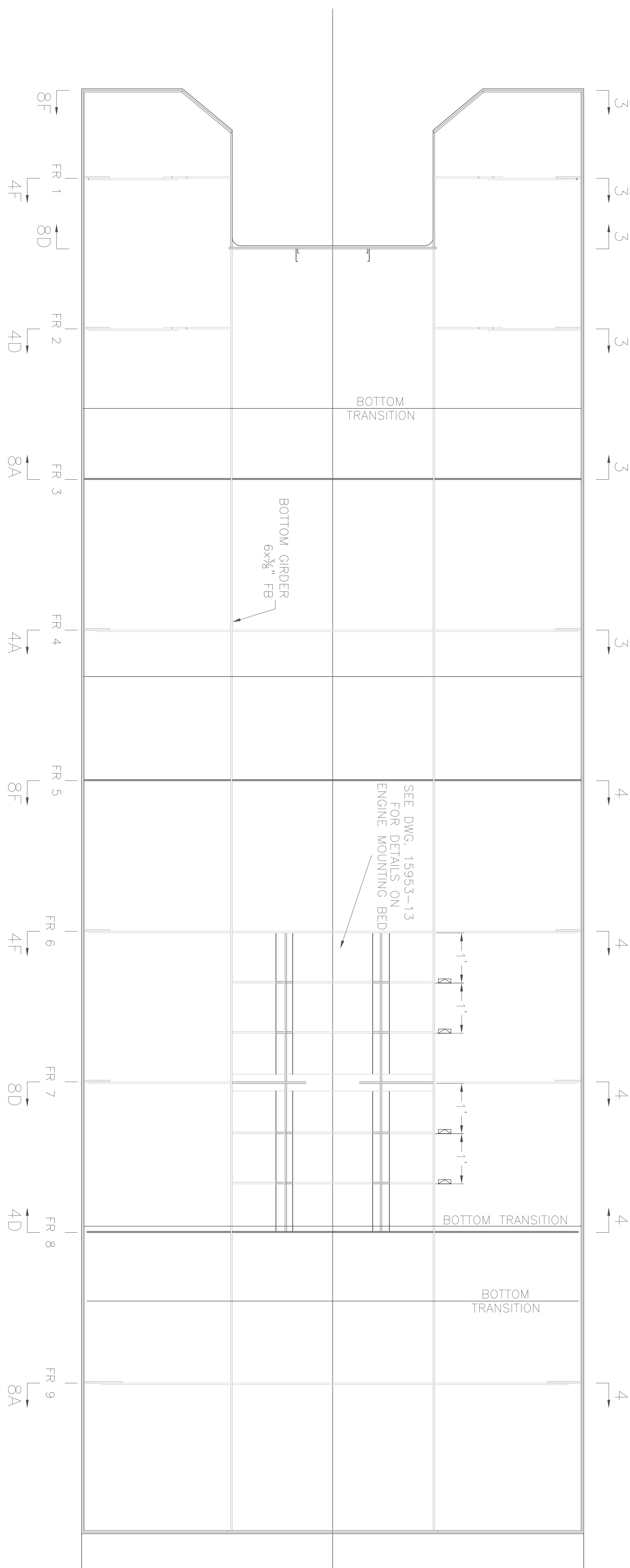
123456

ISSUE	REV	DATE	REVISIONS	DRAFT	CHKD

GENERAL NOTES:



PLAN AT MAIN DECK (Looking Up From Inside)



PLAN AT BOTTOM

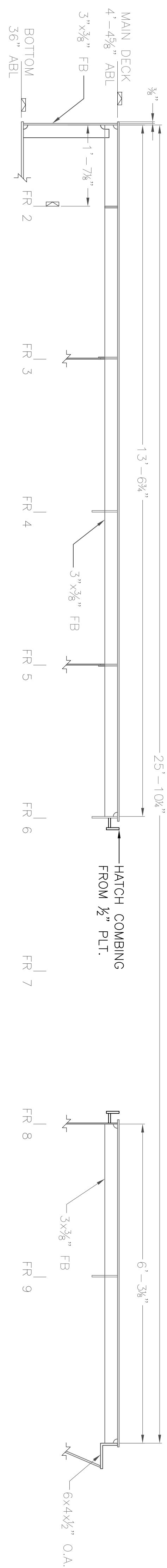
REFERENCE DRAWINGS	

This drawing contains confidential proprietary information and may not be reproduced, nor used nor disclosed to others for any other purpose than for which it was issued without written permission from C&W Industrial.

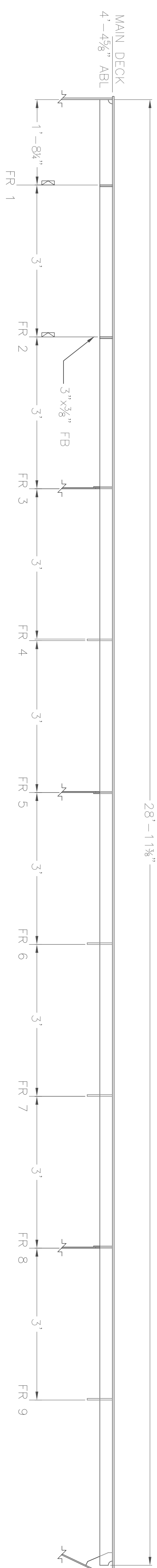


P.O. BOX 51
BAY BULLS, N.F. CANADA, A0A 1C0
FAX # (709) 334-2124
PH # 1-800-565-3262
www.cwindrad.com

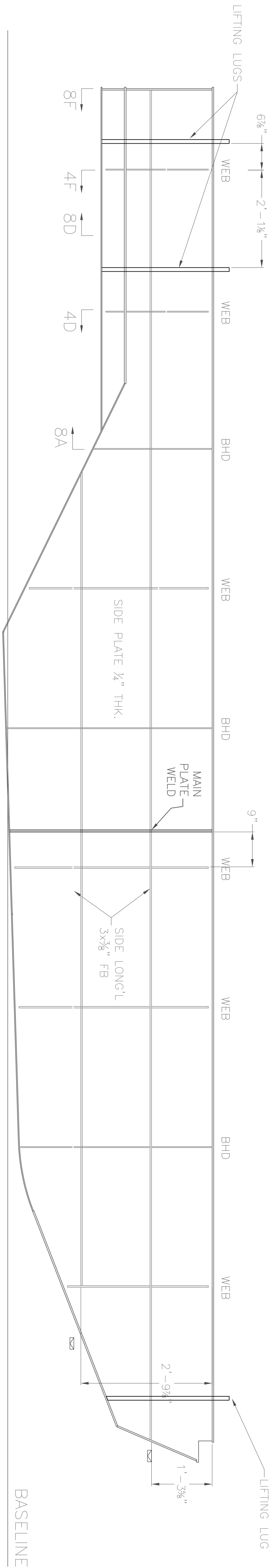
PROJECT: 30FT ALUMINUM S.P. BARGE	
DRAWING TITLE: STRUCTURAL DETAILS – PLAN AT MAIN DECK AND BOTTOM	
DRAWN: DENNIS CRANE	CHECKED: DAVID BATES
DATE: 09/20/01	SHEET: 1 OF 1
SCALE: 3/4"=1'-0"	PROJECT NO: 15953
CAD FILE: J:\BOATS\PROJECTS\CCG-BARGE\15953-03	



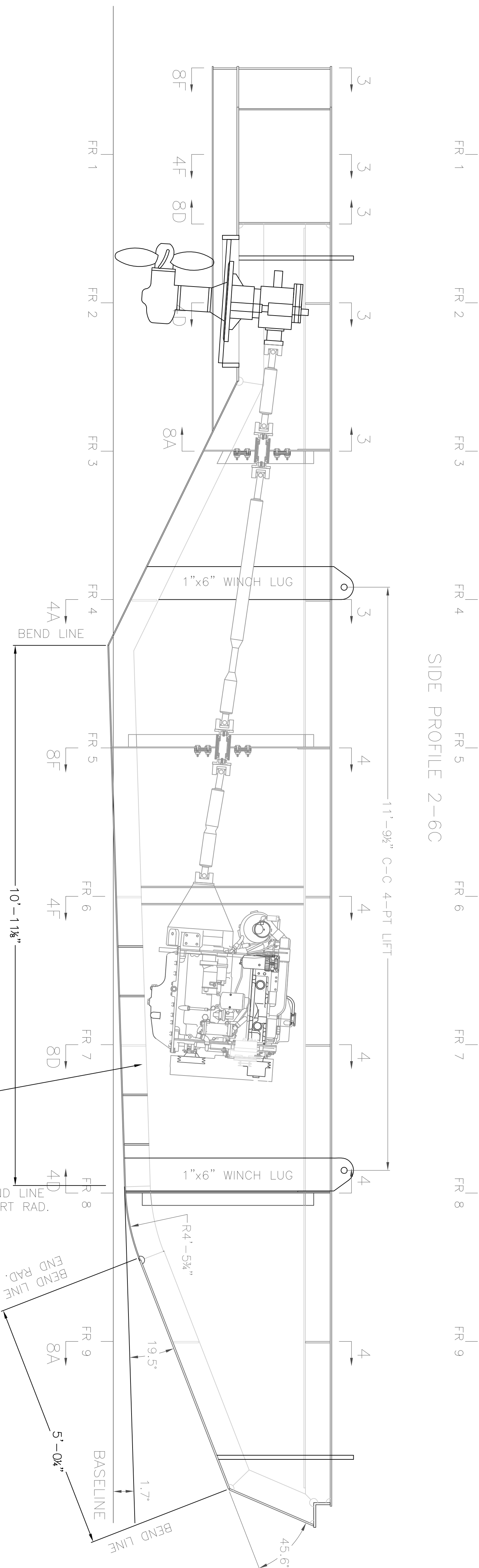
PROFILE 2-6G
DECK LONG'L AT 8" OCL
PORT SIDE SIMILAR BUT OPPOSITE HAND



PROFILE 2-6F
DECK LONG'L AT 3'6" OCL
PORT SIDE SIMILAR BUT OPOSITE HAND



SIDE PROFILE 2-6C



PROFILE 2-6A
DECK GIRDER AT 24" OCL
PORT SIDE SIMILAR BUT OPPOSITE HAND

[illegible]

GENERAL NOTES:

[illegible]

This drawing contains confidential proprietary information and may not be reproduced, nor used nor disclosed to others for any other purpose than for which it was issued without written permission from C&W Industrial.



EMI
INDUSTRIAL FABRICATION
AND MARINE EQUIPMENT LTD.

P.O. BOX 51
BAY BULLS, NF CANADA, AOA 1C0
FAX # (709) 334-2124
PH # 1-800-563-3262
www.cwindfab.com

PROJECT:

DRAWING TITLE:

STRUCTURAL DETAILS—PROFILES

DRAWN: _____ CHECKED: _____

DENNIS CRANE
DAVID BAILES

DATE: SHEET:

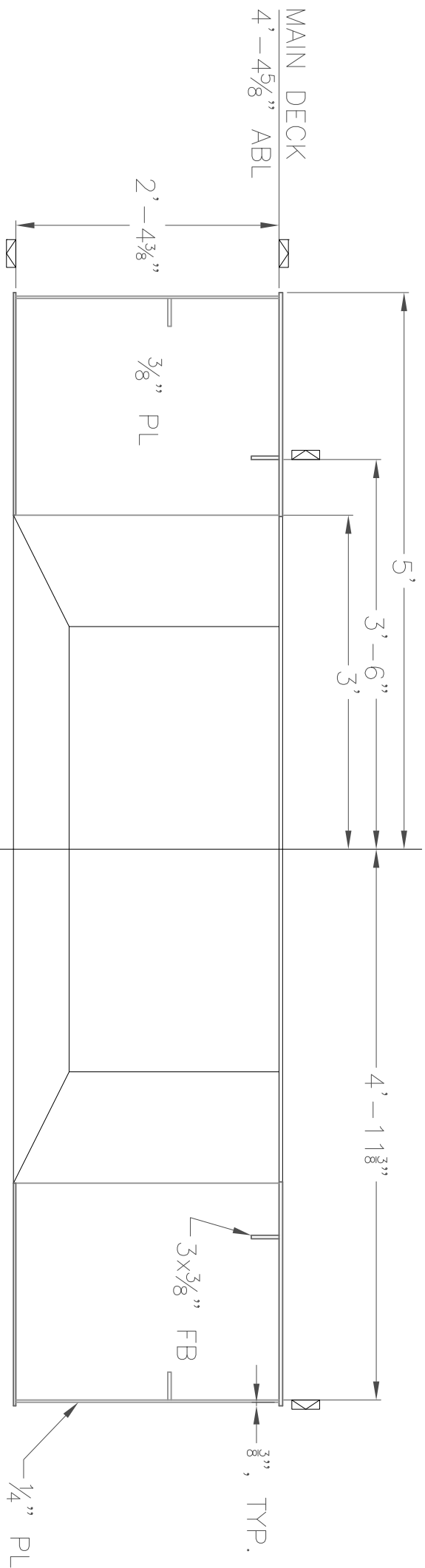
10/07/60

SCALE: 7 / 4" = 1' 0"

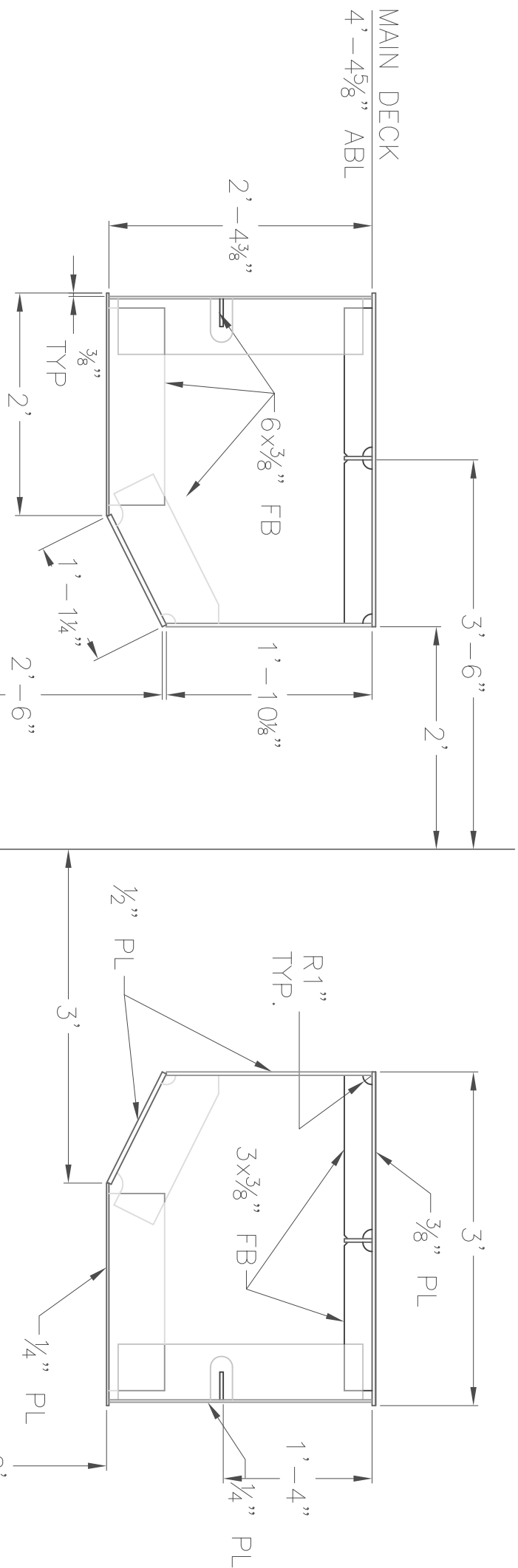
PROJECT NO: 40007

	C + I - C	1000
--	-----------------------	------

J:/BOATS/PROJECTS/CCG-BARGE/15953-04



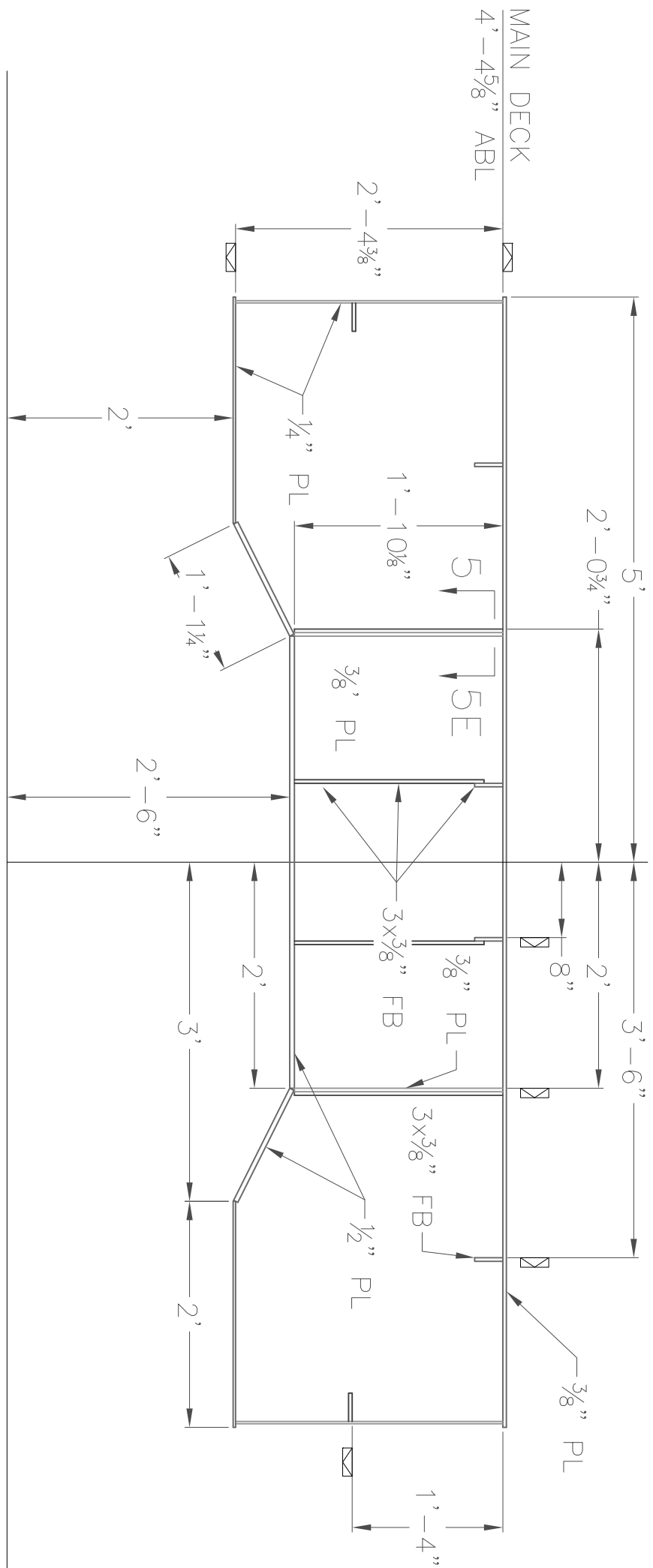
BASELINE



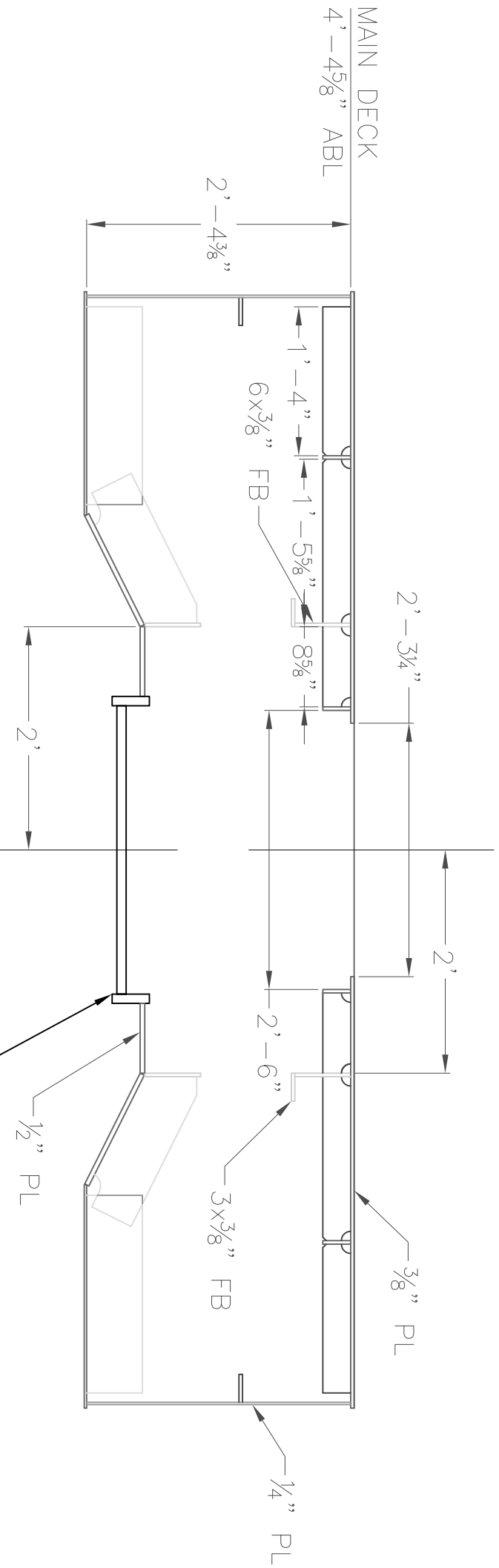
BASELINE

SECTION 3-8F
19' AFT FR 1
LOOKING FWD

SECTION 3-4F
FR 1 LOOKING FWD



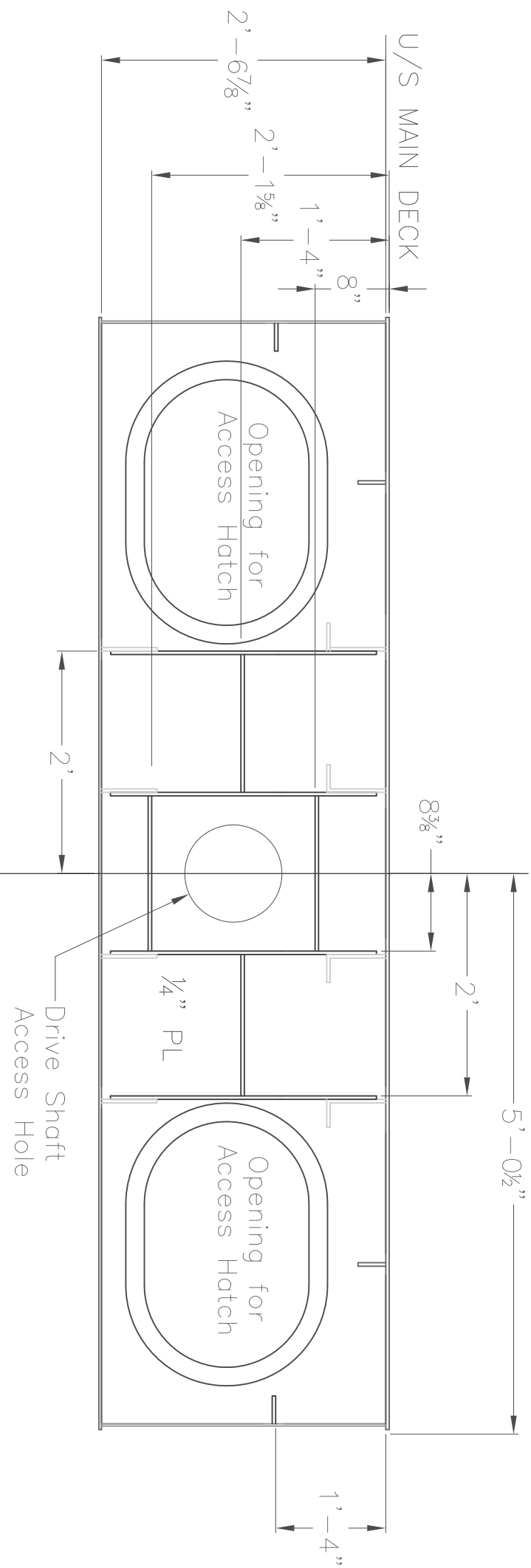
BASELINE



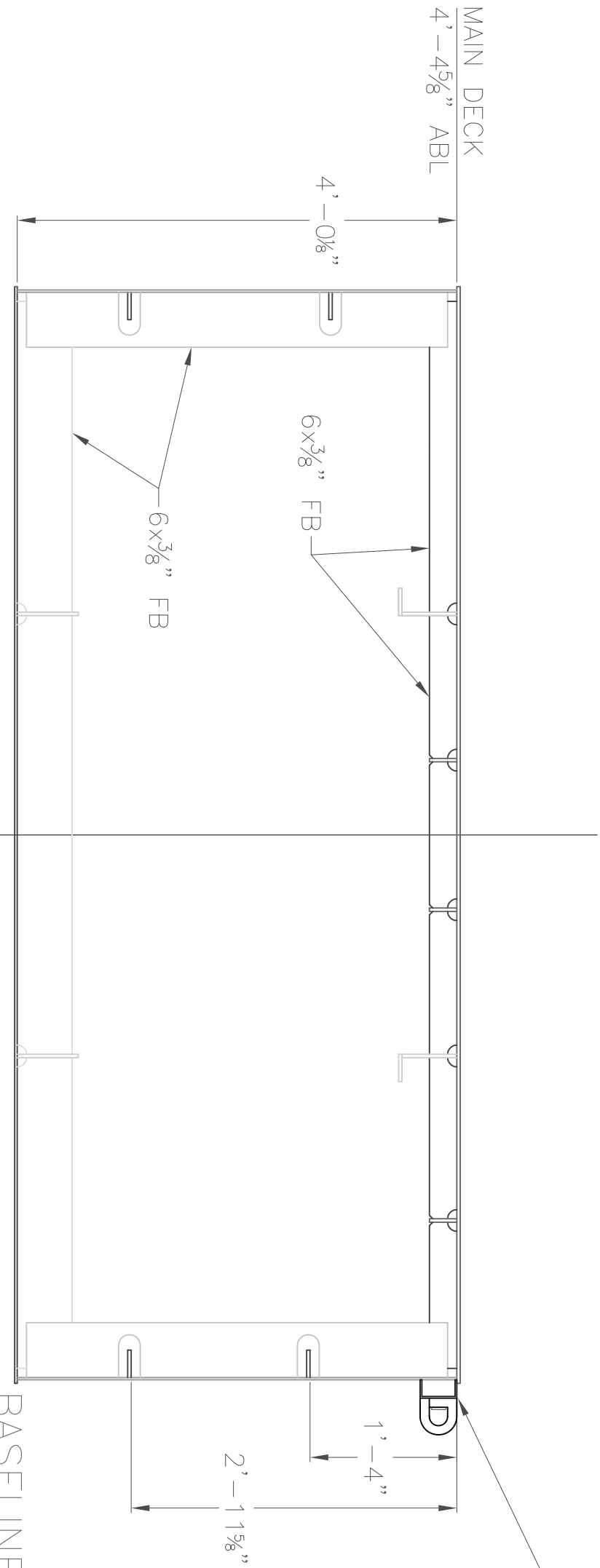
BASELINE

SECTION 3-8D
16 7/8\"/>

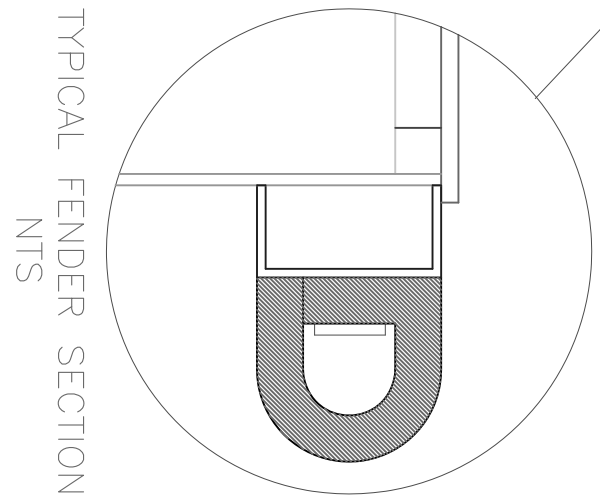
SECTION 3-4D
FR 2 LOOKING FWD



BASELINE




BASELINE



ISSUE	REV	DATE	REVISIONS	DRAFT	CHKD
GENERAL NOTES:					

PROJECT: 30FT ALUMINUM S.P. BARGE	
DRAWING TITLE: STRUCTURAL DETAILS-SECTIONS	
DRAWN: DENNIS CRANE	CHECKED: DAVID BATES
DATE: 09/20/01	SHEET: 1 OF 1
SCALE: 3/4"=1'-0"	PROJECT NO: 15953

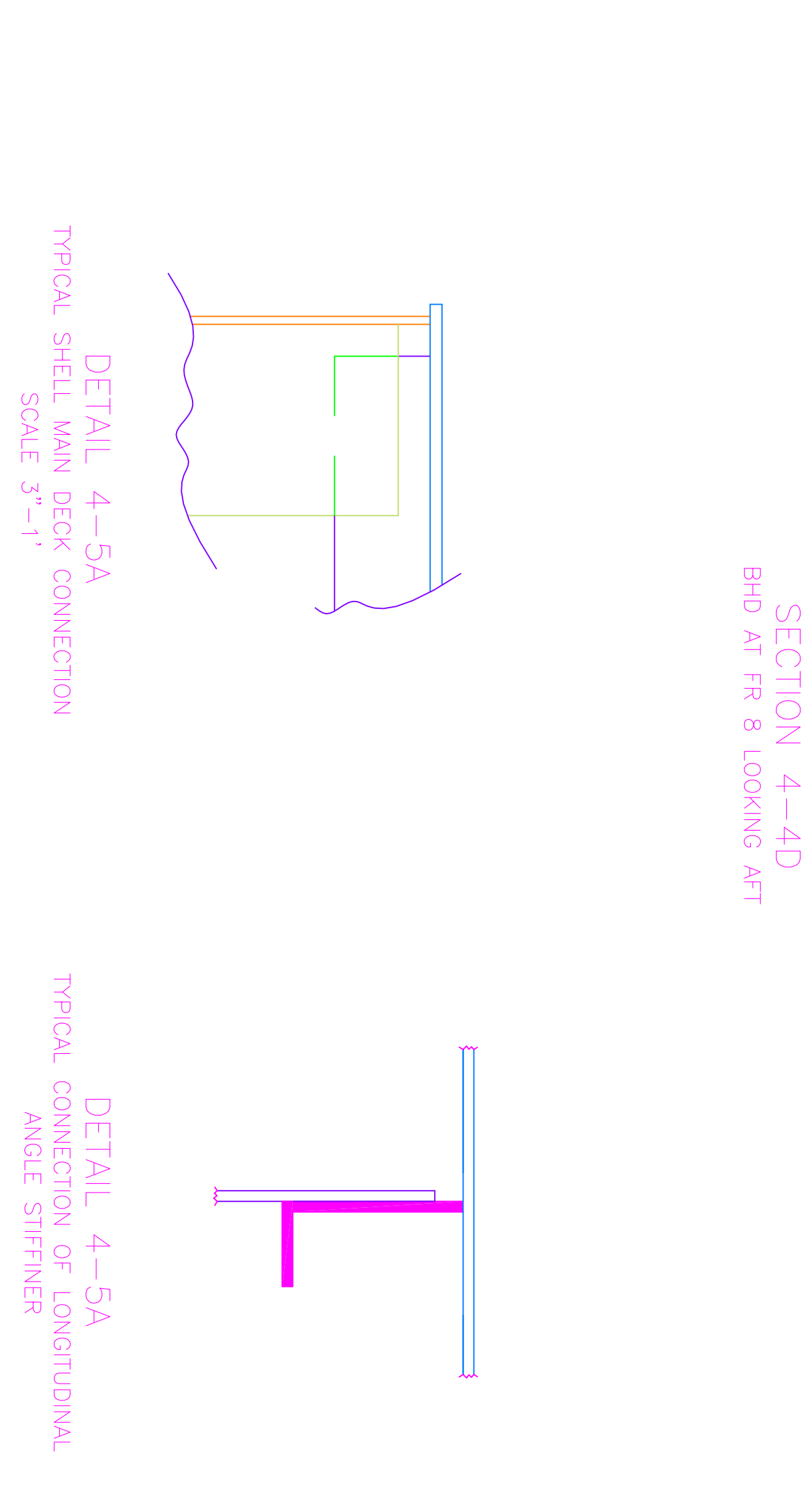
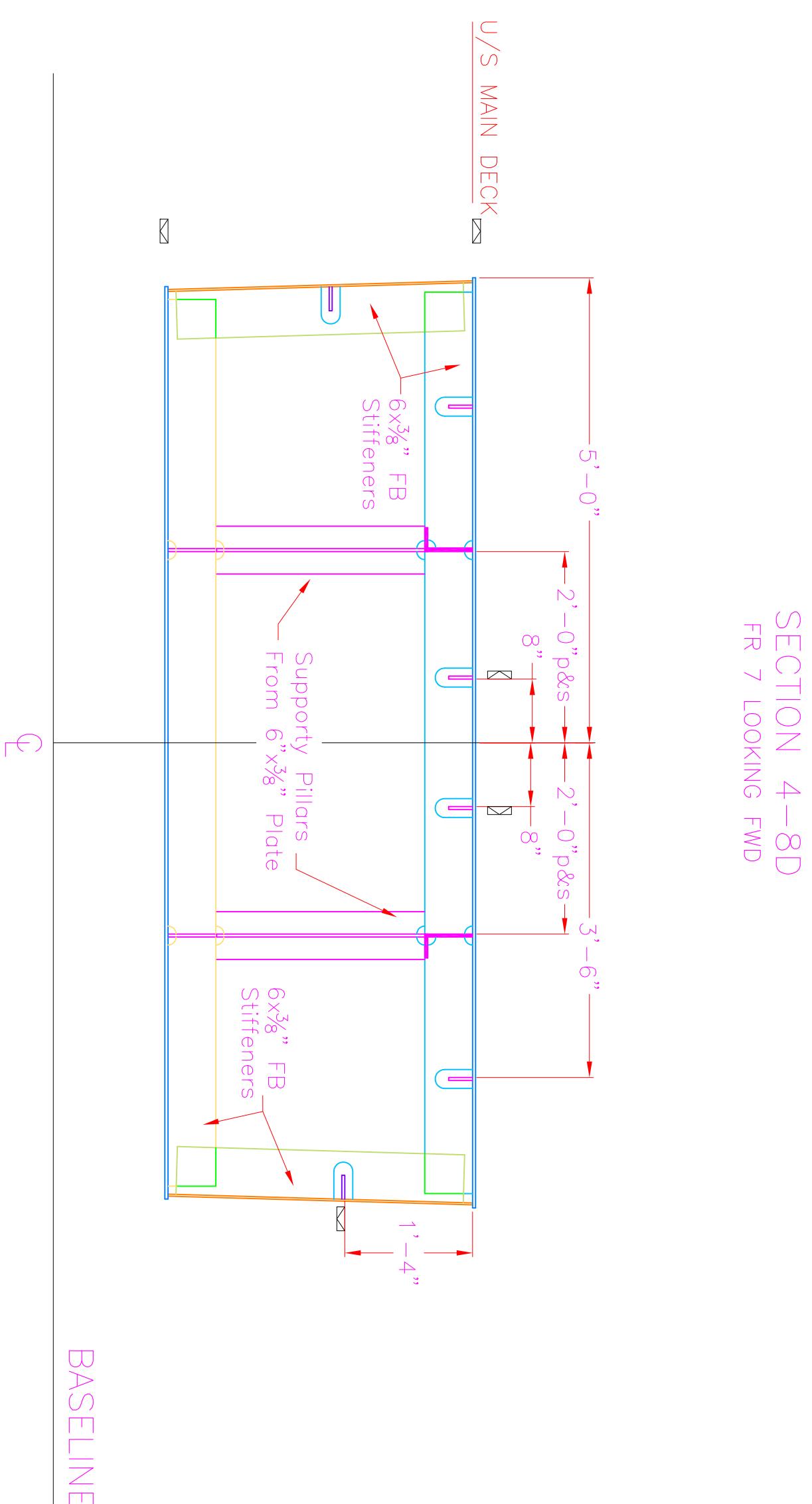
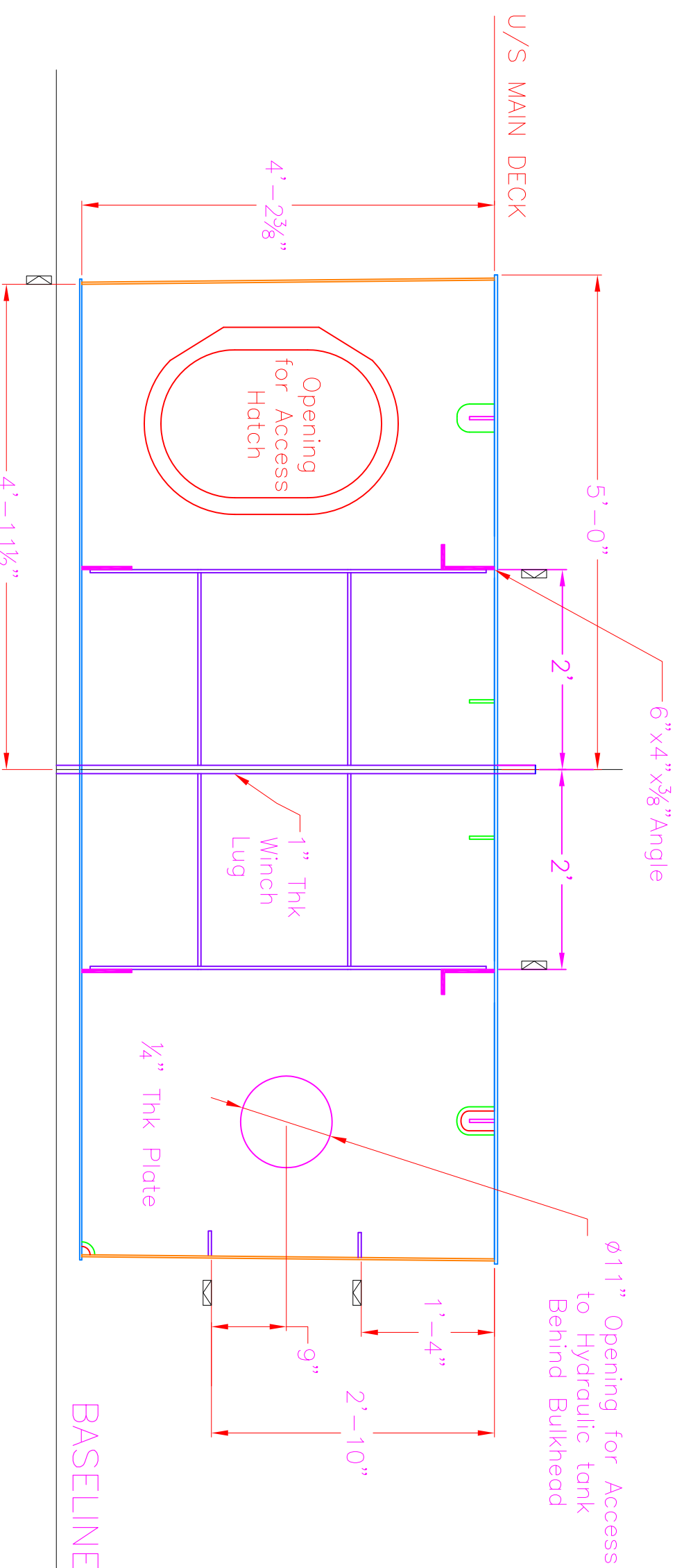
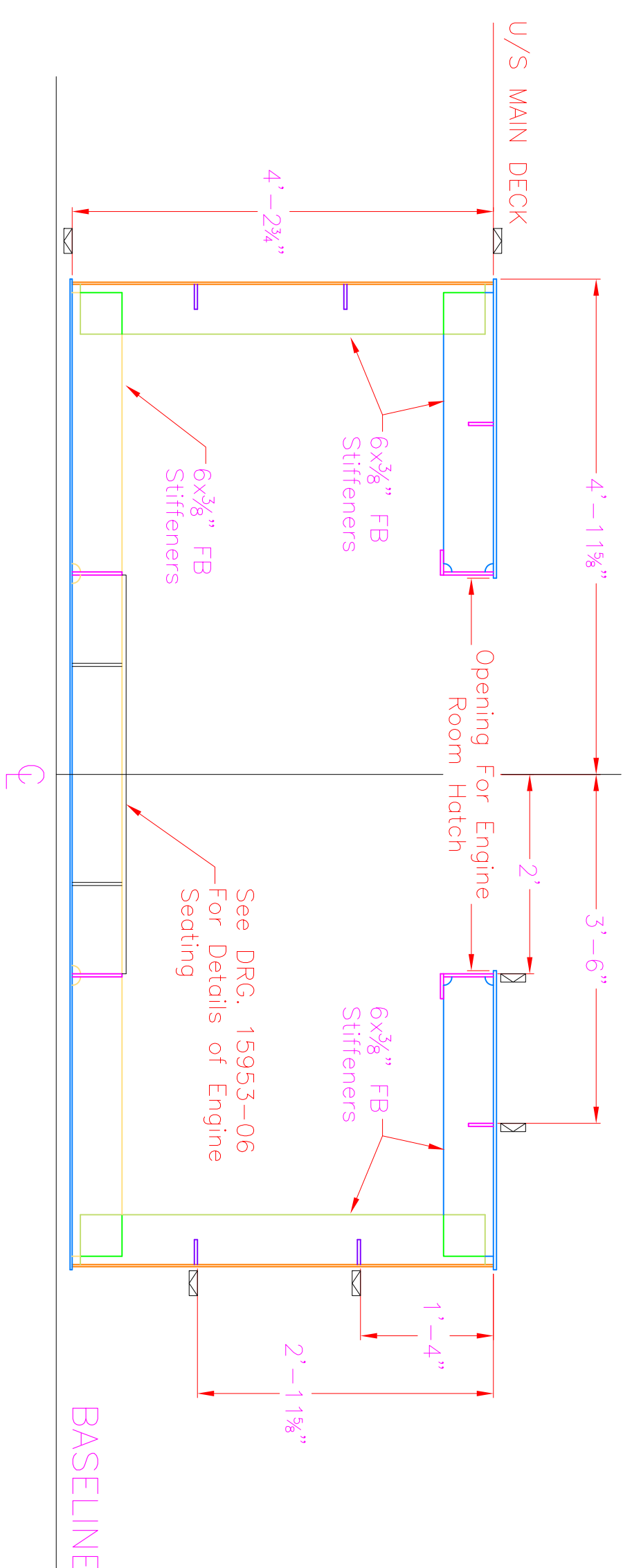
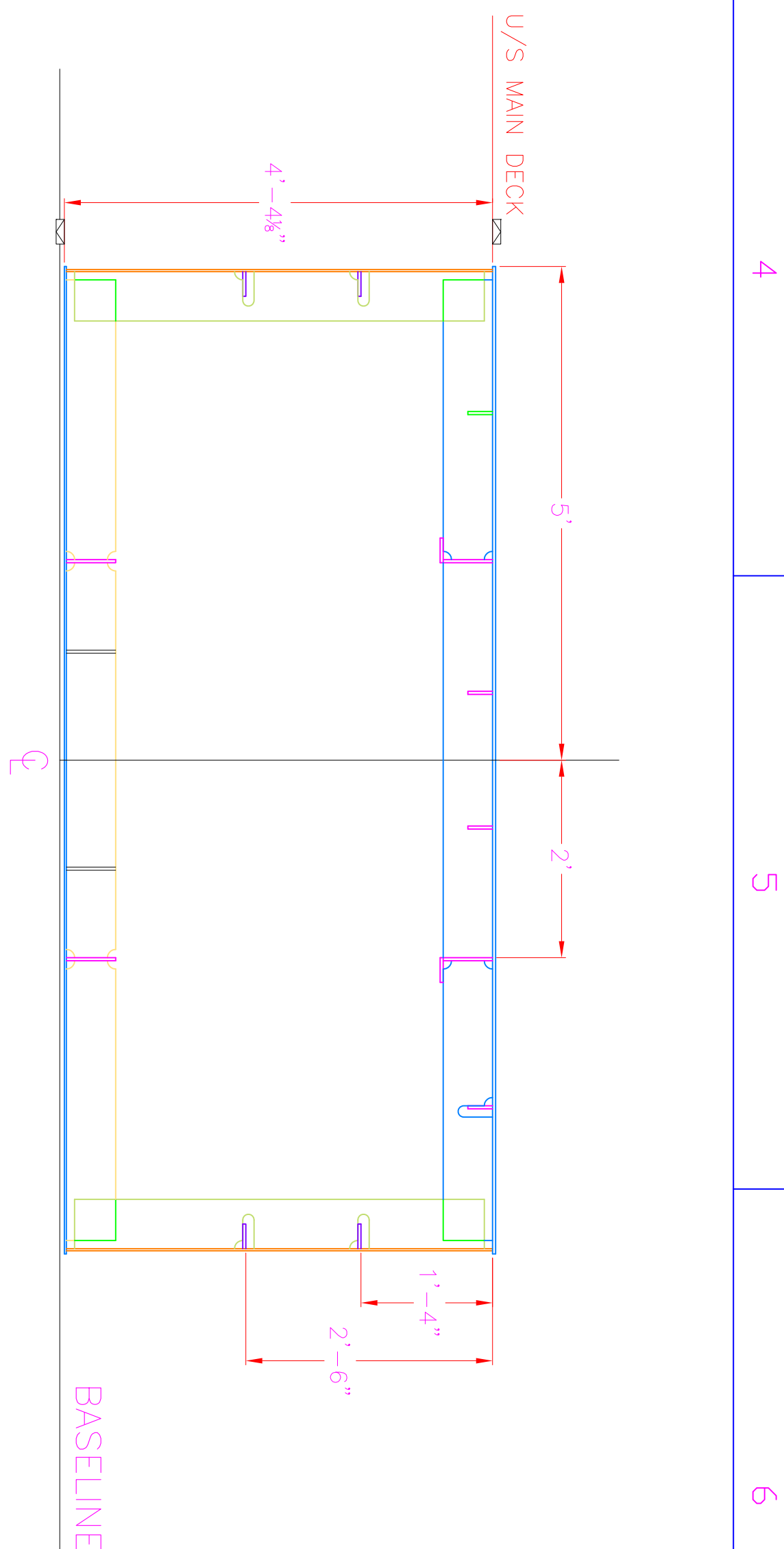
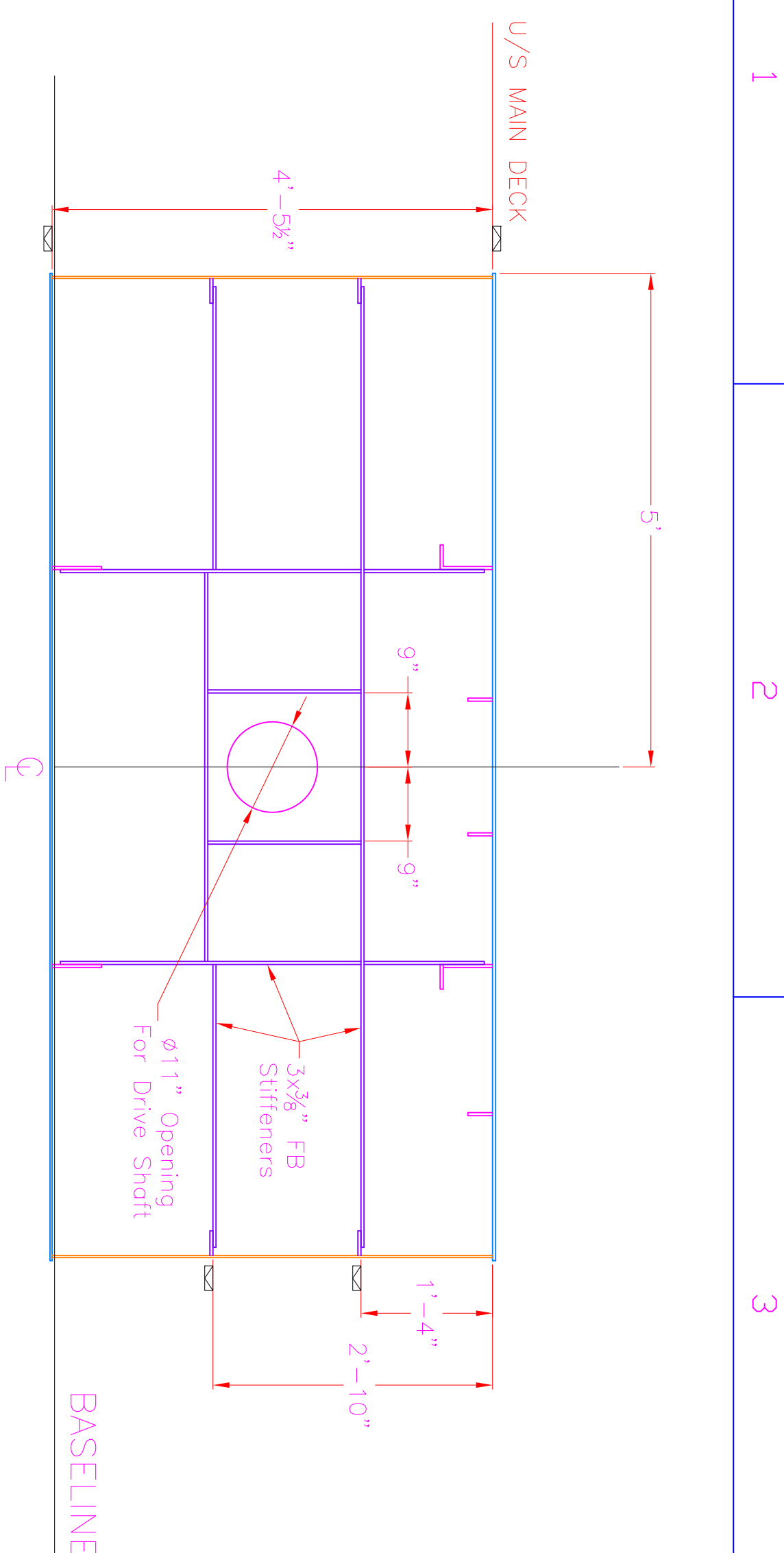
This drawing contains confidential proprietary information and may not be reproduced, nor used nor disclosed to others for any other purpose than for which it was issued without written permission from C&W Industrial.



INDUSTRIAL FABRICATION
AND MARINE EQUIPMENT LTD.

P.O. BOX 51
BAY BULLS, N.F. CANADA, A0A 1C0
FAX # (709) 334-2124
PH # 1-800-585-3262
www.cwindfab.com

REFERENCE DRAWINGS

[illegible]

GENERAL NOTES:

This drawing contains confidential proprietary information and may not be reproduced, nor used nor disclosed to others for any other purpose than for which it was issued without written permission from C&W Industrial.

**INDUSTRIAL FABRICATION
AND MARINE EQUIPMENT LTD.**



P.O. BOX 51
BAY BULLS, NF CANADA, A0A 1C0
FAX # (709) 334-2124
PH # 1-800-553-3262
www.cwindfab.com

PROJECT:

DRAWING TITLE:

STRUCTURAL DETAILS – SECTIONS

DRAWN: _____ **CHECKED:** _____

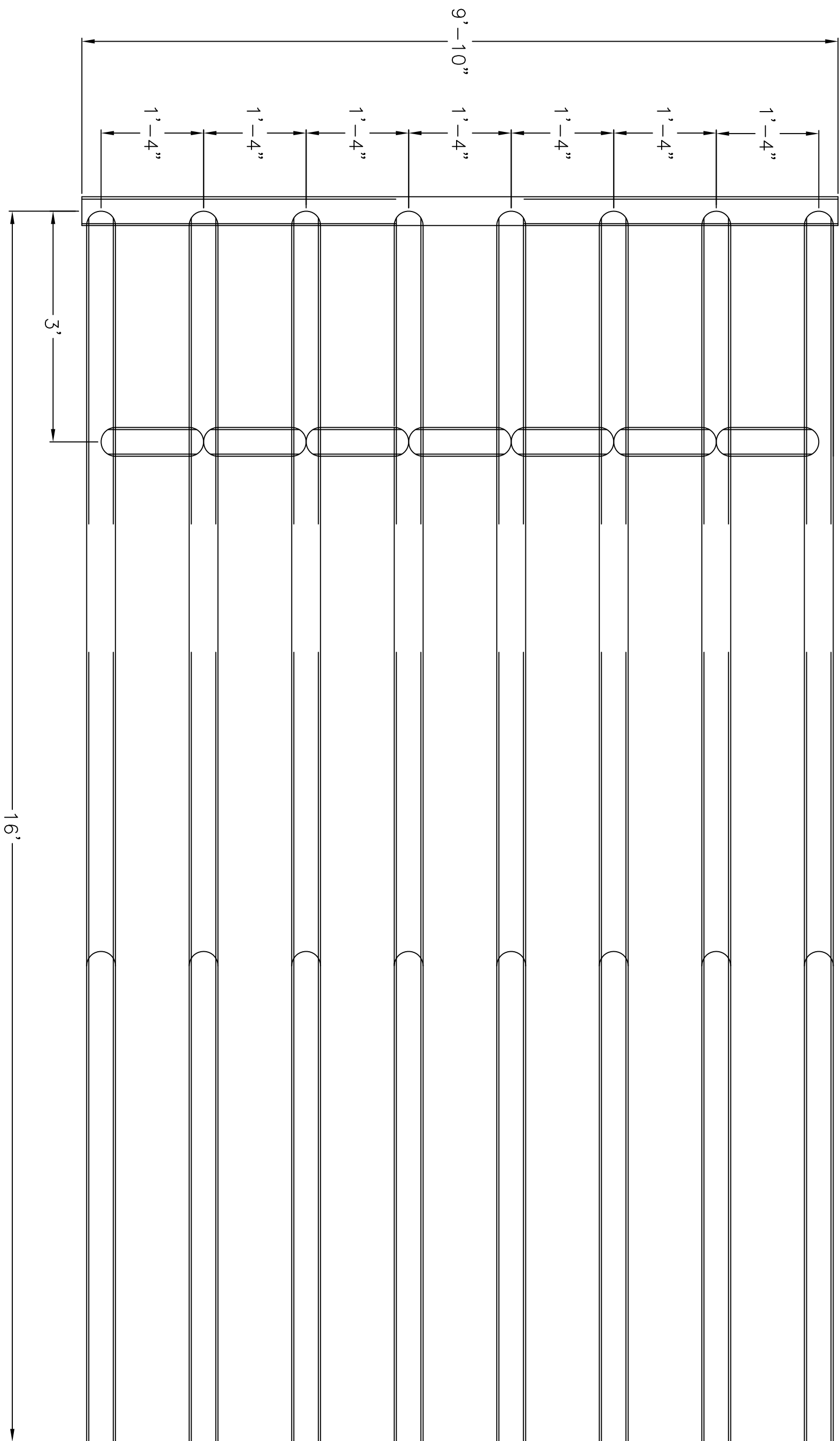
DENNIS CRANE DAVID BATES

DATE: SHEET:

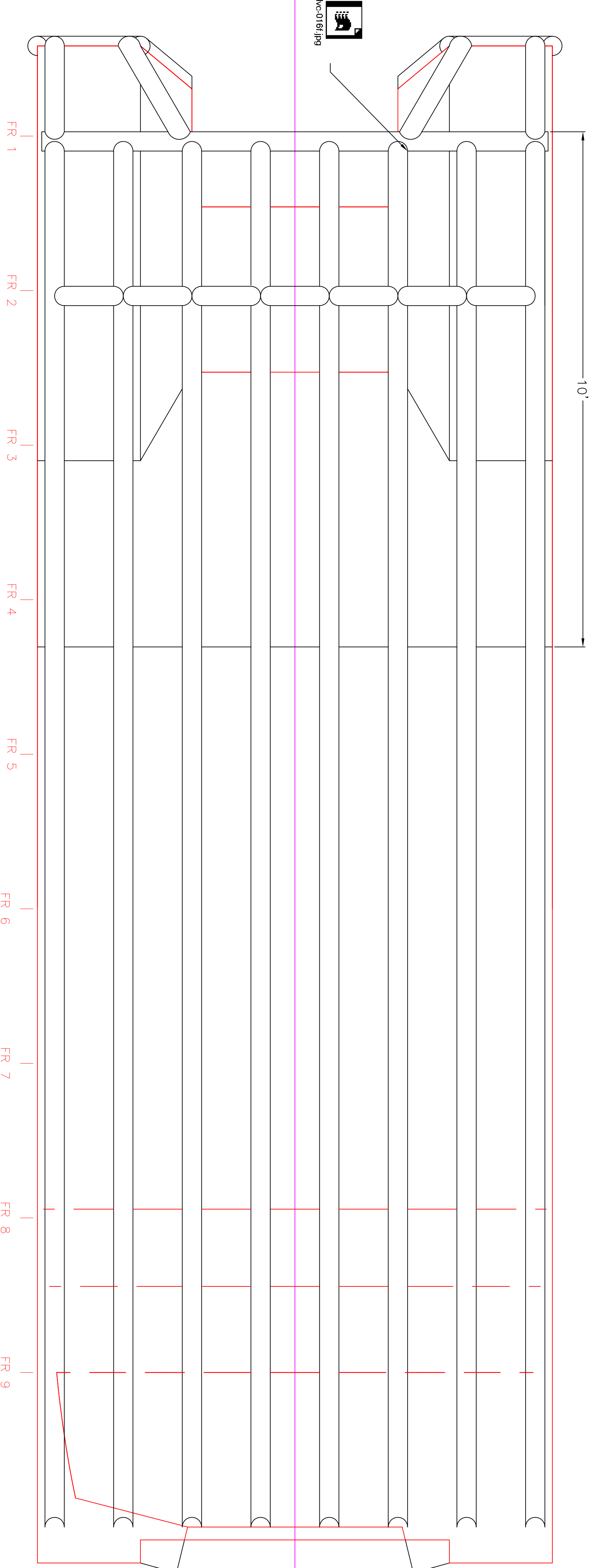
10/20/01

SCALE: PROJECT NO:

CAD FILE:



NOTE: All Bottom fendering is 4" Schedule 80 Aluminum Pipe.



Mc-0161.p9

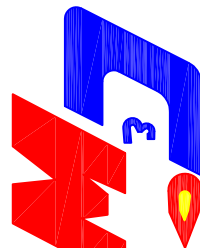
PLAN AT BOTTOM
OF 4" Sch. 80 FENDERING

ISSUE	REV	DATE	REVISIONS	DRAFT	CHKD

GENERAL NOTES:

REFERENCE DRAWINGS	

This drawing contains confidential proprietary information and may not be reproduced, nor used nor disclosed to others for any other purpose than for which it was issued without written permission from C&W Industrial.



INDUSTRIAL FABRICATION
AND MARINE EQUIPMENT LTD.
P.O. BOX 51
BAY BULLS, N.E. CANADA, A0A 1C0
FAX # (709) 334-2124
PH # 1-800-385-3262
www.cwindrad.com

PROJECT: 30FT ALUMINUM S.P. BARGE

DRAWING TITLE:

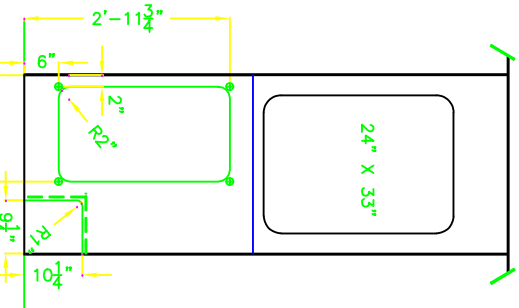
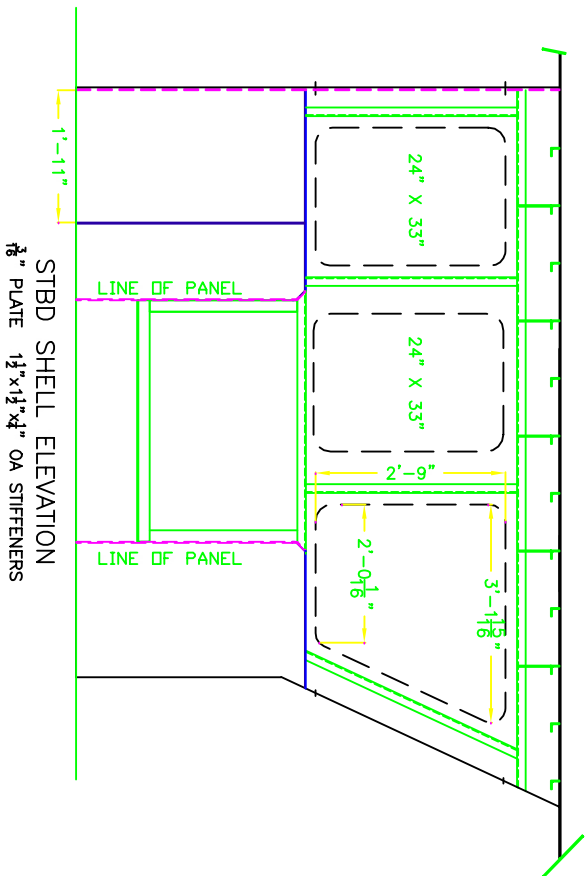
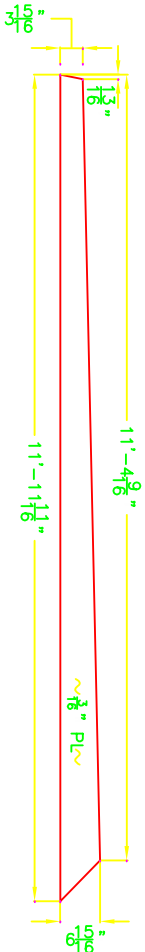
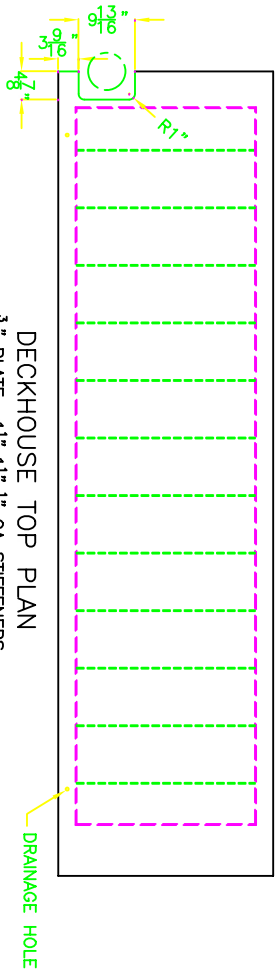
SKETCH DETAIL & GENERAL BOTTOM FENDERING

DRAWN: DENNIS CRANE	CHECKED: DAVID BATES
---------------------	----------------------

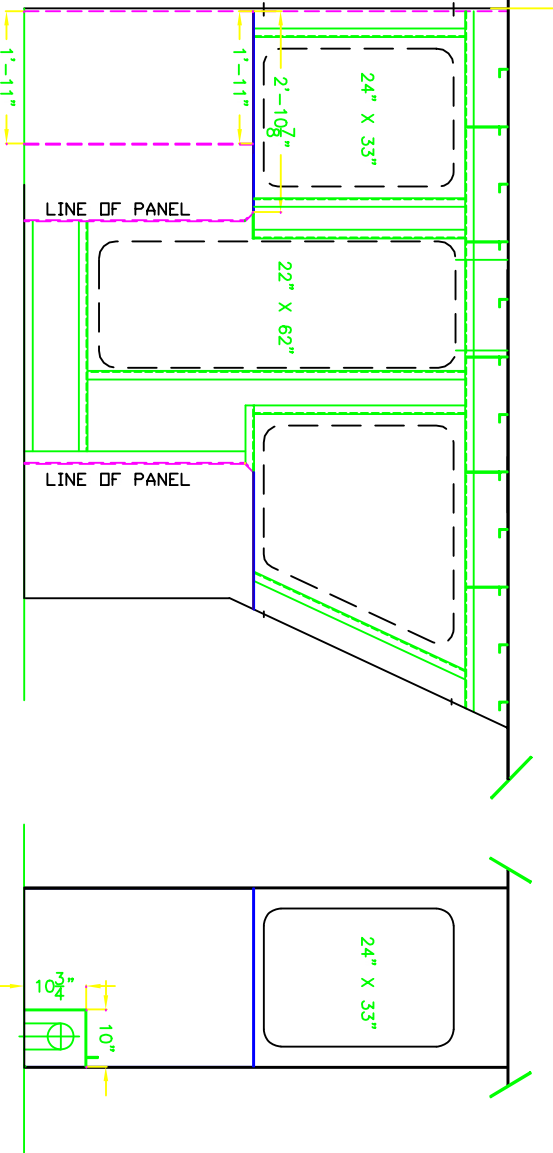
DATE: 09/20/01	SHEET: 1 OF 1
----------------	---------------

SCALE: 3/4"=1'-0"	PROJECT NO: 15953
-------------------	-------------------



CAD FILE: J:/BOATS/PROJECTS/COG-BARGE/15953B-07

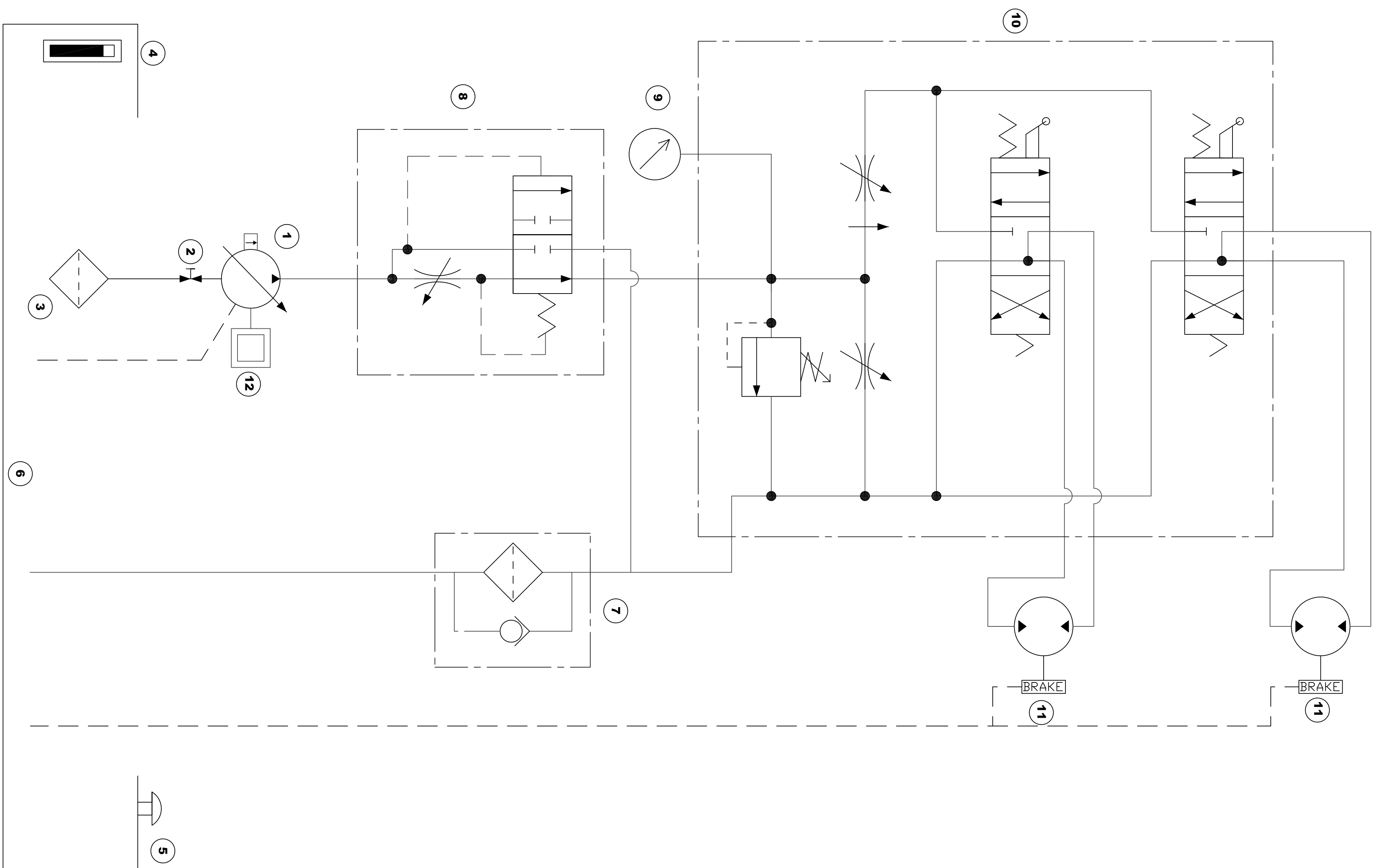


PORT SHELL ELEVATION
1/8" PLATE 1 1/2"x1 1/4" OA STIFFENERS



C	REVISED	AU17 '04	AJM	WMM
B	REVISED - AS BUILT	AU11 '04	AJM	WMM
A	ORIGINAL ISSUE			
no.	revision	date	by	appn.

 Fisheries and Oceans Coast Guard	 Pêches et Océans Garde côtière	drawing title—dessin titre 28' SELF-PROPELLED BARGE DECKHOUSE STRUCTURE		drawn—dessiné WMM
site		scale—échelle 3/8" = 1'	project no. PMC 04 — 028	checked—vérifié
		date—date MARCH 25, 2004	drawing no.—no du dessin PMC 04 — 028 — 012	approved—approuvé
			sheet — feuille 1 OF 1	



HYDRAULIC EQUIPMENT

ITEM No.	EQUIPMENT DESCRIPTION	MANUFACTURER & MODEL
1	Pressure Compensated Piston Pump	Parker PAV/C33-9BL2-25
2	1-1/2" Ball Valve	GH Factory GH7004-150
3	Suction Strainer	1 1/2" FPC SE-30-100
4	Sight Level / Temperature Gauge	Mailhot LS-5
5	Filler/ Breather	Mailhot MHFB18
6	50 U.S. Gallon Reservoir	
7	Filter	Gresen FSP212-1EDHN Replacement Element K-23018
8	Pressure Compensator Priority Flow Divider	Danfoss 2F96P12T12T25S
9	Pressure Gauge	3000psi Accutek PG-3000-Cg25
10	Directional Control Valve	Gresen V20-F4-F4-FC
11	Winches	Pullmaster PL5-12-167-1
12	Electronic Clutch	Ogura 12v 250lb clutch c/w 8630314 insert & 8690101 drive shaft

NOTE:

REFER TO OLYMPIC 360° STEERABLE Z-DRIVE
INSTALLATION INSTRUCTIONS OR ATTACHED
PICTURE FOR SCHEMATIC LAYOUT OF THRUSTER
HYDRAULIC POWER ASSIST & LUBE OIL SYSTEM

[illegible]

This drawing contains confidential proprietary information and may not be reproduced, nor used nor disclosed to others for any other purpose than for which it was issued without written permission from C&W Industrial.



EMI
INDUSTRIAL FABRICATION
AND MARINE EQUIPMENT LTD.

P.O. BOX 51
BAY BULLS, NF CANADA, AOA 1C0
FAX # (709) 334-2124
PH # 1-800-563-3262
www.cwindfab.com

PROJECT: 30FT ALUMINIUM S.P. BARGE

DRAWING TITLE:

DRAWN: _____

CHECKED: _____

D:

DATE: SHEET:

SCALE:	PROJECT NO:
--------	-------------

PROJECT NO:

CAD FILE:

HYDRAULIC SCHEMATIC FOR WINCHES

ISSUE	REV	DATE	REVISIONS	DRAFT	CHKD

GENERAL NOTES:

2 1/2" Sch 40

41 3/4

43 1/4

1/2"x 2" AL F.B.
1/2"x 3" AL F.B.
3/8" Alum. Plate

3/8

SS. Grommet

Side View

Pin
Grease Hole
Grease Nipple

ø 3/4" S.S.

Sectional

Bow Ramp Fastening
Pin Detail
N.T.S.

S.S. Grommet
3 3/4
5 1/4
1/2" Alum. Plate
R2

Front View

66
64
1/2
Locking Lug
(on both sides)
1/2
PLATE OVERLAP
10
10
9 3/4
9 3/4
10
10
20 1/2
20 1/2

ø3/8" S.S. Rod

ø3/16" S.S. Threaded

ø3/8" S.S. Rod

ø3/16" Threaded
Set Hole
Ramp lug fits between
these two lugs.

Bow Ramp Lock
Detail

Lifting/ Lowering Lug
Rubber Seal
Bulwork
Bow Ramp

Mc-0021.jpg

Bulwork

Bow Ramp

Top View
Bow Ramp Retaining Angle
Structural Detail

3x3/8" FB
6x4x1/2" O.A.

Midship View
Bow Ramp Retaining Angle
Structural Detail



P.O. BOX 51
BAY BULLS, N.F. CANADA, AQA 1C0
FAX # (709) 333-2124
PH # 1-800-585-3262
www.cwindrad.com

INDUSTRIAL FABRICATION
AND MARINE EQUIPMENT LTD.

This drawing contains confidential proprietary
information and may not be reproduced, nor used
nor disclosed to others for any other purpose
than for which it was issued without written
permission from C&W Industrial.

REFERENCE DRAWINGS

PROJECT: 30FT ALUMINIUM S.P. BARGE

DRAWING TITLE: BOW RAMP DETAIL DRAWING

DRAWN: DENNIS CRANE
CHECKED: DAVID BATES

DATE: 09/20/01
SHEET: 1 OF 1

SCALE: -
PROJECT NO: 15953

CAD FILE: J:/BOATS/PROJECTS/CCG-BARGE/15953-12

ISSUE	REV	DATE	REVISIONS	DRAWN	CHECKD

GENERAL NOTES:

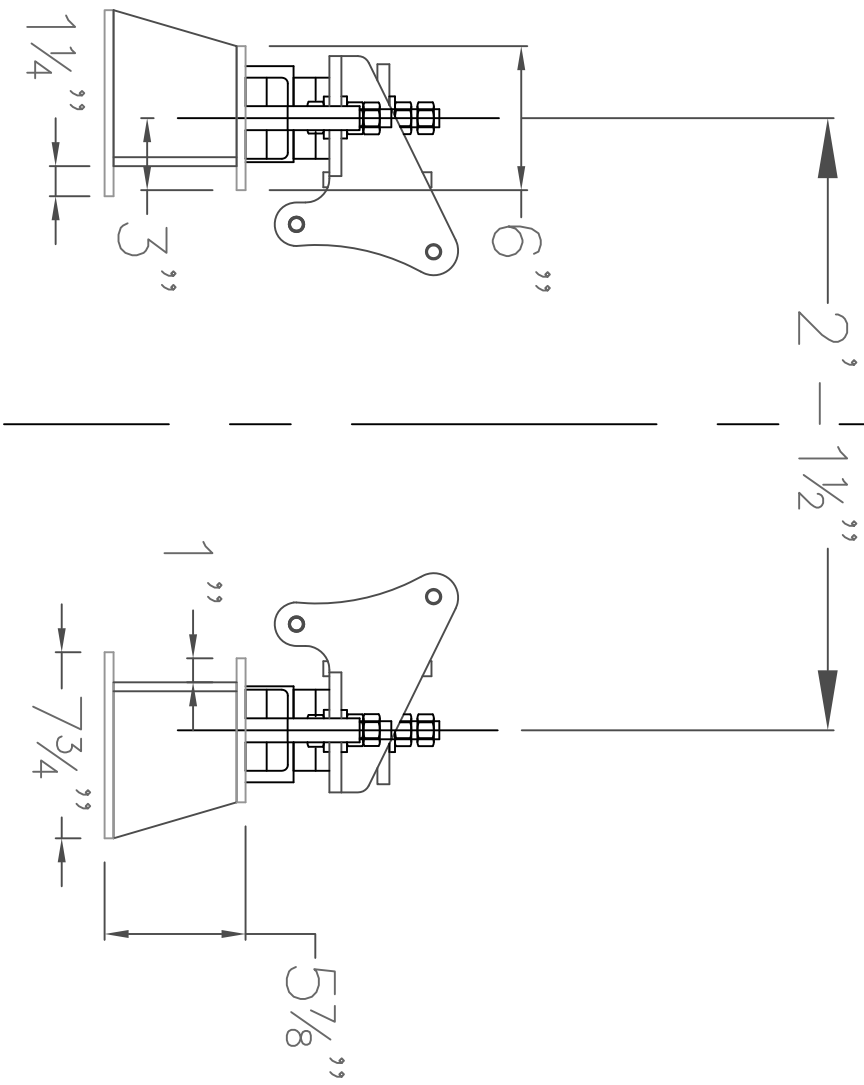
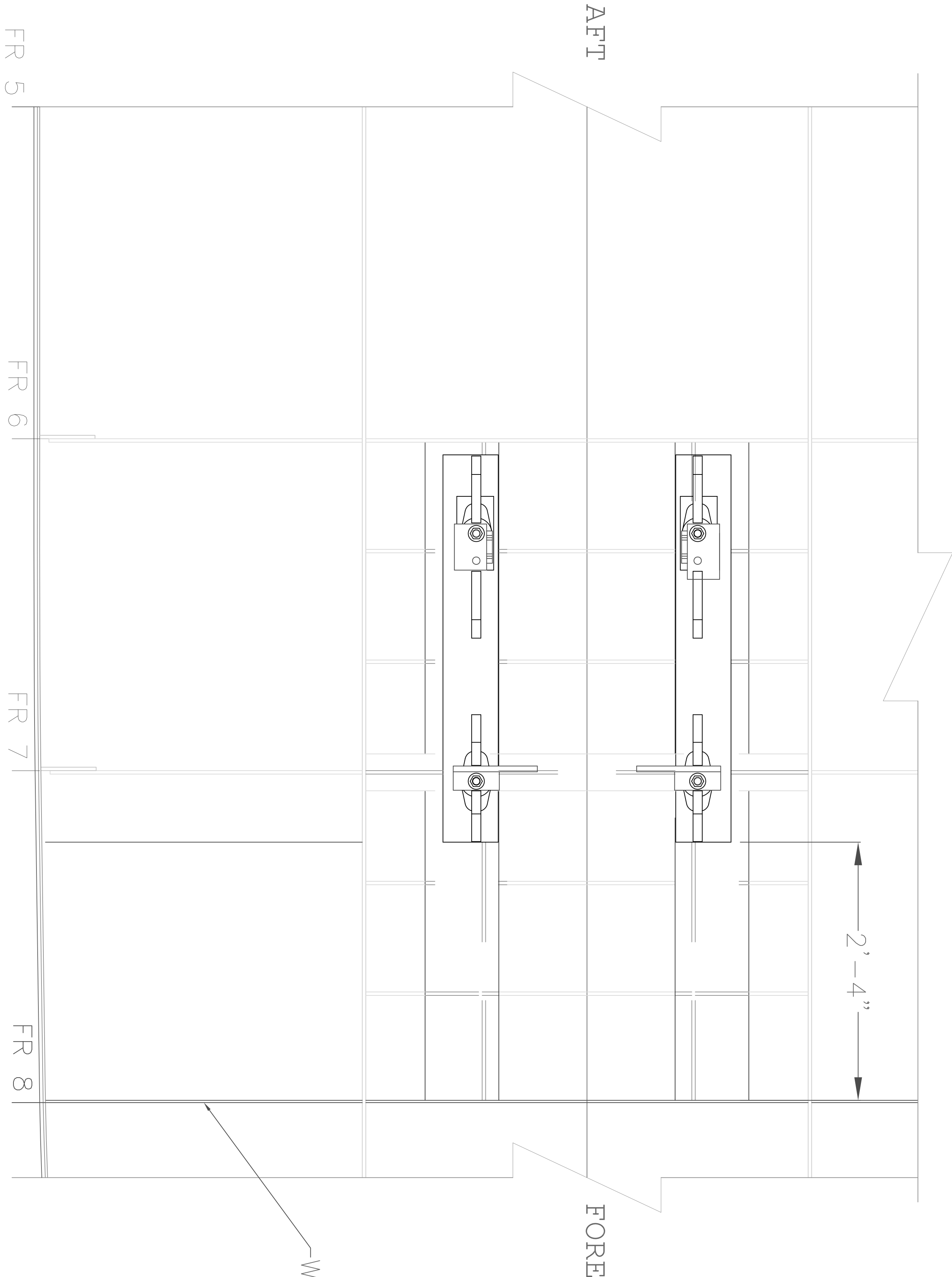
REFERENCE DRAWINGS	

This drawing contains confidential proprietary information and may not be reproduced, nor used nor disclosed to others for any other purpose than for which it was issued without written permission from C&W Industrial.



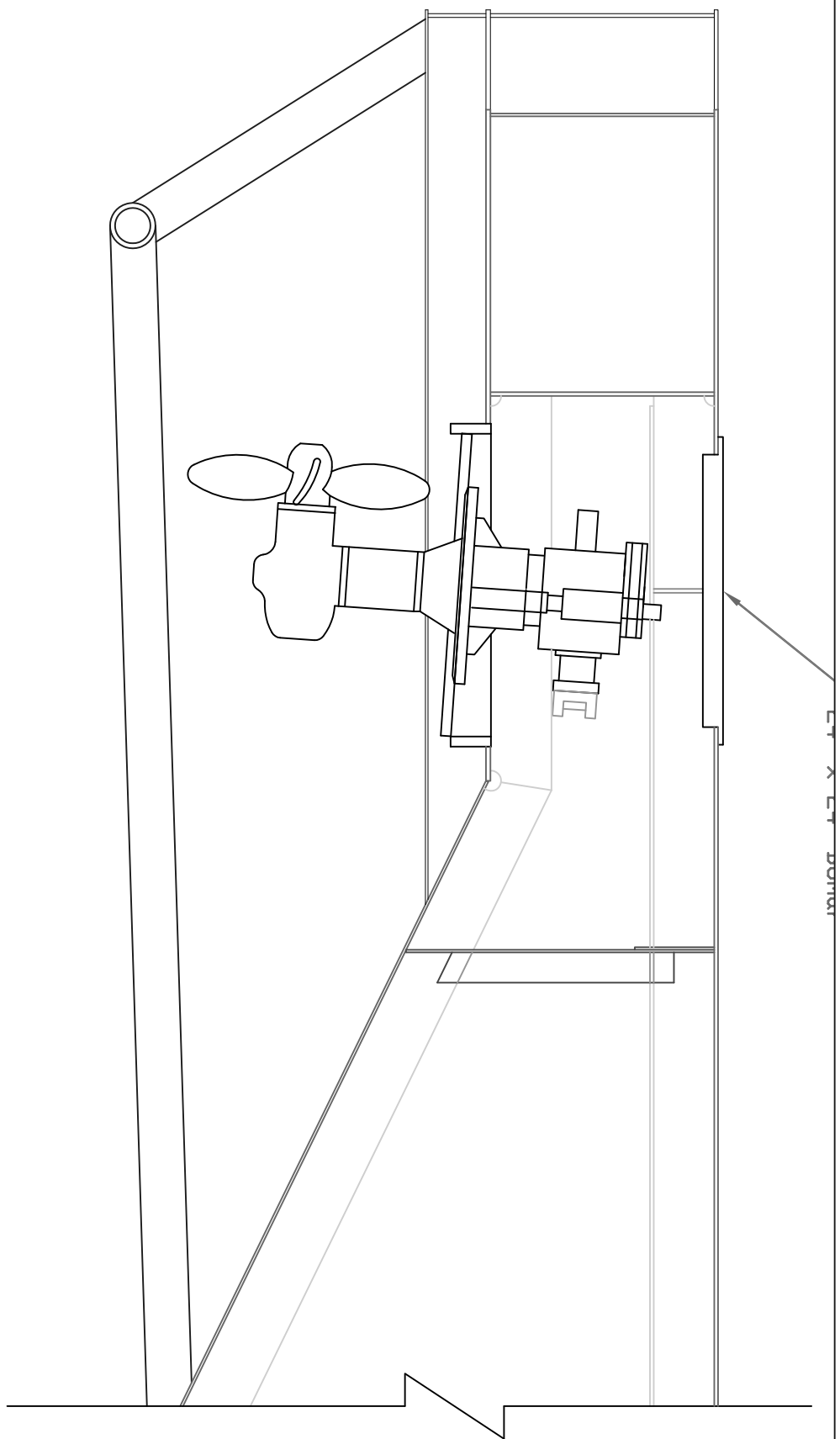
P.O. BOX 51
BAY BULLS, N.F. CANADA, A0A 1C0
FAX # (709) 334-2124
PH # 1-800-565-3262
www.cwindrad.com

PROJECT: 30FT ALUMINIUM S.P. BARGE	
DRAWING TITLE: ENGINE SEATING ARRANGEMENT	
DRAWN: DENNIS CRANE	CHECKED: DAVID BATES
DATE: 09/20/01	SHEET: 1 OF 1
SCALE: 1 1/2"=1'-0"	PROJECT NO: 15953
CAD FILE: j:\BOATS\PROJECTS\CCG-BARGE\15953-13	



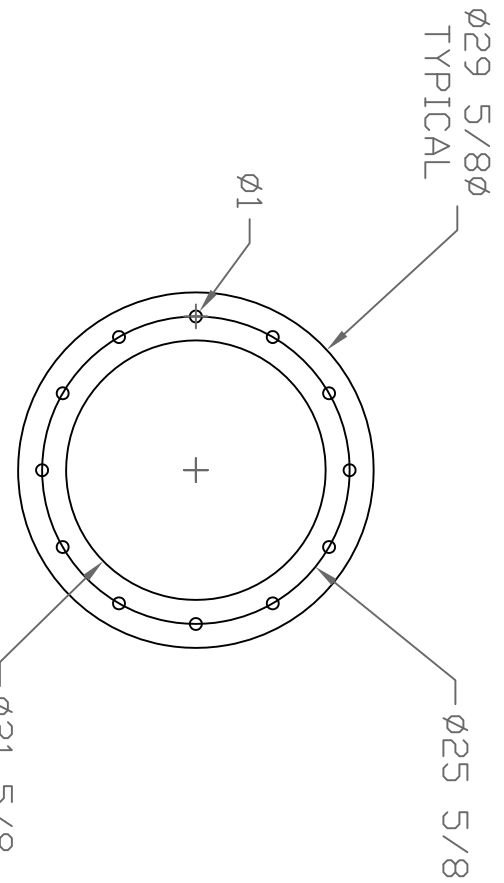
Center of Barge
& Engine

W.T. Bulkhead



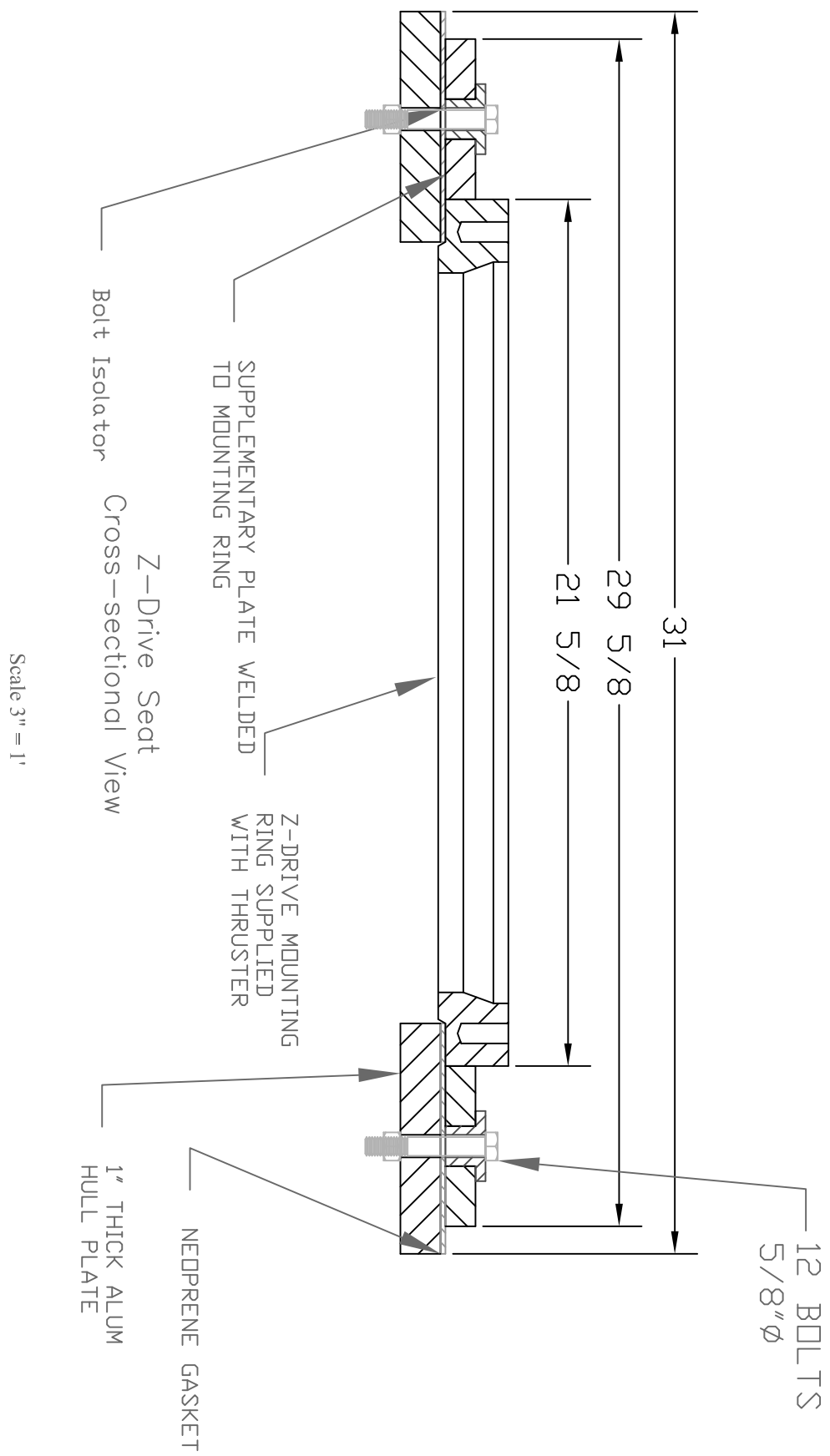
Z-Drive Location
View at Centre-Line

Scale 3/4" = 1'

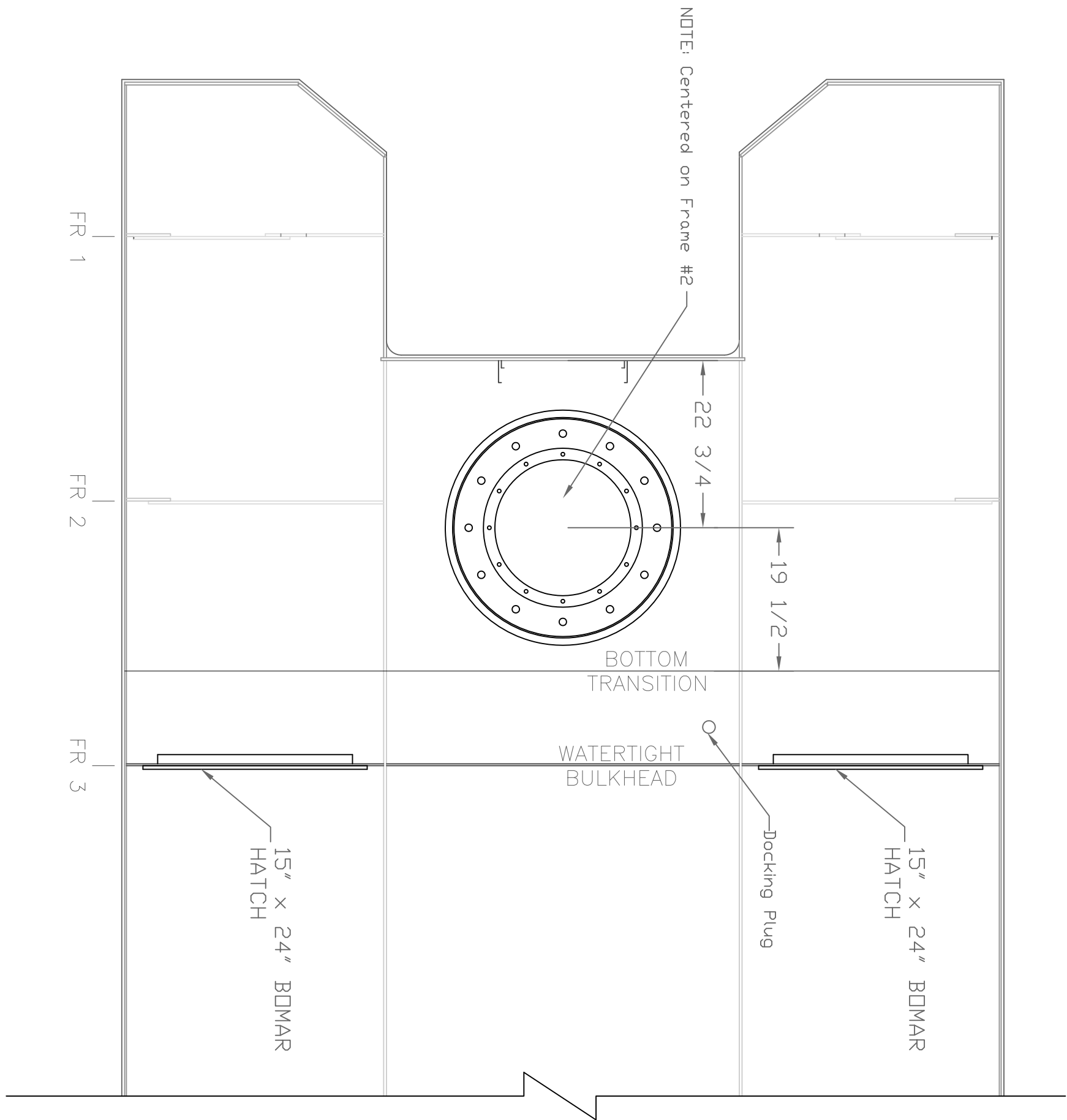


Z-Drive Seat
Supplementary 1" Plate
Detail

Scale 3/4" = 1'

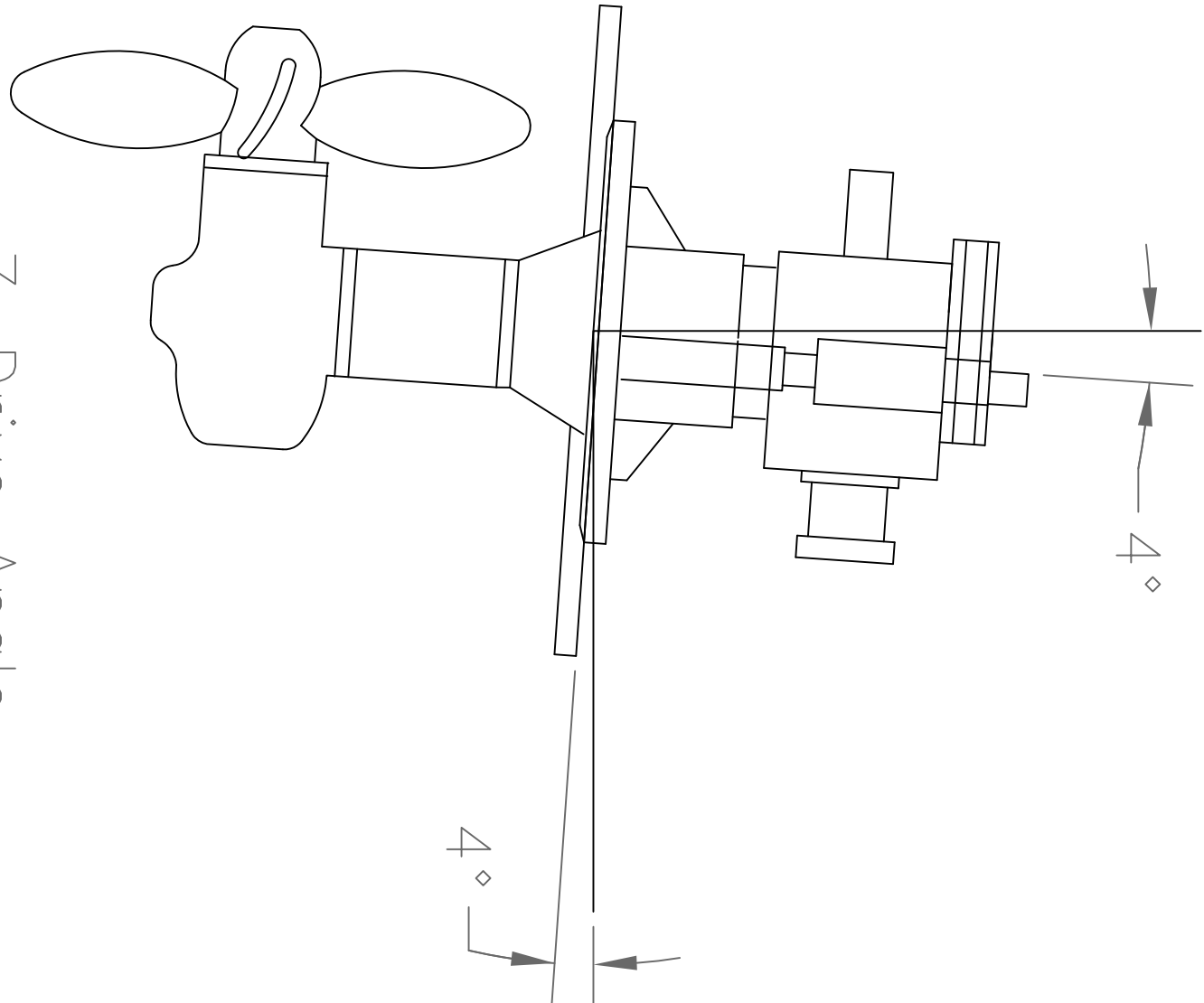


Scale 3" = 1'



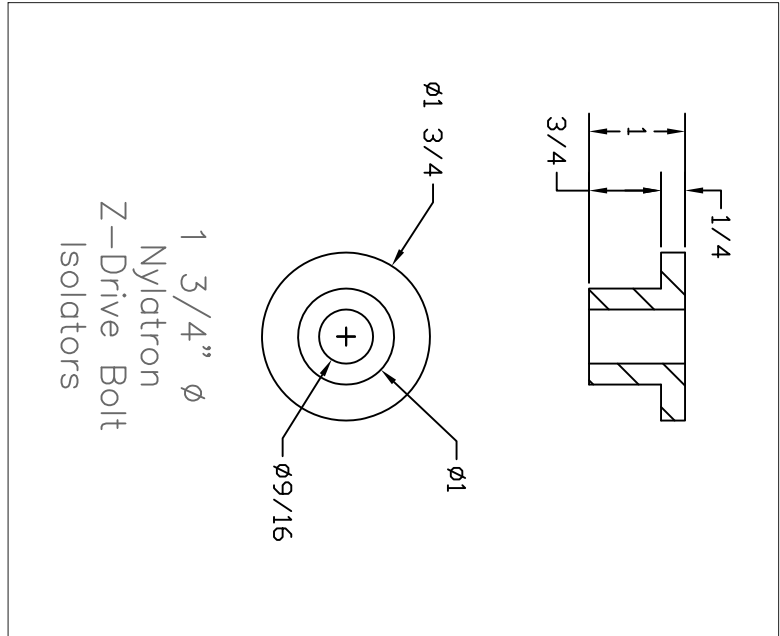
Z-Drive Location
View at Centre-Line

Scale 3/4" = 1'



Z-Drive Angle
Detail Side View

Scale 1'-0" = 1'-0"



ISSUE	REV	DATE	REVISIONS	DRAFT	CHKD

GENERAL NOTES:

REFERENCE DRAWINGS	

This drawing contains confidential proprietary information and may not be reproduced, nor used nor disclosed to others for any other purpose than for which it was issued without written permission from C&W Industrial.

C&W INDUSTRIAL FABRICATION
AND MARINE EQUIPMENT LTD.

P.O. BOX 51
BAY BULLS, N.F. CANADA, A0A 1C0
FAX # (709) 334-2124
PH # 1-800-565-3262
www.cwindrad.com

PROJECT: 30FT ALUMINIUM S.P. BARGE	
DRAWING TITLE: Z-DRAVE THRUSTER MOUNTING DRAWING	
DRAWN: DENNIS CRANE	CHECKED: DAVID BATES
DATE: 09/20/01	SHEET: 1 OF 1
SCALE: 3/4"=1'-0"	PROJECT NO: 15953

CAD FILE: J:\BOATS\PROJECTS\CCG-BARGE\15953-14