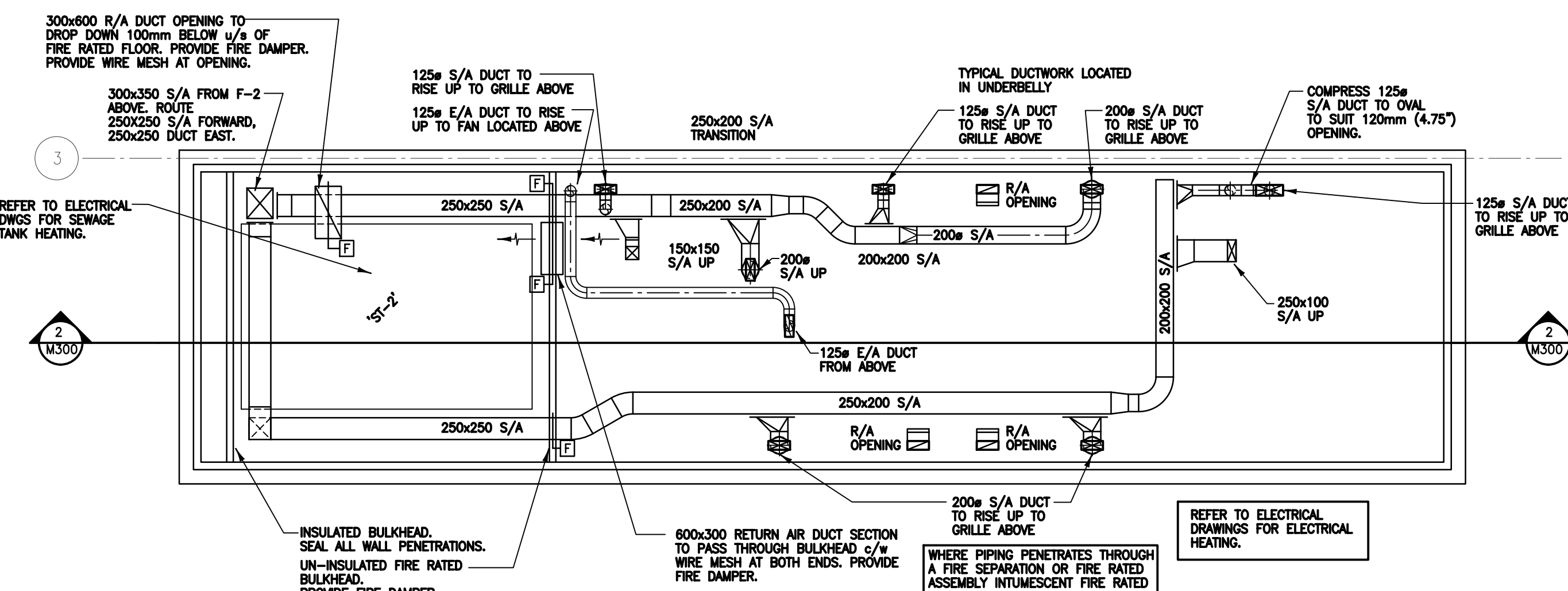
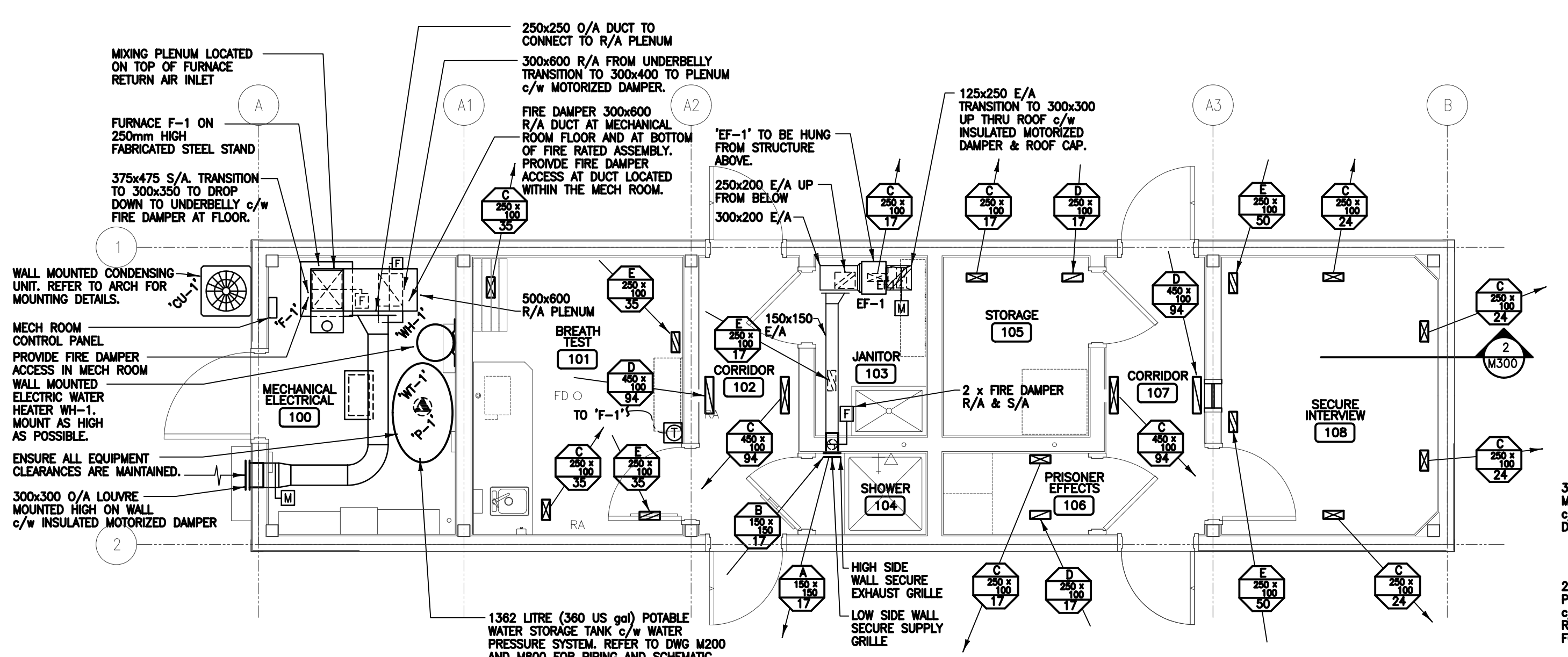


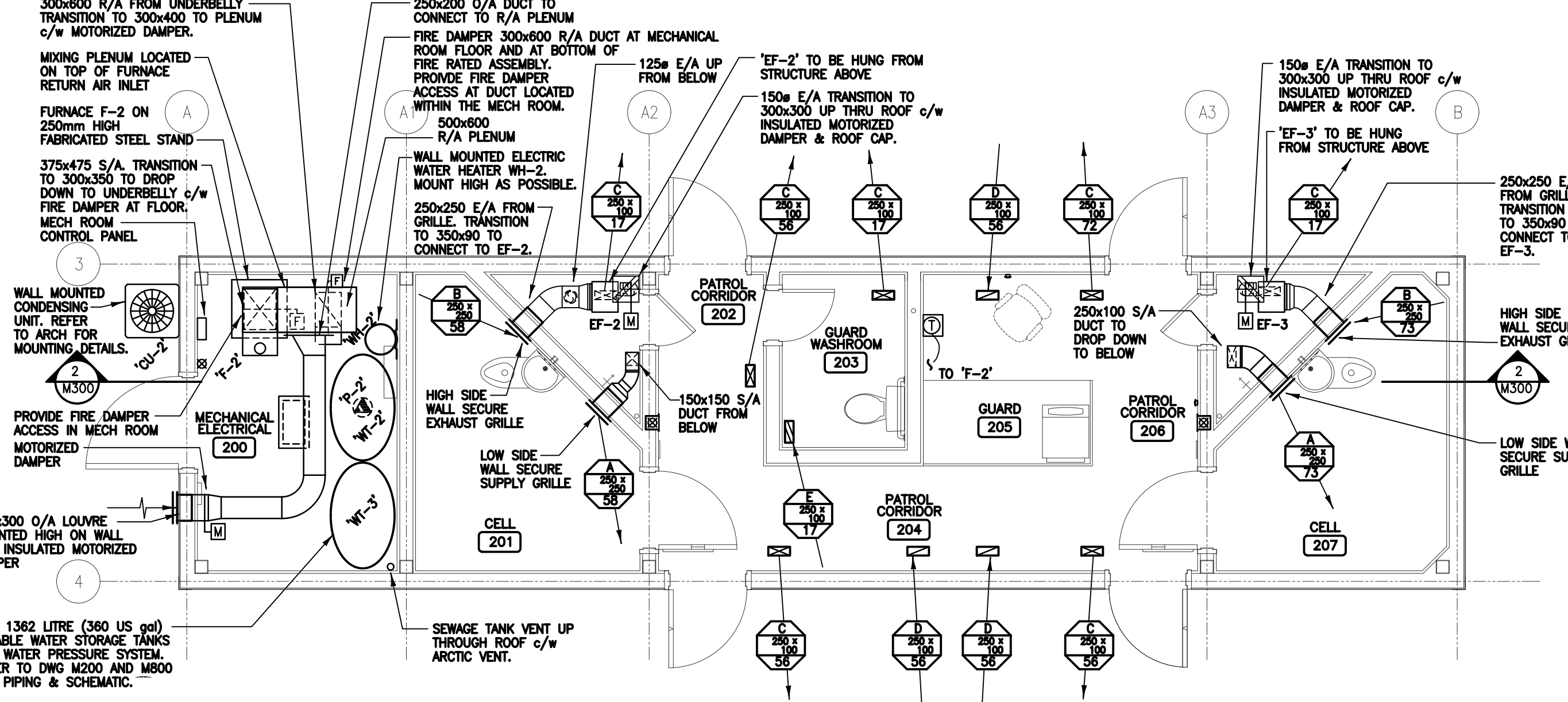
1 MASTER UNIT: UNDERBELLY HVAC
1:50



3 BASE UNIT: UNDERBELLY HVAC
1:50



2 MASTER UNIT: MAIN FLOOR HVAC
1:50



4 BASE UNIT: MAIN FLOOR HVAC
1:50

CONSTRUCTION NORTH MAY DIFFER FROM THAT OF TRUE NORTH. REFER TO SITE PLANS FOR CONFIGURATIONS AND ORIENTATION OF MODULES.

1 2011/11/14 ISSUED FOR CONSTRUCTION
0 2011/08/05 ISSUED FOR TENDER

SEALS:

Association of Professional Engineers & Geoscientists of Saskatchewan
CERTIFICATE OF AUTHORIZATION
GENIVAR Inc.
Number: C0688
Particulars in Control held by:
B.K. Dent
P.R. M. Day
MECHANICAL 9159

CLIENT: Government of Canada

Canada

CONSULTANTS: GENIVAR

210 - 15 INNOVATION BOULEVARD
SASKATOON, SASKATCHEWAN, CANADA S7N 2X8
TELEPHONE: (306) 665-6223
FAX: (306) 665-8589

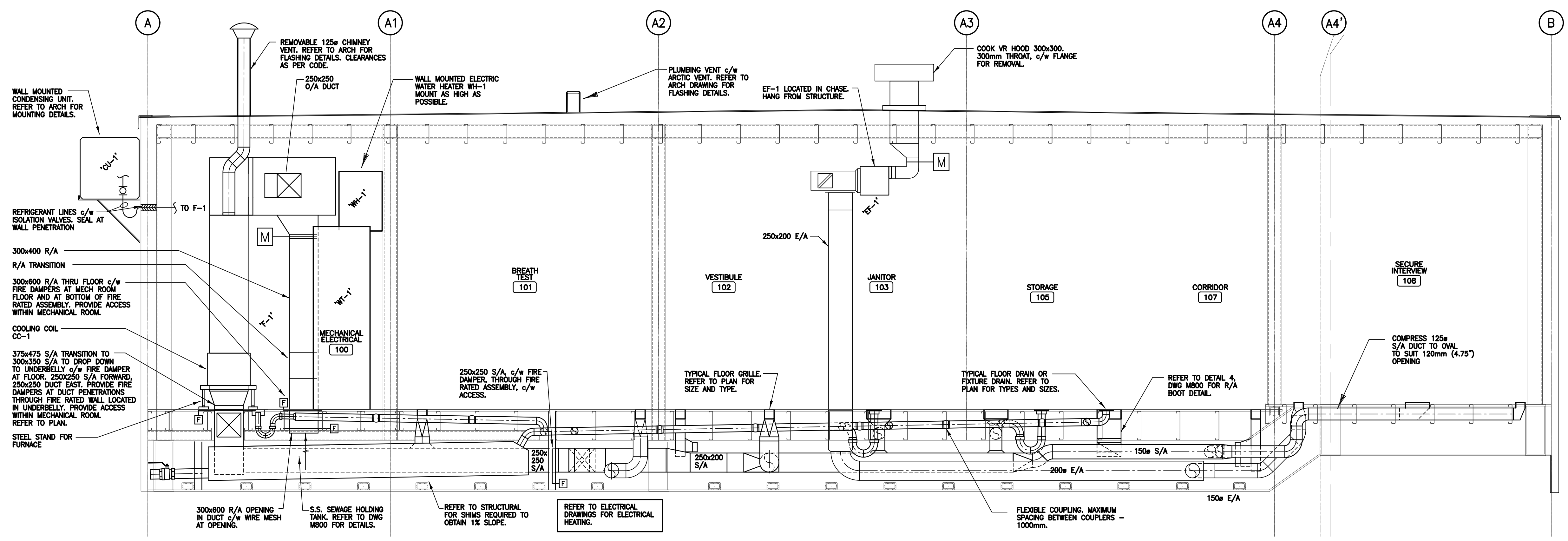
RBM architecture

2205 Sports Avenue email: office@rbmarchitectures.com * 704, 1101-101 Street
Saskatoon, SK S4N 0A6 Saskatoon, SK S4N 0A6
ph: 306.242.2536 fax: 306.242.9130 ph: 306.441.4208

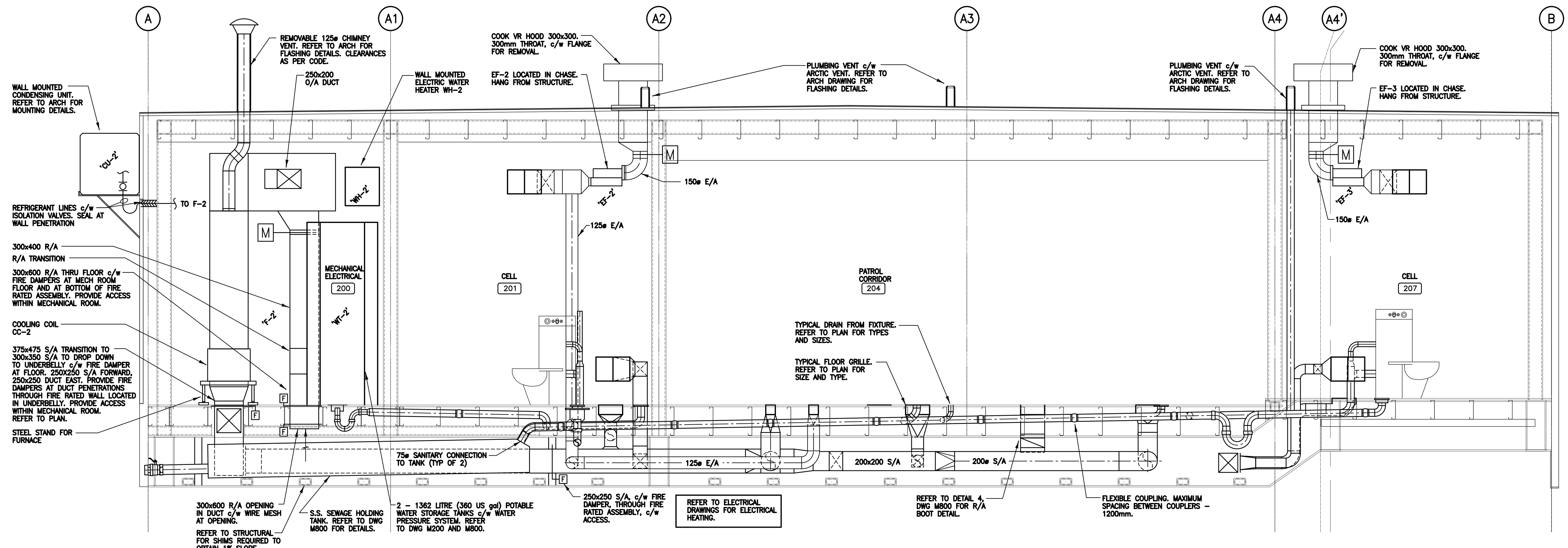
PROJECT: POLICE TRANSPORTABLE HOLDING CELLS

DRAWING: FLOOR PLANS HVAC

| | |
|--------------------|----------------------|
| PROJECT No: 510-10 | SHEET No: PLOT No: 1 |
| DATE: 2011/08/05 | M201 |
| DRAWN BY: SJS | |
| SCALE: AS NOTED | |



1 MASTER UNIT - SECTION
1/25



2 BASE UNIT - SECTION
1/25

1 2011/11/14 ISSUED FOR CONSTRUCTION
0 2011/08/05 ISSUED FOR TENDER

SEALS:

PROFESSIONAL ENGINEER
BEN DENT
MEMBER 9159
SASKATCHEWAN

Association of Professional Engineers & Geoscientists of Saskatchewan
CERTIFICATE OF AUTHORIZATION
GENIVAR Inc.
Number C0808
Permitted to Contract held by:
Discipline: MECHANICAL 9159

CLIENT: Government of Canada

Canada

CONSULTANTS:

210 - 15 INNOVATION BOULEVARD
SASKATOON, SASKATCHEWAN, CANADA S7N 2X8
TELEPHONE: (306) 665-8223
FAX: (306) 665-8589

2205 Spens Avenue Saskatoon, SK S0N 0S6
email: office@rbmarchitects.ca ph: 306.242.2536
704, 1101-101 Street North, Saskatoon, SK S0N 0S6
ph: 306.441.4208

PROJECT: POLICE TRANSPORTABLE HOLDING CELLS

DRAWING: MECHANICAL SECTIONS

| | |
|--------------------|--------------------|
| PROJECT No: 510-10 | SHEET No: PLOT No: |
| DATE: 2011/08/05 | <h1>M300</h1> |
| DRAWN BY: SJS | |
| SCALE: AS NOTED | |

| GRILLES, DIFFUSERS & LOUVRES | |
|------------------------------|--|
| TYPE | DESCRIPTION |
| A | GUNNEBO MAXIMUM SECURITY SUPPLY AIR DIFFUSER MODEL OP20V LOUVERED FACE DIFFUSER, LATTICE FACE PLATE, c/w TAMPER-PROOF BOLTS. |
| B | GUNNEBO MAXIMUM SECURITY EXHAUST AIR DIFFUSER MODEL OP20V LOUVERED FACE DIFFUSER, LATTICE FACE PLATE, c/w TAMPER-PROOF BOLTS. |
| C | E.H. PRICE MODEL LBPH 158/125/VCS3/C/B12 LINEAR BAR SUPPLY AIR GRILLE FOR RECESSED FLOOR MOUNTING c/w CORE CLIPS AND VOLUME CONTROL DAMPER. |
| D | E.H. PRICE MODEL LBPH 158/125/VCS3/C/B12 LINEAR BAR RETURN AIR GRILLE FOR RECESSED FLOOR MOUNTING c/w CORE CLIPS AND VOLUME CONTROL DAMPER. |
| E | E.H. PRICE MODEL LBPH 158/125/VCS3/C/B12 LINEAR BAR EXHAUST AIR GRILLE FOR RECESSED FLOOR MOUNTING c/w CORE CLIPS AND VOLUME CONTROL DAMPER. |
| INTAKE LOUVRE | PRICE MODEL DES35 DRAMABLE 6" LOUVRE. ALL WELDED 12ga. EXTRUDED ALUMINUM WITH 14ga. BIRD SCREEN AND BAKED ENAMEL FINISH. COLOR BY ARCHITECT. |

| WATER STORAGE TANKS | | |
|---------------------|---------------------------|--|
| TAG | LOCATION | DESCRIPTION |
| WT-1 | BASE UNIT MECH ROOM 100 | WATER STORAGE TANK - 1362 LITRE (360 US gal), MOLDED PLASTIC MODEL CMP 80014-1. TANK TO BE OVAL VERTICAL TYPE TANK, 29"(W) x 48"(L) x 75"(H), c/w VENTED 8" LID, BULKHEAD FITTINGS AS SHOWN ON DETAIL 1. |
| WT-2 | MASTER UNIT MECH ROOM 200 | WATER STORAGE TANK - 1362 LITRE (360 US gal), MOLDED PLASTIC MODEL CMP 80014-1. TANK TO BE OVAL VERTICAL TYPE TANK, 29"(W) x 48"(L) x 75"(H), c/w VENTED 8" LID, BULKHEAD FITTINGS AS SHOWN ON DETAIL 2. |
| WT-3 | MASTER UNIT MECH ROOM 200 | WATER STORAGE TANK - 1362 LITRE (360 US gal), MOLDED PLASTIC MODEL CMP 80014-1. TANK TO BE OVAL VERTICAL TYPE TANK, 29"(W) x 48"(L) x 75"(H), c/w VENTED 8" LID, BULKHEAD FITTINGS AS SHOWN ON DETAIL 2. |

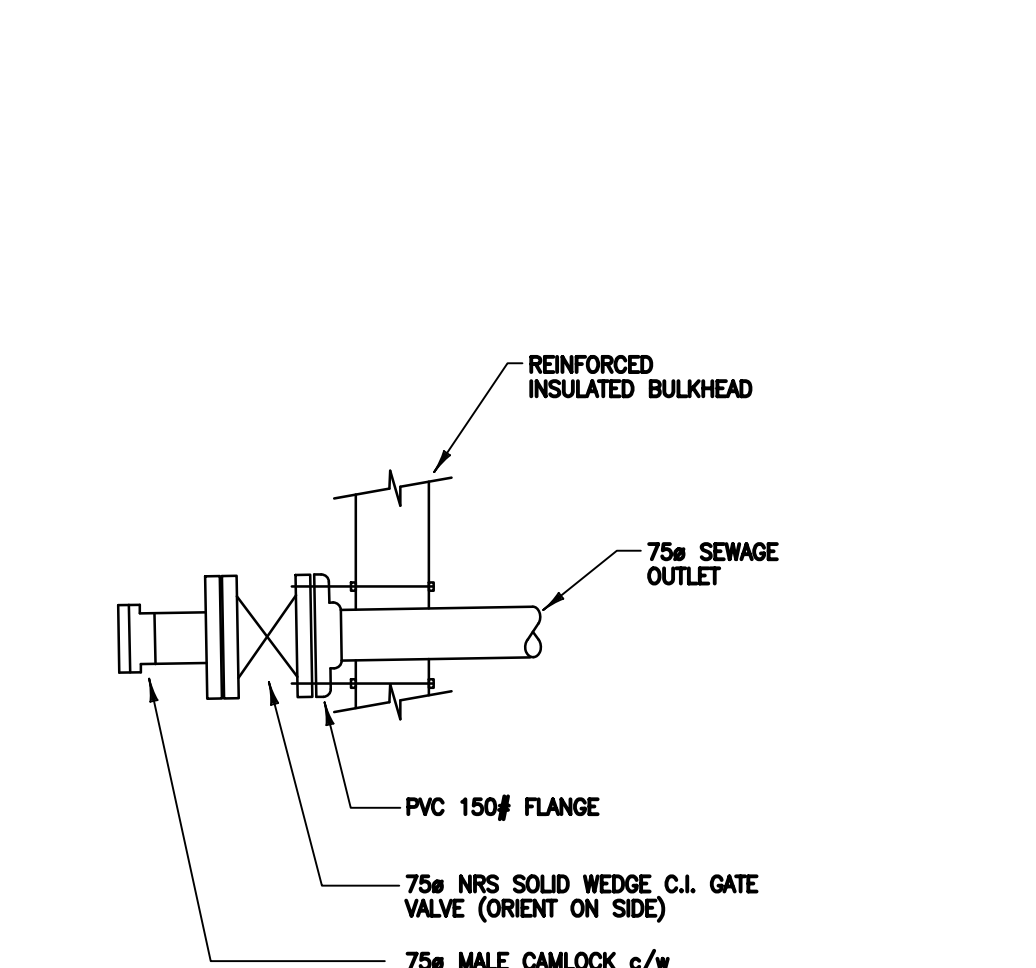
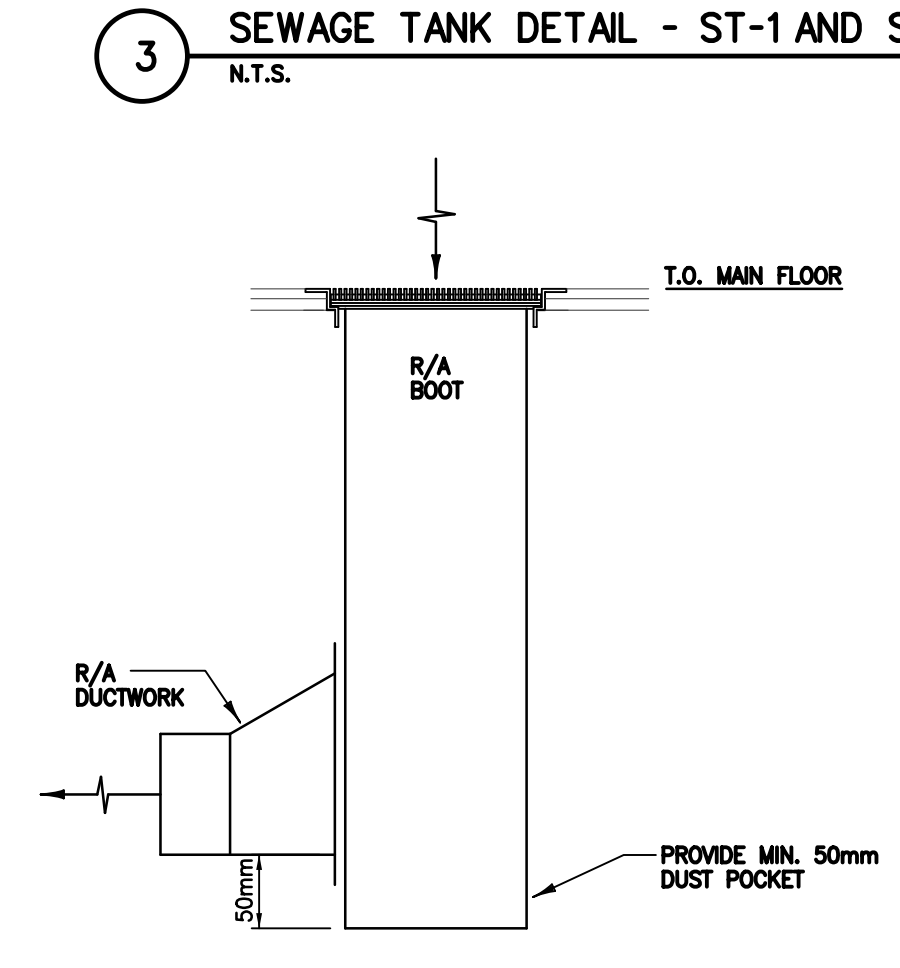
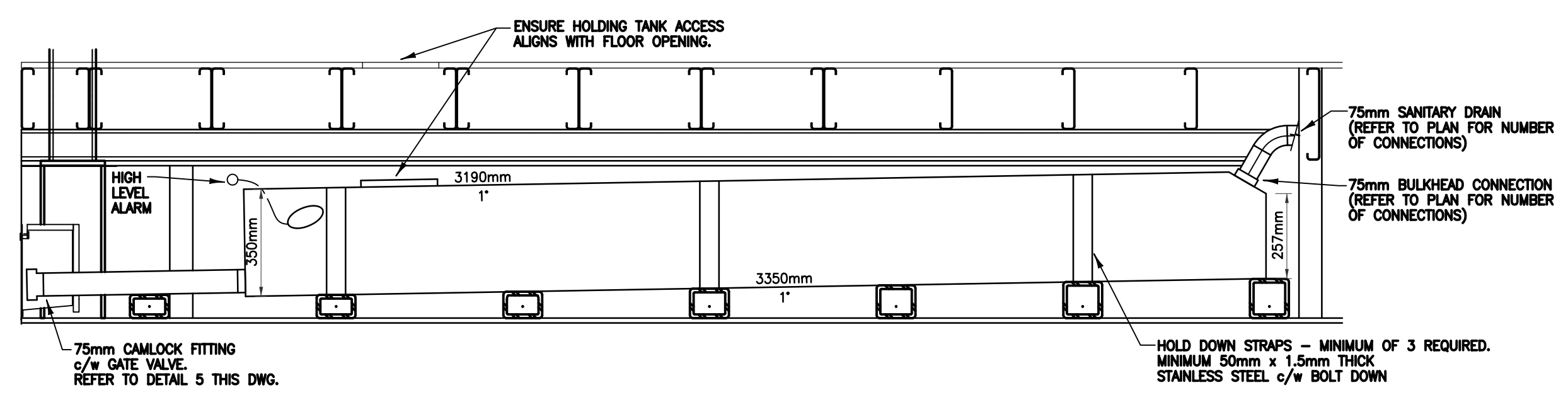
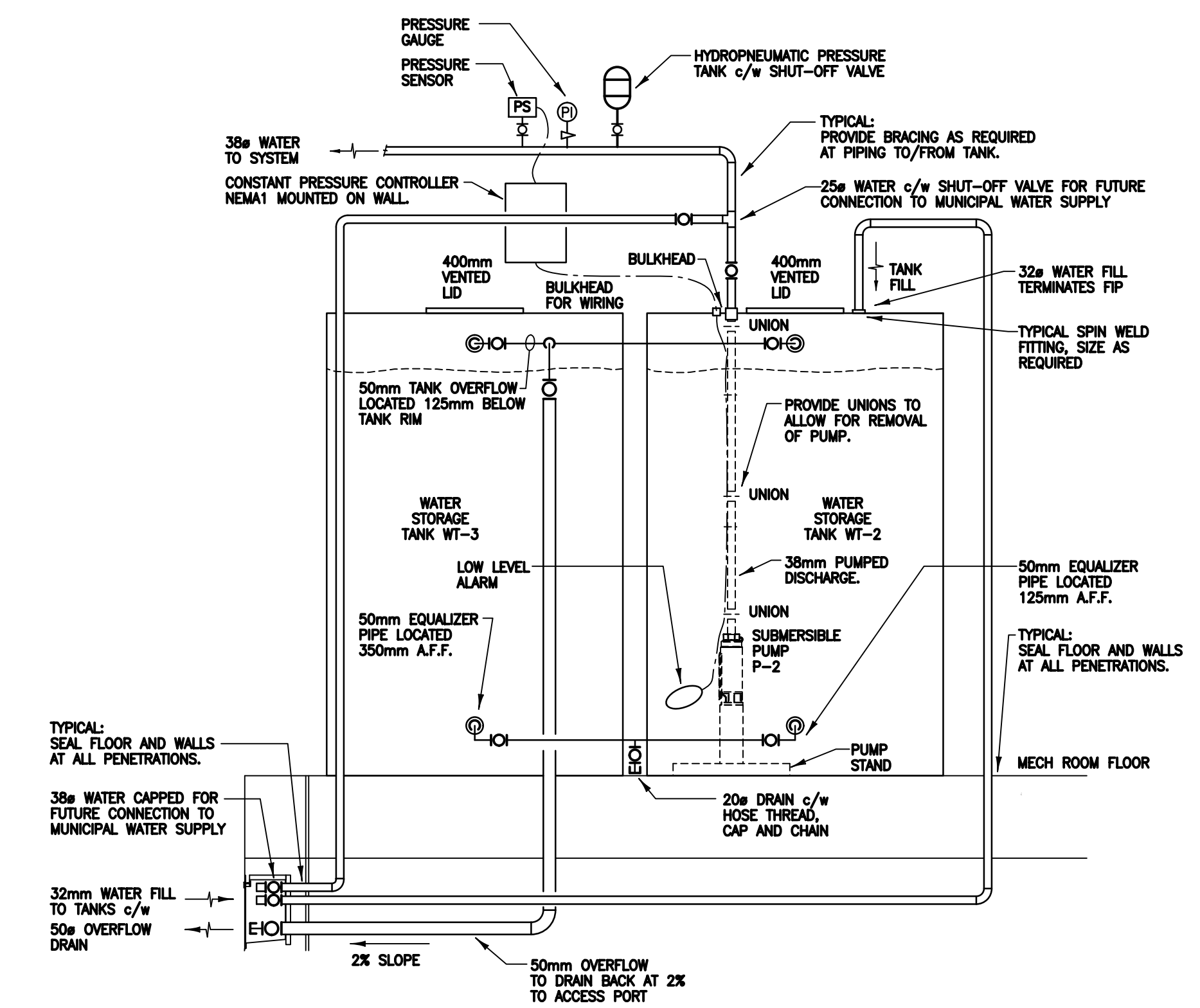
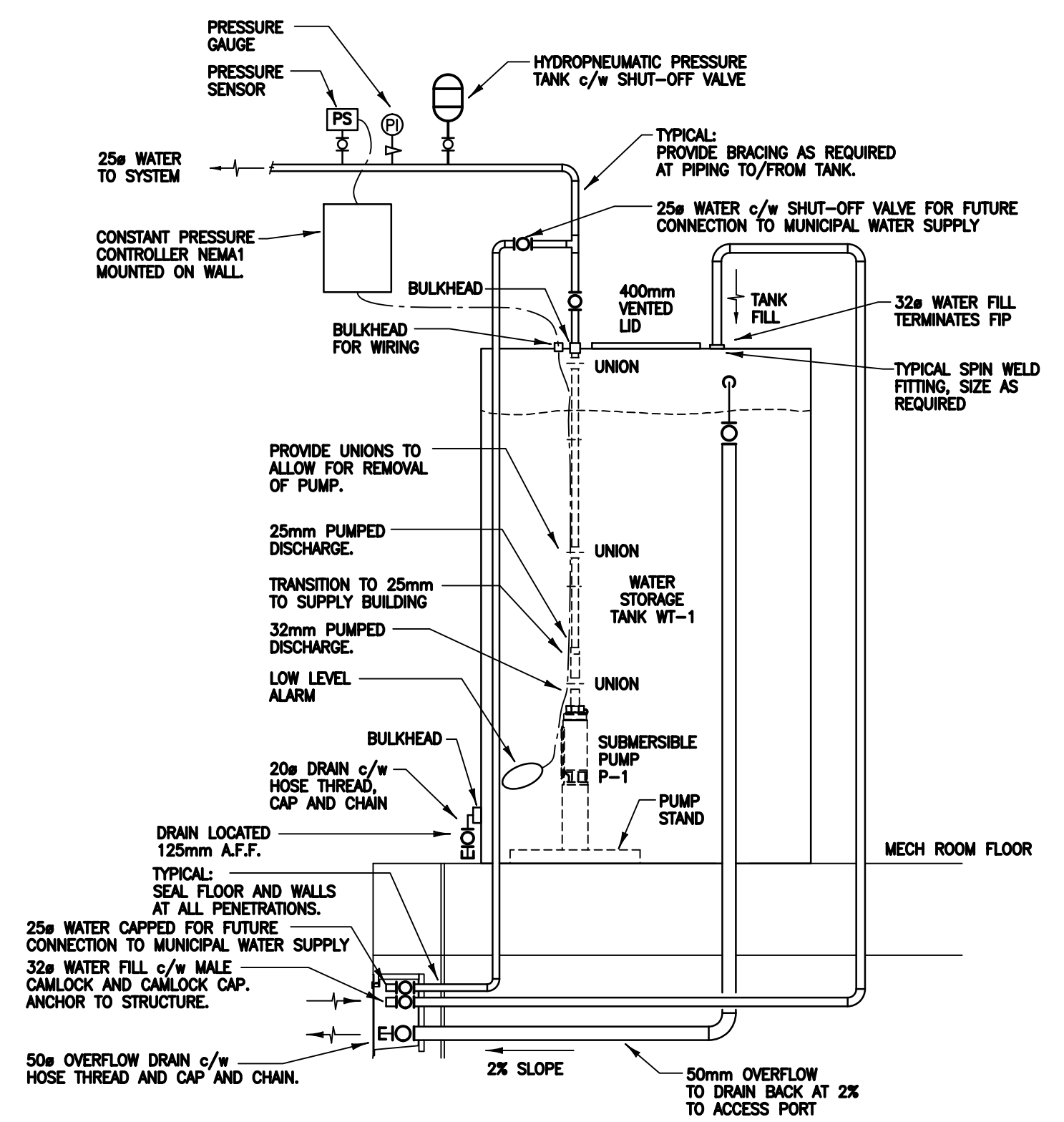
| SEWAGE STORAGE TANKS | | |
|----------------------|------------------------|--|
| TAG | LOCATION | DESCRIPTION |
| ST-1 | BASE UNIT UNDERBELLY | SEWAGE STORAGE TANK, 16 GAUGE, TYPE 316 STAINLESS STEEL. ALL SEAMS AND CORNERS SHALL BE WELDED LIQUID TIGHT. UNIT c/w TOP MOUNTED ACCESS LID c/w GASKET AND S.S. FASTENERS, ONE 75mm BULKHEAD CONNECTION, VENT AND 100mm CAPPED DISCHARGE OUTLET. PROVIDE REINFORCEMENT AS REQUIRED TO SUPPORT LIQUID LEVEL. PREPARE SHOP DRAWING FOR APPROVAL PRIOR TO FABRICATION. DIMENSIONS TO BE: 3350mm (L) x 2133mm (W) x 350mm (H). Volume: 2250 litres AT 90% CAPACITY. |
| ST-2 | MASTER UNIT UNDERBELLY | SEWAGE STORAGE TANK, 16 GAUGE, TYPE 316 STAINLESS STEEL. ALL SEAMS AND CORNERS SHALL BE WELDED LIQUID TIGHT. UNIT c/w TOP MOUNTED ACCESS LID c/w GASKET AND S.S. FASTENERS, ONE 75mm BULKHEAD CONNECTION, VENT AND 100mm CAPPED DISCHARGE OUTLET. PROVIDE REINFORCEMENT AS REQUIRED TO SUPPORT LIQUID LEVEL. PREPARE SHOP DRAWING FOR APPROVAL PRIOR TO FABRICATION. DIMENSIONS TO BE: 3350mm (L) x 2133mm (W) x 350mm (H). Volume: 2250 litres AT 90% CAPACITY. |

| FAN SCHEDULE | | | | | | | |
|--------------|----------------------------|--------|--------|---------------|------------|--------------------|--|
| UNIT No. | SERVICE | MANUF. | MODEL | FLOW RATE L/s | E.S.P. Pa. | ELECTRICAL HP/V/Ph | NOTES |
| 'EF-1' | MASTER UNIT EXHAUST | COOK | GN-720 | 180 | 0.50 | 0.25/120/1 | - INTERLOCK WITH F-1 - c/w ROOF DISCHARGE CAP |
| 'EF-2' | BASE UNIT CELL 201 W/R 203 | COOK | GN-164 | 66 | 0.50 | FH/120/1 | - INTERLOCK WITH F-2 - c/w ROOF DISCHARGE CAP |
| 'EF-3' | BASE UNIT CELL 207 | COOK | GN-164 | 66 | 0.25 | FH/120/1 | - INTERLOCK WITH F-2 - c/w ROOF DISCHARGE CAP |

| ELECTRIC WATER HEATER SCHEDULE | | | | | | |
|--------------------------------|-------------|--------------------|-----------------|-----------------------------|----------------------------|---|
| TAG | LOCATION | SERVICE | TANK CAP LITERS | RECOVERY (L/hr @ 55°C T.R.) | MANUF./MODEL | NOTES |
| WH-1 | MASTER UNIT | DOMESTIC HOT WATER | 72 | 45 | BRADFORD WHITE LD-WH20L3-1 | - 3000W ELEMENT - c/w FACTORY INSTALLED HEAVY DUTY WALL MOUNTING BRACKET - PROVIDE ADDITIONAL STAPPING TO ANCHOR UNIT TO WALL |
| WH-2 | BASE UNIT | DOMESTIC HOT WATER | 23 | 23 | BRADFORD WHITE LD-WH6U3-1 | - 1500W ELEMENT - c/w FACTORY INSTALLED HEAVY DUTY WALL MOUNTING BRACKET - PROVIDE ADDITIONAL STAPPING TO ANCHOR UNIT TO WALL |

| PUMP SCHEDULE | | | | | | | | | | | |
|---------------|--------------------------------|-----------------------|--------------|--------------------------|---------------|---------------|------------|-----------|--------------------|---|----------------|
| UNIT No. | LOCATION | SERVICE | MANUFACTURER | MODEL/SIZE | FLUID | FLOW RATE l/s | T.D.H. lpa | SPEED RPM | ELECTRICAL kW/V/Ph | REMARKS | CONTROL |
| P-1 | MASTER UNIT MECH/ELEC ROOM 100 | WATER PRESSURE SYSTEM | GOULDS PUMPS | 10GS05-411 (SUBMERSIBLE) | POTABLE WATER | 0.631 | 75 | 3450 | .37/120/1 | UNIT c/w POLYPROPYLENE LINED DIAPHRAGM TANK MODEL TP6P, 2.0 GAL VOLUME, CONSTANT PRESSURE CONTROLLER MONODRIVE NEMA1, MODEL 587 020 3110, 5.7 A 1/2 hp. UNIT c/w IN TANK PUMP MOUNTING BRACKET AW39T. SUPPLY FLOAT AND ALARM FOR LOW LEVEL. | SELF-CONTAINED |
| P-2 | BASE UNIT MECH/ELEC ROOM 200 | WATER PRESSURE SYSTEM | GOULDS PUMPS | 10GS05-411 (SUBMERSIBLE) | POTABLE WATER | 0.631 | 75 | 3450 | .37/120/1 | UNIT c/w POLYPROPYLENE LINED DIAPHRAGM TANK MODEL TP6P, 2.0 GAL VOLUME, CONSTANT PRESSURE CONTROLLER MONODRIVE NEMA1, MODEL 587 020 3110, 5.7 A 1/2 hp. UNIT c/w IN TANK PUMP MOUNTING BRACKET AW39T. SUPPLY FLOAT AND ALARM FOR LOW LEVEL. | SELF-CONTAINED |

| FURNACE SCHEDULE | | | | | | | | | | | | | | | |
|------------------|-------------|--------------------------|-------------|-------------|--------------|--------------------|-----------------|----------------|----------------------|------|----------------------|-------|-----|-----------------------|--|
| TAG | SERVICE | MANUF./MODEL No. | FUEL | HEATING | | BLOWER PERFORMANCE | | | COOLING | | | NOTES | | | |
| | | | | INPUT Btu/h | OUTPUT Btu/h | HP/V/Ph | FLOW RATE (cfm) | ESP (in. W.C.) | EWAP. COIL MODEL No. | TAG | COND. UNIT MODEL No. | | TAG | COOLING CAPACITY TONS | ELECTRICAL V/Ph |
| F-1 | MASTER UNIT | ENGINEERED AIR XE-130-CF | NATURAL GAS | 115,200 | 92,160 | 0.50/120/1 | 900 | 1.0 | LENNOX CR33-24A-F | CC-1 | LENNOX 13ACX-24 | CU-1 | 2 | 208/1 | - ELECTRICAL CONNECTION TO BE MOUNTED ON LEFT SIDE - COUNTERFLO MODEL WITH INLET/MIX BOX - MODULATING GAS INPUT/DISCHARGE AIR TEMPERATURE CONTROLLED - c/w PROPANE CONVERSION KIT |
| F-2 | BASE UNIT | ENGINEERED AIR XE-130-CF | NATURAL GAS | 115,200 | 92,160 | 0.50/120/1 | 900 | 1.0 | LENNOX CR33-24A-F | CC-2 | LENNOX 13ACX-24 | CU-1 | 2 | 208/1 | |



1 2011/11/14 ISSUED FOR CONSTRUCTION
0 2011/08/05 ISSUED FOR TENDER

SEALS:

Association of Professional Engineers & Geoscientists of Saskatchewan
CERTIFICATE OF AUTHORIZATION
GENIVAR Inc.
Number: CO888
Mechanical: 9159

CLIENT: Government of Canada

Canada

CONSULTANTS:

210 - 15 INNOVATION BOULEVARD
SASKATOON, SASKATCHEWAN, CANADA S7N 2X8
TELEPHONE: (306) 665-8223
FAX: (306) 665-8589

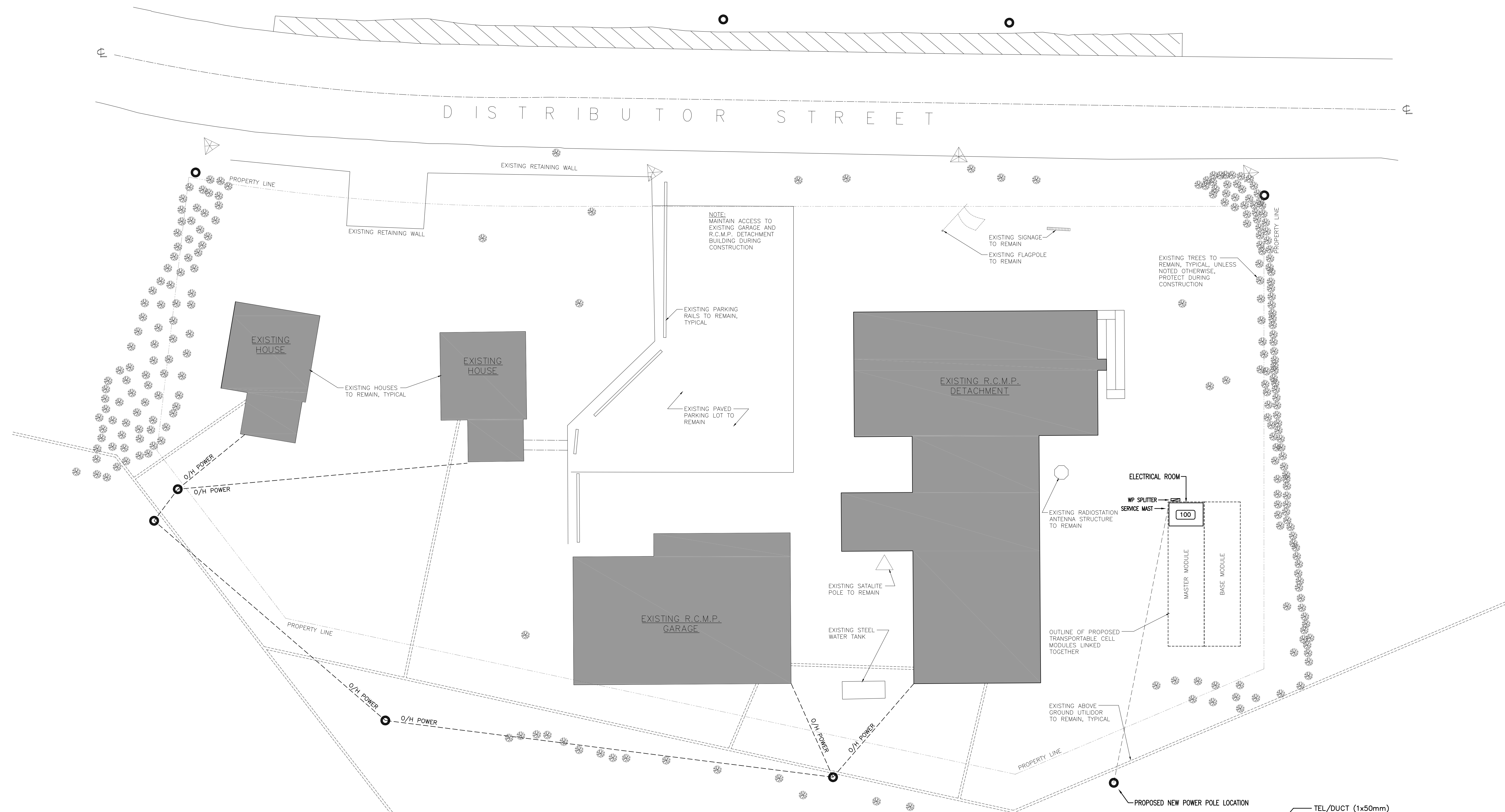
2205 Speers Avenue Saskatoon, SK S7N 2E2
2205 Speers Avenue North Battleford, SK S1A 4K1
tel: 306.242.2535 email: office@rbm-architectural.com fax: 306.242.9130

PROJECT: **POLICE TRANSPORTABLE HOLDING CELLS**

DRAWING: **DETAILS SCHEDULES**

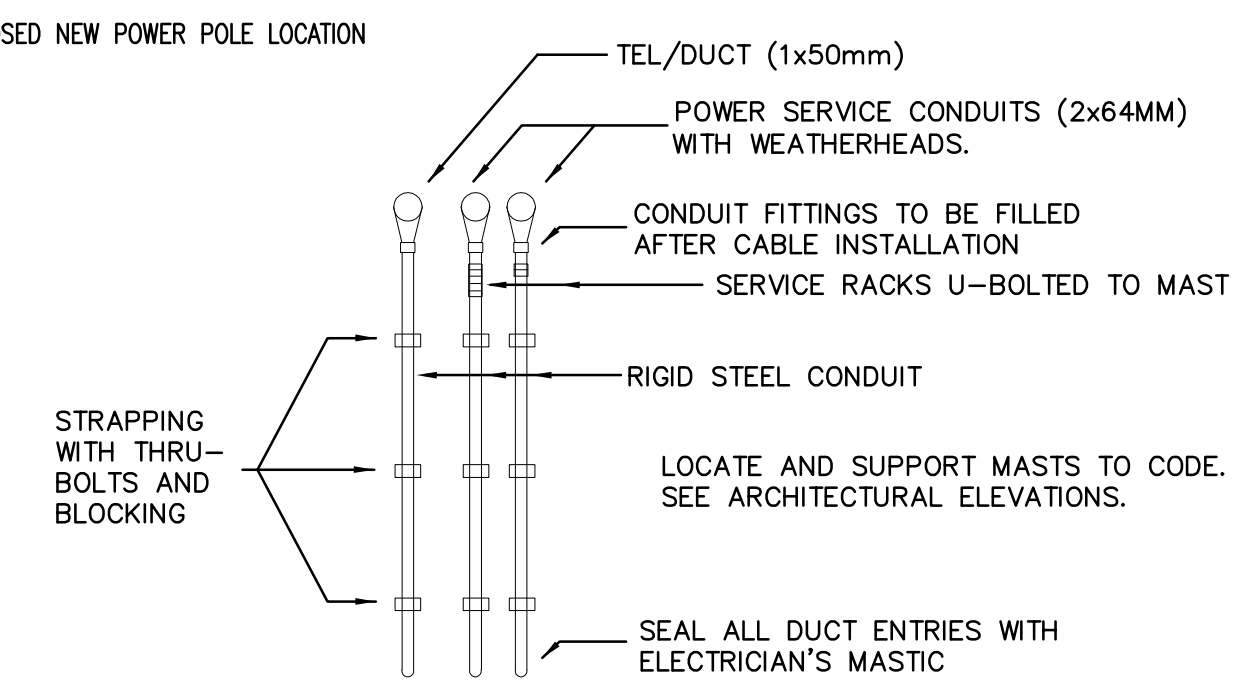
PROJECT No: 510-10 SHEET No: 2011/08/05 PLOT No:
DATE: 2011/08/05
DRAWN BY: SJS
SCALE: AS NOTED **M800**

DO NOT SCALE DRAWING. VERIFY ALL DIMENSIONS, DATA & ELEVATIONS PRIOR TO COMMENCEMENT OF WORK. COPYRIGHT OF RBM ARCHITECTURE INC.



NOTES:
 CONTRACTOR TO CONNECT FROM WP SPLITTER TO INCOMING SERVICE AT WEATHERHEAD MAST. PROVIDE SERVICE MAST TO NTPC REQUIREMENTS.
 OVERHEAD LINE TO BE 3.5M IN PEDESTRIAN AREAS AND 5.0M IN VEHICLE AREAS ABOVE FINISHED GRADE. ALLOW FOR LINE DROOP.

1 SITE PLAN
 E100 1:200 ELECTRICAL



CONSTRUCTION DRAWING
 CONTRACTOR:
 DATE: NOV 17/2011
 THIS DRAWING CONSISTS OF ORIGINAL TENDER DRAWINGS MODIFIED TO INCORPORATE ALL ADDENDUM ITEMS. CONTRACTOR IS RESPONSIBLE TO VERIFY VALIDITY.

Association of Professional Engineers & Geoscientists of Saskatchewan
CERTIFICATE OF AUTHORIZATION
PWA Engineering Ltd.
 Number C033
 Permission to Consult held by:
 Discipline Sk. Reg. No. Signature
 ELECTRICAL 4294 *R. M. Kelly*

SEALS:

 CLIENT:

Government of Canada

CONSULTANTS:

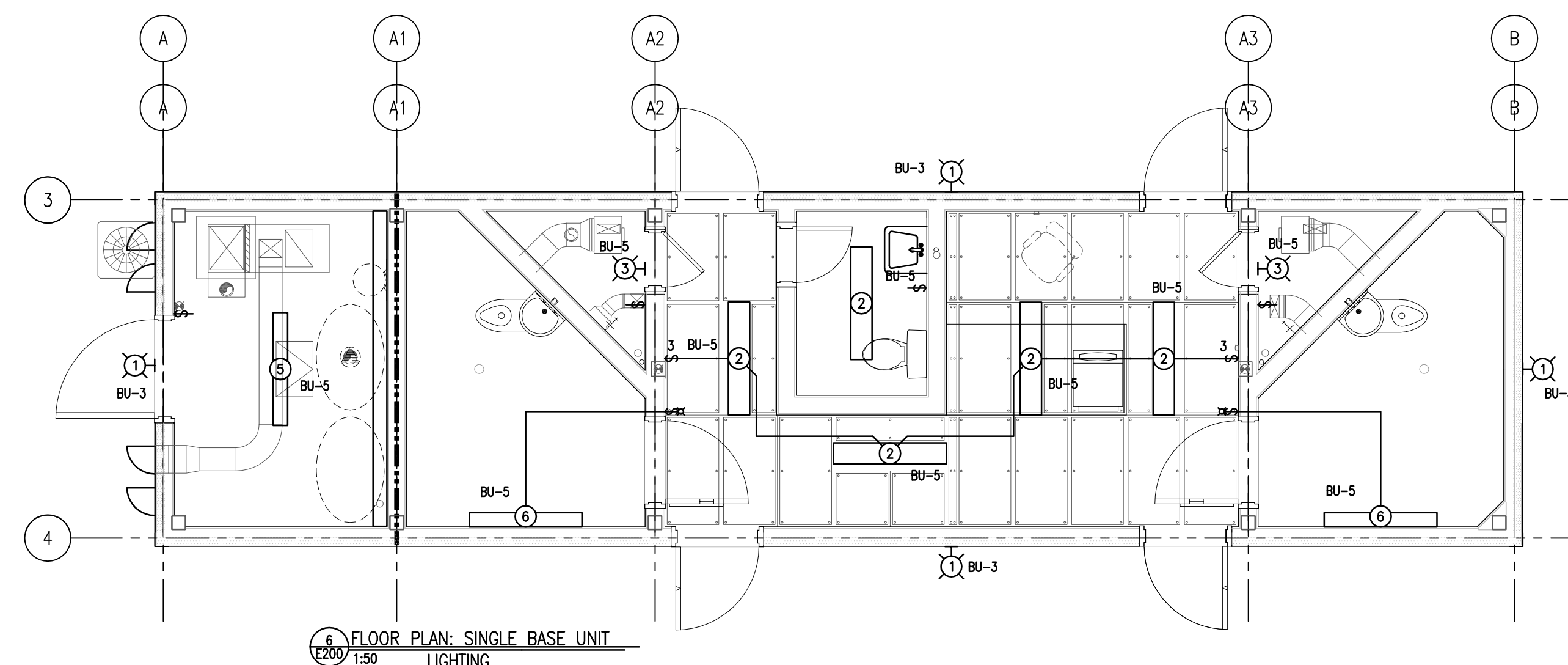
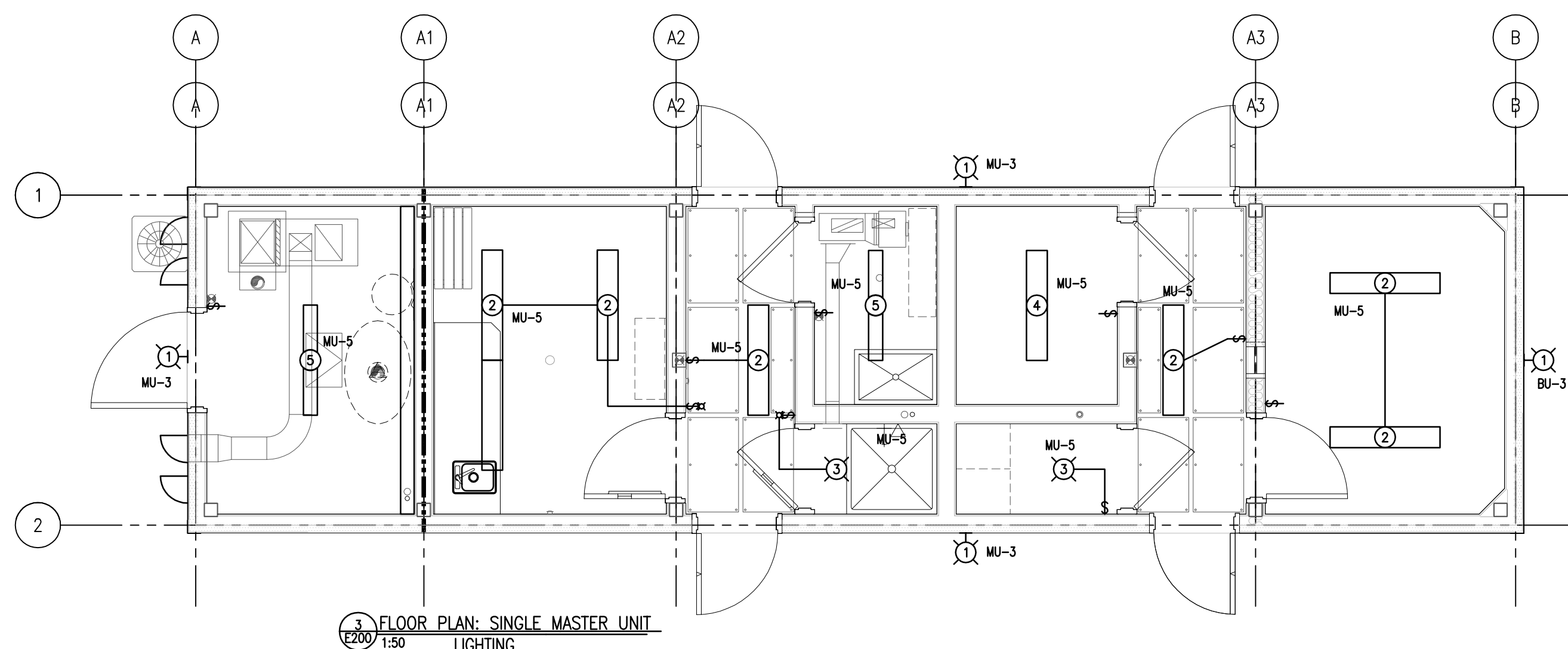
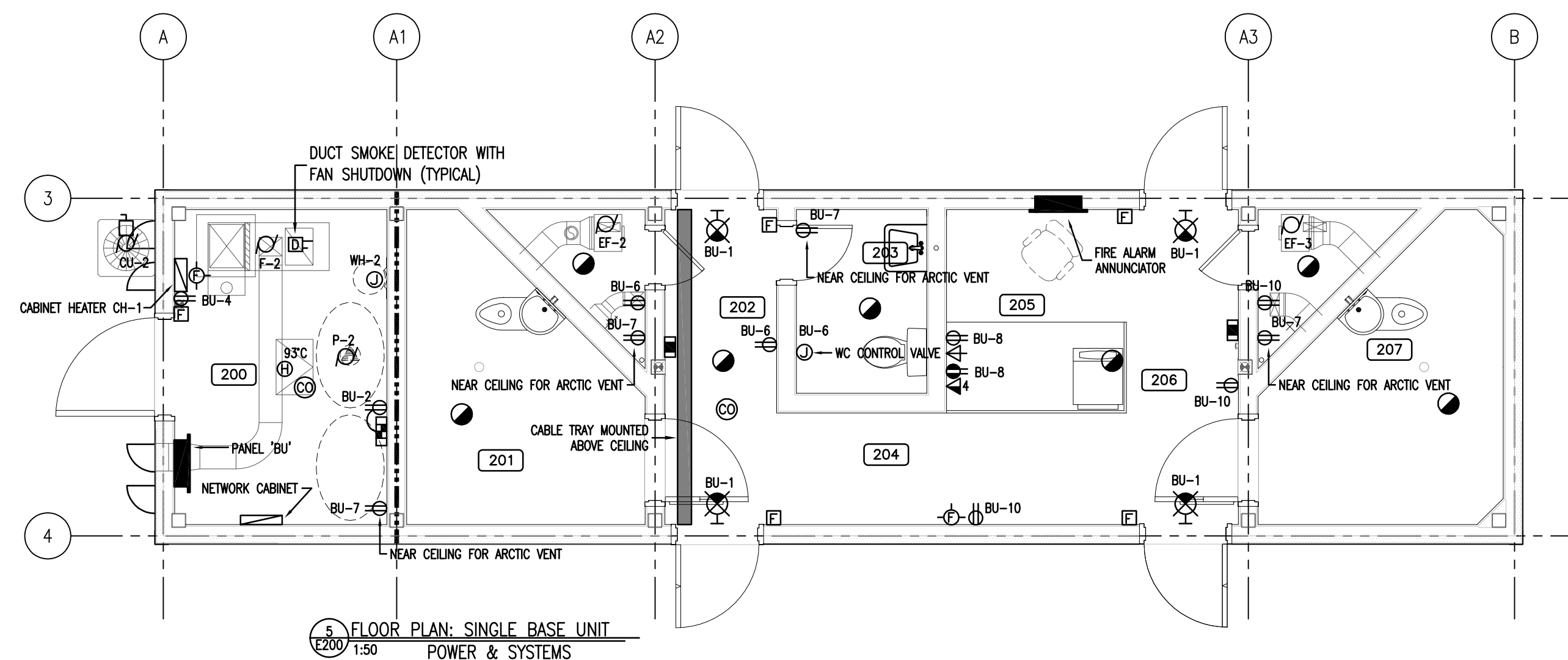
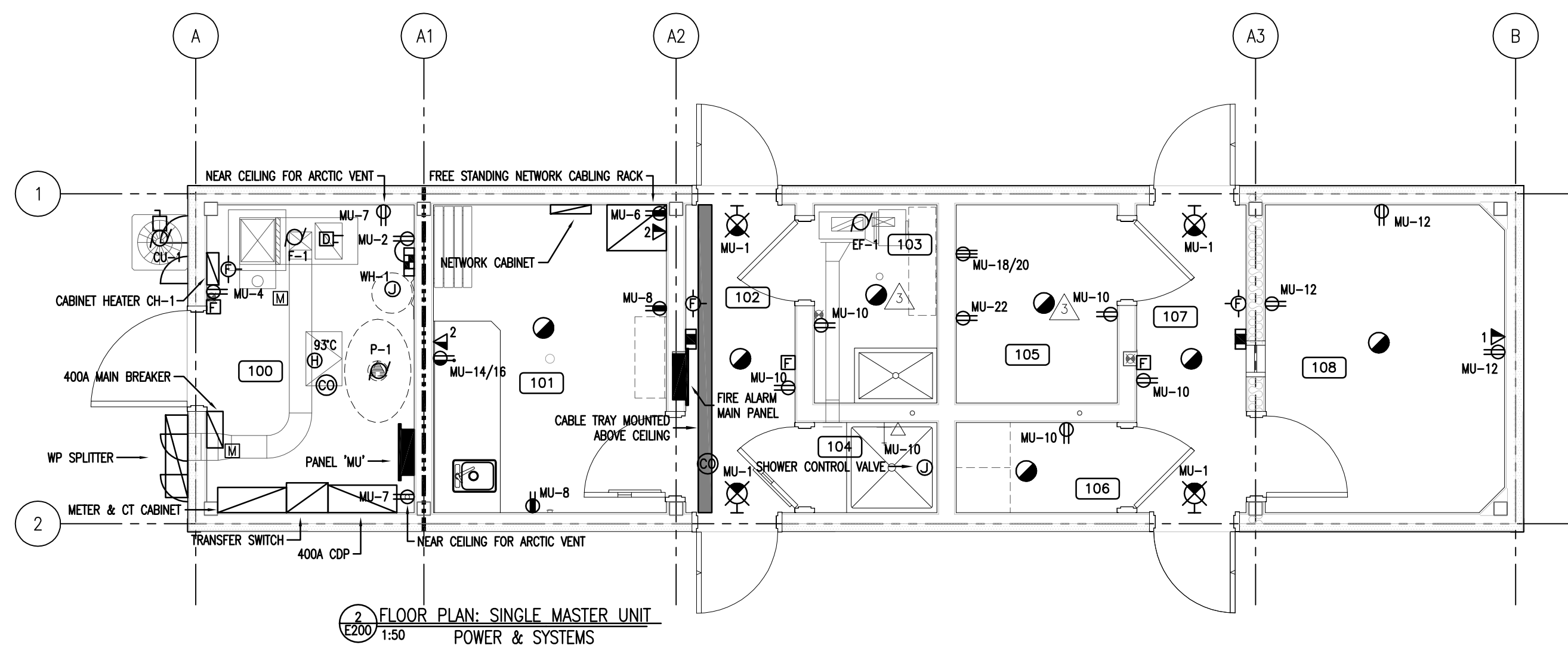
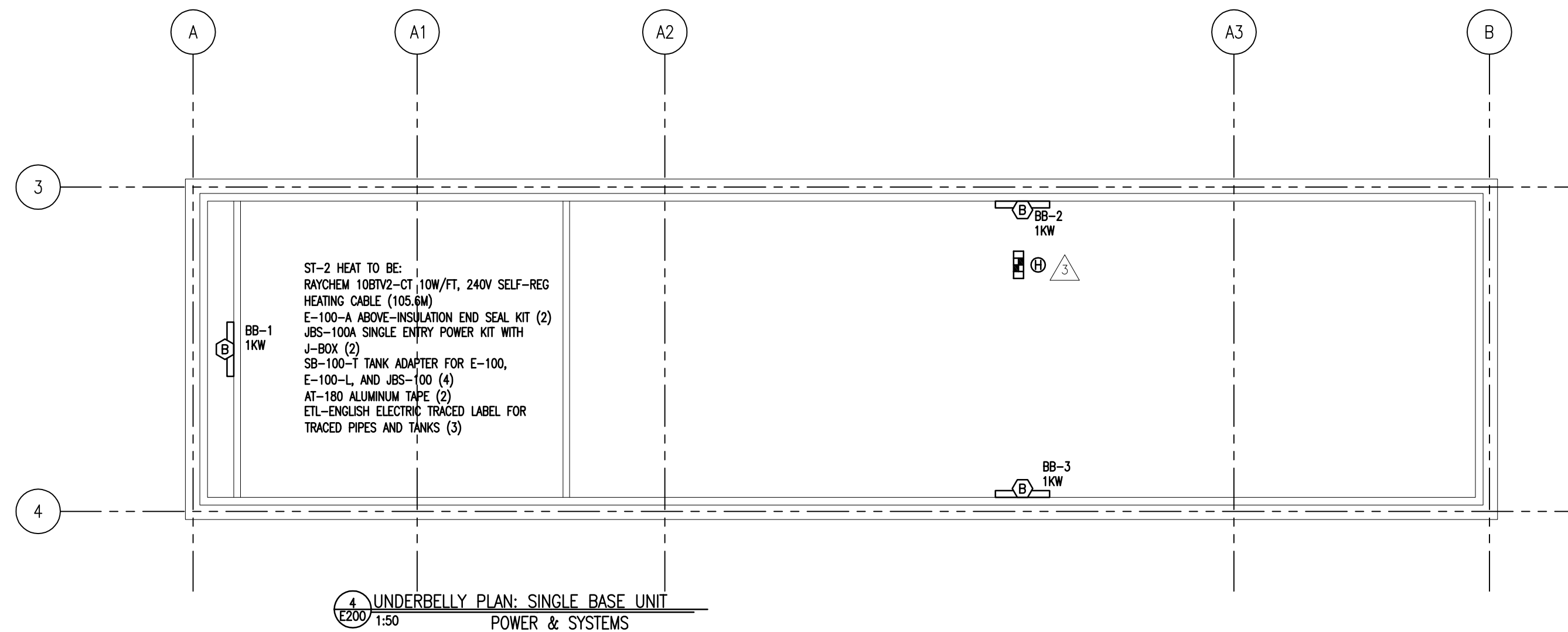
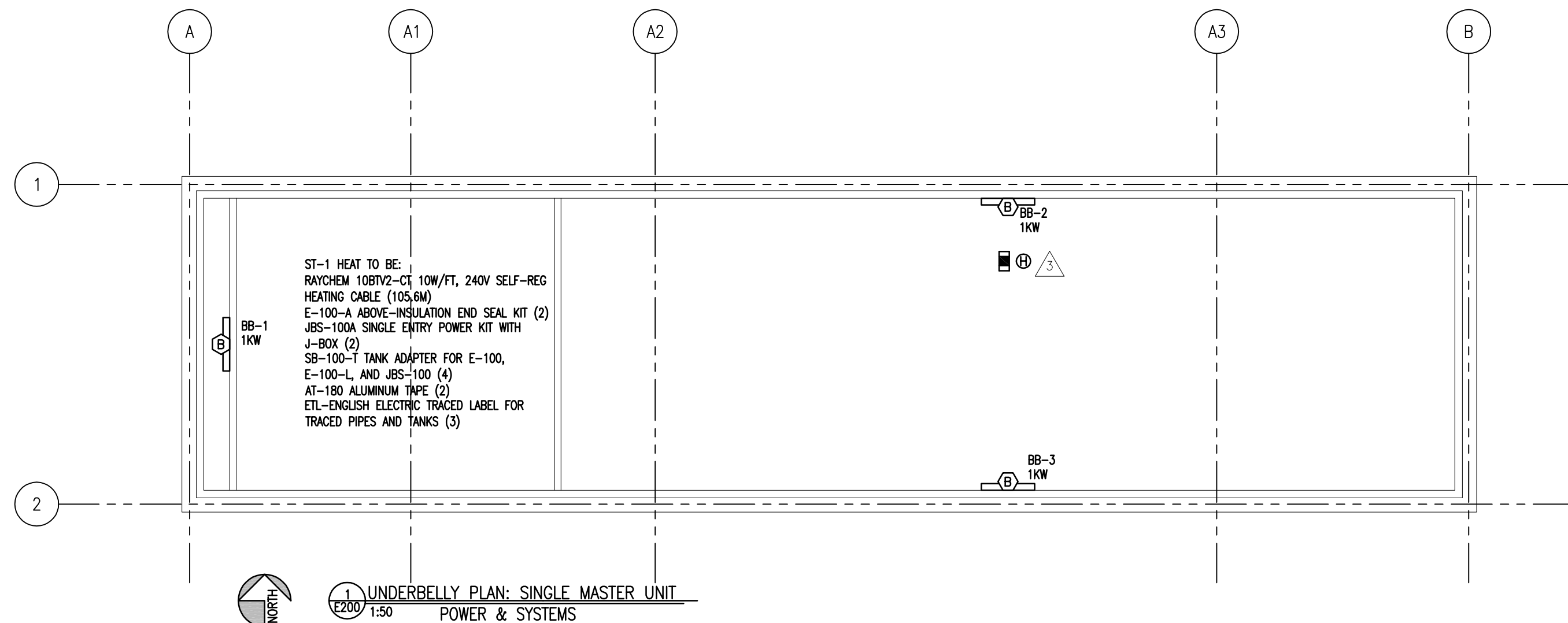
 CONSULTING ELECTRICAL ENGINEERS
 #102 - 301 CYNIA STREET SASKATOON, SK S7N 0B7
 TEL: (306) 242-2536 FAX: (306) 244-8371

R B M
 architecture
 2236 Sports Avenue Saskatoon, SK S7N 0B7
 email: office@rbm-architecture.ca * 704, 1101-101 Street North Battleford, SK S1A 1A1
 tel: 306-242-2536 fax: 306-441-4208

PROJECT:
POLICE TRANSPORTABLE HOLDING CELLS

DRAWING:
SITE PLAN: PROPOSED INUVIK, NWT ELECTRICAL

PWA 7020
 PROJECT No: 510-10 SHEET No: PLOT No: 1
 DATE: Aug 05, 2011
 DRAWN BY: ARZ
 SCALE: AS NOTED
E100



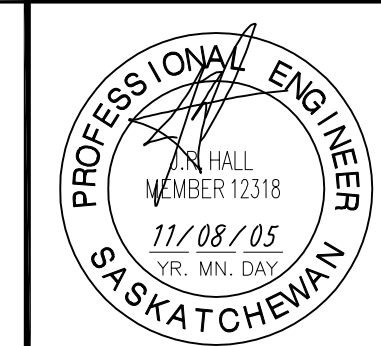
NOTES:
 1. 1KW BASEBOARD HEATER TO BE CHROMALOX BH410W11 C/W INTEGRAL THERMOSTAT.
 2. 1.5KW CABINET HEATER TO BE CHROMALOX RB15D31-MIT C/W INTEGRAL THERMOSTAT.

CONSTRUCTION DRAWING

CONTRACTOR:
 DATE: NOV. 17/2011
 THIS DRAWING CONSISTS OF ORIGINAL TENDER DRAWINGS MODIFIED TO INCORPORATE ALL ADDENDUM ITEMS. CONTRACTOR IS RESPONSIBLE TO VERIFY VALIDITY.

3 - ADDENDUM 3

Association of Professional Engineers & Geoscientists of Saskatchewan
CERTIFICATE OF AUTHORIZATION
PWA Engineering Ltd.
 Number C033
 Permission to Consult held by:
 Discipline: ELECTRICAL Sk. Reg. No. 4294 Signature: *R. M. Kelly*



CLIENT:
Government of Canada

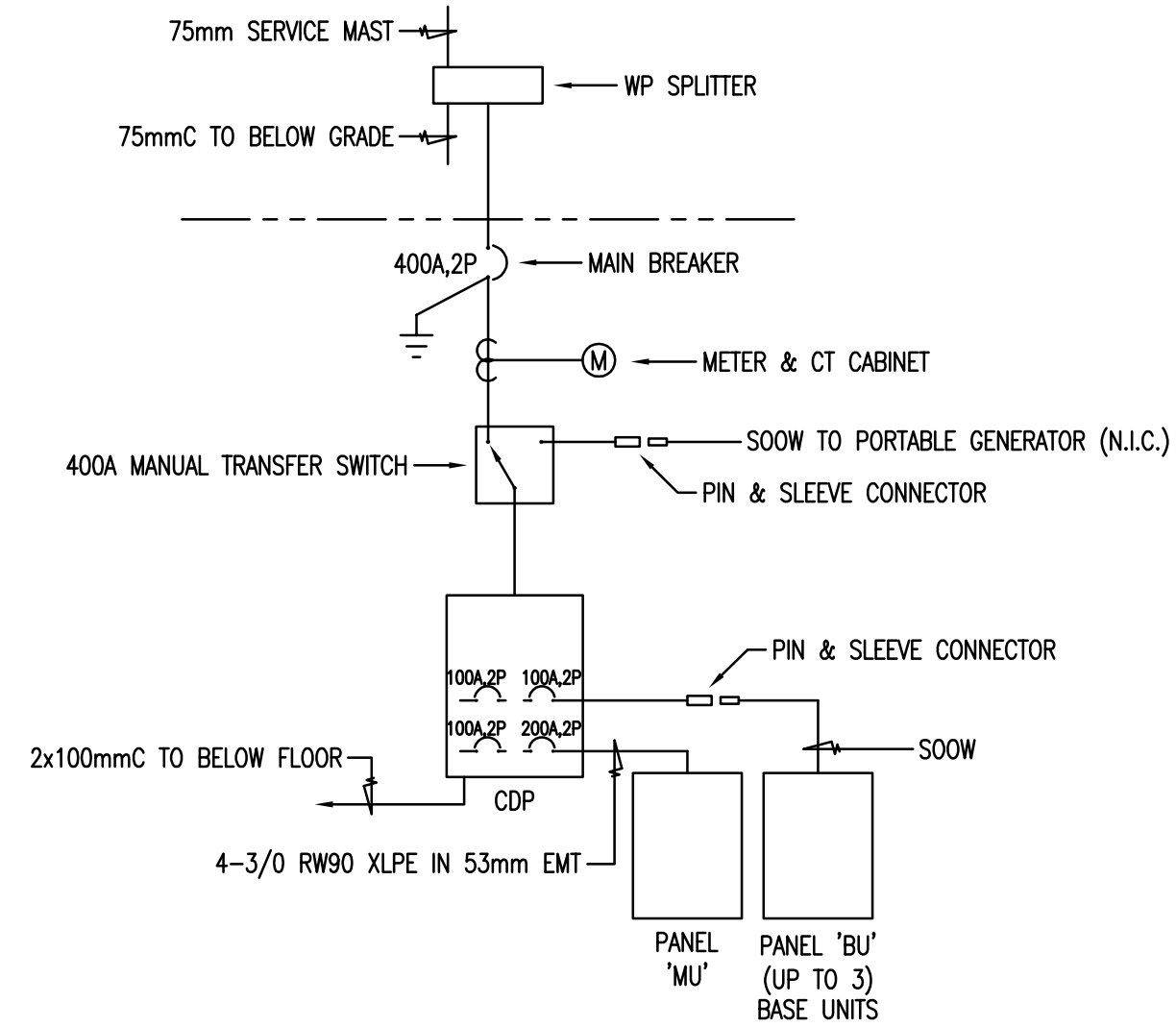
CONSULTANTS:
PWA ENGINEERING LTD.
 CONSULTING ELECTRICAL ENGINEERS
 #102 - 301 CYNIA STREET SASKATOON, SK S7N 0B7 TEL: (306) 242-2536 FAX: (306) 242-2537

R B M
 architecture
 2236 Spens Avenue Saskatoon, SK S7N 0B7
 email: office@rbmarchitecture.ca * 704, 1101-101 Street North, North Battleford, SK S1A 1A1
 ph: 306-242-2536 fax: 306-441-4236

PROJECT:
POLICE TRANSPORTABLE HOLDING CELLS

DRAWING:
FLOOR PLANS ELECTRICAL

PWA 7020
 PROJECT No: 510-10 SHEET No: PLOT No: 1
 DATE: Aug 05, 2011
 DRAWN BY: ARZ
 SCALE: AS NOTED
E200



120/240V-1Ø-3W POWER DISTRIBUTION ONE LINE DIAGRAM N.T.S.

| TYPE | DESCRIPTION | MANUFACTURER | CATALOGUE NO. | MOUNTING | LAMPS | NOTES |
|------|--|------------------|-----------------------|----------|--------------------------|-------|
| 1 | LED WALL PACK TYPE 4 DISTRIBUTION WITH BACK LIGHT CONTROL | MAGNAN EDISON | ISW-A3-LED-E1-BL4 | WALL | LED (2W) | |
| 2 | 4 SURFACE MOUNTED VANDAL RESISTANT FLUORESCENT FIXTURE WITH TAMPERPROOF FASTENERS, INJECTION MOLDED POLYCARBONATE GASKETTED LENS FOR NET LOCATIONS | LITHONIA | V50-220-120-ML-CSA-RS | SURFACE | 2x20W T8 | |
| 3 | VANDAL RESISTANT RECTANGULAR FIXTURE WITH CAST HOUSING, HORIZONTALLY MOUNTED & CLEAR PRISMATIC POLYCARBONATE LENS | PIELESS ELECTRIC | V9-220-120 | SURFACE | 2x20W T8 | |
| 4 | 4 FLUORESCENT SURFACE WRAP WITH PRISMATIC LENS AND WHITE METAL END CAPS | COOPER FAI-SAFE | F75-220-120 | SURFACE | 2x20W T8 | |
| 5 | 4 8TWP FLUORESCENT FIXTURE C/W WIPESHADE | LITHONIA | V92C-80T7-120-CSA-LP1 | WALL | 1-20W QT | |
| 6 | 4 VANDAL PROOF FLUORESCENT FOR CORNER MOUNTING IN PRISONER CELLS, TO BE COMPLETE WITH NIGHT LIGHT, 14 GAUGE STEEL HOUSING WITH PRISMATIC ACRYLIC PANEL LENS AND 1/2" POLYCARBONATE OUTER | KENWELL | HP125-C-280-1-120 | SURFACE | 2x20W T8 & 8W NIGHT LITE | |

| LEGEND | |
|--------|--|
| SYMBOL | DESCRIPTION |
| | FLUORESCENT FIXTURE - CEILING MOUNT |
| | FLUORESCENT FIXTURE - WALL MOUNT |
| | INCANDESCENT/HID FIXTURE - SURFACE/WALL MOUNT |
| | EXIT LIGHT - SURFACE/WALL MOUNT SHADING INDICATES LIT FACE |
| | SWITCH 3=3WAY D=DIMMER K=KEYED T=TIMELOCK |
| | PILOT LIGHT SWITCH |
| | DUPLEX RECEPTACLE * = COUNTER HEIGHT |
| | SPLIT WIRE RECEPTACLE |
| | GROUND FAULT CIRCUIT INTERRUPTER RECEPTACLE |
| | DOUBLE DUPLEX RECEPTACLE |
| | JUNCTION BOX |
| | NORMAL POWER PANEL AS INDICATED |
| | FIRE ALARM PANEL/ANNUNCIATOR AS INDICATED |
| | EMERGENCY BATTERY UNIT C/W LIGHTING HEADS |
| | REMOTE EMERGENCY LIGHTS, SINGLE & DOUBLE |
| | MOTOR |
| | DISCONNECT SWITCH |
| | MOTORIZED DAMPER |
| | SMOKE DETECTOR |
| | HEAT DETECTOR |
| | FIRE ALARM PULL STATION |
| | FIRE ALARM HORN/STROBE |
| | CARBON MONOXIDE DETECTOR |
| | STRUCTURED WIRING OUTLET |
| | TELEVISION OUTLET |
| | DOOR CONTACT |
| | MOTION DETECTOR |
| | SECURITY SIREN ALARM |
| | SECURITY CARD READER |
| | SECURITY KEYPAD |
| | CLOSED CIRCUIT TELEVISION |
| | CCTV CAMERA |
| | SECURITY DEVICE AS NOTED |

| PANEL MU | | | | | | | | | |
|-----------------|------|---------------------------------|------|---------------------------|------------------------|-------------------------------|------|-----------|------|
| | | VOLTS: 120/240 | | LOCATION: RM100 | | BUSSING: 225 | | | |
| | | PHASE: 1 FEEDER-SEE SINGLE LINE | | | | MTG. SURFACE | | | |
| | | WIRE: 3 | | | | | | | |
| CIRC. | BRKR | A | B | DESCRIPTION | DESCRIPTION | A | B | BRKR | CIRC |
| 1 | 1P15 | 100 | | EXIT LIGHTS | BATTERY UNIT | 360 | | 1P15 | 2 |
| 3 | 1P15 | 78 | | EXTERIOR LIGHTS | RM 100 RECEIPT | 200 | | 1P15 | 4 |
| 5 | 1P15 | 692 | | INTERIOR LIGHTS | NETWORK RACK RECEIPT | 800 | | 1P15 | 6 |
| 7 | 1P15 | 150 | | ARCTIC VENT | RM 101 RECEIPTS | 400 | | 1P15 | 8 |
| 9 | 1P15 | 373 | | P-1 WATER PRESSURE SYSTEM | RM 102-107 RECEIPTS | 900 | | 1P15 | 10 |
| 11 | 1P15 | 187 | | EF-1 EXHAUST FAN | RM 108 RECEIPTS | 300 | | 1P15 | 12 |
| 13 | 2P30 | 1500 | | WH-1 WATER HEATER | RM 101 COUNTER RECEIPT | 800 | | 2P15 | 14 |
| 15 | 2P15 | 1500 | | F-1 FURNACE | RM 105 DRYER | 800 | | 2P15 | 16 |
| 17 | 2P15 | 373 | | | RM 105 WASHER | 500 | | 1P15 | 22 |
| 21 | 2P15 | 1000 | | BB-2 | BB-1 | 1000 | | 1P15 | 24 |
| 23 | 2P15 | 750 | | CH-1 | BB-2 | 1000 | | 1P15 | 26 |
| 27 | 2P15 | 750 | | | BB-3 | 1000 | | 1P15 | 28 |
| 29 | 2P30 | 1600 | | CU-1 | ST-1 HEAT | 965 | | 2P30 | 30 |
| 31 | 1P15 | | | SPARE | SPARE | | | 1P15 | 32 |
| 33 | 1P15 | | | SPARE | SPARE | | | 1P15 | 34 |
| 35 | 1P15 | | | SPARE | SPARE | | | 1P15 | 36 |
| 37 | 1P15 | | | SPARE | SPARE | | | 1P15 | 38 |
| 39 | 1P15 | | | SPARE | SPARE | | | 1P15 | 40 |
| 41 | 1P15 | | | SPARE | SPARE | | | 1P15 | 42 |
| TOTAL | | 6388 | 5536 | | | 5675 | 5415 | TOTAL | |
| PHASE A TOTAL = | | 12063 | | | | 7410 | | | |
| PHASE B TOTAL = | | 11053 | | | | 7916 | | | |
| PANEL TOTAL = | | 23116 @ 120/240 VOLTS 1 PHASE | | | | 15326 @ 120/240 VOLTS 1 PHASE | | 63.9 AMPS | |
| REMARKS | | | | | | | | | |

| PANEL BU | | | | | | | | | |
|-----------------|------|---------------------------------|------|---------------------------|-----------------|-------------------------------|------|-----------|------|
| | | VOLTS: 120/240 | | LOCATION: RM200 | | BUSSING: 225 | | | |
| | | PHASE: 1 FEEDER-SEE SINGLE LINE | | | | MTG. SURFACE | | | |
| | | WIRE: 3 | | | | | | | |
| CIRC. | BRKR | A | B | DESCRIPTION | DESCRIPTION | A | B | BRKR | CIRC |
| 1 | 1P15 | 100 | | EXIT LIGHTS | BATTERY UNIT | 360 | | 1P15 | 2 |
| 3 | 1P15 | 78 | | EXTERIOR LIGHTS | RM 100 RECEIPT | 200 | | 1P15 | 4 |
| 5 | 1P15 | 564 | | INTERIOR LIGHTS | RM 202 RECEIPTS | 200 | | 1P15 | 6 |
| 7 | 1P15 | 300 | | ARCTIC VENT | RM 205 RECEIPTS | 600 | | 1P15 | 8 |
| 9 | 1P15 | 373 | | P-2 WATER PRESSURE SYSTEM | RM 206 RECEIPTS | 375 | | 1P15 | 10 |
| 11 | 1P15 | 300 | | EF-2, EF-3 EXHAUST FANS | BB-1 | 1000 | | 1P15 | 12 |
| 13 | 2P15 | 750 | | WH-2 WATER HEATER | BB-2 | 1000 | | 1P15 | 14 |
| 15 | 2P15 | 750 | | | BB-3 | 1000 | | 1P15 | 16 |
| 17 | 2P15 | 373 | | F-2 FURNACE | CH-1 | 750 | | 2P30 | 18 |
| 21 | 2P30 | 1600 | | | ST-2 HEAT | 965 | | 2P30 | 22 |
| 23 | 2P15 | | | CU-2 | SPARE | 965 | | 1P15 | 24 |
| 25 | 1P15 | | | SPARE | SPARE | | | 1P15 | 26 |
| 27 | 1P15 | | | SPARE | SPARE | | | 1P15 | 28 |
| 29 | 1P15 | | | SPARE | SPARE | | | 1P15 | 30 |
| 31 | 1P15 | | | SPARE | SPARE | | | 1P15 | 32 |
| 33 | 1P15 | | | SPARE | SPARE | | | 1P15 | 34 |
| 35 | 1P15 | | | SPARE | SPARE | | | 1P15 | 36 |
| 37 | 1P15 | | | SPARE | SPARE | | | 1P15 | 38 |
| 39 | 1P15 | | | SPARE | SPARE | | | 1P15 | 40 |
| 41 | 1P15 | | | SPARE | SPARE | | | 1P15 | 42 |
| TOTAL | | 3760 | 3401 | | | 3650 | 4515 | TOTAL | |
| PHASE A TOTAL = | | 7410 | | | | 7410 | | | |
| PHASE B TOTAL = | | 7916 | | | | 7916 | | | |
| PANEL TOTAL = | | 15326 @ 120/240 VOLTS 1 PHASE | | | | 15326 @ 120/240 VOLTS 1 PHASE | | 63.9 AMPS | |
| REMARKS | | | | | | | | | |

DO NOT SCALE DRAWING. VERIFY ALL DIMENSIONS, DATA & ELEVATIONS PRIOR TO COMMENCEMENT OF WORK. COPYRIGHT © RBM ARCHITECTURE INC.

CONSTRUCTION DRAWING
 CONTRACTOR:
 DATE: NOV. 17/2011
 THIS DRAWING CONSISTS OF ORIGINAL TENDER DRAWINGS MODIFIED TO INCORPORATE ALL ADDENDUM ITEMS. CONTRACTOR IS RESPONSIBLE TO VERIFY VALIDITY.

Association of Professional Engineers & Geoscientists of Saskatchewan
CERTIFICATE OF AUTHORIZATION
PWA Engineering Ltd.
 Number C033
 Permission to Consult held by:
 Discipline: ELECTRICAL Sk. Reg. No. 4294 Signature: *R. M. Kelly*



CLIENT:
Government of Canada

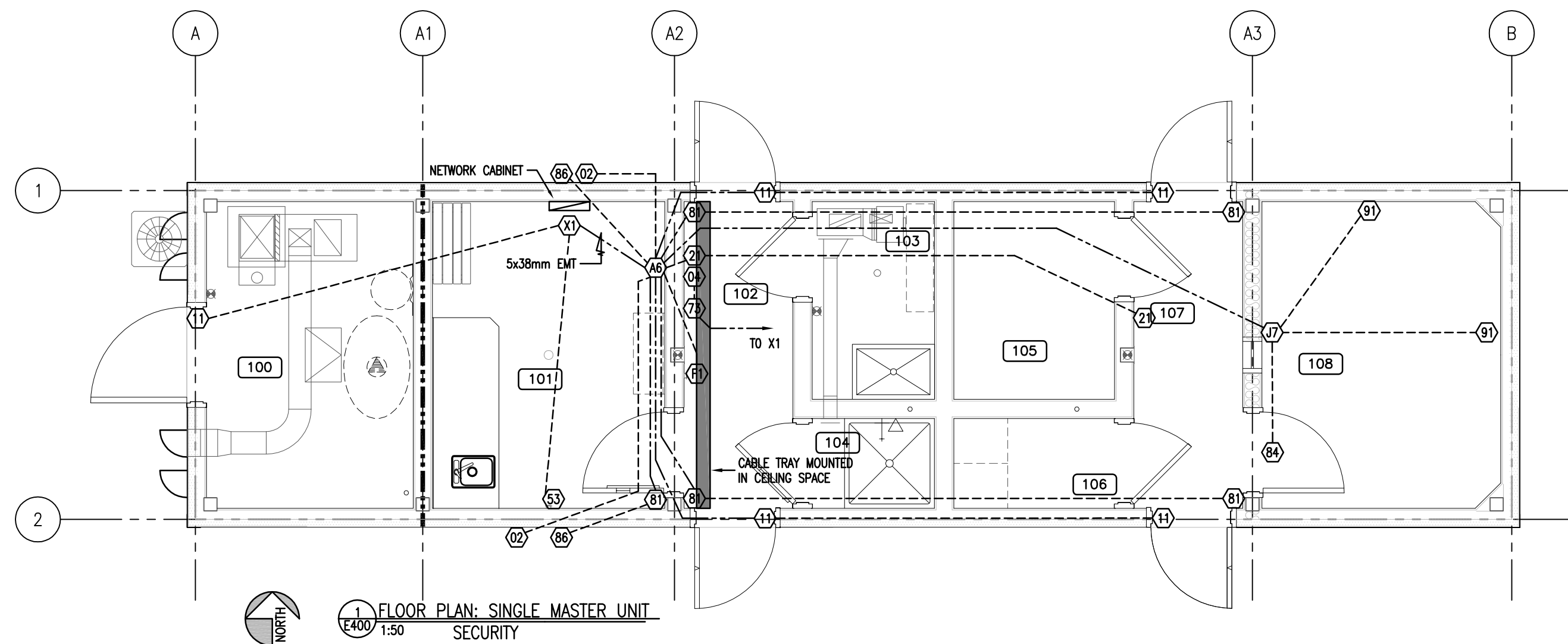
CONSULTANTS:
PWA ENGINEERING LTD.
 CONSULTING ELECTRICAL ENGINEERS
 #102 - 301 CYNIA STREET SASKATOON, SK S7N 0B7 TEL: (306) 244-4371 FAX: (306) 244-2771

R B M
 architecture
 2205 Sports Avenue Saskatoon, SK S7N 0B7 ph: 306.242.2836 email: office@rbm-architecture.ca * 704.1101-101 Street North, Burlington, ON L7R 4K6 fax: 306.242.9130

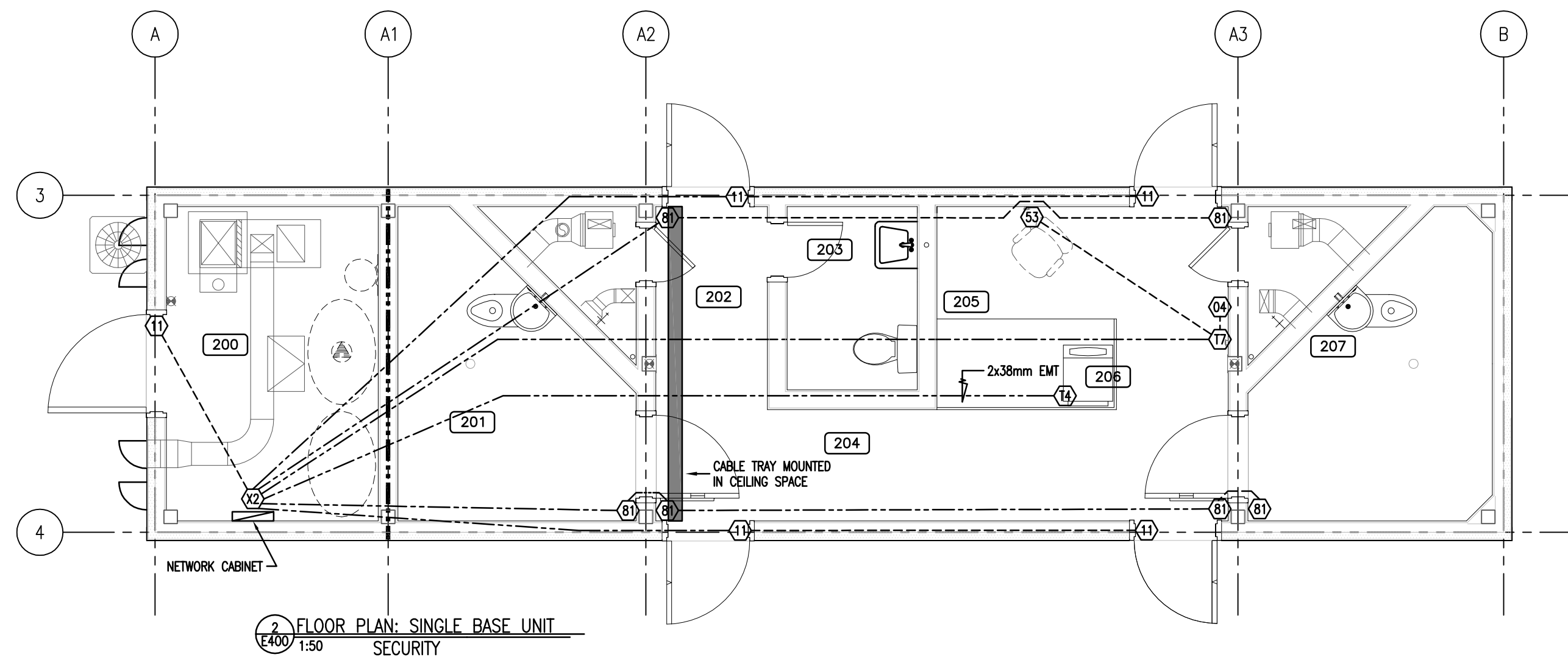
PROJECT:
POLICE TRANSPORTABLE HOLDING CELLS

DRAWING:
ELECTRICAL SCHEDULES & SCHEMATICS

PWA 7020
 PROJECT No: 510-10 SHEET No: PLOT No: 1
 DATE: Aug 05, 2011
 DRAWN BY: ARZ
 SCALE: AS NOTED
E300

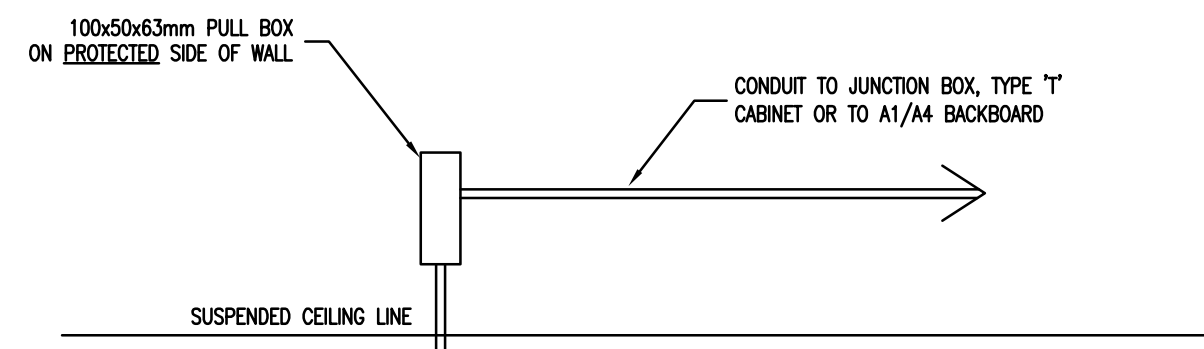


1 FLOOR PLAN: SINGLE MASTER UNIT SECURITY
E400 1:50



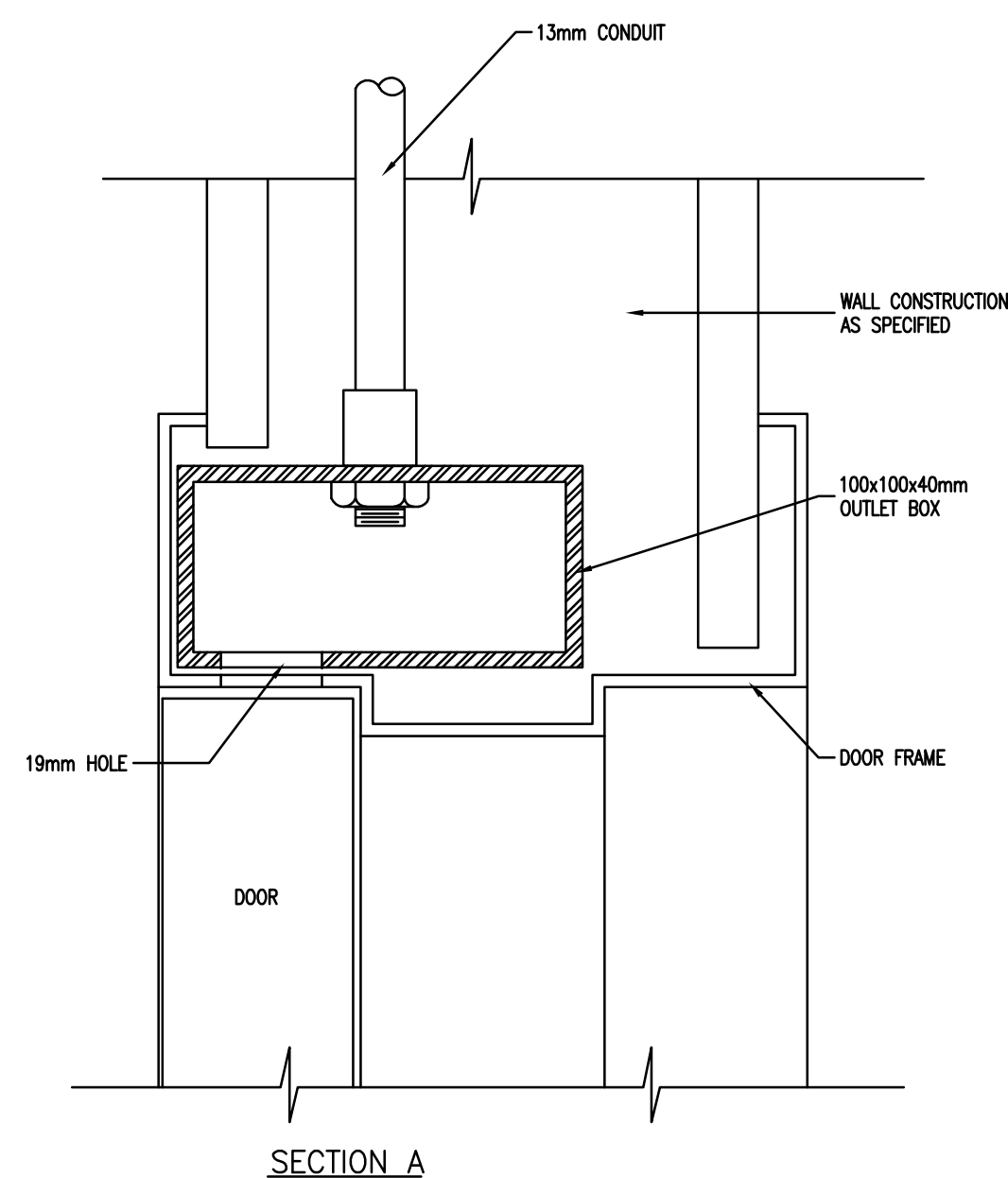
2 FLOOR PLAN: SINGLE BASE UNIT SECURITY
E400 1:50

13mmØ CONDUIT SIZED TO FIT CABLE UNLESS SPECIFIED OTHERWISE.



3 PROTECTED DOOR - ELEVATION OF SINGLE DOOR WITH DOOR CONTACT
E400 NTS

NOTES:
CONDUIT CONNECTOR TO BE MOUNTED AND FASTENED TO THE OUTLET BOX BY DOOR FRAME FABRICATOR.
OUTLET BOX TO BE SPOT WELDED IN PLACE BY DOOR FRAME FABRICATOR.
DRILL A 19MM HOLE AT 75MM (CENTER POINT) FROM THE EDGE OF THE DOOR CASING TO ALLOW FOR DOOR SWITCH INSTALLATION AND ACCESS TO WIRING.



SECTION A

DO NOT SCALE DRAWING. VERIFY ALL DIMENSIONS, DATA & ELEVATIONS PRIOR TO COMMENCEMENT OF WORK. COPYRIGHT OF RBM ARCHITECTURE INC.

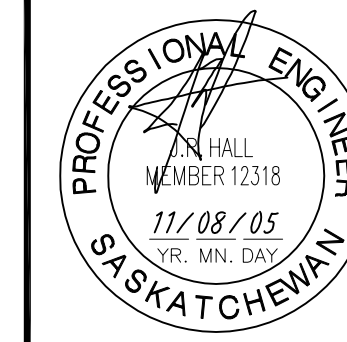
CONSTRUCTION DRAWING

CONTRACTOR:
DATE: NOV. 17/2011
THIS DRAWING CONSISTS OF ORIGINAL TENDER DRAWINGS MODIFIED TO INCORPORATE ALL ADDENDUM ITEMS. CONTRACTOR IS RESPONSIBLE TO VERIFY VALIDITY.

Association of Professional Engineers & Geoscientists of Saskatchewan
CERTIFICATE OF AUTHORIZATION
PWA Engineering Ltd.
Number C033

Permission to Consult held by:
Discipline Sk. Reg. No. Signature
ELECTRICAL 4294 *R. M. Kelly*

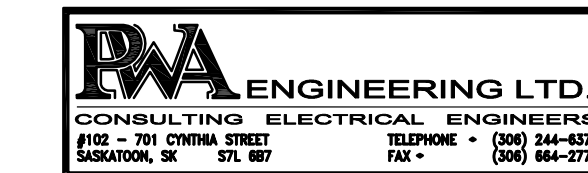
SEALS:



CLIENT:

Government of Canada

CONSULTANTS:



PROJECT:

POLICE TRANSPORTABLE HOLDING CELLS

DRAWING:

FLOOR PLANS SECURITY

| | | | |
|--------------------|--|----------------------|--|
| PROJECT No: 510-10 | | SHEET No: PLOT No: 1 | |
| DATE: Aug 05, 2011 | | E400 | |
| DRAWN BY: ARZ | | | |
| SCALE: AS NOTED | | | |