



Royal Canadian Mounted Police
Gendarmerie royale du Canada

RETURN BIDS TO :

RETOURNER LES SOUMISSIONS :

Bid Receiving Unit / Grope de la réception des soumissions

Procurement and Contracting Services
 73 Leikin Drive,
 Visitor Center - Building M1
 Mailstop # 15
 Ottawa, ON K1A 0R2

Attn: Megan McCoy (613) 843-3798

AMENDMENT TO THE INVITATION TO TENDER

Royal Canadian Mounted Police

We hereby offer to sell to Her Majesty the Queen in right of Canada, in accordance with the terms and conditions set out herein, referred to herein or attached hereto, the goods, services and construction listed herein and on any attached sheets at the price(s) set out therefore.

MODIFICATION À L'APPEL D'OFFRES

Gendarmerie royale du Canada

Nous offrons par la présente de vendre à Sa Majesté l Reine du chef du Canada, aux conditions énoncées ou incluses par référence dans la présente et aux annexes ci-jointes, les biens, services et construction énumérés ici sur toute feuille ci-annexée, au(x) prix indiqué(s).

Comments – Commentaries

Vendor/Firm Name and Address

Raison sociale et adresse du fournisseur/de l'entrepreneur

Telephone No. – No de téléphone:

()

Facsimile No. – No de télécopieur:

()

Title-Sujet RCMP B Block Redevelopment		
Solicitation No. – No. de l'invitation 201405073	Amend. – Modif. No. : 6	Date March 25, 2014
Client Reference No. - No. de Référence du Client 201405073		
GETS Reference No. – No de Référence du SEAG 201405073		
Solicitation Closes – L'invitation prend fin at - à 2 :00 pm EST on - le March 31st, 2014		
F.O.B. - F.A.B. Destination		
Address Enquiries to: - Adresser toute questions à : Eric Glynn – Manager - Procurement		
Telephone No. - No de téléphone 613-843-5533	Fax: 613-825-0082	
Destination of Goods - Destinations des biens: See Herein		
Instructions : See Herein / Voir aux présentes		
Delivery Required – Livraison exigée: See Herein		
Name and Title of person authorized to sign on behalf of Vendor/Firm. Nom et titre de la personne autorisée à signer au nom du fournisseur/de l'entrepreneur		



Royal Canadian Mounted Police

Gendarmerie royale du Canada

Amendment #6 of Solicitation 201405073 has been issued to provide Addendum #4 to the Specifications and Drawings.

ADDENDUM NUMBER: FOUR

ISSUED BY: SEPW Architecture Inc.
109 - 3725 Pasqua St., Regina, SK S4S 6W8
PH. (306) 569-2255

PROJECT: SHARED LEARNING FACILITY
REGINA, SK

This Addendum forms part of the Contract Documents and amends the original Drawings and Specifications dated 2014-01-17, previous Addenda if applicable and as noted below. This Addendum consists of 3 pages and attached Specification Sections and Drawings as listed below.

Ensure that all parties are aware of all items included in this Addendum.

The following revised or additional Drawings accompany and form an integral part of this Addendum:

Dwg. No.	Title	Date of Issue
M2-1R1	Partial Third Floor Plan Mechanical Demolition	Mar 2014
M2-2R1	Partial Fourth Floor Plan Mechanical Demolition	Mar 2014
M2-7R1	Partial Second Floor Plan Mechanical Demolition	Mar 2014
M4-1R1	Partial Third Floor Plan Ventilation Revisions	Mar 2014
M4-2R1	Partial Fourth Floor Plan Ventilation Revisions	Mar 2014
M4-4R1	Partial Second Floor Plan Ventilation Revisions	Mar 2014
E3.2R2	Fourth Floor Partial Power/Systems Plan	2014-03-24
E3.2R3	Fourth Floor Partial Power/Systems Plan	2014-03-24

A4-1 REF. SECTION 07 52 00, MODIFIED BITUMINOUS MEMBRANE ROOFING

- .1 2.1.1 REVISE to read “RSI: Average RSI 5.3 (R30) minimum.”
- .2 2.1.2.1.3 REVISE to read “Thickness: 100mm (R24)”
- .3 2.1.2.1.4 REVISE to read “Location: Top surface of roof deck.”
- .4 2.1.3.4 REVISE to read “Tapered to achieve minimum slope of 2%.”
- .5 2.1.3.5 REVISE to read “Location: Top layer of roof insulation.”

A4-2 REF. SECTION 23 82 00, TERMINAL HEAT TRANSFER UNITS

- .1 2.2 Fan Coils, under Article 2.2.7.1, REPLACE “MERV 8” with “MERV 4”.

A4-3 REF. DRAWING A2.16

- .1 Reference Drawing 1, Third Floor Reflected Ceiling Plan; PROVIDE one 610 x 610 ceiling access panel in Room 310 and Room 311, to access electrical cable tray. Refer to Specification Section 08 31 00.

A4-4 REF. DRAWING M2-1

- .1 Refer to Drawing M2-1R1 accompanying this addendum for revisions to Drawing M2-1 that more accurately reflect the current as-built condition in the space and the required associated scope.

A4-5 REF. DRAWING M2-2

- .1 Refer to Drawing M2-2R1 accompanying this addendum for revisions to Drawing M2-2 that more accurately reflect the current as-built condition in the space and the required associated scope.

A4-6 REF. DRAWING M2-7

- .1 Refer to Drawing M2-7R1 accompanying this addendum for revisions to Drawing M2-7 that more accurately reflect the current as-built condition in the space and the required associated scope.

A4-7 REF. DRAWING M4-1

- .1 Refer to Drawing M4-1R1 accompanying this addendum for revisions to Drawing M4-1 that indicate revised scope to address the as-built condition in the space.

A4-8 REF. DRAWING M4-2

- .1 Refer to Drawing M4-2R1 accompanying this addendum for revisions to Drawing M4-2 that indicate revised scope to address the as-built condition in the space.

A4-9 REF. DRAWING M4-4

- .1 Refer to Drawing M4-4R1 accompanying this addendum for revisions to Drawing M4-4 that indicate revised scope to address the as-built condition in the space.

A4-10 REF. DRAWING E3.2

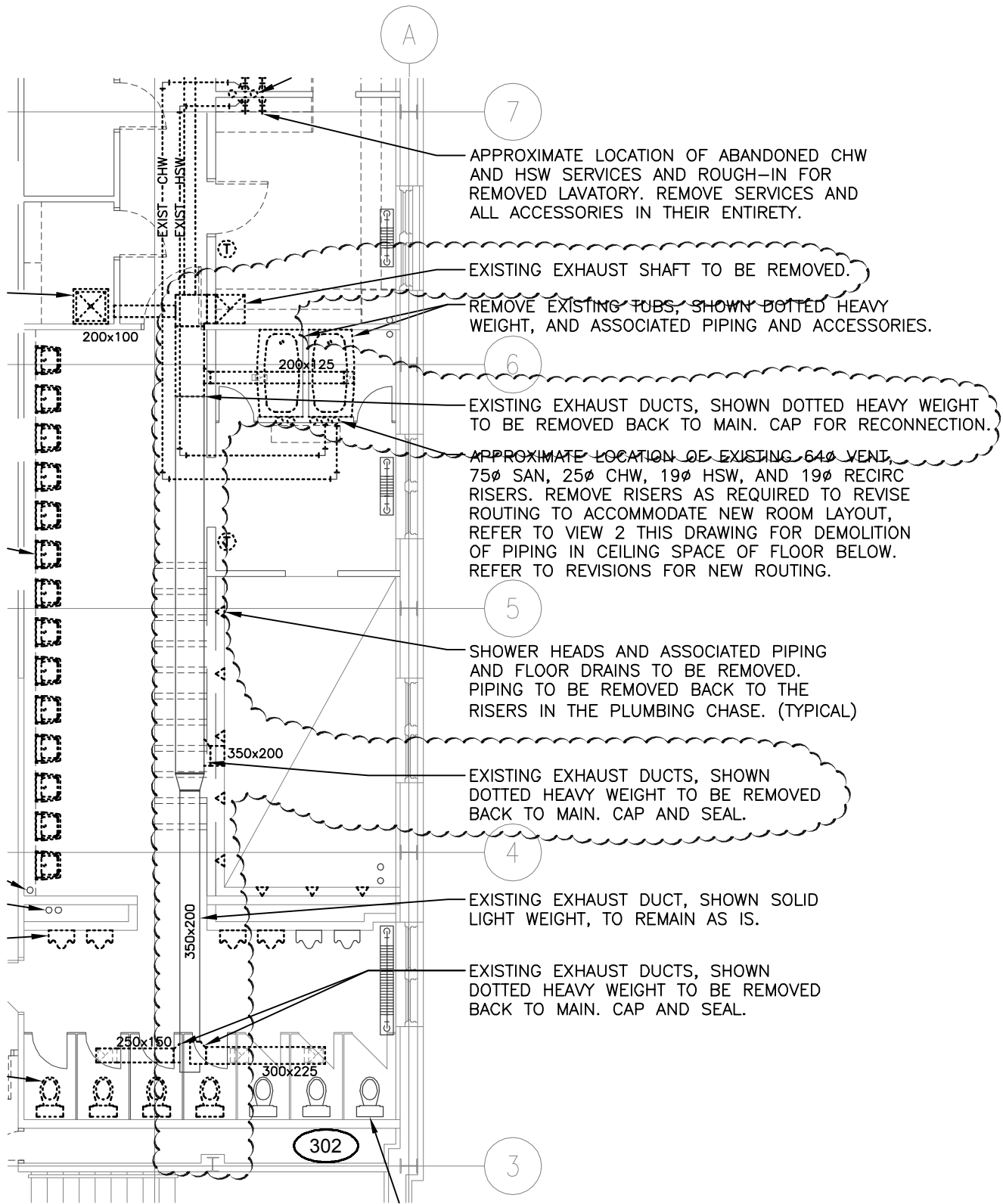
- .1 Provide additional 2x4" basket tray above ceiling in locations as shown in sketches E3.2R2 and E3.2R3 accompanying this addendum.
- .2 Remove voice outlet from the following rooms: 309, 313, 316, 320, 321, 325, 330, 333, 363.
- .3 EF-1 located in room 364 shall be fed from 3 pole breaker located in panel 3MA.
- .4 The Contractor shall provide an independent smoke alarm system for use within all lockable cells in the Maximum Range (cells 341-347), SLE (cells 310-311), and Medium Range (cells 366-371). The three areas noted may either be three separate systems or one combined system. The system shall consist of ceiling mounted photo-electric smoke alarms that are connected back to a head-end that monitors the devices and produces an alarm condition on the event of any smoke detection within the cells.

The alarm condition shall consist of an audible and visual alarm at the associated guard station for each of the range locations noted herein. There is not requirement at this time to connect this system into the main fire alarm system, but the smoke alarm control panel(s) shall have the capability and contacts required to allow this connection to take place in the future if required. The head-end control of each of the smoke alarms shall monitor the smoke alarm and if there is a malfunction of the device or the device is removed, then the control panel shall produce a "trouble" alarm condition which shall be a different audible and visual alarm than the "smoke detection alarm" condition. The contractor shall provide a separate 120-volt connection to each smoke alarm control panel head-end (2 #12RW90 + bond within EMT). The Contractor shall provide the required commissioning for this system and prove during the commission stage that each device condition, both smoke detection and trouble condition is tested and proved operational.

A4-11 REF. DRAWING E3.3

- .1 Provide a STI EZ-Path series 44+ fire rated sleeve for new data cable to pass through horizontal fire separation into room 414. Fire stop wall penetration.
- .2 Revise power and data wiring methods in classrooms 438, 437, and 408. Each pod (every pod seats 4 students) shall have a dedicated floorbox located under the center of the table. Contractor to provide floorbox, transition channel from floorbox to table, power and data cables from floorbox to table, and terminations of these cables to owner supplied equipment located in the tables. Each floorbox shall have 2 dedicated circuits each feeding a separate duplex receptacle and 5 x data connections to the IMS network. Contractor to provide the power and data cables from floorbox to table for both duplex receptacles, and 4 data connections. Floorboxes shall be Legrand 6AT Evolution series or approved equal. Transition channels shall be wiremold's Integreat series or approved equal. Please remove all references to drawing notes 15-19.
- .3 Remove voice outlet from the floorbox of room 420.

END OF ADDENDUM NO. 4



HDA ENGINEERING LTD.
Mechanical Engineering Consultants

1580 Angus Street Regina, Saskatchewan S4T 1Z1
P:306-525-9815 F: 306-525-6369 E: hda@hdaeng.com

PROJECT **SHARED LEARNING FACILITY**
REGINA, SK

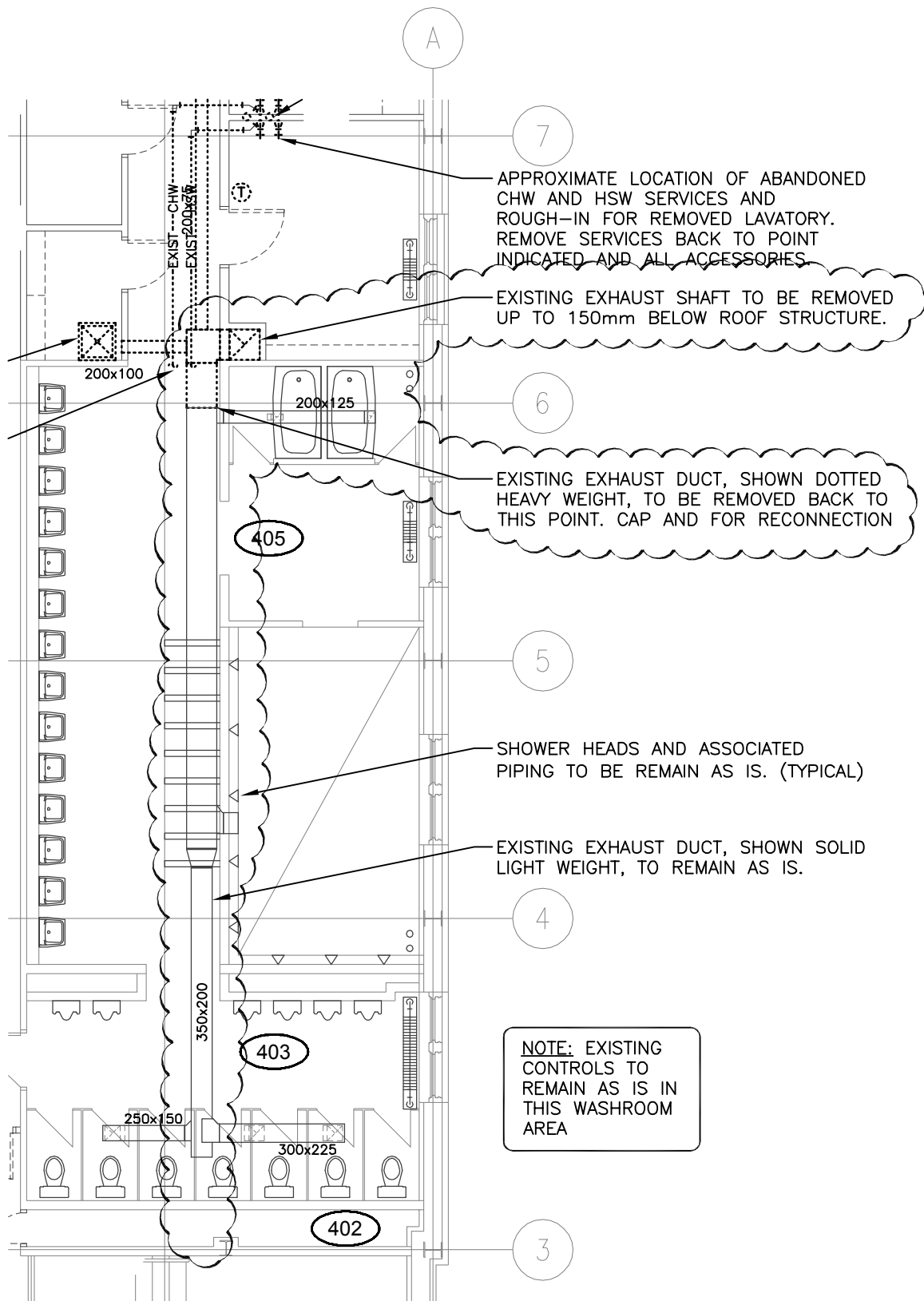
SHEET TITLE **PARTIAL THIRD FLOOR PLAN**
MECHANICAL DEMOLITION

DRAWING NUMBER

M2-1R1

SCALE **1:100** FILE **05/2013**

DATE **MAR, 2014** DRAWN **JJB**



HDA ENGINEERING LTD.
Mechanical Engineering Consultants

1580 Angus Street Regina, Saskatchewan S4T 1Z1
P: 306-525-9815 F: 306-525-6369 E: hda@hdaeng.com

**PROJECT SHARED LEARNING FACILITY
REGINA, SK**

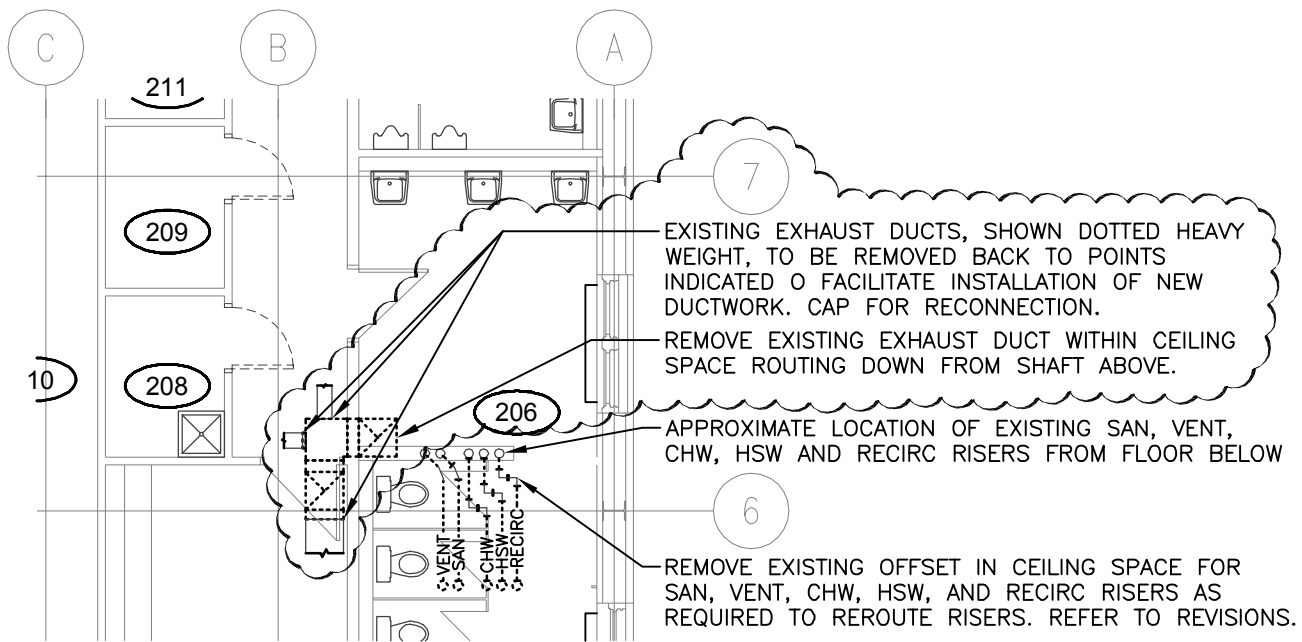
**SHEET TITLE PARTIAL FORTH FLOOR PLAN
MECHANICAL DEMOLITION**

DRAWING NUMBER

M2-2R1

SCALE 1:100 FILE 05/2013

DATE MAR, 2014 DRAWN JJB



HDA ENGINEERING LTD.
Mechanical Engineering Consultants

1580 Angus Street Regina, Saskatchewan S4T 1Z1
P:306-525-9815 F: 306-525-6369 E: hda@hdaeng.com

PROJECT **SHARED LEARNING FACILITY
REGINA, SK**

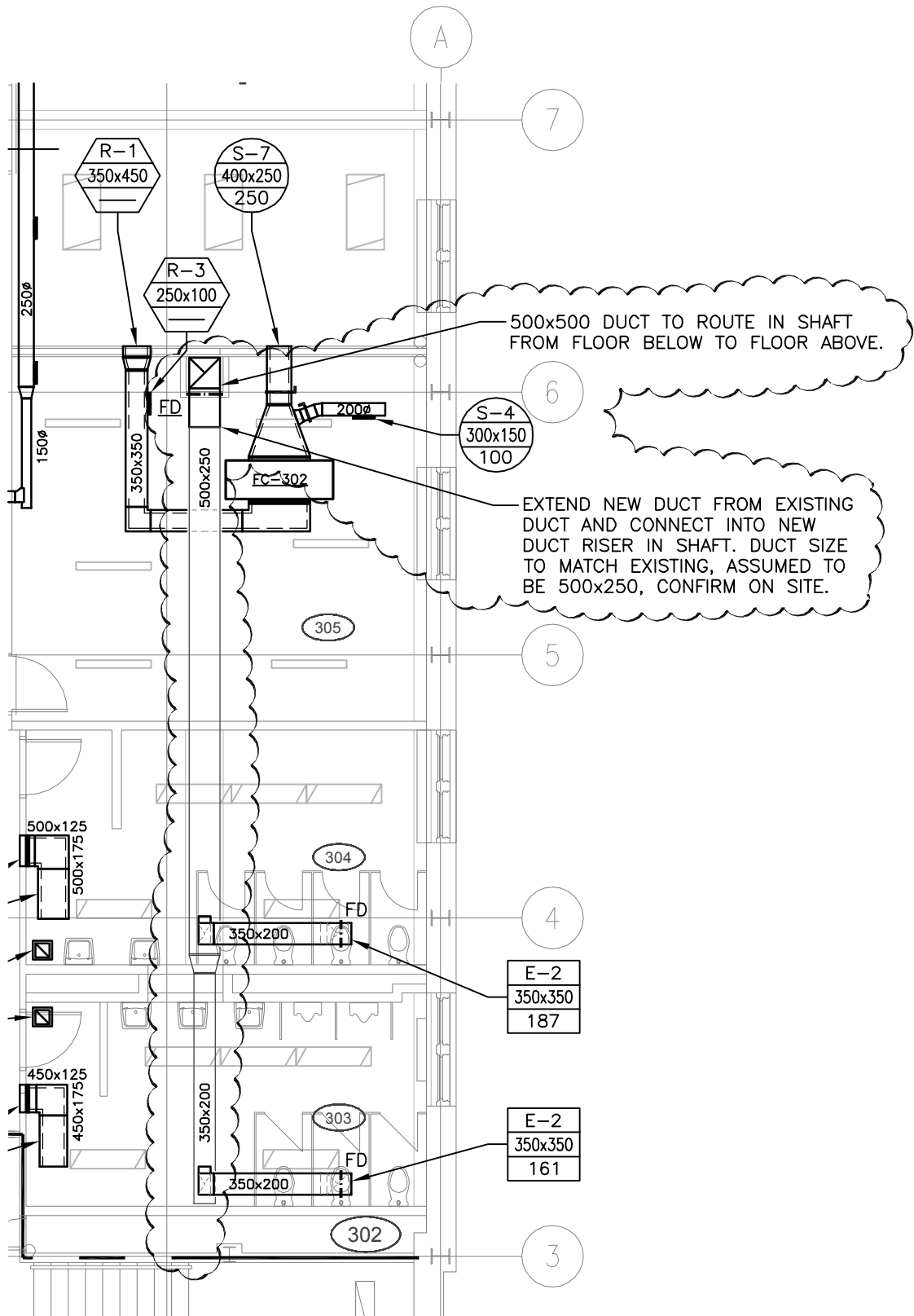
SHEET TITLE **PARTIAL SECOND FLOOR PLAN
MECHANICAL DEMOLITION**

DRAWING NUMBER

M2-7R1

SCALE **1:100** FILE **05/2013**

DATE **MAR, 2014** DRAWN **JJB**



HDA ENGINEERING LTD.
Mechanical Engineering Consultants

1580 Angus Street Regina, Saskatchewan S4T 1Z1
P: 306-525-9815 F: 306-525-6369 E: hda@hdaeng.com

**PROJECT SHARED LEARNING FACILITY
REGINA, SK**

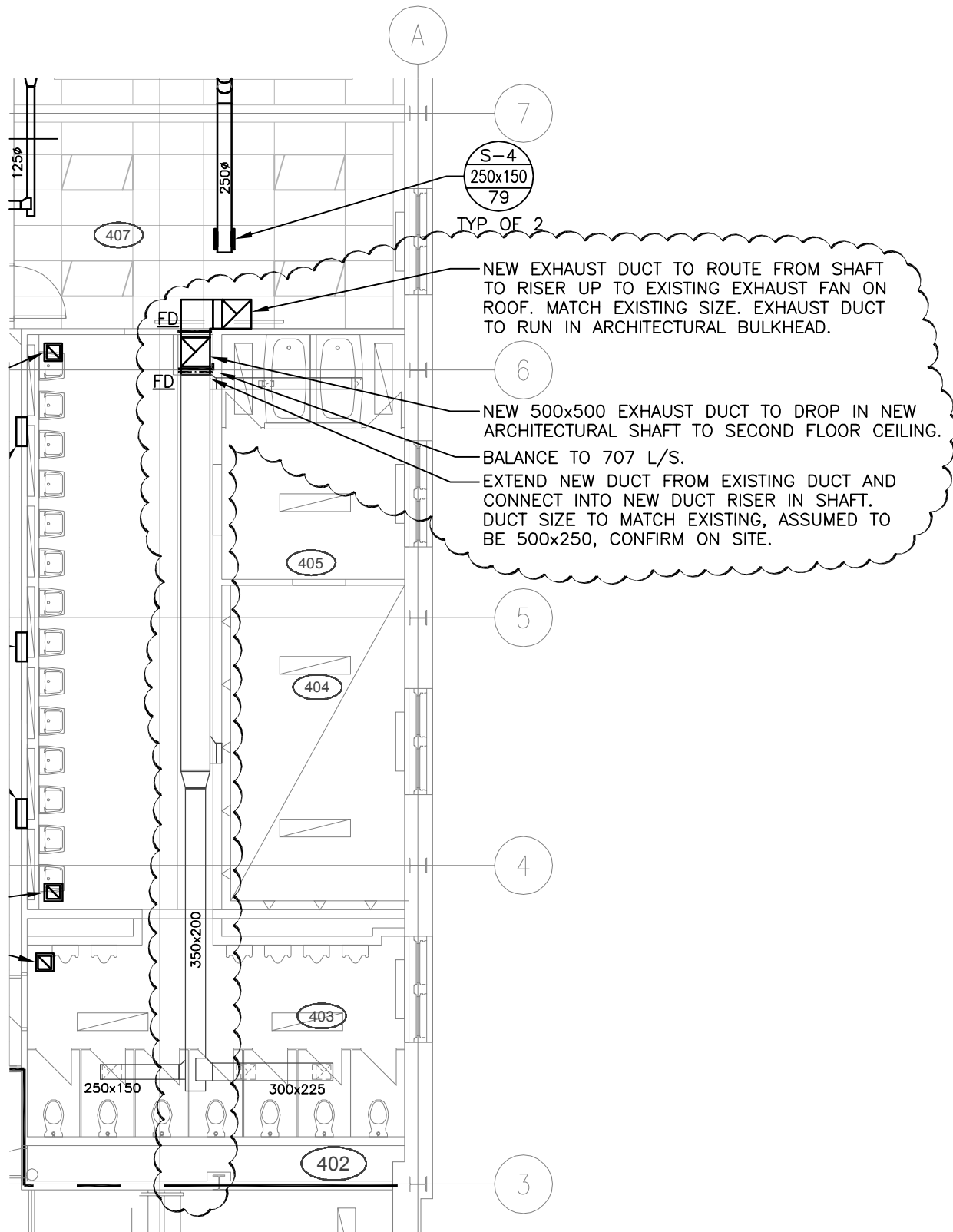
**SHEET TITLE PARTIAL THIRD FLOOR PLAN
VENTILATION REVISIONS**

DRAWING NUMBER

M4-1R1

SCALE 1:100 FILE 05/2013

DATE MAR, 2014 DRAWN JJB



HDA ENGINEERING LTD.
Mechanical Engineering Consultants

1580 Angus Street Regina, Saskatchewan S4T 1Z1
P: 306-525-9815 F: 306-525-6369 E: hda@hdaeng.com

**PROJECT SHARED LEARNING FACILITY
REGINA, SK**

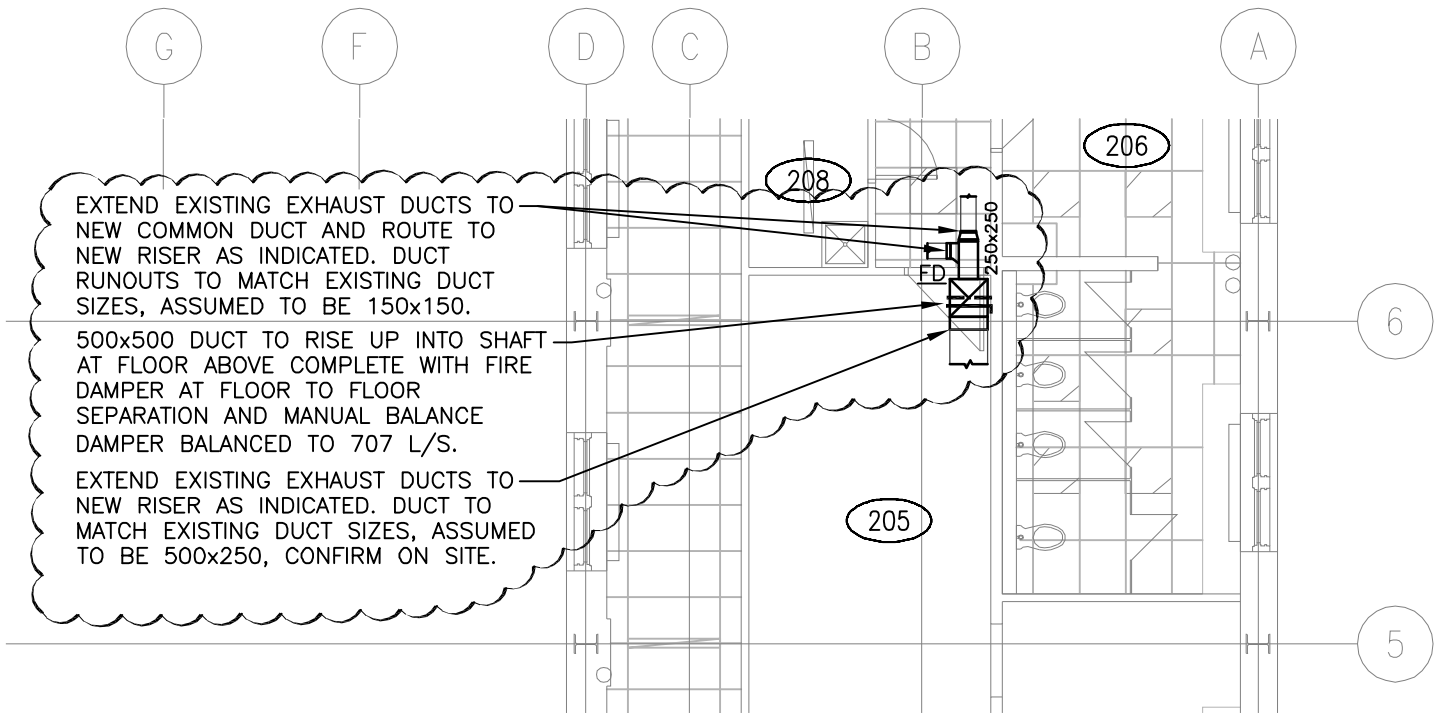
**SHEET TITLE PARTIAL FORTH FLOOR PLAN
VENTILATION REVISIONS**

DRAWING NUMBER

M4-2R1

SCALE 1:100 FILE 05/2013

DATE MAR, 2014 DRAWN JJB



EXTEND EXISTING EXHAUST DUCTS TO NEW COMMON DUCT AND ROUTE TO NEW RISER AS INDICATED. DUCT RUNOUTS TO MATCH EXISTING DUCT SIZES, ASSUMED TO BE 150x150.
 500x500 DUCT TO RISE UP INTO SHAFT AT FLOOR ABOVE COMPLETE WITH FIRE DAMPER AT FLOOR TO FLOOR SEPARATION AND MANUAL BALANCE DAMPER BALANCED TO 707 L/S.
 EXTEND EXISTING EXHAUST DUCTS TO NEW RISER AS INDICATED. DUCT TO MATCH EXISTING DUCT SIZES, ASSUMED TO BE 500x250, CONFIRM ON SITE.



HDA ENGINEERING LTD.
 Mechanical Engineering Consultants

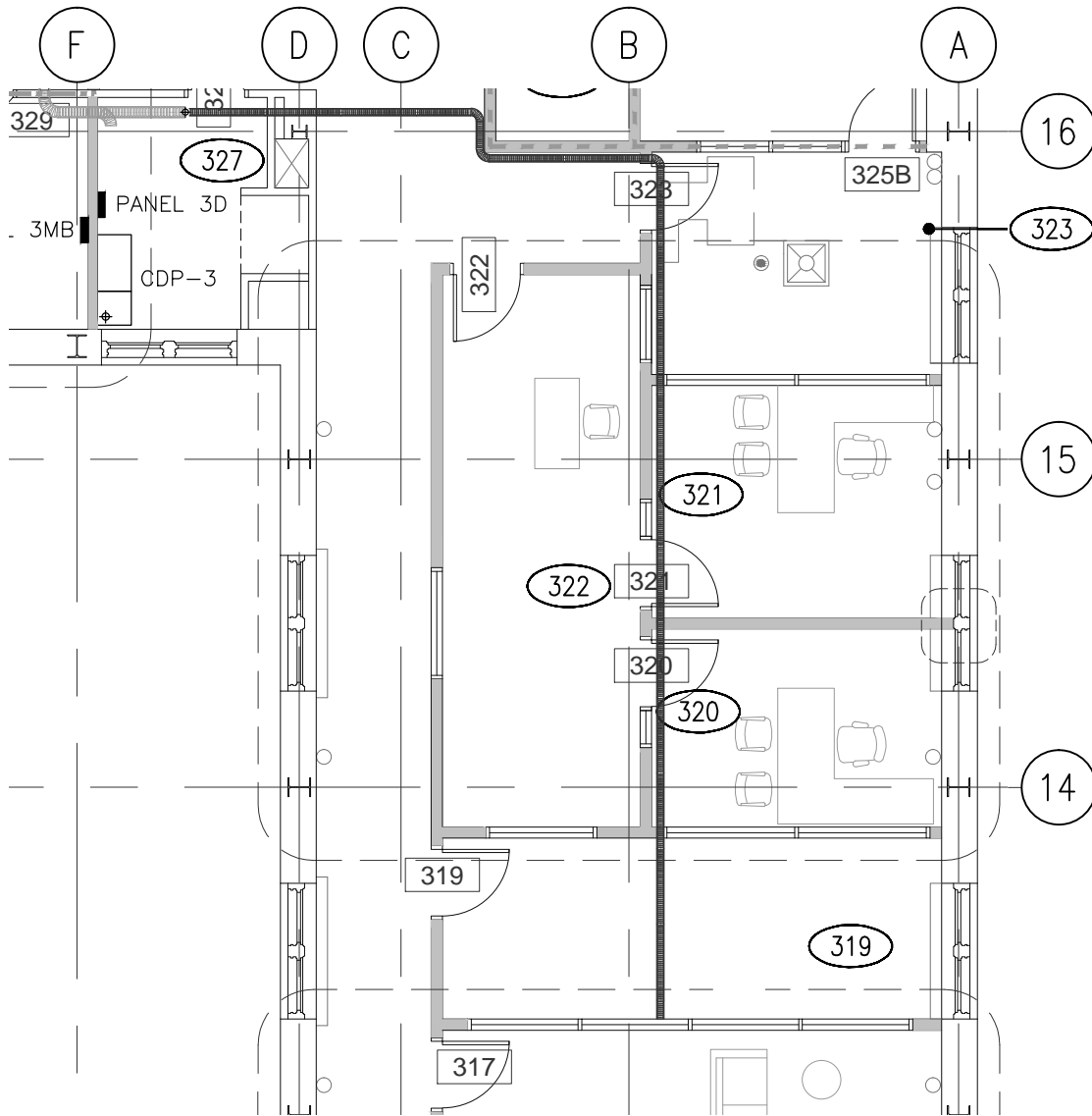
1580 Angus Street Regina, Saskatchewan S4T 1Z1
 P: 306-525-9815 F: 306-525-6369 E: hda@hdaeng.com

PROJECT **SHARED LEARNING FACILITY**
REGINA, SK

SHEET TITLE **PARTIAL SECOND FLOOR PLAN**
VENTILATION REVISIONS

DRAWING NUMBER
M4-4R1

SCALE **1:100** FILE **05/2013**
 DATE **MAR, 2014** DRAWN **JJB**



NORTH

1
E3.2R2

FOURTH FLOOR PARTIAL
POWER/SYSTEMS PLAN

1:100



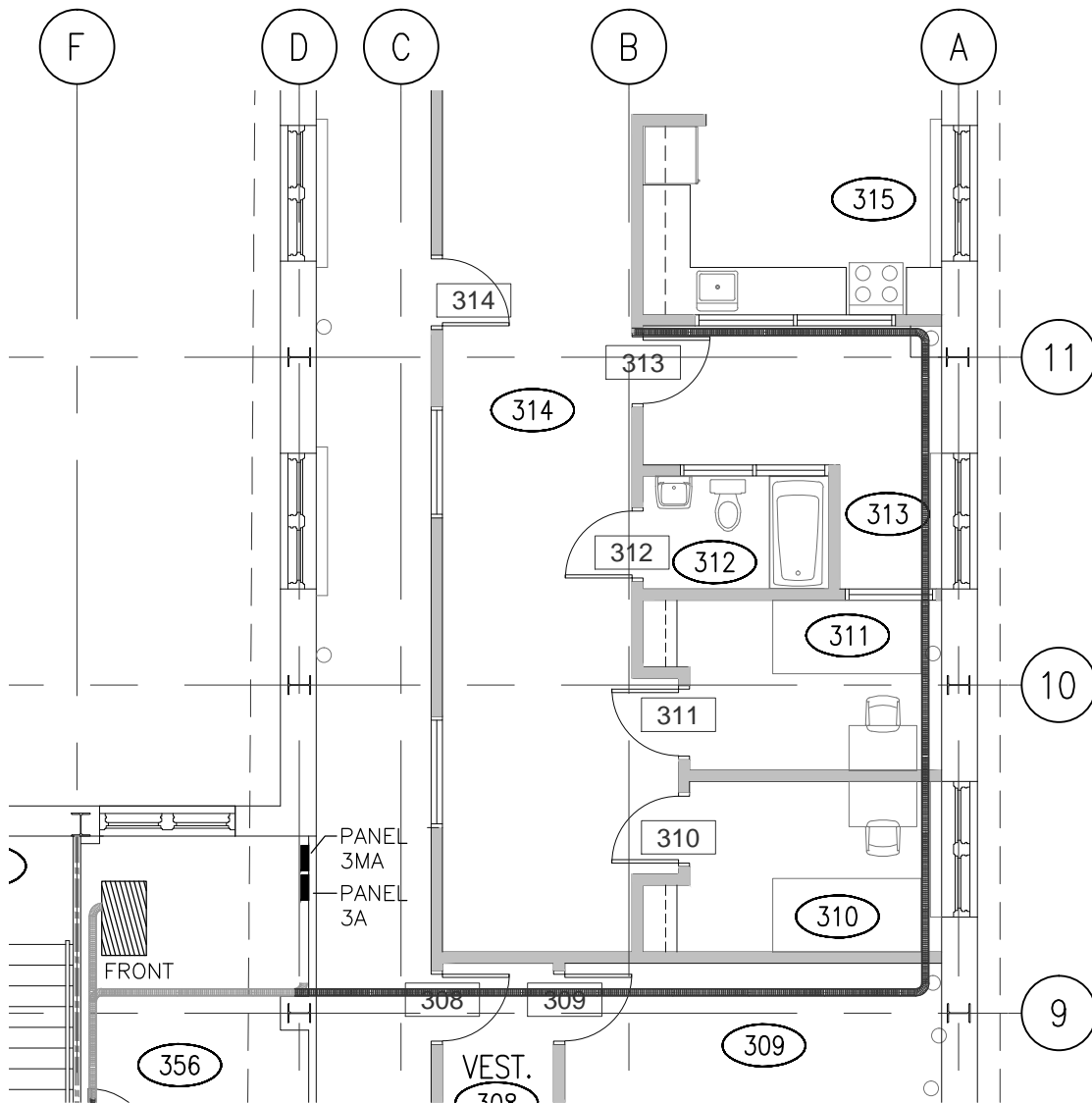
Ritenburg & Associates Ltd.
Consulting Electrical Engineers

#200-2222 Albert Street, Regina, SK S4P 2V2
P: (306) 569-1303 F: (306) 566-1307
Email: ral@ritenburg.com

RCMP B-BLOCK
ELECTRICAL REVISION

File: 12291
Date: 2014-03-24
Approved: SBK
Drawn: BDK

Drawing:
E3.2R2



NORTH

1
E3.2R3

FOURTH FLOOR PARTIAL POWER/SYSTEMS PLAN

1:100



**Ritenburg &
Associates Ltd.**
Consulting Electrical Engineers

#200-2222 Albert Street, Regina, SK S4P 2V2
P: (306) 569-1303 F: (306) 569-1307
Email: rai@ritenburg.com

RCMP B-BLOCK
ELECTRICAL REVISION

File: 12291
Date: 2014-03-24
Approved: SBK
Drawn: BDK

Drawing:
E3.2R3