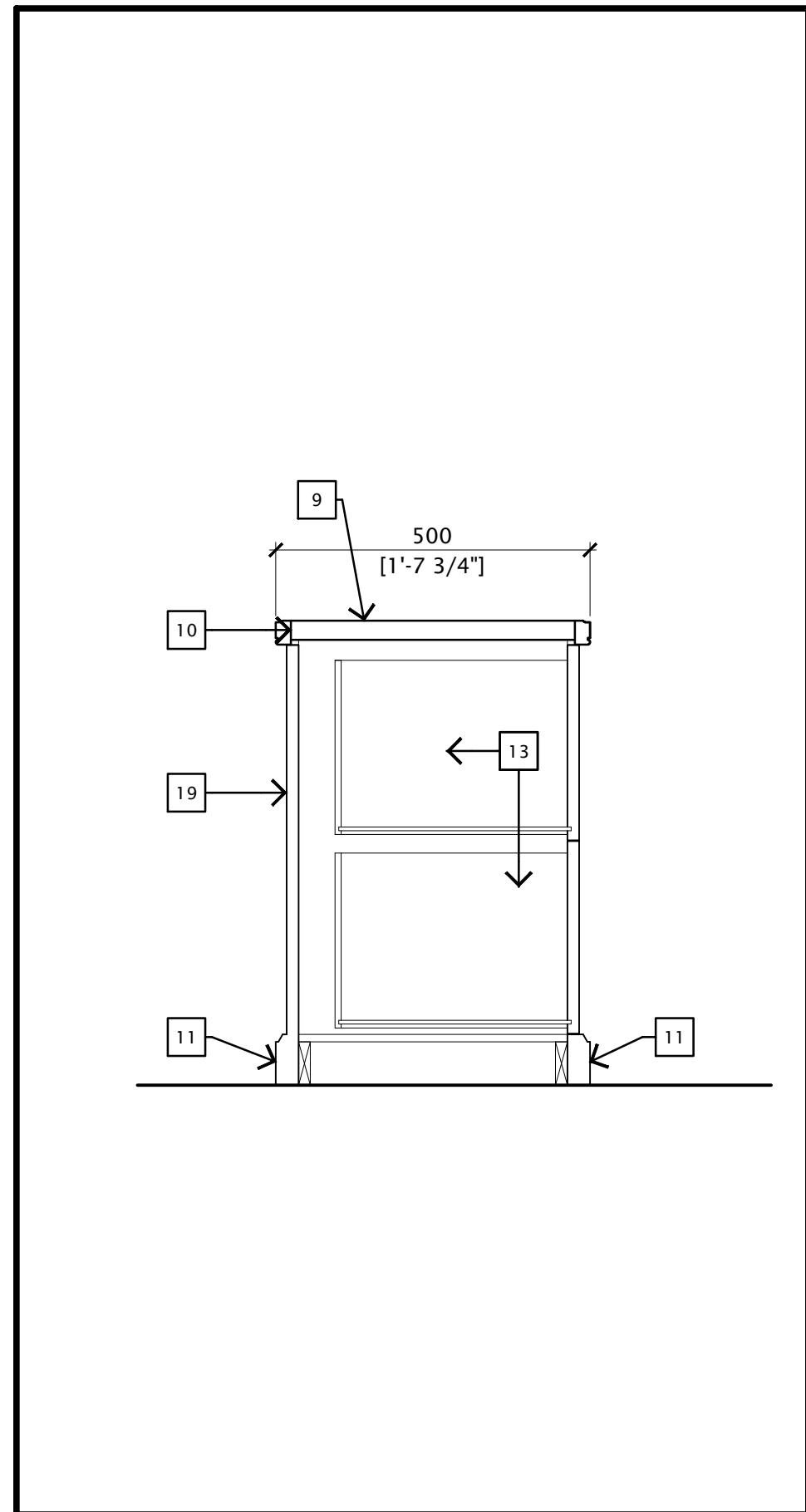
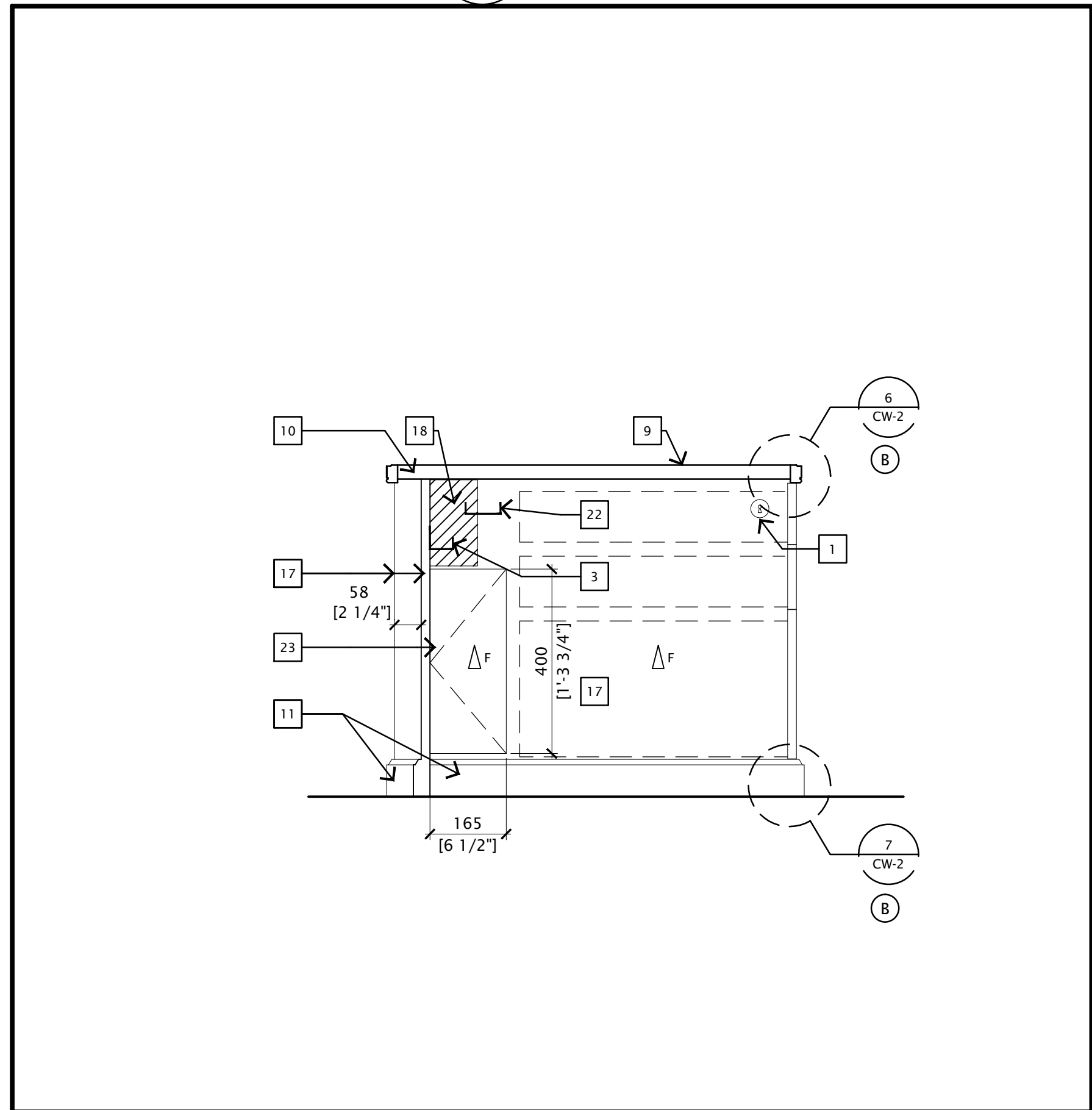


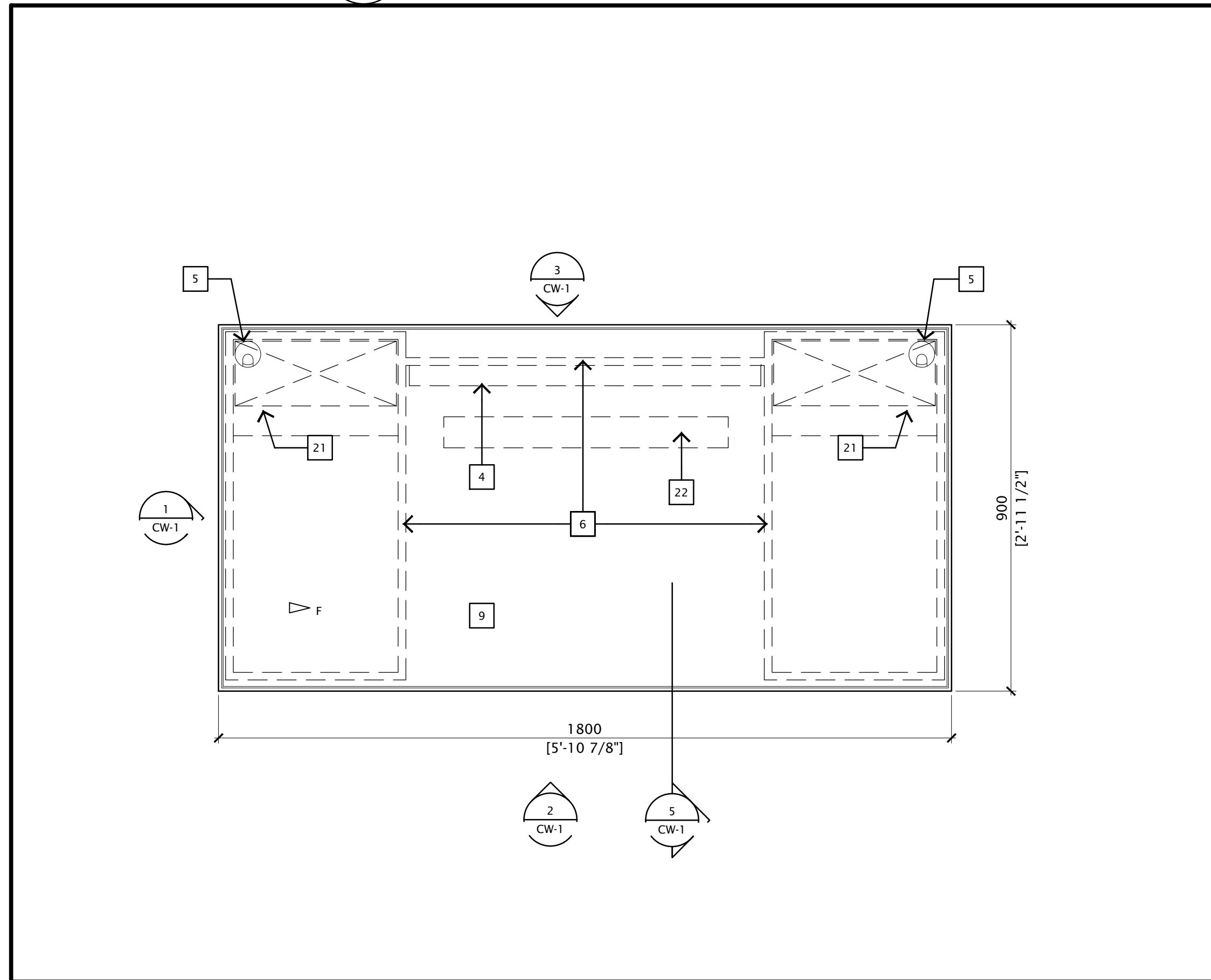
7 MP CREDENZA FRONT ELEVATION
CW-3 1:10



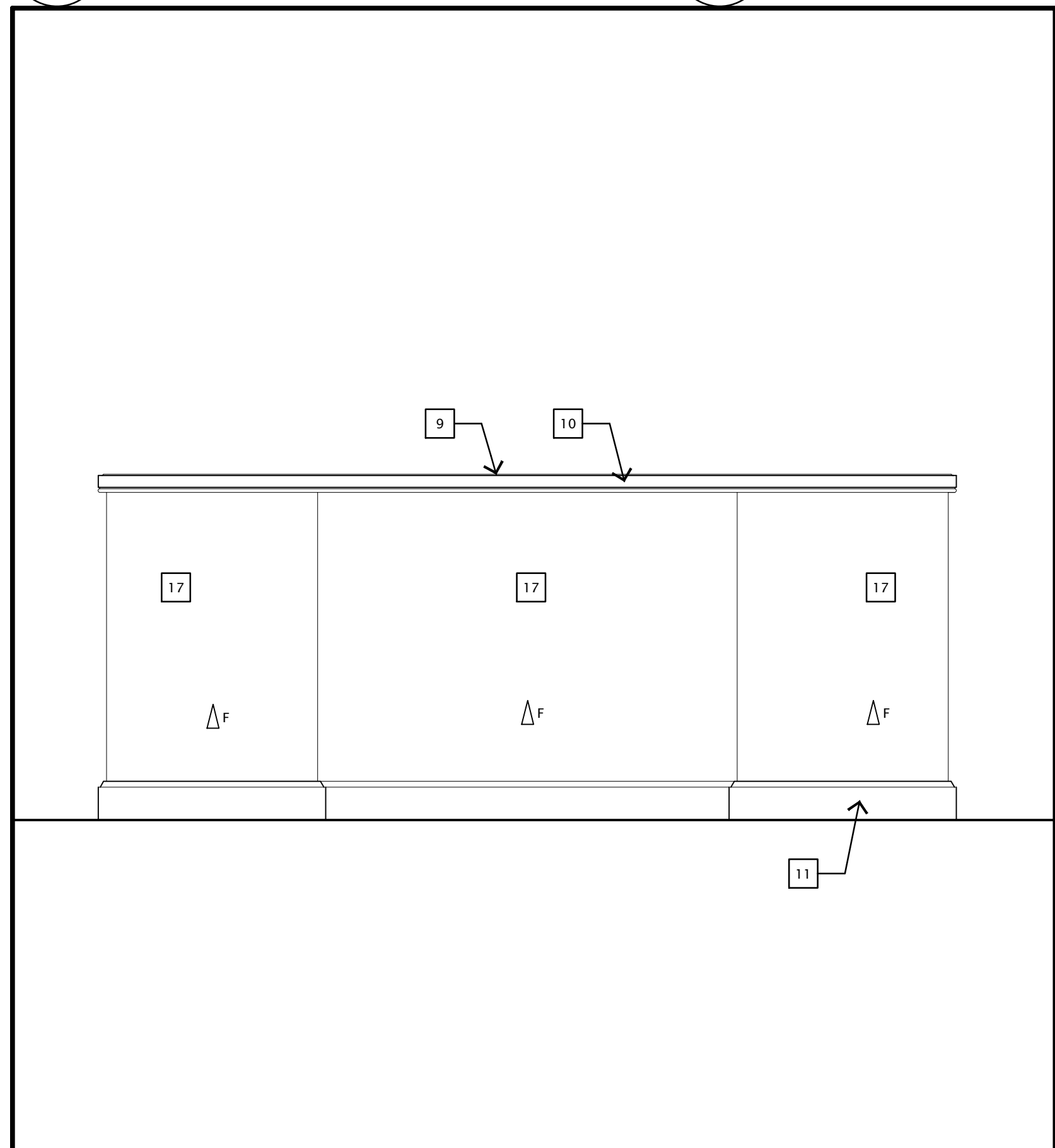
6 MP CREDENZA SECTION
CW-3 1:10



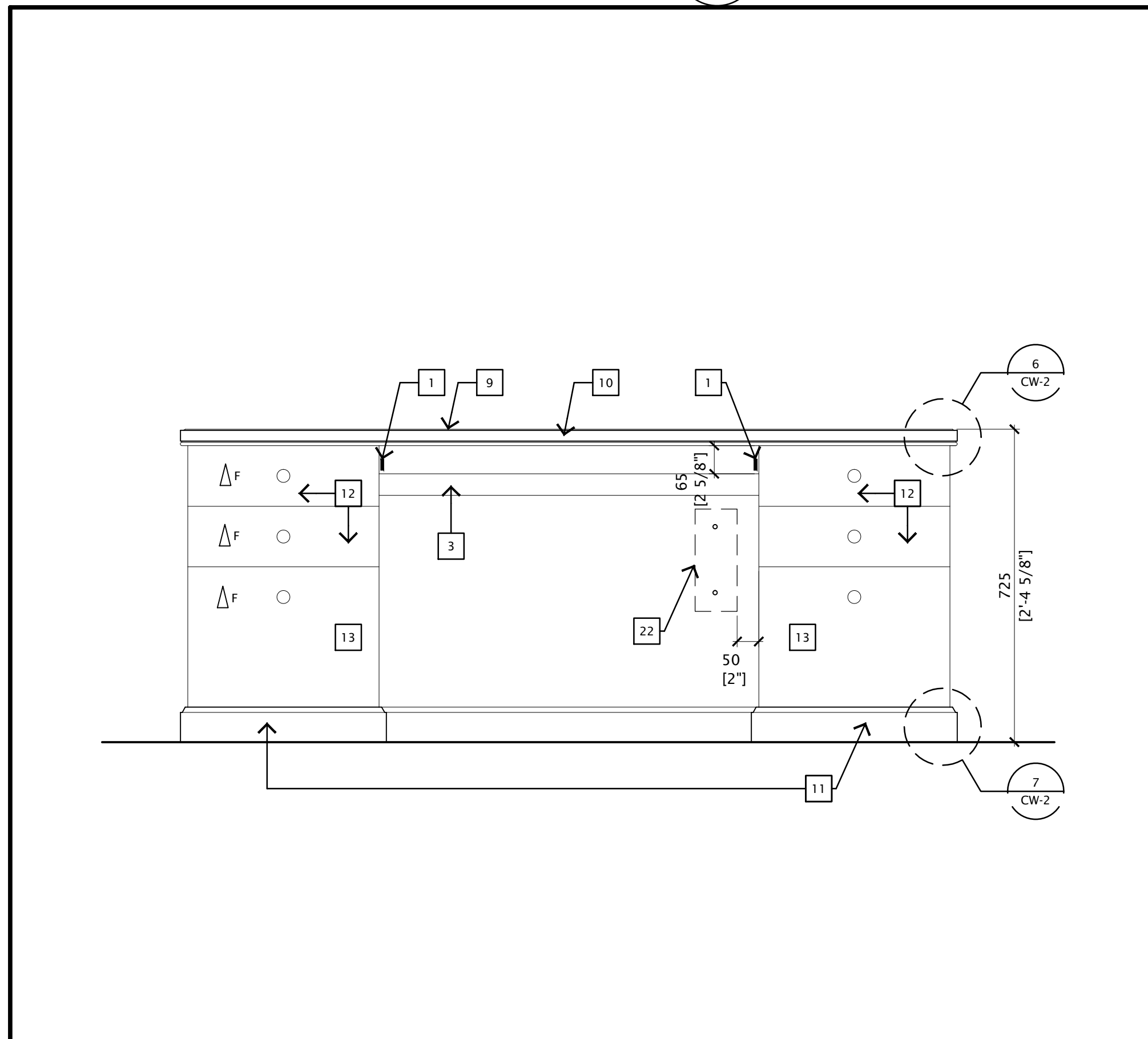
5 MP DESK SECTION
CW-1 1:10



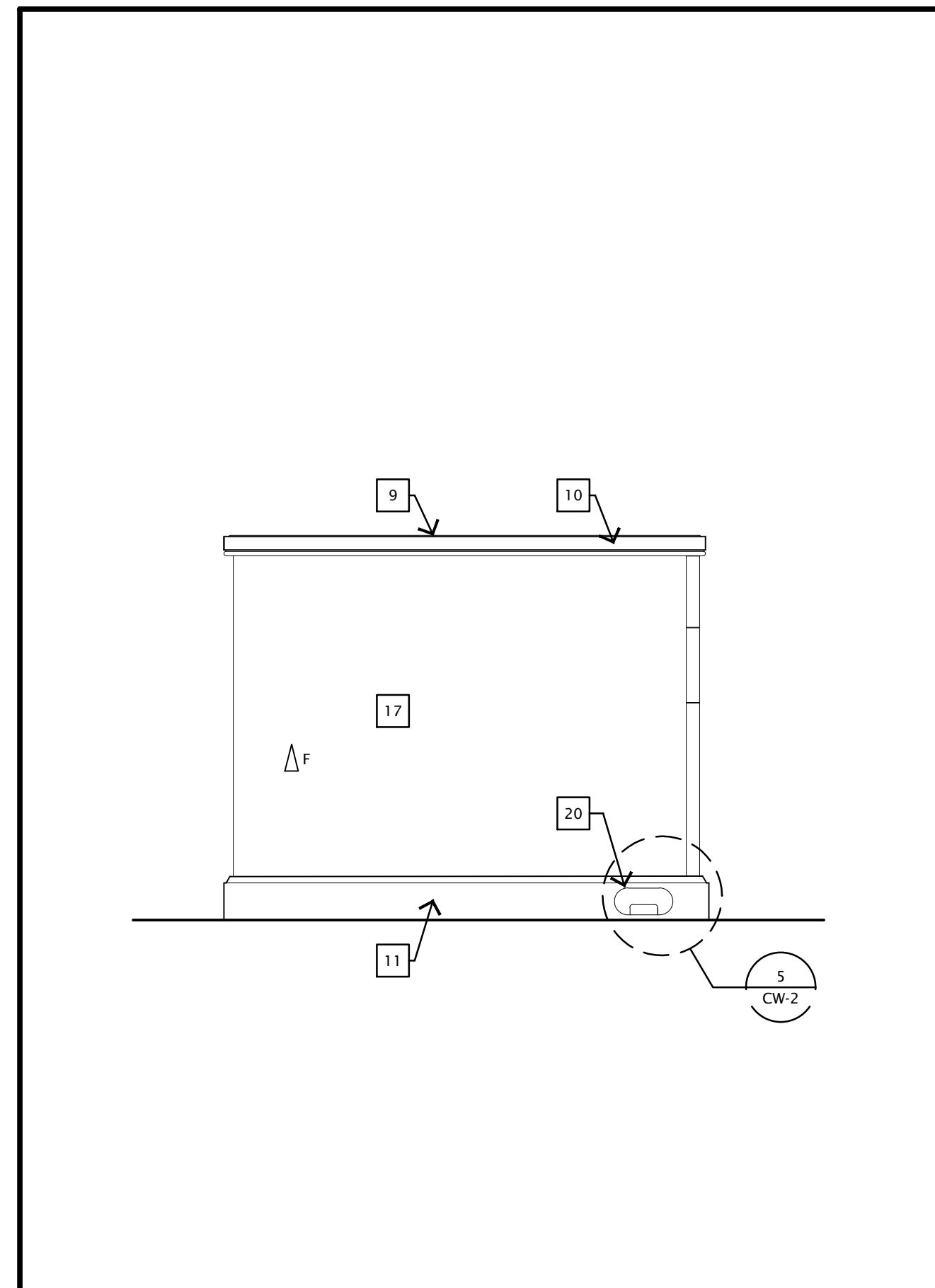
4 MP DESK OVERALL PLAN
CW-1 1:10



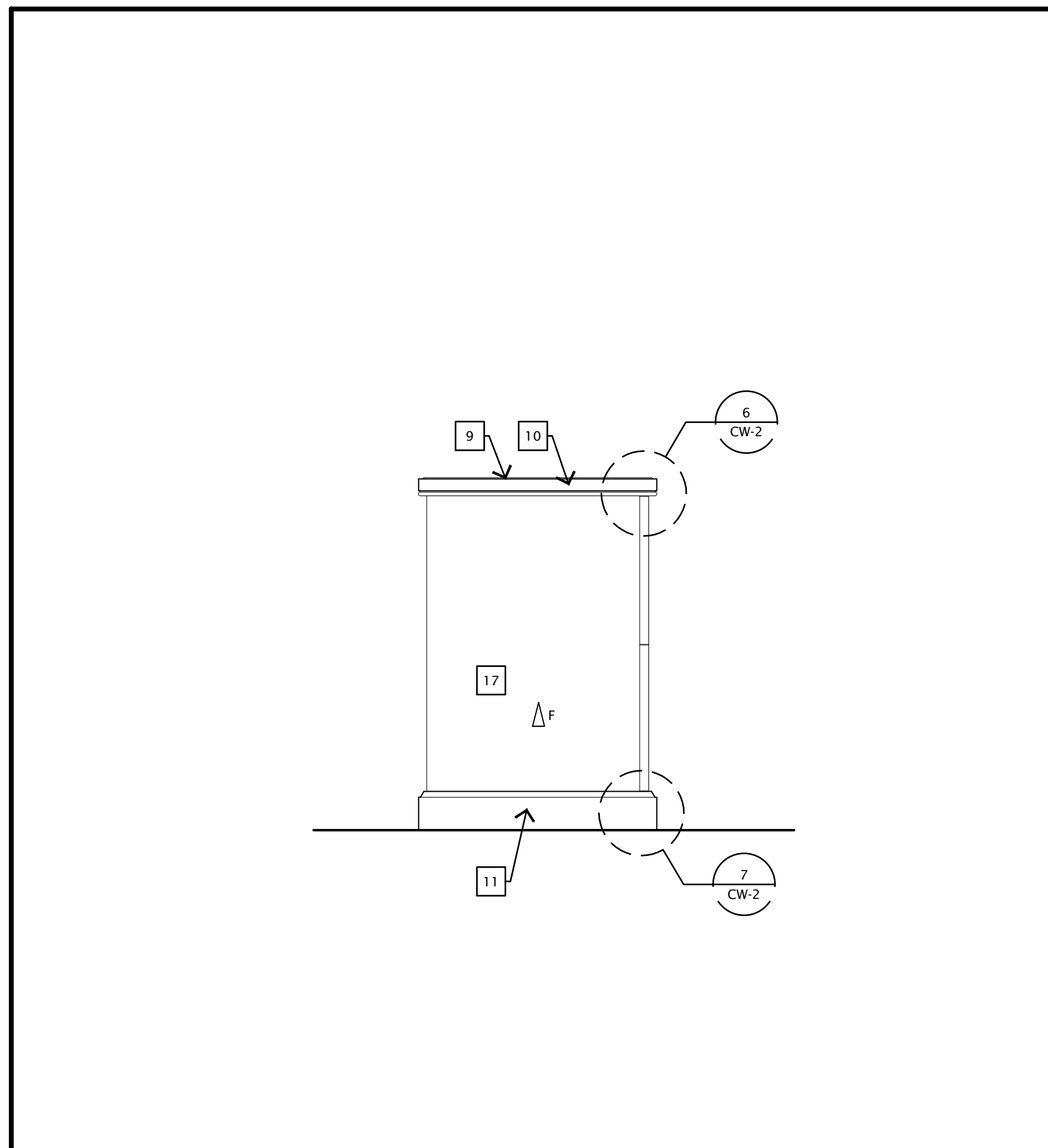
3 MP DESK BACK ELEVATION
CW-1 1:10



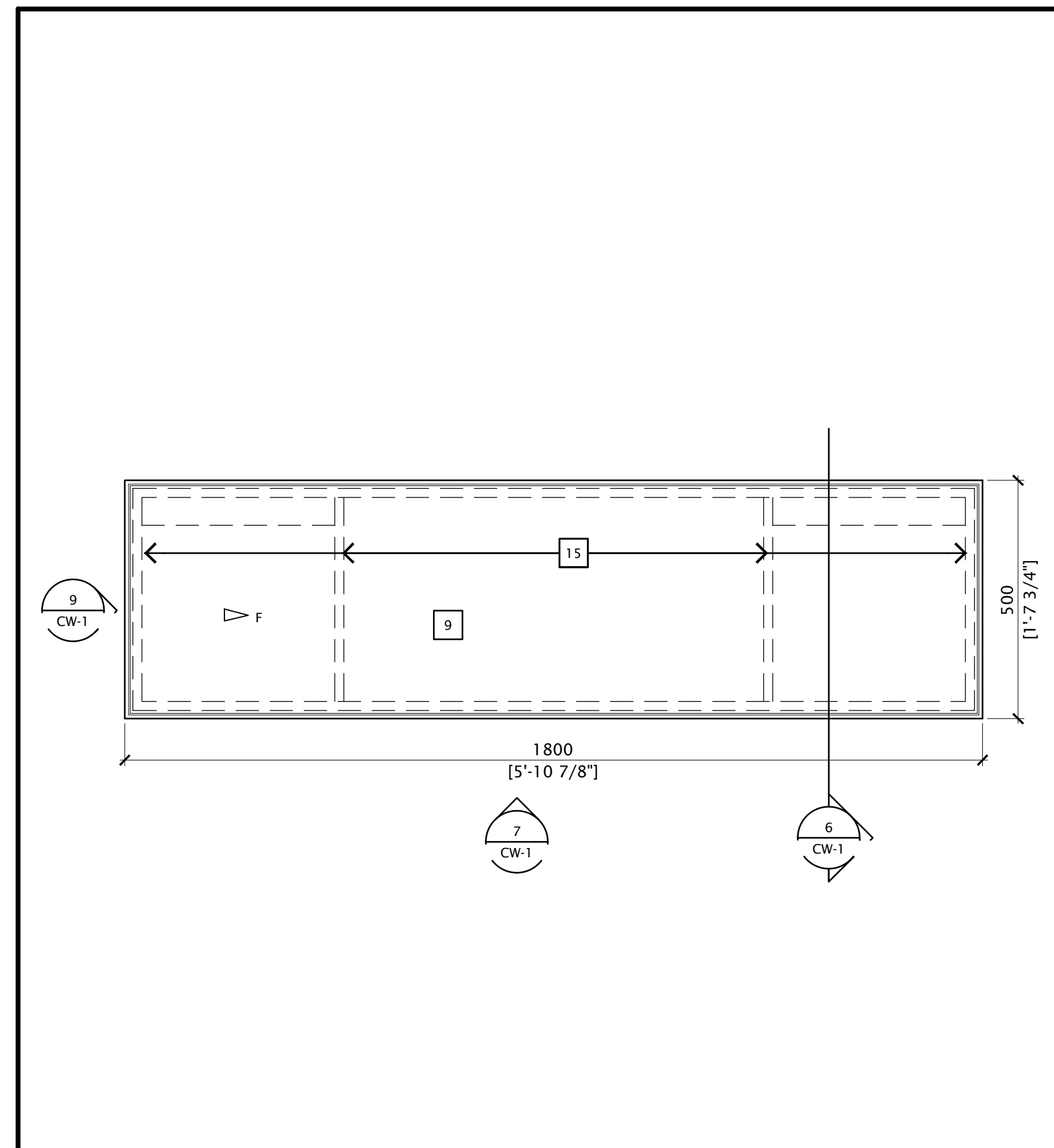
2 MP DESK FRONT ELEVATION
CW-1 1:10



1 MP DESK SIDE ELEVATION
CW-1 1:10



9 MP CREDENZA SIDE ELEVATION
CW-3 1:10



8 MP CREDENZA OVERALL PLAN
CW-3 1:10

DRAWING NOTES

- KEYED LOCK TO MATCH KNOBS, TO SECURE ALL DRAWERS IN PEDESTAL, SIMULTANEOUSLY.
- KNOB AS SPECIFIED IN RFP, TYPICAL FOR ALL DRAWERS
- CABLE MANAGEMENT CHANNEL, FINISH AS SPECIFIED
- OUTLINE OF CABLE MANAGEMENT CHANNEL BELOW TOP
- CABLE GROMMET WITH REUSABLE COVER, AS SPECIFIED
- OUTLINE OF PEDESTALS AND MODESTY PANEL BELOW TOP
- KNOB AS SPECIFIED IN RFP, TYPICAL FOR ALL DOORS
- RESERVED
- WALNUT VENEERED TOP
- SOLID WALNUT EDGE
- SOLID WALNUT BASE
- BOX DRAWER WITH A MOVEABLE PENCIL TRAY IN TOP DRAWER OF EACH PEDESTAL. WALNUT VENEERED DRAWER FRONT
- FILE DRAWER WITH A HANGING-FILE RAIL SYSTEM. WALNUT VENEERED DRAWER FRONT
- 406mm (16") DEEP WALNUT VENEERED SHELVES, HEIGHT ADJUSTABLE ON 32mm (1 1/4") INCREMENTS
- OUTLINE OF CABINET BODY AND CABLES BELOW TOP
- WALNUT VENEERED DOOR
- WALNUT VENEERED PANEL
- OPENING IN SIDE PANELS ON BOTH SIDES OF KNEE SPACE TO PROVIDE ACCESS FOR CABLE INSTALLATION THROUGH GROMMETS IN UNIT TOP
- WALNUT VENEERED BACK PANEL
- LARGE CABLE GROMMET WITH REUSABLE COVER, AS SPECIFIED, PROVIDED AT BOTH ENDS OF UNIT
- OPENING IN PEDESTAL BOTTOM TO PROVIDE CABLE ROUTE THROUGH UNIT
- MILWORK CONTRACTOR TO PREP CABLE TO RECEIVE SURFACE MOUNT POWER BAR (2 SIDES). CONTRACTOR TO VERIFY MOUNTING ASSEMBLY
- WALNUT VENEERED DOOR, HINGED AT RECESSED MODESTY PANEL, NO KNOB
- KEYED LOCK TO MATCH KNOBS, FINISH AS SPECIFIED

WRITTEN FURNITURE SPECIFICATIONS TO TAKE PRECEDENCE OVER DRAWING NOTES

GENERAL NOTES

- REFER TO SPECIFICATIONS FOR FINISHING OF ALL WALNUT VENER SURFACES.
- SAMPLE REQUIRED FOR RFP