

B1-18 Stope void backfilling


Completion Plan

Revision 1 – February 7, 2014

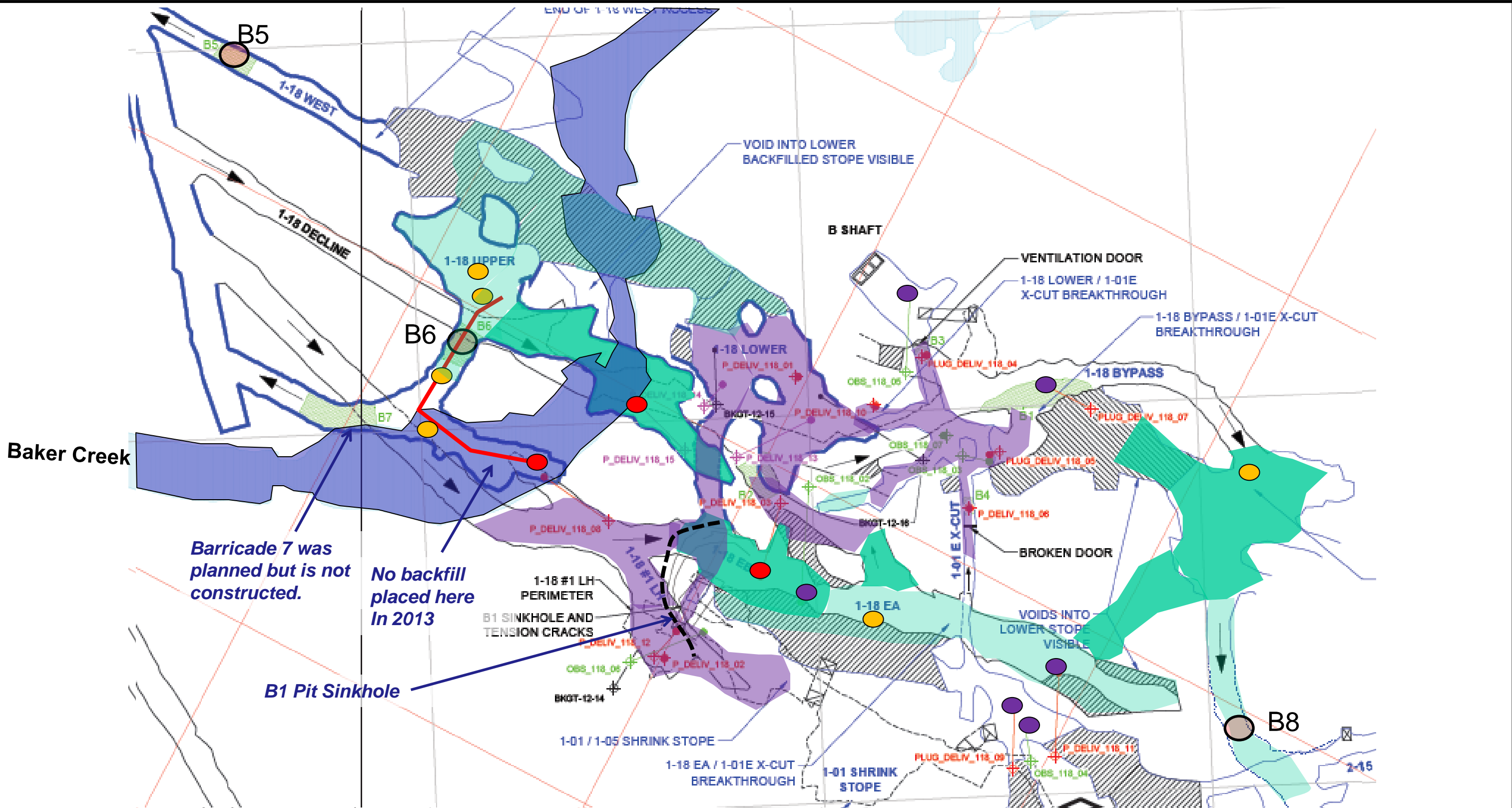


Note: Level plans shown are for illustrative purposes only, Use full size level plans and 3D digital model for planning purposes.

NOT FOR CONSTRUCTION

PROJECT		PWGSC			
		GIANT MINE INTERIM U/G STABILIZATION PROJECT YELLOWKNIFE, NWT			
TITLE		B1-18 Stope Complex Mitigation Completion Plan			
PROJECT No.		13-1426-0010	PHASE No.		5000
DESIGN	FM	05JAN14	SCALE	N.T.S.	REV. 1
CADD	ALP	23JAN14			
CHECK	DTK	24JAN14			
REVIEW	DTK	24JAN14			
		Page 1			

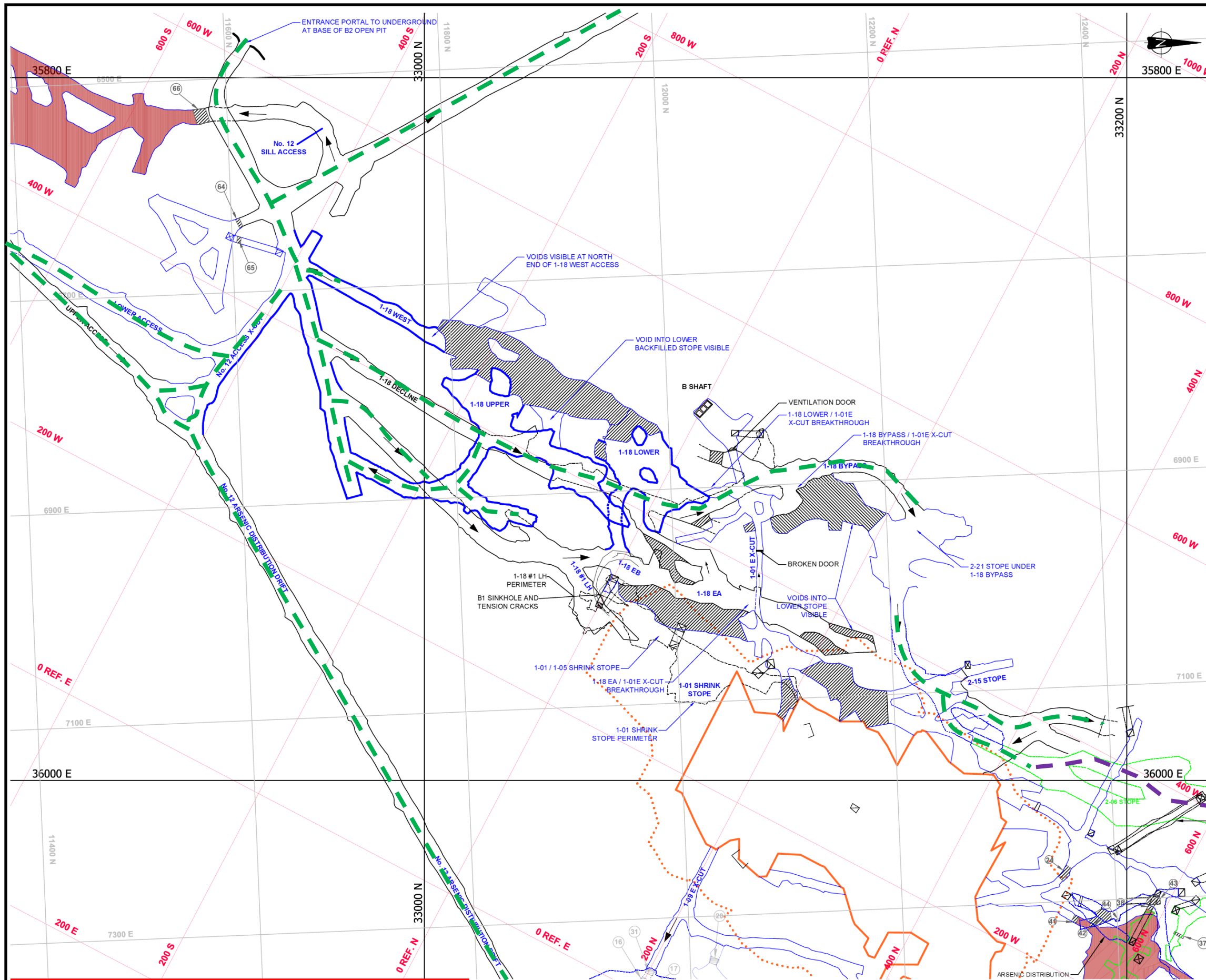
FILE C:\Agulider_2013\GIS\Map\B1-18 Stope\B1-18 Stope.mxd



PROJECT		PWGSC		
GIANT MINE INTERIM U/G STABILIZATION PROJECT YELLOWKNIFE, NWT				
TITLE		B1-18 Stope Fill Fence, Monitoring, and Backfill Status Dec 13, 2013		
PROJECT No.	13-1426-0010	PHASE No.	5000	
DESIGN	FM	05JAN14	SCALE	N.T.S.
CADD	ALP	23JAN14	REV. A	
CHECK	DTK	24JAN14	Page 2	
REVIEW	DTK	24JAN14		



File: C:\Active\2013\1426\13-1426-0010 Giant Mining Support Services\7000 - MSS-007 2014 Procure\Doc070_B3-10 Mit\03_Conceptual Mitigation Plan



Underground Development Access - Legend

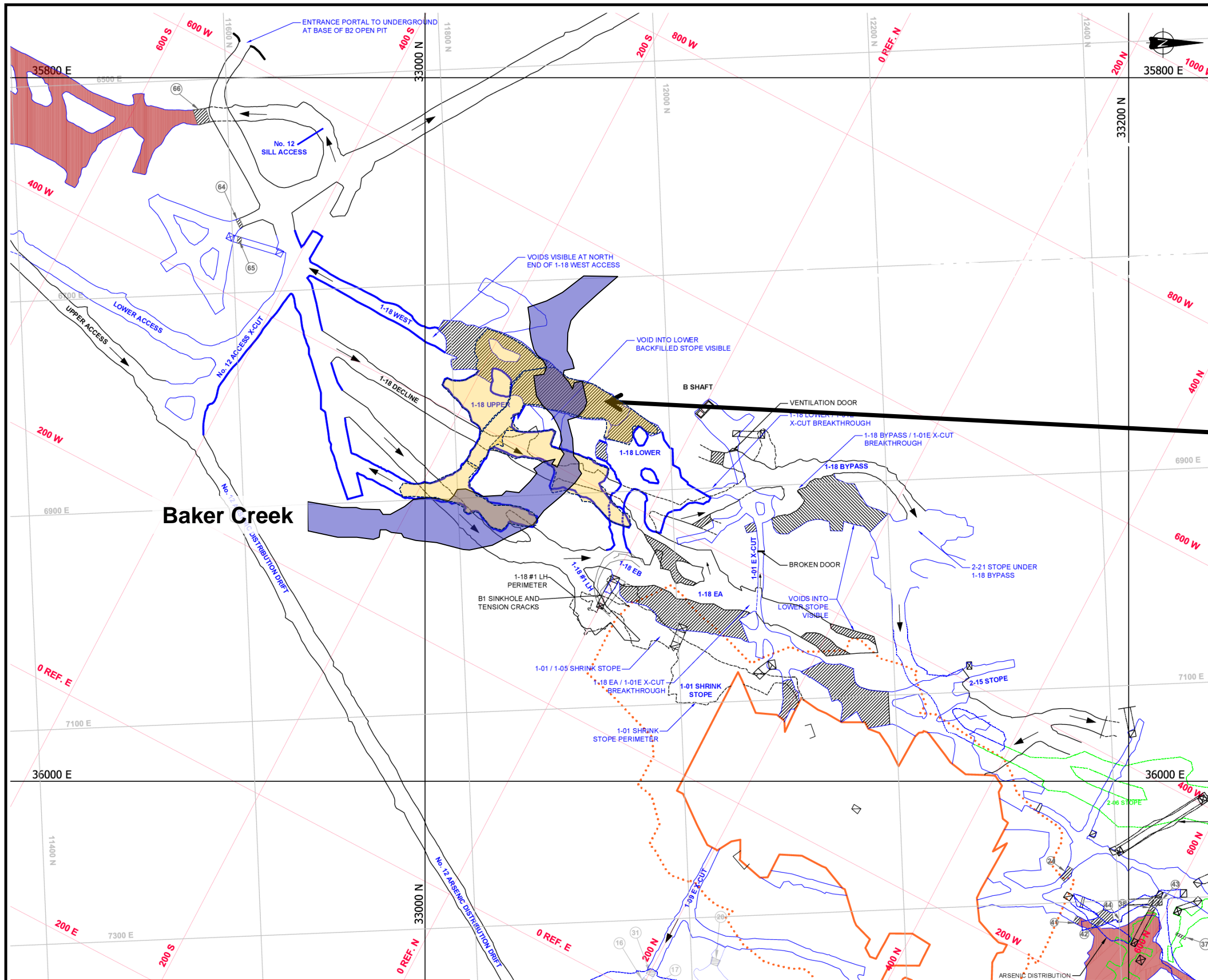
- - - DCNJV main travel way / work areas
- - - Not regularly travelled by DCNJV. Discuss entry procedures with DCNJV
- - - Hazard(s) present. Discuss entry procedures with DCNJV
- - - Major hazard(s) present. Discuss entry procedures with DCNJV

NOT FOR CONSTRUCTION

PROJECT		PWGSC GIANT MINE INTERIM U/G STABILIZATION PROJECT YELLOWKNIFE, NWT		
TITLE		B3-06 Stope Underground Access – 1st Level		
PROJECT No. 13-1426-0010		PHASE No. 5000		
DESIGN	FM	05JAN14	SCALE	N.T.S. REV. 1
CADD	ALP	23JAN14		
CHECK	DTK	24JAN14		
REVIEW	DTK	24JAN14	Page 3	



File: C:\Active\2013\1426\13-1426-0010 Giant Mining Support Services\7000 - MSS-007 2014 Procure\Doc070_B3-10 Mit\03_Conceptual Mitigation Plan



Target Area to be Backfilled

B1-18 backfilling was initiated in 2013.

Most of the target voids were filled.

Areas under Baker Creek still need to be filled.

Remaining estimated void to be filled is represented by the areas shaded in yellow.

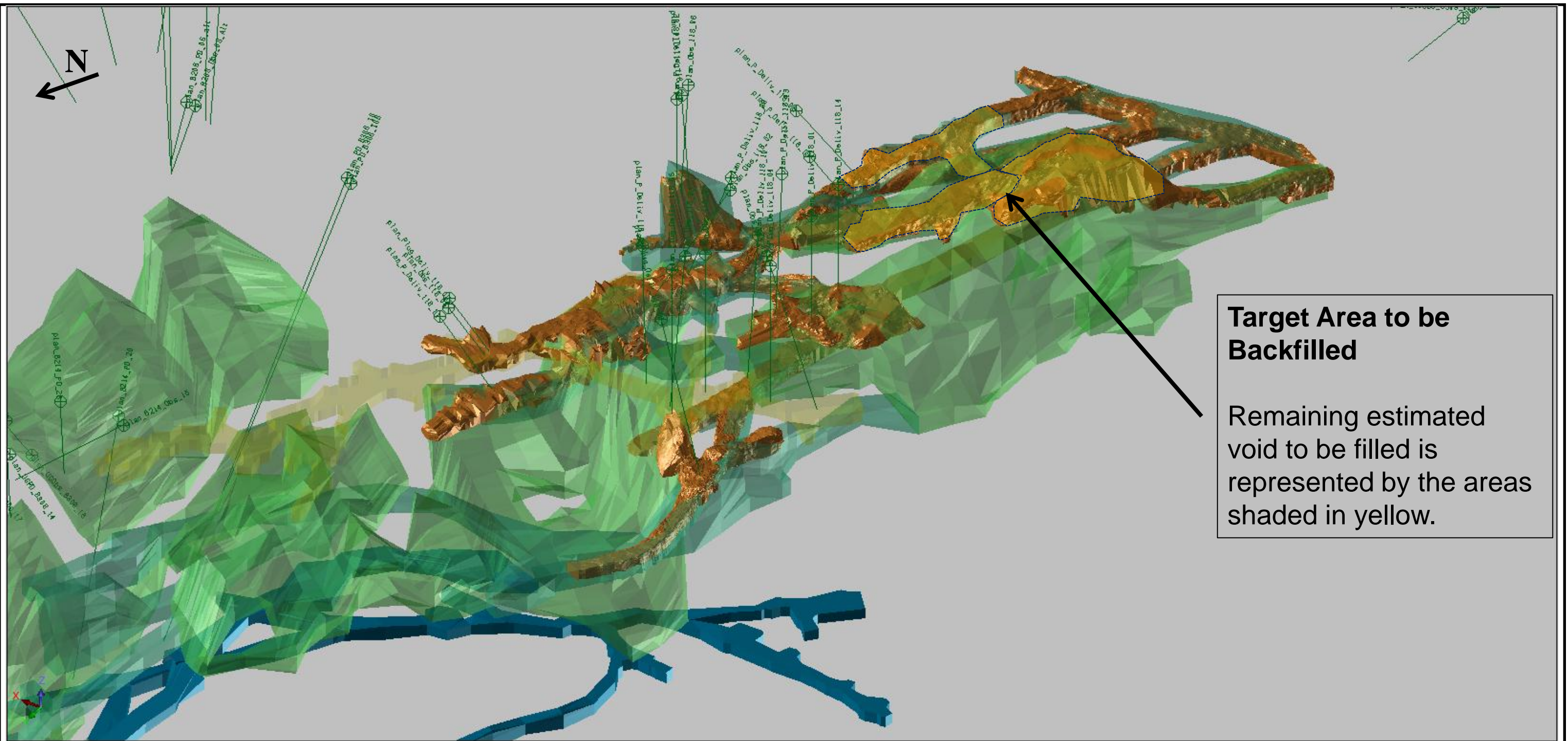
NOT FOR CONSTRUCTION

PROJECT PWGSC
GIANT MINE INTERIM U/G STABILIZATION PROJECT
YELLOWKNIFE, NWT

TITLE
B3-06 Stope
Void Volumes and Exit Points – 1st Level



PROJECT No.	13-1426-0010	PHASE No.	5000
DESIGN	FM 05JAN14	SCALE	N.T.S. REV. 1
CADD	ALP 23JAN14		
CHECK	DTK 24JAN14		
REVIEW	DTK 24JAN14		



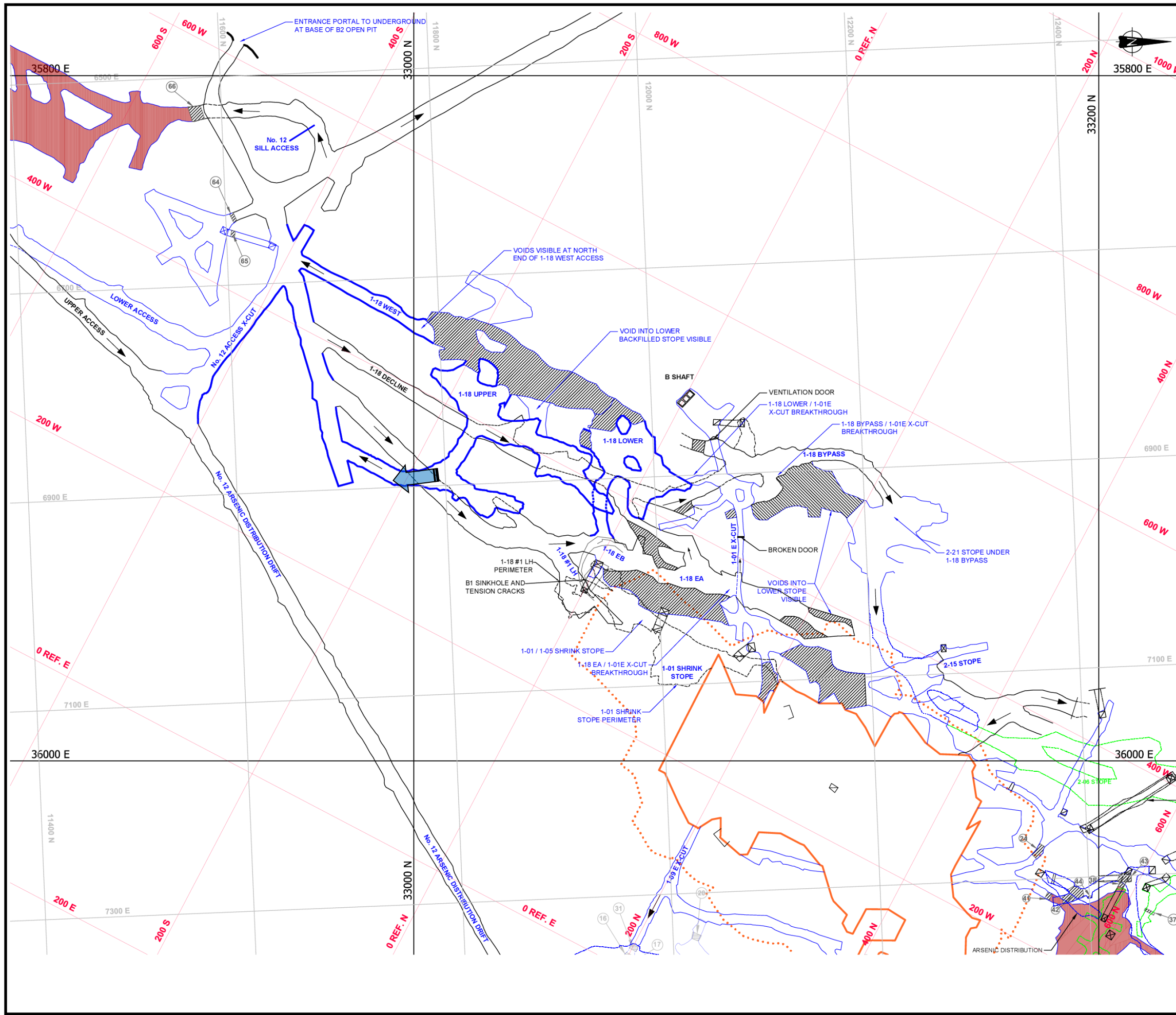
Isometric view of 3D Model – Looking North-Northwest

B1-18 remaining void volume: approximately 2,000 m³


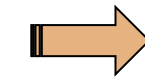

NOT FOR CONSTRUCTION


PROJECT		PWGSC GIANT MINE INTERIM U/G STABILIZATION PROJECT YELLOWKNIFE, NWT		
TITLE		B1-18 Stope Void Volume		
PROJECT No.		13-1426-0010	PHASE No. 5000	
DESIGN	FM	05JAN14	SCALE	N.T.S. REV. 1
CADD	ALP	23JAN14	Page 5	
CHECK	DTK	24JAN14		
REVIEW	DTK	24JAN14		

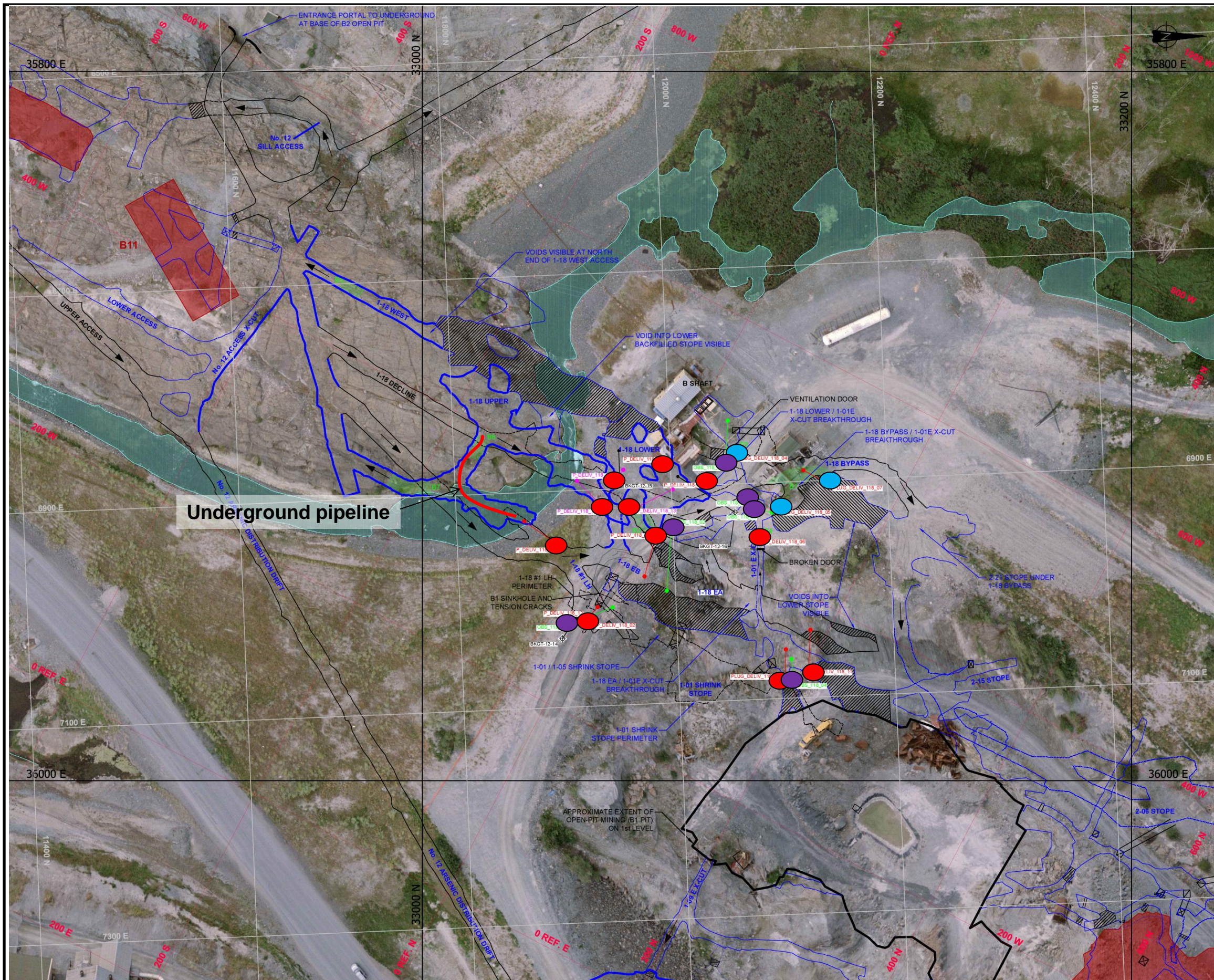




Mandatory Blockages and Fill Volume Containment Points - Legend

-  Mandatory paste blockage point
-  Volume constraint point – man-entry
-  Volume constraint point – no entry

PROJECT		PWGSC GIANT MINE INTERIM U/G STABILIZATION PROJECT YELLOWKNIFE, NWT		
TITLE		B1-18 Stope Complex Mandatory Blockages and Fill Volume Containment Points – 1 st Level		
PROJECT No. 13-1426-0010		PHASE No. 5000		
DESIGN	FM	05JAN14	SCALE	N.T.S. REV. 1
CADD	ALP	23JAN14		
CHECK	DTK	24JAN14		
REVIEW	DTK	24JAN14		
		Page 7		



Surface and Underground Borehole Collar - Legend

- Sub-vertical high slump bulk fill delivery borehole
- Sub-vertical low slump fill or foam delivery borehole
- Observation / breather / contingency high slump bulk fill delivery borehole
- Borehole drilled from underground

Note: Some boreholes are no longer useable as they are filled with paste – see Page 8

Underground pipeline

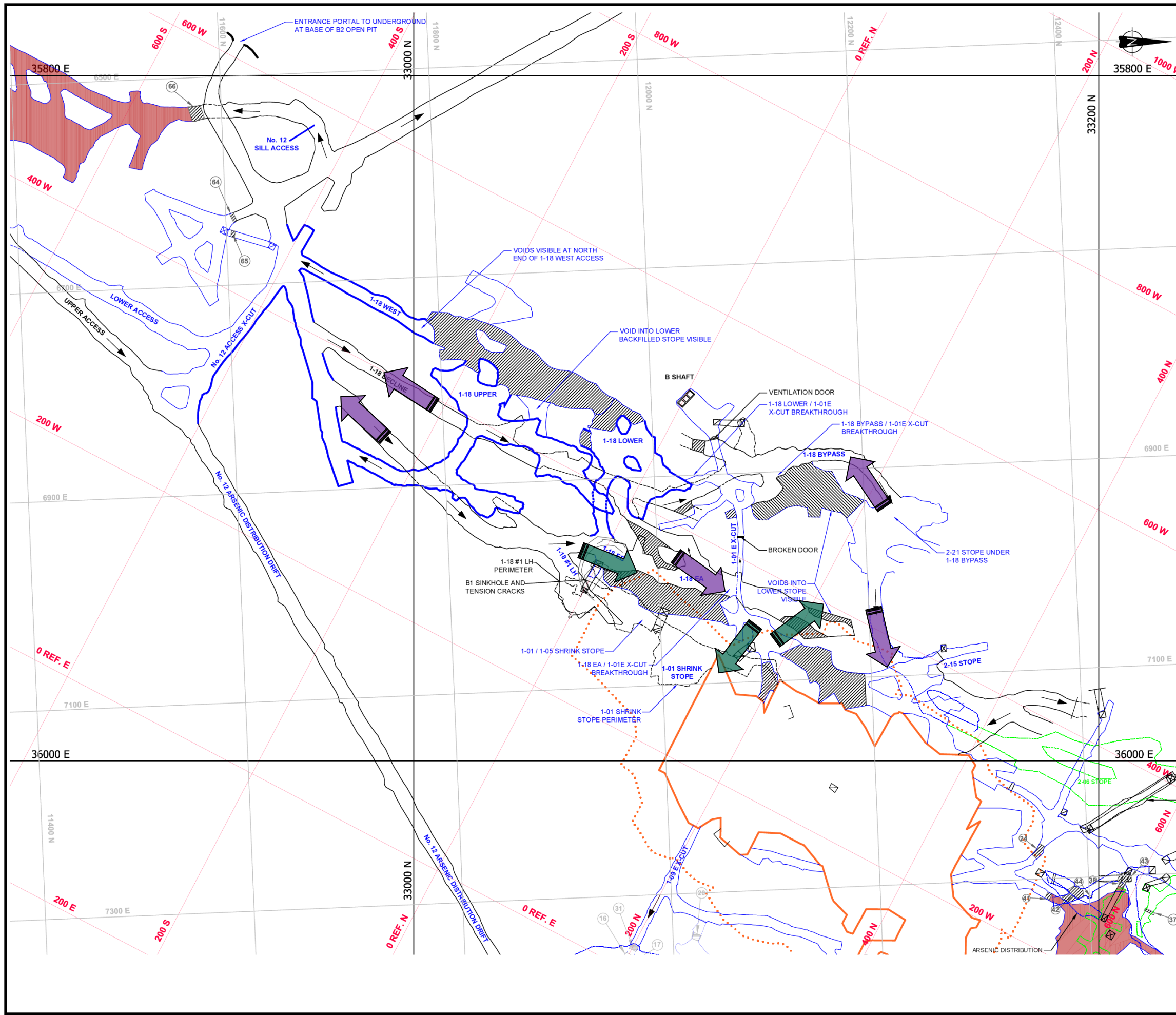
NOT FOR CONSTRUCTION

PROJECT **PWGSC
GIANT MINE INTERIM U/G STABILIZATION PROJECT
YELLOWKNIFE, NWT**



TITLE **B1-18 Stope Complex
Surface Borehole Collars**

PROJECT No. 13-1426-0010		PHASE No. 5000	
DESIGN	FM	05JAN14	SCALE N.T.S.
CADD	ALP	23JAN14	REV. 1
CHECK	DTK	24JAN14	Page 8
REVIEW	DTK	24JAN14	






Possible Paste Backfill Leakage Points To Be Monitored - Legend

-  Possible paste exit point to be monitored – man-entry
-  Possible paste exit point to be monitored – no entry

Note: These points show areas where paste may flow from the targeted void to be backfilled. These exit points must be monitored. Barricades or a change in paste delivery approach in the targeted void would be required to stop the leak.

PROJECT		PWGSC GIANT MINE INTERIM U/G STABILIZATION PROJECT YELLOWKNIFE, NWT		
TITLE		B1-18 Stope Complex Possible Paste Exit Points To Be Monitored – 1 st Level		
PROJECT No. 13-1426-0010		PHASE No. 5000		
DESIGN	FM	05JAN14	SCALE	N.T.S. REV. 1
CADD	ALP	23JAN14		
CHECK	DTK	24JAN14		
REVIEW	DTK	24JAN14		
		Page 9		