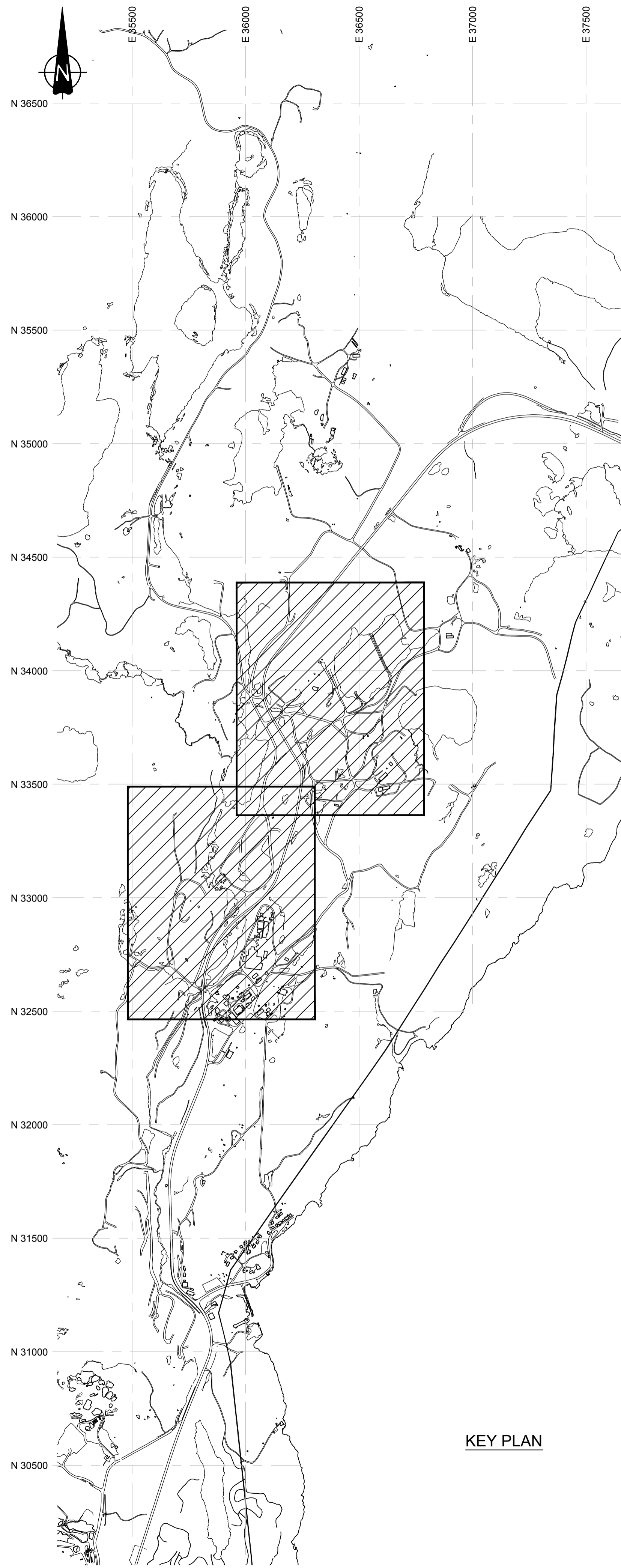


Saved by: Klassen, Tyler

Plotted on: February 7, 2014

CADD FILE LOCN: N:\CLIENT\GIANT MINE\99\_PROJECTS\13-1426-0010\PHASE 1000\1103\DOC.#080\02\_PRODUCTION\FOR TENDER\RPT-080\_CFO0-R1 - KEY PLAN.DWG



KEY PLAN

### LIST OF DRAWINGS

DRAWING NUMBER	REVISION NUMBER	TITLE OF DRAWING
RPT_080_CFO0-R1	1	KEY PLAN
RPT_080_CFO1-R1	1	UG LEVEL PLAN - OVERALL B1 PIT AREA - 1ST LEVEL LAYOUT
RPT_080_CFO2-R1	1	UG LEVEL PLAN - OVERALL B1 PIT AREA - 2ND LEVEL LAYOUT
RPT_080_CFO3-R1	1	UG LEVEL PLAN - OVERALL B1 PIT AREA - 3RD LEVEL LAYOUT
RPT_080_CFO4-R1	1	UG LEVEL PLAN - OVERALL B1 PIT AREA - 4TH LEVEL LAYOUT
RPT_080_CFO5-R1	1	UG LEVEL PLAN - OVERALL B3 PIT AREA - ALL LEVELS

**PRELIMINARY**  
NOT FOR CONSTRUCTION



**DO NOT SCALE DRAWINGS**

Revision/	Description/Description	Date/Date
1	ISSUED FOR TENDER WITH DOC #080	2014-02-12
0	ISSUED FOR TENDER WITH DOC #080	2014-01-31
B	ISSUED FOR TENDER WITH DOC #080	2014-01-24
A	ISSUED FOR TENDER WITH DOC #080	2013-12-06

Client/client

**PUBLIC WORKS  
GOVERNMENT SERVICES  
CANADA**

Project title/Titre du projet  
**GIANT MINE  
REMEDATION PROJECT  
YELLOWKNIFE, N.W.T.**

**UNDERGROUND**

Approved by/Approuvé par  
DTK

Designed by/Concept par  
CY

Drawn by/Dessiné par  
TAK

PWGC Project Manager/Administrateur de Projets TPSCG  
DAVE COLBOURNE

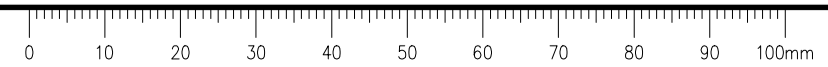
PWGC, Architectural and Engineering Resources Manager/  
Ressources Architectural et de Directeur d'ingénierie, TPSCG

Client/client  
PWGC

Drawing title/Titre du dessin

**KEY PLAN  
AND  
LIST OF DRAWINGS  
DRAWING PACKAGE 2 OF 7  
OVERALL B1 & B3 PIT AREAS**

Project No./No. du projet	Sheet/Feuille	Revision no./La Révision no.
13-1426-0010 DOC. #080	0 OF 5	1



**PRELIMINARY**  
NOT FOR CONSTRUCTION



**LEGEND**

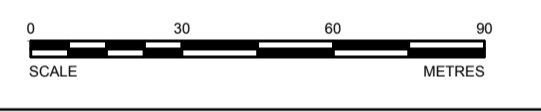
- 1000 N GMRP COORDINATE SYSTEM
- 600 S IMG COORDINATE SYSTEM
- 1000 S IME COORDINATE SYSTEM
- 1st LEVEL (100) UG. DEVELOPMENT
- UG. RAMP, DECLINES AND INCLINES
- ARSENIC CHAMBERS AND STOPES
- APPROXIMATE EXTENT OF B1 PIT ON 1st LEVEL
- APPROXIMATE EXTENT OF B1 PIT ON AR4 UPPER LEVEL
- INTERMEDIATE DEVELOPMENT BETWEEN LEVELS
- DCNJV MAIN TRAVEL WAY / WORK AREAS
- NOT REGULARLY TRAVELLED BY DCNJV, DISCUSS ENTRY PROCEDURES WITH DCNJV
- HAZARDOUS PRESENT, DISCUSS ENTRY PROCEDURES WITH DCNJV, DOCUMENTED RISK ASSESSMENT REQUIRED.
- MAJOR HAZARDOUS PRESENT, DISCUSS ENTRY PROCEDURES WITH DCNJV, DOCUMENTED RISK ASSESSMENT REQUIRED, SENIOR GOLDER UG EMPLOYEES WITH DCNJV ESCORT ONLY.
- BACKFILLED WITH WASTE ROCK
- RAISE
- TOP OF RAISE
- RAISE THROUGH LEVEL
- BOTTOM OF RAISE

**NOTES**

1. ALL UNITS ARE IN METERS UNLESS OTHERWISE NOTED. COORDINATE SYSTEM IS THE GMRP COORDINATE SYSTEM.
2. IMG GRID DISPLAYED IS IN METERS, UNITS AND SHOWN FOR INFORMATION ONLY.
3. THE UNDERGROUND MINE GEOMETRY INFORMATION SHOWN CONTAINS ERRORS AND OMISSIONS WHICH NEED TO BE CONSIDERED WHEN USING IT FOR DESIGN PURPOSES.

**REFERENCES**

1. COMPOSITE LEVEL PLANS AND MINE LAYOUT PROVIDED BY "PWGSC"



**DO NOT SCALE DRAWINGS**

Revision/	Description/Description	Date/Date
1	ISSUED FOR TENDER WITH DOC #080	2014-02-12
0	ISSUED FOR TENDER WITH DOC #080	2014-01-31
B	ISSUED FOR TENDER WITH DOC #080	2014-01-24
A	ISSUED FOR TENDER WITH DOC #080	2013-12-05

Client/client

**PUBLIC WORKS  
GOVERNMENT SERVICES  
CANADA**

Project title/Titre du projet  
**GIANT MINE  
REMEDATION PROJECT  
YELLOWKNIFE, N.W.T.**

**UNDERGROUND**

Approved by/Approuvé par  
DTK

Designed by/Concept par  
CY

Drawn by/Dessiné par  
TAK

PWGSC Project Manager/Administrateur de Projets TPSCG  
DAVE COLBOURNE

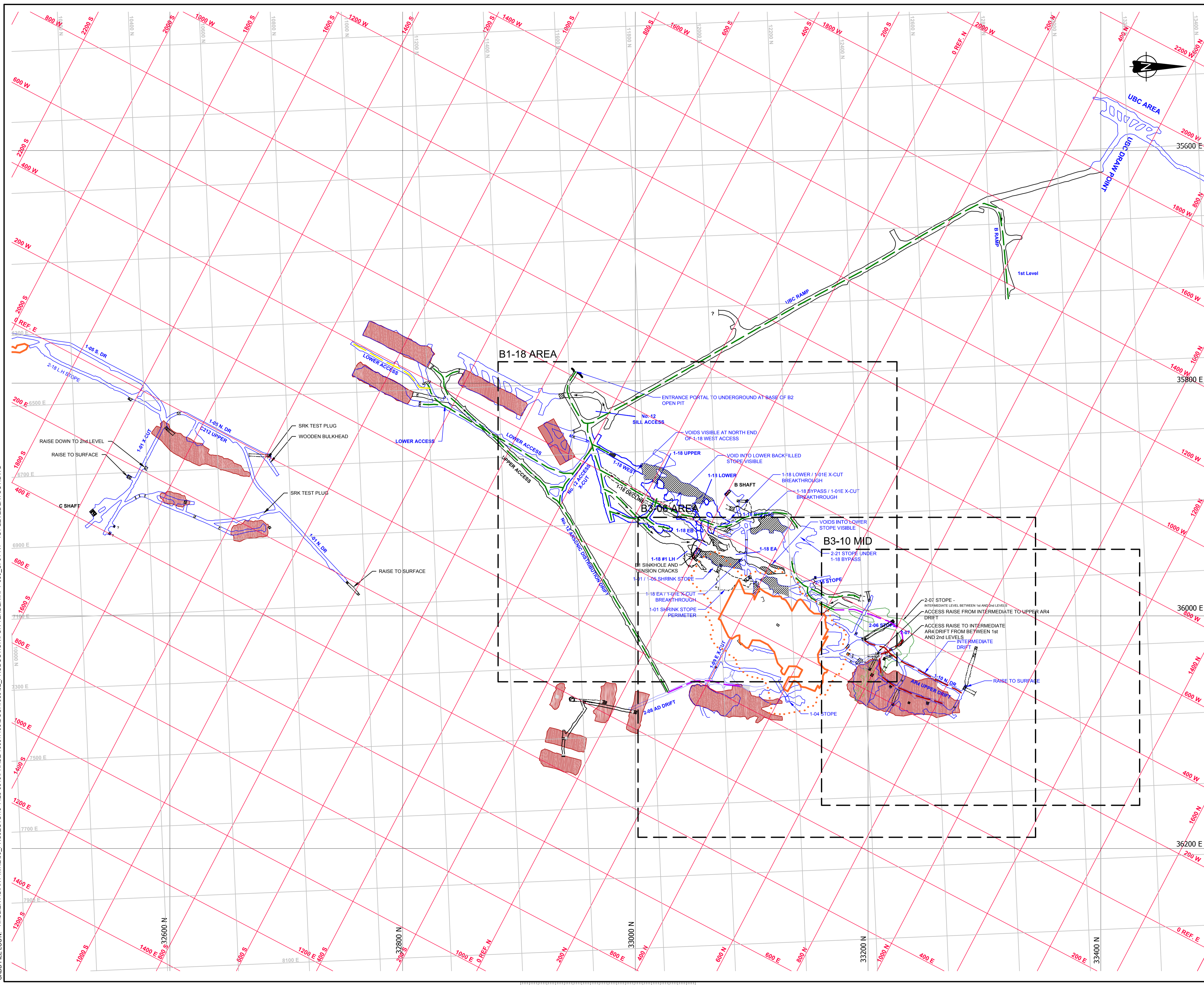
PWGSC, Architectural and Engineering Resources Manager/  
Ressources Architectural et de Directeur d'ingénierie, TPSCG

Client/client  
PWGSC

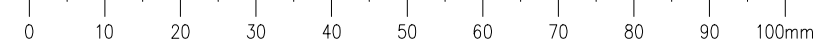
Drawing title/Titre du dessin

**UNDERGROUND LEVEL PLAN  
LEVEL 100 - 1ST LEVEL LAYOUT  
OVERALL B1 PIT AREA  
CONSULTANT ACCESS MAP**

Project No./No. du projet <b>13-1426-0010 DOC. #080</b>	Sheet/Feuille <b>1 OF 5</b>	Revision no./ La Révision no. <b>1</b>
--	------------------------------------	--



CADD FILE LOC\N:\NIC\CLIENT\GIANT\_MINE\99\_PROJECTS\13-1426-0010\PHASE 1000\103\DOC.#080\02\_PRODUCTION\TENDER\PT-080\_CFO1-R1 - 1ST LEVEL LAYOUT.DWG



**PRELIMINARY**  
NOT FOR CONSTRUCTION



**LEGEND**

- 1000 N GMRP COORDINATE SYSTEM
- 600 S IMG COORDINATE SYSTEM
- 500 S IME COORDINATE SYSTEM
- 2nd LEVEL (250) UG. DEVELOPMENT
- UG. RAMPS, DECLINES AND INCLINES
- ARSENIC CHAMBERS AND STOPIES
- INTERMEDIATE DEVELOPMENT BETWEEN LEVELS
- DCNJV MAIN TRAVEL WAY / WORK AREAS
- NOT REGULARLY TRAVELLED BY DCNJV, DISCUSS ENTRY PROCEDURES WITH DCNJV
- HAZARDOUS PRESENT, DISCUSS ENTRY PROCEDURES WITH DCNJV, DOCUMENTED RISK ASSESSMENT REQUIRED
- MAJOR HAZARDOUS PRESENT, DISCUSS ENTRY PROCEDURES WITH DCNJV, DOCUMENTED RISK ASSESSMENT REQUIRED, SENIOR GOLDR UNEMPLOYEES WITH DCNJV ESCORT ONLY
- RAISE
- TOP OF RAISE
- RAISE THROUGH LEVEL
- BOTTOM OF RAISE

**NOTES**

1. ALL UNITS ARE IN METERS UNLESS OTHERWISE NOTED. COORDINATE SYSTEM IS THE GMRP COORDINATE SYSTEM.
2. IMG GRID DISPLAYED IS IN IMPERIAL UNITS AND SHOWN FOR INFORMATION ONLY.
3. THE UNDERGROUND MINE GEOMETRY INFORMATION SHOWN CONTAINS ERRORS AND OMISSIONS WHICH NEED TO BE CONSIDERED WHEN USING IT FOR DESIGN PURPOSES.

**REFERENCES**

1. COMPOSITE LEVEL PLANS AND MINE LAYOUT PROVIDED BY "PWGSC"



**DO NOT SCALE DRAWINGS**

Revision/	Description/Description	Date/Date
1	ISSUED FOR TENDER WITH DOC #080	2014-02-12
0	ISSUED FOR TENDER WITH DOC #080	2014-01-31
B	ISSUED FOR TENDER WITH DOC #080	2014-01-24
A	ISSUED FOR TENDER WITH DOC #080	2013-12-05

Client/client

**PUBLIC WORKS  
GOVERNMENT SERVICES  
CANADA**

Project title/Titre du projet  
**GIANT MINE  
REMEDIATION PROJECT  
YELLOWKNIFE, N.W.T.**

**UNDERGROUND**

Approved by/Approve par  
DTK

Designed by/Concept par  
CY

Drawn by/Dessine par  
TAK  
PWGSC Project Manager/Administrateur de Projets TPSSC  
DAVE COLBOURNE

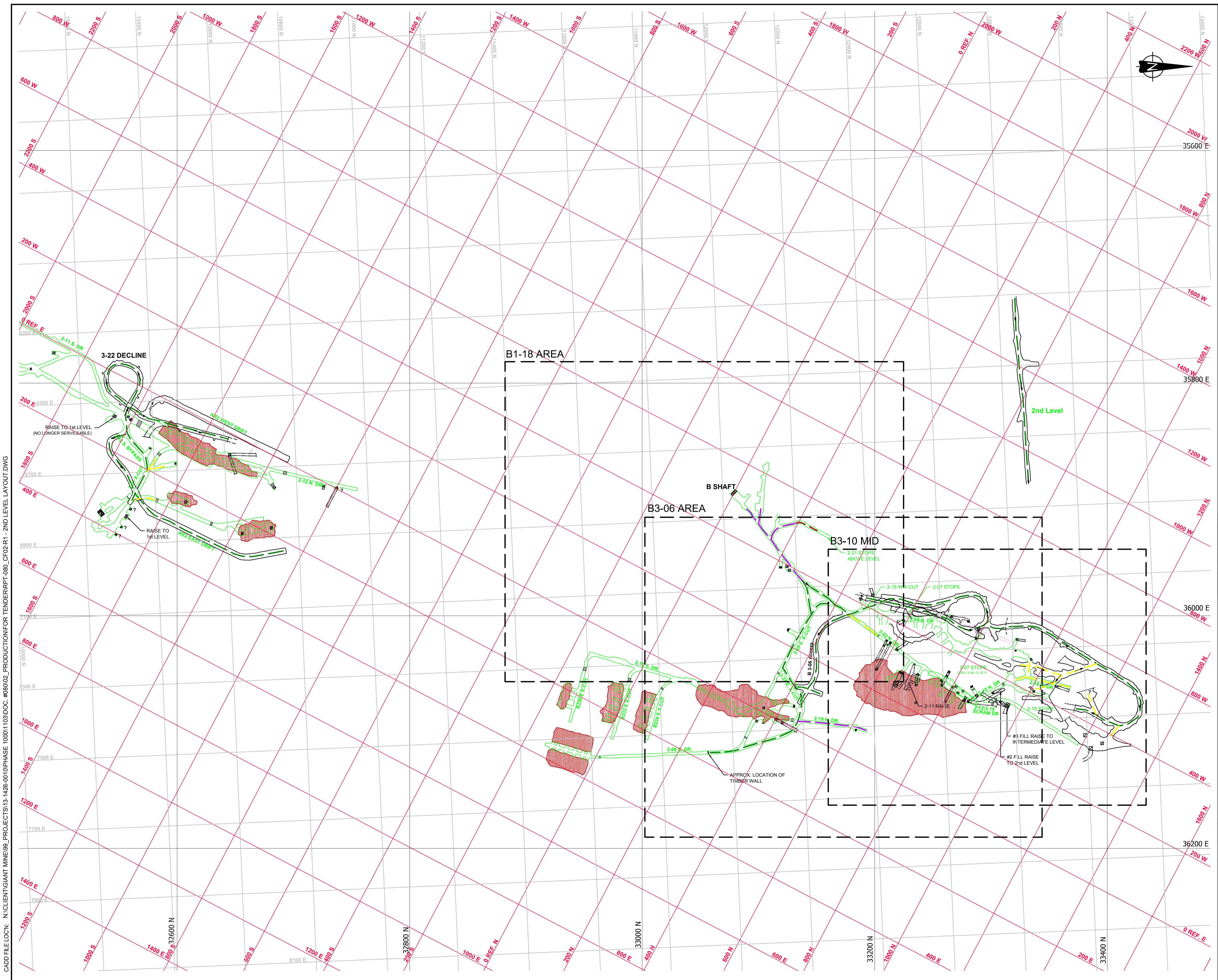
PWGSC, Architectural and Engineering Resources Manager/  
Ressources Architectural et de Directeur d'ingénierie, TPSSC

Client/client  
PWGSC

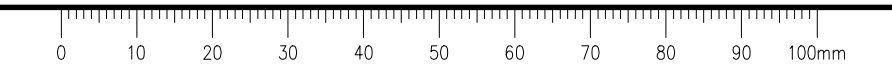
Drawing title/Titre du dessin

**UNDERGROUND LEVEL PLAN  
LEVEL 250 - 2ND LEVEL LAYOUT  
OVERALL B1 PIT AREA  
CONSULTANT ACCESS MAP**

Project No./No. du 13-1426-0010 DOC. #080	Sheet/Feuille <b>2</b> OF 5	Revision no./ La Révision no. <b>1</b>
---	-----------------------------------	---



CADD FILE LOC\N:\CLIENT\GIANT\_MINE\99\_PROJECTS\13-1426-0010\PHASE 1000\1103\DOC.#080\02\_PRODUCTION\FOR TENDER\RPT-080\_CFO2-R1 - 2ND LEVEL LAYOUT.DWG



**PRELIMINARY**  
NOT FOR CONSTRUCTION



**LEGEND**

- 33000 GMRP COORDINATE SYSTEM
- 800 S IMG COORDINATE SYSTEM
- 000.0 IME COORDINATE SYSTEM
- 3rd LEVEL (425) UG DEVELOPMENT
- UG. RAMPS, DECLINES AND INCLINES
- INTERMEDIATE DEVELOPMENT BETWEEN LEVELS
- DCNJV MAIN TRAVEL WAY / WORK AREAS
- NOT REGULARLY TRAVELLED BY DCNJV. DISCUSS ENTRY PROCEDURES WITH DCNJV
- HAZARDOUS PRESENT. DISCUSS ENTRY PROCEDURES WITH DCNJV. DOCUMENTED RISK ASSESSMENT REQUIRED.
- MAJOR HAZARDOUS PRESENT. DISCUSS ENTRY PROCEDURES WITH DCNJV. DOCUMENTED RISK ASSESSMENT REQUIRED. SENIOR GOLDBER UG EMPLOYEES WITH DCNJV ESCORT ONLY.
- RAISE
- TOP OF RAISE
- RAISE THROUGH LEVEL
- BOTTOM OF RAISE

**NOTES**

1. ALL UNITS ARE IN METERS UNLESS OTHERWISE NOTED. COORDINATE SYSTEM IS THE GMRP COORDINATE SYSTEM.
2. IMG GRID DISPLAYED IS IN IMPERIAL UNITS AND SHOWN FOR INFORMATION ONLY.
3. THE UNDERGROUND MINE GEOMETRY INFORMATION SHOWN CONTAINS ERRORS AND OMISSIONS WHICH NEED TO BE CONSIDERED WHEN USING IT FOR DESIGN PURPOSES.

**REFERENCES**

1. COMPOSITE LEVEL PLANS AND MINE LAYOUT PROVIDED BY "PWGSC"



**DO NOT SCALE DRAWINGS**

Revision/	Description/Description	Date/Date
1	ISSUED FOR TENDER WITH DOC #080	2014-02-12
0	ISSUED FOR TENDER WITH DOC #080	2014-01-31
B	ISSUED FOR TENDER WITH DOC #080	2014-01-24
A	ISSUED FOR TENDER WITH DOC #080	2013-12-05

Client/client

**PUBLIC WORKS  
GOVERNMENT SERVICES  
CANADA**

Project title/Titre du projet  
**GIANT MINE  
REMEDIAION PROJECT  
YELLOWKNIFE, N.W.T.**

**UNDERGROUND**

Approved by/Approve par  
DTK

Designed by/Concept par  
CY

Drawn by/Dessine par  
TAK

PWGSC Project Manager/Administrateur de Projets TPSGC  
DAVE COLBOURNE

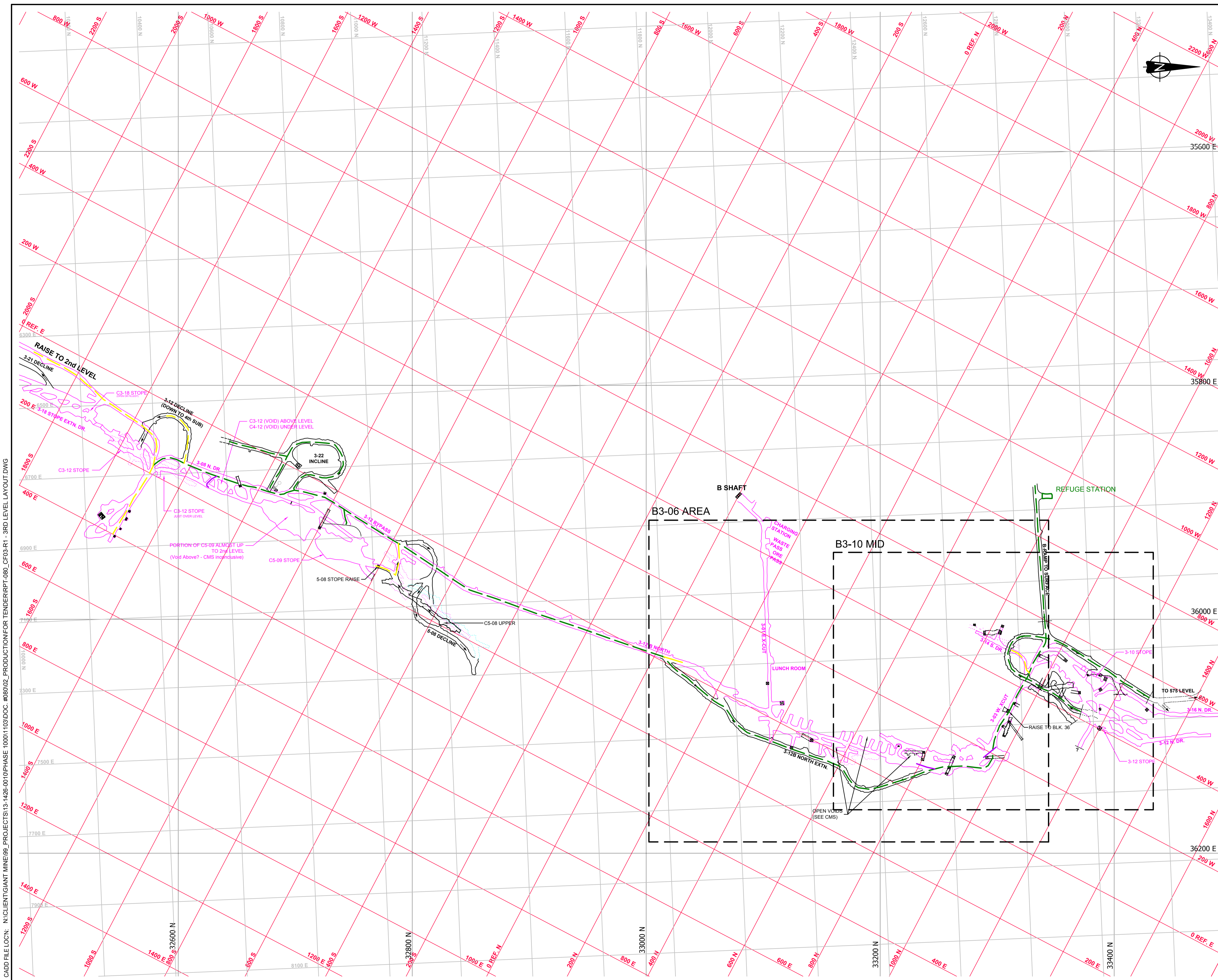
PWGSC, Architectural and Engineering Resources Manager/  
Ressources Architectural et de Directeur d'ingénierie, TPSGC

Client/client  
PWGSC

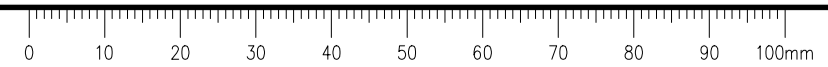
Drawing title/Titre du dessin

**UNDERGROUND LEVEL PLAN  
LEVEL 425 - 3RD LEVEL LAYOUT  
OVERALL B1 PIT AREA  
CONSULTANT ACCESS MAP**

Project No./No. du projet <b>13-1426-0010 DOC. #080</b>	Sheet/Fauille <b>3 OF 5</b>	Revision no./ La Révision no. <b>1</b>
--	------------------------------------	--



CADD FILE LOC'N: N:\CLIENT\GIANT MINE\99\_PROJECTS\13-1426-0010\PHASE 1000\1103\DOC.#080\02\_PRODUCTION\TENDER\PT-080\_CFO3-R1 - 3RD LEVEL LAYOUT.DWG



**PRELIMINARY**  
NOT FOR CONSTRUCTION



**LEGEND**

- 3000 W GMRP COORDINATE SYSTEM
- 800 S IMG COORDINATE SYSTEM
- 000 S IME COORDINATE SYSTEM
- 4th LEVEL (S75) UG DEVELOPMENT
- UG RAMP, DECLINES AND INCLINES
- INTERMEDIATE DEVELOPMENT BETWEEN LEVELS
- DCNJV MAIN TRAVEL WAY / WORK AREAS
- NOT REGULARLY TRAVELLED BY DCNJV. DISCUSS ENTRY PROCEDURES WITH DCNJV
- HAZARDOUS PRESENT. DISCUSS ENTRY PROCEDURES WITH DCNJV. DOCUMENTED RISK ASSESSMENT REQUIRED.
- MAJOR HAZARDOUS PRESENT. DISCUSS ENTRY PROCEDURES WITH DCNJV. DOCUMENTED RISK ASSESSMENT REQUIRED. SENIOR GOLDER UG EMPLOYEES WITH DCNJV ESCORT ONLY.
- RAISE
- TOP OF RAISE
- RAISE THROUGH LEVEL
- BOTTOM OF RAISE

**NOTES**

1. ALL UNITS ARE IN METERS UNLESS OTHERWISE NOTED. COORDINATE SYSTEM IS THE GMRP COORDINATE SYSTEM.
2. IMG GRID DISPLAYED IS IN IMPERIAL UNITS AND SHOWN FOR INFORMATION ONLY.
3. THE UNDERGROUND MINE GEOMETRY INFORMATION SHOWN CONTAINS ERRORS AND OMISSIONS WHICH NEED TO BE CONSIDERED WHEN USING IT FOR DESIGN PURPOSES.

**REFERENCES**

1. COMPOSITE LEVEL PLANS AND MINE LAYOUT PROVIDED BY "PWGSC"



**DO NOT SCALE DRAWINGS**

Revision/	Description/Description	Date/Date
1	ISSUED FOR TENDER WITH DOC #080	2014-02-12
0	ISSUED FOR TENDER WITH DOC #080	2014-01-31
B	ISSUED FOR TENDER WITH DOC #080	2014-01-24
A	ISSUED FOR TENDER WITH DOC #080	2013-12-05

Client/client

**PUBLIC WORKS  
GOVERNMENT SERVICES  
CANADA**

Project title/Titre du projet  
**GIANT MINE  
REMEDICATION PROJECT  
YELLOWKNIFE, N.W.T.**

**UNDERGROUND**

Approved by/Approuvé par  
DTK

Designed by/Concept par  
CY

Drawn by/Dessiné par  
TAK

PWGSC Project Manager/Administrateur de Projets TPSSG  
DAVE COLBOURNE

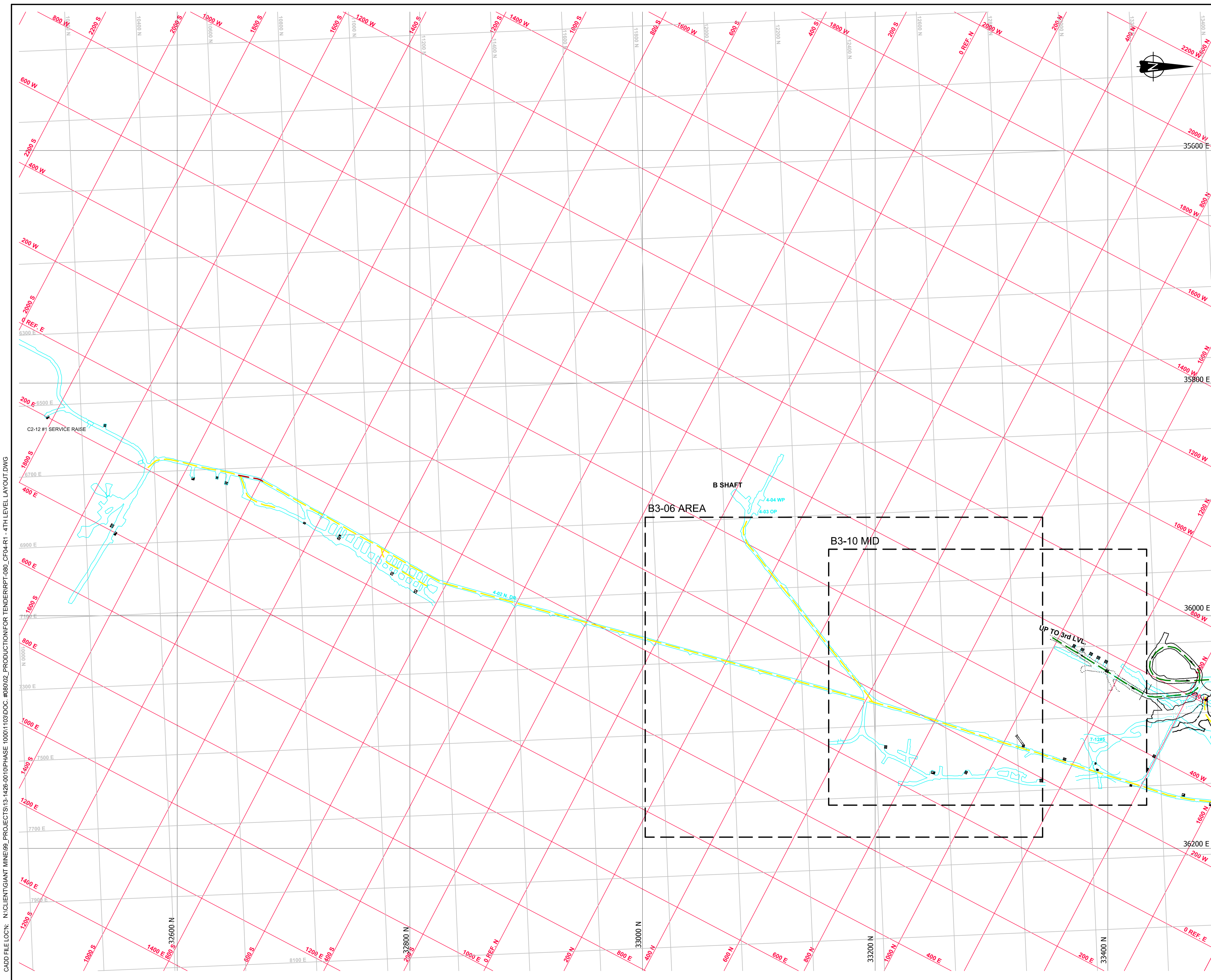
PWGSC, Architectural and Engineering Resources Manager/  
Ressources Architectural et de Directeur d'ingénierie, TPSSG

Client/client  
PWGSC

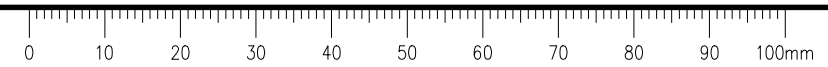
Drawing title/Titre du dessin

**UNDERGROUND LEVEL PLAN  
LEVEL 575 - 4TH LEVEL LAYOUT  
OVERALL B1 PIT AREA  
CONSULTANT ACCESS MAP**

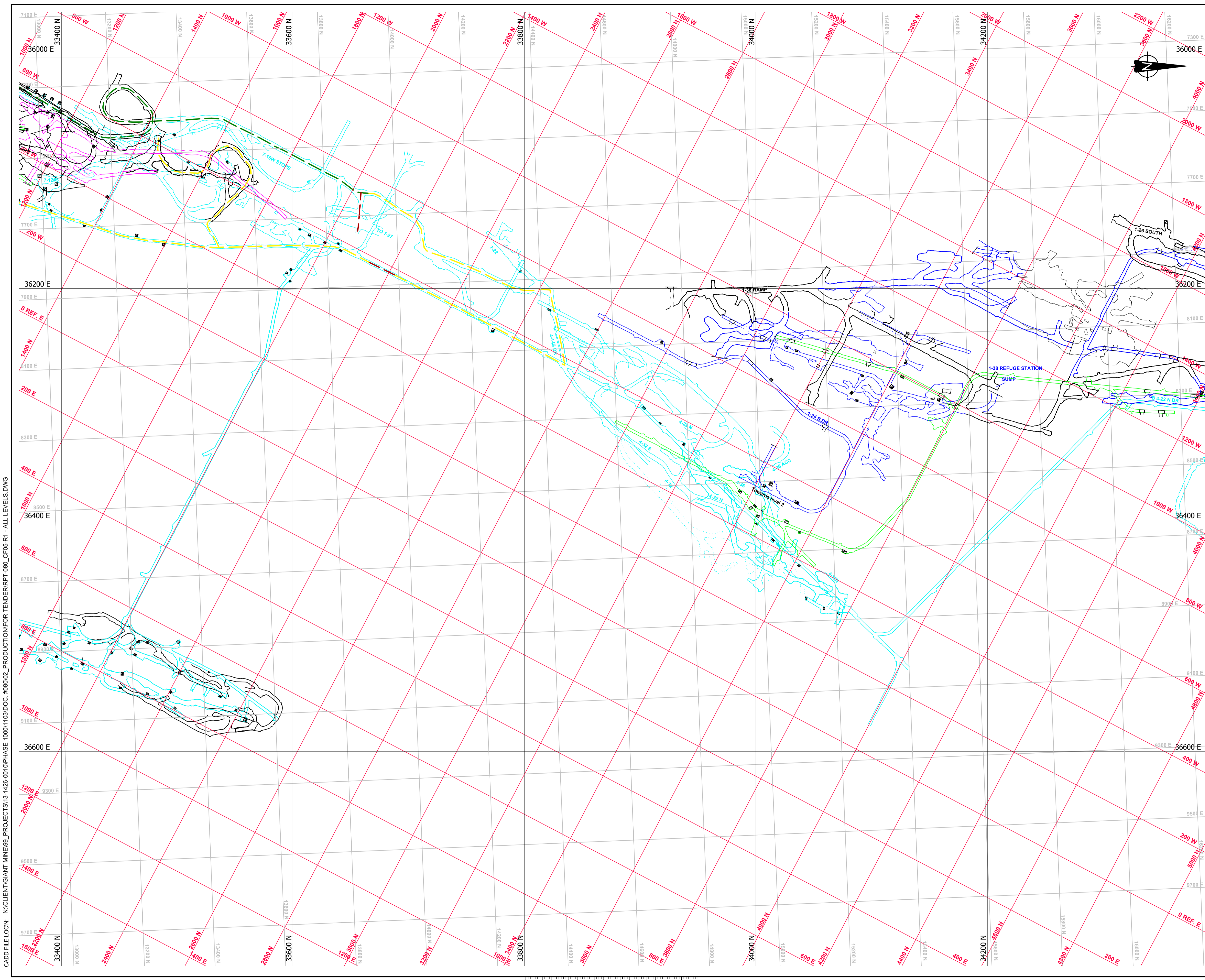
Project No./No. du projet <b>13-1426-0010 DOC. #080</b>	Sheet/Fauille <b>4 OF 5</b>	Revision no./ La Révision no. <b>1</b>
--	------------------------------------	---



CADD FILE LOC'N: N:\CLIENT\GIANT\_MINE\99\_PROJECTS\13-1426-0010\PHASE 1000\1103\DOC.#080\02\_PRODUCTION\TENDER\RPT-080\_CFO4-R1-4TH LEVEL LAYOUT.DWG



CADD FILE LOC\N:\CLIENT\GIANT\_MINE\99\_PROJECTS\13-1426-00\10PHASE\_1000\1103\DOC.#080\02\_PROD\PRODUCTION\TENDER\RPT-080\_CFO5-R1 - ALL LEVELS.DWG



**PRELIMINARY**  
 NOT FOR CONSTRUCTION



**LEGEND**

- 1000 N GMRP COORDINATE SYSTEM
- 600 S IMG COORDINATE SYSTEM
- 500 S IME COORDINATE SYSTEM
- 1st LEVEL (100) UG. DEVELOPMENT
- 2nd LEVEL (250) UG. DEVELOPMENT
- 3rd LEVEL (425) UG. DEVELOPMENT
- 4th LEVEL (575) UG. DEVELOPMENT
- UG. RAMPS, DECLINES AND INCLINES
- INTERMEDIATE DEVELOPMENT BETWEEN LEVELS
- DC/NV MAIN TRAVEL WAY / WORK AREAS
- NOT REGULARLY TRAVELLED BY DC/NV. DISCUSS ENTRY PROCEDURES WITH DC/NV.
- HAZARDOUS PRESENT. DISCUSS ENTRY PROCEDURES WITH DC/NV. DOCUMENTED RISK ASSESSMENT REQUIRED.
- MAJOR HAZARDOUS PRESENT. DISCUSS ENTRY PROCEDURES WITH DC/NV. DOCUMENTED RISK ASSESSMENT REQUIRED. SENIOR GOLDER UG EMPLOYEES WITH DC/NV ESCORT ONLY.

**RAISE**

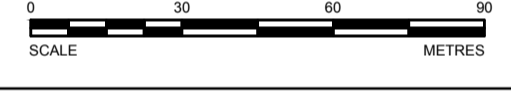
- TOP OF RAISE
- RAISE THROUGH LEVEL
- BOTTOM OF RAISE

**NOTES**

- ALL UNITS ARE IN METERS UNLESS OTHERWISE NOTED. COORDINATE SYSTEM IS THE GMRP COORDINATE SYSTEM.
- IMG GRID DISPLAYED IS IN IMPERIAL UNITS AND SHOWN FOR INFORMATION ONLY.
- THE UNDERGROUND MINE GEOMETRY INFORMATION SHOWN CONTAINS ERRORS AND OMISSIONS WHICH NEED TO BE CONSIDERED WHEN USING IT FOR DESIGN PURPOSES.

**REFERENCES**

- COMPOSITE LEVEL PLANS AND MINE LAYOUT PROVIDED BY "PWGSC"



**DO NOT SCALE DRAWINGS**

Revision/	Description/Description	Date/Date
1	ISSUED FOR TENDER WITH DOC #080	2014-02-12
0	ISSUED FOR TENDER WITH DOC #080	2014-01-31
B	ISSUED FOR TENDER WITH DOC #080	2014-01-24
A	ISSUED FOR TENDER WITH DOC #080	2013-12-05

Client/client

**PUBLIC WORKS  
 GOVERNMENT SERVICES  
 CANADA**

Project title/Titre du projet  
**GIANT MINE  
 REMEDIATION PROJECT  
 YELLOWKNIFE, N.W.T.**

**UNDERGROUND**

Approved by/Approuvé par  
 DTK

Designed by/Concept par  
 CY

Drawn by/Dessiné par  
 TAK

PWGSC Project Manager/Administrateur de Projets TP/SGC  
 DAVE COLBOURNE

PWGSC, Architectural and Engineering Resources Manager/  
 Ressources Architectural et de Directeur d'ingénierie, TP/SGC

Client/client  
 PWGSC

Drawing title/Titre du dessin

**UNDERGROUND LEVEL PLAN  
 LEVEL 100, 250, 425 & 575  
 1ST, 2ND, 3RD & 4TH LEVEL  
 OVERALL B3 PIT AREA**

Project No./No. du projet <b>13-1426-0010 DOC. #080</b>	Sheet/Feuille <b>5 OF 5</b>	Revision no./ La Révision no. <b>1</b>
--	------------------------------------	--

