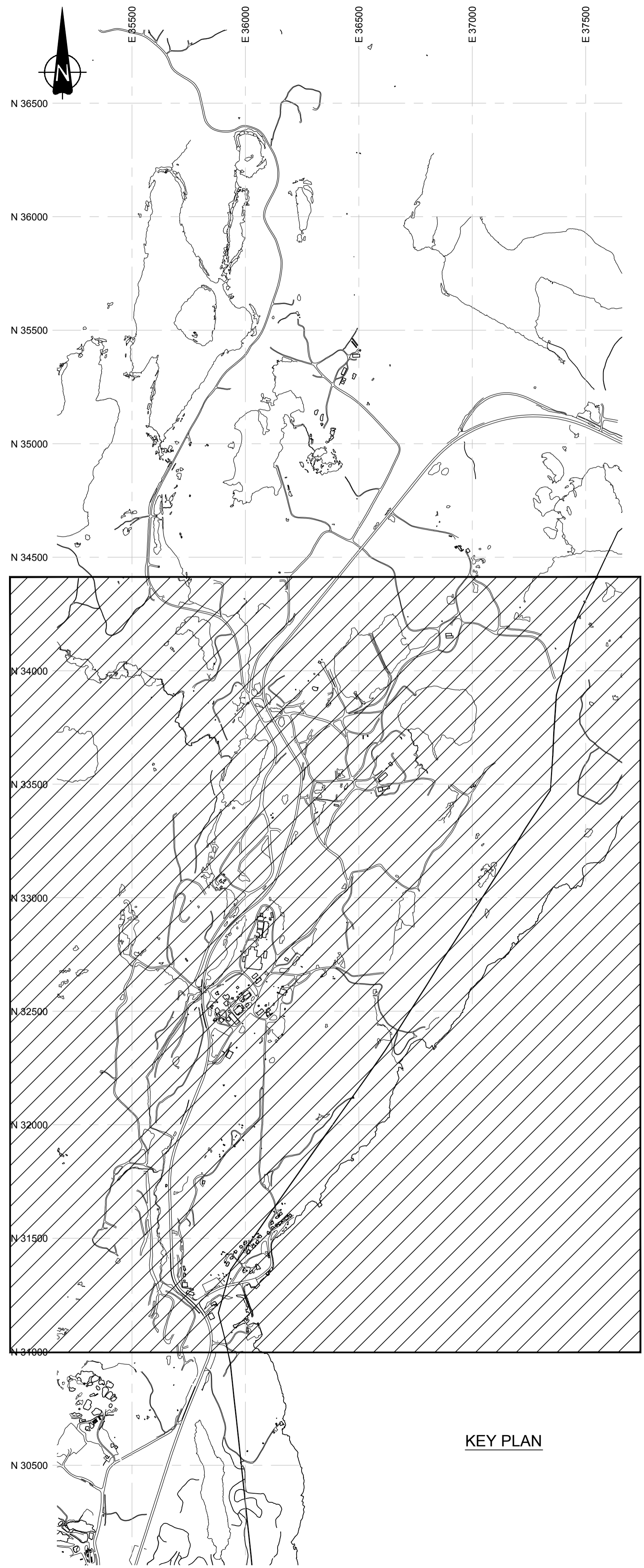


Saved by: Klassen, Tyler

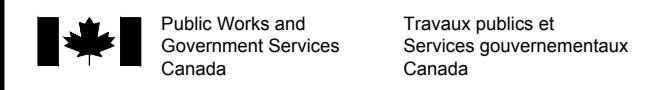
Plotted on: February 7, 2014

CADD FILE LOCN: N:\CLIENT\GIANT MINE\99_PROJECTS\13-1426-0010\PHASE 1000\1103\DOC.#065\02_PRODUCTION\FOR TENDER\RPT-065_CFO0-R1 - KEY PLAN.DWG



KEY PLAN

LIST OF DRAWINGS		
DRAWING NUMBER	REVISION NUMBER	TITLE OF DRAWING
RPT-065_CFO0-R1	1	KEY PLAN
RPT-065_CFO1-R1	1	UG LEVEL PLAN - OVERALL SITE - ALL LEVELS



Public Works and Government Services Canada
Travaux publics et Services gouvernementaux Canada

REAL PROPERTY SERVICES
Western Region
SERVICES IMMOBILIERS
Région de l'ouest

PRELIMINARY
NOT FOR CONSTRUCTION



DO NOT SCALE DRAWINGS

Revision/Revision	Description/Description	Date/Date
1	ISSUED FOR TENDER WITH DOC #065	2014-02-12
0	ISSUED FOR TENDER WITH DOC #065	2014-01-31
B	ISSUED FOR TENDER WITH DOC #065	2014-01-24
A	ISSUED FOR TENDER WITH DOC #065	2013-12-06

Client/client

**PUBLIC WORKS
GOVERNMENT SERVICES
CANADA**

Project title/Titre du projet
**GIANT MINE
REMEDIATION PROJECT
YELLOWKNIFE, N.W.T.**

UNDERGROUND

Approved by/Approuvé par
DTK

Designed by/Concept par
CY

Drawn by/Dessiné par
TAK

PWSC Project Manager/Administrateur de Projets TPSCG
DAVE COLBOURNE

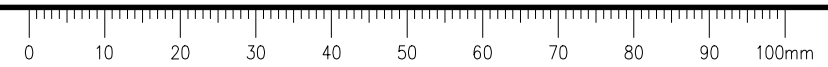
PWSC, Architectural and Engineering Resources Manager/
Ressources Architectural et de Directeur d'ingénierie, TPSCG

Client/client
PWSCG

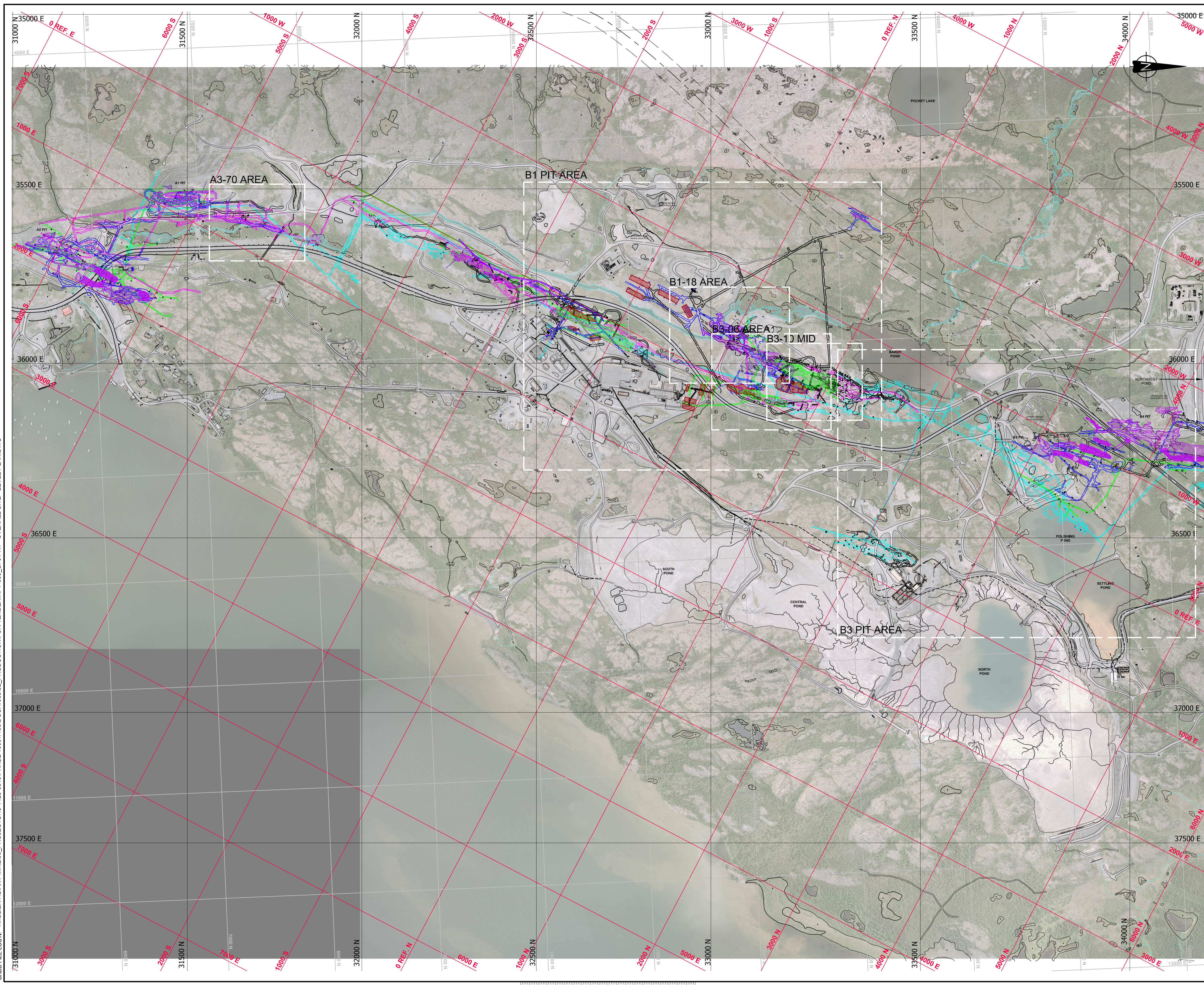
Drawing title/Titre du dessin

**KEY PLAN
AND
LIST OF DRAWINGS
DRAWING PACKAGE 1 OF 7
OVERALL SITE**

Project No./No. du projet	Sheet/Feuille	Revision no./La Révision no.
13-1426-0010 DOC. #065	0 OF 1	1



CADD FILE LOCN: N:\CLIENT\GIANT MINE\99_PROJECTS\13-1426-00\10\PHASE 1000\1103\DOC.#065\02_PRODUCTION\TENDER\RPT-065_CFO1-R1 - OVERALL SITE - LEVEL PLAN.DWG



LEGEND

- 1000 N GMRP COORDINATE SYSTEM
- 600 S IMG COORDINATE SYSTEM
- 500 S IME COORDINATE SYSTEM
- ARSENIC CHAMBERS AND STOPES MAXIMUM EXTENT
- NEAR SURFACE NON-ARSENIC STOPES (<30m DEPTH)
- NON-ARSENIC STOPES ADJACENT TO AN ARSENIC STOPE
- NON-ARSENIC STOPE BREAKTHROUGH TO OPEN-PIT, BACKFILLED WITH UNKNOWN FILL
- BAKER CREEK LIMITS
- 1st LEVEL (100) UG. DEVELOPMENT
- 2nd LEVEL (250) UG. DEVELOPMENT
- 3rd LEVEL (425) UG. DEVELOPMENT
- 4th LEVEL (575) UG. DEVELOPMENT
- UG. RAMPS, DECLINES AND INCLINES
- INTERMEDIATE DEVELOPMENT BETWEEN LEVELS
- HIGHWAY 4 REALIGNMENT

NOTES

1. ALL UNITS ARE IN METERS UNLESS OTHERWISE NOTED. COORDINATE SYSTEM IS THE GMRP COORDINATE SYSTEM.
2. IMG GRID DISPLAYED IS IN IMPERIAL UNITS AND SHOWN FOR INFORMATION ONLY.
3. THE UNDERGROUND MINE GEOMETRY INFORMATION SHOWN CONTAINS ERRORS AND OMISSIONS WHICH NEED TO BE CONSIDERED WHEN USING IT FOR DESIGN PURPOSES.

REFERENCES

1. COMPOSITE LEVEL PLANS AND MINE LAYOUT PROVIDED BY "PWGSC"



DO NOT SCALE DRAWINGS

Revision/	Description/Description	Date/Date
1	ISSUED FOR TENDER WITH DOC #065	2014-02-12
0	ISSUED FOR TENDER WITH DOC #065	2014-01-31
B	ISSUED FOR TENDER WITH DOC #065	2014-01-24
A	ISSUED FOR TENDER WITH DOC #065	2013-12-05

Client/client
PUBLIC WORKS
GOVERNMENT SERVICES
CANADA

Project title/Titre du projet
GIANT MINE
REMEDIATION PROJECT
YELLOWKNIFE, N.W.T.

UNDERGROUND

Approved by/Approuvé par
 DTK

Designed by/Concept par
 CY

Drawn by/Dessiné par
 TAK

PWGSC Project Manager/Administrateur de Projets TPSSC
 DAVE COLBOURNE

PWGSC, Architectural and Engineering Resources Manager/
 Ressources Architectural et de Directeur d'ingénierie, TPSSC

Client/client
 PWGSC

Drawing title/Titre du dessin
UNDERGROUND LEVEL PLAN
LEVEL 100, 250, 425 & 575
1ST, 2ND, 3RD & 4TH LEVEL
OVERALL SITE LAYOUT

Project No./No. du projet 13-1426-0010 DOC. #065	Sheet/Feuille 1 OF 1	Revision no./ La Révision no. 1
--	-----------------------------------	--

