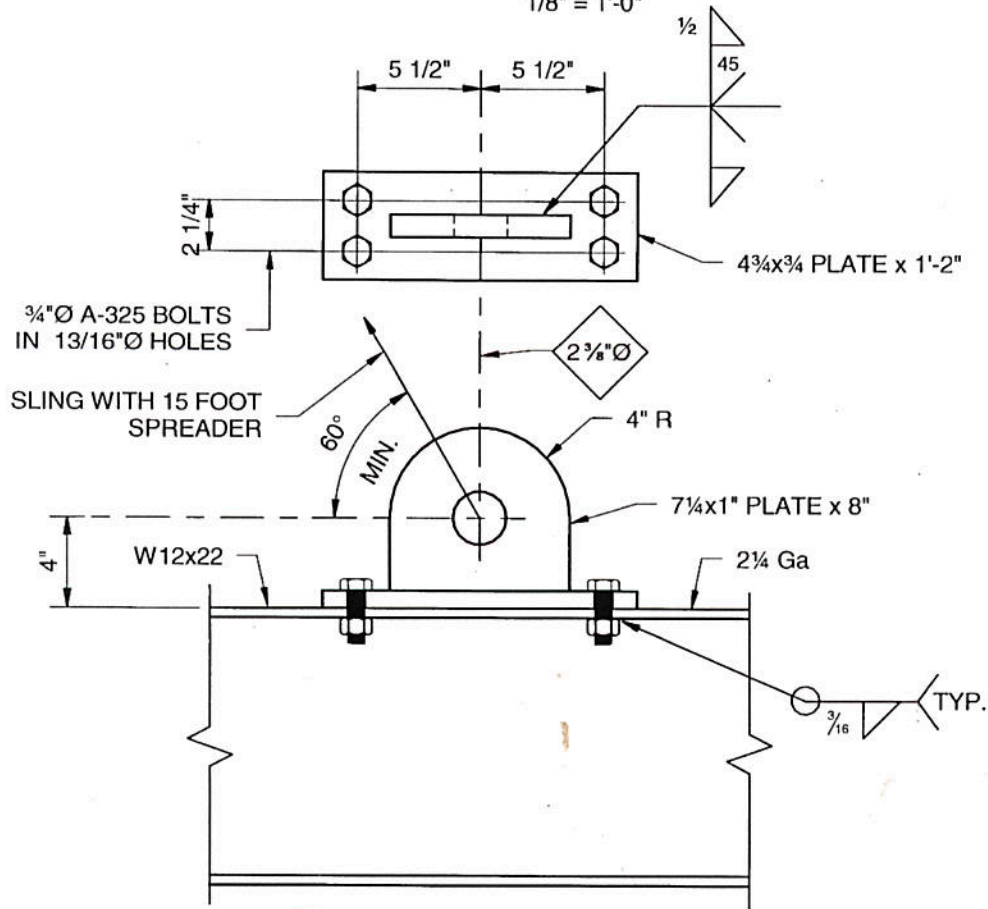


ROOF PLAN

1/8" = 1'-0"



TYPICAL RE-USABLE LIFTING LUG

1 1/2" = 1'-0"

RONEY ENGINEERING LIMITED

CONSULTING STRUCTURAL ENGINEERS
KINGSTON, ONTARIO
www.roneyengineering.com

PROJECT: MODULAR PORT OF ENTRY
RECEPTION BUILDING

TITLE: LIFTING LUGS

LOCATION: VARIOUS SITES

SCALE: AS SHOWN

PROJECT No.: 171652

FOR: CORCAN CONSTRUCTION

DATE: 03/07/14

SK7