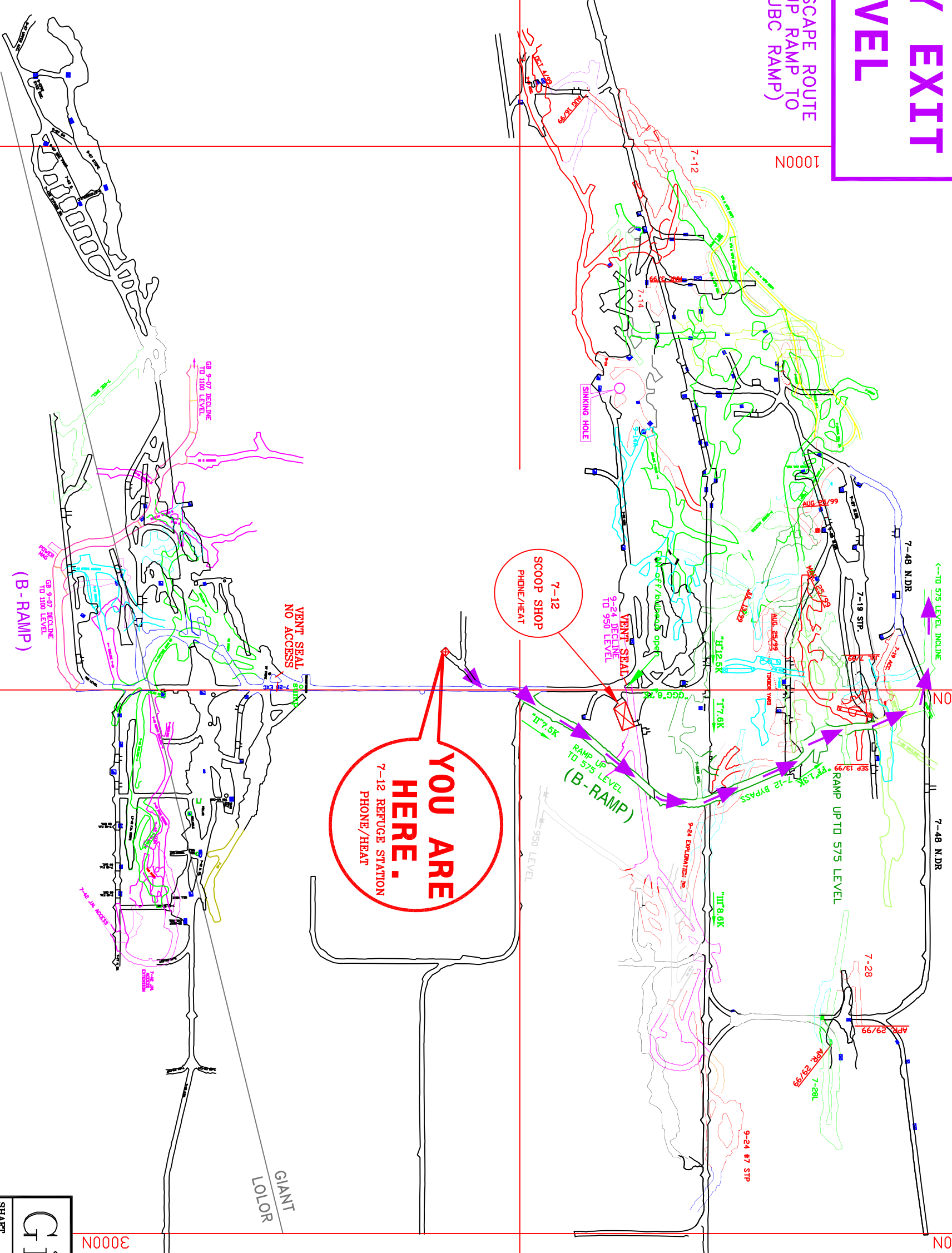


# EMERGENCY EXIT 750 LEVEL

→ → → →  
ESCAPE ROUTE  
(UP RAMP TO  
UBC RAMP)

See page 13

To B/C Shaft  
7-04 N DR.



P L A N



1000E

1000N

1000N

2000N

2000E

**YOU ARE  
HERE.**  
7-12 REFUGE STATION  
PHONE/HEAT

see page 15

## 750L

|                |
|----------------|
| DECEMBER 2014  |
| NOVEMBER 2014  |
| OCTOBER 2014   |
| SEPTEMBER 2014 |
| AUGUST 2014    |
| JULY 2014      |
| JUNE 2014      |
| MAY 2014       |
| APRIL 2014     |
| MARCH 2014     |
| FEBRUARY 2014  |
| JANUARY 2014   |

Giant Mine

SHAFT C/L

LEVEL: 750

COMPLEX: UBC

SCALE: 1" = 200'

UPDATED: March 2014

DATE: JAN 27, 1997

DRAWN: MSJ

CHECK:

J:\Vent\Vent\_Escape Plans\_800.sca\Vent\_Escape Plans\Vent\_Escape Plans 804\Misc\804