

PILOTAGE BUILDING
(PROPOSED TO BE BUILT
BY THE CITY OF TORONTO)

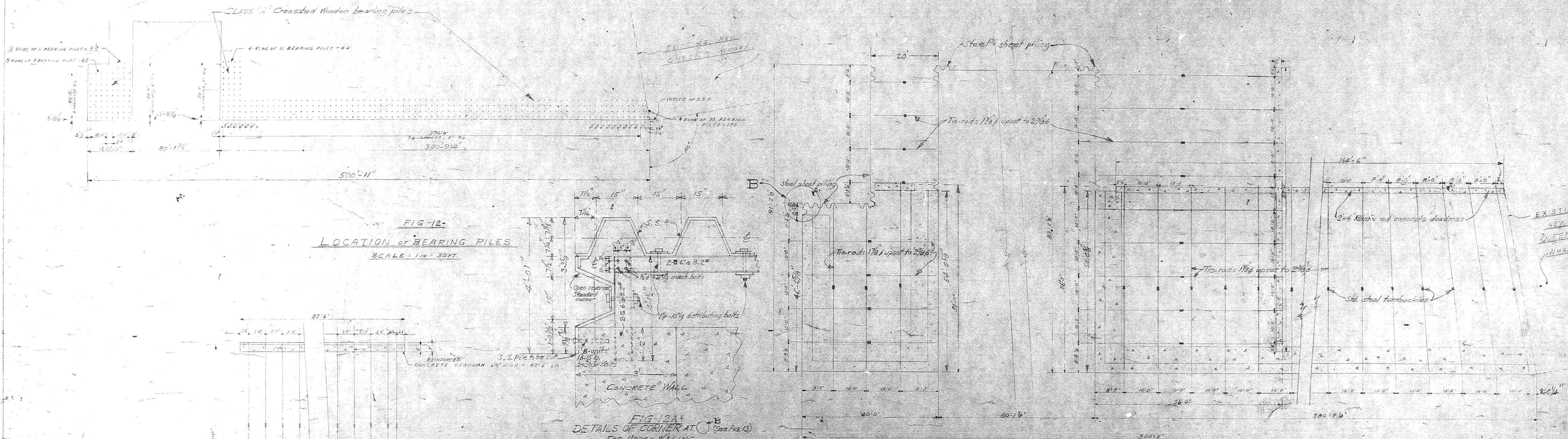


FIG-12
LOCATION OF BEARING PILES
SCALE: 1" = 30'-0"

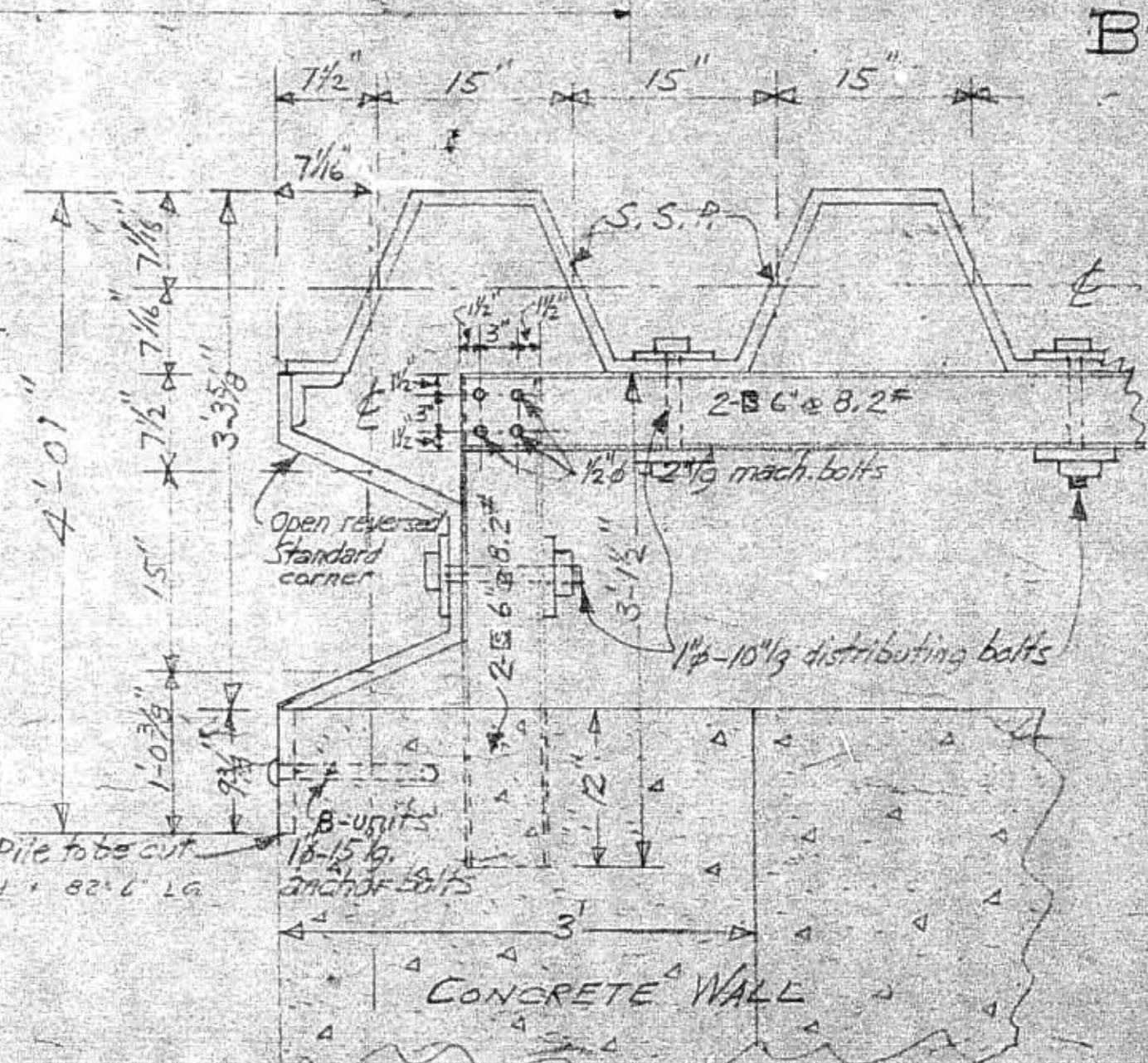


FIG-12A
DETAILS OF CORNER AT B
FOR UPPER WALING
SCALE: 1" = 1'-0"

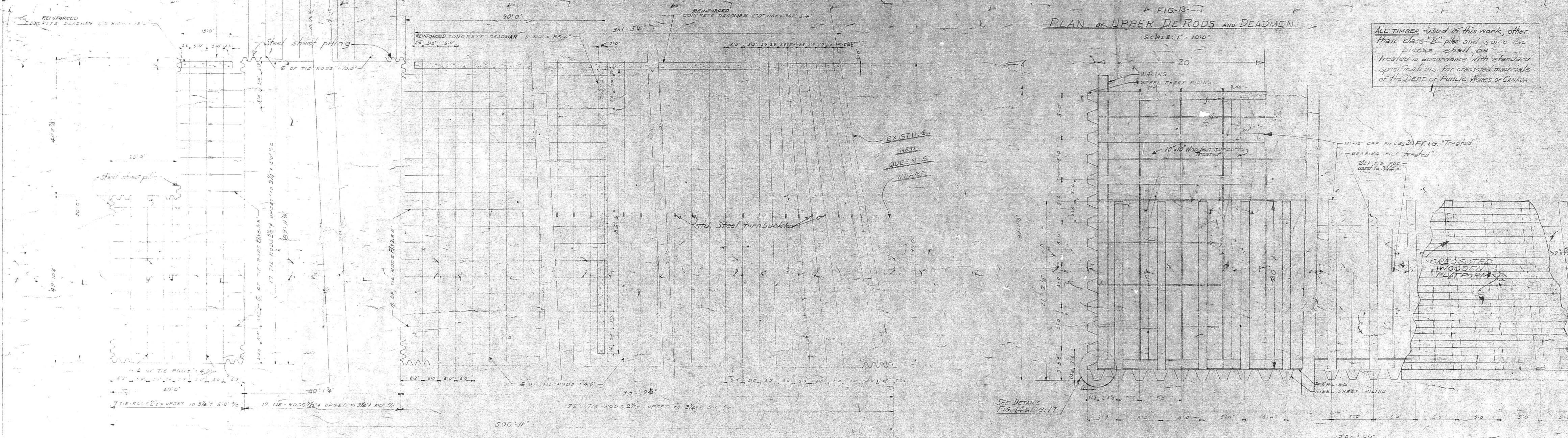


FIG-13
PLAN OF UPPER TIE RODS AND DEADMEN
SCALE: 1" = 10'-0"

ALL TIMBER used in this work, other than class "B" piles and some 50 pieces, shall be treated in accordance with standard specifications for creosoted materials of the DEPT. OF PUBLIC WORKS OF CANADA.

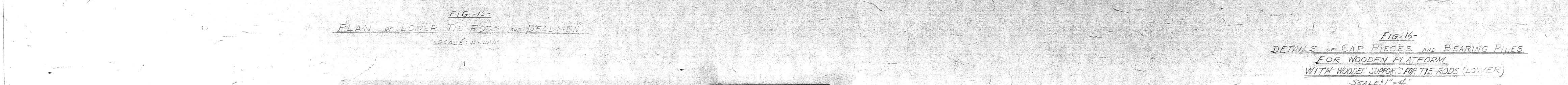


FIG-15
PLAN OF LOWER TIE RODS AND DEADMEN
SCALE: 1" = 10'-0"

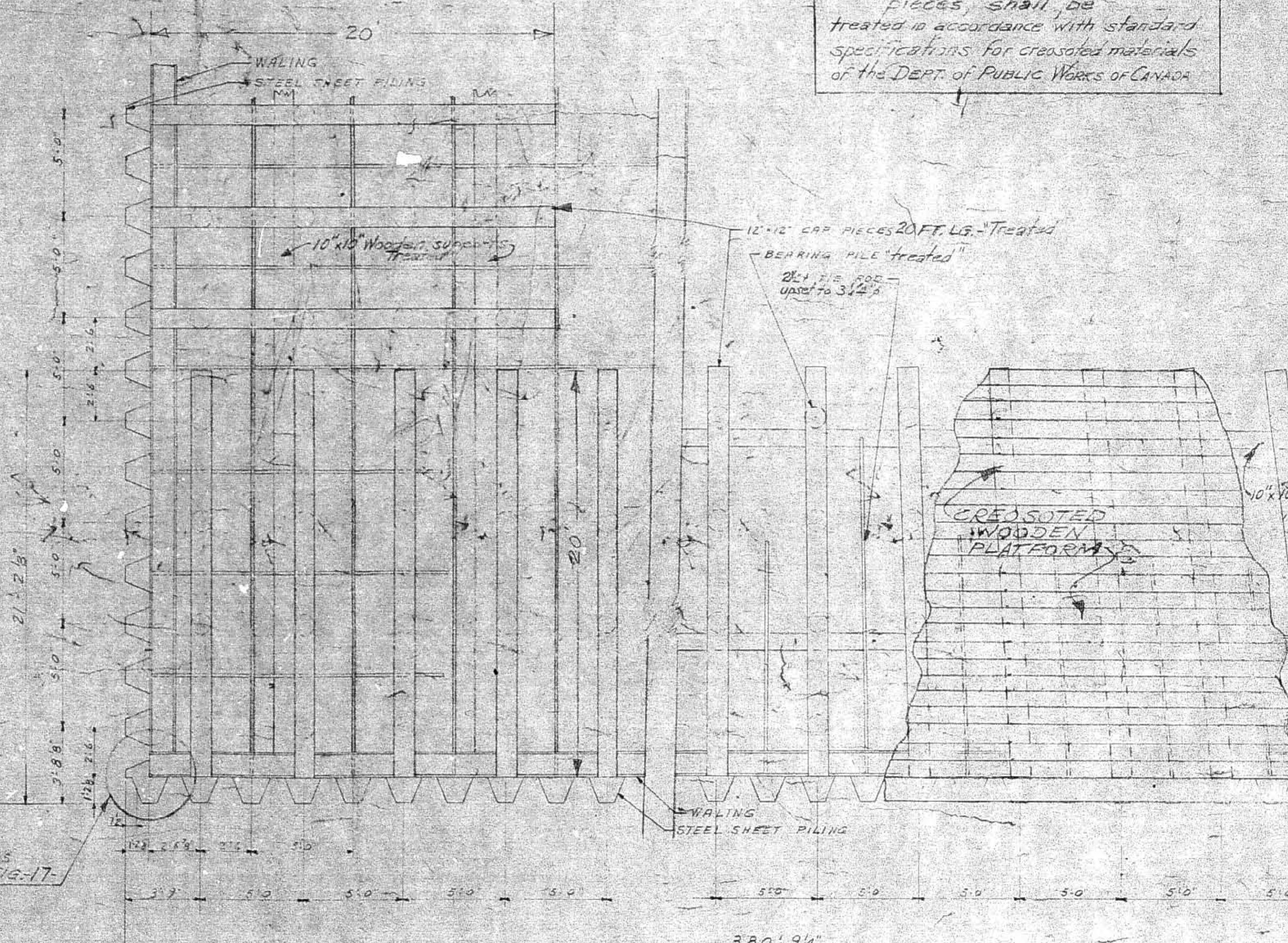


FIG-16
DETAILS OF CAP PIECES AND BEARING PILES
FOR WOODEN PLATFORM
WITH WOODEN SUPPORT FOR TIE RODS (LOWER)
SCALE: 1" = 4'-0"