



**Addendum / Addenda**

No./N<sup>o</sup>  
01

Project Description / Description de projet <b>U-61 Re-Construction of Research Road</b>		
Solicitation No./ No de sollicitation <b>14 22016</b>	Project No./N <sup>o</sup> de projet <b>U-61-3951</b>	W.O. No./N <sup>o</sup> d'ordre de travail <b>C766-SITE</b>
Departmental Representative / représentant ministériel <b>Don Seabrook</b>		Date <b>20 May 2014</b>
<p><b>Notice:</b> This addendum shall form part of the tender documents and all conditions shall apply and be read in conjunction with the original plans and specifications.</p>		<p><b>Nota:</b> Cet addenda fait partie intégrale des dossiers d'appel d'offres; toutes les conditions énoncées doivent être lues et appliquées en conjonction avec les plans et les devis originaux.</p>

1. Provide additional labour, material and equipment to carry out the additional description of work;
2. Repaving of the existing parking area adjacent to Building U62. Revised scope of work includes the full depth removal of the existing asphalt, topping up with granular 'A', regarding and compacting as required and repaving the area with 50mm SP12.5 Level B (PG 58-32) superpave asphalt. Finished grades to match existing.
3. Increase in quantities/estimated construction costs as follows:

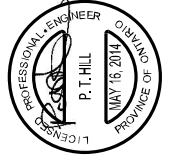
B-005	SuperPave 12.5 Level B Asphalt Pavement (PG 58-34)	tonnes	<b>+48</b>	\$	\$
B-009	Removal of Asphalt Pavement (Full Depth)	m <sup>2</sup> (P)	<b>+394</b>	\$	\$
B-013	Supply and Place Granular 'A' Base	tonnes	<b>+38</b>	\$	\$

4. Refer to drawings D-3951-TS-1, D-3951-GGL, D-3951-REM and D-3951-PEL.

**NRC Uplands Campus Research Road Rehabilitation**

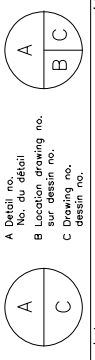
Item No.	Description	Unit	Estimated Quantity	Unit Price	Amount
<b>General</b>					
A-001	Traffic Control	lump sum	1		
A-002	Erosion and Sediment Control	lump sum	1		
<b>Roadways</b>					
B-001	Concrete Barrier Curb per OPSP 600.110	m	15		
B-002	Excavation and Removal of Soils	m <sup>3</sup> (P)	675		
B-003	Pavement Markings	m (P)	2094		
B-004	Pavement Marking Symbols	each	2		
B-005	SuperPave 12.5 Level B Asphalt Pavement (PG 58-34)	tonnes	<b>741</b>		
B-006	SuperPave 19.0 Level B Asphalt Pavement (PG 58-34)	tonnes	694		
B-007	Tack Coat	m <sup>2</sup> (P)	740		
B-008	Pulverize Existing Asphalt Pavement	m <sup>2</sup> (P)	5444		
B-009	Removal of Asphalt Pavement (Full Depth)	m <sup>2</sup> (P)	<b>1053</b>		
B-010	Removal of Asphalt Pavement by Dry Grinding	m <sup>2</sup> (P)	739		
B-011	Removal of Concrete Curb	m (P)	15		
B-012	Sawcutting Existing Asphalt Pavement	m (P)	89		
B-013	Supply and Place Granular 'A' Base	tonnes	<b>1203</b>		
B-014	Supply and Place Granular 'B' Type II Sub-base	tonnes	50		
<b>Drainage</b>					
C-001	Adjust Existing CB / MH / WV Frame & Grate	each (P)	8		
C-002	Break into Existing Catchbasin/Maintenance Hole/Sewer	each (P)	4		
C-003	600mm x 600mm PCC Catch basin per OPSP-705.010	each (P)	6		
C-004	200mm dia. PVC Catchbasin Lead - class SDR 35	m (P)	113		
C-005	200mm dia. Perforated Pipe Subdrain	m (P)	39		
C-006	Expanded Polystyrene Insulation, per 50mm thickness	m <sup>2</sup> (P)	15		
<b>Landscaping</b>					
D-001	100mm Topsoil	m <sup>3</sup>	79		
D-002	Hydraulic Seeding and Mulching	m <sup>2</sup>	791		
<b>Electrical</b>					
E-001	Electrical Handholes	each (P)	1		
E-002	50mm Rigid Duct, Direct Buried	m	315		
E-003	#8 AWG Low Voltage Cables, in Ducts	m	1025		
E-004	#6 AWG Insulated Ground Wire	m	335		
E-005	#6 AWG Bare Ground Wire	m	2		
E-006	Ground Electrodes	each (P)	2		
E-007	Power Supply Service Equipment	lump sum	1		
E-008	Aluminum Poles, Base Mounted	each (P)	7		
E-009	Concrete Footings in Earth	each (P)	7		
E-010	Roadway Lighting Luminaires and Bracket Assemblies	each (P)	7		
<b>Sub-Total (excluding H.S.T.)</b>					
<b>H.S.T.</b>					
<b>Total</b>					

**GENERAL NOTES:**  
 1. REINSTATE ALL DISTURBED AREAS WITH 100mm TOPSOIL AND SEED AND MULCH.



No.	Description	By	Date (dd/mm/yy)
0	ISSUED FOR REVIEW	PH	31/03/14
1	ISSUED FOR ADDENDUM	PH	18/05/14

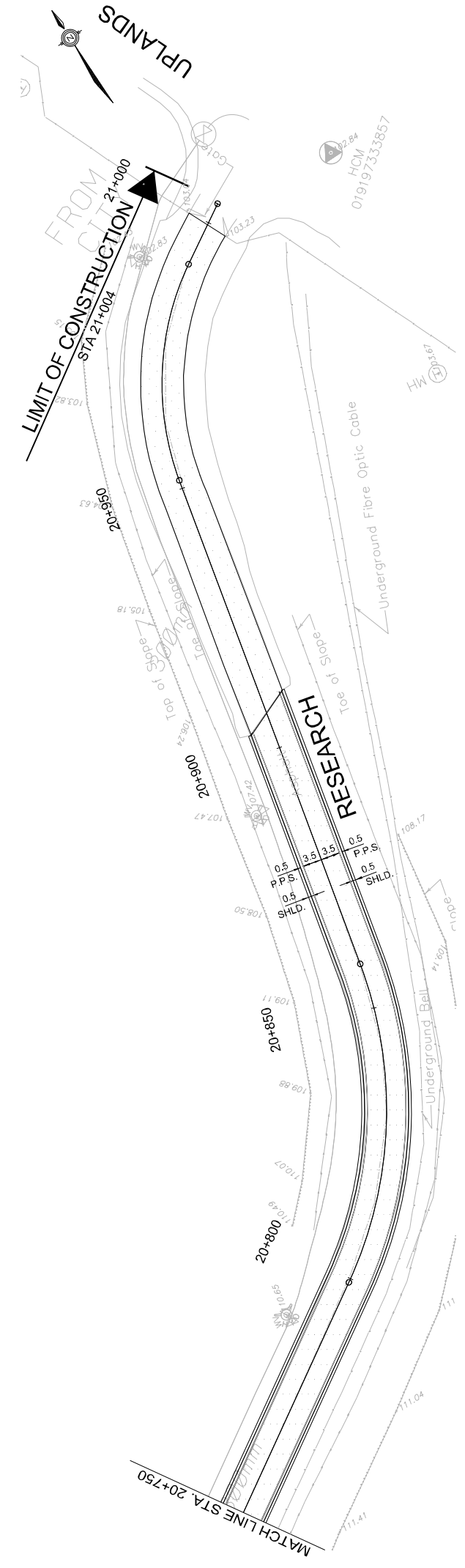
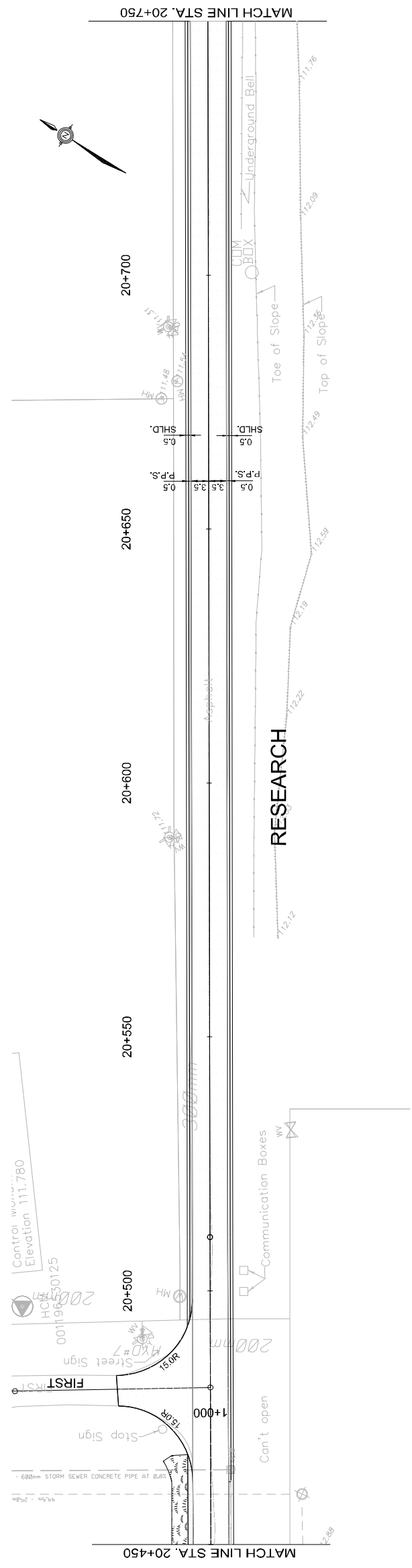
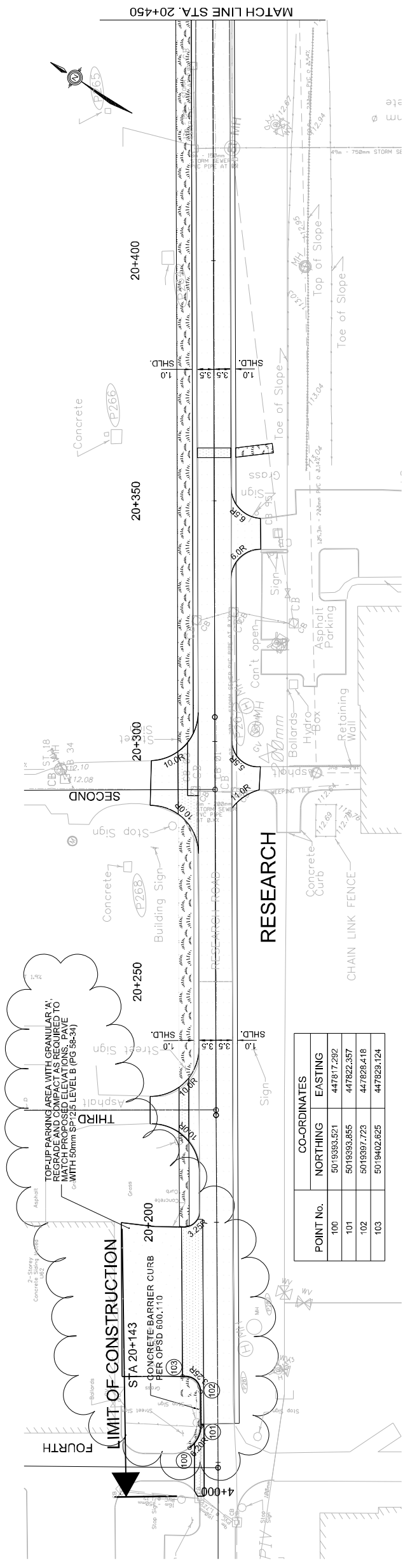
Verify all dimensions and site conditions and be responsible for same  
 Vérifier toutes les dimensions et l'état des lieux et en assumer la responsabilité

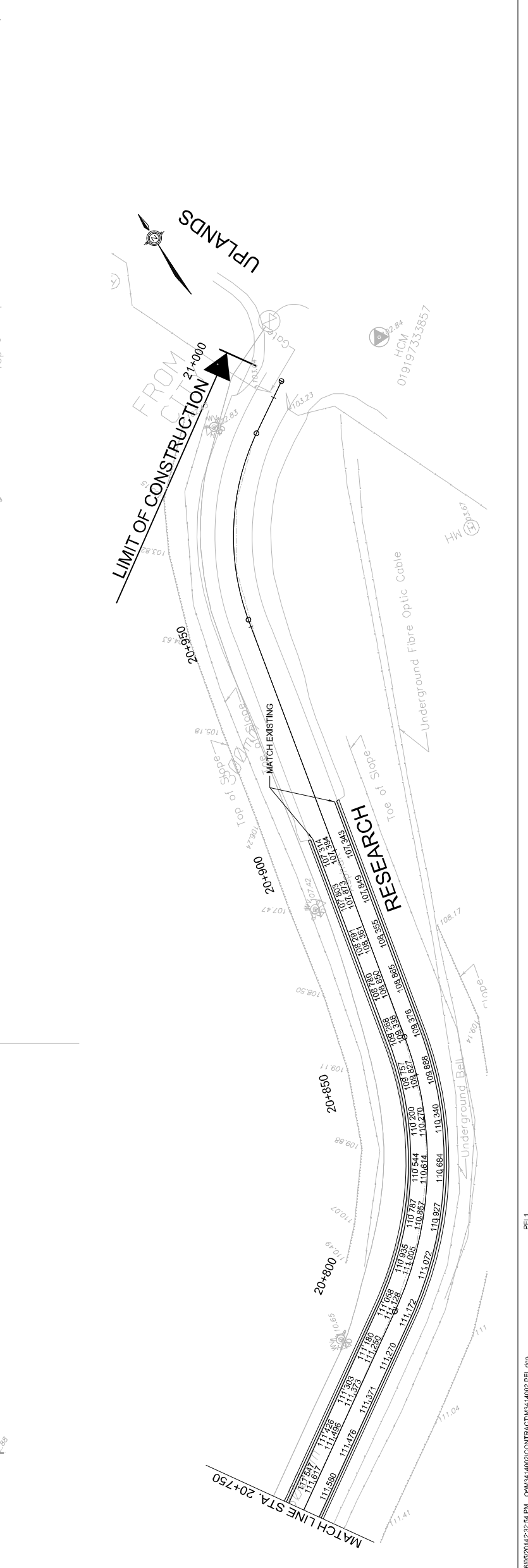
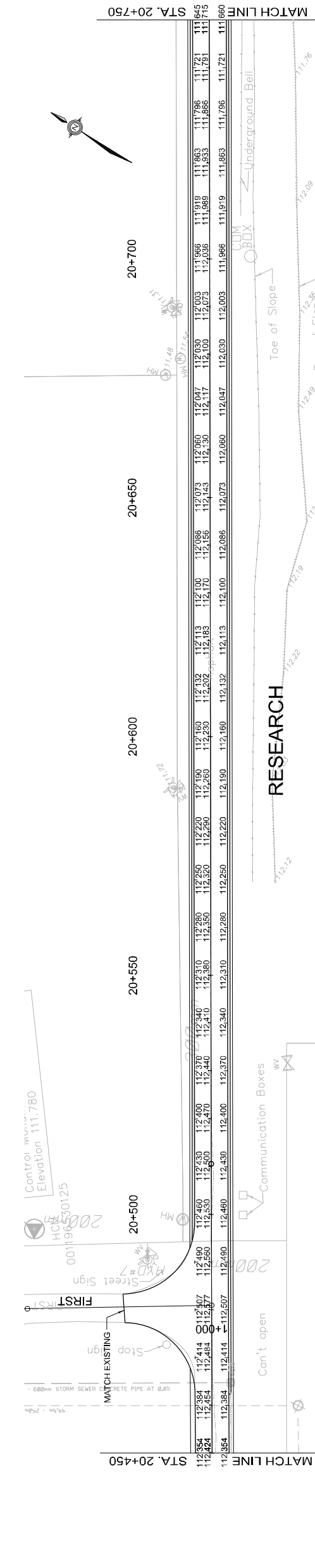
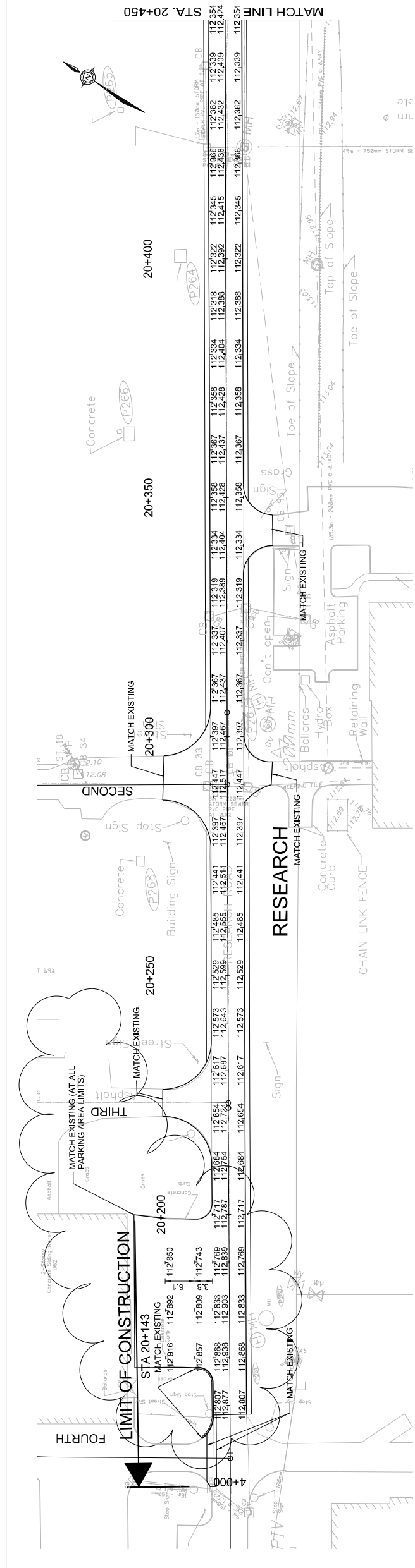


Project		UPLANDS CAMPUS-RESEARCH ROAD REHABILITATION	
Drawing		GEOMETRY AND GENERAL LAYOUT	
designed	JZ.	date	MARCH 2014
drawn	M.S.	scale	1:500
checked	MB.	sheet	F7 of 76
approved	PH.	W.D. no.	C786-SITE
dwg. no.	D-3951-GGL	dessin no.	D-3951-GGL

**LEGEND**

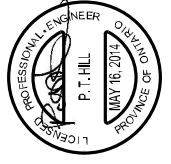
	FULL DEPTH CONSTRUCTION
	SUPERPAVE AS INDICATED
	150mm GRANULAR 'A'
	250mm GRANULAR 'B' TYPE II (MIN.)
	40mm SP12.5 LEVEL B (PG 58-34)
	50mm SP19.0 LEVEL B (PG 58-34)
	50mm SP16.0 LEVEL B (PG 58-34)
	50mm SP13.0 LEVEL B (PG 58-34)
	40mm SP12.5 LEVEL B (PG 58-34)
	LANDSCAPING - 100mm TOPSOIL AND SEED AND MULCH
	CONCRETE CURB





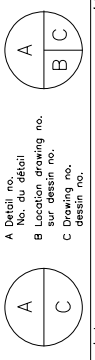
**GENERAL NOTES:**

1. REMOVE AND SALVAGE ALL SIGNAGE AND ALL STREET LIGHTS, TRAFFIC LIGHTS, LEAD AND STREET LIGHTING DUCT TRENCHING AND CATCH BASIN. INSTALLATION REINSTALL SIGNAGE AT SAME LOCATION FOLLOWING CONSTRUCTION.



No.	Description	By (initials)	Date (dd/mm/yy)
0	ISSUED FOR REVIEW	PH	31/03/14
1	ISSUED FOR ADDENDUM	PH	18/05/14

Verify all dimensions and site conditions and be responsible for same  
 Vérifier toutes les dimensions et l'état des lieux et en assumer la responsabilité



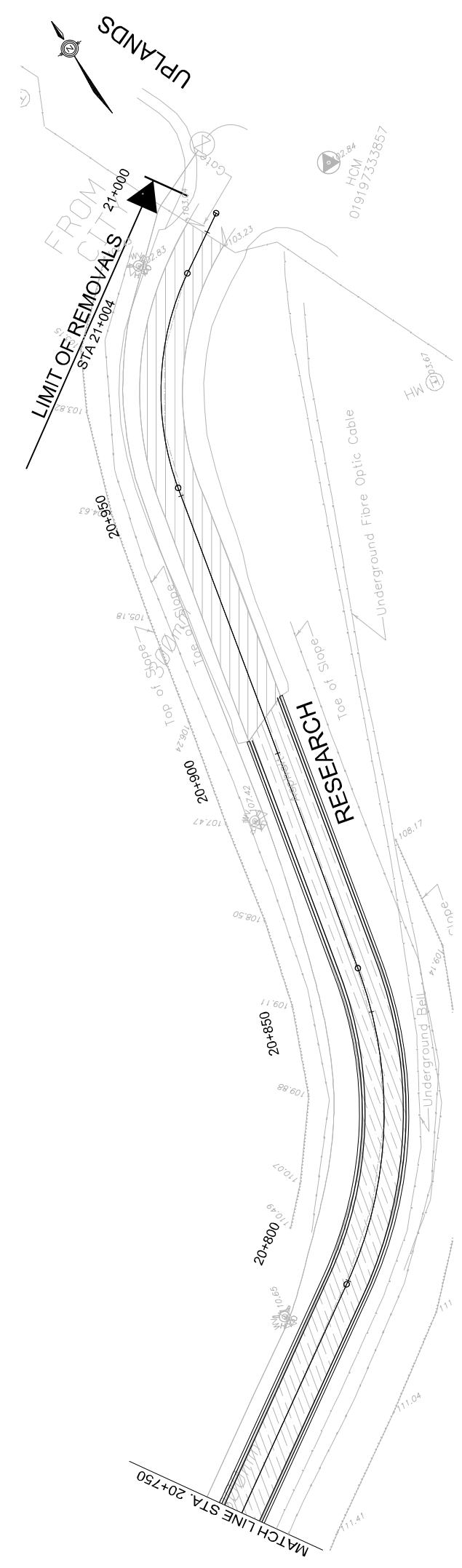
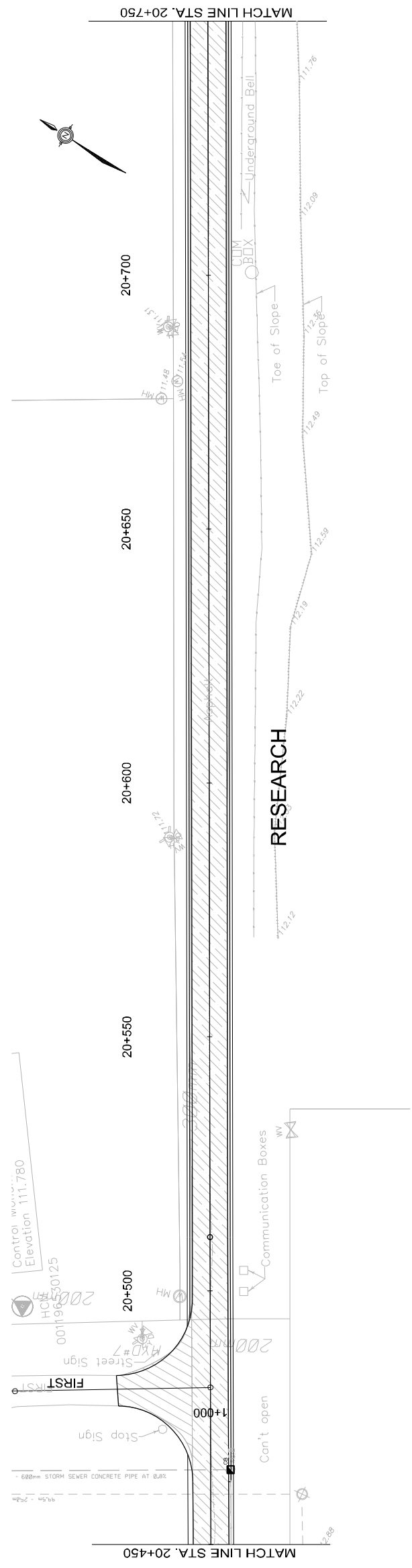
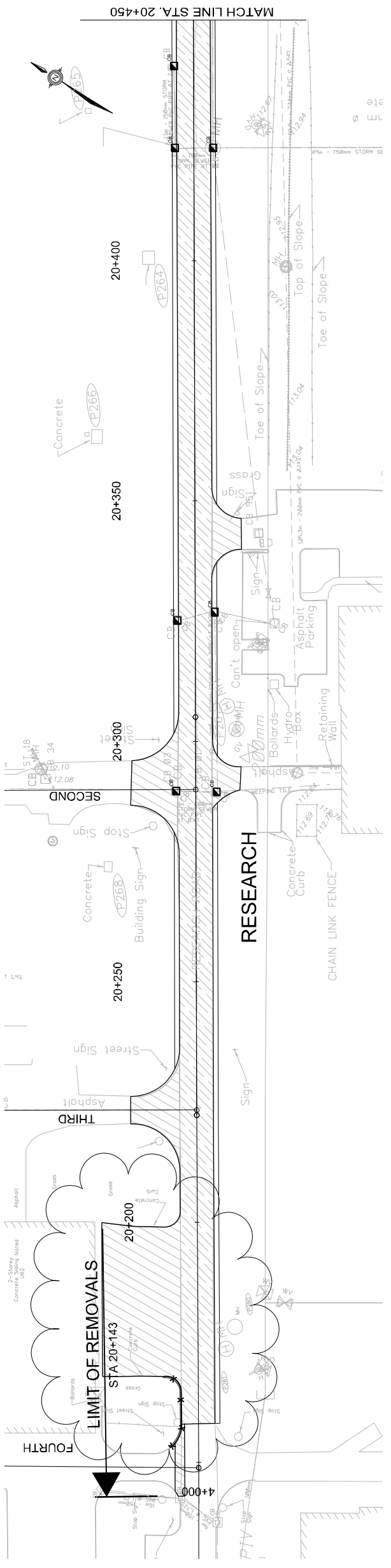
PROJECT  
**UPLANDS CAMPUS-RESEARCH ROAD REHABILITATION**

drawing  
**REMOVALS**

designed	JZ.	date	MARCH 2014	dwg.no.	D-3951-REM
drawn	M.S.	scale	1:500	dessein no.	D-3951-REM
checked	MB.	sheet	R3 of/de R11		
approved	PH	W.D.no.	C786-SITE		

**LEGEND**

- REMOVAL OF ASPHALT FULL DEPTH (STRIPPING)
- REMOVAL OF FULL DEPTH ASPHALT BY PULVERIZING (125mm DEPTH)
- REMOVAL OF ASPHALT PAVEMENT BY DRY GRINDING (40mm DEPTH)
- CB ADJUST CATCH BASIN
- X - X REMOVAL OF CONCRETE CURB

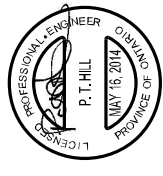


**GENERAL NOTES:**

1. REFER TO PAVEMENT ELEVATIONS DRAWING FOR FINISHED GRADES.
2. REINSTATE ALL DISTURBED AREAS WITH 100mm TOPSOIL AND SEED AND MULCH.

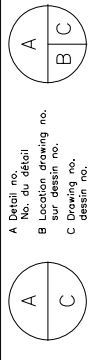
**NOTES:**

1. EXCAVATE EXISTING SHOULDER AND REMOVE ACCORDING TO PROPOSED SHOULDER.



No.	Description	By	Date (dd/mm/yy)
0	ISSUED FOR REVIEW	PH	31/03/14
1	ISSUED FOR ADDENDUM	PH	18/05/14

- o Verify all dimensions and site conditions and be responsible for same
- o Vérifier toutes les dimensions et l'état des lieux et en assumer la responsabilité

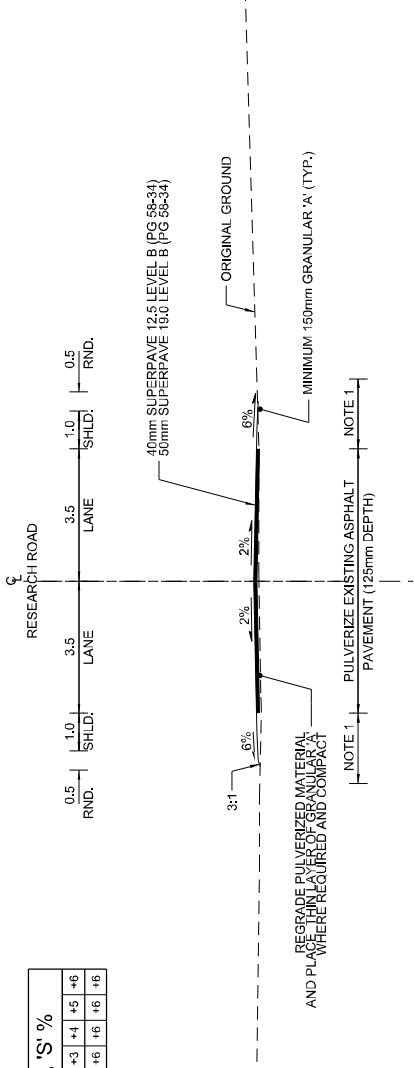


PROJECT  
**UPLANDS CAMPUS-RESEARCH ROAD REHABILITATION**

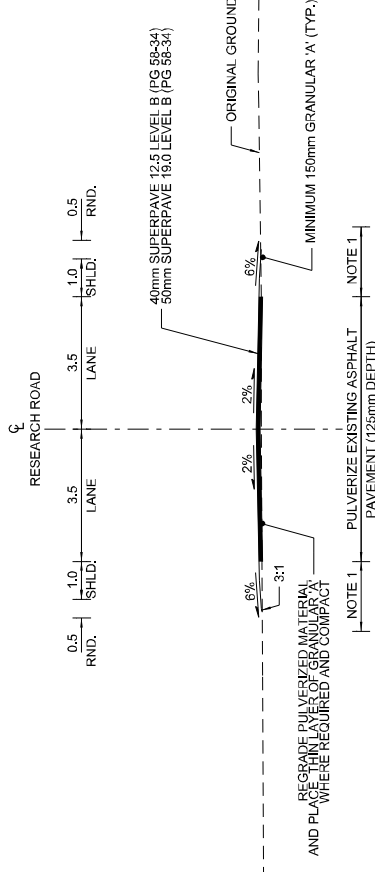
drawing  
**TYPICAL SECTIONS AND DETAILS**

designed	conçu	date	dwg.no.
JZ.	MARCH 2014	D-3951-TS 1	
drawn	dessiné	scale	échelle
M.S.		1:100	
checked	vérifié	sheet	feuille
MB.	R9	of/de	R11
approved	approuvé	W.O.no.	D.T.no.
PH		C786-SITE	
dwg.no.	dessin no.		
D-3951-TS 1			

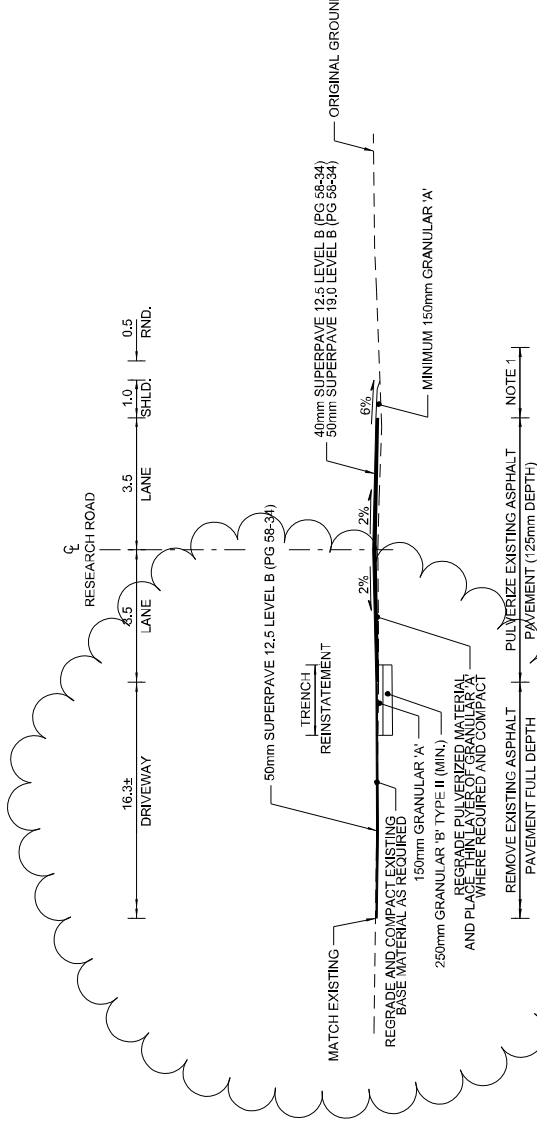
SUPERELEVATION TABLE, 'S' %												
PAVEMENT	-6	-4	-3	-2	-1	0	+1	+2	+3	+4	+5	+6
SHOULDER	+2	+2	+2	+3	+3	+4	+5	+6	+6	+6	+6	+6



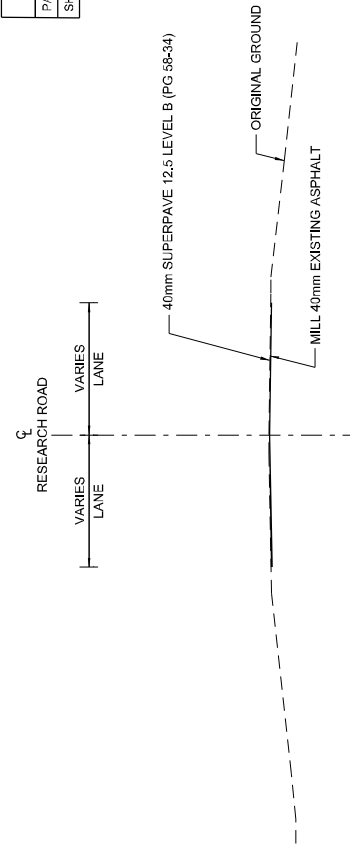
**20+370  
 RESEARCH ROAD - SECOND TO FIRST**



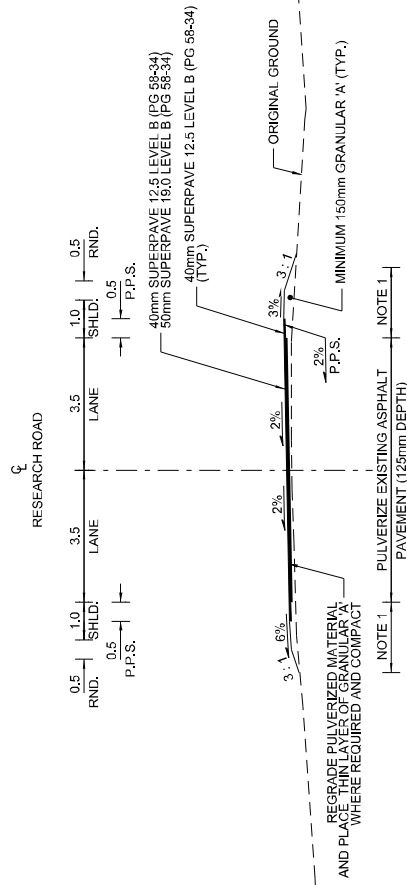
**20+250  
 RESEARCH ROAD - SECOND TO FIRST**



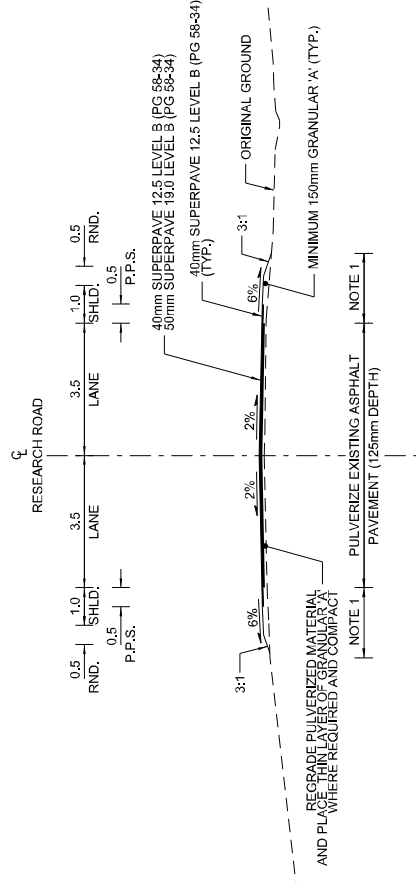
**20+180  
 RESEARCH ROAD - FOURTH TO THIRD**



**20+920  
 RESEARCH ROAD - FIRST TO UPLANDS**



**20+820  
 RESEARCH ROAD - FIRST TO UPLANDS  
 REVERSE CROWN**



**20+650  
 RESEARCH ROAD - FIRST TO UPLANDS  
 TANGENT**