

GENERAL PROJECT NOTES:

1. HEATING PLANT TO REMAIN OPERATIONAL DURING CONSTRUCTION PERIOD. REFER TO SPECIFICATIONS FOR RECOMMENDED SEQUENCE OF DEMOLITION AND CONSTRUCTION ACTIVITIES.
2. NOT ALL OBSTRUCTIONS AND REQUIRED OFFSETS ARE INDICATED ON DRAWINGS. CONTRACTOR TO PROVIDE AS REQUIRED TO ACCOMMODATE SITE CONDITIONS.

GENERAL ELECTRICAL CONTROLS & INSTRUMENTATION DRAWING NOTES:

1. R&R AUTOMATION SHALL BE SUBCONTRACTED TO PROVIDE, SUPPLY, INSTALL, COMMISSION AND INTEGRATE ALL ELECTRICAL, CONTROLS AND INSTRUMENTATION REQUIREMENTS FOR NEW AND RELOCATED DEVICES WITH THE EXISTING HEATING PLANT DIRECT DIGITAL CONTROL SYSTEM. R&R AUTOMATION CONTACT: KEVIN NAUSS (613) 692-6058.
2. R&R SHALL BE RESPONSIBLE FOR PROVISION OF ALL REQUIRED CONDUIT, ELECTRICAL POWER CONNECTIONS AND CONTROL WIRING NECESSARY TO ACCOMMODATE ALL EQUIPMENT, CONTROLS AND INSTRUMENTATION DEVICES REQUIRED TO ENSURE HEATING PLANT OPERATION REMAINS SATISFACTORY TO HEATING PLANT OPERATIONS STAFF.
3. EXISTING GRAPHICS TO BE UPDATED TO INCORPORATE ALL NEW AND RELOCATED POINTS AS PER NRC STANDARD.
4. ALL ELECTRICAL POWER CONNECTIONS, CONTROLS, INSTRUMENTATION WIRING AND CONDUITS SHALL BE APPROPRIATELY TAGGED AS PER THE NRC STANDARD.
5. R&R AUTOMATION TO PROVIDE ELECTRONIC AS-BUILTS IN CADD AND PDF FORMAT FOR STORAGE ON THE ASPM SERVER AND PROVIDE ALL REQUIRE DOCUMENTATION TO THE GENERAL CONTRACTOR FOR INCLUSION IN THE MAINTENANCE MANUALS.

DRAWING LIST	
DRAWING NO.	DRAWING NAME
D-3562-G00	DRAWING LIST, LEGEND AND LEGEND
D-3562-G01	PARTIAL BASEMENT – DEMOLITION
D-3562-G02	PARTIAL BASEMENT – NEW WORK AND DETAILS
D-3562-G03	PARTIAL BASEMENT – NEW WORK AND DETAILS
D-3562-G04	PARTIAL 1ST FLOOR – DEMOLITION
D-3562-G05	PARTIAL 1ST FLOOR – DEMOLITION
D-3562-G06	PARTIAL 1ST FLOOR – NEW WORK AND DETAILS
D-3562-G07	PARTIAL 2ND FLOOR – DEMOLITION
D-3562-G08	PARTIAL 2ND FLOOR ABOVE MEZZANINE – NEW WORK AND DETAILS
D-3562-G09	PARTIAL 2ND FLOOR BELOW MEZZANINE – NEW WORK AND DETAILS
D-3562-G10	PARTIAL 2ND FLOOR – NEW WORK AND DETAILS
D-3562-G11	PARTIAL 3RD FLOOR – DEMOLITION
D-3562-G12	PARTIAL 3RD FLOOR – NEW WORK AND DETAILS
D-3562-G13	PIPING SCHEMATIC – DEMOLITION
D-3562-G14	PIPING SCHEMATIC – NEW WORK

DRAWING SYMBOLS LEGEND	
	TYPICAL EXISTING
	TYPICAL NEW
	TYPICAL DEMOLITION / REMOVALS
	CONNECT TO EXISTING
	CUT BACK / DEMOLISH TO LOCATION
	EXISTING TO BE REMOVED AND HANDED OVER TO NRC OR RE-INSTALLED
	VENT
	PUMPED CONDENSATE
	CONDENSATE
	OVERFLOW
	BOILER MAKE-UP
	BOILER FEEDWATER
	DOMESTIC COLD WATER
	SAFETY RELIEF
	LOW PRESSURE STEAM ( <15 PSIG)
	DIRECTION OF FLOW
	VALVE (IN PLAN)
	VALVE (VERTICAL ORIENTATION)
	CONTROL VALVE
	CHECK VALVE
	DOUBLE BACKFLOW PREVENTER
	PUMP
	CAP
	PIPE DN / INTO PAGE
	PIPE UP / OUT OF PAGE
	FLEXIBLE CONNECTION
	STRAINER
	PIPE GUIDE
	PIPE ANCHOR
	LEVEL TRANSMITTER
	RESISTANCE TEMPERATURE DETECTOR
	LOW LIMIT SWITCH
	PRESSURE SENSOR
	PRESSURE GAUGE
	TEMPERATURE GAUGE
	DISCONNECT
	ON/OFF BUTTON
	HEATING PLANT EQUIPMENT IDENTIFICATION
	POINT OF REFERENCE
	HARDWARE CONNECTION (ELECTRICAL)
	CONDUIT/CABLE UP
	CONDUIT/CABLE DOWN
	MOTOR CONTROL CENTER
	VARIABLE FREQUENCY DRIVE
	FLOOR DRAIN

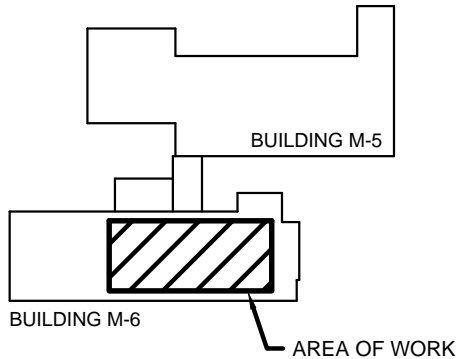
CONDENSATE PUMP SCHEDULE										
No.	LOCATION	PUMP TYPE	IMPELLER MATERIAL	FLOW (GPM)	HEAD (FT)	VOLTAGE	AMPS	WEIGHT (LBS)	HORSE POWER	REMARKS
HPHOP06	BASEMENT RM B112	CENTRIFUGAL	–	85	200	575/3/60	–	–	10	EXISTING TO BE REMOVED
HPHOP07	BASEMENT RM B112	CENTRIFUGAL	–	85	200	575/3/60	–	–	10	EXISTING TO BE REMOVED
HPHOP08	BASEMENT RM B112	CENTRIFUGAL	–	85	200	575/3/60	–	–	10	EXISTING TO BE REMOVED
HPHOP01	BASEMENT RM B118A	CENTRIFUGAL	–	85	200	575/3/60	–	–	10	EXISTING TO BE REMOVED
HPHOP02	BASEMENT RM B118A	CENTRIFUGAL	–	85	200	575/3/60	–	–	10	EXISTING TO BE REMOVED
HPHOP03	BASEMENT RM B118A	CENTRIFUGAL	–	85	200	575/3/60	–	–	10	EXISTING TO BE REMOVED
HPCOP01	BASEMENT RM B118	CENTRIFUGAL	–	85	75	575/3/60		195	5	NEW, MODEL 2x2x9-1/2B
HPCOP02	BASEMENT RM B118	CENTRIFUGAL	–	85	75	575/3/60	–	195	5	NEW, MODEL 2x2x9-1/2B
HPHOP01	MEZZANINE	CENTRIFUGAL	–	85	30	575/3/60	–	180	1.5	NEW, MODEL 2x2x7 C/W VFD
HPHOP02	MEZZANINE	CENTRIFUGAL	–	85	30	575/3/60	–	180	1.5	NEW, MODEL 2x2x7 C/W VFD
HPHOP03	MEZZANINE	CENTRIFUGAL	–	85	30	575/3/60	–	180	1.5	NEW, MODEL 2x2x7 C/W VFD
<b>NOTE:</b> 1. HAND OVER TWO (2) EXISTING PUMPS TO NRC DEPARTMENTAL AS SPARE. 2. NEW PUMP MODELS SELECTIONS BASED ON BELL & GOSSETT SERIES 80 CENTRIFUGAL PUMPS. 3. VFDs TO BE PROVIDED BY CONTROLS CONTRACTOR.										



GENERAL NOTES:

1. DRAWINGS TO BE READ IN CONJUNCTION WITH ALL CONTRACT DRAWINGS AND PROJECT SPECIFICATIONS.
2. DRAWINGS INDICATE GENERAL ROUTING OF SERVICES ONLY. CONTRACTOR TO BE RESPONSIBLE TO PROVIDE ANY ADDITIONAL LABOUR AND MATERIALS REQUIRED TO OFFSET AROUND EXISTING BUILDING FEATURES AND SERVICES TO AVOID INTERFERENCES.
3. CONTRACTOR TO VERIFY ALL DIMENSIONS AND CLEARANCES ON SITE PRIOR TO DEMOLITION OR CONSTRUCTION AND REPORT ANY DISCREPANCIES OR OMISSIONS TO DEPARTMENTAL REPRESENTATIVE.
4. CONTRACTOR TO VISIT SITE AND FULLY FAMILIARIZE THEMSELVES WITH THE SCOPE OF WORK PRIOR TO PROJECT COMMENCEMENT.
5. ALL TRADES TO COORDINATE WORK ON SITE TO AVOID ANY CONFLICTS AND/OR INTERFERENCES.
6. ANY AND ALL REQUIRED SHUTDOWNS SHALL BE COORDINATED WITH DEPARTMENTAL REPRESENTATIVE.
7. ALL EQUIPMENT AND SYSTEM INSTALLATIONS SHALL BE IN ACCORDANCE WITH NATIONAL BUILDING CODE AND NATIONAL PLUMBING CODE AS APPLICABLE.
8. ALL EQUIPMENT AND SYSTEM INSTALLATIONS SHALL BE IN ACCORDANCE WITH MANUFACTURERS RECOMMENDATIONS.
9. DO NOT SCALE DRAWINGS.

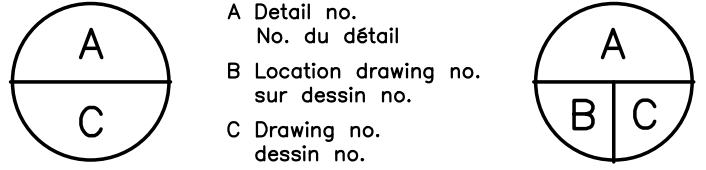
KEYPLAN




0	22 05 2014	ISSUED FOR TENDER	ALS
No.	Date	Revision	By: For:

Date Printed 22 05 2014 Date imprimée

- o Verify all dimensions and site conditions and be responsible for same
- o Vérifier toutes les dimensions et l'état des lieux et en assumer la responsabilité



project project

M-06 HOT WELL PIPING REPLACEMENT

MONTREAL ROAD CAMPUS

drawing dessin

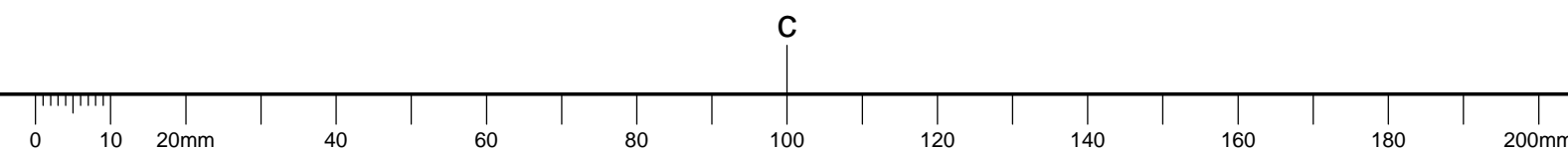
DRAWING LIST, LEGEND AND SCHEDULES

designed	conçu	date	date
ALS/CYC		APR 2014	
drawn	dessiné	scale	échelle
RCAS/ALS/CYC		AS SHOWN	
checked	vérifié	sheet	feuille
RGC/BV		G00 of/de	G14
approved	approuvé	W.O.no.	D.T.no.
BV		9100029897	

dwg.no. dessin no.

3562-G00





3562-G01

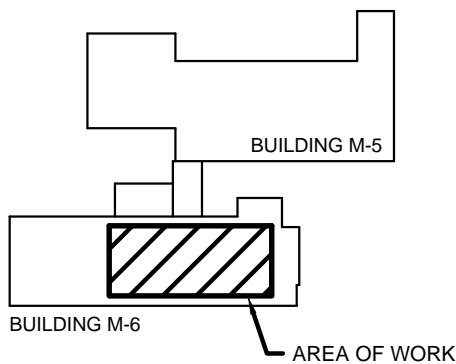






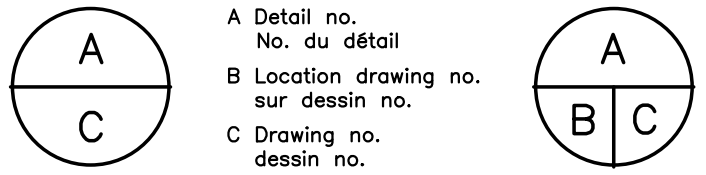
- GENERAL NOTES:
- DRAWINGS TO BE READ IN CONJUNCTION WITH ALL CONTRACT DRAWINGS AND PROJECT SPECIFICATIONS.
  - DRAWINGS INDICATE GENERAL ROUTING OF SERVICES ONLY. CONTRACTOR TO BE RESPONSIBLE TO PROVIDE ANY ADDITIONAL LABOUR AND MATERIALS REQUIRED TO OFFSET AROUND EXISTING BUILDING FEATURES AND SERVICES TO AVOID INTERFERENCES.
  - CONTRACTOR TO VERIFY ALL DIMENSIONS AND CLEARANCES ON SITE PRIOR TO DEMOLITION OR CONSTRUCTION AND REPORT ANY DISCREPANCIES OR OMISSIONS TO DEPARTMENTAL REPRESENTATIVE.
  - CONTRACTOR TO VISIT SITE AND FULLY FAMILIARIZE THEMSELVES WITH THE SCOPE OF WORK PRIOR TO PROJECT COMMENCEMENT.
  - ALL TRADES TO COORDINATE WORK ON SITE TO AVOID ANY CONFLICTS AND/OR INTERFERENCES.
  - ANY AND ALL REQUIRED SHUTDOWNS SHALL BE COORDINATED WITH DEPARTMENTAL REPRESENTATIVE.
  - ALL EQUIPMENT AND SYSTEM INSTALLATIONS SHALL BE IN ACCORDANCE WITH NATIONAL BUILDING CODE AND NATIONAL PLUMBING CODE AS APPLICABLE.
  - ALL EQUIPMENT AND SYSTEM INSTALLATIONS SHALL BE IN ACCORDANCE WITH MANUFACTURERS RECOMMENDATIONS.
  - DO NOT SCALE DRAWINGS.

KEYPLAN



0	22 05 2014	ISSUED FOR TENDER	ALS
No.	Date	Revision	By: Par:
Date Printed 22 05 2014		Date imprimée	

- Verify all dimensions and site conditions and be responsible for same
- Vérifier toutes les dimensions et l'état des lieux et en assumer la responsabilité



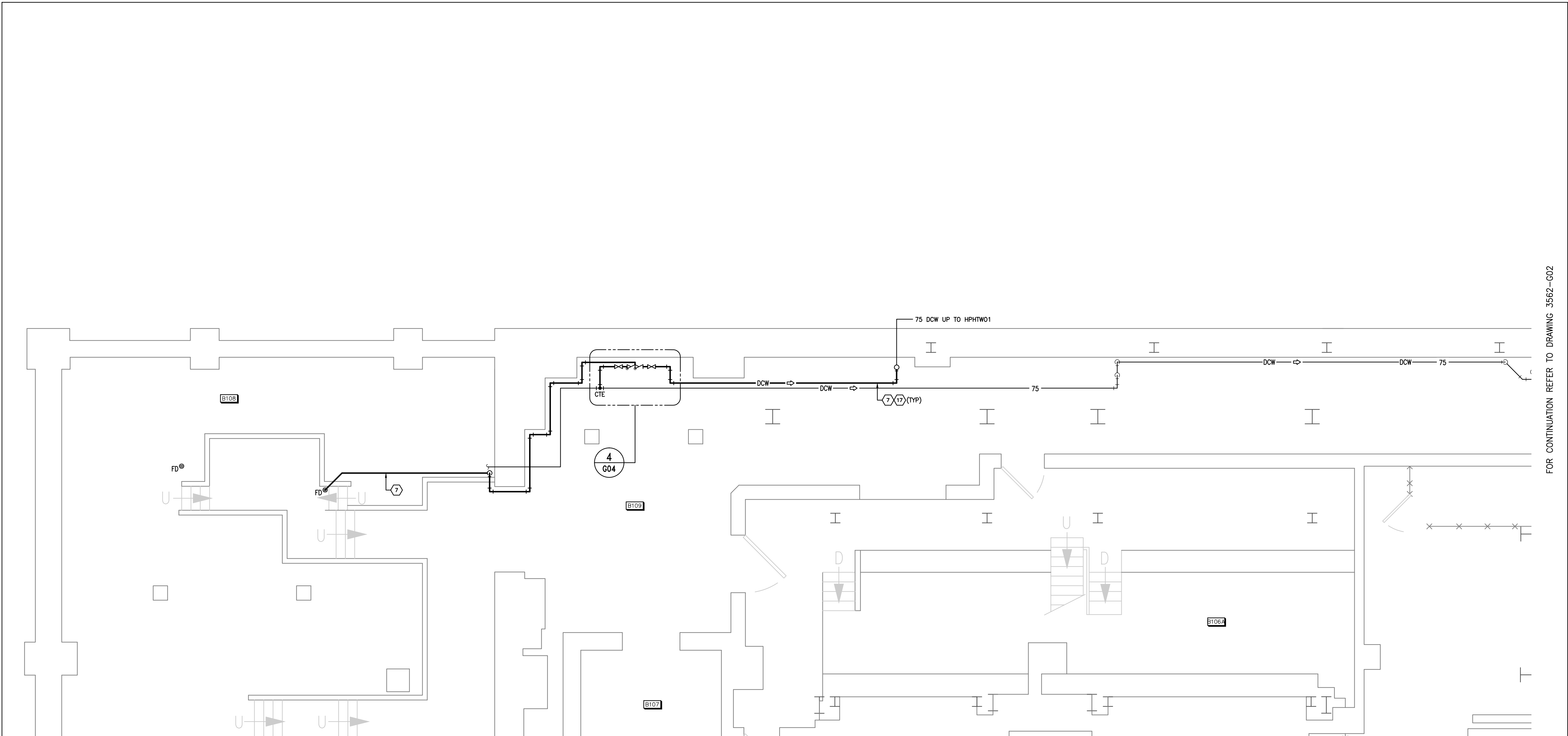
project project  
**M-06 HOT WELL PIPING REPLACEMENT**

drawing dessin  
**MONTREAL ROAD CAMPUS**

PARTIAL BASEMENT  
NEW WORK AND DETAILS

designed <b>ALS/CYC</b>	conçu	date <b>APR 2014</b>	date
drawn <b>RCAS/ALS/CYC</b>	dessiné	scale <b>AS SHOWN</b>	échelle
checked <b>RGC/BV</b>	vérifié	sheet <b>G03</b>	of/de <b>G14</b>
approved <b>BV</b>	approuvé	W.O.no. <b>9100029897</b>	D.T.no.

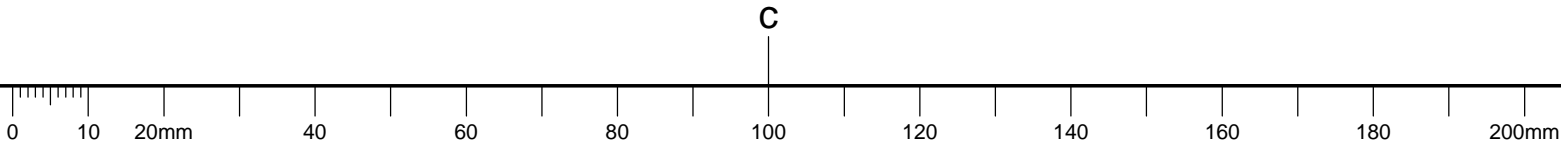
dwg.no. dessin no.  
**3562-G03**



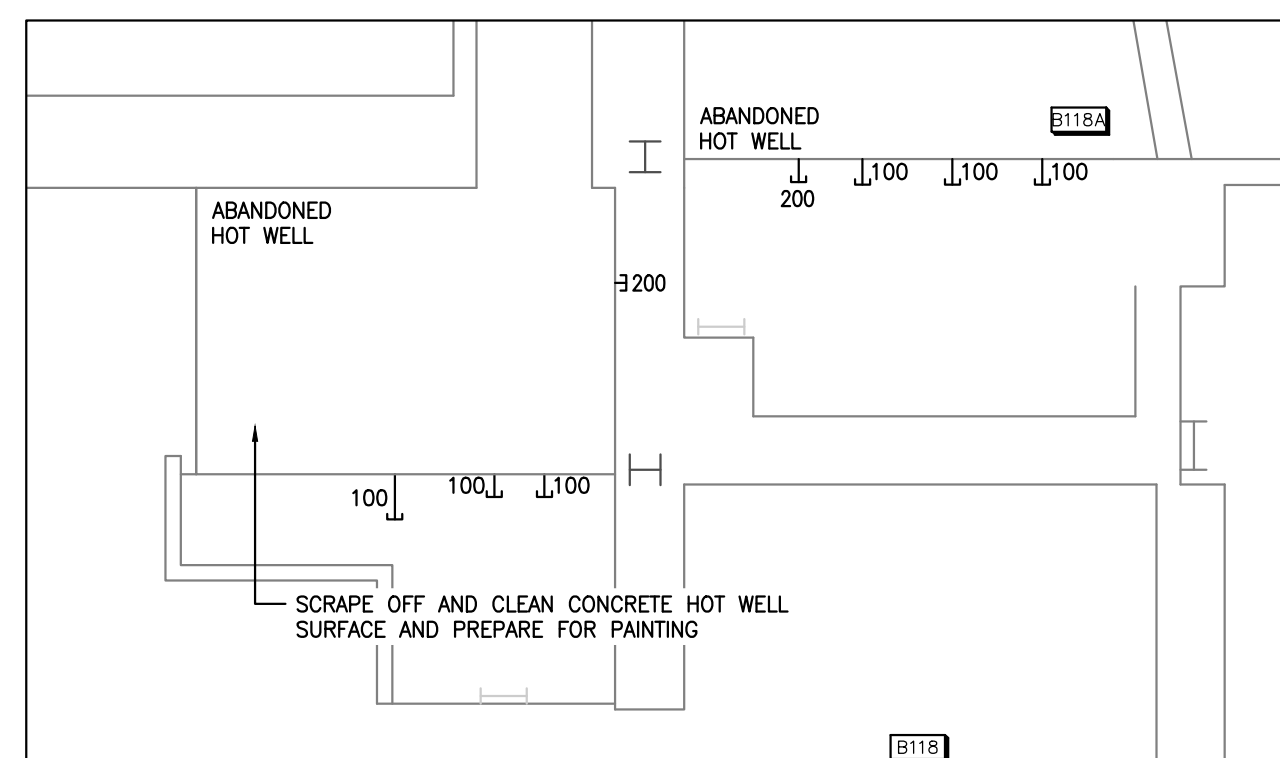
FOR CONTINUATION REFER TO DRAWING 3562-G02

**1**  
**G03** **PARTIAL BASEMENT LAYOUT - NEW WORK**  
SCALE 1/50

MECHANICAL NEW WORK NOTES: (X)  
REFER TO DRAWING 3562-G02 FOR MECHANICAL DRAWING NOTES.



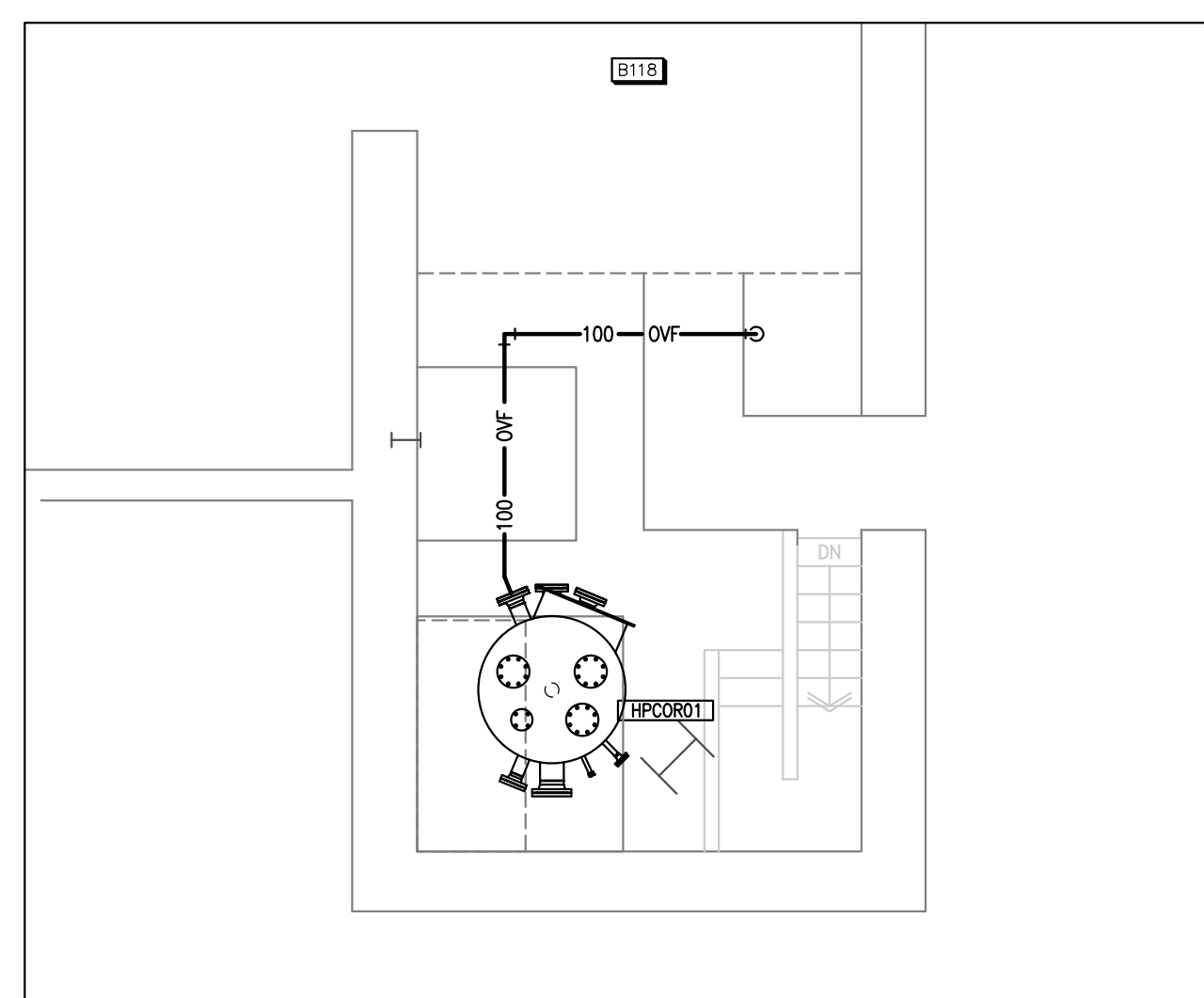




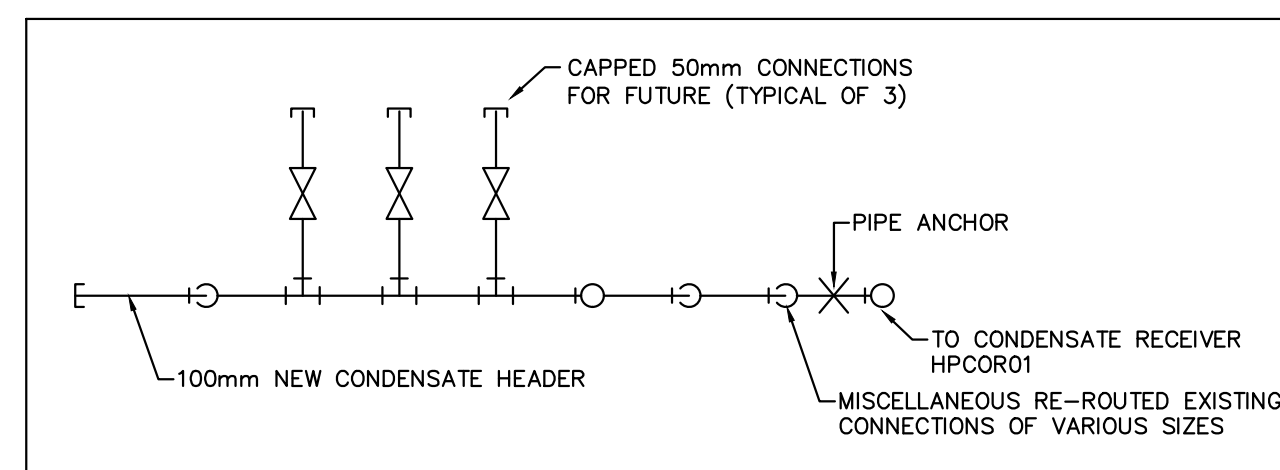
1  
G04

EXISTING HOT WELL LAYOUT (LOWER LEVEL)

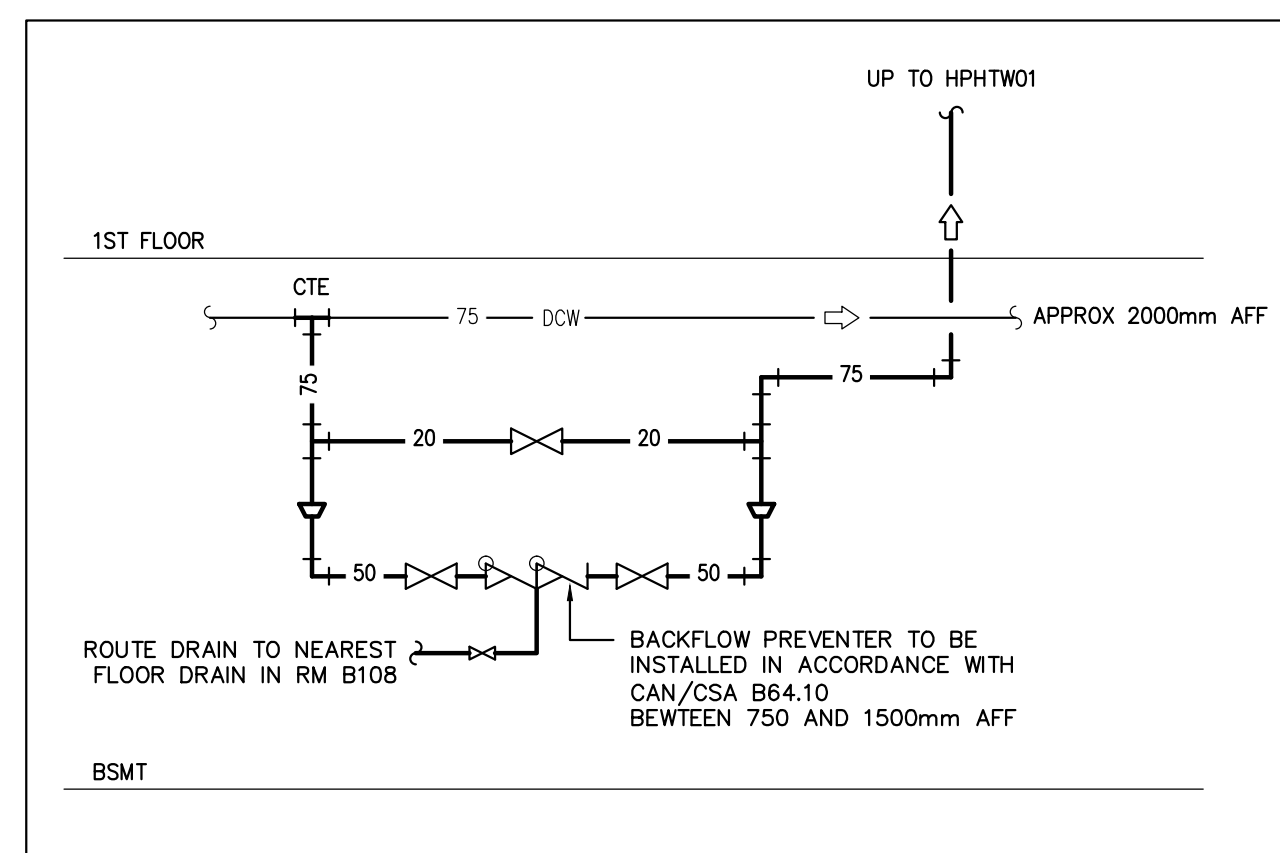
SCALE 1/50



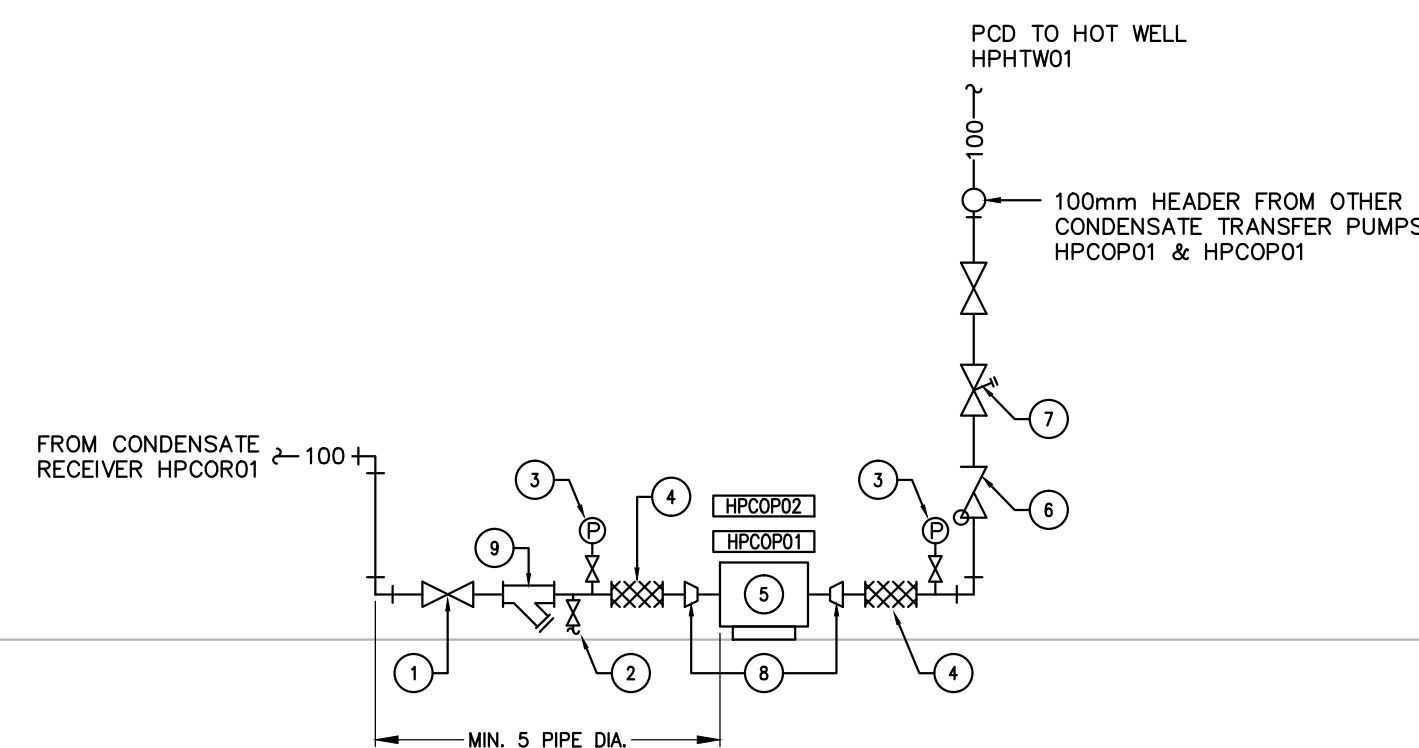
2 OVERFLOW CONNECTION FROM CONDENSATE RECEIVER HPCOR01  
G04 SCALE 1:50



3 NEW CONDENSATE HEADER  
G04 NTS



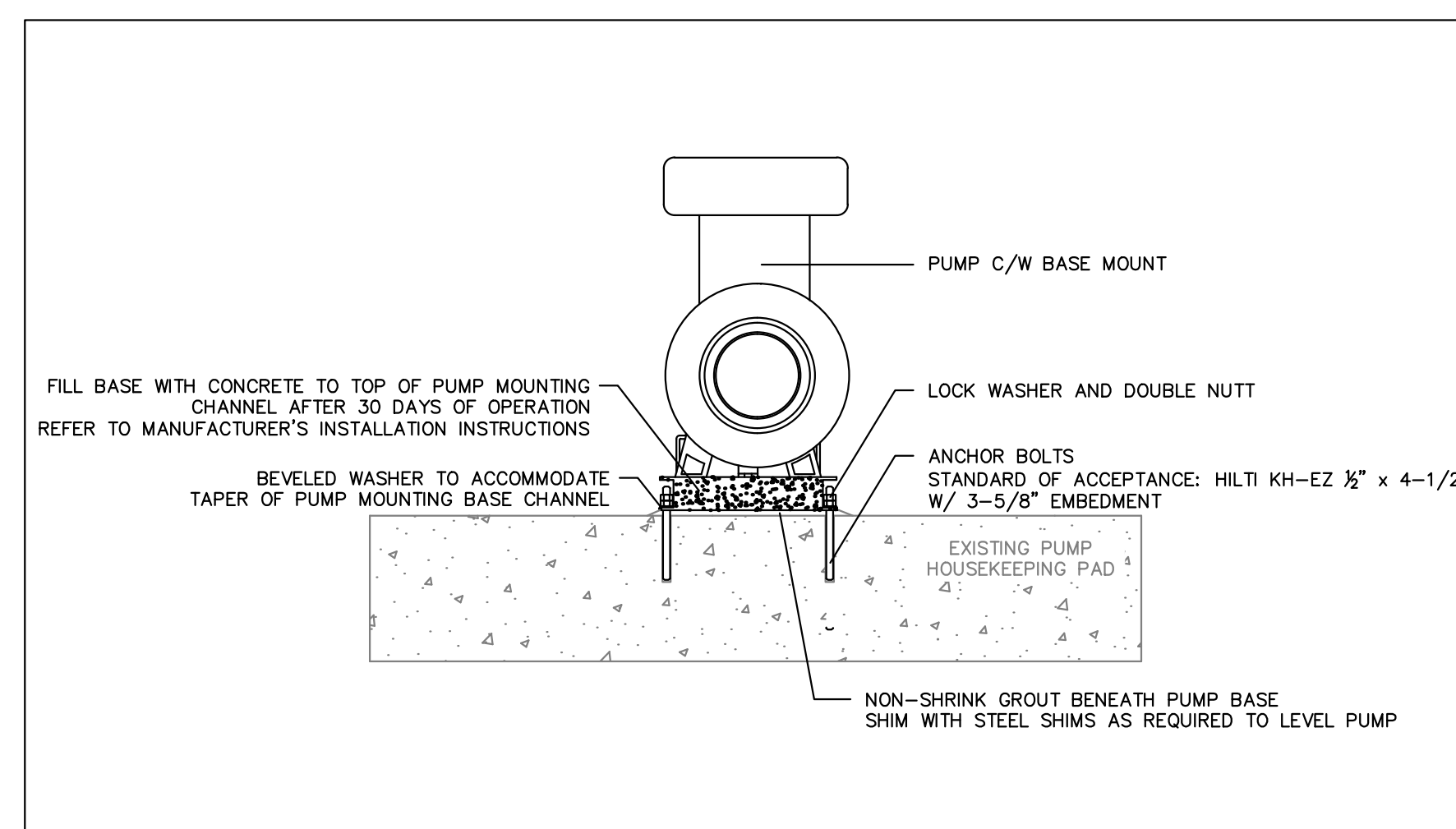
4 NEW DOMESTIC COLD WATER CONNECTION  
G04 NTS



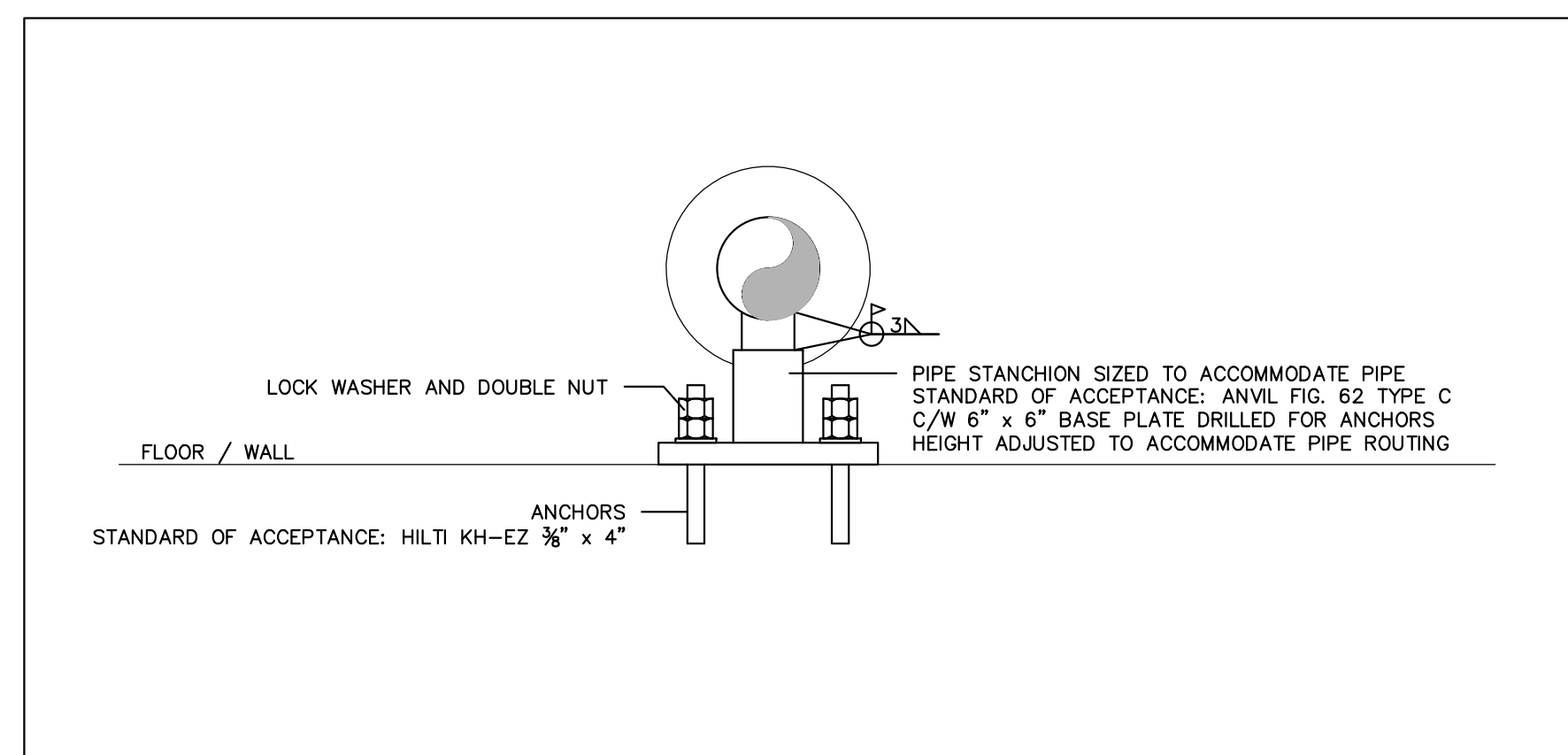
DETAIL NOTES:

1. ISOLATION VALVE.
2. DRAIN VALVE C/W PIPING ROUTED TO NEAREST FLOOR DRAIN OR SUMP PIT.
3. PRESSURE INDICATING GAUGES C/W VALVES. TO BE CAPABLE OF READING VACUUM PRESSURES.
4. NEW FLEXIBLE CONNECTORS. MINIMUM 300mm LENGTH.
5. NEW CONDENSATE TRANSFER PUMPS HPCOP01 & HPCOP02.
6. CHECK VALVE.
7. TRIPLE DUTY VALVE.
8. PIPING REDUCER 100x50 (4"x2"). LOCATED ADJACENT PUMPS.
9. STRAINER.

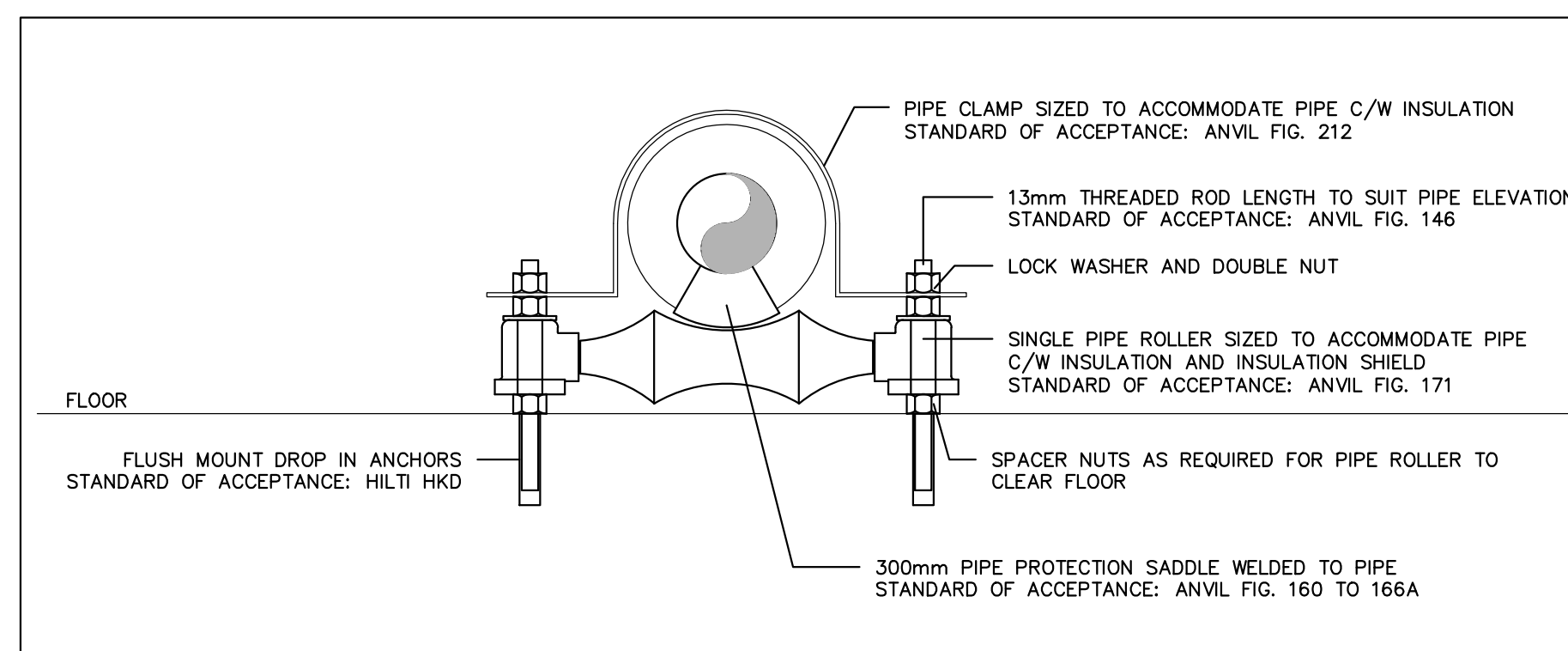
5 TYPICAL CONDENSATE PUMP CONNECTION SCHEMATIC (HPCOP01/HPCO02)  
G04 NTS



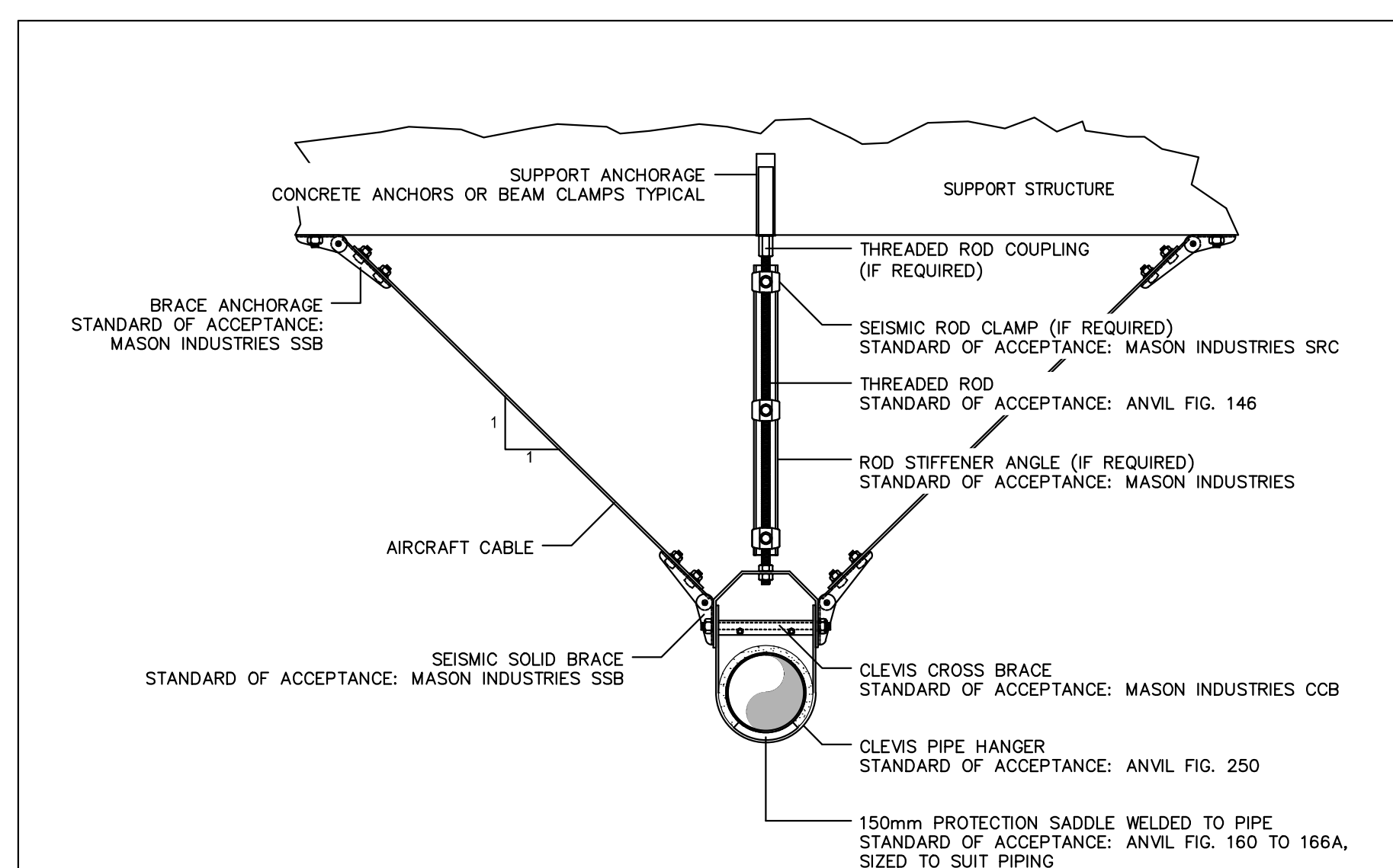
6 TYPICAL BASE MOUNT PUMP INSTALLATION (HPCOP01/HPCOP02)  
G04 NTS



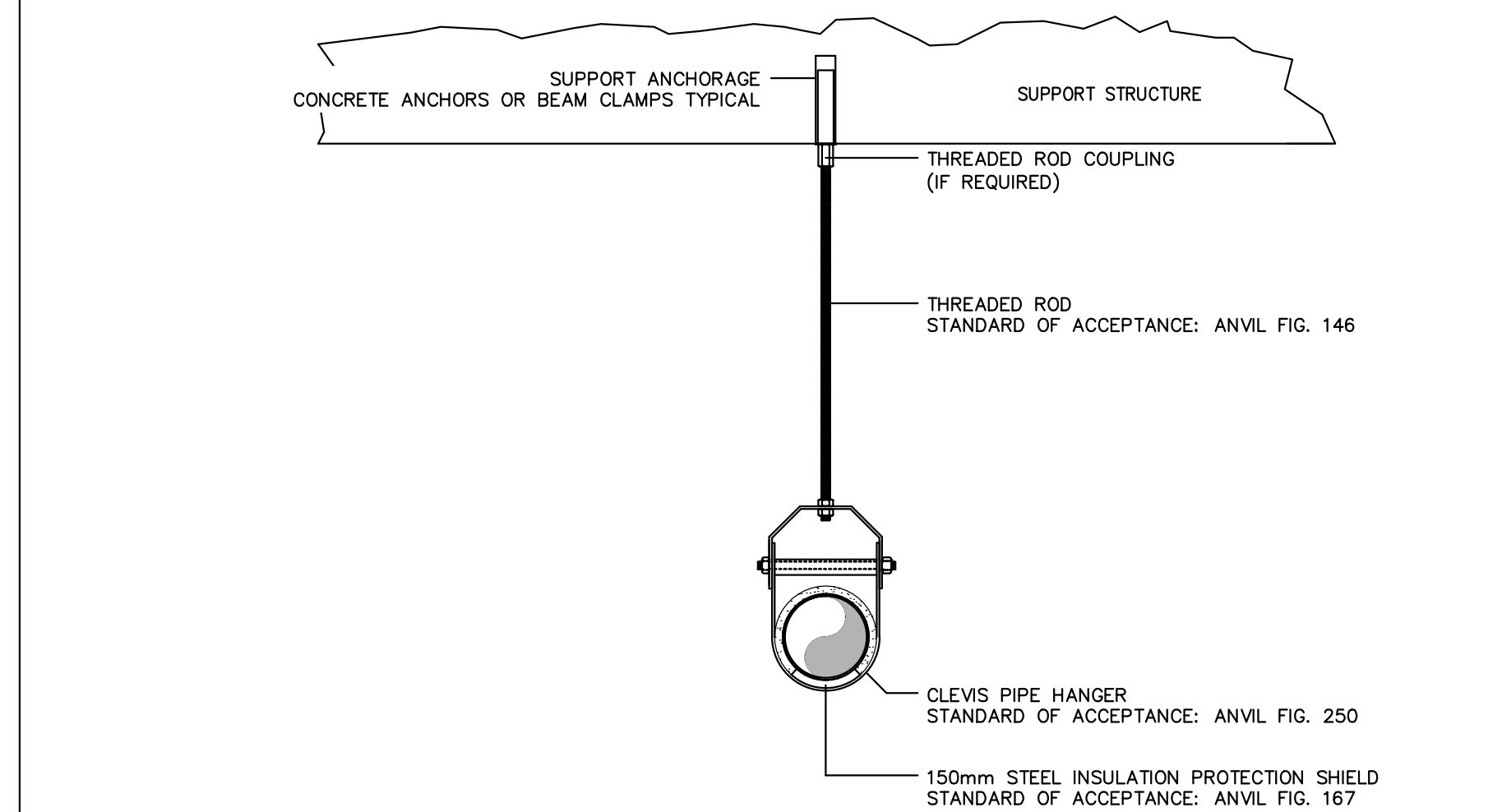
7 TYPICAL BASE MOUNT PIPE ANCHOR  
G04 NTS



8 TYPICAL BASE MOUNT PIPE GUIDE  
G04 NTS



CLEVIS HANGER  
FOR PIPES GRATER THAN 65mm



CLEVIS HANGER  
FOR PIPES LESS THAN 65mm

9  
G04

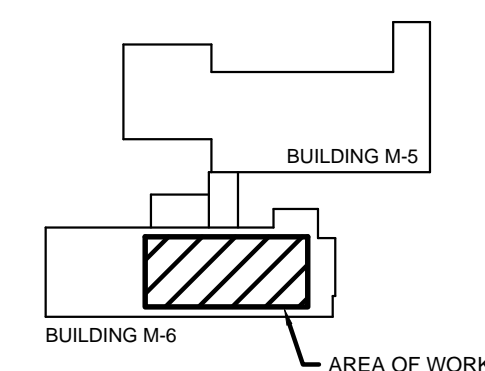
TYPICAL PIPE HANGER DETAILS

NTS

GENERAL NOTES:

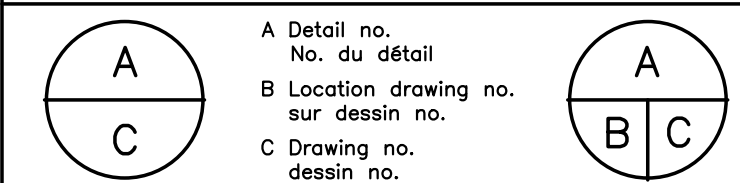
1. DRAWINGS TO BE READ IN CONJUNCTION WITH ALL CONTRACT DRAWINGS AND PROJECT SPECIFICATIONS.
2. DRAWINGS INDICATE GENERAL ROUTING OF SERVICES ONLY. CONTRACTOR TO BE RESPONSIBLE TO PROVIDE ANY ADDITIONAL LABOUR AND MATERIALS REQUIRED TO OFFSET ANY EXISTING BUILDING FEATURES AND SERVICES TO AVOID INTERFERENCES.
3. CONTRACTOR TO VERIFY ALL DIMENSIONS AND CLEARANCES ON SITE PRIOR TO DEMOLITION OR CONSTRUCTION AND REPORT ANY DISCREPANCIES OR OMISSIONS TO DEPARTMENTAL REPRESENTATIVE.
4. CONTRACTOR TO VISIT SITE AND FULLY FAMILIARIZE HIMSELF WITH THE TYPE OF WORK PRIOR TO PROJECT COMMENCEMENT.
5. ALL TRADES TO COORDINATE WORK ON SITE TO AVOID ANY CONFLICTS AND/OR INTERFERENCES.
6. ANY AND ALL REQUIRED SHUTDOWNS SHALL BE COORDINATED WITH DEPARTMENTAL REPRESENTATIVE.
7. ALL EQUIPMENT AND SYSTEM INSTALLATIONS SHALL BE IN ACCORDANCE WITH NATIONAL BUILDING CODE AND NATIONAL PLUMBING CODE AS APPLICABLE.
8. ALL EQUIPMENT AND SYSTEM INSTALLATIONS SHALL BE IN ACCORDANCE WITH MANUFACTURERS RECOMMENDATIONS.
9. DO NOT SCALE DRAWINGS.

## KEYPLAN



0	22 05 2014	ISSUED FOR TENDER		AL
No.	Date	Revision		By: Par:
Date Printed	22 05 2014		Date imprim	

- Verify all dimensions and site conditions and be responsible for same
- Vérifier toutes les dimensions et l'état des lieux et en assumer la responsabilité



project	proj
<b>M-06 HOT WELL PIPING REPLACEMENT</b>	

MONTREAL ROAD CAMPUS

drawing	dess
---------	------

## PARTIAL BASEMENT NEW WORK AND DETAILS

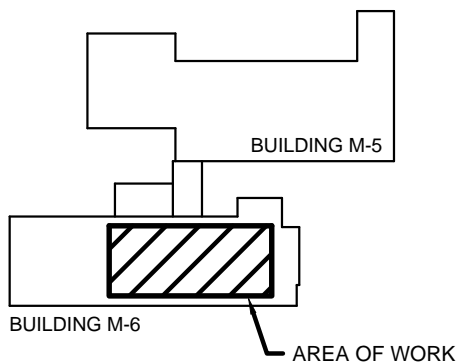
designed	conçu	date	da
<b>ALS</b>		<b>APR 2014</b>	
drawn	dessiné	scale	échelle
<b>RCAS/ALS</b>		<b>AS SHOWN</b>	
checked	vérifié	sheet	feuille
<b>RGC/BV</b>		<b>G04 of/de G14</b>	
approved	approuvé	W.O.no.	D.T.n.
<b>BV</b>		<b>9100029897</b>	

dwg.no.	dessin no.
---------	------------



- GENERAL NOTES:
- DRAWINGS TO BE READ IN CONJUNCTION WITH ALL CONTRACT DRAWINGS AND PROJECT SPECIFICATIONS.
  - DRAWINGS INDICATE GENERAL ROUTING OF SERVICES ONLY. CONTRACTOR TO BE RESPONSIBLE TO PROVIDE ANY ADDITIONAL LABOUR AND MATERIALS REQUIRED TO OFFSET AROUND EXISTING BUILDING FEATURES AND SERVICES TO AVOID INTERFERENCES.
  - CONTRACTOR TO VERIFY ALL DIMENSIONS AND CLEARANCES ON SITE PRIOR TO DEMOLITION OR CONSTRUCTION AND REPORT ANY DISCREPANCIES OR OMISSIONS TO DEPARTMENTAL REPRESENTATIVE.
  - CONTRACTOR TO VISIT SITE AND FULLY FAMILIARIZE THEMSELVES WITH THE SCOPE OF WORK PRIOR TO PROJECT COMMENCEMENT.
  - ALL TRADES TO COORDINATE WORK ON SITE TO AVOID ANY CONFLICTS AND/OR INTERFERENCES.
  - ANY AND ALL REQUIRED SHUTDOWNS SHALL BE COORDINATED WITH DEPARTMENTAL REPRESENTATIVE.
  - ALL EQUIPMENT AND SYSTEM INSTALLATIONS SHALL BE IN ACCORDANCE WITH NATIONAL BUILDING CODE AND NATIONAL PLUMBING CODE AS APPLICABLE.
  - ALL EQUIPMENT AND SYSTEM INSTALLATIONS SHALL BE IN ACCORDANCE WITH MANUFACTURERS RECOMMENDATIONS.
  - DO NOT SCALE DRAWINGS.

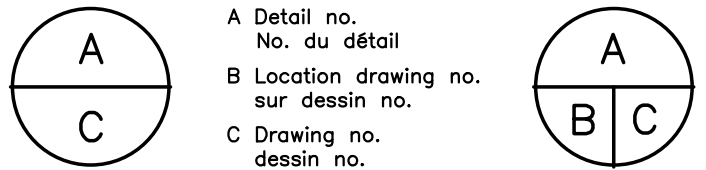
KEYPLAN




0	22 05 2014	ISSUED FOR TENDER	ALS
No.	Date	Revision	By: Par:

Date Printed 22 05 2014 Date imprimée

- Verify all dimensions and site conditions and be responsible for same
- Vérifier toutes les dimensions et l'état des lieux et en assumer la responsabilité



project project  
**M-06 HOT WELL PIPING REPLACEMENT**

MONTREAL ROAD CAMPUS

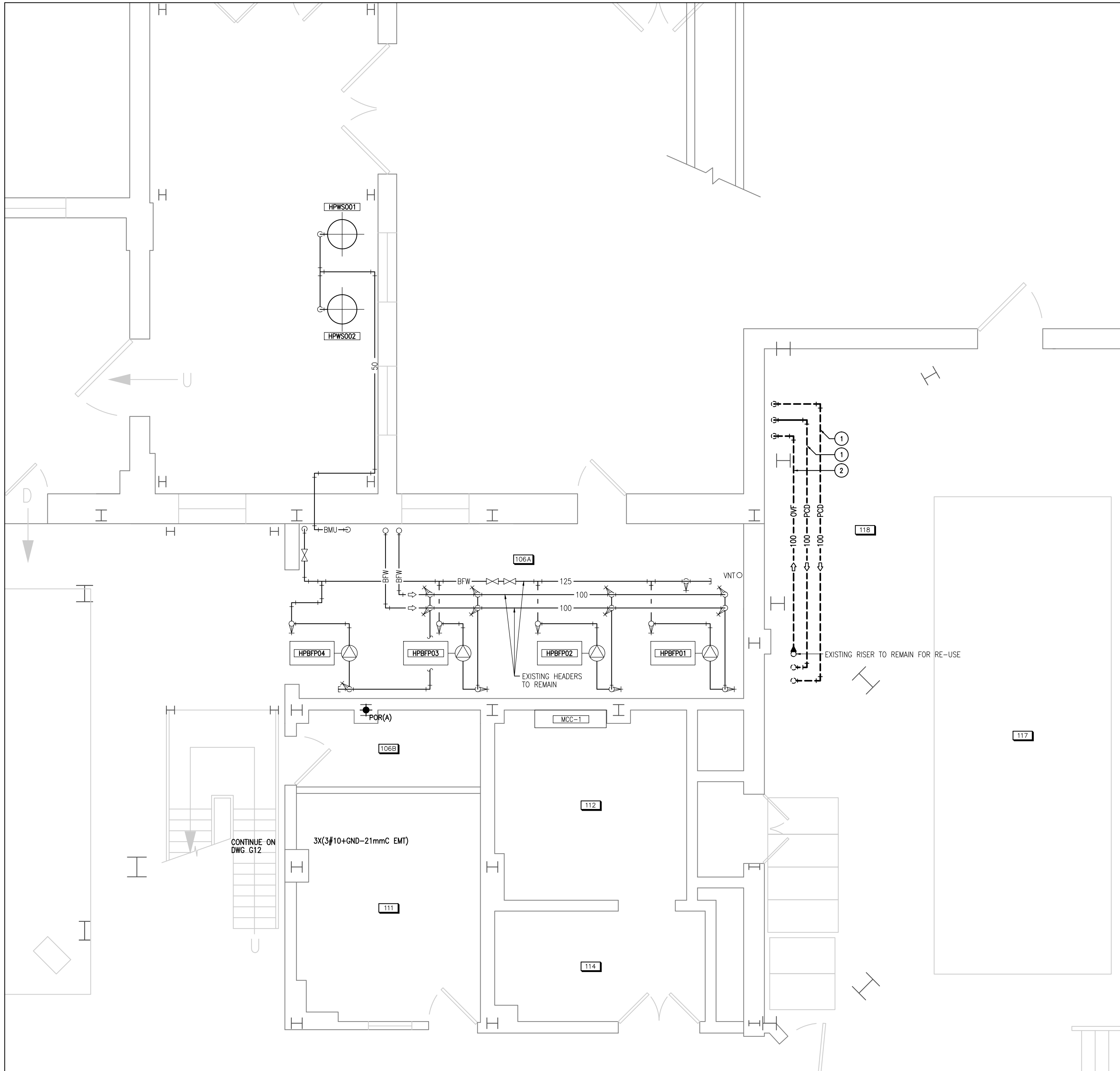
drawing dessin

PARTIAL 1ST FLOOR  
DEMOLITION

designed <b>ALS</b>	conçu	date <b>APR 2014</b>	date
drawn <b>RCAS/ALS</b>	dessiné	scale <b>AS SHOWN</b>	échelle
checked <b>RGC/BV</b>	vérifié	sheet <b>G05</b>	of/de <b>G14</b>
approved <b>DBL</b>	approuvé	W.O.no. <b>9100029897</b>	D.T.no.

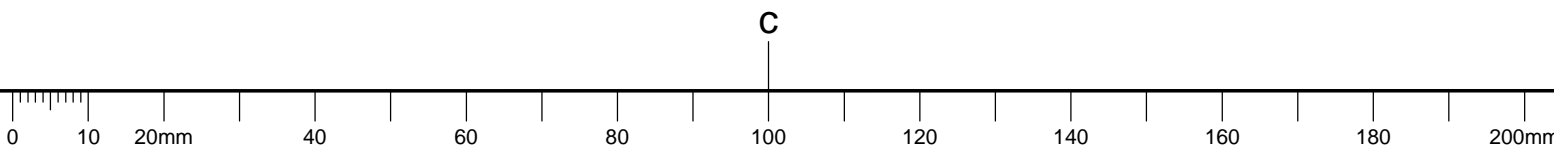
dwg.no.  
**3562-G05**

dessin no.



**1**  
**G05**  
**PARTIAL FIRST FLOOR LAYOUT - DEMOLITION**  
SCALE 1/50

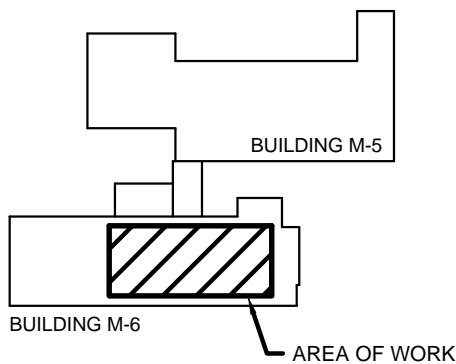
- MECHANICAL DEMOLITION NOTES: (X)
- REMOVE AND DISPOSE OF EXISTING PUMPED CONDENSATE PIPING C/W INSULATION (TYPICAL).
  - REMOVE AND DISPOSE OF EXISTING DEAERATOR OVERFLOW PIPING C/W INSULATION AS INDICATED. RETAIN RISER UP TO DEAERATOR FOR FUTURE RECONNECTION.





- GENERAL NOTES:
- DRAWINGS TO BE READ IN CONJUNCTION WITH ALL CONTRACT DRAWINGS AND PROJECT SPECIFICATIONS.
  - DRAWINGS INDICATE GENERAL ROUTING OF SERVICES ONLY. CONTRACTOR TO BE RESPONSIBLE TO PROVIDE ANY ADDITIONAL LABOUR AND MATERIALS REQUIRED TO OFFSET AROUND EXISTING BUILDING FEATURES AND SERVICES TO AVOID INTERFERENCES.
  - CONTRACTOR TO VERIFY ALL DIMENSIONS AND CLEARANCES ON SITE PRIOR TO DEMOLITION OR CONSTRUCTION AND REPORT ANY DISCREPANCIES OR OMISSIONS TO DEPARTMENTAL REPRESENTATIVE.
  - CONTRACTOR TO VISIT SITE AND FULLY FAMILIARIZE THEMSELVES WITH THE SCOPE OF WORK PRIOR TO PROJECT COMMENCEMENT.
  - ALL TRADES TO COORDINATE WORK ON SITE TO AVOID ANY CONFLICTS AND/OR INTERFERENCES.
  - ANY AND ALL REQUIRED SHUTDOWNS SHALL BE COORDINATED WITH DEPARTMENTAL REPRESENTATIVE.
  - ALL EQUIPMENT AND SYSTEM INSTALLATIONS SHALL BE IN ACCORDANCE WITH NATIONAL BUILDING CODE AND NATIONAL PLUMBING CODE AS APPLICABLE.
  - ALL EQUIPMENT AND SYSTEM INSTALLATIONS SHALL BE IN ACCORDANCE WITH MANUFACTURERS RECOMMENDATIONS.
  - DO NOT SCALE DRAWINGS.

KEYPLAN




0	22 05 2014	ISSUED FOR TENDER	ALS
No.	Date	Revision	By: Par:

Date Printed: 22 05 2014 Date imprimée:

- Verify all dimensions and site conditions and be responsible for same
- Vérifier toutes les dimensions et l'état des lieux et en assumer la responsabilité

A	A Detail no. No. du détail	A
B	B Location drawing no. sur dessin no.	B
C	C Drawing no. dessin no.	C

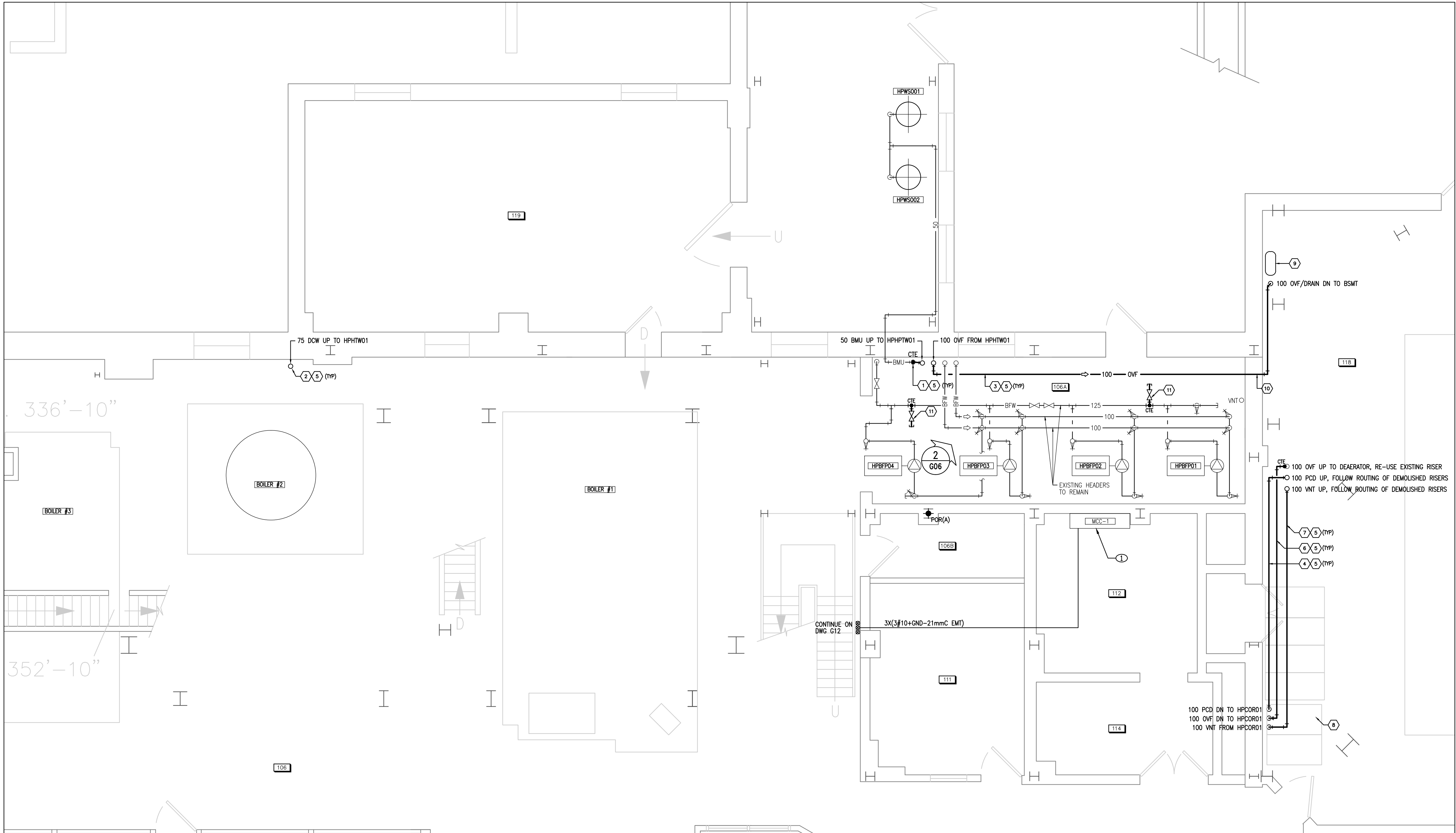
project  
**M-06 HOT WELL PIPING REPLACEMENT**

MONTREAL ROAD CAMPUS

drawing  
dessin

PARTIAL 1ST FLOOR  
NEW WORK AND DETAILS

designed <b>ALS/CYC</b>	conçu <b>ALS/CYC</b>	date <b>APR 2014</b>	date
drawn <b>RCAS/ALS/CYC</b>	dessiné <b>RCAS/ALS/CYC</b>	scale <b>AS SHOWN</b>	échelle
checked <b>RGC/BV</b>	vérifié <b>RGC/BV</b>	sheet <b>G06</b>	of/de <b>G14</b>
approved <b>BV</b>	approuvé <b>BV</b>	W.O.no. <b>9100029897</b>	D.T.no.
dwg.no. <b>3562-G06</b>			dessin no.



**1**  
**G06**  
**PARTIAL FIRST FLOOR LAYOUT - NEW WORK**  
SCALE 1/50

MECHANICAL NEW WORK NOTES: (V)

- PROVIDE NEW 50mm BOILER MAKE-UP PIPING CONNECTION C/W REQUIRED ISOLATION VALVES, FITTINGS, OFFSETS, ACCESSORIES, INSULATION AND SUPPORTS. CONNECT TO EXISTING BOILER MAKE-UP PIPING AS INDICATED ON DRAWING. RE-USE EXISTING FLOOR PENETRATION IN FLOOR OF RM 207.
- NEW 75mm DOMESTIC COLD WATER CONNECTION C/W ISOLATION VALVES, FITTINGS, OFFSETS, ACCESSORIES, INSULATION AND SUPPORTS.
- PROVIDE NEW 100mm OVERFLOW/DRAIN PIPING FROM HPHTW01 C/W REQUIRED ISOLATION VALVES, FITTINGS, OFFSETS, ACCESSORIES, INSULATION AND SUPPORTS. RE-USE EXISTING FLOOR PENETRATION IN RM 117 TO ACCESS BASEMENT AND IN RM 207 TO ACCESS FIRST FLOOR.
- PROVIDE NEW 100mm PUMPED CONDENSATE PIPING FROM CONDENSATE RECEIVER HPCOR01 C/W REQUIRED ISOLATION VALVES, FITTINGS, OFFSETS, ACCESSORIES, INSULATION AND SUPPORTS. FOLLOW GENERAL ROUTING OF PREVIOUSLY DEMOLISHED PUMPED CONDENSATE PIPING.
- INSULATE ALL PIPING IN ACCORDANCE WITH SPECIFICATIONS.
- PROVIDE NEW 100mm OVERFLOW PIPING FROM DEAERATOR HPDEA03 TO HPCOR1 C/W REQUIRED ISOLATION VALVES, FITTINGS, OFFSETS, ACCESSORIES, INSULATION AND SUPPORTS. CONNECT TO EXISTING OVERFLOW PIPING IN APPROXIMATE LOCATION INDICATED ON DRAWINGS.
- PROVIDE NEW 100mm VENT PIPING FROM HPCOR01 C/W REQUIRED OFFSETS, FITTINGS, INSULATION AND SUPPORTS. FOLLOW GENERAL ROUTING OF PREVIOUSLY DEMOLISHED PUMPED CONDENSATE PIPING UP TO NEXT FLOOR FOR CONNECTION TO EXISTING VENT.

- SEAL ALL ABANDONED FLOOR PENETRATIONS IN ACCORDANCE WITH THE FOLLOWING:
  - THOROUGHLY CLEAN EXISTING PENETRATION THROUGH CONCRETE SLAB.
  - SECURE PLYWOOD SHEET TO UNDERSIDE OF SLAB USING TAPCON SCREWS.
  - APPLY BONDING AGENT TO INSIDE OF EXISTING PENETRATIONS.
  - FILL PENETRATION WITH HYDRAULIC CONCRETE, LEVEL TO TOP OF EXISTING SLAB.
  - ONCE CONCRETE CURED, REMOVE PLYWOOD FROM UNDERSIDE OF SLAB.
- CORE DRILL THROUGH WALL TO PASS NEW INSULATED OVERFLOW/DRAIN PIPING FROM HPHTW01. X-RAY WALL PRIOR TO CORE DRILLING. REFER TO SPECIFICATIONS FOR ADDITIONAL DETAILS.
- PROVIDE NEW 100mm BRANCH CONNECTIONS ON BOILER FEEDWATER PIPING C/W CL300 ISOLATION VALVES, REQUIRED OFFSETS AND FITTINGS, SUPPORTS, INSULATION AND CAP. EXACT LOCATION OF BRANCH CONNECTIONS TO BE COORDINATED ON SITE WITH DEPARTMENTAL REPRESENTATIVE (TYP 2).

ELECTRICAL NEW WORK NOTES: (X)

- EXISTING MCC TO REMAIN. MODIFY EXISTING STARTERS' OVERLOAD TO SUIT NEW PUMP HPCOR01 AND HPCOR02 RATINGS. HPWP01, HPWP02 AND HPWP03 WILL BE CONTROLLED FROM VFDs BUT STILL FED FROM MCC#1. MODIFY MCC TO BYPASS THE CONTROL CIRCUIT AND MODIFY OVERLOAD TO SUIT NEW LOADS. NEW WIRING AND CONDUITS FROM MCC TO 3RD FLOOR PUMPS TO RUN UP TO HIGH LEVEL AND ALONG BEAM TO REACH NEW VFDs. REFER TO DRAWING G10 AND G12 FOR ADDITIONAL INFORMATION. CONFIRM EXACT CABLE ROUTING ON SITE WITH DEPARTMENTAL REPRESENTATIVE. PROVIDE PROPER SUPPORT ALONG CONDUIT RUNS.

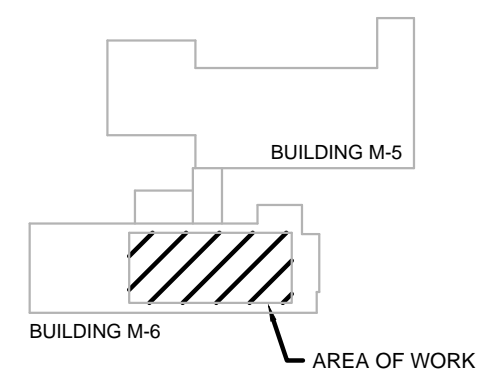


**2**  
**G06**  
**BOILER FEED WATER HEADER PIPING**  
NTS



1. DRAWINGS TO BE READ IN CONJUNCTION WITH ALL CONTRACT DRAWINGS AND PROJECT SPECIFICATIONS.
2. DRAWINGS INDICATE GENERAL ROUTING OF SERVICES ONLY. CONTRACTOR TO BE RESPONSIBLE TO PROVIDE ANY ADDITIONAL LABOUR AND MATERIALS REQUIRED TO TRAVEL AROUND EXISTING STRUCTURAL FEATURES AND SERVICES TO AVOID INTERFERENCES.
3. CONTRACTOR TO VERIFY ALL DIMENSIONS AND CLEARANCES ON SITE PRIOR TO DEMOLITION OR CONSTRUCTION AND REPORT ANY DISCREPANCIES OR MISSENS TO DEPARTMENTAL REPRESENTATIVE.
4. CONTRACTOR TO VISIT SITE AND FULLY FAMILIARIZE THEMSELVES WITH THE SCOPE OF WORK PRIOR TO PROJECT COMMENCEMENT.
5. ALL TRADES TO COORDINATE WORK ON SITE TO AVOID ANY CONFLICTS AND/OR INTERFERENCES.
6. ANY AND ALL REQUIRED SHUTDOWNS SHALL BE COORDINATED WITH DEPARTMENTAL REPRESENTATIVE.
7. ALL EQUIPMENT AND SYSTEM INSTALLATIONS SHALL BE IN ACCORDANCE WITH NATIONAL BUILDING CODE AND NATIONAL PLUMBING CODE AS APPLICABLE.
8. ALL EQUIPMENT AND SYSTEM INSTALLATIONS SHALL BE IN ACCORDANCE WITH MANUFACTURERS RECOMMENDATIONS.
9. DO NOT SCALE DRAWINGS.

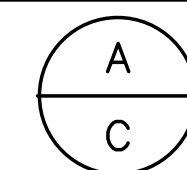
## KEYPLAN




0	22 05 2014	ISSUED FOR TENDER	ALS
No.	Date	Revision	By: Par:

Date Printed	22 05 2014	Date imprimée
--------------	------------	---------------

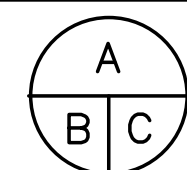
- Verify all dimensions and site conditions and be responsible for same
- Vérifier toutes les dimensions et l'état des lieux et en assumer la responsabilité



A Detail no.  
No. du détail

B Location drawing no.  
sur dessin no.

C Drawing no.  
dessin no.



project	projet
---------	--------

## M-06 HOT WELL PIPING REPLACEMENT

MONTREAL ROAD CAMPUS

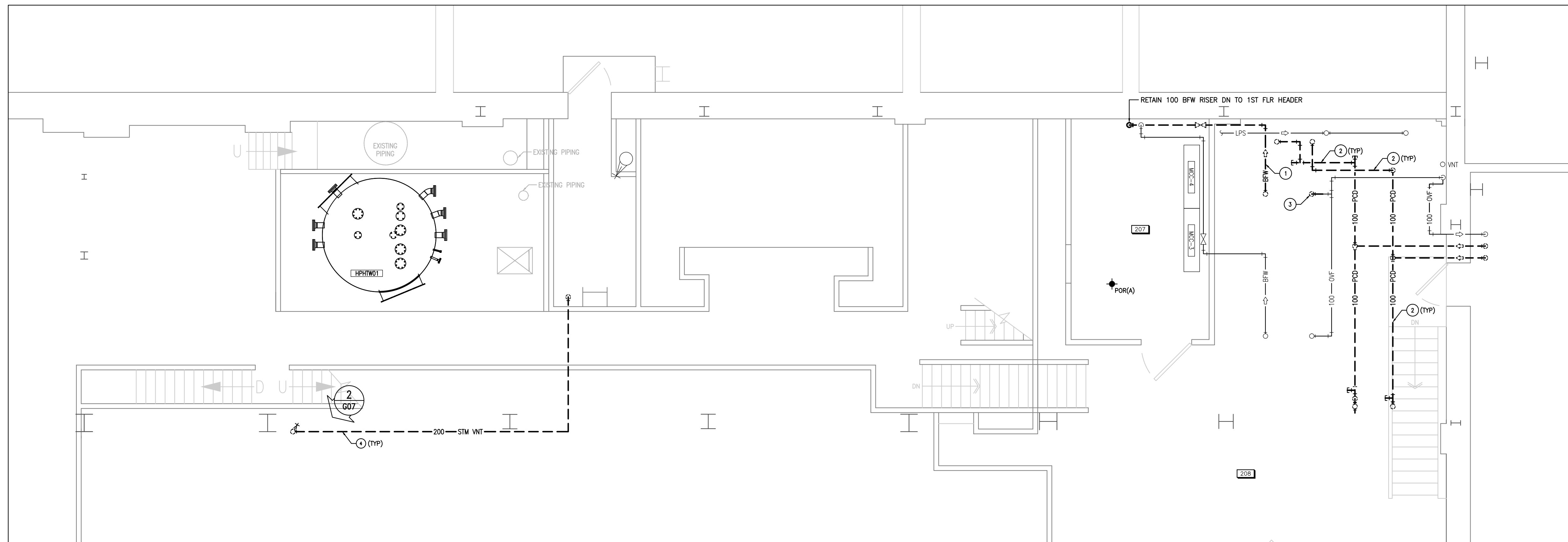
drawing	dessin
---------	--------

PARTIAL 2ND FLOOR  
DEMOLITION

designed	conçu	date	date
<b>ALS/CYC</b>		<b>APR 2014</b>	
drawn	dessiné	scale	échelle
<b>RCAS/ALS/CYC</b>		<b>AS SHOWN</b>	
checked	vérifié	sheet	feuille
<b>RGC/BV</b>		<b>G07 of/de</b>	<b>G14</b>
approved	approuvé	W.O.no.	D.T.no.
<b>BV</b>		<b>9100029897</b>	

dwg.no.	dessin no.
---------	------------

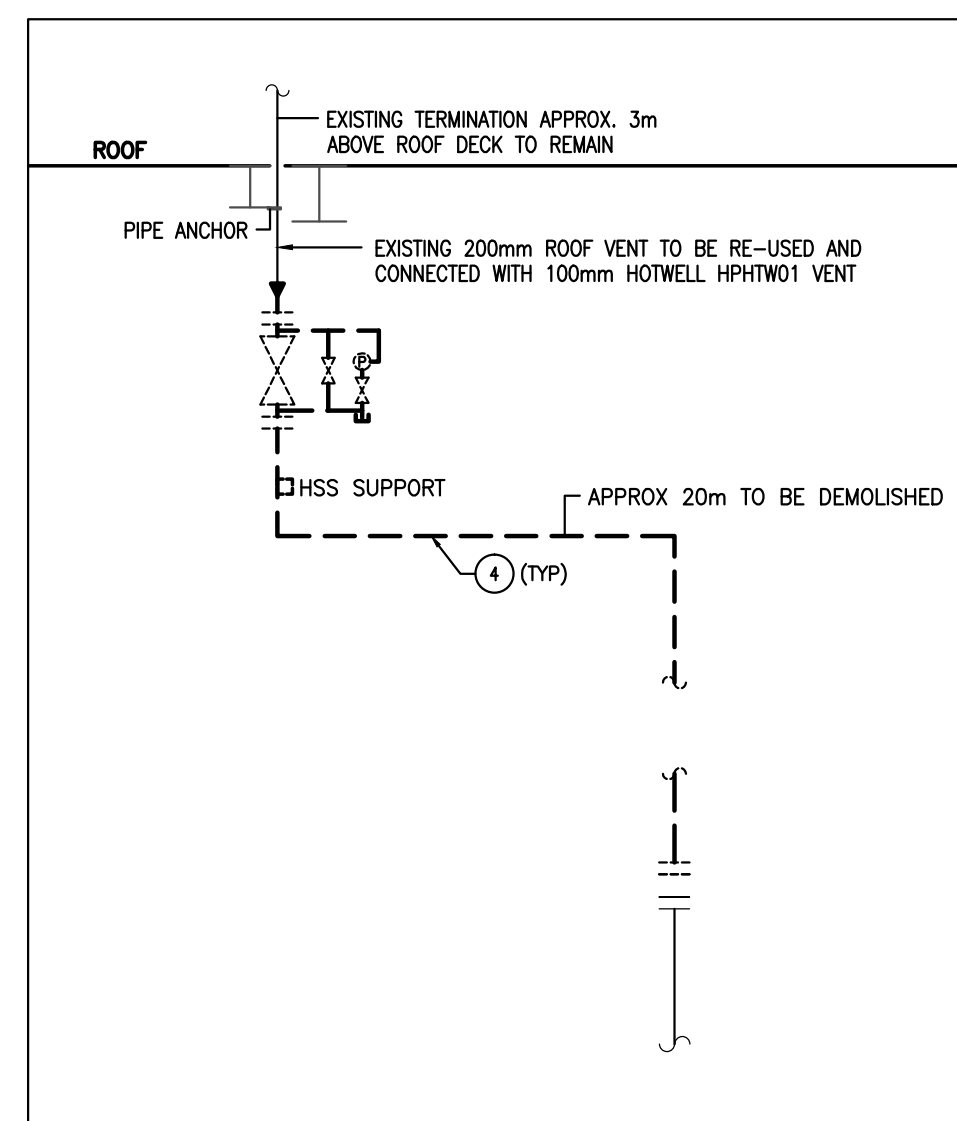
3562-G07



1 PARTIAL 2ND FLOOR LAYOUT - DEMOLITION  
G07 SCALE 1/50



2 ABANDONED STEAM RELIEF PIPING  
G07 TO BE DEMOLISHED  
NTS



3 ABANDONED STEAM RELIEF PIPING SCHEMATIC  
G07 TO BE DEMOLISHED  
NTS

MECHANICAL DEMOLITION NOTES: (X)

1. REMOVE AND DISPOSE OF EXISTING BOILER FEEDWATER PIPING FROM DEAREATOR HPDEA02 C/W INSULATION. CUT BACK TO RISER LOCATED IN RM 207 AND RETAIN RISER FOR FUTURE RECONNECTION.
2. REMOVE AND DISPOSE OF EXISTING PUMPED CONDENSATE PIPING C/W INSULATION.
3. CUT BACK AND CAP OVERFLOW PIPING FROM DEAREATOR HPDEA02.
4. REMOVE AND DISPOSE OF EXISTING 200mm ABANDONED STEAM RELIEF PIPING (APPROX 20m) C/W VALVE ASSEMBLY, INSULATION, PIPING SUPPORTS AND ANCHORS TO THE POINT BEFORE THE OVER VALVE TO NRC DEPARTMENTAL REPRESENTATIVE. RETAIN PIPING AND ROOF PENETRATION FOR FUTURE CONNECTION WITH HOTWELL HPHTW01 VENT PIPING.







1. DRAWINGS TO BE READ IN CONJUNCTION WITH ALL CONTRACT DRAWINGS AND PROJECT SPECIFICATIONS.
2. DRAWINGS INDICATE GENERAL ROUTING OF SERVICES ONLY. CONTRACTOR TO BE RESPONSIBLE TO PROVIDE ANY ADDITIONAL LABOUR AND MATERIALS REQUIRED TO AVOID COLLISION WITH EXISTING UTILITIES AND SERVICES TO AVOID INTERFERENCES.
3. CONTRACTOR TO VERIFY ALL DIMENSIONS AND CLEARANCES ON SITE PRIOR TO DEMOLITION OR CONSTRUCTION AND REPORT ANY DISCREPANCIES OR OMISSIONS TO DEPARTMENTAL REPRESENTATIVE.
4. CONTRACTOR TO VISIT SITE AND FULLY FAMILIARIZE HIMSELF WITH THE NATURE OF WORK PRIOR TO PROJECT COMMENCEMENT.
5. ALL TRADES TO COORDINATE WORK ON SITE TO AVOID ANY CONFLICTS AND/OR INTERFERENCES.
6. ANY AND ALL REQUIRED SHUTDOWNS SHALL BE COORDINATED WITH DEPARTMENTAL REPRESENTATIVE.
7. ALL EQUIPMENT AND SYSTEM INSTALLATIONS SHALL BE IN ACCORDANCE WITH NATIONAL BUILDING CODE AND NATIONAL PLUMBING CODE AS APPLICABLE.
8. ALL EQUIPMENT AND SYSTEM INSTALLATIONS SHALL BE IN ACCORDANCE WITH MANUFACTURERS RECOMMENDATIONS.
9. DO NOT SCALE DRAWINGS.

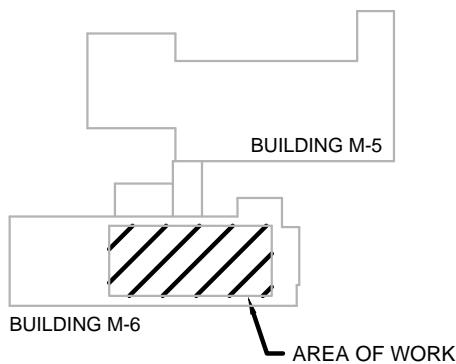
dwg.no.	dessin no.
3562-G09	





- GENERAL NOTES:
- DRAWINGS TO BE READ IN CONJUNCTION WITH ALL CONTRACT DRAWINGS AND PROJECT SPECIFICATIONS.
  - DRAWINGS INDICATE GENERAL ROUTING OF SERVICES ONLY. CONTRACTOR TO BE RESPONSIBLE TO PROVIDE ANY ADDITIONAL LABOUR AND MATERIALS REQUIRED TO OFFSET AROUND EXISTING BUILDING FEATURES AND SERVICES TO AVOID INTERFERENCES.
  - CONTRACTOR TO VERIFY ALL DIMENSIONS AND CLEARANCES ON SITE PRIOR TO DEMOLITION OR CONSTRUCTION AND REPORT ANY DISCREPANCIES OR OMISSIONS TO DEPARTMENTAL REPRESENTATIVE.
  - CONTRACTOR TO VISIT SITE AND FULLY FAMILIARIZE THEMSELVES WITH THE SCOPE OF WORK PRIOR TO PROJECT COMMENCEMENT.
  - ALL TRADES TO COORDINATE WORK ON SITE TO AVOID ANY CONFLICTS AND/OR INTERFERENCES.
  - ANY AND ALL REQUIRED SHUTDOWNS SHALL BE COORDINATED WITH DEPARTMENTAL REPRESENTATIVE.
  - ALL EQUIPMENT AND SYSTEM INSTALLATIONS SHALL BE IN ACCORDANCE WITH NATIONAL BUILDING CODE AND NATIONAL PLUMBING CODE AS APPLICABLE.
  - ALL EQUIPMENT AND SYSTEM INSTALLATIONS SHALL BE IN ACCORDANCE WITH MANUFACTURERS RECOMMENDATIONS.
  - DO NOT SCALE DRAWINGS.

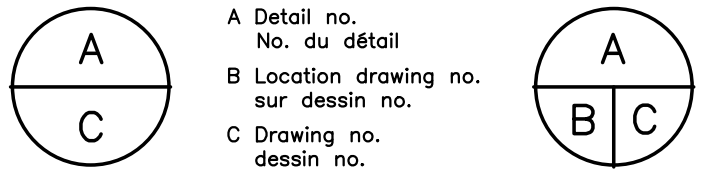
KEYPLAN



0	22 05 2014	ISSUED FOR TENDER	ALS
No.	Date	Revision	By: For:

Date Printed 22 05 2014 Date imprimée

- Verify all dimensions and site conditions and be responsible for same
- Vérifier toutes les dimensions et l'état des lieux et en assumer la responsabilité



project projet

M-06 HOT WELL PIPING REPLACEMENT

MONTREAL ROAD CAMPUS

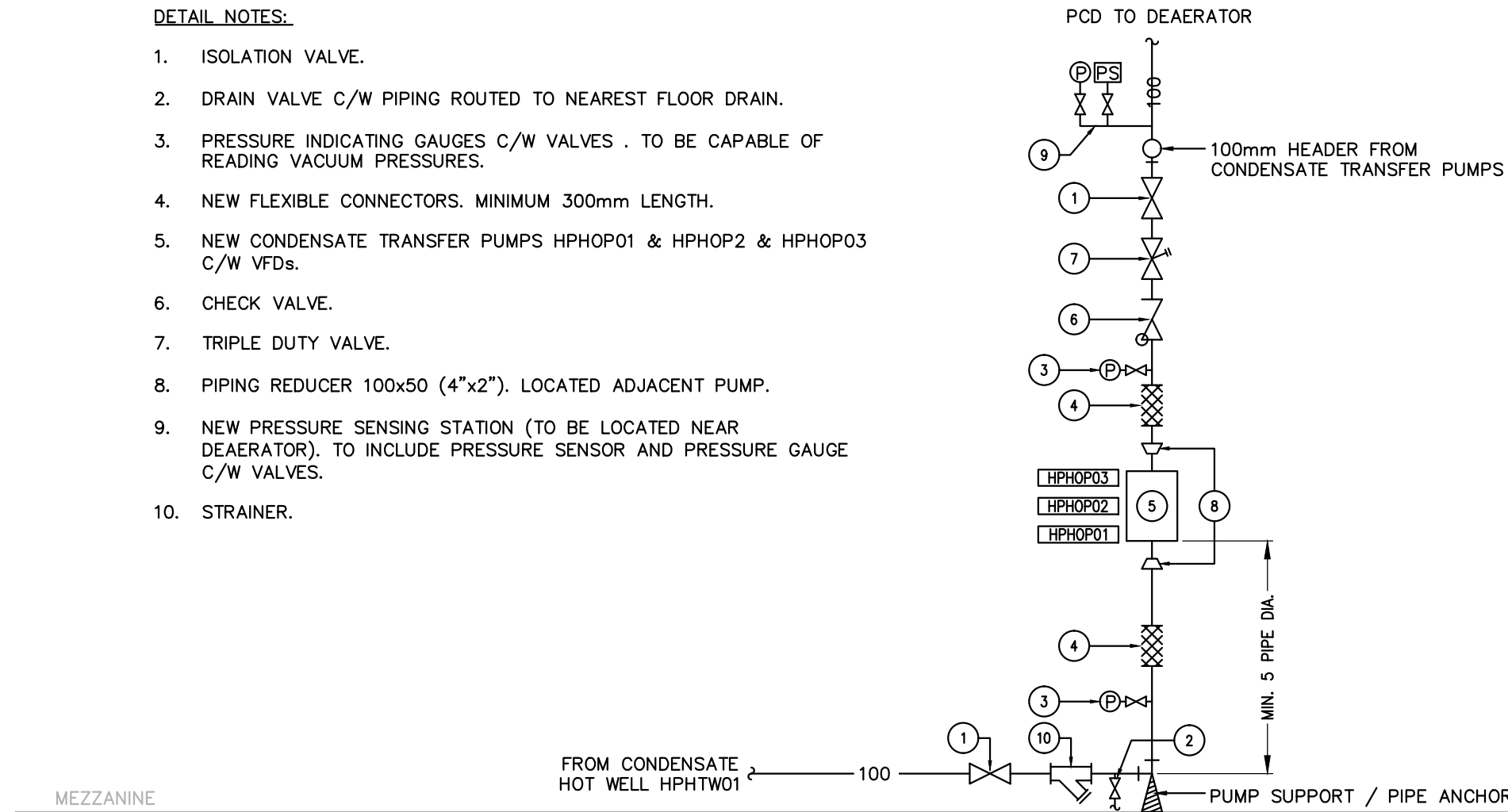
drawing dessin

PARTIAL 2ND FLOOR  
NEW WORK AND DETAILS

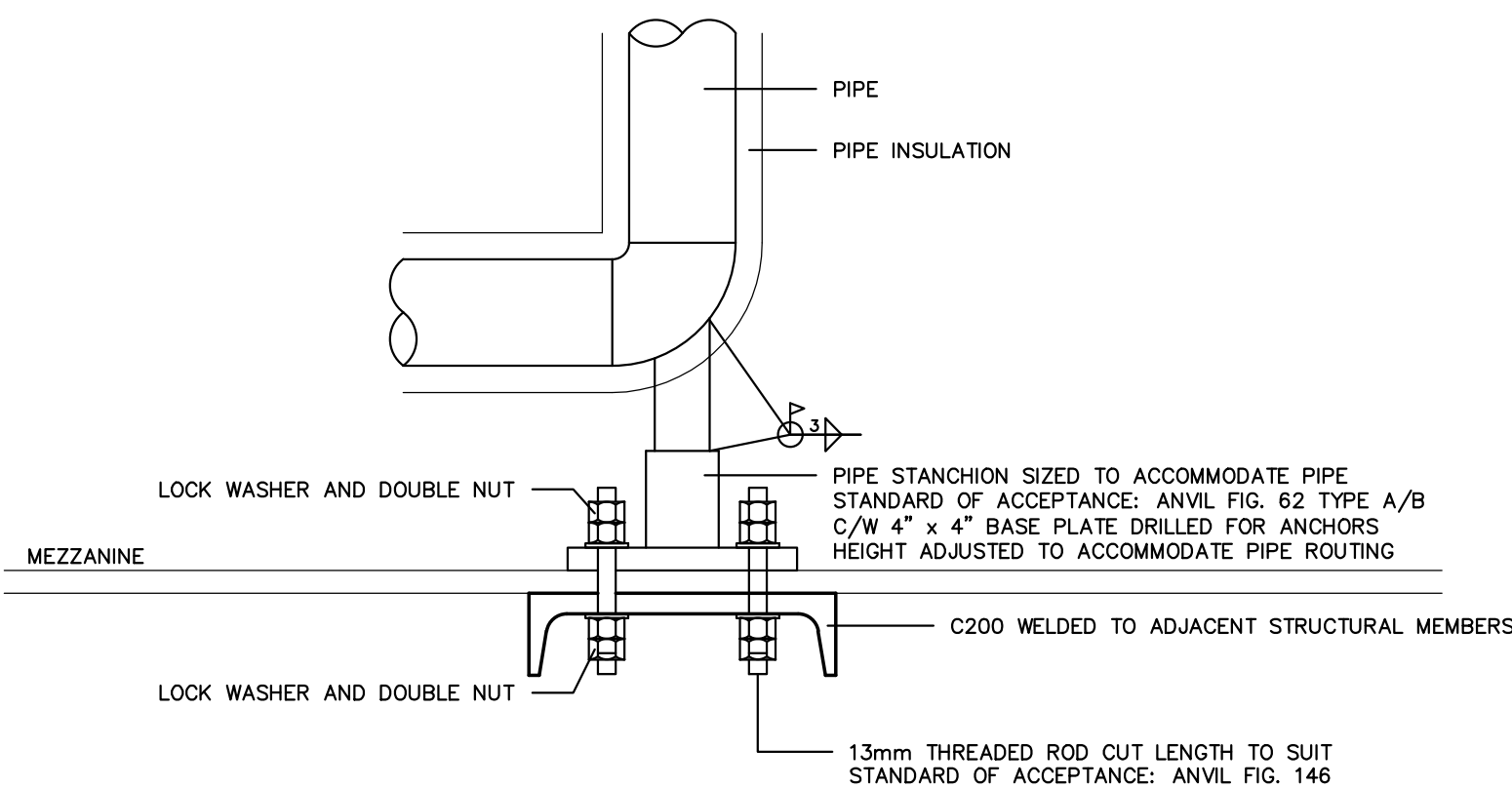
designed ALS/CYC	conçu	date APR 2014	date
drawn RCAS/ALS/CYC	dessiné	scale AS SHOWN	échelle
checked RGC/BV	vérifié	sheet G10 of/de G14	feuille
approved BV	approuvé	W.O.no. 9100029897	D.T.no.
dwg.no. 3562-G10			dessin no.

DETAIL NOTES:

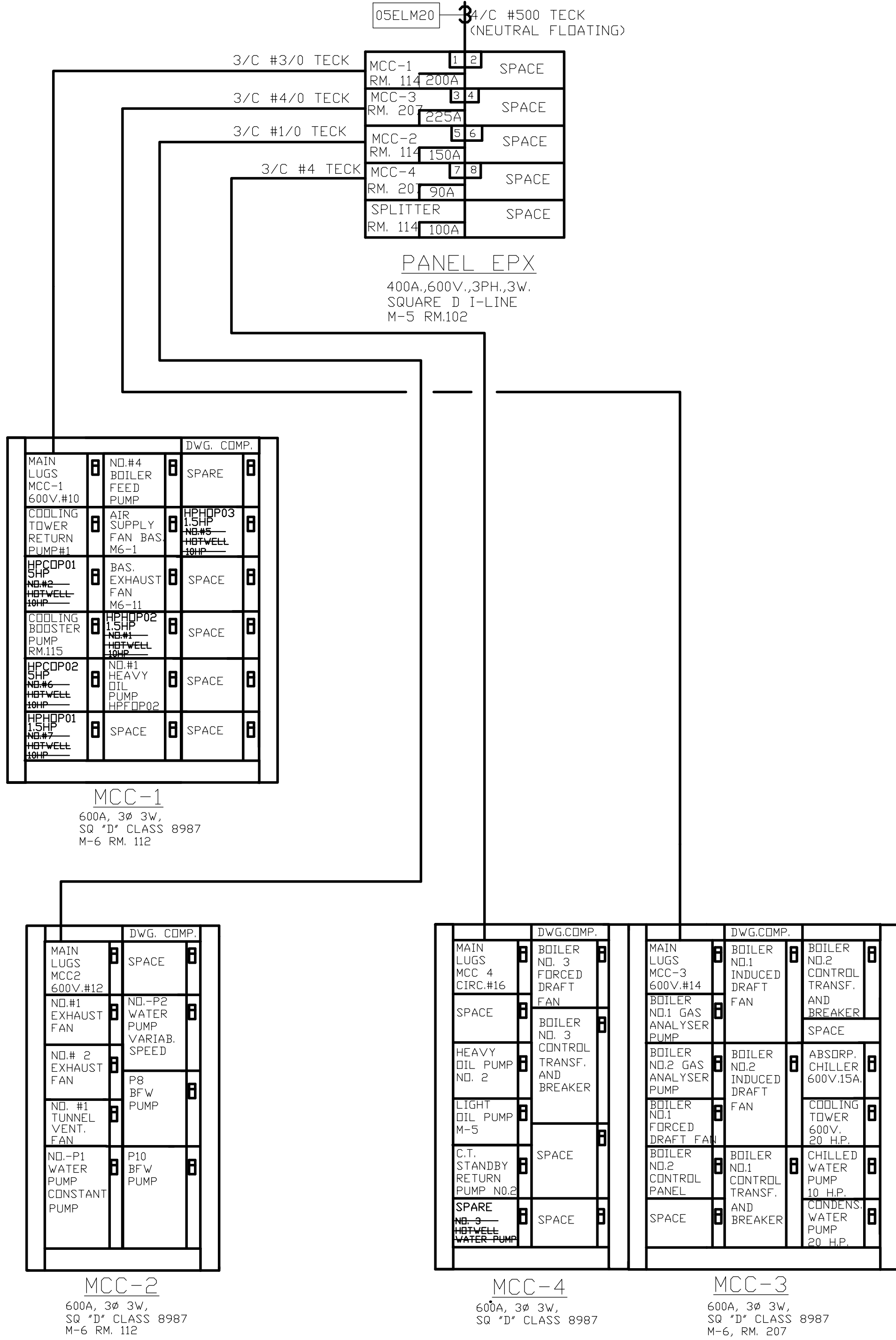
- ISOLATION VALVE.
- DRAIN VALVE C/W PIPING ROUTED TO NEAREST FLOOR DRAIN.
- PRESSURE INDICATING GAUGES C/W VALVES . TO BE CAPABLE OF READING VACUUM PRESSURES.
- NEW FLEXIBLE CONNECTORS. MINIMUM 300mm LENGTH.
- NEW CONDENSATE TRANSFER PUMPS HPHOP01 & HPHOP2 & HPHOP03 C/W VFDs.
- CHECK VALVE.
- TRIPLE DUTY VALVE.
- PIPING REDUCER 100x50 (4"x2"). LOCATED ADJACENT PUMP.
- NEW PRESSURE SENSING STATION (TO BE LOCATED NEAR DEAEATOR). TO INCLUDE PRESSURE SENSOR AND PRESSURE GAUGE C/W VALVES.
- STRAINER.



1 TYPICAL HOT WELL CONDENSATE PUMP CONNECTION DETAIL  
NTS



2 TYPICAL CONDENSATE PUMP SUPPORT / PIPE ANCHOR DETAIL  
NTS



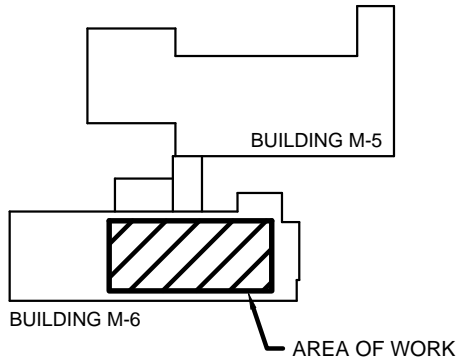
3 PARTIAL SINGLE LINE DIAGRAM  
NTS





- GENERAL NOTES:
- DRAWINGS TO BE READ IN CONJUNCTION WITH ALL CONTRACT DRAWINGS AND PROJECT SPECIFICATIONS.
  - DRAWINGS INDICATE GENERAL ROUTING OF SERVICES ONLY. CONTRACTOR TO BE RESPONSIBLE TO PROVIDE ANY ADDITIONAL LABOUR AND MATERIALS REQUIRED TO OFFSET AROUND EXISTING BUILDING FEATURES AND SERVICES TO AVOID INTERFERENCES.
  - CONTRACTOR TO VERIFY ALL DIMENSIONS AND CLEARANCES ON SITE PRIOR TO DEMOLITION OR CONSTRUCTION AND REPORT ANY DISCREPANCIES OR OMISSIONS TO DEPARTMENTAL REPRESENTATIVE.
  - CONTRACTOR TO VISIT SITE AND FULLY FAMILIARIZE THEMSELVES WITH THE SCOPE OF WORK PRIOR TO PROJECT COMMENCEMENT.
  - ALL TRADES TO COORDINATE WORK ON SITE TO AVOID ANY CONFLICTS AND/OR INTERFERENCES.
  - ANY AND ALL REQUIRED SHUTDOWNS SHALL BE COORDINATED WITH DEPARTMENTAL REPRESENTATIVE.
  - ALL EQUIPMENT AND SYSTEM INSTALLATIONS SHALL BE IN ACCORDANCE WITH NATIONAL BUILDING CODE AND NATIONAL PLUMBING CODE AS APPLICABLE.
  - ALL EQUIPMENT AND SYSTEM INSTALLATIONS SHALL BE IN ACCORDANCE WITH MANUFACTURERS RECOMMENDATIONS.
  - DO NOT SCALE DRAWINGS.

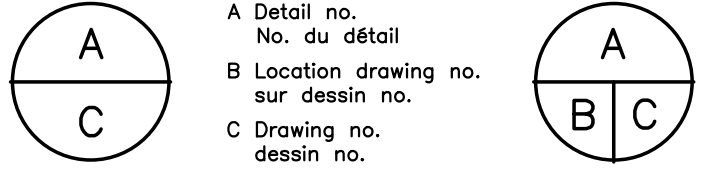
KEYPLAN




0	22 05 2014	ISSUED FOR TENDER	ALS
No.	Date	Revision	By: Par:

Date Printed 22 05 2014 Date imprimée

- Verify all dimensions and site conditions and be responsible for same
- Vérifier toutes les dimensions et l'état des lieux et en assumer la responsabilité



project  
**M-06 HOT WELL PIPING REPLACEMENT**  
projet

**MONTREAL ROAD CAMPUS**

drawing  
**PARTIAL 3RD FLOOR DEMOLITION**  
dessin

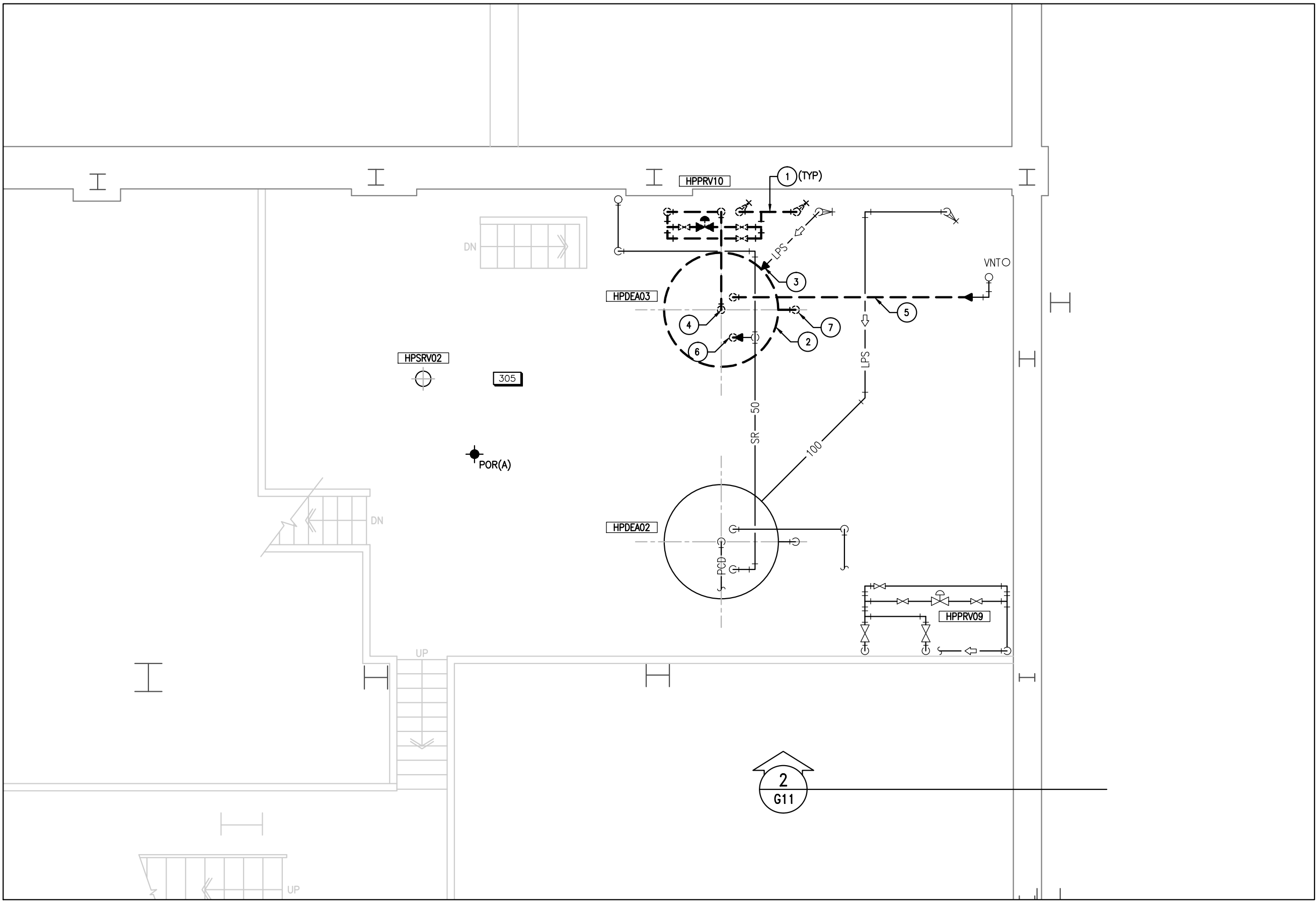
designed  
**ALS/CYC**  
conçu  
**APR 2014**  
date

drawn  
**RCAS/ALS/CYC**  
dessiné  
**AS SHOWN**  
scale  
échelle

checked  
**RGC/BV**  
vérifié  
**G11 of/de G14**  
sheet  
feuille

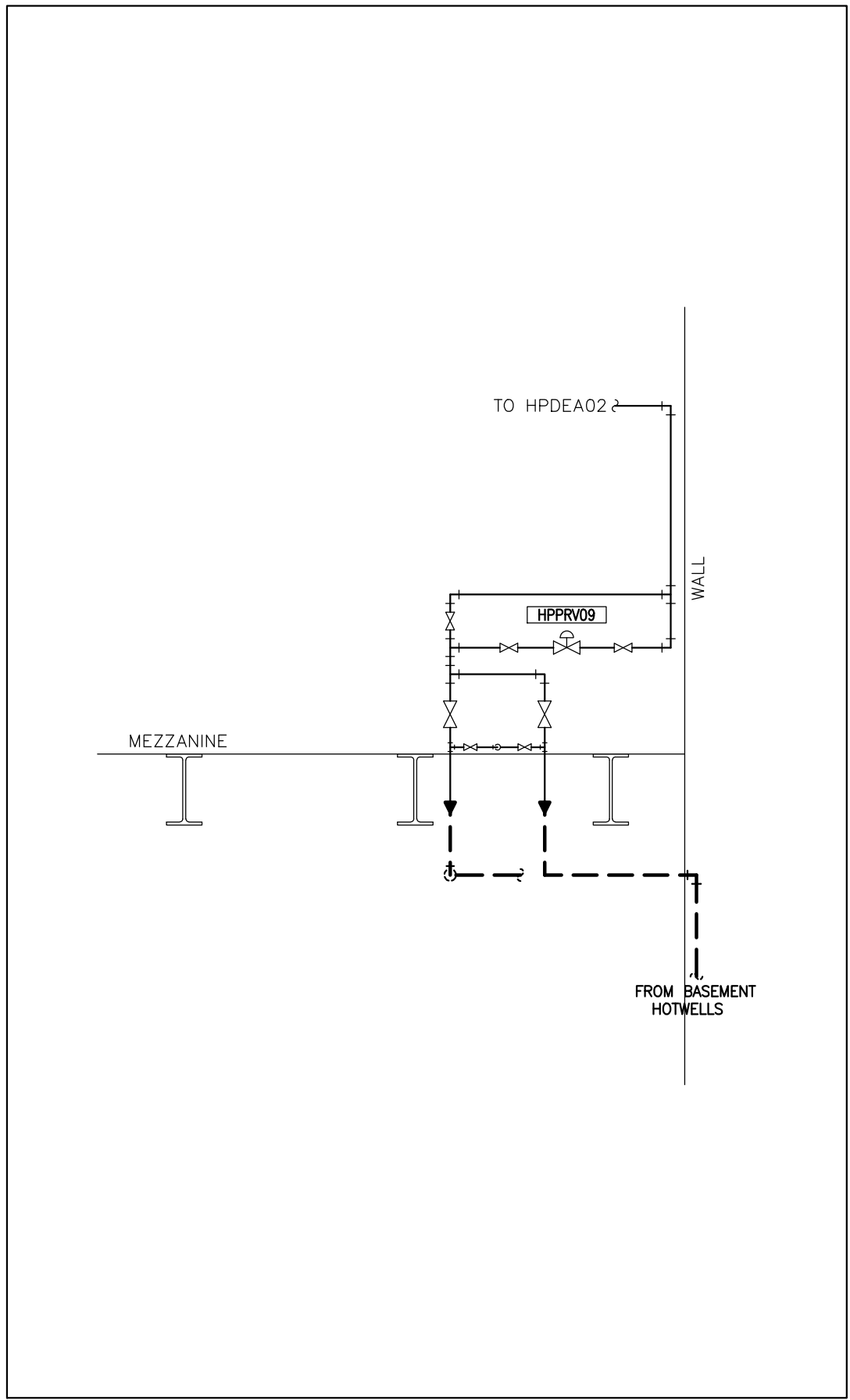
approved  
**BV**  
approuvé  
**9100029897**  
W.O.no.  
D.T.no.

dwg.no.  
**3562-G11**  
dessin no.



**1 PARTIAL 3RD FLOOR LAYOUT - DEMOLITION**  
SCALE 1/50

- MECHANICAL DEMOLITION NOTES: (X)
- REMOVE AND DISPOSE OF EXISTING PUMPED CONDENSATE PIPING C/W INSULATION. HAND OVER VALVE HPDRV10 TO NRC DEPARTMENTAL REPRESENTATIVE.
  - REMOVE AND DISPOSE OF DEAERATOR HPDEA03.
  - CUT BACK AND CAP EXISTING LOW PRESSURE STEAM CONNECTION TO DEAERATOR HPDEA03.
  - REMOVE AND DISPOSE OF PORTIONS OF BOILER FEEDWATER PIPING FROM DEAERATOR HPDEA03 TO BOILER FEEDWATER HEADER ON 1ST FLOOR C/W INSULATION AS INDICATED ON DRAWINGS (REFER TO 2ND FLOOR LAYOUT).
  - CUT BACK AND CAP VENT PIPING FROM DEAERATOR HPDEA03.
  - CUT BACK AND CAP SAFETY RELIEF PIPING FROM DEAERATOR HPDEA03.
  - CUT BACK AND CAP OVERFLOW PIPING FROM DEAERATOR HPDEA03 C/W INSULATION AS INDICATED ON DRAWINGS (REFER TO 2ND FLOOR LAYOUT).



**2 ELEVATION OF HPDRV09 - DEMOLITION**  
NTS

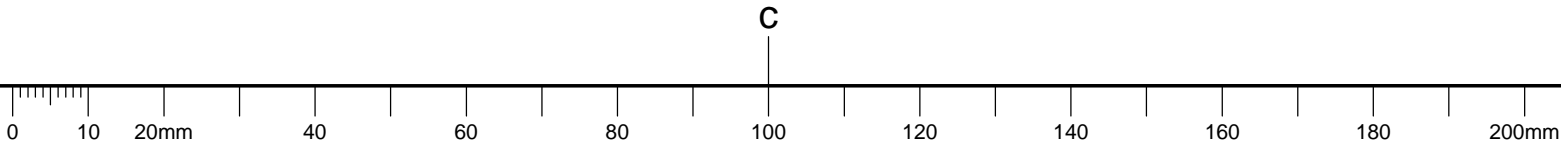
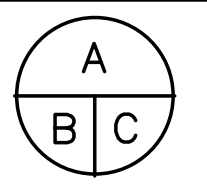




Diagram showing the location of the area of work relative to Building M-5 and Building M-6. Building M-5 is a large structure above Building M-6. A rectangular area within Building M-6 is shaded with diagonal lines and labeled 'AREA OF WORK' with a leader line.

0	22 05 2014	ISSUED FOR TENDER	ALS
No.	Date	Revision	By: Par:

- Verify all dimensions and site conditions and be responsible for same
- Vérifier toutes les dimensions et l'état des lieux et en assumer la responsabilité

PARTIAL 3RD FLOOR  
NEW WORK AND DETAILS

3562-G12

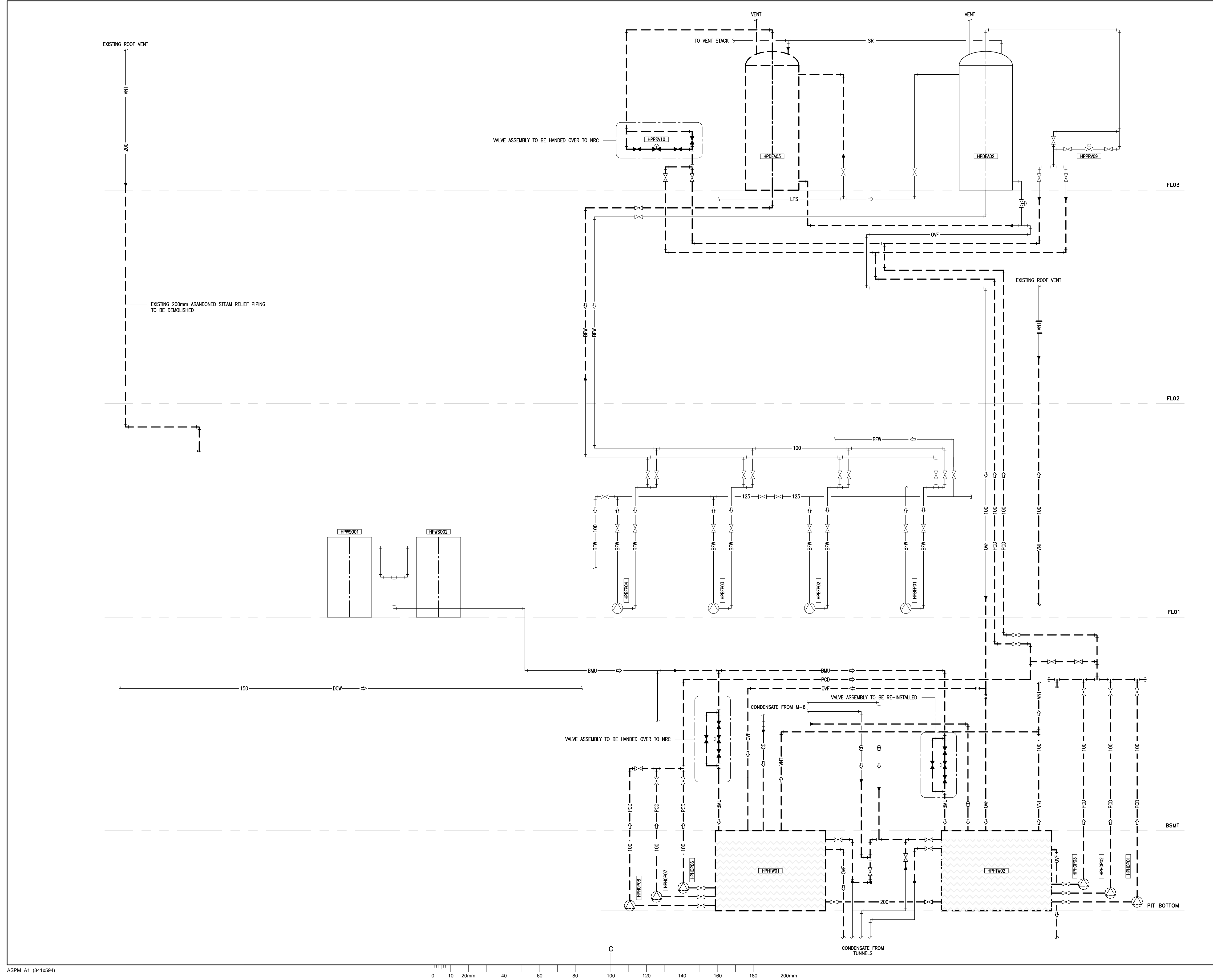


1. CAP EXISTING VENT PIPING.
2. CAP EXISTING SAFETY RELIEF PIPING.
3. CAP EXISTING 200mm LOW PRESSURE STEAM PIPING AT FLANGE CONNECTION. PROVIDE NEW PIPING SUPPORT.
4. PROVIDE NEW 100mm PUMPED CONDENSATE PIPING FROM HOT WELL HPHWT01 AND CONNECT TO EXISTING DEAEATOR HPDEA03 SUPPLY PIPING C/W REQUIRED ISOLATION VALVES, FITTINGS, OFFSETS, ACCESSORIES, INSULATION AND SUPPORTS.
5. PROVIDE NEW 100mm PUMPED CONDENSATE PIPING FROM CONDENSATE RECEIVER HPCOR01 TO HOT WELL HPHWT01 AND DEAREATOR HPDEA03 C/W REQUIRED ISOLATION VALVES, FITTINGS, OFFSETS, ACCESSORIES, INSULATION AND SUPPORTS.
6. INSULATE ALL PIPING IN ACCORDANCE WITH SPECIFICATIONS.

1. NEW WIRING AND CONDUITS FEEDING THREE PUMPS TO RUN ALONG BEAM. PROVIDE PROPER SUPPORT ALONG CONDUIT RUNS. PROVIDE ALL FINAL CONNECTIONS.
2. PROVIDE THREE (3) VFD's C/W BYPASS, FUSIBLE DISCONNECT SWITCH, INLINE REACTORS, PROFIBUS ADAPTER MODULE. INSTALL THE VFD AND MAKE ALL FINAL CONNECTIONS INCLUDING CONTROL CONNECTIONS. PROVIDE UNISTRUT WITH FLOOR FOOTING AND 1000mmx800mm PLYSWOOD TO SUPPORT VFD INSTALLATION. VFD's TO BE MOUNTED SO THE SCREENS ARE AT 1500mm AFF. PROVIDE PROGRAMMING AND COMMISSIONING UPON JOB COMPLETION. VFD'S TO BE CONTROLLED BY EXISTING ABB CONTROL SYSTEM.
3. MODIFY EXISTING CONTROL SYSTEM TO ADAPT NEW PUMPS. WHICH INCLUDES BUT NOT LIMITED TO
  - 3.1. ABB AI810 WITH BASE (8 CH. ANALOG INPUT MODULE)
  - 3.2. ABB AO810 WITH BASE (8 CH. ANALOG OUTPUT MODULE)
  - 3.3. ABB DI810 WITH BASE (16 CH. 24Vdc DIGITAL INPUT MODULE)
  - 3.4. ABB DO810 WITH BASE (16 CH. 24Vdc DIGITAL OUTPUT MODULE)
  - 3.5. MODULE BUS EXTENSION CABLE.
4. REFER TO DRAWING G08 FOR CONNECTIONS FROM VFD's TO PUMPS.

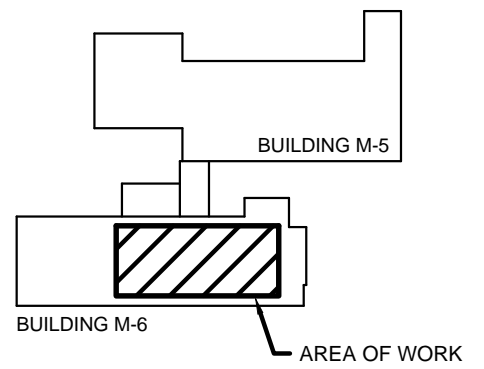






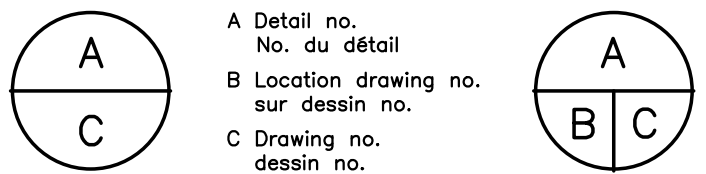
- GENERAL NOTES:**
- DRAWINGS TO BE READ IN CONJUNCTION WITH ALL CONTRACT DRAWINGS AND PROJECT SPECIFICATIONS.
  - DRAWINGS INDICATE GENERAL ROUTING OF SERVICES ONLY. CONTRACTOR TO BE RESPONSIBLE TO PROVIDE ANY ADDITIONAL LABOUR AND MATERIALS REQUIRED TO OFFSET AROUND EXISTING BUILDING FEATURES AND SERVICES TO AVOID INTERFERENCES.
  - CONTRACTOR TO VERIFY ALL DIMENSIONS AND CLEARANCES ON SITE PRIOR TO DEMOLITION OR CONSTRUCTION AND REPORT ANY DISCREPANCIES OR OMISSIONS TO DEPARTMENTAL REPRESENTATIVE.
  - CONTRACTOR TO VISIT SITE AND FULLY FAMILIARIZE THEMSELVES WITH THE SCOPE OF WORK PRIOR TO PROJECT COMMENCEMENT.
  - ALL TRADES TO COORDINATE WORK ON SITE TO AVOID ANY CONFLICTS AND/OR INTERFERENCES.
  - ANY AND ALL REQUIRED SHUTDOWNS SHALL BE COORDINATED WITH DEPARTMENTAL REPRESENTATIVE.
  - ALL EQUIPMENT AND SYSTEM INSTALLATIONS SHALL BE IN ACCORDANCE WITH NATIONAL BUILDING CODE AND NATIONAL PLUMBING CODE AS APPLICABLE.
  - ALL EQUIPMENT AND SYSTEM INSTALLATIONS SHALL BE IN ACCORDANCE WITH MANUFACTURERS RECOMMENDATIONS.
  - DO NOT SCALE DRAWINGS.

**KEYPLAN**



0	22 05 2014	ISSUED FOR TENDER	ALS
No.	Date	Revision	By: Par:
Date Printed 22 05 2014		Date imprimée	

- Verify all dimensions and site conditions and be responsible for same
- Vérifier toutes les dimensions et l'état des lieux et en assumer la responsabilité



project **M-06 HOT WELL PIPING REPLACEMENT** projet

drawing **MONTREAL ROAD CAMPUS** dessin

designed **ALS** conçu **APR 2014** date

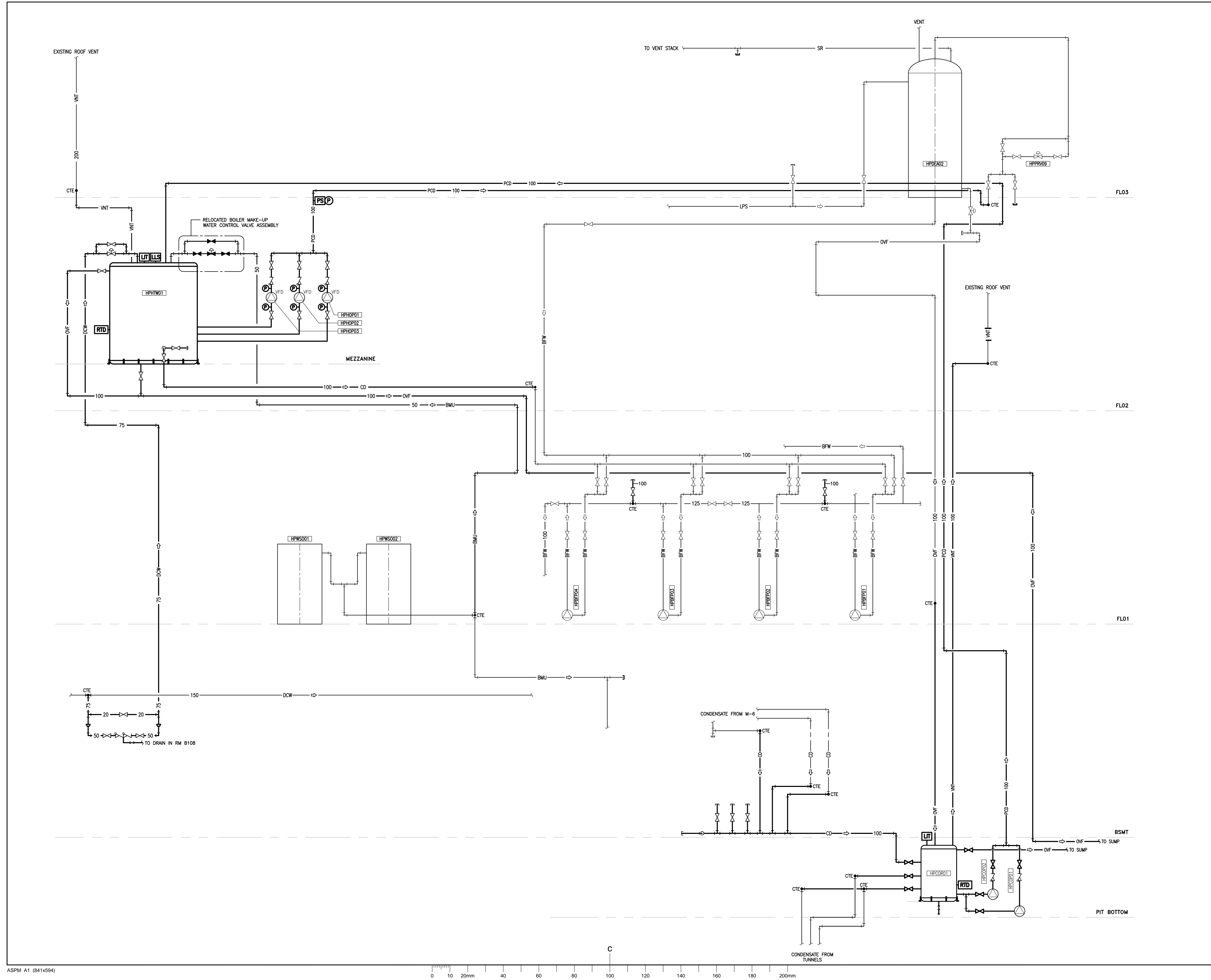
drawn **RCAS/ALS** dessiné **AS SHOWN** scale **AS SHOWN** échelle

checked **RGC/BV** vérifié **G13** sheet **G13** of/de **G14** feuille

approved **BV** approuvé **9100029897** W.O.no. D.T.no.

dwg.no. **3562-G13** dessin no.





ASPM A1 (841x594)



National Research  
Council Canada  
Administrative Services  
and Property Management  
Branch

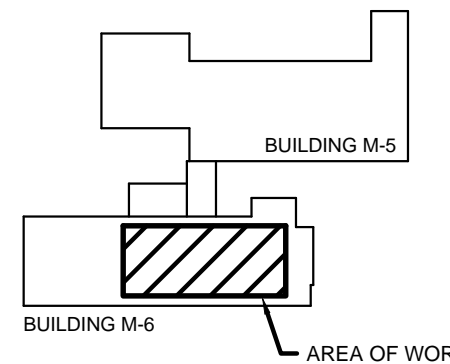
Conseil national  
de recherches Canada  
Division des services  
administratifs et gestion  
de l'immobilier

**NRC · CNRC**

GENERAL NOTES:

1. DRAWINGS TO BE READ IN CONJUNCTION WITH ALL CONTRACT DRAWINGS AND PROJECT SPECIFICATIONS.
2. DRAWINGS INDICATE GENERAL ROUTING OF SERVICES ONLY. CONTRACTOR TO BE RESPONSIBLE TO PROVIDE ANY ADDITIONAL LABOUR AND MATERIALS REQUIRED TO OFFSET AROUND EXISTING BUILDING FEATURES AND SERVICES TO AVOID INTERFERENCES.
3. CONTRACTOR TO VERIFY ALL DIMENSIONS AND CLEARANCES ON SITE PRIOR TO DEMOLITION OR CONSTRUCTION AND REPORT ANY DISCREPANCIES OR OMISSIONS TO DEPARTMENTAL REPRESENTATIVE.
4. CONTRACTOR TO VISIT SITE AND FULLY FAMILIARIZE THEMSELVES WITH THE SCOPE OF WORK PRIOR TO PROJECT COMMENCEMENT.
5. ALL TRADES TO COORDINATE WORK ON SITE TO AVOID ANY CONFLICTS AND/OR INTERFERENCES.
6. ANY AND ALL REQUIRED SHUTDOWNS SHALL BE COORDINATED WITH DEPARTMENTAL REPRESENTATIVE.
7. ALL EQUIPMENT AND SYSTEM INSTALLATIONS SHALL BE IN ACCORDANCE WITH NATIONAL BUILDING CODE AND NATIONAL PLUMBING CODE AS APPLICABLE.
8. ALL EQUIPMENT AND SYSTEM INSTALLATIONS SHALL BE IN ACCORDANCE WITH MANUFACTURERS RECOMMENDATIONS.
9. DO NOT SCALE DRAWINGS.

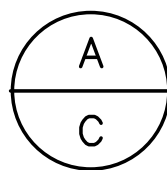
KEYPLAN



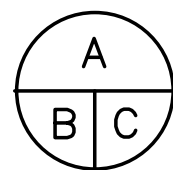
0	22 05 2014	ISSUED FOR TENDER	ALS
No.	Date	Revision	By: For:

Date Printed 22 05 2014 Date imprimée

- Verify all dimensions and site conditions and be responsible for same
- Vérifier toutes les dimensions et l'état des lieux et en assumer la responsabilité



A Detail no.  
No. du détail  
B Location drawing no.  
sur dessin no.  
C Drawing no.  
dessin no.



project **M-06 HOT WELL PIPING REPLACEMENT** projet

**MONTREAL ROAD CAMPUS**

drawing dessin

PIPING SCHEMATIC  
NEW WORK

designed <b>ALS</b>	conçu	date <b>APR 2014</b>	date
drawn <b>RCAS/ALS</b>	dessiné	scale <b>AS SHOWN</b>	échelle
checked <b>RGC/BV</b>	vérifié	sheet <b>G14</b> of/de <b>G14</b>	feuille
approved <b>BV</b>	approuvé	W.O.no. <b>9100029897</b>	D.T.no.

dwg.no. **3562-G14** dessin no.