



Public Works and
Government Services
Canada

Travaux Publics et Services
Gouvernementaux Canada



Aboriginal Affairs and
Northern Development Canada

Canada

REAL PROPERTY SERVICES
Western Region

SITE REMEDIATION PROGRAM

DRAWING INDEX	
Sheet No.	TITLE
RA01648 C00	SHEET LIST
OUTPOST ISLAND MINE SITE	
RA01648 C01	SITE LOCATION PLAN
RA01648 C02	EXISTING FEATURE PLAN (OUTPOST ISLAND)
RA01648 C03	EXISTING FEATURE PLAN (EAST ISLAND)
RA01648 C04	REMEDIATION WORKS (OUTPOST ISLAND)
RA01648 C05	REMEDIATION WORKS (EAST ISLAND)
RA01648 C06	CONTAMINATED SOIL REMEDIATION PLAN
RA01648 S01	STRUCTURAL DETAILS
BLANCHET MINE SITE	
RA01648 C07	SITE LOCATION PLAN
RA01648 C08	EXISTING FEATURE PLAN (BEACH AND CAMP AREA)
RA01648 C09	EXISTING FEATURE PLAN (MINE AREA)
RA01648 C10	REMEDIATION WORKS
RA01648 C11	CONTAMINATED SOIL REMEDIATION WORKS
RA01648 C12	ENGINEERED CAP AND MINE CLOSURE PLAN AND DETAILS
COOPER PASS MINE SITE	
RA01648 C13	SITE LOCATION PLAN
RA01648 C14	EXISTING FEATURE PLAN
RA01648 C15	REMEDIATION WORKS
RA01648 C16	CONTAMINATED SOILS REMEDIATION WORKS AND ENGINEERED CAP PLAN AND DETAILS
WILSON ISLAND AND WALDRON MINE SITES	
RA01648 C17	SITE LOCATION AND REMEDIATION WORKS PLAN

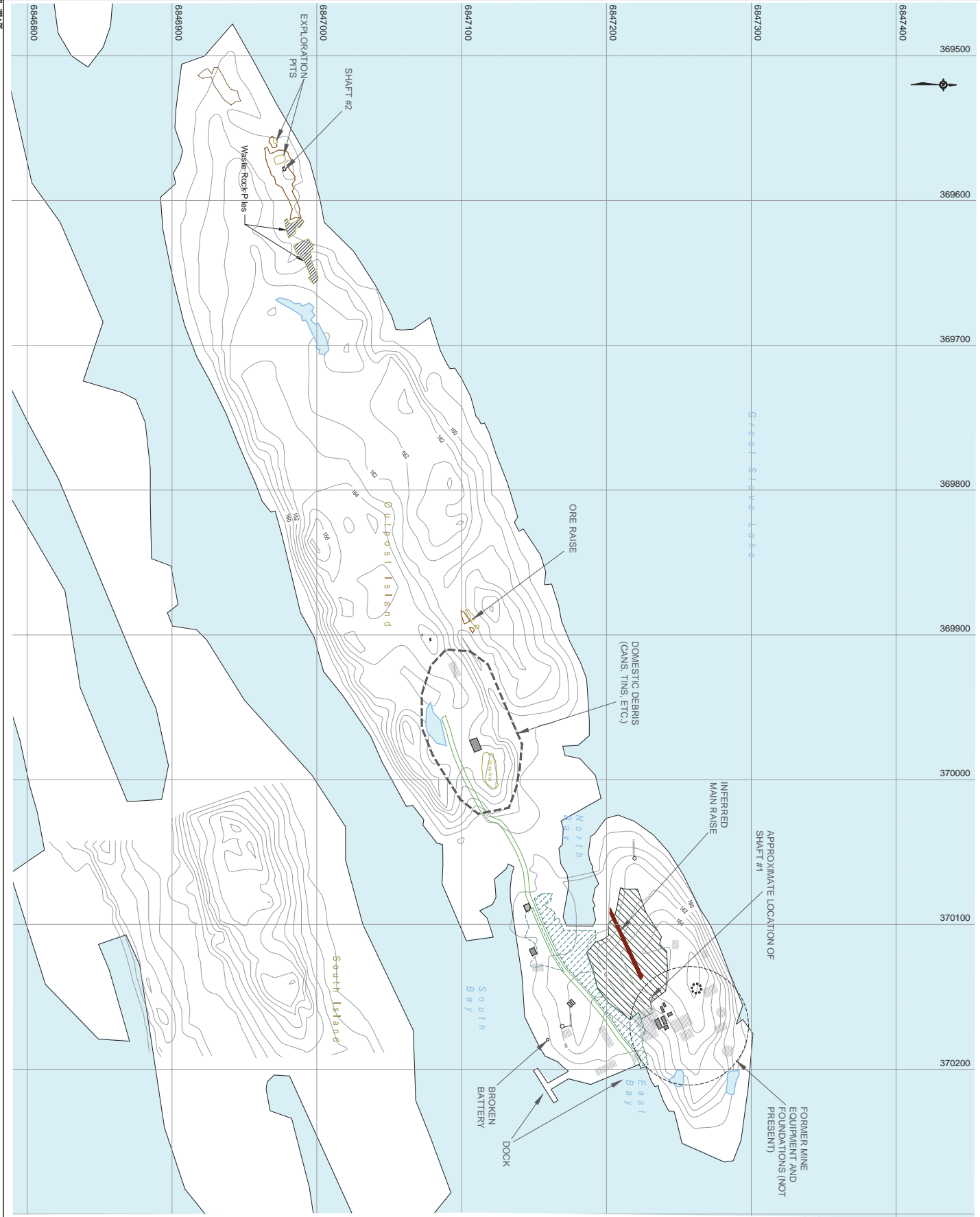


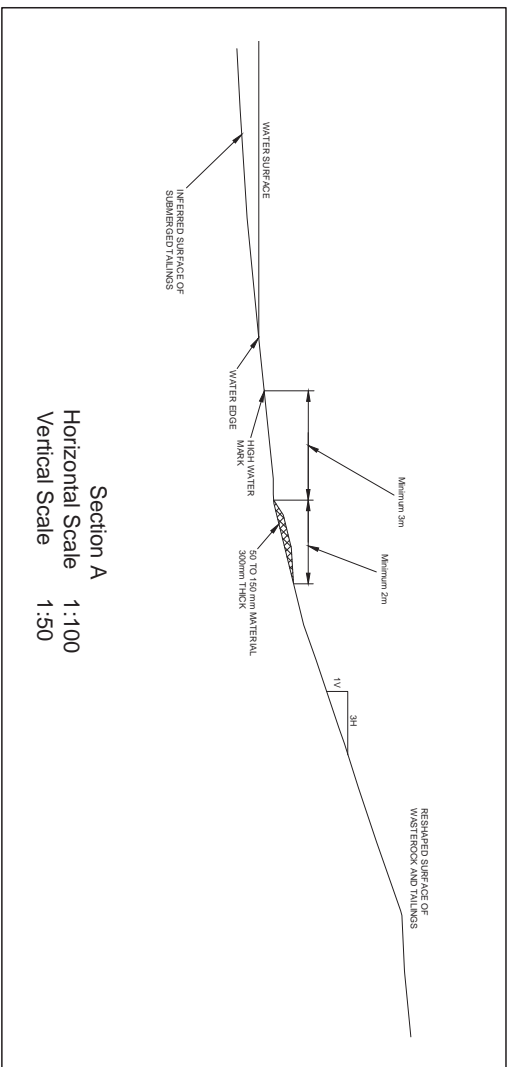
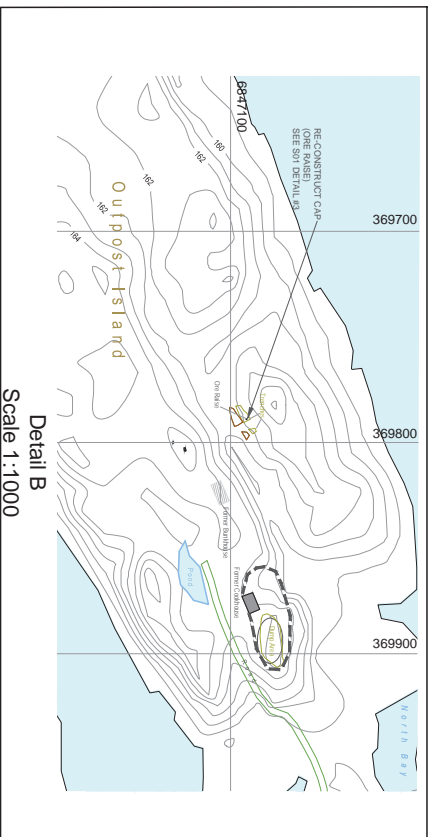
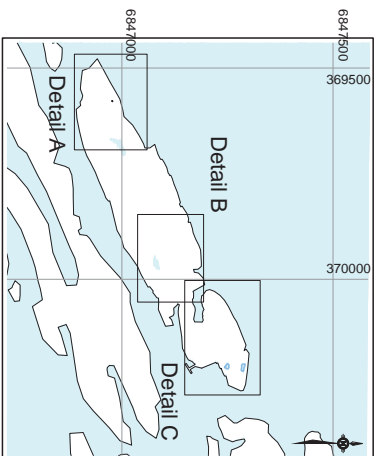
GREAT SLAVE LAKE MINE SITES
REMEDIATION PROJECT
ISSUED FOR TENDER SET - MARCH 2014

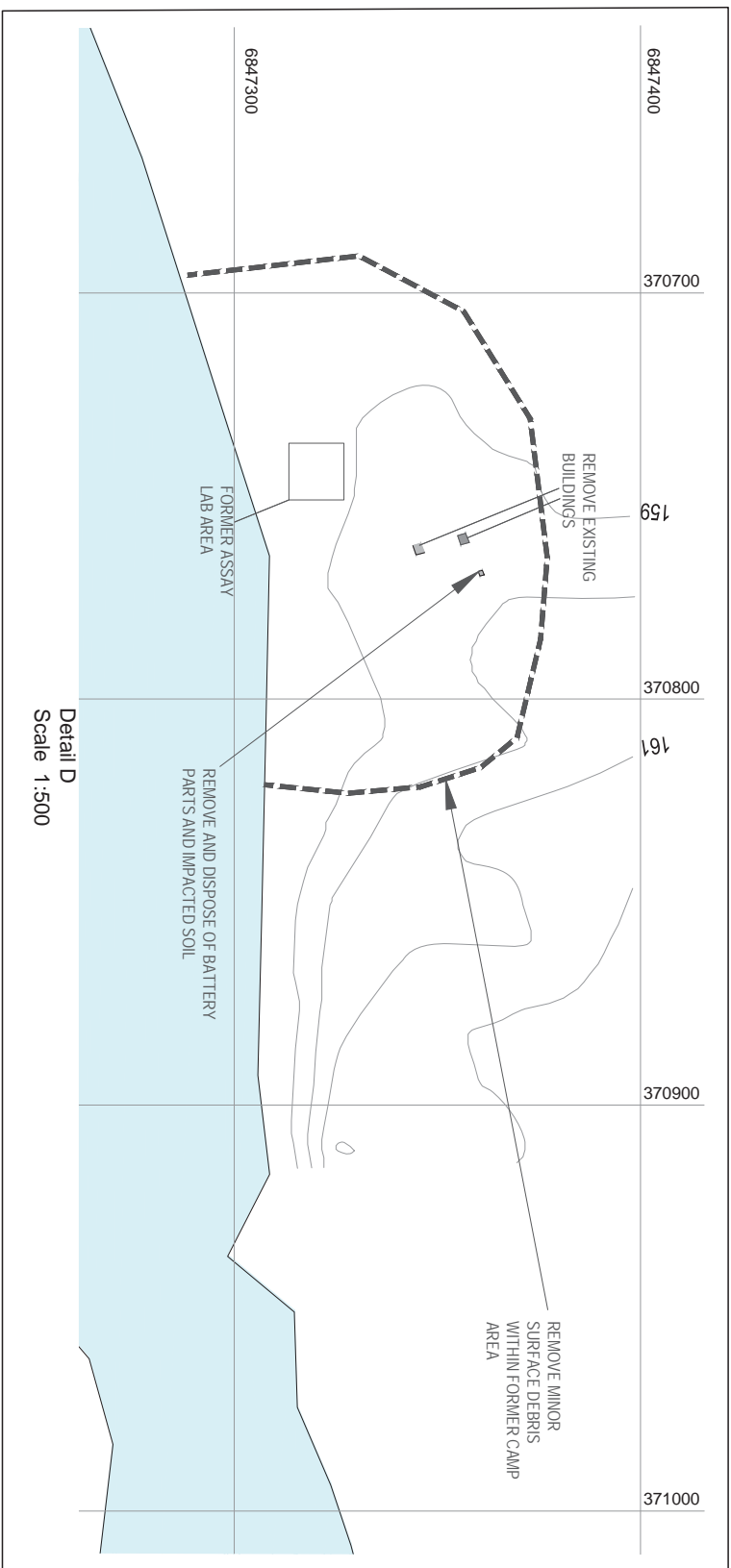
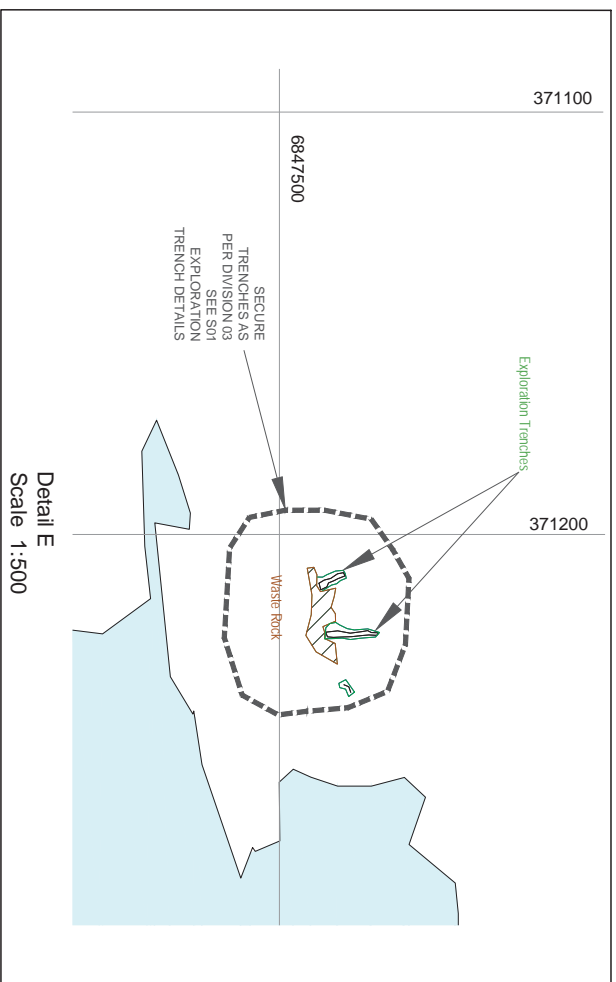
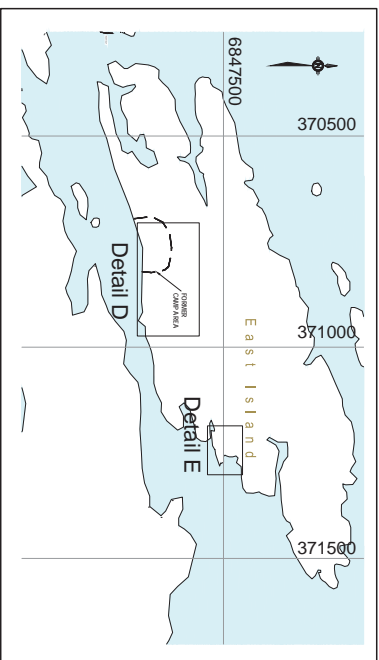
TENDER SET
NOT FOR CONSTRUCTION

- WASTE ROCK
- WASTE ROCK/
TAILINGS
- TAILINGS
- EXISTING
CONCRETE
FOUNDATIONS
- PONDED WATER

SHEET NO. 001		SHEET NO. 002	
GREAT SLAVE LAKE MINE SITES REMEDIATION PROJECT		GREAT SLAVE LAKE MINE SITES REMEDIATION PROJECT	
OUTPOST ISLAND MINE SITE Existing Remedial Plan (Outpost Island)		OUTPOST ISLAND MINE SITE Existing Remedial Plan (Outpost Island)	
Prepared by: C. DUBOIS/LLC		Prepared by: C. DUBOIS/LLC	
Drawn by: P. J. DUBOIS		Drawn by: P. J. DUBOIS	
Checked by: C. DUBOIS/LLC		Checked by: C. DUBOIS/LLC	
Project No: 164164-001		Project No: 164164-001	
Scale: 1:500		Scale: 1:500	



[illegible][illegible]



**Atsuginega Atsiga and
Northern Development Canada**
Canada
NWT REGIONAL OFFICE
YELLOWKNIFE, NWT

**Public Works and
Government Services
Canada**
REGAL, PROPERTY SERVICES
Western Region

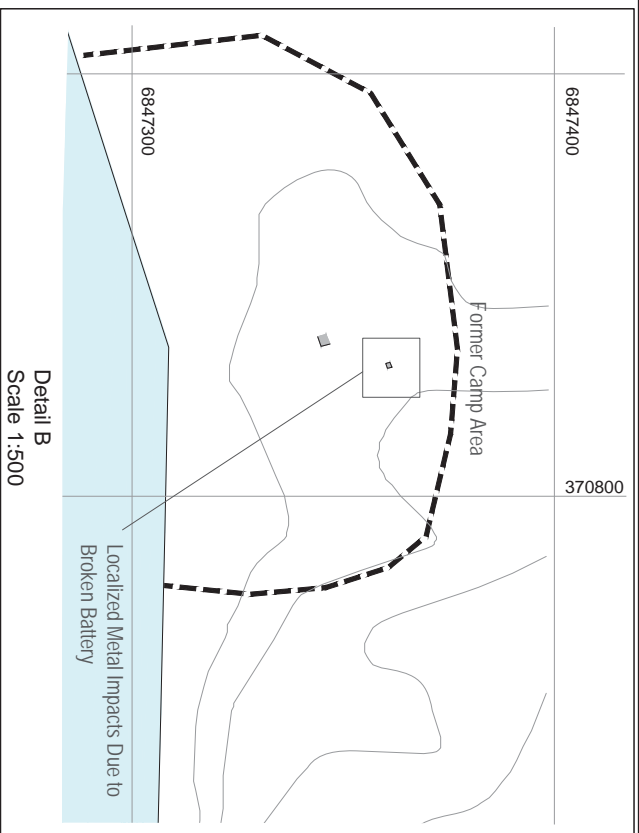
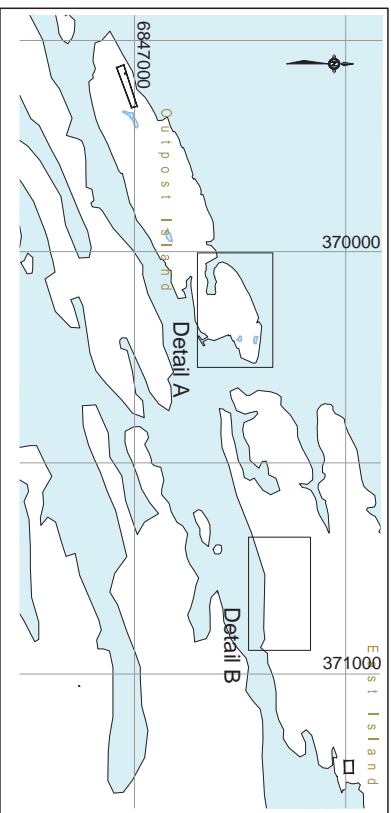
**Tender and a
Notice of Intent to Award**
for
**Construction of a
Remedial Works**

TENDER SET
NOT FOR CONSTRUCTION

BIDDING
WITH REG. OFFICE
YELLOWKNIFE

WATER MARK

<p> 1 2 3 4 5 6 7 8 9 10 11 12 13 14 15 16 17 18 19 20 21 22 23 24 25 26 27 28 29 30 31 32 33 34 35 36 37 38 39 40 41 42 43 44 45 46 47 48 49 50 51 52 53 54 55 56 57 58 59 60 61 62 63 64 65 66 67 68 69 70 71 72 73 74 75 76 77 78 79 80 81 82 83 84 85 86 87 88 89 90 91 92 93 94 95 96 97 98 99 100 </p>	<p> 1 2 3 4 5 6 7 8 9 10 11 12 13 14 15 16 17 18 19 20 21 22 23 24 25 26 27 28 29 30 31 32 33 34 35 36 37 38 39 40 41 42 43 44 45 46 47 48 49 50 51 52 53 54 55 56 57 58 59 60 61 62 63 64 65 66 67 68 69 70 71 72 73 74 75 76 77 78 79 80 81 82 83 84 85 86 87 88 89 90 91 92 93 94 95 96 97 98 99 100 </p>	<p> 1 2 3 4 5 6 7 8 9 10 11 12 13 14 15 16 17 18 19 20 21 22 23 24 25 26 27 28 29 30 31 32 33 34 35 36 37 38 39 40 41 42 43 44 45 46 47 48 49 50 51 52 53 54 55 56 57 58 59 60 61 62 63 64 65 66 67 68 69 70 71 72 73 74 75 76 77 78 79 80 81 82 83 84 85 86 87 88 89 90 91 92 93 94 95 96 97 98 99 100 </p>	<p> 1 2 3 4 5 6 7 8 9 10 11 12 13 14 15 16 17 18 19 20 21 22 23 24 25 26 27 28 29 30 31 32 33 34 35 36 37 38 39 40 41 42 43 44 45 46 47 48 49 50 51 52 53 54 55 56 57 58 59 60 61 62 63 64 65 66 67 68 </p>
---	---	---	---



NOTE:
1. MORE INFORMATION ON THE PHC IMPACTS IS PROVIDED IN APPENDIX A OF SPECIFICATIONS

	LOCATIONS OF LOCALIZED PHASE EXCEEDANCES
	EXISTING FOUNDATIONS
	HISTORICAL FOUNDATIONS
	WASTE ROCK AND TAILINGS STOCKPILE

TENDER SET
NOT FOR CONSTRUCTION

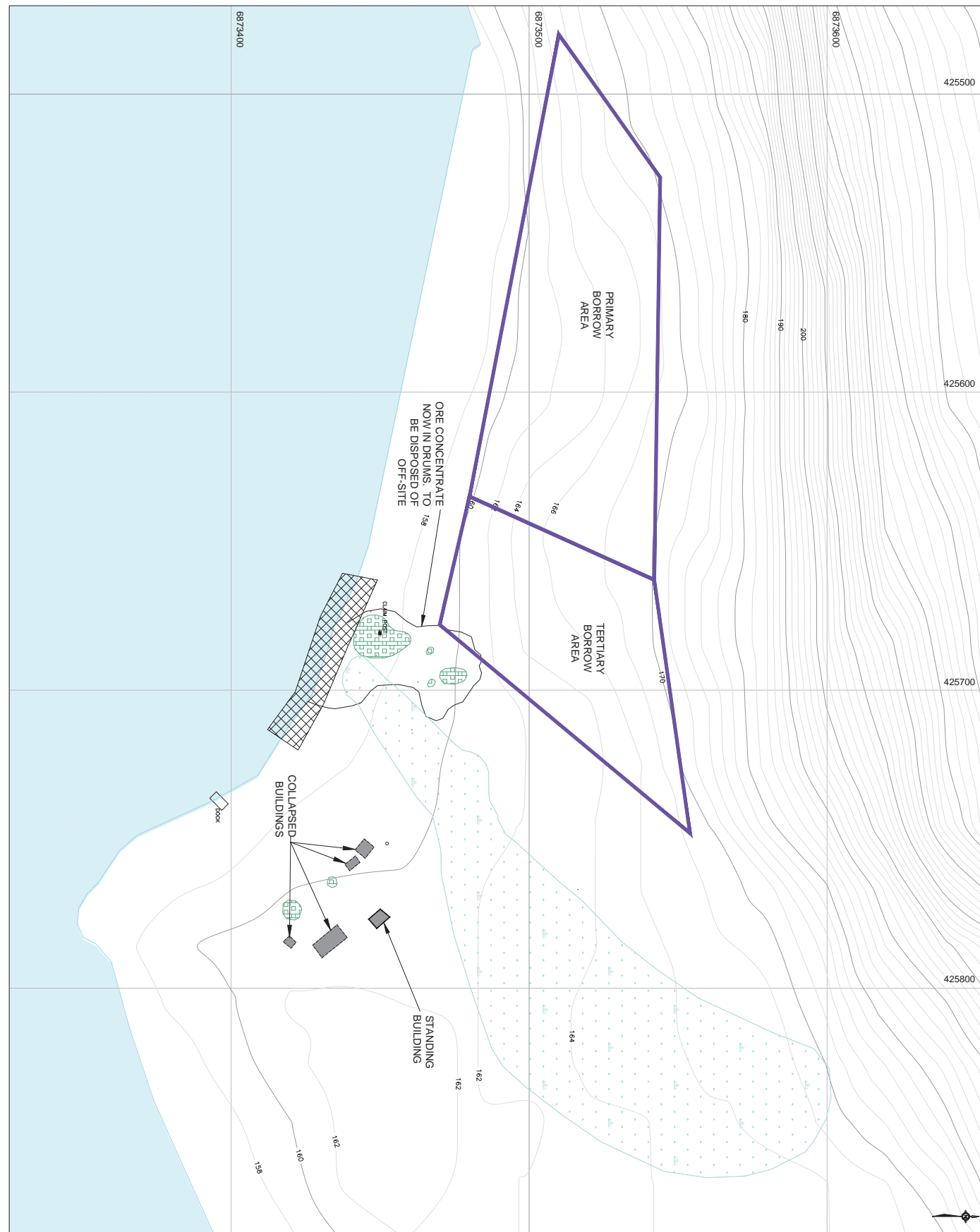
Canada
 Aboriginal Affairs and
 Northern Development Canada
Canada
 NWT REGIONAL OFFICE
 YELLOWKNIFE, NWT

**GREAT SLAVE LAKE MINE
SITES REMEDIATION PROJEC**

OUTPOST ISLAND
MINE SITE
CONTAMINATED SOIL
REMEDICATION WORKS

designed by	C. GOA VILLE	architect
drawn by	P. J. LEMING	draftsman
approved by	C. GOA VILLE	approved
project manager		Responsible for Project
date	1/3/2001	scale
project no.	R047648.001	sheet no.
date	01/03/2001	date
		of 19
		C06





 <p>Public Works and Government Services Canada</p>	 <p>Titanium public Services province Ontario</p>
 <p>Aboriginal Affairs and Northern Development Canada</p>	 <p>REAL PROPERTY SERVICES Western Region</p>
 <p>Canada NWT REGIONAL OFFICE YELLOWKNIFE, NWT</p>	

TENDER SET
NOT FOR CONSTRUCTION

LEGEND:

					
STANDARD AREA	RESEARCH AREA	AREA OF CORE CONCERN	RESTRICTED ACCESS AREA, NO BARGE OR CRANE ALLOWED	190 CONSTRUCTION MATERIALS AREA	WELT AREA



[illegible]

REFERENCE:

1. OcularDermatol Project. 08/03/2016. PMID 111534
2. 08/03/2016. PMID 111534



INVOICE	DESCRIPTION	DATE
1	ISSUED FOR TRUCK	APR. 2
2	90% PAY. 1ST	DEC. 2

A source drawing no. de dessin no.
 B detail on drawing no. detail sur dessin no.

**GREAT SLAVE LAKE MINE
SITES REMEDIATION PROJECT**

BLANCHET MINE SITE
Existing Feature Plan
(Beach and Camp Area)

designed by	curriculum
C. GRAYELLE	

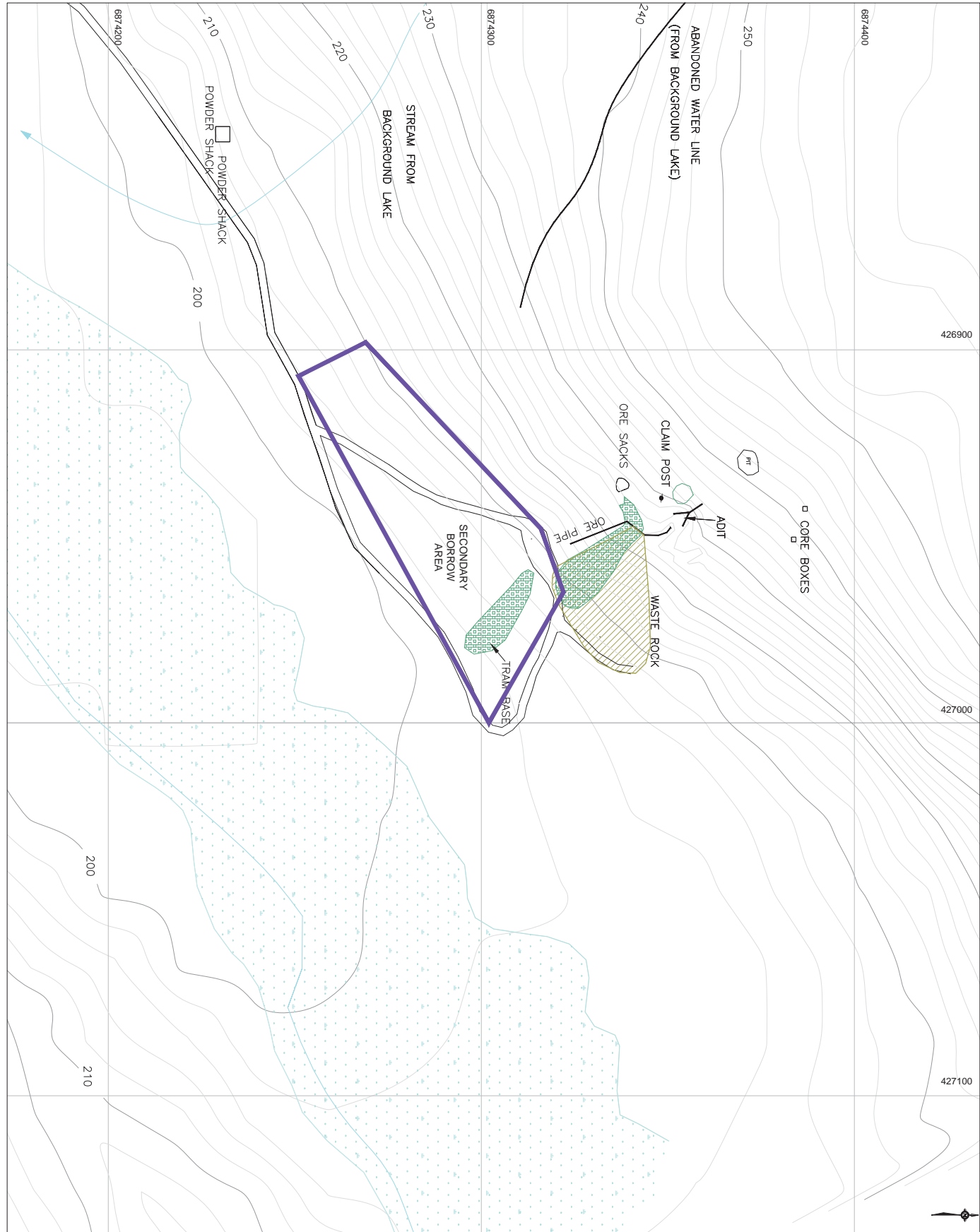
P. R. LEMING	signature page
approved by	

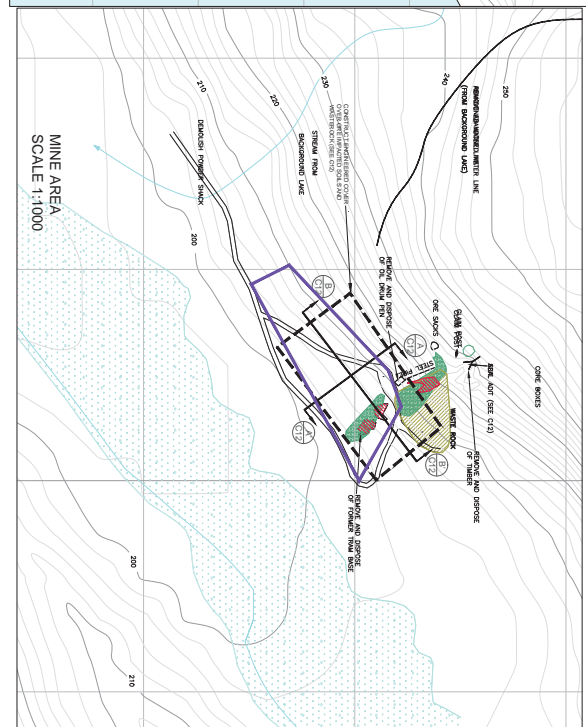
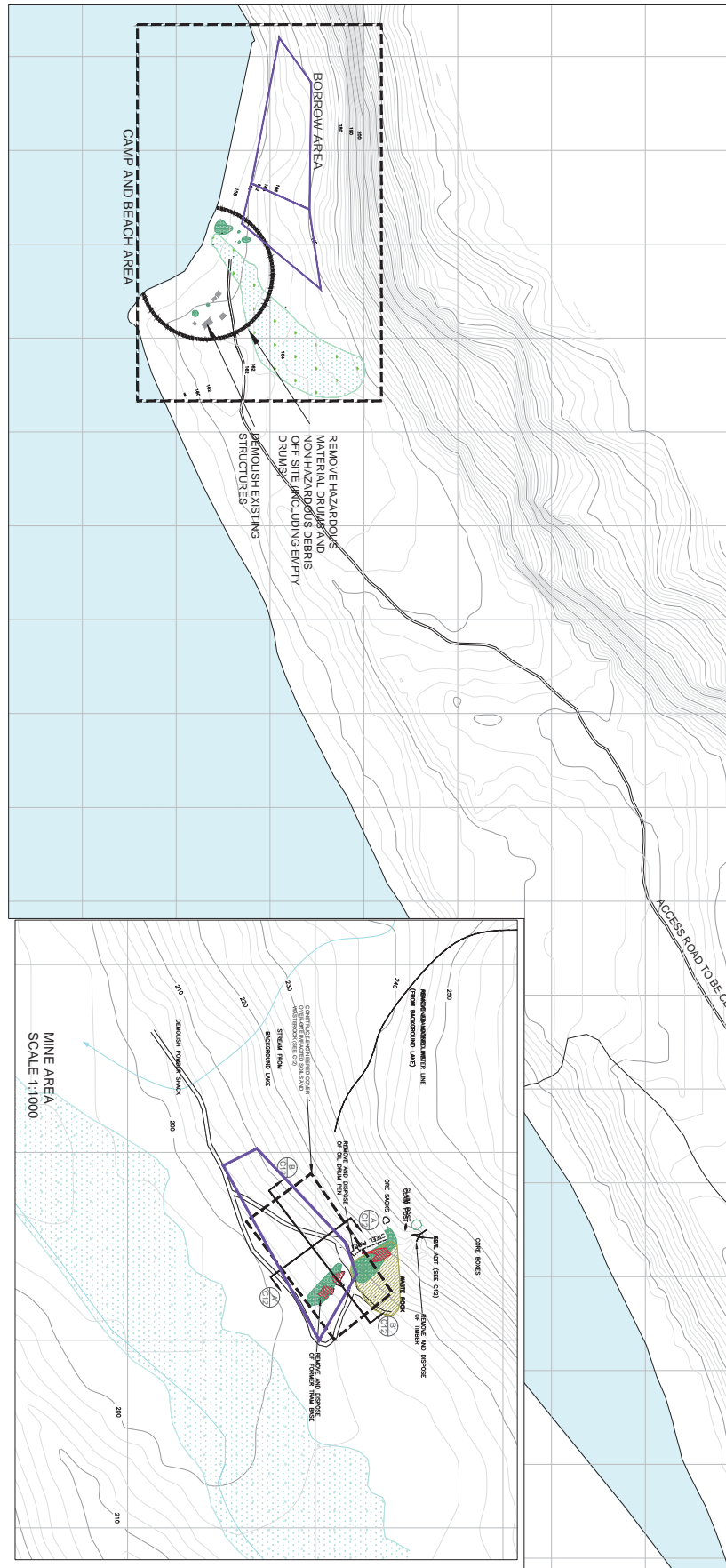
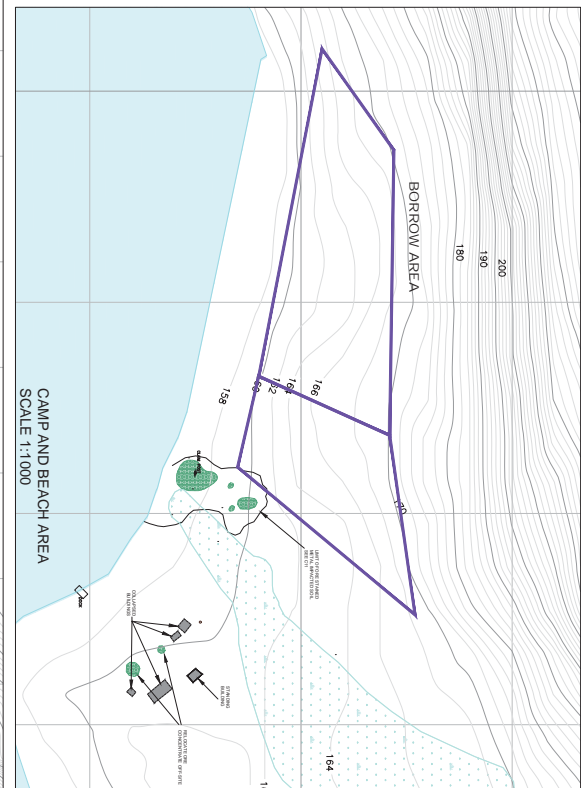
[illegible]

E:2010	
project no.	project no.
R.041648.001	C08

date	date	OP	TR
December 7, 2013			

R 0416 (Rev. 001) - 03

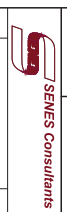


[illegible]

TENDER SET
NOT FOR CONSTRUCTION

[illegible]

REFERENCE:
1. *Colony for the Record!*
Cody, W. 2009. Pyma II ESA
Cody, W. 2009.
2. *SON-ES/PLANZ*
Project N to 3000' 3/11
Pyma II/ESA, March 2011

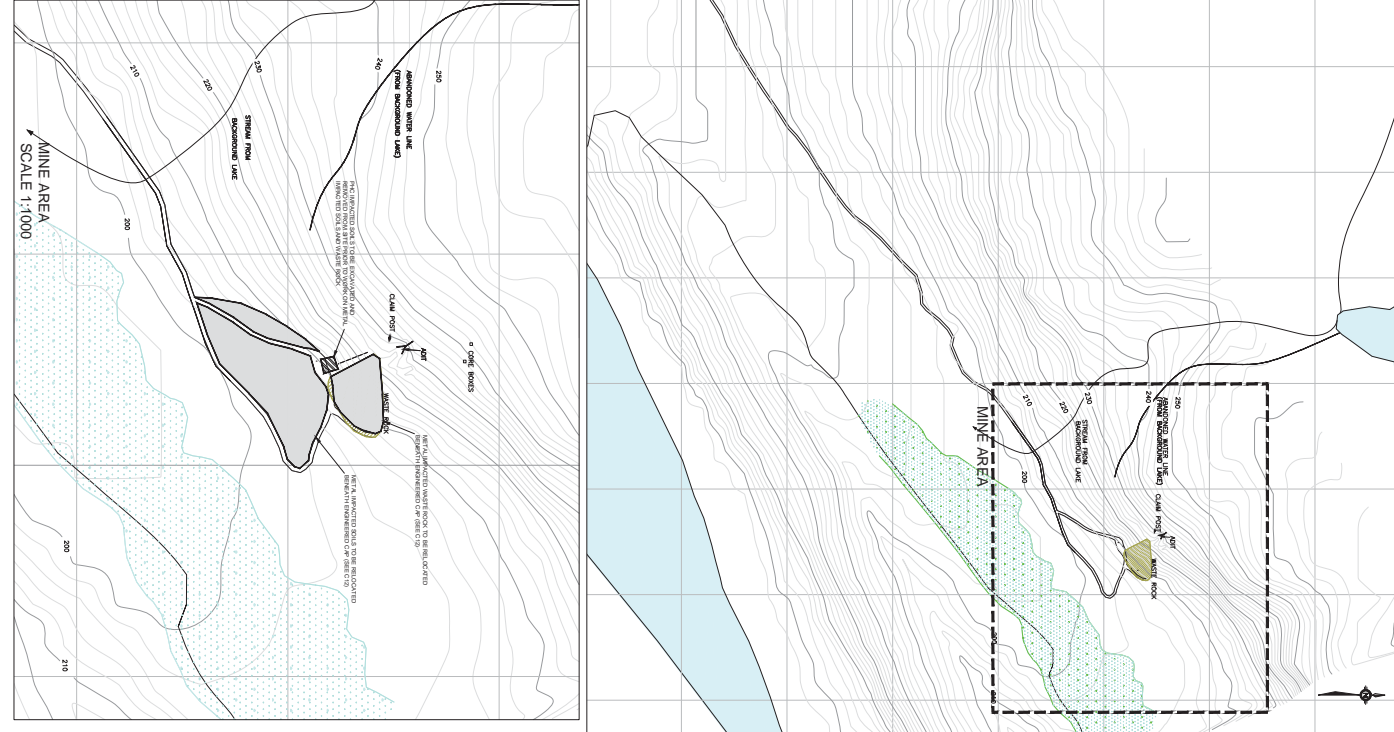
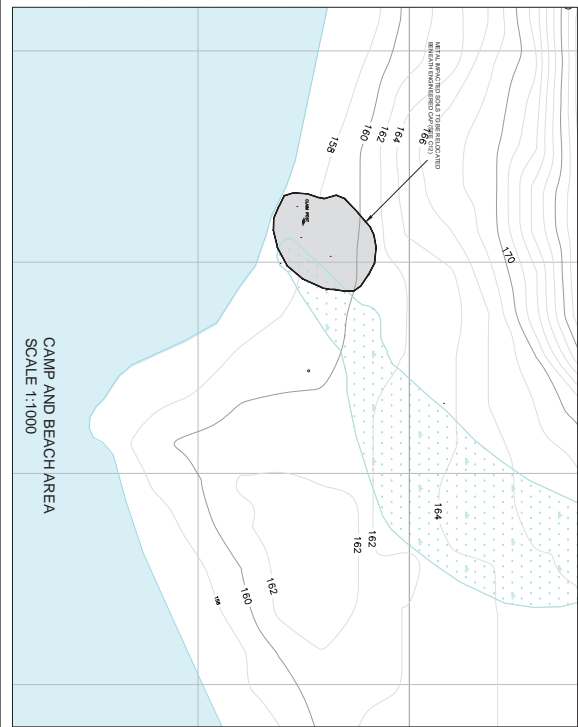


PROBLEME	DESCRIPTION	TYPE DE PROBLEME	
		PROBLEME	TYPE
1	UNIFORM FOR TANGENT ONE SPICE, EIGHT	TYPE 25	TYPE 25
2		TYPE 25	TYPE 25

**GREAT SLAVE LAKE MINE
SITES REMEDIATION PROJECT**

BLANCHET MINE SITE
CONTAMINATED SOIL
REMEDICATION WORKS

designed by	CORVILLE	series post	
drawn by	P. FLEMMING	detailed post	
approved by	CORVILLE	signature post	
Project: Project Name:		Accession Number as in Project File:	
scale	1:2000	edition	multiple
project no.	R041668.001	print no.	C11
date	December 2013	year	OF '19




TENDER SET
NOT FOR CONSTRUCTION

[illegible]

REFERENCE:

1. Chakrabarti SK, et al. *Am J Surg* 1994; 168: 111-115.
2. Saito T, et al. *Am J Surg* 1994; 168: 116-119.
3. Chakrabarti SK, et al. *Am J Surg* 1994; 168: 120-123.



SENEC Consultants



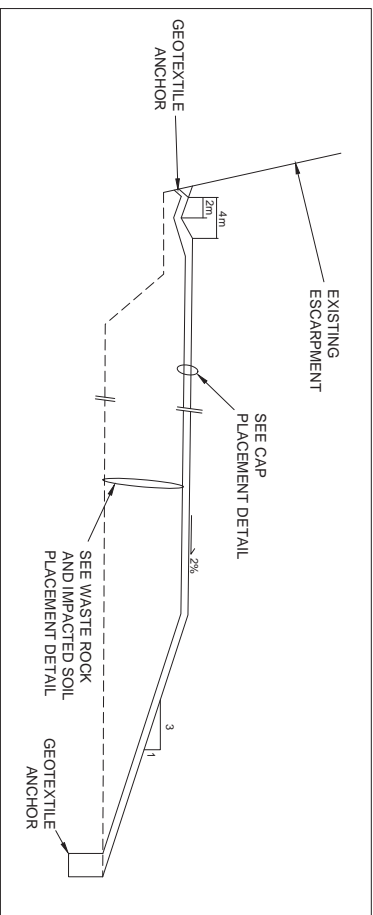
A detail number
 B source drawing no.
 C detail on drawing no.
 detail sur dessin no.

**GREAT SLAVE LAKE MINE
SITES REMEDIATION PROJECT**

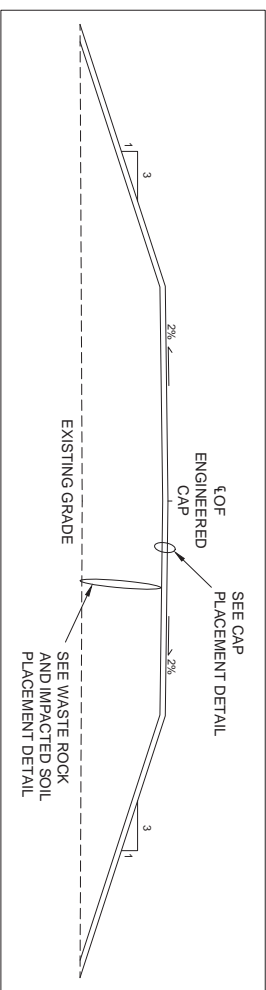
BLANCHET MINE SITE
ENGINEERED CAP
PLAN & DETAILS

designed by	CORAVILLE	status	projet
drawn by	P. L. EMMING	details	not
approved by	CORAVILLE	approved	not
PROJECT Manager		Architectural de Projets 3750	
notes	AS NOTED	quantity	sheet
project no.	R041648.001	project no.	C12
date	Dec 07/09/2013	date	07/10

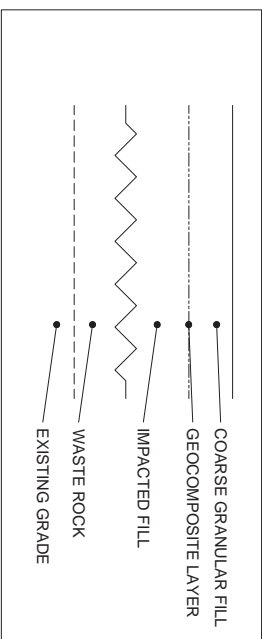
ENGINEERED CAP DETAILS



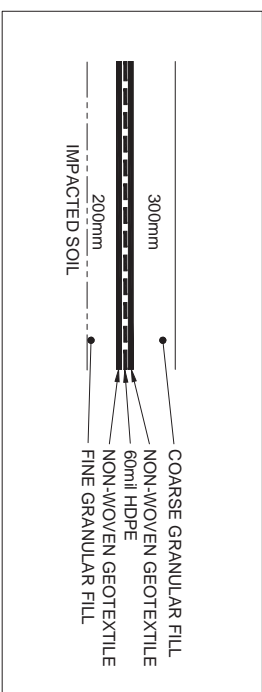
SECTION A-A'



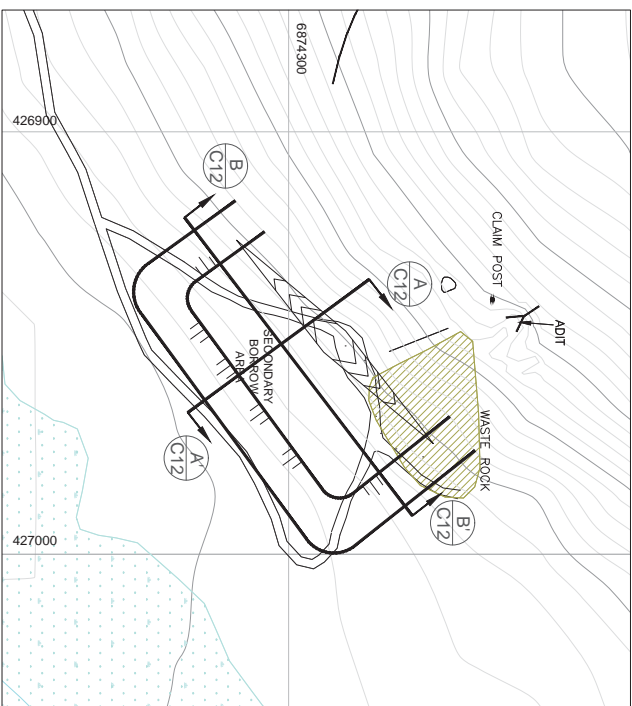
SECTION B-B'



WASTE ROCK and IMPACTED SOIL
PLACEMENT DETAIL

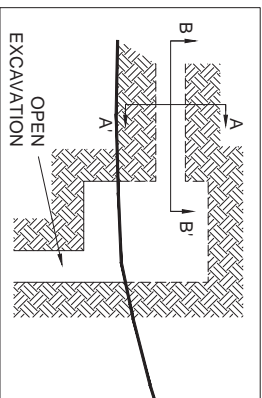


CAP PLACEMENT DETAIL

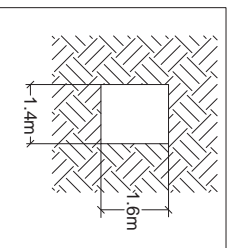


Scale 1:500

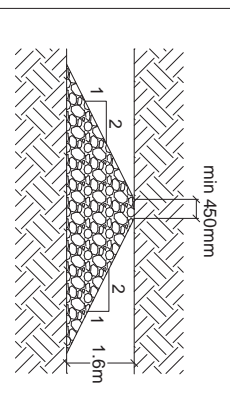
ADIT CLOSURE DETAILS



PLAN VIEW SKETCH OF ADIT



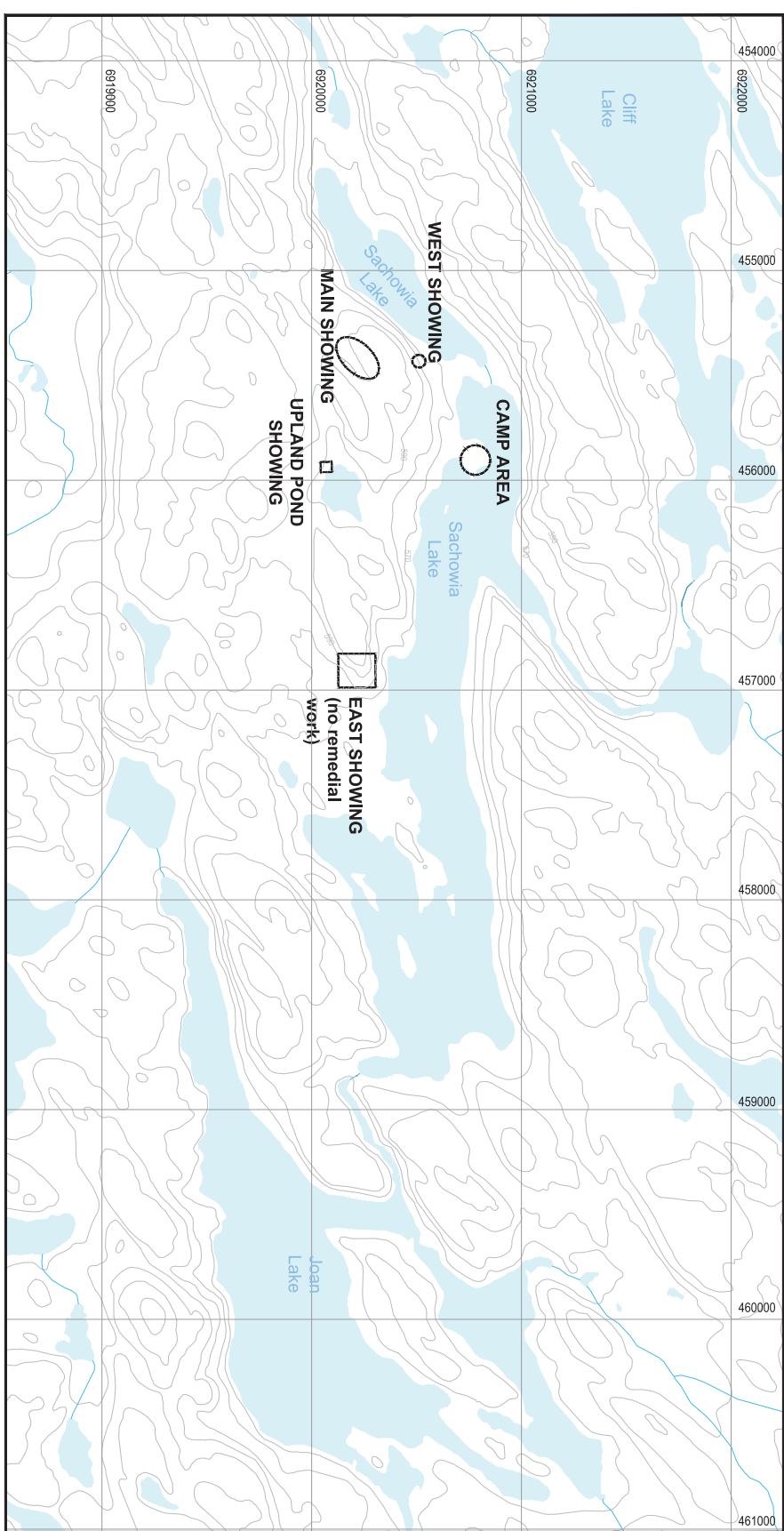
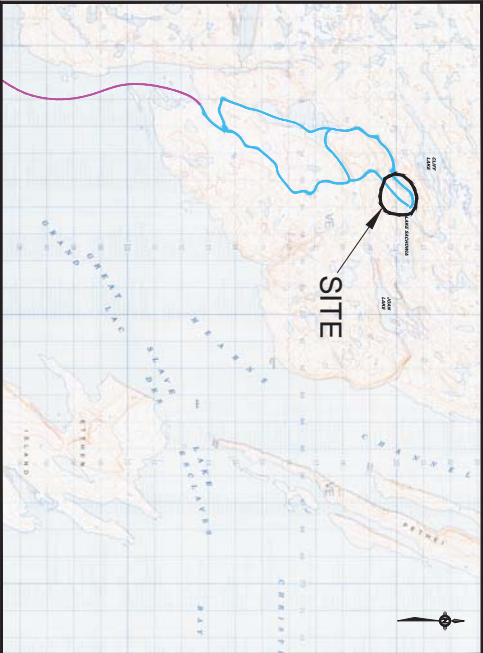
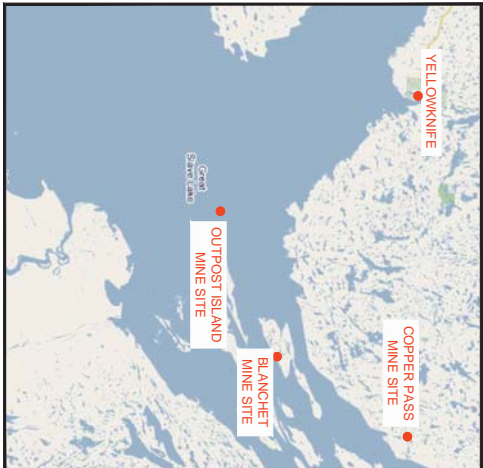
SECTION A-A'



SECTION B-B'

EXISTING OPENING SIZE

WASTE ROCK SEAL IN ADIT



Printed on 100% recycled paper with soy-based inks.

REAL PROPERTY SERVICES

Adopting Atlas and Northern Development Canada

Canada

NWT REGIONAL OFFICE

YELLOWKNIFE, NWT

100%

100%

100%

100%

100%

100%

100%

100%

100%

100%

100%

100%

100%

100%

100%

100%

100%

100%

100%

100%

100%

100%

100%

100%

100%

100%

100%

100%

100%

100%

100%

100%

100%

100%

100%

100%

100%

100%

100%

100%

100%

100%

100%

100%

100%

100%

100%

100%

100%

100%

100%

100%

100%

100%

100%

100%

100%

100%

100%

100%

100%

100%

100%

100%

100%

100%

100%

100%

100%

100%

100%

100%

100%

100%

100%

100%

100%

SENES Consultants

100%

100%

100%

100%

100%

100%

100%

100%

100%

100%

100%

100%

100%

100%

100%

100%

100%

100%

100%

100%

100%

100%

100%

100%

100%

100%

100%

100%

100%

100%

100%

100%

100%

100%

100%

100%

100%

100%

100%

100%

100%

100%

100%

100%

100%

100%

100%

100%

100%

100%

100%

100%

100%

100%

100%

100%

100%

100%

100%

100%

100%

100%

100%

100%

100%

100%

100%

100%

100%

100%

100%

100%

100%

100%

100%

100%

100%

100%

100%

100%

100%

100%

100%

100%

100%

100%

100%

100%

100%

100%

100%

100%

100%

100%

100%

100%

100%

100%

100%

100%

100%

100%

100%

100%

100%

100%

100%

100%

100%

100%

100%

100%

100%

100%

100%

100%

100%

100%

100%

100%

100%

100%

100%

100%

100%

100%

100%

100%

100%

100%

100%

100%

100%

100%

100%

100%

100%

100%

100%

100%

100%

100%

100%

100%

100%

100%

100%

100%

100%

100%

100%

100%

100%

100%

100%

100%

100%

100%

100%

100%

100%

100%

100%

100%

100%

100%

100%

100%

100%

100%

100%

100%

100%

100%

100%

100%

100%

100%

100%

100%

100%

100%

100%

100%

100%

100%

100%

100%

100%

100%

100%

100%

100%

100%

100%

100%

100%

100%

100%

100%

100%

100%

100%

100%

100%

100%

100%

100%

100%

100%

100%

100%

100%

100%

100%

100%

100%

100%

100%

100%

100%

100%

100%

100%

100%

100%

100%

100%

100%

100%

100%

100%

100%

100%

100%

100%

100%

100%

100%

100%

100%

100%

100%

100%

100%

100%

100%

100%

100%

100%

100%

100%

100%

100%

100%

100%

100%

100%

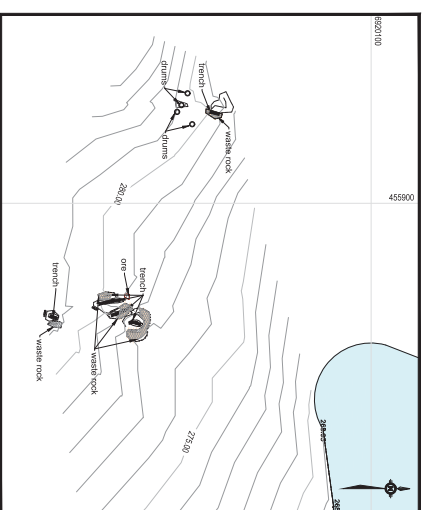
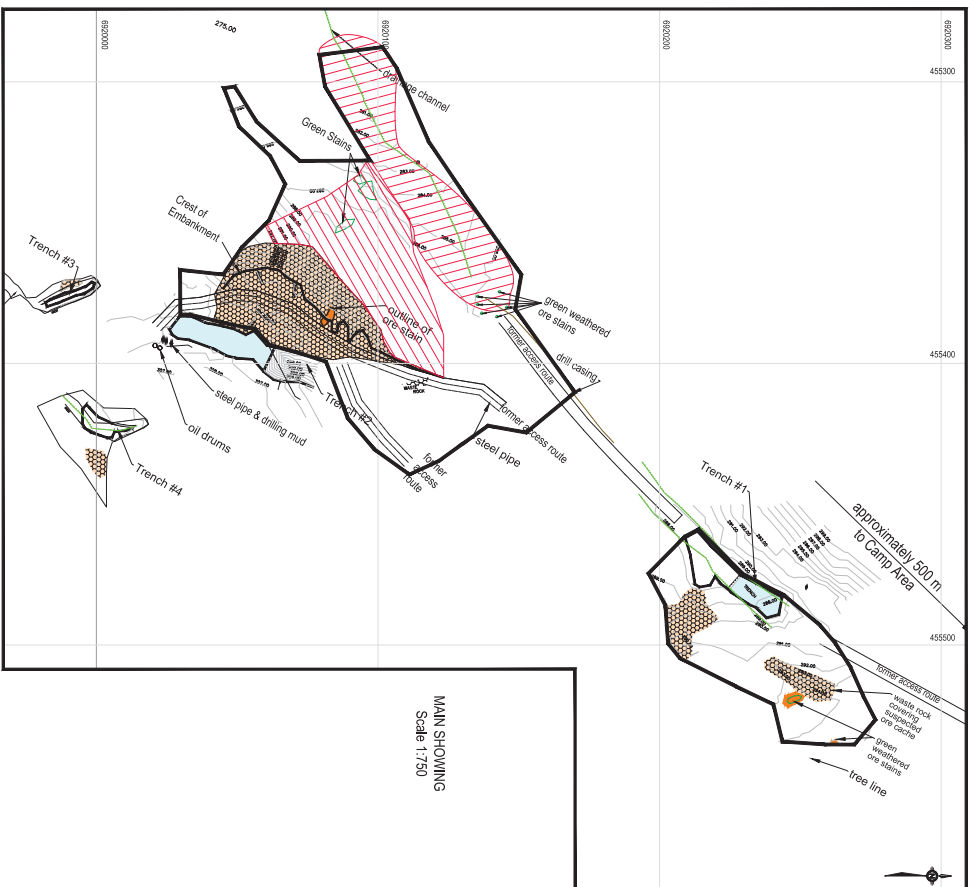
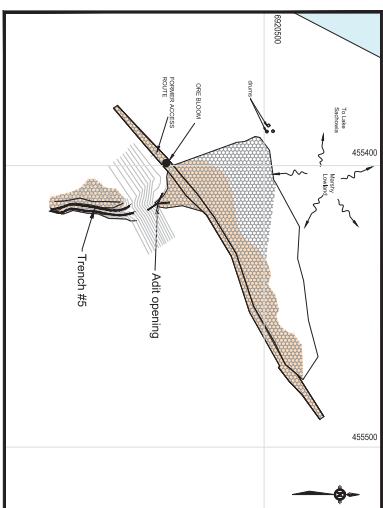
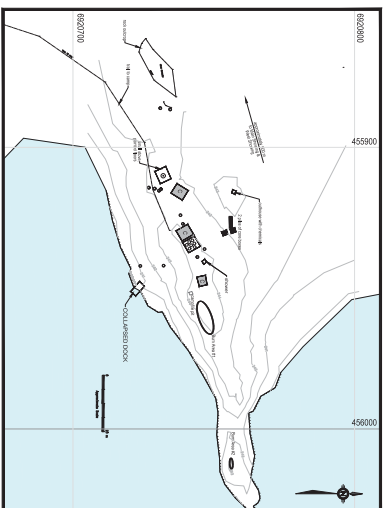
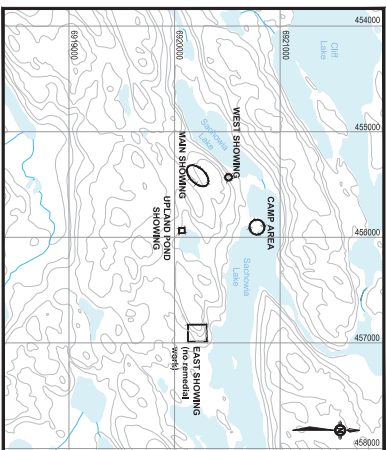
100%

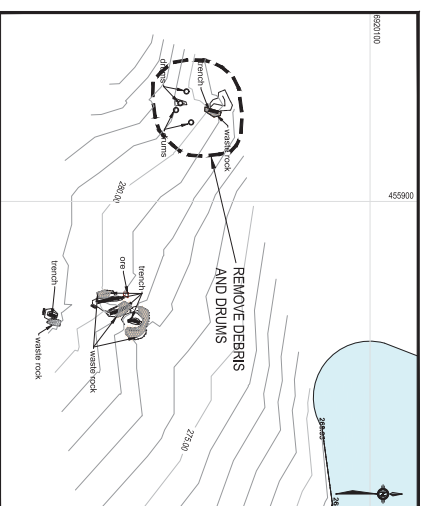
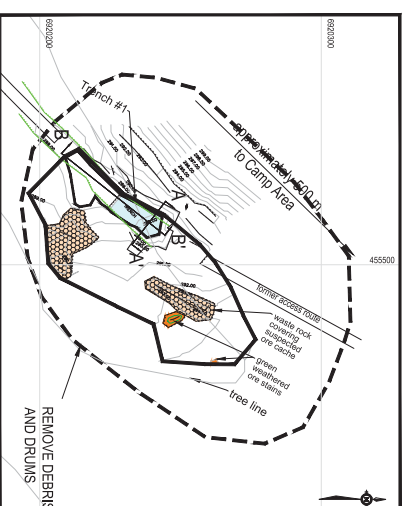
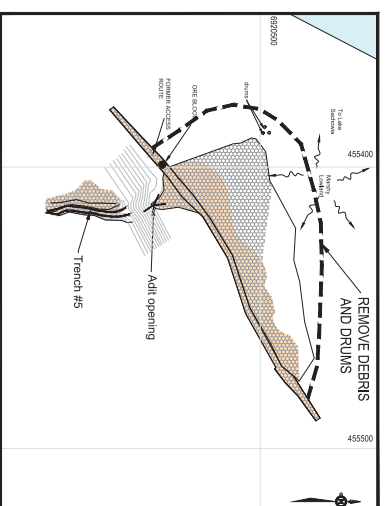
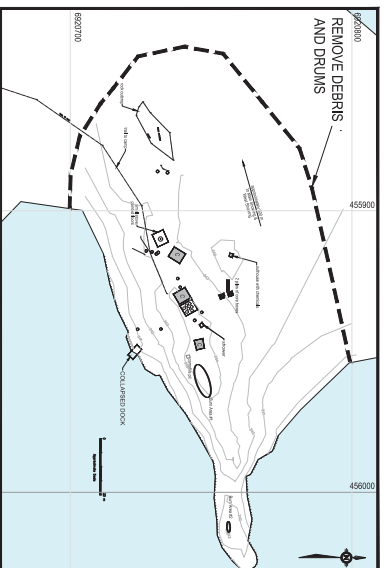
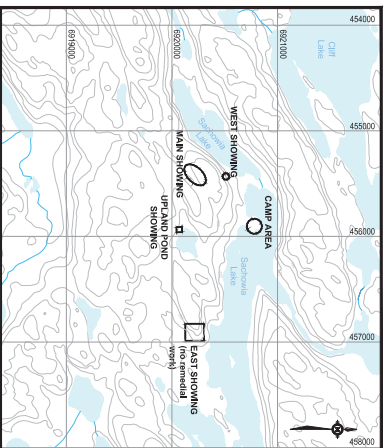
100%

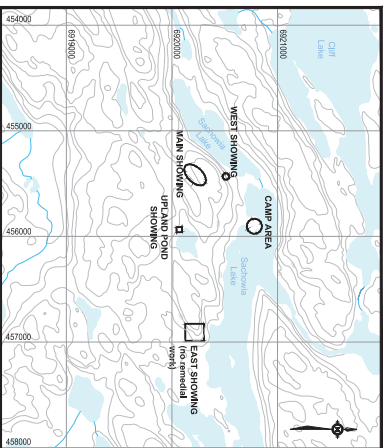
100%

100%

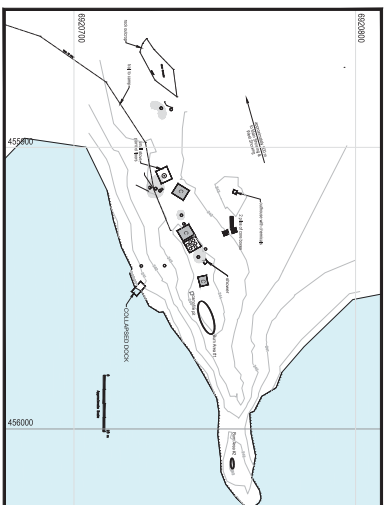
100%

[illegible]

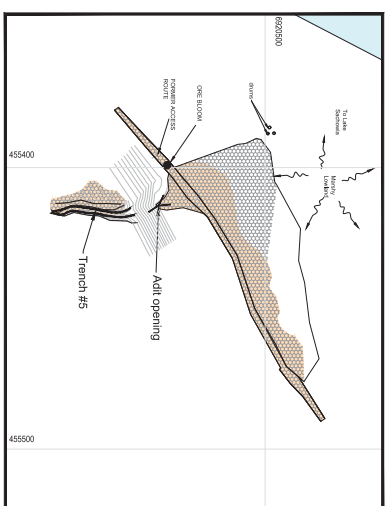
[illegible]



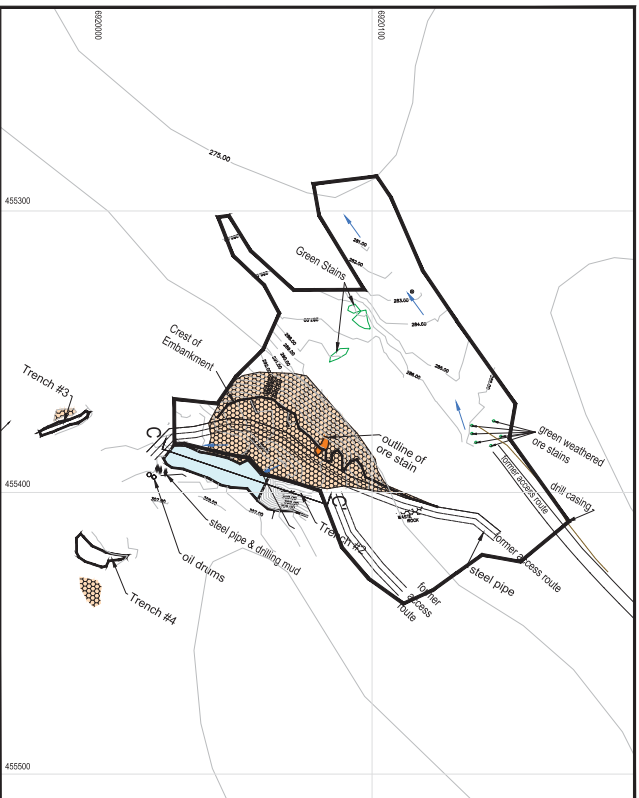
KEY PLAN
Scale 1:20,000



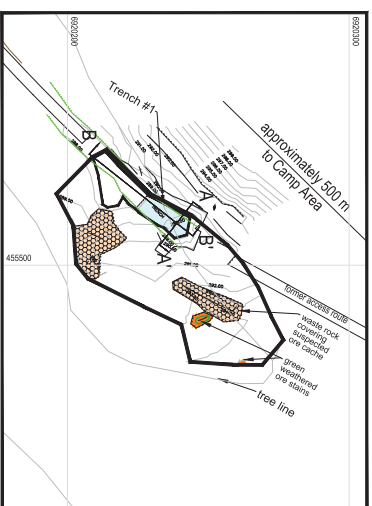
CAMP AREA
Scale 1:750



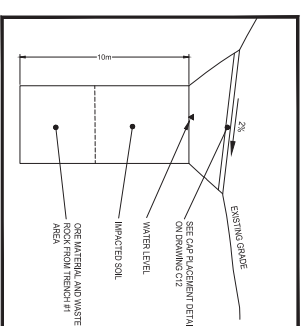
WEST SHOWING
Scale 1:750



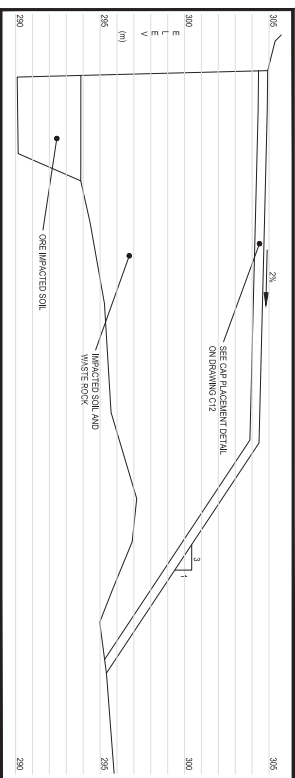
MAIN SHOWING
Trench #2
Scale 1:750



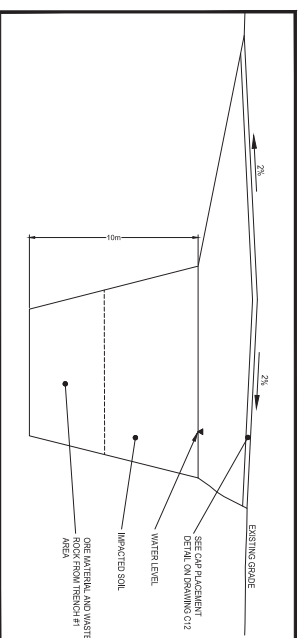
MAIN SHOWING
Trench #1
Scale 1:750



SECTION A-A'
TRENCH #1
Scale Hor 1:250
Ver 1:125

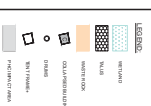


SECTION C-C'
TRENCH #2
Scale Hor 1:250
Ver 1:125



SECTION B-B'
TRENCH #1
Scale Hor 1:250
Ver 1:125

TENDER SET
NOT FOR CONSTRUCTION



NOTES:
All students receive 90%
Occasional emphasis on UTM Zwa10

Source:
Terry Wright, *Survay*
2, Duke Univ. Durham - 1-864-462-614
63-148-472-432
3, N.Y. 150-0000 Bagwood 661476

REFERENCE

1. Chakrabarti S, et al. *Pharmacol Ther* 2004; 98:123-140.
2. D'Souza R, et al. *Pharmacol Ther* 2004; 98:141-159.



1	ORDER FOR TICKETS	MAK 30	
0	WOL SPRG, KIT	SEP 25	
DESCRIPTION		DATE	

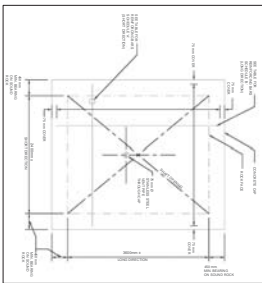
C detail on drawing not shown

**GREAT SLAVE LAKE MINE
SITES REMEDIATION PROJECT**

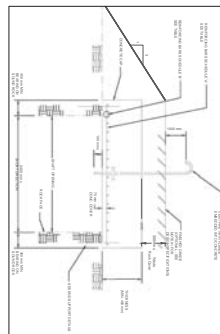
**COPPER PASS MINE SITE
CONTAMINATED SOILS
REMEDIATION WORKS
AND ENGINEERED CAP PLAN
AND DETAILS**

designed by	C. GRAVELLE	owner	
drawn by	P. LEMING	detailer	
approved by	C. GRAVELLE	approved on	
PROJECT: Project Manager		Architectural de Projets Spéciaux	
scale	AS SHOWN	estimate	sheet
project no.	R.041668.001	proj. no.	C16
date	December 2013		OF 19

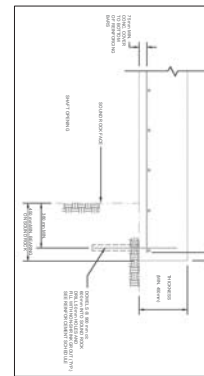
OUTPOST ISLAND MINE SITE
SHAFT #2 CLOSURE PLAN
ENGINEERED CAP DETAIL #2



ENGINEERED CAP
NOT TO SCALE



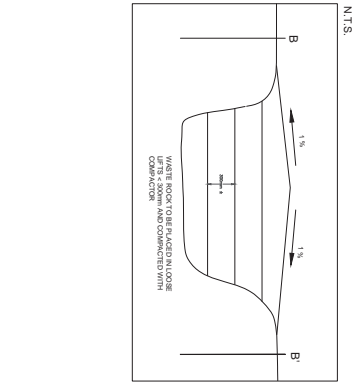
NOT TO SCALE



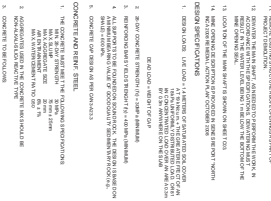
TYPICAL ENGINEERED CONCRETE CAP
REINFORCEMENT SCHEDULE FOR SHAFT #2

[illegible]

REAL PROPERTY SERVICES
Western Region

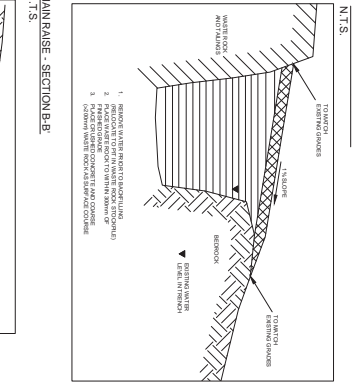


EXPLORATION TRENCH - SECTION B-B

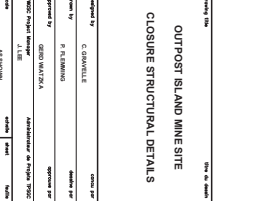


12. DERIVATIVE THE MAIN SWIFT, AS NEEDED TO PERFORM ACCORDANCE WITH THE SPECIFICATIONS, DERIVATIVE OF DERIVATION.

5. REINFORCING STEEL TO BE FURNISHED BY STEEL BARS OF GRADE 40D STEEL (CONCRETE) TO CSA (ISO) 12887.



MAIN RAISE - SECTION A-A'



SITES REMEDIATION PROGRAM

SITES REMEDIATION PROGRAM

[illegible]