

7	ISSUED FOR ADDENDUM#1	MAY 29 2014
6	ISSUED FOR TENDER	FEB 10 2014
5	REISSUED FOR APPROVAL	JAN 28 2014
4	ISSUED FOR APPROVAL	JAN 10 2014
3	ISSUED FOR 99% DESIGN	DEC 13 2013
2	ISSUED FOR 66% DESIGN	NOV 08 2013
1	ISSUED FOR REVIEW RS-3	OCT 11 2013

HIGHWAY 430 REALIGNMENT

DEEP COVE GROS MORNE
NATIONAL PARK, NL

TYPICAL SECTIONS MISCELLANEOUS DETAILS

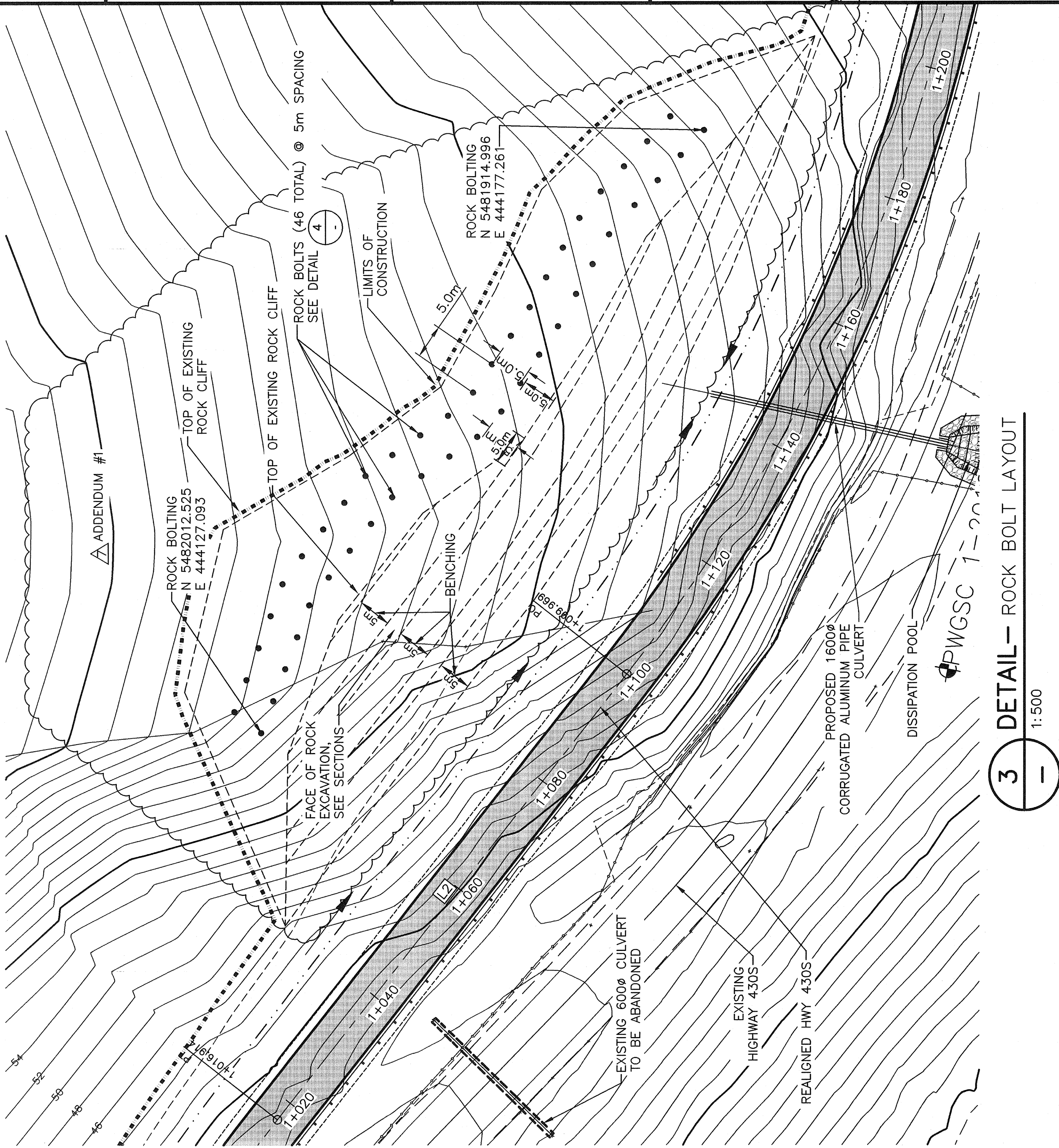
designed	P.F.	conqu
date	AUGUST 2013	
drawn	J.P.R.	dessiné

approved	approved
date	date
FEBRUARY 2014	FEBRUARY 2014
approved	approved

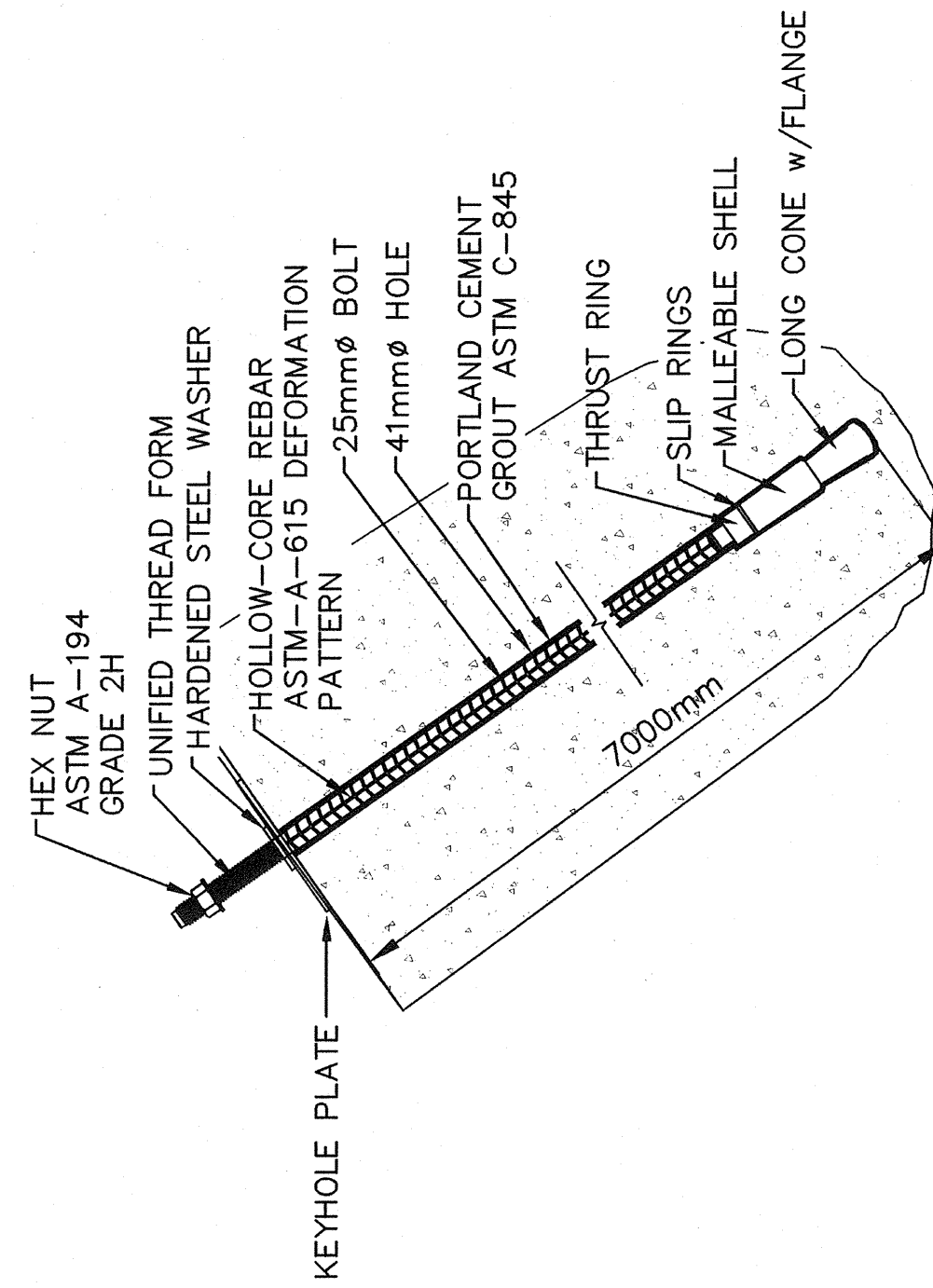
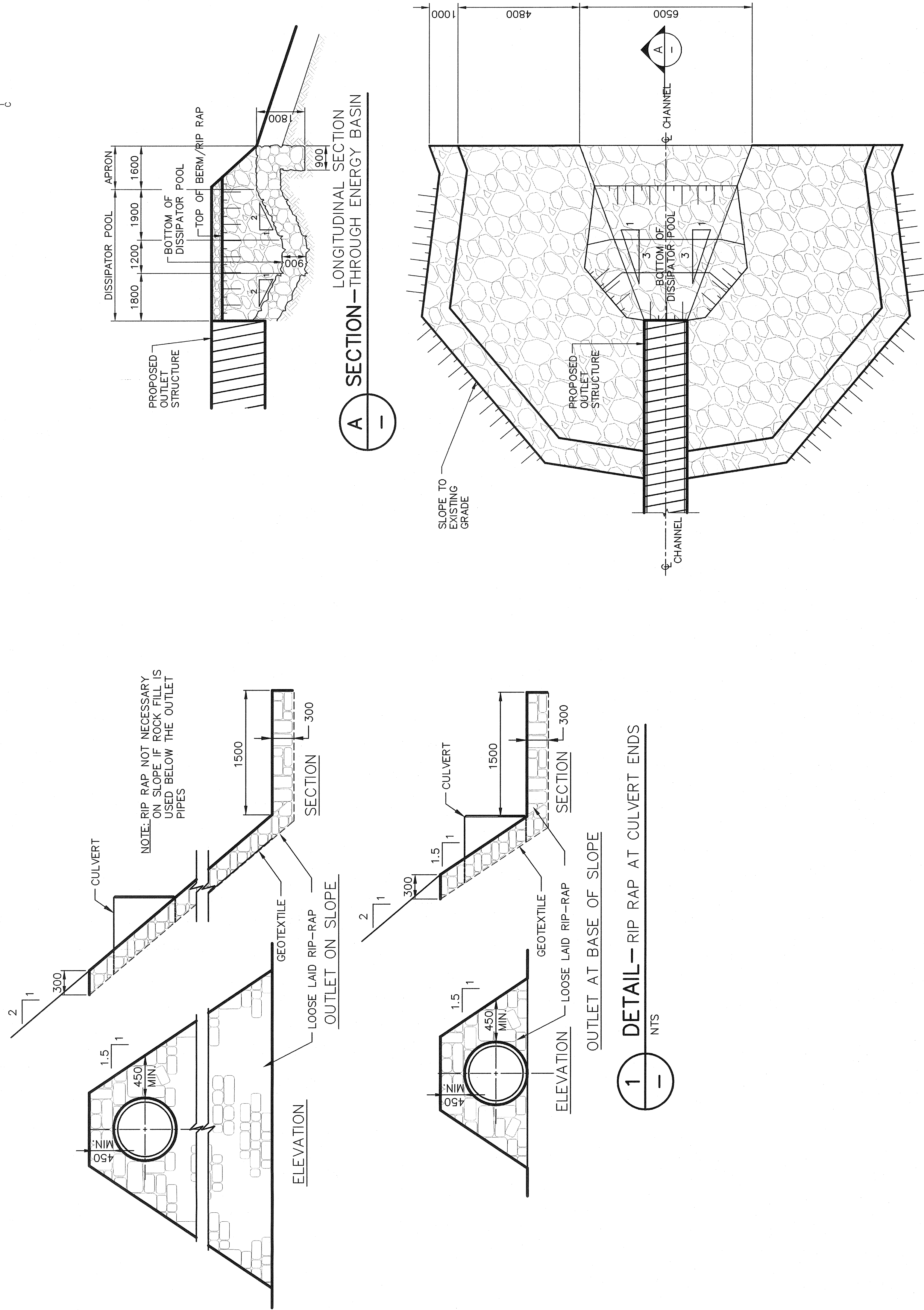
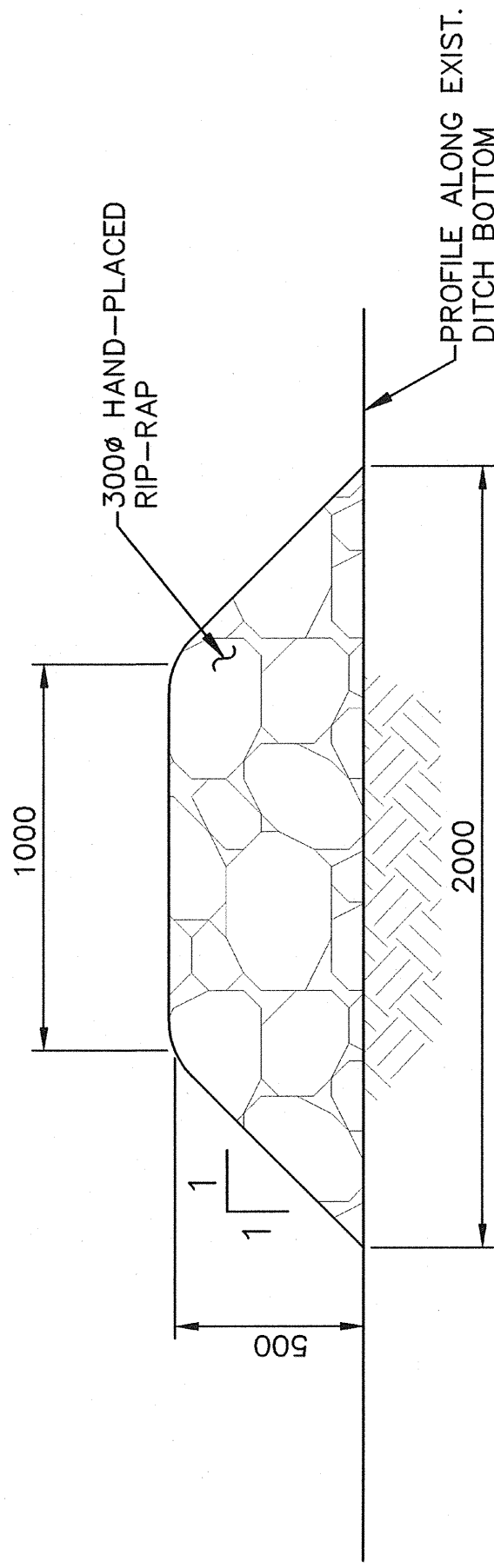
Teacher	<i>E. M. Owen</i>	Submission
FWGSC Project Manager	<i>A. Maynard</i>	no. du projet
project number		

drawing no.	no. du dessin
C-06	

E-DRM/GDD-E: 469979



SUPERELEVATION DATA			
STATION	LEFT LANE	RIGHT LANE	
BEGIN TRANSITION C1			
0+778.03	-2.0%		-2.0%
0+792.36	0.0%		-2.0%
0+805.69	-2.0%		-2.0%
0+835.36	6.0%		-6.0%
FULL SUPERELEVATION			
TRANSITION TO C2			
1+002.58	6.0%		-6.0%
1+031.25	2.0%		-2.0%
1+045.58	0.0%		-2.0%
1+068.45	-2.0%		-2.0%
1+071.31	-2.0%		0.0%
1+085.63	-2.0%		2.0%
1+114.30	-6.0%		6.0%
FULL SUPERELEVATION			
END TRANSITION C2			
1+348.69	-6.0%		6.0%
1+377.66	-2.0%		2.0%
1+381.99	-2.0%		0.0%
1+406.32	-2.0%		-2.0%



NOTES: 1. ROCK BOLTS TO BE INSTALLED PRIOR TO ROCK BLASTING
2. ROCKS BOLTS TO BE INSTALLED AT A DIP ANGLE OF 45 DEGREES
AND A STRIKE ANGLE OF 045 DEGREES

GENERAL NOTES:

1. FOR GENERAL NOTES SEE DRAWING C01