

RETURN BIDS TO:
RETOURNER LES SOUMISSIONS À:
Bid Receiving - PWGSC / Réception des soumissions
- TPSGC
11 Laurier St./11 rue Laurier
Place du Portage, Phase III
Core 0A1 / Noyau 0A1
Gatineau, Québec K1A 0S5

SOLICITATION AMENDMENT MODIFICATION DE L'INVITATION

The referenced document is hereby revised; unless otherwise indicated, all other terms and conditions of the Solicitation remain the same.

Ce document est par la présente révisé; sauf indication contraire, les modalités de l'invitation demeurent les mêmes.

Comments - Commentaires
CE DOCUMENT COMPORTE DES EXIGENCE
RELATIVES À LA SÉCURITÉ/ THIS
DOCUMENT CONTAINS A SECURITY
REQUIREMENT

Vendor/Firm Name and Address
Raison sociale et adresse du
fournisseur/de l'entrepreneur

Issuing Office - Bureau de distribution
Construction Services Division/Division des services de
construction
11 Laurier St./11 Rue Laurier
3C2, Place du Portage
Phase III
Gatineau, Québec K1A 0S5

Title - Sujet East Pavil Rehab/Réhab de pavil est	
Solicitation No. - N° de l'invitation EP748-142417/A	Amendment No. - N° modif. 001
Client Reference No. - N° de référence du client 20142417	Date 2014-06-16
GETS Reference No. - N° de référence de SEAG PW-\$\$\$FG-340-65223	
File No. - N° de dossier fg340.EP748-142417	CCC No./N° CCC - FMS No./N° VME
Solicitation Closes - L'invitation prend fin at - à 02:00 PM on - le 2014-07-03	Time Zone Fuseau horaire Eastern Daylight Saving Time EDT
F.O.B. - F.A.B. Plant-Usine: <input type="checkbox"/> Destination: <input checked="" type="checkbox"/> Other-Autre: <input type="checkbox"/>	
Address Enquiries to: - Adresser toutes questions à: Brouillet, Richard	Buyer Id - Id de l'acheteur fg340
Telephone No. - N° de téléphone (819) 956-0457 ()	FAX No. - N° de FAX (819) 956-8335
Destination - of Goods, Services, and Construction: Destination - des biens, services et construction: DEPARTMENT OF PUBLIC WORKS AND GOVERNMENT SERVICES CANADA CENTRE BLOCK 111 WELLINGTON STREET OTTAWA, ON K1A 0A9	

Instructions: See Herein

Instructions: Voir aux présentes

Delivery Required - Livraison exigée	Delivery Offered - Livraison proposée
Vendor/Firm Name and Address Raison sociale et adresse du fournisseur/de l'entrepreneur	
Telephone No. - N° de téléphone Facsimile No. - N° de télécopieur	
Name and title of person authorized to sign on behalf of Vendor/Firm (type or print) Nom et titre de la personne autorisée à signer au nom du fournisseur/ de l'entrepreneur (taper ou écrire en caractères d'imprimerie)	
Signature	Date

Solicitation No. - N° de l'invitation

EP748-142417/A

Amd. No. - N° de la modif.

001

Buyer ID - Id de l'acheteur

fg340

Client Ref. No. - N° de réf. du client

20142417

File No. - N° du dossier

fg340EP748-142417

CCC No./N° CCC - FMS No/ N° VME

AMENDMENT 1 IS RAISED TO ATTACH ADDENDUM 1

CLAUSES AND CONDITIONS REMAIN THE SAME

ADDENDUM NO.: 001

PROJECT NO.: R.027594.018

The following changes in the bid documents are effective immediately. This addendum will form part of the contract documents.

DRAWINGS

1. Drawings: **ALL** Title block. Refer to ASK-001 for modifications.
 1. **DELETE:** 1 Wellington
REPLACE WITH: 111 Wellington
2. Drawing: **A-001** Gen. Architectural – Index & Glossary.
 1. Refer to ASK-002 for modifications.
3. Drawing: **A-304** Window Interventions – Types FF, J, R & Details
 1. Refer to ASK-003 for modifications.

SPECIFICATIONS

1. Section 01 14 00 – Work Restrictions
 1. Refer to paragraph 1.02.9.1
 - **DELETE:** The Light and Sound event: daily from July 5 through to the first Monday of September, from 20:30 to 23:00 hours.
 - **REPLACE WITH:** The Light and Sound event: daily from July 5 through to the first Sunday of September, from 19:00 to 23:00 hours.
2. Section 04 03 08 – Historic Mortaring
 1. Refer to paragraph 1.04.5.5
 - **DELETE:** Compressive Strength of hydraulic lime mortar at 28 and 90 days prior to commencing work, or as directed by Departmental Representative.
 - **REPLACE WITH:** Compressive Strength of all mortar types at 28 and 90 days prior to commencing work, or as directed by Departmental Representative.
 2. Refer to paragraph 1.06.
 - **INSERT:** DEFINITIONS

3. Refer to paragraph 1.06.1
 - **INSERT:** Bedding mortar: mortar used beyond a depth of 40mm for Nepean or 30mm for Berea and Wallace stone when relaying stone.
4. Refer to paragraph 1.06.2
 - **INSERT:** Back pointing mortar: mortar used beyond a depth of 40mm for Nepean or 30mm for Berea and Wallace stone when the stone are NOT being re-laid.
5. Refer to paragraph 1.06.3
 - **INSERT:** Pointing mortar: mortar applied at the face of stones up to a depth of 40mm for Nepean or 30mm for Berea and Wallace stone.
6. Refer to paragraph 2.02.3.2
 - **DELETE:** Back Pointing Mortar at string course 5 and above: one part hydraulic lime and two and one half parts sand - (1:2.5). Add air entrainment.
 - **REPLACE WITH:** At turrets only: Bedding and back Pointing Mortar one part hydraulic lime and two and one half parts sand - (1:2.5). Add air entrainment.
7. Refer to paragraph 2.02.3.3
 - **DELETE:** Bedding and Back Pointing Mortar below string course 5: one part Portland cement, two and a half parts lime and eight parts sand (1:2.5.8).
 - **REPLACE WITH:** Everywhere except at turrets: Bedding and Back Pointing Mortar one part Portland cement, two and a half parts lime and eight parts sand (1:2.5.8).
8. Refer to paragraph 2.02.3.4
 - **INSERT:** In areas where consolidation will be done to a depth greater than one (1) wythe of brick: Bedding mortar one part Portland cement one part lime, six parts sand (1:1:6)
9. Refer to paragraph 2.02.4
 - **DELETE:** Mortar: The composition and proportions for the historic mortar may be changed as directed by the Departmental Representative based on the results of testing currently underway by the National Research Council.
 - **REPLACE WITH:** Mortar: The composition and proportions for the historic mortar may be changed as directed by the Departmental Representative.

3. Section 04 21 13 – Brick Masonry

1. Refer to paragraph 2.01.1.3
 - **DELETE:** Compressive strength: 17MPa minimum.
 - **REPLACE WITH:** Compressive strength 60MPa minimum.

4. Section 32 12 16 – Asphalt Paving

1. Refer to paragraph 1.6.2
 - **DELETE:** Inform the Departmental Representative of proposed source of aggregates and provide access for sampling at least 4 weeks prior to beginning Work.
 - **REPLACE WITH:** Inform the Departmental Representative of proposed source of aggregates and provide gradation curves at least 4 weeks prior to beginning Work.

2. Refer to paragraph 1.7.5
 - **DELETE:** Submit to the Departmental Representative copies of freight and waybills for asphalt cement as shipments are received. The Departmental Representative reserves the right to check weights as material is received.
 - **REPLACE WITH:** The Departmental Representative reserves the right to check weights as material is received.

3. Refer to paragraph 1.7.7
 - **DELETE:** Protect stockpiles of crushed RAP from rain to approval of the Departmental Representative.
 - **REPLACE WITH:** Protect stockpiles of crushed RAP from rain.

4. Refer to paragraph 1.8.4
 - **DELETE:** Divert unused aggregate materials from landfill to quarry or facility for reuse as approved by the Departmental Representative.
 - **REPLACE WITH:** Divert unused aggregate materials from landfill to quarry or facility for reuse.

5. **DELETE** paragraph 2.1.12 entirely

6. Refer to paragraph 2.2.5.2
 - **DELETE:** Tamping irons having mass not less than 12 kg and bearing area not exceeding 310 cm² for compacting material along curbs, gutters and other structures inaccessible to roller. Mechanical compaction equipment, when approved by the Departmental Representative, may be used instead of tamping irons.
 - **REPLACE WITH:** Tamping irons having mass not less than 12 kg and bearing area not exceeding 310 cm² for compacting material along curbs, gutters and other structures inaccessible to roller. Mechanical compaction equipment may be used instead of tamping irons.

7. **DELETE** paragraph 2.2.6 entirely

8. Refer to paragraph 2.3.1
 - **DELETE:** Mix design for Superpave 12.5 and Superpave 19.0 to be approved by the Departmental Representative, in accordance with Division 01.
 - **REPLACE WITH:** Mix design for Superpave 12.5 and Superpave 19.0 in accordance with Division 01.

9. Refer to paragraph 2.3.2
 - **DELETE:** Mix design to be developed by testing laboratory approved by the Departmental Representative.
 - **REPLACE WITH:** Mix design to be developed by testing laboratory.

10. Refer to paragraph 2.3.3
 - **DELETE:** Mix to contain maximum 50% by mass of RAP The Departmental Representative may approve higher proportion of RAP if Contractor demonstrates ability to produce mix meeting requirements of specification.
 - **REPLACE WITH:** Mix to contain maximum 50% by mass of RAP

11. **DELETE** paragraph 2.3.4.5 entirely

12. Refer to paragraph 3.2.1.5

- **DELETE:** Before mixing, dry aggregates to moisture content not greater than 1 % by mass or to lesser moisture content if required to meet mix design requirements. (Heat to temperature required to meet mixing temperature as directed by the Departmental Representative after combining with RAP).
- **REPLACE WITH:** Before mixing, dry aggregates to moisture content not greater than 1 % by mass or to lesser moisture content if required to meet mix design requirements. (Heat to temperature required to meet mixing temperature after combining with RAP).

13. Refer to paragraph 3.2.1.8

- **DELETE:** Heat asphalt cement and aggregate to mixing temperature directed by the Departmental Representative. Do not heat asphalt cement above 160 degrees C (maximum temperature indicated on temperature-viscosity chart).
- **REPLACE WITH:** Do not heat asphalt cement above 160 degrees C (maximum temperature indicated on temperature viscosity chart).

14. **DELETE** paragraph 3.2.1.9 entirely

15. Refer to paragraph 3.2.1.11.1

- **DELETE:** In batch plants, both dry and wet mixing times as directed by the Departmental Representative. Continue wet mixing as long as necessary to obtain thoroughly blended mix but not less than 30s or more than 75s.
- **REPLACE WITH:** In batch plants, continue wet mixing as long as necessary to obtain thoroughly blended mix but not less than 30s or more than 75s.

16. Refer to paragraph 3.2.1.11.2

- **DELETE:** In continuous mixing plants, mixing time as directed by the Departmental Representative but not less than 45s.
- **REPLACE WITH:** In continuous mixing plants, mixing time not less than 45s.

17. Refer to paragraph 3.2.1.11.3

- **DELETE:** Do not alter mixing time unless directed by the Departmental Representative.
- **REPLACE WITH:** Do not alter mixing time.

18. Refer to paragraph 3.2.1.12.3

- **DELETE:** Combine RAP and new aggregates in proportions as directed by the Departmental Representative. Dry mix thoroughly, until uniform temperature within plus or minus 5 degrees C of mix temperature, as directed by the Departmental Representative, is achieved prior to adding new asphalt cement. Do not add new asphalt cement where temperature of dried mix material is above 160 degrees C.
- **REPLACE WITH:** Combine RAP and new aggregates in proportions as specified. Dry mix thoroughly, until uniform temperature within plus or minus 5 degrees C of mix temperature is achieved prior to adding new asphalt cement. Do not add new asphalt cement where temperature of dried mix material is above 160 degrees C.

19. Refer to paragraph 3.5.6

- **DELETE:** Deliver loads continuously in covered vehicles and immediately spread and compact. Deliver and place mixes at temperature within range as directed by the Departmental Representative, but not less than 135 degrees C.
- **REPLACE WITH:** Deliver loads continuously in covered vehicles and immediately spread and compact. Deliver and place mixes at temperature not less than 135 degrees C.

20. Refer to paragraph 3.6.1

- **DELETE:** Construct and test test strip to approval of the Departmental Representative.
- **REPLACE WITH:** Construct and test test strip to approval of the Departmental Representative, if required.

21. **DELETE** paragraph 3.6.3 entirely

22. Refer to paragraph 3.7.7.1

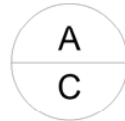
- **DELETE:** Construct longitudinal joints and edges true to line markings. The Departmental Representative to establish lines for paver to follow parallel to centerline of proposed pavement. Position and operate paver to follow established line closely.

- **REPLACE WITH:** Construct longitudinal joints and edges true to line markings. Establish lines for paver to follow parallel to centerline of proposed pavement. Position and operate paver to follow established line closely.

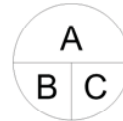
23. Refer to paragraph 3.8.7.1

- **DELETE:** Accomplish finish rolling with two axle or three axle tandem steel wheeled rollers while material is still warm enough for removal of roller marks. If necessary to obtain desired surface finish, use pneumatic-tired rollers as directed by the Departmental Representative.
- **REPLACE WITH:** Accomplish finish rolling with two axle or three axle tandem steel wheeled rollers while material is still warm enough for removal of roller marks. If necessary to obtain desired surface finish, use pneumatic-tired rollers.

03	99% CONSTRUCTION DOCUMENTS	29 NOV 2013
02	66% CONSTRUCTION DOCUMENTS	12 SEPT 2013
01	33% CONSTRUCTION DOCUMENTS	30 JUL 2013
Revision		Date



A detail no. / no. du détail
B location drawing no. /
no. de localisation
C drawing no. / no. du dessin



Project

Projet

Centre Block East Pavilion Rehabilitation Project

111 Wellington St. Ottawa, Ontario K1A 06A

Édifice du Centre Projet de réhabilitation Pavillon de l'est

111, rue Wellington Ottawa, Ontario K1A 06A

PWGSC Project no. TPSGC No du projet
R.027594.018

Tender M. Valentiate Soumission

Project Manager Administrateur de projet

Drawing Dessin

1 TITLE BLOCK
ASK-001 1:1

CLIENT/PROJET

CENTRE BLOCK

East Pavilion Rehabilitation Project

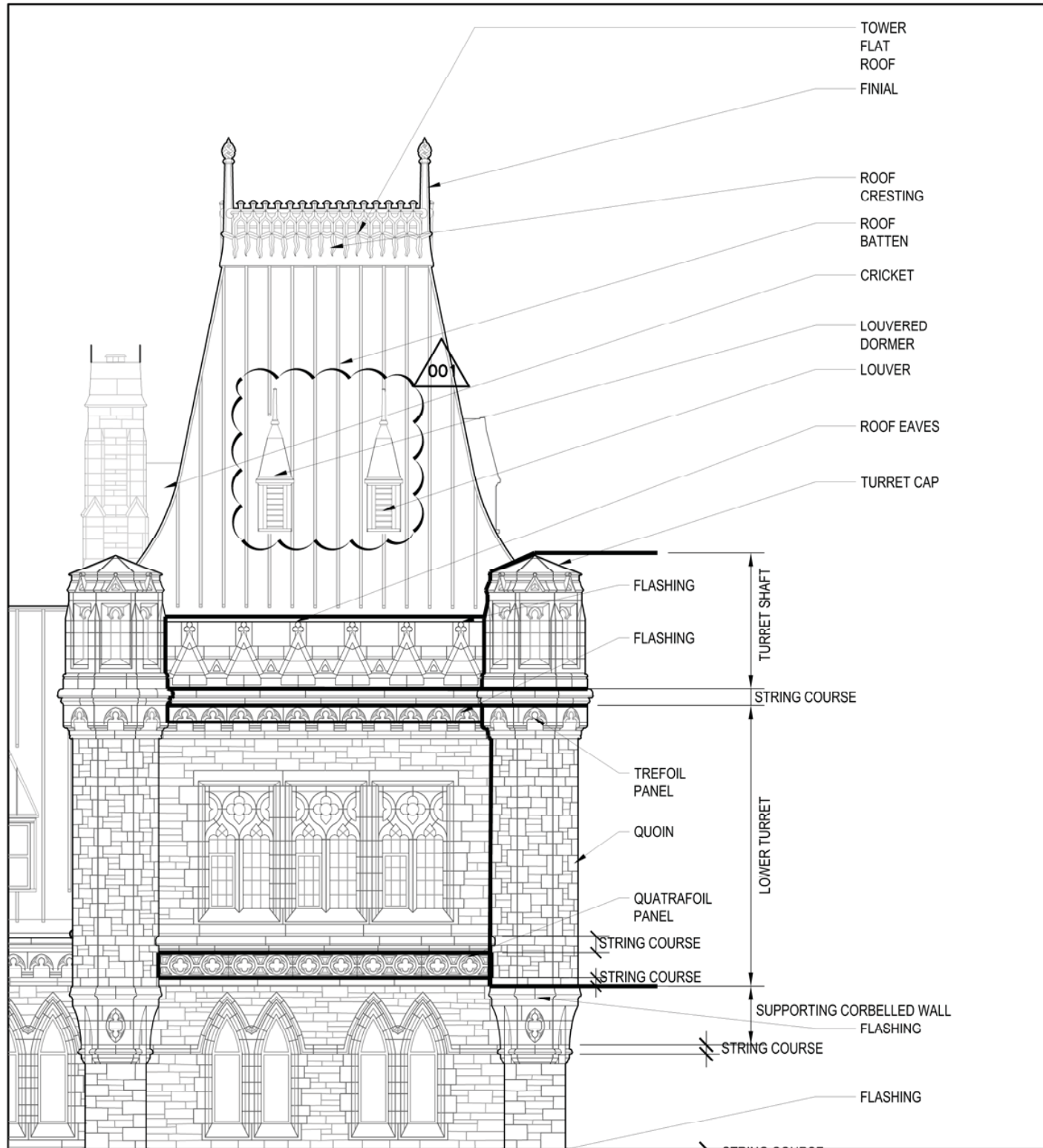
Extract from: ALL

Date: 2014/05/21

Scale: 1:1

R.027954.018 ASK

001



1 INDEX DRAWING
ASK-002 1:100

**FURNIER
GERS VITZ
MOSS
DROLET**
ARCHITECTES

1435 RUE SAINT-ALEXANDRE, BUREAU 1000, MONTRÉAL (QC) H3A 2G4
TÉLÉPHONE: (514) 293-9409 TÉLÉCOPIEUR: (514) 293-9408
info@fgmda.com

© Fournier Gersovitz Moss Drolet et associés architectes, 2014

CLIENT/PROJET

CENTRE BLOCK

East Pavilion Rehabilitation Project

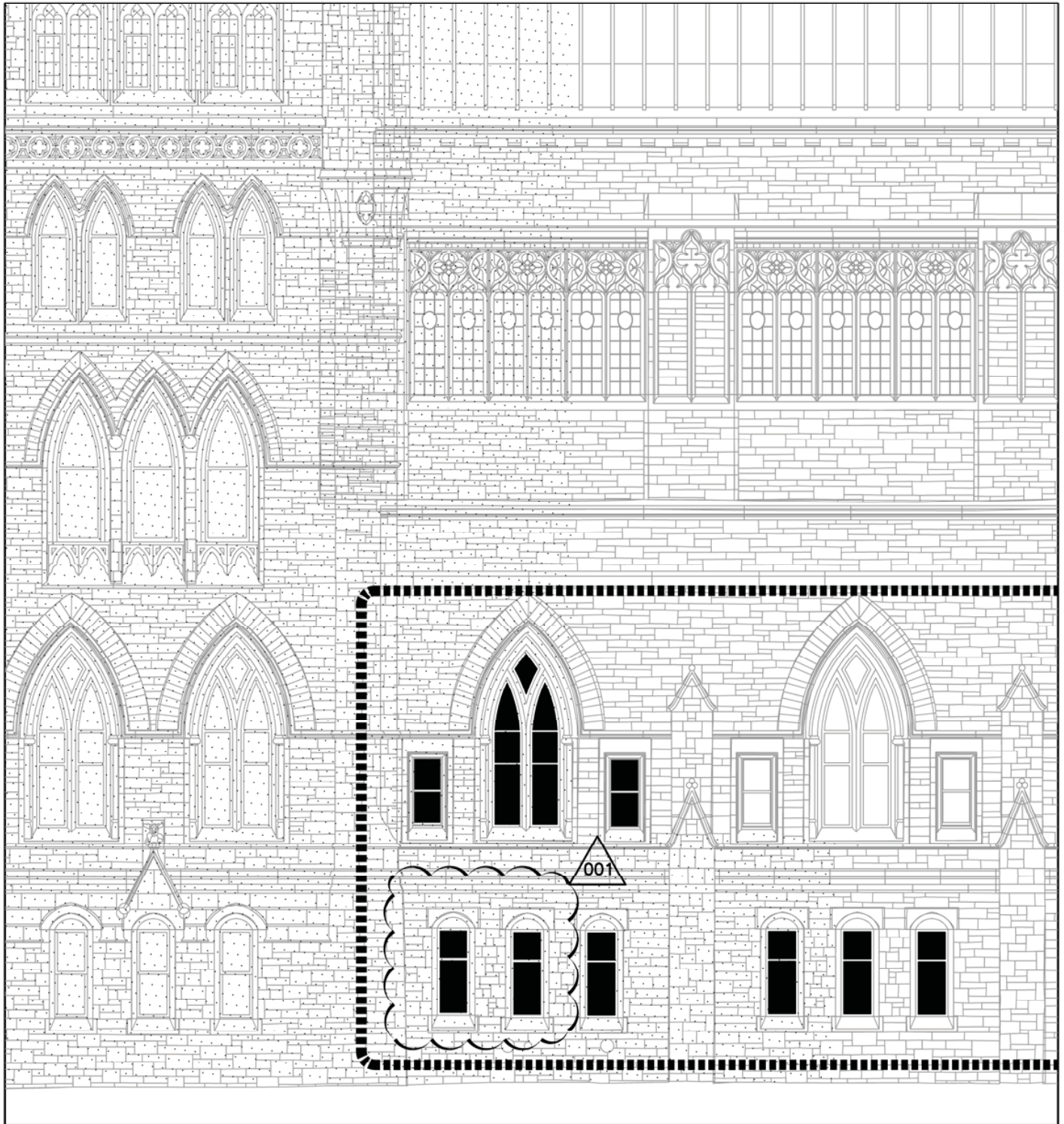
Extrait de: A-001

Date: 2014/05/21

Scale: 1:100

R.027954.018 ASK

002



1 LOCATIONS OF PRIVACY FILM OUTSIDE OF SCAFFOLDING
ASK-003 1:100

**FURNIER
GERS
MILTZ
DR
ARCHITECTES**

1425 RUE SAINT-ALEXANDRE, BUREAU 1000, MONTRÉAL (QC) H3A 2G4
TEL ÉPHEMÈRE (514) 383-0490 TEL ÉCOPREUR (514) 383-0490
info@fmda.com

© Fournier Gervais Moss Drolet et associés architectes, 2014

CLIENT/PROJET

CENTRE BLOCK

East Pavilion Rehabilitation Project

Extract from: 6/A-304

Date: 2014/05/21

Scale: 1:100

R.027954.018 ASK

003