

AIR COOLED CHILLER														
EQUIPMENT	NOMINAL COOLING CAPACITY (TONS)	LOCATION	MANUFACTURER	MODEL	CHW FLOW L/S (GPM)	EVAP. PRESS. DROP m H2O (FT)	MIN. EVAP. FLOW L/S (GPM)	LWT/EWT (°C)	AMBIENT AIR TEMP (°C)	CAPACITY (TONS)	ELECTRICAL		EFFICIENCY	REMARKS
											MCA	V/PH/F		
CH-1	170	PARKING	-	-	29 (460)	3.33 (10.9)	15.2 (241)	10 / 15.5	35	191.1	271	575/3/60	11.1 EER	HIGH EFFICIENCY CHILLER

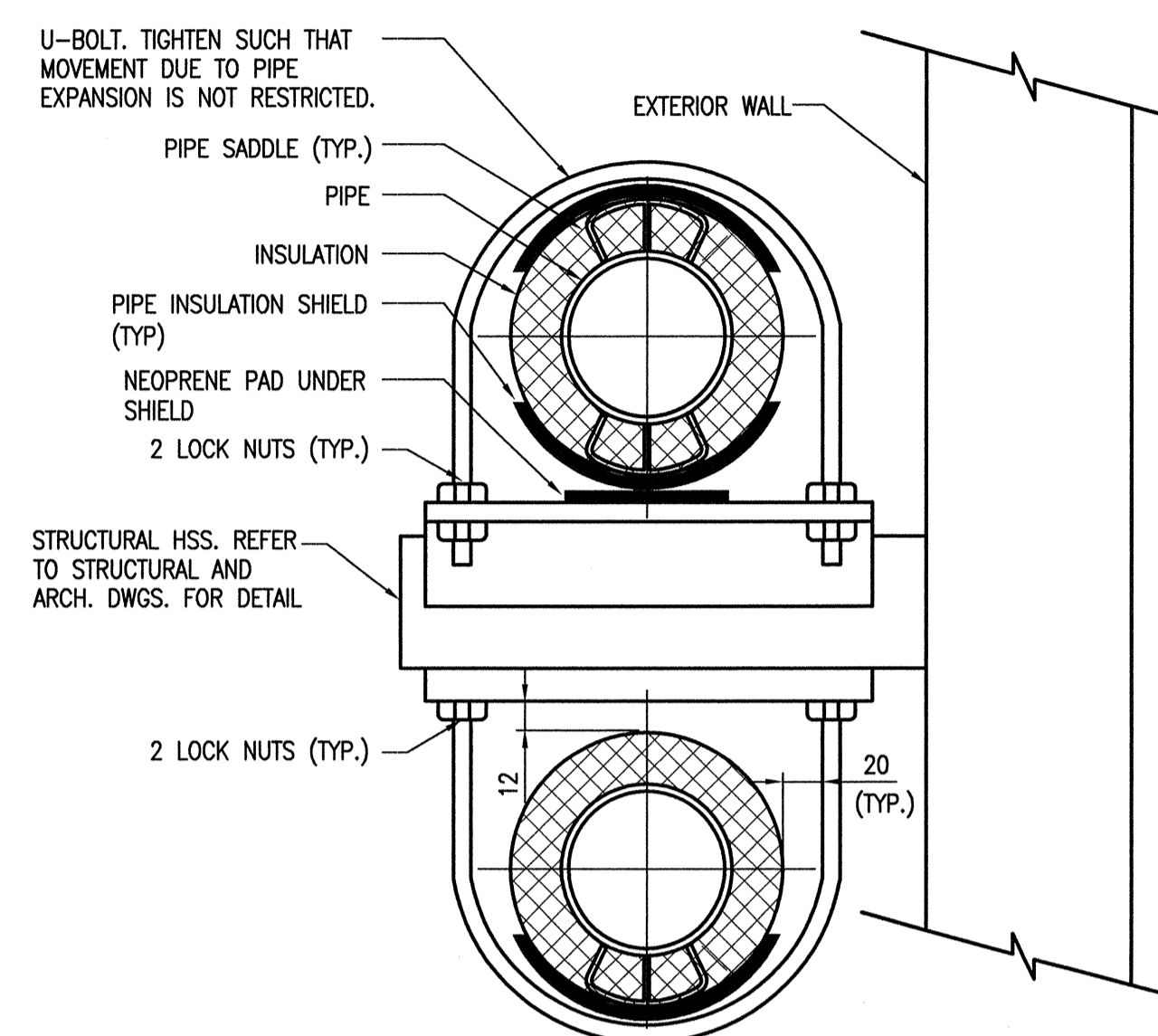
CH-1 PART LOAD PERFORMANCE AT AHRI STANDARD CONDITIONS				
P#	% LOAD REQUEST	CAPACITY (TONS)	TOTAL UNIT INPUT POWER (KW)	PERFORMANCE (EER)
1	100	171.3	195.4	10.5
2	75	128.5	118.5	13
3	50	85.7	64.6	15.9
4	25	42.8	35.4	14.5

- NOTES FOR CHILLER:**
1. COMPREHENSIVE FACTORY SOUND TREATMENT
 2. EVAPORATOR BARREL HEAT TRACING
 3. FLOW SWITCH
 4. STARTER AND DISCONNECT SWITCH
 5. LOW AMBIENT KIT (DOWN TO -17.8C)
 6. BACnet

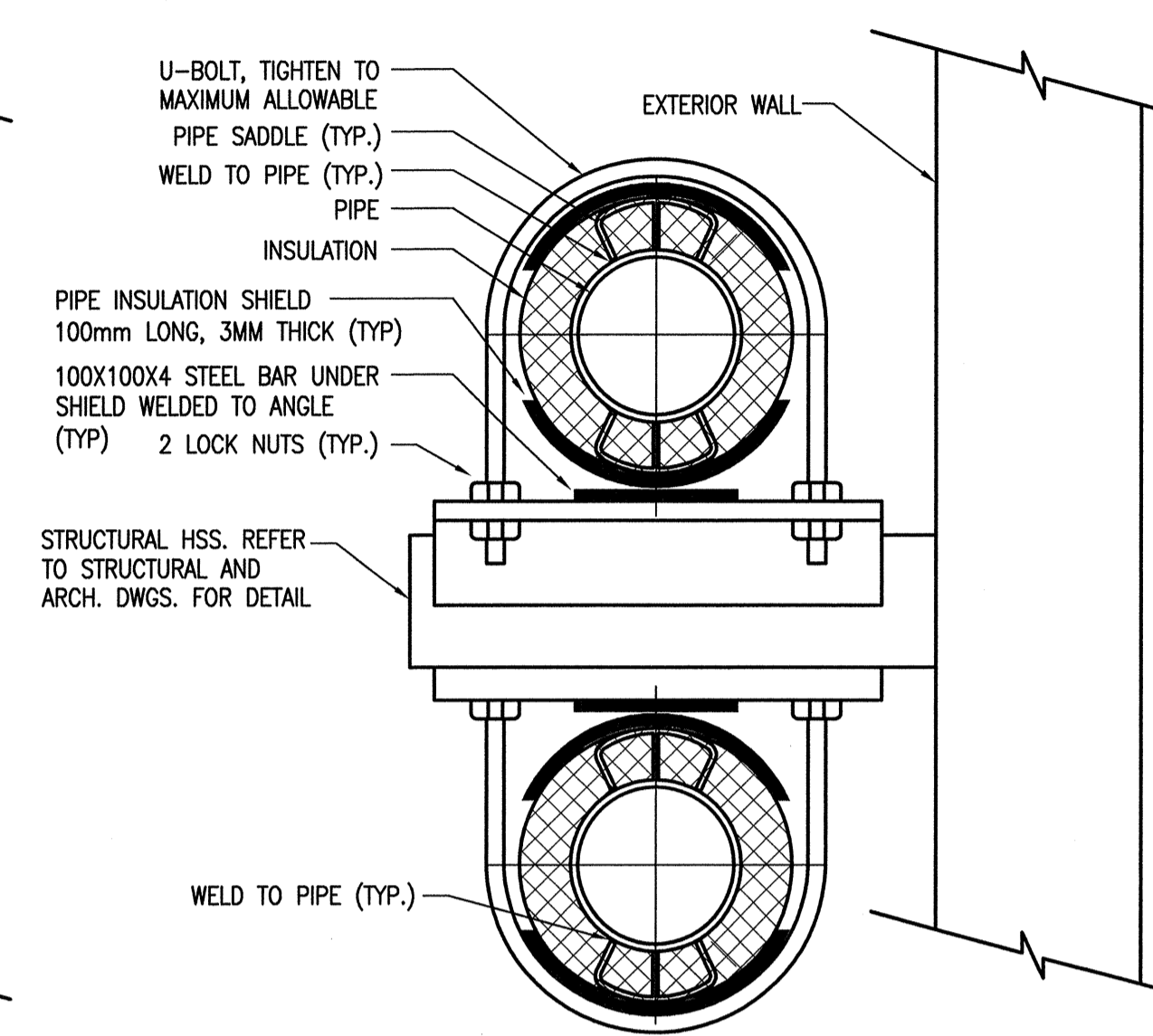
EXPANSION TANKS									
EQUIPMENT	LOCATION	SERVICE	MANUFACTURER	MODEL #	TYPE	TANK VOLUME (L)	MAX. OPERATING PRESSURE (kPa)	INSTALLATION ORIENTATION	ACCESSORIES
ET-1A	MECH MEZZ. RM.	MAIN HEADER	-	-	VERTICAL	170	862	VERTICAL	PRECHARGED ASME TANK

AIR SEPARATORS							
EQUIPMENT	LOCATION	SERVICE	MANUFACTURER	MODEL #	FLOW RATE (l/s)	MAX. PRESSURE DROP (kPa)	COMMENTS
AS-1	MECH MEZZ.	CHILLER	-	-	37.8	4.5	150# CONNECTIONS

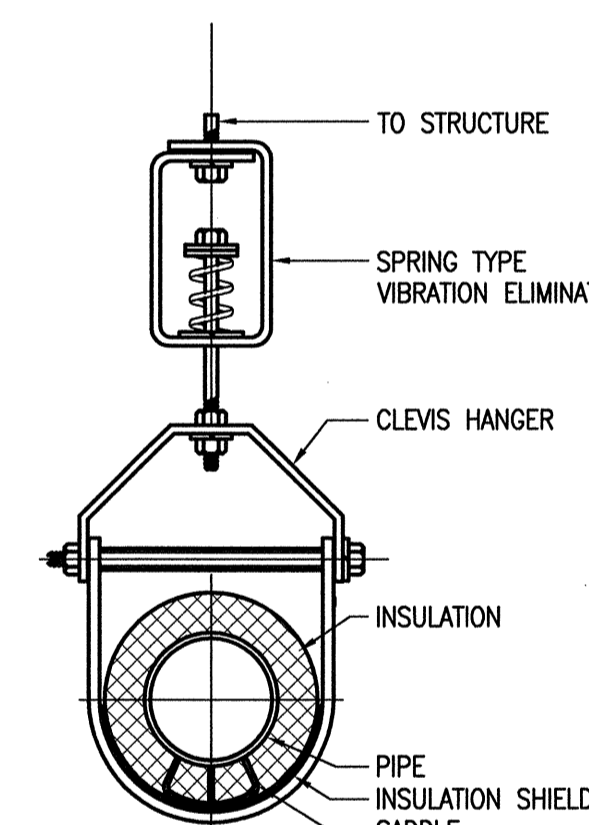
PUMPS													
EQUIPMENT	LOCATION	SERVICE	FLOW RATE L/S (GPM)	TOTAL HEAD (M OF WATER)	MANUFACTURER	PUMP SERIES	HP	RPM	EFFICIENCY	TYPE	ELECTRICAL	MODEL	REMARKS
CHW-P3A	MECH ROOM	CHW PRIMARY LOOP	29 (460)	13.42	-	-	10	1760	76%	VERTICAL INLINE	575/3/60	4X4X8	C/W VFD. ONE AS STAND-BY
CHW-P3B	MECH ROOM	CHW PRIMARY LOOP	29 (460)	13.42	-	-	10	1760	76%	VERTICAL INLINE	575/3/60	4X4X8	C/W VFD. ONE AS STAND-BY



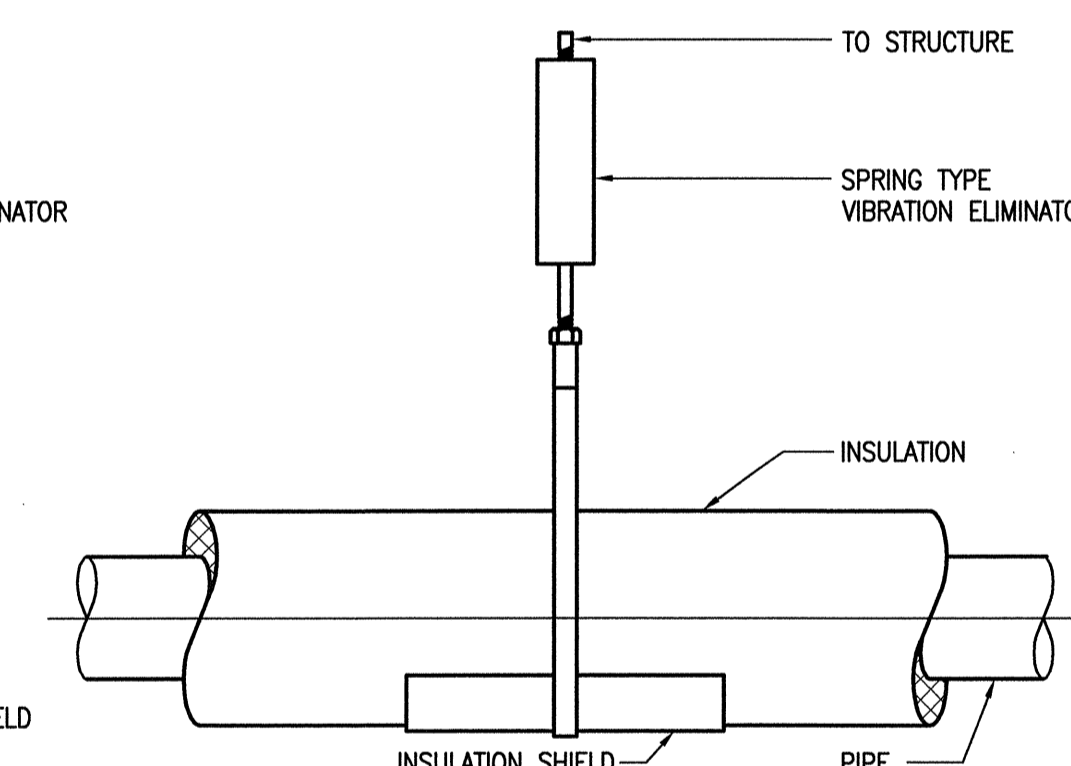
1 - N.T.S. **DETAIL OUTDOOR INSTALLATION PIPE GUIDE**



2 - N.T.S. **DETAIL OUTDOOR INSTALLATION PIPE ANCHOR**

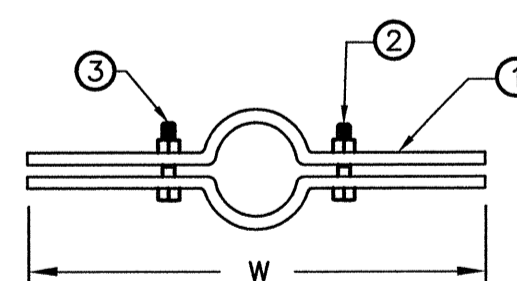


3 - N.T.S. **DETAIL HANGERS FOR PIPES IN MECH. RM.**



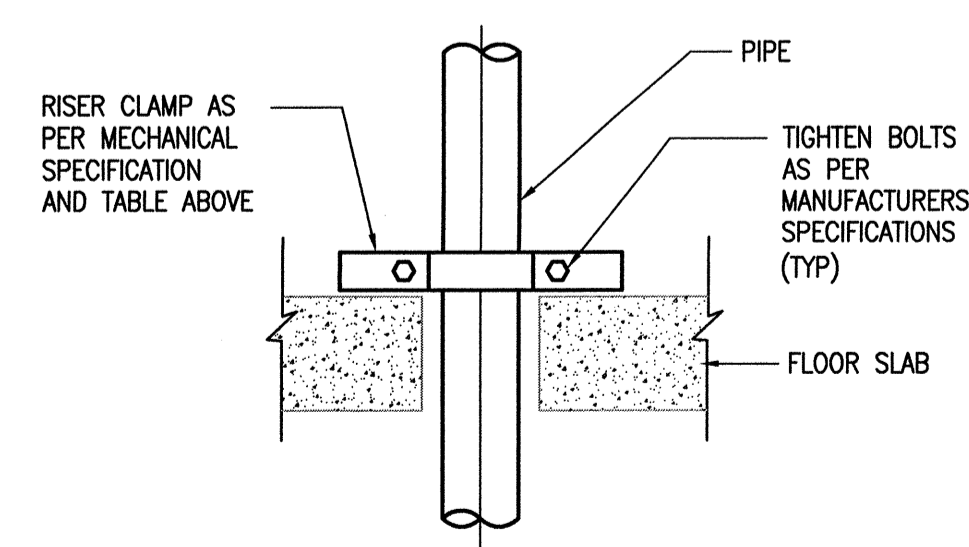
COMPONENTS:

1. PIPE CLAMP (2 PIECES)
2. SQUARE HEAD BOLT
3. HEX NUT

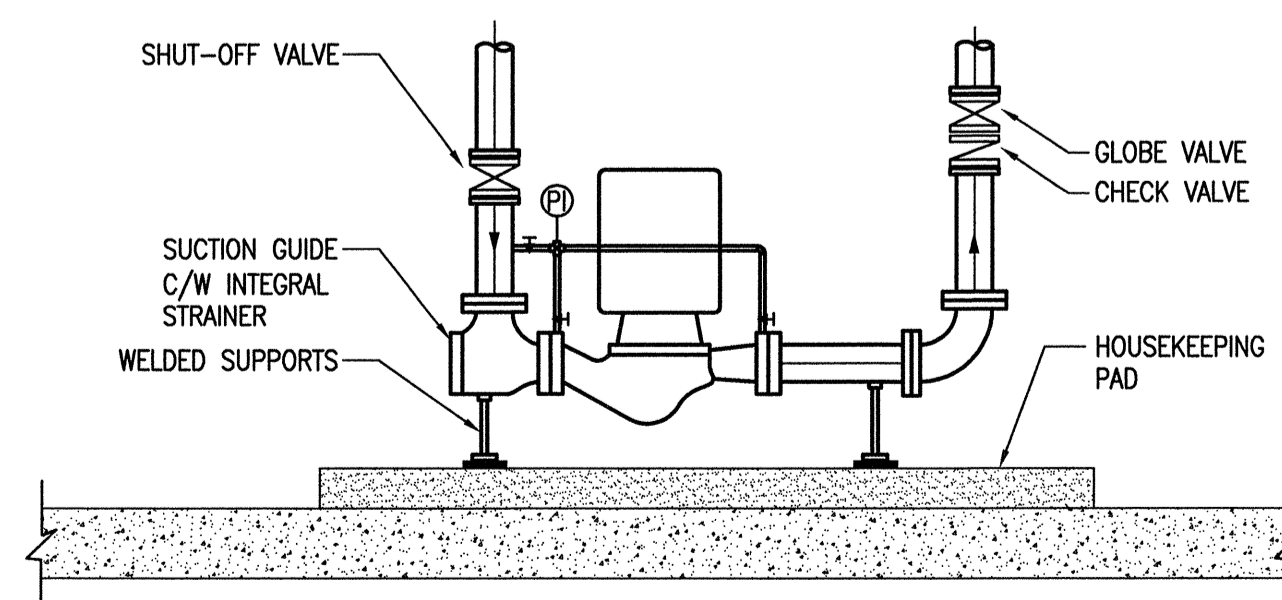


DESIGN DATA FOR RISER CLAMPS

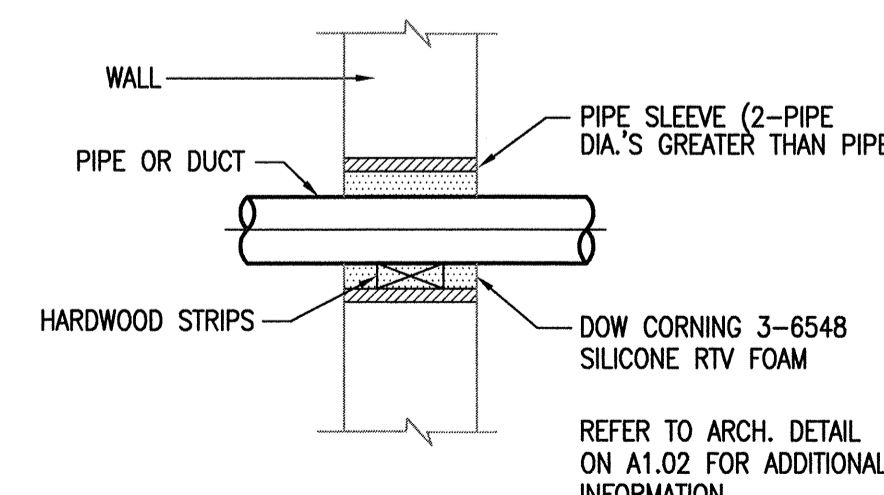
NOMINAL PIPE SIZE	W DIMENSION INCHES	STEEL SIZE INCHES		BOLT SIZE INCHES	
		INCHES	INCHES	INCHES	INCHES
2 1/2	11 1/4	1/4" x 1-1/4"	3/8" x 1-1/2"	3/8" x 1-1/2"	3/8" x 1-1/2"
3	12	1/4" x 1-1/4"	3/8" x 1-1/2"	3/8" x 1-1/2"	3/8" x 1-1/2"
4	13 1/2	1/4" x 1-1/2"	1/2" x 1-1/2"	1/2" x 1-1/2"	1/2" x 1-1/2"
5	14 1/2	1/4" x 2"	1/2" x 1-1/2"	1/2" x 1-1/2"	1/2" x 1-1/2"
6	15 1/2	1/4" x 2"	1/2" x 1-1/2"	1/2" x 1-1/2"	1/2" x 1-1/2"
8	18 1/2	3/8" x 2"	5/8" x 2-1/2"	5/8" x 2-1/2"	5/8" x 2-1/2"



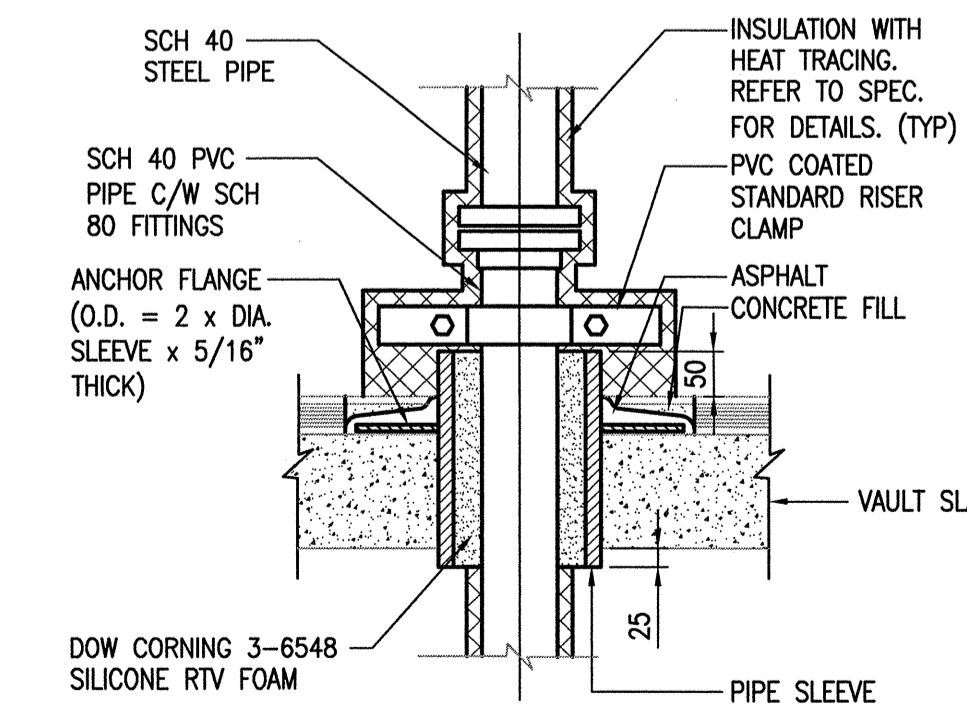
4 - N.T.S. **DETAIL PIPE SUPPORT FOR UNRATED FLOOR**



5 - N.T.S. **DETAIL TYPICAL PUMP CONNECTIONS**



6 - N.T.S. **DETAIL SLEEVE THROUGH WALL**



7 - N.T.S. **DETAIL PIPE SLEEVE THROUGH CONCRETE SLAB OF PIPE VAULT**

Revision/Description	Description/Description	Date/Date
C	ISSUED FOR TENDER	14/05/02
B	100% SUBMISSION	14/01/24
A	95% SUBMISSION	13/12/13

AGRICULTURE AND AGRI-FOODS CANADA

Project title/Titre du projet
PARC AGASSIZ AGASSIZ, B.C.

ATES SYSTEM REPLACEMENT

Approved by/Approuvé par
 NK
 Designed by/Concept par
 NK
 Drawn by/Dessiné par
 SA
 PWSC Project Manager/Administrateur de Projets TPSC
 T. DUNPHY
 PWSC, Architectural and Engineering Resources Manager/Ressources Architectural et de Directeur d'ingénierie, TPSC
 P. FUNG
 Client/client

Drawing title/Titre du dessin
SCHEDULES AND DETAILS

Project No./No. du projet
R.054815.001
 Sheet/Feuille
M5.1
 OF
 Revision no./La Révision no.
C