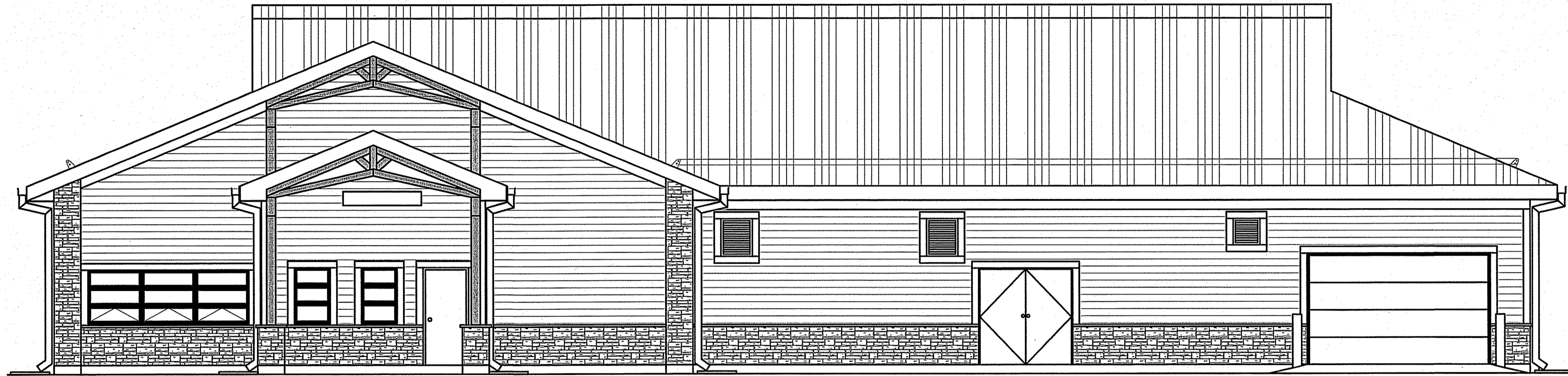


FACILITY BUILDING ISLAND LAKE MANITOBA



THIS DRAWING MUST NOT BE SCALED.
THE GENERAL CONTRACTOR SHALL VERIFY ALL DIMENSIONS, DETAILS AND LEVELS PRIOR TO COMMENCEMENT OF WORK AND IS HELD RESPONSIBLE FOR REPORTING ANY DISCREPANCY OR OMISSION TO CAN-TEC SERVICES LTD. IMMEDIATELY.
THIS DRAWING IS THE EXCLUSIVE PROPERTY OF CAN-TEC SERVICES LTD. AND CAN BE REPRODUCED ONLY WITH THE PERMISSION OF CAN-TEC SERVICES LTD. IN WHICH CASE THE REPRODUCTION MUST BEAR THEIR NAME AS THE ENGINEERING/DRAWING FIRM.
<http://www.can-tec.com>

Neil Cooper Architect Inc.
10-395 Berry Street, Winnipeg, Manitoba R3J 1N6
can tec
ENGINEERING AND DRAFTING
100 WATER STREET, WINNIPEG, MANITOBA
Tel: (204) 943-7222 Fax: (204) 941-9777

ISSUED FOR TENDER 14.06.10
ISSUED FOR 90% SUBMISSION 14.06.10
ISSUED FOR 65% REVIEW 14.06.10
ISSUED FOR 35% REVIEW 14.06.10
REV. # REVISION

SEALED BY:

DRAWING LIST

DRAWING LIST	
CIVIL	M2.1 CRAWL SPACE HVAC M2.2 MECHANICAL MEZZANINE HVAC M3.0 IN-FLOOR HEATING PLAN M5.0 SCHEMATICS
ARCHITECTURAL	
F1.0 MAIN FLOOR PLAN - FURNITURE	E1.1 SITE PLAN E2.1 LIGHTING - MAIN FLOOR E2.2 LIGHTING - CRAWL SPACE E2.3 LIGHTING POWER AND SYSTEMS, MECH. SPACE AND GARAGE, POWER AND SYSTEMS MAIN FLOOR
A0.0 TITLE PAGE	E3.1 SINGLE LINE DIAGRAM
A0.1 LANDSCAPE PLAN	E4.2 SCHEDULES
A0.2 MAIN FLOOR PLAN - CODE COMPLIANCE	
A0.3 MAIN FLOOR PLAN - DIMENSIONS	
A2.2 MAIN FLOOR PLAN - REFERENCES	
A2.3 CRAWL SPACE PLAN	
A2.4 MECHANICAL MEZZANINE AND ROOF PLAN	
A2.5 BLOW UP PLANS	
A2.6 BLOW UP PLANS	
A3.0 ELEVATIONS	
A3.1 ELEVATIONS	
A4.0 SECTIONS	
A4.1 SECTIONS	
A4.2 SECTION DETAILS	
A4.3 SECTION DETAILS	
A4.4 SECTION DETAILS	
A5.0 INTERIOR ELEVATIONS	
A5.1 INTERIOR ELEVATIONS	
A6.0 MAIN FLOOR - REFLECTED CEILING	
A6.1 CRAWL SPACE AND MECHANICAL MEZZANINE - REFLECTED CEILING	
A8.0 SCHEDULES	
A8.1 SCHEDULES	
AG2.0 GARAGE PLAN	
AG2.1 GARAGE DETAILS	
STRUCTURAL	
S1.0 GENERAL NOTES & TYP. DETAILS	
S2.1 FOUNDATION PLAN	
S2.2 MAIN FLOOR FRAMING PLAN	
S2.3 ROOF FRAMING PLAN	
S2.4 CELL CEILING & GARAGE PLANS	
S5.1 SECTIONS	
S5.2 SECTIONS	
S5.3 SECTIONS	
S6.1 GARAGE PLAN AND SECTIONS	
MECHANICAL	
M0.1 MECHANICAL SITE PLAN	
M1.0 MAIN FLOOR PLAN PLUMBING	
M1.1 CRAWL SPACE PLUMBING	
M1.2 PLUMBING DETAILS	
M2.0 MAIN FLOOR PLAN HVAC	

CONSULTANT LIST

PRIME CONSULTANT:
 ENGINEERING AND DRAFTING
10-395 BERRY STREET, WINNIPEG, MANITOBA R3J 1N6

ARCHITECT:
Neil Cooper Architect Inc.
10-395 Berry Street, Winnipeg, Manitoba R3J 1N6

STRUCTURAL ENGINEERING:
 Beach Rocke ENGINEERING LTD.
Professional Engineering Services
1050 St. Mary's Road, Winnipeg, Manitoba R2M 3S9
Telephone: (204) 255 7251 Fax: (204) 257 7239

MECHANICAL ENGINEERING:
 ENGINEERING AND DRAFTING
100 WATER STREET, WINNIPEG, MANITOBA R3J 1N6

ELECTRICAL ENGINEERING:
 Associated Engineering

CIVIL ENGINEERING:
 MEC CONSULTING
14 - 395 BERRY STREET
WINNIPEG, MANITOBA R3J 1N6
Tel: (204) 783-0757 Fax: (204) 774-3778
moneyseng@meconline.net

DRAWING SYMBOLS

1 - NUMBERED NOTE
◇ - WINDOW NUMBER
WF / RF - WALL / ROOF IDENTIFIER
D - DOOR NUMBER
X / AB# - DETAIL SECTION - SHEET SECTION LOCATED
X / AB# - ELEVATION IDENTIFIER - SHEET ELEVATION LOCATED
AB# - DETAIL MARKER (SEE SPECIFICATION BOOK VOLUME #3)

GRID LINES
#

DETAIL MARKER
/ AB#

ELEVATION MARKER
ELEVATION IDENTIFIER

ROOM NUMBER MARKER
##

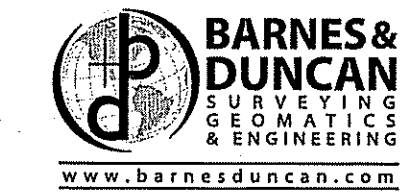
DETAIL IDENTIFICATION
X / AB# - DETAIL NUMBER
X / AB# - CURRENT SHEET
X / AB# - PAGE ORIENTATION

ABBREVIATION LIST

ACOUSTIC	ACST	DRYWALL	DW	LAVATORY	LAV	ROOM	RM
ADHESIVE	ADH	EACH	EA	LAY-IN ACOUSTIC TILE	LAT	ROUGH OPENING	RO
ADJUSTABLE	ADJ	EACH WAY	EW	LEFT HAND	LH	RUBBER	RB
AGGREGATE	AGGR	EAST	E	LEFT HAND REVERSE	LHR	RVT	RESILIENT SHEET FLOORING
AIR VAPOUR BARRIER	AVB	ELECTRICAL	ELEC	LENGTH	LG	SCHEDULE	SCHED
ALTERNATE	ALT	ELEVATOR	EL	LIGHT	LT	SCREW	SCR
ALUMINUM	ALUM	ELEVATOR	ELEV	LOUVRE	LVR	SECTION	SECT
APARTMENT	APT	EPOXY	EP	MANUFACTURE	MFG	SELF ADHESIVE	SA
APPROXIMATE	APPROX	EQUAL	EQ	MARK	MRK	SHEATHING	SHTG
ARCHITECTURE	ARCH	EQUALLY SPACED	EQ SP	MASONRY OPENING	MO	SHEET	SHIT
BEAM	BM	EQUIPMENT	EQUIP	MATERIAL	MAT	SHEET VINYL	SV
BENCH MARK	BM	EXISTING	EXIST	MECHANICAL	MECH	SIMILAR	SIM
BETWEEN	BTWN	EXPANSION	EXP	MINIMUM	MIN	SOLID CORE	SC
BLOCK	BLK	EXTERIOR	EXT	MISCELLANEOUS	MISC	SOUTH	S
BOARD	BD	EXTRUDE	EXTR	NEAR FACE	NF	SPECIFICATION	SPEC
BOTH SIDES	BS	FACE TO FACE	F/F	NEAR SIDE	NS	SPRUCE	SPR
BOTH WAYS	BW	FAR SIDE	FS	NORTH	N	SPRUCE, PINE OR FIR	SP/P
BOTTOM	BOT	FIBREBOARD	FBRBD	NOT APPLICABLE	N/A	STAIN	ST
BUILDING	BLDG	FINISH	FIN	NOT IN CONTRACT	NIC	STAINLESS STEEL	SS
CARPET	CPT	FLOOR	FL	NOT TO SCALE	NTS	STANDARD	STD
CAST IRON	CI	FLOOR DRAIN	FD	NUMBER	NO	STEEL	STL
CEILING	CLG	FLOORING	FLG	ON CENTRE	O/C	STRUCTURAL	STRUCT
CEMENT BOARD	CBD	FLUORESCENT	FLR	OUT TO OUT	O/O	SQUARE FEET	SF
CENTRE	CTR	FOOTING	FTG	OUTSIDE DIAMETER	OD	TEMPORARY	TEMP
CENTRE TO CENTRE	C/C	FOUNDATION	FDN	OUTSIDE FACE	OF	THROUGH	THRU
CERAMIC TILE	CT	FULL SIZE	FS	OVERHEAD	OH	TO MATCH EXISTING	TME
CIRCLE	CIRC	GALVANIZED	GALV	PAINT	PT	TONGUE AND GROOVE	T&G
CLEAR	CLR	GALVANIZED IRON	GI	PAINTED	PTD	TOP AND BOTTOM	T&B
COLUMN	COL	GAUGE	GA	PARTITION	PTN	TOP OF	T/O
COMPLETE WITH	CW	GLASS	GL	PLYWOOD	PLYWD	TYPICAL	TYP
CONCRETE	CONC	HARDWARE	HDW	PRECAST	PC	UNDER SIDE	UIS
CONCRETE BLOCK	CBLK	HEIGHT	HGT	PRECAST CONCRETE	PC CONC	UNDERCUT	UCUT
CONSTRUCTION	CONST	HEXAGON	HEX	PREFABRICATION	PREFAB	URNAL	UR
CONTINUOUS	CONT	HOLLOW CORE	HC	PREFINISHED	PREFIN	VAPOUR BARRIER	VB
CONTROL JOINT	CJ	HOLLOW METAL	HM	PRESSED STEEL	PS	VERTICAL	VERT
COUNTERSINK	CSK	HORIZONTAL	HORIZ	QUANTITY	QTY	VINYL ASBESTOS TILE	VAT
COVERED SHEET VINYL	CSV	INCLUSIVE	INCL	QUARRY TILE	QT	VINYL COVE BASE	VCB
DETAIL	DTL	INSIDE DIAMETER	ID	RADIUS	R	VINYL TILE	VT
DEMOLISH	DEMO	INSIDE FACE	IF	RAINWATER LEADER	RWL	VINYL WALL COVERING	VWC
DIAGONAL	DIAG	INSULATE	INSUL	REFERENCE	REF	WATER CLOSET	WC
DIAMETER	DIA	INTERIOR	INT	REINFORCE	REINF	WEATHERSTRIPPING	WS
DIMENSION	DIM	JOINT	JT	RESILIENT	RESIL	WEIGHT	WT
DOOR	DR	JOIST	JST	REVERSE	REV	WITH	W/
DOUBLE	DBL	KNOCK DOWN	KD	REVISION	REV	WITHOUT	WO
DOWN	DN	LAMINATE	LAM	RIGHT HAND	RH	WOOD	WD
DRAWING	DWG	LATEX EPOXY	LEP	RIGHT HAND REVERSE	RHR	WROUGHT IRON	WI

PROJECT TITLE: **FACILITY BUILDING**
SHEET TITLE: **TITLE PAGE**
DATE (Y/M/D): 13 12 07
SCALE: 1:50
JOB NO.: 13-168-01-47
REVISION #: 00
LOCATION: ISLAND LAKE, MANITOBA

METRIC



298 FORT STREET
WINNIPEG, MANITOBA
R3C 1E5

CLIENT:
PUBLIC WORKS AND GOVERNMENT SERVICES CANADA

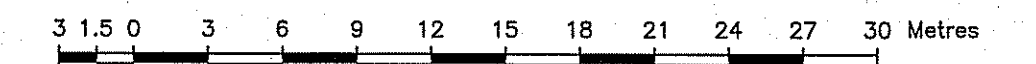
STEVENSON ISLAND
ISLAND LAKE, MANITOBA

PLAN OF TOPOGRAPHIC SURVEY
OF PART OF
LOT 176, GROUP 324
IN TOWNSHIP 56, RANGE 19 E.P.M.

BEING
PART PARCEL B, PLAN 664 (N DIV) PLTO

STEVENSON ISLAND
ISLAND LAKE
MANITOBA

SCALE - 1 : 300



TITLE INFORMATION:

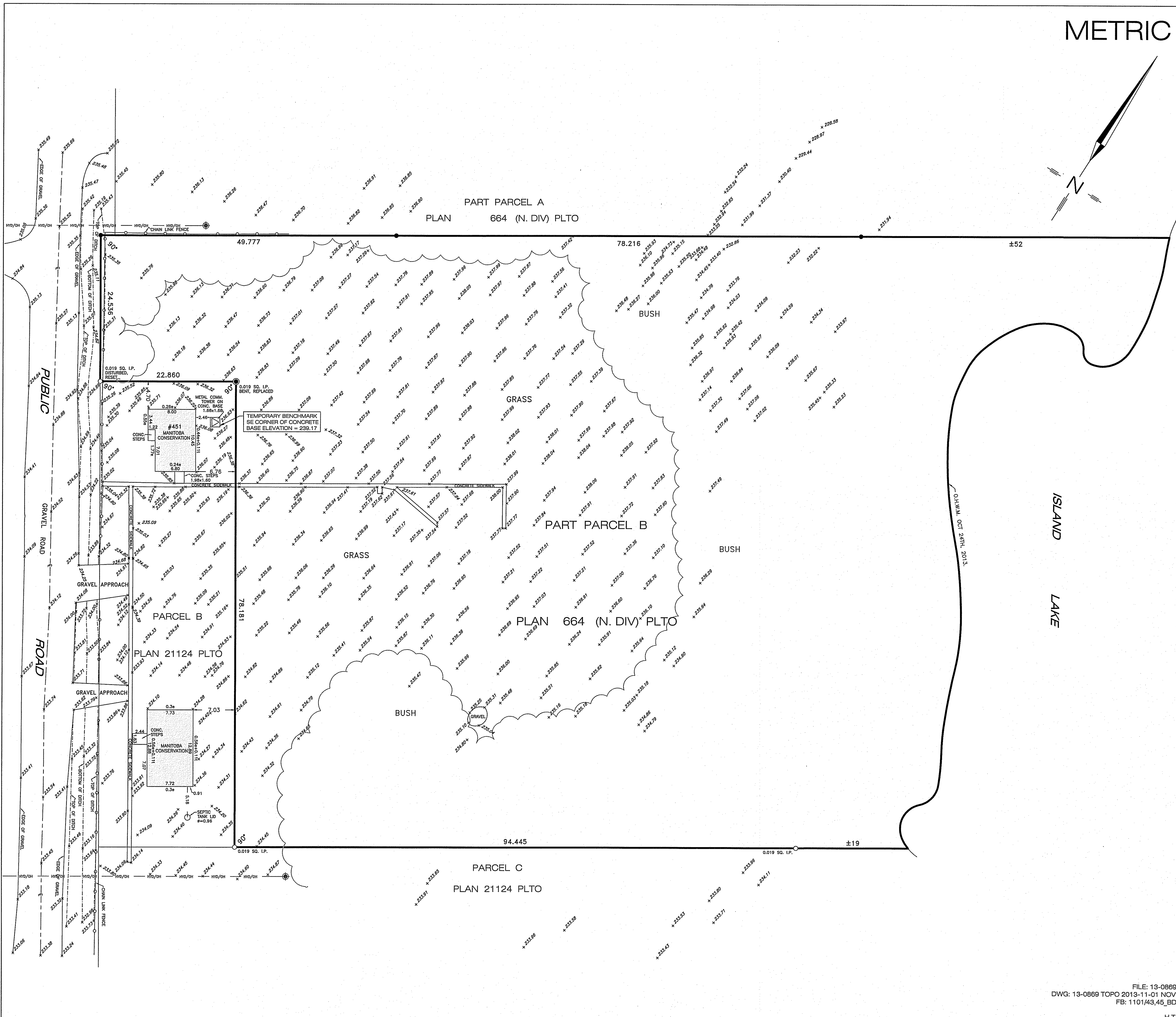
CERTIFICATE OF TITLE: 1848300/3 P.L.T.O. (SEARCH DATE: SEPTEMBER 30, 2013)
REGISTERED OWNER: HER MAJESTY THE QUEEN IN RIGHT OF CANADA
LEGAL DESCRIPTION: PARCEL B PLAN 664 PLTO (N DIV) IN 56-19 EPM EXC
FIRSTLY: PLAN S542 PLTO (N DIV) AND 21124 PLTO
SECONDLY: ALL MINES, MINERALS AND OTHER RESERVATIONS
AS CONTAINED IN THE CROWN LANDS ACT
ENCUMBRANCES: NONE.

LEGEND

- Survey monuments found on the ground are described and shown thus
- Iron bars 0.019 x 0.019 x 0.762 placed are shown thus
- Property Lines and Dimensions 100.000
- Fences
- Power Pole
- Hydro Cables (overhead)

NOTES

All dimensions are in metres and may be converted to feet by multiplying by 3.28084.
Elevations are referred to Geodetic Datum and are indicated thus
This survey was made between the 23rd and 24th days of October, 2013.
SHOULD INFORMATION ON THE DIGITAL FILE DIFFER FROM THE INFORMATION SHOWN ON THE ORIGINAL HARD COPY, AS PROVIDED BY OUR FIRM, THE LATTER WILL GOVERN.



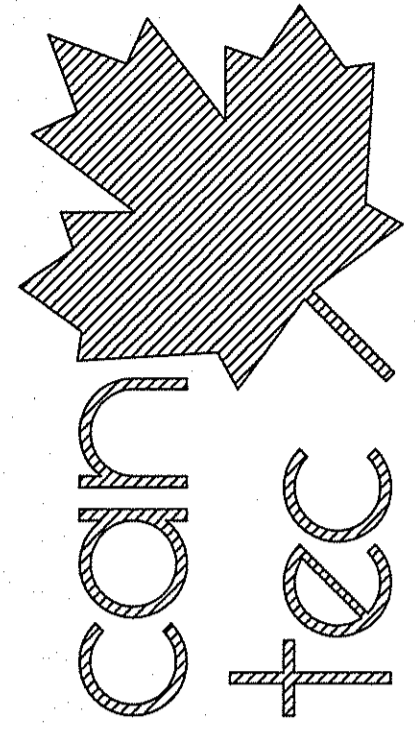
FILE: 13-0869
DWG: 13-0869 TOPO 2013-11-01 NOV
FB: 1101/43,45, BD

H.T.

TRICIA CHRISTIE, M.L.S.
DATED THIS 1ST DAY OF NOVEMBER, 2013

©BARNES & DUNCAN, 2013 All rights reserved. No person may copy, reproduce, store, transmit, distribute or alter this document in whole or in part.

THIS DRAWING MUST NOT BE SCALED.
 THE GENERAL CONTRACTOR SHALL VERIFY ALL DIMENSIONS, DATUMS AND LEVELS PRIOR TO COMMENCEMENT OF WORK AND BE HELD RESPONSIBLE FOR REPORTING ANY DISCREPANCY OR OMISSION TO CAN-TEC SERVICES LTD. IMMEDIATELY.
 THIS DRAWING IS THE EXCLUSIVE PROPERTY OF CAN-TEC SERVICES LTD. AND CAN BE REPRODUCED ONLY WITH THE PERMISSION OF CAN-TEC SERVICES LTD. IN WHICH CASE THE REPRODUCTION MUST BEAR THEIR NAME AND THE ENGINEERING/DRAFTING FIRM.



ENGINEERING AND DRAFTING
 198 MAIN STREET, WINNIPEG, MANITOBA
 TEL: (204) 943-7222 FAX: (204) 947-8717
 WWW.CAN-TEC.COM

ISSUED FOR TENDER 14.08.10
 DATE (Y/M/D) BY
 REV. # REVISION

SEALED BY:

CHECKED BY: NC

DRAWN BY: RS

SCALE: AS NOTED

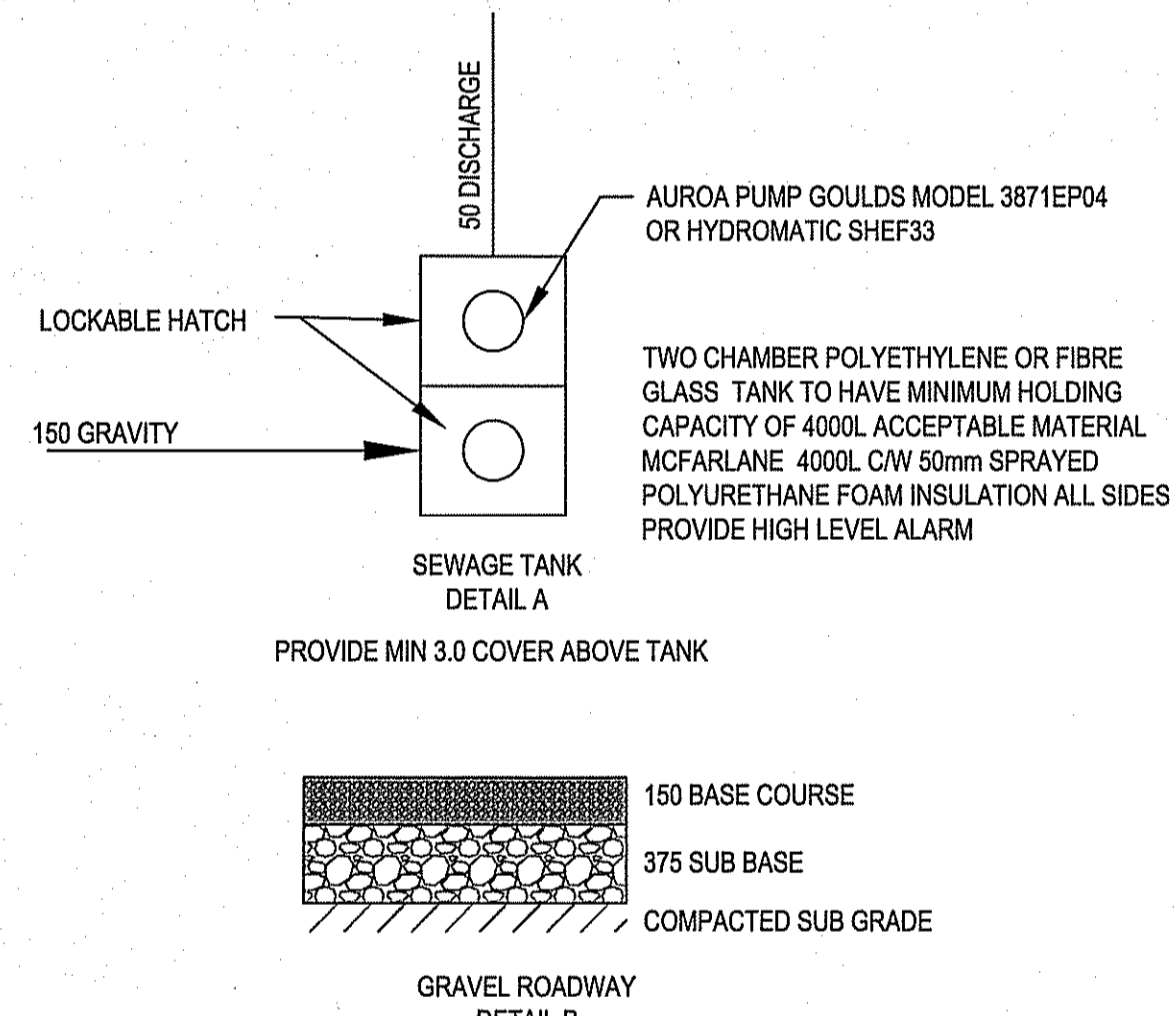
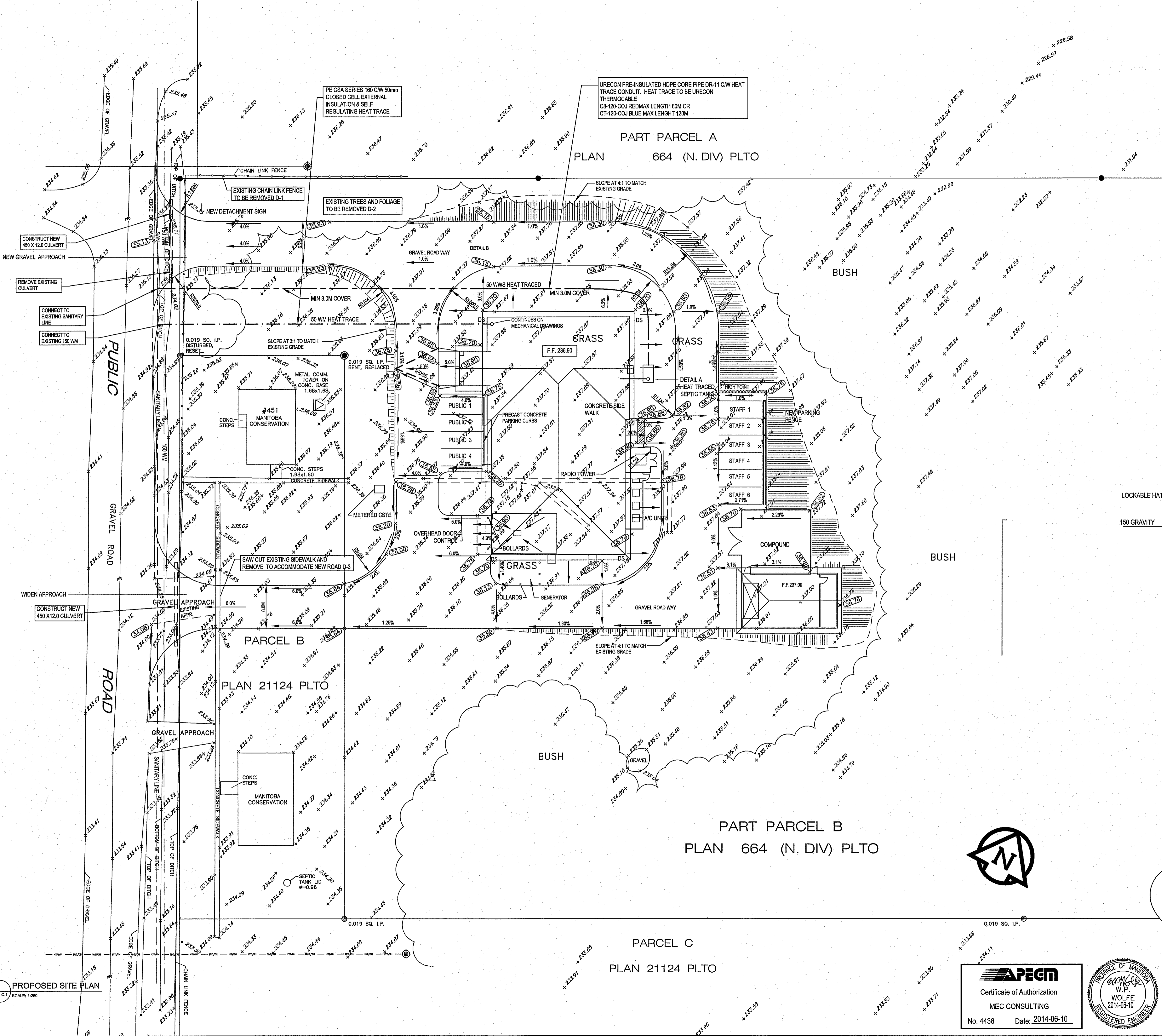
DATE (Y/M/D): 2014-05-08
 LOCATION: ISLAND LAKE, MANITOBA

DESIGN STAGE

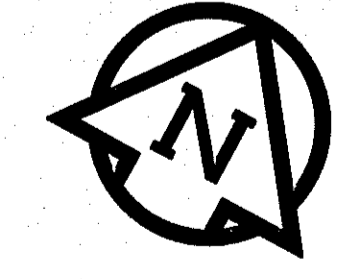
C1.0

REVISION #: 00

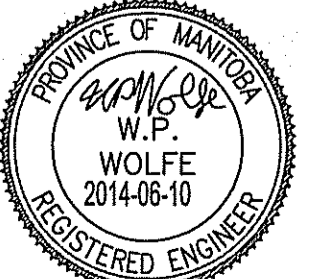
13-168-01-47



- DEMOLITION NOTES**
- D-1 REMOVE EXISTING CHAIN LINK FENCE.
 - D-2 REMOVE EXISTING TREES & FOLIAGE AS REQUIRED.
 - D-3 REMOVE EXISTING CULVERT.



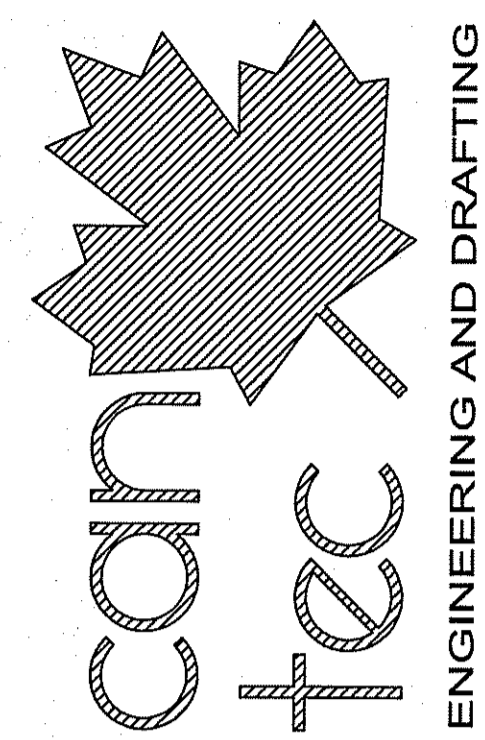
APEGM
 Certificate of Authorization
 MEC CONSULTING
 No. 4438 Date: 2014-06-10



MEC CONSULTING		14 - 395 BERRY STREET WINNIPEG, MANITOBA R3J 1N6		Tel: (204) 783-0757 Fax: (204) 774-3778 manengco@mts.net	
DRN	CANTEC	APP	WPW	MEC DWG No.	REV
CHK	WPW	DATE	2014-06-09	14006	0

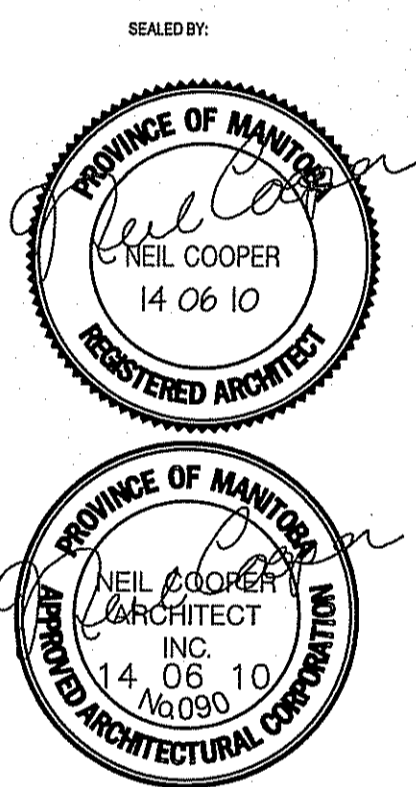
PROPOSED SITE PLAN
 SCALE: 1:250

THIS DRAWING MUST NOT BE SCALED.
 THE GENERAL CONTRACTOR SHALL VERIFY ALL DIMENSIONS, DATUMS AND LEVELS PRIOR TO COMMENCEMENT OF WORK AND IS HELD RESPONSIBLE FOR REPORTING ANY DISCREPANCY OR OMISSION TO CAN-TEC SERVICES LTD. IMMEDIATELY.
 THIS DRAWING IS THE EXCLUSIVE PROPERTY OF CAN-TEC SERVICES LTD. AND CAN BE REPRODUCED ONLY WITH THE PERMISSION OF CAN-TEC SERVICES LTD. IN WHICH CASE THE REPRODUCTION MUST BEAR THEIR NAME AS THE ENGINEERING/DRAFTING FIRM.
<http://www.can-tec.com>



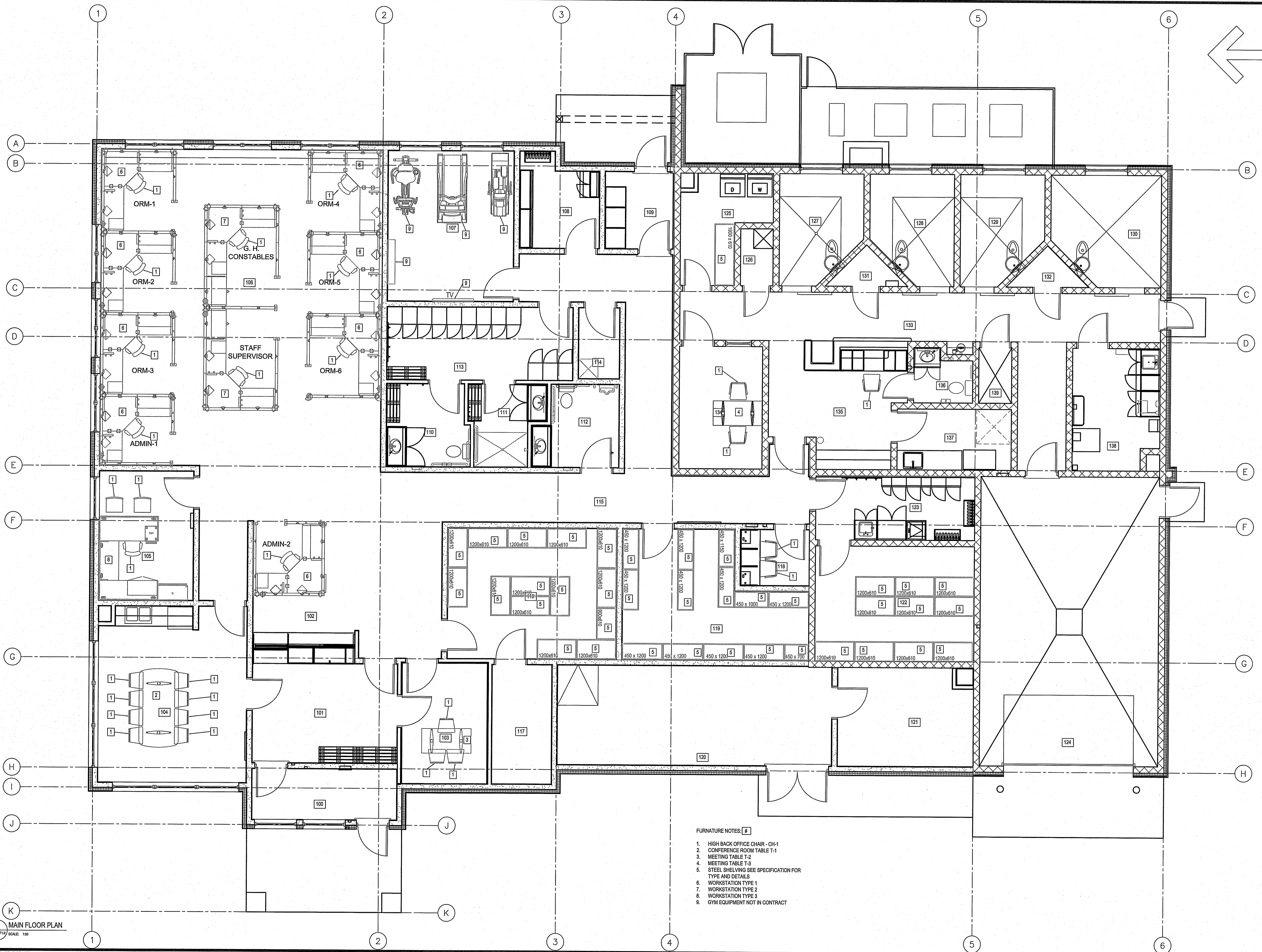
1848 MAIN STREET, WINNIPEG, MANITOBA
 TEL: (204) 945-7222 Fax: (204) 942-5717

REV. # | DATE (Y/M/D) | REV. BY | REV. # | DATE (Y/M/D) | REV. BY
 10 | ISSUED FOR TENDER | 14/06/10 | RS
 9 | ISSUED FOR 65% REVIEW | 14/06/10 | RS
 8 | ISSUED FOR 30% REVIEW | 14/06/10 | RS
 7 | REVISION | 14/06/10 | RS



PROJECT TITLE: FACILITY BUILDING
 SHEET TITLE: MAIN FLOOR PLAN - FURNITURE
 DATE (Y/M/D): 13.12.07
 LOCATION: ISLAND LAKE, MANITOBA
 DRAWN BY: RS
 CHECKED BY: NC

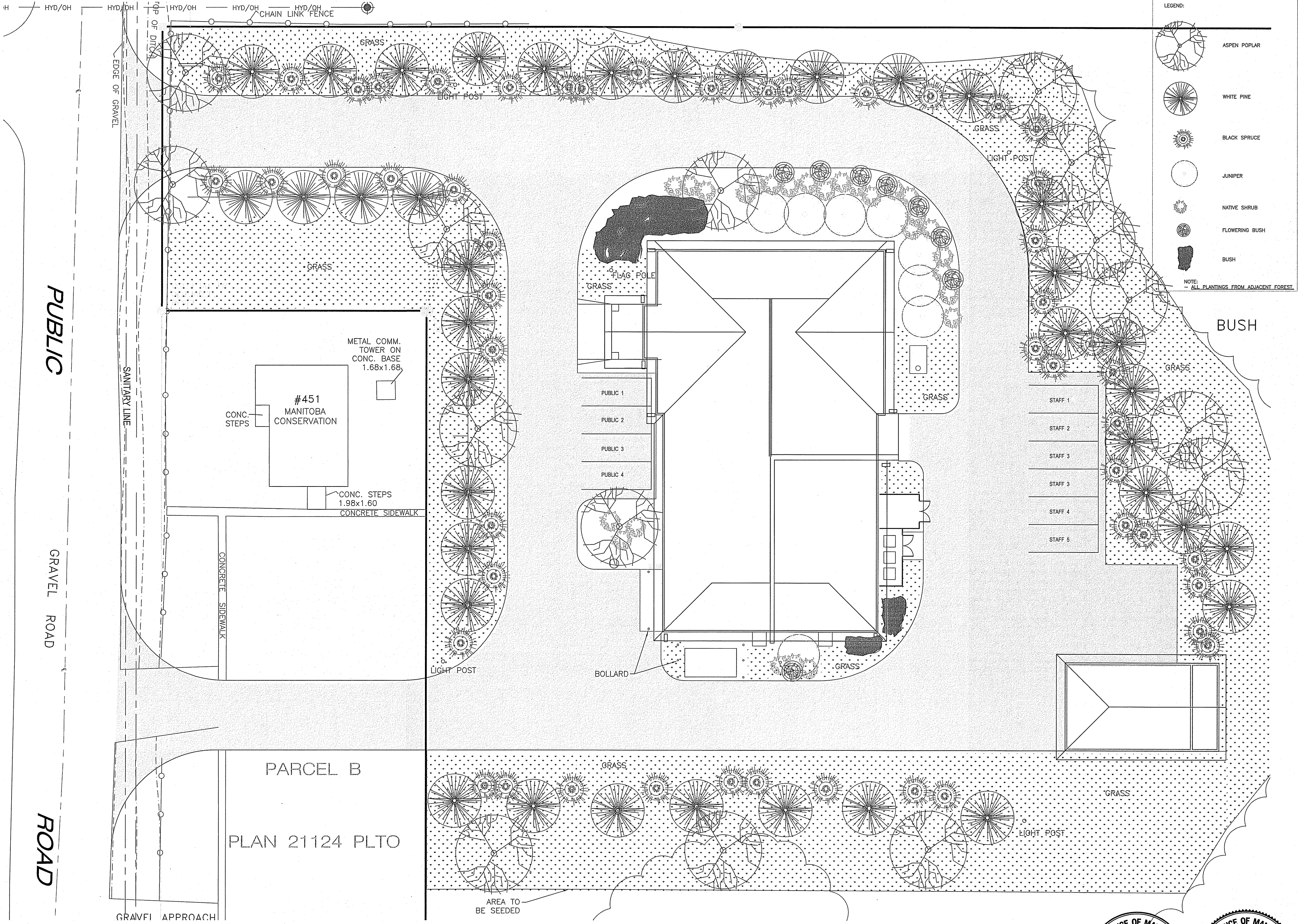
TENDER
AF1.0
 REVISION #: 00
 JOB NO.: 13-168-01-47



FURNITURE NOTES: [Z]

1. HIGH BACK OFFICE CHAIR - CH-1
2. CONFERENCE ROOM TABLE T-1
3. MEETING TABLE T-2
4. MEETING TABLE T-3
5. STEEL SHELVING SEE SPECIFICATION FOR TYPE AND DETAILS
6. WORKSTATION TYPE 1
7. WORKSTATION TYPE 2
8. WORKSTATION TYPE 3
9. GYM EQUIPMENT NOT IN CONTRACT

1 MAIN FLOOR PLAN
 AF1.0/AF1.0 SCALE: 1/50



LEGEND:

- ASPEN POPLAR
- WHITE PINE
- BLACK SPRUCE
- JUNIPER
- NATIVE SHRUB
- FLOWERING BUSH
- BUSH

NOTE:
ALL PLANTINGS FROM ADJACENT FOREST.

Neil Cooper Architect Inc.
10-393 Berry Street, Winnipeg, Manitoba R3J 1N8

ENGINEERING AND DRAFTING
1948 MAIN STREET, WINNIPEG, MANITOBA
TEL: (204) 943-7222 Fax: (204) 947-5717
http://www.canotec.com

REV.	DATE (YY/MM/DD)	BY	REVISION
D	14 06 10	RS	ISSUED FOR TENDER
B	14 06 08	RS	ISSUED FOR 60% REVIEW
A	14 01 31	RS	ISSUED FOR 33% REVIEW
REV. #			

SEALED BY:

PROJECT TITLE
FACILITY BUILDING

SHEET TITLE
ENLARGED - SITE PLAN-LANDSCAPE

DATE (YY/MM/DD)
13 12 07

SCALE
AS NOTED

LOCATION
ISLAND LAKE, MANITOBA

CHECKED BY
NC

DRAWN BY
RS

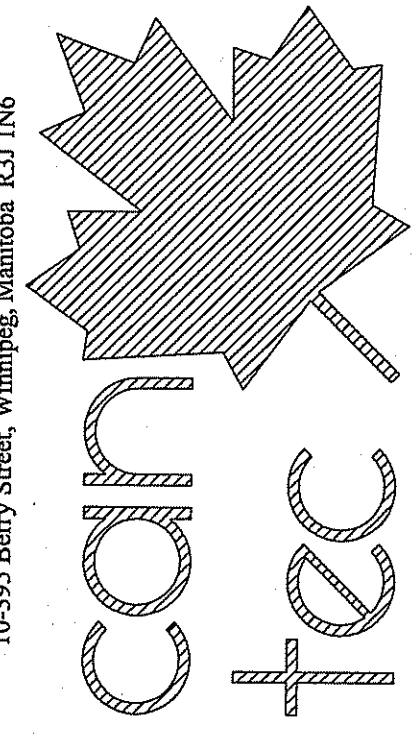
PROVINCE OF MANITOBA ARCHITECTURAL CORPORATION
NEIL COOPER ARCHITECT INC.
10 JUNE 2014 No.090

PROVINCE OF MANITOBA REGISTERED ARCHITECT
NEIL COOPER
10 JUNE 2014

TENDER
AL1.0
REVISION #: 00
JOB NO.
13-168-01-47

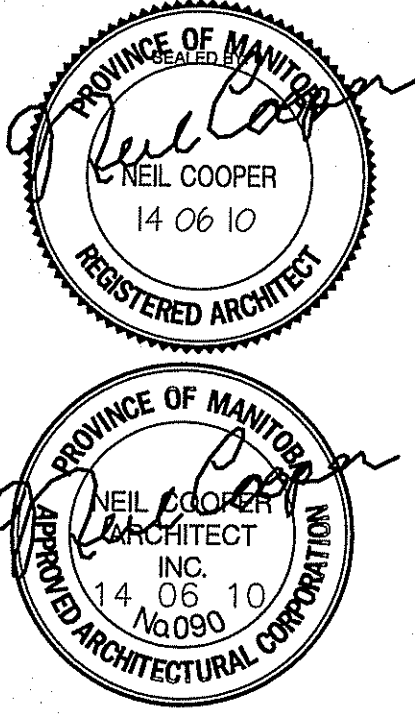
THIS DRAWING MUST NOT BE SCALED.
 THE GENERAL CONTRACTOR SHALL VERIFY ALL DIMENSIONS, DATING AND LEVELS PRIOR TO COMMENCEMENT OF WORK AND IS HELD RESPONSIBLE FOR REPORTING ANY DISCREPANCY OR OMISSION TO CAN-TEC SERVICES LTD IMMEDIATELY.
 THIS DRAWING IS THE EXCLUSIVE PROPERTY OF CAN-TEC SERVICES LTD. AND CAN BE REPRODUCED ONLY WITH THE PERMISSION OF CAN-TEC SERVICES LTD. IN WHICH CASE THE REPRODUCTION MUST BEAR THEIR NAME AS THE ENGINEERING/DRAFTING FIRM.
 http://www.can-tec.com

Neil Cooper Architect Inc.
 10-395 Berry Street, Winnipeg, Manitoba R3J 1N6



ENGINEERING AND DRAFTING
 188 MAIN STREET, WINNIPEG, MANITOBA TEL: (204) 943-7222 Fax: (204) 943-5717

ISSUED FOR TENDER	14.06.08	RS
ISSUED FOR 50% REVIEW	14.06.08	RS
ISSUED FOR 65% REVIEW	14.06.08	RS
ISSUED FOR 33% REVIEW	14.06.08	RS
REVISED	14.06.10	RS



CHECKED BY	NC
DRAWN BY	RS
SCALE	AS NOTED
DATE (Y/M/D)	13 12 07
LOCATION	ISLAND LAKE, MANITOBA

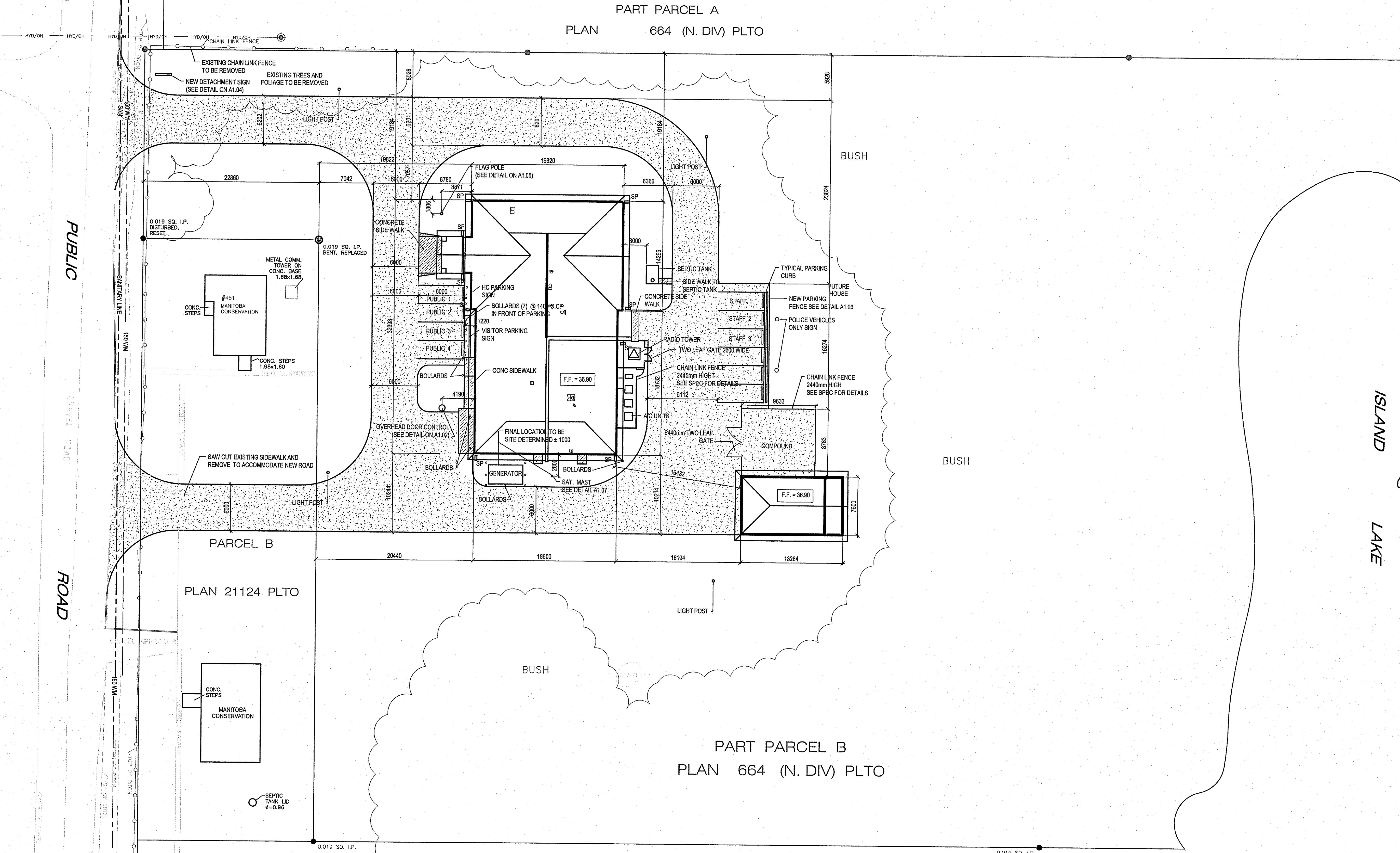
PROJECT TITLE
FACILITY BUILDING

SHEET TITLE
CIVIL SITE PLAN

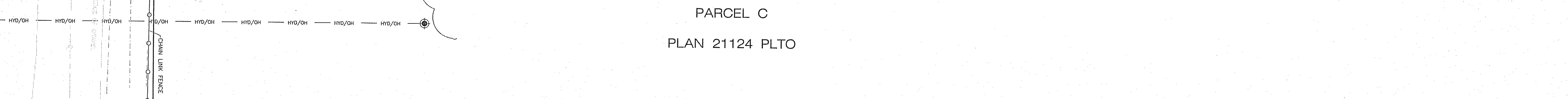
TENDER
A0.1

REVISION #: 00
 JOB NO. 13-168-01-47

PART PARCEL A
 PLAN 664 (N. DIV) PLTO



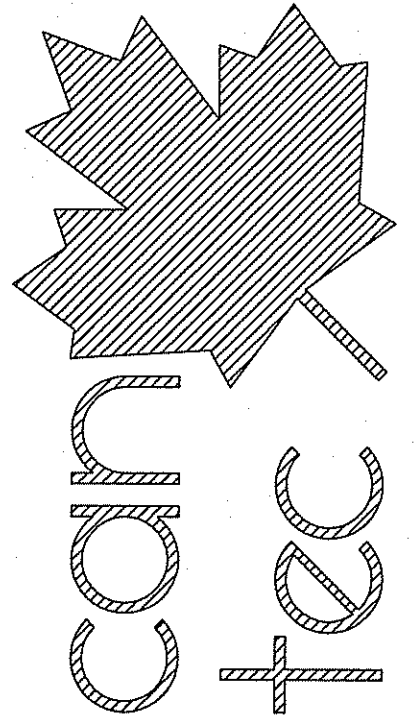
PART PARCEL B
 PLAN 664 (N. DIV) PLTO



PARCEL C
 PLAN 21124 PLTO

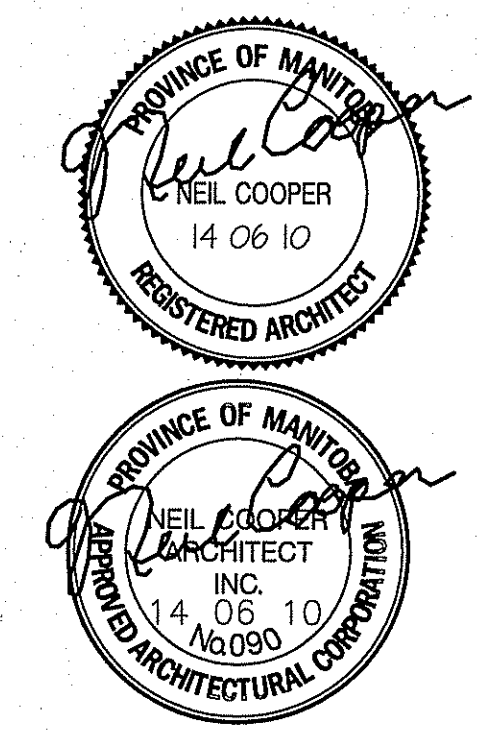
01 PROPOSED SITE PLAN
 SCALE: 1:250

THIS DRAWING MUST NOT BE SCALED.
 THE GENERAL CONTRACTOR SHALL VERIFY ALL DIMENSIONS, DATUMS AND LEVELS PRIOR TO COMMENCEMENT OF WORK AND IS HELD RESPONSIBLE FOR REPORTING ANY DISCREPANCY OR OMISSION TO CAN-TEC SERVICES LTD. IMMEDIATELY.
 THIS DRAWING IS THE EXCLUSIVE PROPERTY OF CAN-TEC SERVICES LTD. AND CAN BE REPRODUCED ONLY WITH THE PERMISSION OF CAN-TEC SERVICES LTD. IN WHICH CASE THE REPRODUCTION MUST BEAR THEIR NAME AS THE ENGINEERING/DRAFTING FIRM.

Neil Cooper Architect Inc.
 10-395 Berry Street, Winnipeg, Manitoba R2T 1N6

 ENGINEERING AND DRAFTING
 194 MAIN STREET, WINNIPEG, MANITOBA
 TEL: (204) 943-7222 Fax: (204) 943-5717
 WWW.CAN-TECSERVICES.COM

ISSUED FOR TENDER 14.06.09
 ISSUED FOR 99% REVIEW 14.06.09
 ISSUED FOR 66% REVIEW 14.06.09
 ISSUED FOR 33% REVIEW 14.06.09
 DATE PLOTTED 14.06.10
 REVISION

SEALED BY:



CHECKED BY: NC

DRAWN BY: RS

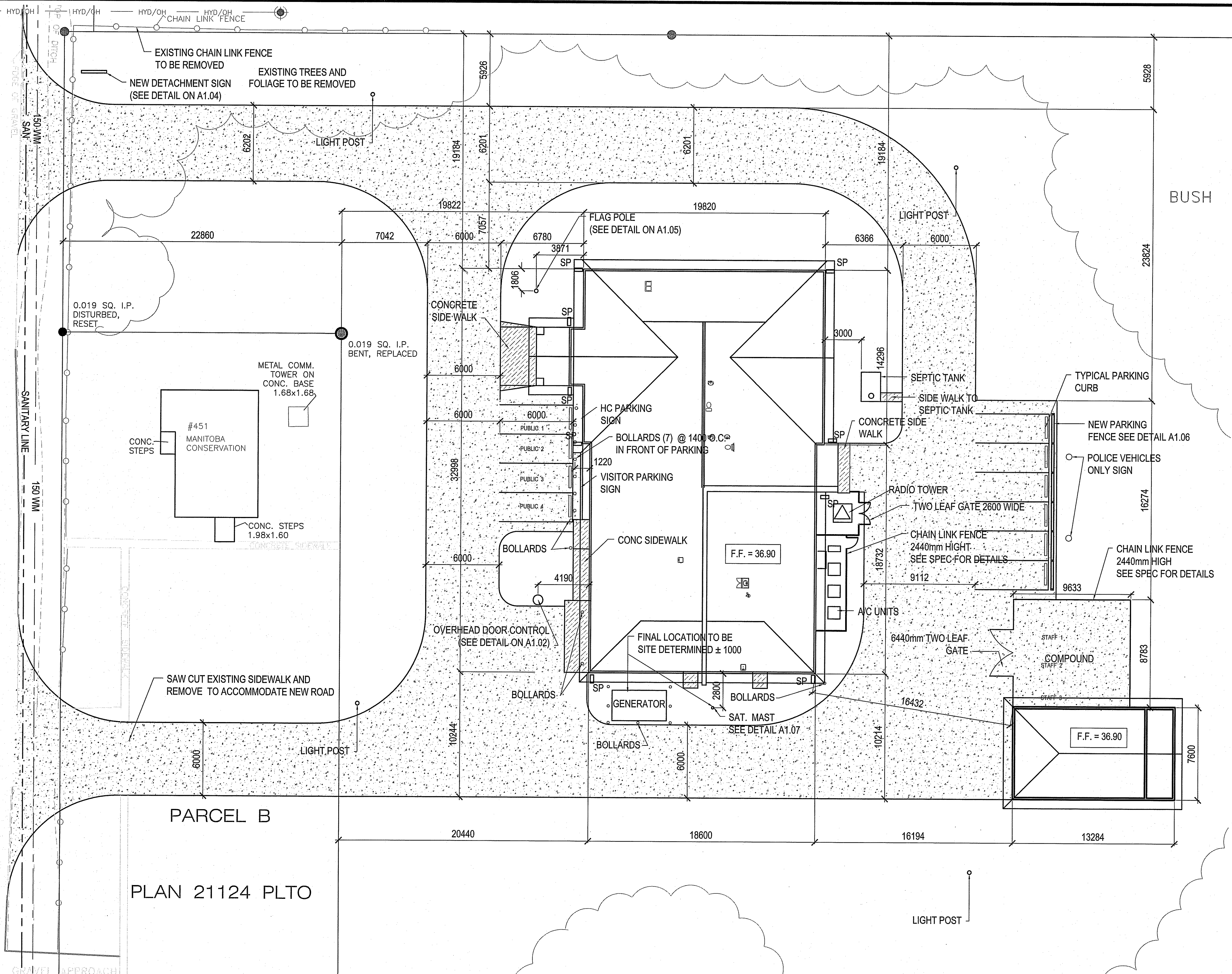
SCALE: AS NOTED

DATE (Y/M/D): 13 12 07

LOCATION: ISLAND LAKE, MANITOBA

PROJECT TITLE: FACILITY BUILDING
 SHEET TITLE: ENLARGED - SITE PLAN

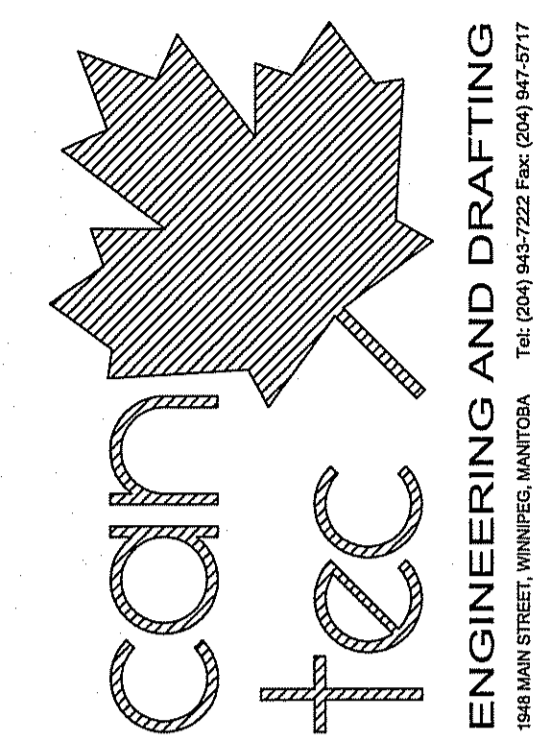
TENDER
A0.2
 REVISION #: 00
 JOB NO.: 13-168-01-47



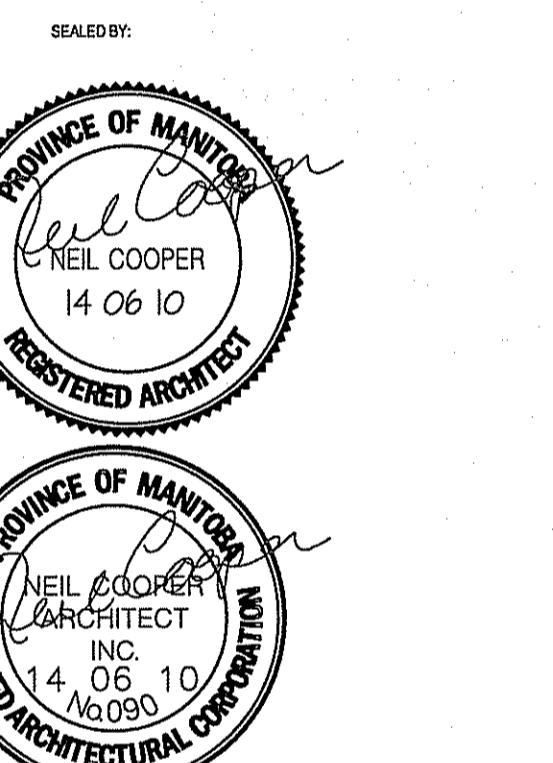
HYD./OH
 SAN.
 CHAIN LINK FENCE
 EXISTING CHAIN LINK FENCE TO BE REMOVED
 NEW DETACHMENT SIGN (SEE DETAIL ON A1.04)
 EXISTING TREES AND FOLIAGE TO BE REMOVED
 LIGHT POST
 PUBLIC ROAD
 GRAVEL ROAD
 SANITARY LINE
 150 MM
 150 MM
 150 MM

01 ENLARGED - PROPOSED SITE PLAN
 13/12/07 SCALE: 1:100

THIS DRAWING MUST NOT BE SCALED.
 THE GENERAL CONTRACTOR SHALL VERIFY ALL DIMENSIONS, DATUMS AND LEVELS PRIOR TO COMMENCEMENT OF WORK AND IS HELD RESPONSIBLE FOR REPORTING ANY DISCREPANCY OR OMISSION TO CAN-TEC SERVICES LTD. IMMEDIATELY.
 THIS DRAWING IS THE EXCLUSIVE PROPERTY OF CAN-TEC SERVICES LTD. AND CAN BE REPRODUCED ONLY WITH THE PERMISSION OF CAN-TEC SERVICES LTD. IN WHICH CASE THE REPRODUCTION MUST BEAR THEIR NAME AS THE ENGINEERING/DRAFTING FIRM.

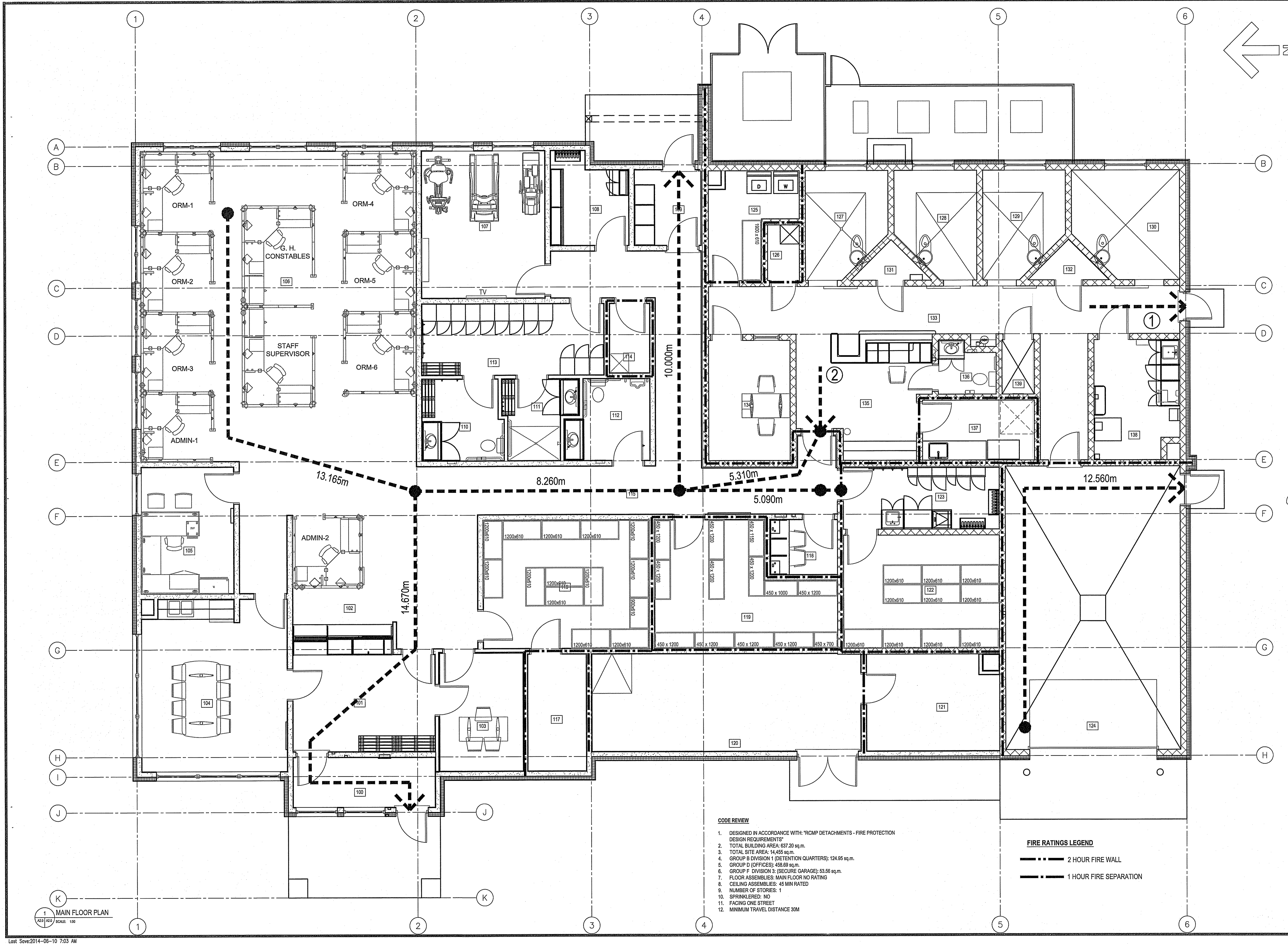


REV. #	REVISION	DATE (Y/M/D)	REV. BY
10	ISSUED FOR TENDER	14 06 10	RS
9	ISSUED FOR 90% REVIEW	14 06 10	RS
8	ISSUED FOR 85% REVIEW	14 06 10	RS
7	ISSUED FOR 35% REVIEW	14 02 11	RS



PROJECT TITLE: **FACILITY BUILDING**
 SHEET TITLE: **MAIN FLOOR PLAN - CODE COMPLIANCE**
 DATE (Y/M/D): 13 12 07
 SCALE: 1:50
 LOCATION: ISLAND LAKE, MANITOBA
 ORDERED BY: NC
 DRAWN BY: RS

REVISION # 00
 JOB NO. 13-168-01-47



- CODE REVIEW**
- DESIGNED IN ACCORDANCE WITH "RCMP DETACHMENTS - FIRE PROTECTION DESIGN REQUIREMENTS"
 - TOTAL BUILDING AREA: 637.20 sq.m.
 - TOTAL SITE AREA: 14,455 sq.m.
 - GROUP B DIVISION 1 (DETENTION QUARTERS): 124.85 sq.m.
 - GROUP D (OFFICES): 458.69 sq.m.
 - GROUP F DIVISION 3; (SECURE GARAGE): 53.56 sq.m.
 - FLOOR ASSEMBLIES: MAIN FLOOR NO RATING
 - CEILING ASSEMBLIES: 45 MIN RATED
 - NUMBER OF STORES: 1
 - SPRINKLERED: NO
 - FACING ONE STREET
 - MINIMUM TRAVEL DISTANCE 30M

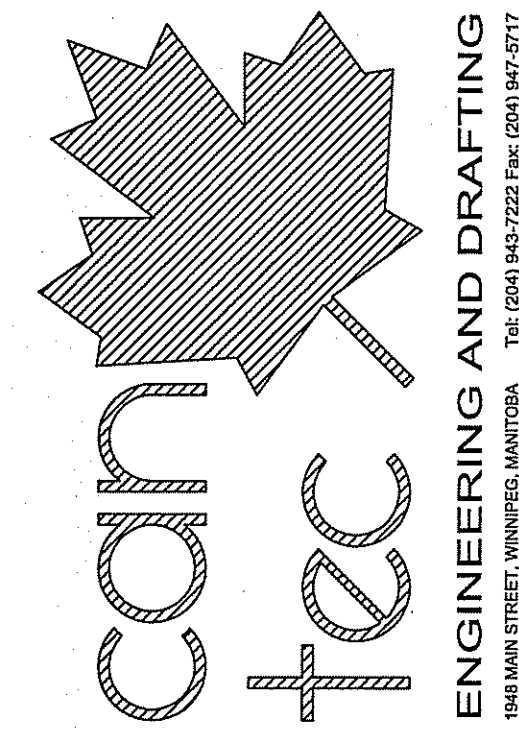
FIRE RATINGS LEGEND

--- 2 HOUR FIRE WALL

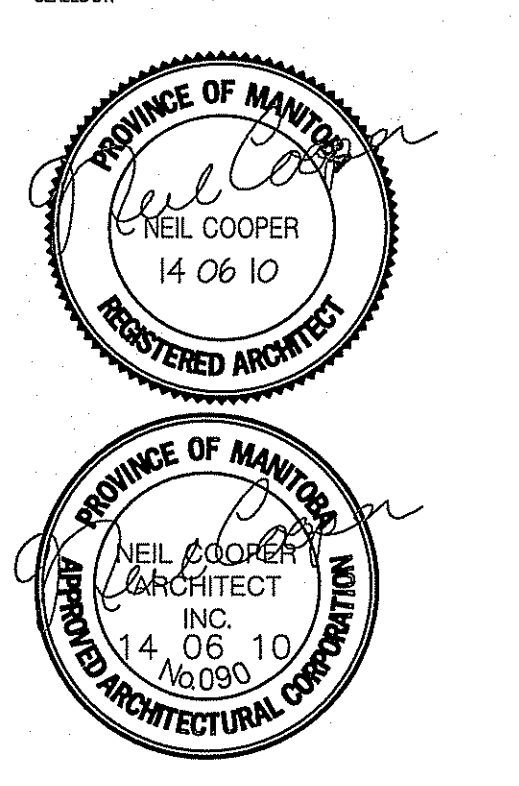
- - - 1 HOUR FIRE SEPARATION

1 MAIN FLOOR PLAN
 SCALE: 1:50

THIS DRAWING MUST NOT BE SCALED.
 THE GENERAL CONTRACTOR SHALL VERIFY ALL DIMENSIONS, DATINGS AND LEVELS PRIOR TO COMMENCEMENT OF WORK AND IS HELD RESPONSIBLE FOR REPORTING ANY DISCREPANCY OR OMISSION TO CAN-TEC SERVICES LTD. IMMEDIATELY.
 THIS DRAWING IS THE EXCLUSIVE PROPERTY OF CAN-TEC SERVICES LTD. AND CAN BE REPRODUCED ONLY WITH THE PERMISSION OF CAN-TEC SERVICES LTD. IN WHICH CASE THE REPRODUCTION MUST BEAR THEIR NAME AS THE ENGINEERING/DRAFTING FIRM.

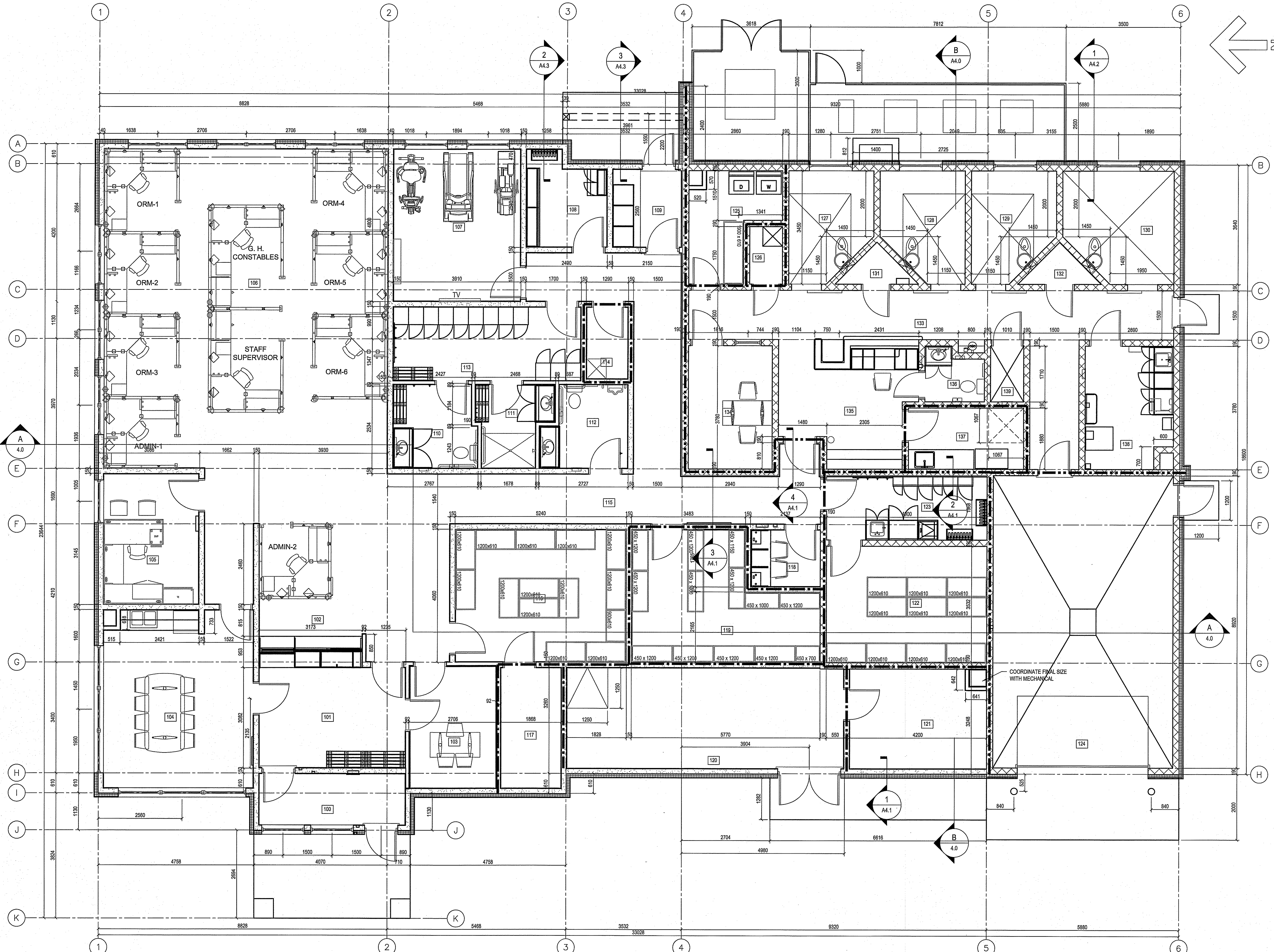


ISSUED FOR TENDER 14.06.10
 ISSUED FOR RFP REVIEW 14.06.10
 ISSUED FOR RFP REVIEW 14.06.10
 ISSUED FOR RFP REVIEW 14.06.10

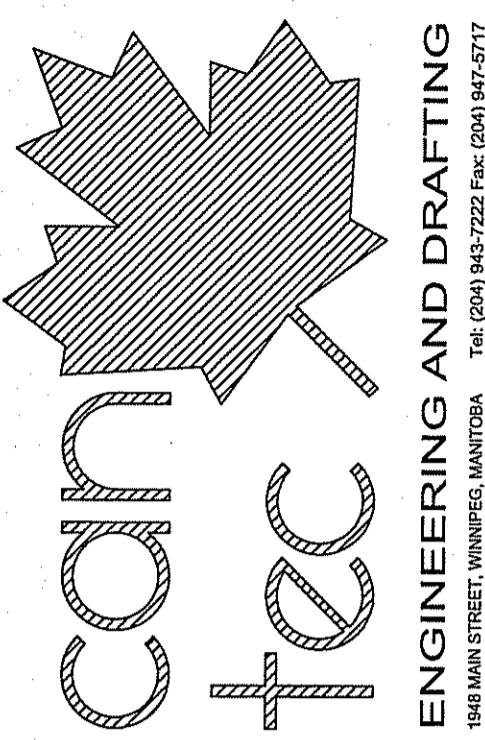


PROJECT TITLE: FACILITY BUILDING
 SHEET TITLE: MAIN FLOOR PLAN - DIMENSIONS
 DATE (Y/M/D): 13.12.07
 LOCATION: ISLAND LAKE, MANITOBA
 DRAWN BY: RS
 CHECKED BY: NC
 SCALE: 1:50

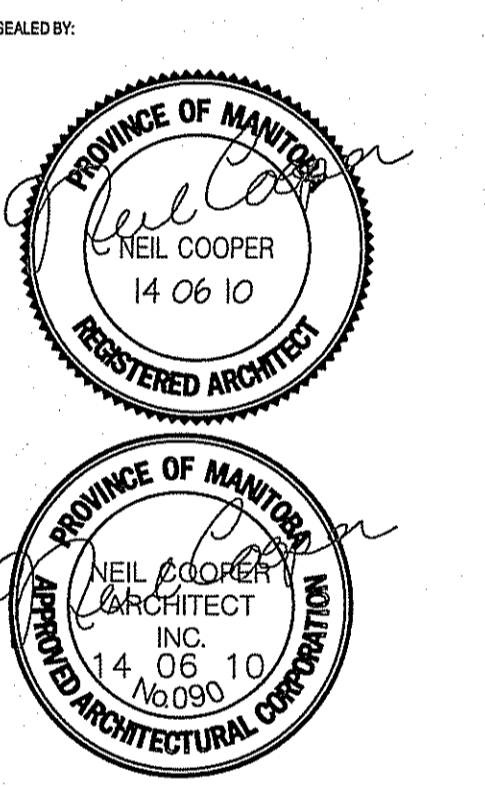
TENDER
A2.1
 REVISION #: 00
 JOB NO.: 13-168-01-47



THIS DRAWING MUST NOT BE SCALED.
 THE GENERAL CONTRACTOR SHALL VERIFY ALL DIMENSIONS, DATUMS AND LEVELS PRIOR TO COMMENCEMENT OF WORK AND IS HELD RESPONSIBLE FOR REPORTING ANY DISCREPANCY OR OMISSION TO CANTEC SERVICES LTD. IMMEDIATELY.
 THIS DRAWING IS THE EXCLUSIVE PROPERTY OF CANTEC SERVICES LTD. AND CAN BE REPRODUCED ONLY WITH THE PERMISSION OF CANTEC SERVICES LTD. IN WHICH CASE THE REPRODUCTION MUST BEAR THEIR NAME AS THE ENGINEERING/DRAFTING FIRM.
 http://www.cantecservices.com
 Tel: (204) 943-7222 Fax: (204) 943-5777

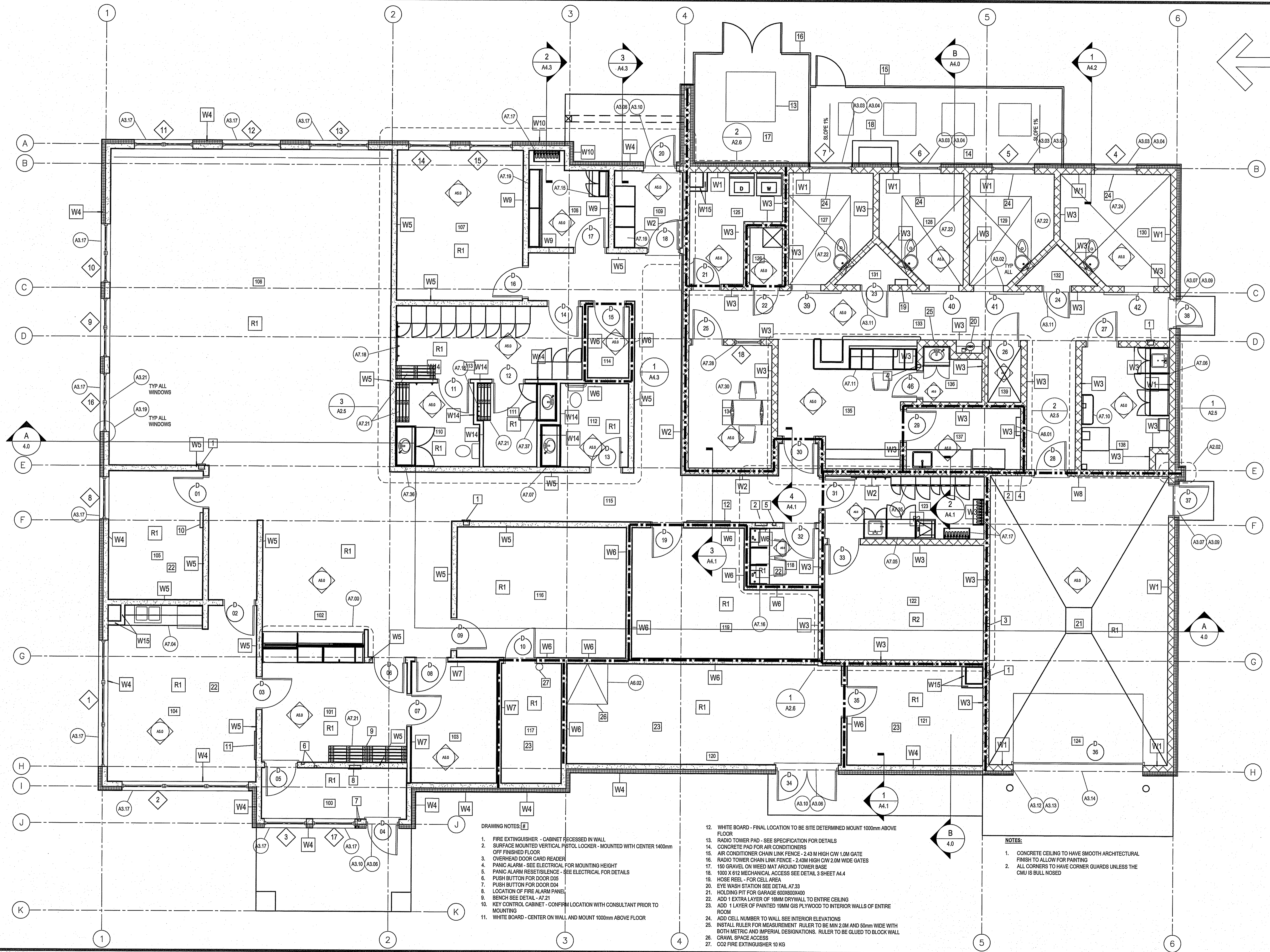


REVISIONS:
 REV. NO. | DATE (Y/M/D) | BY | REASON
 1 | 14/08/10 | NEIL COOPER | ISSUED FOR TENDER
 2 | 14/09/10 | NEIL COOPER | ISSUED FOR 30% REVIEW
 3 | 14/09/10 | NEIL COOPER | ISSUED FOR 30% REVIEW
 4 | 14/09/10 | NEIL COOPER | ISSUED FOR 30% REVIEW



PROJECT TITLE: FACILITY BUILDING
 SHEET TITLE: MAIN FLOOR PLAN - REFERENCES
 DATE (Y/M/D): 13-12-07
 DRAWN BY: RS
 CHECKED BY: NC
 SCALE: 1:50
 LOCATION: ISLAND LAKE, MANITOBA

TENDER
A2.2
 REVISION #: 00
 JOB NO.: 13-168-01-47



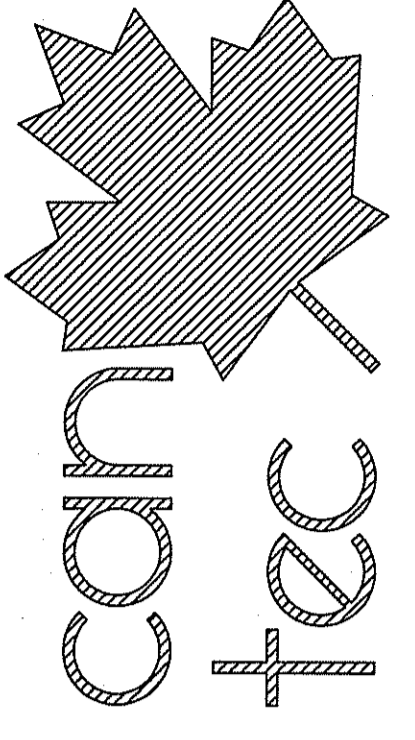
- DRAWING NOTES:**
1. FIRE EXTINGUISHER - CABINET RECESSED IN WALL
 2. SURFACE MOUNTED VERTICAL PISTOL LOCKER - MOUNTED WITH CENTER 1400mm OFF FINISHED FLOOR
 3. OVERHEAD DOOR CARD READER
 4. PANIC ALARM - SEE ELECTRICAL FOR MOUNTING HEIGHT
 5. PANIC ALARM RESET/SILENCE - SEE ELECTRICAL FOR DETAILS
 6. PUSH BUTTON FOR DOOR D05
 7. PUSH BUTTON FOR DOOR D04
 8. LOCATION OF FIRE ALARM PANEL
 9. BENCH SEE DETAIL - A7.21
 10. KEY CONTROL CABINET - CONFIRM LOCATION WITH CONSULTANT PRIOR TO MOUNTING
 11. WHITE BOARD - CENTER ON WALL AND MOUNT 1000mm ABOVE FLOOR

12. WHITE BOARD - FINAL LOCATION TO BE SITE DETERMINED MOUNT 1000mm ABOVE FLOOR
13. RADIO TOWER PAD - SEE SPECIFICATION FOR DETAILS
14. CONCRETE PAD FOR AIR CONDITIONERS
15. AIR CONDITIONER CHAIN LINK FENCE - 2.43 M HIGH CW 1.0M GATE
16. RADIO TOWER CHAIN LINK FENCE - 2.43M HIGH CW 2.0M WIDE GATES
17. 150 GRAVEL ON WEED MAT AROUND TOWER BASE
18. 1000 X 612 MECHANICAL ACCESS SEE DETAIL 3 SHEET A4.4
19. HOSE REEL - FOR CELL AREA
20. EYE WASH STATION SEE DETAIL A7.33
21. HOLDING PIT FOR GARAGE 600X600X400
22. ADD 1 EXTRA LAYER OF 18MM DRYWALL TO ENTIRE CEILING
23. ADD 1 LAYER OF PAINTED 19MM GIB PLYWOOD TO INTERIOR WALLS OF ENTIRE ROOM
24. ADD CELL NUMBER TO WALL SEE INTERIOR ELEVATIONS
25. INSTALL RULER FOR MEASUREMENT RULER TO BE MIN 2.0M AND 50mm WIDE WITH BOTH METRIC AND IMPERIAL DESIGNATIONS. RULER TO BE GLUED TO BLOCK WALL CRAWL SPACE ACCESS
26. CRAWL SPACE ACCESS
27. CO2 FIRE EXTINGUISHER 10 KG

- NOTES:**
1. CONCRETE CEILING TO HAVE SMOOTH ARCHITECTURAL FINISH TO ALLOW FOR PAINTING
 2. ALL CORNERS TO HAVE CORNER GUARDS UNLESS THE CMU IS BULL NOSED

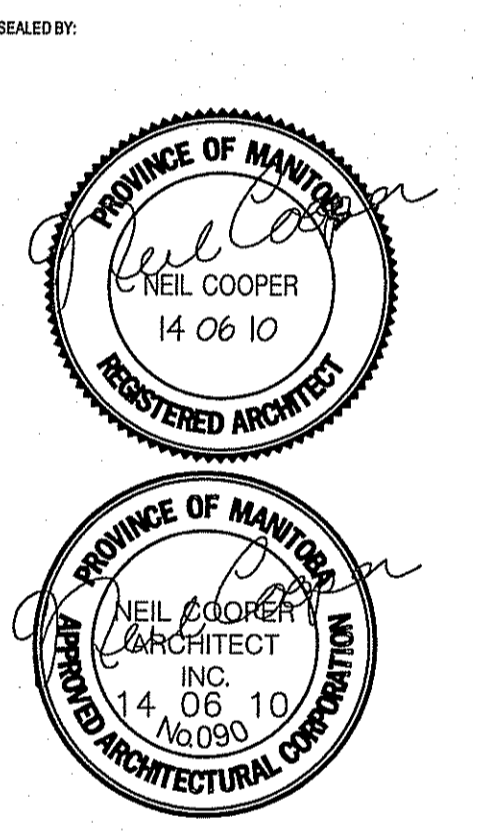
THIS DRAWING MUST NOT BE SCALED.
 THE GENERAL CONTRACTOR SHALL VERIFY ALL DIMENSIONS, DATUMS AND LEVELS PRIOR TO COMMENCEMENT OF WORK AND IS HELD RESPONSIBLE FOR REPORTING ANY DISCREPANCY OR OMISSION TO CAN-TEC SERVICES LTD. IMMEDIATELY.
 THIS DRAWING IS THE EXCLUSIVE PROPERTY OF CAN-TEC SERVICES LTD. AND CAN BE REPRODUCED ONLY WITH THE PERMISSION OF CAN-TEC SERVICES LTD. IN WHICH CASE THE REPRODUCTION MUST BEAR THEIR NAME AS THE ENGINEERING/DRAFTING FIRM.
<http://www.can-tec.com>

Neil Cooper Architect Inc.
 10-395 Berry Street, Winnipeg, Manitoba R3J 1N6



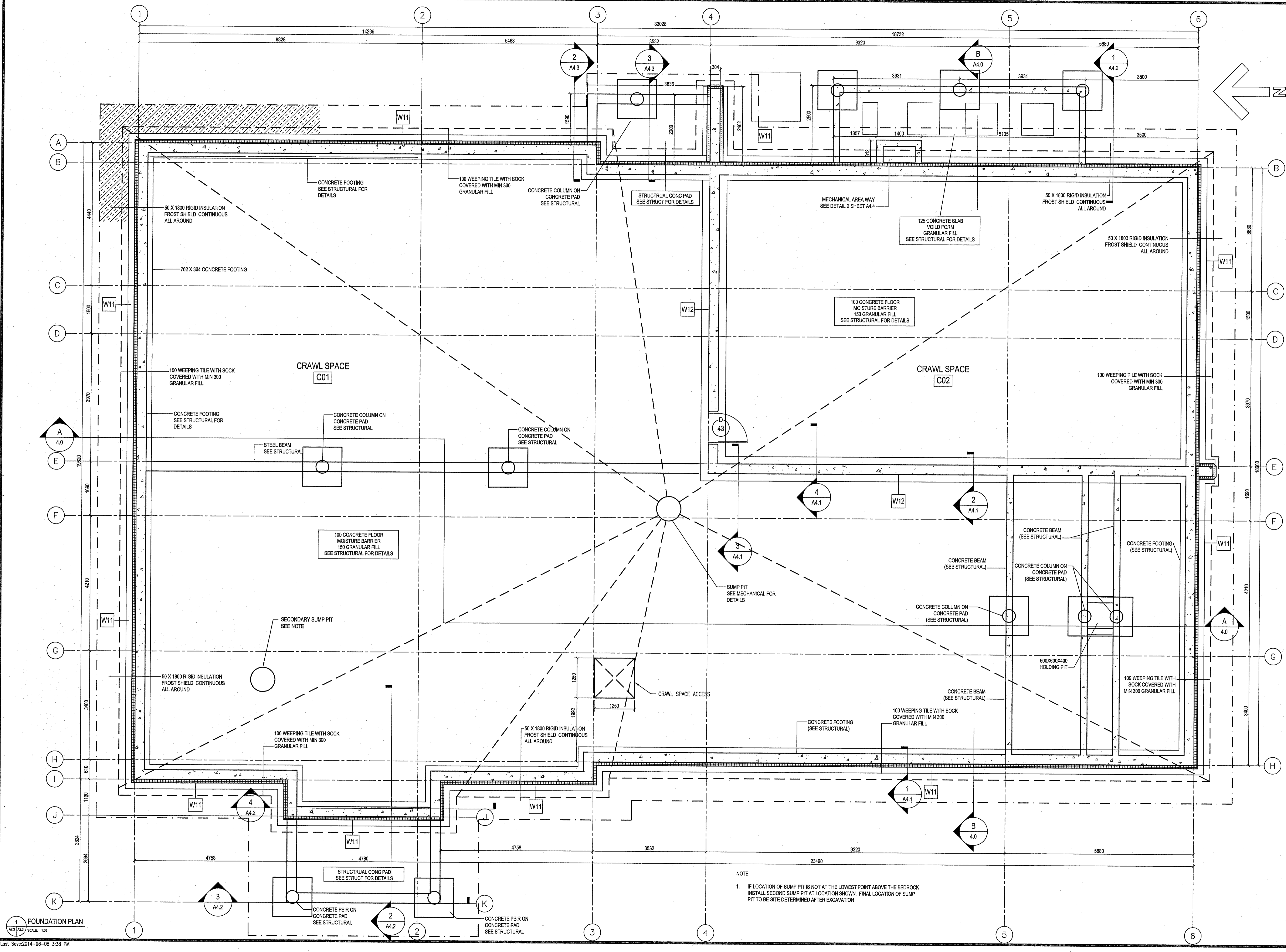
ENGINEERING AND DRAFTING
 10-395 BERRY STREET, WINNIPEG, MANITOBA
 TEL: (204) 943-7222 FAX: (204) 943-5717
<http://www.can-tec.com>

NO.	ISSUED FOR TENDER	DATE	BY
1	ISSUED FOR 30% REVIEW	14/06/10	NC
2	ISSUED FOR 30% REVIEW	14/06/10	NC
3	ISSUED FOR 30% REVIEW	14/06/10	NC
4	REVISION		

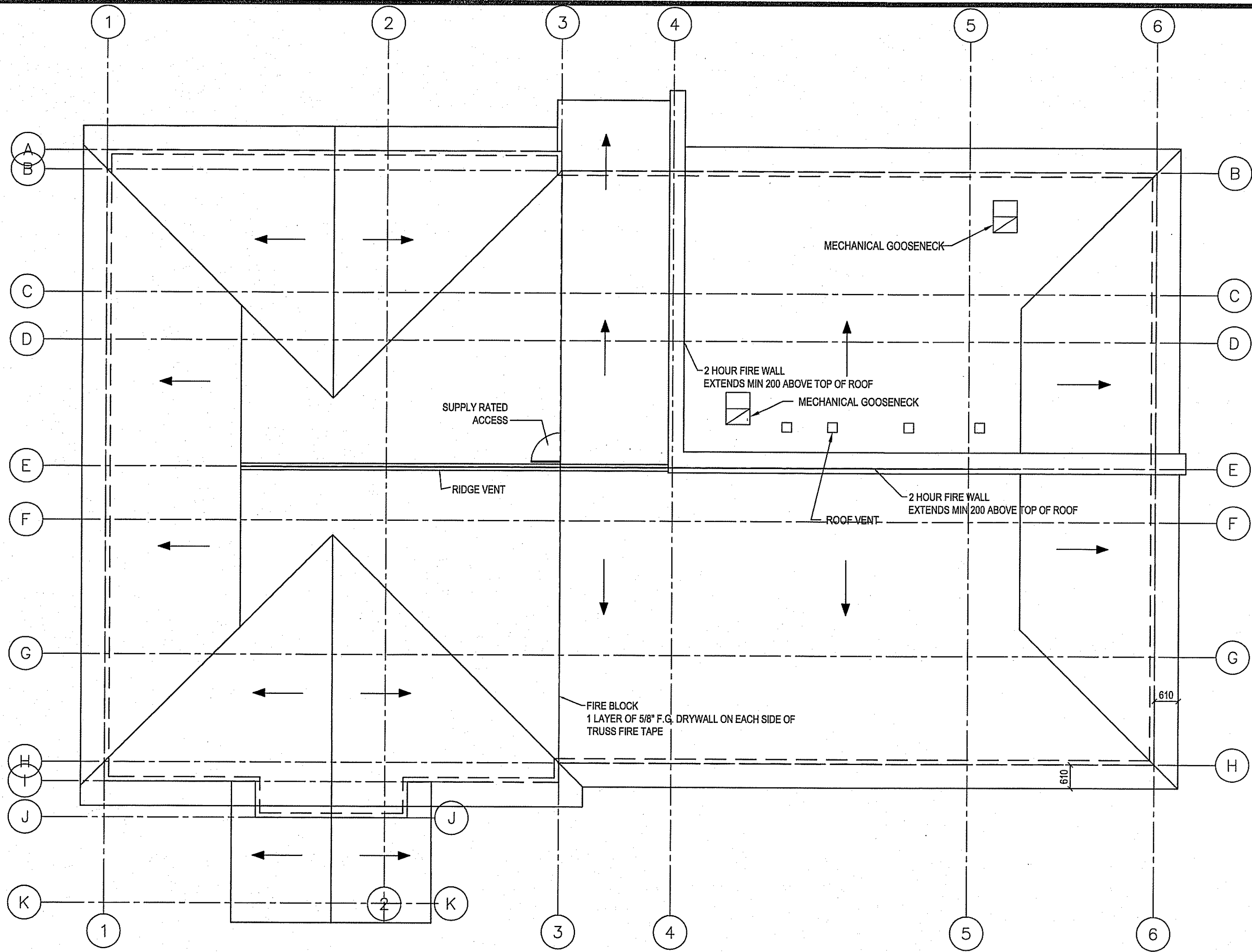


PROJECT TITLE: FACILITY BUILDING
 SHEET TITLE: CRAWL SPACE PLAN
 DATE (Y/M/D): 13/12/07
 SCALE: 1:50
 DRAWN BY: RS
 CHECKED BY: NC
 LOCATION: ISLAND LAKE, MANITOBA

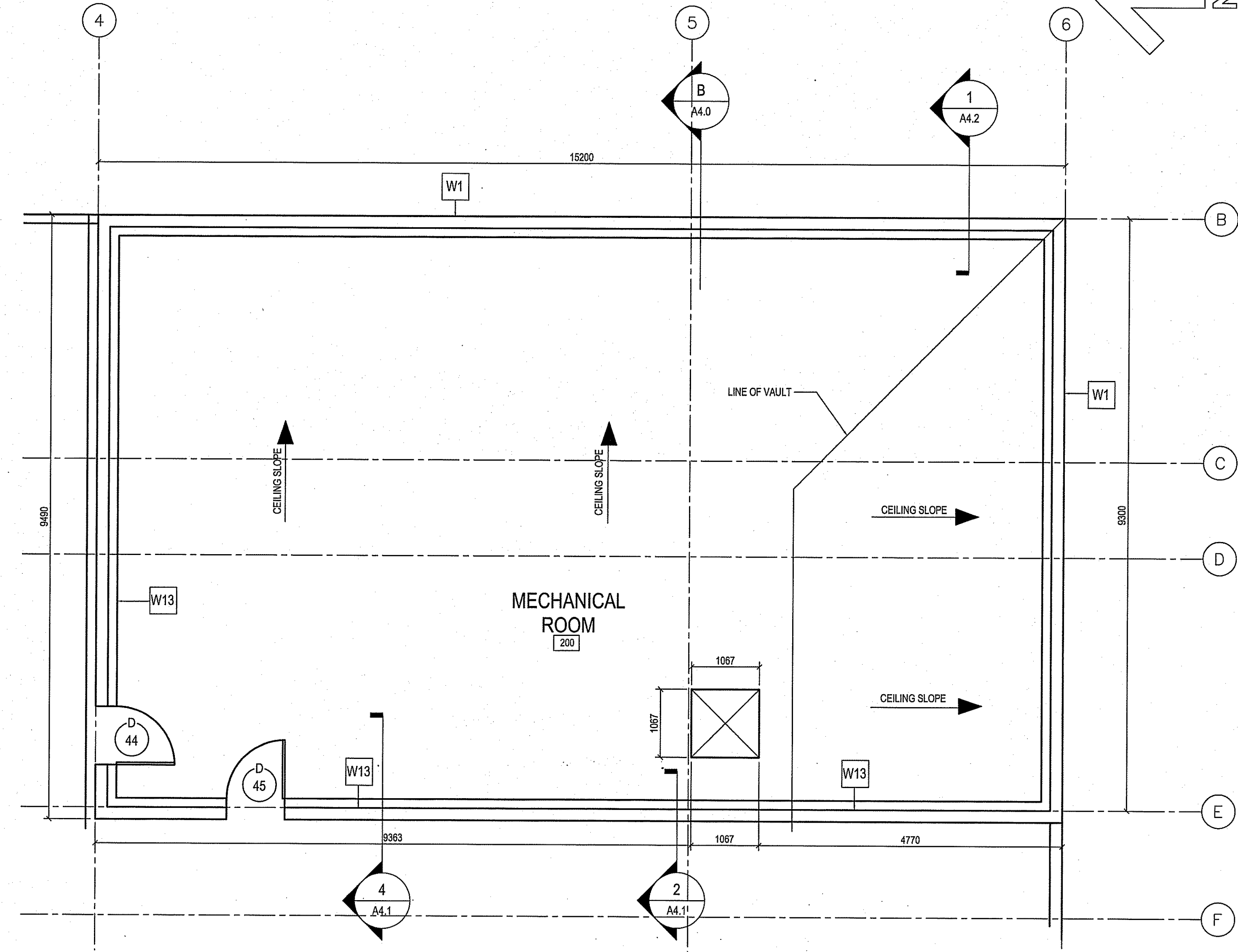
TENDER
A2.3
 REVISION #: 00
 JOB NO.: 13-168-01-47



NOTE:
 1. IF LOCATION OF SUMP PIT IS NOT AT THE LOWEST POINT ABOVE THE BEDROCK INSTALL SECOND SUMP PIT AT LOCATION SHOWN. FINAL LOCATION OF SUMP PIT TO BE SITE DETERMINED AFTER EXCAVATION



1 ROOF PLAN
SCALE: 1:100



2 UPPER MECHANICAL ROOM PLAN
SCALE: 1:50

THIS DRAWING MUST NOT BE SCALED.
THE GENERAL CONTRACTOR SHALL VERIFY ALL DIMENSIONS, DATUMS AND LEVELS PRIOR TO COMMENCEMENT OF WORK AND IS SOLELY RESPONSIBLE FOR REPORTING ANY DISCREPANCY OR OMISSION TO CANTEC SERVICES LTD. IMMEDIATELY.
THIS DRAWING IS THE EXCLUSIVE PROPERTY OF CANTEC SERVICES LTD. AND CAN BE REPRODUCED ONLY WITH THE PERMISSION OF CANTEC SERVICES LTD. IN WHICH CASE THE REPRODUCTION MUST BEAR THEIR NAME AS THE ENGINEERING/DRAFTING FIRM.

Neil Cooper Architect Inc.
10-395 Berry Street, Winnipeg, Manitoba R3J 1N6

ENGINEERING AND DRAFTING
1848 MAIN STREET, WINNIPEG, MANITOBA

REV.#	REVISION	DATE (Y/M/D)	BY
B	ISSUED FOR TENDER	14/06/10	RS
A	ISSUED FOR PERMITS	14/06/10	RS
A	ISSUED FOR 35% REVIEW	14/02/11	RS
A	ISSUED FOR 35% REVIEW	14/02/11	RS

SEALED BY:

PROJECT TITLE: FACILITY BUILDING
SHEET TITLE: ROOF AND UPPER MECHANICAL ROOM PLAN
DATE (Y/M/D): 13/12/07
SCALE: AS NOTED
LOCATION: ISLAND LAKE, MANITOBA

DESIGNED BY: NC
DRAWN BY: RS

TENDER
A2.4
REVISION #: 00
JOB NO.: 13-168-01-47