



Q&A #2

Date: June 25, 2014

Project: 01B46-14-0040- Fire Stopping Materials and Fire Damper installation in fire Rated Separations

Bidders must make sure that their bids are based on the latest version of the tender documents published and take into consideration the following amendments and information, including any information provided on amendments or Q&As previously published for this project.

Bidders that do not comply with this requirement will be discarded.

Please note: In order to provide the integrity of the questions that AAFC has received from bidders, you will find in this document the questions in the language that they were asked.

Questions and answers:

Q1. We would like to confirm whether an "Agreement to Bond" is required to be submitted with this tender or not?(in the past, on all tenders we have been involved with here, an agreement to bond was required – for this tender we can't seem to find this info and just want to be sure here – note; we do see under the "FORMS" section, samples of Performance and Labour and Material Bond Forms that appear to be required after project is awarded?)

A1. Yes you will have to provide us a bid security with your tender as indicated on Appendix A, General instructions to bidders, GI07, Bid security Requirements as followed:

"The Bidder shall submit bid security with the bid in the form of a bid bond or a security deposit in an amount that is equal to not less than 10 percent of the bid amount. Applicable Taxes shall not be included when calculating the amount of any bid security that may be required. The maximum amount of bid security required with any bid is \$2,000,000.00."

Q2. During the site visit on June 16, it was discussed and noted that there are existing actuated dampers in the return air ductwork (right at lab walls where the new fire dampers have to be installed). These existing dampers are not addressed anywhere in the tender documents. This concern was to be answered along with the other questions on Q&A #1 document. Saying that, are we going to receive any further direction/specs/etc on how these existing dampers relate to this tender as they can't remain in their present location?

If they need to be relocated, we need to know where they can be relocated to, the type/make of existing damper as the existing damper configurations may not fit in another location as the duct size changes and access is limited, so new dampers may be required. Advise.

A2. Please refer to the additional information attached to my Q &A #2. You will find two additional documents to answer your questions.

Drawings, SKA 1:

It is showing the installation of new fire damper, retaining angles and sleeve. Note that SKA.1 also refers to the relocation if existing motorized dampers to ensure no conflicts between the existing motorized damper and the sleeve/duct connection.

Specifications:

See new section 01 21 00 in regards to cash allowances. **Please make sure that the amount of the cash allowances is included in your Bid.**

Q3. Referring to section 23 33 16, in relation to item 2.1.5.1 and .2 – How do we install the requested 40 x 40 x3 mm inverted retaining angle as noted here when the flange on the existing grill is only 19 mm (3/4")? (also note that we may need a min of a 50 x 50 x 3 retaining angle and possible larger to meet code).



From how we understand this presently, it would be impossible **to not have** the retaining angle exposed, as it would be larger than the existing grill dimensions (as requested in 2.1.5.2) please advise

A3. Refer to the addendum item below.

Modification made to section 22 33 16, PART 2, PRODUCTS, 2.1 Fire Dampers, sub section .5, as followed:

Replace:

- .5 40 x 40 x 3 mm retaining angle iron frame, on full perimeter of fire damper, on both sides of fire separation being pierced.
 - .1 Retaining angle on interior of room should be inverted in order to accommodate the existing grille.
 - .2 Exposed face of retaining angle should not exceed the dimensions of the existing grill.

By:

- .5 40 x 40 x 1.6mm (1 ½" x 1 ½" x 16 ga.) galvanized retaining angle on full perimeter of fire damper, on both sides of fire separation being pierced.
 - .1 Retaining angle on interior (laboratory side) of room should be inverted in order to accommodate the existing return air grille
 - .2 Interior retaining angle to be primed and painted. Colour to be approved by consultant.

ALL OTHER TERMS AND CONDITIONS REMAIN UNCHANGED

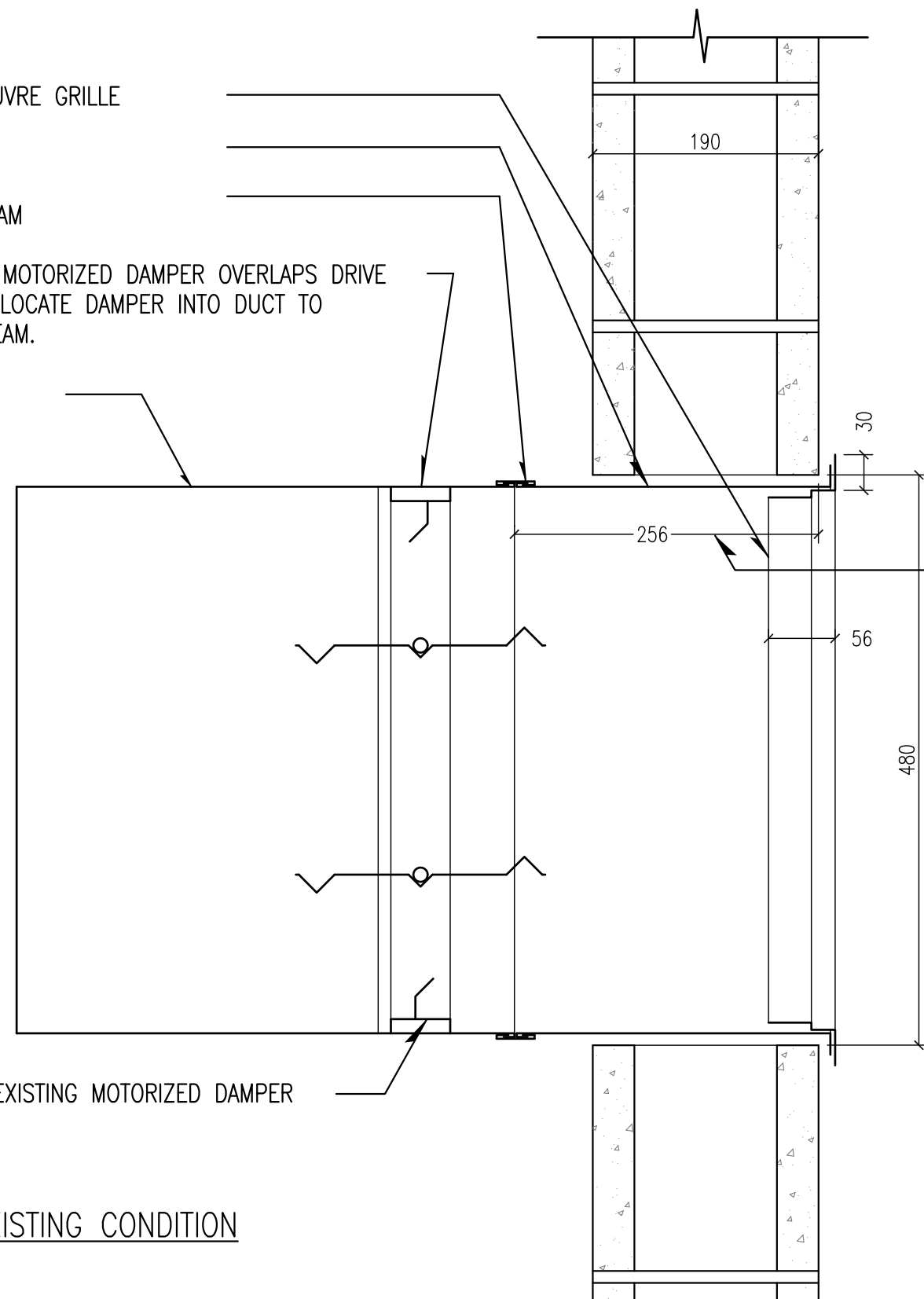
DUAL LOUVRE GRILLE

SLEEVE

DRIVE SEAM

NOTE: IF MOTORIZED DAMPER OVERLAPS DRIVE SEAM, RELOCATE DAMPER INTO DUCT TO CLEAR SEAM.

DUCT



NOTE: LENGTH OF EXISTING SLEEVE IS ONLY APPROXIMATE. DIMENSINO VARY.

NOTE: MOST DUCT OPENINGS ARE BETWEEN 450 TO 460 MM IN HEIGHT. ALL DUCT WIDTH AND HEIGHT MUST BE SITE MEASURED.

EXISTING MOTORIZED DAMPER

EXISTING CONDITION

EX DUAL LOUVRE GRILLE

40mm x 40mm x 16 ga. RETAINING ANGLES

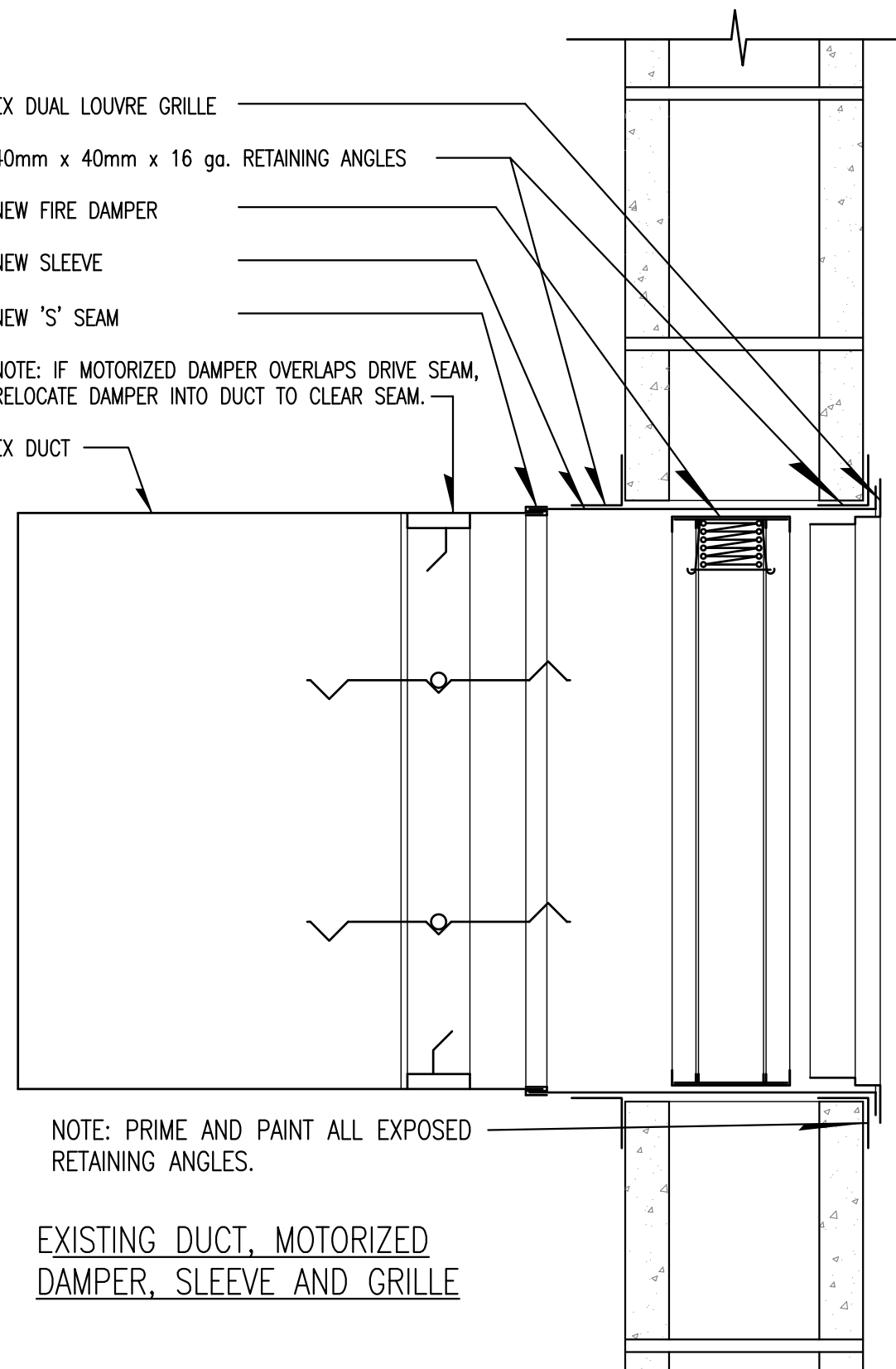
NEW FIRE DAMPER

NEW SLEEVE

NEW 'S' SEAM

NOTE: IF MOTORIZED DAMPER OVERLAPS DRIVE SEAM, RELOCATE DAMPER INTO DUCT TO CLEAR SEAM.

EX DUCT



NOTE: PRIME AND PAINT ALL EXPOSED RETAINING ANGLES.

EXISTING DUCT, MOTORIZED DAMPER, SLEEVE AND GRILLE



Agriculture and Agri-Food Canada
Southern Crop Protection and Food Research Centre
London, Ontario

Agriculture et Agroalimentaire Canada
Centre de recherches sur la phytoprotection et les aliments
L'ondon, Ontario

**FIRE DAMPER
INSTALLATION**

SKA.01

Donald Ardiel Architect
London, Ontario

Part 1 General

1.1 CASH ALLOWANCES

- .1 Include in Contract Price specified cash allowances.
- .2 Cash allowances, unless otherwise specified, cover net cost to Contractor of services, products, construction machinery and equipment, freight, handling, unloading, storage, installation, and other authorized expenses incurred in performing Work.
- .3 Contract Price, and not cash allowance, includes Contractor's overhead and profit in connection with such cash allowance.
- .4 Contract Price will be adjusted by written order to provide for excess or deficit to each cash allowance.
- .5 Where costs under a cash allowance exceed amount of allowance, Contractor will be compensated for excess incurred and substantiated plus allowance for overhead and profit as set out in Contract Documents.
- .6 Include progress payments on accounts of work authorized under cash allowances in Consultant's monthly certificate for payment.
- .7 Prepare schedule jointly with Departmental Representative and Contractor to show when items called for under cash allowances must be authorized by Consultant for ordering purposes so that progress of Work will not be delayed.
- .8 Amount of each allowance, for Work specified in respective specification Sections is as follows:
 - .1 Include allowance of \$ 16,000 for the relocation of existing motorized dampers and associated controls and actuators.

Part 2 Products

2.1 NOT USED

- .1 Not Used.

Part 3 Execution

3.1 NOT USED

- .1 Not Used.

END OF SECTION