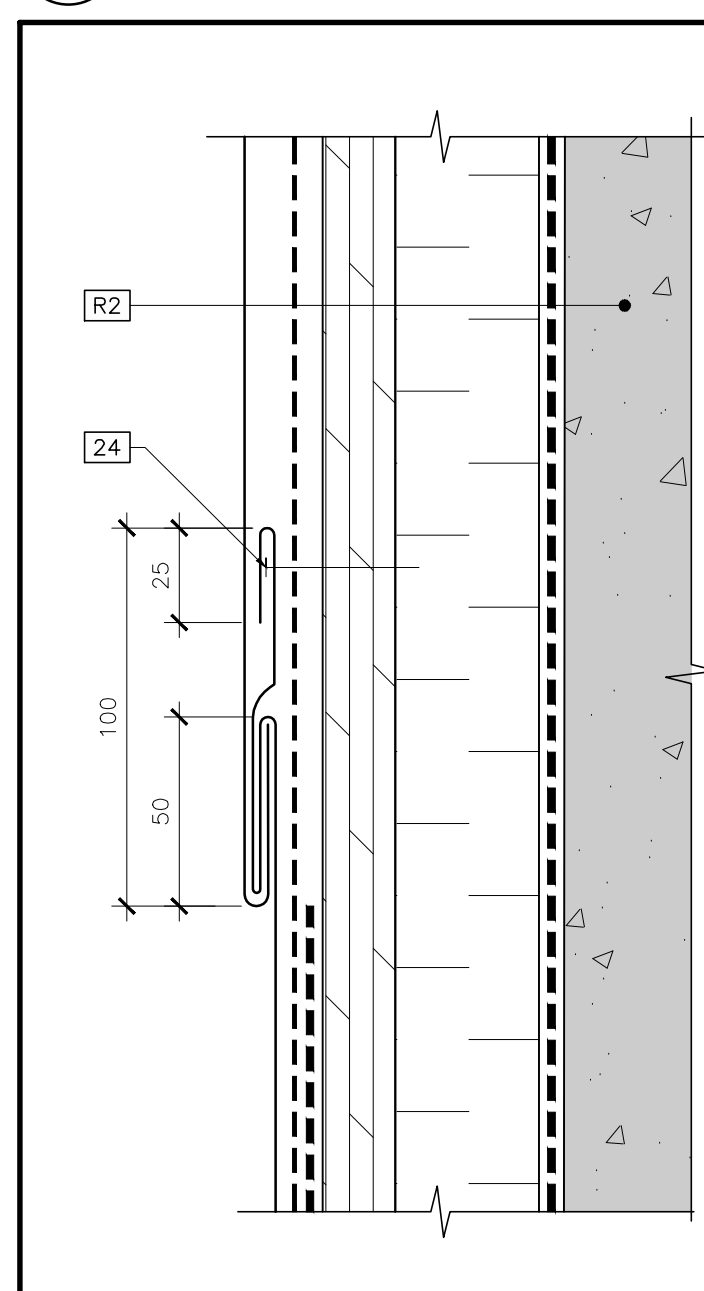
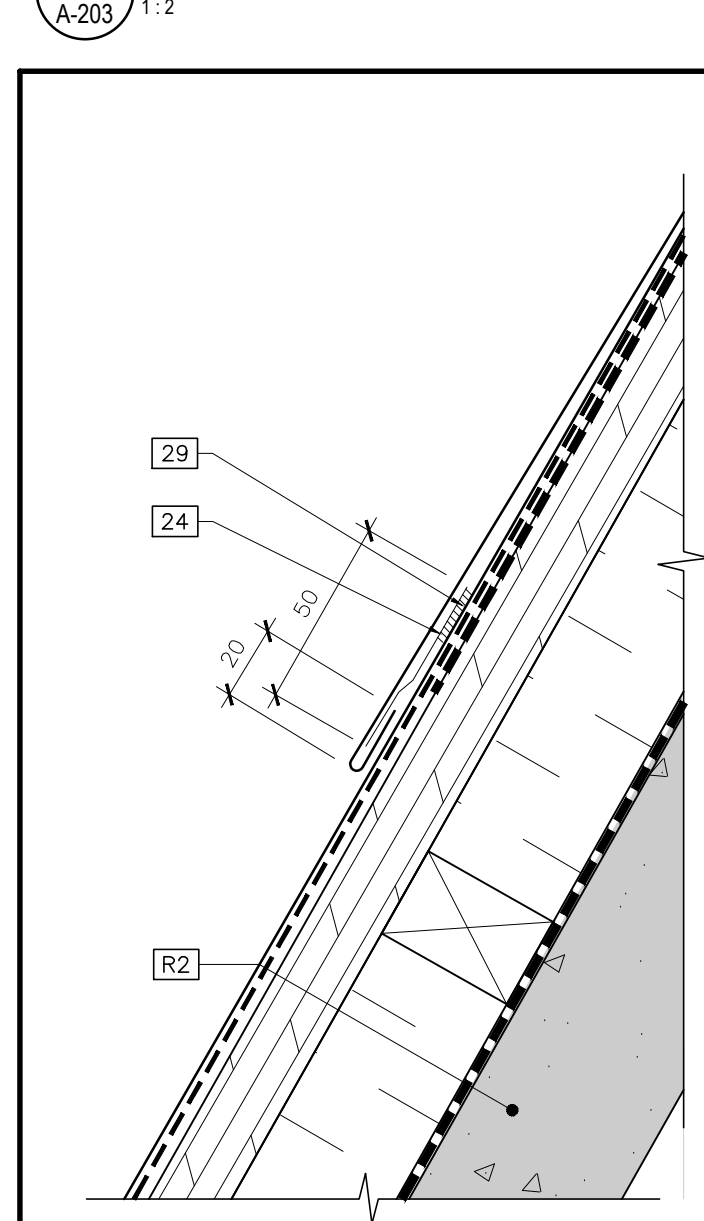


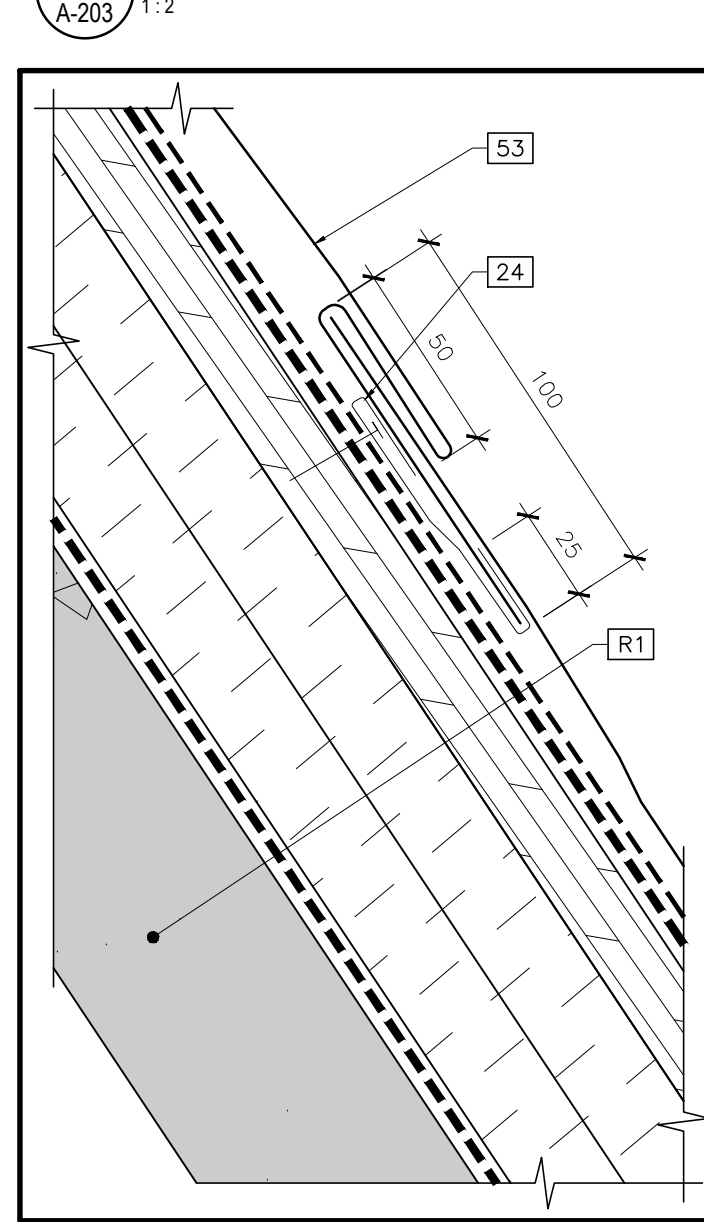
CONST.: TYP. DETAIL SECTION AT CHIMNEY AND SLOPED ROOF  
A-203 1:5



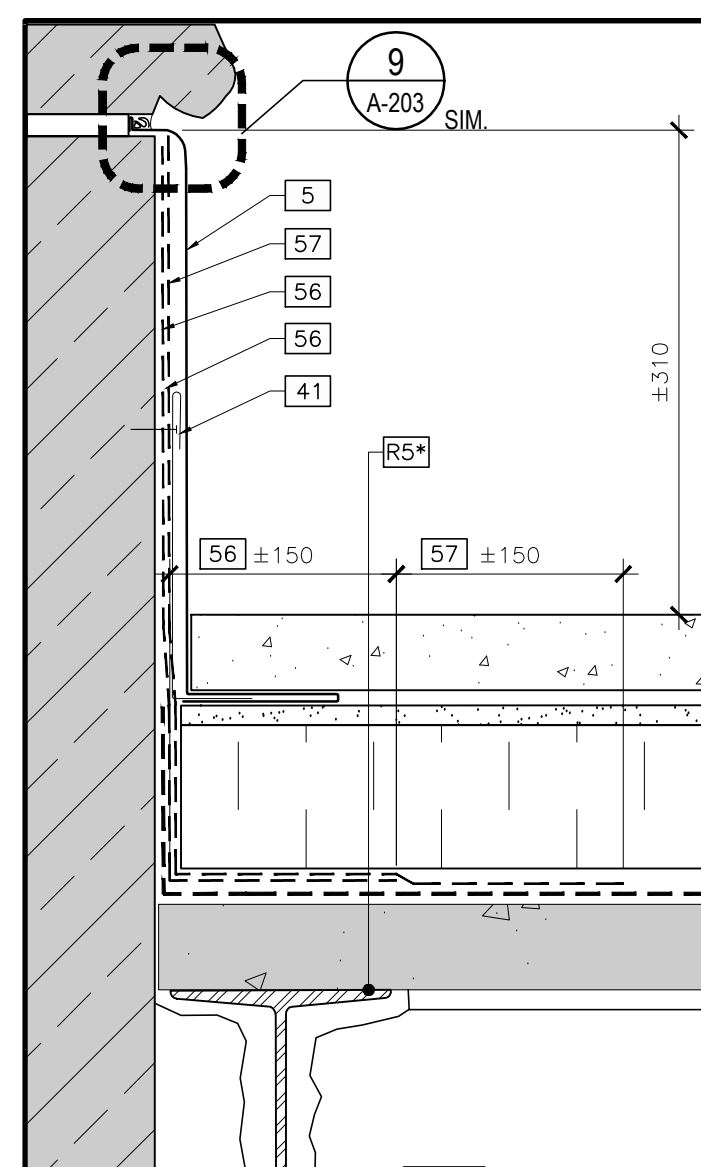
CONST.: TYP. SEAM DETAIL AT CHIMNEY AND SLOPED ROOF  
A-203 1:2



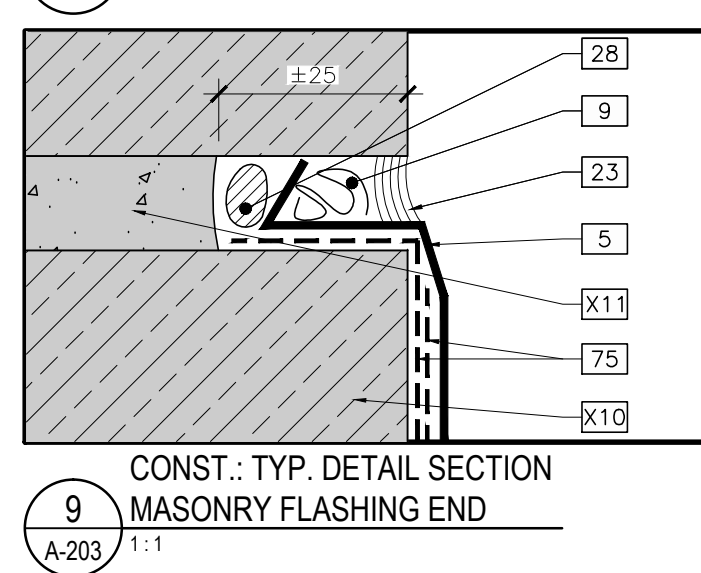
CONST.: TYP. SEAM DETAIL AT CHIMNEY AND SLOPED ROOF  
A-203 1:2



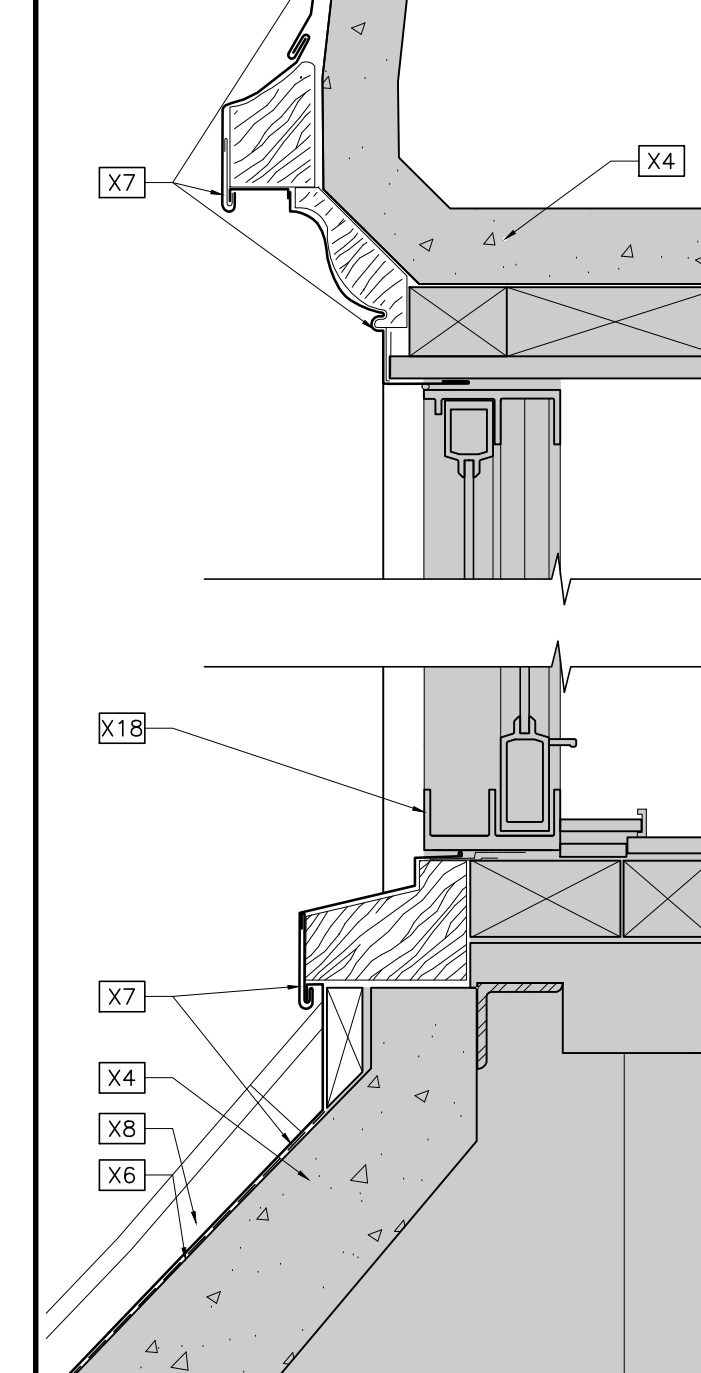
CONST.: TYP. SEAM DETAIL AT CHIMNEY AND SLOPED ROOF  
A-203 1:2



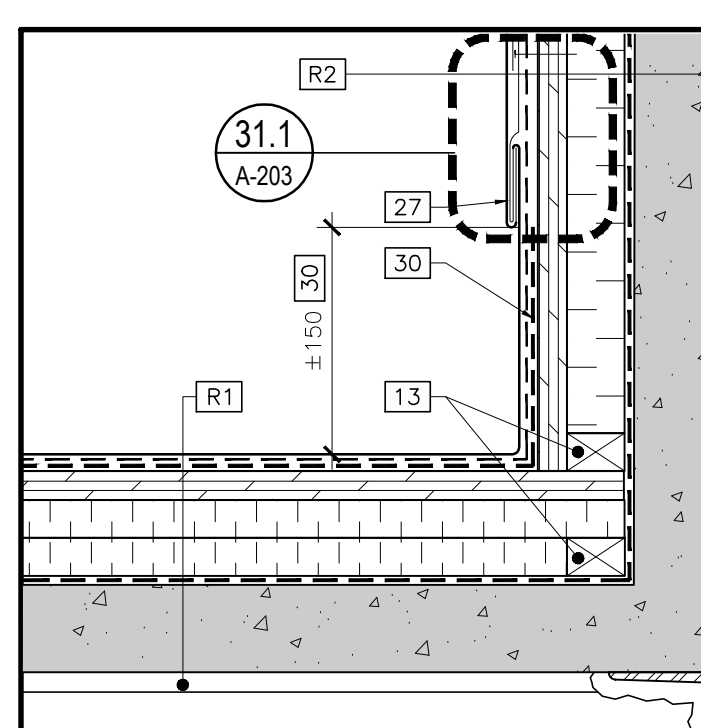
CONST.: TYP. DETAIL SECTION AT CHIMNEY AND SLOPED ROOF  
A-203 1:5



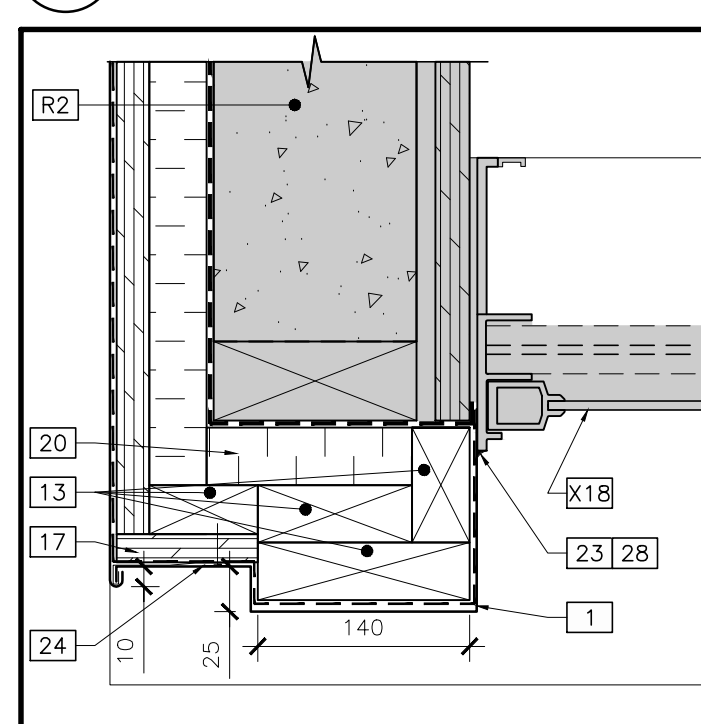
CONST.: TYP. DETAIL SECTION AT CHIMNEY AND SLOPED ROOF  
A-203 1:5



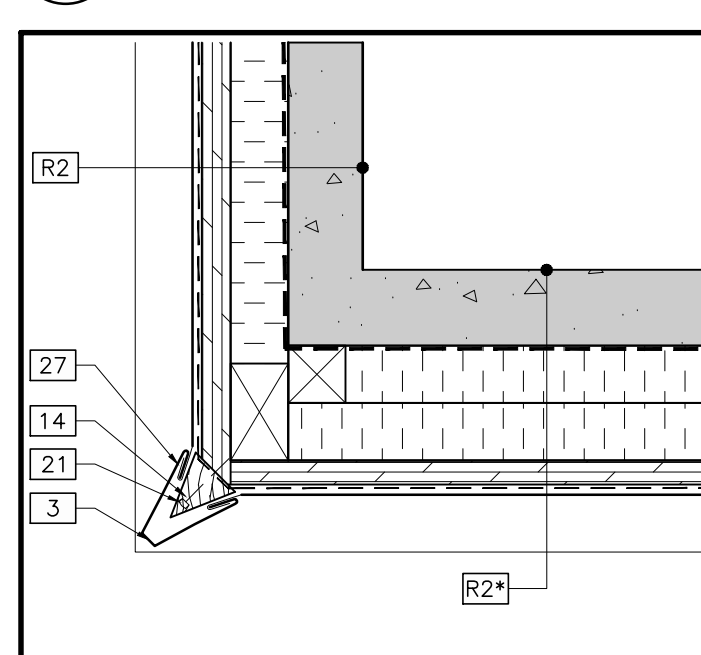
EXIST.: DORMER SECTION  
A-203 1:5



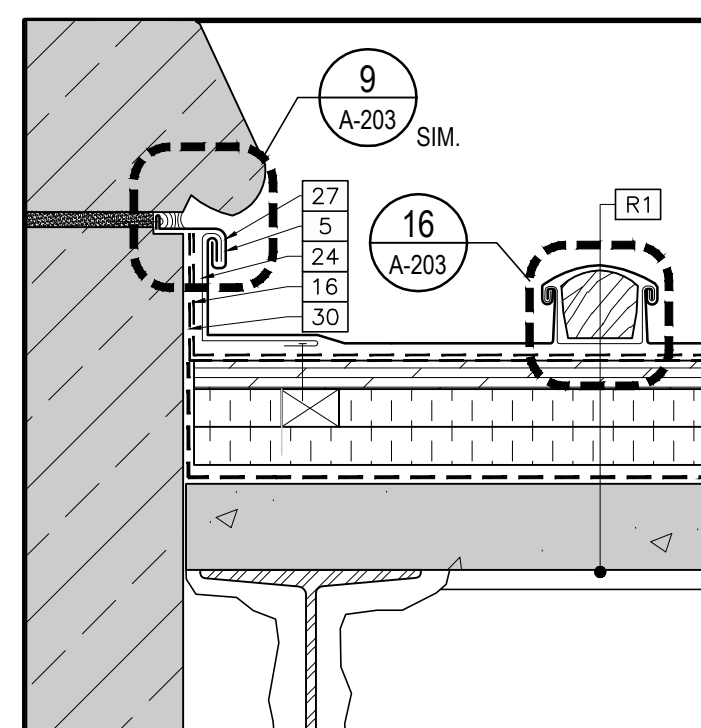
CONST.: TYP. FLAT SEAM DETAIL SLOPED ROOF AND DORMER  
A-203 1:5



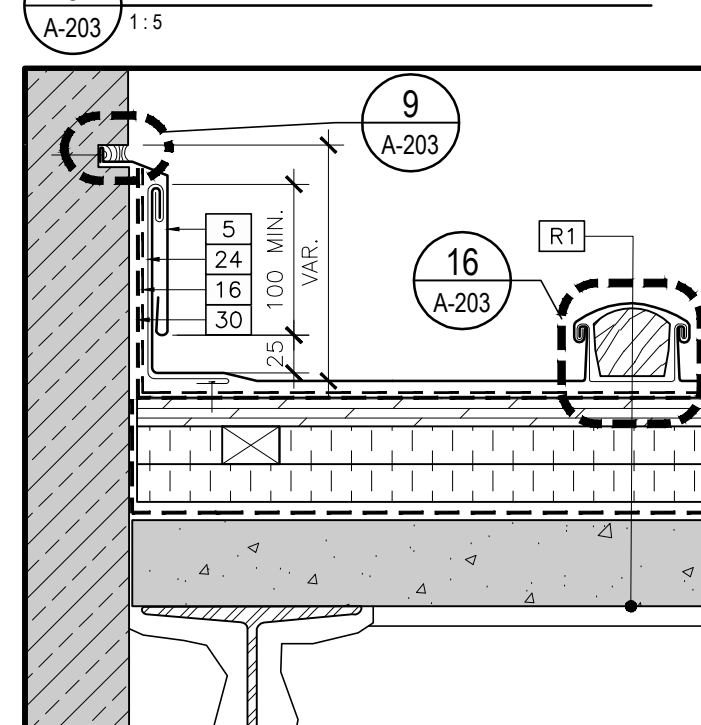
CONST.: TYP. FLAT SEAM DETAIL SLOPED ROOF AND DORMER  
A-203 1:5



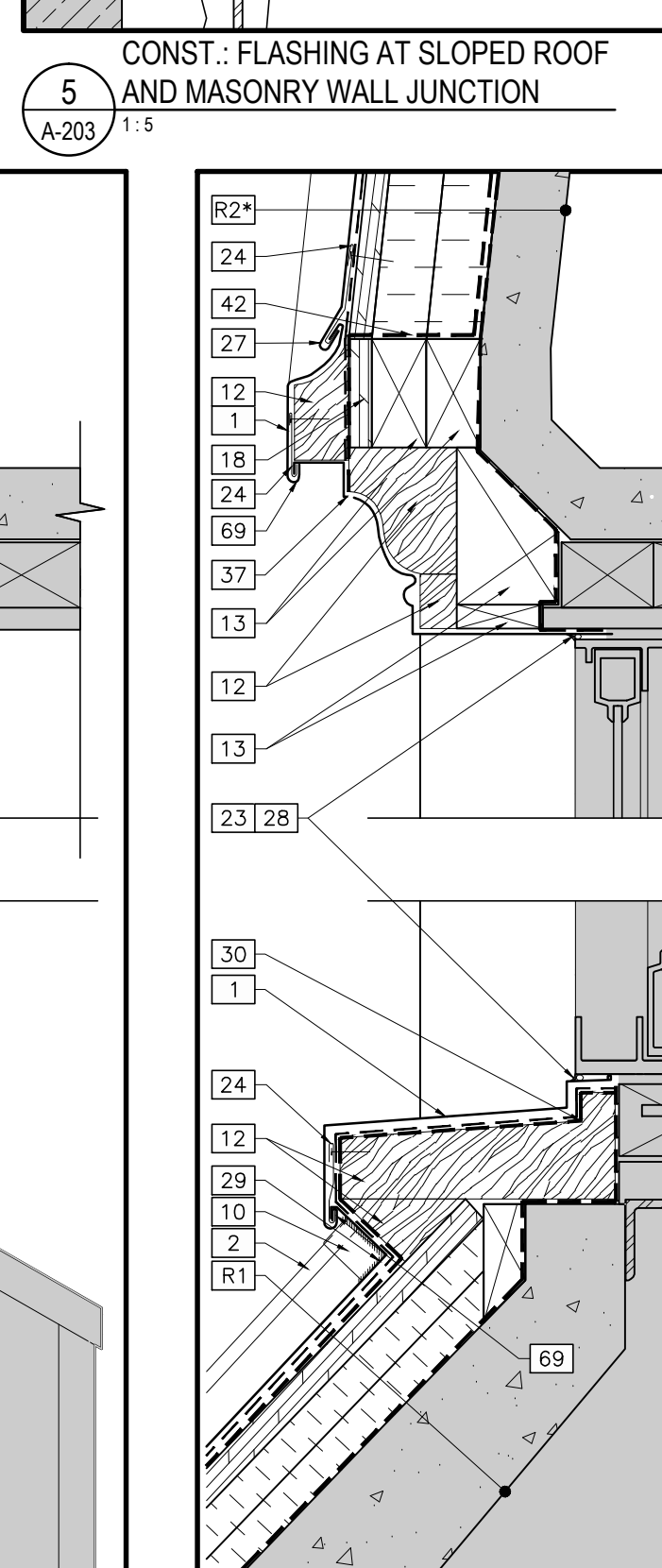
CONST.: TYP. DORMER JAMB DETAIL  
A-203 1:5



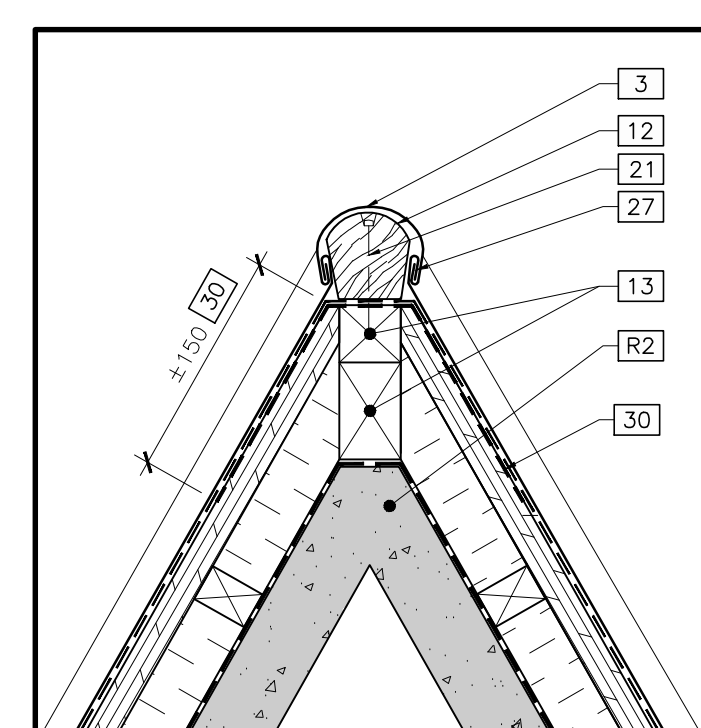
CONST.: TYP. DETAIL SECTION AT CHIMNEY AND SLOPED ROOF  
A-203 1:5



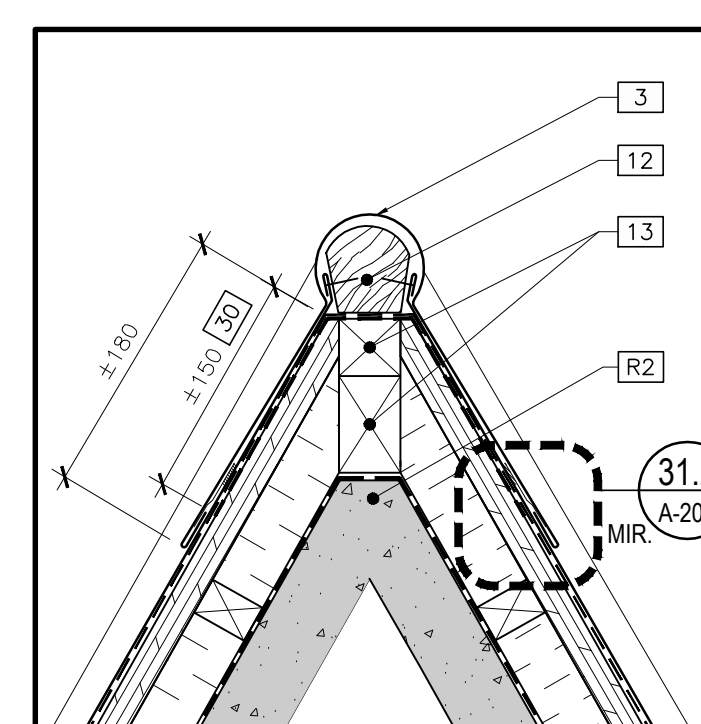
CONST.: FLASHING AT SLOPED ROOF AND MASONRY WALL JUNCTION  
A-203 1:5



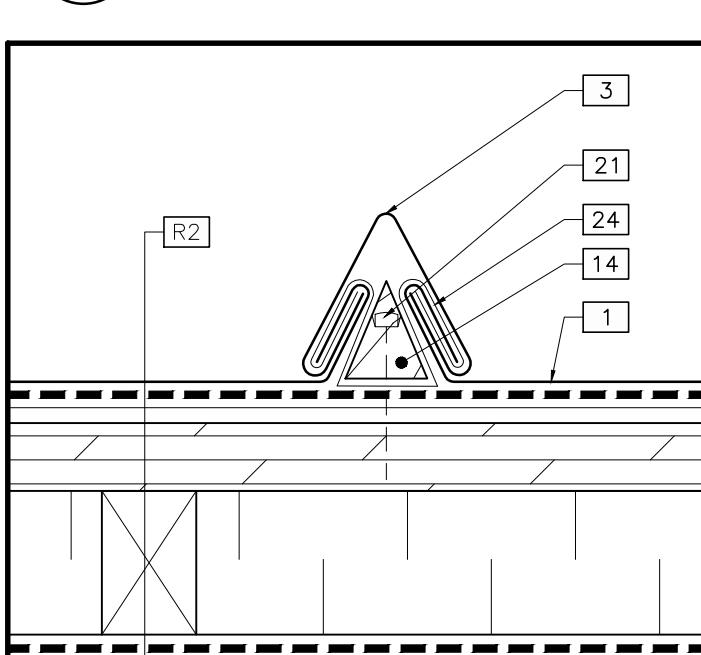
CONST.: TYP. DORMER SECTION  
A-203 1:5



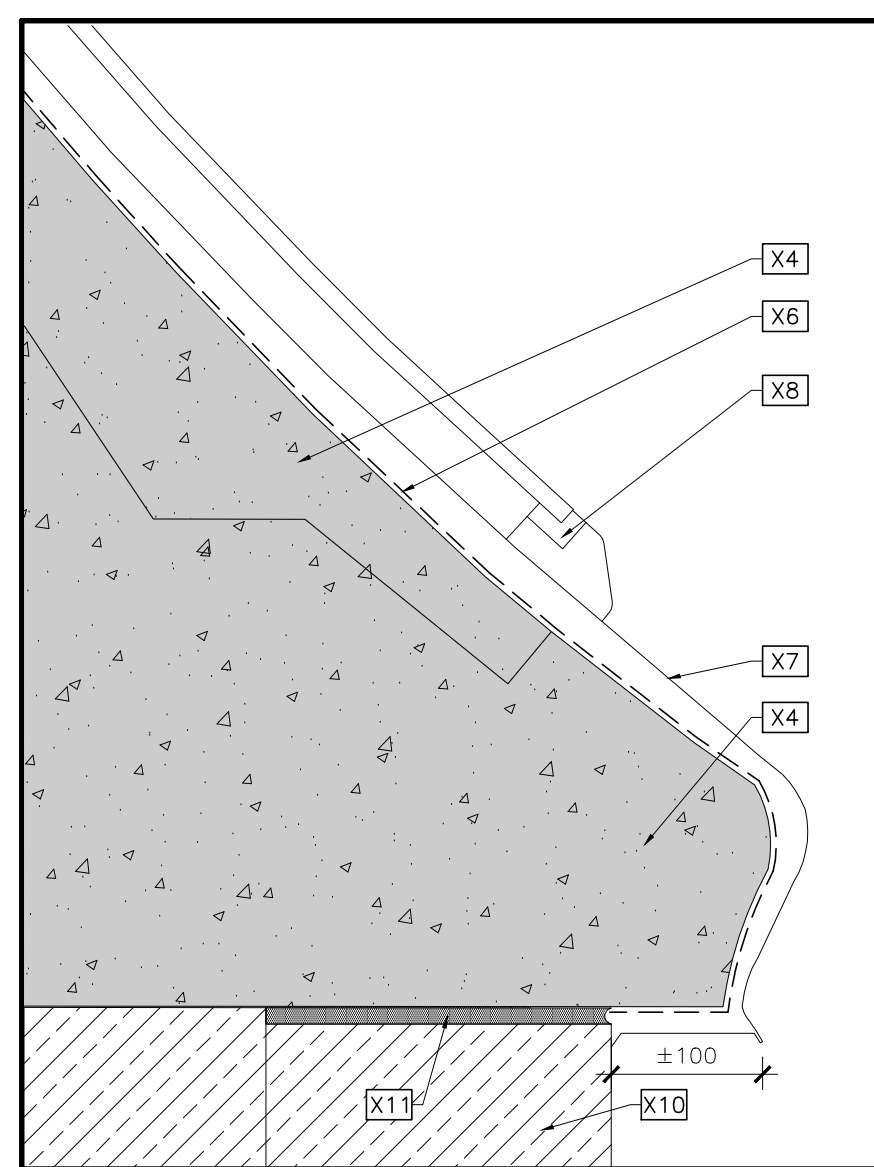
CONST.: TYP. DORMER RIDGE DETAIL  
A-203 1:5



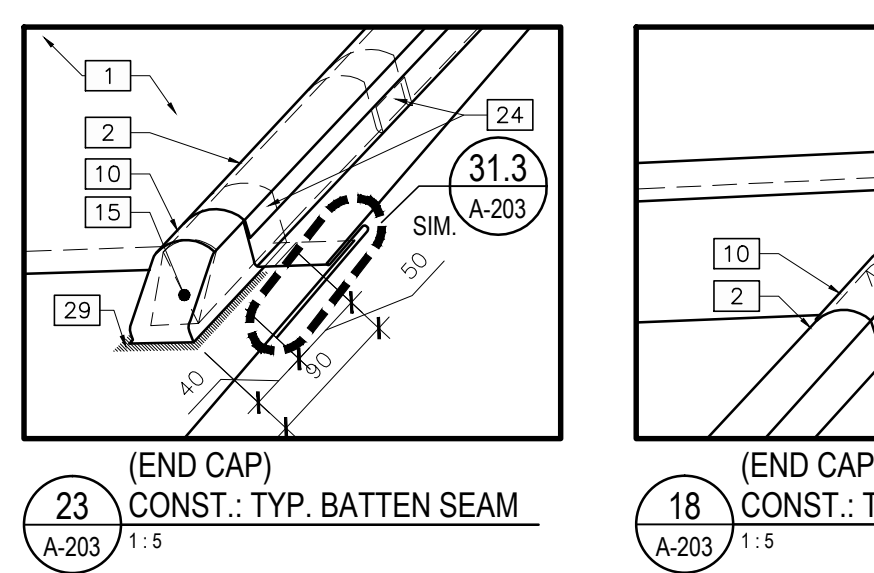
CONST.: TYP. DORMER RIDGE DETAIL  
A-203 1:5



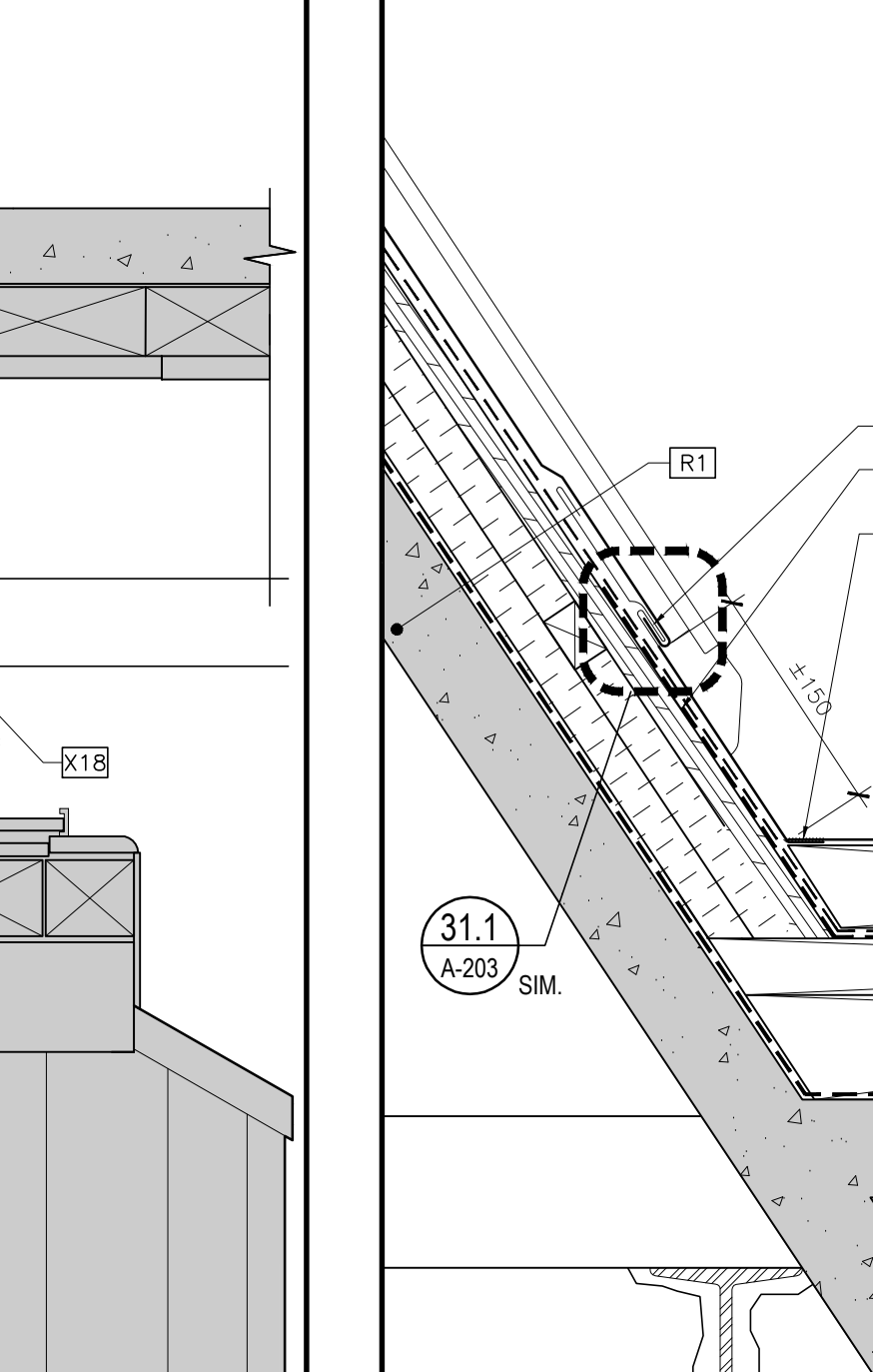
CONST.: TYP. DORMER BATTEN SEAM  
A-203 1:2



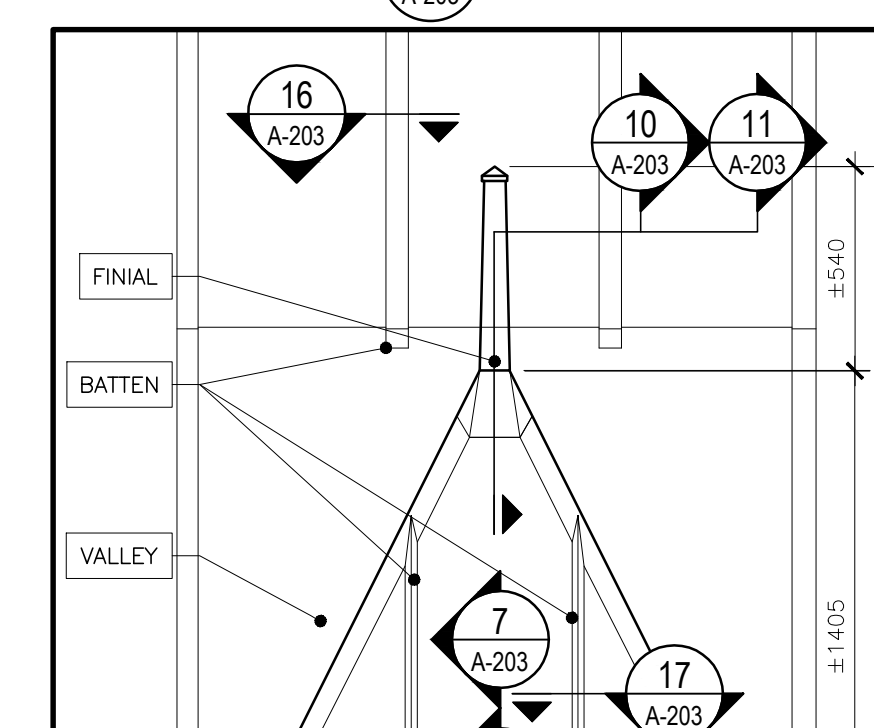
EXIST.: BAY EAVE  
A-203 1:5



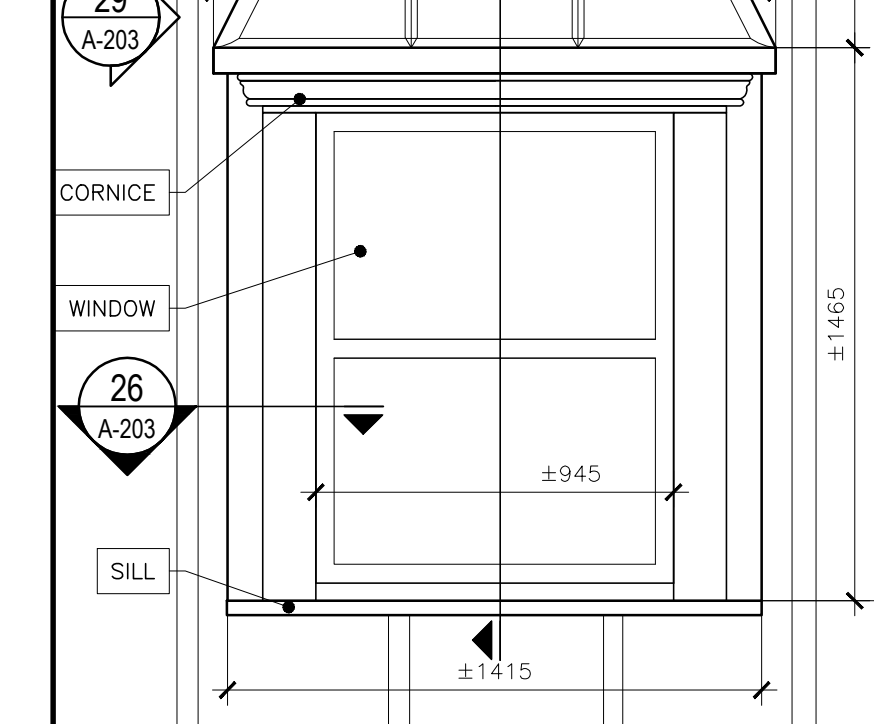
CONST.: BAY EAVE DETAIL, TYP.  
A-203 1:5



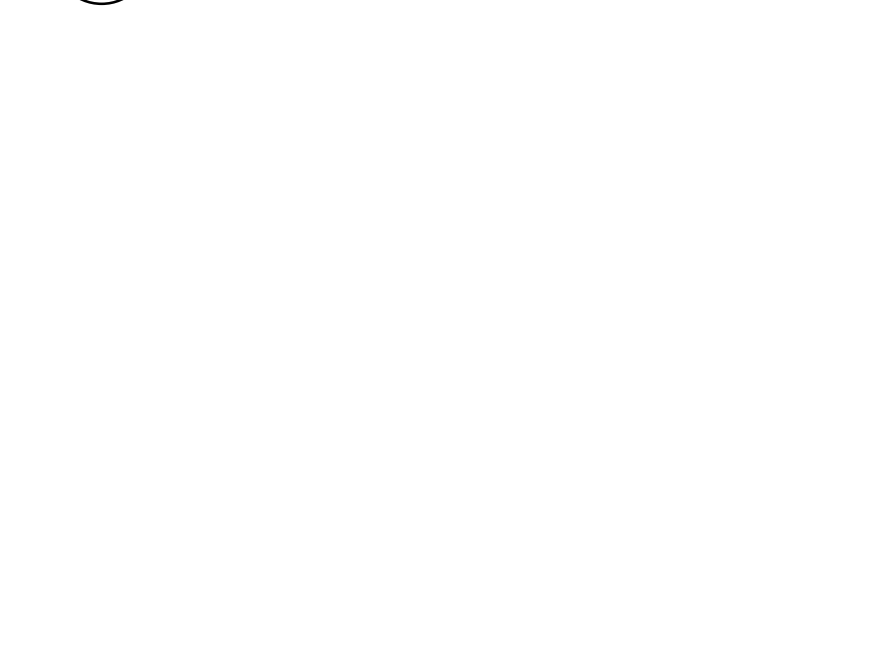
CONST.: TYP. DORMER RIDGE DETAIL AT ROOF JUNCTION  
A-203 1:5



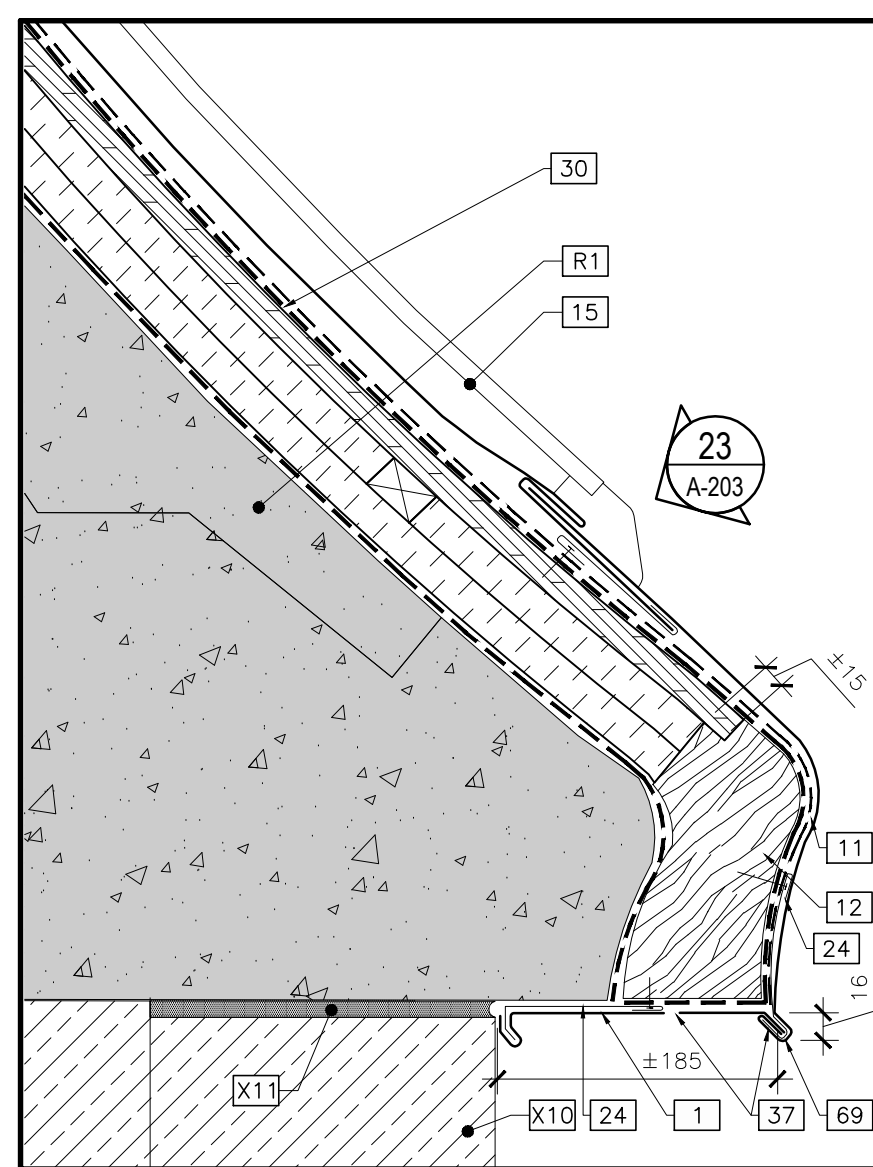
CONST.: TYP. DORMER FINIAL DETAIL  
A-203 1:5



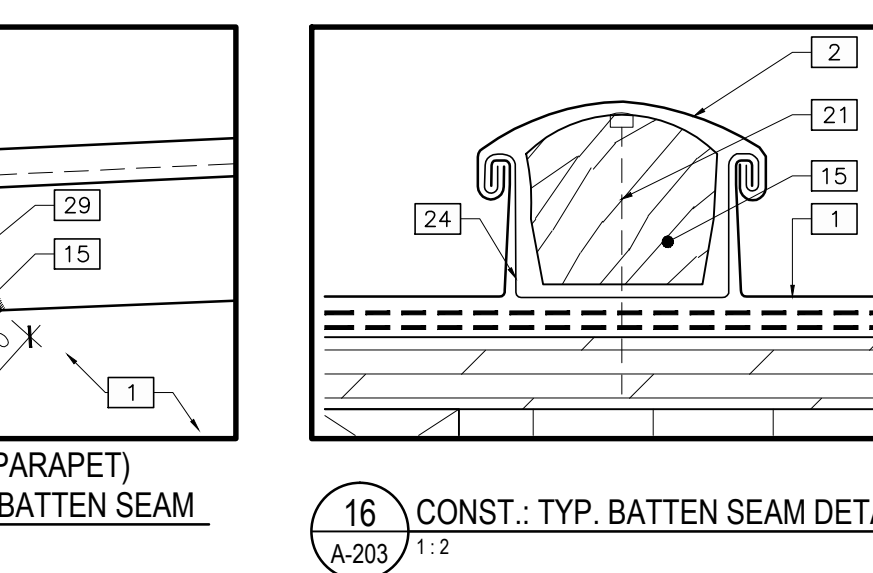
CONST.: TYP. DORMER FINIAL DETAIL  
A-203 1:5



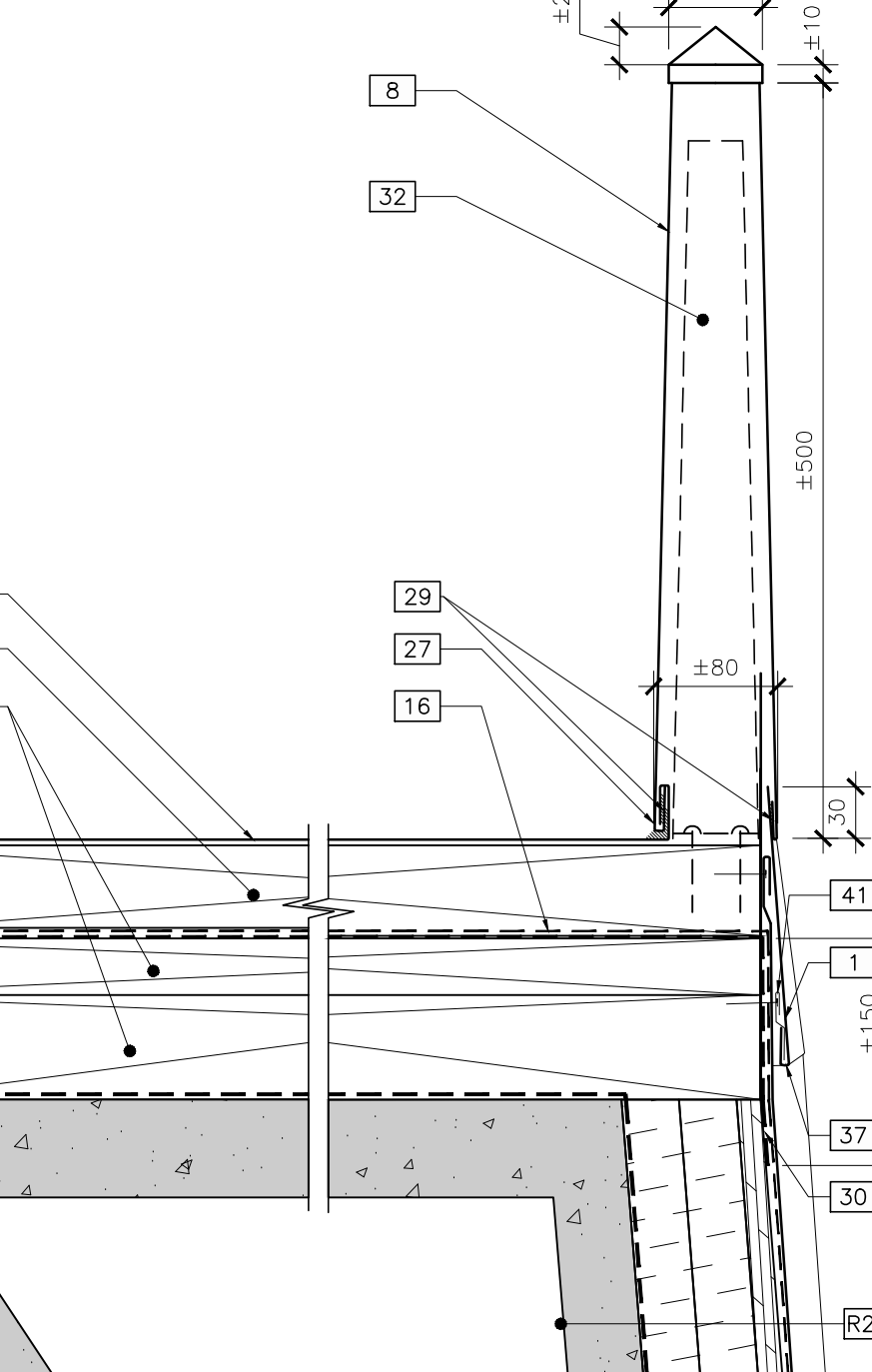
CONST.: TYP. DORMER SIDE ELEVATION  
A-203 1:20



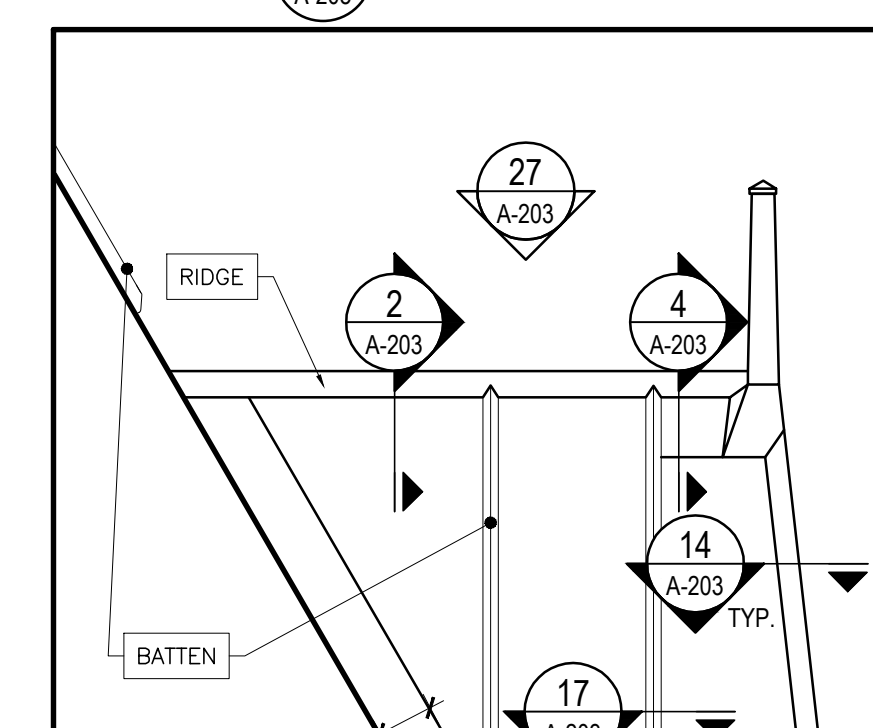
CONST.: BAY EAVE DETAIL, TYP.  
A-203 1:5



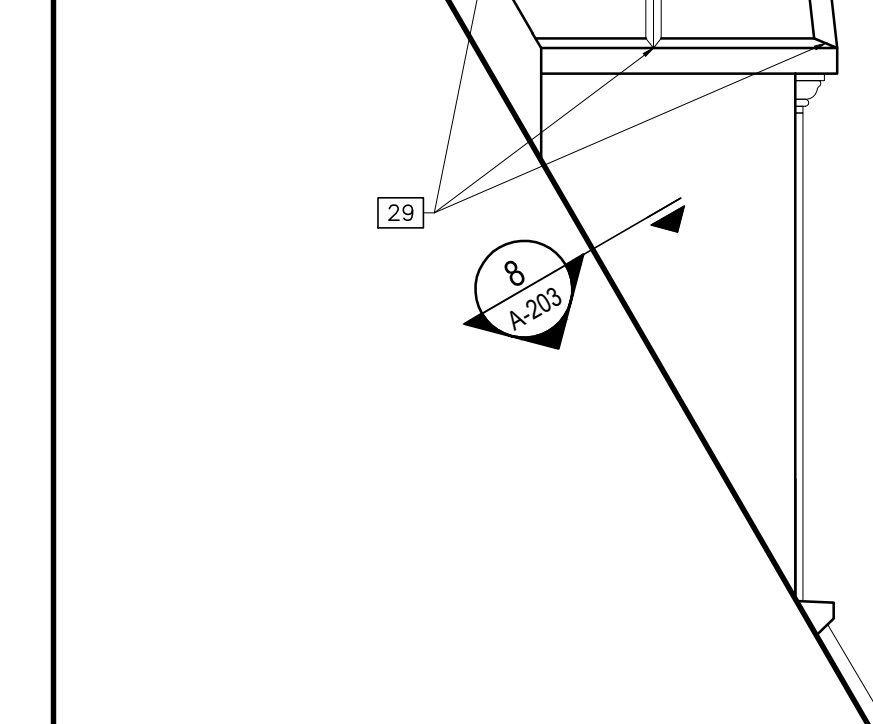
CONST.: TYP. BATTEN SEAM DETAIL  
A-203 1:2



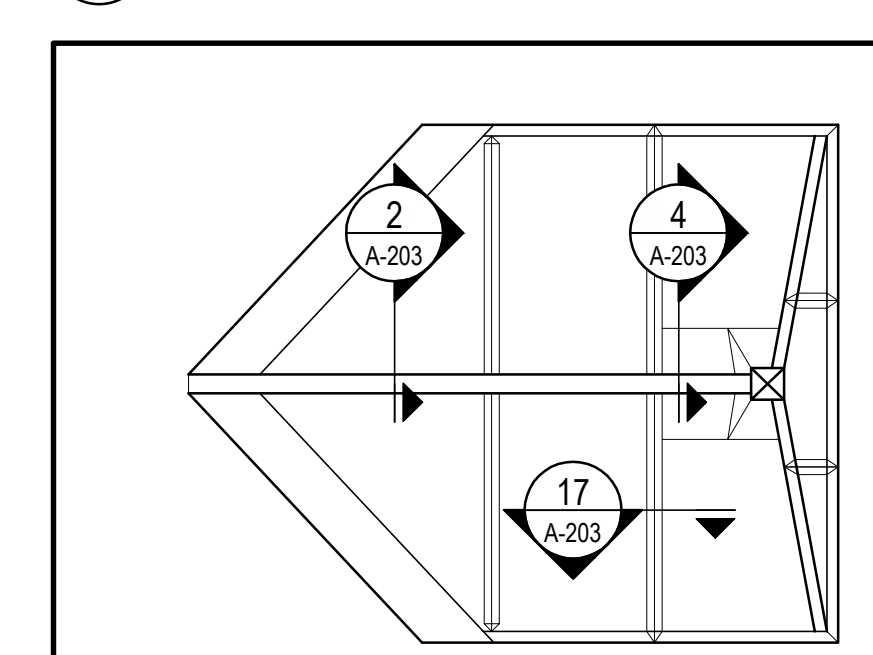
CONST.: TYP. DORMER RIDGE DETAIL AT ROOF JUNCTION  
A-203 1:5



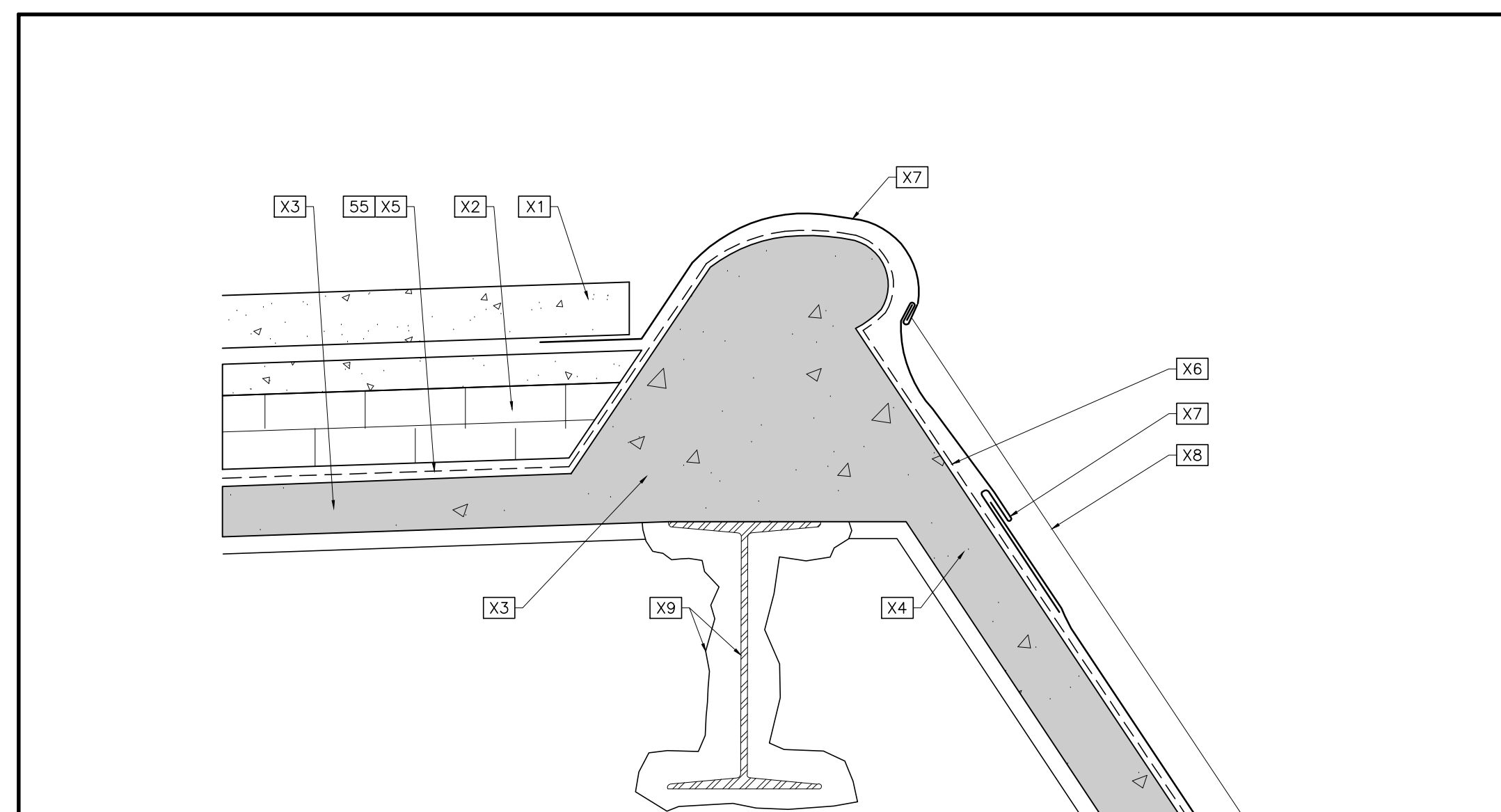
CONST.: TYP. DORMER FINIAL DETAIL  
A-203 1:5



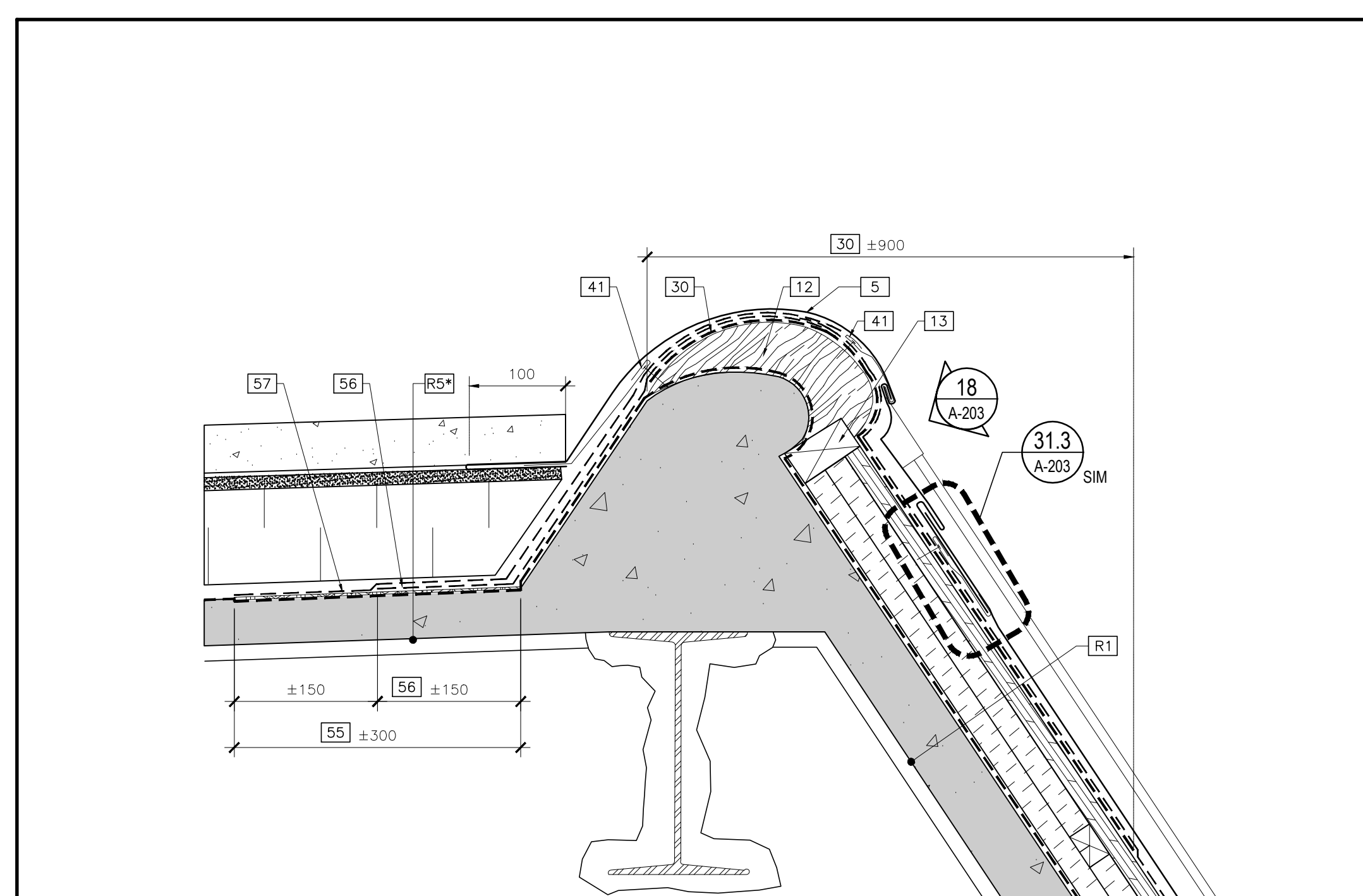
CONST.: TYP. DORMER FINIAL DETAIL  
A-203 1:5



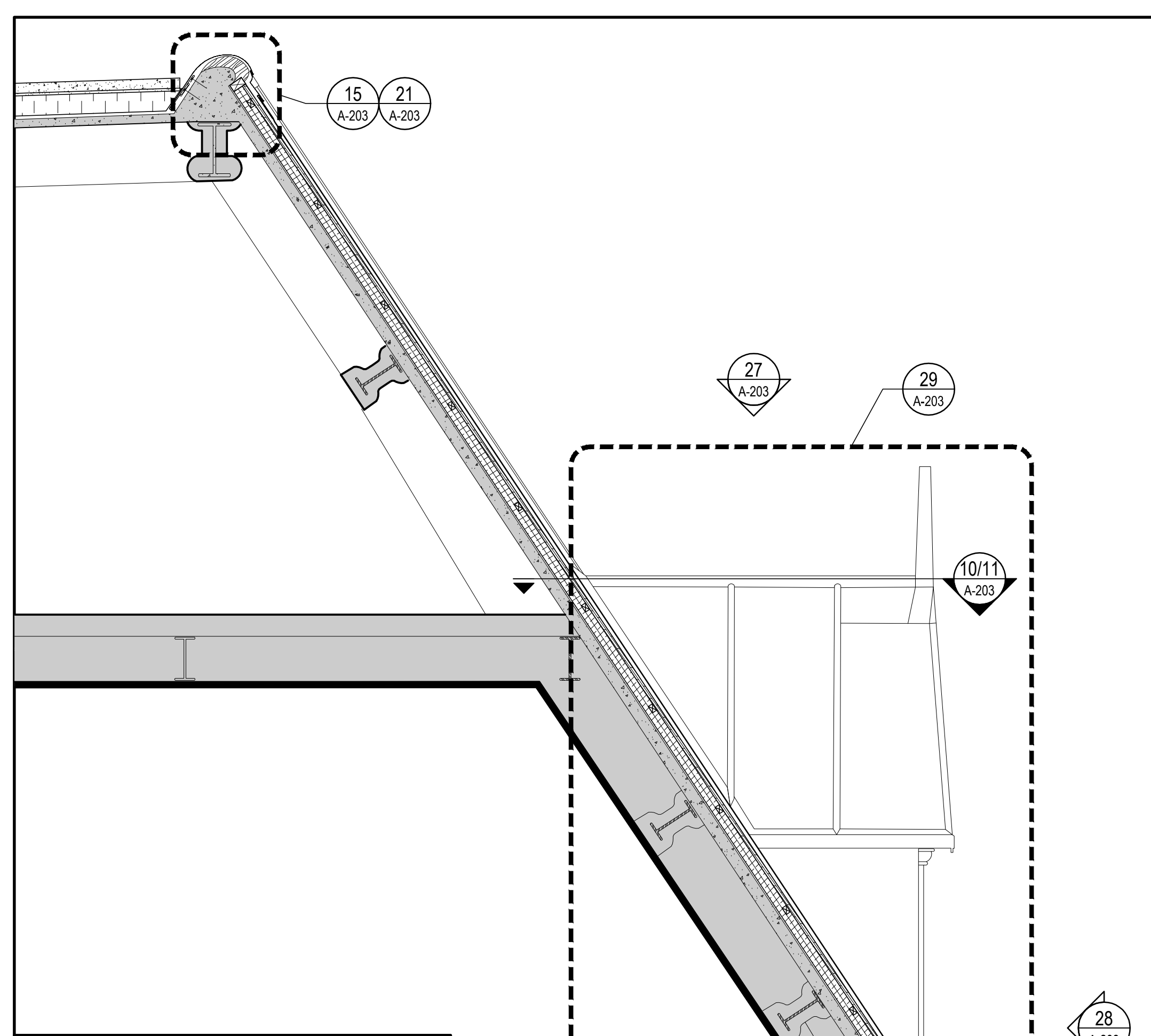
CONST.: TYP. DORMER SIDE ELEVATION  
A-203 1:20



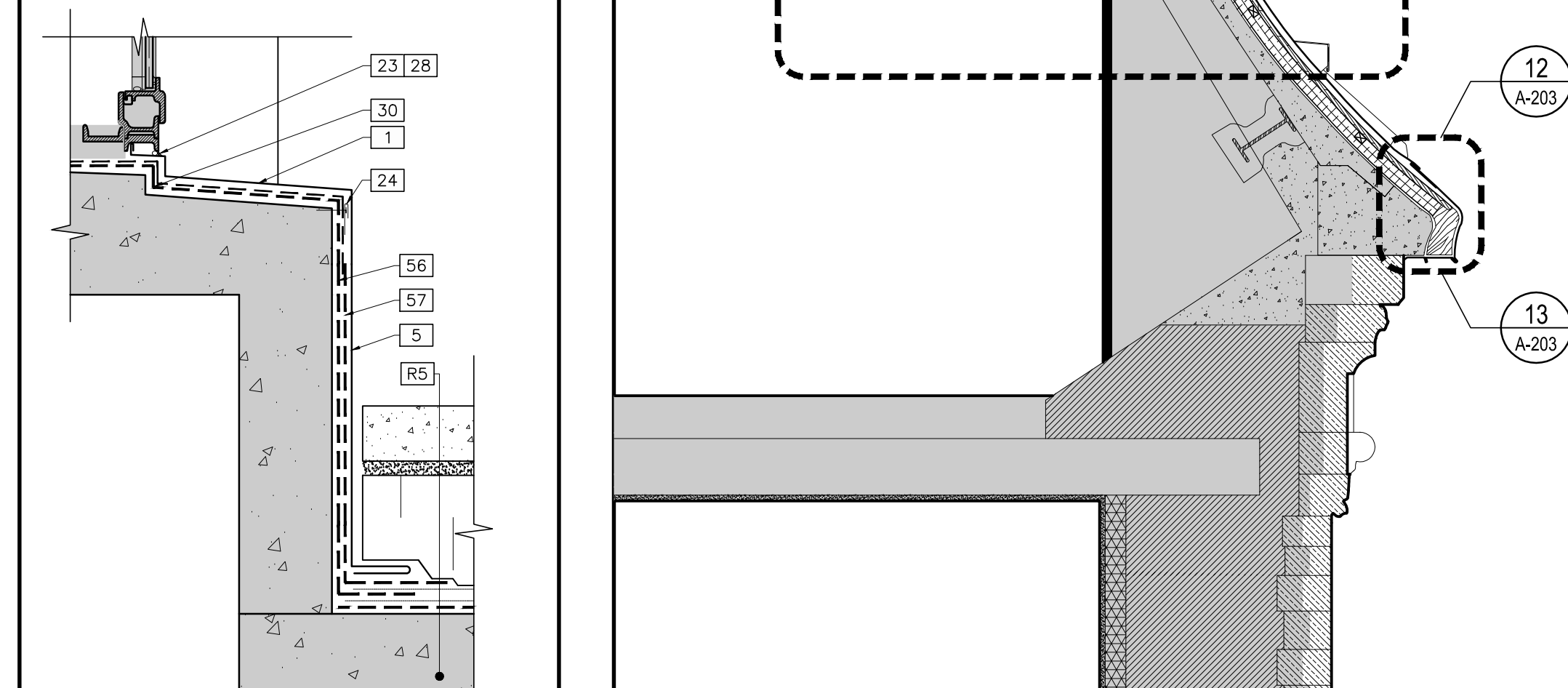
EXIST.: ROOF PARAPET SECTION AT BAY  
A-203 1:5



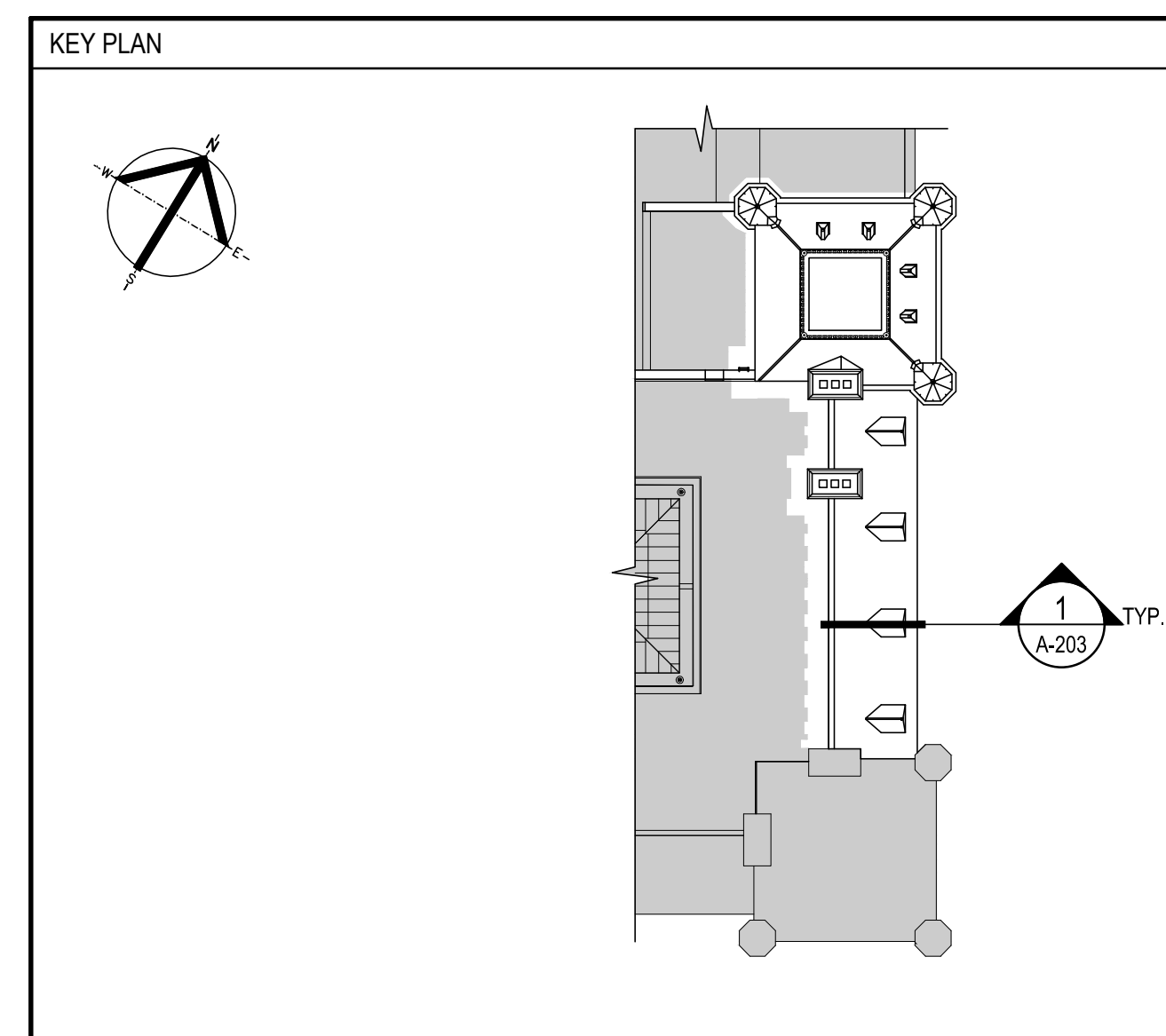
CONST.: TYP. BAY SECTION ROOF PARAPET  
A-203 1:5



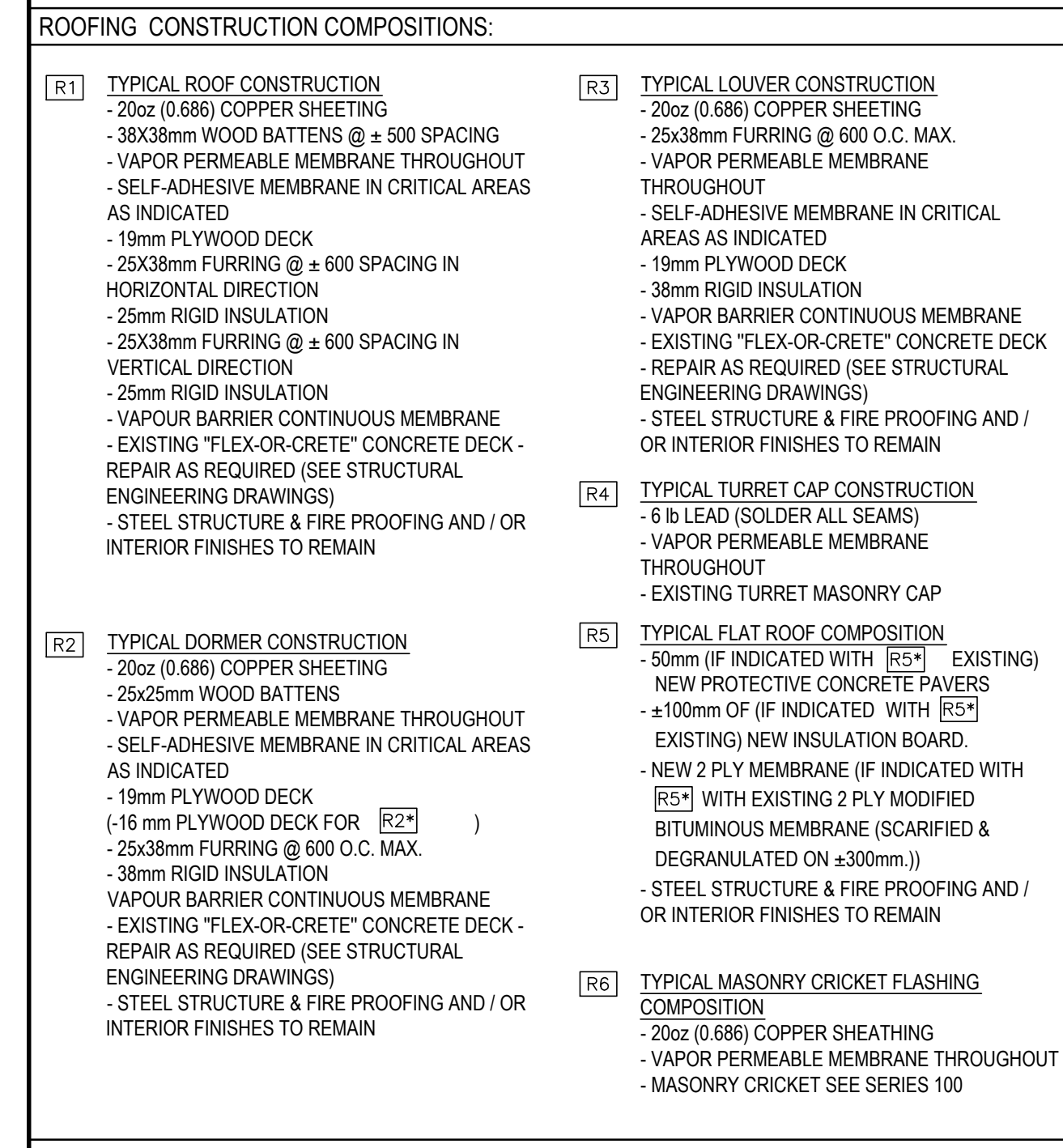
CONST.: TYP. BAY SECTION ROOF PARAPET  
A-203 1:5



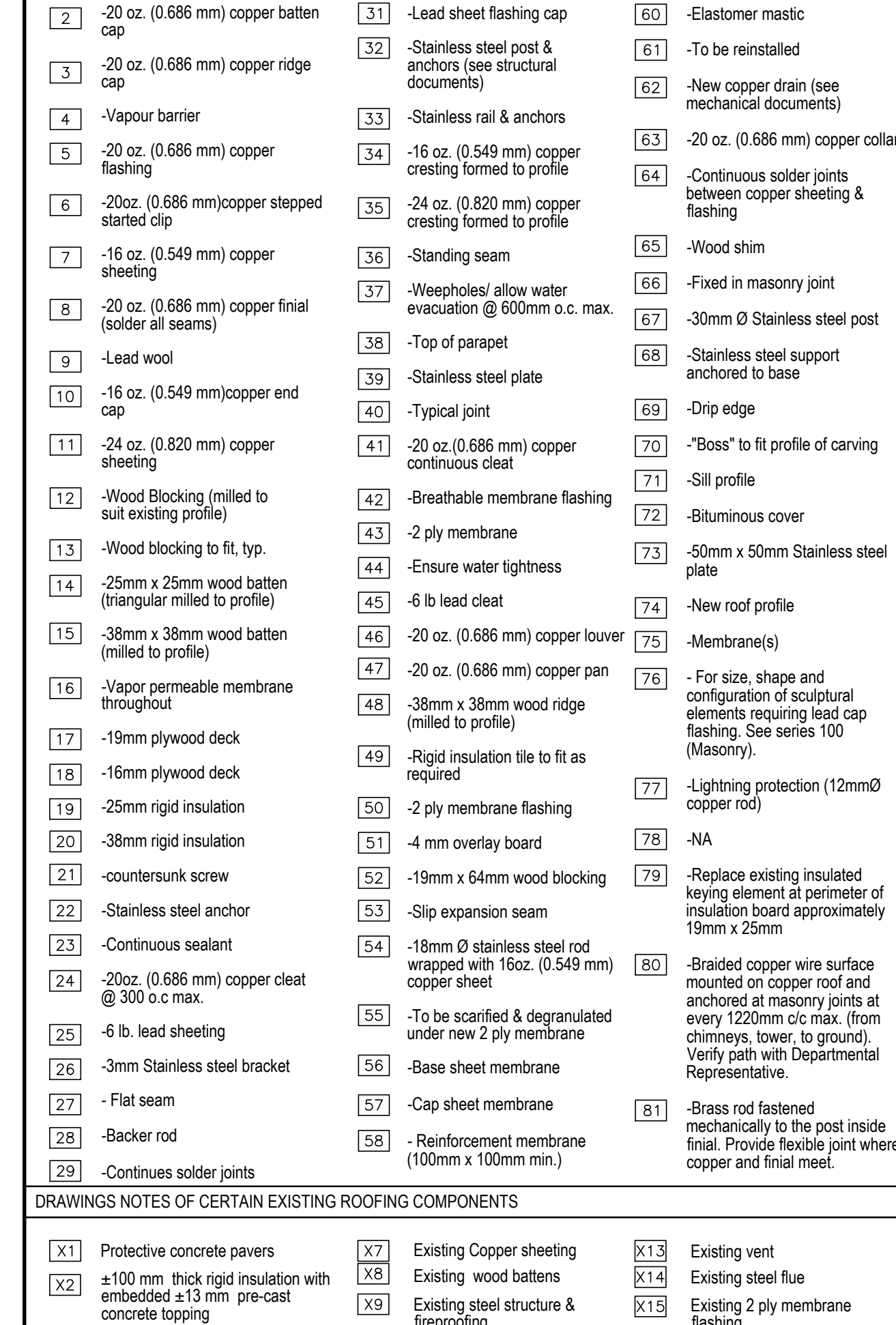
SECTION WINDOW SILL AND FLAT ROOF  
A-203 1:5



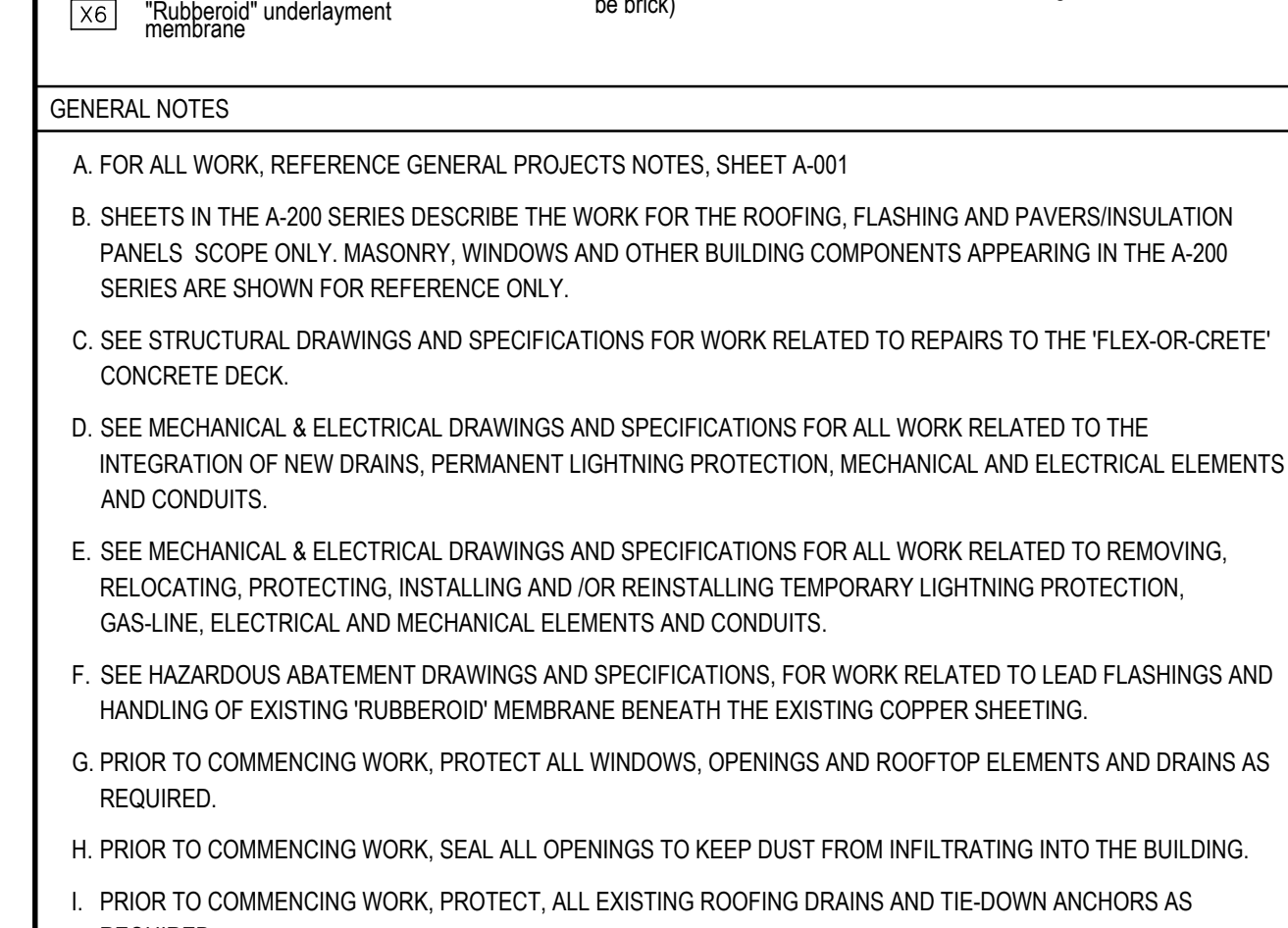
KEY PLAN  
A-203 TYP



LEGEND  
A-203 TYP



CONSTRUCTION DRAWING NOTES  
A-203 TYP



DRAWINGS NOTES OF CERTAIN EXISTING ROOFING COMPONENTS  
A-203 TYP

Parliamentary Precinct Branch  
107 Sparks St. Ottawa, Ontario K1A 0S5  
Direction générale de la  
Cité parlementaire  
107 rue Sparks Ottawa, Ontario K1A 0S5

KEY PLAN / PLAN-REPERE:

ARCHITECTS:

**Adjeleion Allen Rubeli**  
Consulting Engineers  
75 Albert Street, Ottawa, Ontario  
tel: (613) 232-5786  
oat@adjeleion.ca

STRUCTURAL & SEISMIC ENGINEERS:

**Adjeleion Allen Rubeli**  
Consulting Engineers  
75 Albert Street, Ottawa, Ontario  
tel: (613) 232-5786  
oat@adjeleion.ca

MECHANICAL & ELECTRICAL ENGINEERS:

**PAGEAUMOREL**  
Pagea, Michel & Associés Inc.  
17 Avenue St. Jean, St. Jean, QC J2K 2Z7  
Tel: (819) 226-4568 Fax: (819) 226-4569

SCAFFOLDING ENGINEERS:

**GOODEVE MANHIRE PARTNERS INC.**  
Structural Engineers  
17 Avenue St. Jean, St. Jean, QC J2K 2Z7  
Tel: (819) 226-4568 Fax: (819) 226-4569

CIVIL ENGINEERS:

**NOVATECH ENGINEERING CONSULTANTS LTD.**  
1000 Highway 101, Suite 200, St. Catharines, Ontario L2R 6L1  
Tel: (905) 254-3443 Fax: (905) 254-3443

ENVIRONMENTAL CONSULTANTS:

**Golden Associates**  
1000 Highway 101, Suite 200, St. Catharines, Ontario L2R 6L1  
Tel: (905) 254-3443 Fax: (905) 254-3443

For Design Purposes Only  
All dimensions & materials to be verified on site.

SEAL:

THESE DOCUMENTS WERE PREPARED  
SOLELY FOR THE PURPOSE OF R.207594.018  
AND ARE NOT INTENDED TO BE REFERENCED  
FOR ANY OTHER PROJECT.

APPENDIX 2

05 ISSUED FOR TENDER 24 APRIL 2014  
04 100% CONSTRUCTION DOCUMENTS 24 FEB 2014  
03 99% CONSTRUCTION DOCUMENTS 28 NOV 2013  
02 99% CONSTRUCTION DOCUMENTS 12 SEPT 2013  
01 33% CONSTRUCTION DOCUMENTS 30 JUL 2013

Project

**Centre Block East Pavilion Rehabilitation Project**  
1 Wellington St. Ottawa, Ontario K1A 0A6

Project

**Édifice du Centre  
Projet de réhabilitation  
Pavillon de l'est**  
1, rue Wellington Ottawa, Ontario K1A 0A6

PWGSC Project no. TSPSC No du projet  
**R.027594.018**

Tender M. Valente Soumission

Project Manager Administrateur de projet

Drawing Dessin

ROOFING INTERVENTIONS  
ROOFING DETAILS

Designed by M.D. 2013/09/10 Comp. par M.D. 2013/09/10  
Drawn by M.D. 2013/09/10 Dessiné par M.D. 2013/09/10  
Reviewed by M.C. 2013/09/10 Examiné par M.C. 2013/09/10  
Approved by M.C. 2013/09/10 Approuvé par M.C. 2013/09/10  
Project Architect Architecte Principale  
**J. Gersovitz**

FGMDA Project no. FGMDA No du projet  
**888-12-00**

Drawing no. No du dessin  
**A-203**