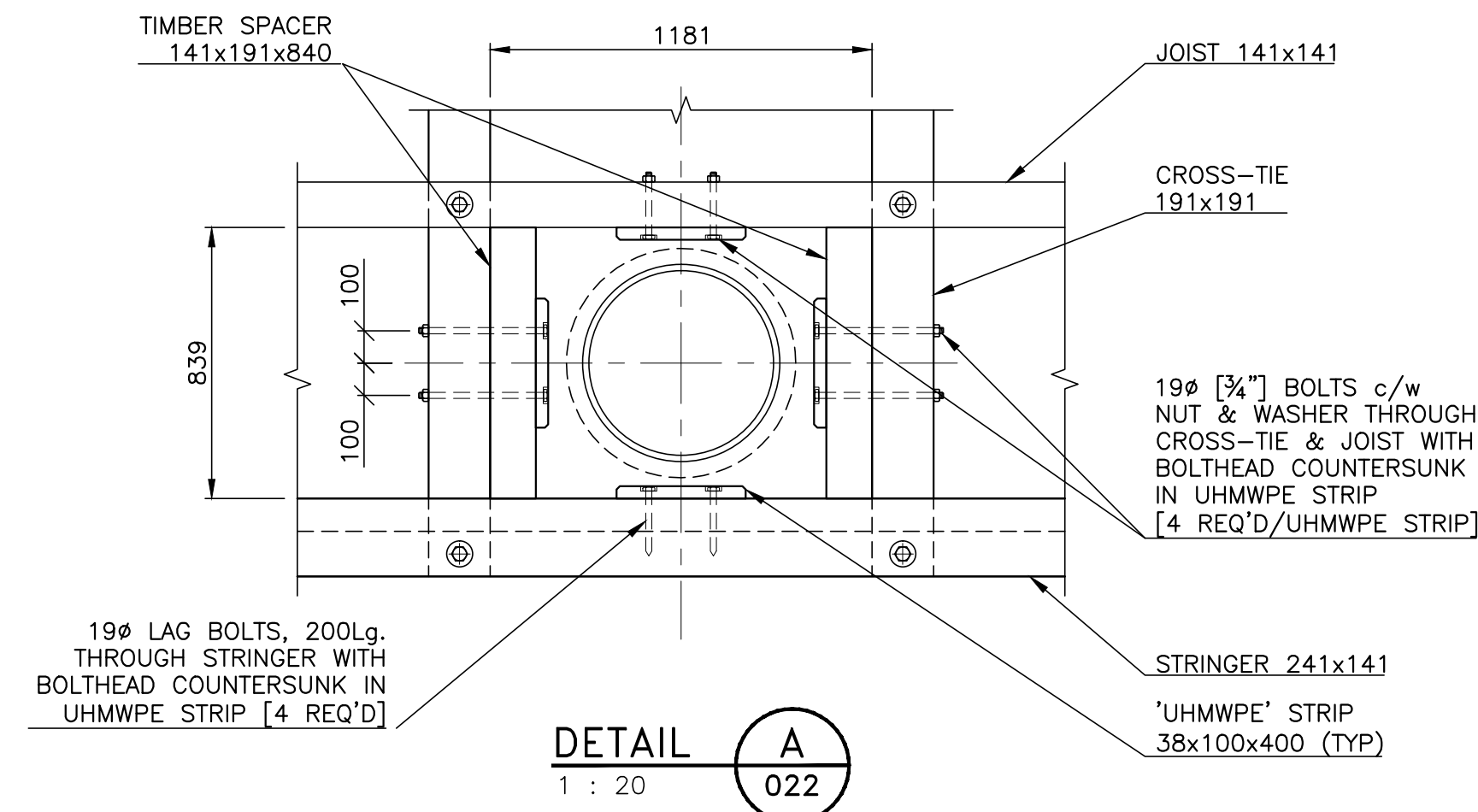
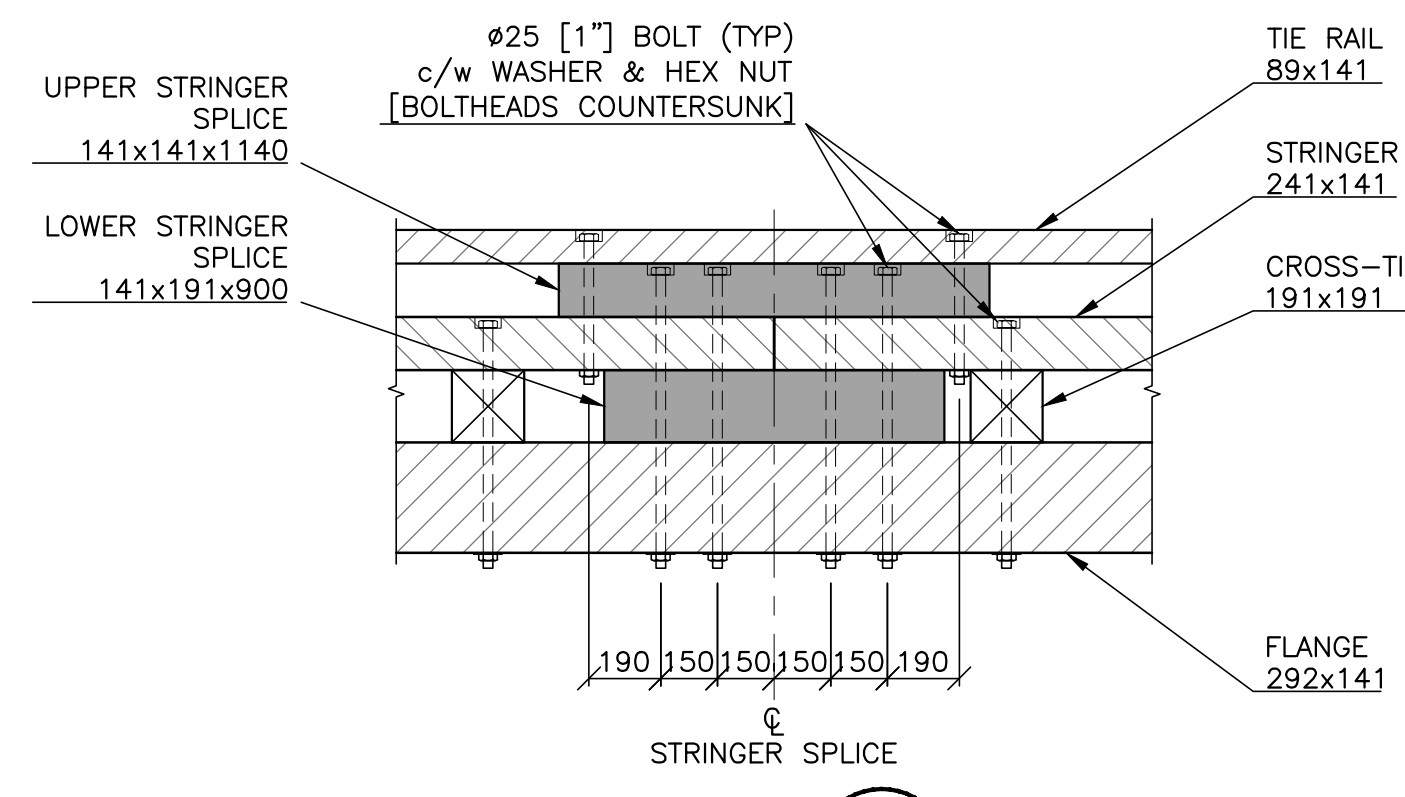


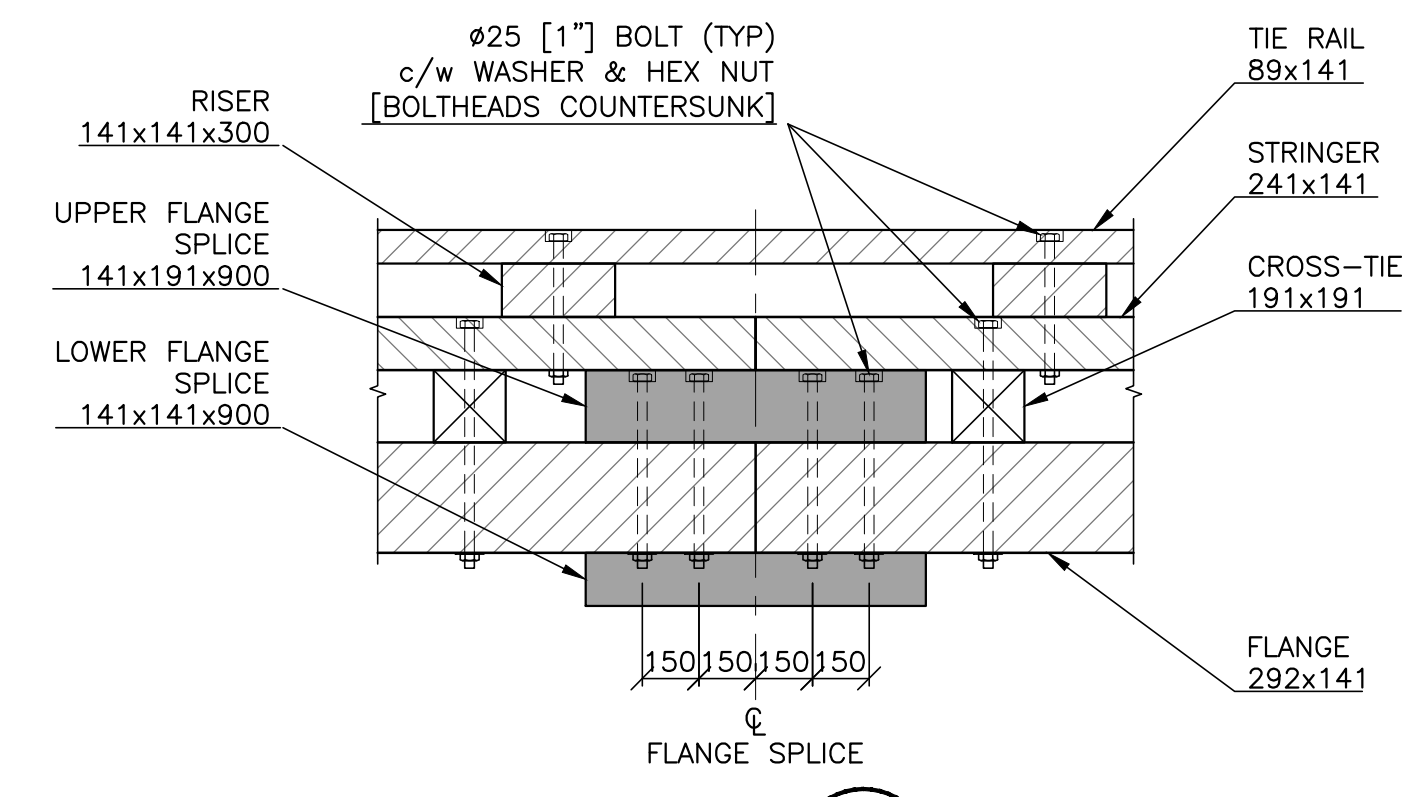
TYPICAL CROSS SECTION
1 : 20



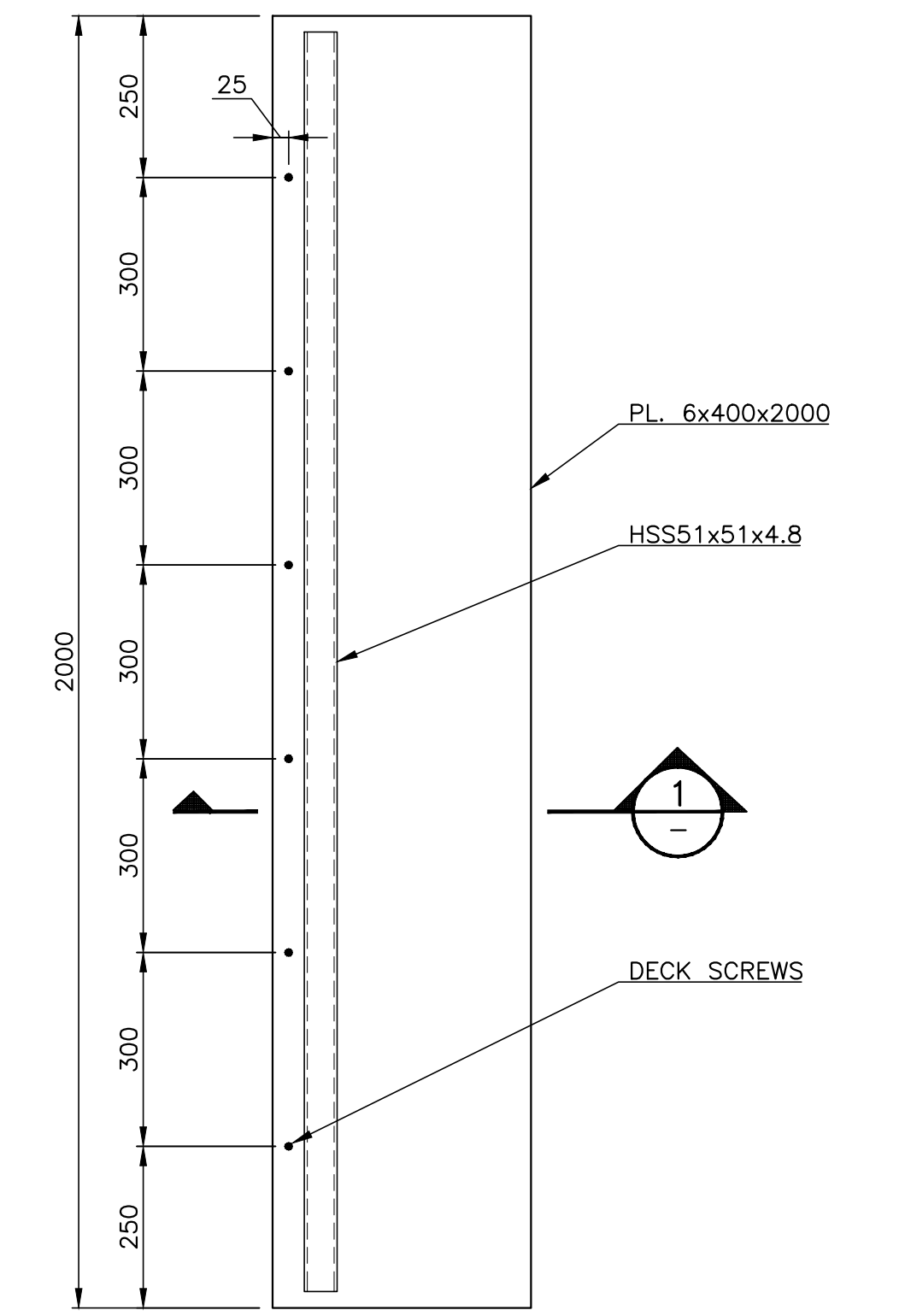
DETAIL A
1 : 20



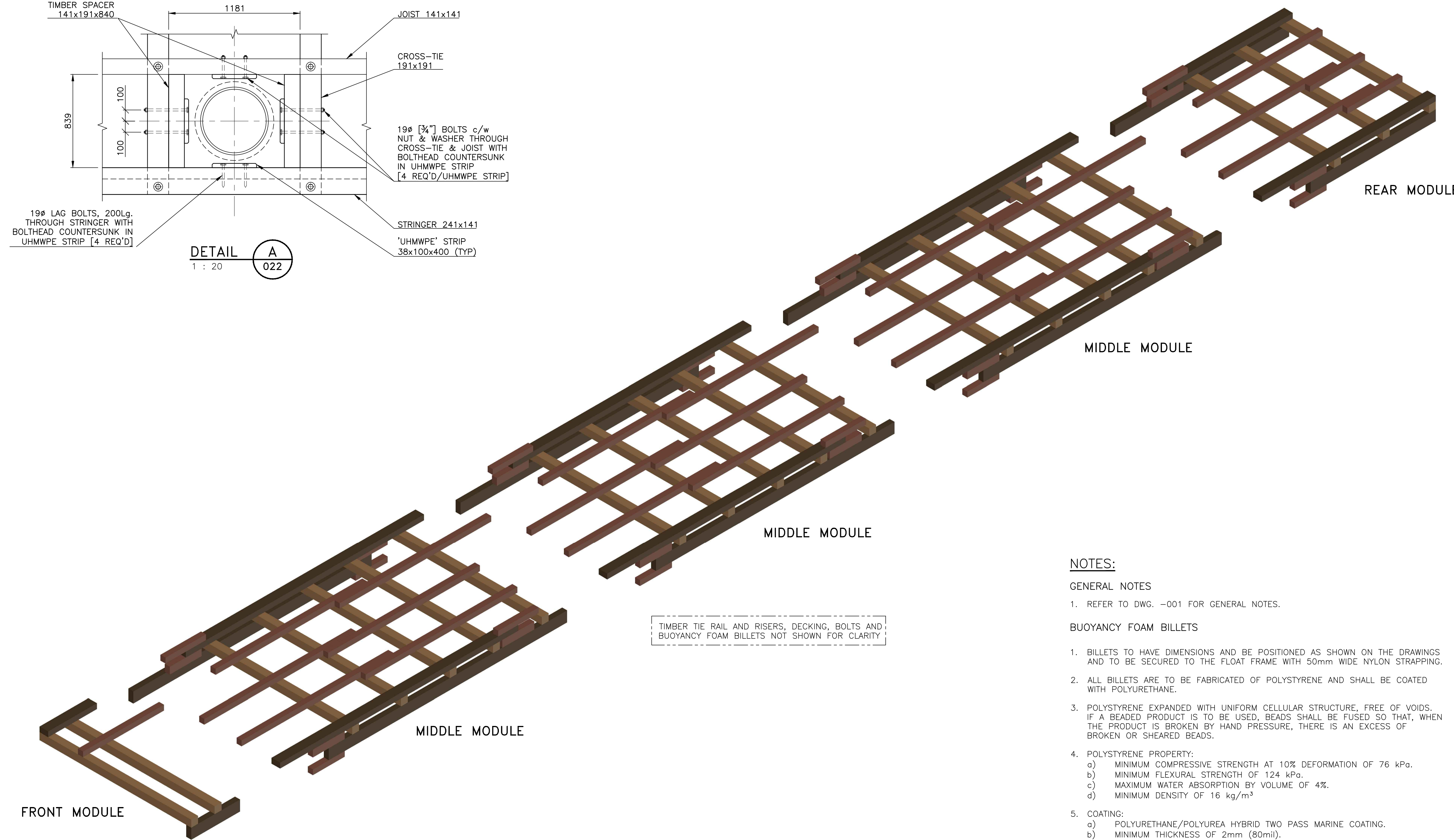
DETAIL B
1 : 20



DETAIL C
1 : 20



DETAIL D
1 : 10



NOTES:

- GENERAL NOTES
- REFER TO DWG. -001 FOR GENERAL NOTES.
- BUOYANCY FOAM BILLETS
- BILLETS TO HAVE DIMENSIONS AND BE POSITIONED AS SHOWN ON THE DRAWINGS AND TO BE SECURED TO THE FLOAT FRAME WITH 50mm WIDE NYLON STRAPPING.
 - ALL BILLETS ARE TO BE FABRICATED OF POLYSTYRENE AND SHALL BE COATED WITH POLYURETHANE.
 - POLYSTYRENE EXPANDED WITH UNIFORM CELLULAR STRUCTURE, FREE OF VOIDS. IF A BEADED PRODUCT IS TO BE USED, BEADS SHALL BE FUSED SO THAT, WHEN THE PRODUCT IS BROKEN BY HAND PRESSURE, THERE IS AN EXCESS OF BROKEN OR SHEARED BEADS.
 - POLYSTYRENE PROPERTY:
 - MINIMUM COMPRESSIVE STRENGTH AT 10% DEFORMATION OF 76 kPa.
 - MINIMUM FLEXURAL STRENGTH OF 124 kPa.
 - MAXIMUM WATER ABSORPTION BY VOLUME OF 4%.
 - MINIMUM DENSITY OF 16 kg/m³
 - COATING:
 - POLYURETHANE/POLYUREA HYBRID TWO PASS MARINE COATING.
 - MINIMUM THICKNESS OF 2mm (80mil).
- DIMENSIONED LUMBER AND SAWN LUMBER
- ALL LUMBER EXCEPT THE DECK PLANKS FOR THE FLOAT SHALL BE D-FIR-L(N), NO. 1 STRUCTURAL GRADE OR BETTER AS CALLED FOR ON THE DRAWINGS.
 - TIMBER DECK PLANKS SHALL BE WR CEDAR(N), NO. 2 STRUCTURAL GRADE OR BETTER.
 - DECK PLANKS SHALL BE FASTENED WITH 100 LONG GALVANIZED NAILS AT EACH FACE AT EACH CONTACT.
 - ALL LUMBER EXCEPT DECK PLANKS, TIE-RAILS, TIE-RAIL RISERS AND RUB-BOARDS ON FLOAT AND BREAKWATER SHALL BE GIVEN A FULL-CELL CREOSOTE TREATMENT IN ACCORDANCE WITH THE BEST MANAGEMENT PRACTICES FOR CREOSOTE, TO A NET RETENTION OF 224 KG PER M³ (14 LB/C.F.) AND TO A MINIMUM PENETRATION OF 22mm (7/8").
 - ALL CREOSOTE TREATED LUMBER FOR THE MOORING FLOAT SHALL BE PRE-CUT, PRE-DRILLED AND PRE-ASSEMBLED PRIOR TO RECEIVING THE CREOSOTE TREATMENT.
 - ALL TIMBER TIE-RAILS, TIE-RAIL RISERS AND RUB-BOARDS ON FLOAT AND BREAKWATER SHALL BE GIVEN A CCA OR ACZA PRESERVATIVE TREATMENT IN ACCORDANCE WITH THE BEST MANAGEMENT PRACTICES.
 - ALL CEDAR DECK PLANKS SHALL BE UNTREATED.

TIMBER TIE RAIL AND RISERS, DECKING, BOLTS AND BUOYANCY FOAM BILLETS NOT SHOWN FOR CLARITY

REVISION	REVISION	REFERENCE DRAWINGS	DESIGNED:	SCALE:	FILE No.	CAD FILE NAME:	PROJECT No.	DESIGNED:	SCALE:	FILE No.	CAD FILE NAME:	PROJECT No.
E			A.P.	AS NOTED								
D					212124-023							
C			P.D.M.									
B	ISSUED FOR TENDER	06.13.14	A.P.		212124-023							
A	ISSUED FOR REVIEW	05.30.14	A.P.		212124-023							

THIS DRAWING IS THE PROPERTY OF VILLHOLTH JENSEN & ASSOCIATES LTD. AND SHALL ONLY BE USED FOR THE PURPOSE TO WHICH IT REFERS. THIS DRAWING IS PREPARED SOLELY FOR THE USE BY THE PARTY WITH WHOM VILLHOLTH JENSEN & ASSOCIATES LTD. HAS ENTERED INTO A CONTRACT AND THERE ARE NO REPRESENTATIONS OF ANY KIND MADE BY VILLHOLTH JENSEN & ASSOCIATES LTD. TO ANY PARTY WITH WHOM VILLHOLTH JENSEN & ASSOCIATES LTD. HAS NOT ENTERED INTO A CONTRACT.

DESIGNED: A.P.
SCALE: AS NOTED
FILE No. 212124-023
DRAWN: P.D.M.
CAD FILE NAME: 212124-023
CHECKED: A.P.
PROJECT No. 212124
APPROVED:

VILLHOLTH JENSEN & ASSOC. LTD.
CONSULTING ENGINEERS
VANCOUVER, B.C.

Fisheries and Oceans
Pêches et Océans
PORT HARDY - NEW CCG STATION
TIMBER FLOAT SECTIONS AND DETAILS
DRAWING No. 212124-023
REV. B

June 11, 2014 4:00pm