

Public Works
Government Services
Canada

Travaux publics
Services gouvernementaux
Canada

LIST OF DRAWINGS

SITE	REMOVALS
C-11	SITE AND GRADING PLAN
C-12	ELECTRICAL SITE PLAN AND DETAILS
E1-1	

Architectural and
Engineering Services

Services d'architecture
et de génie

Ontario Region

Région de l'Ontario

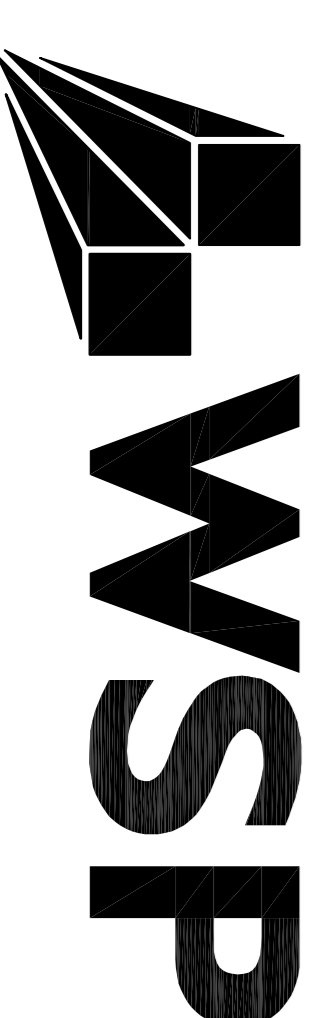
BATH, ONTARIO. BATH INSTITUTION NEW PARKING LOT EXPANSION PWGSC Proj. No.: R.067955.001



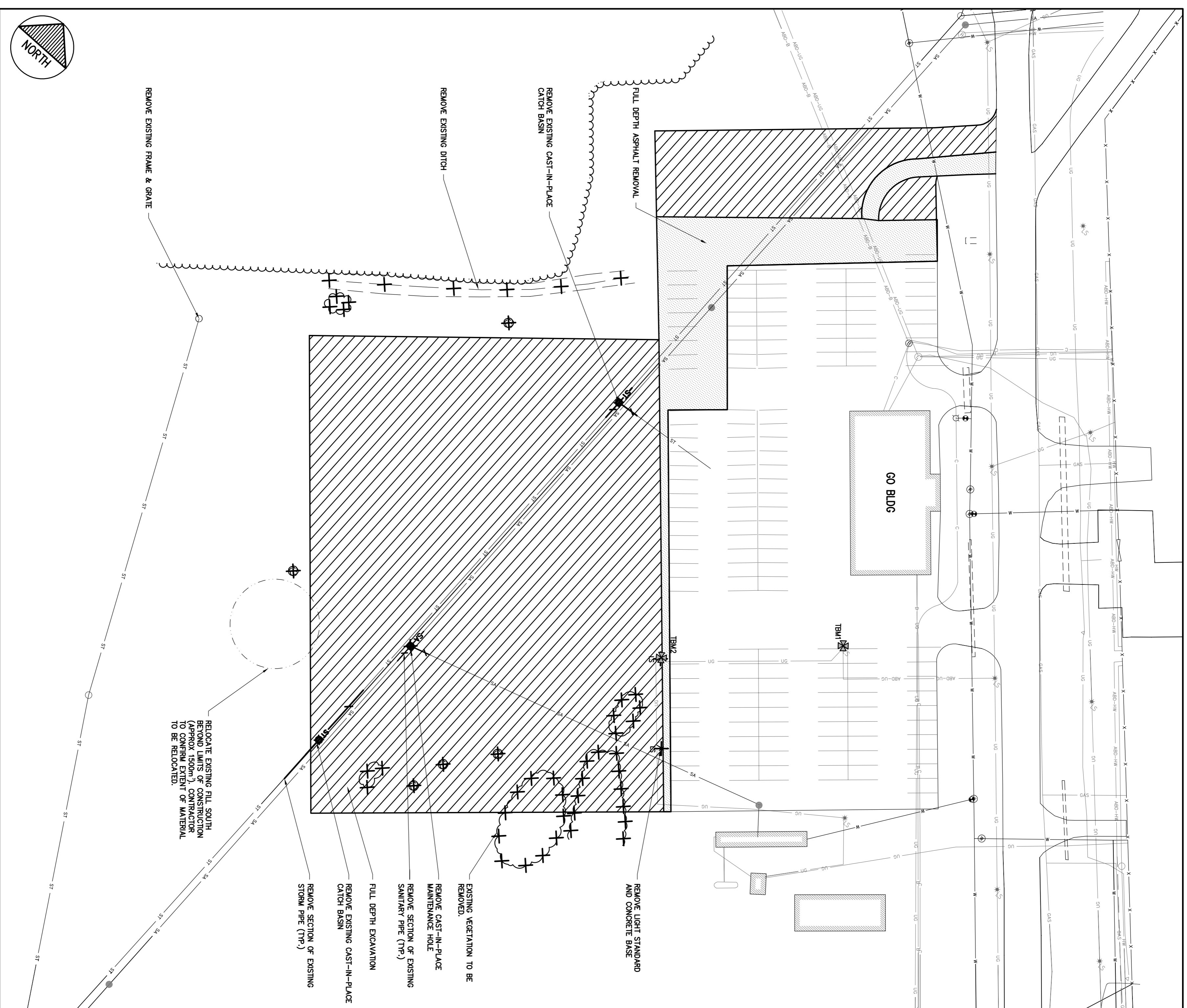
ISSUED FOR
TENDER

DATE: JUNE 18, 2014

Canada



WSP CANADA INC.
1224 GARDINERS ROAD, SUITE 201, KINGSTON, ON
TEL: (613) 634-7373
FAX: (613) 634-3523
WEBSITE: www.wspgroup.com



LEGEND:

	EXISTING EDGE OF ASPHALT REMOVAL
	EXISTING PAINT LINES
	EXISTING TOP OF SLOPE
	EXISTING BOTTOM OF SLOPE
	EXISTING SANITARY SEWER
	SANITARY SEWER REMOVAL
	STORM SEWER REMOVAL
	EXISTING WATER PIPE
	EXISTING BELL UTILITY
	EXISTING CABLE UTILITY
	EXISTING GAS LINE
	EXISTING FIRE HYDRANT
	EXISTING WATER VALVE
	EXISTING STEAM MANHOLE
	EXISTING ELECTRICAL MANHOLE
	EXISTING TREE
	BORE HOLE LOCATION
	TEMPORARY BENCHMARK
	FULL DEPTH ASPHALT REMOVAL
	FULL DEPTH EXCAVATION

TEMPORARY BENCHMARKS:

BM1 - TOP OF BOLT ON WESTERLY CORNER OF BASE FOR LS ELEV.=96.79

BM2 - TOP OF BOLT ON NORTHERLY CORNER OF BASE FOR LS ELEV.=96.97

GENERAL NOTES:

- CONTRACTOR TO VERIFY LOCATION OF ALL BARRIED SERVICES PRIOR TO START OF CONSTRUCTION
- TOPOGRAPHIC INFORMATION PROVIDED BY LESLIE M. HIGGINS SURVEYING LTD.
- GEOTECHNICAL INFORMATION PROVIDED BY INSPEC-SOL INC.
- EXISTING BUILDINGS AND TREES TO BE PROTECTED DURING CONSTRUCTION UNLESS INDICATED OTHERWISE.
- REINSTATE DISTURBED AREAS TO ORIGINAL CONDITION OR LIGHT STANDARD REMOVAL REPRESENTATIVE PRIOR TO COMMENCING RESTORATION.
- ASSUME ALL EXISTING STORM AND SANITARY SEWERS TO BE EXISTING PIPE MATERIAL, SIZES, LENGTHS AND INVERTS PRIOR TO ORDERING. CORROBORATE WITH DEPARTMENTAL REPRESENTATIVE.

Public Works and Government Services Canada
Troisqux publics et Services gouvernementaux Canada

WSP

1224 GARDINER ROAD, SUITE 201
 KINGSFORD, ONTARIO
 CANADA, K7P 6Z1 631-634-3233
 PHONE: 613-634-2323 FAX: 613-634-3233
 WWW.WSP99.COM



04		
03		
02		
01	ISSUED FOR TENDER	2014/06/18
revision		date

Do not scale drawings. Verify all dimensions and conditions on site and immediately notify the Departmental Representative of all discrepancies.

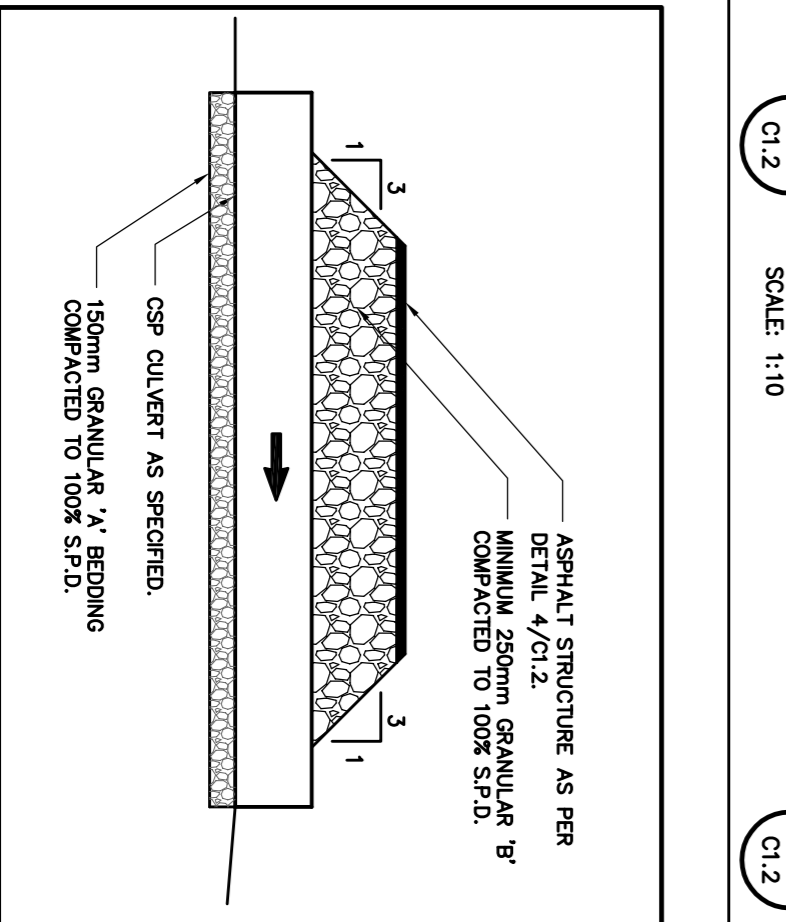
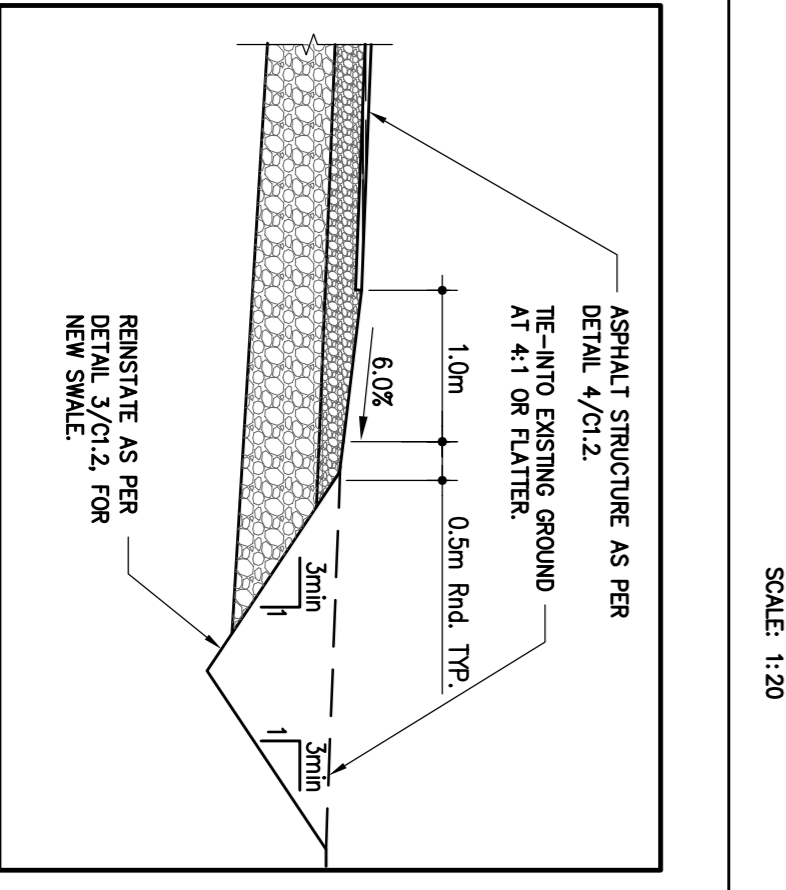
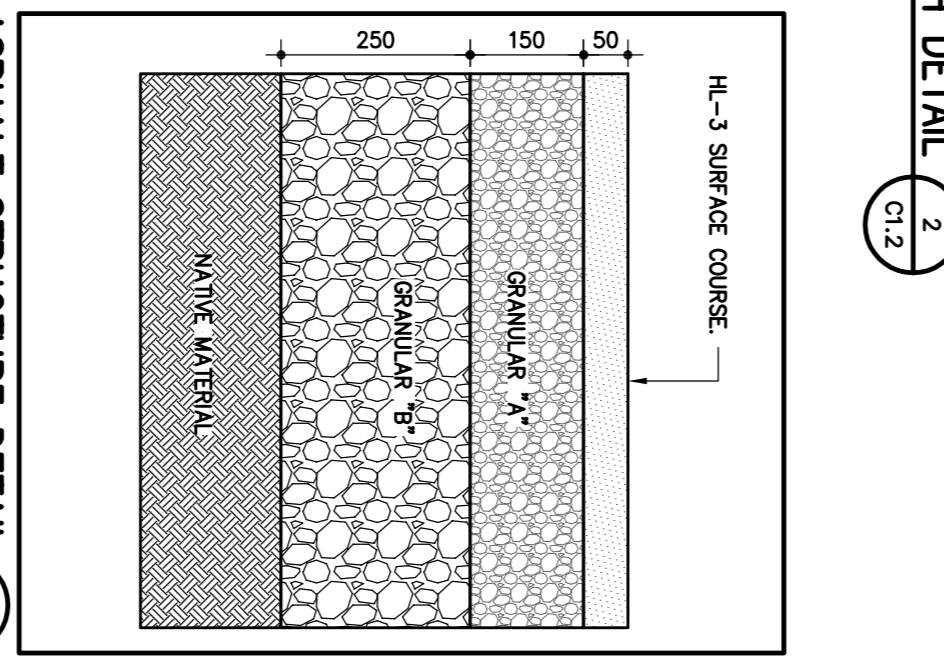
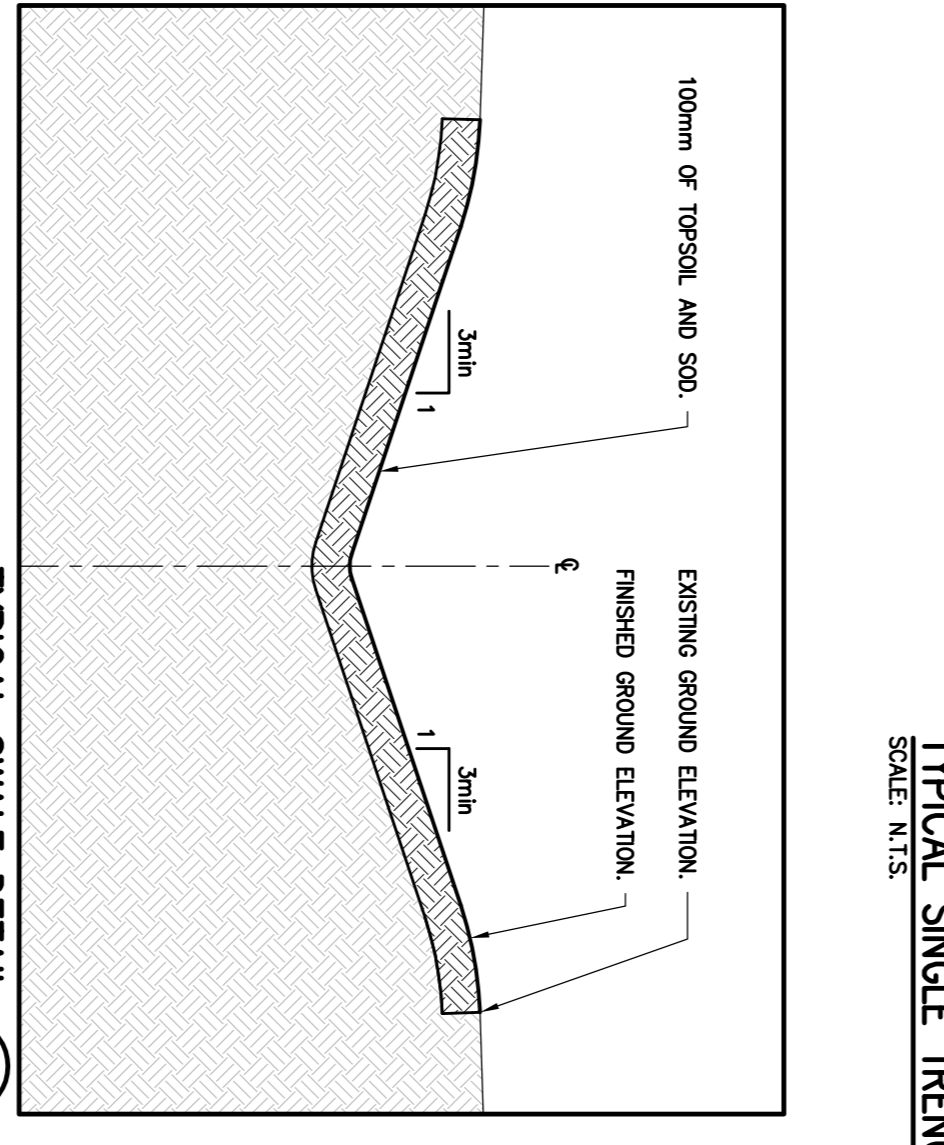
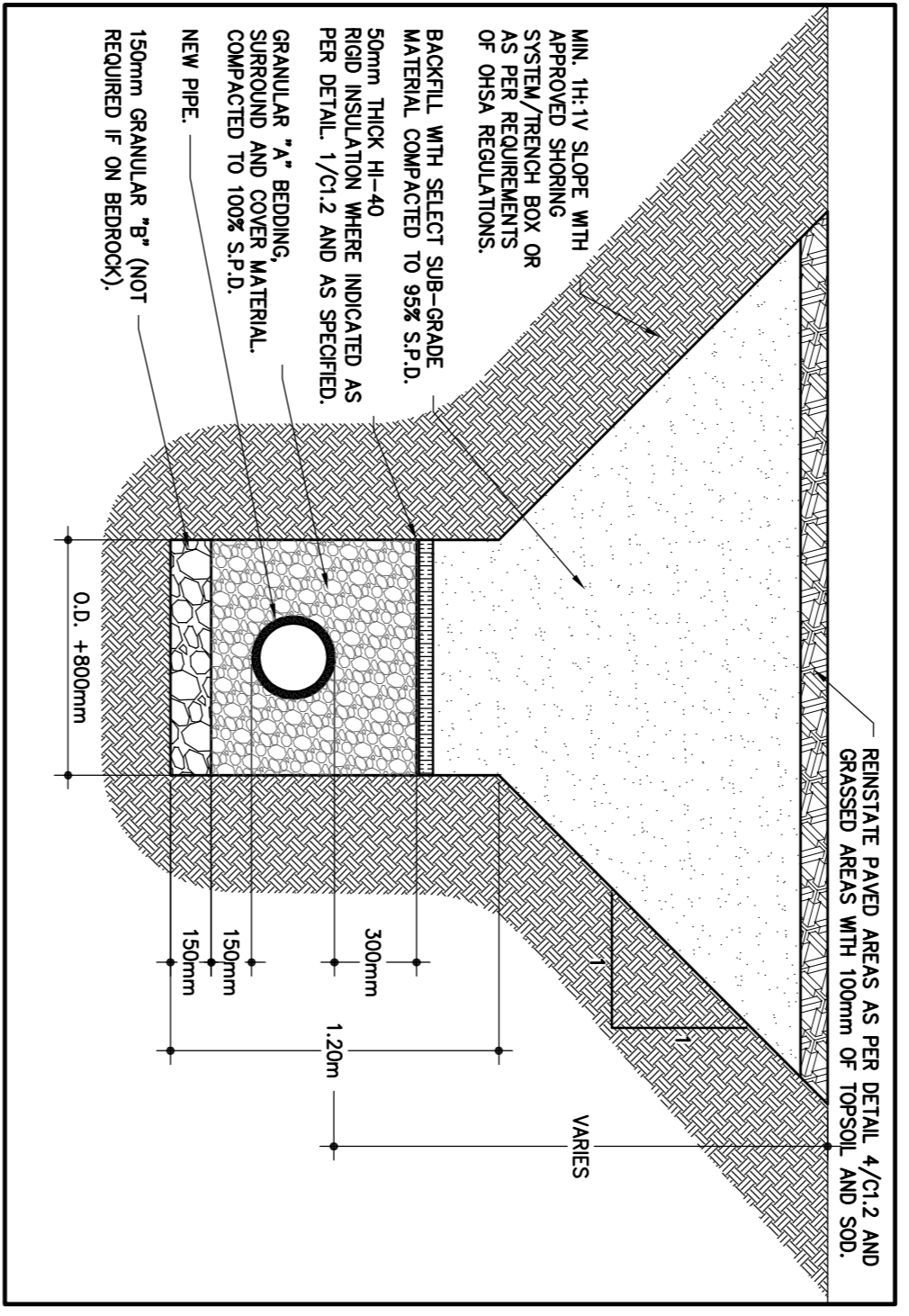
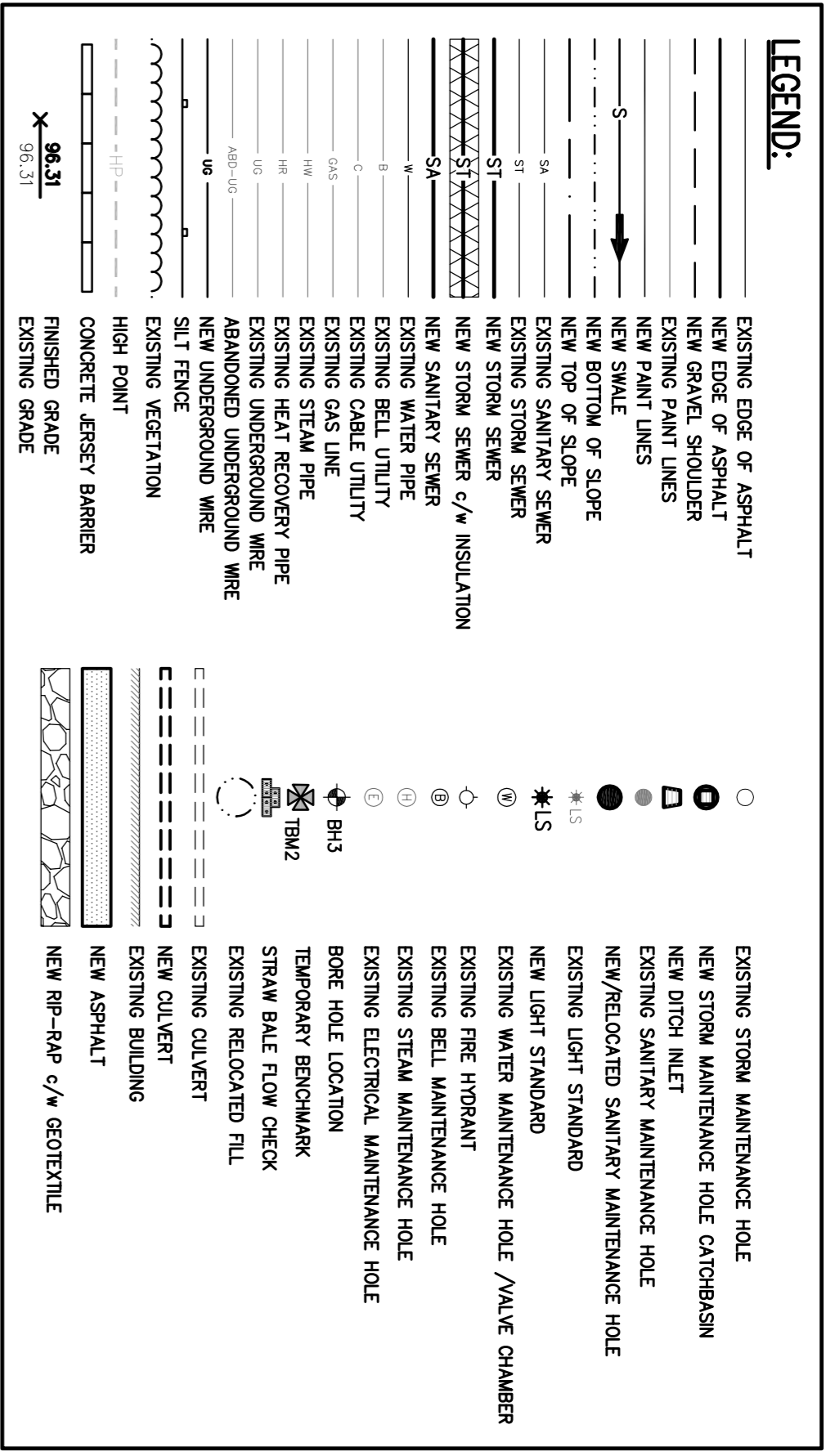
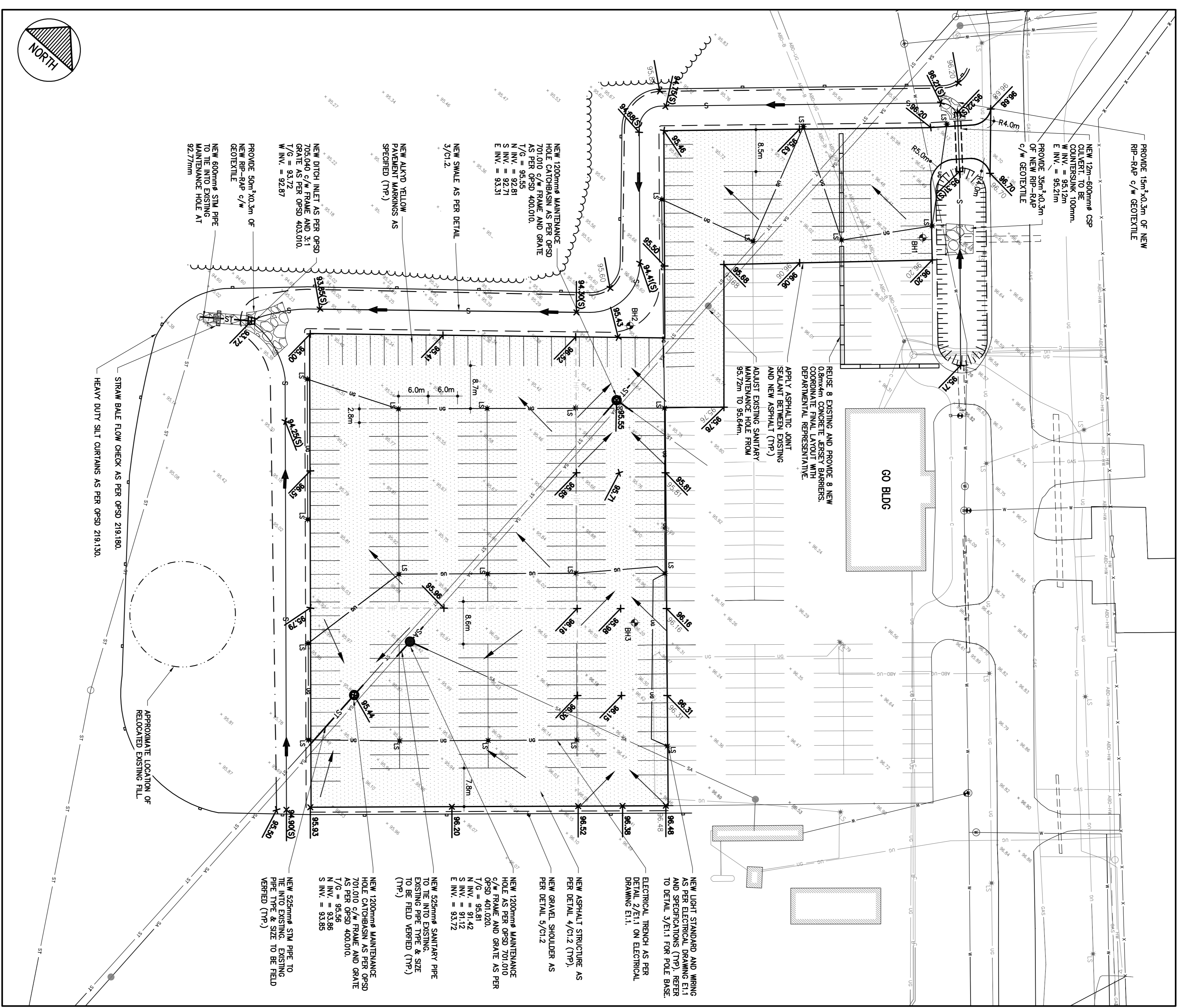
A Detail No.
B drawing no. - where detail required
C drawing no. - where detail ends
 drawing no. - where detailed
 design no. - as detailed

project title
BATH BATH INSTITUTION
 Ontario

NEW PARKING LOT EXTENSION

drawing title
CIVIL REMOVALS PLAN

drawn by dessiné par	ST-R.
designed by conçu par	M.F.
approved by approuvé par	M.M.
project date date du projet	2014-04-23
project no. no. du projet	R.067955.001
drawing no. dessiné no.	C1.1



Public Works and Government Services Canada
Troux publics et Services gouvernementaux Canada

WSP

1224 GARDINER ROAD, SUITE 201
 KINGSTON, ONTARIO
 CANADA K7P 0Z2
 PHONE: 613-634-7533 FAX: 613-634-3933
 WWW.WSPINC.COM

GENERAL NOTES:

- CONTRACTOR TO VERIFY LOCATION OF ALL BURIED SERVICES FROM TO START OF CONSTRUCTION
- TOPOGRAPHIC INFORMATION PROVIDED BY LESLIE M. HIGSON SURVEYING LTD.
- GEOTECHNICAL INFORMATION PROVIDED BY INSPEC-SOL INC.
- EXISTING BUILDINGS AND TREES TO BE PROTECTED DURING CONSTRUCTION UNLESS INDICATED OTHERWISE.
- RENSTATE DISTURBED AREAS TO ORIGINAL CONDITION OR TO COMPARING RESTORATION.
- ASSUME ALL EXISTING STORM AND SANITARY SEWERS TO BE EXISTING PIPE MATERIAL, SIZES, LENGTHS AND INVERTS PRIOR TO ORDERING. COORDINATE WITH DEPARTMENTAL REPRESENTATIVE.

Do not scale drawings. Verify all dimensions and conditions on site and immediately notify the Departmental Representative of all discrepancies.

01	ISSUED FOR TENDER	2014/06/18	date
02			
03			
04			

NEW PARKING LOT EXTENSION

project title
 civil
 SITE PLAN, GRADING
 AND DETAILS

project location
 Ontario
 BATH
 BATH
 INSTITUTE

project manager
 administrateur
 de projets

designed by
 ST-R.

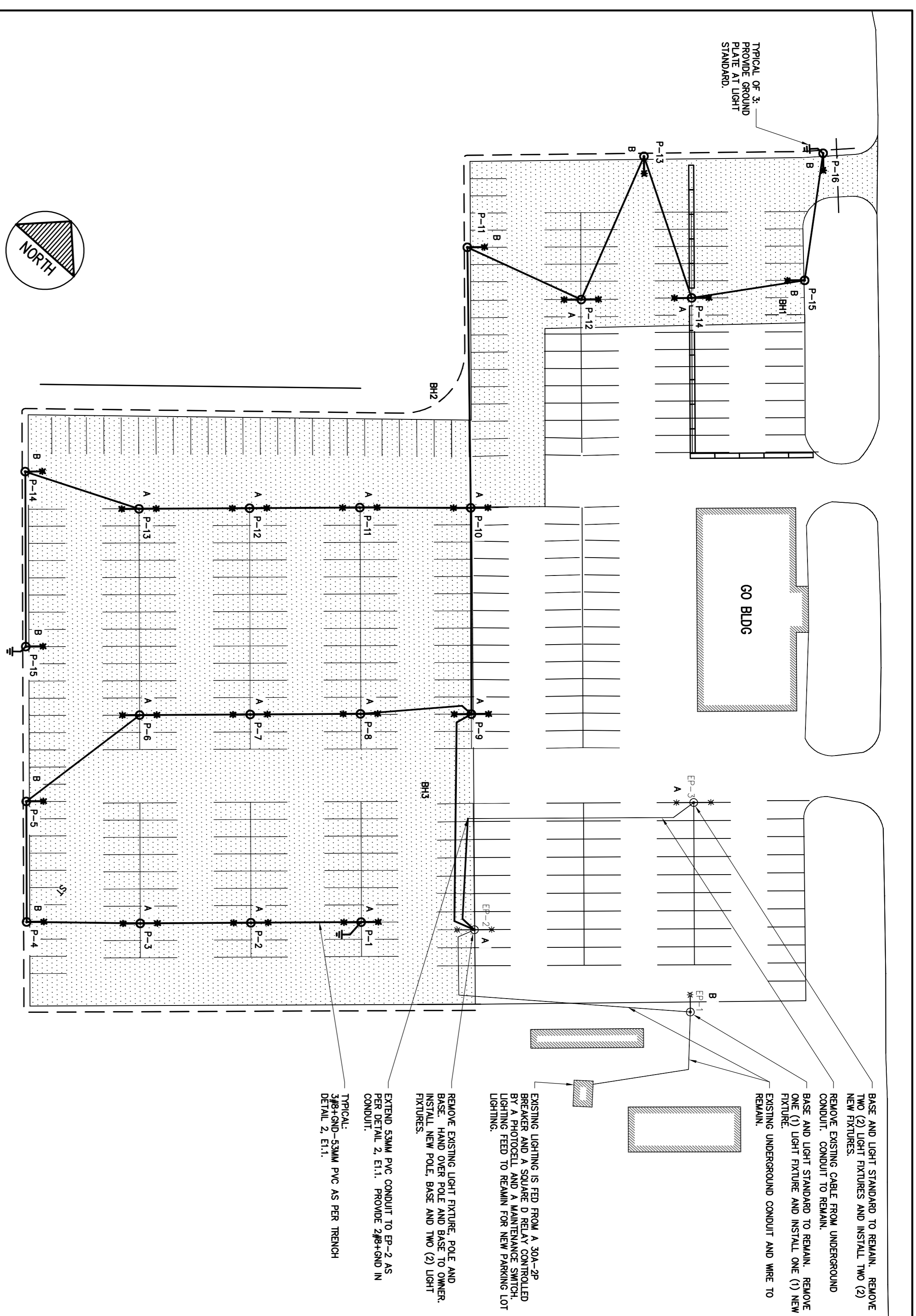
approved by
 M.F

approved par
 M.M

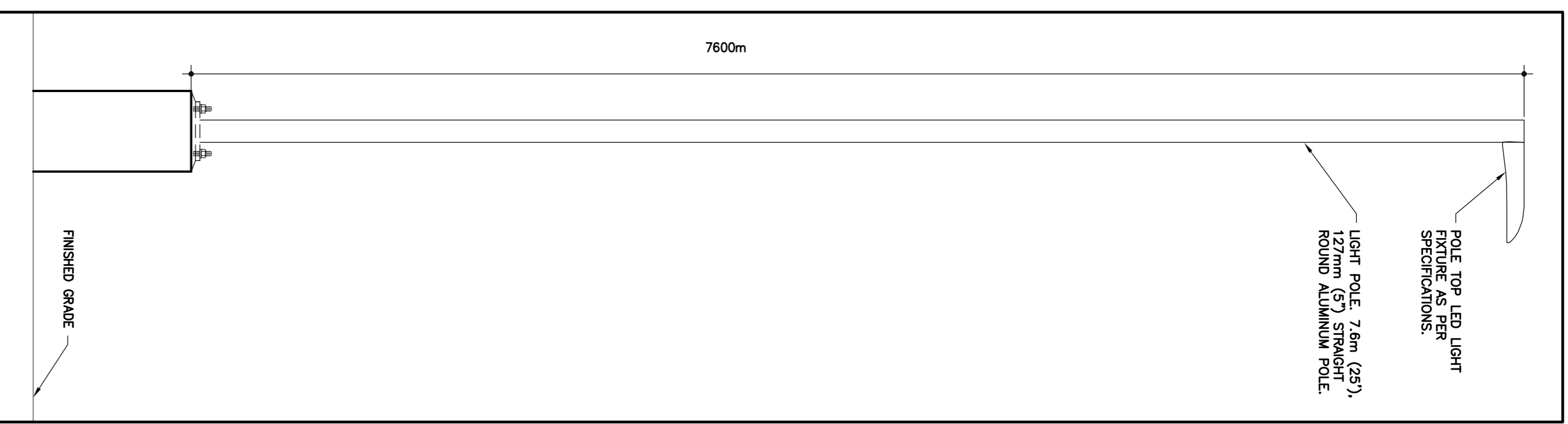
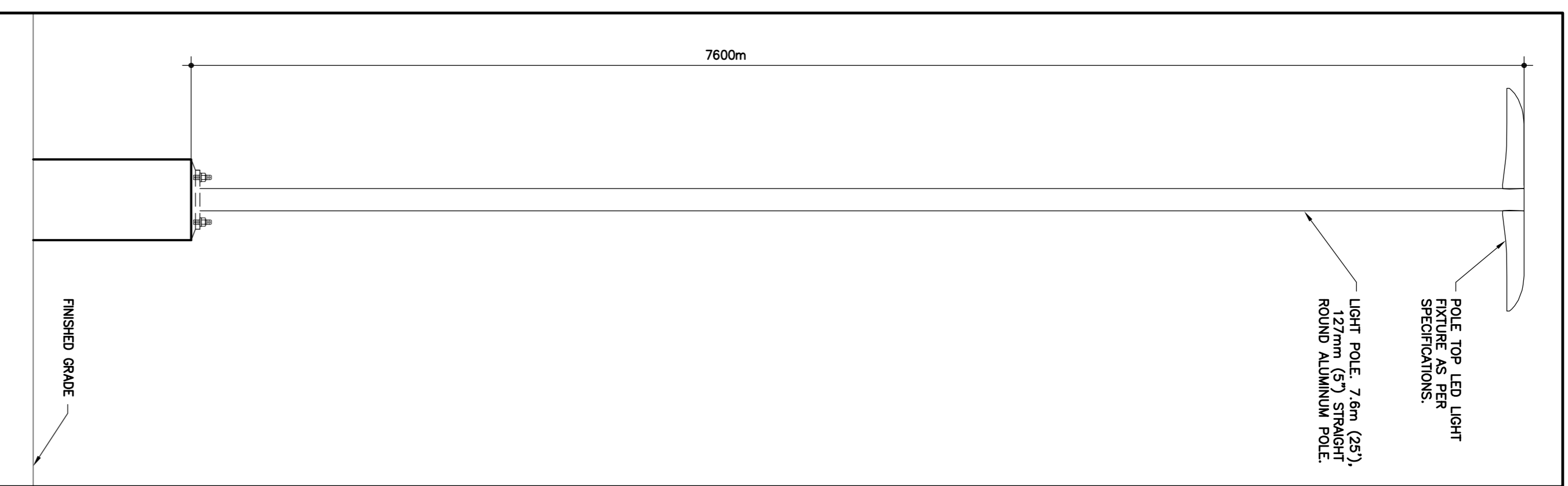
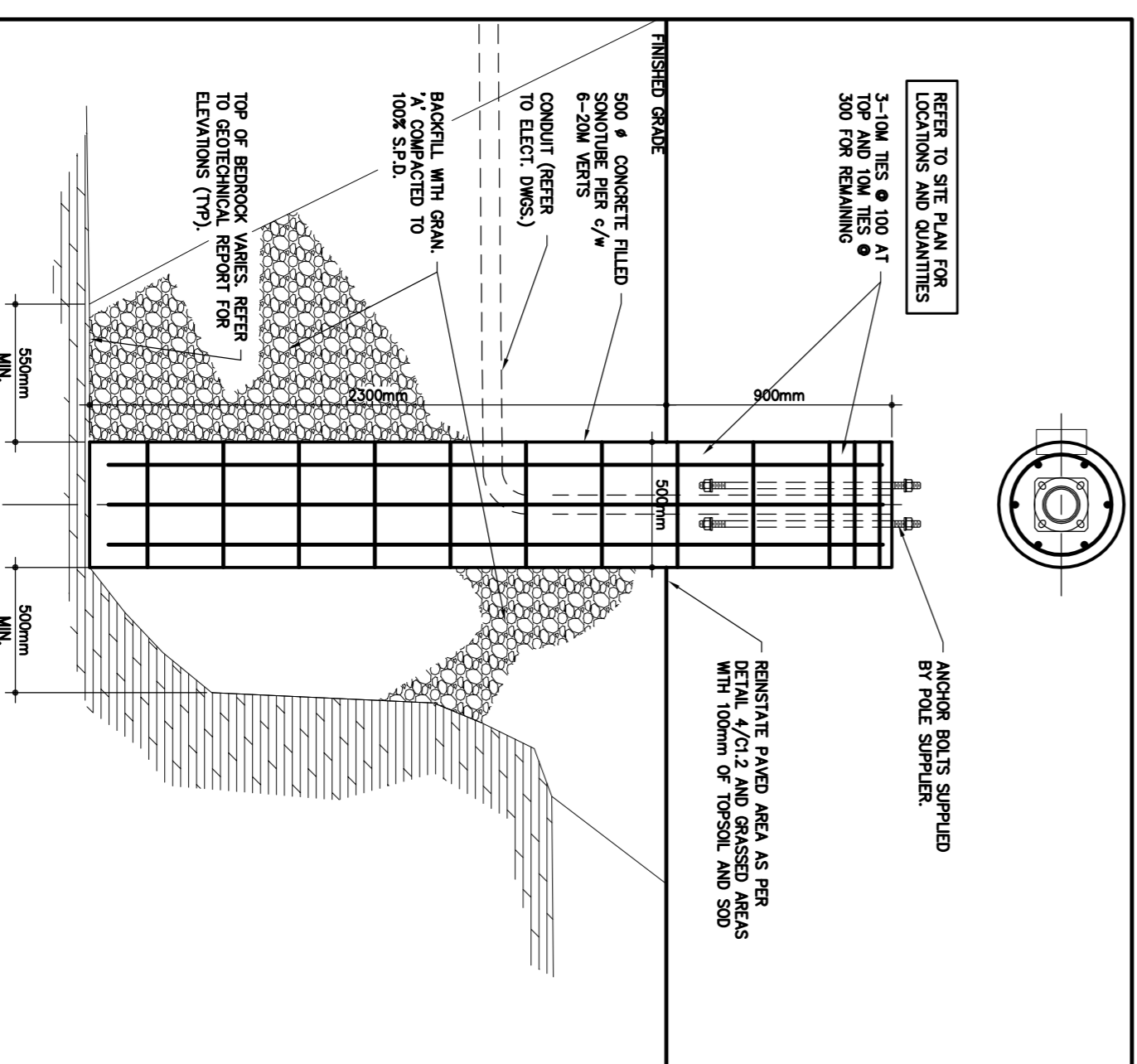
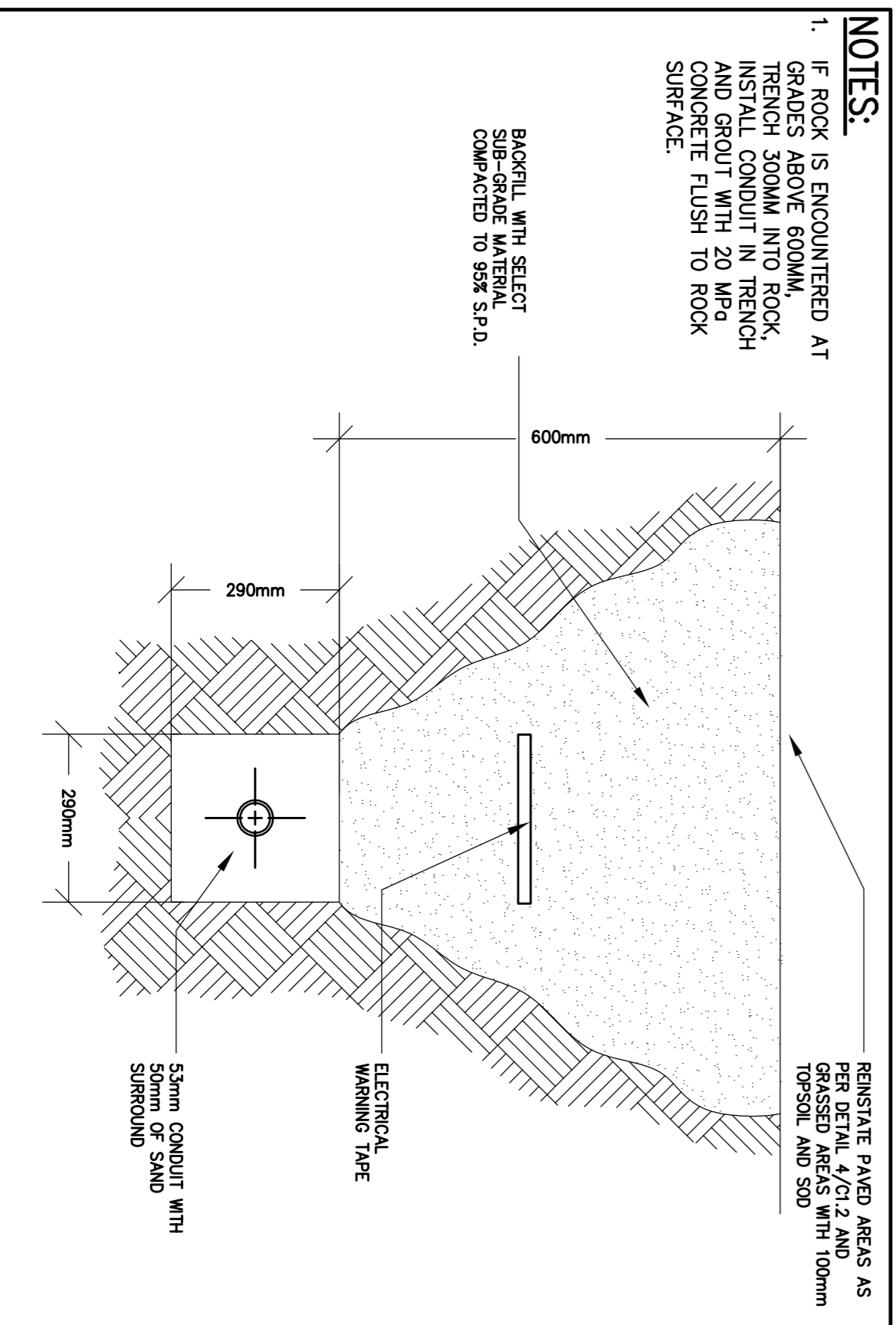
project date
 2014-04-23

project no.
 R.067955.001

drawing no.
 C1.2



1 SITE PLAN & GRADING
SCALE: 1:300
E1.1



WSP

1224 GARDINER ROAD, SUITE 201
KINGSTON, ONTARIO
CANADA K7P 6Z2
PHONE: 613-631-2523 FAX: 613-631-3523
WWW.WSPGROUP.COM

Public Works and Government Services Canada
Travaux publics et Services gouvernementaux Canada

04		
03		
02		
01	ISSUED FOR TENDER	2014/06/18
revision		date

Do not scale drawings. Verify all dimensions and conditions on site and immediately notify the Departmental Representative of all discrepancies.

A Detail No.
B drawing no. - where detail required
C drawing no. - where detailed

Project Name
BATH BATH INSTITUTION
Ontario

NEW PARKING LOT EXTENSION

drawing title
ELECTRICAL SITE PLAN, GRADING AND DETAILS

drawn by
designé par DM

designed by
conçue par DM

approved by
approuvé par M.M

project manager
administrateur de projets

project date
date du projet 2014-04-23

project no.
no. du projet R.067955.001

drawing no.
no. du dessin E1.1