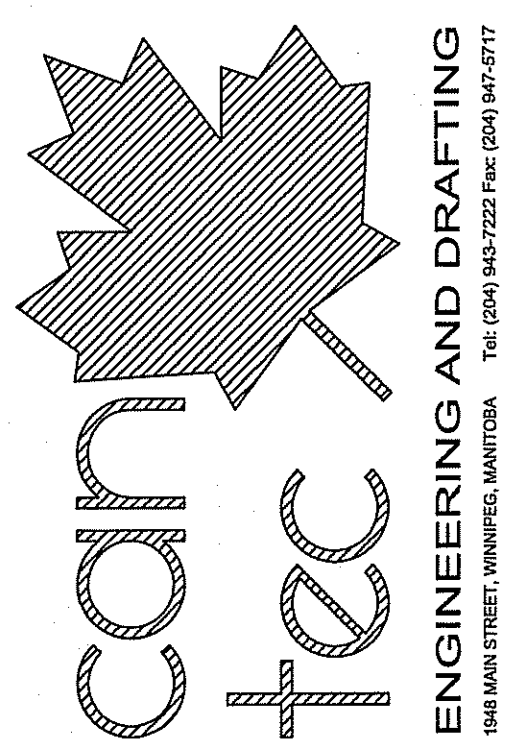
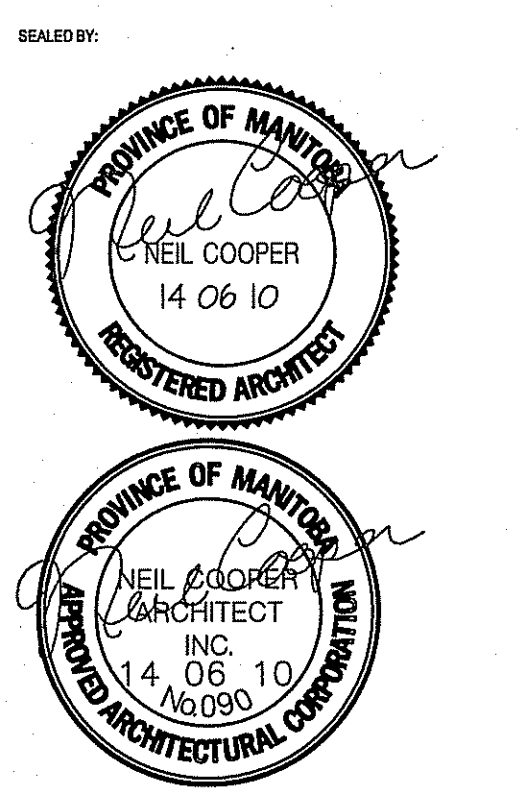


THIS DRAWING MUST NOT BE SCALED.
 THE GENERAL CONTRACTOR SHALL VERIFY ALL DIMENSIONS, DATUMS AND LEVELS PRIOR TO COMMENCEMENT OF WORK AND IS HELD RESPONSIBLE FOR REPORTING ANY DISCREPANCY OR OMISSION TO CAN-TEC SERVICES LTD. IMMEDIATELY.
 THIS DRAWING IS THE EXCLUSIVE PROPERTY OF CAN-TEC SERVICES LTD. AND CAN BE REPRODUCED ONLY WITH THE PERMISSION OF CAN-TEC SERVICES LTD. IN WHICH CASE THE REPRODUCTION MUST BEAR THEIR NAME AS THE ENGINEERING/DRAFTING FIRM.

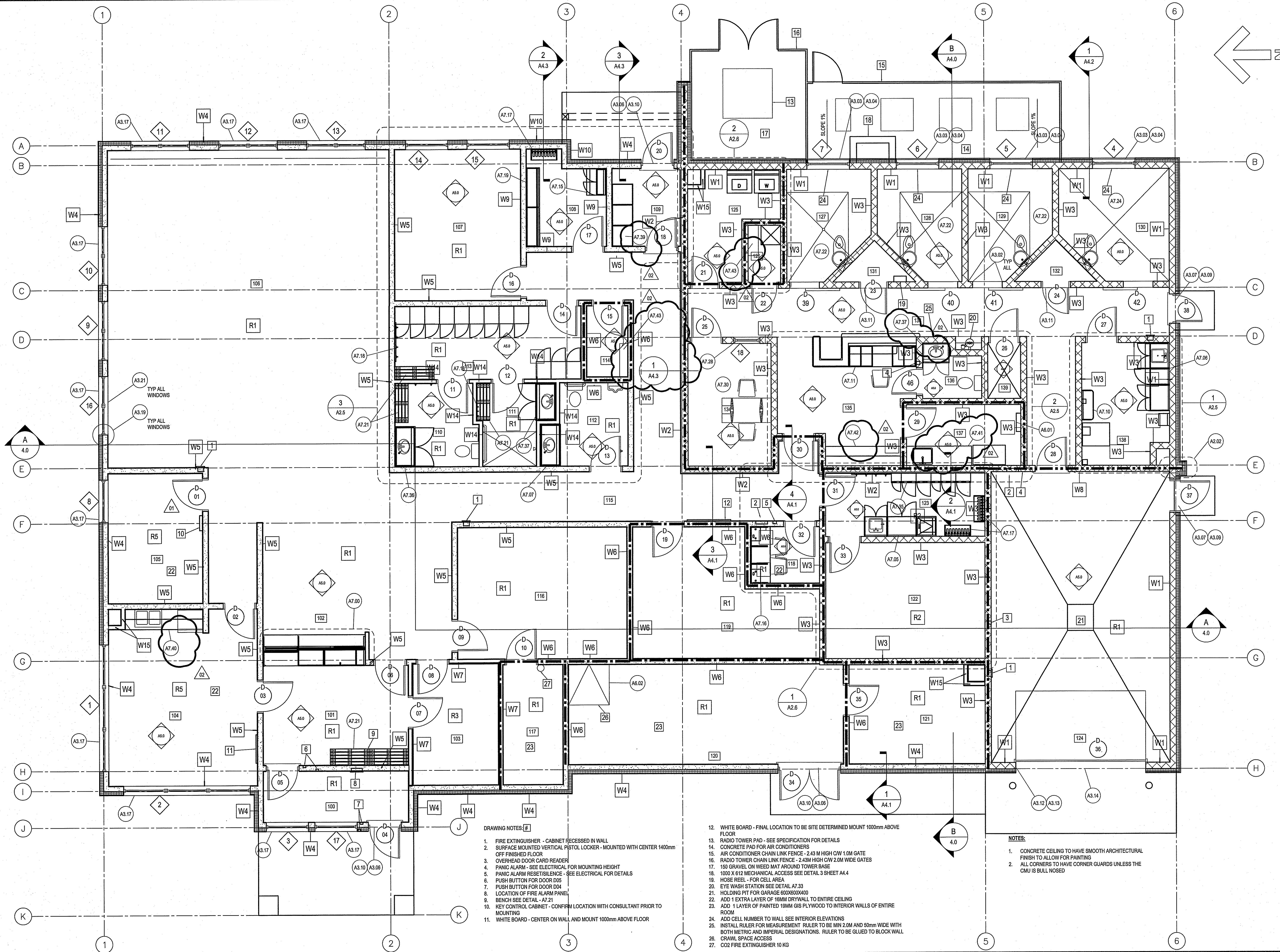


REV.#	REVISION	DATE (Y/M/D)	BY
1	ISSUED FOR 35% REVIEW	14/08/10	NEIL COOPER
2	ISSUED FOR 65% REVIEW	14/08/10	NEIL COOPER
3	ISSUED FOR 95% REVIEW	14/08/10	NEIL COOPER
4	ISSUED FOR 100% REVIEW	14/08/10	NEIL COOPER



PROJECT TITLE: **FACILITY BUILDING**
 DRAWING TITLE: **MAIN FLOOR PLAN - REFERENCES**
 CHECKED BY: NC
 DRAWN BY: RS
 SCALE: 1:50
 DATE (Y/M/D): 13/12/07
 LOCATION: ISLAND LAKE, MANITOBA

REVISION #: 02
 JOB NO: 13-168-01-47

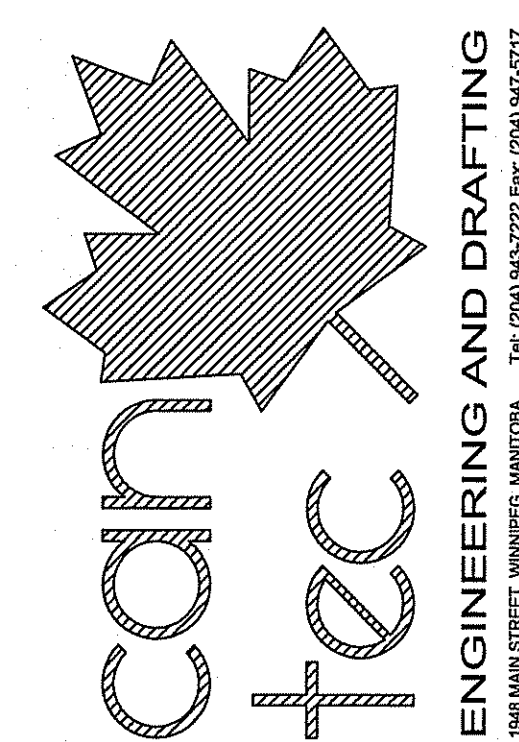


- DRAWING NOTES:**
- FIRE EXTINGUISHER - CABINET RECESSED IN WALL
 - SURFACE MOUNTED VERTICAL PISTOL LOCKER - MOUNTED WITH CENTER 1400mm OFF FINISHED FLOOR
 - OVERHEAD DOOR CARD READER
 - PANIC ALARM - SEE ELECTRICAL FOR MOUNTING HEIGHT
 - PANIC ALARM RESET/SILENCE - SEE ELECTRICAL FOR DETAILS
 - PUSH BUTTON FOR DOOR D05
 - PUSH BUTTON FOR DOOR D04
 - LOCATION OF FIRE ALARM PANEL
 - BENCH SEE DETAIL - A7.21
 - KEY CONTROL CABINET - CONFIRM LOCATION WITH CONSULTANT PRIOR TO MOUNTING
 - WHITE BOARD - CENTER ON WALL AND MOUNT 1000mm ABOVE FLOOR

- WHITE BOARD - FINAL LOCATION TO BE SITE DETERMINED MOUNT 1000mm ABOVE FLOOR
- RADIO TOWER PAD - SEE SPECIFICATION FOR DETAILS
- CONCRETE PAD FOR AIR CONDITIONERS
- AIR CONDITIONER CHAIN LINK FENCE - 2.43 M HIGH C/W 1.0M GATE
- RADIO TOWER CHAIN LINK FENCE - 2.43M HIGH C/W 2.0M WIDE GATES
- 150 GRAVEL ON WEED MAT AROUND TOWER BASE
- 1000 X 612 MECHANICAL ACCESS SEE DETAIL 3 SHEET A4.4
- HOSE REEL - FOR CELL AREA
- EYE WASH STATION SEE DETAIL A7.33
- HOLDING PIT FOR GARAGE 600X600X400
- ADD 1 EXTRA LAYER OF 18MM DRYWALL TO ENTIRE CEILING
- ADD 1 LAYER OF PAINTED 18MM GIB PLYWOOD TO INTERIOR WALLS OF ENTIRE ROOM
- ADD CELL NUMBER TO WALL SEE INTERIOR ELEVATIONS
- INSTALL RULER FOR MEASUREMENT RULER TO BE MIN 2.0M AND 50mm WIDE WITH BOTH METRIC AND IMPERIAL DESIGNATIONS. RULER TO BE GLUED TO BLOCK WALL
- CRANAL SPACE ACCESS
- CO2 FIRE EXTINGUISHER 10 KG

- NOTES:**
- CONCRETE CEILING TO HAVE SMOOTH ARCHITECTURAL FINISH TO ALLOW FOR PAINTING
 - ALL CORNERS TO HAVE CORNER GUARDS UNLESS THE CMU IS BULL NOSED

THIS DRAWING MUST NOT BE SCALED.
 THE GENERAL CONTRACTOR SHALL VERIFY ALL DIMENSIONS, DATUMS AND LEVELS PRIOR TO COMMENCEMENT OF WORK AND BE HELD RESPONSIBLE FOR REPORTING ANY DISCREPANCY OR OMISSION TO CAN-TEC SERVICES LTD. IMMEDIATELY.
 THIS DRAWING IS THE EXCLUSIVE PROPERTY OF CAN-TEC SERVICES LTD. AND CAN BE REPRODUCED ONLY WITH THE PERMISSION OF CAN-TEC SERVICES LTD. IN WHICH CASE THE REPRODUCTION MUST BEAR THEIR NAME AS THE ENGINEERING/DRAFTING FIRM.



PROJECT NO. 13-168-01-47
 SHEET NO. M1.0
 DATE (Y/M/D) 14/02/14
 SCALE AS NOTED
 LOCATION ISLAND LAKE, MANITOBA

ISSUED FOR ADDENDUM NO. 3 14/07/14
 ISSUED FOR TENDER 14/06/08
 ISSUED FOR 90% REVIEW 14/06/08
 ISSUED FOR 60% REVIEW 14/06/08
 ISSUED FOR 30% REVIEW 14/06/08

SEAL BY: [Signature]

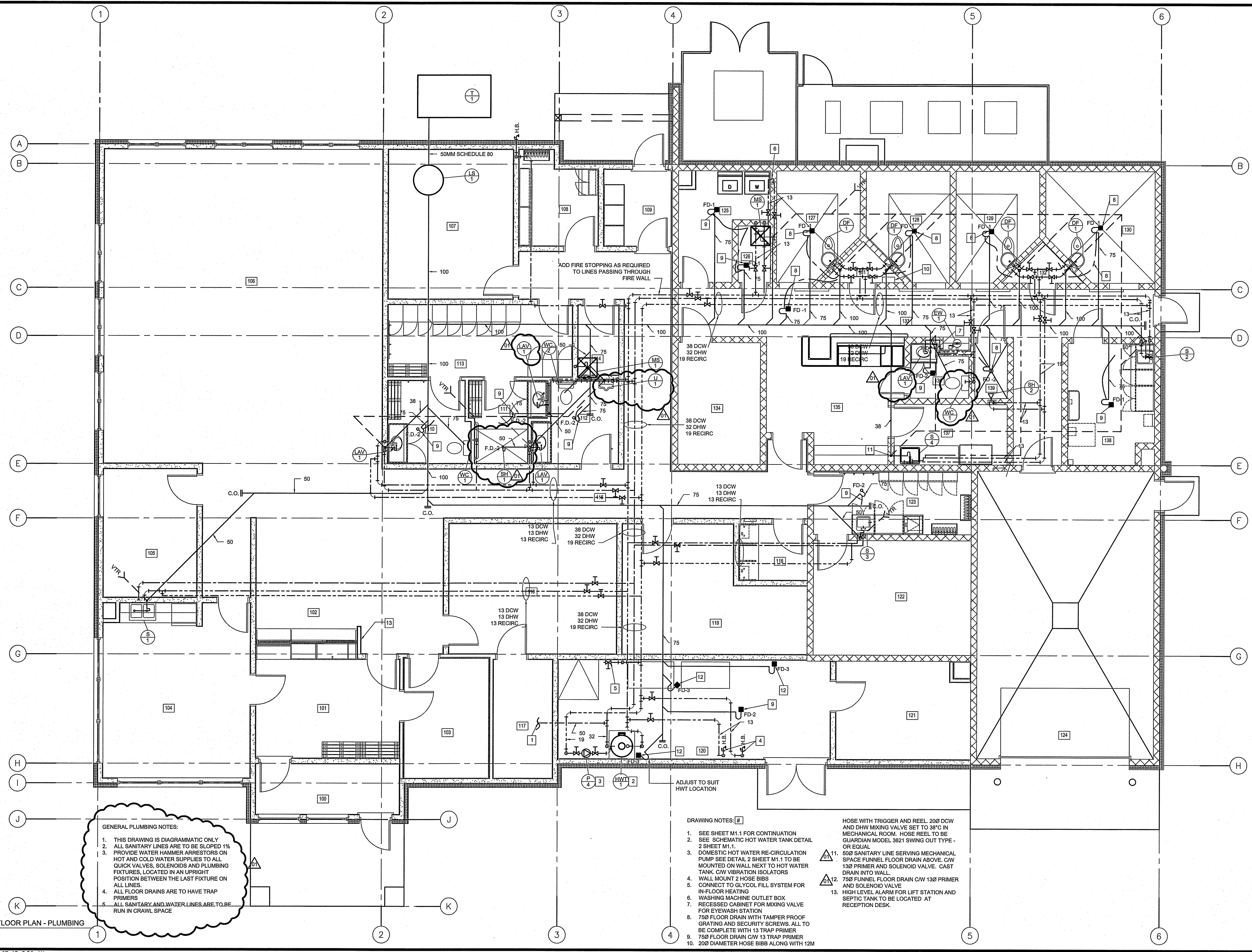
REVISION # 01
 13-168-01-47

CHECKED BY: JLS
 DRAWN BY: RS

DATE (Y/M/D) 14/02/14
 SCALE AS NOTED
 LOCATION ISLAND LAKE, MANITOBA

TENDER
M1.0
 REVISION #: 01

JOB NO. 13-168-01-47



GENERAL PLUMBING NOTES:

- THIS DRAWING IS DIAGRAMMATIC ONLY
- ALL SANITARY LINES ARE TO BE SLOPED 1%
- PROVIDE WATER HAMMER ARRESTORS ON HOT AND COLD WATER SUPPLIES TO ALL QUICK VALVES, SOLENOIDS AND PLUMBING FIXTURES, LOCATED IN AN UPRIGHT POSITION BETWEEN THE LAST FIXTURE ON ALL LINES.
- ALL FLOOR DRAINS ARE TO HAVE TRAP PRIMERS
- ALL SANITARY AND WATER LINES ARE TO BE RUN IN CRAWL SPACE

DRAWING NOTES:

- SEE SHEET M1.1 FOR CONTINUATION
- SEE SCHEMATIC HOT WATER TANK DETAIL 2 SHEET M1.1.
- DOMESTIC HOT WATER RE-CIRCULATION PUMP SEE DETAIL 2 SHEET M1.1 TO BE MOUNTED ON WALL NEXT TO HOT WATER TANK. CW VIBRATION ISOLATORS
- WALL MOUNT 2 HOSE BIBS
- CONNECT TO GLYCOL FILL SYSTEM FOR IN-FLOOR HEATING
- WASHING MACHINE OUTLET BOX
- RECESSED CABINET FOR MIXING VALVE FOR EYEWASH STATION
- 750 FLOOR DRAIN WITH TAMPER PROOF GRATING AND SECURITY SCREWS. ALL TO BE COMPLETE WITH 13 TRAP PRIMER
- 750 FLOOR DRAIN CW 13 TRAP PRIMER
- 200 DIAMETER HOSE BIB ALONG WITH 12M

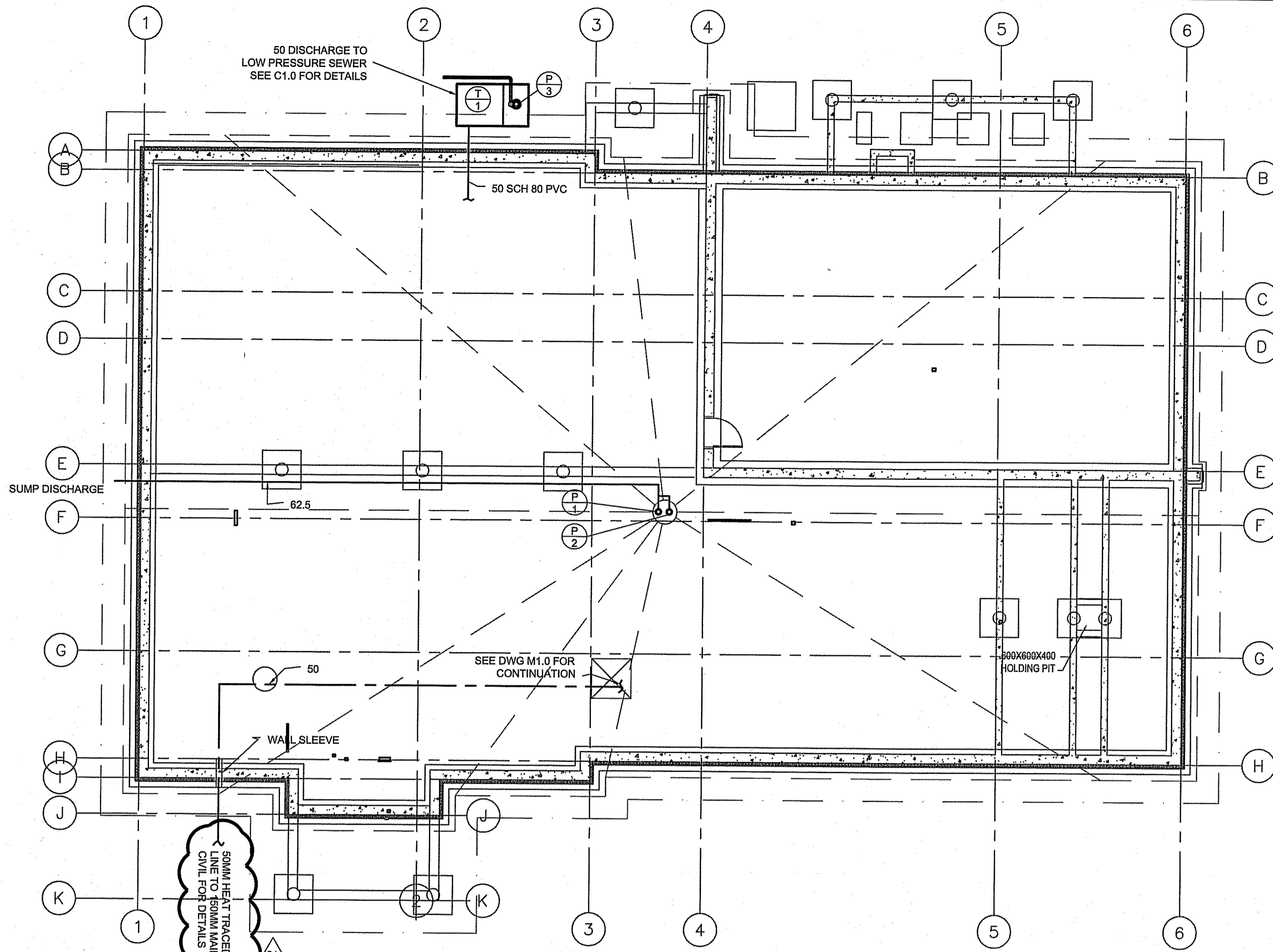
HOSE WITH TRIGGER AND REEL 200 DCW AND DHW MIXING VALVE SET TO 38°C IN MECHANICAL ROOM. HOSE REEL TO BE GUARDIAN MODEL 3821 SWING OUT TYPE - OR EQUAL

11. 500 SANITARY LINE SERVING MECHANICAL SPACE FUNNEL FLOOR DRAIN ABOVE. CW 130 PRIMER AND SOLENOID VALVE. CAST DRAIN INTO WALL

12. 750 FUNNEL FLOOR DRAIN CW 130 PRIMER AND SOLENOID VALVE

13. HIGH LEVEL ALARM FOR LIFT STATION AND SEPTIC TANK TO BE LOCATED AT RECEPTION DESK.

1 MAIN FLOOR PLAN - PLUMBING
 M1.0 SCALE: 1:50

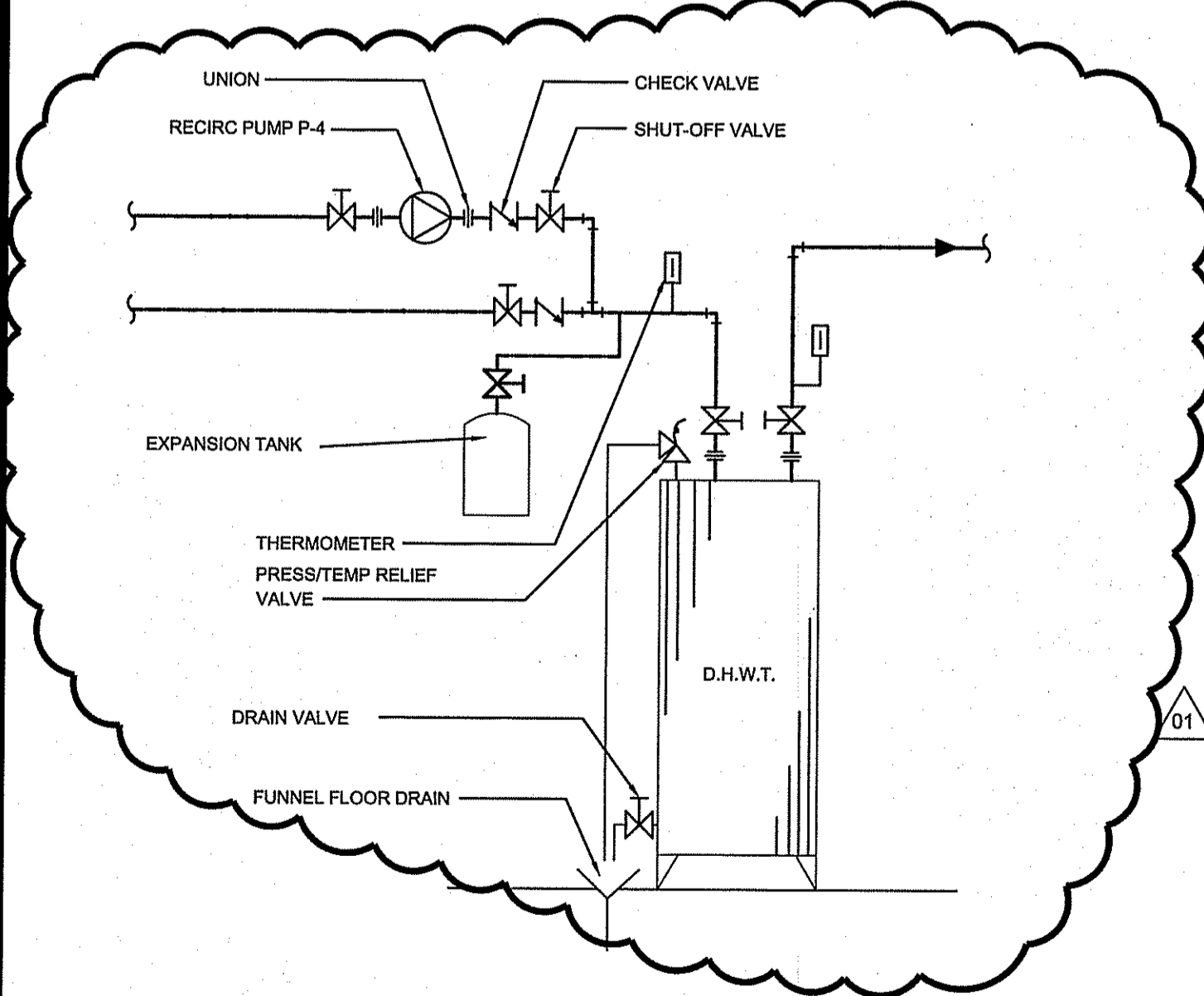
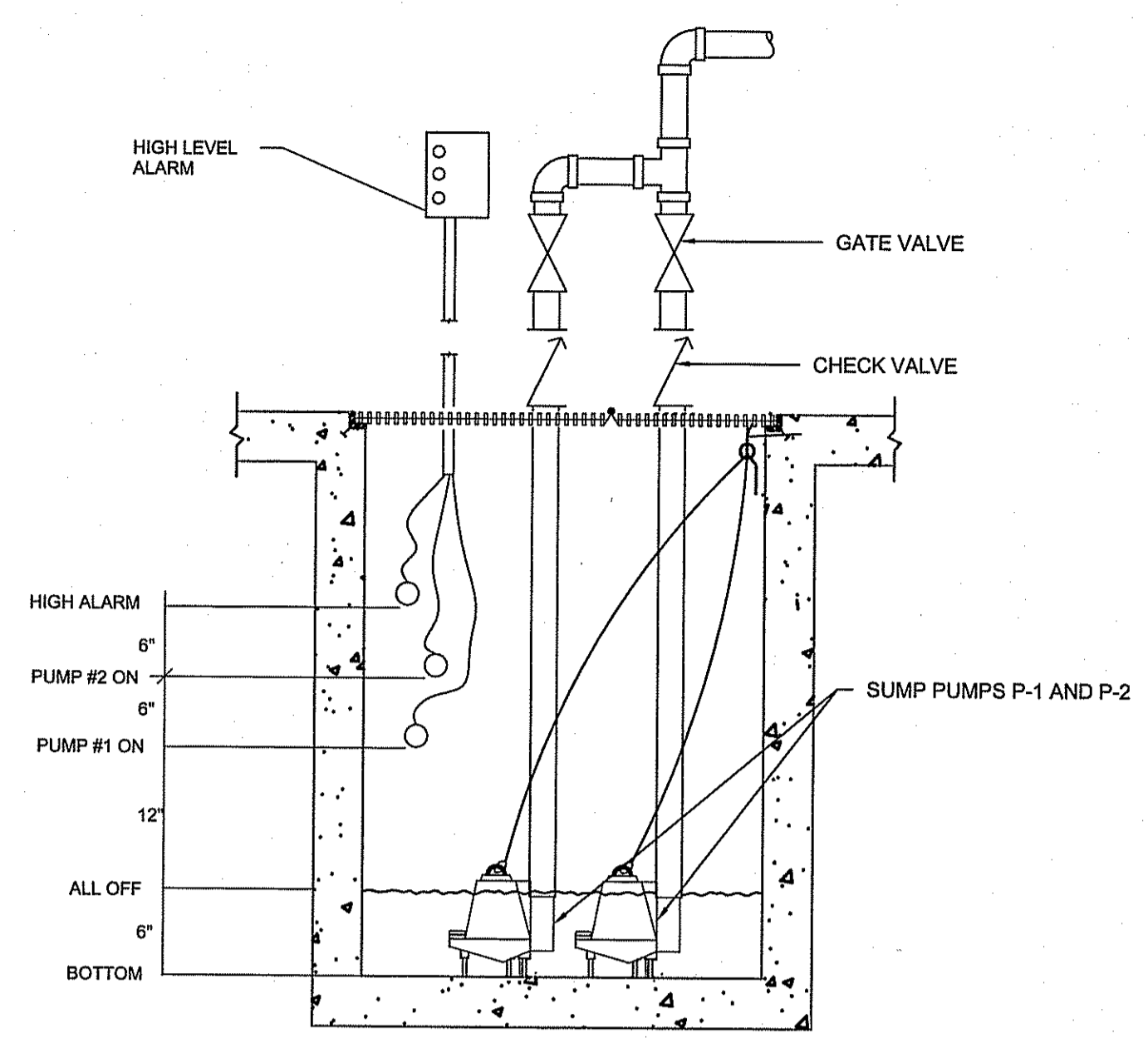


1 CRAWL SPACE PLUMBING PLAN
M1.1(M1.1) SCALE: 1:100

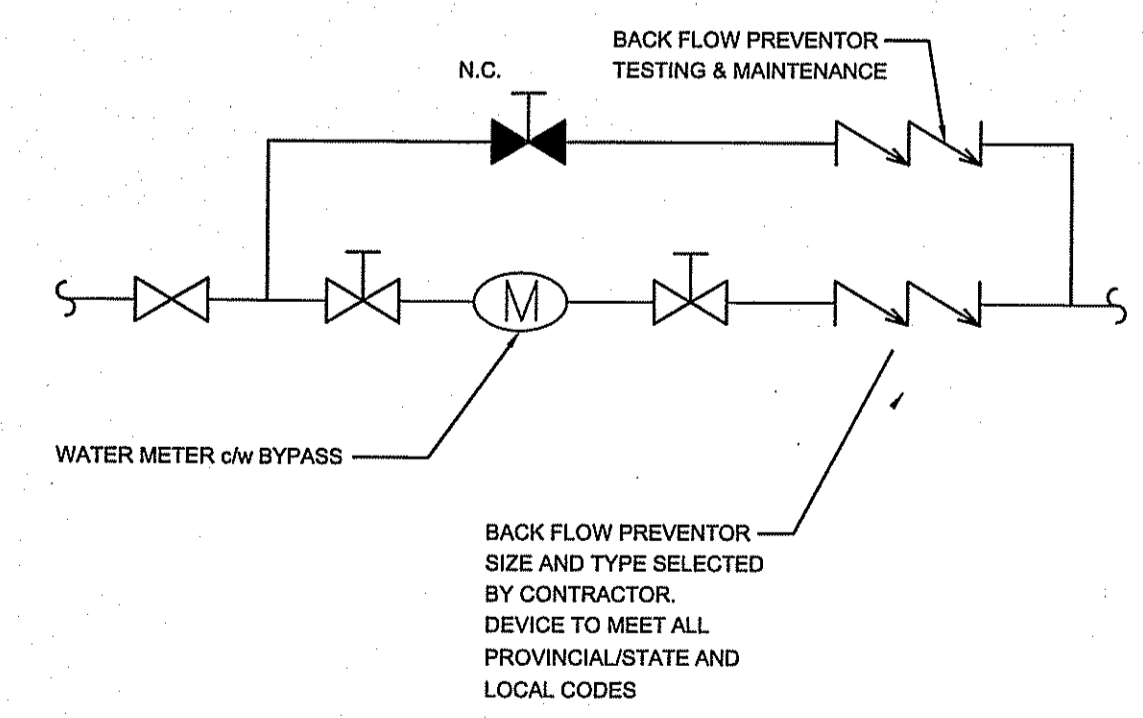
PLUMBING FIXTURE CONNECTION SIZES					
SYMBOL	NAME	WATER HOT	WATER COLD	WASTE	VENT
DF-1	DETENTION FIXTURE	130	400	1000	500
WC-1	WATER CLOSET		120	750	500
WC-2	WATER CLOSET		120	750	500
WC-3	WATER CLOSET		120	750	500
LAV-1	LAVATORIES	120	120	380	380
LAV-2	LAVATORIES	120	120	380	380
LAV-3	LAVATORIES	120	120	380	380
SH-1	SHOWER	120	120	380	380
SH-2	SHOWER	120	120	380	380
	CLOTHES WASHER	120	120	380	380
MS-1	MOP SINK	120	120	500	500
S-1, S-2	SINK	120	120	380	380
S-3	SINK	120	120	500	500
F-1	FLOOR DRAIN			750 OR 500	

01

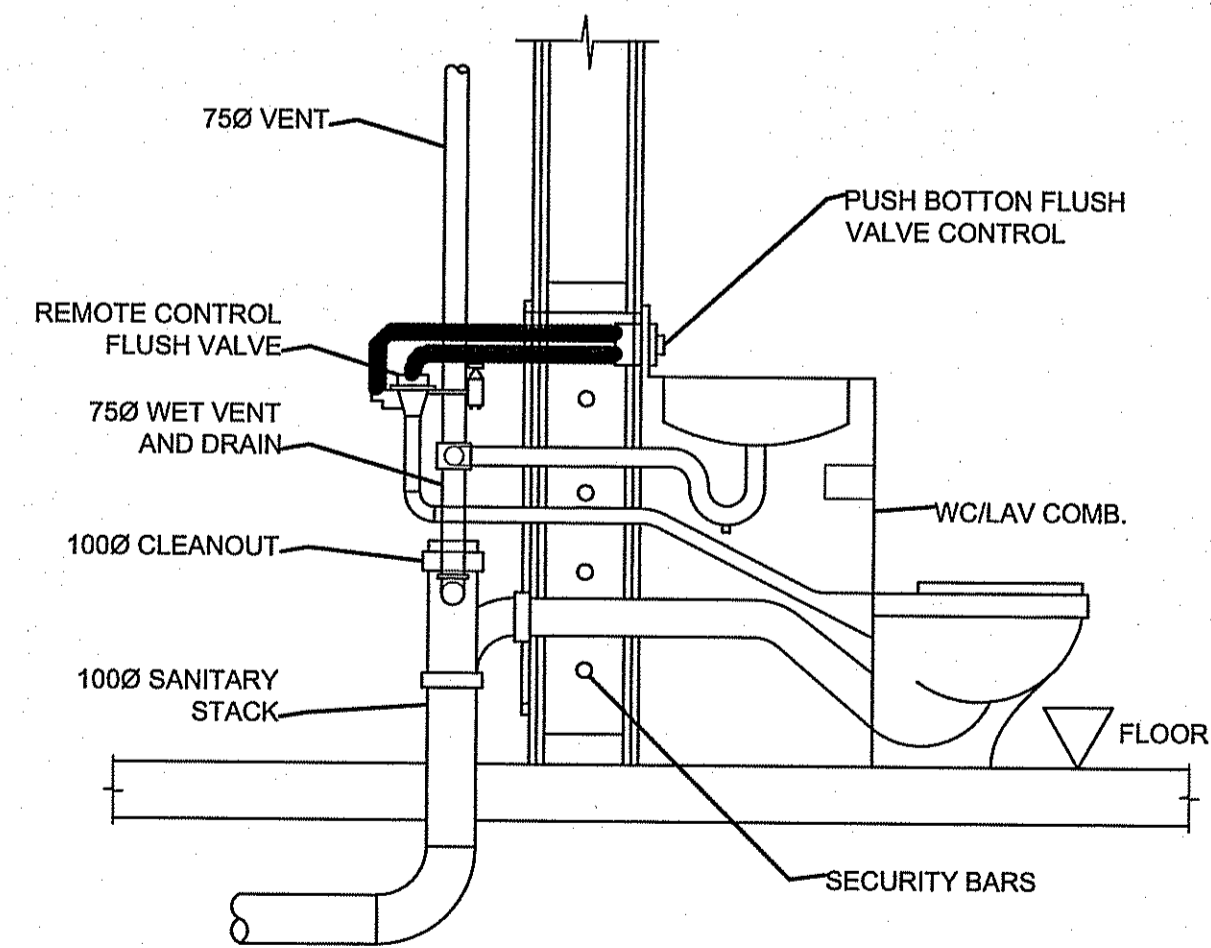
6 TYPICAL SUMP PUMP
M1.1(M1.1) SCALE: NTS



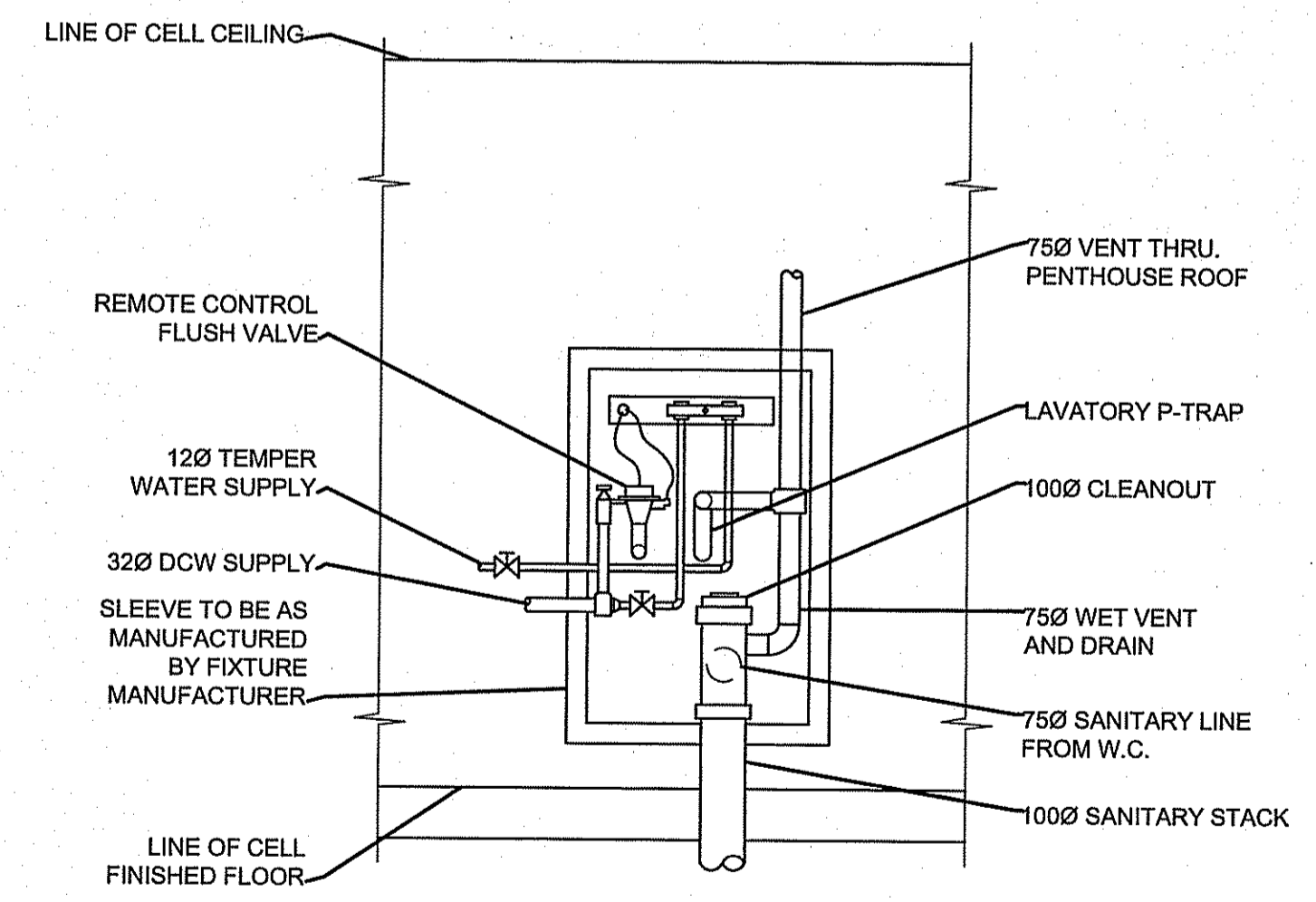
2 HOT WATER HEATER SCHEMATIC
M1.1(M1.1) SCALE: NTS



3 TYPICAL WATER SERVICE CONNECTION
M1.1(M1.1) SCALE: NTS

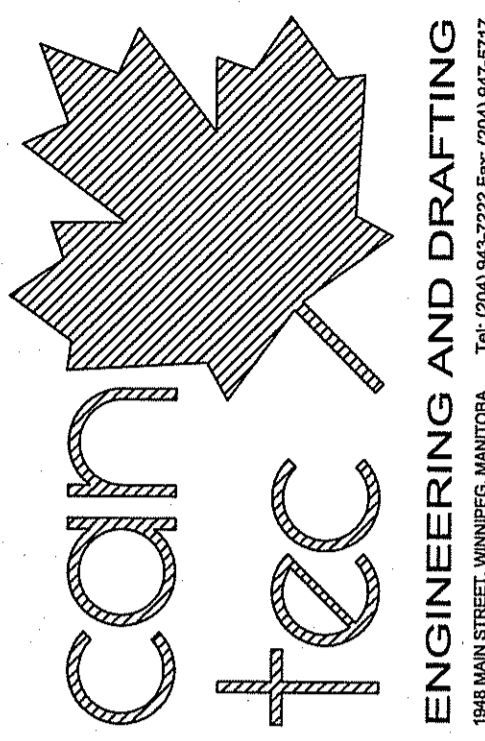


4 TYPICAL SECTION THROUGH CELL FIXTURE
M1.1(M1.1) SCALE: NTS



5 TYPICAL REAR VIEW OF CELL FIXTURE
M1.1(M1.1) SCALE: NTS

THIS DRAWING MUST NOT BE SCALED.
THE GENERAL CONTRACTOR SHALL VERIFY ALL DIMENSIONS, DATUMS AND LEVELS PRIOR TO COMMENCEMENT OF WORK AND IS HELD RESPONSIBLE FOR REPORTING ANY DISCREPANCY OR OMISSION TO CAN-TEC SERVICES LTD. IMMEDIATELY.
THIS DRAWING IS THE EXCLUSIVE PROPERTY OF CAN-TEC SERVICES LTD. AND CAN BE REPRODUCED ONLY WITH THE PERMISSION OF CAN-TEC SERVICES LTD. IN WHICH CASE THE REPRODUCTION MUST BEAR THEIR NAME AS THE ENGINEERING/DRAFTING FIRM.



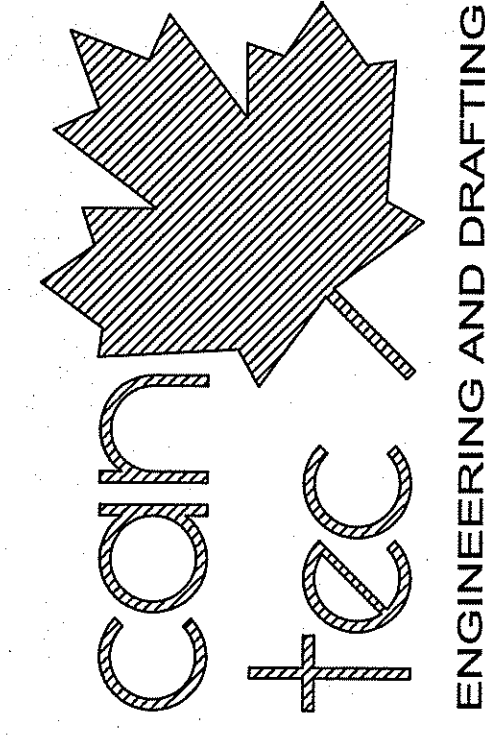
ISSUED FOR TENDER 14.08.06
ISSUED FOR 95% REVIEW 14.08.09
ISSUED FOR 85% REVIEW 14.08.09
ISSUED FOR 50% REVIEW 14.08.09
REV. # BY DATE (YY-MM-DD) BY
00
01
02
03
04
05
06
07
08
09
10
11
12
13
14
15
16
17
18
19
20
21
22
23
24
25
26
27
28
29
30
31
32
33
34
35
36
37
38
39
40
41
42
43
44
45
46
47
48
49
50
51
52
53
54
55
56
57
58
59
60
61
62
63
64
65
66
67
68
69
70
71
72
73
74
75
76
77
78
79
80
81
82
83
84
85
86
87
88
89
90
91
92
93
94
95
96
97
98
99
100

SEALED BY:

PROJECT TITLE: FACILITY BUILDING
SHEET TITLE: CRAWL SPACE PLUMBING PLAN AND DETAILS
DATE (YY-MM-DD): 14.02.14
SCALE: AS NOTED
LOCATION: ISLAND LAKE, MANITOBA
DRAWN BY: RS
CHECKED BY: JLS

TENDER
M1.1
REVISION #: 00
JOB NO. 13-168-01-47

THIS DRAWING MUST NOT BE SCALED.
 THE GENERAL CONTRACTOR SHALL VERIFY ALL DIMENSIONS, DATUMS AND LEVELS PRIOR TO COMMENCEMENT OF WORK AND IS HELD RESPONSIBLE FOR REPORTING ANY DISCREPANCY OR OMISSION TO CAN-TEC SERVICES LTD. IMMEDIATELY.
 THIS DRAWING IS THE EXCLUSIVE PROPERTY OF CAN-TEC SERVICES LTD. AND CAN BE REPRODUCED ONLY WITH THE PERMISSION OF CAN-TEC SERVICES LTD. IN WHICH CASE THE REPRODUCTION MUST BEAR THEIR NAME AS THE ENGINEERING DRAFTING FIRM.
<http://www.can-tec-services.com>



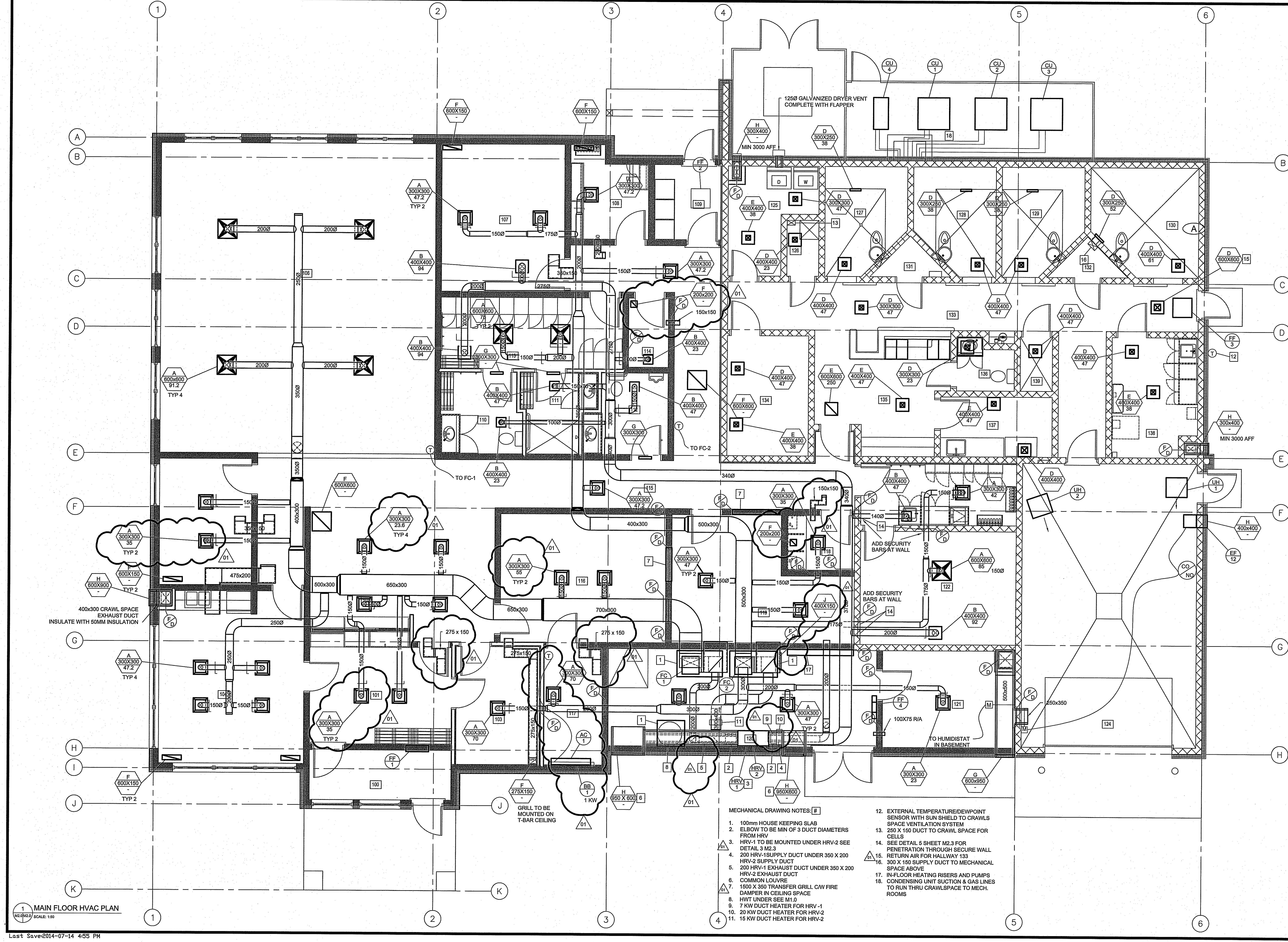
108 BAY STREET, WINNIPEG, MANITOBA
 TEL: (204) 942-2222 FAX: (204) 942-6777
<http://www.can-tec-services.com>

ISSUED FOR ADDENDUM NO. 3 14 OCT 14
 ISSUED FOR TENDER 14 OCT 14
 ISSUED FOR 50% REVIEW 14 OCT 14
 ISSUED FOR 35% REVIEW 14 OCT 14
 DATE (YY MM DD) REV #

SEAL BY:

CHECKED BY: JLS
 DRAWN BY: RS
 SCALE: AS NOTED
 DATE (YY MM DD): 14 02 14
 LOCATION: ISLAND LAKE, MANITOBA

PROJECT TITLE: FACILITY BUILDING
 SHEET TITLE: MAIN FLOOR HVAC
 REVISION #: M2.0
 JOB NO: 13-168-01-47

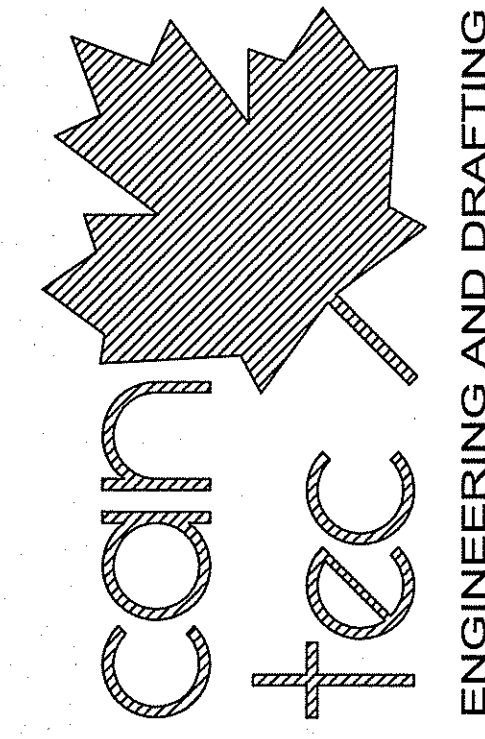


- MECHANICAL DRAWING NOTES: #
- 100mm HOUSE KEEPING SLAB
 - ELBOW TO BE MIN OF 3 DUCT DIAMETERS FROM HRV
 - HRV-1 TO BE MOUNTED UNDER HRV-2 SEE DETAIL 3 M2.3
 - 200 HRV-1 SUPPLY DUCT UNDER 350 X 200 HRV-2 SUPPLY DUCT
 - 200 HRV-1 EXHAUST DUCT UNDER 350 X 200 HRV-2 EXHAUST DUCT
 - COMMON LOUVRE
 - 1500 X 350 TRANSFER GRILL CAW FIRE DAMPER IN CEILING SPACE
 - HWT UNDER SEE M1.0
 - 7 KW DUCT HEATER FOR HRV-1
 - 20 KW DUCT HEATER FOR HRV-2
 - 15 KW DUCT HEATER FOR HRV-2
 - EXTERNAL TEMPERATURE/DEWPOINT SENSOR WITH SUN SHIELD TO CRAWLS SPACE VENTILATION SYSTEM
 - 250 X 150 DUCT TO CRAWL SPACE FOR CELLS
 - SEE DETAIL 5 SHEET M2.3 FOR PENETRATION THROUGH SECURE WALL
 - RETURN AIR FOR HALLWAY 133
 - 300 X 150 SUPPLY DUCT TO MECHANICAL SPACE ABOVE
 - IN-FLOOR HEATING RISERS AND PUMPS
 - CONDENSING UNIT SUCTION & GAS LINES TO RUN THRU CRAWLSPACE TO MECH. ROOMS

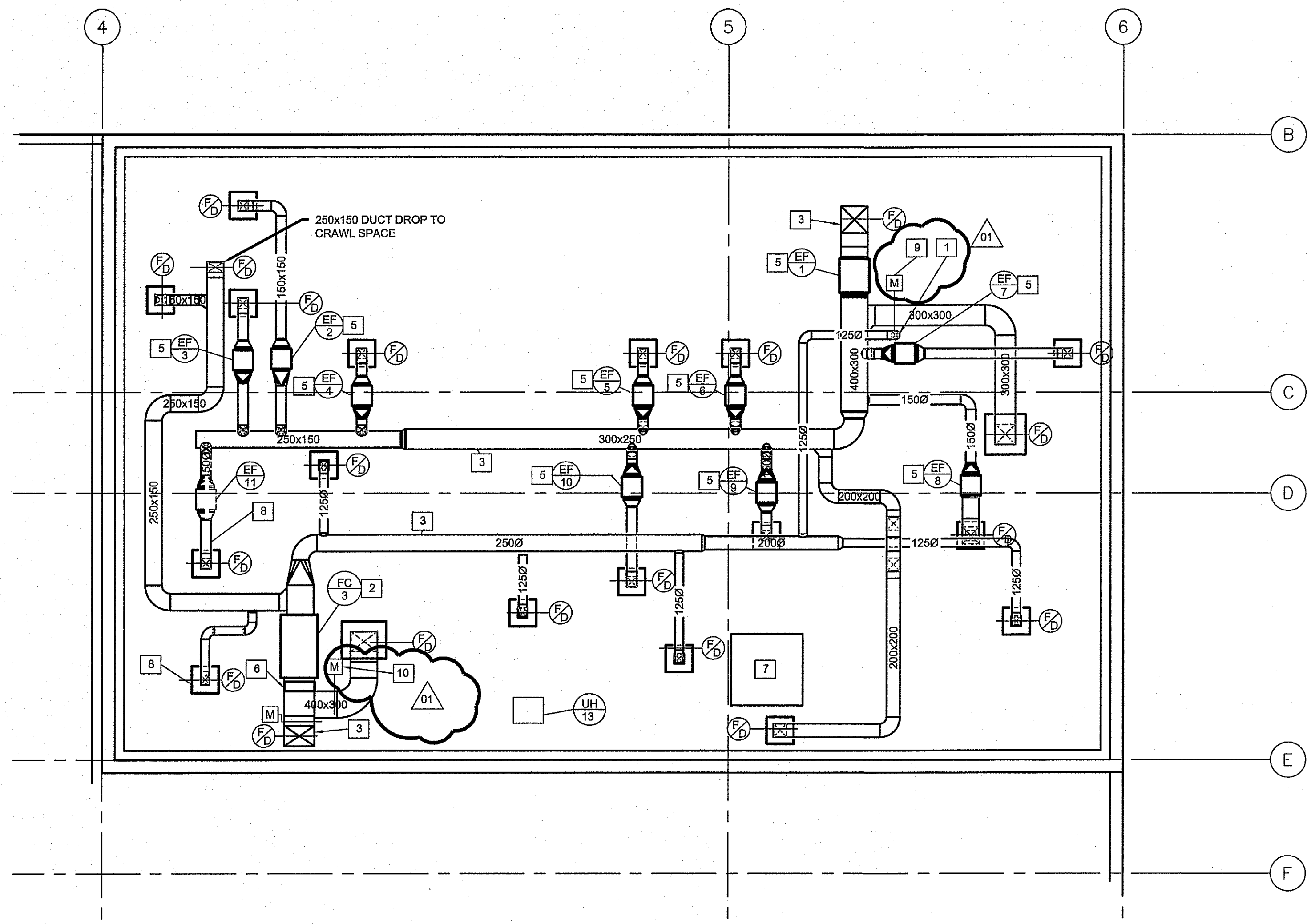
1 MAIN FLOOR HVAC PLAN
 M2.0 SCALE: 1:50
 Last Save: 2014-07-14 4:55 PM

TENDER
M2.0
 REVISION #: 01
 JOB NO: 13-168-01-47

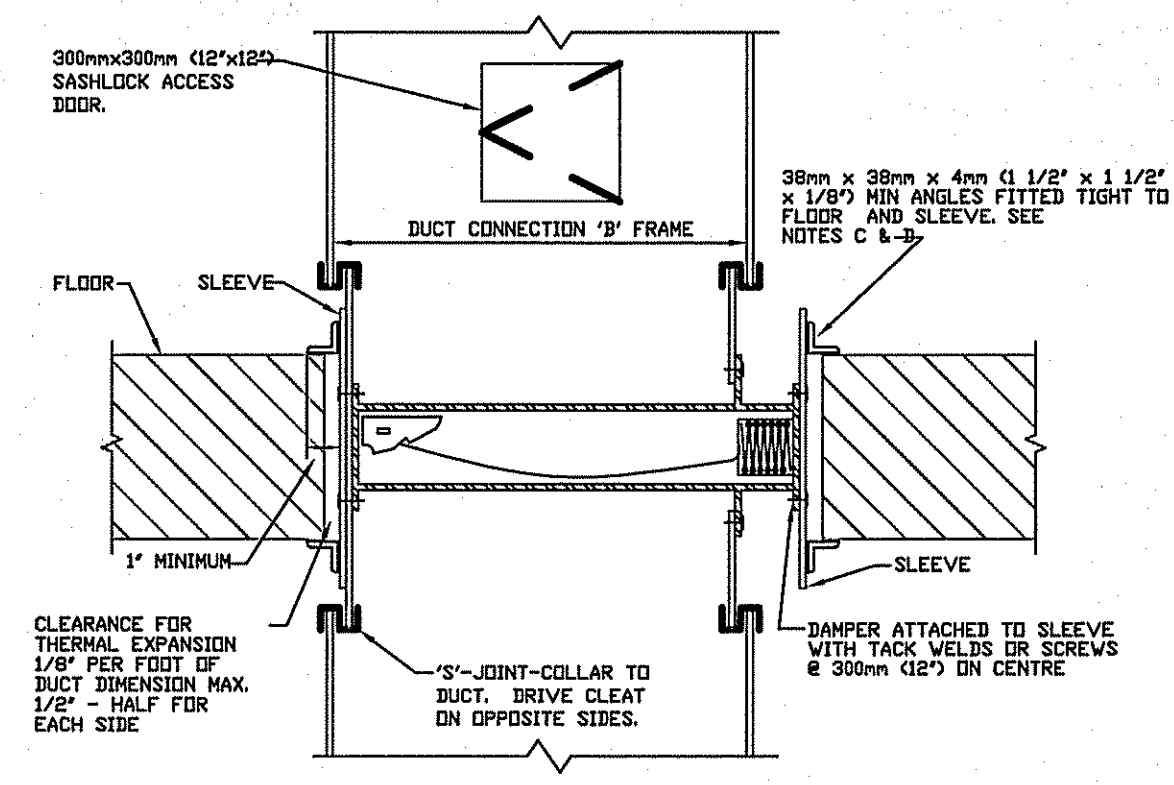
THIS DRAWING MUST NOT BE SCALED.
 THE GENERAL CONTRACTOR SHALL VERIFY ALL DIMENSIONS, DATUMS AND LEVELS PRIOR TO COMMENCEMENT OF WORK AND IS HELD RESPONSIBLE FOR REPORTING ANY DISCREPANCY OR OMISSION TO CAN-TEC SERVICES LTD. IMMEDIATELY.
 THIS DRAWING IS THE EXCLUSIVE PROPERTY OF CAN-TEC SERVICES LTD. AND CAN BE REPRODUCED ONLY WITH THE PERMISSION OF CAN-TEC SERVICES LTD. IN WHICH CASE THE REPRODUCTION MUST BEAR THEIR NAME AS THE ENGINEERING/DRAFTING FIRM.



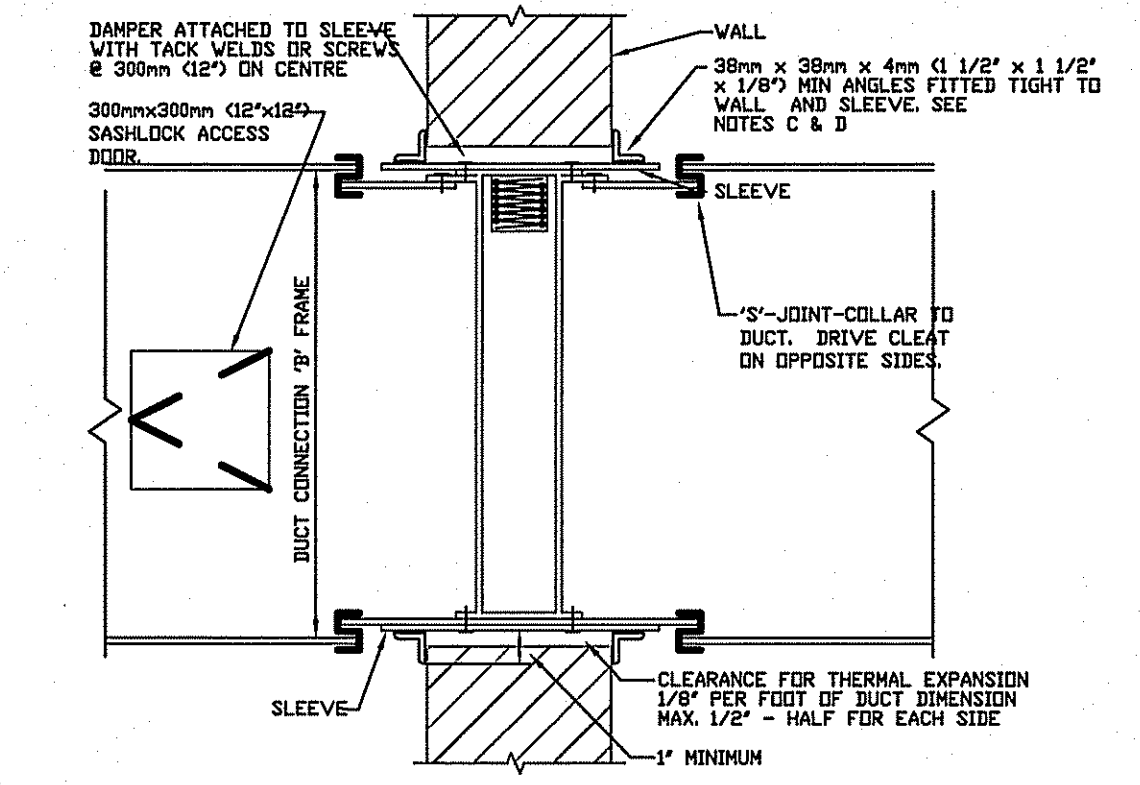
148 MAIN STREET, WINNIPEG, MANITOBA
 TEL: (204) 945-7722 FAX: (204) 941-5777
 WWW.CAN-TEC.COM
 REVISION: 01, 02, 03, 04, 05, 06, 07, 08, 09, 10, 11, 12, 13, 14, 15, 16, 17, 18, 19, 20, 21, 22, 23, 24, 25, 26, 27, 28, 29, 30, 31, 32, 33, 34, 35, 36, 37, 38, 39, 40, 41, 42, 43, 44, 45, 46, 47, 48, 49, 50, 51, 52, 53, 54, 55, 56, 57, 58, 59, 60, 61, 62, 63, 64, 65, 66, 67, 68, 69, 70, 71, 72, 73, 74, 75, 76, 77, 78, 79, 80, 81, 82, 83, 84, 85, 86, 87, 88, 89, 90, 91, 92, 93, 94, 95, 96, 97, 98, 99, 100, 101, 102, 103, 104, 105, 106, 107, 108, 109, 110, 111, 112, 113, 114, 115, 116, 117, 118, 119, 120, 121, 122, 123, 124, 125, 126, 127, 128, 129, 130, 131, 132, 133, 134, 135, 136, 137, 138, 139, 140, 141, 142, 143, 144, 145, 146, 147, 148, 149, 150, 151, 152, 153, 154, 155, 156, 157, 158, 159, 160, 161, 162, 163, 164, 165, 166, 167, 168, 169, 170, 171, 172, 173, 174, 175, 176, 177, 178, 179, 180, 181, 182, 183, 184, 185, 186, 187, 188, 189, 190, 191, 192, 193, 194, 195, 196, 197, 198, 199, 200, 201, 202, 203, 204, 205, 206, 207, 208, 209, 210, 211, 212, 213, 214, 215, 216, 217, 218, 219, 220, 221, 222, 223, 224, 225, 226, 227, 228, 229, 230, 231, 232, 233, 234, 235, 236, 237, 238, 239, 240, 241, 242, 243, 244, 245, 246, 247, 248, 249, 250, 251, 252, 253, 254, 255, 256, 257, 258, 259, 260, 261, 262, 263, 264, 265, 266, 267, 268, 269, 270, 271, 272, 273, 274, 275, 276, 277, 278, 279, 280, 281, 282, 283, 284, 285, 286, 287, 288, 289, 290, 291, 292, 293, 294, 295, 296, 297, 298, 299, 300, 301, 302, 303, 304, 305, 306, 307, 308, 309, 310, 311, 312, 313, 314, 315, 316, 317, 318, 319, 320, 321, 322, 323, 324, 325, 326, 327, 328, 329, 330, 331, 332, 333, 334, 335, 336, 337, 338, 339, 340, 341, 342, 343, 344, 345, 346, 347, 348, 349, 350, 351, 352, 353, 354, 355, 356, 357, 358, 359, 360, 361, 362, 363, 364, 365, 366, 367, 368, 369, 370, 371, 372, 373, 374, 375, 376, 377, 378, 379, 380, 381, 382, 383, 384, 385, 386, 387, 388, 389, 390, 391, 392, 393, 394, 395, 396, 397, 398, 399, 400, 401, 402, 403, 404, 405, 406, 407, 408, 409, 410, 411, 412, 413, 414, 415, 416, 417, 418, 419, 420, 421, 422, 423, 424, 425, 426, 427, 428, 429, 430, 431, 432, 433, 434, 435, 436, 437, 438, 439, 440, 441, 442, 443, 444, 445, 446, 447, 448, 449, 450, 451, 452, 453, 454, 455, 456, 457, 458, 459, 460, 461, 462, 463, 464, 465, 466, 467, 468, 469, 470, 471, 472, 473, 474, 475, 476, 477, 478, 479, 480, 481, 482, 483, 484, 485, 486, 487, 488, 489, 490, 491, 492, 493, 494, 495, 496, 497, 498, 499, 500, 501, 502, 503, 504, 505, 506, 507, 508, 509, 510, 511, 512, 513, 514, 515, 516, 517, 518, 519, 520, 521, 522, 523, 524, 525, 526, 527, 528, 529, 530, 531, 532, 533, 534, 535, 536, 537, 538, 539, 540, 541, 542, 543, 544, 545, 546, 547, 548, 549, 550, 551, 552, 553, 554, 555, 556, 557, 558, 559, 560, 561, 562, 563, 564, 565, 566, 567, 568, 569, 570, 571, 572, 573, 574, 575, 576, 577, 578, 579, 580, 581, 582, 583, 584, 585, 586, 587, 588, 589, 590, 591, 592, 593, 594, 595, 596, 597, 598, 599, 600, 601, 602, 603, 604, 605, 606, 607, 608, 609, 610, 611, 612, 613, 614, 615, 616, 617, 618, 619, 620, 621, 622, 623, 624, 625, 626, 627, 628, 629, 630, 631, 632, 633, 634, 635, 636, 637, 638, 639, 640, 641, 642, 643, 644, 645, 646, 647, 648, 649, 650, 651, 652, 653, 654, 655, 656, 657, 658, 659, 660, 661, 662, 663, 664, 665, 666, 667, 668, 669, 670, 671, 672, 673, 674, 675, 676, 677, 678, 679, 680, 681, 682, 683, 684, 685, 686, 687, 688, 689, 690, 691, 692, 693, 694, 695, 696, 697, 698, 699, 700, 701, 702, 703, 704, 705, 706, 707, 708, 709, 710, 711, 712, 713, 714, 715, 716, 717, 718, 719, 720, 721, 722, 723, 724, 725, 726, 727, 728, 729, 730, 731, 732, 733, 734, 735, 736, 737, 738, 739, 740, 741, 742, 743, 744, 745, 746, 747, 748, 749, 750, 751, 752, 753, 754, 755, 756, 757, 758, 759, 760, 761, 762, 763, 764, 765, 766, 767, 768, 769, 770, 771, 772, 773, 774, 775, 776, 777, 778, 779, 780, 781, 782, 783, 784, 785, 786, 787, 788, 789, 790, 791, 792, 793, 794, 795, 796, 797, 798, 799, 800, 801, 802, 803, 804, 805, 806, 807, 808, 809, 810, 811, 812, 813, 814, 815, 816, 817, 818, 819, 820, 821, 822, 823, 824, 825, 826, 827, 828, 829, 830, 831, 832, 833, 834, 835, 836, 837, 838, 839, 840, 841, 842, 843, 844, 845, 846, 847, 848, 849, 850, 851, 852, 853, 854, 855, 856, 857, 858, 859, 860, 861, 862, 863, 864, 865, 866, 867, 868, 869, 870, 871, 872, 873, 874, 875, 876, 877, 878, 879, 880, 881, 882, 883, 884, 885, 886, 887, 888, 889, 890, 891, 892, 893, 894, 895, 896, 897, 898, 899, 900, 901, 902, 903, 904, 905, 906, 907, 908, 909, 910, 911, 912, 913, 914, 915, 916, 917, 918, 919, 920, 921, 922, 923, 924, 925, 926, 927, 928, 929, 930, 931, 932, 933, 934, 935, 936, 937, 938, 939, 940, 941, 942, 943, 944, 945, 946, 947, 948, 949, 950, 951, 952, 953, 954, 955, 956, 957, 958, 959, 960, 961, 962, 963, 964, 965, 966, 967, 968, 969, 970, 971, 972, 973, 974, 975, 976, 977, 978, 979, 980, 981, 982, 983, 984, 985, 986, 987, 988, 989, 990, 991, 992, 993, 994, 995, 996, 997, 998, 999, 1000.



1 MECHANICAL MEZZANINE
 SCALE: 1:50

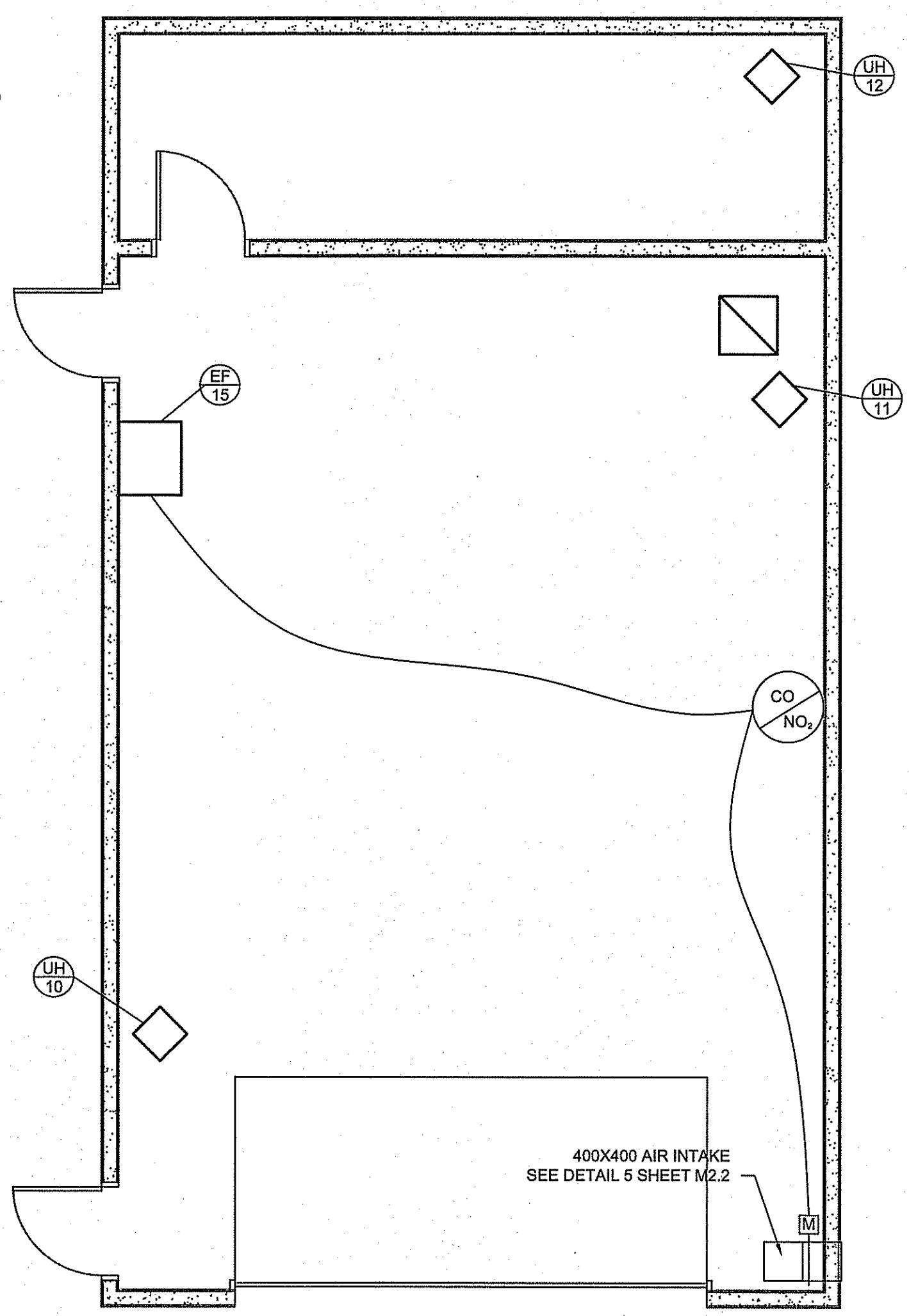


2 HORIZONTAL FIRE DAMPER TYPICAL DETAIL
 SCALE: NTS

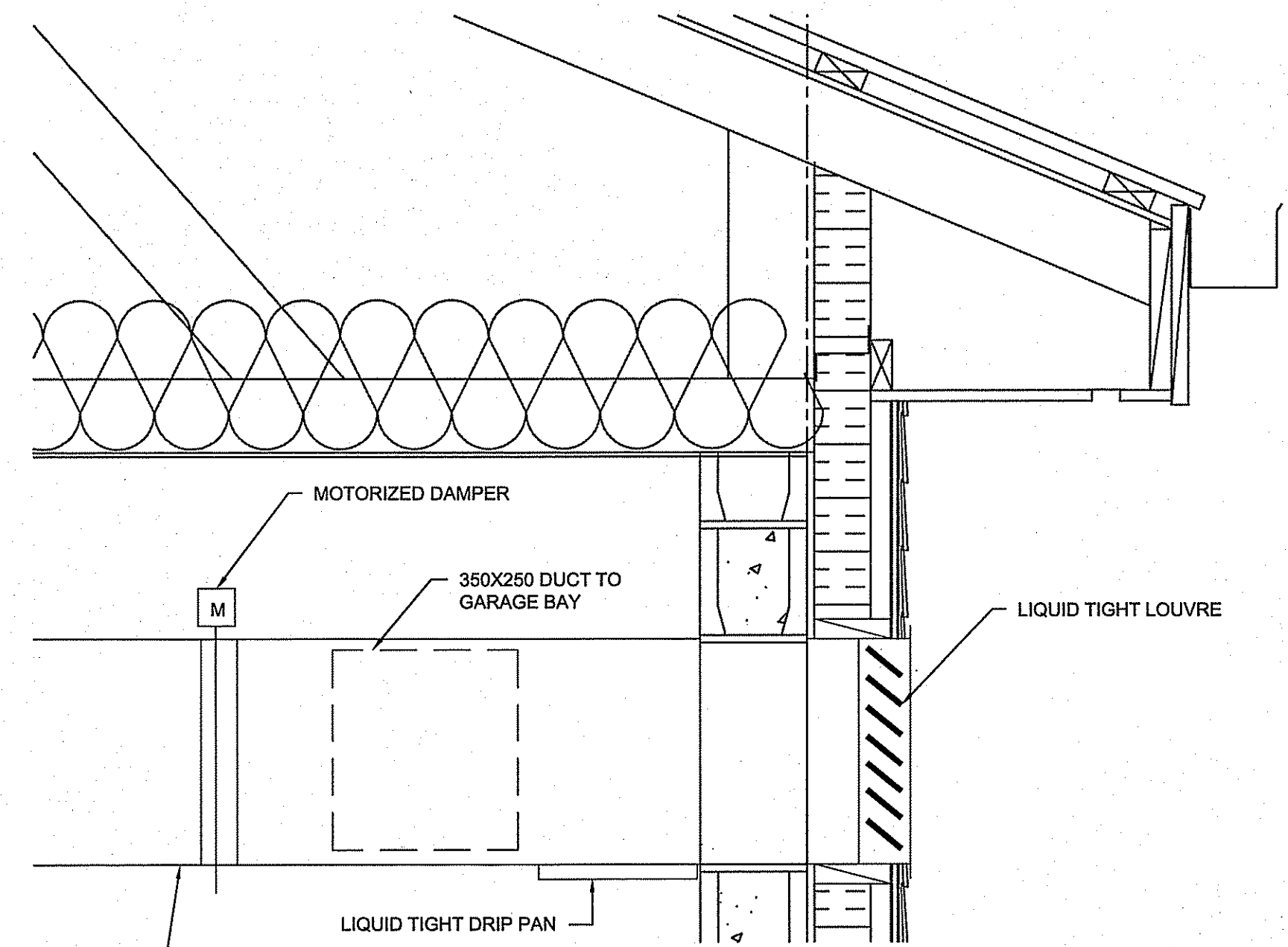


2 VERTICAL FIRE DAMPER TYPICAL DETAIL
 SCALE: NTS

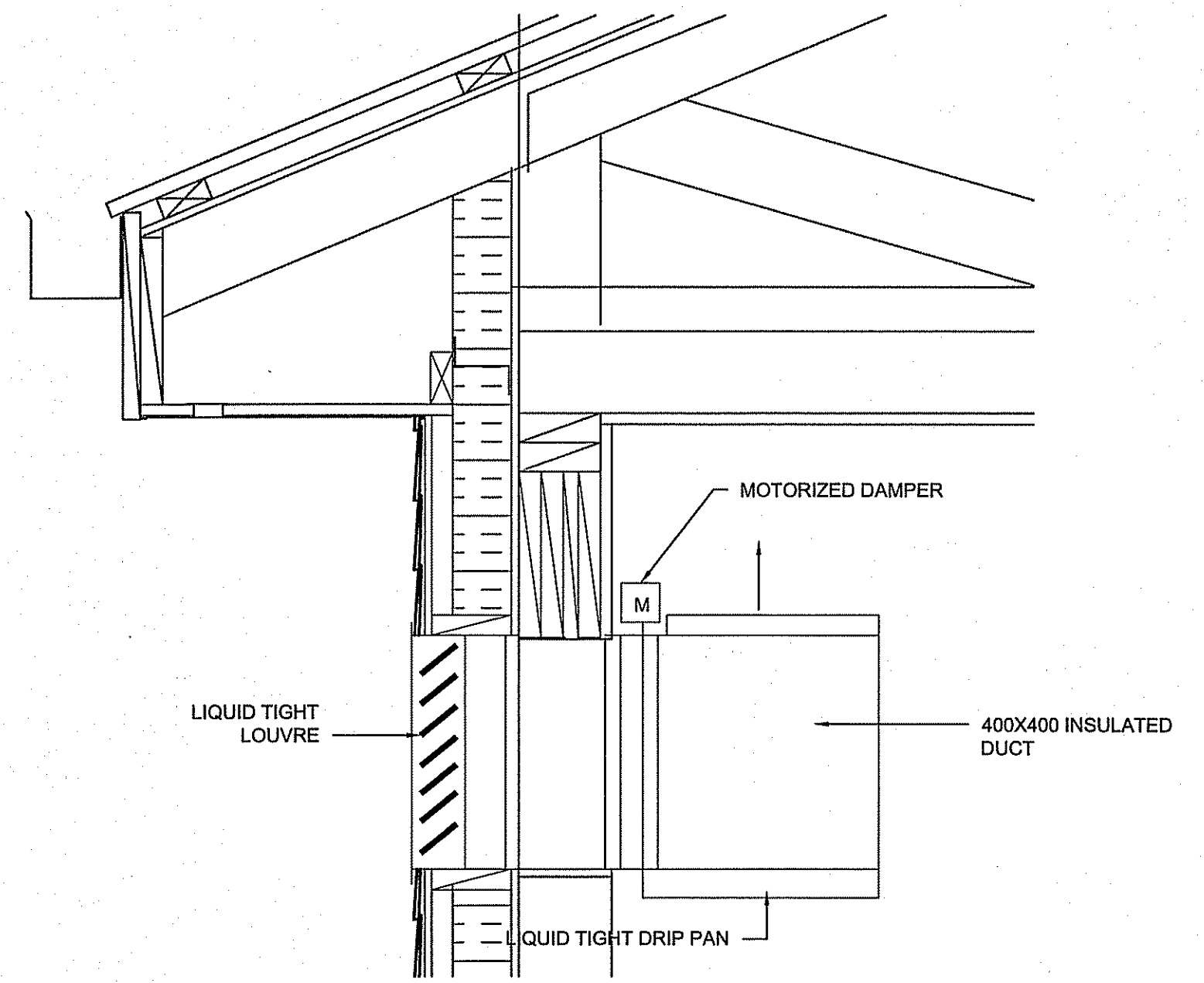
- DRAWING NOTES #
- DUCT INTO MECHANICAL SPACE BEHIND CELL. SEE M2.0 FOR CONTINUATION. C/W FIRE DAMPER
 - EF-1 AND FC-3 TO BE MOUNTED ON VIBRATION ISOLATORS AND ANCHORED TO CONCRETE FLOOR TO GOOSE NECK ON ROOF
 - ALL DUCTWORK IS TO BE MIN 100 OFF OF FLOOR AND SUPPORTED AS PER SPECIFICATIONS (TYPICAL ALL)
 - ALL EXHAUST FANS TO BE ON VIBRATION ISOLATORS
 - 10 KW DUCT HEATER
 - ACCESS HATCH
 - CO-ORDINATE FINAL LOCATION WITH ARCHITECTURAL TO FIT REFLECTED CEILING PLAN
 - CONTROL DAMPER FOR RELIEF AIR FOR EF-1 WHEN SOME (BUT NOT ALL) CELL EXHAUST FANS ARE SET TO LOW SPEED OR OFF
 - CONTROL DAMPER FOR R/A FOR FC-3 WHEN ALL CELL EXHAUST FANS ARE SET TO LOW OR OFF



6 GARAGE MECHANICAL
 SCALE: 1:50



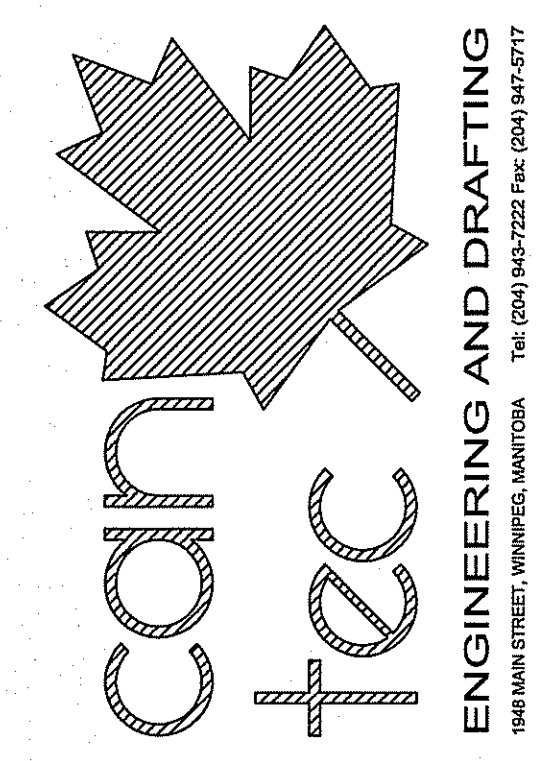
4 AIR INTAKE DETAIL - CMU WALL
 SCALE: NTS



5 AIR INTAKE DETAIL - WOOD WALL
 SCALE: NTS

PROJECT TITLE: FACILITY BUILDING
 SHEET TITLE: MECHANICAL MEZZANINE AND GARAGE MECHANICAL
 DATE (Y/M/D): 14 02 14
 SCALE: AS NOTED
 LOCATION: ISLAND LAKE, MANITOBA
 CHECKED BY: JLS
 DRAWN BY: RS
 TENDER: M2.2
 REVISION #: 01
 JOB NO.: 13-168-01-47

THIS DRAWING MUST NOT BE SCALED.
 THE GENERAL CONTRACTOR SHALL VERIFY ALL DIMENSIONS, DATUMS AND LEVELS PRIOR TO COMMENCEMENT OF WORK AND IS HELD RESPONSIBLE FOR REPORTING ANY DISCREPANCY OR OMISSION TO CAN-TEC SERVICES LTD. IMMEDIATELY.
 THIS DRAWING IS THE EXCLUSIVE PROPERTY OF CAN-TEC SERVICES LTD. AND CAN BE REPRODUCED ONLY WITH THE PERMISSION OF CAN-TEC SERVICES LTD. IN WHICH CASE THE REPRODUCTION MUST BEAR THEIR NAME AS THE ENGINEERING/DRAFTING FIRM.



ISSUED FOR ADDENDUM NO. 3 14.07.14
 ISSUED FOR TENDER 14.08.09
 ISSUED FOR 80% REVIEW 14.08.09
 ISSUED FOR 60% REVIEW 14.04.09
 ISSUED FOR 35% REVIEW 14.02.01

SEAL BY: _____

PROJECT TITLE: FACILITY BUILDING

SHEET TITLE: DETAILS

DATE (Y/M/D): 14.02.14

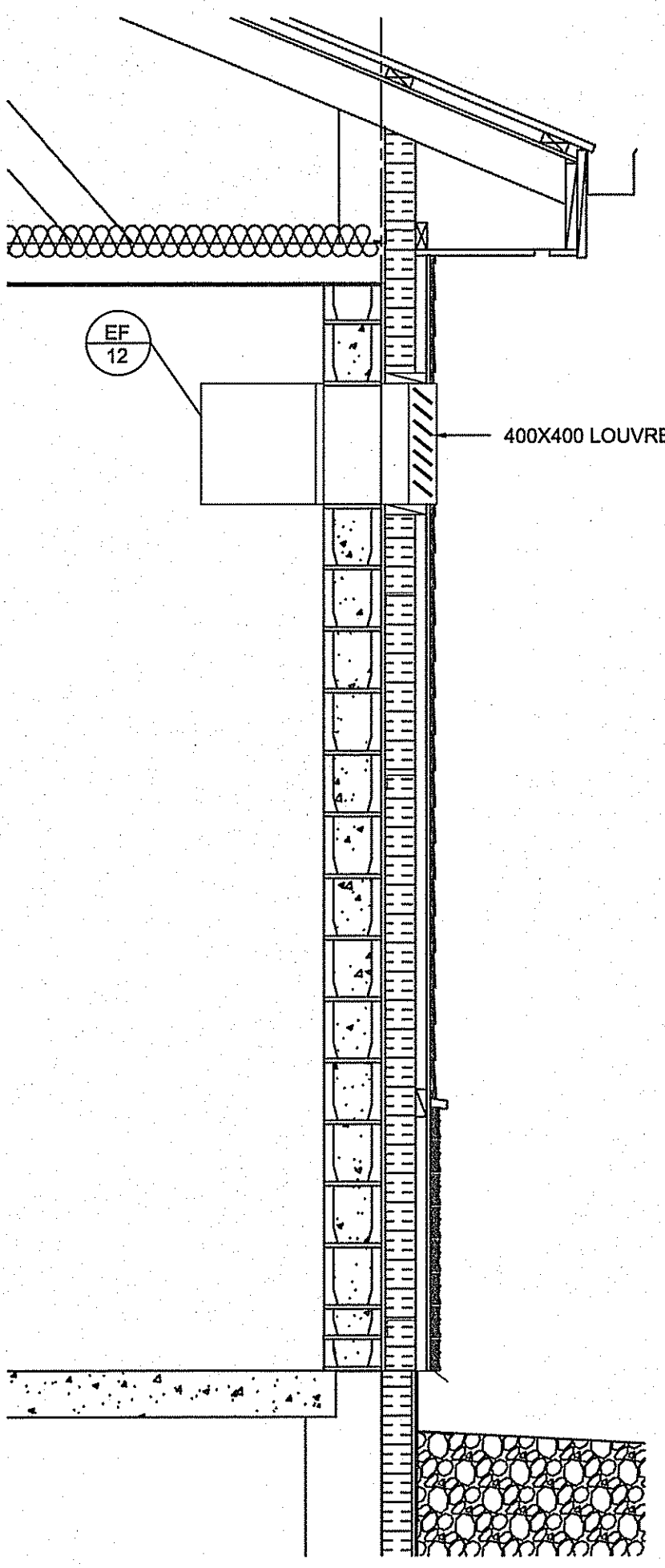
SCALE: AS NOTED

LOCATION: ISLAND LAKE, MANITOBA

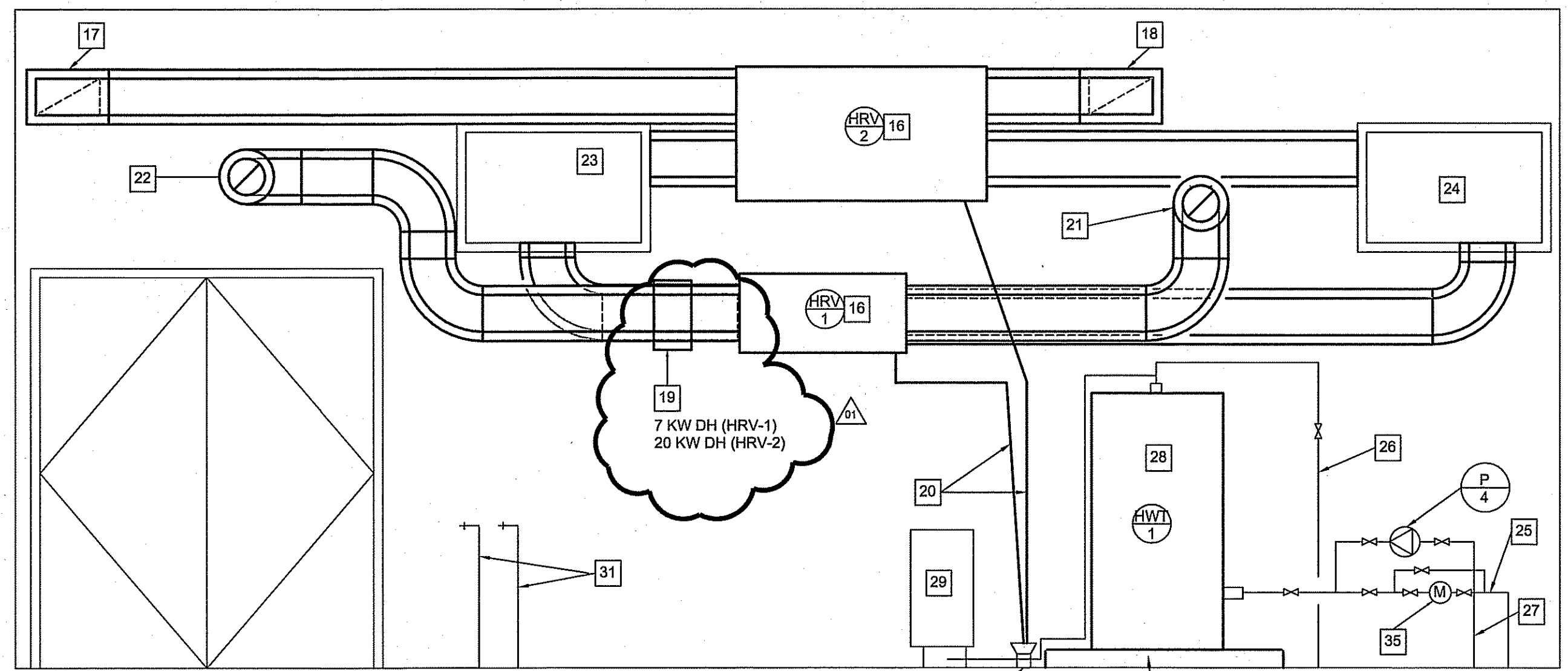
TENDER NO. M2.3

REVISION #: 00

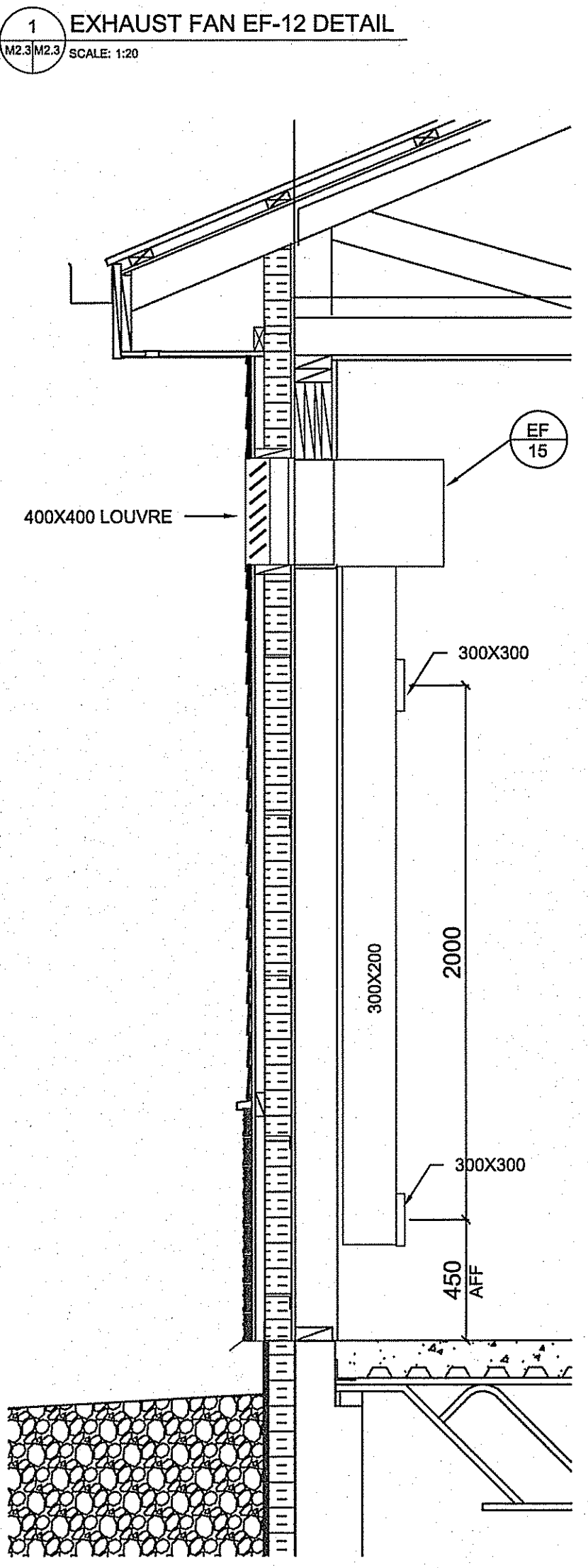
JOB NO. 13-168-01-47



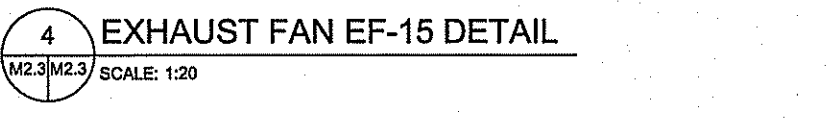
2 MECHANICAL ROOM EAST ELEVATION
 M2.3/M2.3 SCALE: 1:25



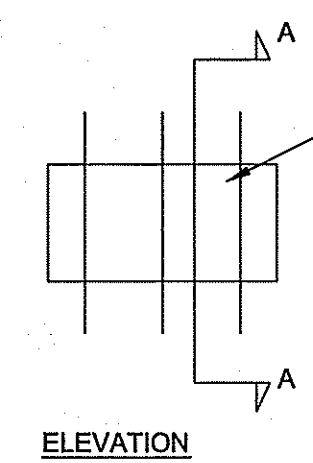
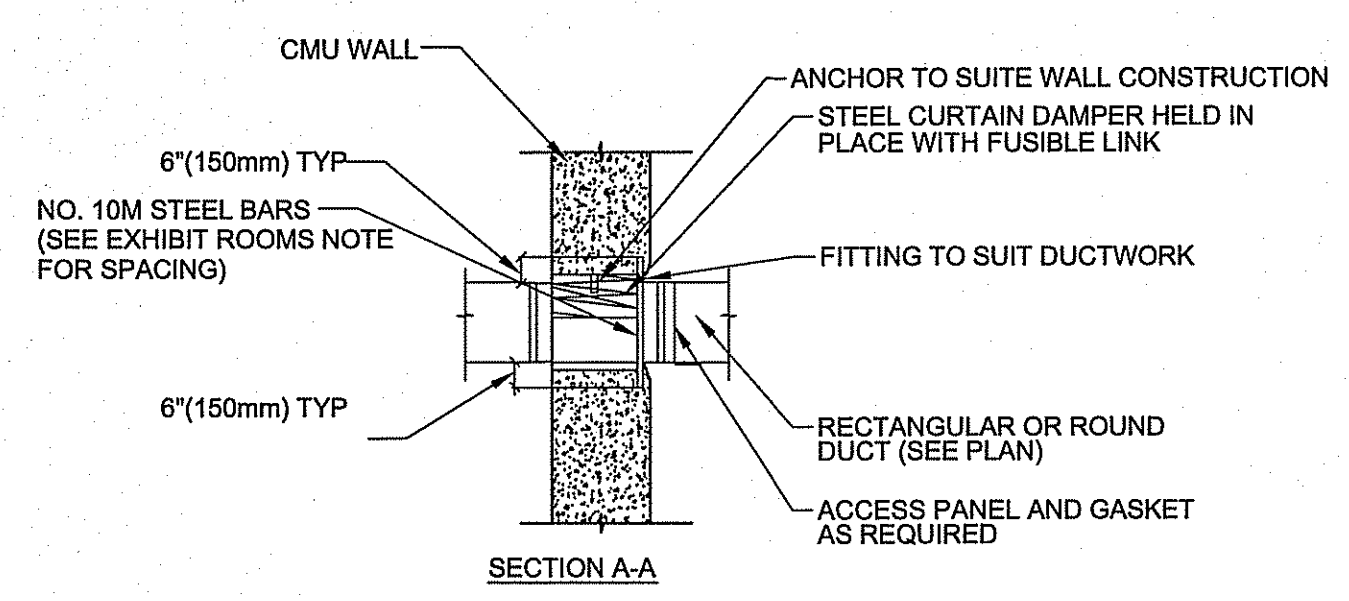
3 MECHANICAL ROOM WEST ELEVATION
 M2.3/M2.3 SCALE: 1:25



1 EXHAUST FAN EF-12 DETAIL
 M2.3/M2.3 SCALE: 1:20



4 EXHAUST FAN EF-15 DETAIL
 M2.3/M2.3 SCALE: 1:20



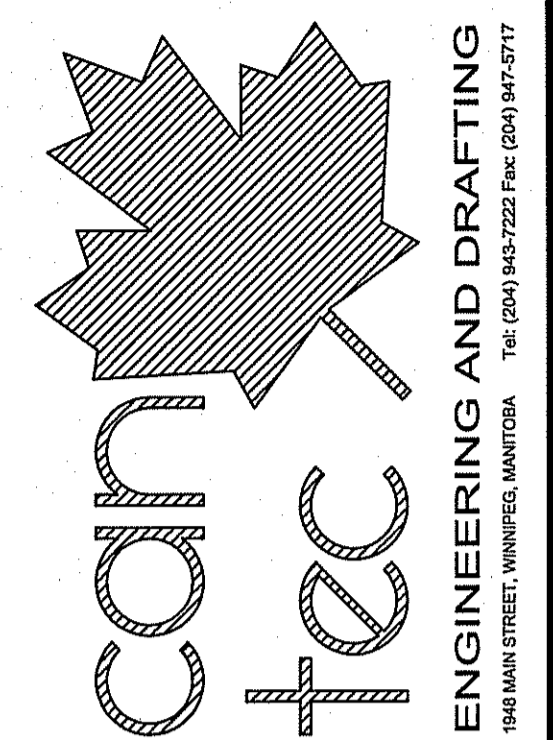
5 HVAC THROUGH EXHIBIT WALL OPENING TYPICAL
 M2.3/M2.3 SCALE: NTS

DRAWING NOTES FOR DETAIL 2 AND 3 #

1. CIRCULATION PUMP SEE SCHEMATIC FOR DETAILS
2. STRAINER
3. VALVE
4. POT FEEDER
5. SIGHT GLASS
6. IN-FLOOR HEATING HEADERS AND ZONE PUMPS
7. AIR PURGER
8. FROM HRV-2
9. FROM HRV-1
10. SUPPLY TO ROOMS 120, 117, AND 103
11. SUPPLY AIR DUCT
12. RETURN DUCT
13. FAN COIL FC-1 AND FC-2
14. 100MM HOUSE KEEPING PAD
15. STAIR RAIL TO CRAWL SPACE
16. HRV
17. STALE AIR FROM BUILDING TO HRV-2
18. FRESH AIR TO FC-2 INCLUDES 15 KW DUCT HEATER
19. DUCT HEATER - ON FRESH AIR DUCTS TO HRV-2 AND 2
20. CONDENSATE LINES TO FUNNEL FLOOR DRAIN
21. FRESH AIR TO FC-1
22. EXHAUST AIR FROM OFFICE AREA
23. SUPPLY AIR DUCTS TO COMMON LOUVRE CW DRIP PAN AND DRAIN
24. EXHAUST AIR DUCTS TO COMMON LOUVRE CW DRIP PAN AND DRAIN
25. DOW LINE FROM CRAWL SPACE
26. DHW LINE TO CRAWL SPACE
27. RECIRC. LINE FROM CRAWL SPACE
28. HOT WATER TANK
29. EXPANSION TANK FOR HOT WATER SYSTEM
30. FUNNEL FLOOR DRAIN
31. HOT AND COLD HOSE BIBS SURFACE MOUNTED
32. EXPANSION TANK FOR IN-FLOOR SYSTEM
33. GLYCOL FILL SYSTEM
34. FEED LINE TO GLYCOL FILL SYSTEM
35. WATER METER

GRILLE/DIFFUSER SCHEDULE			
SYMBOL	MANUFACTURER	MODEL	REMARKS
A	EH PRICE	SQUARE CONE DIFFUSER SCDA/3P/3C/B12	PANEL MOUNT 300X300 UNITS IN 600X600 PANEL
B	EH PRICE	PERFORATED DIFFUSERS RETURN PDDR/3/B12	
D	CHUBB OR SIMPSON	CHUBB: OP-20V SIMPSON: V-2	
E	CHUBB OR SIMPSON	CHUBB: OP-20V SIMPSON: V-2	
F	EH PRICE	EGG CRATE RETURN 80/TB/B12	
G	EH PRICE	TRANSFER GRILLS ATGH/BF/B12	
H	EH PRICE	EXTRUDED ALUMINUM LOUVRE JE443	
J	EH PRICE	LOUVERED RETURN 510ZD/F/L/A/B12	

THIS DRAWING MUST NOT BE SCALED.
 THE GENERAL CONTRACTOR SHALL VERIFY ALL DIMENSIONS, DATUMS AND LEVELS PRIOR TO COMMENCEMENT OF WORK AND IS HELD RESPONSIBLE FOR REPORTING ANY DISCREPANCY OR OMISSION TO CAN-TEC SERVICES LTD. IMMEDIATELY.
 THIS DRAWING IS THE EXCLUSIVE PROPERTY OF CAN-TEC SERVICES LTD. AND CAN BE REPRODUCED ONLY WITH THE PERMISSION OF CAN-TEC SERVICES LTD. IN WHICH CASE THE REPRODUCTION MUST BEAR THEIR NAME AS THE ENGINEERING/DRAFTING FIRM.
 http://www.can-tec.com



REV.	DATE (YY/MM/DD)	BY	REVISION
01	14/07/15	RS	ISSUED FOR ADDENDUM NO 3
02	14/08/15	JLS	ISSUED FOR TENDER
03	14/09/15	JLS	ISSUED FOR 50% REVIEW
04	14/10/15	JLS	ISSUED FOR 90% REVIEW
05	14/12/15	JLS	ISSUED FOR 55% REVIEW

SEAL BY: _____
 PROJECT TITLE: FACILITY BUILDING
 SHEET TITLE: MAIN FLOOR - HYDRONICS
 DATE (YY/MM/DD): 14/02/14
 SCALE: AS NOTED
 DRAWN BY: RS
 CHECKED BY: JLS
 LOCATION: ISLAND LAKE, MANITOBA

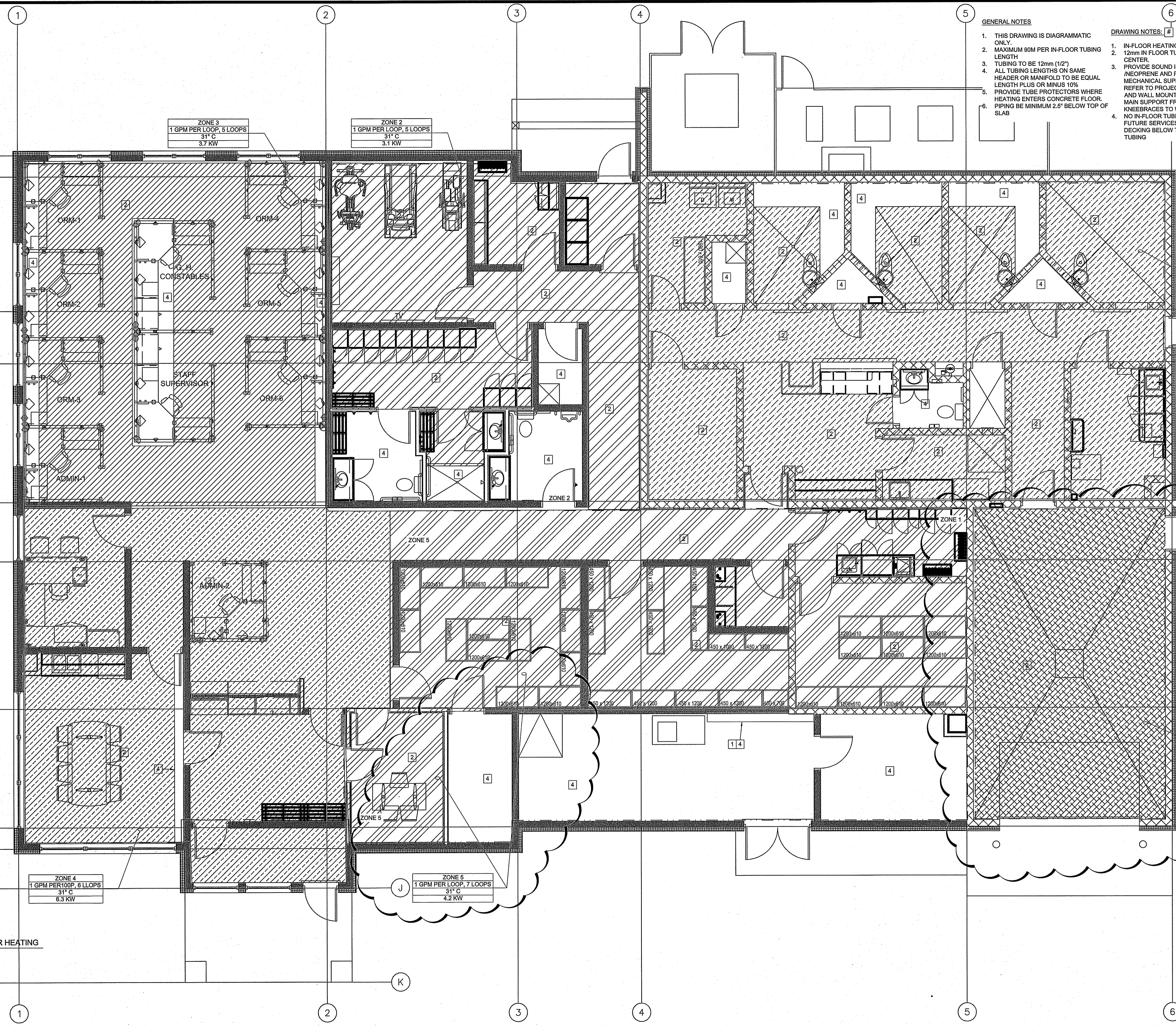
TENDER
M3.0
 REVISION #: 01
 JOB NO.: 13-168-01-47

GENERAL NOTES

1. THIS DRAWING IS DIAGRAMMATIC ONLY.
2. MAXIMUM 90M PER IN-FLOOR TUBING LENGTH
3. TUBING TO BE 12mm (1/2")
4. ALL TUBING LENGTHS ON SAME HEADER OR MANIFOLD TO BE EQUAL LENGTH PLUS OR MINUS 10%
5. PROVIDE TUBE PROTECTORS WHERE HEATING ENTERS CONCRETE FLOOR.
6. PIPING BE MINIMUM 2.5" BELOW TOP OF SLAB

DRAWING NOTES: #

1. IN-FLOOR HEATING MANIFOLDS
2. 12mm IN FLOOR TUBING PLACED AT 300mm ON CENTER.
3. PROVIDE SOUND ISOLATION RUBBER /NEOPRENE AND PADS TO SEPARATE ALL MECHANICAL SUPPORTS FROM STRUCTURE. REFER TO PROJECT SPECIFICATIONS, PUMPS AND WALL MOUNTED EQUIPMENT SHALL HAVE MAIN SUPPORT FRAME TO FLOOR, KNEEBRACES TO WALL.
4. NO IN-FLOOR TUBING IN THIS AREA FOR FUTURE SERVICES. MARK AREAS ON STEEL DECKING BELOW THAT ARE CLEAR OF IN-FLOOR TUBING



ZONE 3
 1 GPM PER LOOP, 5 LOOPS
 31° C
 3.7 KW

ZONE 2
 1 GPM PER LOOP, 5 LOOPS
 31° C
 3.1 KW

ZONE 1
 1 GPM PER LOOP, 7 LOOPS
 31° C
 4.9 KW

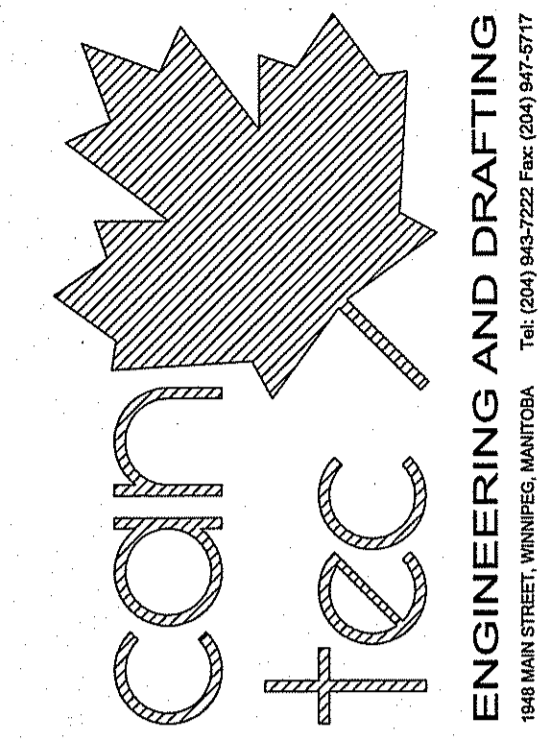
ZONE 4
 1 GPM PER LOOP, 6 LLOPS
 31° C
 6.3 KW

ZONE 5
 1 GPM PER LOOP, 7 LOOPS
 31° C
 4.2 KW

ZONE 6
 1 GPM PER LOOP, 3 LOOPS
 31° C
 2.7 KW

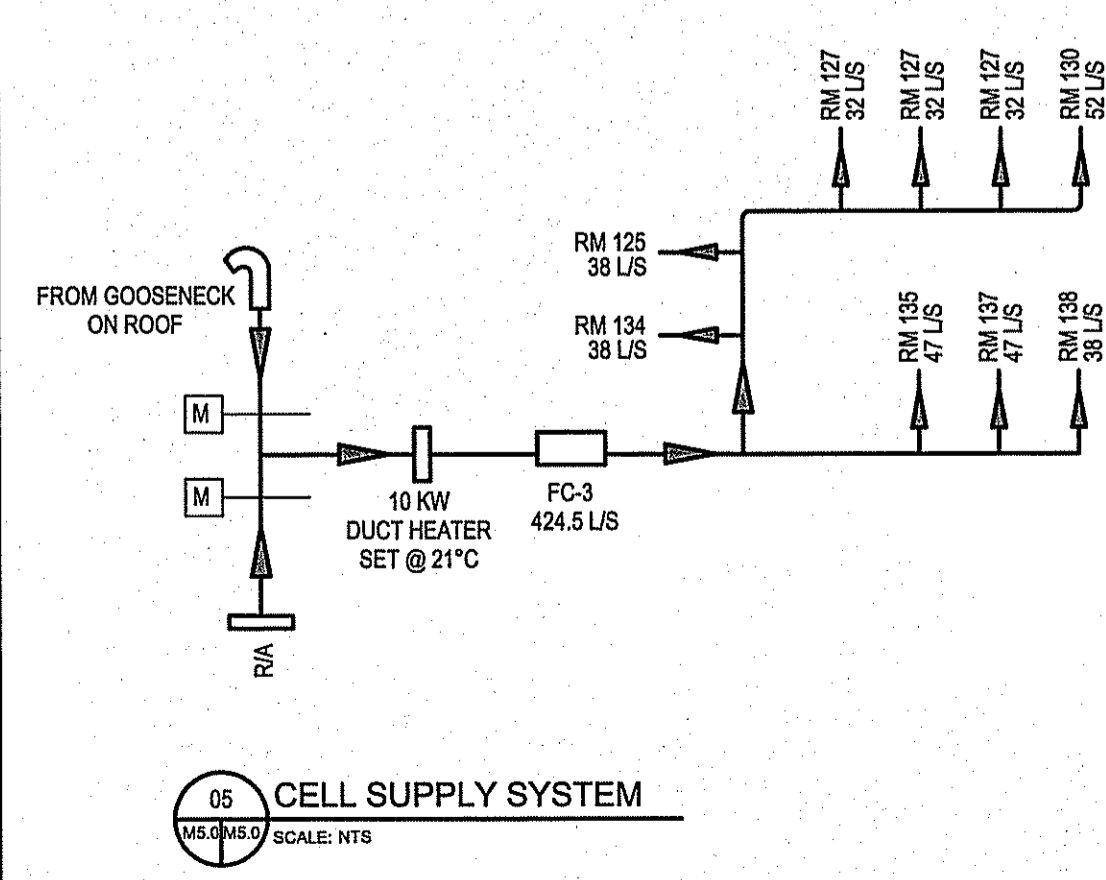
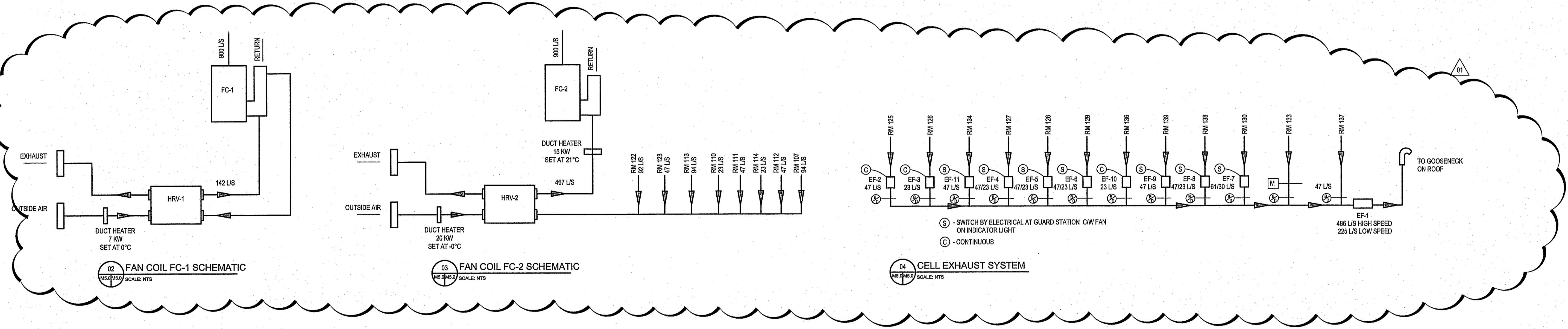
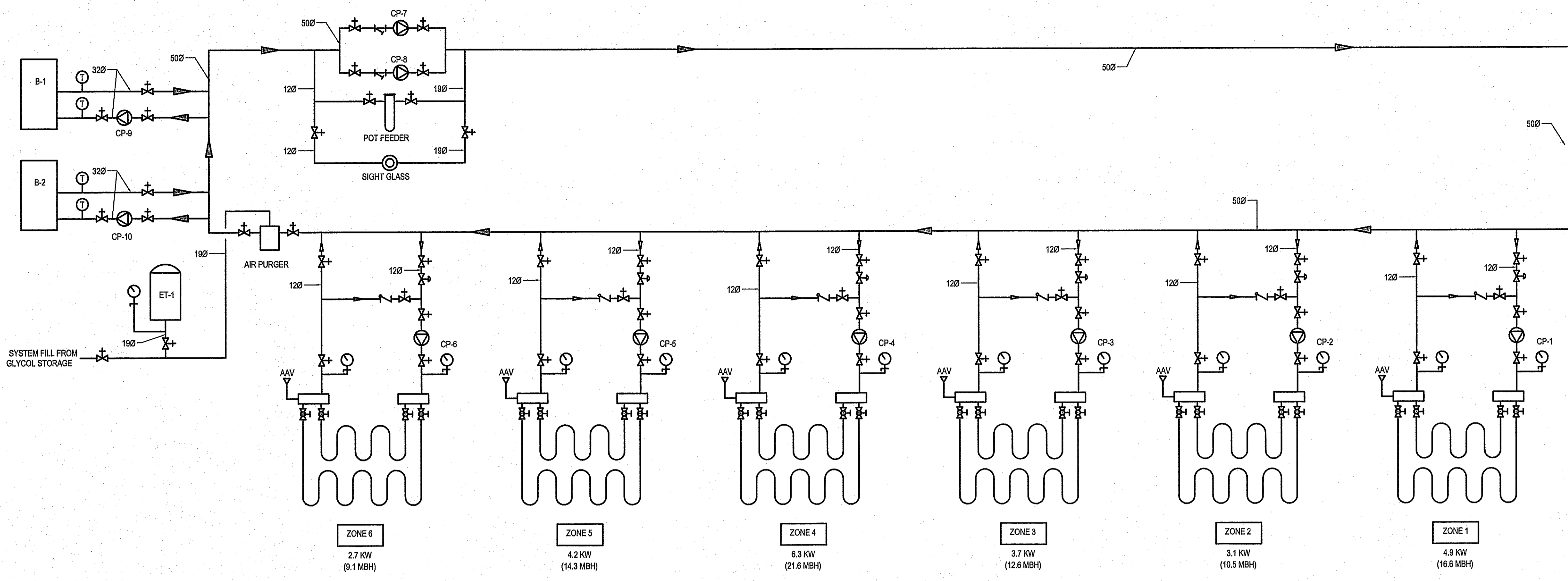
1 MAIN FLOOR PLAN - IN FLOOR HEATING
 (M3.0) SCALE: 1:50

THIS DRAWING MUST NOT BE SCALED.
 THE GENERAL CONTRACTOR SHALL VERIFY ALL DIMENSIONS, DATINGS AND LEVELS PRIOR TO COMMENCEMENT OF WORK AND IS HELD RESPONSIBLE FOR REPORTING ANY DISCREPANCY OR OMISSION TO CAN-TEC SERVICES LTD. IMMEDIATELY.
 THIS DRAWING IS THE EXCLUSIVE PROPERTY OF CAN-TEC SERVICES LTD. AND CAN BE REPRODUCED ONLY WITH THE PERMISSION OF CAN-TEC SERVICES LTD. IN WHICH CASE THE REPRODUCTION MUST BEAR THEIR NAME AS THE ENGINEERING DRAFTING FIRM.
 http://www.can-tec-services.com



REV.	DATE	BY	REVISION
01	14.07.14	RS	ISSUED FOR APPROVAL
02	14.08.08	RS	FOR COMMENTS
03	14.08.08	RS	ISSUED FOR 90% REVIEW
04	14.08.08	RS	ISSUED FOR 95% REVIEW
05	14.08.21	RS	ISSUED FOR 98% REVIEW
06	14.08.21	RS	ISSUED FOR 99% REVIEW
07	14.08.21	RS	ISSUED FOR 100% REVIEW

SEALED BY:



PROJECT TITLE: FACILITY BUILDING
 SUBJECT TITLE: SYSTEM SCHEMATICS
 DATE (Y/M/D): 13.12.07
 SCALE: AS NOTED
 LOCATION: ISLAND LAKE, MANITOBA
 CHECKED BY: NC
 DRAWN BY: RS

TEZDOR
M5.0
 REVISION #: 01
 JOB NO.: 13-168-01-47