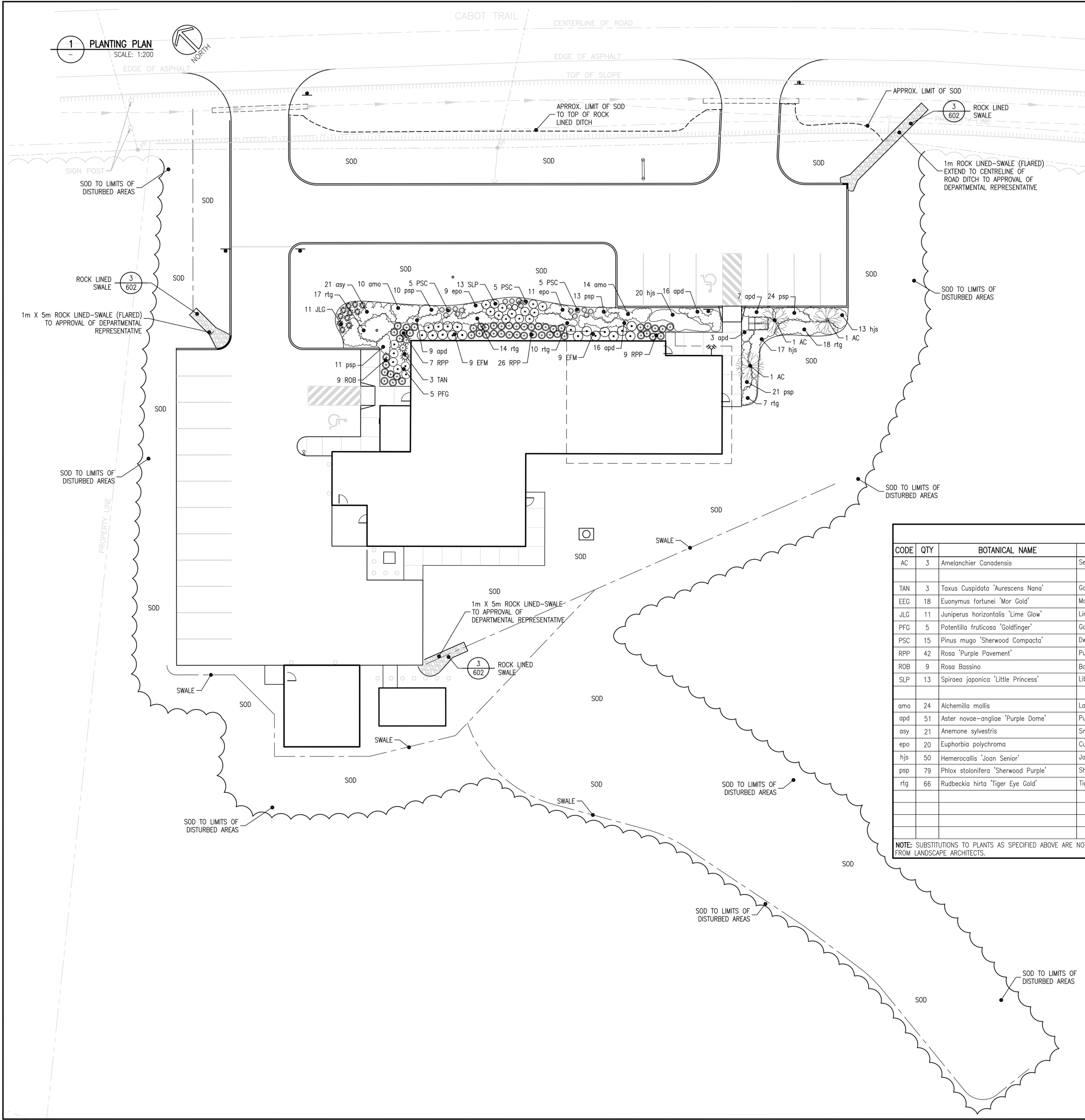


**1 PLANTING PLAN**  
SCALE: 1:200

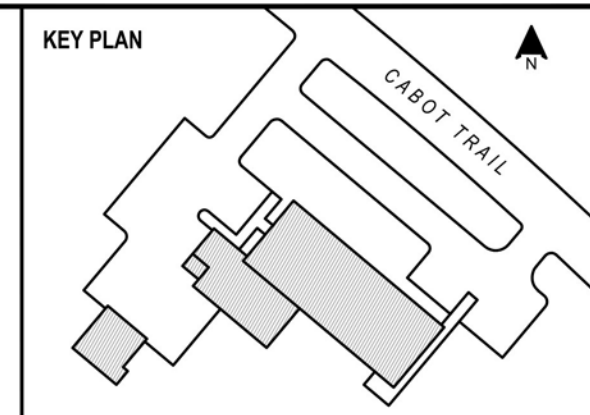


**GENERAL NOTES**  
THESE NOTES ARE APPLICABLE TO ALL LANDSCAPE DRAWINGS

1. THIS IS NOT AN OFFICIAL SURVEY DRAWING. SURVEY INFORMATION SHOWN ON THIS PLAN IS EXTRACTED FROM VARIOUS PROPERTY AND TOPOGRAPHICAL SURVEYS WHICH ARE TO BE READ TOGETHER WITH THESE DRAWINGS FOR CONFIRMATION.
2. ALL CONSTRUCTION PROCEDURES ARE TO COMPLY WITH LATEST EDITION OF APPLICABLE FEDERAL, PROVINCIAL AND LOCAL REGULATIONS AND PROJECT SPECIFICATIONS.
3. OBTAIN APPROVAL OF CONSULTANT BEFORE REMOVING ANY SITE VEGETATION.
4. PROTECT ALL VEGETATION AS NOTED AND AS DIRECTED BY CONSULTANT TO REMAIN.
5. DO NOT SCALE THIS DRAWING.
6. ALL MEASURES ON THIS DRAWING ARE IN METRIC UNITS UNLESS NOTED OTHERWISE.
7. DRAWINGS TO BE READ IN COORDINATION WITH SPECIFICATIONS.
8. WHERE CONDITIONS ENCOUNTERED DURING CONSTRUCTION OR EXCAVATION VARY FROM THOSE SHOWN, NOTIFY CONSULTANT IMMEDIATELY.
9. CONFIRM AS-BUILT CONDITIONS AND EXISTING GRADE ELEVATIONS BY DIRECT MEASUREMENT OR CONTROL SURVEY PRIOR TO CONSTRUCTING WORK. REPORT DISCREPANCIES TO CONSULTANT IMMEDIATELY.

PLANTING SCHEDULE								
CODE	QTY	BOTANICAL NAME	COMMON NAME	SIZE	CONDITION	SPACING	STAKING	REMARKS
AC	3	Amelanchier Canadensis	Serviceberry	50mm	WB	As Shown	Stake	Mid Branch Ht. 1800
TAN	3	Taxus Cuspidata 'Aurea Nana'	Golden Dwarf Japanese Yew	CG#3		100cm o.c.		
EEG	18	Euonymus fortunei 'Mor Gold'	Mor Gold Euonymus	CG#5		100cm o.c.		
JLG	11	Juniperus horizontalis 'Lime Glow'	Lime Glow Juniper	CG#3		75cm o.c.		
PFG	5	Potentilla fruticosa 'Goldfinger'	Goldfinger Potentilla	CG#3		90cm o.c.		
PSC	15	Pinus mugo 'Sherwood Compacta'	Dwarf Sherwood Mugo Pine	CG#3		60cm o.c.		
RPP	42	Rosa 'Purple Pavement'	Purple Pavement Rose	CG#3		75cm o.c.		
ROB	9	Rosa Bossino	Bossino Rose	CG32		75cm o.c.		
SLP	13	Spiraea japonica 'Little Princess'	Little Princess Spirea	CG#2		90cm o.c.		
amo	24	Alchemilla mollis	Lady's Mantle	CG#1		60cm o.c.		
apd	51	Aster novae-angliae 'Purple Dome'	Purple Dome New England Aster	CG#1		60cm o.c.		
asy	21	Anemone sylvestris	Snowdrop Anemone	CG#1		50cm o.c.		
epo	20	Euphorbia polychroma	Cushion Spurge	CG#1		45cm o.c.		
hjs	50	Hemerocallis 'Joan Senior'	Joan Senior Daylily	CG#1		60cm o.c.		
psp	79	Phlox stolonifera 'Sherwood Purple'	Sherwood Purple Creeping Phlox	CG#1		40cm o.c.		
rtg	66	Rudbeckia hirta 'Tiger Eye Gold'	Tiger Eye Gold Gloriosa Daisy	CG#2		60cm o.c.		

NOTE: SUBSTITUTIONS TO PLANTS AS SPECIFIED ABOVE ARE NOT ACCEPTABLE UNLESS WRITTEN PERMISSION HAS BEEN OBTAINED FOR SPECIES / VARIETY, SIZE, QUANTITY &/OR CONDITION FROM LANDSCAPE ARCHITECTS.



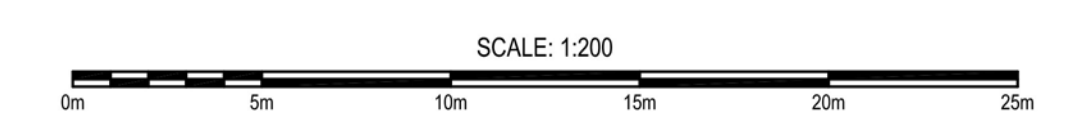
**Vollick McKee Petersmann**  
ASSOCIATED LIMITED  
LANDSCAPE ARCHITECTURE  
SITE PLANNING PROJECT MANAGEMENT  
2030 Goolagong Street  
Suite 200  
Halifax, Nova Scotia  
Canada B3K 3A9  
Tel: 902 422 6514  
Fax: 902 425 9822  
info@vollickmckee.com  
www.vollickmckee.com

1	ISSUED FOR TENDER	18 JULY 2014
NO.	REVISION	DATE

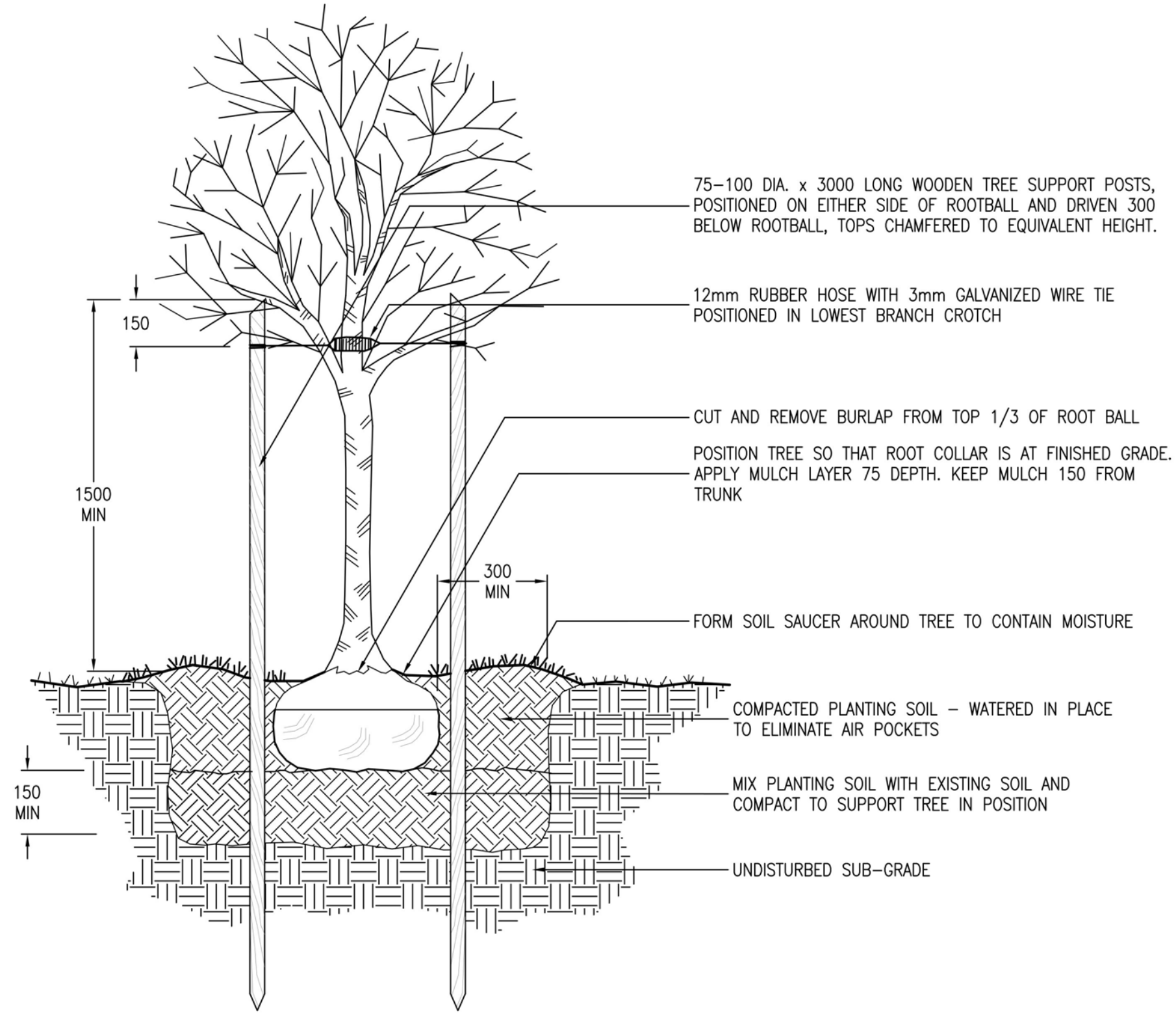
STAMP

**INGONISH CIVIC BUILDING**  
Municipality of Victoria County  
Ingonish, Nova Scotia  
DSRA JOB #: 12169  
DRAWN BY: KS/SDP  
CHECKED BY: JMK  
SCALE: AS INDICATED

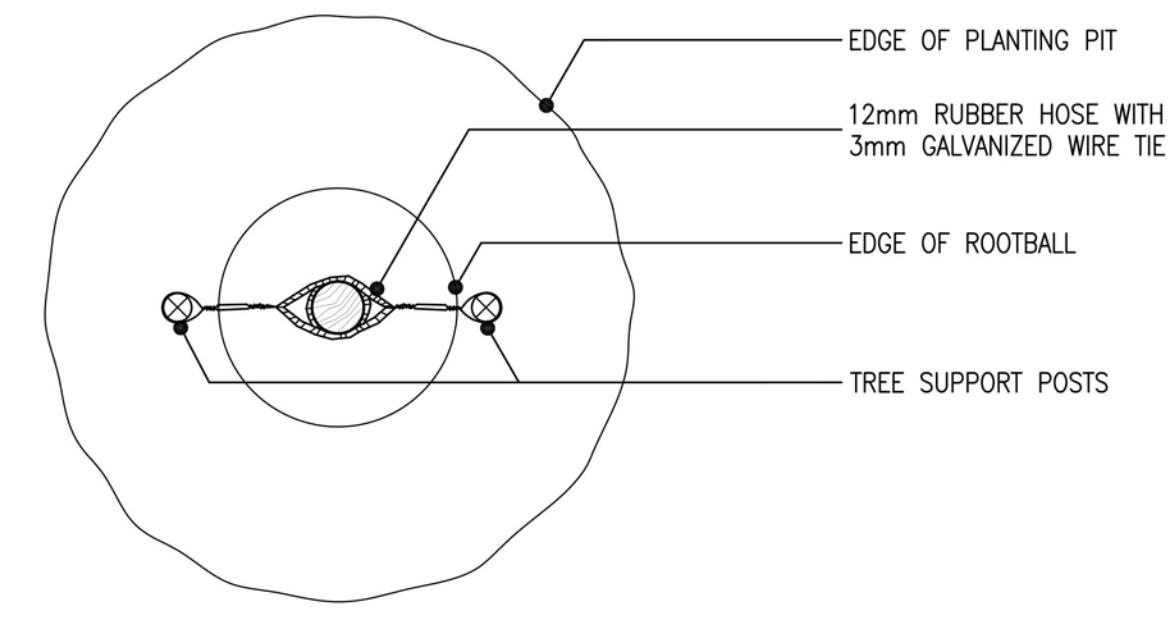
PLANTING PLAN  
**601**



**SECTION: 1**  
**DECIDUOUS TREE PLANTING DETAIL**  
 SCALE: NTS

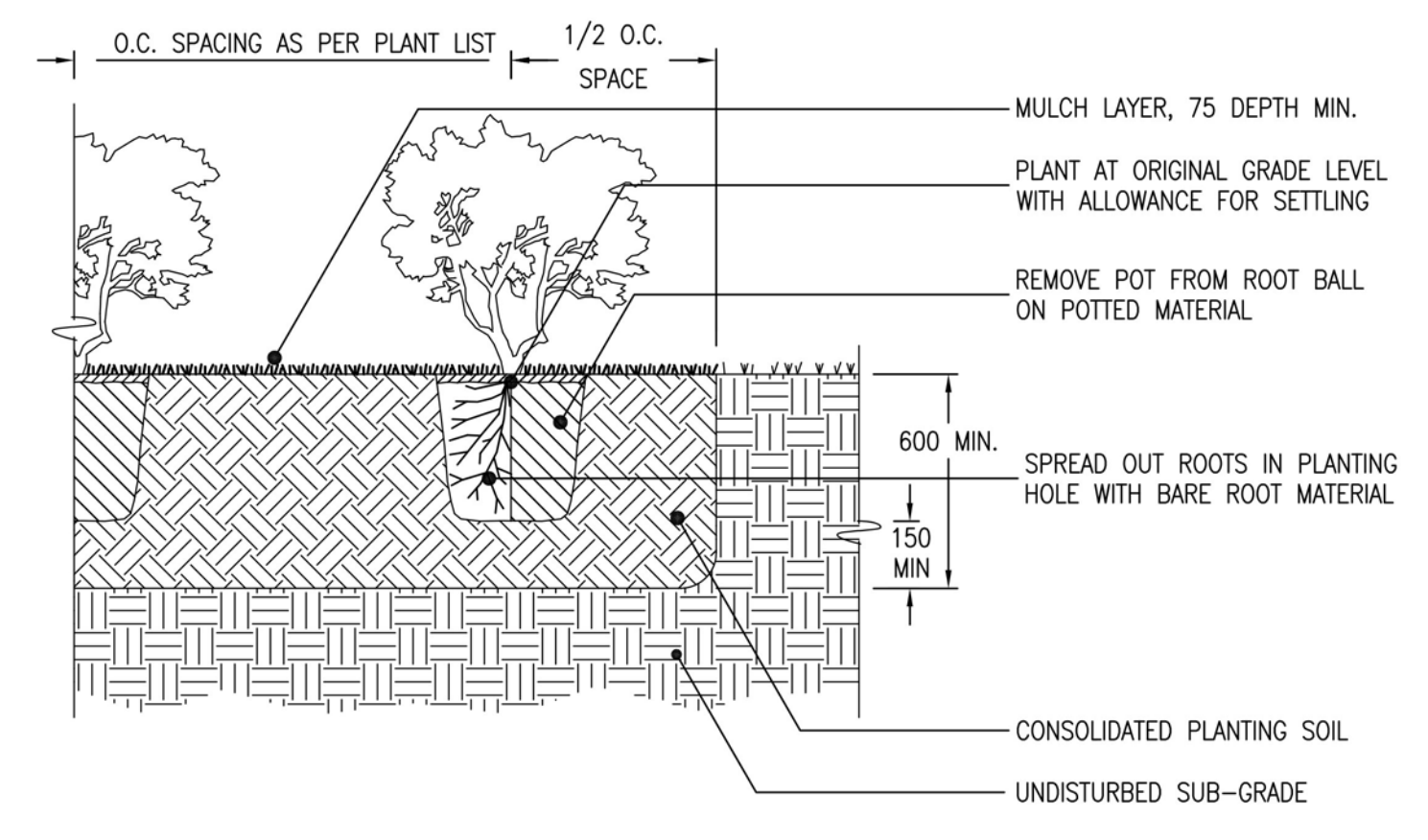


- 75-100 DIA. x 3000 LONG WOODEN TREE SUPPORT POSTS, POSITIONED ON EITHER SIDE OF ROOTBALL AND DRIVEN 300 BELOW ROOTBALL, TOPS CHAMFERED TO EQUIVALENT HEIGHT.
- 12mm RUBBER HOSE WITH 3mm GALVANIZED WIRE TIE POSITIONED IN LOWEST BRANCH CROTCH
- CUT AND REMOVE BURLAP FROM TOP 1/3 OF ROOT BALL POSITION TREE SO THAT ROOT COLLAR IS AT FINISHED GRADE. APPLY MULCH LAYER 75 DEPTH. KEEP MULCH 150 FROM TRUNK
- 300 MIN
- FORM SOIL SAUCER AROUND TREE TO CONTAIN MOISTURE
- 1500 MIN
- 150
- COMPACTED PLANTING SOIL - WATERED IN PLACE TO ELIMINATE AIR POCKETS
- MIX PLANTING SOIL WITH EXISTING SOIL AND COMPACT TO SUPPORT TREE IN POSITION
- UNDISTURBED SUB-GRADE



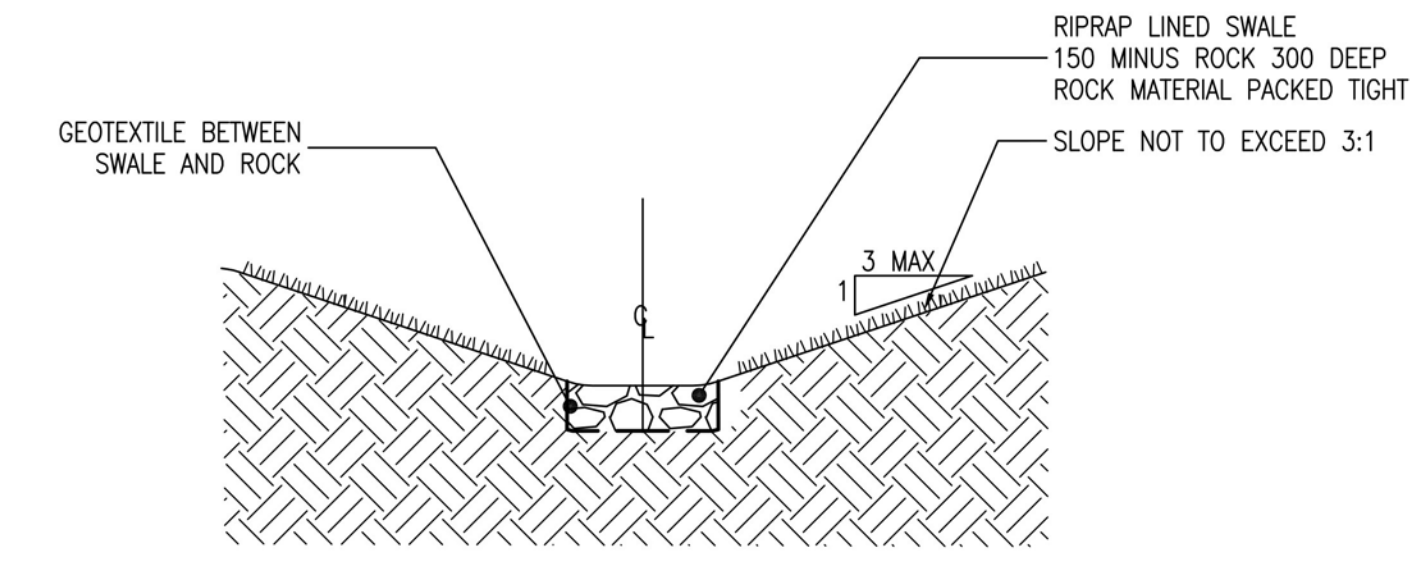
NOTE:  
 DETAIL TO BE READ IN CONJUNCTION WITH PLANTING SPECIFICATIONS

**SECTION: 2**  
**SHRUB PLANTING DETAIL**  
 SCALE: NTS

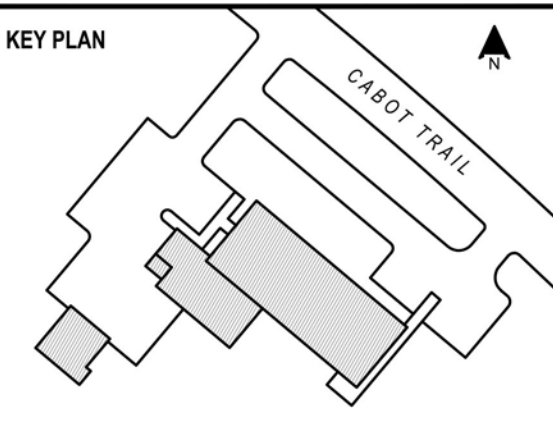


- MULCH LAYER, 75 DEPTH MIN.
- PLANT AT ORIGINAL GRADE LEVEL WITH ALLOWANCE FOR SETTLING
- REMOVE POT FROM ROOT BALL ON POTTED MATERIAL
- 600 MIN.
- 150 MIN
- SPREAD OUT ROOTS IN PLANTING HOLE WITH BARE ROOT MATERIAL
- UNDISTURBED SUB-GRADE
- CONSOLIDATED PLANTING SOIL

**SECTION: 3**  
**ROCK LINED SWALE**  
 SCALE: NTS



Filter Fabric: Non-woven geotextile fabric composed of polypropylene fibres inert to biological degradation and resistant to naturally encountered chemicals, alkalis, and acids and conform to minimum physical properties listed below:  
 1. Weight (ASTM D3776): 136g/m<sup>2</sup>  
 2. Grab Tensile (ASTM D4632): 400N minimum.  
 3. Grab Elongation (ASTM D4632): 45-100%  
 4. Puncture Resistance (ASTM D4833): 200N minimum.  
 5. Mullen Burst (ASTM D3786): 1350 kPa minimum.  
 6. UV Resistance (ASTM D4355): 70% strength retained.



**Vollick McKee Petersmann**  
 ASSOCIATED LIMITED  
 LANDSCAPE ARCHITECTURE  
 SITE PLANNING PROJECT MANAGEMENT  
 2030 Guelph Street Suite 200 Halifax, Nova Scotia Canada B3K 3A9  
 Tel: 902 422 6514 Fax: 902 422 6822 info@vollickmckee.com www.vollickmckee.com

NO.	REVISION	DATE
1	ISSUED FOR TENDER	18 JULY 2014

STAMP  
  
 14-JUL-10  
 JAMES W. D. MCKEE

**INGONISH CIVIC BUILDING**  
 Municipality of Victoria County  
 Ingonish, Nova Scotia  
 DSRA JOB #: 12169  
 DRAWN BY: KS/SDP  
 CHECKED BY: JMK  
 SCALE: AS INDICATED