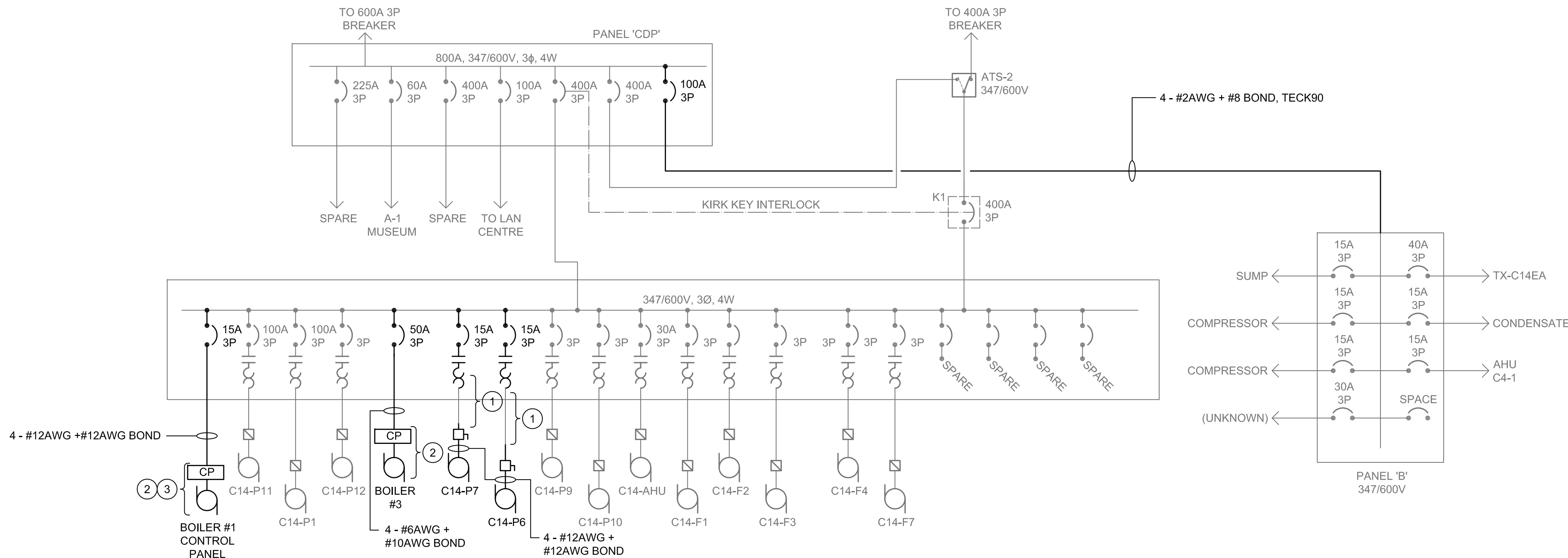


**1 PARTIAL SINGLE LINE DIAGRAM - DEMOLITION**  
E100 SCALE: N.T.S.



**2 PARTIAL SINGLE LINE DIAGRAM - NEW EQUIPMENT**  
E100 SCALE: N.T.S.

**LEGEND**

- EXISTING EQUIPMENT TO BE REMOVED
- EXISTING EQUIPMENT TO REMAIN
- NEW EQUIPMENT

**GENERAL NOTES**

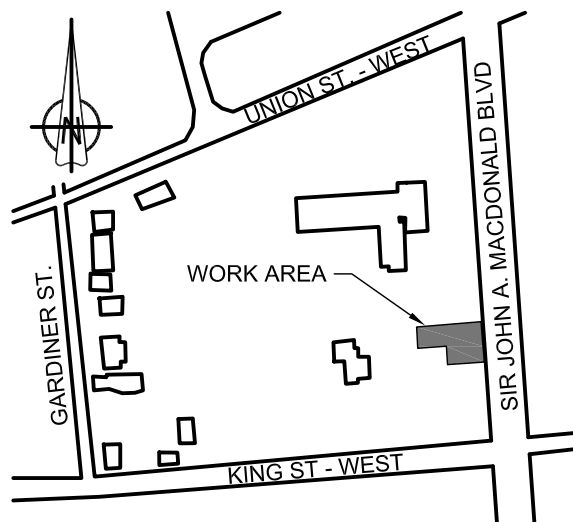
- EXISTING ELECTRICAL SITE SERVICES AND EQUIPMENT INDICATED IS FOR INFORMATION ONLY. CONTRACTOR TO VERIFY EXISTING SITE CONDITIONS AND EXACT LOCATIONS OF EQUIPMENT PRIOR TO CONSTRUCTION.
- CONTRACTOR SHALL COORDINATE ALL CONSTRUCTION PHASING AND LOCATIONS OF NEW MECHANICAL EQUIPMENT WITH MECHANICAL TRADE PRIOR TO CONSTRUCTION.
- DEMOLITION OF ELECTRICAL EQUIPMENT IS NOT LIMITED TO THE ELECTRICAL EQUIPMENT INDICATED ON THE SINGLE LINE DIAGRAM. DEMOLITION SHALL INCLUDE, BUT NOT LIMITED TO ALL ASSOCIATED CONDUIT, CONDUCTOR, SUPPORTS AND AUXILIARY SYSTEMS UNLESS OTHERWISE INDICATED ON DRAWINGS.
- THIS DRAWING REPRESENTS PARTIAL ELECTRICAL SYSTEMS THAT PERTAIN TO CONSTRUCTION SCOPE OF WORK. THIS DRAWING SHALL BE READ IN CONJUNCTION WITH EXISTING SINGLE LINE DIAGRAMS, ELECTRICAL LAYOUT DRAWINGS AND SPECIFICATIONS.

**DRAWING NOTES**

- CONTRACTOR SHALL REUSE EXISTING CONDUCTOR AND CONDUIT FROM EXISTING MCC-C14E TO PUMP LOCATIONS IN BASEMENT AREA.
- CONTROL PANELS AND PUMPS PROVIDED BY OTHERS. ELECTRICAL FEED TO BE PROVIDED FROM EXISTING MCC-C14E TO LOCATION OF CONTROL PANELS AS INDICATED ON ELECTRICAL LAYOUT DRAWINGS.
- ELECTRICAL CONTRACTOR SHALL COORDINATE ON SITE WITH MECHANICAL TRADE FOR DEMOLITION AND NEW CONSTRUCTION PHASING OF BOILER #1 POWER AND CONTROLS. CONTRACTOR SHALL ENSURE MINIMAL DOWNTIME OF BOILER #1. COORDINATE WITH DEPARTMENTAL REPRESENTATIVE AS REQUIRED.

Public Works and  
Government Services Canada  
Architectural and Engineering Services  
Ontario Region  
  
Travaux publics et  
Services gouvernementaux Canada  
Services d'architecture et de génie  
Région de l'Ontario

Key plan  
Plan clé



00	ISSUED FOR TENDER	2014/07/24
0A	ISSUED FOR 99% REVIEW	2014/05/22
revision	description	date

Do not scale drawings.  
Verify all dimensions and conditions on site and  
immediately notify the engineer of all discrepancies.

<b>A</b>	Detail No.
<b>B</b>	No. du detail
<b>C</b>	drawing no. - where detail required dessin no. - où détail exigé
<b>C</b>	drawing no. - where detailed dessin no. - où détaillé

project title  
titre du projet  
**OTTAWA** ONTARIO  
CLIENT  
560 KING STREET,  
KINGSTON, K7L 4V7  
**KINGSTON PENITENTIARY  
HEATING PLANT UPGRADE**

drawing title  
titre du dessin  
**SINGLE LINE DIAGRAM /  
DEMOLITION AND NEW EQUIPMENT**

drawn by  
dessiné par  
**PATRICK BOURGEOIS**

designed by  
conçu par  
**JASON GAUTHIER**

approved by  
approuvé par  
**CHERYL WHITE**

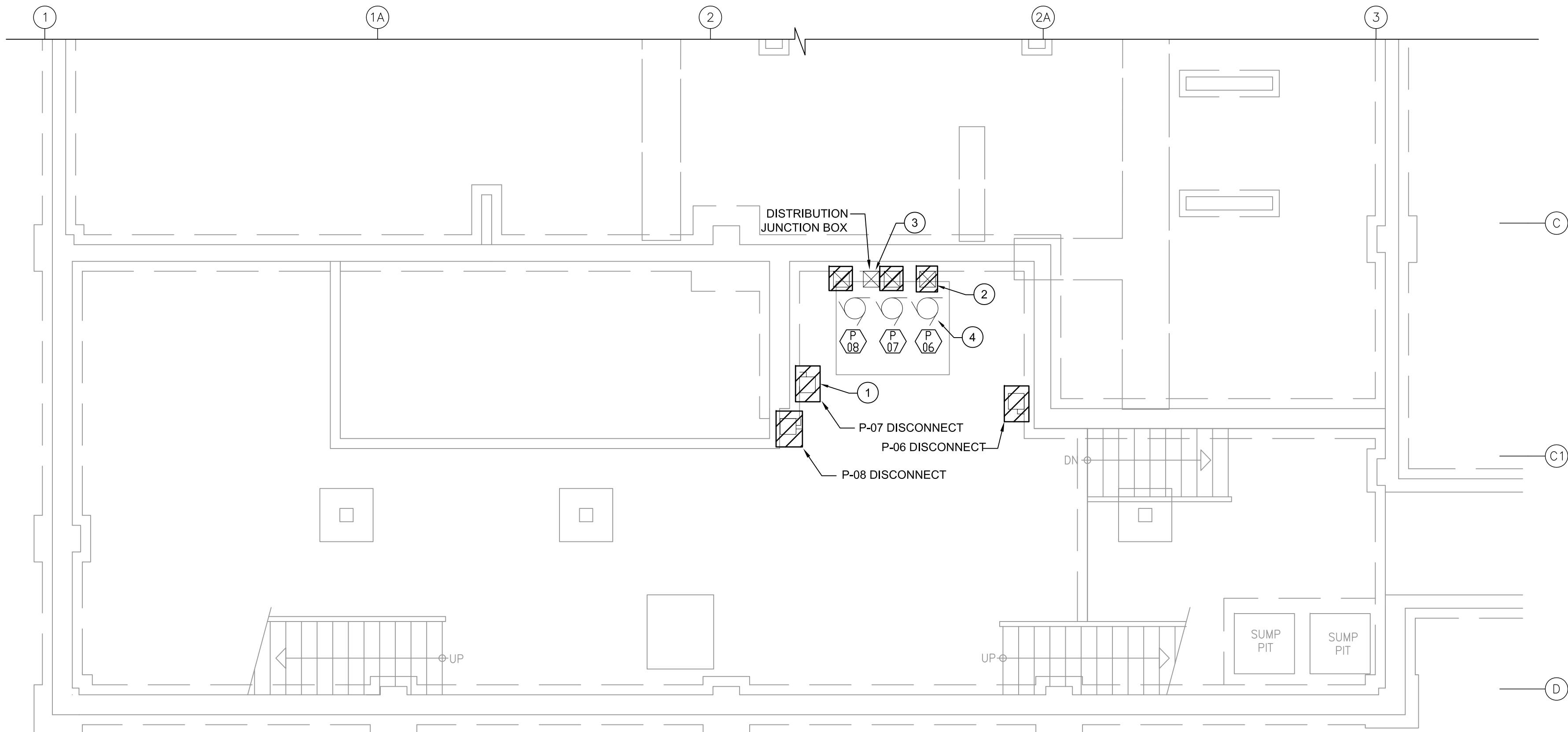
tender  
soumission  
**DUNCAN PARKER, P.ENG.**

project manager  
administrateur  
de projets

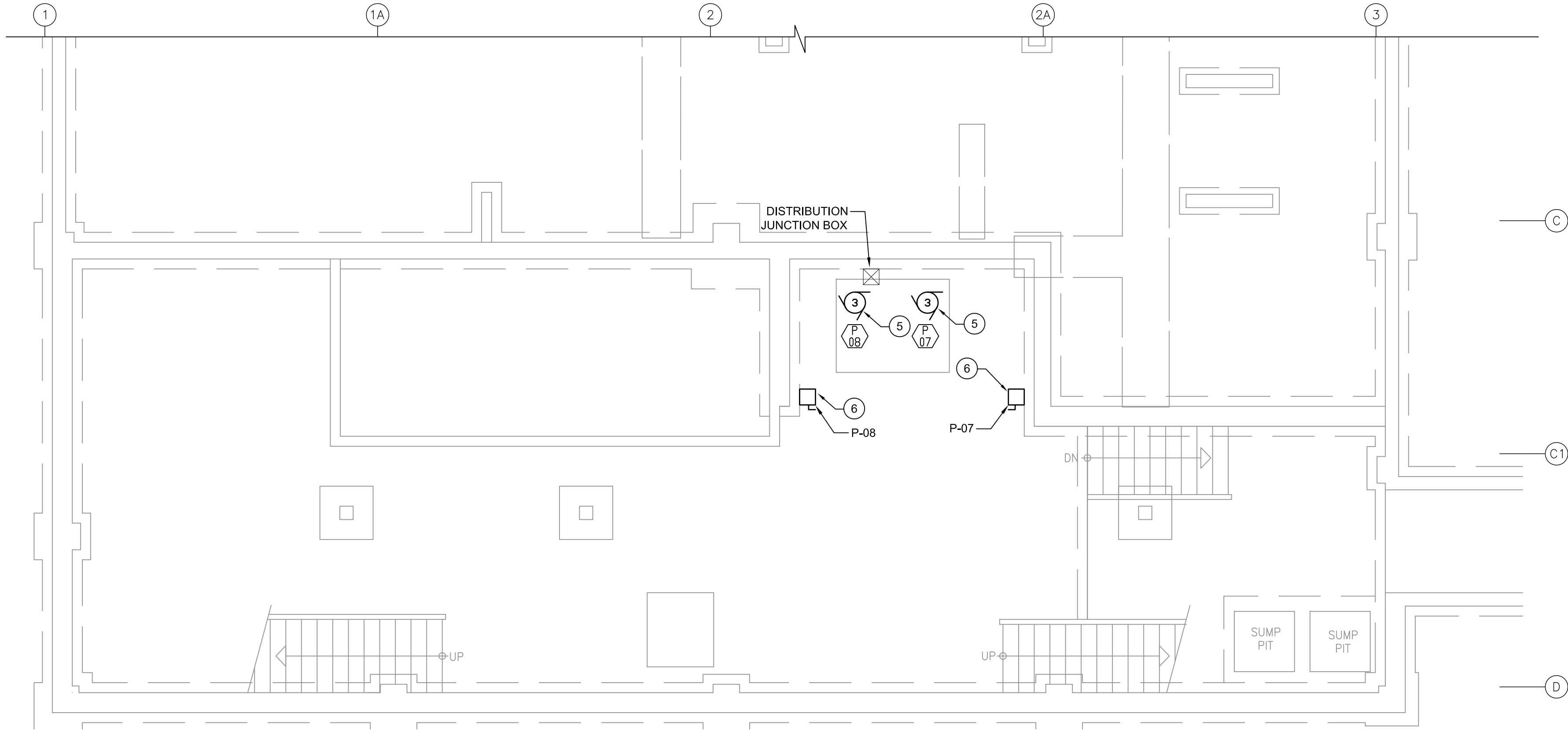
project date  
date du projet  
**2014/04/07**

project no.  
no. du projet  
**R.068125.001**

drawing no.  
dessin no.  
**E100**



1 BASEMENT ELECTRICAL EQUIPMENT LAYOUT - DEMOLITION  
E200 SCALE: 1:50



2 BASEMENT ELECTRICAL EQUIPMENT LAYOUT - NEW  
E200 SCALE: 1:50

LEGEND

- EXISTING EQUIPMENT TO BE REMOVED
- EXISTING EQUIPMENT TO REMAIN
- NEW EQUIPMENT

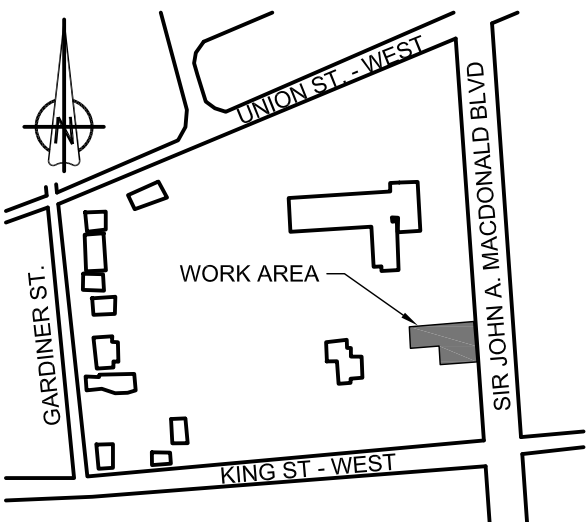
GENERAL NOTES

- EXISTING ELECTRICAL SITE SERVICES AND EQUIPMENT INDICATED IS FOR INFORMATION ONLY. CONTRACTOR TO VERIFY EXISTING SITE CONDITIONS AND EXACT LOCATIONS OF EQUIPMENT PRIOR TO CONSTRUCTION.
- CONTRACTOR SHALL COORDINATE ALL CONSTRUCTION PHASING AND LOCATIONS OF NEW MECHANICAL EQUIPMENT WITH MECHANICAL TRADE PRIOR TO CONSTRUCTION.
- ARCHITECTURAL BACKGROUNDS IN ELECTRICAL DRAWINGS ARE REPRESENTATIVE ONLY. ALTHOUGH EVERY EFFORT HAS BEEN MADE TO ENSURE THE ACCURACY OF THESE BACKGROUNDS, ACTUAL SITE CONDITIONS AND LATEST ARCHITECTURAL DOCUMENTS MAY VARY FROM ELECTRICAL DRAWINGS. CONTRACTOR SHALL VERIFY EXACT ARCHITECTURAL LAYOUT ON SITE PRIOR TO CONSTRUCTION.

DRAWING NOTES

- CONTRACTOR SHALL DISCONNECT AND REMOVE EXISTING DISCONNECT SWITCH FOR FEEDWATER PUMPS. CONDUCTOR AND CONDUIT TO BE PULLED BACK TO DISTRIBUTION JUNCTION BOX LOCATED BEHIND PUMPS AND REMOVED. TERMINATE AND CAP CONDUCTOR AT DISTRIBUTION JUNCTION BOX FOR USE WITH NEW PUMPS P06 AND P07. PUMPS FED FROM MCC-C14E LOCATED ON GROUND FLOOR. ELECTRICAL CONTRACTOR TO COORDINATE CONSTRUCTION PHASING WITH MECHANICAL TRADE. TYPICAL FOR PUMPS P-06, P-07 AND P-08 DISCONNECT SWITCHES.
- CONTRACTOR SHALL DISCONNECT AND REMOVE EXISTING JUNCTION BOXES ASSOCIATED WITH FEEDWATER PUMPS P-06, P-07 AND P-08 INCLUDING ALL ASSOCIATED CONDUCTOR AND CONDUIT TO EXISTING PUMPS. TYPICAL OF THREE (3) JUNCTION BOXES.
- DISTRIBUTION JUNCTION BOX, PAINTED WHITE, LOCATED BEHIND FEEDWATER PUMPS, TO BE MAINTAINED FOR FUTURE USE INCLUDING EXISTING CONDUIT FROM DISTRIBUTION BOX TO MCC-C14E LOCATED ON GROUND FLOOR. P-06 AND P-07 CONDUCTOR TO BE MAINTAINED FOR FUTURE USE. CONTRACTOR SHALL SAFELY ISOLATE CONDUCTORS AND IDENTIFY CONDUCTOR LOAD. P-08 CONDUCTOR SHALL BE COMPLETELY DISCONNECTED, PULLED BACK TO MCC-C14E AND REMOVED. ASSOCIATED P-8 STARTER AND BREAKER WITHIN MCC-C14E TO BE DISCONNECTED AND REMOVED.
- DISCONNECT AND REMOVE ELECTRICAL CONNECTIONS TO PUMP. ASSOCIATED CONDUCTOR AND CONDUIT TO BE PULLED BACK TO LOCAL JUNCTION BOX AND REMOVED. TYPICAL OF PUMPS P-06, P-07 AND P-08. REMOVAL OF PUMPS BY MECHANICAL TRADE.
- PROVIDE 3 - #12AWG + #12AWG BOND, RW90, 21mmC, FROM PUMP TO ASSOCIATED DISCONNECT SWITCH. CONTRACTOR SHALL COORDINATE WITH MECHANICAL TRADE FOR EXACT LOCATION OF PUMPS AND CONSTRUCTION PHASING. CONTRACTOR SHALL REPLACE EXISTING STARTER AND BREAKER AT MCC-C14E WITH NEW 15A, 3P, 600V BREAKER AND 600V, 3HP STARTER WITH RUN INDICATION LIGHT AND 'ON/OFF' SELECTOR SWITCH. TYPICAL OF P-07 AND P-08 PUMP CONNECTIONS.
- PROVIDE ONE (1) 30A, NON-FUSABLE, 600V, 3P DISCONNECT SWITCH IN A NEMA 1 ENCLOSURE AND 3 - #12AWG + #12 BOND, RW90 - 21mmC, FROM DISCONNECT SWITCH TO EXISTING MCC-C14E FEED LOCATED IN EXISTING DISTRIBUTION JUNCTION BOX. PROVIDE SPLICE KIT FOR CONDUCTOR WITHIN JUNCTION BOX. DISCONNECT SWITCH TO BE LABELLED WITH CORRESPONDING PUMP NAME ON LAMICOID TAG. TYPICAL FOR PUMPS P-07 AND P-08 DISCONNECT SWITCHES.

Key plan  
Plan clé



00	ISSUED FOR TENDER	2014/07/24
0A	ISSUED FOR 99% REVIEW	2014/05/22
revision	description	date

Do not scale drawings.  
Verify all dimensions and conditions on site and  
immediately notify the engineer of all discrepancies.

A	Detail No.
B	No. du détail
C	drawing no. - where detail required dessin no. - où détail exigé
	drawing no. - where detailed dessin no. - où détaillé

project title  
titre du projet  
**OTTAWA** ONTARIO  
CLIENT  
560 KING STREET,  
KINGSTON, K7L 4V7  
**KINGSTON PENITENTIARY  
HEATING PLANT UPGRADE**

drawing title  
titre du dessin  
**BASEMENT ELECTRICAL LAYOUT /  
EQUIPMENT DEMOLITION AND NEW**

drawn by  
dessiné par  
**PATRICK BOURGEOIS**

designed by  
conçu par  
**JASON GAUTHIER**

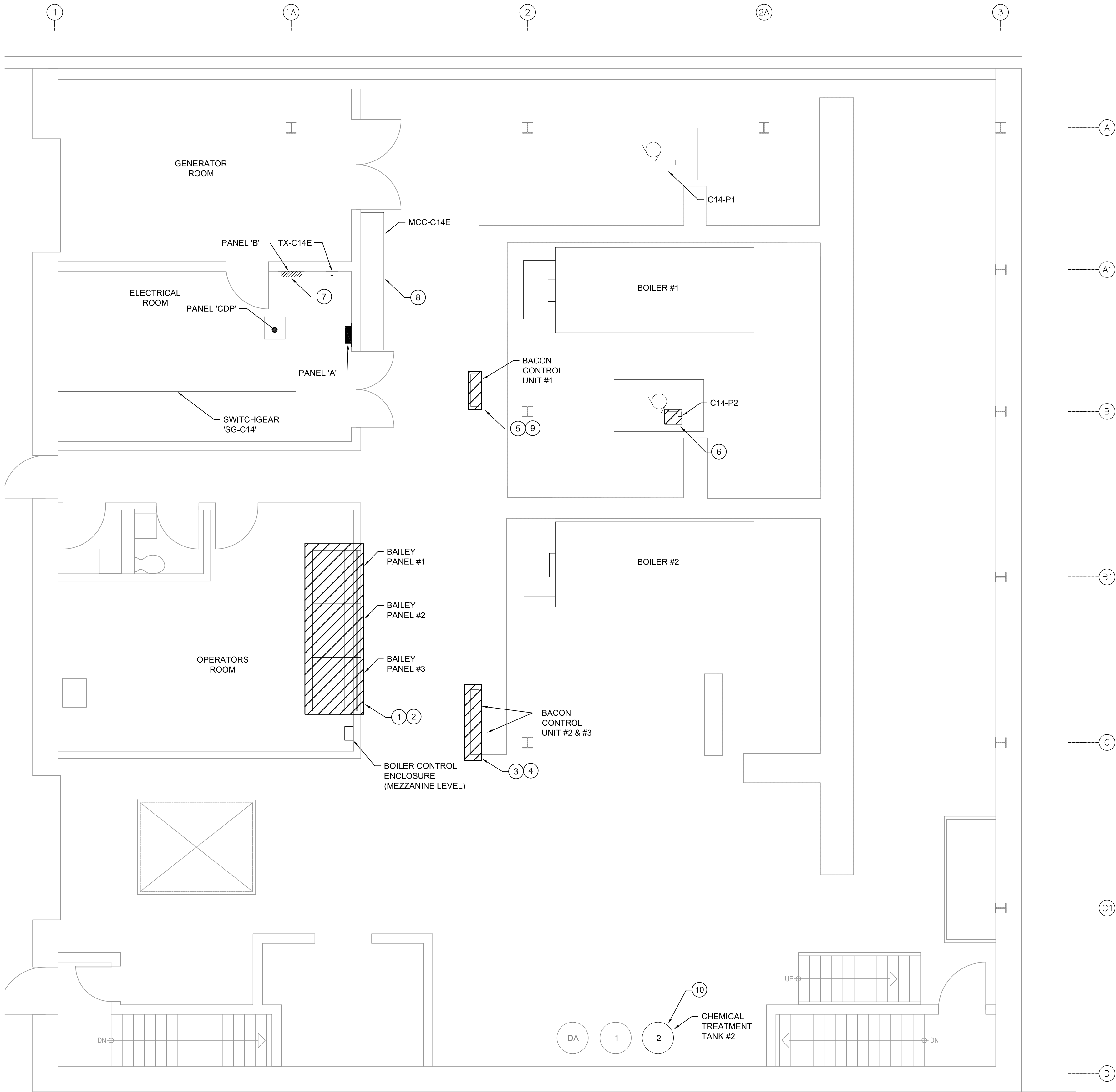
approved by  
approuvé par  
**CHERYL WHITE**

lender  
soumission  
**DUNCAN PARKER, P.ENG.** project manager  
administrateur de projets

project date  
date du projet  
**2014/04/07**



project no.  
no. du projet  
**R.068125.001**

drawing no.  
dessin no.  
**E200**



1 GROUND FLOOR ELECTRICAL EQUIPMENT LAYOUT - DEMOLITION  
E201 SCALE: 1:50

LEGEND

-  EXISTING EQUIPMENT TO BE REMOVED  
 EXISTING EQUIPMENT TO REMAIN

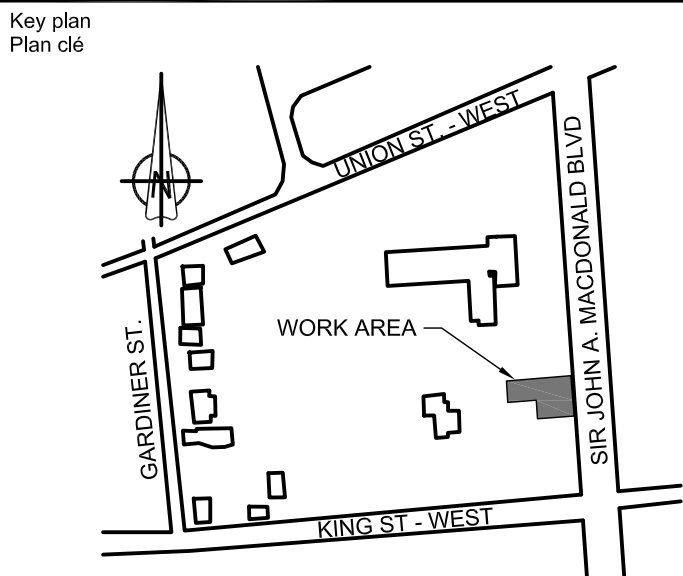
GENERAL NOTES

- EXISTING ELECTRICAL SITE SERVICES AND EQUIPMENT INDICATED IS FOR INFORMATION ONLY. CONTRACTOR TO VERIFY EXISTING SITE CONDITIONS AND EXACT LOCATIONS OF EQUIPMENT PRIOR TO CONSTRUCTION.
- CONTRACTOR SHALL COORDINATE ALL CONSTRUCTION PHASING AND LOCATIONS OF NEW MECHANICAL EQUIPMENT WITH MECHANICAL TRADE PRIOR TO CONSTRUCTION.
- ARCHITECTURAL BACKGROUNDS IN ELECTRICAL DRAWINGS ARE REPRESENTATIVE ONLY. ALTHOUGH EVERY EFFORT HAS BEEN MADE TO ENSURE THE ACCURACY OF THESE BACKGROUNDS, ACTUAL SITE CONDITIONS AND LATEST ARCHITECTURAL DOCUMENTS MAY VARY FROM ELECTRICAL DRAWINGS. CONTRACTOR SHALL VERIFY EXACT ARCHITECTURAL LAYOUT ON SITE PRIOR TO CONSTRUCTION.
- ALL EXISTING AND NEW WALL PENETRATIONS SHALL BE SEALED TO MAINTAIN EXISTING FIRE RATINGS

DRAWING NOTES

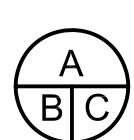


- DISCONNECT AND REMOVE BAILEY PANELS #1, #2 AND #3 INCLUDING ALL ASSOCIATED CONDUCTOR, CONTROLS, CONDUIT AND ENCLOSURES. BAILEY PANEL BREAKERS FOUND IN PANEL 'A' TO BE DISCONNECTED AND MADE SPARE. PANEL SCHEDULE TO BE UPDATED ACCORDINGLY. ALL CONDUIT BURIED IN CONCRETE SHALL BE CUT FLUSH WITH FINISHED FLOOR AND FILLED TO MATCH EXISTING FLOOR FINISH.
- CONTRACTOR SHALL REINSTATE CONCRETE BLOCK WALL TO MATCH EXISTING WALL FINISHING. CONTRACTOR TO MATCH FIRE RATING TO RATING OF EXISTING WALL ASSEMBLY.
- CONTRACTOR SHALL DISCONNECT AND REMOVE EXISTING BACON CONTROL UNITS INCLUDING CONDUCTOR, CONDUIT, CONTROLS AND ENCLOSURES. ALL CONDUCTOR AND CONDUIT FROM CONTROL UNIT #2 TO BOILER #2 TO BE REMOVED. BOILER #2 SHALL BE REMOVED BY MECHANICAL TRADE. ALL CONDUIT BURIED IN CONCRETE SHALL BE CUT FLUSH WITH FINISHED FLOOR AND FILLED TO MATCH EXISTING FLOOR FINISH. CONTRACTOR SHALL MAINTAIN ALL FIRE RATINGS OF FLOOR.
- CONTRACTOR SHALL DISCONNECT AND REMOVE BACON CONTROL UNIT POWER FROM MCC-C14E. ALL ASSOCIATED CONDUCTOR SHALL BE PULLED BACK TO MCC-C14E AND REMOVED. ASSOCIATED CONDUIT SHALL BE PULLED BACK TO BOILER CONTROL ENCLOSURE (MOUNTED ABOVE OPERATORS ROOM) AND REMOVED. EXISTING UNISTRUT SUPPORT ASSEMBLY (SUSPENDED FROM CEILING) TO REMAIN FOR FUTURE USE. EXISTING UNISTRUT SUPPORT ASSEMBLY FOR CONDUIT DROP TO CONTROL UNIT TO BE REMOVED. ASSOCIATED MCC BREAKERS FOR BACON CONTROL UNITS TO BE DISCONNECTED AND REMOVED FROM MCC-C14E AND REPLACED WITH BLANK COVERS LABELLED "SPACE".
- CONTRACTOR SHALL DISCONNECT AND REMOVE BACON CONTROL UNIT #1 POWER FROM MCC-C14E. ALL ASSOCIATED CONDUCTOR AND CONDUIT SHALL BE PULLED BACK TO MCC-C14E AND REMOVED. ALL CONCRETE ENCASED CONDUIT SHALL BE CUT FLUSH WITH FINISHED FLOOR AND FILLED TO MATCH EXISTING FLOORING MATERIAL WHILE MAINTAINING ANY EXISTING FIRE RATINGS. ASSOCIATED MCC BREAKER FOR BACON CONTROL PANEL #1 TO BE DISCONNECTED AND REMOVED FROM MCC-C14E AND REPLACED WITH BLANK COVERS LABELLED "SPACE". ALL ASSOCIATED SUSPENDED TRAYS/CONDUIT SUPPORT SYSTEMS TO REMAIN FOR FUTURE USE.
- CONTRACTOR SHALL DISCONNECT AND REMOVE 'C14-P2' POWER. ALL ASSOCIATED CONDUCTOR, CONDUIT, LOCAL DISCONNECT SWITCH AND SUPPORT SYSTEMS TO BE REMOVED BACK TO MCC-C14E. ALL CONCRETE ENCASED CONDUIT SHALL BE CUT FLUSH WITH FINISHED FLOOR AND FILLED TO MATCH EXISTING FLOORING MATERIAL. EXISTING FIRE RATINGS OF FLOOR TO BE MAINTAINED. PUMP C12-P2' TO BE REMOVED BY OTHERS. ASSOCIATED MCC STARTER FOR PUMP 'C14-P2' TO BE DISCONNECTED AND REMOVED FROM MCC-C14E AND REPLACE WITH BLANK COVERS LABELLED "SPACE".
- CONTRACTOR SHALL DISCONNECT INCOMING FEED FOR PANEL 'B' FROM MCC-C14E. ASSOCIATED CONDUCTOR, CONDUIT AND SUPPORTS TO BE REMOVED. ASSOCIATED MCC BREAKER TO BE DISCONNECTED, REMOVED AND REPLACED WITH BLANK COVER LABELLED "SPACE". CONTRACTOR SHALL FILL ANY EXISTING PENETRATIONS WITH FIRE RATED MATERIAL TO MATCH EXISTING CONDITIONS.
- CONTRACTOR SHALL INVESTIGATE THE CONDITIONS OF ALL BREAKERS AND STARTERS RESIDING IN MCC-C14E. WHERE DAMAGED BREAKERS OR STARTERS ARE FOUND, CONTRACTOR SHALL REPLACE DAMAGED EQUIPMENT WITH NEW TO MATCH EXISTING. EXISTING LABELLING TO BE MAINTAINED. CONTRACTOR SHALL NOTIFY THE DEPARTMENTAL REPRESENTATIVE OF DAMAGED EQUIPMENT PRIOR TO REPLACEMENT FOR APPROVAL TO PROCEED.
- ELECTRICAL CONTRACTOR SHALL COORDINATE ON SITE WITH MECHANICAL TRADE FOR DEMOLITION AND NEW CONSTRUCTION PHASING OF BOILER #1 POWER AND CONTROLS. CONTRACTOR SHALL ENSURE MINIMAL DOWNTIME OF BOILER #1. COORDINATE WITH DEPARTMENTAL REPRESENTATIVE AS REQUIRED.
- ELECTRICAL CONTRACTOR SHALL TEMPORARILY DISCONNECT POWER TO CHEMICAL TREATMENT TANK #2 TO ALLOW MECHANICAL TRADE TO CONDUCT PARTIAL DEMOLITION OF ASSOCIATED DEVICES. CONTRACTOR TO REINSTATE POWER ONLY AFTER MECHANICAL TRADE HAS COMPLETED THE REQUIRED WORK.

Public Works and  
Government Services Canada  
Architectural and Engineering Services  
Ontario Region  
  
Travaux publics et  
Services gouvernementaux Canada  
Services d'architecture et de génie  
Région de l'Ontario



00	ISSUED FOR TENDER	2014/07/24
00	ISSUED FOR TENDER	2014/07/24
0A	ISSUED FOR 99% REVIEW	2014/05/22
revision	description	date

Do not scale drawings.  
Verify all dimensions and conditions on site and  
immediately notify the engineer of all discrepancies.

	A Detail No. No. du détail
	B drawing no. - where detail required dessin no. - où détail exigé
	C drawing no. - where detailed dessin no. - où détaillé

project title  
titre du projet  
**OTTAWA** ONTARIO  
CLIENT  
560 KING STREET,  
KINGSTON, K7L 4V7  
**KINGSTON PENITENTIARY  
HEATING PLANT UPGRADE**

drawing title  
titre du dessin  
**GROUND FLOOR ELECTRICAL  
LAYOUT / DEMOLITION**

drawn by  
dessiné par  
**PATRICK BOURGEOIS**

designed by  
conçu par  
**JASON GAUTHIER**

approved by  
approuvé par  
**CHERYL WHITE**

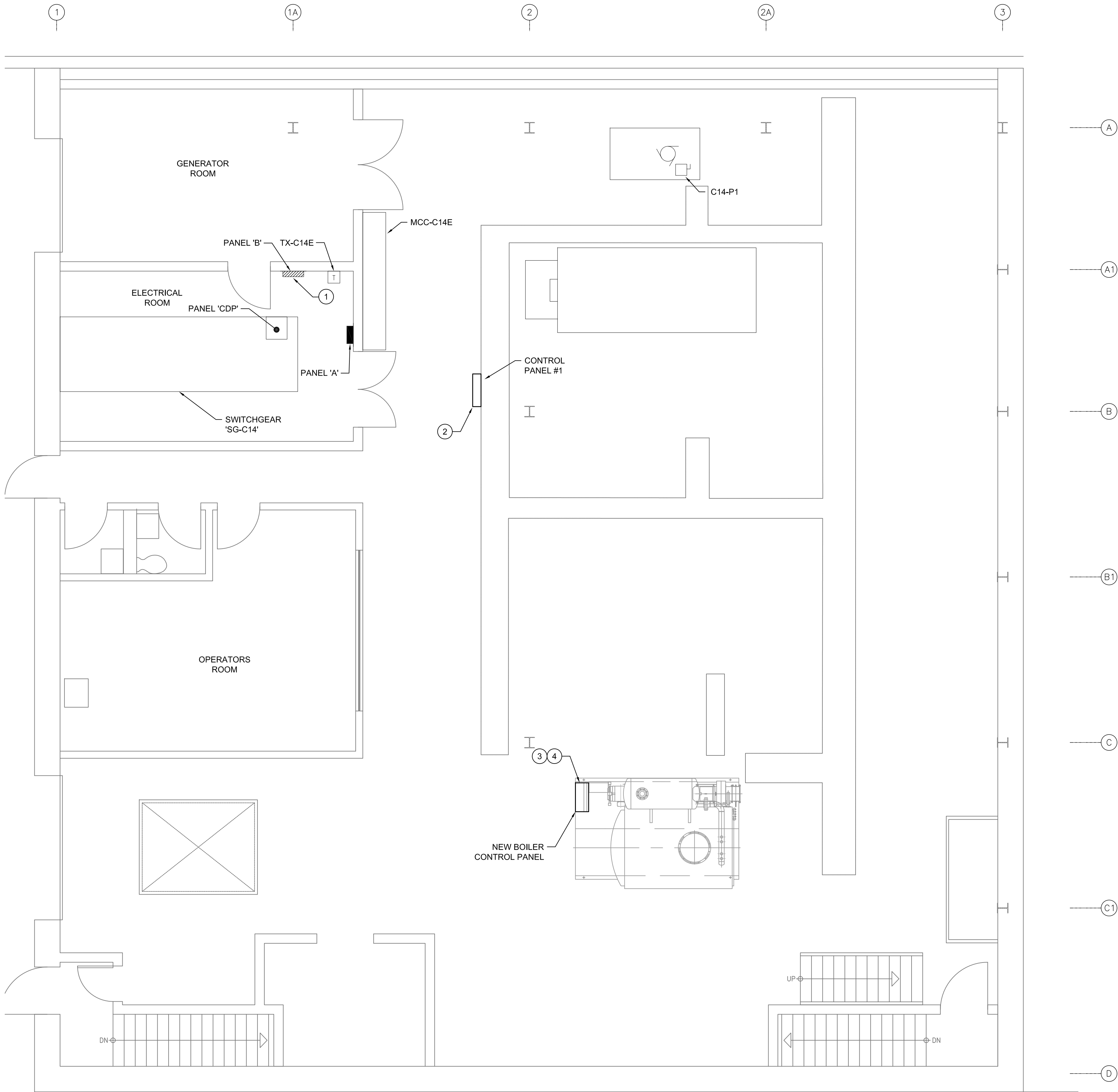
tender  
soumission  
**DUNCAN PARKER, P.ENG.**

project manager  
administrateur  
de projets

project date  
date du projet  
**2014/04/07**

project no.  
no. du projet  
**R.068125.001**

drawing no.  
dessin no.  
**E201**



**2** GROUND FLOOR ELECTRICAL EQUIPMENT LAYOUT - NEW  
E202 SCALE: 1:50

LEGEND

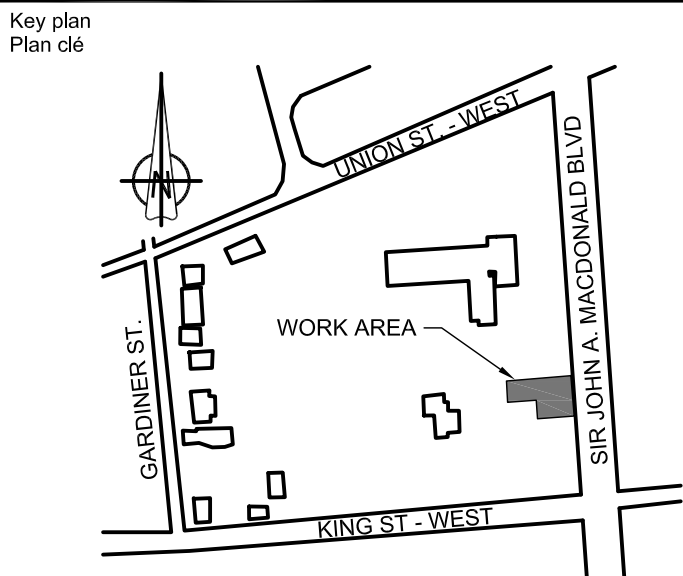
- EXISTING EQUIPMENT TO REMAIN
- NEW EQUIPMENT

GENERAL NOTES

- CONTRACTOR IS RESPONSIBLE FOR ENSURING BOILER PLANT MEETS OPERATIONAL REQUIREMENTS OF PWGSC BY OCTOBER 15, 2014. CONTRACTOR IS TO PROVIDE AND INSTALL TEMPORARY POWER TO TEMPORARY BOILERS TO MEET DEMAND IF PLANT IS DEEMED BY PWGSC TO NOT MEET OPERATIONAL REQUIREMENTS ON THIS DATE.
- DESIGN DOCUMENTS ARE BASED ON LOAD SPECIFICATIONS FOR A SPECIFIC BOILER MODEL. CONTRACTOR IS RESPONSIBLE FOR ACCOMMODATING ALL REQUIRED PROTECTION AND POWER FEEDS FOR PROPER INSTALLATION OF NEW STEAM BOILER THAT IS PROVIDED, SHOULD THE PROVIDED BOILER DEVIATE FROM THE REQUIREMENTS IDENTIFIED IN THESE DESIGN DOCUMENTS. CONTRACTOR TO VERIFY ELECTRICAL REQUIREMENTS OF NEW BOILER WITH MECHANICAL TRADE. IN THE EVENT OF DEVIATION FROM ORIGINAL DESIGN, CONTRACTOR SHALL COORDINATE CHANGES WITH ENGINEER PRIOR TO CONSTRUCTION.
- CONTRACTOR SHALL COORDINATE ALL CONSTRUCTION PHASING AND LOCATIONS OF NEW MECHANICAL EQUIPMENT WITH MECHANICAL TRADE PRIOR TO CONSTRUCTION.
- ARCHITECTURAL BACKGROUNDS IN ELECTRICAL DRAWINGS ARE REPRESENTATIVE ONLY. ALTHOUGH EVERY EFFORT HAS BEEN MADE TO ENSURE THE ACCURACY OF THESE BACKGROUNDS, ACTUAL SITE CONDITIONS AND LATEST ARCHITECTURAL DOCUMENTS MAY VARY FROM ELECTRICAL DRAWINGS. CONTRACTOR SHALL VERIFY EXACT ARCHITECTURAL LAYOUT ON SITE PRIOR TO CONSTRUCTION.

DRAWING NOTES

- CONTRACTOR SHALL PROVIDE 4 - #4AWG + #4AWG BOND - TECK90, FROM PANEL 'CDP' TO PANEL 'B'. PROVIDE 100A, 3P, 600V, BREAKER IN PANEL 'CDP'. UPDATE PANEL SCHEDULES IN BOTH PANELS TO REFLECT CHANGES.
- CONTRACTOR SHALL PROVIDE 4 - #12AWG + #12AWG BOND - 21mmC, FROM EXISTING MCC-C14E TO NEW CONTROL PANEL #1. PROVIDE ONE (1) 15A, 3P, 600V, BREAKER IN MCC-C14E AND LABEL BREAKER 'CONTROL PANEL #1'. CONTROL PANEL AND CONTROLS INFRASTRUCTURE PROVIDED BY OTHERS.
- CONTRACTOR SHALL PROVIDE 4 - #6AWG + #6AWG BOND - 41mmC, FROM EXISTING MCC-C14E TO NEW BOILER #3 DISCONNECT. DISCONNECT PROVIDED BY OTHERS. PROVIDE 50A, 600V, 3P, BREAKER IN MCC-C14E AND LABEL 'BOILER #3'.
- CONTRACTOR SHALL SUBMIT SHOP DRAWINGS FOR ALL CONDUIT SUPPORT SYSTEMS ASSOCIATED WITH 41mm CONDUIT FOR NEW BOILER #3. SHOP DRAWINGS TO BE STAMPED BY PROFESSIONAL ENGINEER LICENSED TO PRACTICE IN THE PROVINCE OF ONTARIO, SPECIALIZING IN SEISMIC RESTRAINT SYSTEMS.



00	ISSUED FOR TENDER	2014/07/24
0A	ISSUED FOR 99% REVIEW	2014/05/22
revision	description	date

Do not scale drawings.  
Verify all dimensions and conditions on site and  
immediately notify the engineer of all discrepancies.

A	Detail No.
B	No. du detail
C	drawing no. - where detail required dessin no. - où détail exigé
	drawing no. - where detailed dessin no. - où détaillé

project title  
titre du projet  
**OTTAWA** ONTARIO  
CLIENT  
560 KING STREET,  
KINGSTON, K7L 4V7  
**KINGSTON PENITENTIARY  
HEATING PLANT UPGRADE**

drawing title  
titre du dessin  
**GROUND FLOOR ELECTRICAL  
LAYOUT / NEW EQUIPMENT**

drawn by  
dessiné par  
**PATRICK BOURGEOIS**

designed by  
conçu par  
**JASON GAUTHIER**

approved by  
approuvé par  
**CHERYL WHITE**

tender  
soumission  
**DUNCAN PARKER, P.ENG.** project manager  
administrateur  
de projets

project date  
date du projet  
**2014/04/07**

project no.  
no. du projet  
**R.068125.001**

drawing no.  
dessin no.  
**E202**