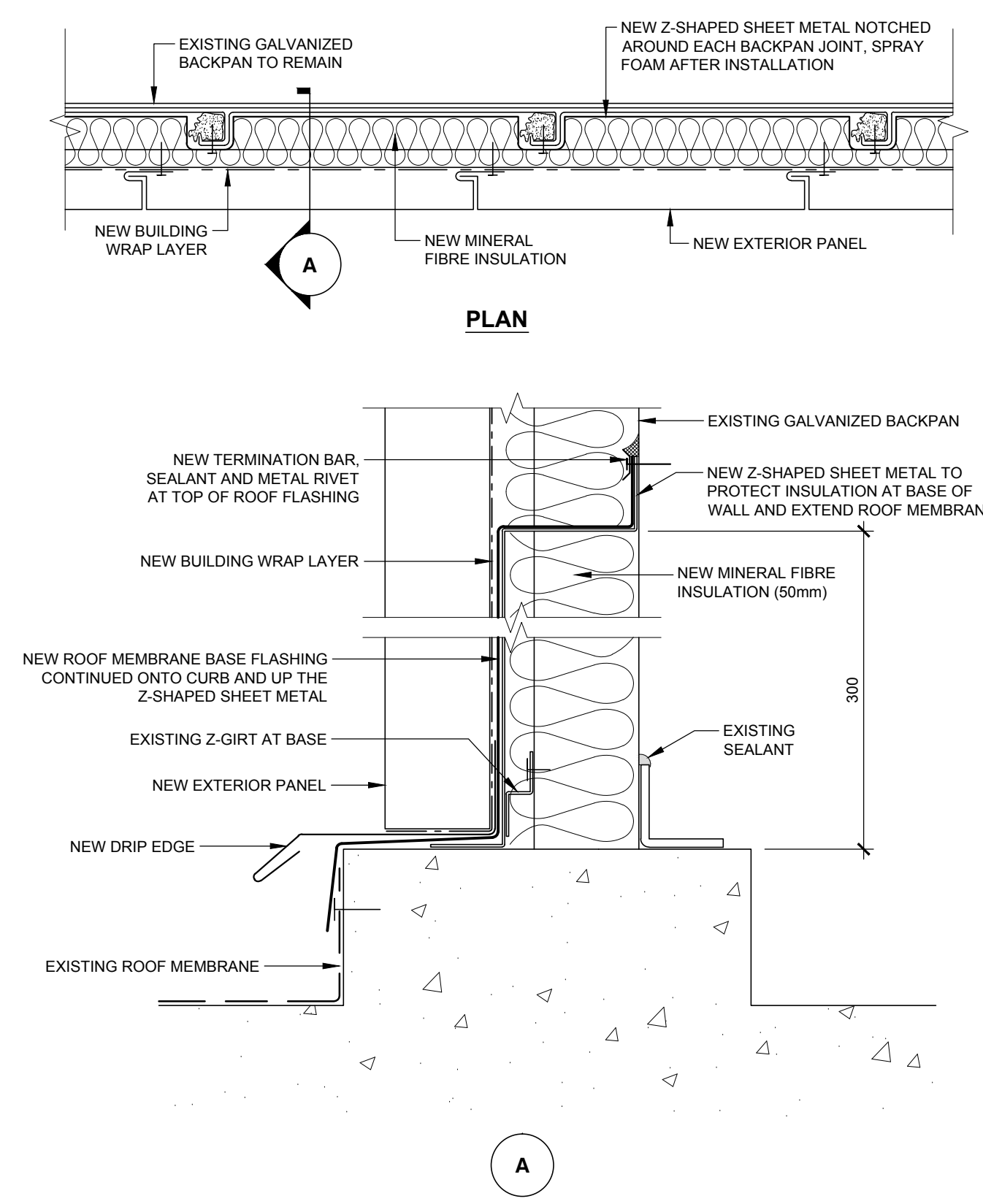
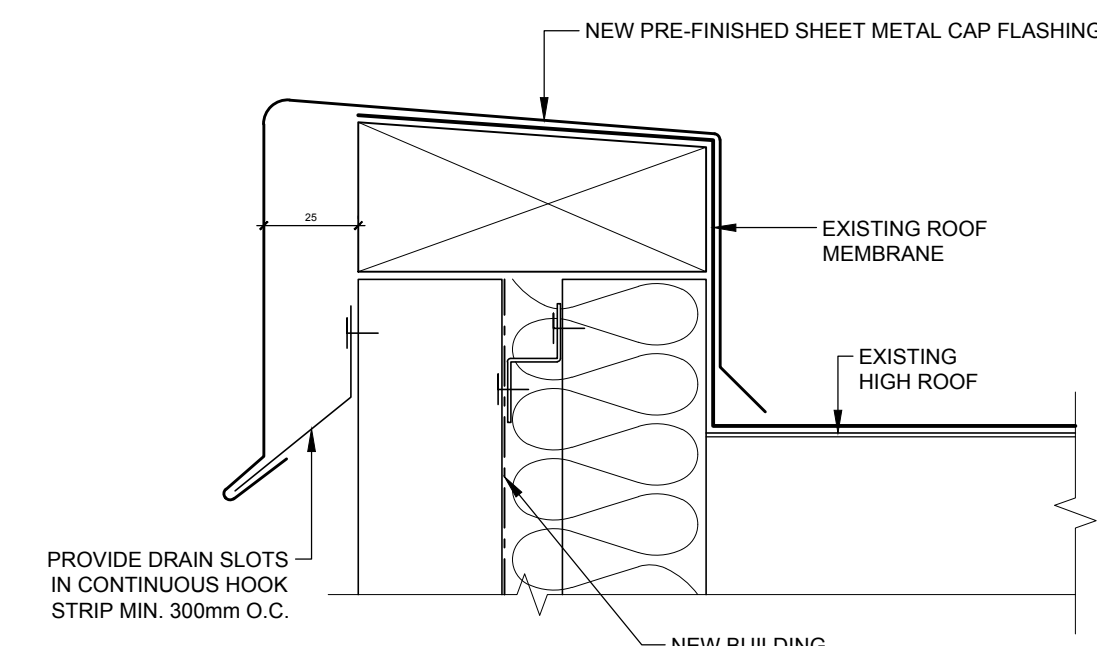


- NOTES:**
1. CONTRACTOR TO PROVIDE ENGINEERED SHOP DRAWINGS FOR NEW CLADDING SECUREMENT.
 2. ALL CLADDING TO RESIST WIND LOADS OF 1.86 kPa FOR BURLINGTON ONTARIO AS OUTLINED IN SECTION 07 46 19. PROVIDE ENGINEERED STAMPED SHOP DRAWINGS FOR REVIEW.

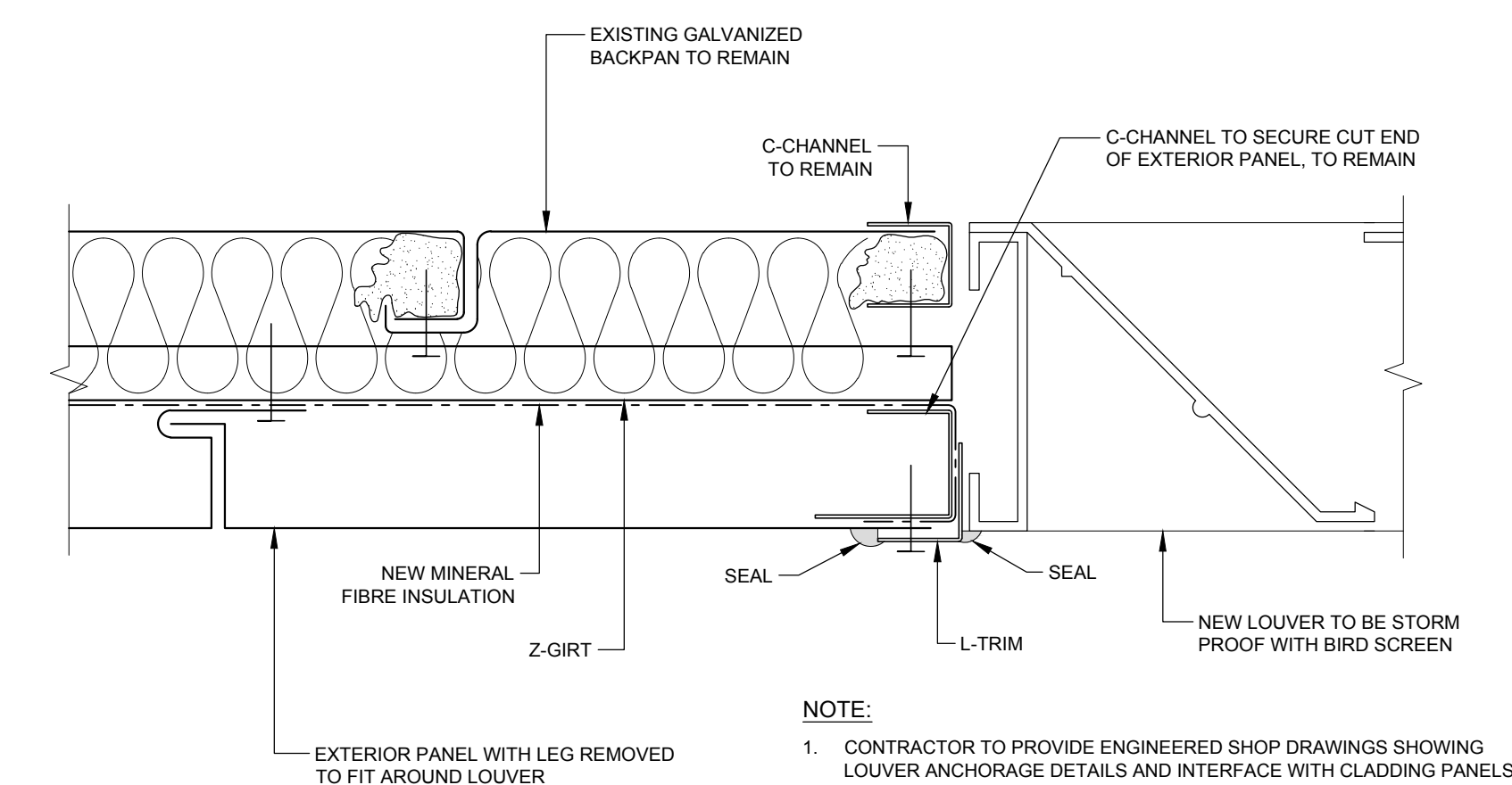
PD-1 TYPICAL WALL SECTION



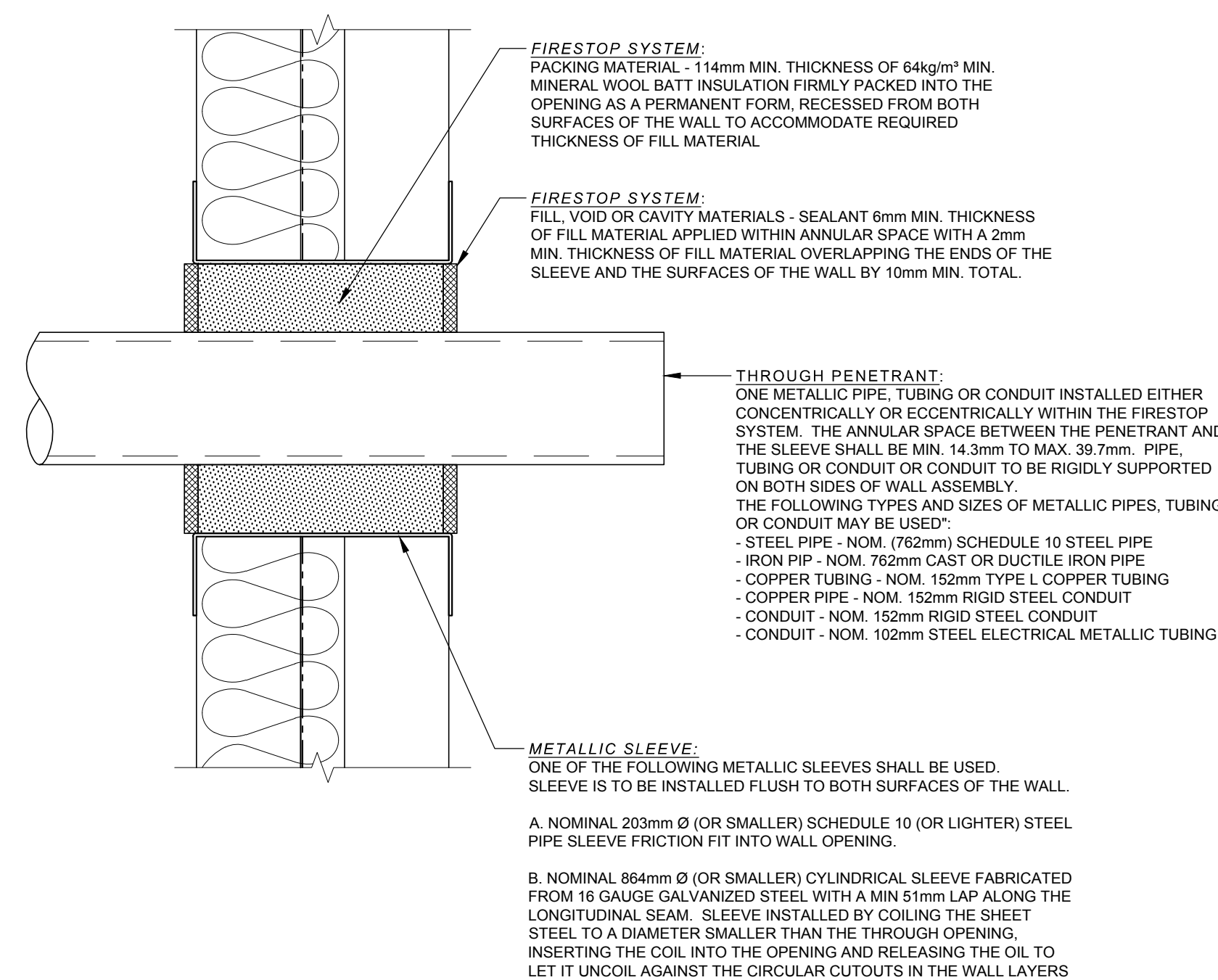
PD-2 SECTION AT BASE OF WALL WITH FOOTING



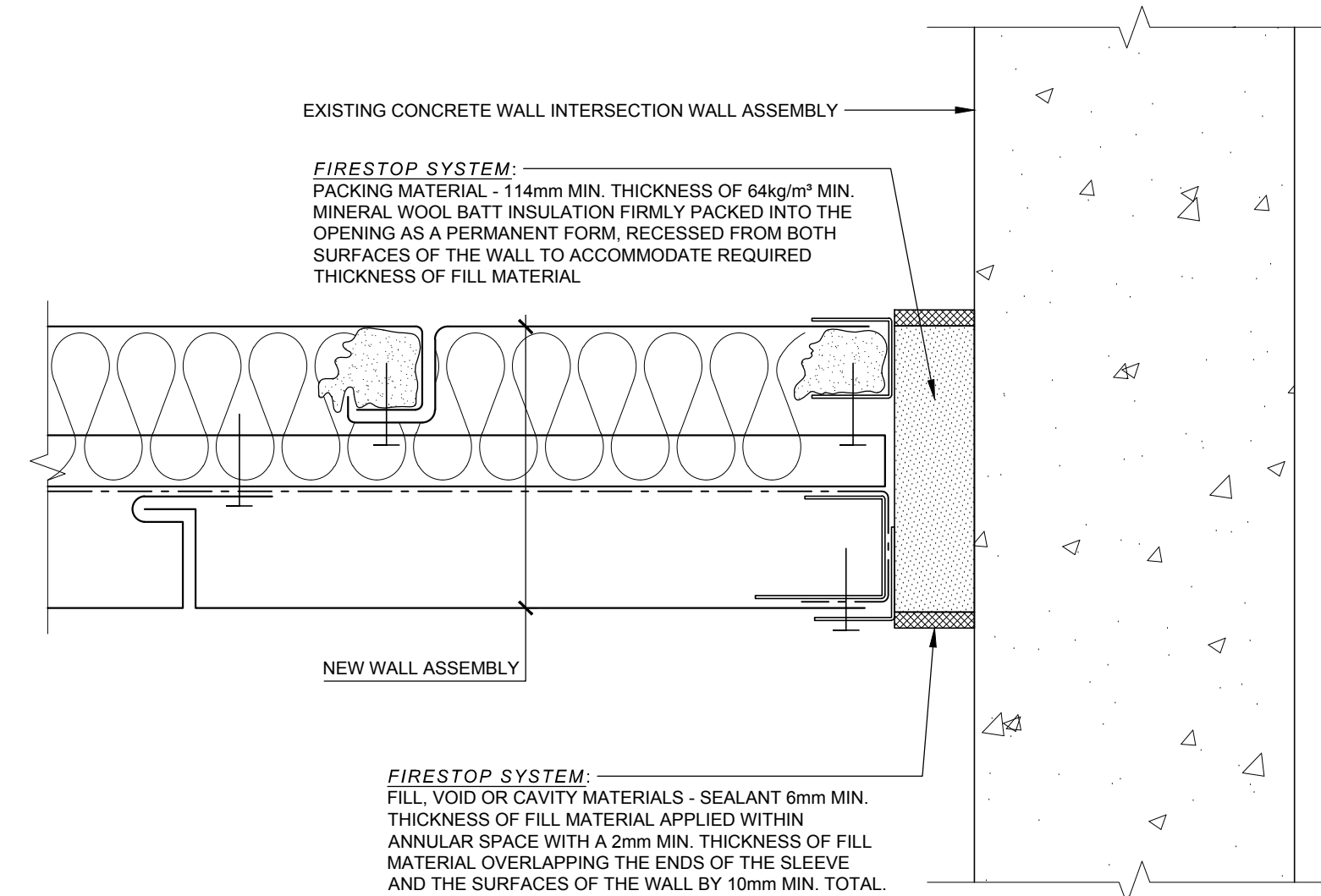
PD-3 SECTION AT TOP OF WALL



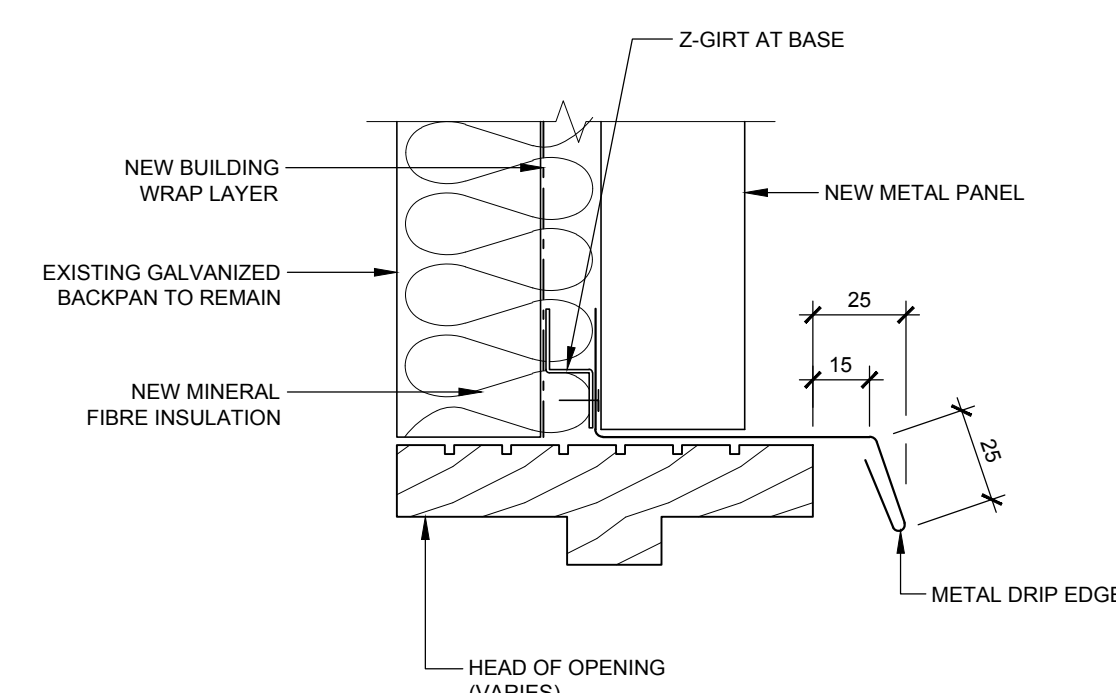
PD-4 SECTION AT LOUVER



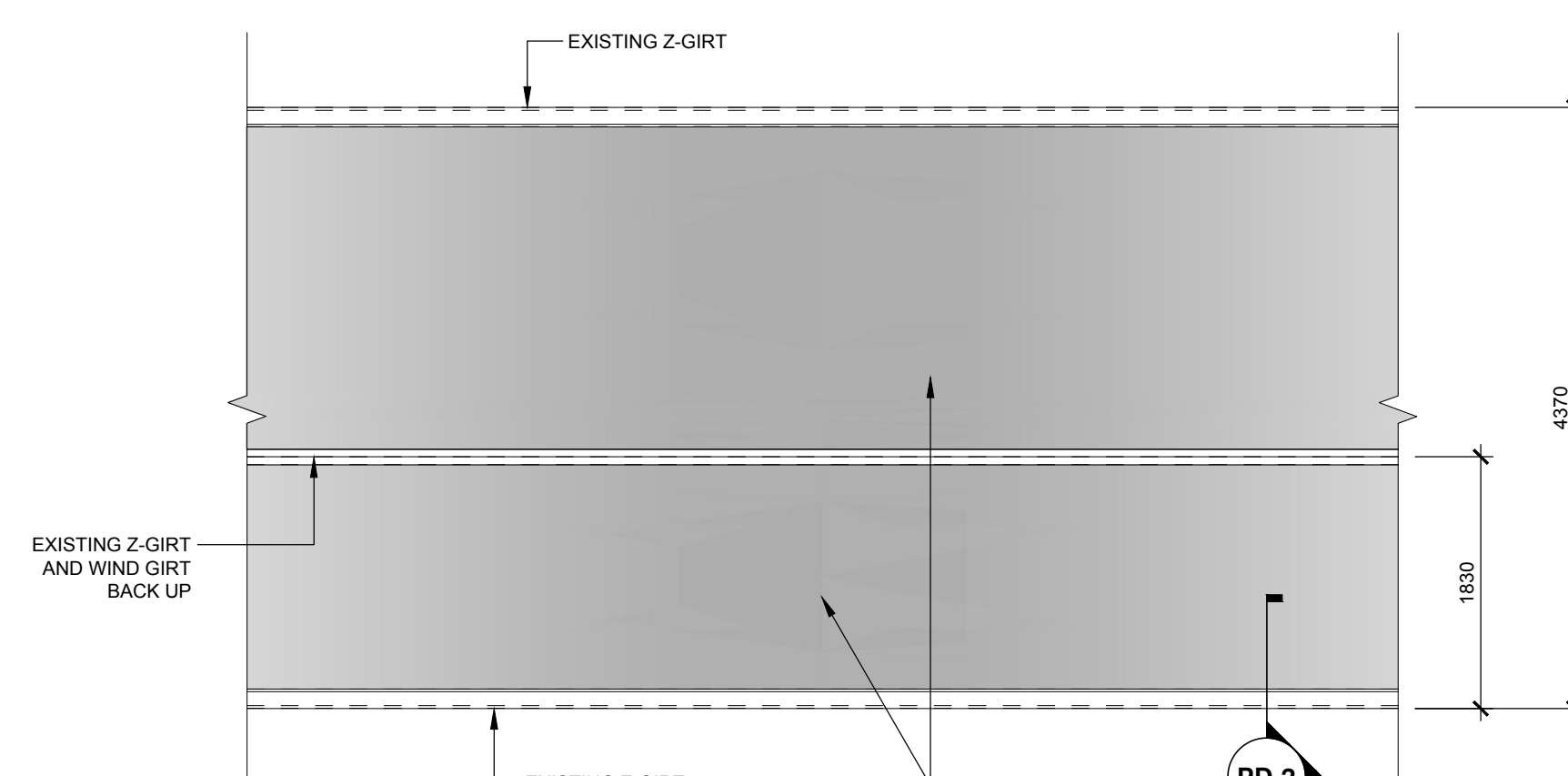
PD-5 TYPICAL PIPE PENETRATION



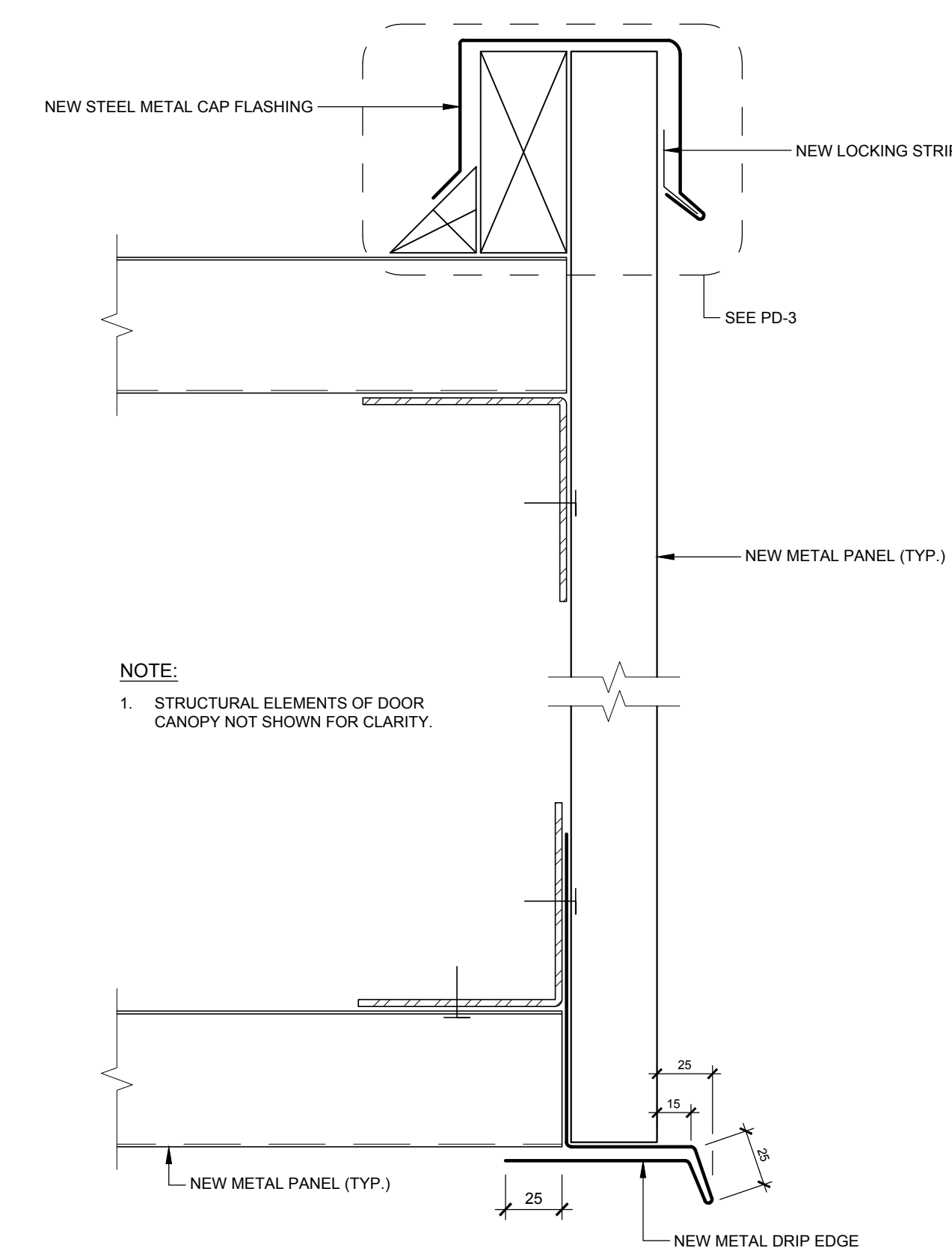
PD-6 WALL INTERSECTION



PD-7 SECTION AT HEAD OF OPENING



PD-8 TYPICAL ELEVATION VIEW OF WALL PANEL



- NOTE:**
1. DESIGN TO WIND LOAD OUTLINED IN SECTION 07 46 19.
 2. ALL CLADDING TO RESIST WIND LOADS OF 1.86 kPa FOR BURLINGTON ONTARIO AS OUTLINED IN SECTION 07 46 19. PROVIDE ENGINEERED STAMPED SHOP DRAWINGS FOR REVIEW.

PD-9 SECTION AT OVERHEAD DOOR CANOPY

Halsall

50 Leek Crescent, Suite 101
Richmond Hill, Ontario, Canada L4B 4J3

1.416.487.5256
1.888. HALSALL
1.416.487.9766
www.halsall.com



CCIW-004-J2959

04		
03		
02		
01	ISSUED FOR TENDER	15 May 2014
revision		date

Do not scale drawings.
Verify all dimensions and conditions on site and immediately
notify the Departmental Representative of all discrepancies.

A	Detail No.
B	No. du détail
C	drawing no. - où détail requis
	drawing no. - où détail requis

project title
titre du projet
BURLINGTON Ontario
CANADA CENTRE FOR INLAND WATERS
867 LAKESHORE ROAD

METAL CLADDING REPLACEMENT

drawing title
titre du dessin
PROJECT DETAILS

drawn by dessiné par	SGU
designed by conçu par	GJM
approved by approuvé par	EC
bid offre	project manager administrateur de projet A.M.
project date date du projet	2014-05-15
project no. no. du projet	CCIW-004-J2959
drawing no. dessiné no.	A-3