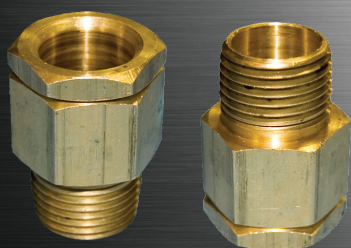


# Pro

## Accessories

## ProGland TUBE



### APPLICATIONS

- Marine and watertight requirements
- Oil and gas exploration and production
- Ship construction

### APPROVAL

- ABS

### TECHNICAL SPECIFICATIONS

#### BODY/PACKING & LOCK NUT/WASHER

Marine brass.

#### FLAX PACKING

Asbestos free, wax impregnated rovings. Sold separately.

### FEATURES

- Marine brass construction.
- Through bulkhead types in three nipple lengths, supplied with locknuts.
- Constructed to conform to marine specifications for armored cable, rubber covered cable and flexible conduit.

### STUFFING TERMINAL TUBES MALE AND FEMALE

TERMINAL TUBE	NIPPLE LENGTH	FEMALE TUBE	NPT SIZE	BORE SIZE
INX1500-M1	5/8"	INX1520-F1	3/8"	1/2"
INX1502-M2	5/8"	INX1522-F2	1/2"	5/8"
		INX1524-F3	3/4"	5/8"
INX1506-M4	5/8"	INX1526-F4	3/4"	3/16"
INX1508-M6	5/8"	INX1528-F6	1"	1 1/16"
INX1510-M8	5/8"	INX1530-F8	1 1/4"	1 3/8"
INX1512-M10	5/8"	INX1532-F10	1 1/2"	1 5/8"
INX1516-M12	5/8"	INX1536-F12	2"	2 1/16"
INX1518-M13	5/8"	INX1538-F13	2 1/2"	2 1/2"
INX1575-M14	1"	INX1576-F14	3"	3"
INX1577-M15	1 1/8"	INX1578-F15	3 1/2"	3 1/2"
INX1579-M16	1 1/4"	N/A	4"	4"

### FLAX PACKING

Part No.	Size
CX8051-1/8	1/8"
CX8051-1/4	1/4"

### THROUGH BULKHEAD STUFFING TUBES

TYPE A	NIPPLE LENGTH	TYPE B	NIPPLE LENGTH	TYPE C	NIPPLE LENGTH	NPS SIZE	BORE SIZE	CLEARANCE HOLE SIZE
INX1501-S1A	1 3/8"	INX1521-S1B	1 7/8"	INX1541-S1C	4 1/2"	3/8"	1/2"	5/8"
INX1503-S2A	1 3/8"	INX1523-S2B	1 7/8"	INX1543-S2C	4 1/2"	1/2"	5/8"	7/8"
		INX1525-S3B	1 7/8"	INX1545-S3C	4 1/2"	3/4"	3/4"	1 1/16"
INX1507-S4A	1 3/8"	INX1527-S4B	1 7/8"	INX1547-S4C	4 1/2"	3/4"	3/16"	1 1/16"
INX1509-S6A	1 1/2"	INX1529-S6B	2 1/8"	INX1549-S6C	4 9/16"	1"	1 1/16"	1 5/16"
INX1511-S8A	1 1/2"	INX1531-S8B	2 1/4"	INX1551-S8C	4 5/8"	1 1/4"	1 3/8"	1 11/16"
INX1513-S10	1 3/8"	INX1533-S10B	2 3/8"	INX1553-S10C	4 3/4"	1 1/2"	1 5/8"	1 15/16"
		INX1535-S11B	2 1/2"	INX1555-S11C	4 13/16"	2"	1 7/8"	2 1/16"
INX1517-S12A	1 3/4"	INX1537-S23B	2 1/2"	INX1557-S12C	4 13/16"	2"	2 1/16"	2 1/16"
INX1519-S13A	2"	INX1539-S13B	2 3/4"	INX1559-S13C	4 15/16"	2 1/2"	2 1/2"	2 7/8"
INX1573-S14A	2 1/4"	INX1574-S14B	3"	INX1560-S14C	5 1/8"	3"	3"	3 1/2"