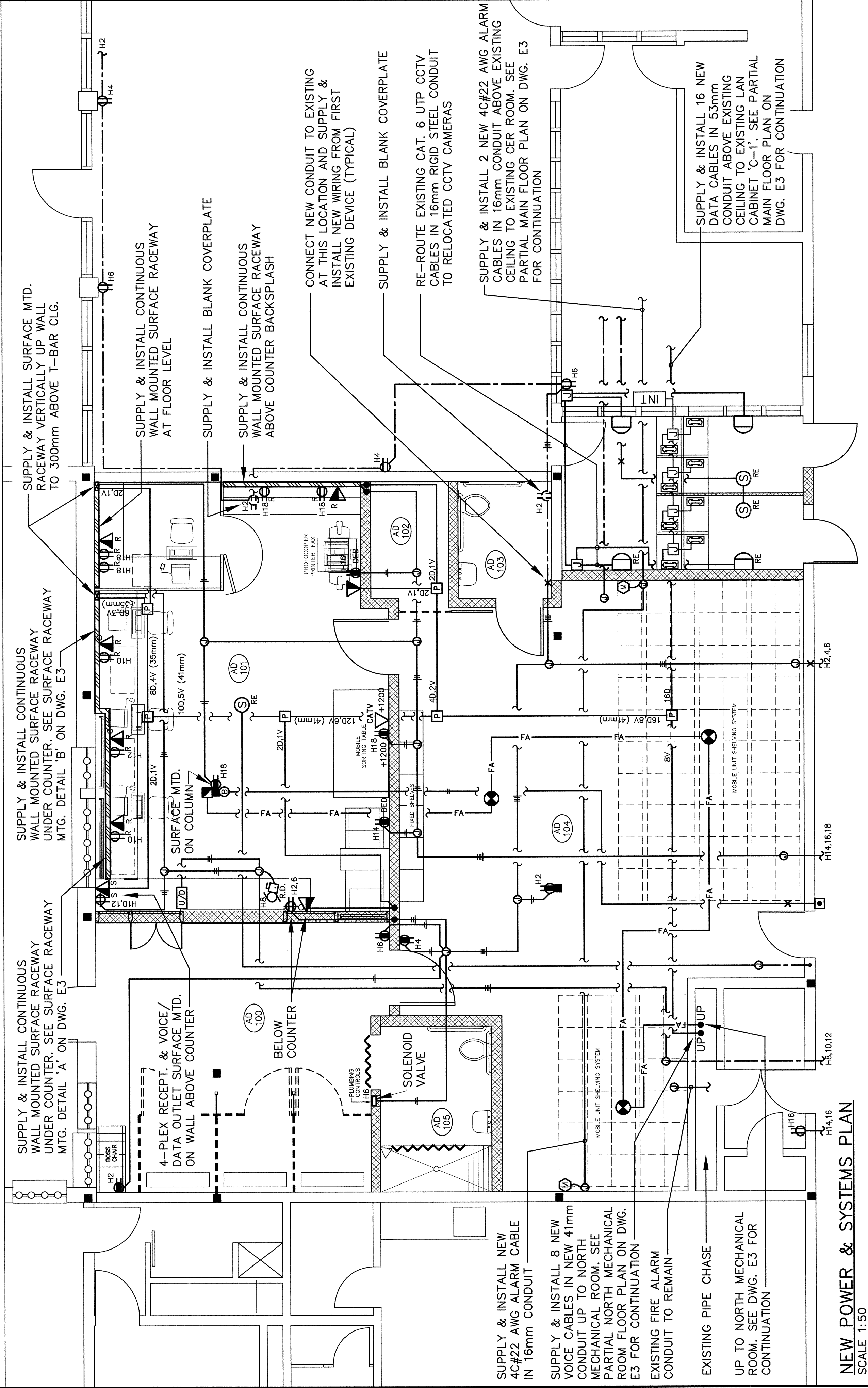


EXISTING POWER & SYSTEMS PLAN
SCALE 1:50



NEW POWER & SYSTEMS PLAN
SCALE 1:50

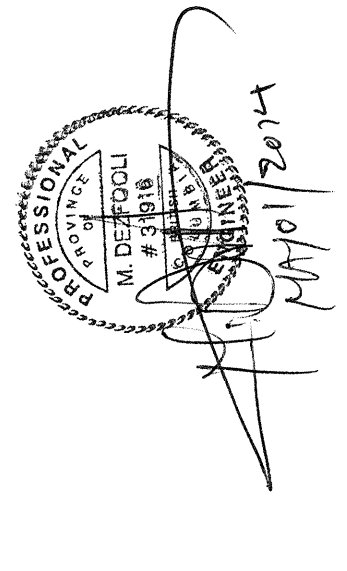
PHW52 - B1 - 10060707

DRAWING E2 SYMBOL LEGEND

- REMOVE EXISTING CONDUIT AND WIRING
- - - - - REMOVE EXISTING SURFACE MOUNTED CONDUIT/RACEWAY & WIRING
- - - - - EXISTING CONDUIT AND WIRING TO REMAIN UNLESS NOTED OTHERWISE
- SUPPLY & INSTALL NEW CONDUIT AND WIRING
- 100.0V (35mm) SUPPLY & INSTALL NEW SURFACE MOUNTED RACEWAY
- REMOVE EXISTING FLUSH MOUNTED DUPLEX RECEPTACLE AND ALL ASSOCIATED WIRING, SUPPLY & INSTALL NEW STAINLESS STEEL COVERPLATE RIVETED TO OUTLET BOX WHERE INDICATED
- REMOVE EXISTING SURFACE MOUNTED DUPLEX RECEPTACLE AND ALL ASSOCIATED WIRING
- REMOVE EXISTING GROUND FAULT RECEPTACLE AND ALL ASSOCIATED WIRING
- EXISTING FLUSH MOUNTED RECEPTACLE TO REMAIN
- SUPPLY & INSTALL NEW FLUSH MOUNTED DUPLEX RECEPTACLE (UNLESS NOTED AS SURFACE MOUNTED)
- SUPPLY & INSTALL NEW FLUSH MOUNTED DUPLEX RECEPTACLE CONNECTED TO DEDICATED CIRCUIT
- SUPPLY & INSTALL NEW FLUSH MOUNTED 4-PLEX RECEPTACLE
- SUPPLY & INSTALL NEW SURFACE MOUNTED 4-PLEX RECEPTACLE
- SUPPLY & INSTALL NEW DUPLEX RECEPTACLE IN NEW SURFACE MOUNTED RACEWAY
- REMOVE EXISTING DATA JACKS, SURFACE BOX AND ALL ASSOCIATED CONDUIT & WIRING. REMOVE ENTIRE LENGTH OF CABLES FROM EXISTING LAN CABINET 'C-1'
- REMOVE EXISTING TELEPHONE JACK, OUTLET BOX AND ALL ASSOCIATED CONDUIT AND WIRING
- REMOVE EXISTING ABANDONED SURFACE MOUNTED OUTLET BOX AND ALL ASSOCIATED CONDUIT AND WIRING
- SUPPLY & INSTALL 2 NEW DATA JACKS AND 1 NEW VOICE JACK IN FLUSH MOUNTED OUTLET BOX. EACH LOCATION TO CONSIST OF 102mm SQUARE OUTLET BOX C/W SINGLE DEVICE MUD RING AND 21mm EMT CONDUIT TO PULL BOX ABOVE T-BAR CEILING
- SUPPLY & INSTALL 2 NEW DATA JACKS AND 1 NEW VOICE JACK IN NEW SURFACE MOUNTED RACEWAY
- SUPPLY & INSTALL 2 NEW DATA JACKS AND 1 NEW VOICE JACK IN NEW SURFACE MOUNTED BOX
- REMOVE OR RELOCATE AS INDICATED EXISTING PUBLIC ADDRESS SYSTEM CEILING MOUNTED SPEAKER IN THIS LOCATION
- RE-INSTALL EXISTING PUBLIC ADDRESS SYSTEM CEILING MOUNTED SPEAKER IN THIS LOCATION
- REMOVE EXISTING FIRE ALARM SYSTEM JUNCTION BOX
- EXISTING FIRE ALARM SYSTEM JUNCTION BOX TO REMAIN
- SUPPLY & INSTALL NEW FIRE ALARM SYSTEM 2-STAGE MANUAL PULL STATION
- SUPPLY & INSTALL NEW FIRE ALARM SYSTEM CEILING MOUNTED SMOKE DETECTOR
- SUPPLY & INSTALL NEW FIRE ALARM SYSTEM CONDUIT & WIRING
- REMOVE EXISTING WALL MOUNTED BUZZER
- EXISTING DOOR BUZZER PUSHBUTTON TO REMAIN
- REMOVE AND RELOCATE EXISTING CEILING MTD. DOOR BUZZER
- SUPPLY & INSTALL NEW 300x300x100mm DEEP PULL BOX
- RE-INSTALL EXISTING DOOR BUZZER TO THIS LOCATION MOUNTED AT 2400mm A.F.F.
- REMOVE AND RELOCATE EXISTING WALL MOUNTED CCTV CAMERA
- EXISTING WALL MOUNTED CCTV CAMERA TO REMAIN
- RE-INSTALL EXISTING CCTV CAMERA IN THIS LOCATION MOUNTED AT SAME HEIGHT AS EXISTING
- SUPPLY & INSTALL NEW DOOR POSITION SWITCH ON WALL AND FIRST MOBILE SHELVING UNIT – SEE DETAIL ON DWG. E3
- DISCONNECT EXISTING MOTORIZED ROLL-UP DOOR AND REMOVE ALL ASSOCIATED CONDUIT AND WIRING
- NEW MOTORIZED ROLL-UP DOOR
- NEW ROLL-UP DOOR UP-DOWN PUSHBUTTON CONTROLS
- SUPPLY & INSTALL NEW MOTOR DISCONNECT SWITCH
- REMOVE EXISTING CATV OUTLET AND RE-ROUTE EXISTING COAX CABLE TO NEW CATV OUTLET LOCATION
- SUPPLY & INSTALL NEW WALL MOUNTED CATV OUTLET & 'F' CONNECTOR
- REMOVE EXISTING INTERCOM HANDSET AND TURN OVER TO PHW52
- EXISTING INTERCOM HANDSET TO REMAIN
- EXISTING RESTRICTED VISITS INTERCOM SYSTEM TERMINATION CABINET AND CONTROL PANEL TO REMAIN

NOTES

- EXISTING CONDUIT, WIRING AND CIRCUITING INDICATED ON PLANS IS IN ACCORDANCE WITH THE ORIGINAL AS-BUILT DRAWINGS FOR KENT INSTITUTION AND IS NOT TO BE CONSIDERED 100% ACCURATE. CONTRACTOR SHALL CONFIRM ALL EXISTING CONDUIT, WIRING AND CIRCUITING PRIOR TO DEMOLITION AND MODIFY ALL NEW CONDUIT, WIRING AND CIRCUIT NUMBERS AS REQUIRED AND INDICATE CHANGES ON NEW AS-BUILT DRAWINGS.



ISSUED FOR TENDER	APR. 20/14
ISSUED FOR ONS TECHNICAL REVIEW	FEB. 6/14
Revised/Revisé	Date/Date
0	
Description/Description	
Client/Client	

CORRECTIONAL SERVICE
OF
CANADA

Project title/Titre du projet

AGASSIZ B.C.
KENT INSTITUTION
A AND D
REDEVELOPMENT

Consultant Signature Box Only

Designed by/Conçue par

Drawn by/Dessiné par

PHW52 Project Manager/Administrateur de Projets PHW52

DATE: 2014/02/06

Revised/Revisé

Revised/Revisé

Project No./No. du projet

Revision no./

0