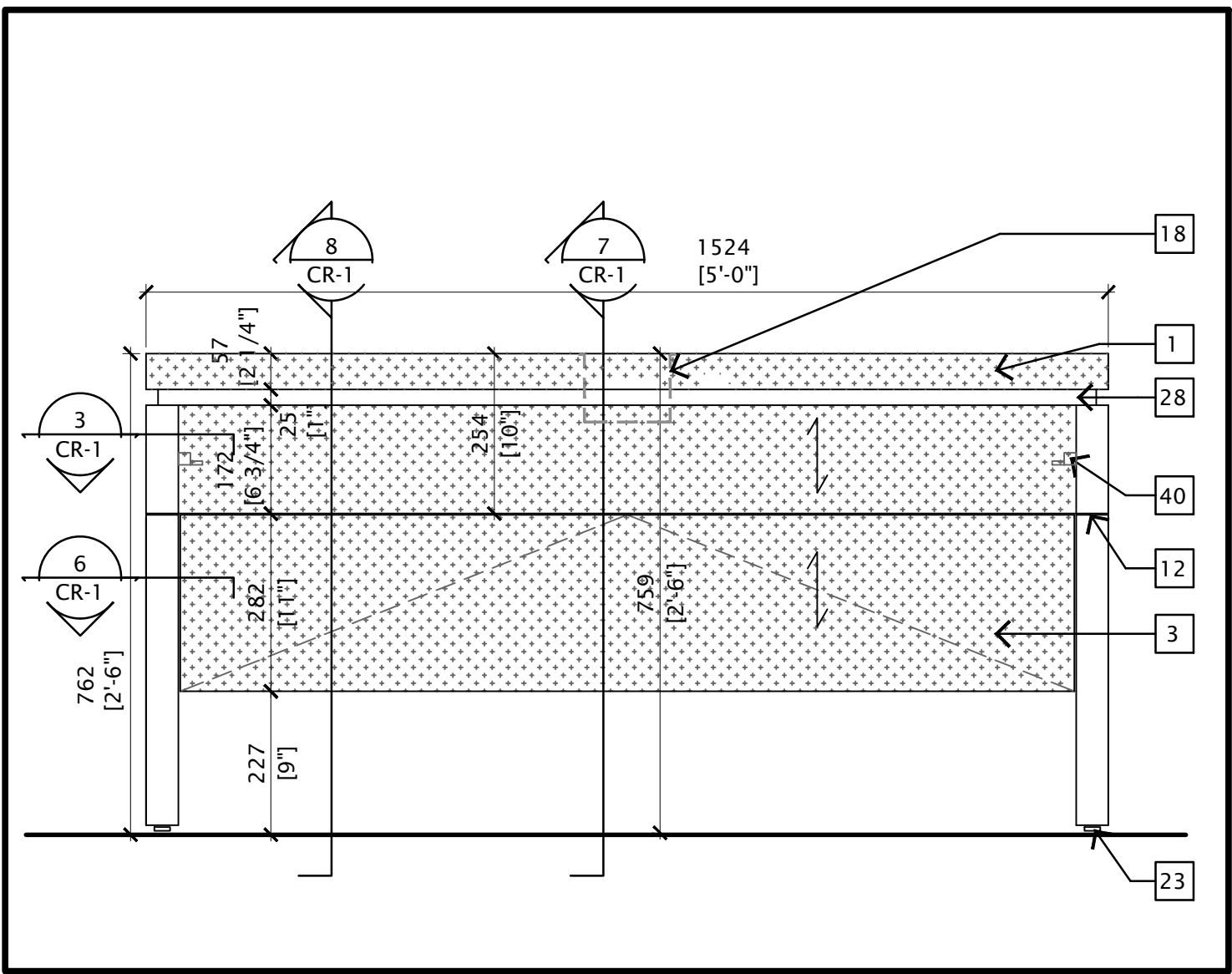
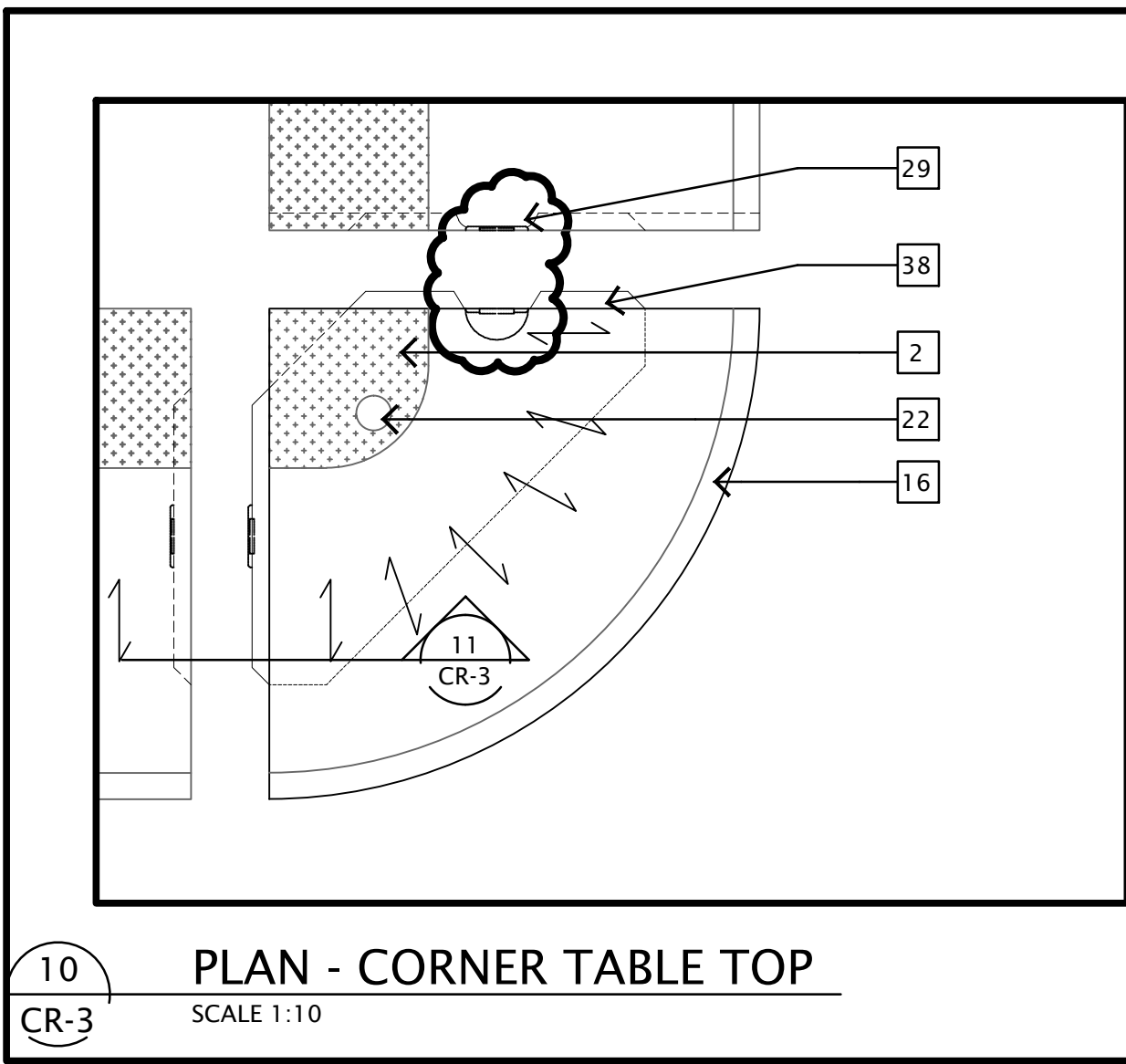


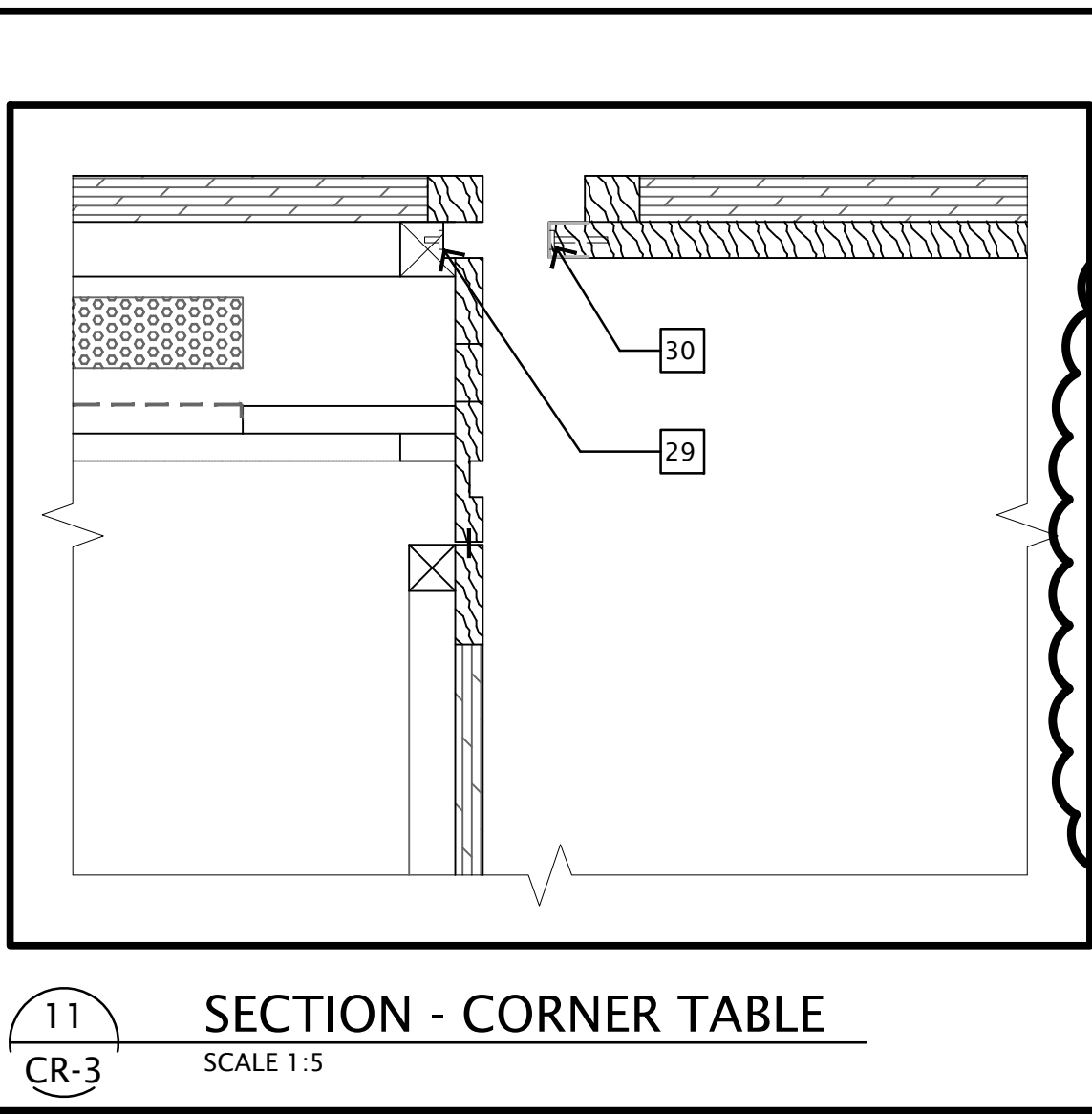
1 PLAN
CR-1
SCALE 1:10



2 FRONT ELEVATION
CR-1
SCALE 1:10

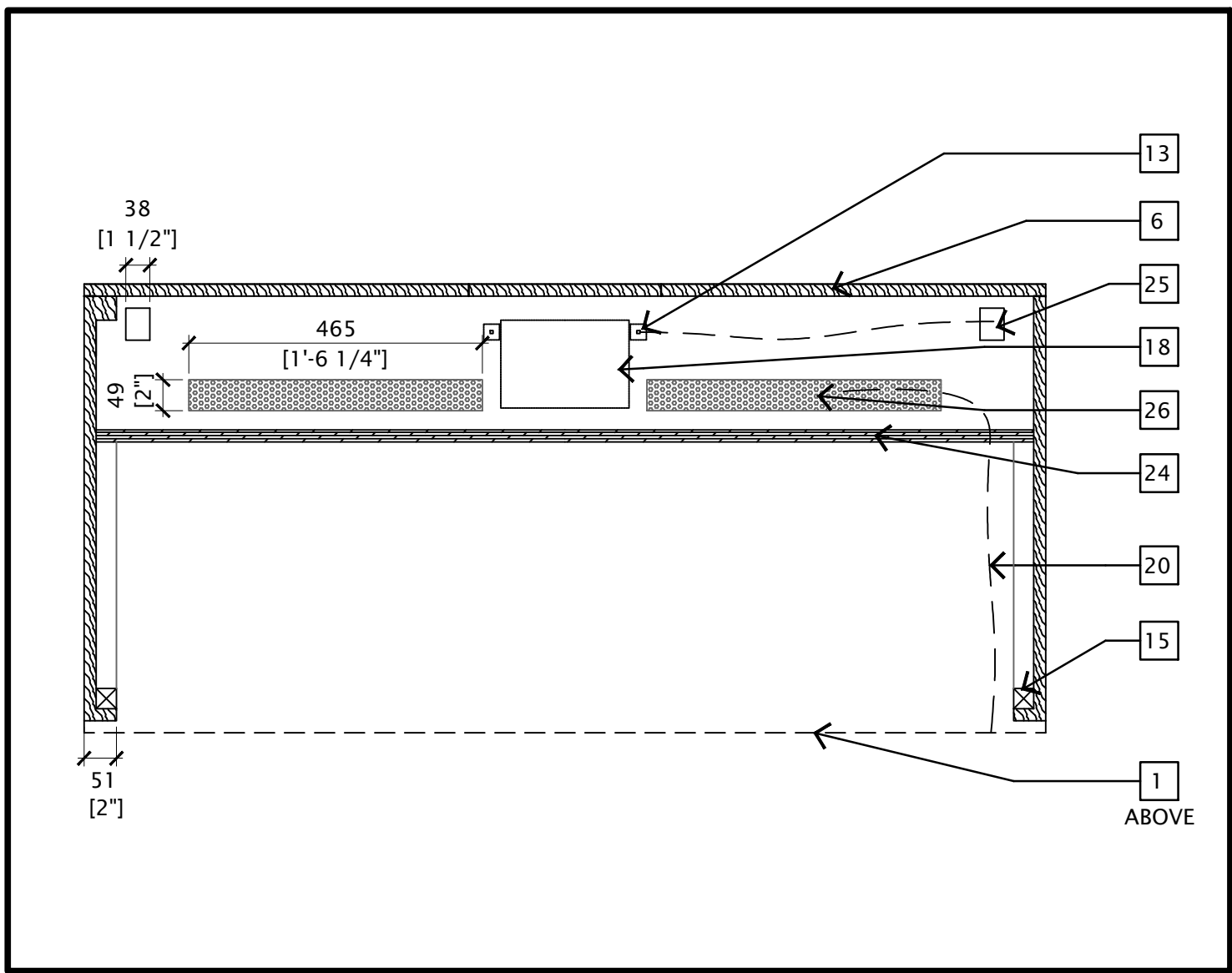


10 PLAN - CORNER TABLE TOP
CR-3
SCALE 1:10

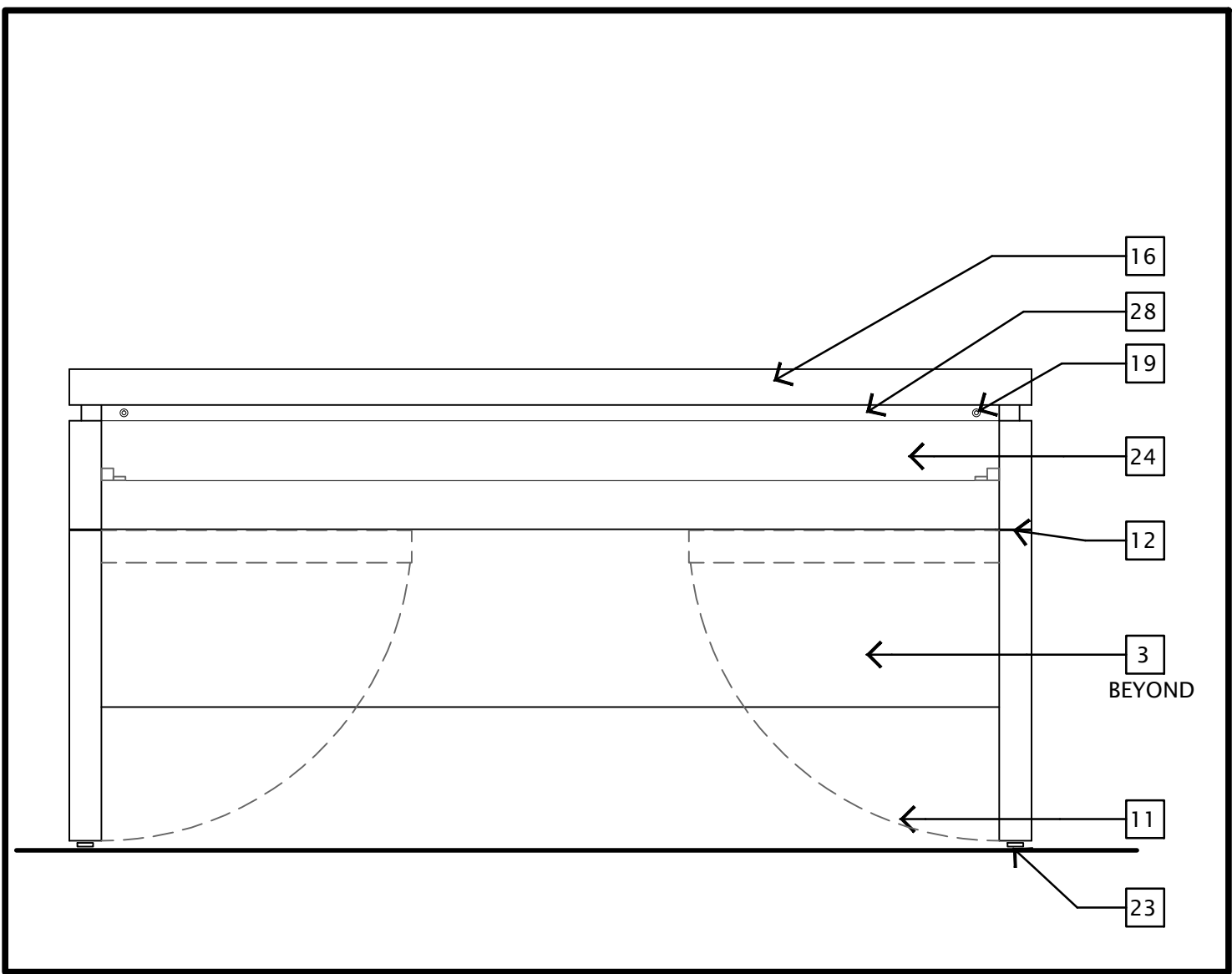


11 SECTION - CORNER TABLE
CR-3
SCALE 1:5

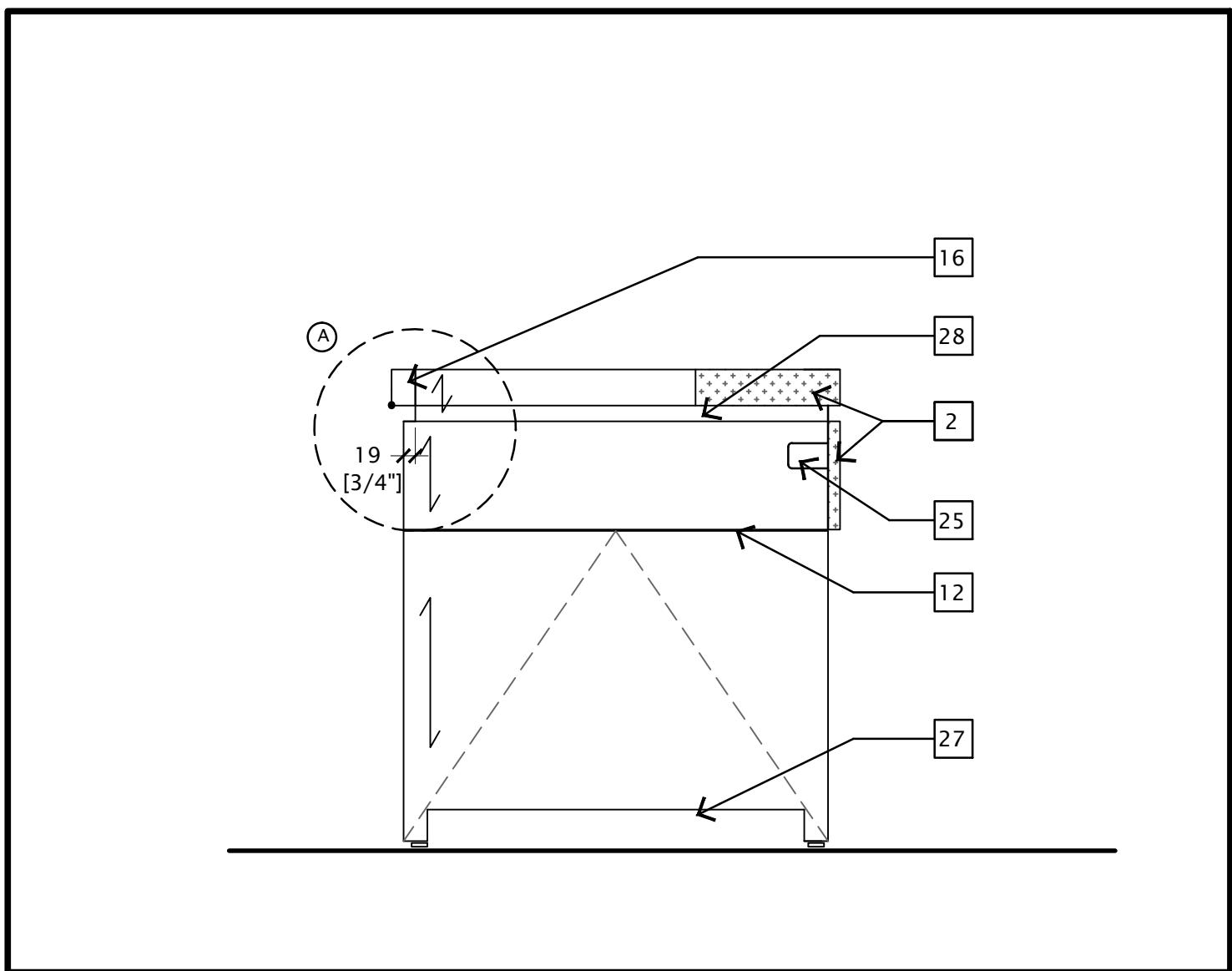
CORNER TABLE (CR-3)



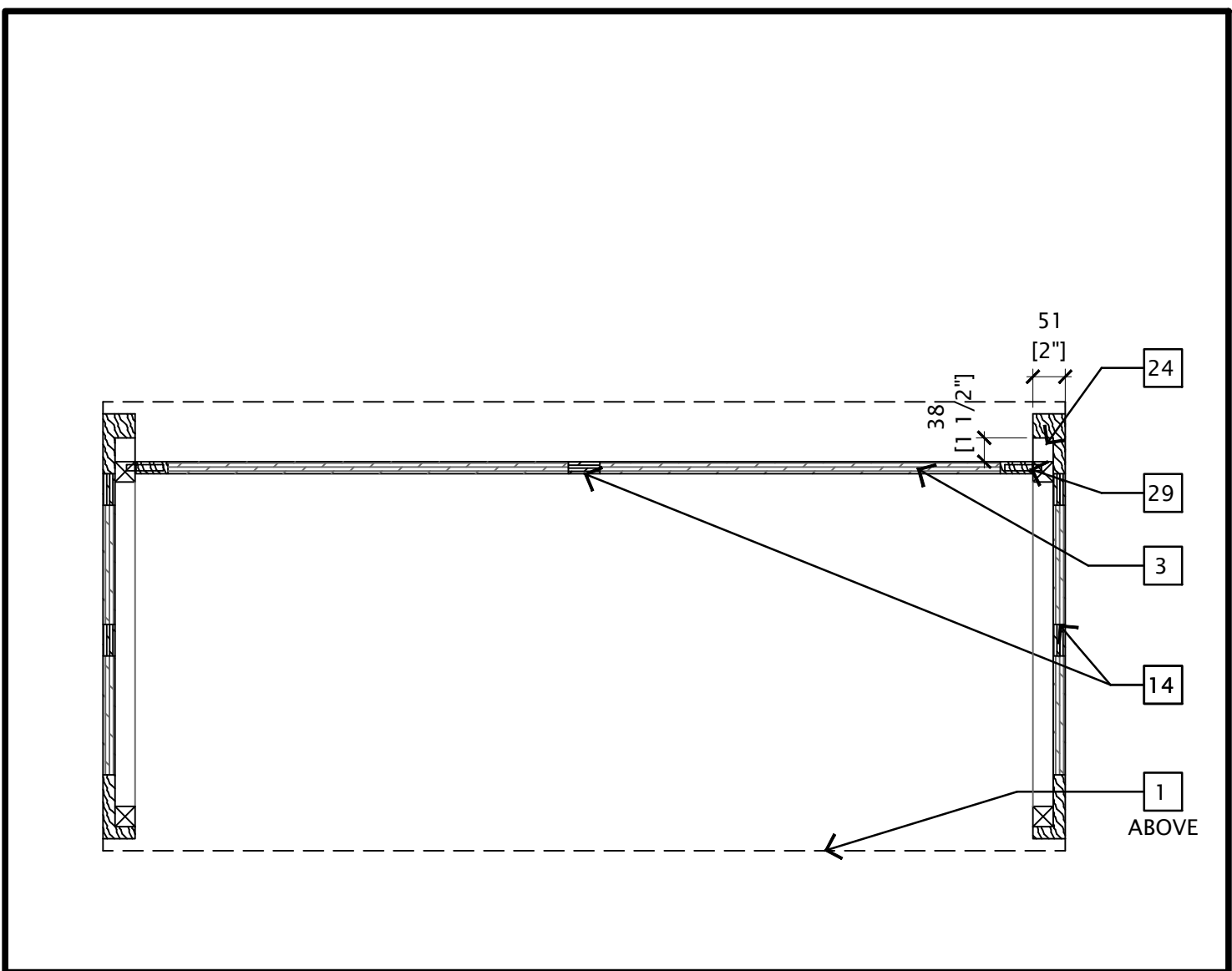
3 PLAN CROSS SECTION - WIRE MANAGEMENT TRAY
CR-1
SCALE 1:10



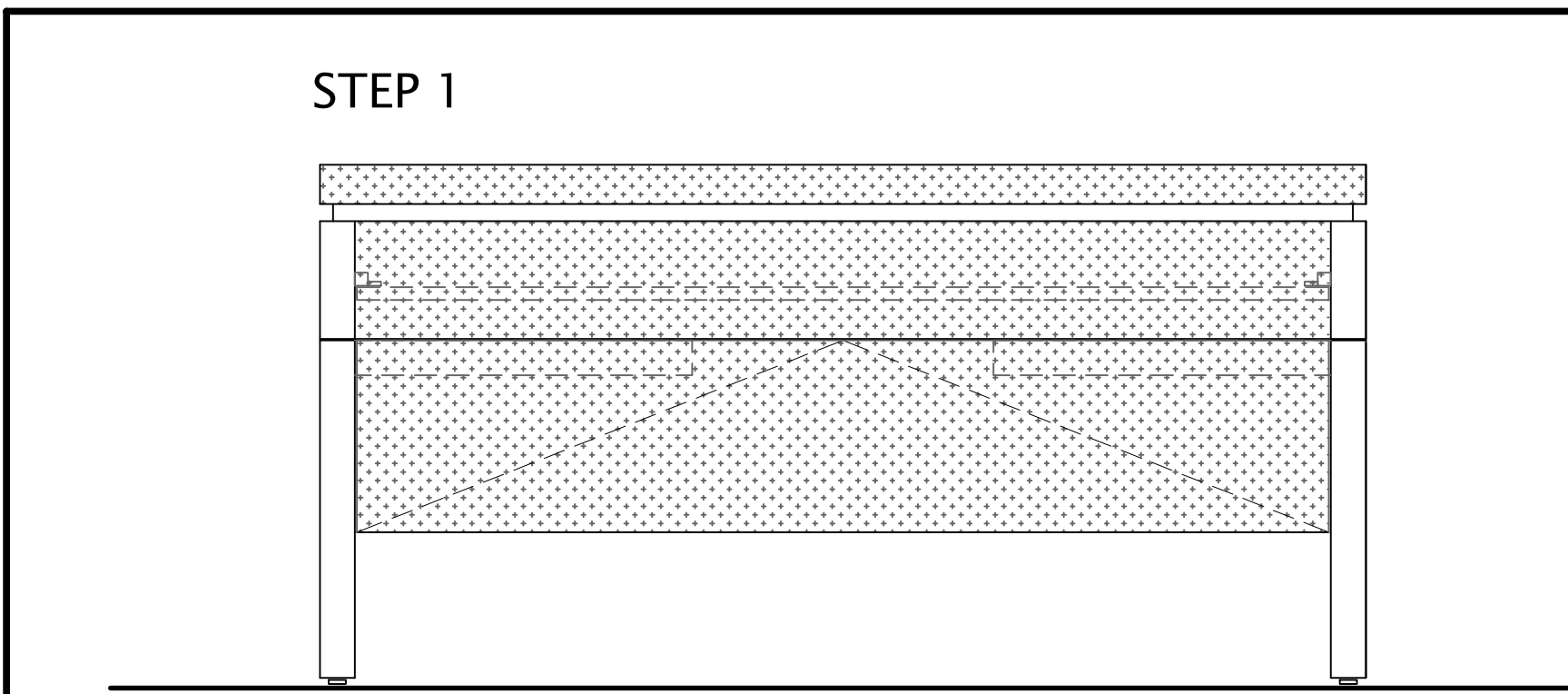
4 BACK ELEVATION
CR-1
SCALE 1:10



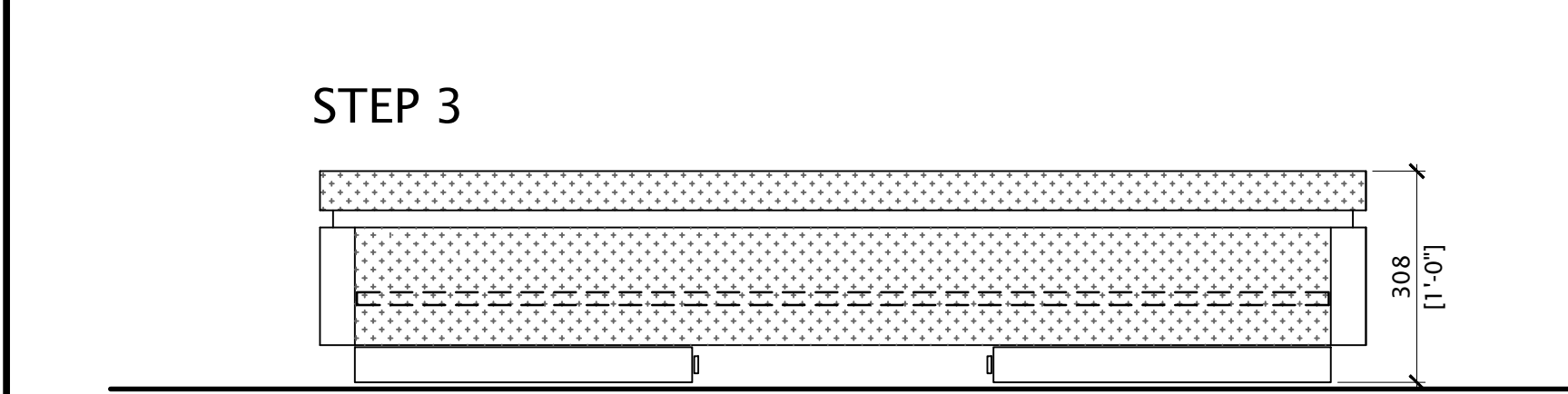
5 SIDE ELEVATION
CR-1
SCALE 1:10



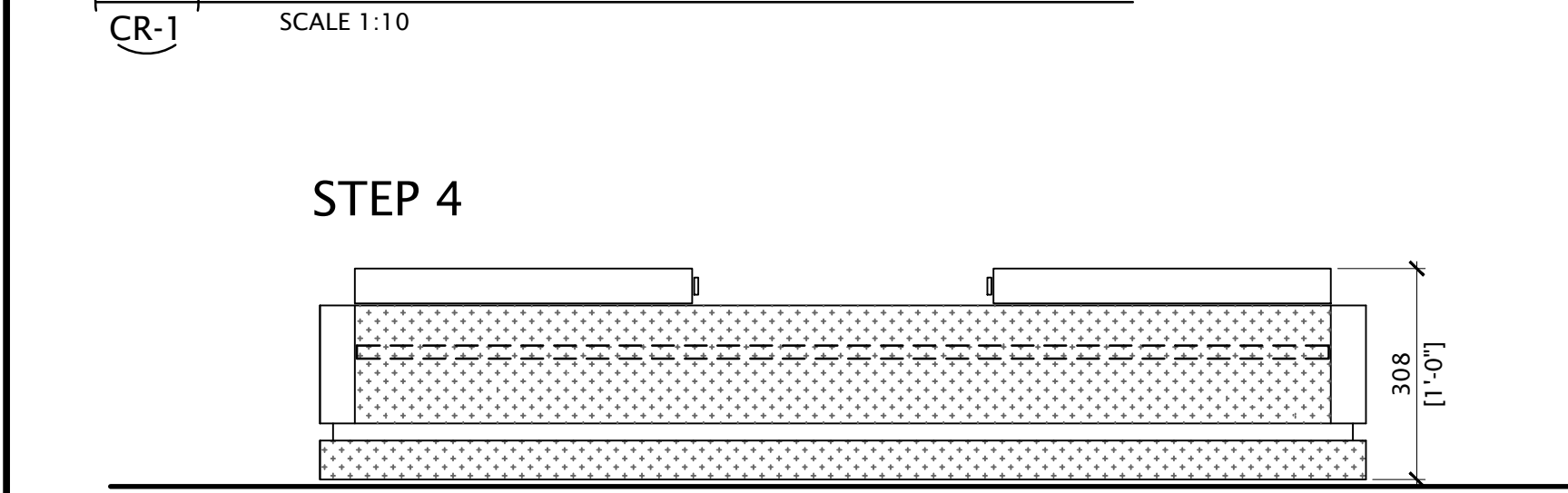
6 PLAN CROSS SECTION - MODESTY PANEL
CR-1
SCALE 1:10



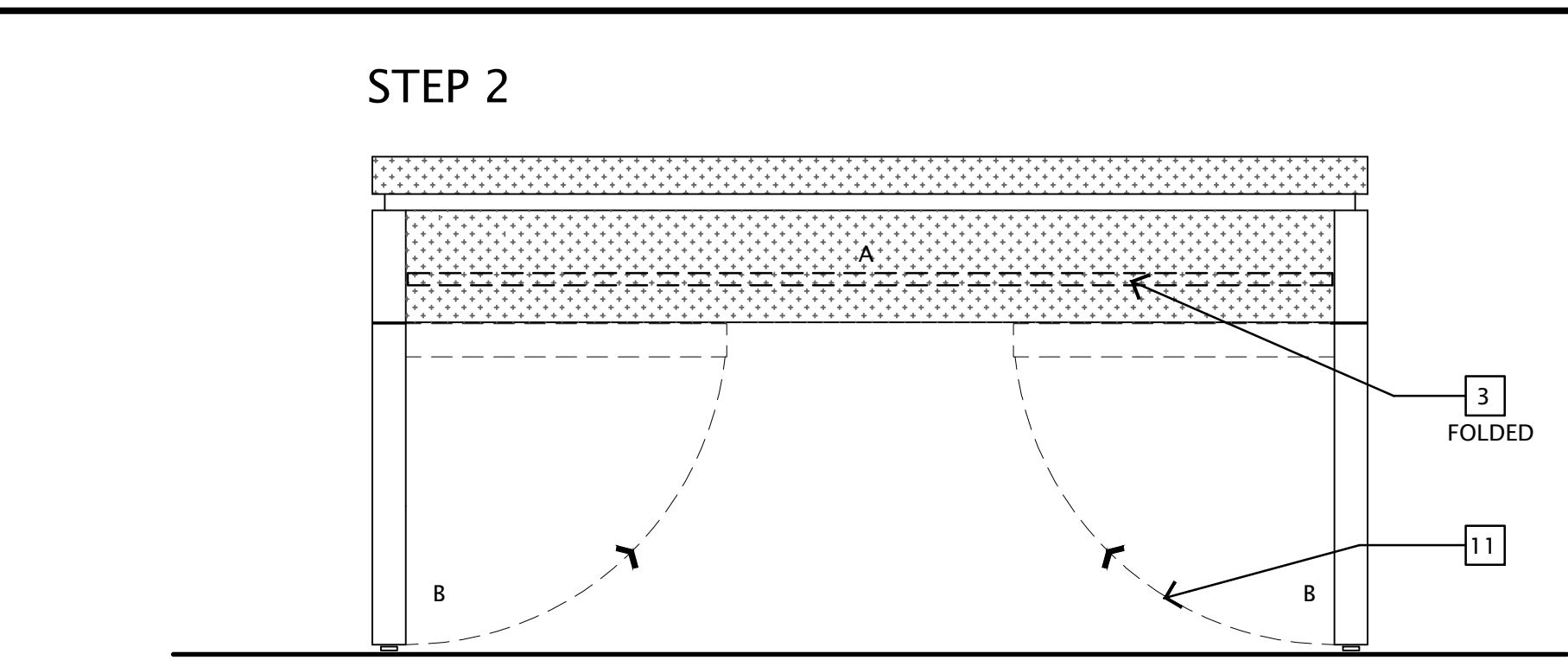
13 FRONT ELEVATION
CR-1
SCALE 1:10



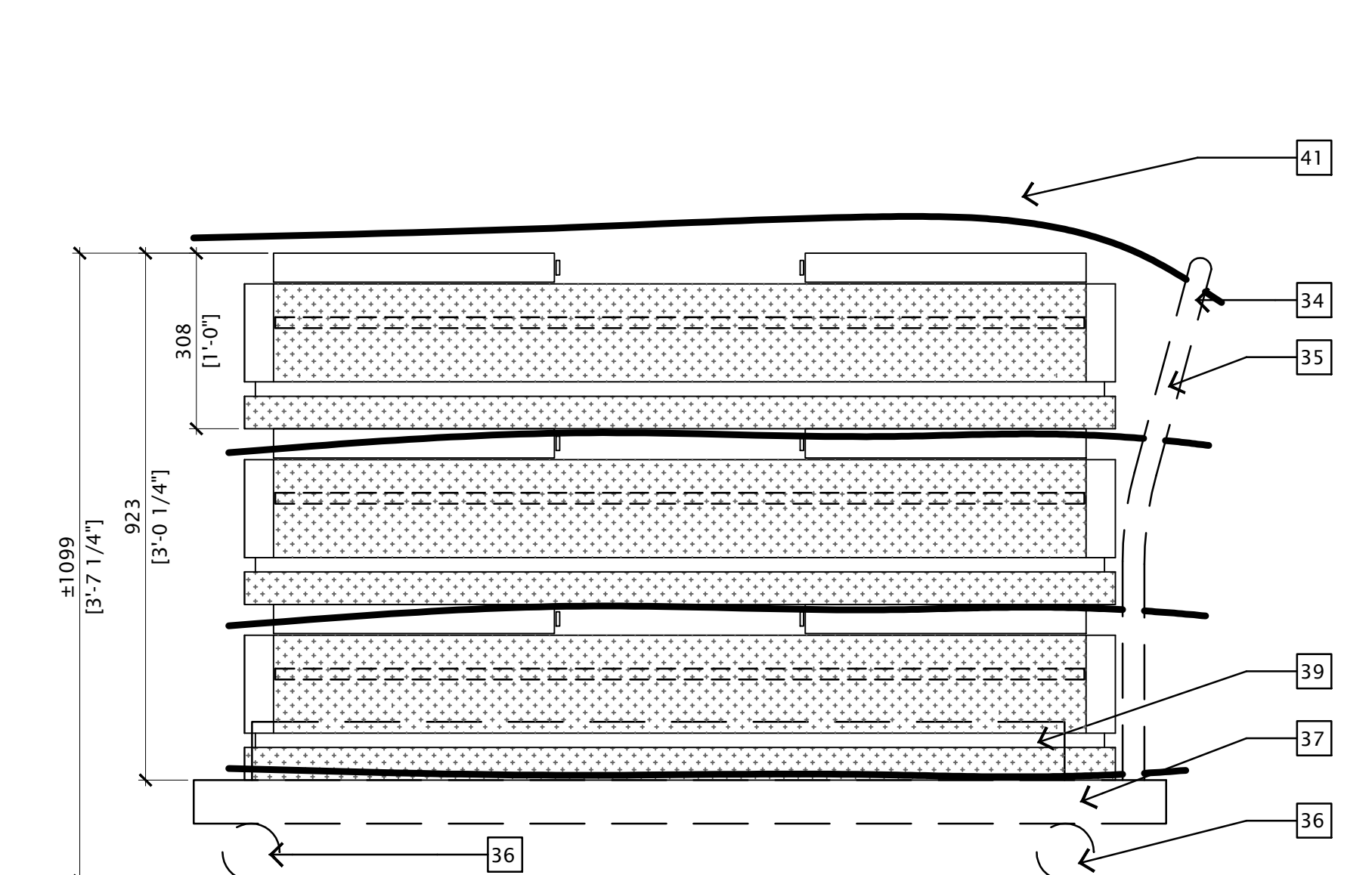
15 FRONT ELEVATION - FOLDED MODESTY PANEL & FOLDED GABLES
CR-1
SCALE 1:10



16 FRONT ELEVATION - FOLDED MODESTY PANEL & FOLDED GABLES (TABLE TOP DOWN)
CR-1
SCALE 1:10

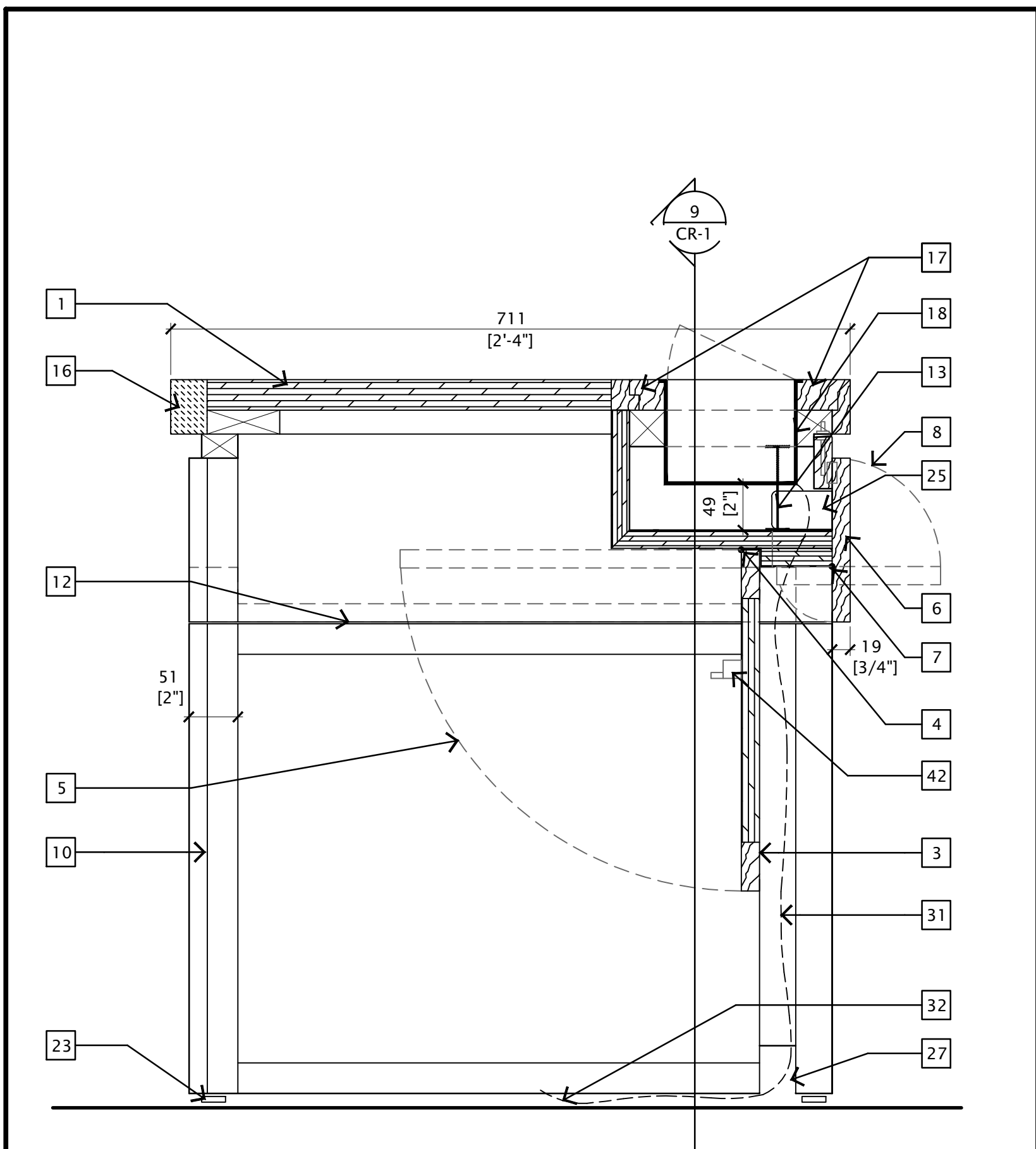


14 FRONT ELEVATION - FOLDED MODESTY PANEL
CR-1
SCALE 1:10

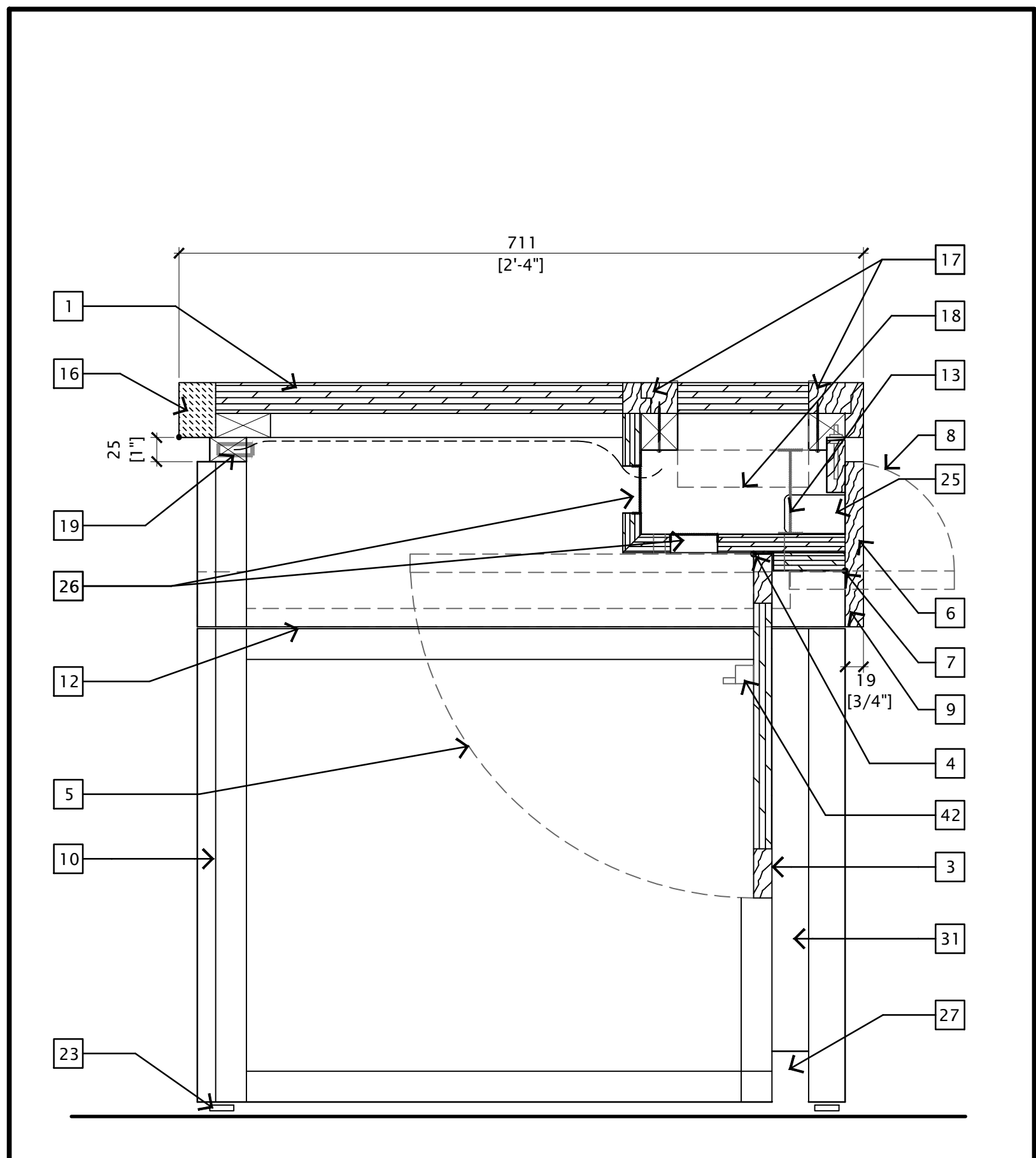


17 FRONT ELEVATION - MOVING CARTS
CR-1
SCALE 1:10

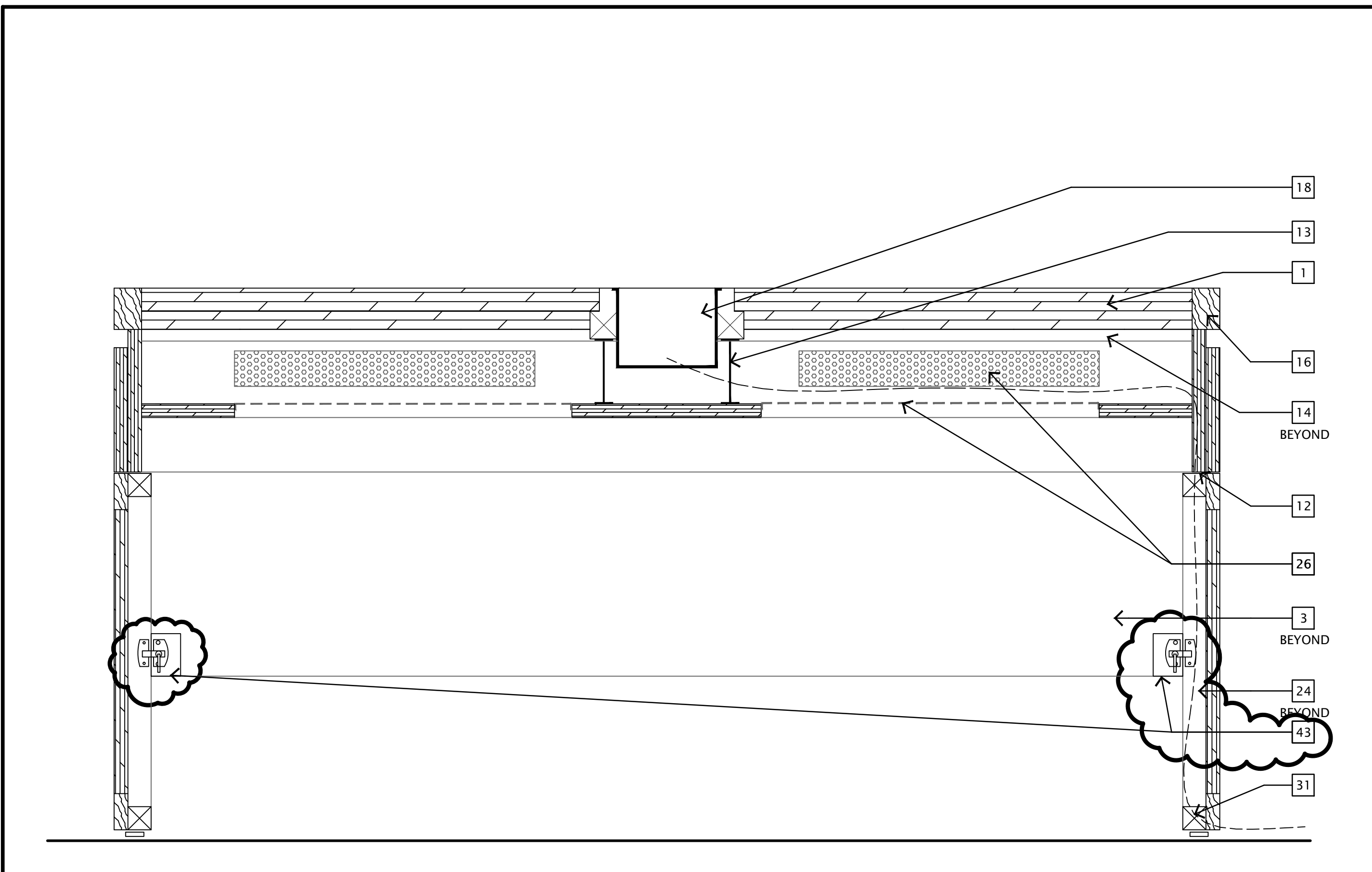
FOLDING PROCEDURE



7 SECTION - POWER COVE
CR-1
SCALE 1:5



8 SECTION - WIRE MANAGEMENT
CR-1
SCALE 1:5



9 SECTION
CR-1
SCALE 1:5

DRAWING NOTES

- 1 SURFACE WITH WOOD VENEER, PLYWOOD SUBSTRATE. TOTAL WEIGHT OF TABLE NOT TO EXCEED 110 LBS. VENEER TO FAN ON RADIIUS.
- 2 CONTRASTING VENEER OR STAIN FINISH ON PLYWOOD SUBSTRATE. TOTAL TABLE WEIGHT NOT TO EXCEED 110 LBS.
- 3 MODESTY PANEL WITH WOOD VENEER FINISH
- 4 HINGE POINT OF MODESTY PANEL
- 5 ARC OF MODESTY PANEL SWING
- 6 CABLE ACCESS DOOR WITH PRESSURE LATCH HARDWARE
- 7 HINGE POINT OF CABLE ACCESS DOOR
- 8 ARC OF ACCESS DOOR SWING
- 9 PROVIDE STAY AT ACCESS DOOR EXTREMITIES TO PREVENT DOOR FROM OPENING MORE THAN 90°
- 10 FOLDING TABLE LEG
- 11 ARC OF FOLDING TABLE LEG SWING
- 12 SEAM AT LEG HINGING POINT
- 13 STEEL BRACING TO PREVENT SAGGING
- 14 HARDWOOD FRAMING
- 15 LINE OF CABLE STRUCTURE BEYOND
- 16 SOLID SURFACE NOSING, EDGE DETAIL TBD
- 17 REMOVABLE PANEL WITH VENEER EDGING, NO HARDWARE
- 18 FLUSH MOUNT TABLE TOP TILT UP BOX (CONNECTIVITY)
- 19 EARPHONE JACK, HOUSING AND WIRING DETAILS TO BE DEVELOPED BY MANUFACTURER
- 20 MICROPHONE JACK WIRING ATTACHED TO UNDERSIDE OF TABLE TOP, CHANNELS TO BE PROVIDED
- 21 COORDINATE PH HOLES WITH MICROPHONE SYSTEM UNIT
- 22 FLUSH MOUNT MICROPHONE CROMMET, SUPPLIER TO PROVIDE SPECIFICATION FOR APPROVAL
- 23 HEAVY DUTY ADJUSTABLE METAL GLIDES
- 24 WIRE MANAGEMENT CHANNEL, SUPPLIER TO PROVIDE SPECIFICATION FOR APPROVAL
- 25 OPENING IN WIRE MANAGEMENT CHANNEL
- 26 PERFORATED METAL INSERTS IN WIRE MANAGEMENT TRAY
- 27 CONTINUOUS WIRE MANAGEMENT OPENING AT FLOOR
- 28 TYPICAL CONTINUOUS REVEAL
- 29 STRIKE PATH FOR HEAVY DUTY GYRO LOCK. LOCK. PROVIDE LONG SCREWS FOR HEAVY USE
- 30 CONTINUOUS HEAVY DUTY NYLON CAP TO SURROUND OUTSIDE EDGE OF PLYWOOD
- 31 DASH INDICATES CABLE PATH
- 32 MANUFACTURER TO PROVIDE DEVICE TO PROTECT WIRING "PIC TAILS" FROM DAMAGE WHEN STORING TABLE
- 33 PANELS SECURED WITH ROLLER CATCH OR TOE/KICK SPRING CATCH. SEE MANUFACTURER'S SPECIFICATIONS
- 34 RIGID HANDLE FOR MANUAL OPERATION OF CART
- 35 TYPICAL - ALL CORNERS ARE TO HAVE MITERED CORNERS
- 36 HEAVY DUTY WHEELS TO BE RUBBER AND HAVE LARGE BEARINGS TO WITHSTAND ELEVATORS AND ONLY USE 2 FRONT WHEELS NEAR HANDLES TO BE FIXED, 2 BACK WHEELS TO PILOT.
- 37 MOVING CARTS APPROPRIATE FOR TABLE SIZE AND DESIGN. CAPACITY TO STACK 3 TABLES HIGH MIN. REFER TO DETAIL 11/C&4 (SIZE DIFFERS)
- 38 BLOCKING UNDER TABLE TOP, INSERTS INTO ADJACENT TABLE
- 39 LIP REQUIRED ON ONE SIDE OF CART
- 40 LATCH. REFER TO CATCH SPECIFICATION
- 41 PROVIDE 4-12mm FELT PADS APPROX. 1700x800 WITH 2 HOLES FOR HANDLES (BETWEEN TABLES WHEN STACKED)
- 42 PROVIDE TURN LATCH AS SPECIFIED TO SECURE
- 43 SPRING DRAW CATCH FASTENED TO MODESTY PANEL AND FACE OF INSIDE LEG.

- ② SAMPLE REQUIRED

WRITTEN FURNITURE SPECIFICATIONS TO TAKE PRECEDENCE OVER DRAWING NOTES

revision	date
7	AMENDMENT 2014-08-14
6	ISSUED FOR RFP 2013-11-14

revision	date
A	A detail no. no. du détail
B	B location drawing no. no. de localisation
C	C drawing no. no. du dessin

project

WELLINGTON BUILDING
RENOVATION

180 WELLINGTON STREET
OTTAWA, ONTARIO

drawing

FOLDING TABLE (CR-1)
& CORNER TABLE TOP
(CR-3) PLAN'S, EL'S, SEC'T
& MOVING CART

Designed By	NORR Toronto	Conçu par	
Date	2010/03/01	(yyyy/mm/dd)	
Drawn By	NORR Toronto	Dessiné par	
Date	2010/10/01	(yyyy/mm/dd)	
Reviewed By	M. DELEAN	Examiné par	
Date	2011/03/21	(yyyy/mm/dd)	
Approved By	S. BALDASSARRA	Approuvé par	
Date	2011/03/21	(yyyy/mm/dd)	
Tender		Soumission	
Project Manager	T. MONTPEIT	Administrateur de projets	
Project no.		No. du projet	
Drawing no.	R.009790.059	No. du dessin	
	CR-1/ CR-3		