



Royal Canadian Mounted Police
Gendarmerie royale du Canada

Doc. no: G.S. 1045-358

Date: 2014-04-29

Specification

Jacket, Blue, All Ranks, Male and Female

This document has 35 pages including the drawings.

This document was created in English.

The document is available in English and French.

English/Anglais
Français/French

The photograph on this page is for reference only.



RCMP VIEWING SAMPLE

A viewing sample, when available, will be supplied to the successful tenderer.

This will be used for the guidance of the manufacturer in all factors not covered by this specification or referred to therein. Variation from the specification may appear in the sample in which case the specification shall govern.

It may be obtained from:

Royal Canadian Mounted Police
ATTN: Uniform and Equipment Program
(440 Coventry Road, Warehouse Building)
1200 Vanier Parkway
Ottawa, Ontario
K1A 0R2

It will be sent “prepaid” and is to be returned “prepaid”.

The viewing sample shall be returned to the RCMP in the same condition as received by the manufacturer. Lost or damaged viewing samples shall be replaced by an identical item or the RCMP shall be reimbursed for the cost of an acceptable replacement.

SPECIFICATION

JACKETS, BLUE, ALL RANKS, MALE & FEMALE

1. Definitions

- 1.1 This specification shall govern the manufacture and inspection of Jacket, Blue, All Ranks, Male & Female.
- 1.2 This specification, pattern, viewing sample, drawing or other information issued in connection therewith, may only be used for specific enquiries, tenders, or orders placed on behalf of the Royal Canadian Mounted Police.
- 1.3 This specification supersedes all previous specifications for Jacket, Blue, All Ranks, Male & Female.

2. Applicable Specifications

- 2.1 The following publications are applicable to this specification and to the issues in effect on the date of the invitation to tender, unless otherwise specified.
- 2.2 R.C.M.P. G.S.1045-258, Cloth, Wool, Fine, Serge 230 g/m².
- 2.3 CAN/CGSB-4.131-93, Thread, Polyester, Cotton Covered.
- 2.4 CAN/CGSB 4.2, Canadian Standard Textile Test Methods.
- 2.5 ISO 4915, International Standard for Textiles – “Stitch Types”.
- 2.6 ISO 4916:1991, International Standard for Textiles – “Seam Types”.
- 2.7 CAN/CGSB-86.1-2003 Standard for Care Labelling of Textiles.

3. **General Requirements**

- 3.1 The article or material covered by this specification shall be free from imperfections or blemishes such as may affect its appearance or serviceability. In all particulars not covered by this specification or contract documents, production shall be equivalent in all respects to the pattern and viewing sample.
- 3.2 **Design** - The jacket blue, all ranks for male and female shall be a single breasted, four button closure. There shall be two upper pleated patch-type breast pockets, and two lower patch type pockets; all with flaps, made from shell material. The jacket shall have a notch collar and lapels, with a Bi-swing back, with a single back vent, and a belt. The sleeves shall be two piece set-in. The jacket shall be fully lined body and sleeves. The female jacket shall be buttoned the same way as the male jacket, from left to right.
- 3.3 In the event of any inconsistency in contract documents, specification, pattern, drawing, or viewing sample, the aforementioned shall prevail in the following order:
- (i) Contract
 - (ii) Specification
 - (iii) Pattern
 - (iv) Drawings
 - (v) Viewing Sample

4. **Detail Requirements**

4.1 **Materials**

- 4.1.1 **Shell** - Shall be made of Cloth, Wool, Fine Serge, navy blue in colour, meeting the requirements of RCMP Specification G.S.1045-258.
It shall be purchased from the RCMP.
- 4.1.2 **Under Collar** - A good quality, commercially available under collar comparable in colour to shell material shall consist of one ply of bias cut canvas pad-stitched to felt.

4.1.3 **Lining**

4.1.3.1 **Body & Sleeves** - Shall be made of 100% Acetate and shall be $110 \text{ g/m}^2 \pm 8 \text{ g/m}^2$ and dark navy of comparable colour to the shell material as specified in Table I of this specification.

See Appendix B for required documentation.

4.1.3.2 **Pockets** - The pockets shall be lined with fabric equivalent or similar to the viewing sample.

4.1.4 **Interlining**

Fusibles - Care shall be taken to ensure that the fusible interlinings after application to the shell material shrink no more than the predicted shrinkage of the shell materials. All fusible interlinings shall have polyamide or a polyamide blend resin constructed in a dot pattern and sufficient in concentration for no delamination to occur after commercial dry cleaning. The fusing procedures shall be those recommended by the fusible interlining supplier. The fused products shall show no evidence of migration of colour or degradation of the shell material. All fusing operations shall be single fuse. Double fusing is unacceptable.

The fusible interlining shall be plain or twill weave, polyester viscose blend with a mass of $125 \text{ g/m}^2 \pm 8 \text{ g/m}^2$. It shall be black or grey in colour and meet all requirements outlined above.

4.1.5 **Chest Piece** - The fronts shall have a chest piece made of canvas interlining and one ply of light felt as per the viewing sample. The canvas and felt shall be dimensioned and zigzag stitched together. The chest piece shall be good quality and constructed using good commercial standards.

4.1.6 **Sleeve Head Pads** - The sleeve head pads shall be either canvas or scrim with a white wadding filler of good commercial standard and quality.

4.1.7 **Shoulder Pads** - The shoulder pads shall be of good quality, using white wadding as a filler.

- 4.1.8 **Buttons** - Two sizes of buttons shall be used for the male jackets and for the female jackets.

They are to be purchased from the R.C.M.P.

Male and Female Jackets:

- 19 mm, 8 ea. right front (both male and female) and pockets
- 17 mm, 6 ea. cuffs and shoulder straps

4.1.9 **Sewing Thread**

- 4.1.9.1 **Seams and Edges** - Shall be polyester wrap, polyester core, Tex 40, Class B of matching colour, meeting CAN/CGSB 4.131-93.

Certification of compliance must be provided.

- 4.1.9.2 **Buttonholes and Bar-Tacks** - The buttonhole and bar-tack thread shall be polyester wrap, polyester core, Tex 40, Class B of matching colour, meeting CAN/CGSB 4.131-93.

Certification of compliance must be provided.

- 4.1.9.3 **Buttons** - Shall be polyester wrap, polyester core, Tex 40, Class B of matching colour, meeting CAN/CGSB 4.131-93.

Certification of compliance must be provided.

- 4.1.10 **Belt Buckle** - **The belt buckle shall be purchased from the R.C.M.P.**

- 4.1.11 **Snap Fasteners** - The fasteners shall be black in colour, 7 mm diameter, and equal in all respects to the viewing sample.

- 4.2 **Size and Dimensions** - Jackets, male and female sizes to this specification shall be supplied in the sizes specified by the R.C.M.P. to the dimensions given in the scale of measurements attached and forming part of this specification. The garment components shall be shaped, dimensioned and positioned in accordance with the pattern requirements as outlined in Appendix "A" forming part of this specification.

4.3 **Construction**

- 4.3.1 **Stitching** - All stitching shall be lockstitch or lockchain stitch. There shall be no less than four and no more than five stitches per centimetre. The beginning and ending of all stitching shall be securely backstitched, unless secured by other

stitching. Collar felling shall have no less than 5 stitches per 2.5 cm. Felling of the hem and front facings shall have no less than 4 stitches per 2.5 cm. The stitches shall present a regular, even, appearance without fabric puckers and shall be free from skips or other stitching malfunctions that may result from faulty machine thread tension.

- 4.3.2 **Body** - The jacket, made of shell material specified in Para. 4.1.1, shall be fully lined with the materials specified in Para. 4.1.3. The jacket shall have a back seam, with a center back vent beginning at the natural waist line. There shall be 25 mm turn-up and 25 mm outlet on the side seams.
- 4.3.3 **Back** - The back shall have bi-swing pleats, 5.5 cm (± 0.5) deep at the top and tapering to 5 cm (± 0.5) at the waist. The outside edges shall be taped full length. Both the inside and outside edges shall be top stitched 6 mm gauge. The pleats shall be kept in place with a 25 mm wide strip of elastic of approved quality, sewn to the inside edges just above the side seams and a 4 cm wide stay along the waist, sewn into the side seams. The bottom of the pleats and the center seam shall be attached to this stay.
- 4.3.4 **Belt** - A 5 cm (± 0.5) wide detachable belt, with three sets of prong holes, shall be made of shell material as per viewing sample. The length of the belts shall correspond with the finished waist of the individual sizes when buckled at the center prong holes. The belt shall be supported on the jacket by two 65 mm long loops at the underarm dart, centered in line with the two lower front buttons and buttonholes. For proper placement see viewing sample and drawing.
- 4.3.5 **Sleeves** - The two piece set-in sleeves, of shell material, shall be fully lined with the material specified in Para. 4.1.3.1 and shall have sewn-on blunt pointed cuffs in accordance with the pattern, drawing #2 and the viewing sample. There shall be a 25 mm outlet on the underarm sleeve, from the elbow to the armpit.
- 4.3.6 **Collar** - Under collar stiffener of good quality, commercially available shall be bias cut. The top collar shall be one piece of shell material with both ends reinforced with fusible interlining. The collar construction may be open or sandwich type, ensuring that no canvas is exposed. The top collar shall be seamed to the gorge of the facing, the seam pressed open and tacked to the gorge of the garment. The neck edge of the felt under collar shall be felled to the back neckline either by hand or machine. The under collar shall not show when the collar is folded in place. Each side of the collar when finished shall be equipped

with two punch holes positioned using the template included in drawing #8 and the viewing sample.

- 4.3.7 **Shoulder Straps** - Shoulder straps shaped and dimensioned as per pattern and viewing sample shall be made from shell material and stiffened with the fusible specified in Para. 4.1.4. The shoulder straps shall be sewn into the sleeve head and positioned to cover the shoulder seam when the strap is buttoned. The free end of each strap shall have a buttonhole to fit a 17 mm R.C.M.P. button, which shall be positioned 10 mm from the top collar edge. The end of the strap shall be long enough to fit under the collar in accordance with the viewing sample.
- 4.3.8 **Pockets** - The jacket shall have two pleated patch-type breast pockets with flaps and two lower plain patch-type pockets with flaps, all of shell material, with buttonholes made to fit a 19 mm R.C.M.P. button. The outside points of the breast pocket flaps shall be secured to the pocket with the snap fasteners specified in Para. 4.1.11. Pockets and flaps shall be constructed, dimensioned and positioned in accordance with the patterns, drawings and viewing sample. Width and length shall be sized and dimensioned as per patterns and drawing #5. Position of upper pockets shall be as shown on the drawing #3. The top edge of the flaps of the lower front pockets shall be in line with the bottom button and buttonhole. There shall also be two inside breast pockets, constructed, dimensioned and positioned in accordance with the drawing and viewing sample. The corner of the inside breast pocket closest to the armhole shall be reinforced with lining or Silisia and stitched as per viewing sample. The lining specified in Para. 4.1.3.2 and as viewing sample, is to be used to line all outside pockets and as pocketing for the two inside pockets.
- 4.3.9 **Buttonholes and Buttons** - The left front of the jackets, both male and female, shall have four buttonholes, corresponding to the buttons specified for the right fronts, 19 mm male and female. The top and last buttonhole shall be placed as per pattern and drawings. The other two shall be placed evenly in-between as indicated on pattern and drawing #3. All flaps shall have buttonholes to fit a 19 mm button and the shoulder straps, buttonholes to fit a 17 mm button. Each sleeve shall be fitted with two 17 mm buttons, centered on the cuff 2.5 cm apart as per drawing #3. Each button shall be securely fastened with thread as specified in Para. 4.1.9.3. The crest shall be upright, except the shoulder strap button where the crown shall point towards the collar. The buttonholes shall be eyelet type, gimp reinforced and bar-tacked, with 8 to 11 stitches per centimeter.

- 4.3.10 **Coat Hanger** - A coat hanger of material in accordance with the viewing sample shall be centered at the back of the neck and attached by inserting in the collar seam.
- 4.3.11 **Finishing** - The lining at the armholes shall be hand felled or machine sewn. The bottom hem and facings of the jacket shall be felled or machine sewn.
- 4.3.12 **Pressing** - Each garment shall be properly pressed in accordance with good commercial practice to the satisfaction of the R.C.M.P.
- 4.3.13 **Marking & Cleaning Instructions Label** - Each Jacket shall have a durable label affixed to the inside lower right front facing, with the following information in English and French:

Jacket Blue, All Ranks, Male & Female / Vareuse bleue pour hommes et femmes de tous les grades
Dry clean only / Nettoyage à sec seulement
<i>Insert:</i> Date of Manufacture in numeric format year/month (Ex. 2001 / 11) / Date de fabrication en format numérique année/mois (p. ex. 2001/11)
<i>Insert:</i> Manufacturer's Identification / Identification du fabricant
<i>Insert:</i> Size (Ex. Male 40R or Female 38(12) R / Taille (p. ex. Homme 40R ou Femme 38 (12) R
<i>Insert:</i> RCMP Stock Number / Numéro d'article de la GRC

5. **Quality Assurance Provisions**

- 5.1 **Responsibility for Inspection** - Unless otherwise stipulated in the contract, it is the prime contractor's responsibility to satisfy the R.C.M.P., Uniform and Equipment Program that the material and services being supplied conform to this specification. This may be accomplished by performing the tests specified in this specification or by demonstrating to the satisfaction of the R.C.M.P., Uniform and Equipment Program that conformity to this specification of manufacturing processes is assured. The contractor may use his own facilities or any commercial testing establishment acceptable to the R.C.M.P., Uniform and Equipment Program.

- 5.2 The Royal Canadian Mounted Police, Uniform and Equipment Program reserves the right to perform any inspection considered necessary to ensure the material and services conform to the specified requirements. For the purpose of inspection, a portion of each delivery not exceeding two percent or two out of any number delivered under 100 may be put to tests that could destroy the articles. If found to be inferior or not in accordance with this specification, all articles so destroyed shall be replaced by others of proper quality and pattern at the expense of the contractor. The entire delivery may also be rejected if it is found that articles previously rejected due to non-repairable defects are redelivered for inspection.
- 5.3 The contractor will be promptly notified when any articles are not accepted and such articles will be returned at the contractor's risk and expense.

TABLE I - LINING

		SPECIFICATION	TESTED BY CAN/CGSB-4.2
1	Colour	Similar shade to shell material (no requirement to match exactly)	
2	Fibre Content	100% Acetate	
3	Weave	2/1 Twill "Z" Direction	
4	Mass	110 ± 8 g/m ² (102 - 118)	Method 5.1-M90
5	Width	140 cm (min.)	Method 4.1-M87
6	Yarns per 10cm	Warp 560 (min.) Weft 220 (min.)	Method 6-M89
7	Dimensional Change In Wetting	Warp 2% (max.) Weft 2% (max.)	Method 25.1-97
8	Dimensional Change In Dry Cleaning (3 cycles)	Warp 2% (max.) Weft 2% (max.)	Method 30-M90
9	Breaking Strength	Warp 350 Newtons (min.) Weft 150 Newtons (min.)	Method 9.1-M90
10	Tearing Strength	Warp 10 Newtons (min.) Weft 8 Newtons (min.)	Method 12.1-M90
11	Pilling	No less than Numerical Rating 4	Method 51.1-95
12	Colourfastness to Light	AATCC L3 or better	Method 18.3-97
13	Colourfastness to Crocking	Grey scale 4 (min.) Dry Grey scale 3 (min.) Wet	Method 22-2004
14	Colourfastness to Perspiration	Grey scale 4 (min.) Colour Change Grey scale 3 (min.) Staining on Acid & Alkaline	Method 23-M90
15	Colourfastness to Dry Cleaning	Grey scale 4 (min.) Colour Change Grey scale 4 (min.) Staining	Method 29.1-M89

A certificate of compliance is required when Monterey Textiles "Style# 1931", Shade # 6786 Navy is submitted for the requirement. Other manufacturers' fabrics shall be acceptable provided they meet or exceed the requirements and provide a test report for Table I excluding requirements 1, 3 and 5.

Appendix A
Sealed Pattern Identifier

Pattern #: G.S. 1045-358

Title: Jacket, Blue, All Ranks, Male & Female

Paper Patterns - Paper patterns are available from the R.C.M.P., Technical Authority, Ottawa Ontario, under Pattern # G.S.1045-358. Firms requested to produce Pre-contract Award Samples will be provided with the base pattern only. The full set of patterns (as well as electronic version if requested) either in individual sizes or as a graded nest will be provided to the successful bidder after the contract is awarded. The paper pattern will supersede over electronic pattern version.

The paper patterns include seam allowances, drill holes and/or placement templates. Contractors may make changes required to suit their production process, however, the design and grade shall not be affected or changed.

All patterns are property of the RCMP and must be returned upon completion of the contract.

MALE SIZES

Pattern Pieces - This design has 46 pattern components.

<u>Legend:</u>	
Cut 1 Single	= Cut 1
Cut 1 Paired	= Cut 2
Cut 2 Paired	= Cut 4
(RSU)	= Right Side Up
(GSU)	= Glue Side Up

Pattern Components	Nomenclature	Quantity to be cut	Material
# 1 of 46	Back	1 Paired	Shell Material
# 2 of 46	Side	1 Paired	Shell Material
# 3 of 46	Front Right	1 Single	Shell Material (RSU)
# 4 of 46	Front Left	1 Single	Shell Material (RSU)
# 5 of 46	Top Sleeve	1 Paired	Shell Material
# 6 of 46	Under Sleeve	1 Paired	Shell Material
# 7 of 46	Cuff	1 Paired	Shell Material
# 8 (a) of 46	Pocket – Upper Front Pleated (Short Sizes 34 – 36)	1 Paired	Shell Material
# 8 (b) of 46	Pocket – Upper Front Pleated (Short Sizes 38 – 42)	1 Paired	Shell Material
# 8 (c) of 46	Pocket – Upper Front Pleated (Short Sizes 44 – 52)	1 Paired	Shell Material

# 8 (d) of 46	Pocket – Upper Front Pleated (Regular Sizes 34 – 36)	1 Paired	Shell Material
# 8 (e) of 46	Pocket – Upper Front Pleated (Regular Sizes 38 – 42)	1 Paired	Shell Material
# 8 (f) of 46	Pocket – Upper Front Pleated (Regular Sizes 44 – 52)	1 Paired	Shell Material
# 8 (g) of 46	Pocket – Upper Front Pleated (Tall Sizes 34 – 36)	1 Paired	Shell Material
# 8 (h) of 46	Pocket – Upper Front Pleated (Tall Sizes 38 – 42)	1 Paired	Shell Material
# 8 (i) of 46	Pocket – Upper Front Pleated (Tall Sizes 44 – 52)	1 Paired	Shell Material
# 9 (a) of 46	Pocket Flap – Upper Front (Sizes 34 – 36)	2 Paired	Shell Material
# 9 (b) of 46	Pocket Flap – Upper Front (Sizes 38 – 42)	2 Paired	Shell Material
# 9 (c) of 46	Pocket Flap – Upper Front (Sizes 44 – 52)	2 Paired	Shell Material
# 10 (a) of 46	Pocket – Lower Front (Short Sizes 34 – 36)	1 Paired	Shell Material
# 10 (b) of 46	Pocket – Lower Front (Short Sizes 38 – 42)	1 Paired	Shell Material
# 10 (c) of 46	Pocket – Lower Front (Short Sizes 44 – 52)	1 Paired	Shell Material
# 10 (d) of 46	Pocket – Lower Front (Regular Sizes 34 – 36)	1 Paired	Shell Material
# 10 (e) of 46	Pocket – Lower Front (Regular Sizes 38 – 42)	1 Paired	Shell Material
# 10 (f) of 46	Pocket – Lower Front (Regular Sizes 44 – 52)	1 Paired	Shell Material
# 10 (g) of 46	Pocket – Lower Front (Tall Sizes 34 – 36)	1 Paired	Shell Material
# 10 (h) of 46	Pocket – Lower Front (Tall Sizes 38 – 42)	1 Paired	Shell Material
# 10 (i) of 46	Pocket – Lower Front (Tall Sizes 44 – 52)	1 Paired	Shell Material
# 11 (a) of 46	Pocket Flap – Lower Front (Sizes 34 – 36)	2 Paired	Shell Material
# 11 (b) of 46	Pocket Flap – Lower Front (Sizes 38 – 42)	2 Paired	Shell Material
# 11 (c) of 46	Pocket Flap – Lower Front (Sizes 44 – 52)	2 Paired	Shell Material
# 12 of 46	Top Collar	1 Single	Shell Material
# 13 of 46	Under Collar	1 Single	Felt
# 14 of 46	Facing – Front Right	1 Single	Shell Material (RSU)

# 15 of 46	Facing – Front Left	1 Single	Shell Material (RSU)
# 16 of 46	Belt	1 Single	Shell Material (RSU)
# 17 of 46	Belt Loops	1 Single	Shell Material
# 18 of 46	Shoulder Strap	2 Paired	Shell Material
# 19 of 46	Lining – Right Back	1 Single	Lining (RSU)
# 20 of 46	Lining – Left Back	1 Single	Lining (RSU)
# 21 of 46	Lining – Side	1 Paired	Lining
# 22 of 46	Lining – Front	1 Paired	Lining
# 23 of 46	Lining – Top Sleeve	1 Paired	Lining
# 24 of 46	Lining – Under Sleeve	1 Paired	Lining
# 25 of 46	Lining – Inside Breast Pocket	1 Paired	Lining
# 26 of 46	Lining – Welt Pocket	2 Paired	Lining
# 27 of 46	Fusible – Lower Back	1 Paired	Fusible
# 28 of 46	Fusible – Right Front	1 Single	Fusible (GSU)
# 29 of 46	Fusible – Left Front	1 Single	Fusible (GSU)
# 30 of 46	Fusible – Side	1 Paired	Fusible
# 31 of 46	Fusible – Cuff	1 Paired	Fusible
# 32 (a) of 46	Fusible – Upper Front Pocket (Short Sizes 34 – 36)	1 Paired	Fusible
# 32 (b) of 46	Fusible – Upper Front Pocket (Short Sizes 38 – 42)	1 Paired	Fusible
# 32 (c) of 46	Fusible – Upper Front Pocket (Short Sizes 44 – 52)	1 Paired	Fusible
# 32 (d) of 46	Fusible – Upper Front Pocket (Regular Sizes 34 – 36)	1 Paired	Fusible
# 32 (e) of 46	Fusible – Upper Front Pocket (Regular Sizes 38 – 42)	1 Paired	Fusible
# 32 (f) of 46	Fusible – Upper Front Pocket (Regular Sizes 44 – 52)	1 Paired	Fusible
# 32 (g) of 46	Fusible – Upper Front Pocket (Tall Sizes 34 – 36)	1 Paired	Fusible
# 32 (h) of 46	Fusible – Upper Front Pocket (Tall Sizes 38 – 42)	1 Paired	Fusible
# 32 (i) of 46	Fusible – Upper Front Pocket (Tall Sizes 44 – 52)	1 Paired	Fusible
# 33 (a) of 46	Fusible – Upper Front Flap (Sizes 34 – 36)	1 Paired	Fusible
# 33 (b) of 46	Fusible – Upper Front Flap (Sizes 38 – 42)	1 Paired	Fusible
# 33 (c) of 46	Fusible – Upper Front Flap (Sizes 44 – 52)	1 Paired	Fusible
# 34 (a) of 46	Fusible – Lower Front Pocket (Short Sizes 34 – 36)	1 Paired	Fusible

# 34 (b) of 46	Fusible – Lower Front Pocket (Short Sizes 38 – 42)	1 Paired	Fusible
# 34 (c) of 46	Fusible – Lower Front Pocket (Short Sizes 44 – 52)	1 Paired	Fusible
# 34 (d) of 46	Fusible – Lower Front Pocket (Regular Sizes 34 – 36)	1 Paired	Fusible
# 34 (e) of 46	Fusible – Lower Front Pocket (Regular Sizes 38 – 42)	1 Paired	Fusible
# 34 (f) of 46	Fusible – Lower Front Pocket (Regular Sizes 44 – 52)	1 Paired	Fusible
# 34 (g) of 46	Fusible – Lower Front Pocket (Tall Sizes 34 – 36)	1 Paired	Fusible
# 34 (h) of 46	Fusible – Lower Front Pocket (Tall Sizes 38 – 42)	1 Paired	Fusible
# 34 (i) of 46	Fusible – Lower Front Pocket (Tall Sizes 44 – 52)	1 Paired	Fusible
# 35 (a) of 46	Fusible – Lower Front Flap (Sizes 34 – 36)	1 Paired	Fusible
# 35 (b) of 46	Fusible – Lower Front Flap (Sizes 38 – 42)	1 Paired	Fusible
# 35 (c) of 46	Fusible – Lower Front Flap (Sizes 44 – 52)	1 Paired	Fusible
# 36 of 46	Fusible – Front Right Facing	1 Single	Fusible (GSU)
# 37 of 46	Fusible – Front Left Facing	1 Single	Fusible (GSU)
# 38 of 46	Fusible – Belt	1 Single	Fusible (GSU)
# 39 of 46	Fusible – Shoulder Strap	1 Paired	Fusible
# 40 of 46	Fusible – Top Collar	1 Paired	Fusible
# 41 of 46	Fusible – Bi-swing	1 Paired	Fusible
# 42 of 46	Pellon – Welt Pocket	1 Paired	Pellon
# 43 of 46	Silisia – Front Dart	1 Paired	Silisia
# 44 (a) of 46	Silisia – Upper Front Pocket (Short Sizes 34 – 36)	1 Paired	Silisia
# 44 (b) of 46	Silisia – Upper Front Pocket (Short Sizes 38 – 42)	1 Paired	Silisia
# 44 (c) of 46	Silisia – Upper Front Pocket (Short Sizes 44 – 52)	1 Paired	Silisia
# 44 (d) of 46	Silisia – Upper Front Pocket (Regular Sizes 34 – 36)	1 Paired	Silisia
# 44 (e) of 46	Silisia – Upper Front Pocket (Regular Sizes 38 – 42)	1 Paired	Silisia
# 44 (f) of 46	Silisia – Upper Front Pocket (Regular Sizes 44 – 52)	1 Paired	Silisia
# 44 (g) of 46	Silisia – Upper Front Pocket (Tall Sizes 34 – 36)	1 Paired	Silisia

# 44 (h) of 46	Silisia – Upper Front Pocket (Tall Sizes 38 – 42)	1 Paired	Silisia
# 44 (i) of 46	Silisia – Upper Front Pocket (Tall Sizes 44 – 52)	1 Paired	Silisia
# 45 (a) of 46	Silisia – Lower Front Pocket (Short Sizes 34 – 36)	1 Paired	Silisia
# 45 (b) of 46	Silisia – Lower Front Pocket (Short Sizes 38 – 42)	1 Paired	Silisia
# 45 (c) of 46	Silisia – Lower Front Pocket (Short Sizes 44 – 52)	1 Paired	Silisia
# 45 (d) of 46	Silisia – Lower Front Pocket (Regular Sizes 34 – 36)	1 Paired	Silisia
# 45 (e) of 46	Silisia – Lower Front Pocket (Regular Sizes 38 – 42)	1 Paired	Silisia
# 45 (f) of 46	Silisia – Lower Front Pocket (Regular Sizes 44 – 52)	1 Paired	Silisia
# 45 (g) of 46	Silisia – Lower Front Pocket (Tall Sizes 34 – 36)	1 Paired	Silisia
# 45 (h) of 46	Silisia – Lower Front Pocket (Tall Sizes 38 – 42)	1 Paired	Silisia
# 45 (i) of 46	Silisia – Lower Front Pocket (Tall Sizes 44 – 52)	1 Paired	Silisia
# 46 of 46	Silisia – Inside Breast Pocket	1 Paired	Silisia

FEMALE SIZES

Pattern Pieces - This design has 47 pattern components.

<u>Legend:</u>	
Cut 1 Single	= Cut 1
Cut 1 Paired	= Cut 2
Cut 2 Paired	= Cut 4
(RSU)	= Right Side Up
(GSU)	= Glue Side Up

Pattern Components	Nomenclature	Quantity to be cut	Material
# 1 of 47	Back	1 Paired	Shell Material
# 2 of 47	Side	1 Paired	Shell Material
# 3 of 47	Front Right	1 Single	Shell Material (RSU)
# 4 of 47	Front Left	1 Single	Shell Material (RSU)
# 5 of 47	Front - Side	1 Paired	Shell Material
# 6 of 47	Top Sleeve	1 Paired	Shell Material

# 7 of 47	Under Sleeve	1 Paired	Shell Material
# 8 of 47	Cuff	1 Paired	Shell Material
# 9 (a) of 47	Pocket – Upper Front Pleated (Short Sizes 32 (6) – 36 (10))	1 Paired	Shell Material
# 9 (b) of 47	Pocket – Upper Front Pleated (Short Sizes 38 (12) – 42 (16))	1 Paired	Shell Material
# 9 (c) of 47	Pocket – Upper Front Pleated (Short Sizes 44 (18) – 48 (22))	1 Paired	Shell Material
# 9 (d) of 47	Pocket – Upper Front Pleated (Regular 32 (6) – 36 (10))	1 Paired	Shell Material
# 9 (e) of 47	Pocket – Upper Front Pleated (Regular 38 (12) – 42 (16))	1 Paired	Shell Material
# 9 (f) of 47	Pocket – Upper Front Pleated (Regular 44 (18) – 48 (22))	1 Paired	Shell Material
# 9 (g) of 47	Pocket – Upper Front Pleated (Tall Sizes 32 (6) – 36 (10))	1 Paired	Shell Material
# 9 (h) of 47	Pocket – Upper Front Pleated (Tall Sizes 38 (12) – 42 (16))	1 Paired	Shell Material
# 9 (i) of 47	Pocket – Upper Front Pleated (Tall Sizes 44 (18) – 48 (22))	1 Paired	Shell Material
# 10 (a) of 47	Pocket Flap – Upper Front (Sizes 32 (6) – 36 (10))	2 Paired	Shell Material
# 10 (b) of 47	Pocket Flap – Upper Front (Sizes 38 (12) – 42 (16))	2 Paired	Shell Material
# 10 (c) of 47	Pocket Flap – Upper Front (Sizes 44 (18) – 48 (22))	2 Paired	Shell Material
# 11 (a) of 47	Pocket – Lower Front (Short Sizes 32 (6) – 36 (10))	1 Paired	Shell Material
# 11 (b) of 47	Pocket – Lower Front (Short Sizes 38 (12) – 42 (16))	1 Paired	Shell Material
# 11 (c) of 47	Pocket – Lower Front (Short Sizes 44 (18) – 48 (22))	1 Paired	Shell Material
# 11 (d) of 47	Pocket – Lower Front (Regular Sizes 32 (6) – 36 (10))	1 Paired	Shell Material
# 11 (e) of 47	Pocket – Lower Front (Regular Sizes 38 (12) – 42 (16))	1 Paired	Shell Material
# 11 (f) of 47	Pocket – Lower Front (Regular Sizes 44 (18) – 48 (22))	1 Paired	Shell Material
# 11 (g) of 47	Pocket – Lower Front (Tall Sizes 32 (6) – 36 (10))	1 Paired	Shell Material
# 11 (h) of 47	Pocket – Lower Front (Tall Sizes 38 (12) – 42 (16))	1 Paired	Shell Material
# 11 (i) of 47	Pocket – Lower Front (Tall Sizes 44 (18) – 48 (22))	1 Paired	Shell Material

# 12 (a) of 47	Pocket Flap – Lower Front (Sizes 32 (6) – 36 (10))	2 Paired	Shell Material
# 12 (b) of 47	Pocket Flap – Lower Front (Sizes 38 (12) – 42 (16))	2 Paired	Shell Material
# 12 (c) of 47	Pocket Flap – Lower Front (Sizes 44 (18) – 48 (22))	2 Paired	Shell Material
# 13 of 47	Top Collar	1 Single	Shell Material (RSU)
# 14 of 47	Under Collar	1 Single	Felt
# 15 of 47	Facing – Front Right	1 Single	Shell Material (RSU)
# 16 of 47	Facing – Front Left	1 Single	Shell Material (RSU)
# 17 of 47	Belt	1 Single	Shell Material (RSU)
# 18 of 47	Belt Loops	1 Single	Shell Material
# 19 of 47	Shoulder Strap	2 Paired	Shell Material
# 20 of 47	Lining – Right Back	1 Single	Lining (RSU)
# 21 of 47	Lining – Left Back	1 Single	Lining (RSU)
# 22 of 47	Lining – Side	1 Paired	Lining
# 23 of 47	Lining – Front	1 Paired	Lining
# 24 of 47	Lining – Top Sleeve	1 Paired	Lining
# 25 of 47	Lining – Under Sleeve	1 Paired	Lining
# 26 of 47	Lining – Inside Breast Pocket	1 Paired	Lining
# 27 of 47	Lining – Welt Pocket	2 Paired	Lining
# 28 of 47	Fusible – Lower Back	1 Paired	Fusible
# 29 of 47	Fusible – Right Front	1 Single	Fusible (GSU)
# 30 of 47	Fusible – Left Front	1 Single	Fusible (GSU)
# 31 of 47	Fusible – Front - Side	1 Paired	Fusible
# 32 of 47	Fusible – Side	1 Paired	Fusible
# 33 of 47	Fusible – Cuff	1 Paired	Fusible
# 34 (a) of 47	Fusible – Upper Front Pocket (Short Sizes 32 (6) – 36 (10))	1 Paired	Fusible
# 34 (b) of 47	Fusible – Upper Front Pocket (Short Sizes 38 (12) – 42 (16))	1 Paired	Fusible
# 34 (c) of 47	Fusible – Upper Front Pocket (Short Sizes 44 (18) – 48 (22))	1 Paired	Fusible
# 34 (d) of 47	Fusible – Upper Front Pocket (Regular Sizes 32 (6) – 36 (10))	1 Paired	Fusible
# 34 (e) of 47	Fusible – Upper Front Pocket (Regular 38 (12) – 42 (16))	1 Paired	Fusible
# 34 (f) of 47	Fusible – Upper Front Pocket (Regular Sizes 44 (18) – 48 (22))	1 Paired	Fusible
# 34 (g) of 47	Fusible – Upper Front Pocket (Tall Sizes 32 (6) – 36 (10))	1 Paired	Fusible
# 34 (h) of 47	Fusible – Upper Front Pocket (Tall Sizes 38 (12) – 42 (16))	1 Paired	Fusible

# 34 (i) of 47	Fusible – Upper Front Pocket (Tall Sizes 44 (18) – 48 (22))	1 Paired	Fusible
# 35 (a) of 47	Fusible – Upper Front Flap (Sizes 32 (6) – 36 (10))	1 Paired	Fusible
# 35 (b) of 47	Fusible – Upper Front Flap (Sizes 38 (12) – 42 (16))	1 Paired	Fusible
# 35 (c) of 47	Fusible – Upper Front Flap (Sizes 44 (18) – 48 (22))	1 Paired	Fusible
# 36 (a) of 47	Fusible – Lower Front Pocket (Short Sizes 32 (6) – 36 (10))	1 Paired	Fusible
# 36 (b) of 47	Fusible – Lower Front Pocket (Short Sizes 38 (12) – 42 (16))	1 Paired	Fusible
# 36 (c) of 47	Fusible – Lower Front Pocket (Short Sizes 44 (18) – 48 (22))	1 Paired	Fusible
# 36 (d) of 47	Fusible – Lower Front Pocket (Regular Sizes 32 (6) – 36 (10))	1 Paired	Fusible
# 36 (e) of 47	Fusible – Lower Front Pocket (Regular Sizes 38 (12) – 42 (16))	1 Paired	Fusible
# 36 (f) of 47	Fusible – Lower Front Pocket (Regular Sizes 44 (18) – 48 (22))	1 Paired	Fusible
# 36 (g) of 47	Fusible – Lower Front Pocket (Tall Sizes 32 (6) – 36 (10))	1 Paired	Fusible
# 36 (h) of 47	Fusible – Lower Front Pocket (Tall Sizes 38 (12) – 42 (16))	1 Paired	Fusible
# 36 (i) of 47	Fusible – Lower Front Pocket (Tall Sizes 44 (18) – 48 (22))	1 Paired	Fusible
# 37 (a) of 47	Fusible – Lower Front Flap (Sizes 32 (6) – 36 (10))	1 Paired	Fusible
# 37 (b) of 47	Fusible – Lower Front Flap (Sizes 38 (12) – 42 (16))	1 Paired	Fusible
# 37 (c) of 47	Fusible – Lower Front Flap (Sizes 44 (18) – 48 (22))	1 Paired	Fusible
# 38 of 47	Fusible – Front Right Facing	1 Single	Fusible (GSU)
# 39 of 47	Fusible – Front Left Facing	1 Single	Fusible (GSU)
# 40 of 47	Fusible – Belt	1 Single	Fusible (GSU)
# 41 of 47	Fusible – Shoulder Strap	1 Paired	Fusible
# 42 of 47	Fusible – Top Collar	1 Paired	Fusible
# 43 of 47	Fusible – Bi-swing	1 Paired	Fusible
# 44 of 47	Pellon – Welt Pocket	1 Paired	Pellon
# 45 (a) of 47	Silisia – Upper Front Pocket (Short Sizes 32 (6) – 36 (10))	1 Paired	Silisia
# 45 (b) of 47	Silisia – Upper Front Pocket (Short Sizes 38 (12) – 42 (16))	1 Paired	Silisia

# 45 (c) of 47	Silisia – Upper Front Pocket (Short Sizes 44 (18) – 48 (22))	1 Paired	Silisia
# 45 (d) of 47	Silisia – Upper Front Pocket (Regular Sizes 32 (6) – 36 (10))	1 Paired	Silisia
# 45 (e) of 47	Silisia – Upper Front Pocket (Regular Sizes 38 (12) – 42 (16))	1 Paired	Silisia
# 45 (f) of 47	Silisia – Upper Front Pocket (Regular Sizes 44 (18) – 48 (22))	1 Paired	Silisia
# 45 (g) of 47	Silisia – Upper Front Pocket (Tall Sizes 32 (6) – 36 (10))	1 Paired	Silisia
# 45 (h) of 47	Silisia – Upper Front Pocket (Tall Sizes 38 (12) – 42 (16))	1 Paired	Silisia
# 45 (i) of 47	Silisia – Upper Front Pocket (Tall Sizes 44 (18) – 48 (22))	1 Paired	Silisia
# 46 (a) of 47	Silisia – Lower Front Pocket (Short Sizes 32 (6) – 36 (10))	1 Paired	Silisia
# 46 (b) of 47	Silisia – Lower Front Pocket (Short Sizes 38 (12) – 42 (16))	1 Paired	Silisia
# 46 (c) of 47	Silisia – Lower Front Pocket (Short Sizes 44 (18) – 48 (22))	1 Paired	Silisia
# 46 (d) of 47	Silisia – Lower Front Pocket (Regular Sizes 32 (6) – 36 (10))	1 Paired	Silisia
# 46 (e) of 47	Silisia – Lower Front Pocket (Regular Sizes 38 (12) – 42 (16))	1 Paired	Silisia
# 46 (f) of 47	Silisia – Lower Front Pocket (Regular Sizes 44 (18) – 48 (22))	1 Paired	Silisia
# 46 (g) of 47	Silisia – Lower Front Pocket (Tall Sizes 32 (6) – 36 (10))	1 Paired	Silisia
# 46 (h) of 47	Silisia – Lower Front Pocket (Tall Sizes 38 (12) – 42 (16))	1 Paired	Silisia
# 46 (i) of 47	Silisia – Lower Front Pocket (Tall Sizes 44 (18) – 48 (22))	1 Paired	Silisia
# 47 of 47	Silisia – Inside Breast Pocket	1 Paired	Silisia

Appendix B
Certification & Evaluation Criteria

Appendix B contains the definitions for certificate of compliance and test reports that are required for this specification. The tables of requirements shall be used by the manufacturer and RCMP Uniform and Equipment Program to ensure proper documentation is received and meets the requirements outlined in this specification.

Certification of compliance: A Certificate of Compliance is defined, for this document, as a signed and dated certification to confirm that a specified component (e.g. slide fastener, hook and loop, webbing, thread etc) or requirement adheres to the specification. The certification must be prepared, signed and dated by an official representative of the component manufacturer using company letterhead making reference to the specification number and paragraph number. It must specifically address the component or requirement and compliance can be shown by referring to a part number, by providing the component values, by providing a manufacturing data sheet to show technical compliance or by a description stating compliance to the requirement. In-house testing is acceptable to show compliance. Copying the specification word for word is not acceptable.

A separate certificate of compliance is required for each individual component or requirement. Multiple components supplied by the same component manufacturer may be submitted on one certificate of compliance as long as the paragraph numbers and components are clearly identified. With this document, the bidder certifies that the product for which the certificate of compliance is issued is the same product used in the bid submission, or in the pre-award samples or in the pre-production samples, or in the production units as applicable.

The Bidder is to note that copies of invoices, purchase orders, packing slips and certificates of compliance for products or components that are not manufactured by the certifier are not suitable for use as a certificate of compliance.

Test Report: Test report documents signed and dated by an independent, third-party accredited laboratory acceptable to the RCMP shall include the test method, test conditions and test results performed to verify requirements as specified in this specification.

Certification & Evaluation Criteria

Specification Paragraph	Component	Certification of Compliance	Test Report	Pass/Fail
4.1.3.1	Lining, Body & sleeves	Required	*Required if applicable	
4.1.9.1	Thread for Seams	Required		
4.1.9.2	Thread for Buttonholes	Required		
4.1.9.3	Thread for Buttons	Required		

Note: *“Required if applicable” refers to testing required to verify compliance when alternate product is used.

Component Samples Required

The contractor shall submit to RCMP Technical Authority a sample of all components listed below. In the case of the fusible interlining, a sample shall be provided together with a sample of the interlining fused to the shell material. The samples shall be not less than 60 cm by 60 cm.

Specification Paragraph	Component	Requirement	Sample Received (Yes/No)	Sample Provided Acceptable (Yes/No)
4.1.4	Fusible Interlining	Samples both alone and fused to shell material.		
4.1.5	Chest Piece	Sample		
4.1.6	Sleeve Head Pads	Sample		
4.1.7	Shoulder Pads	Sample		
4.3.6	Under Collar Stiffener	Sample		

SCALE OF MEASUREMENTS FOR JACKET, BLUE, ALL RANKS - MALE SIZES

SIZE DESIGNATION		BODY MEASUREMENTS		GARMENT MEASUREMENTS									
Height	Size	Chest	Waist	Chest button-hole to button	Waist button-hole to button	Front Length	Back Length to waist	Full Back Length	Sleeve			X Back Width	Shoulder Width
									Overarm Length	Underarm Length	Cuff Circumference		
Short 160 - 167.5 (5'3" - 5'6")	34S	87	74	100.5	84.5	74.3	41.1	71.8	63.5	44.75	29.6	42.75	14.7
	36S	92	79	105.5	89.5	75.1	41.7	72.4	64	44.75	30.1	44	15.05
	38S	97	84	110.5	94.5	75.9	42.3	73	64.5	44.75	30.7	45.25	15.4
	40S	102	89	115.5	99.5	76.7	43	73.6	65	44.75	31.3	46.5	15.75
	42S	107	94	120.5	104.5	77.5	43.6	74.3	65.5	44.75	31.8	47.75	16.1
	44S	112	99	125.5	109.5	78.3	44.3	74.9	66	44.75	32.4	49	16.45
	46S	117	104	130.5	114.5	79.1	44.9	75.5	66.5	44.75	32.9	50.25	16.8
	48S	122	109	135.5	119.5	79.9	45.5	76.1	67	44.75	33.5	51.5	17.15
	50S	127	114	140.5	124.5	80.7	46.2	76.7	67.5	44.75	34.1	52.75	17.5
52S	132	119	145.5	129.5	81.5	46.8	77.3	68	44.75	34.6	54	17.85	
Regular 170 - 178 (5'7" - 5'10")	34S	87	74	100.5	84.5	79.3	44.1	76.8	66	47.25	29.6	42.75	14.7
	36R	92	79	105.5	89.5	80.1	44.7	77.4	66.5	47.25	30.1	44	15.05
	38R	97	84	110.5	94.5	80.9	45.3	78	67	47.25	30.7	45.25	15.4
	40R	102	89	115.5	99.5	81.7	46	78.6	67.5	47.25	31.3	46.5	15.75
	42R	107	94	120.5	104.5	82.5	46.6	79.3	68	47.25	31.8	47.75	16.1
	44R	112	99	125.5	109.5	83.3	47.2	79.9	68.5	47.25	32.4	49	16.45
	46R	117	104	130.5	114.5	84.1	47.9	80.5	69	47.25	32.9	50.25	16.8
	48R	122	109	135.5	119.5	84.9	48.5	81.2	69.5	47.25	33.5	51.5	17.15
	50R	127	114	140.5	124.5	85.7	49.2	81.8	70	47.25	34.1	52.75	17.5
52R	132	119	145.5	129.5	86.5	49.8	82.4	70.5	47.25	34.6	54	17.85	
MEASUREMENT LOCATION				A	B	C	D	E	F	G	H	J	K
TOLERANCES ±				1.5 cm	1.5 cm	1.5 cm	1 cm	1.5 cm	1.5 cm	1 cm	1 cm	1 cm	.5 cm

All dimensions are in centimeters unless otherwise indicated.

SCALE OF MEASUREMENTS FOR JACKET, BLUE, ALL RANKS - MALE SIZES

SIZE DESIGNATION		BODY MEASUREMENTS		GARMENT MEASUREMENTS									
Height	Size	Chest	Waist	Chest button-hole to button	Waist button-hole to button	Front Length	Back Length to waist	Full Back Length	Sleeve			X Back Width	Shoulder Width
									Overarm Length	Underarm Length	Cuff Circumference		
Tall 180.5 - 188 (5'11" - 6'2")	34T	87	74	100.5	84.5	84.3	47.1	81.8	68.5	49.75	29.6	42.75	14.7
	36T	92	79	105.5	89.5	85.1	47.7	82.4	69	49.75	30.1	44	15.05
	38T	97	84	110.5	94.5	85.9	48.3	83	69.5	49.75	30.7	45.25	15.4
	40T	102	89	115.5	99.5	86.7	49	83.6	70	49.75	31.3	46.5	15.75
	42T	107	94	120.5	104.5	87.5	49.6	84.3	70.5	49.75	31.8	47.75	16.1
	44T	112	99	125.5	109.5	88.3	50.3	84.9	71	49.75	32.4	49	16.45
	46T	117	104	130.5	114.5	89.1	50.9	85.5	71.5	49.75	32.9	50.25	16.8
	48T	122	109	135.5	119.5	89.9	51.5	86.2	72	49.75	33.5	51.5	17.15
	50T	127	114	140.5	124.5	90.7	52.2	86.8	72.5	49.75	34.1	52.75	17.5
52T	132	119	145.5	129.5	91.5	52.8	87.4	73	49.75	34.6	54	17.85	
Extra Tall 190.5 - 198 6'3" - 6'6"	34XT	87	74	100.5	84.5	89.3	50.1	86.8	71	52.25	29.6	42.75	14.7
	36XT	92	79	105.5	89.5	90.1	50.7	87.4	71.5	52.25	30.1	44	15.05
	38XT	97	84	110.5	94.5	90.9	51.3	88	72	52.25	30.7	45.25	15.4
	40XT	102	89	115.5	99.5	91.7	52	88.6	72.5	52.25	31.3	46.5	15.75
	42XT	107	94	120.5	104.5	92.5	52.6	89.3	73	52.25	31.8	47.75	16.1
	44XT	112	99	125.5	109.5	93.3	53.3	89.9	73.5	52.25	32.4	49	16.45
	46XT	117	104	130.5	114.5	94.1	53.9	90.5	74	52.25	32.9	50.25	16.8
	48XT	122	109	135.5	119.5	94.9	54.5	91.2	74.5	52.25	33.5	51.5	17.15
	50XT	127	114	140.5	124.5	95.7	55.2	91.8	75	52.25	34.1	52.75	17.5
52XT	132	119	145.5	129.5	96.5	55.8	92.4	75.5	52.25	34.6	54	17.85	
MEASUREMENT LOCATION				A	B	C	D	E	F	G	H	J	K
TOLERANCES ±				1.5 cm	1.5 cm	1.5 cm	1 cm	1.5 cm	1.5 cm	1 cm	1 cm	1 cm	.5 cm

All dimensions are in centimeters unless otherwise indicated.

SCALE OF MEASUREMENTS FOR JACKET, BLUE, ALL RANKS - FEMALE SIZES

SIZE DESIGNATION		BODY MEASUREMENTS		GARMENT MEASUREMENTS									
Height	Size	Chest	Seat	Chest button-hole to button	Waist button-hole to button	Front Length	Back Length to waist	Full Back Length	Sleeve			X Back Width	Shoulder Width
									Overarm Length	Underarm Length	Cuff Circumference		
Short 155 - 162.5 (5'1" - 5'4")	32 (6) S	82	90	94.5	72.5	67	37	66.3	61	45.5	30.4	38.5	12.75
	34 (8) S	87	95	99.5	77.5	67.6	37.6	67	61.5	45.5	30.6	39.75	13
	36 (10) S	92	100	104.5	82.5	68.3	38.2	67.6	62	45.5	30.8	41	13.45
	38 (12) S	97	105	109.5	87.5	69	38.9	68.3	62.5	45.5	31	42.25	13.8
	40 (14) S	102	110	114.5	92.5	69.6	39.5	68.9	63	45.5	31.2	43.5	14.15
	42 (16) S	107	115	119.5	97.5	70.3	40.2	69.5	63.5	45.5	31.4	44.75	14.5
	44 (18) S	112	120	124.5	102.5	71	40.8	70.2	64	45.5	31.6	46	14.85
	46 (20) S	117	125	129.5	107.5	71.7	41.4	70.8	64.5	45.5	31.8	47.25	15.2
	48 (22) S	122	130	134.5	112.5	72.4	42.1	71.5	65	45.5	32	48.5	15.5
Regular 165 - 172.5 (5'5" - 5'8")	32 (6) R	82	90	94.5	72.5	72	40	71.4	63.5	48	30.4	38.5	12.75
	34 (8) R	87	95	99.5	77.5	72.6	40.6	72.1	64	48	30.6	39.75	13
	36 (10) R	92	100	104.5	82.5	73.3	41.2	72.7	64.5	48	30.8	41	13.45
	38 (12) R	97	105	109.5	87.5	74	41.9	73.3	65	48	31	42.25	13.8
	40 (14) R	102	110	114.5	92.5	74.7	42.5	74	65.5	48	31.2	43.5	14.15
	42 (16) R	107	115	119.5	97.5	75.4	43.2	74.6	66	48	31.4	44.75	14.5
	44 (18) R	112	120	124.5	102.5	76.1	43.8	75.3	66.5	48	31.6	46	14.85
	46 (20) R	117	125	129.5	107.5	76.8	44.4	75.9	67	48	31.8	47.25	15.2
	48 (22) R	122	130	134.5	112.5	77.5	45.1	76.5	67.5	48	32	48.5	15.5
MEASUREMENT LOCATION				A	B	C	D	E	F	G	H	J	K
TOLERANCES ±				1.5 cm	1.5 cm	1.5 cm	1 cm	1.5 cm	1.5 cm	1 cm	1 cm	1 cm	.5 cm

All dimensions are in centimeters unless otherwise indicated.

SCALE OF MEASUREMENTS FOR JACKET, BLUE, ALL RANKS - FEMALE SIZES

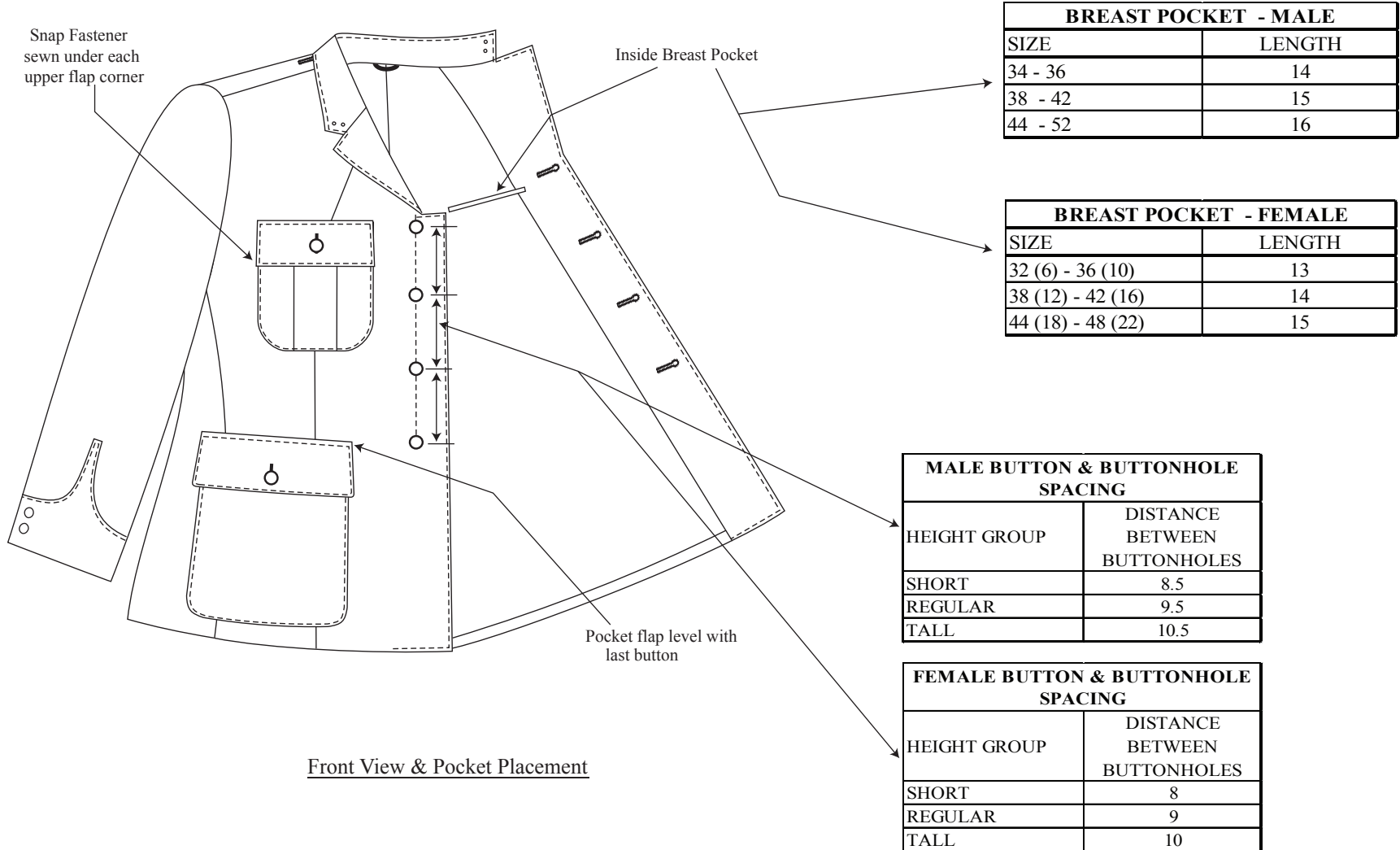
SIZE DESIGNATION		BODY MEASUREMENTS		GARMENT MEASUREMENTS									
Height	Size	Chest	Seat	Chest button-hole to button	Waist button-hole to button	Front Length	Back Length to waist	Full Back Length	Sleeve			X Back Width	Shoulder Width
									Overarm Length	Underarm Length	Cuff Circumference		
Tall 175.5 - 183 (5'9" - 6')	32 (6) T	82	90	94.5	72.5	77	43	76.5	66	50.5	30.4	38.5	12.75
	34 (8) T	87	95	99.5	77.5	77.6	43.6	77.1	66.5	50.5	30.6	39.75	13
	36 (10) T	92	100	104.5	82.5	78.3	44.2	77.7	67	50.5	30.8	41	13.45
	38 (12) T	97	105	109.5	87.5	79	44.9	78.3	67.5	50.5	31	42.25	13.8
	40 (14) T	102	110	114.5	92.5	79.7	45.5	79	68	50.5	31.2	43.5	14.15
	42 (16) T	107	115	119.5	97.5	80.4	46.2	79.7	68.5	50.5	31.4	44.75	14.5
	44 (18) T	112	120	124.5	102.5	81.1	46.8	80.3	69	50.5	31.6	46	14.85
	46 (20) T	117	125	129.5	107.5	81.8	47.4	81	69.5	50.5	31.8	47.25	15.2
48 (22) T	122	130	134.5	112.5	82.5	48.1	81.6	70	50.5	32	48.5	15.5	
MEASUREMENT LOCATION				A	B	C	D	E	F	G	H	J	K
TOLERANCES ±				1.5 cm	1.5 cm	1.5 cm	1 cm	1.5 cm	1.5 cm	1 cm	1 cm	1 cm	.5 cm

All dimensions are in centimeters unless otherwise indicated.

JACKET, BLUE, ALL RANKS, MALE & FEMALE

G.S.1045-358

Dwg. 1



BREAST POCKET - MALE	
SIZE	LENGTH
34 - 36	14
38 - 42	15
44 - 52	16

BREAST POCKET - FEMALE	
SIZE	LENGTH
32 (6) - 36 (10)	13
38 (12) - 42 (16)	14
44 (18) - 48 (22)	15

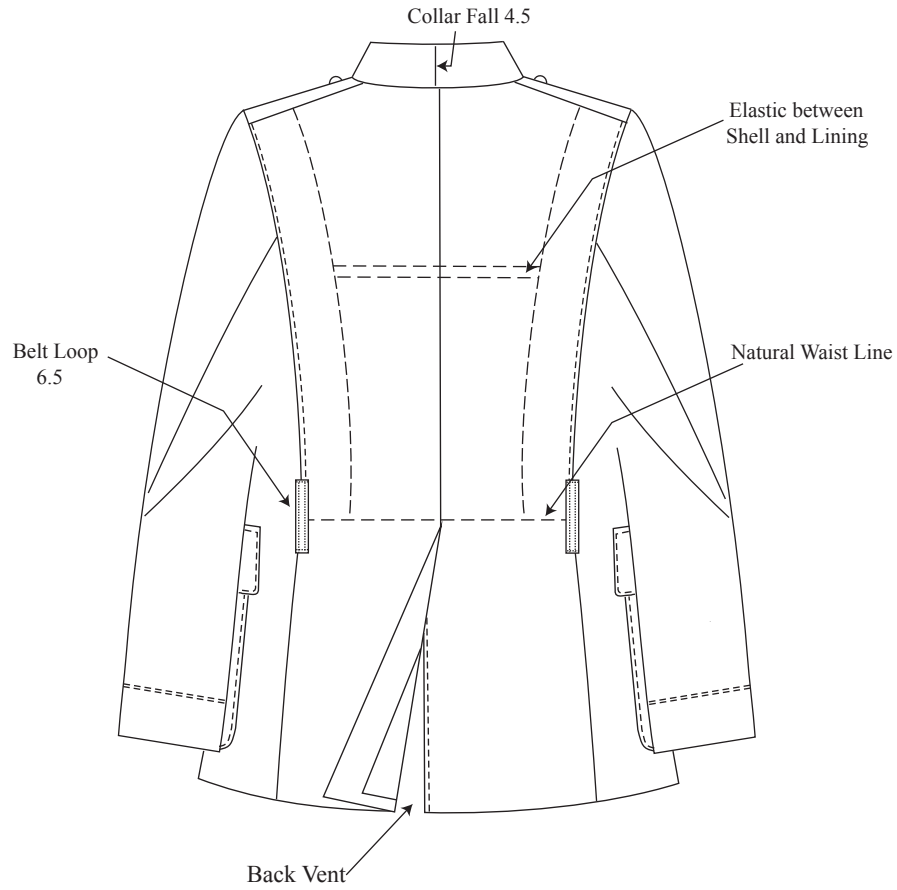
MALE BUTTON & BUTTONHOLE SPACING	
HEIGHT GROUP	DISTANCE BETWEEN BUTTONHOLES
SHORT	8.5
REGULAR	9.5
TALL	10.5

FEMALE BUTTON & BUTTONHOLE SPACING	
HEIGHT GROUP	DISTANCE BETWEEN BUTTONHOLES
SHORT	8
REGULAR	9
TALL	10

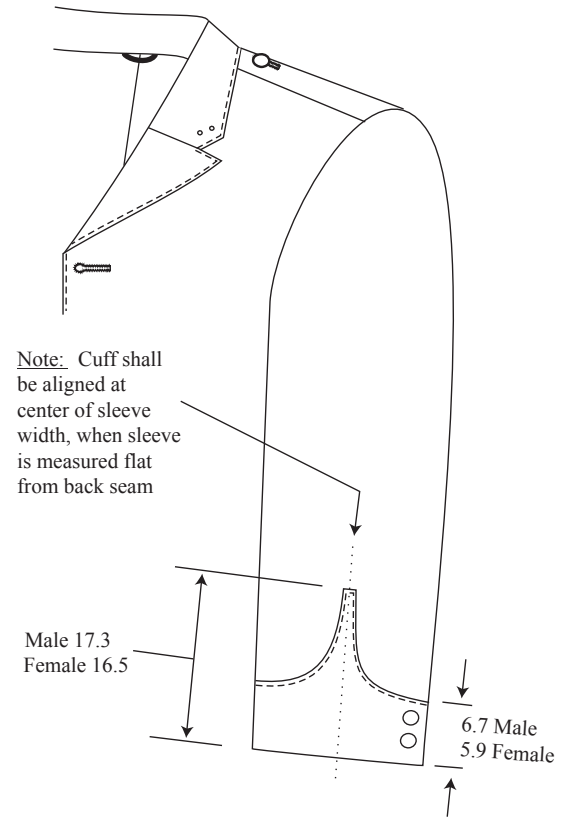
Front View & Pocket Placement

NOT TO SCALE
 All measurements in centimeters
 ± .5cm Tolerance Allowed

Dwg. 2



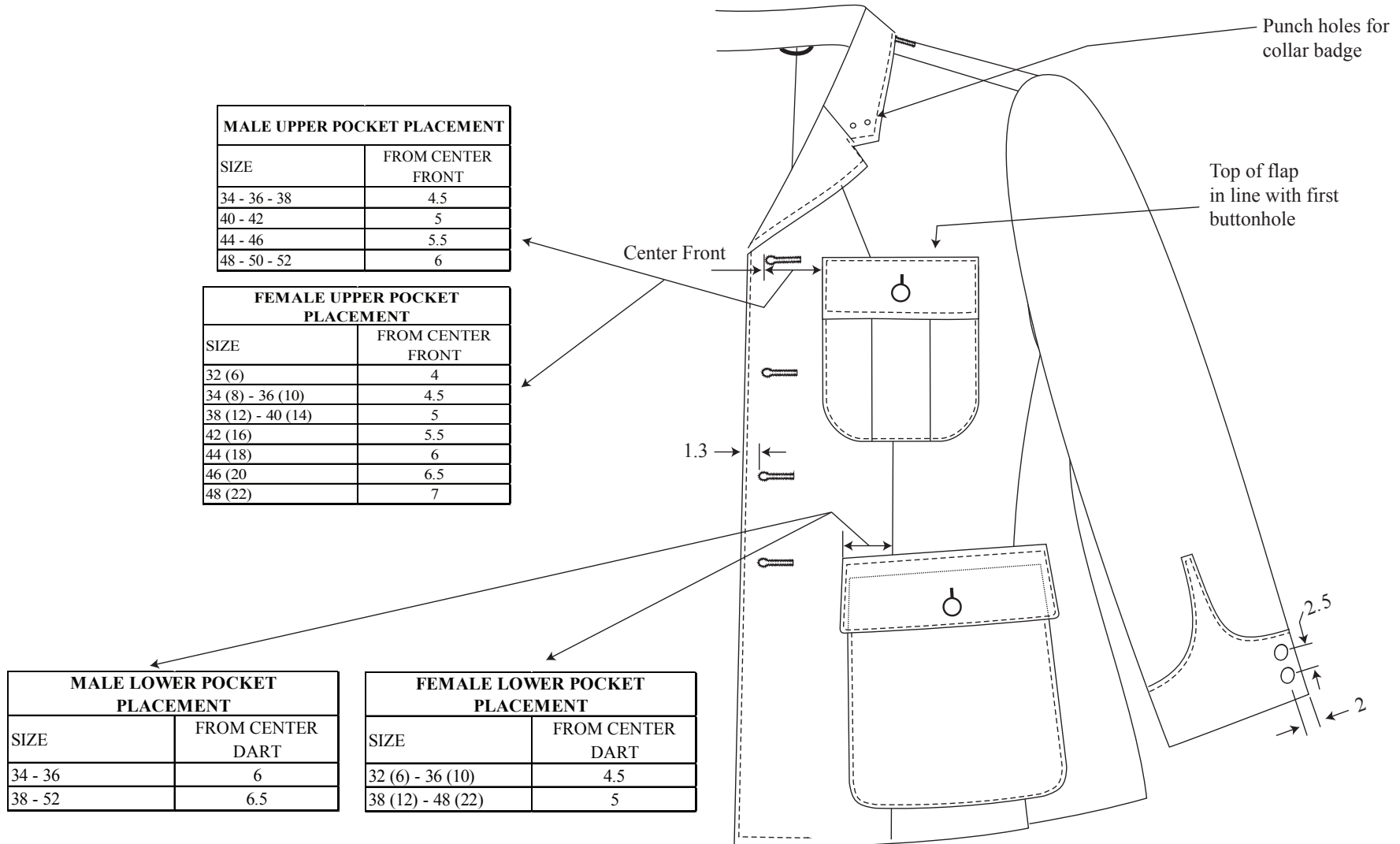
Back View



Cuff Placement Detail

NOT TO SCALE
All measurements in centimeters
± .5cm Tolerance Allowed

Dwg. 3



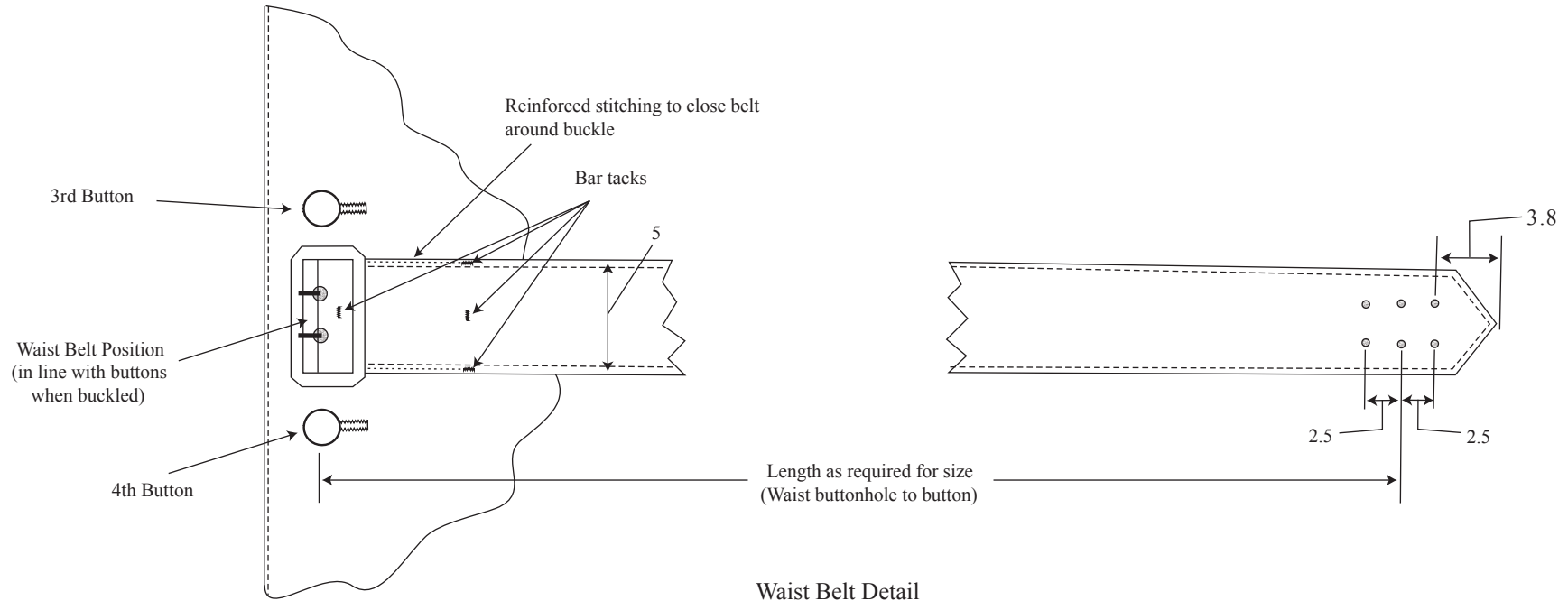
Pocket Placement

NOT TO SCALE

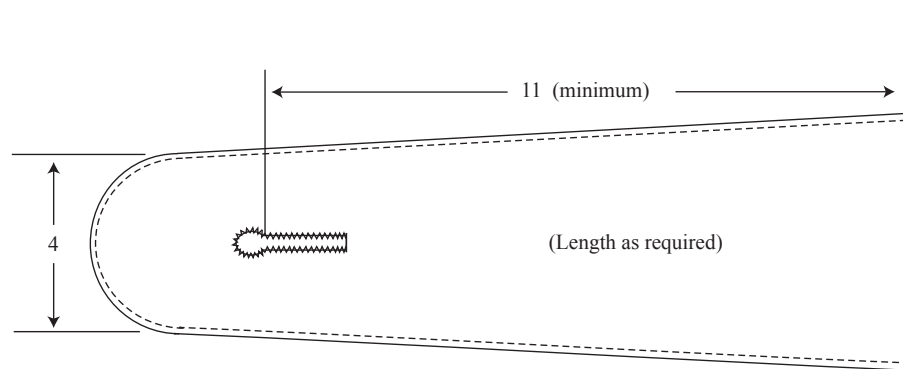
All measurements in centimeters

± .5cm Tolerance Allowed

Dwg. 4



Waist Belt Detail

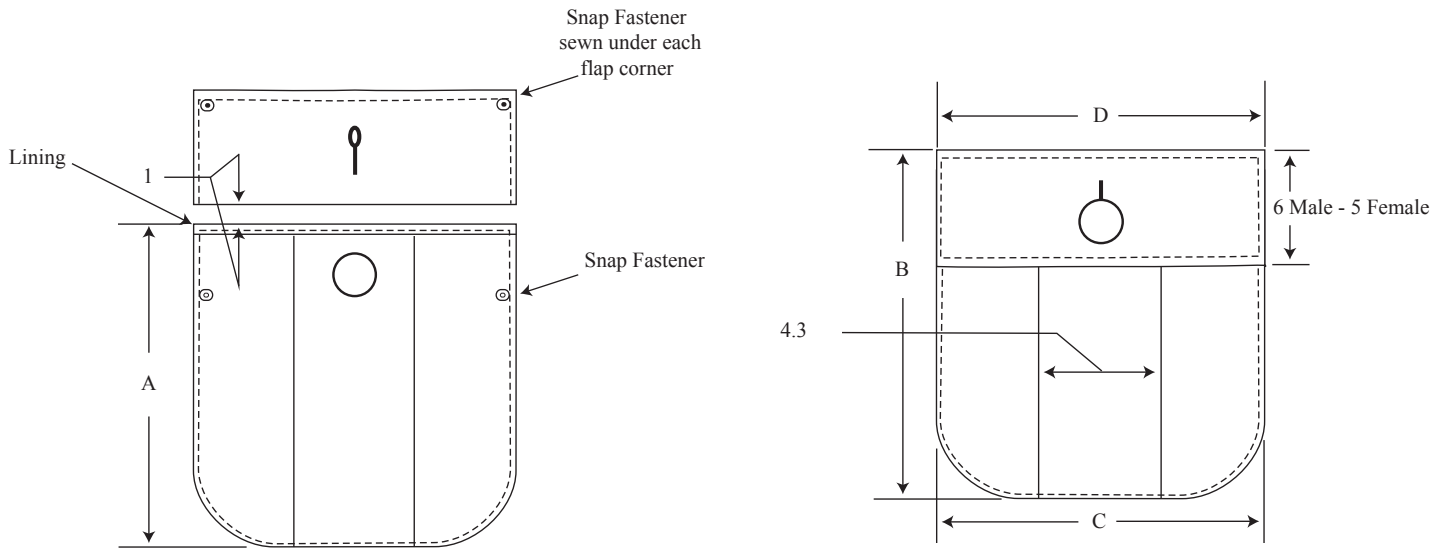


Shoulder Strap Detail

NOT TO SCALE
All measurements in centimeters
± .5cm Tolerance Allowed

Pocket Detail

Drawing # 5



Upper Pocket Detail

UPPER POCKET MALE				
SIZE	A	B	C	D
34 S - 36 S	15	16.5	12.5	13
38 S - 42 S	15	16.5	14.5	15
44 S - 52 S	15	16.5	16	16.5
34 R - 36 R	16	17.5	12.5	13
38 R - 42 R	16	17.5	14.5	15
44 R - 52 R	16	17.5	16	16.5
34 T - 36 T	17	18.5	12.5	13
38 T - 42 T	17	18.5	14.5	15
42 T - 52 T	17	18.5	16	16.5

UPPER POCKET FEMALE				
SIZE	A	B	C	D
32 (6) S - 36 (10) S	13	14.5	11.5	12
38 (12) S - 42 (16) S	13	14.5	12.5	13
44 (18) S - 48 (22) S	13	14.5	13.5	14
32 (6) R - 36 (10) R	14.5	16	11.5	12
38 (12) R - 42 (16) R	14.5	16	12.5	13
44 (18) R - 48 (22) R	14.5	16	13.5	14
32 (6) T - 36 (10) T	16	17.5	11.5	12
38 (12) T - 42 (16) T	16	17.5	12.5	13
44 (18) T - 48 (22) T	16	17.5	13.5	14

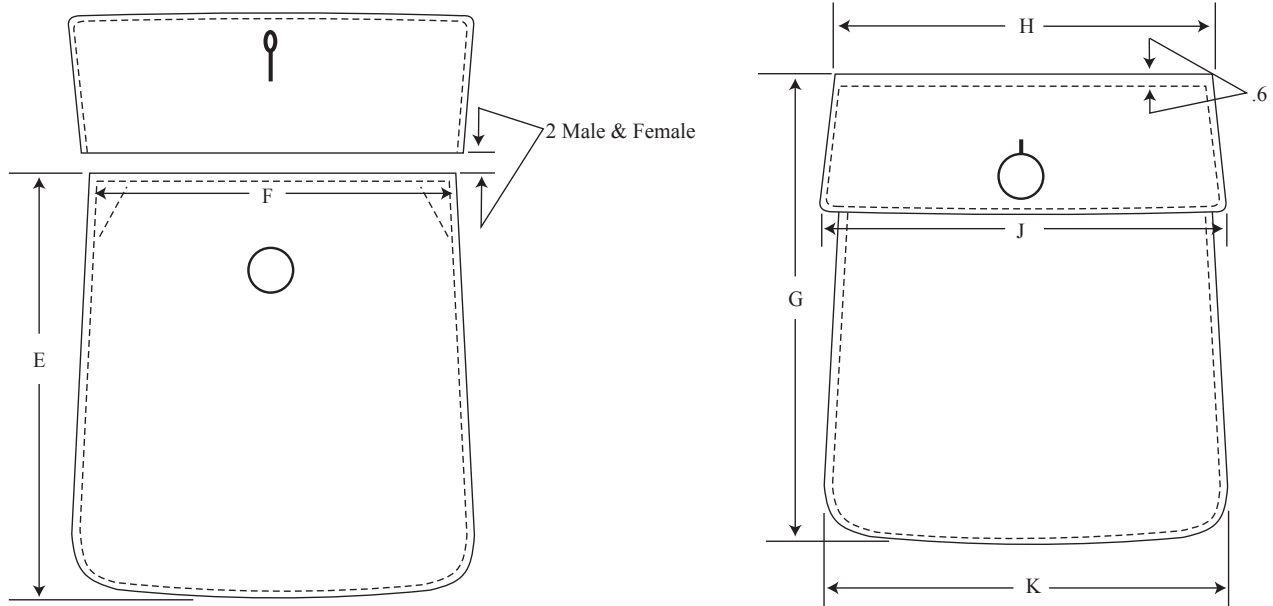
NOT TO SCALE

All measurements in centimeters

± .5cm Tolerance Allowed

Pocket Detail

Drawing # 6



Lower Pocket Detail

LOWER POCKET MALE						
SIZE	E	F	G	H	J	K
34 S - 36 S	21.5	18	24.5	20	21.5	21.5
38 S - 42 S	21.5	20	24.5	22	23.5	23.5
44 S - 52 S	21.5	22	24.5	24	25.5	25.5
34 R - 36 R	22.5	18	25.5	20	21.5	21.5
38 R - 42 R	22.5	20	25.5	22	23.5	23.5
44 R - 52 R	22.5	22	25.5	24	25.5	25.5
34 T - 36 T	24.5	18	27.5	20	21.5	21.5
38 T - 42 T	24.5	20	27.5	22	23.5	23.5
42 T - 52 T	24.5	22	27.5	24	25.5	25.5

LOWER POCKET FEMALE						
SIZE	E	F	G	H	J	K
32 (6) S - 36 (10) S	18	17	21	19	21	19
38 (12) S - 42 (16) S	18	19	21	21	23	21
44 (18) S - 48 (22) S	18	21	21	23	25	23
32 (6) R - 36 (10) R	19.5	17	22.5	19	21	19
38 (12) R - 42 (16) R	19.5	19	22.5	21	23	21
44 (18) R - 48 (22) R	19.5	21	22.5	23	25	23
32 (6) T - 36 (10) T	21	17	24	19	21	19
38 (12) T - 42 (16) T	21	19	24	21	23	21
44 (18) T - 48 (22) T	21	21	24	23	25	23

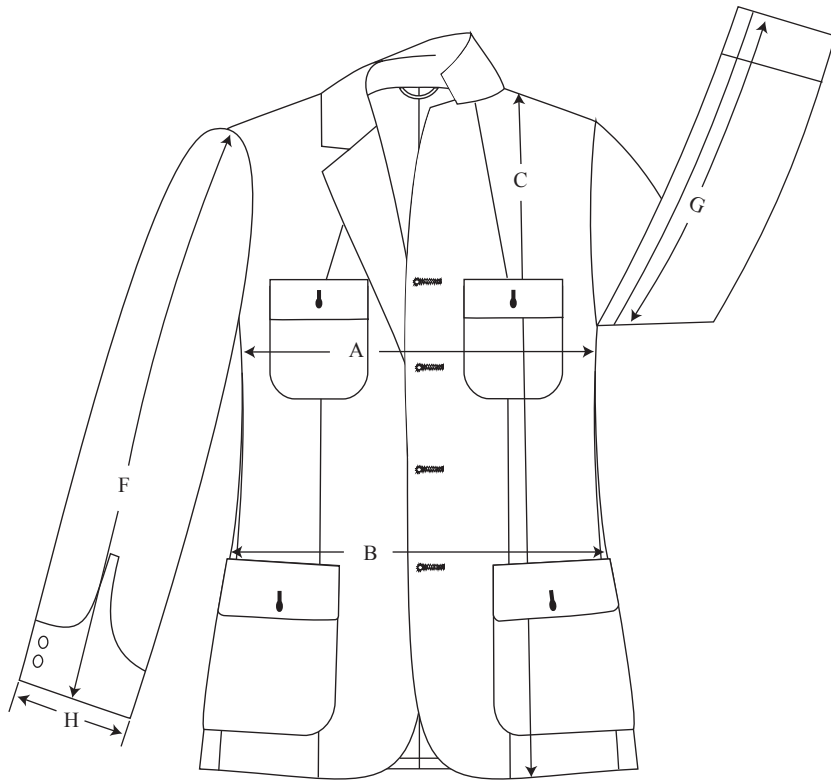
NOT TO SCALE

All measurements in centimeters

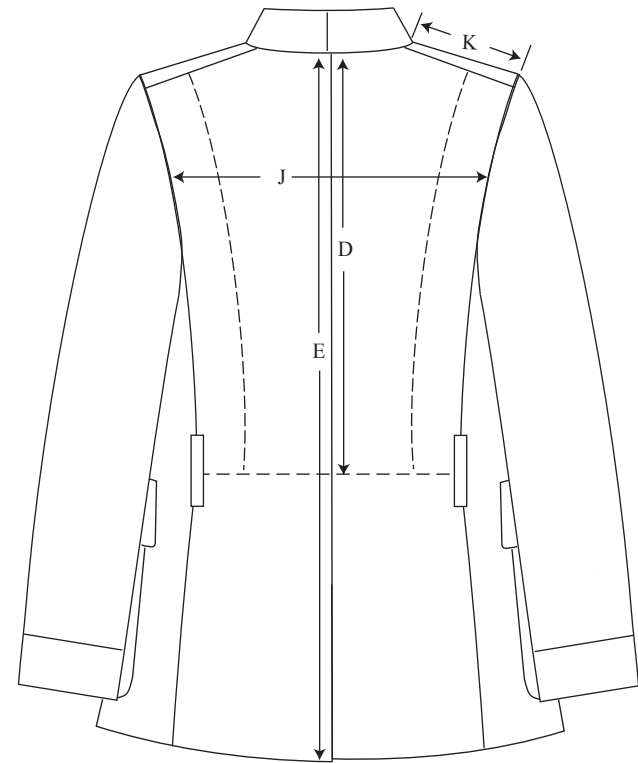
± .5cm Tolerance Allowed

DRAWING # 7

MEASUREMENT LOCATIONS



Front



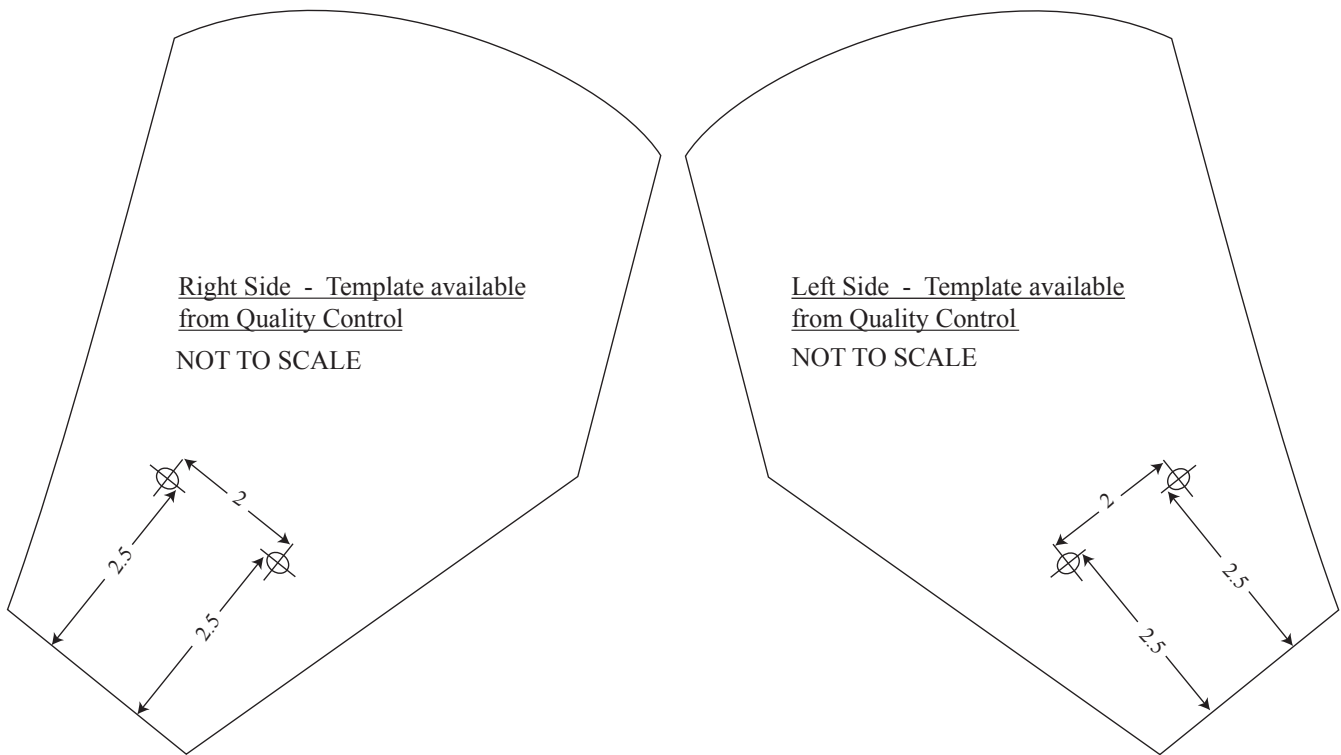
Back

All Measurements in Centimeters
NOT TO SCALE

JACKET, BLUE, ALL RANKS, MALE & FEMALE

Drawing # 8

Collar Template & Punch Hole Guide
for Collar Badge Location



NOT TO SCALE
All measurements in centimeters