

The following amendments to drawings and specifications shall be incorporated into and forms part of the contract the same as if they had been written into the original.

ARCHITECTURAL

SPECIFICATIONS

07 52 11 – SBS/APP Modified Bitumen Membrane Conventional

1. Section 2.2.1, Item 3 Cap Sheet Membrane: Revise nominal thickness to 5 mm.
2. Section 2.2.1, Item 4 Cap Sheet Flashing: Revise nominal thickness to 5 mm.
3. Section 3.4 Insulation Application, Item 5: Replace with the following text:
 - a. Mop and seal insulation to vapour barrier substrate. Provide mechanical fastening of insulation at outside corners of roof for an area of 1.5 m2. Mechanically fasten to concrete deck per manufacturer's written instructions.

12 24 00 – Window Roller Shades

1. Section 2.2, Item 6: Delete in its entirety. A Closure box is not required.
2. Section 2.2, Item 4 Mounting Brackets: Replace with the follow description: Reverse Roll Dual Mounting Bracket, grey in colour.

DRAWINGS`

Drawing 330

1. Revisions details as per ASK's 4, 5, 6, 7, 8 and 9.

Drawing 331

1. Revisions details as per ASK's 10, 11, 12, 13, 14, 15, 16 and 17.

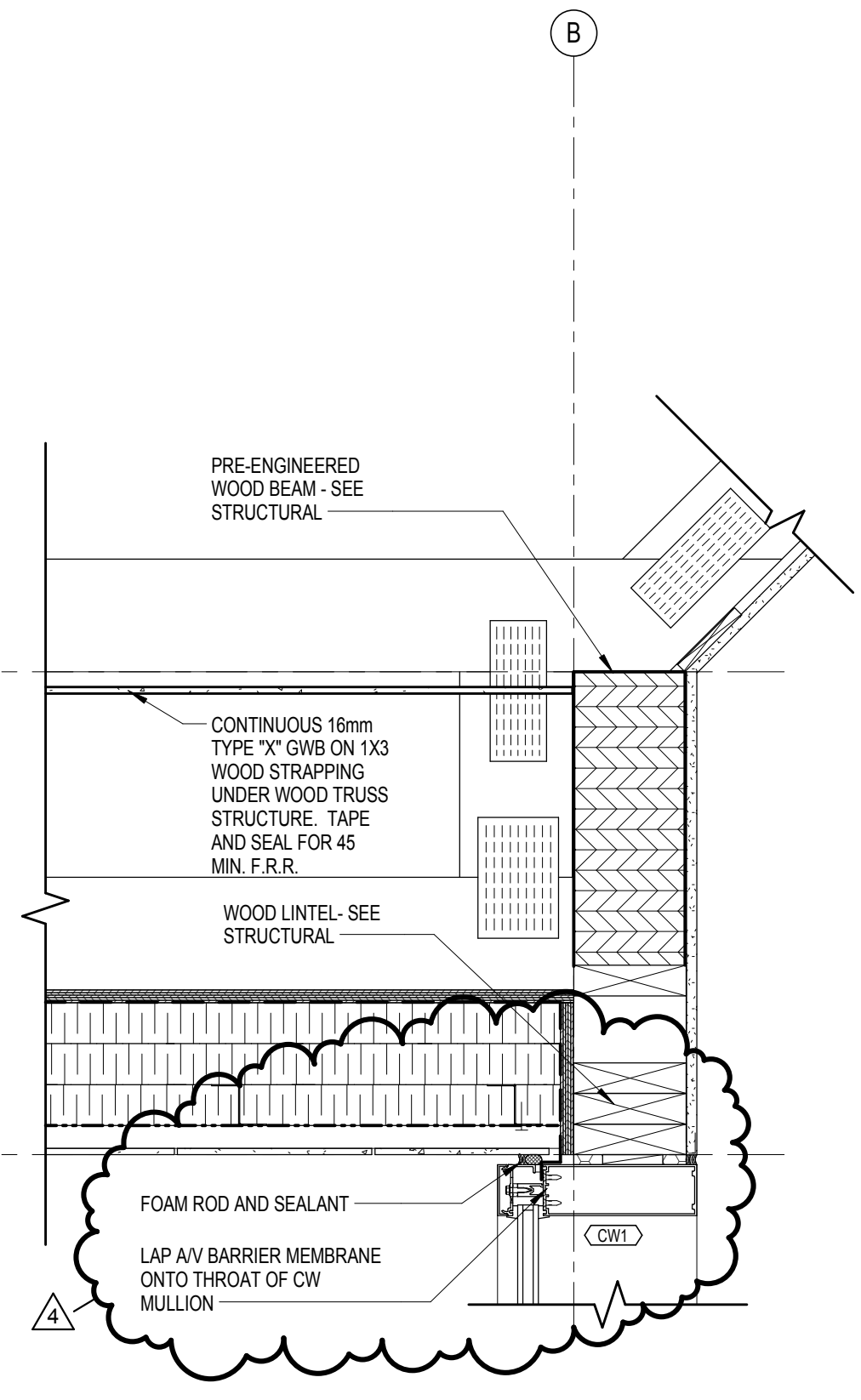
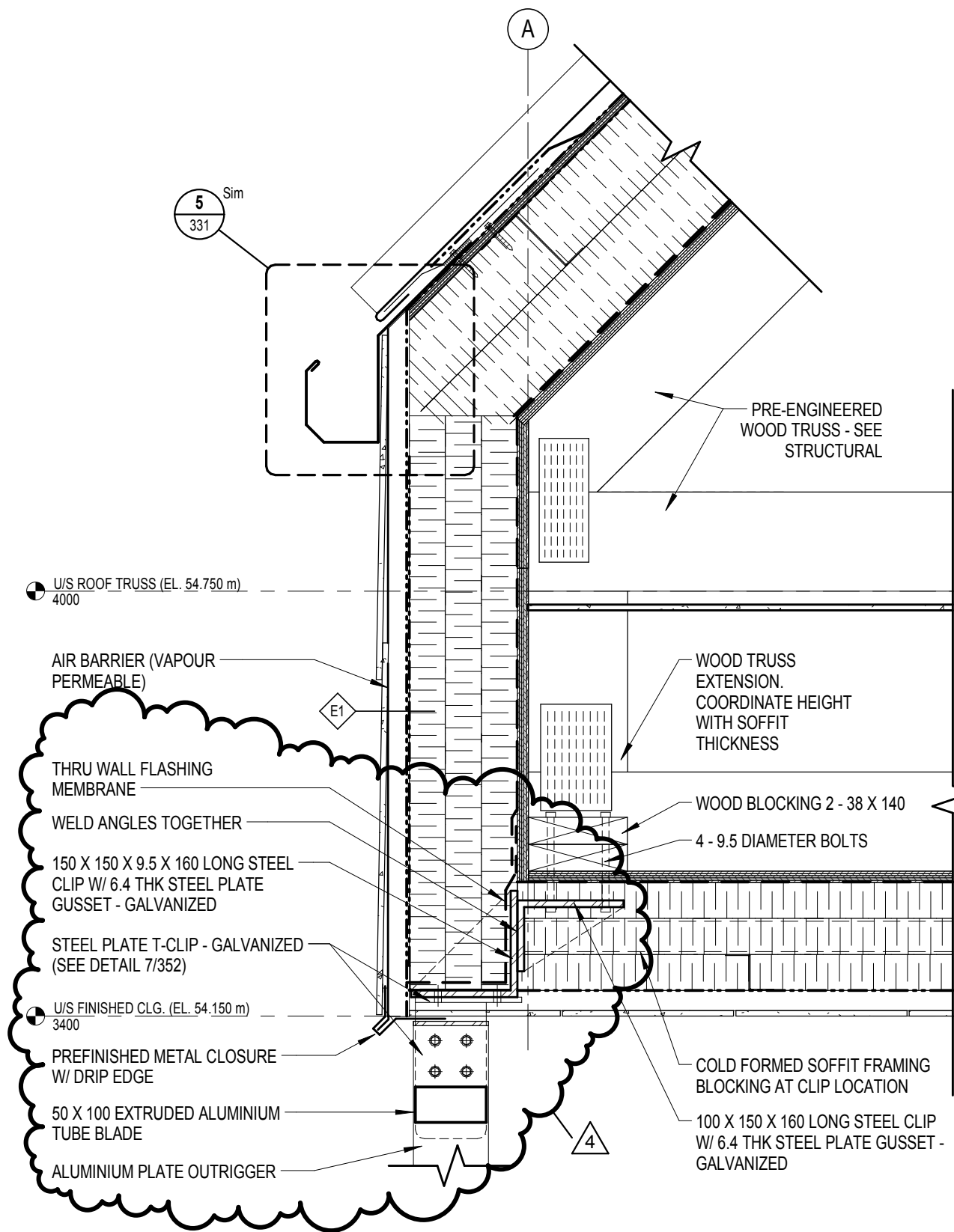
Drawing 351

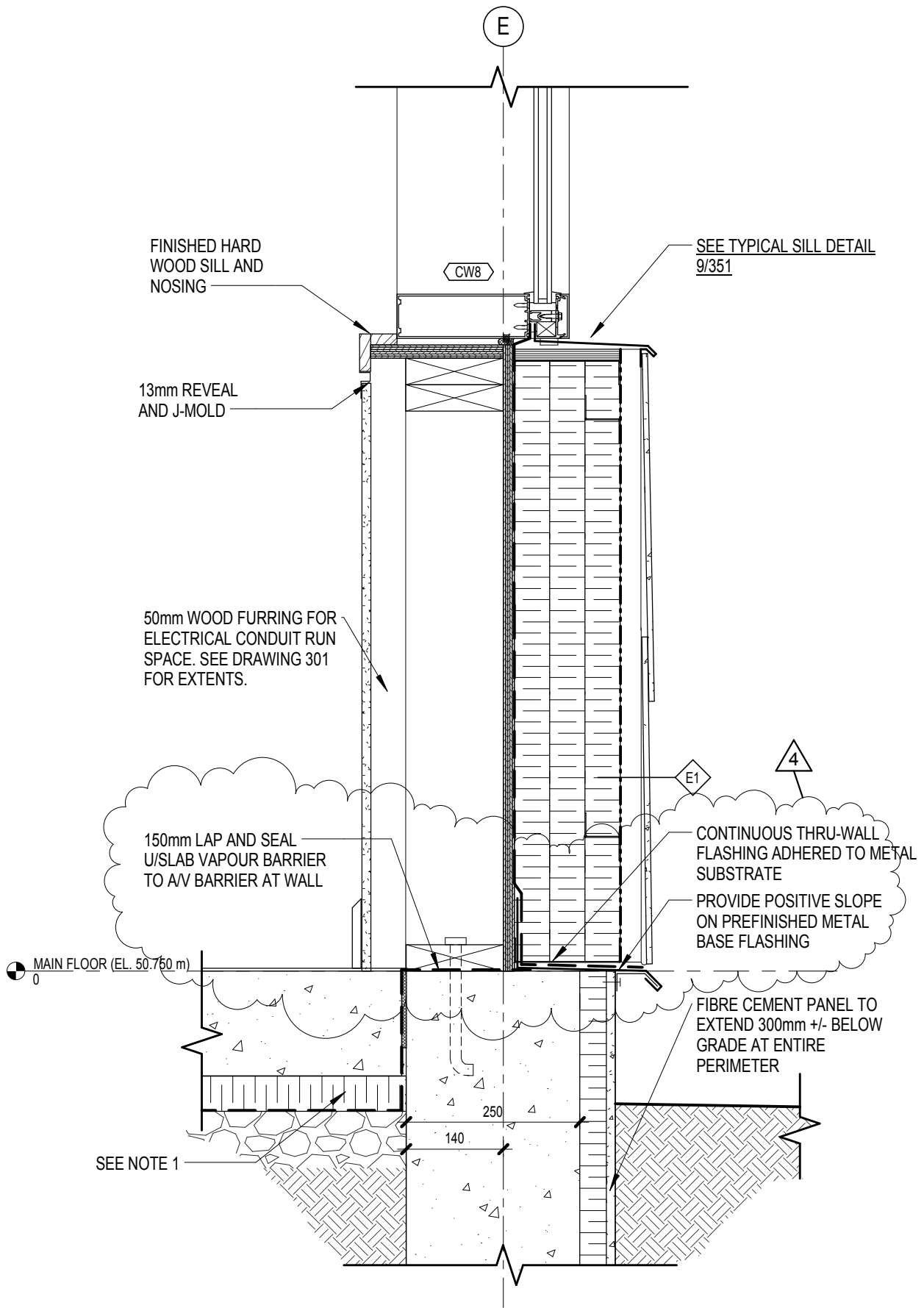
1. Revisions details as per ASK's 18, 19, 20, 21, 22, 23, 24 and 25.

Drawing 361

1. Revisions details as per ASK's 26, 27, 28 and 29.

END OF ADDENDUM NO. 4



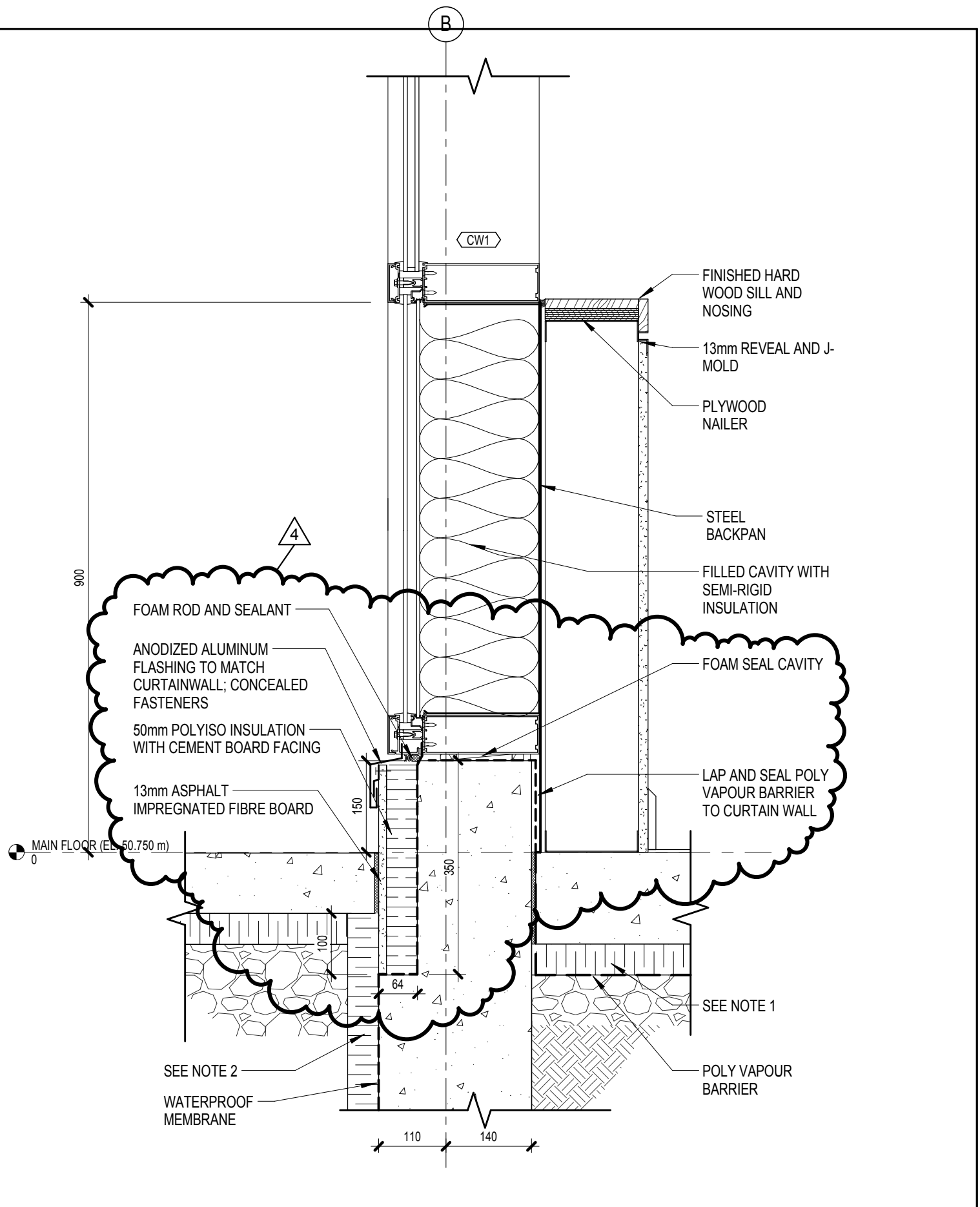


DSRA
 in association with:
KMBR ARCHITECTS PLANNERS INC
 5495 SPRING GARDEN ROAD - 4th FLOOR
 HALIFAX, NS B3J 1G2
 1 902 420 9990 f 902 420 9450 www.dsra.ca
 1788 WEST 8TH AVENUE
 VANCOUVER, BRITISH COLUMBIA V6J 1V6
 1 604 732 3361 f 604 732 1828 www.kmbr.com

JOB: 12169
INGONISH CIVIC BUILDING
 INGONISH, NS

Partial Sheet 330
Detail 1- Revisions

DRAWN BY: DP	SCALE: 1 : 8
CHECKED BY: PC	DATE: 2014.08.21
SHEET: ASK.05	REVISION:



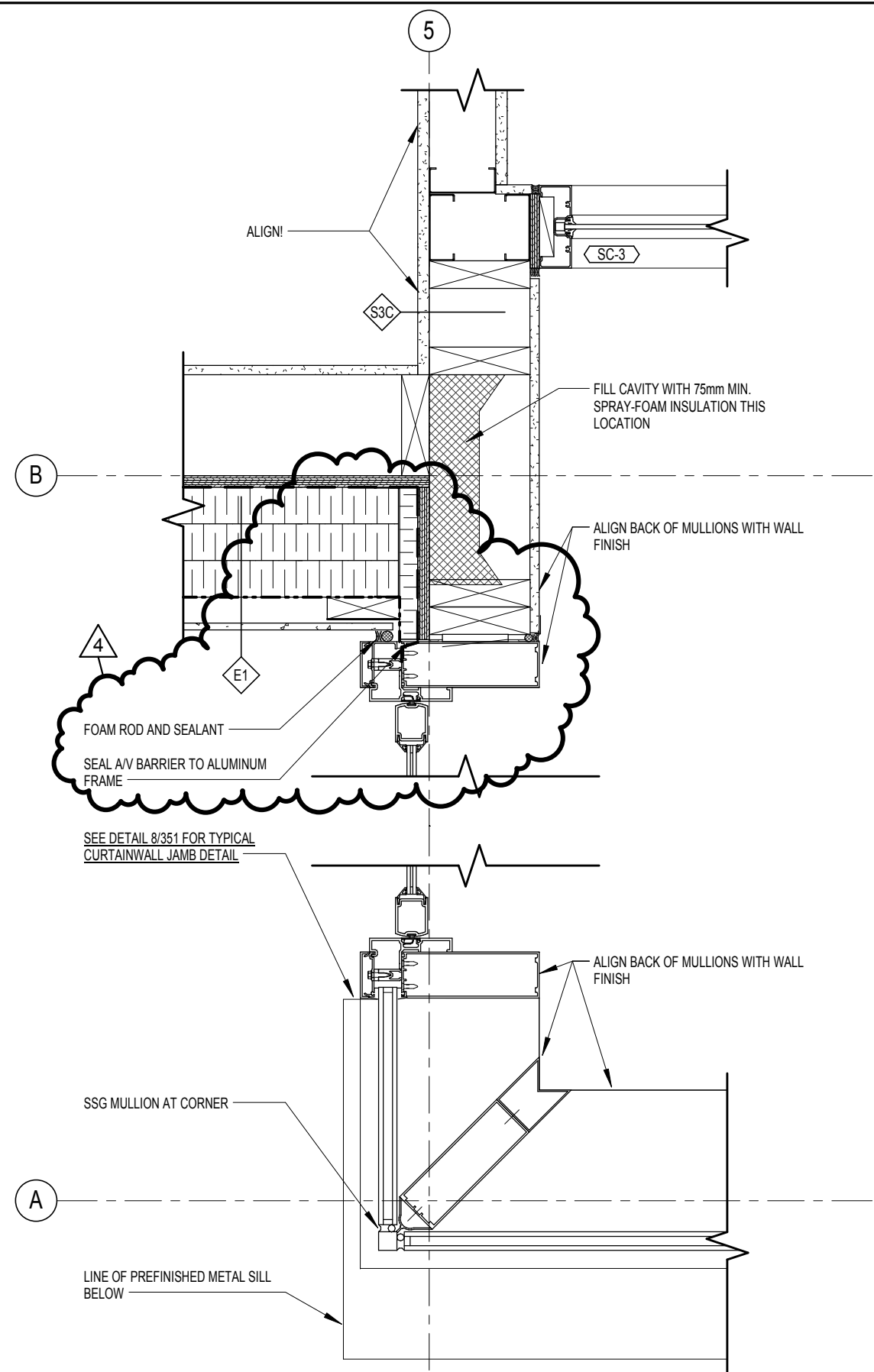
DSRA
 5495 SPRING GARDEN ROAD - 4th FLOOR
 HALIFAX, NS B3J 1G2
 1 902 420 9990 f 902 420 9450 www.dsra.ca

in association with:
KMBR ARCHITECTS PLANNERS INC
 1788 WEST 8TH AVENUE
 VANCOUVER, BRITISH COLUMBIA V6J 1V6
 1 604 732 3361 f 604 732 1828 www.kmbr.com

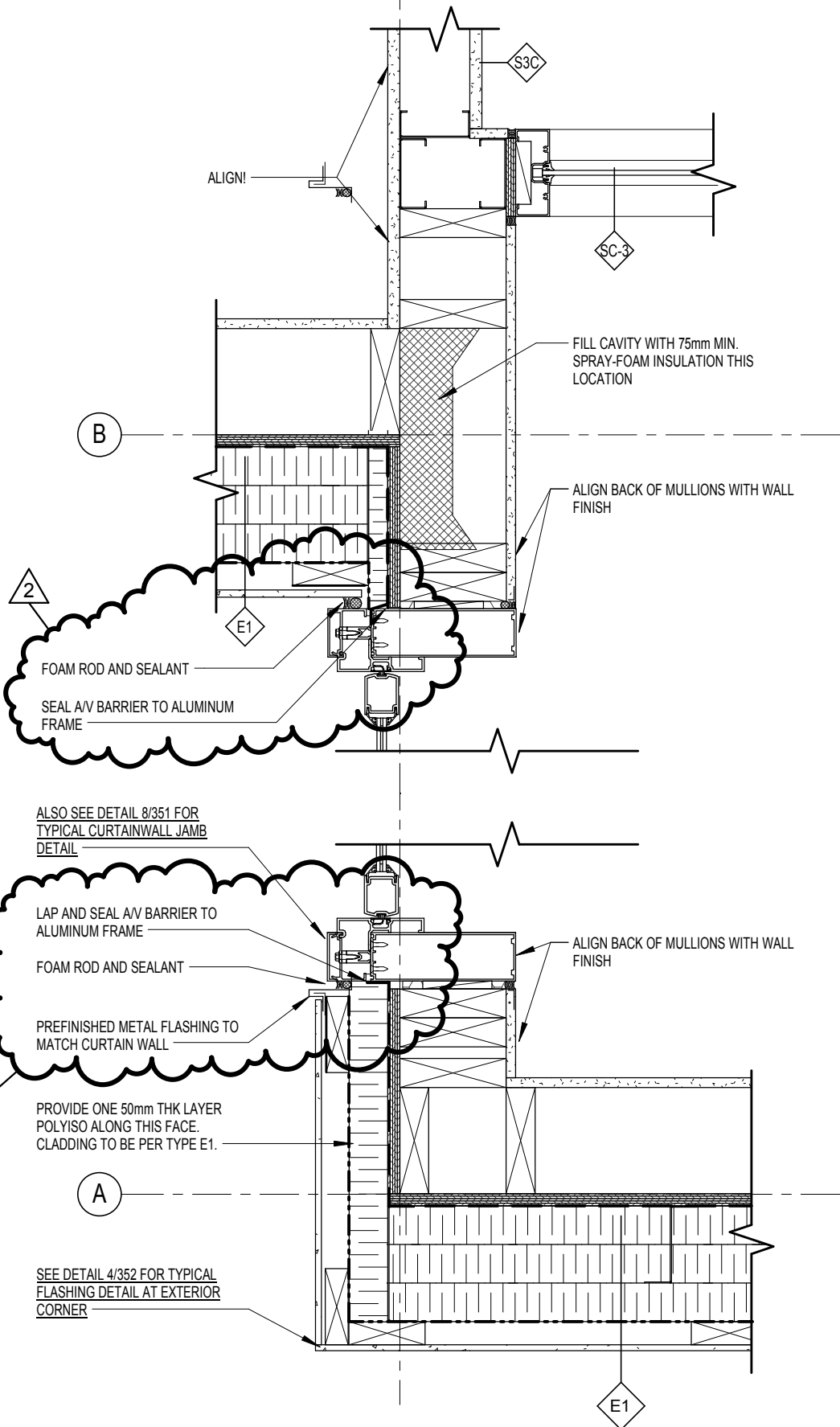
JOB: 12169
INGONISH CIVIC BUILDING
 INGONISH, NS

Partial Sheet 330
Detail 3 - Revisions

DRAWN BY: DP	SCALE: 1 : 8
CHECKED BY: PC	DATE: 2014.08.21
SHEET: ASK.06	REVISION:



5



ALSO SEE DETAIL 8/351 FOR
TYPICAL CURTAINWALL JAMB
DETAIL

LAP AND SEAL A/V BARRIER TO
ALUMINUM FRAME

FOAM ROD AND SEALANT

PREFINISHED METAL FLASHING TO
MATCH CURTAIN WALL

PROVIDE ONE 50mm THK LAYER
POLYISO ALONG THIS FACE.
CLADDING TO BE PER TYPE E1.

SEE DETAIL 4/352 FOR TYPICAL
FLASHING DETAIL AT EXTERIOR
CORNER

FILL CAVITY WITH 75mm MIN.
SPRAY-FOAM INSULATION THIS
LOCATION

ALIGN BACK OF MULLIONS WITH WALL
FINISH

ALIGN BACK OF MULLIONS WITH WALL
FINISH

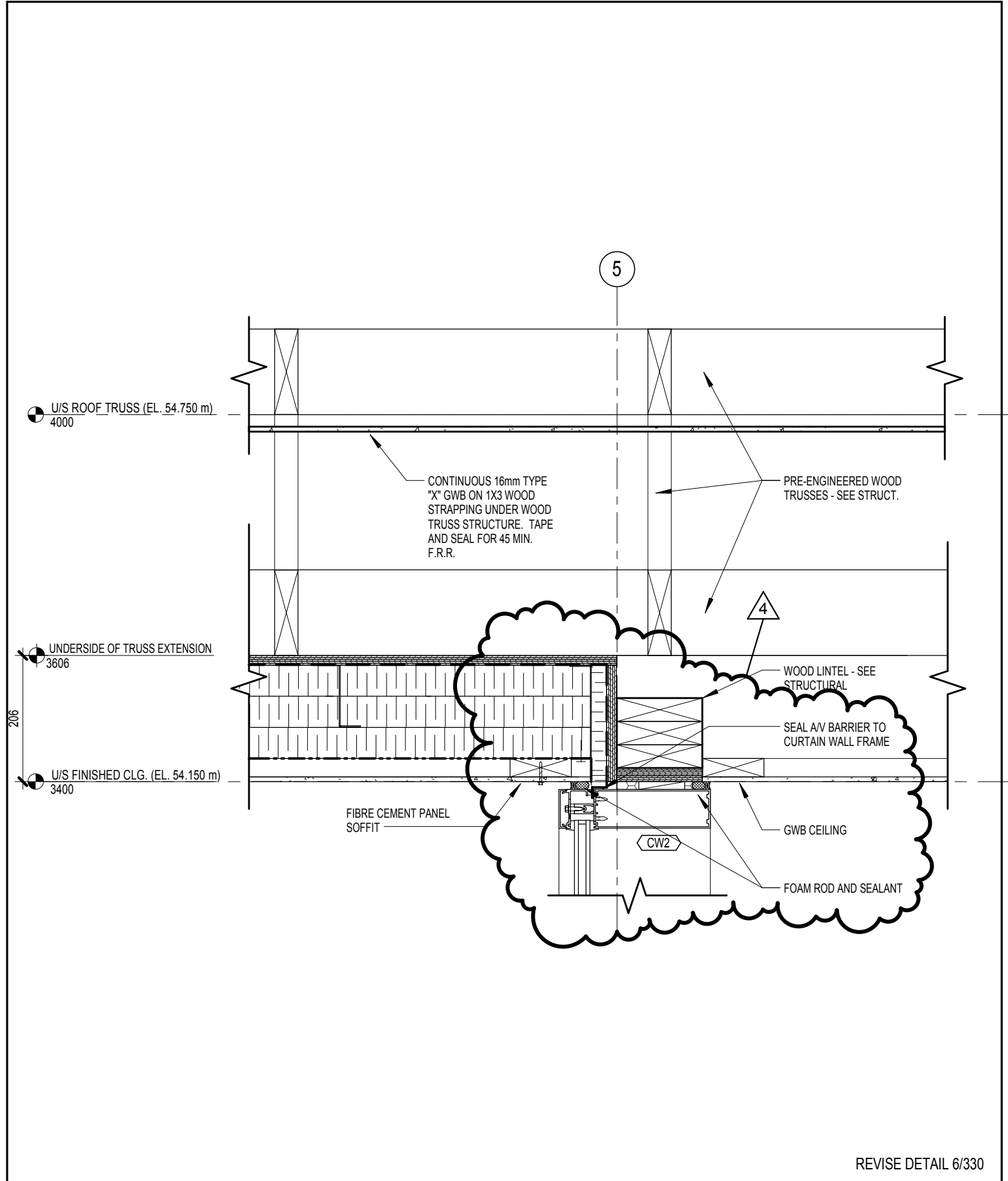
FOAM ROD AND SEALANT
SEAL A/V BARRIER TO ALUMINUM
FRAME

DSRA
in association with:
KMBR ARCHITECTS PLANNERS INC
5495 SPRING GARDEN ROAD - 4th FLOOR
HALIFAX, NS B3J 1G2
1 902 420 9990 f 902 420 9450 www.dsra.ca
1788 WEST 8TH AVENUE
VANCOUVER, BRITISH COLUMBIA V6J 1V6
1 604 732 3361 f 604 732 1828 www.kmbr.com

JOB: 12169
**INGONISH CIVIC
BUILDING**
INGONISH, NS

**Partial Sheet 330
Detail 6 - Revisions**

DRAWN BY: DP	SCALE: 1 : 8
CHECKED BY: PC	DATE: 2014.08.21
SHEET: ASK.08	REVISION:



REVISE DETAIL 6/330

DSRA
 5495 SPRING GARDEN ROAD - 4th FLOOR
 HALIFAX, NS B3J 1G2
 1 902 420 9990 f 902 420 9450 www.dsra.ca

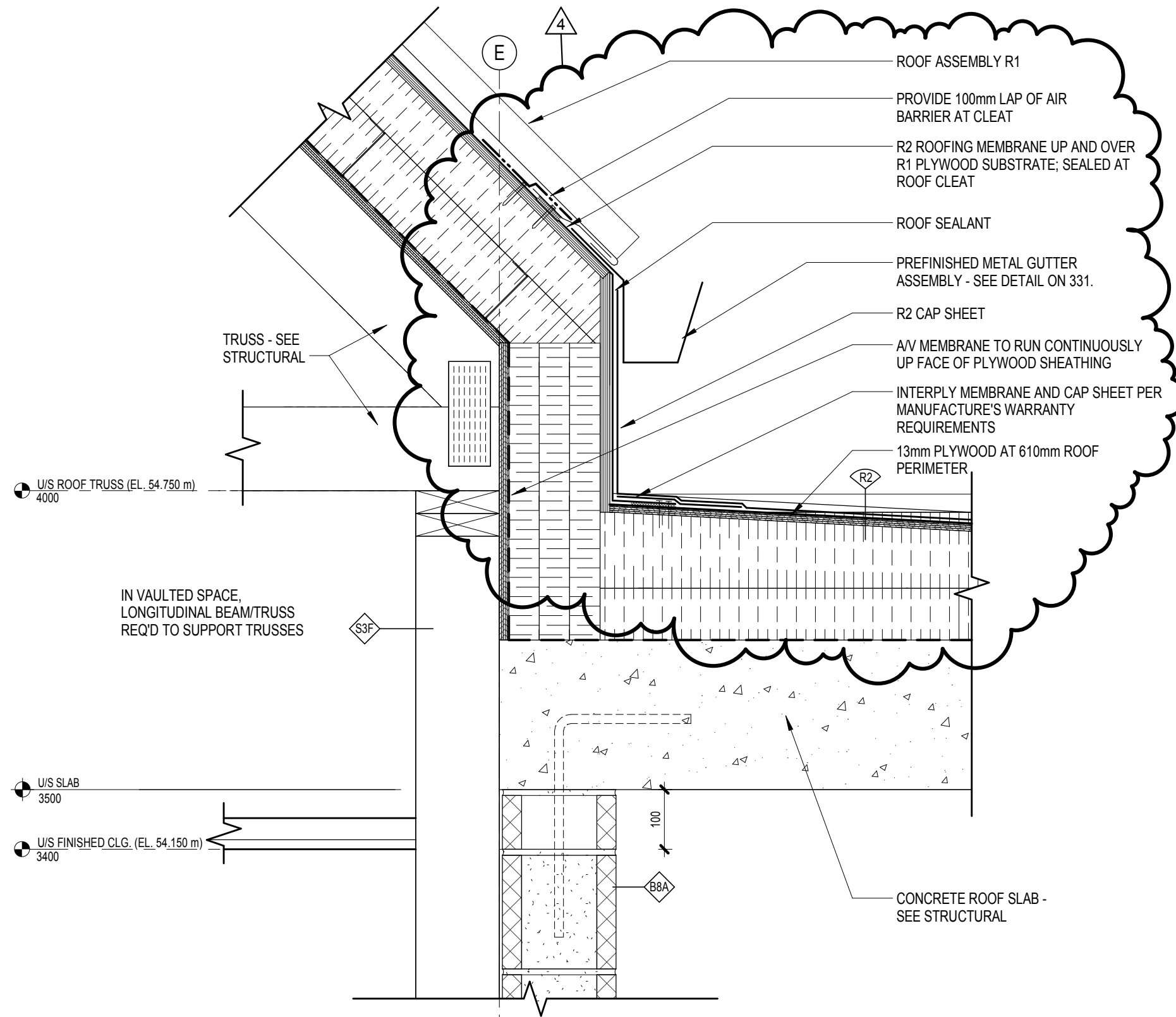
in association with:

KMBR ARCHITECTS PLANNERS INC
 1788 WEST 8TH AVENUE
 VANCOUVER, BRITISH COLUMBIA V6J 1V6
 1 604 732 3361 f 604 732 1828 www.kmbr.com

JOB: 12169
INGONISH CIVIC BUILDING
 INGONISH, NS

Partial Sheet 330
Detail 10 - Revisions

DRAWN BY: DP	SCALE: 1 : 8
CHECKED BY: PC	DATE: 2014.08.21
SHEET: ASK.09	REVISION:



- ROOF ASSEMBLY R1
- PROVIDE 100mm LAP OF AIR BARRIER AT CLEAT
- R2 ROOFING MEMBRANE UP AND OVER R1 PLYWOOD SUBSTRATE; SEALED AT ROOF CLEAT
- ROOF SEALANT
- PREFINISHED METAL GUTTER ASSEMBLY - SEE DETAIL ON 331.
- R2 CAP SHEET
- AV MEMBRANE TO RUN CONTINUOUSLY UP FACE OF PLYWOOD SHEATHING
- INTERPLY MEMBRANE AND CAP SHEET PER MANUFACTURE'S WARRANTY REQUIREMENTS
- 13mm PLYWOOD AT 610mm ROOF PERIMETER

TRUSS - SEE STRUCTURAL

U/S ROOF TRUSS (EL. 54.750 m)
4000

IN VAULTED SPACE,
LONGITUDINAL BEAM/TRUSS
REQ'D TO SUPPORT TRUSSES

U/S SLAB
3500

U/S FINISHED CLG. (EL. 54.150 m)
3400

CONCRETE ROOF SLAB -
SEE STRUCTURAL

DSRA
5495 SPRING GARDEN ROAD - 4th FLOOR
HALIFAX, NS B3J 1G2
1 902 420 9990 | 902 420 9450 www.dsra.ca

In association with:

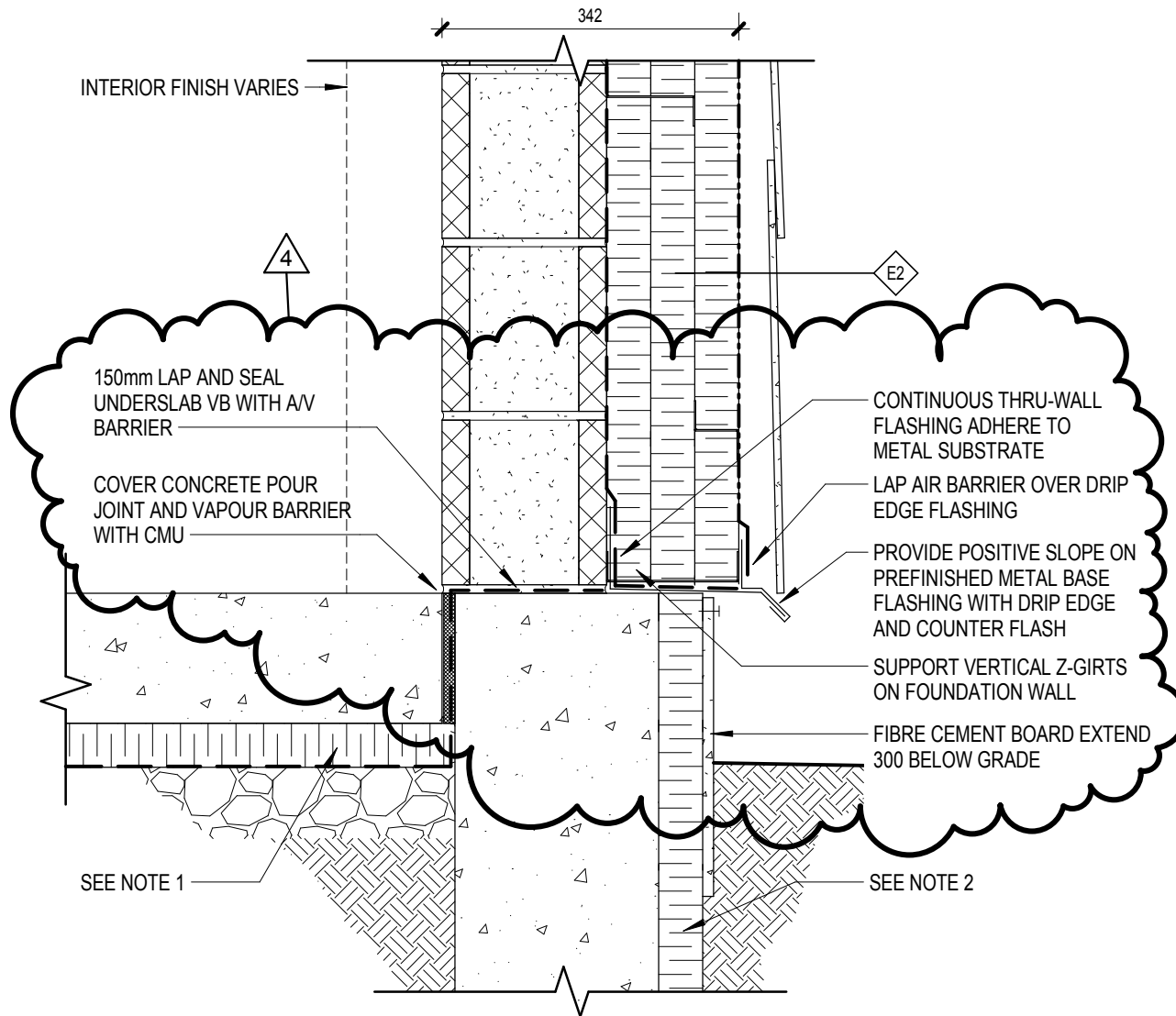
KMBR ARCHITECTS PLANNERS INC
1788 WEST 8TH AVENUE
VANCOUVER, BRITISH COLUMBIA V6J 1V6
1 604 732 3361 | 604 732 1828 www.kmbr.com

JOB: 12169
INGONISH CIVIC BUILDING

INGONISH, NS

Partial Sheet 331
Detail 4 - Revisions

DRAWN BY: DP	SCALE: 1 : 8
CHECKED BY: PC	DATE: 2014.08.21
SHEET: ASK.10	REVISION:



DSRA 5495 SPRING GARDEN ROAD - 4th FLOOR
 HALIFAX, NS B3J 1G2
 t 902 420 9990 f 902 420 9450 www.dsra.ca

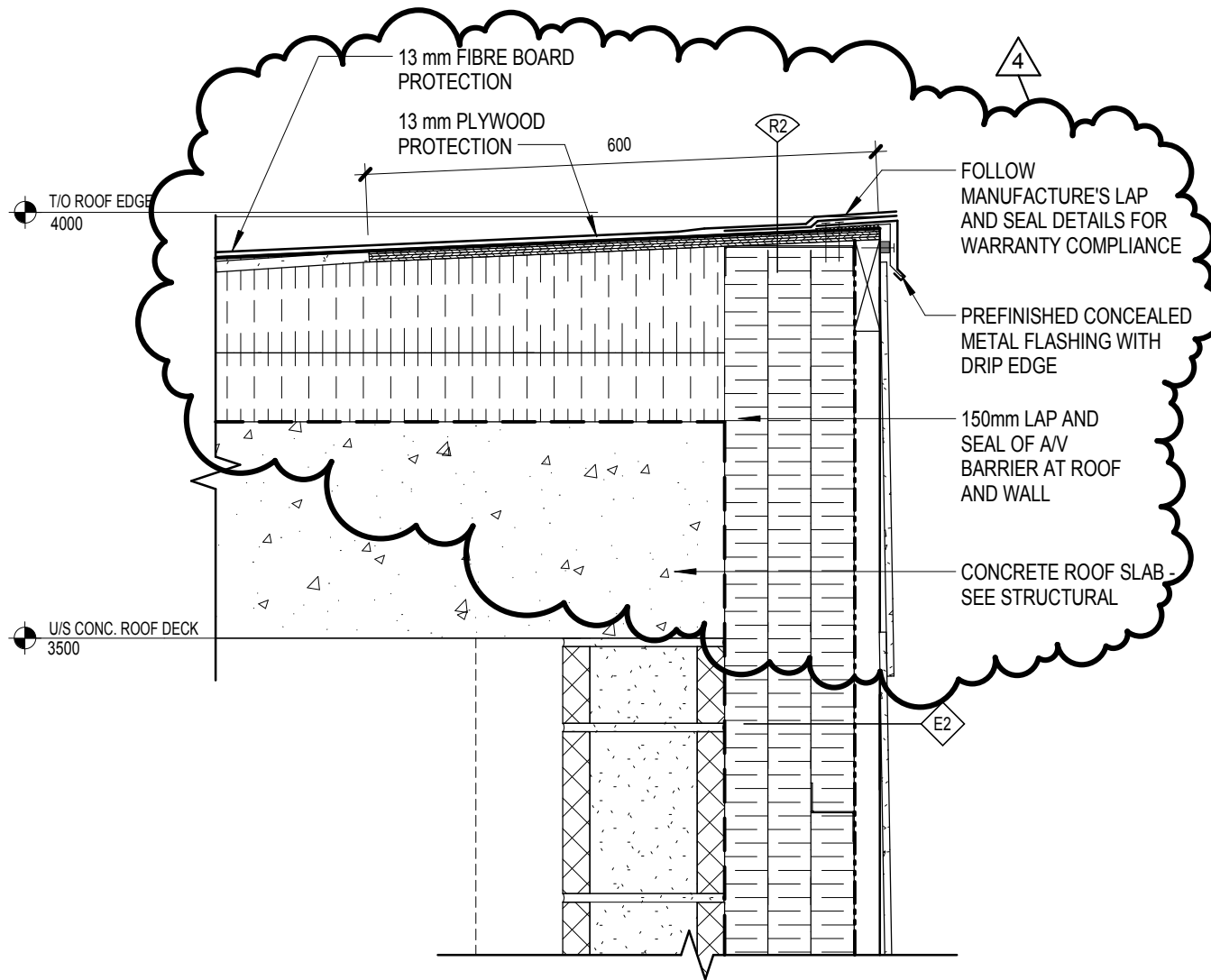
in association with:

KMBR ARCHITECTS PLANNERS INC
 1788 WEST 8TH AVENUE
 VANCOUVER, BRITISH COLUMBIA V6J 1V6
 t 604 732 3361 f 604 732 1828 www.kmbr.com

JOB: 12169
INGONISH CIVIC BUILDING
 INGONISH, NS

Partial Sheet 331
Detail 1 - Revisions

DRAWN BY: DP	SCALE: 1 : 8
CHECKED BY: PC	DATE: 2014.08.21
SHEET: ASK.11	REVISION:



DSRA 5495 SPRING GARDEN ROAD - 4th FLOOR
 HALIFAX, NS B3J 1G2
 t 902 420 9990 f 902 420 9450 www.dsra.ca

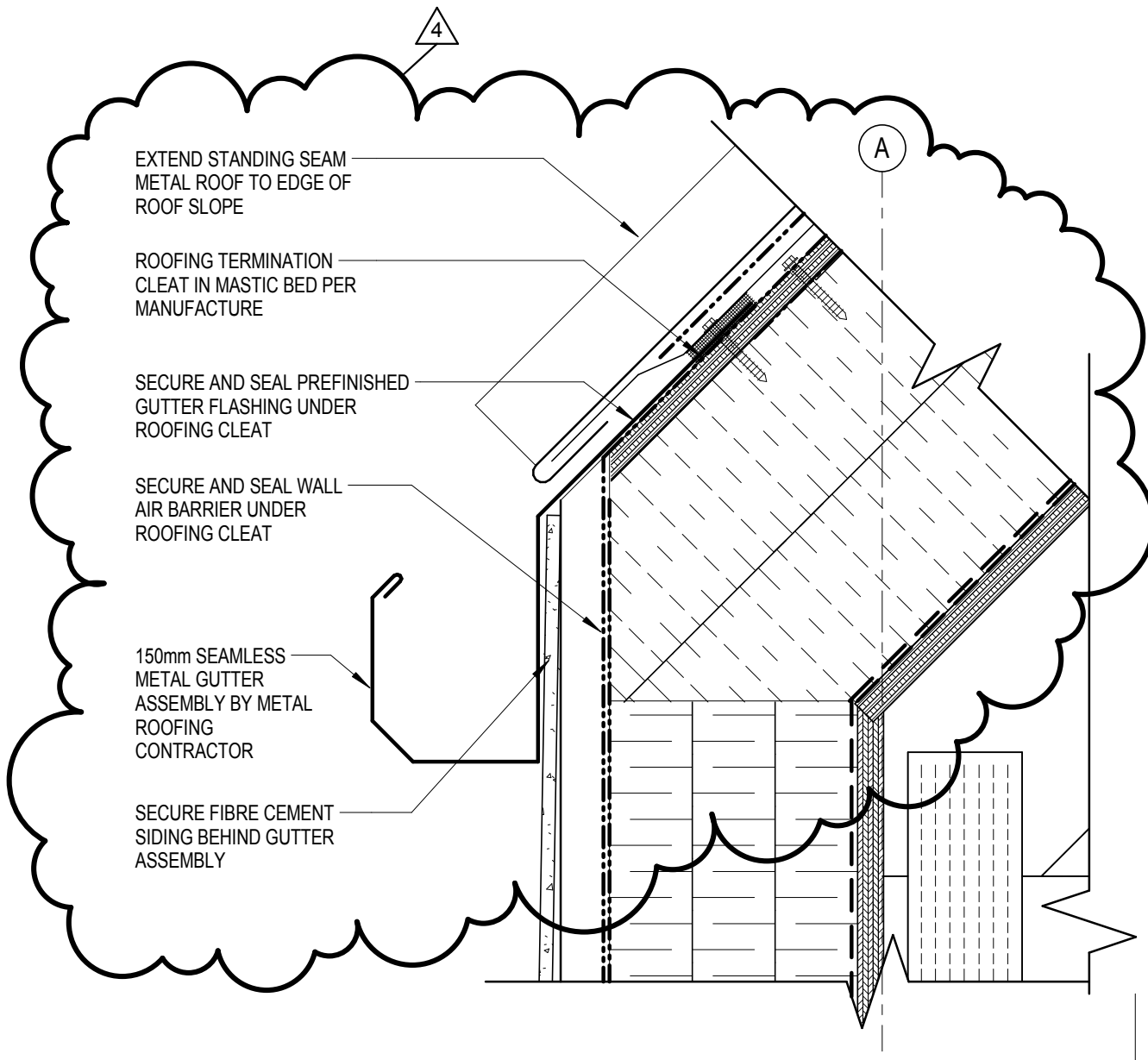
in association with:

KMBR ARCHITECTS PLANNERS INC
 1788 WEST 8TH AVENUE
 VANCOUVER, BRITISH COLUMBIA V6J 1V6
 t 604 732 3361 f 604 732 1828 www.kmbr.com

JOB: 12169
INGONISH CIVIC BUILDING
 INGONISH, NS

Partial Sheet 331
Detail 2 - Revisions

DRAWN BY: DP	SCALE: 1 : 8
CHECKED BY: PC	DATE: 2014.08.21
SHEET: ASK.12	REVISION:



DSRA

5495 SPRING GARDEN ROAD - 4th FLOOR
HALIFAX, NS B3J 1G2
t 902 420 9990 f 902 420 9450 www.dsra.ca

in association with:

KMBR

ARCHITECTS PLANNERS INC
1788 WEST 8TH AVENUE
VANCOUVER, BRITISH COLUMBIA V6J 1V6
t 604 732 3361 f 604 732 1828 www.kmbr.com

JOB: 12169

INGONISH CIVIC BUILDING

INGONISH, NS

Partial Sheet 331
Detail 5 - Revisions

DRAWN BY: DP

SCALE: 1 : 4

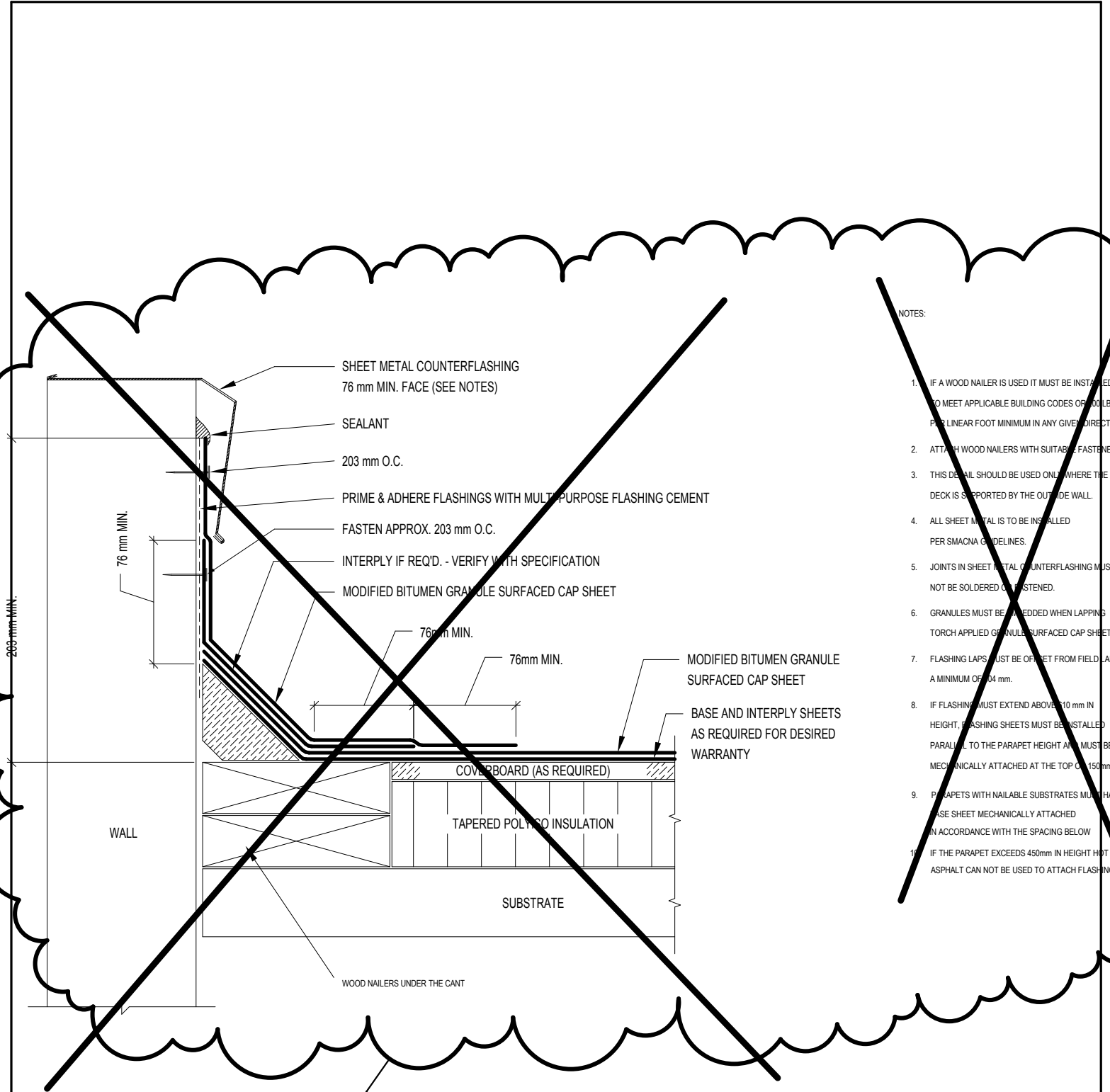
CHECKED BY: PC

DATE: 2014.08.21

SHEET:

ASK.13

REVISION:



NOTES:

1. IF A WOOD NAILER IS USED IT MUST BE INSTALLED TO MEET APPLICABLE BUILDING CODES OR 100 LBS PER LINEAR FOOT MINIMUM IN ANY GIVEN DIRECTION.
2. ATTACH WOOD NAILERS WITH SUITABLE FASTENERS.
3. THIS DETAIL SHOULD BE USED ONLY WHERE THE DECK IS SUPPORTED BY THE OUTSIDE WALL.
4. ALL SHEET METAL IS TO BE INSTALLED PER SMACNA GUIDELINES.
5. JOINTS IN SHEET METAL COUNTERFLASHING MUST NOT BE SOLDERED OR FASTENED.
6. GRANULES MUST BE BEDDED WHEN LAPPING TORCH APPLIED GRANULE SURFACED CAP SHEET.
7. FLASHING LAPS MUST BE OFFSET FROM FIELD LAPS A MINIMUM OF 104 mm.
8. IF FLASHING MUST EXTEND ABOVE 10 mm IN HEIGHT, FLASHING SHEETS MUST BE INSTALLED PARALLEL TO THE PARAPET HEIGHT AND MUST BE MECHANICALLY ATTACHED AT THE TOP OVER 150 mm CENT.
9. PARAPETS WITH NAILABLE SUBSTRATES MUST HAVE BASE SHEET MECHANICALLY ATTACHED IN ACCORDANCE WITH THE SPACING BELOW.
10. IF THE PARAPET EXCEEDS 450mm IN HEIGHT HOT ASPHALT CAN NOT BE USED TO ATTACH FLASHINGS.

2

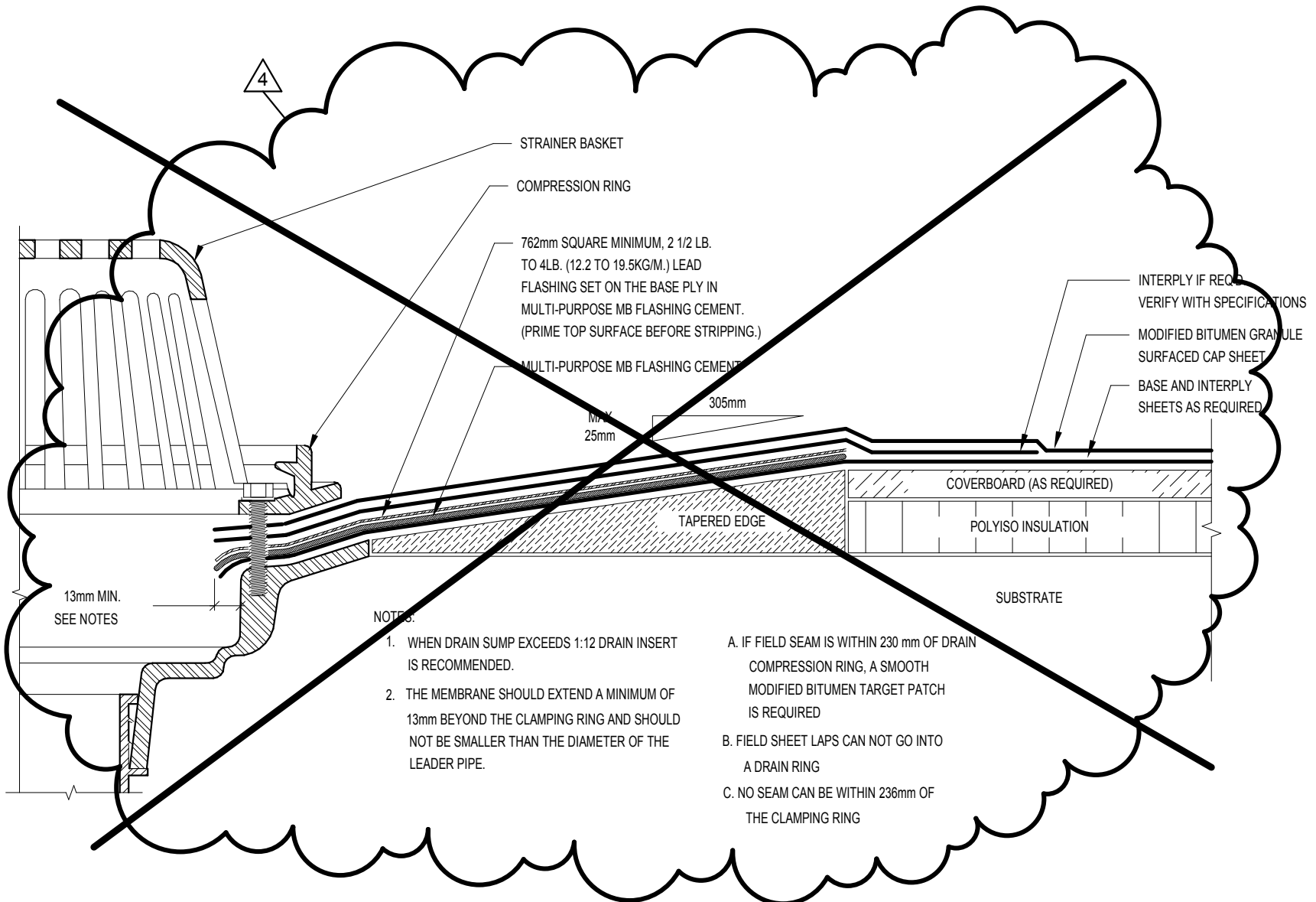
DSRA
 5495 SPRING GARDEN ROAD - 4th FLOOR
 HALIFAX, NS B3J 1G2
 1 902 420 9990 f 902 420 9450 www.dsra.ca

in association with:
KMBR ARCHITECTS PLANNERS INC
 1788 WEST 8TH AVENUE
 VANCOUVER, BRITISH COLUMBIA V6J 1V6
 1 604 732 3361 f 604 732 1828 www.kmbr.com

JOB: 12169
INGONISH CIVIC BUILDING
 INGONISH, NS

Partial Sheet 331
Detail 6 - Revisions

DRAWN BY: CH	SCALE: 1 : 2
CHECKED BY: PC	DATE: 2014.08.21
SHEET: ASK.14	REVISION:



DSRA

5495 SPRING GARDEN ROAD - 4th FLOOR
HALIFAX, NS B3J 1G2
t 902 420 9990 f 902 420 9450 www.dsra.ca

in association with:

KMBR

ARCHITECTS PLANNERS INC
1788 WEST 8TH AVENUE
VANCOUVER, BRITISH COLUMBIA V6J 1V6
t 604 732 3361 f 604 732 1828 www.kmbr.com

JOB: 12169

INGONISH CIVIC BUILDING

INGONISH, NS

Partial Sheet 331 Detail 7 - Revisions

DRAWN BY: CH

SCALE: 1 : 2

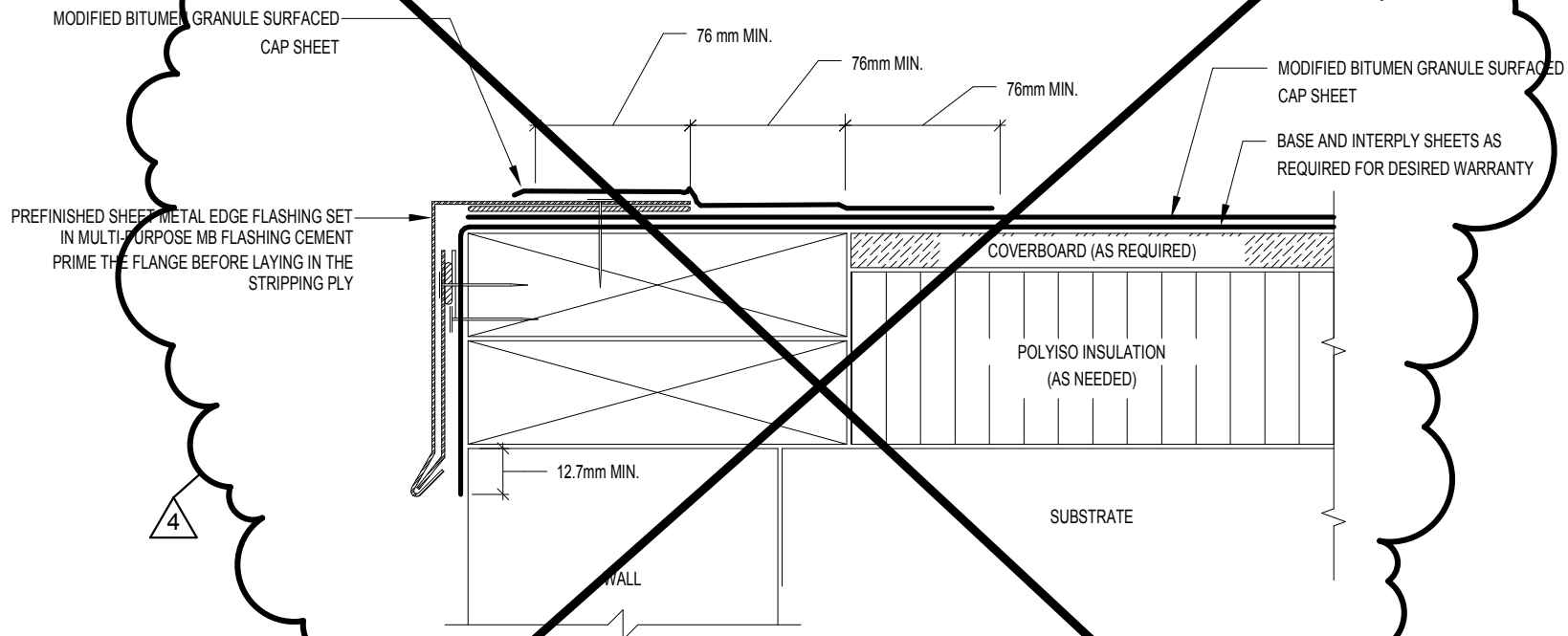
CHECKED BY: PC

DATE: 2014.08.21

SHEET:

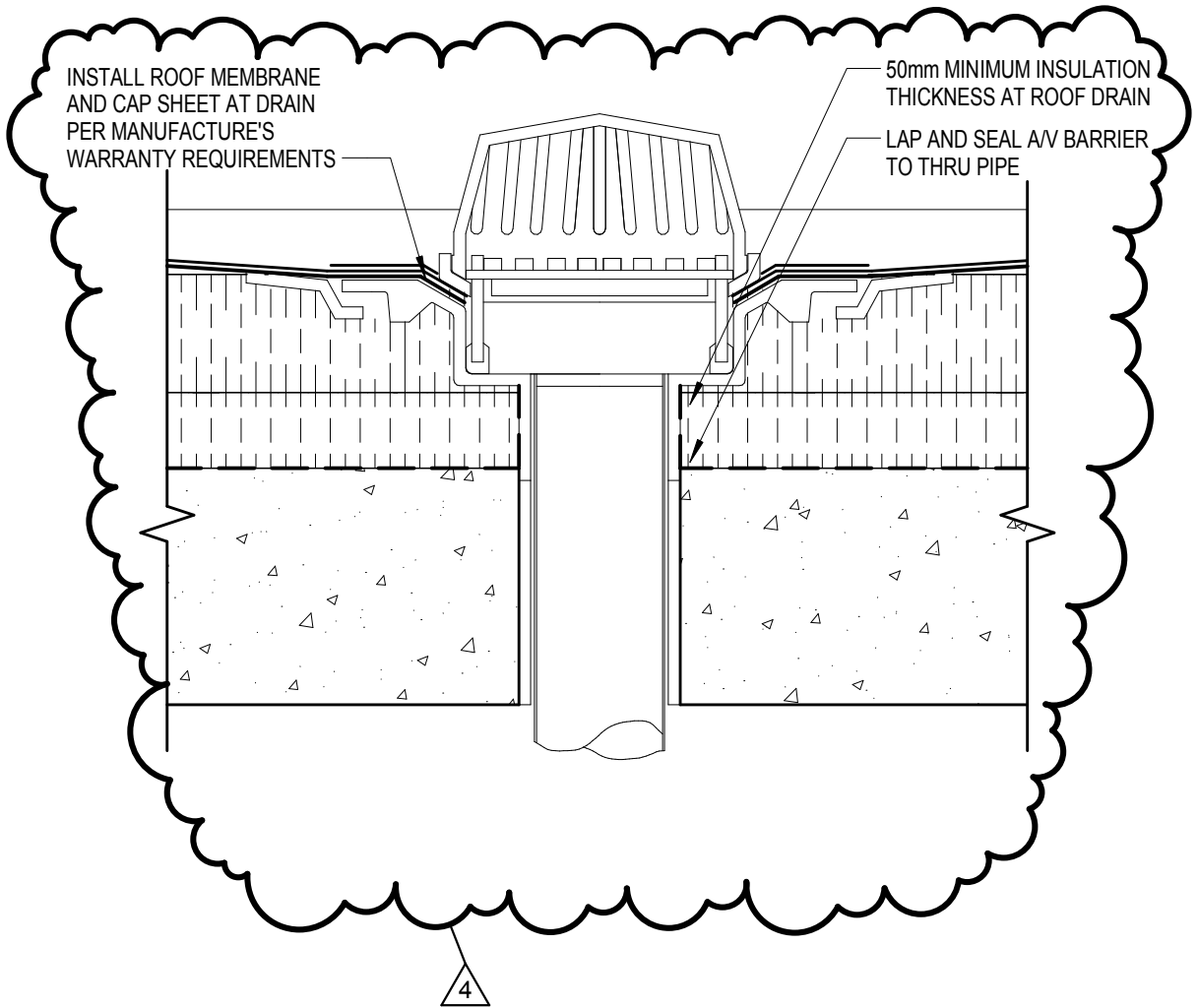
ASK.15

REVISION:



NOTES:

1. WOOD NAILER MUST BE INSTALLED TO MEET APPLICABLE BUILDING CODES OR 200 LBS PER LINEAR FOOT MINIMUM IN ANY GIVEN DIRECTION.
2. ATTACH WOOD NAILERS WITH SUITABLE FASTENERS
3. THIS DETAIL SHOULD BE USED ONLY WHERE THE DECK IS SUPPORTED BY THE OUTSIDE WALL.
4. ALL SHEET METAL IS TO BE INSTALLED PER SMACNA GUIDELINES
5. WOOD NAILER MUST EXTEND BEYOND THE METAL FLANGE IN ALL DIRECTIONS
6. PRIME EDGE METAL BEFORE STRIPPING IN WITH GRANULE SURFACED CAP SHEET



DSRA
 5495 SPRING GARDEN ROAD - 4th FLOOR
 HALIFAX, NS B3J 1G2
 1 902 420 9990 f 902 420 9450 www.dsra.ca

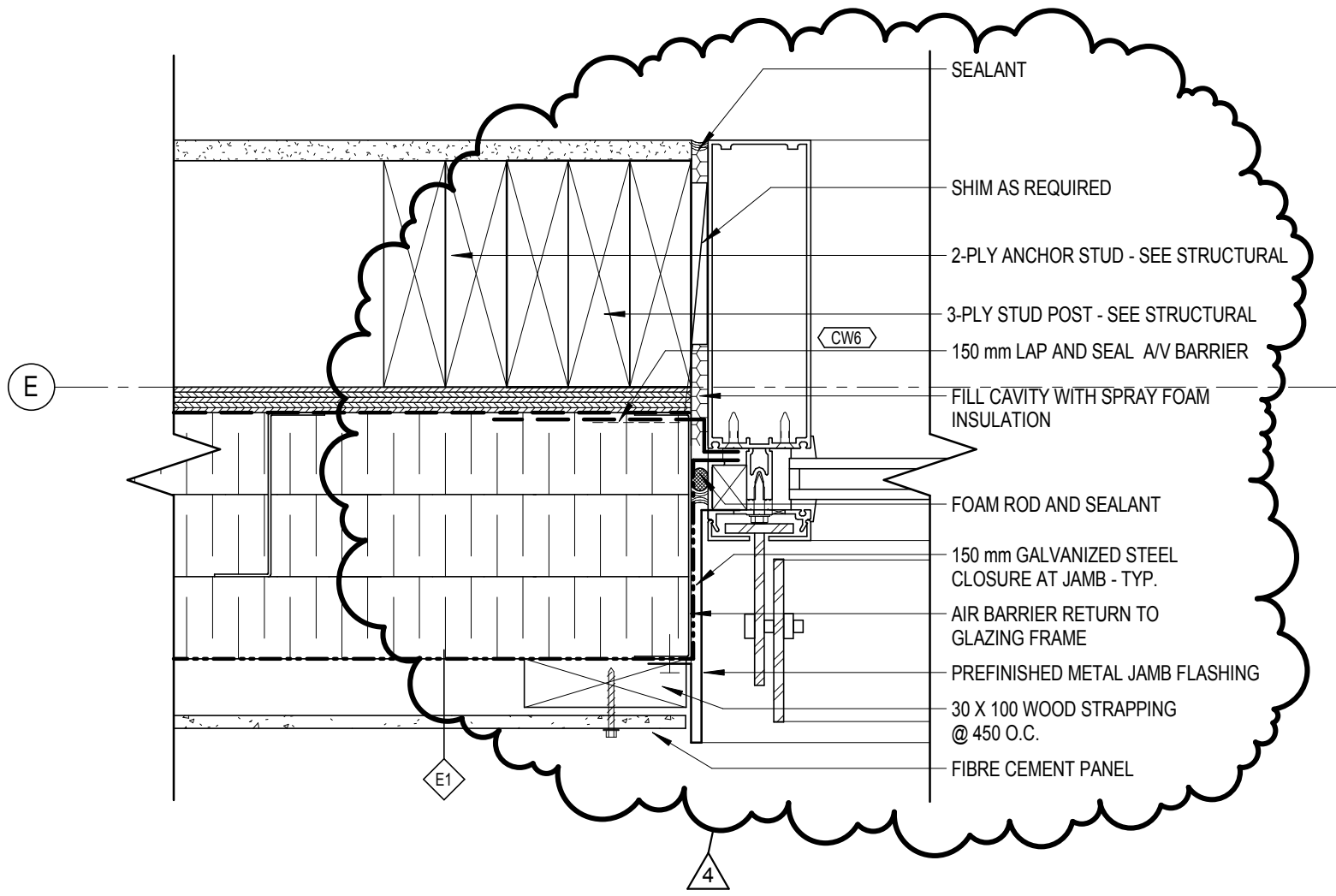
in association with:

KMBR ARCHITECTS PLANNERS INC
 1788 WEST 8TH AVENUE
 VANCOUVER, BRITISH COLUMBIA V6J 1V6
 1 604 732 3361 f 604 732 1828 www.kmbr.com

JOB: 12169
INGONISH CIVIC BUILDING
 INGONISH, NS

**Partial Sheet 331
 Detail 3 - Revisions**

DRAWN BY: CH	SCALE: 1 : 8
CHECKED BY: PC	DATE: 2014.08.21
SHEET: ASK.17	REVISION:



- SEALANT
- SHIM AS REQUIRED
- 2-PLY ANCHOR STUD - SEE STRUCTURAL
- 3-PLY STUD POST - SEE STRUCTURAL
- 150 mm LAP AND SEAL A/V BARRIER
- FILL CAVITY WITH SPRAY FOAM INSULATION
- FOAM ROD AND SEALANT
- 150 mm GALVANIZED STEEL CLOSURE AT JAMB - TYP.
- AIR BARRIER RETURN TO GLAZING FRAME
- PREFINISHED METAL JAMB FLASHING
- 30 X 100 WOOD STRAPPING @ 450 O.C.
- FIBRE CEMENT PANEL

DSRA 5495 SPRING GARDEN ROAD - 4th FLOOR
 HALIFAX, NS B3J 1G2
 t 902 420 9990 f 902 420 9450 www.dsra.ca

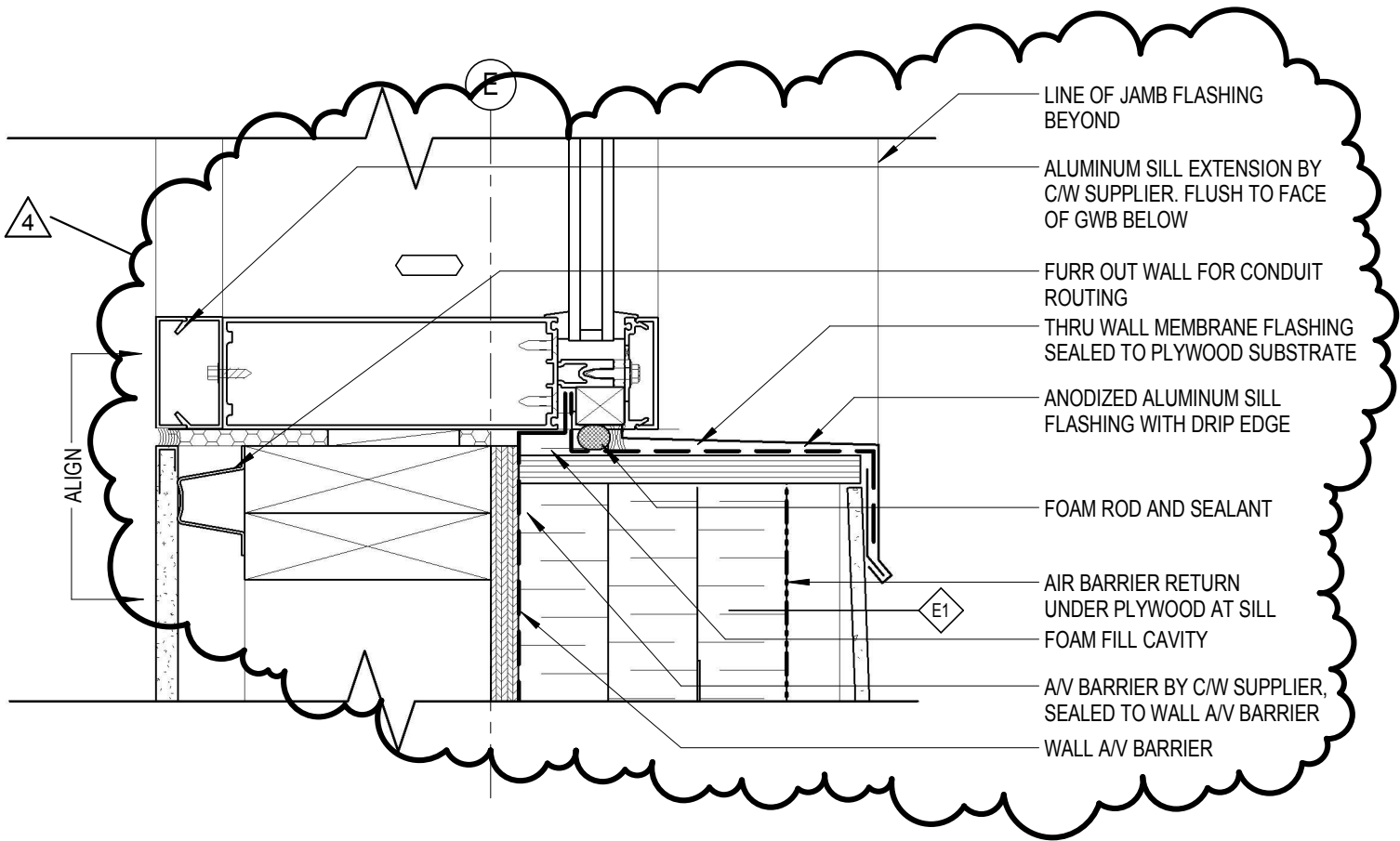
in association with:

KMBR ARCHITECTS PLANNERS INC
 1788 WEST 8TH AVENUE
 VANCOUVER, BRITISH COLUMBIA V6J 1V6
 t 604 732 3361 f 604 732 1828 www.kmbr.com

JOB: 12169
INGONISH CIVIC BUILDING
 INGONISH, NS

Partial Sheet 351
Detail 4 - Revisions

DRAWN BY: CH	SCALE: 1 : 4
CHECKED BY: PC	DATE: 2014.08.21
SHEET: ASK.18	REVISION:



DSRA
 5495 SPRING GARDEN ROAD - 4th FLOOR
 HALIFAX, NS B3J 1G2
 1 902 420 9990 f 902 420 9450 www.dsra.ca

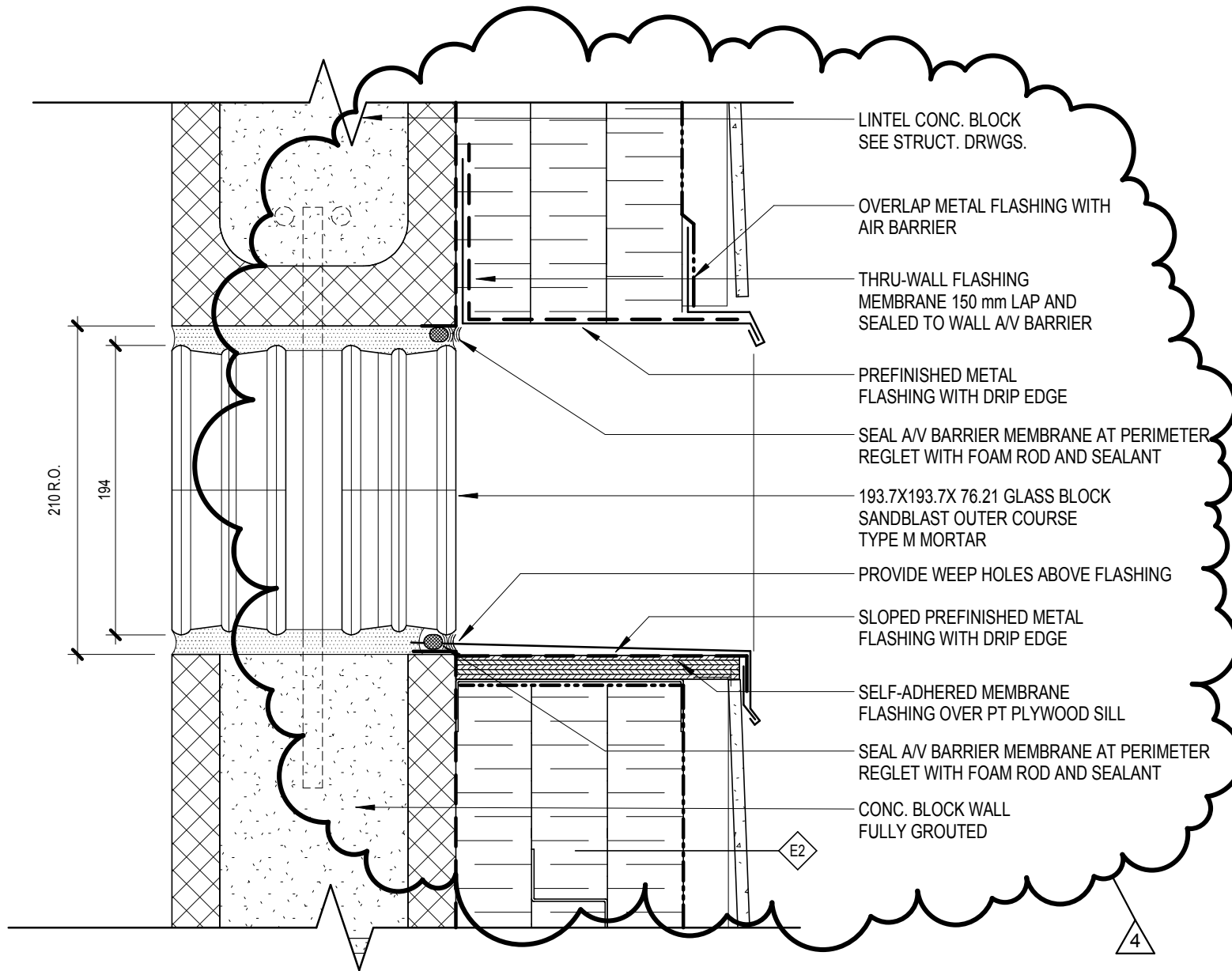
in association with:

KMBR ARCHITECTS PLANNERS INC
 1788 WEST 8TH AVENUE
 VANCOUVER, BRITISH COLUMBIA V6J 1V6
 1 604 732 3361 f 604 732 1828 www.kmbr.com

JOB: 12169
INGONISH CIVIC BUILDING
 INGONISH, NS

Partial Sheet 351
Detail 5 - Revisions

DRAWN BY: CH	SCALE: 1 : 4
CHECKED BY: PC	DATE: 2014.08.21
SHEET: ASK.19	REVISION:



DSRA 5495 SPRING GARDEN ROAD - 4th FLOOR
 HALIFAX, NS B3J 1G2
 t 902 420 9990 f 902 420 9450 www.dsra.ca

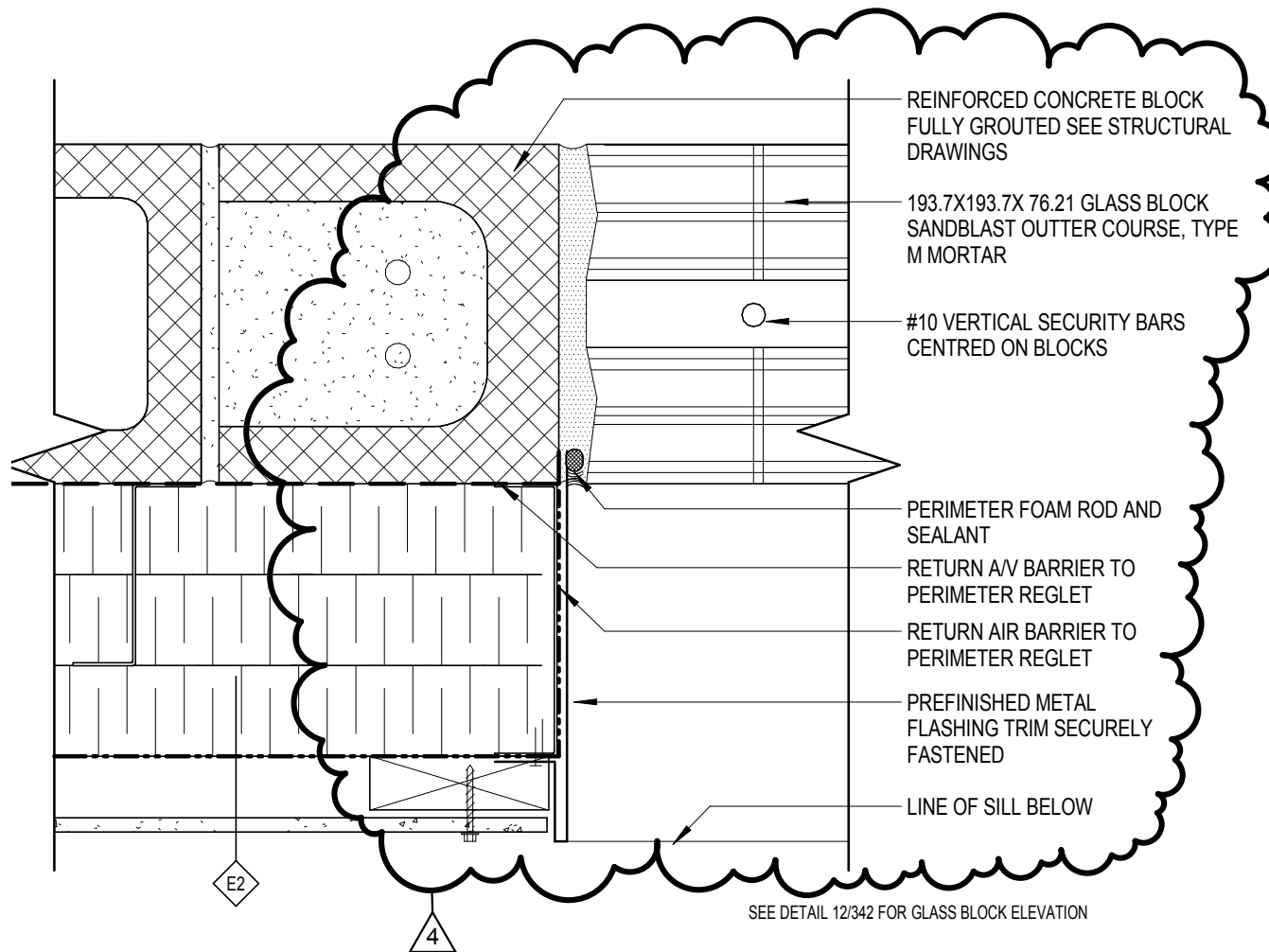
in association with:

KMBR ARCHITECTS PLANNERS INC
 1788 WEST 8TH AVENUE
 VANCOUVER, BRITISH COLUMBIA V6J 1V6
 t 604 732 3361 f 604 732 1828 www.kmbr.com

JOB: 12169
INGONISH CIVIC BUILDING
 INGONISH, NS

Partial Sheet 351
Detail 7 - Revisions

DRAWN BY: CH	SCALE: 1 : 4
CHECKED BY: PC	DATE: 2014.08.21
SHEET: ASK.20	REVISION:



DSRA 5495 SPRING GARDEN ROAD - 4th FLOOR
 HALIFAX, NS B3J 1G2
 t 902 420 9990 f 902 420 9450 www.dsra.ca

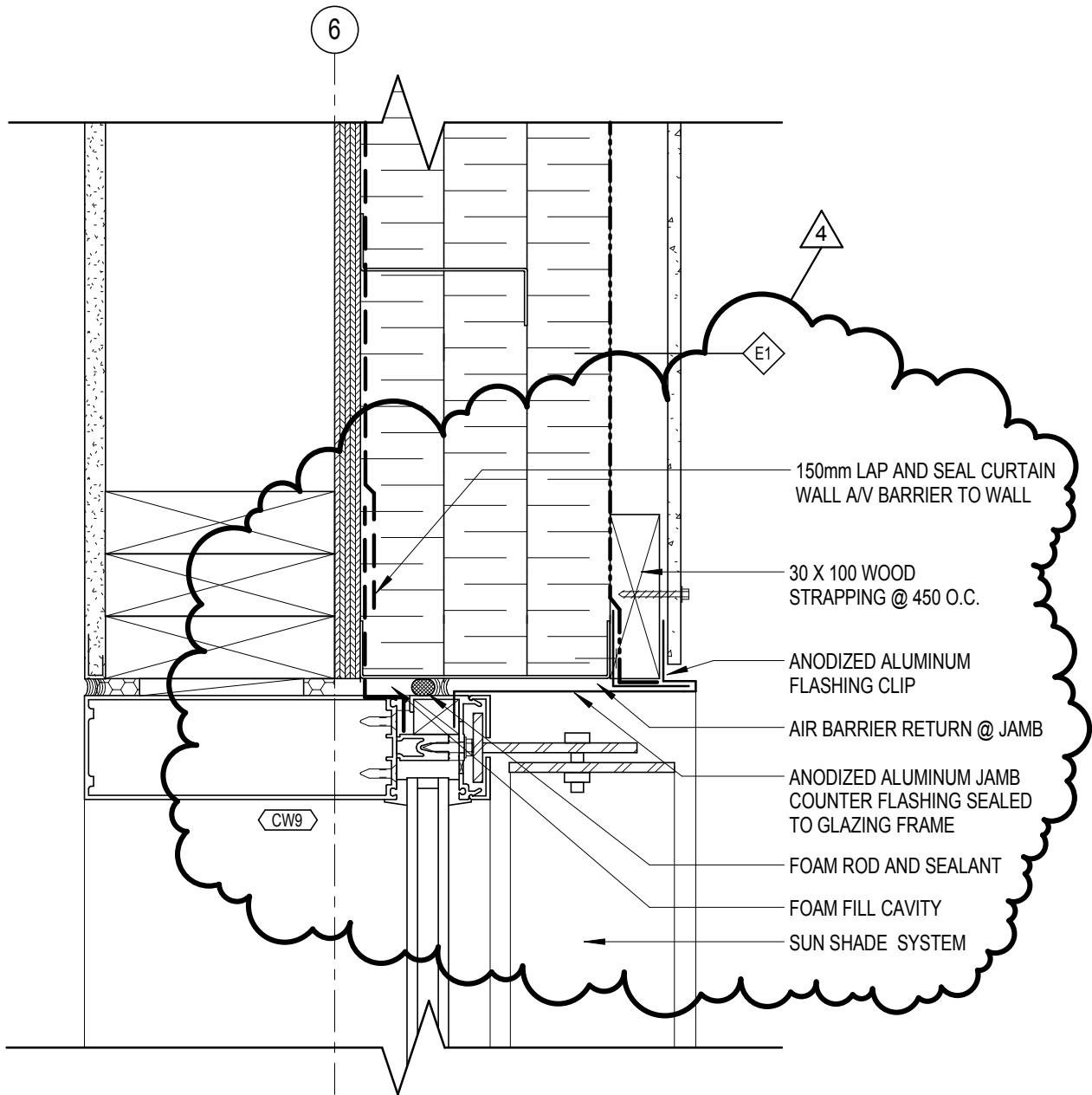
in association with:

KMBR ARCHITECTS PLANNERS INC
 1788 WEST 8TH AVENUE
 VANCOUVER, BRITISH COLUMBIA V6J 1V6
 t 604 732 3361 f 604 732 1828 www.kmbr.com

JOB: 12169
INGONISH CIVIC BUILDING
 INGONISH, NS

Partial Sheet 351
Detail 3 - Revisions

DRAWN BY: CH	SCALE: 1 : 4
CHECKED BY: PC	DATE: 2014.08.21
SHEET: ASK.21	REVISION:



DSRA
 5495 SPRING GARDEN ROAD - 4th FLOOR
 HALIFAX, NS B3J 1G2
 T 902 420 9990 F 902 420 9450 www.dsra.ca

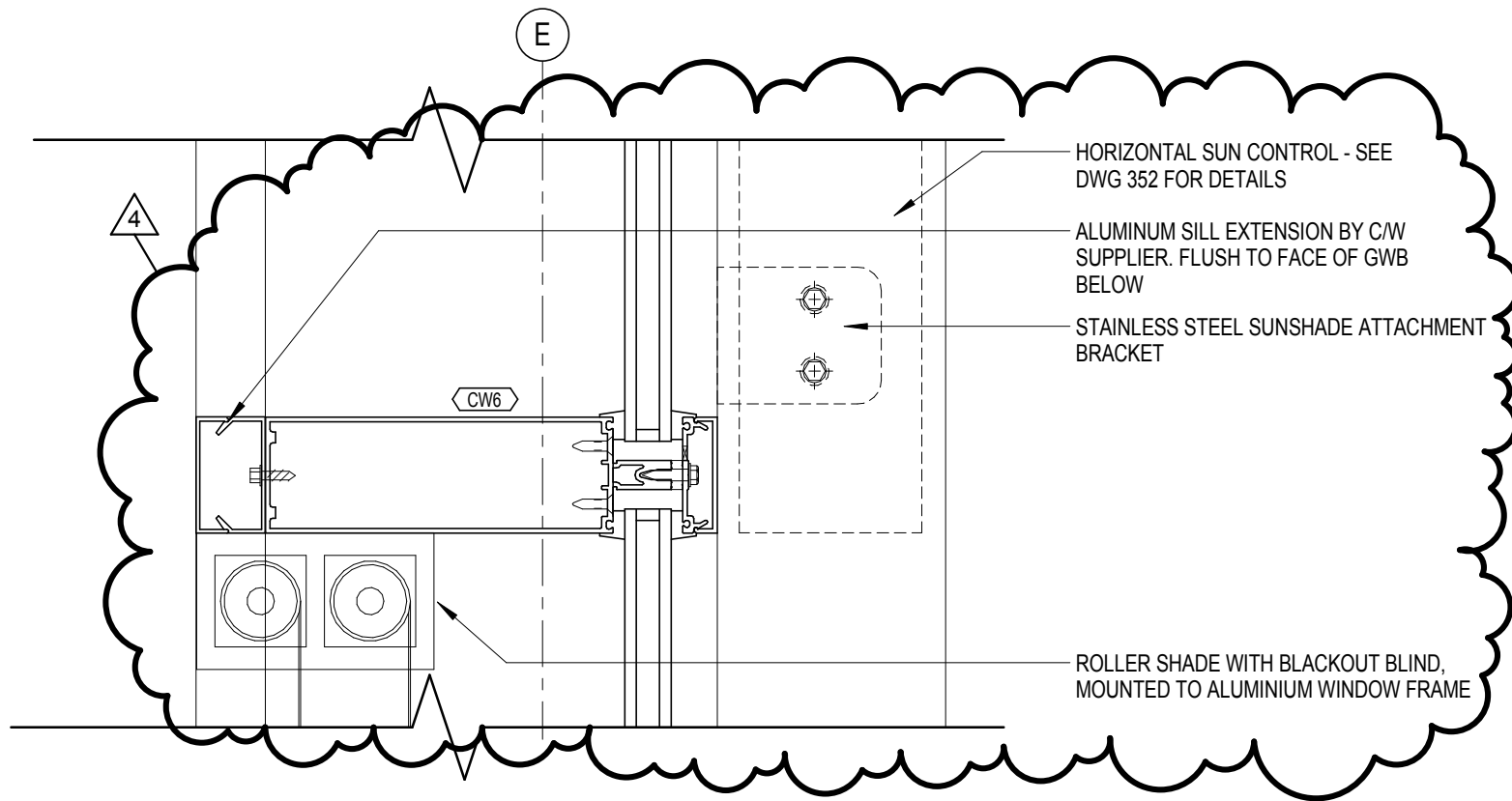
in association with:

KMBR ARCHITECTS PLANNERS INC
 1788 WEST 8TH AVENUE
 VANCOUVER, BRITISH COLUMBIA V6J 1V6
 T 604 732 3361 F 604 732 1828 www.kmbr.com

JOB: 12169
INGONISH CIVIC BUILDING
 INGONISH, NS

Partial Sheet 351
Detail 8 - Revisions

DRAWN BY: CH	SCALE: 1 : 4
CHECKED BY: PC	DATE: 2014.08.21
SHEET: ASK.22	REVISION:



DSRA

5495 SPRING GARDEN ROAD - 4th FLOOR
 HALIFAX, NS B3J 1G2
 t 902 420 9990 f 902 420 9450 www.dsra.ca

in association with:

KMBR

ARCHITECTS PLANNERS INC
 1788 WEST 8TH AVENUE
 VANCOUVER, BRITISH COLUMBIA V6J 1V6
 t 604 732 3361 f 604 732 1828 www.kmbr.com

JOB: 12169

INGONISH CIVIC BUILDING

INGONISH, NS

**Partial Sheet 351
 Detail 6 - Revisions**

DRAWN BY: CH

SCALE: 1 : 4

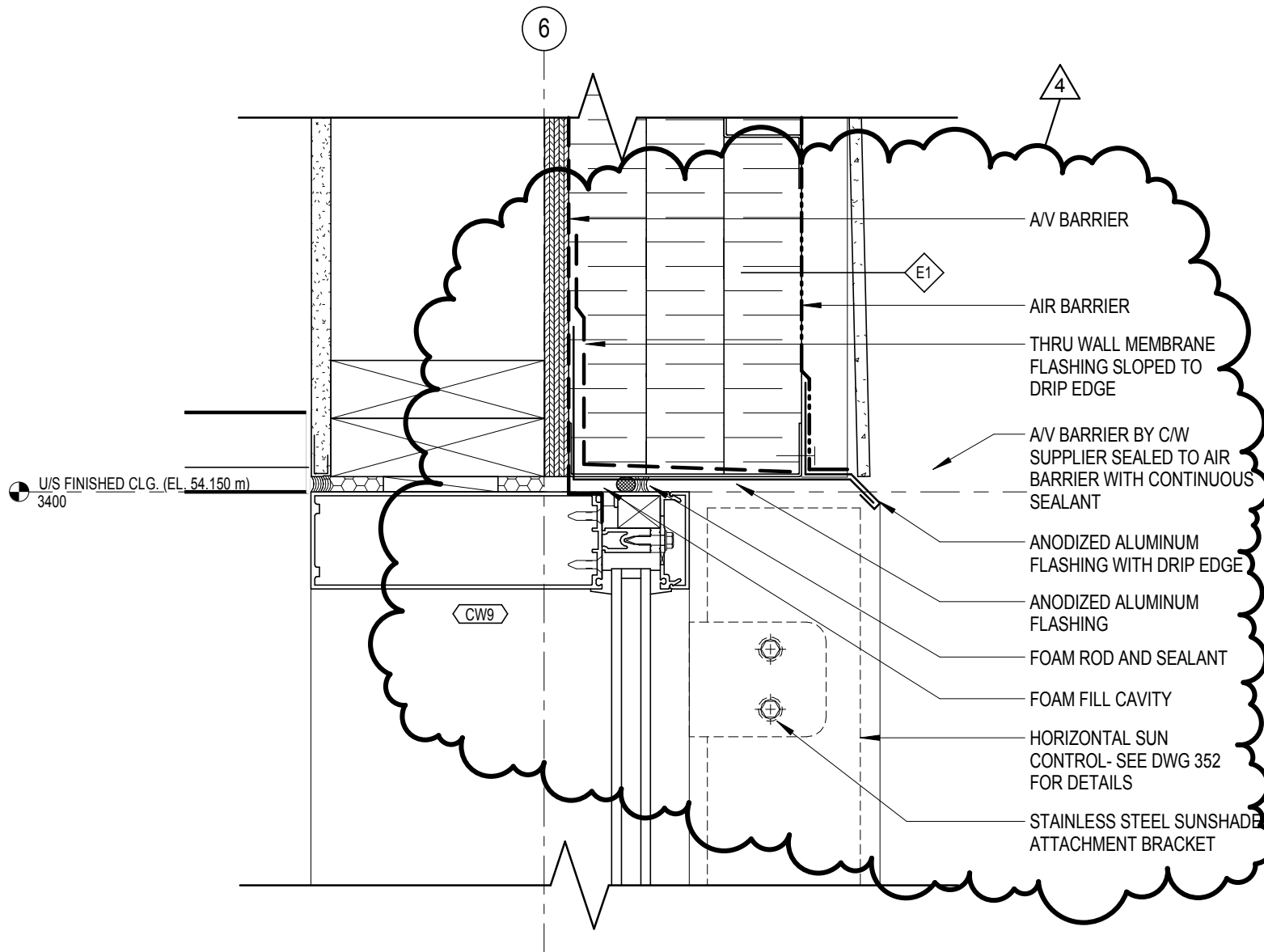
CHECKED BY: PC

DATE: 2014.08.21

SHEET:

REVISION:

ASK.23



DSRA 5495 SPRING GARDEN ROAD - 4th FLOOR
 HALIFAX, NS B3J 1G2
 t 902 420 9990 f 902 420 9450 www.dsra.ca

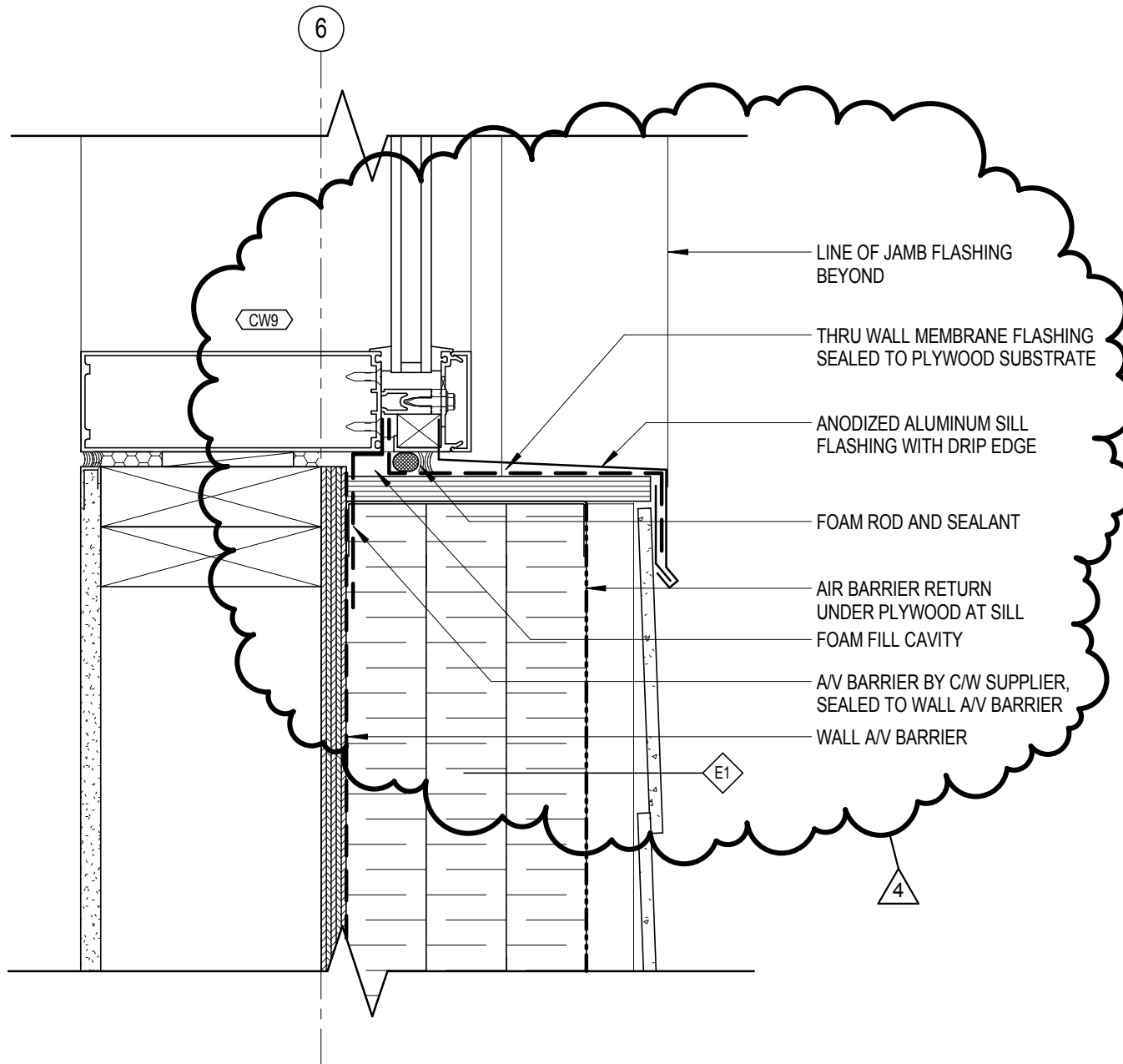
in association with:

KMBR ARCHITECTS PLANNERS INC
 1788 WEST 8TH AVENUE
 VANCOUVER, BRITISH COLUMBIA V6J 1V6
 t 604 732 3361 f 604 732 1828 www.kmbr.com

JOB: 12169
INGONISH CIVIC BUILDING
 INGONISH, NS

Partial Sheet 351
Detail 10 - Revisions

DRAWN BY: CH	SCALE: 1 : 4
CHECKED BY: PC	DATE: 2014.08.21
SHEET: ASK.24	REVISION:



DSRA 5495 SPRING GARDEN ROAD - 4th FLOOR
 HALIFAX, NS B3J 1G2
 t 902 420 9990 f 902 420 9450 www.dsra.ca

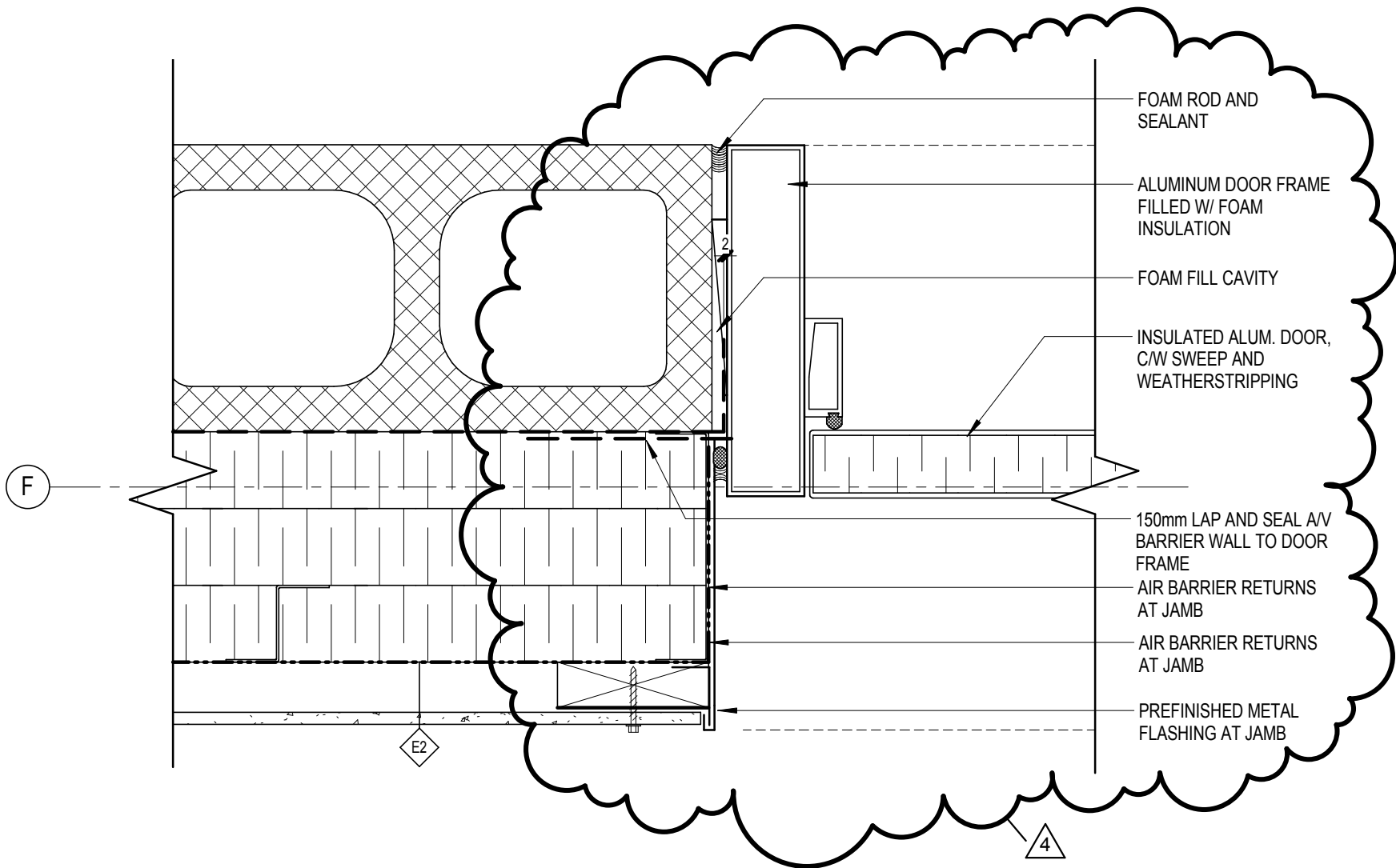
in association with:

KMBR ARCHITECTS PLANNERS INC
 1788 WEST 8TH AVENUE
 VANCOUVER, BRITISH COLUMBIA V6J 1V6
 t 604 732 3361 f 604 732 1828 www.kmbr.com

JOB: 12169
INGONISH CIVIC BUILDING
 INGONISH, NS

Partial Sheet 351
Detail 9 - Revisions

DRAWN BY: CH	SCALE: 1 : 4
CHECKED BY: PC	DATE: 2014.08.21
SHEET: ASK.25	REVISION:



- FOAM ROD AND SEALANT
- ALUMINUM DOOR FRAME FILLED W/ FOAM INSULATION
- FOAM FILL CAVITY
- INSULATED ALUM. DOOR, C/W SWEEP AND WEATHERSTRIPPING
- 150mm LAP AND SEAL A/V BARRIER WALL TO DOOR FRAME
- AIR BARRIER RETURNS AT JAMB
- AIR BARRIER RETURNS AT JAMB
- PREFINISHED METAL FLASHING AT JAMB

DSRA 5495 SPRING GARDEN ROAD - 4th FLOOR
 HALIFAX, NS B3J 1G2
 1 902 420 9990 f 902 420 9450 www.dsra.ca

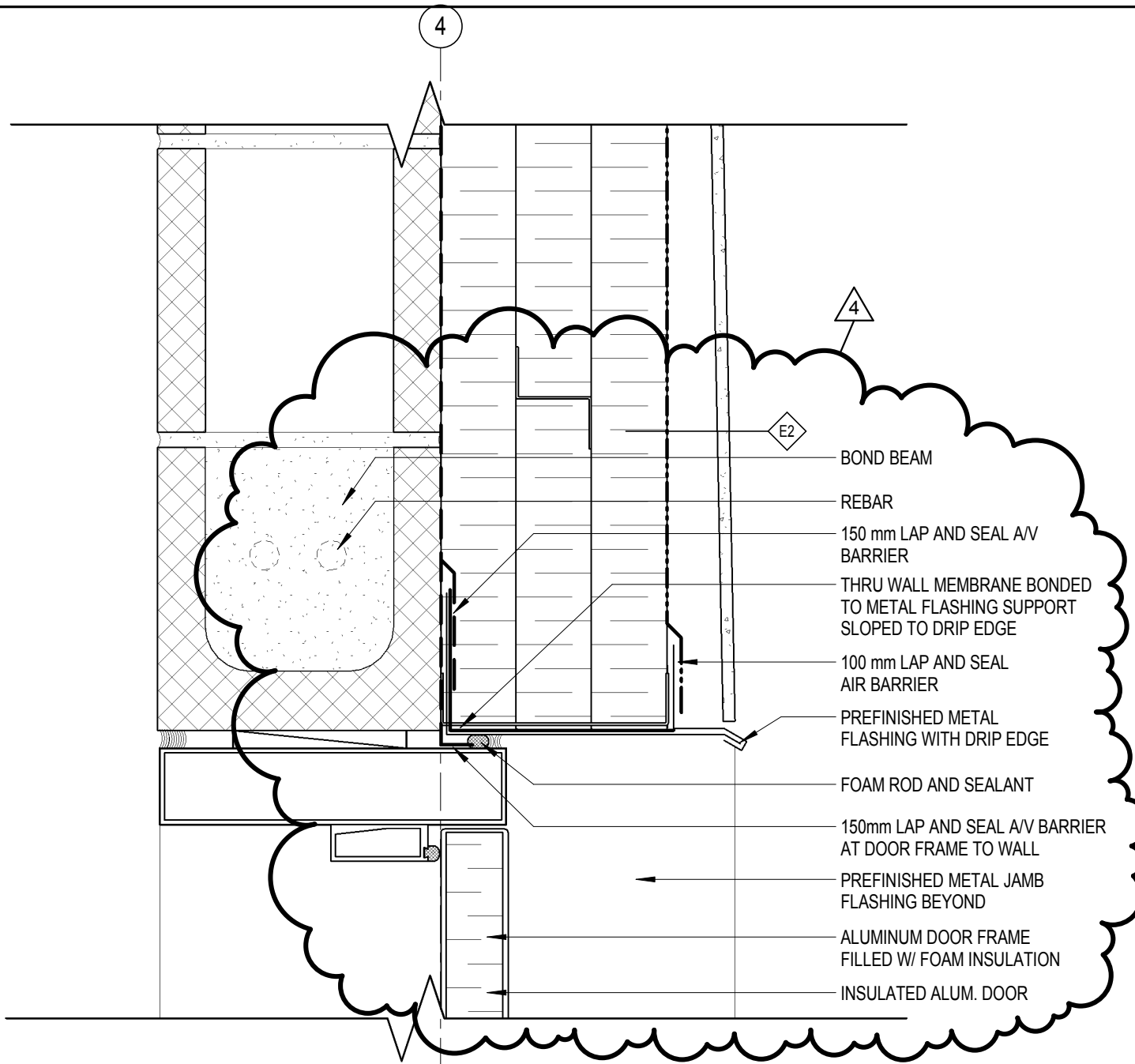
in association with:

KMBR ARCHITECTS PLANNERS INC
 1788 WEST 8TH AVENUE
 VANCOUVER, BRITISH COLUMBIA V6J 1V6
 1 604 732 3361 f 604 732 1828 www.kmbr.com

JOB: 12169
INGONISH CIVIC BUILDING
 INGONISH, NS

Partial Sheet 361
Detail 4 - Revisions

DRAWN BY: CH	SCALE: 1 : 4
CHECKED BY: PC	DATE: 2014.08.21
SHEET: ASK.26	REVISION:



- BOND BEAM
- REBAR
- 150 mm LAP AND SEAL A/V BARRIER
- THRU WALL MEMBRANE BONDED TO METAL FLASHING SUPPORT SLOPED TO DRIP EDGE
- 100 mm LAP AND SEAL AIR BARRIER
- PREFINISHED METAL FLASHING WITH DRIP EDGE
- FOAM ROD AND SEALANT
- 150mm LAP AND SEAL A/V BARRIER AT DOOR FRAME TO WALL
- PREFINISHED METAL JAMB FLASHING BEYOND
- ALUMINUM DOOR FRAME FILLED W/ FOAM INSULATION
- INSULATED ALUM. DOOR

DSRA 5495 SPRING GARDEN ROAD - 4th FLOOR
 HALIFAX, NS B3J 1G2
 t 902 420 9990 f 902 420 9450 www.dsra.ca

in association with:

KMBR ARCHITECTS PLANNERS INC
 1788 WEST 8TH AVENUE
 VANCOUVER, BRITISH COLUMBIA V6J 1V6
 t 604 732 3361 f 604 732 1828 www.kmbr.com

JOB: 12169
INGONISH CIVIC BUILDING
 INGONISH, NS

Partial Sheet 361 Detail 6 - Revisions

DRAWN BY: CH	SCALE: 1 : 4		
CHECKED BY: PC	DATE: 2014.08.21		
SHEET: ASK.27		REVISION:	

6

150mm LAP AND SEAL
AV BARRIER WALL TO
DOOR FRAME

E1

LAP AIR BARRIER
OVER FLASHING

THRU WALL MEMBRANE
FLASHING ON METAL
SUPPORT

U/S FINISHED CLG. (EL. 54.150 m)
3400

PREFINISHED METAL
FLASHING WITH DRIP EDGE

FOAM ROD AND SEALANT

WOOD STUD HEADER

SEALANT

FOAM FILL CAVITY

ALUMINUM DOOR
FRAME FILLED W/ FOAM
INSULATION

GLAZING

ALUMINUM DOOR
FRAME WITH TRANSOM

INSULATED ALUMINUM
DOOR, C/W SWEEP AND
WEATHERSTRIPPING

DSRA

5495 SPRING GARDEN ROAD - 4th FLOOR
HALIFAX, NS B3J 1G2
f 902 420 9990 f 902 420 9450 www.dsra.ca

in association with:

KMBR

ARCHITECTS PLANNERS INC
1788 WEST 8TH AVENUE
VANCOUVER, BRITISH COLUMBIA V6J 1V6
f 604 732 3361 f 604 732 1828 www.kmbr.com

JOB: 12169

INGONISH CIVIC BUILDING

INGONISH, NS

Partial Sheet 361 Detail 3 - Revisions

DRAWN BY: CH

SCALE: 1 : 4

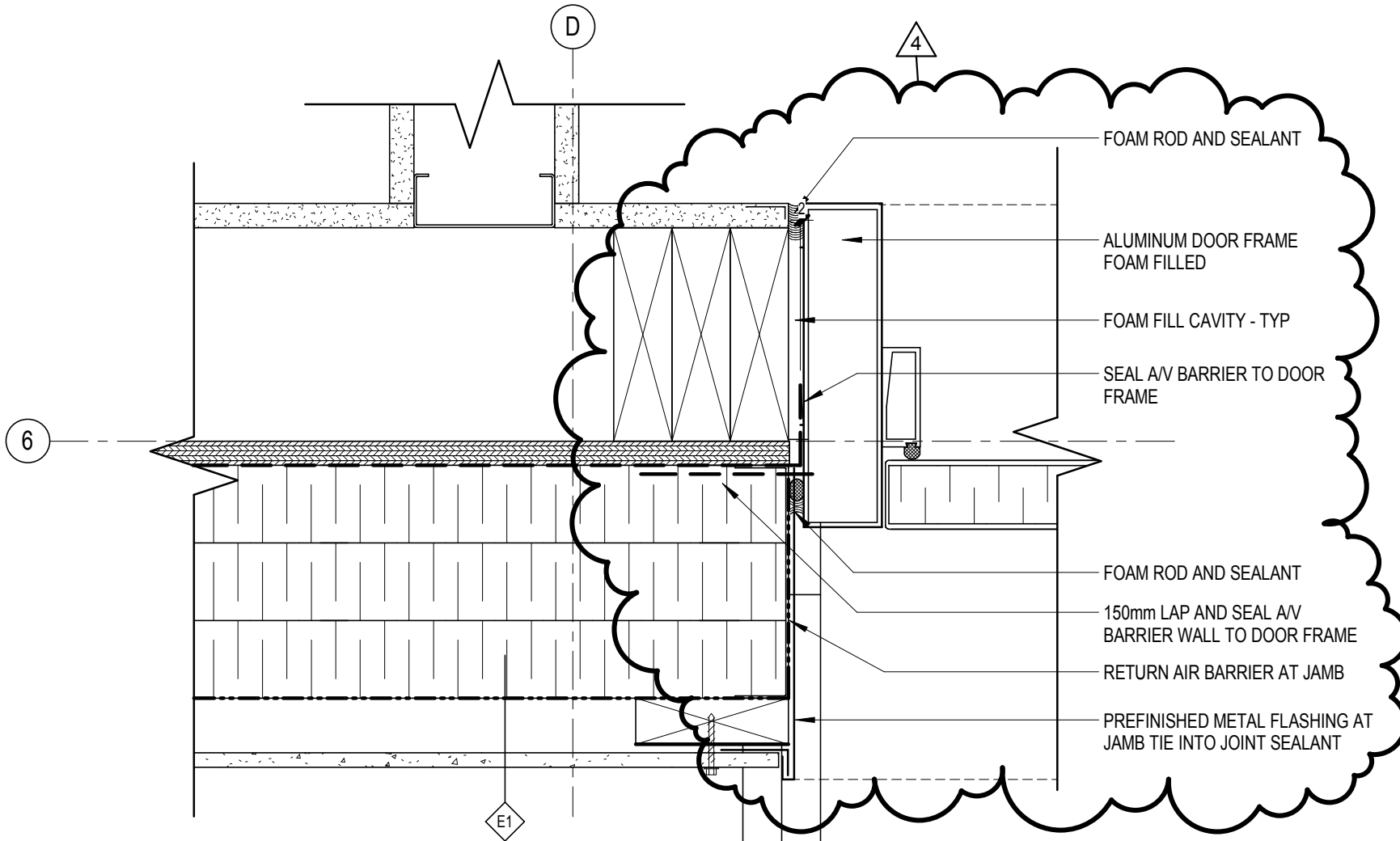
CHECKED BY: PC

DATE: 2014.08.21

SHEET:

REVISION:

ASK.28



FOAM ROD AND SEALANT

ALUMINUM DOOR FRAME
FOAM FILLED

FOAM FILL CAVITY - TYP

SEAL A/V BARRIER TO DOOR
FRAME

FOAM ROD AND SEALANT

150mm LAP AND SEAL A/V
BARRIER WALL TO DOOR FRAME

RETURN AIR BARRIER AT JAMB

PREFINISHED METAL FLASHING AT
JAMB TIE INTO JOINT SEALANT

DSRA 5495 SPRING GARDEN ROAD - 4th FLOOR
HALIFAX, NS B3J 1G2
t 902 420 9990 f 902 420 9450 www.dsra.ca

in association with:

KMBR ARCHITECTS PLANNERS INC
1788 WEST 8TH AVENUE
VANCOUVER, BRITISH COLUMBIA V6J 1V6
t 604 732 3361 f 604 732 1828 www.kmbr.com

JOB: 12169
INGONISH CIVIC BUILDING

INGONISH, NS

Partial Sheet 361
Detail 1 - Revisions

DRAWN BY: CH	SCALE: 1 : 4
CHECKED BY: PC	DATE: 2014.08.21
SHEET: ASK.29	REVISION: