

Public Works  
Government Services  
Canada

Architectural and  
Engineering Services

Ontario Region

Travaux publics  
Services gouvernementaux  
Canada

Services d'architecture  
et de génie

Région de l'Ontario

BURLINGTON, ONTARIO.

CANADA CENTRE FOR INLAND WATERS – CCIW

867 LAKESHORE ROAD, BURLINGTON ON, L7R 4A6

METAL CLADDING REPLACEMENT

PWGSC Proj. No.: CCIW-004-J2959

BOILER ROOM WALL  
DOOR C  
SERVICE CORRIDOR AND MECHANICAL  
PENTHOUSE

DOOR B  
DOOR A



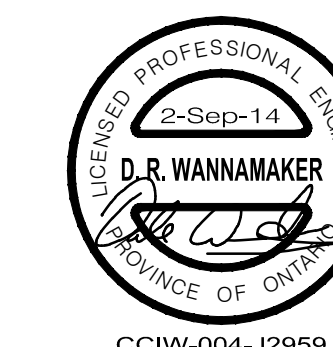
SITE PLAN

## LIST OF DRAWINGS

A-1 COVER SHEET AND SITE PLAN  
A-2 BUILDING PLANS AND ELEVATIONS  
A-3 PROJECT DETAILS

KEY PLAN

Public Works and  
Government Services Canada  
Travaux publics et  
Services gouvernementaux Canada



CCIW-004-J2959

04		
03		
02	REVISED FOR TENDER	02 Sep. 2014
01	ISSUED FOR TENDER	15 May 2014
revision		date

Do not scale drawings.  
Verify all dimensions and conditions on site and immediately  
notify the Departmental Representative of all discrepancies.

A	Detail No.
B	No. du détail
C	drawing no. – where detail required dessin no. – où détail exigé
C	drawing no. – where detailed dessin no. – où détaillé

project title  
titre du projet  
BURLINGTON Ontario  
CANADA CENTRE FOR INLAND WATERS  
867 LAKESHORE ROAD

METAL CLADDING REPLACEMENT

drawing title  
titre du dessin  
COVER SHEET  
SITE PLAN

drawn by  
dessiné par  
SGU

designed by  
conçu par  
GJM

approved by  
approuvé par  
EC

by  
offre  
project manager  
administrateur  
de projets  
A.M.

project date  
date du projet  
2014-05-15

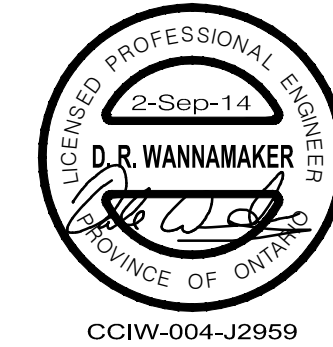
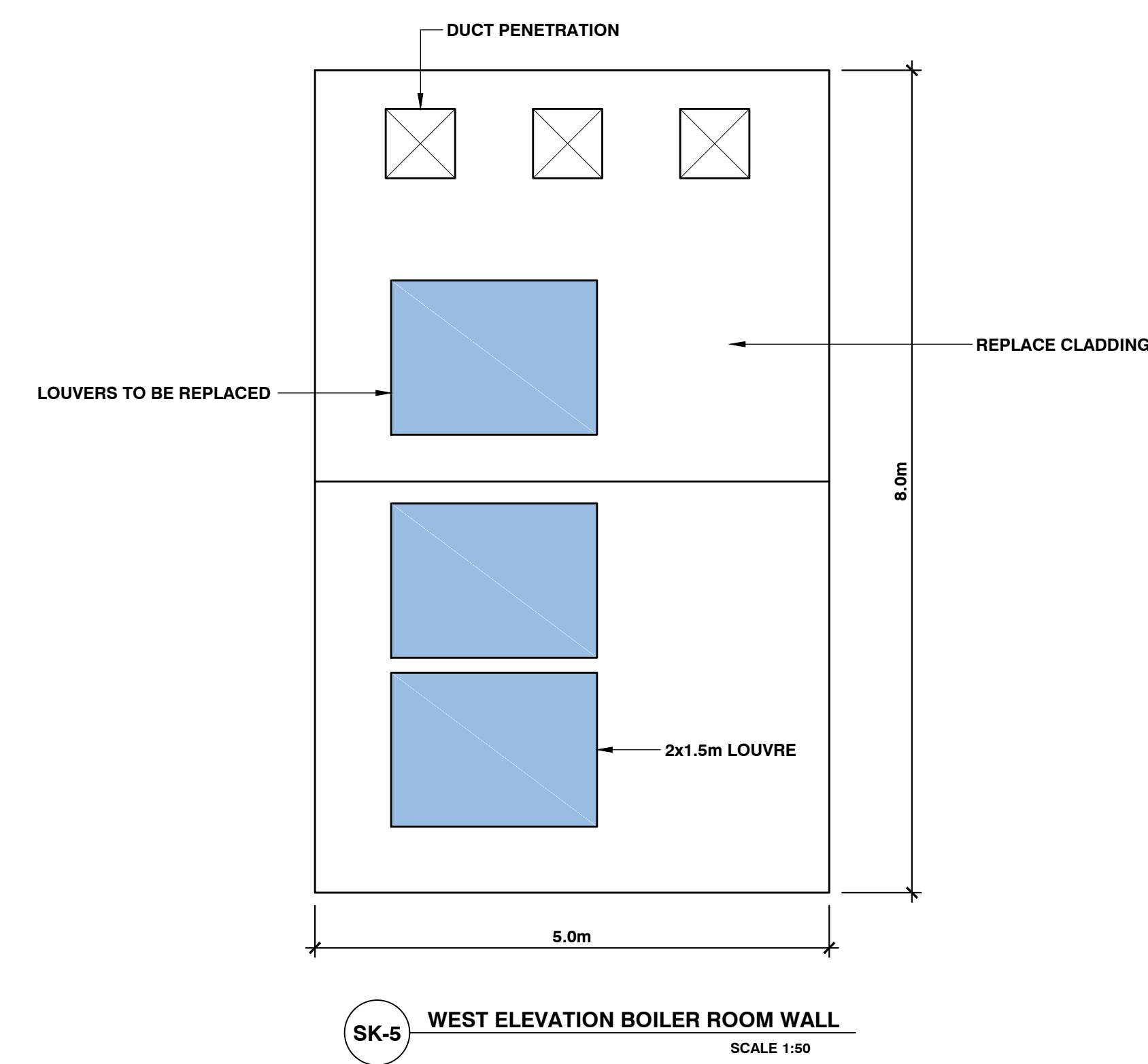
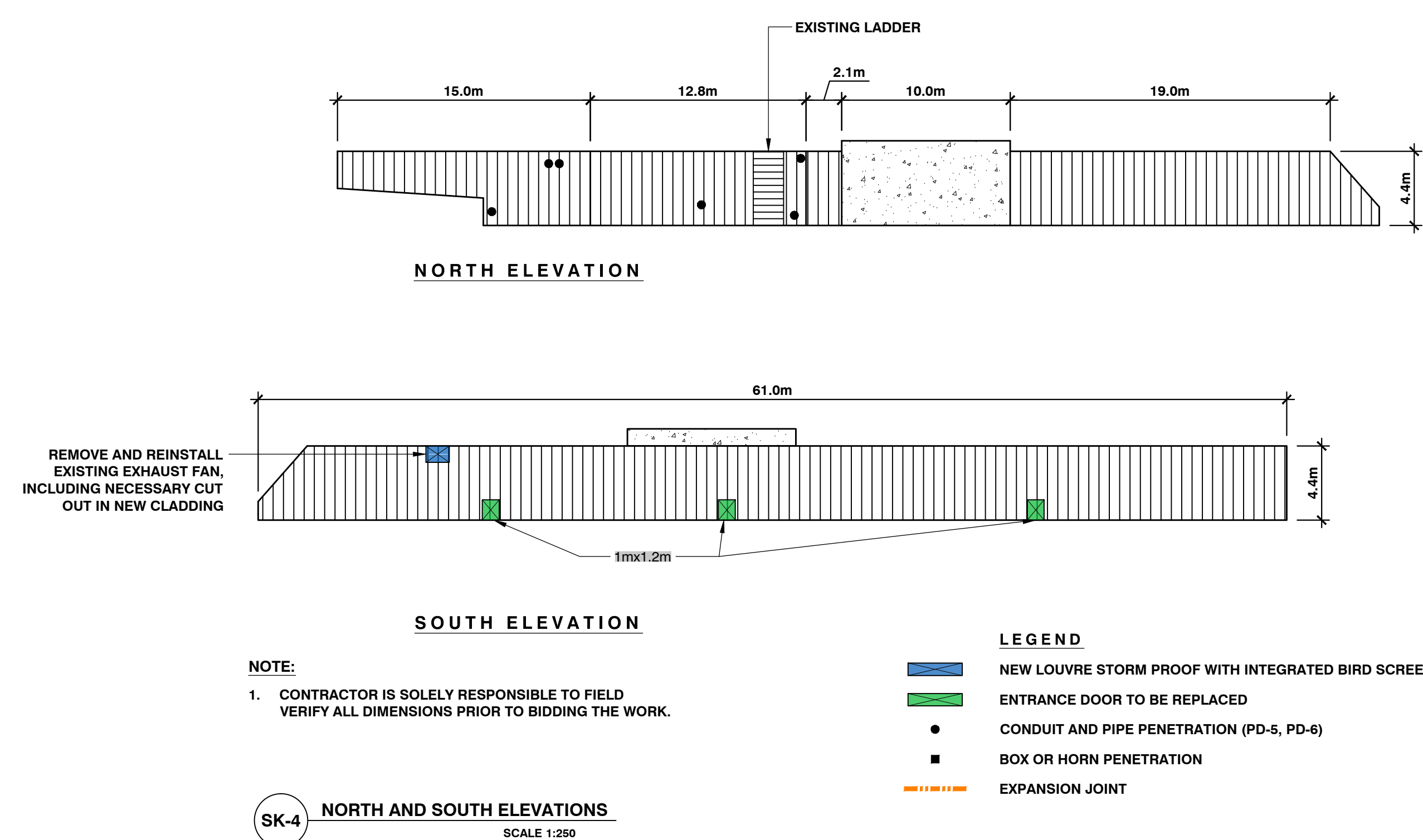
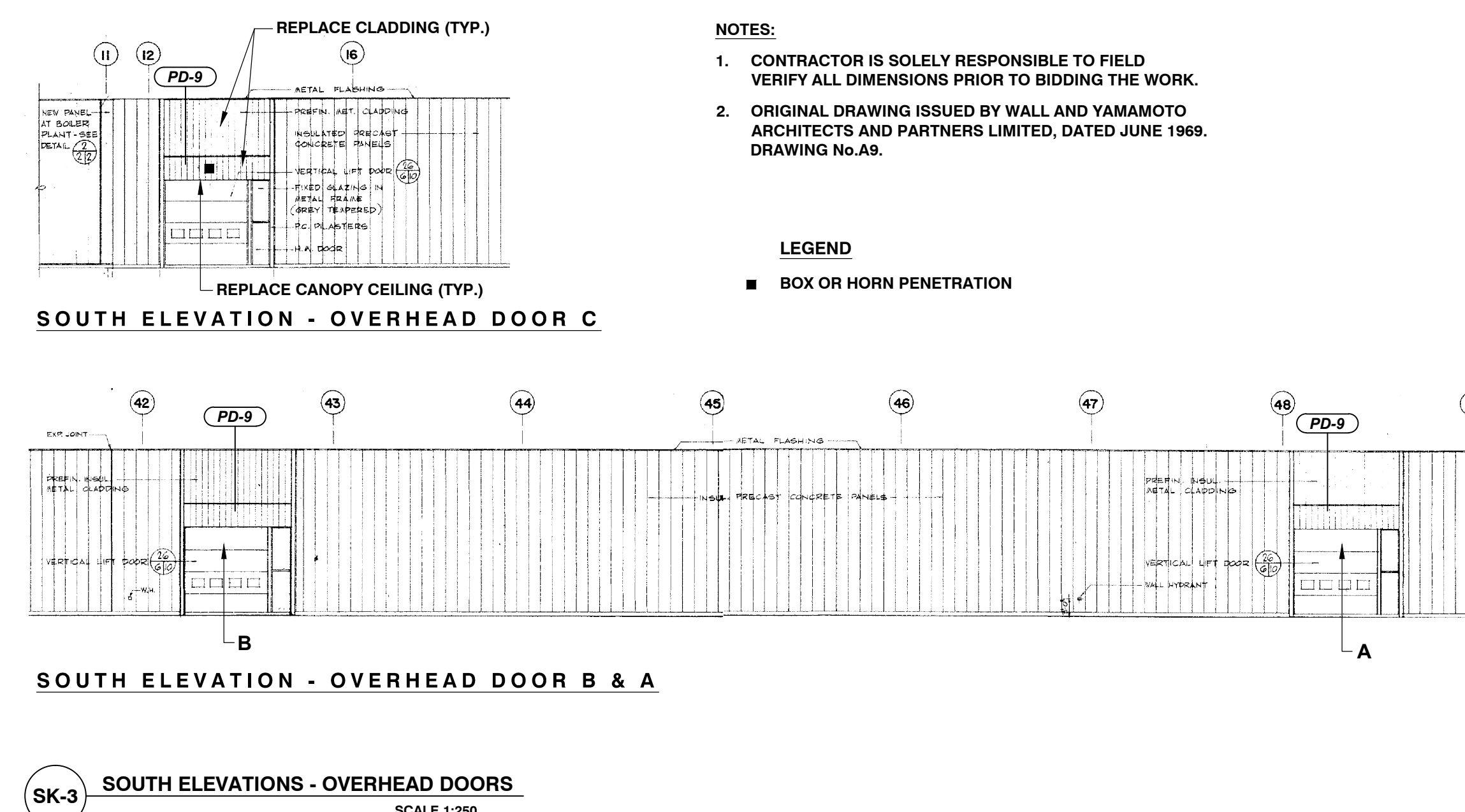
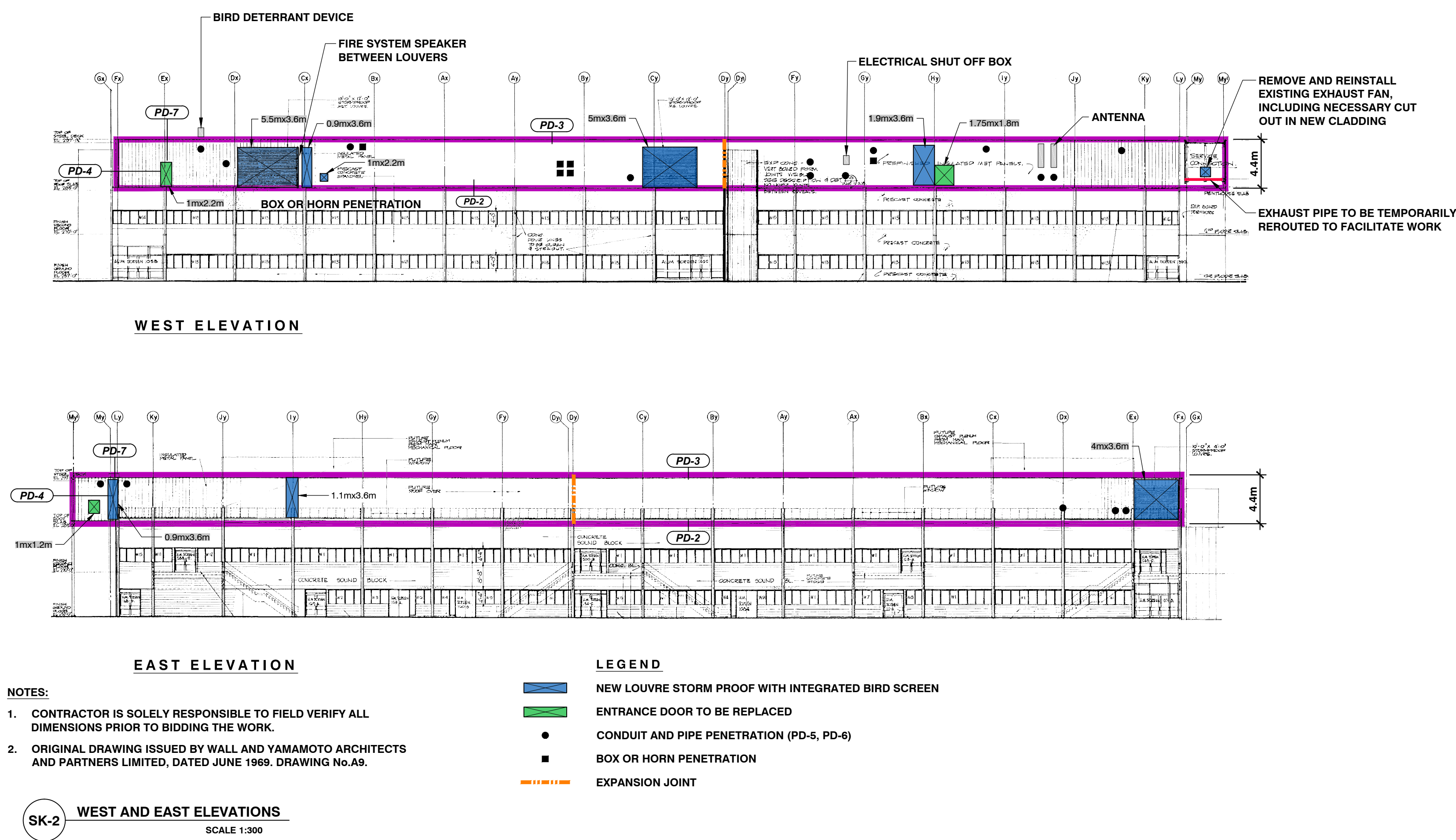
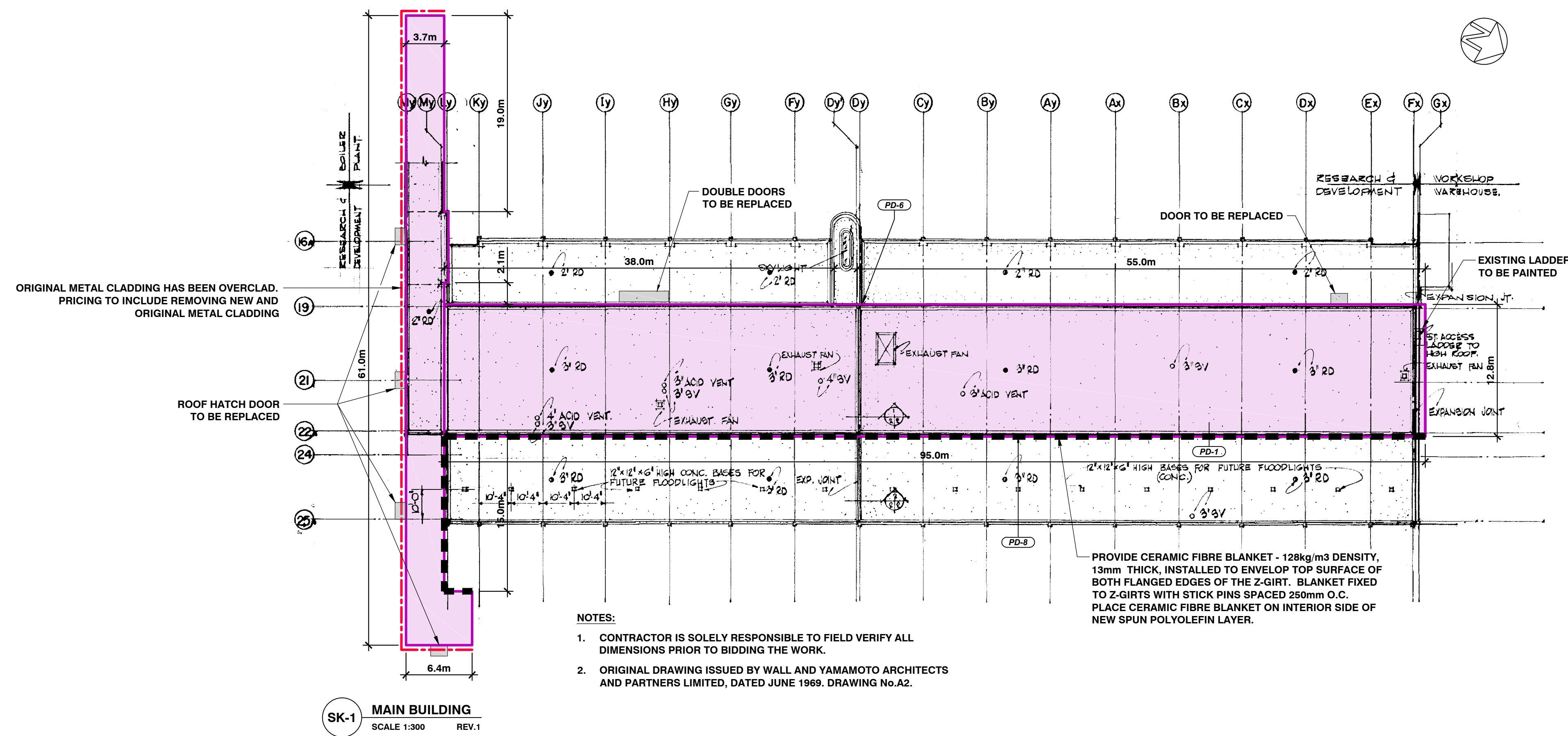
project no.  
no. du projet  
CCIW-004-J2959

drawing no.  
dessiné no.  
A-1

Canada

**Halsall**

50 Leek Crescent,  
Suite 101  
Richmond Hill, Ontario, Canada L4B 4J3  
t. 416.487.5256  
1.888. HALLSALL  
F. 416.487.5766  
www.hallsall.com



CCIW-004-J2959

04		
03		
02	REVISED FOR TENDER	02 Sep. 2014
01	ISSUED FOR TENDER	15 May 2014
revision		date

Do not scale drawings.  
Verify all dimensions and conditions on site and immediately  
notify the Departmental Representative of all discrepancies.

A	Detail No.
B	No. du détail
B/C	drawing no. - where detail required dessin no. - où détail requis
C	drawing no. - where detailed dessin no. - où détaillé

project title  
titre du projet  
BURLINGTON Ontario  
CANADA CENTRE FOR INLAND WATERS  
867 LAKESHORE ROAD

METAL CLADDING REPLACEMENT

drawing title  
titre du dessin  
BUILDING PLANS AND  
ELEVATIONS

drawn by  
dessiné par SGU

designed by  
conçu par GJM

approved by  
approuvé par EC

by  
offre project manager  
administrateur de projets A.M.

project date  
date du projet 2014-05-15

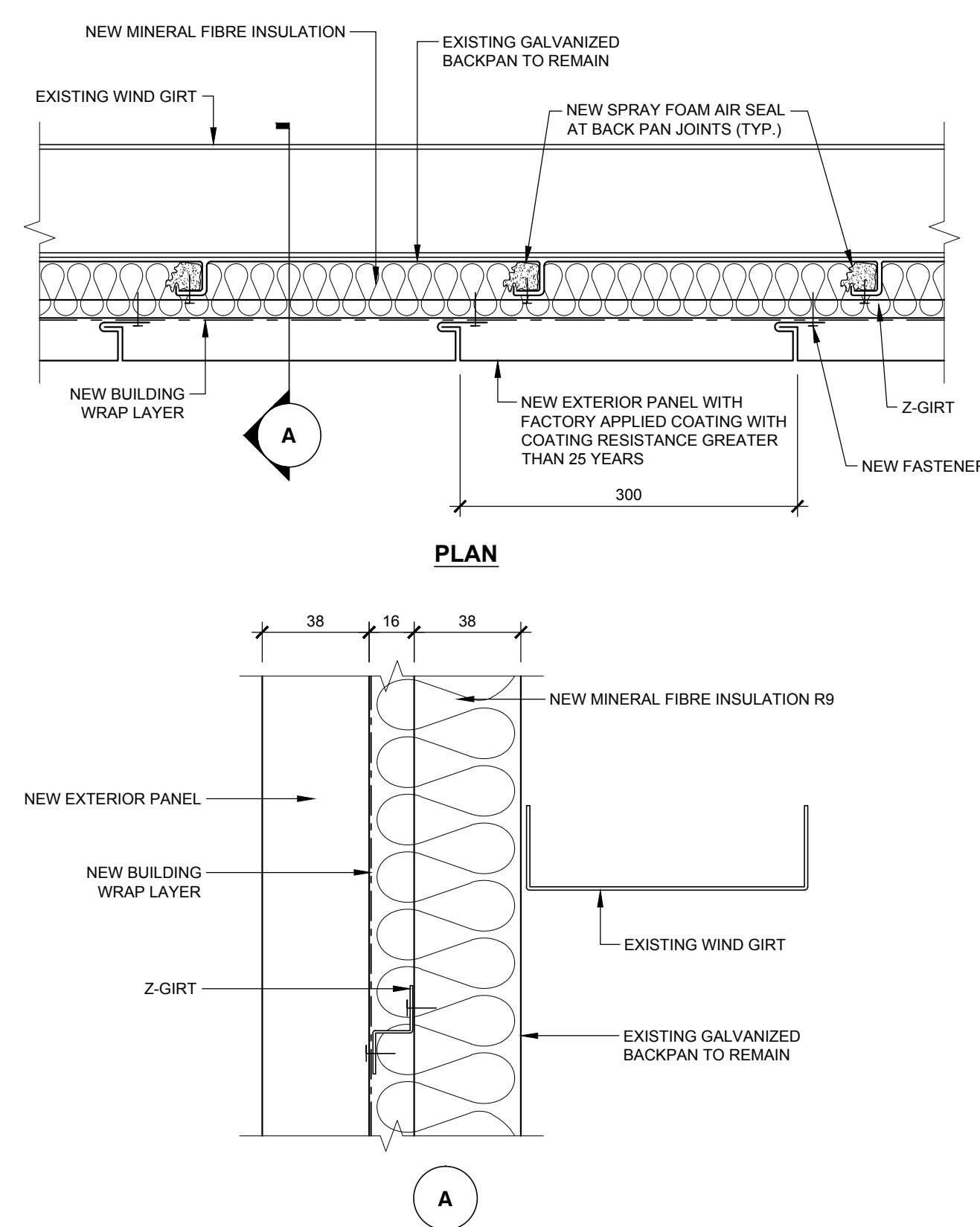
project no.  
no. du projet CCIW-004-J2959

drawing no.  
dessiné no. A-2

# Halsall

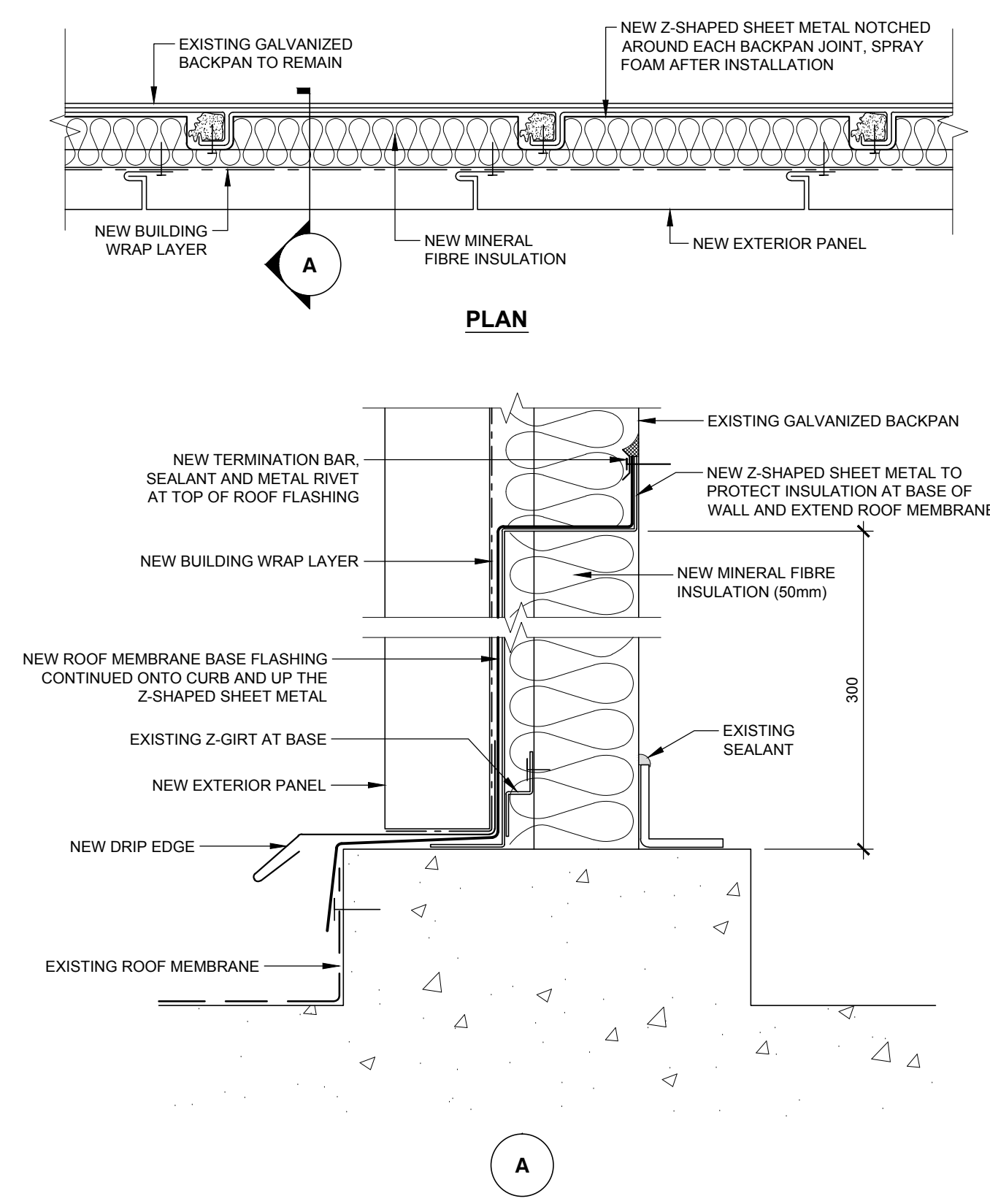
50 Leek Crescent,  
Suite 101  
Richmond Hill, Ontario, Canada  
L4B 4J3

t: 416.487.5258  
f: 596.841.5411  
t: 416.487.9766  
www.halsall.com

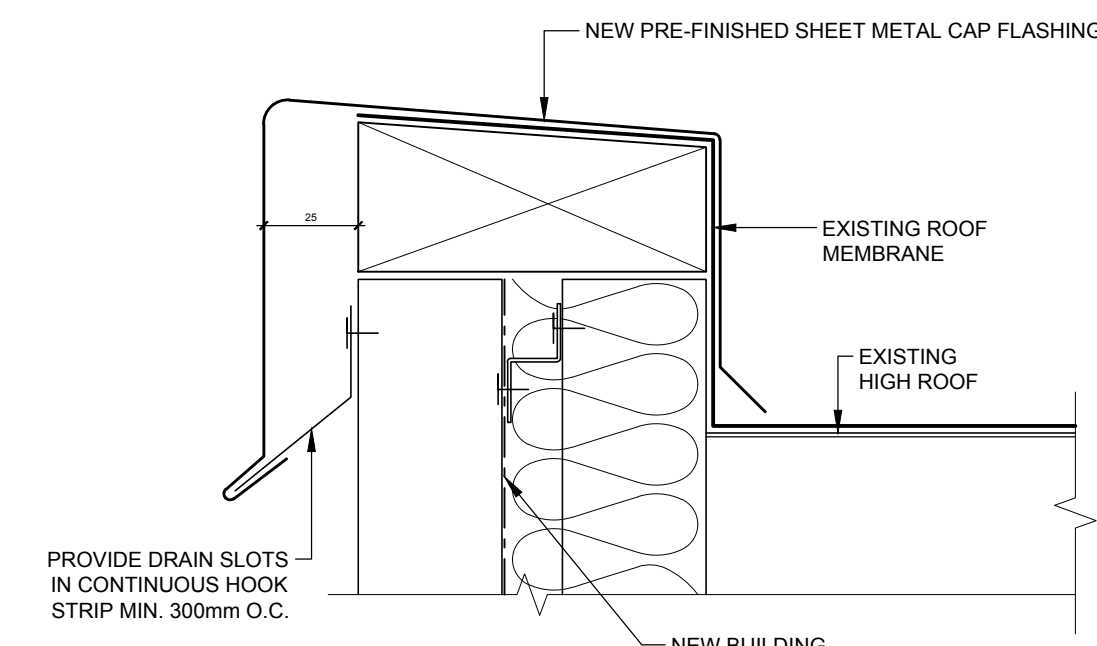


- NOTES:**
1. CONTRACTOR TO PROVIDE ENGINEERED SHOP DRAWINGS FOR NEW CLADDING SECUREMENT.
  2. ALL CLADDING TO RESIST WIND LOADS OF 1.86 kPa FOR BURLINGTON ONTARIO AS OUTLINED IN SECTION 07 46 19. PROVIDE ENGINEERED STAMPED SHOP DRAWINGS FOR REVIEW.

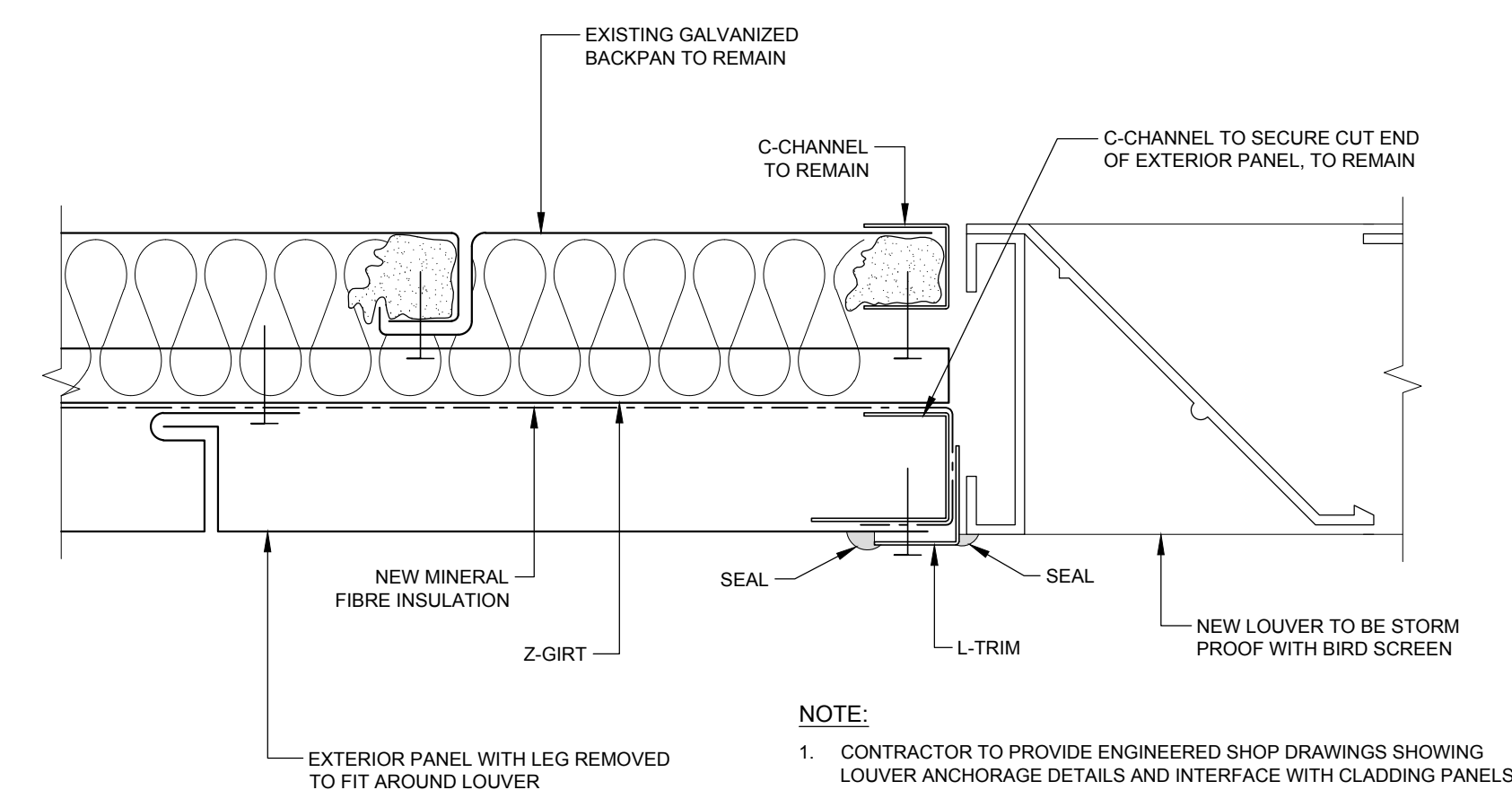
PD-1 TYPICAL WALL SECTION



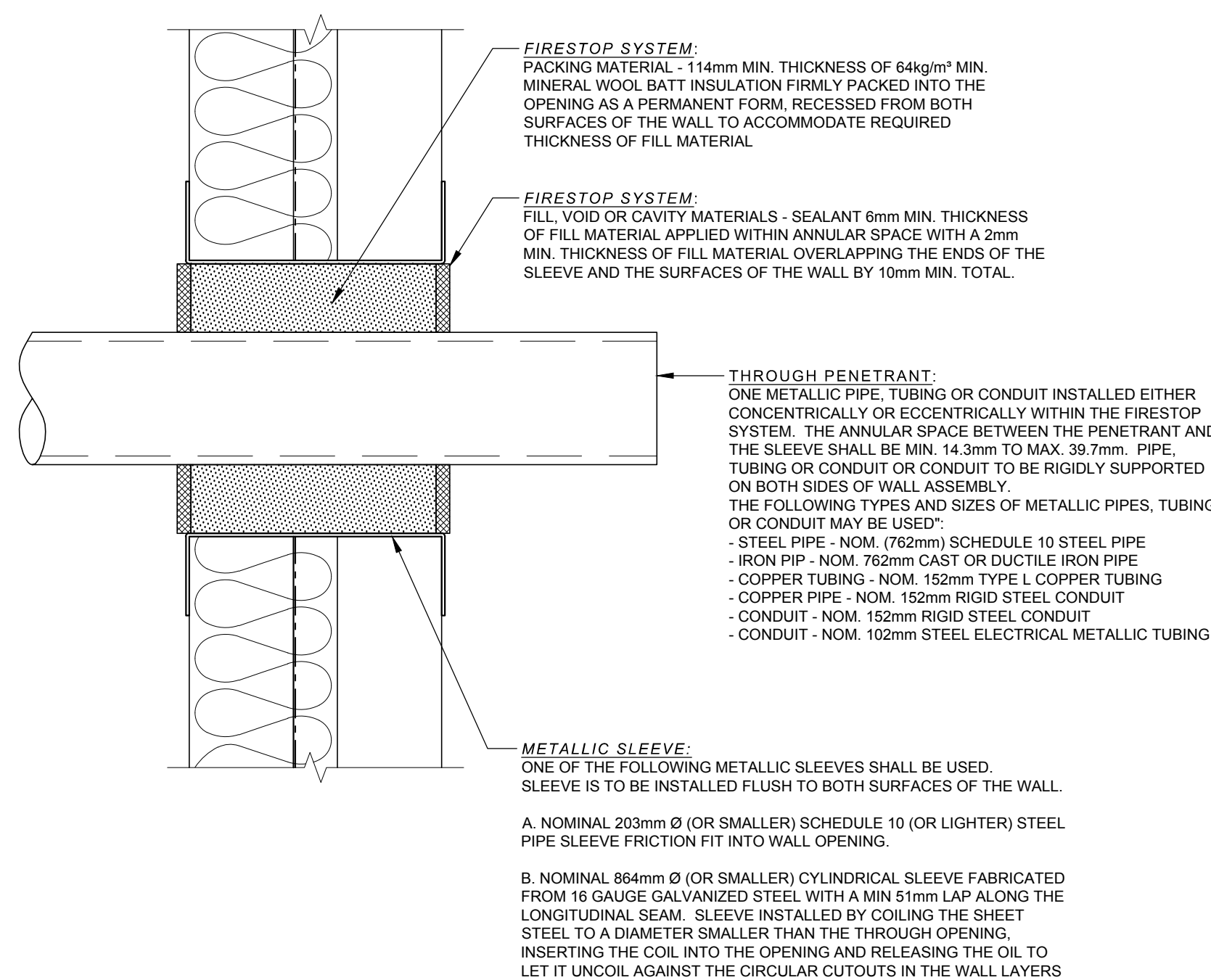
PD-2 SECTION AT BASE OF WALL WITH FOOTING



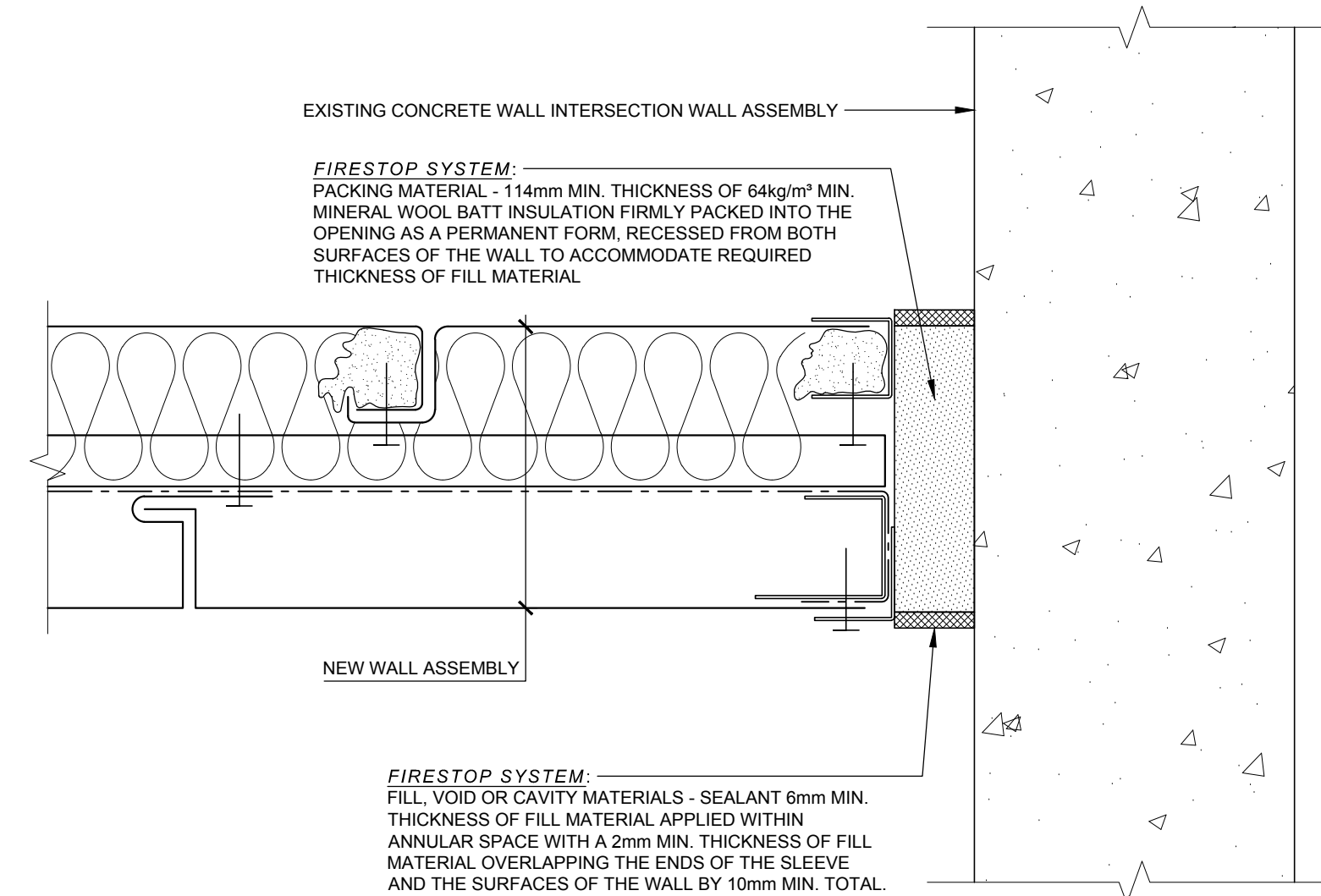
PD-3 SECTION AT TOP OF WALL



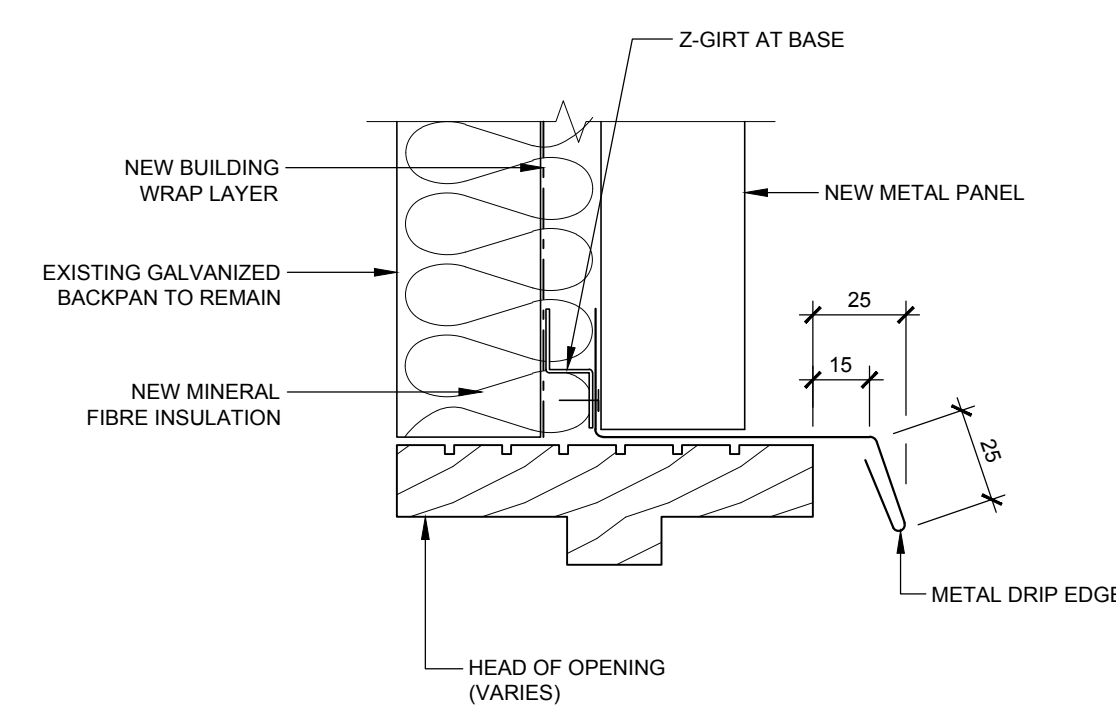
PD-4 SECTION AT LOUVER



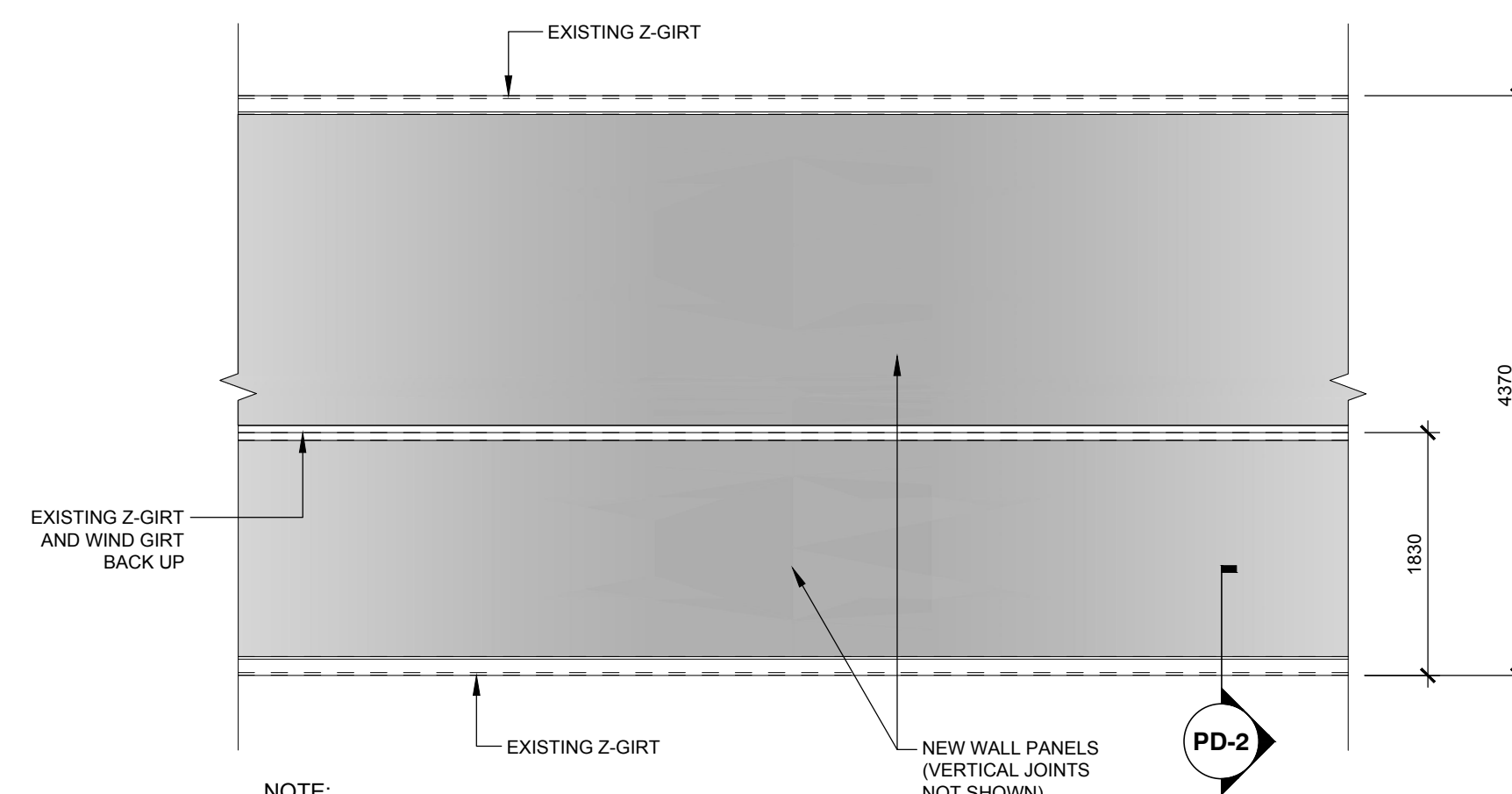
PD-5 TYPICAL PIPE PENETRATION



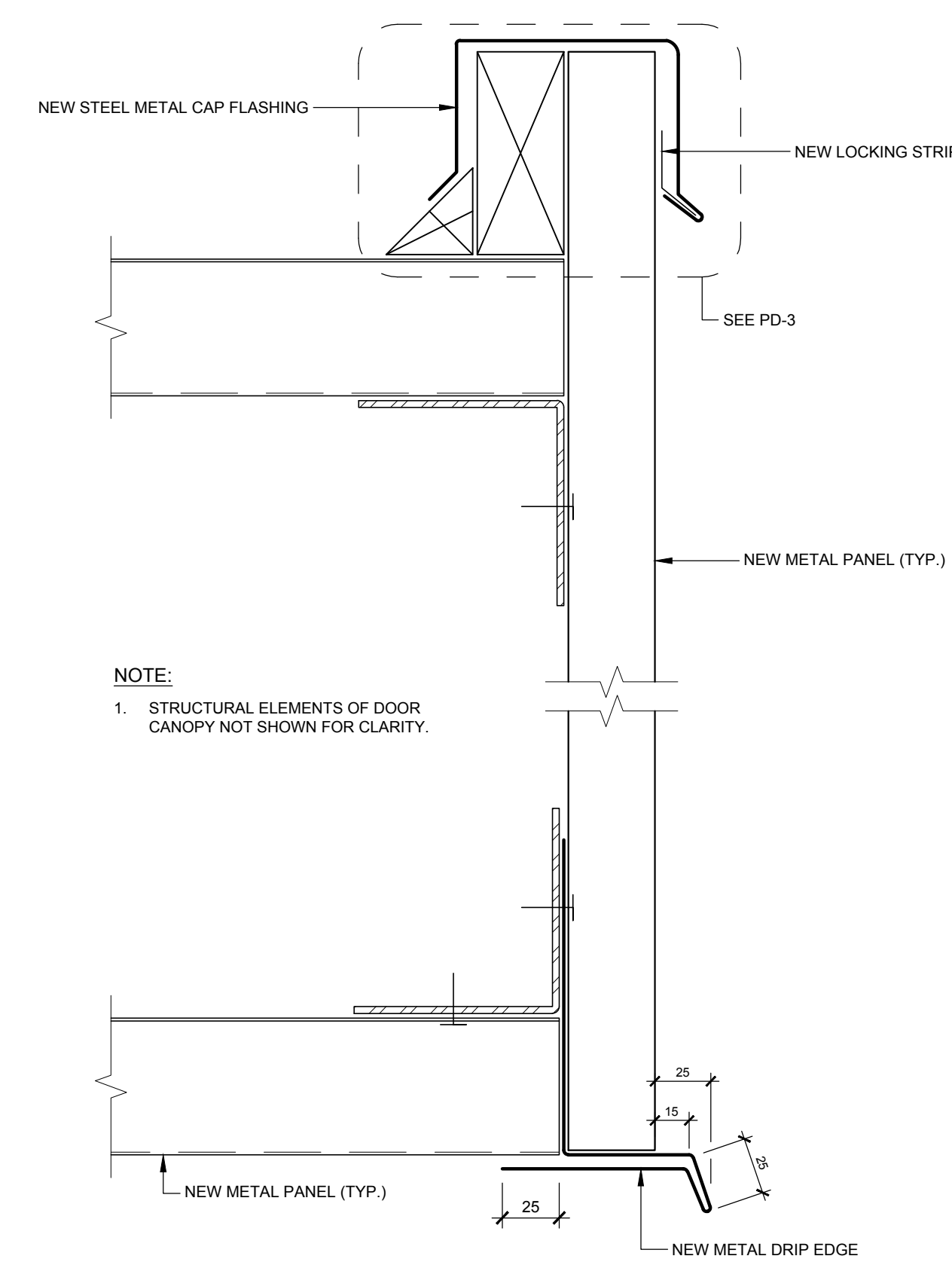
PD-6 WALL INTERSECTION



PD-7 SECTION AT HEAD OF OPENING



PD-8 TYPICAL ELEVATION VIEW OF WALL PANEL



- NOTE:**
1. DESIGN TO WIND LOAD OUTLINED IN SECTION 07 46 19.
  2. ALL CLADDING TO RESIST WIND LOADS OF 1.86 kPa FOR BURLINGTON ONTARIO AS OUTLINED IN SECTION 07 46 19. PROVIDE ENGINEERED STAMPED SHOP DRAWINGS FOR REVIEW.

PD-9 SECTION AT OVERHEAD DOOR CANOPY



CCIW-004-J2959

04		
03		
02	ISSUED FOR PERMIT	28 AUG. 2014
01	ISSUED FOR TENDER	15 MAY 2014
revision		date

Do not scale drawings.  
Verify all dimensions and conditions on site and immediately  
notify the Departmental Representative of all discrepancies.

A	Detail No.
B	No. du détail
C	drawing no. - où détail requis
	drawing no. - où détail requis

project title  
titre du projet  
**BURLINGTON** Ontario  
CANADA CENTRE FOR INLAND WATERS  
867 LAKESHORE ROAD

METAL CLADDING REPLACEMENT

drawing title  
titre du dessin  
**PROJECT DETAILS**

drawn by dessiné par	SGU
designed by conçu par	GJM
approved by approuvé par	EC
by offre	project manager administrateur de projet A.M.
project date date du projet	2014-05-15
project no. no. du projet	CCIW-004-J2959
drawing no. dessiné no.	A-3

**Halsall**

50 Leek Crescent, 1.416.487.5256  
Suite 101 1.888. HALSALL  
Richmond Hill, Ontario, Canada 1.416.487.9766  
L4B 4J3 www.halsall.com