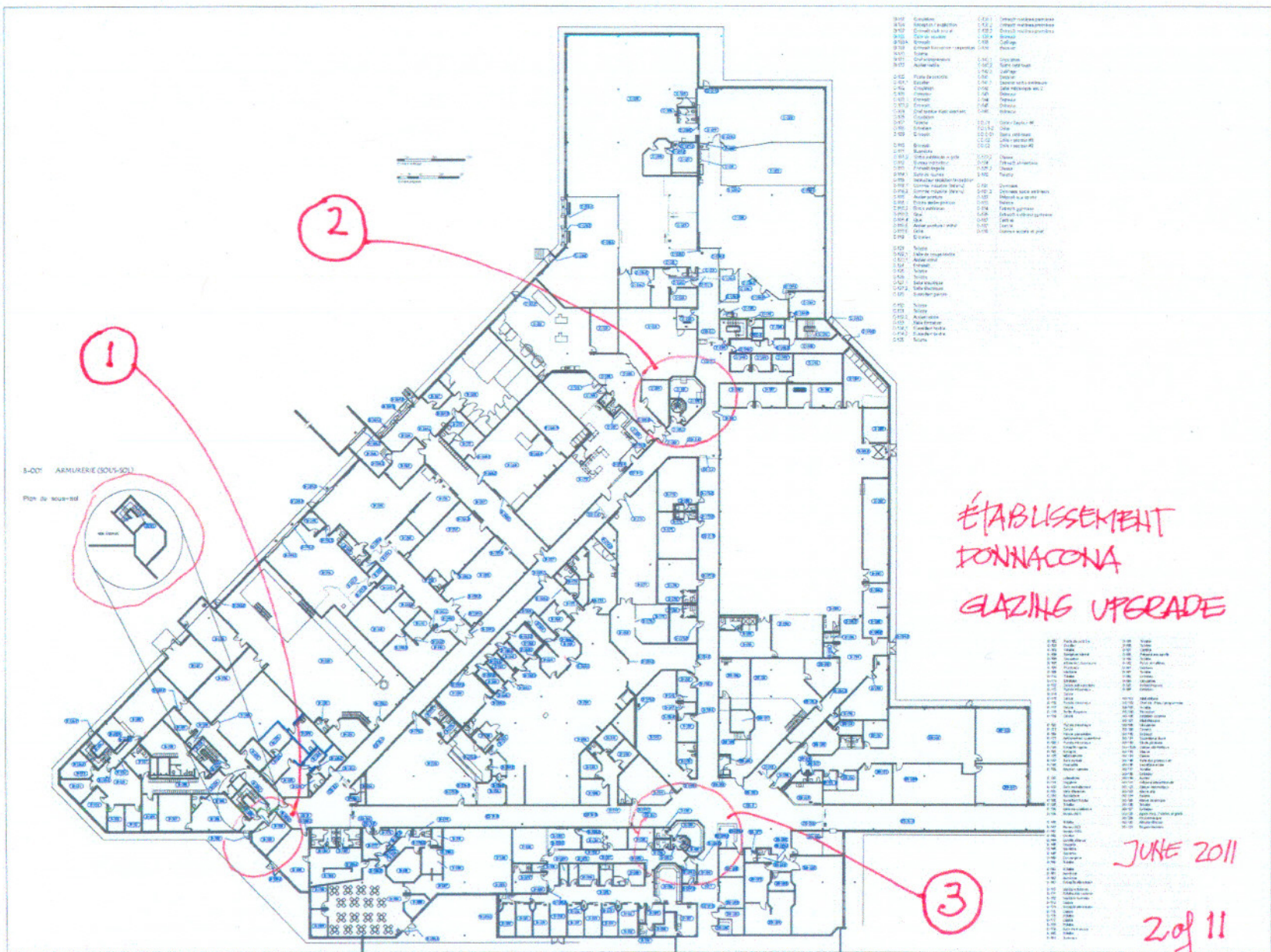


ÉTABLISSEMENT
 D'INNOVATION
 GLAZING UPGRADE

1 of 11



CORRECTIONAL SERVICE CANADA
SERVICE CORRECTIONNEL CANADA

REGION / RÉGION :
QUÉBEC
INSTITUTION /
ÉTABLISSEMENT :
DONNACONA



**REAL PROPERTY
INVENTORY
INVENTAIRE DES
BIENS
IMMOBILIERS**

TAG / ÉTIQUETTE # :
321-05
BUILDING NUMBER /
NO. DE BÂTIMENT :
01, 02, 03
BUILDING NAME /
NOM DE BÂTIMENT :
BLOC PRINCIPAL
SECTEUR 1, 2, 3

FLOOR / ÉTAGE:
REZ-DE-CHAUSSÉE

AREA / SUPERFICIE

ISSUE DATE D'ÉMISSION:
2006-03-01

8101	Corridor	0.01	Corridor
8102	Corridor	0.02	Corridor
8103	Corridor	0.03	Corridor
8104	Corridor	0.04	Corridor
8105	Corridor	0.05	Corridor
8106	Corridor	0.06	Corridor
8107	Corridor	0.07	Corridor
8108	Corridor	0.08	Corridor
8109	Corridor	0.09	Corridor
8110	Corridor	0.10	Corridor
8111	Corridor	0.11	Corridor
8112	Corridor	0.12	Corridor
8113	Corridor	0.13	Corridor
8114	Corridor	0.14	Corridor
8115	Corridor	0.15	Corridor
8116	Corridor	0.16	Corridor
8117	Corridor	0.17	Corridor
8118	Corridor	0.18	Corridor
8119	Corridor	0.19	Corridor
8120	Corridor	0.20	Corridor
8121	Corridor	0.21	Corridor
8122	Corridor	0.22	Corridor
8123	Corridor	0.23	Corridor
8124	Corridor	0.24	Corridor
8125	Corridor	0.25	Corridor
8126	Corridor	0.26	Corridor
8127	Corridor	0.27	Corridor
8128	Corridor	0.28	Corridor
8129	Corridor	0.29	Corridor
8130	Corridor	0.30	Corridor
8131	Corridor	0.31	Corridor
8132	Corridor	0.32	Corridor
8133	Corridor	0.33	Corridor
8134	Corridor	0.34	Corridor
8135	Corridor	0.35	Corridor
8136	Corridor	0.36	Corridor
8137	Corridor	0.37	Corridor
8138	Corridor	0.38	Corridor
8139	Corridor	0.39	Corridor
8140	Corridor	0.40	Corridor
8141	Corridor	0.41	Corridor
8142	Corridor	0.42	Corridor
8143	Corridor	0.43	Corridor
8144	Corridor	0.44	Corridor
8145	Corridor	0.45	Corridor
8146	Corridor	0.46	Corridor
8147	Corridor	0.47	Corridor
8148	Corridor	0.48	Corridor
8149	Corridor	0.49	Corridor
8150	Corridor	0.50	Corridor
8151	Corridor	0.51	Corridor
8152	Corridor	0.52	Corridor
8153	Corridor	0.53	Corridor
8154	Corridor	0.54	Corridor
8155	Corridor	0.55	Corridor
8156	Corridor	0.56	Corridor
8157	Corridor	0.57	Corridor
8158	Corridor	0.58	Corridor
8159	Corridor	0.59	Corridor
8160	Corridor	0.60	Corridor
8161	Corridor	0.61	Corridor
8162	Corridor	0.62	Corridor
8163	Corridor	0.63	Corridor
8164	Corridor	0.64	Corridor
8165	Corridor	0.65	Corridor
8166	Corridor	0.66	Corridor
8167	Corridor	0.67	Corridor
8168	Corridor	0.68	Corridor
8169	Corridor	0.69	Corridor
8170	Corridor	0.70	Corridor
8171	Corridor	0.71	Corridor
8172	Corridor	0.72	Corridor
8173	Corridor	0.73	Corridor
8174	Corridor	0.74	Corridor
8175	Corridor	0.75	Corridor
8176	Corridor	0.76	Corridor
8177	Corridor	0.77	Corridor
8178	Corridor	0.78	Corridor
8179	Corridor	0.79	Corridor
8180	Corridor	0.80	Corridor
8181	Corridor	0.81	Corridor
8182	Corridor	0.82	Corridor
8183	Corridor	0.83	Corridor
8184	Corridor	0.84	Corridor
8185	Corridor	0.85	Corridor
8186	Corridor	0.86	Corridor
8187	Corridor	0.87	Corridor
8188	Corridor	0.88	Corridor
8189	Corridor	0.89	Corridor
8190	Corridor	0.90	Corridor
8191	Corridor	0.91	Corridor
8192	Corridor	0.92	Corridor
8193	Corridor	0.93	Corridor
8194	Corridor	0.94	Corridor
8195	Corridor	0.95	Corridor
8196	Corridor	0.96	Corridor
8197	Corridor	0.97	Corridor
8198	Corridor	0.98	Corridor
8199	Corridor	0.99	Corridor
8200	Corridor	1.00	Corridor

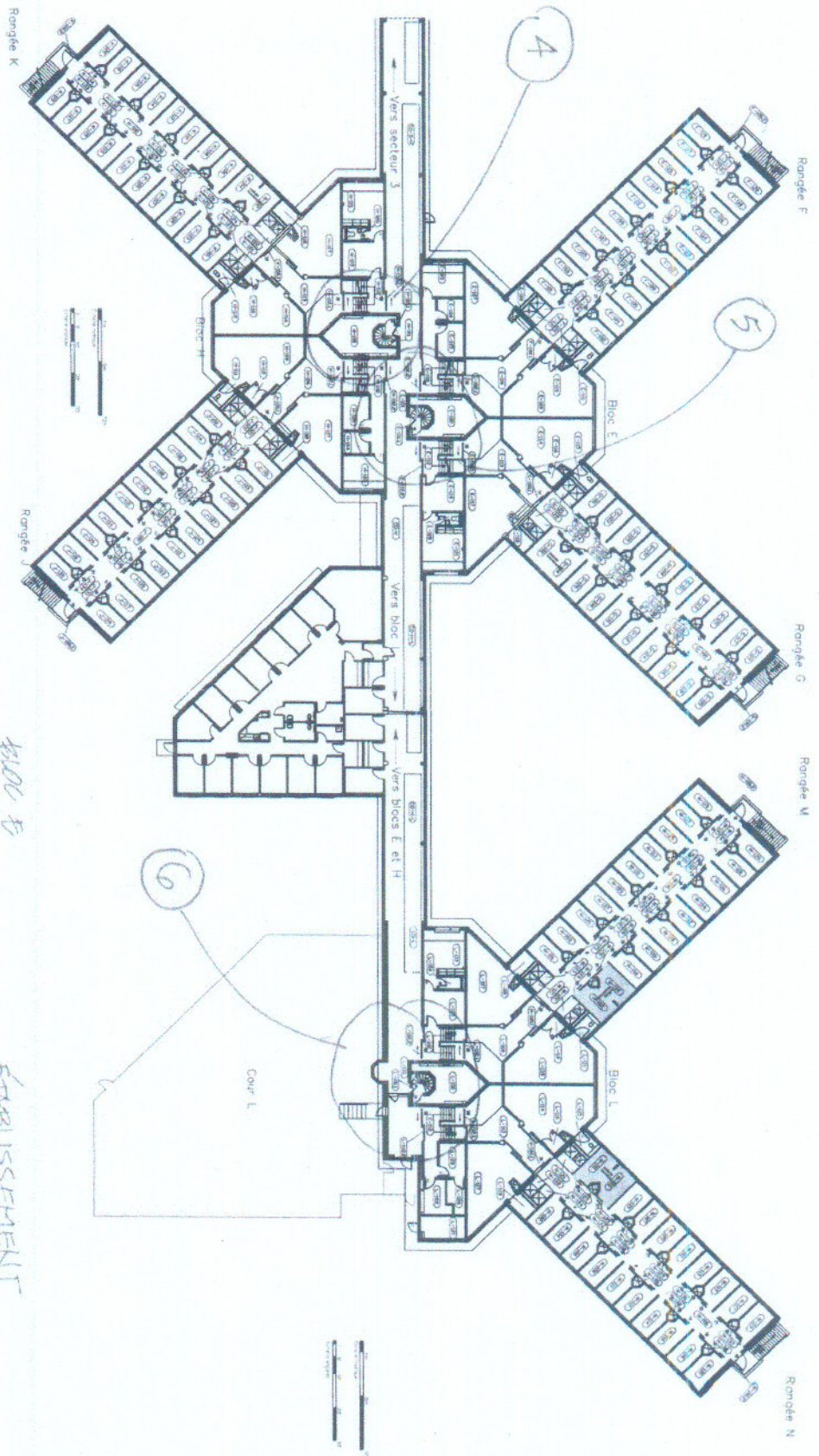
**ÉTABLISSEMENT
DONNACONA
ELAZING UPGRADE**

JUNE 2011
2 of 11

1-001 ARMURERIE (SOUS-SOL)

Plan de situation



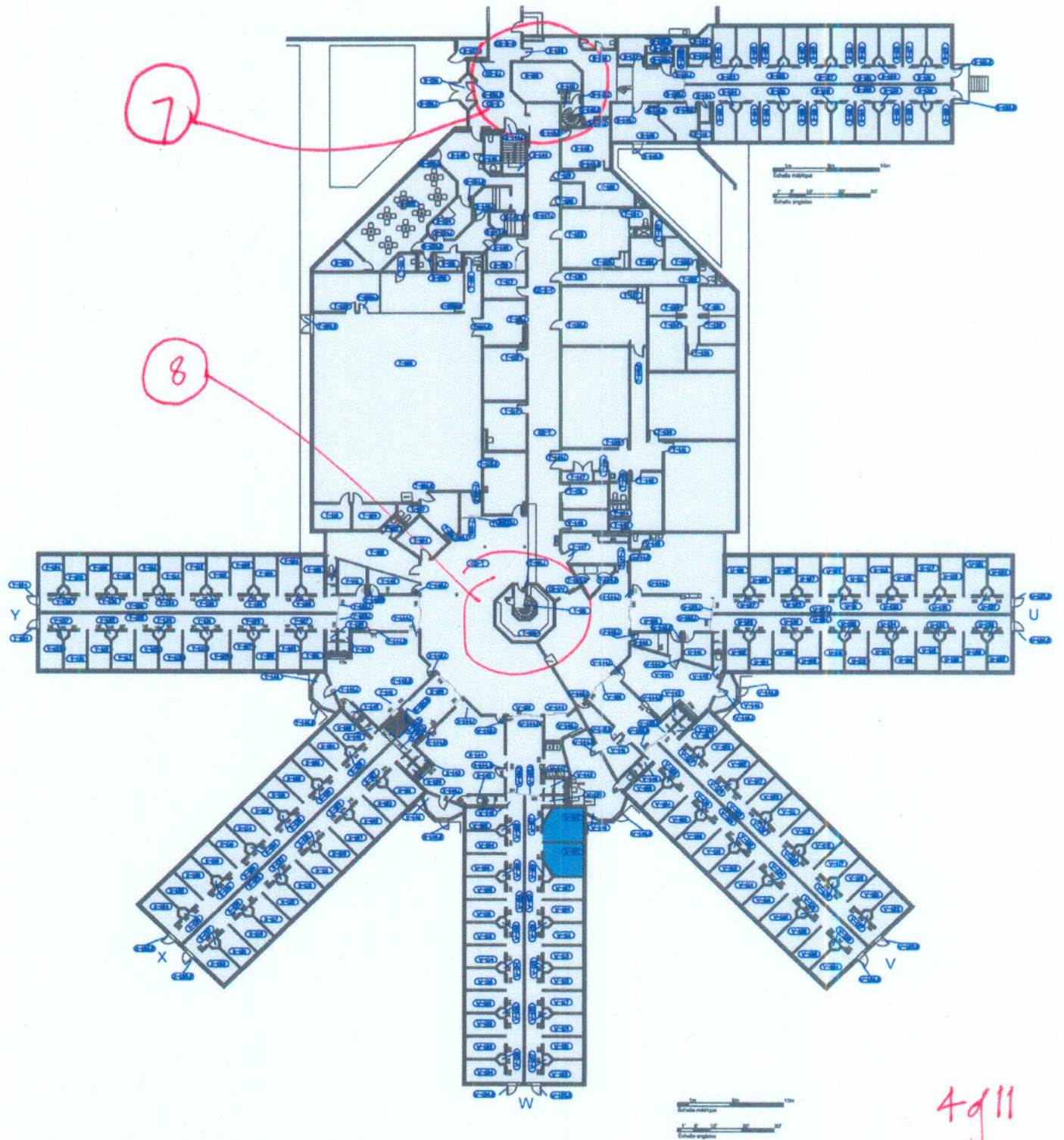


BLOC E
BLOC H
BLOC L

ÉTABLISSEMENT
DONNACONA
GARAGE URBAIN

ÉTABLISSEMENT
DONNACONA
GARAGE URBAIN

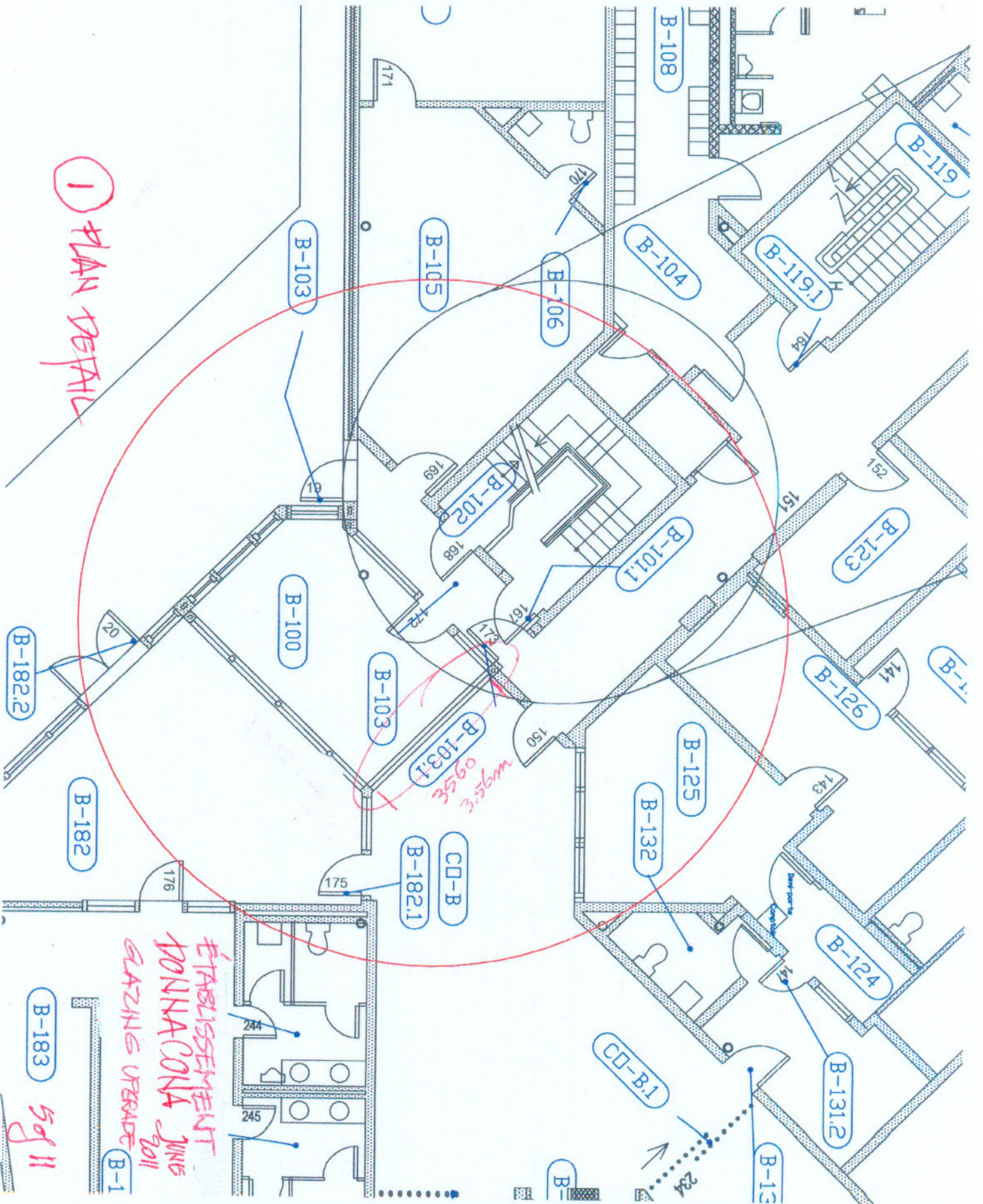
36/11



4g11

ÉTABLISSEMENT
 TONNACONA
 GLAZING UPGRADE

① PLAN DÉTAIL



ÉTABLISSEMENT JUIS DONNAICONA 2011 SAZINS UPRADÉ B-1

5 of 11

112

C-113

1.76
0.29
2.05

CO-C.1

ASC-2

C-139

C-140.1

C-143

C-144

CO-C

C-105

-108

C-104

C-101

C-100

D-198

D

C-102.2

C-101.1

D-181

C-107

C-103

comptoir

B-172.3

C-102

CO-C.3

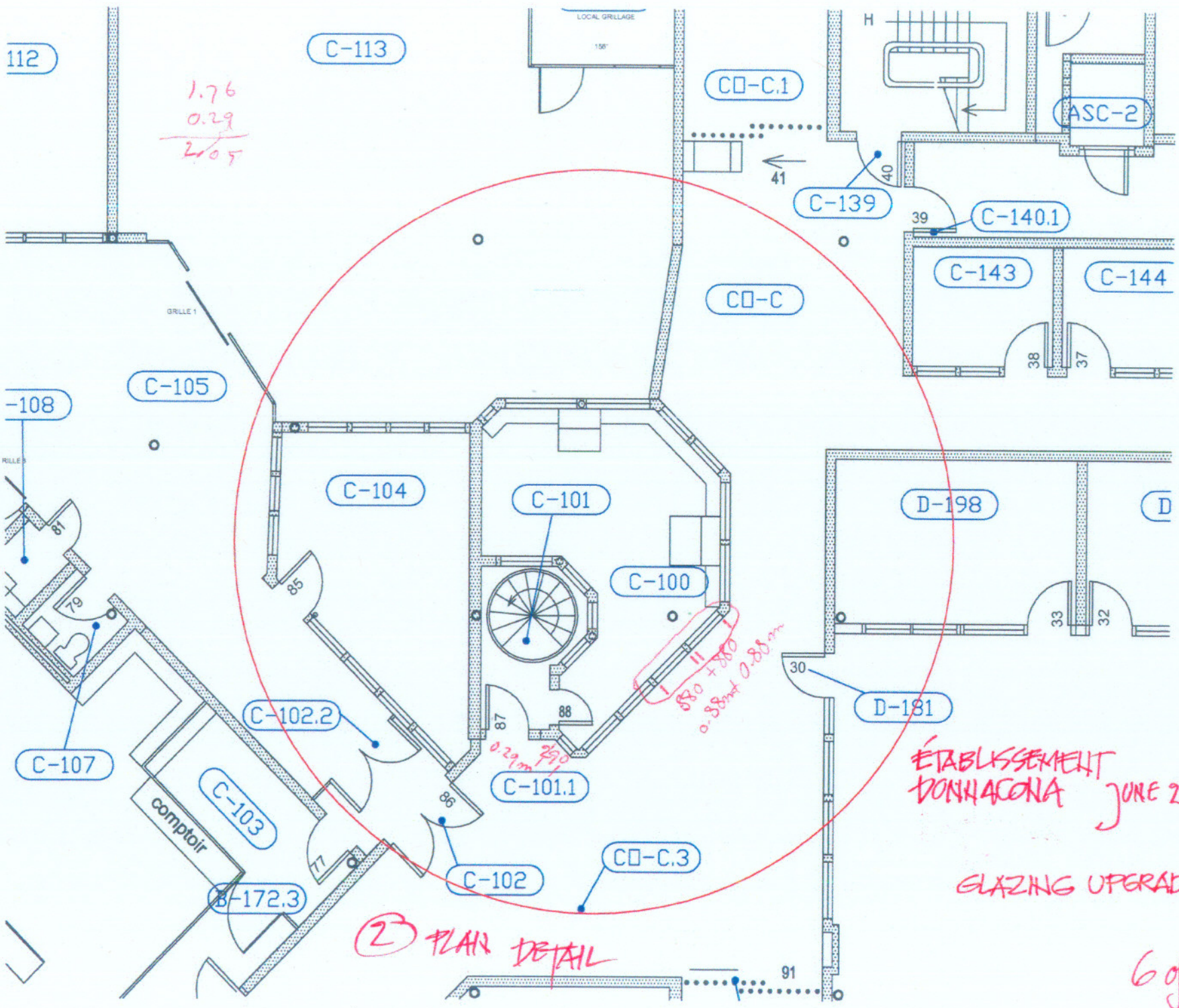
580 + 800
0.58m + 0.80m

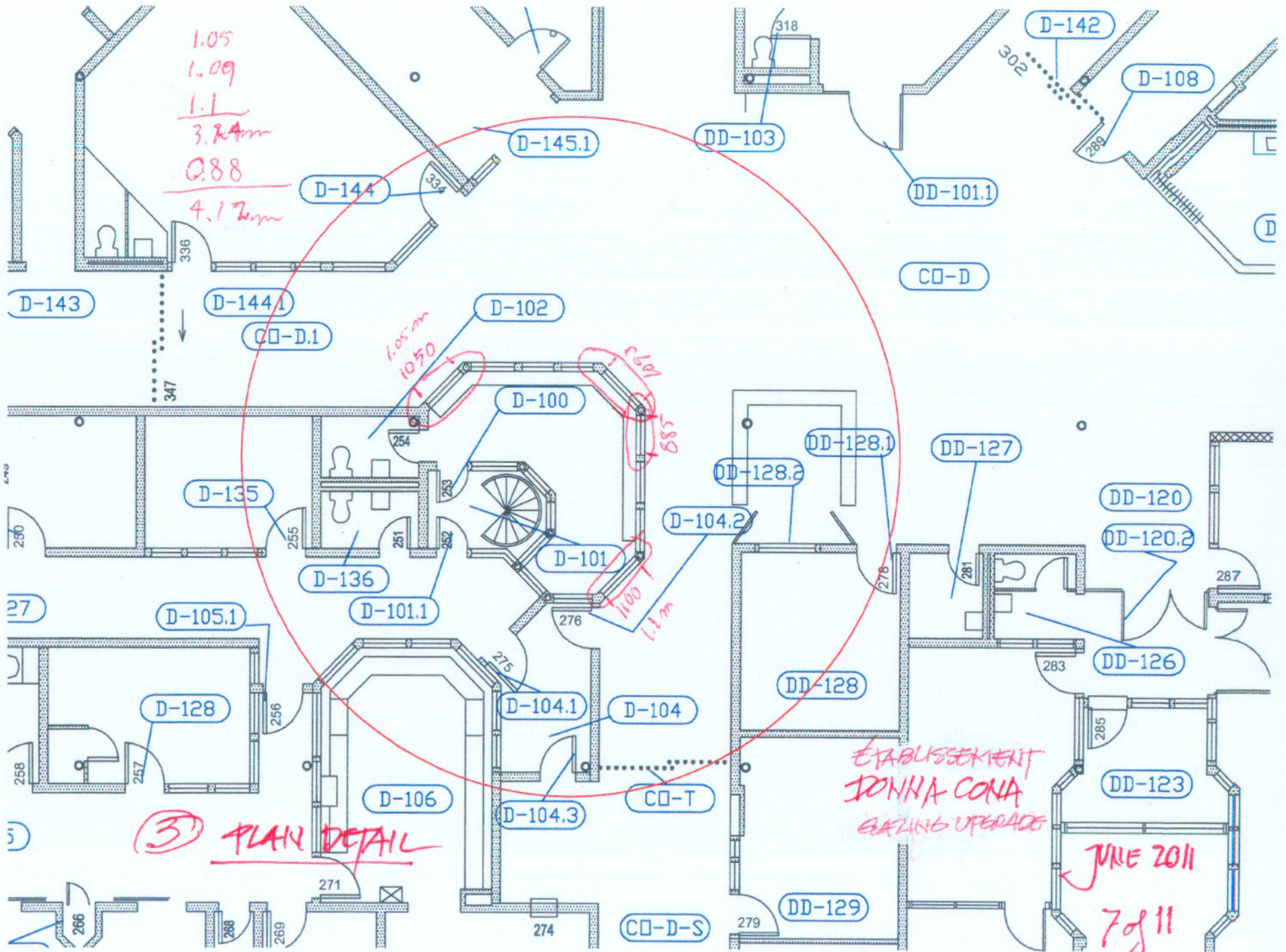
ÉTABLISSEMENT
DONHACONA JUNE 2011

GLAZING UPGRADE

② PLAN DETAIL

6 of 11





③ PLAN DETAIL

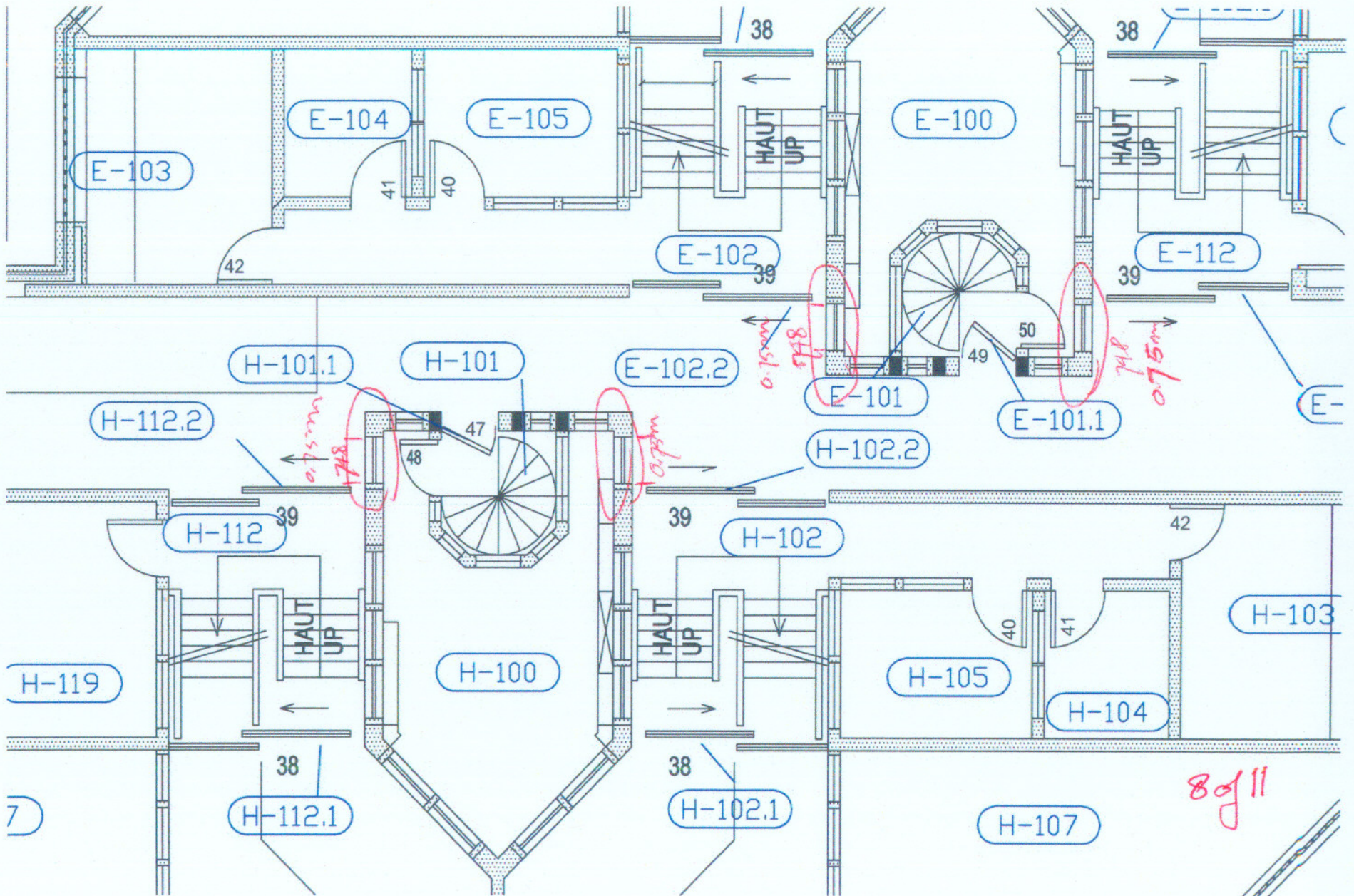
ETABLISSEMENT
DONNA CONA
GRAZING UPGRADE

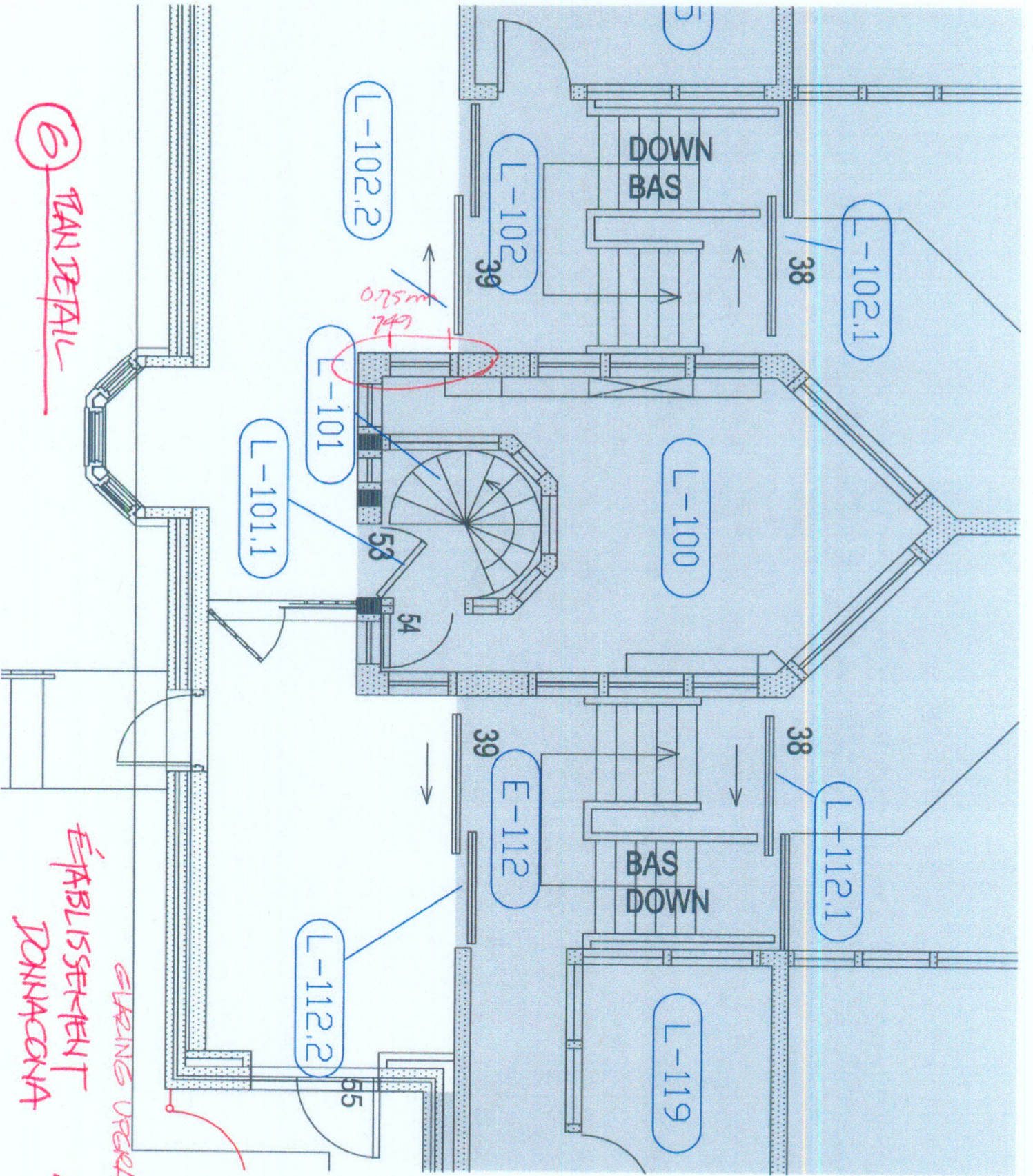
JUNE 2011

7 of 11

④ ⑤ FRAN DETAIL

ÉTABLISSEMENT DONNACONA
GLAZING UPGRADE





6 PLAN DETAIL

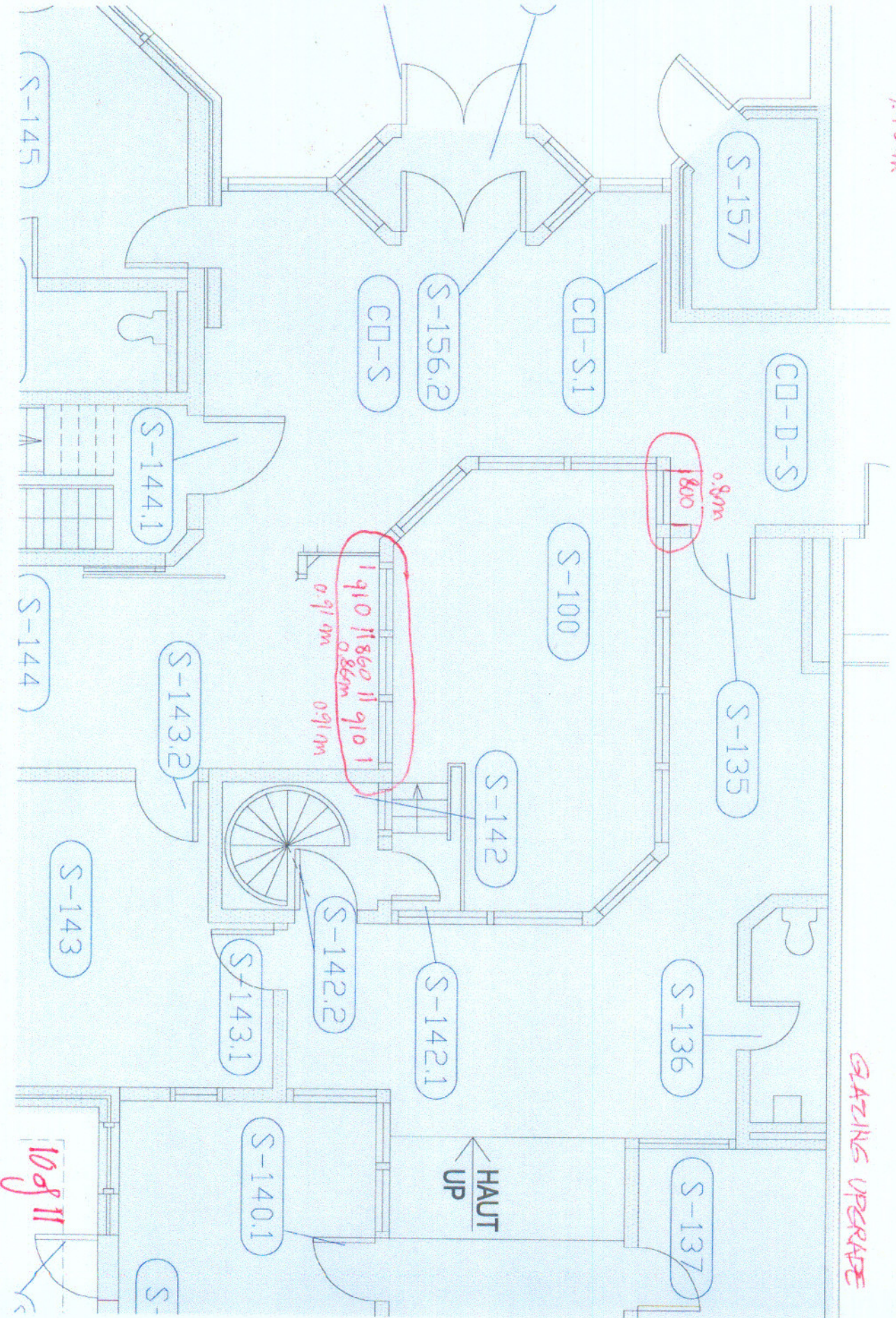
STAIRING UPGRADE
 ESTABLISHED
 DOMINANCE 9/11

0.800
 0.860
 0.91
 3.48 m

7 PLAN DETAIL

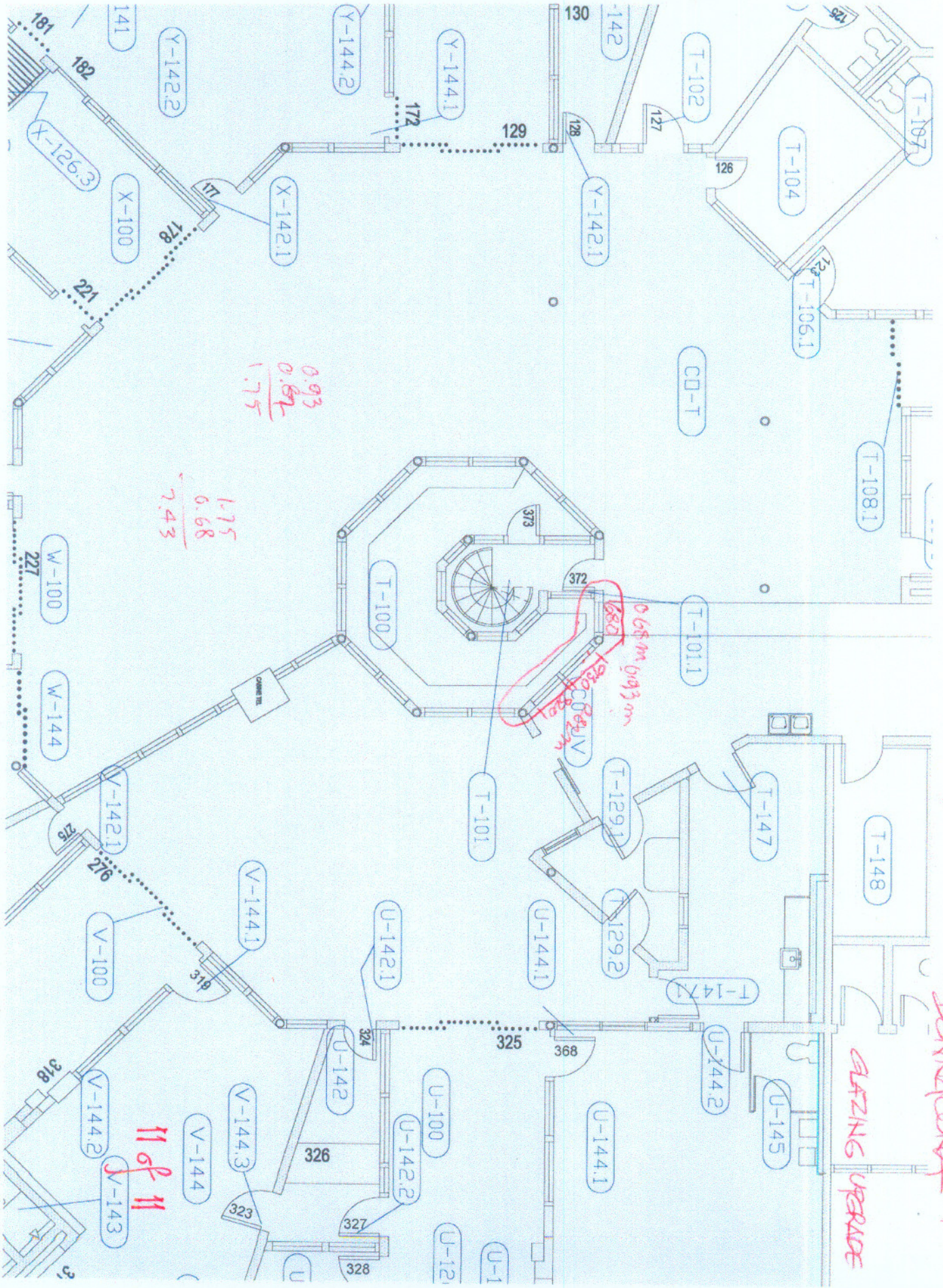
FÄHLSSEKMENT
 DRINKACONA

GLAZING UPGRADE



HAUT
 UP

10911



⑧ FAN DEWALL

STAIRS & FEET
 PENNONS

ALZING UPRIDE

0.93
 0.87
 1.75

1.75
 6.68
 7.43

0.68 m high m
 1.82 m

11 of 11