



PHOTO #1



PHOTO #2



PHOTO #3



PHOTO #4



PHOTO #5



PHOTO #6



PHOTO #7

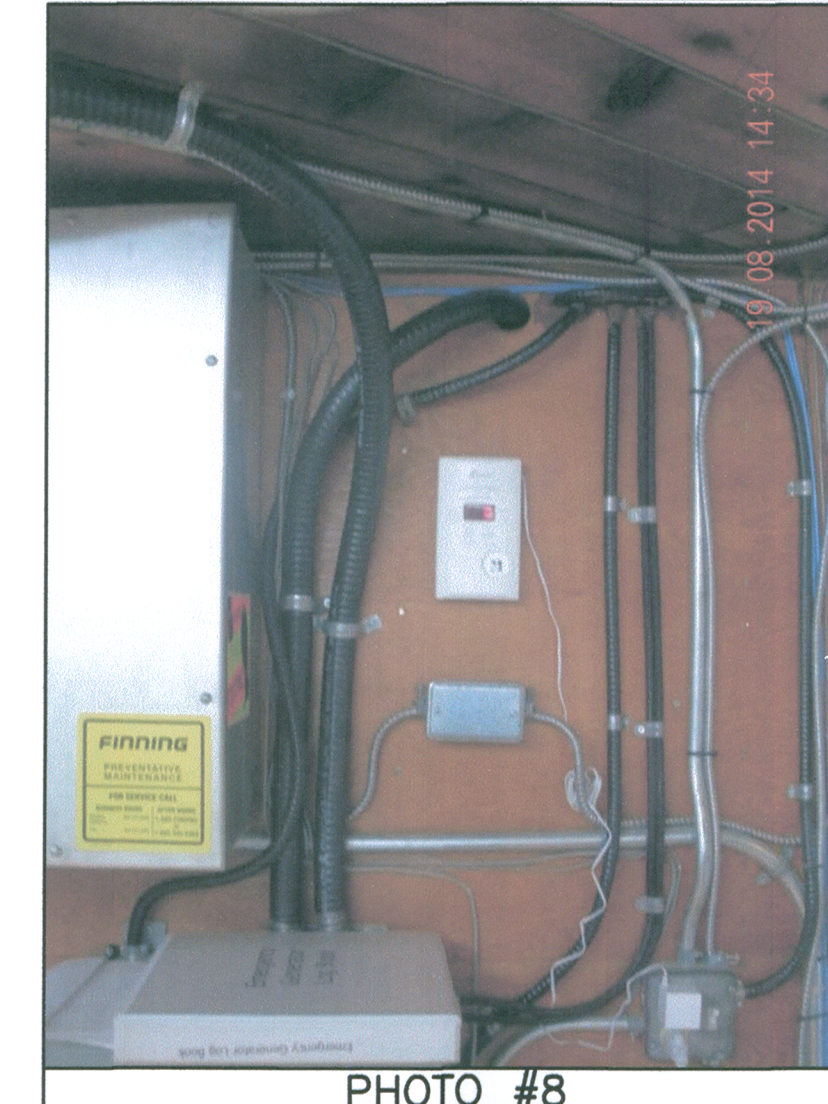


PHOTO #8



PHOTO #9



PHOTO #10

NOTE:
ABBREVIATION "S&I" REFERS TO
"SUPPLY AND INSTALL".

PROFESSIONAL ENGINEER
M. DEZFOOLI
31918
SEP 22 2014

5		
4		
3		
2		
0	ISSUED FOR TENDER	14/09/08
	Description/Description	Date/Date

Client/client

PUBLIC WORKS AND GOVERNMENT SERVICES CANADA

800 BARRARD ST.
VANCOUVER, BC V6Z 2V2

Project title/Titre du projet

CRESTON, BC
RYKERTS PORT OF ENTRY

GENERATOR REPLACEMENT

Consultant Signature Box Only
N/A

Designed by/Concept par
MASOOD DEZFOOLI

Drawn by/Dessiné par
T. JEREB

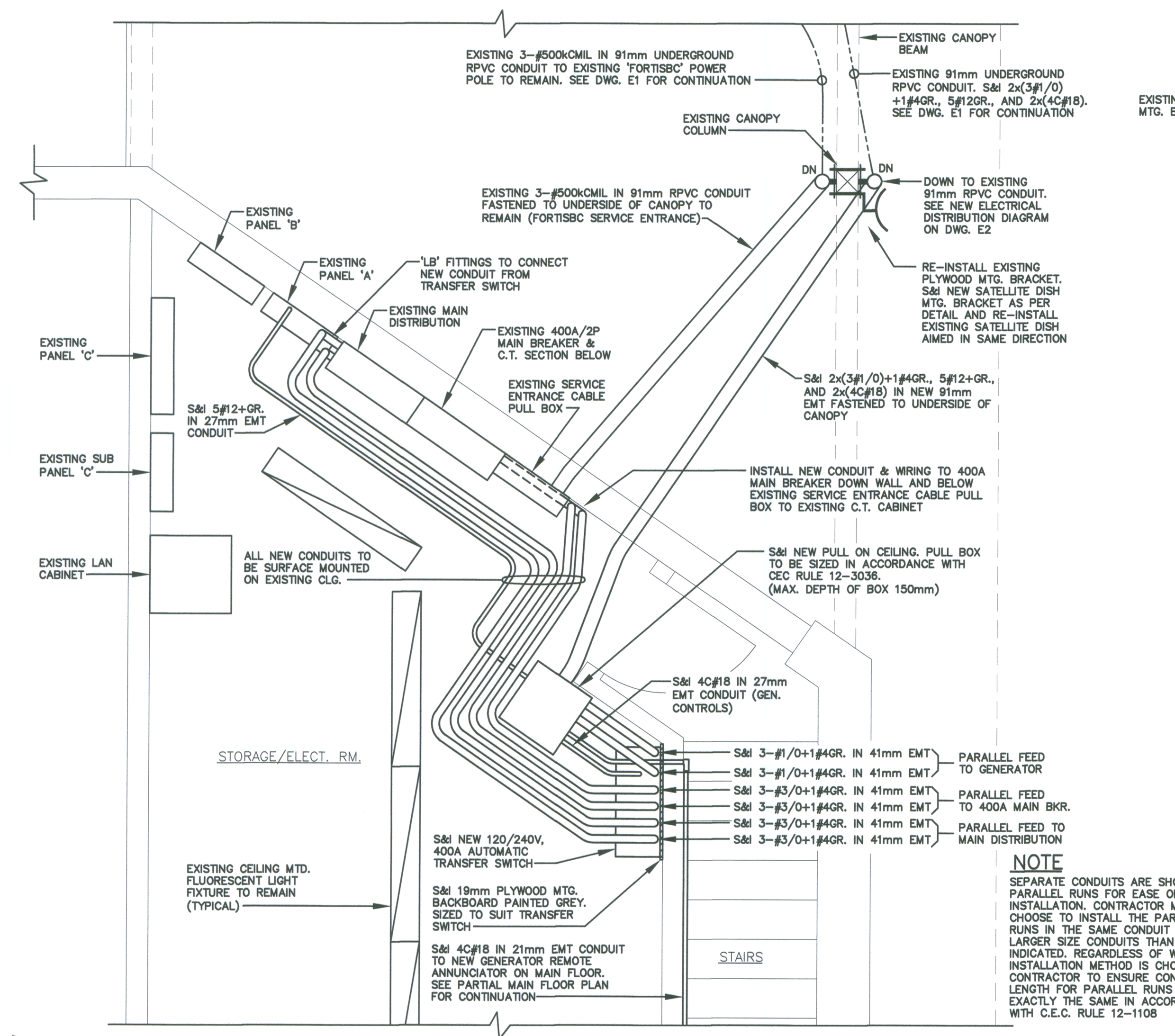
PWGSC Project Manager/Administrateur de Projets TPSGC
JERRY CHEN

PWGSC, Regional Manager, Architectural and Engineering Services/
Gestionnaire régional, Services d'architecture et de génie, TPSGC
OREST KLUFAS

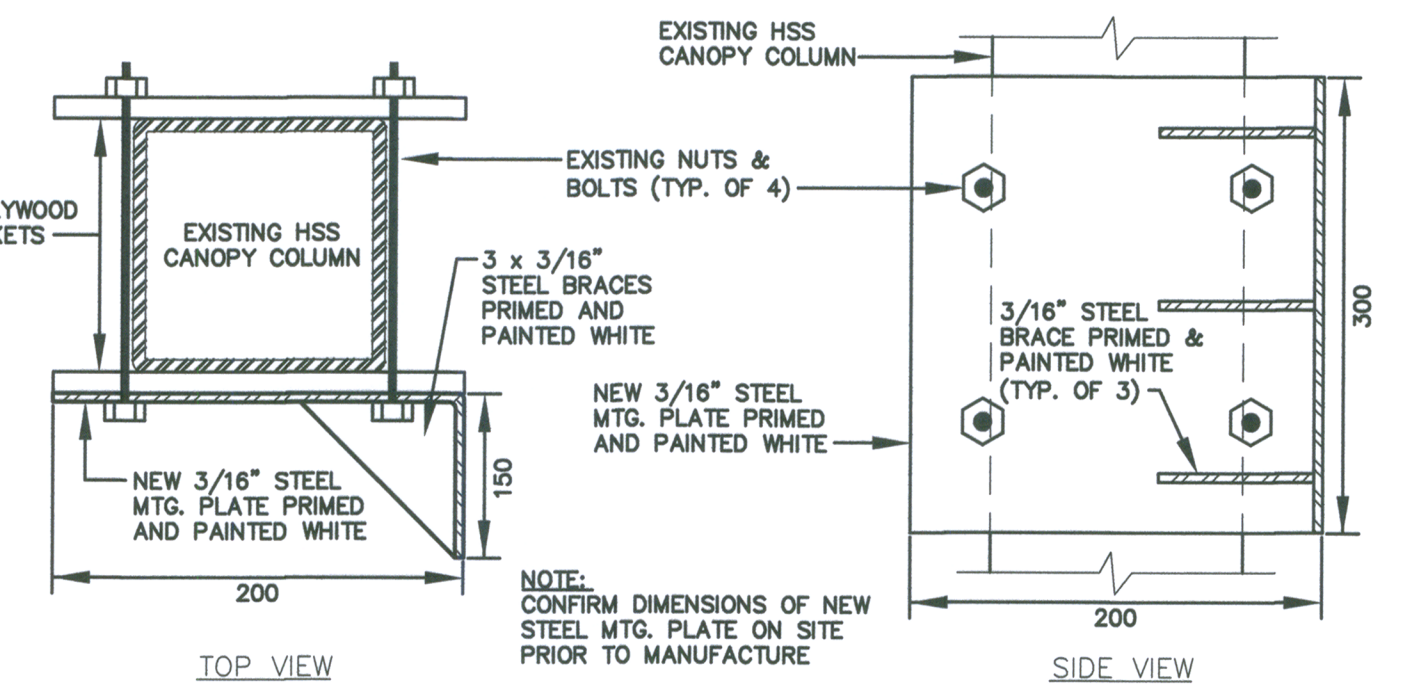
Drawing title/Titre du dessin

STORAGE/ELECTRICAL ROOM PLAN - 2nd FLOOR, PARTIAL MAIN FLOOR PLAN, NEW SATELLITE DISH MTG. BRACKET DETAIL & PHOTOS

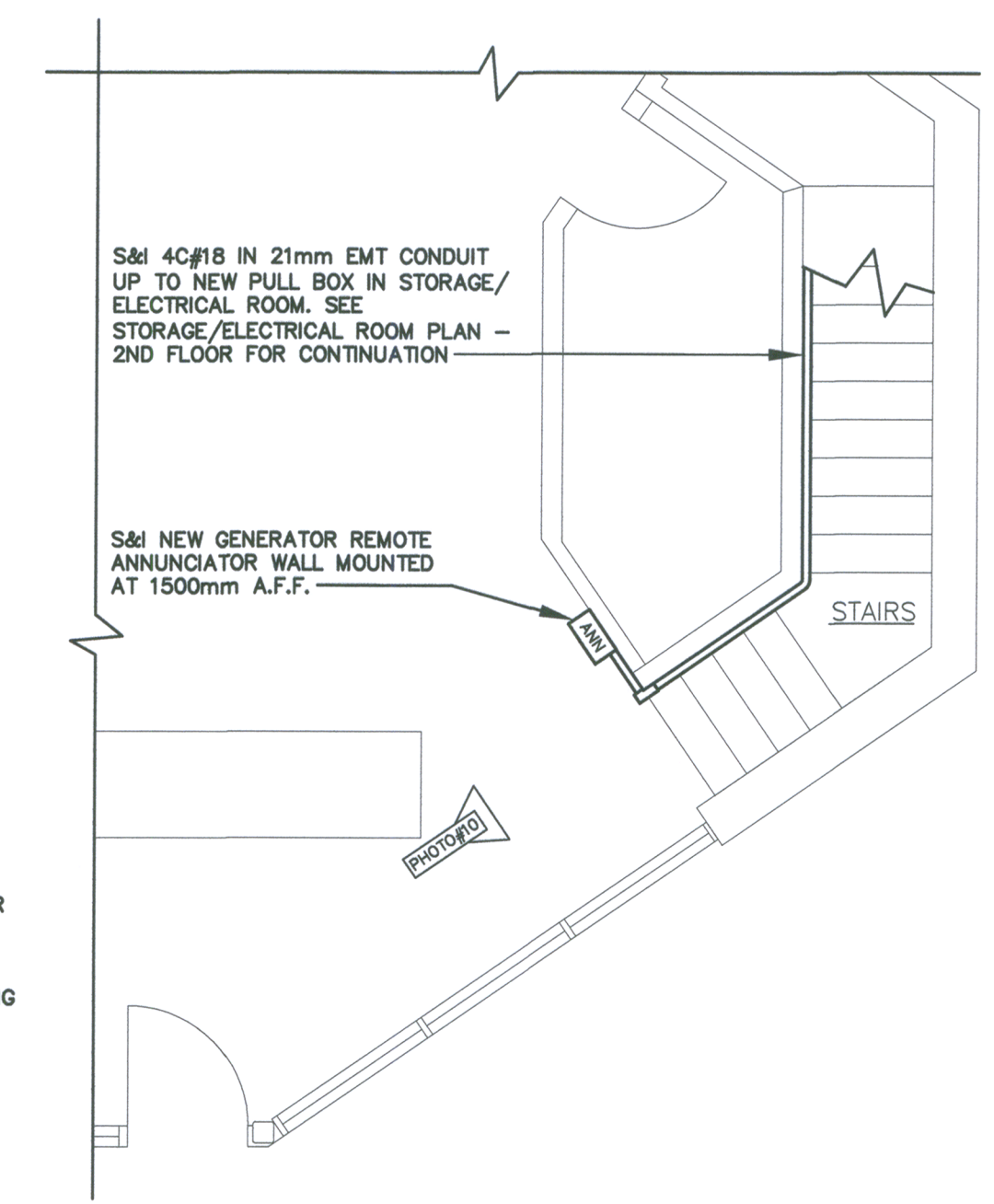
Project No./No. du projet	Sheet/Feuille	Revision no./La Révision no.
R.072471.001	E3 OF 3	0



STORAGE/ELECTRICAL ROOM PLAN - 2nd FLOOR
SCALE: 1:25



NEW SATELLITE DISH MTG. BRACKET DETAIL
SCALE: N.T.S.



PARTIAL MAIN FLOOR PLAN
SCALE: 1:50