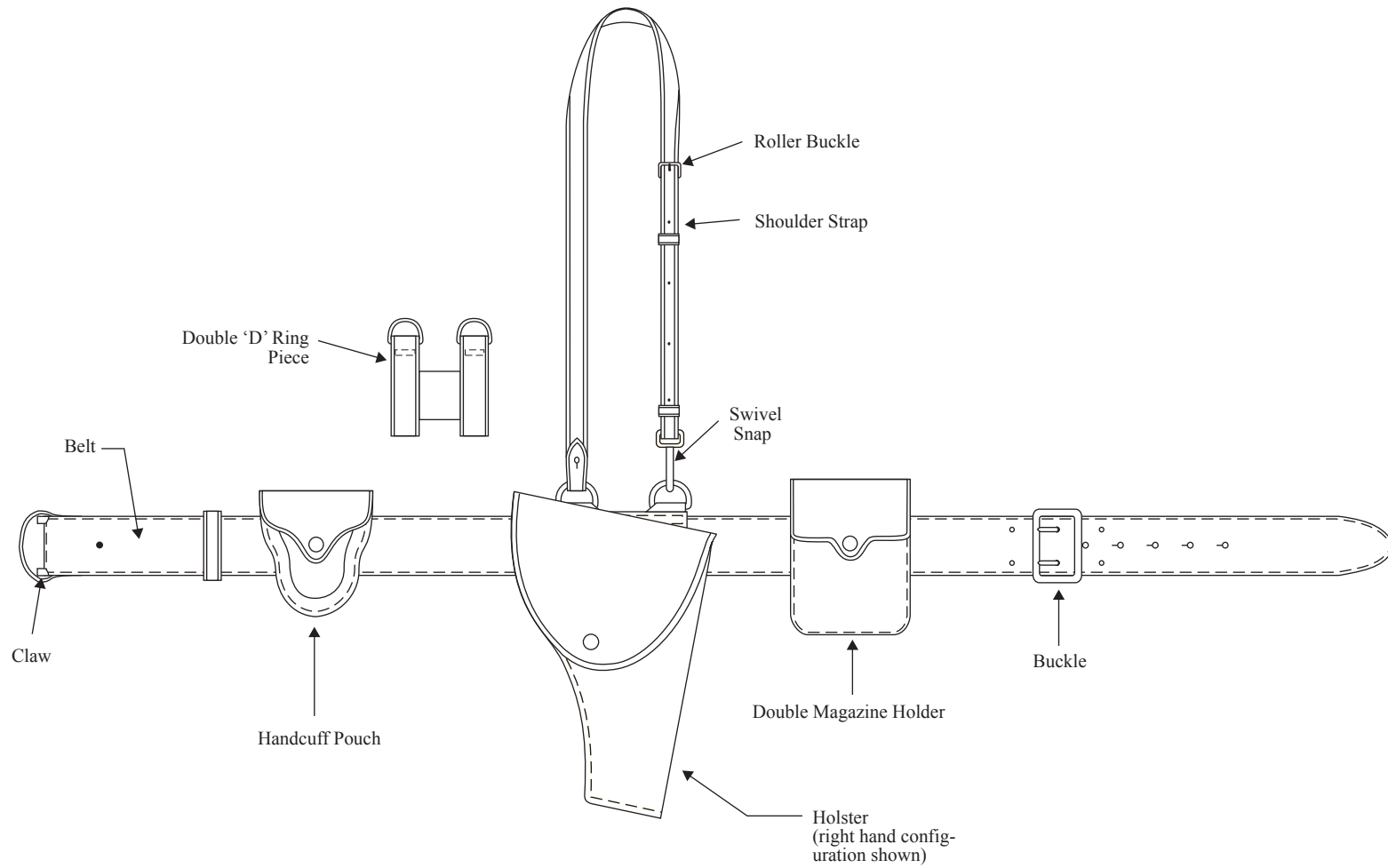


Dwg. 1



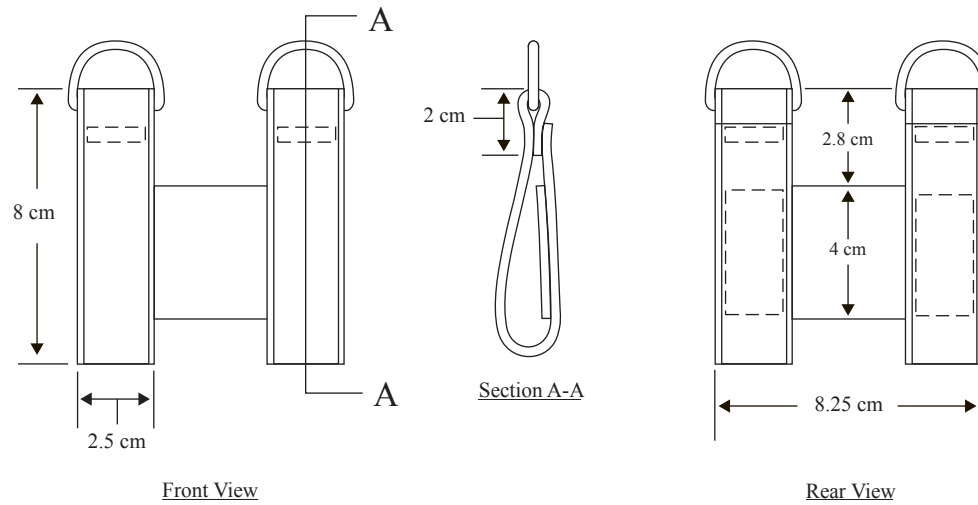
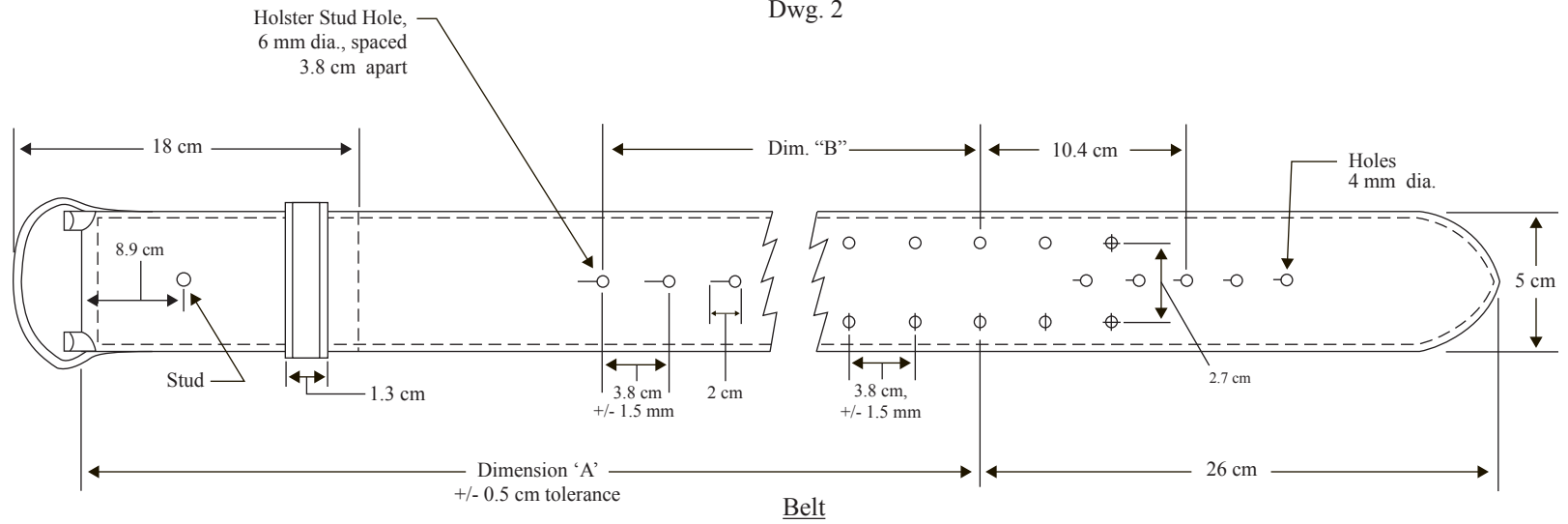
Dwg. 1

NOT TO SCALE

Measurement Tolerance: +/- 0.25cm unless otherwise indicated.

Belt, "D" Ring Piece

Dwg. 2



"D" Ring Loop Piece

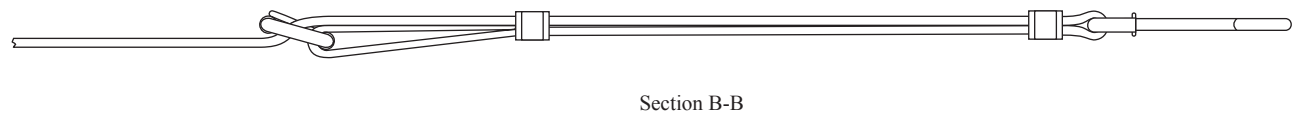
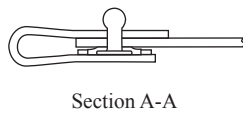
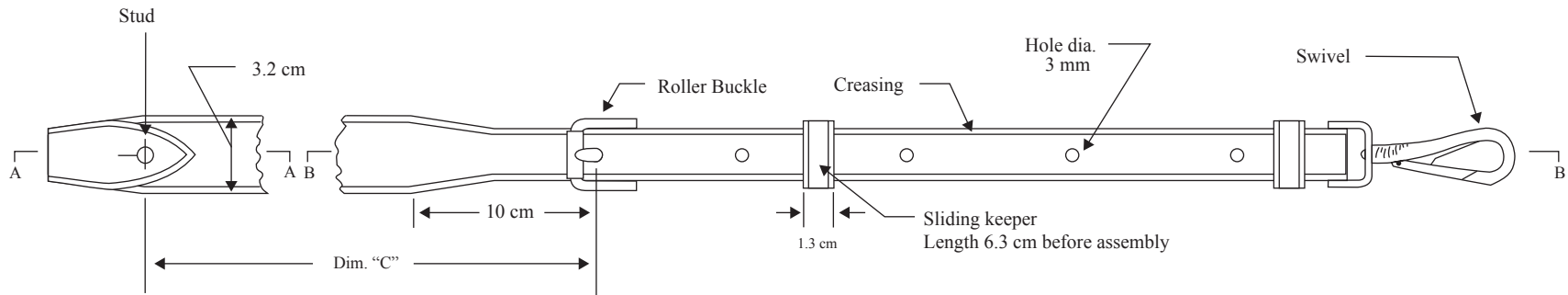
Dwg. 2

NOT TO SCALE

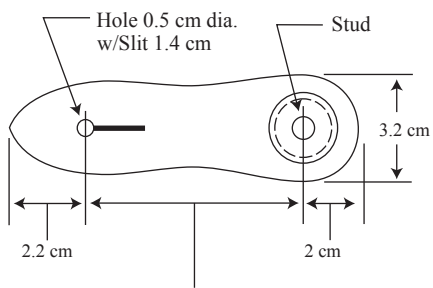
Measurement Tolerance: +/- 0.25cm unless otherwise indicated.

Shoulder Strap

Dwg. 3

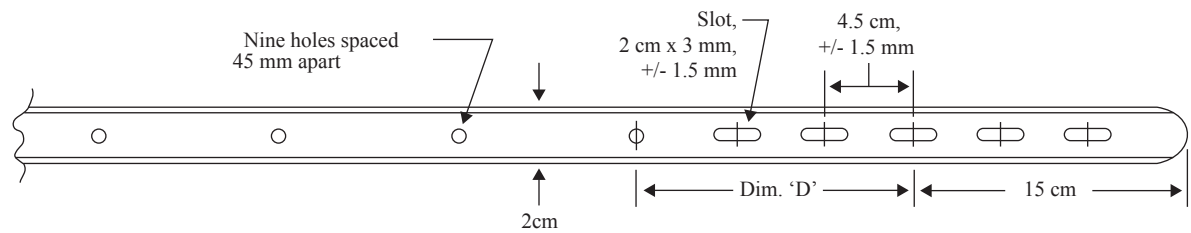


Removable Loop (shown open)



Standard - 8.5 cm  
 Long - 14.25 cm  
 Extra Long - 20 cm

Removable Loop Detail

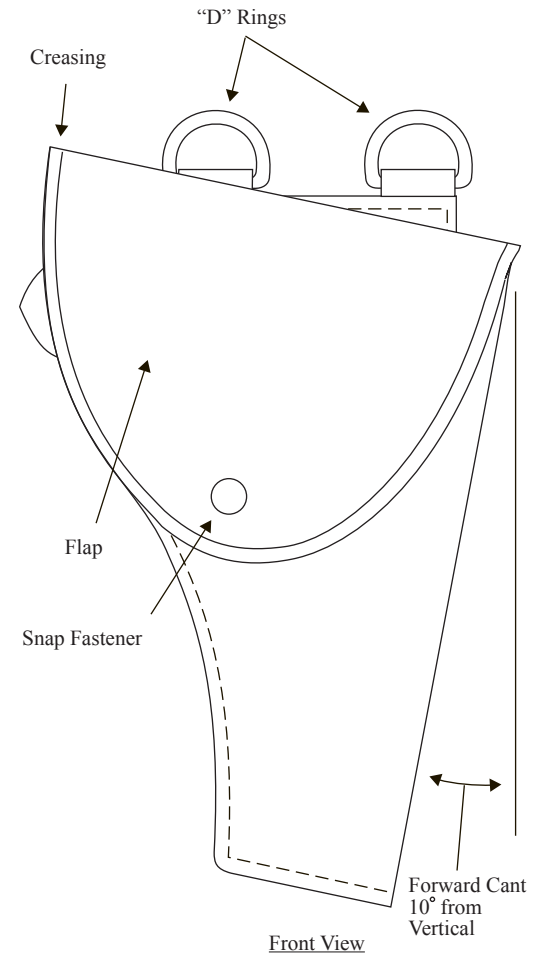
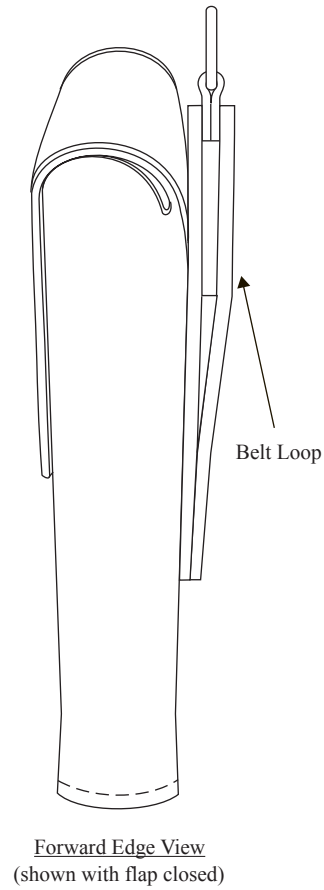
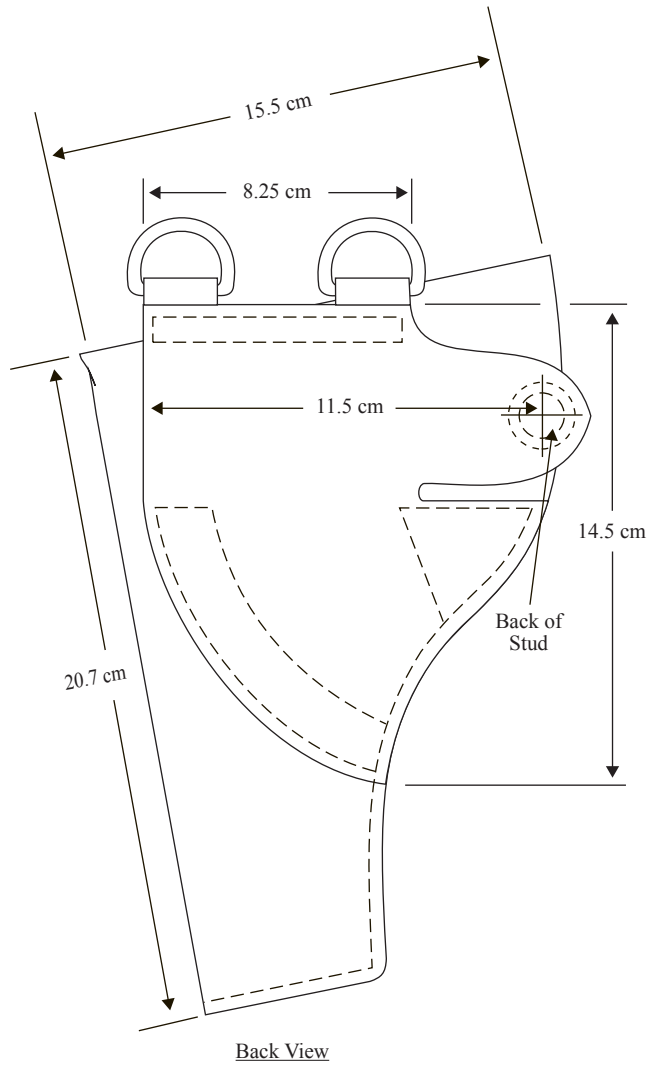


Dwg. 3

NOT TO SCALE

Measurement Tolerance: +/- 0.25cm unless otherwise indicated.

Dwg. 4

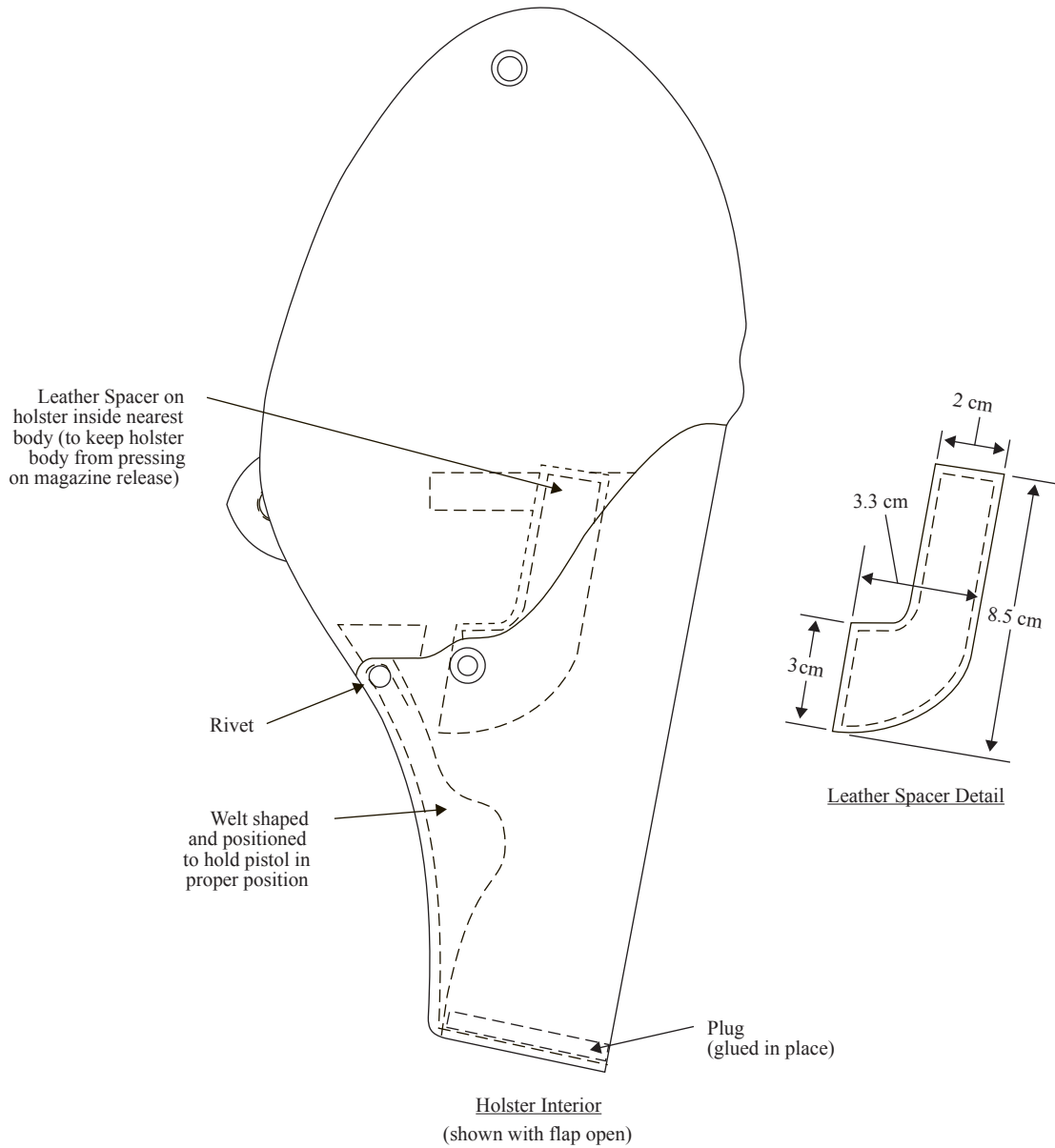


Dwg. 4

NOT TO SCALE  
Measurement Tolerance: +/- 0.25cm unless otherwise indicated.

Holster Interior Detail

Dwg. 5

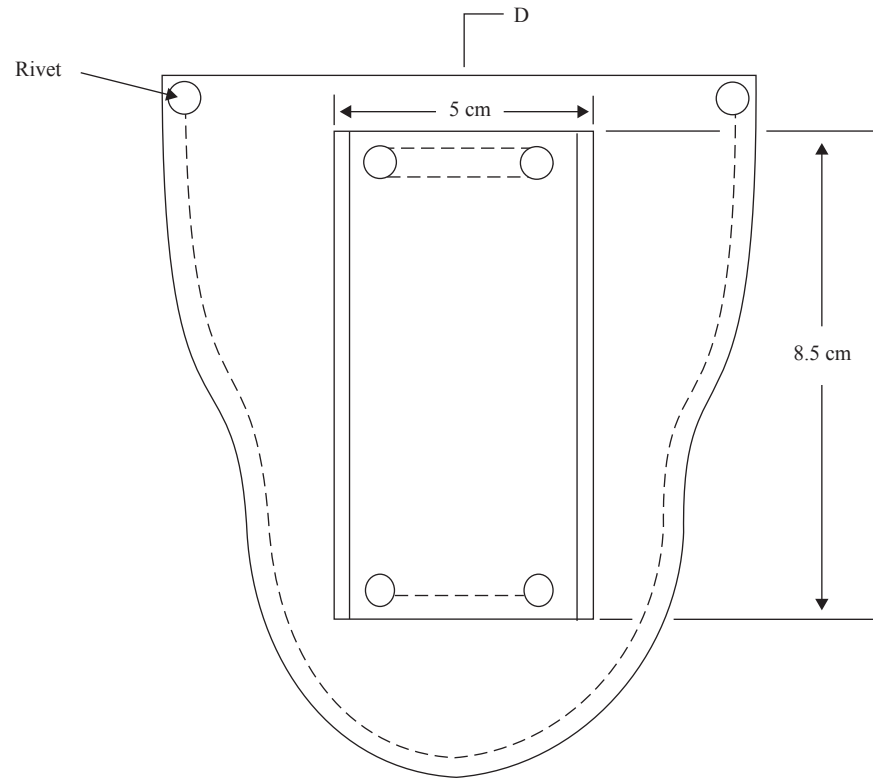
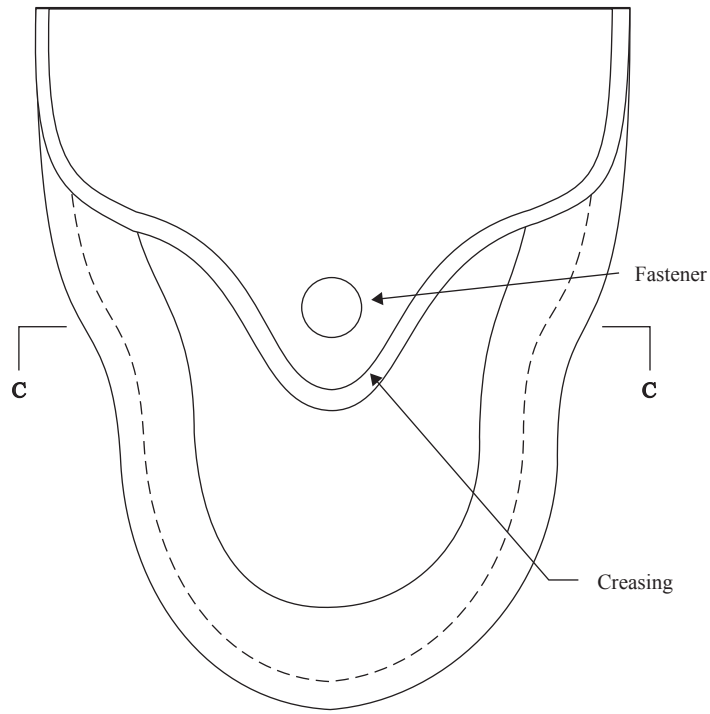


NOT TO SCALE

Measurement Tolerance: +/- 0.25cm unless otherwise indicated.

Pouch, Handcuff

Dwg. 6



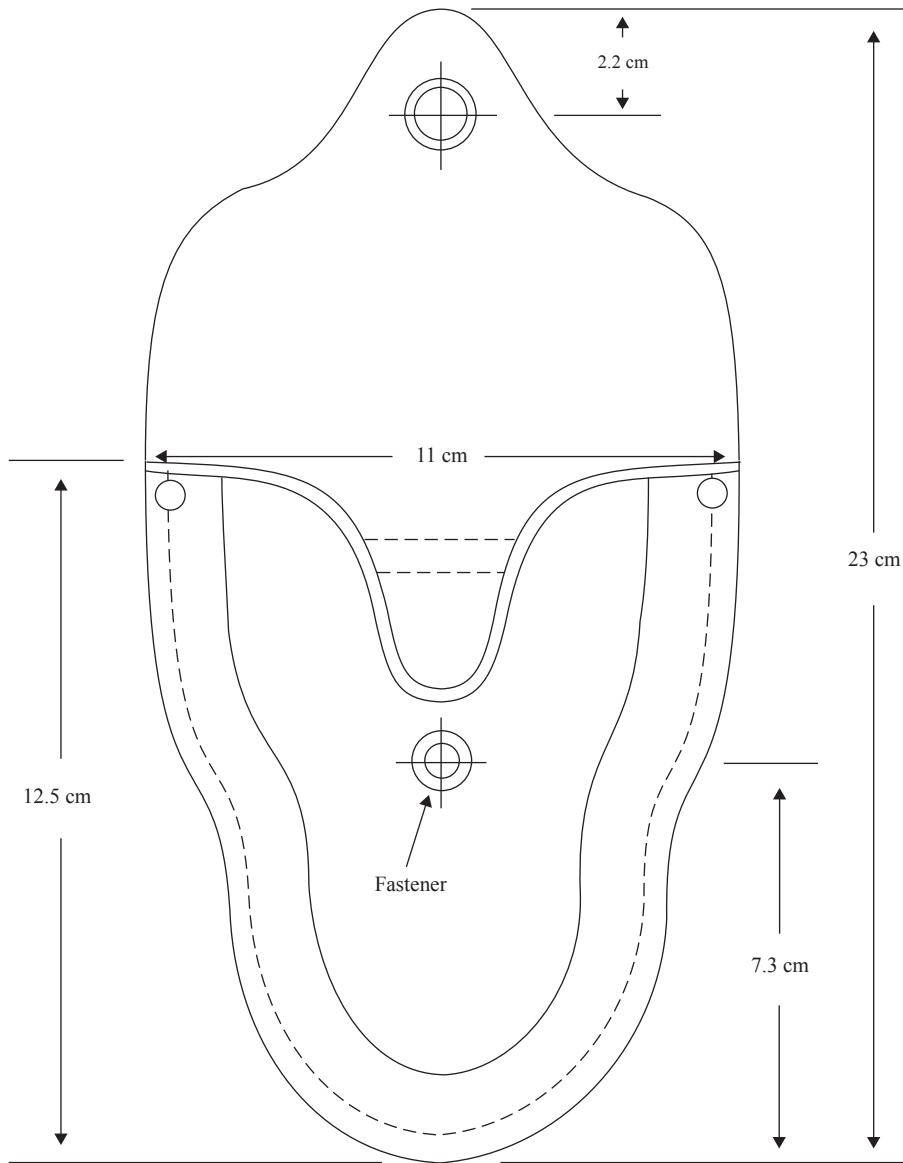
Dwg. 6

NOT TO SCALE

Measurement Tolerance: +/- 0.25cm unless otherwise indicated.

Pouch, Handcuff

Dwg. 7



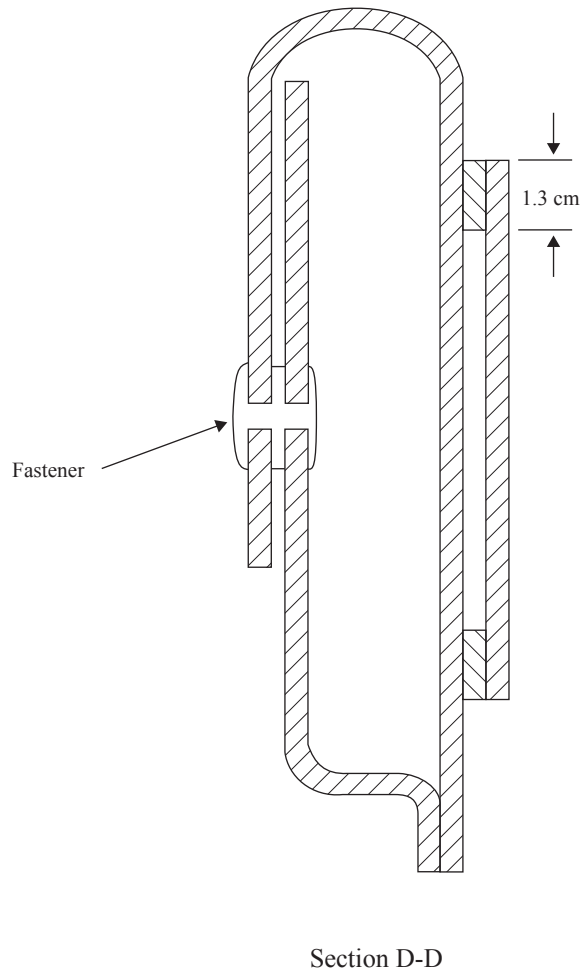
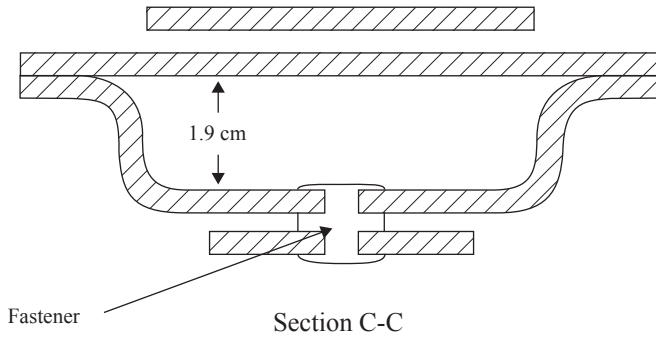
Opened View

NOT TO SCALE

Measurement Tolerance: +/- 0.25cm unless otherwise indicated.

Pouch, Handcuff

Dwg. 8



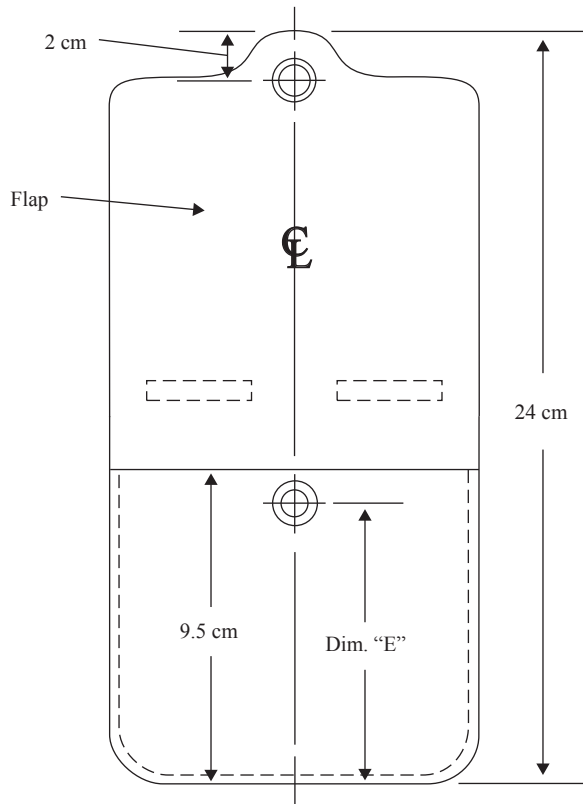
NOT TO SCALE

Measurement Tolerance: +/- 0.25cm unless otherwise indicated.

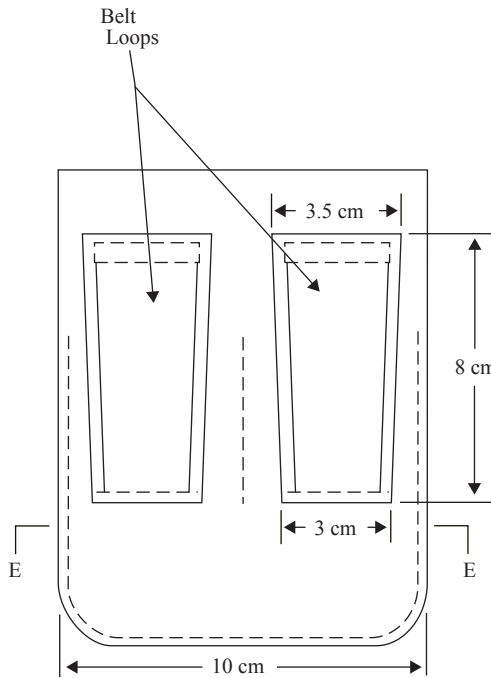


Holder, Magazine, Double

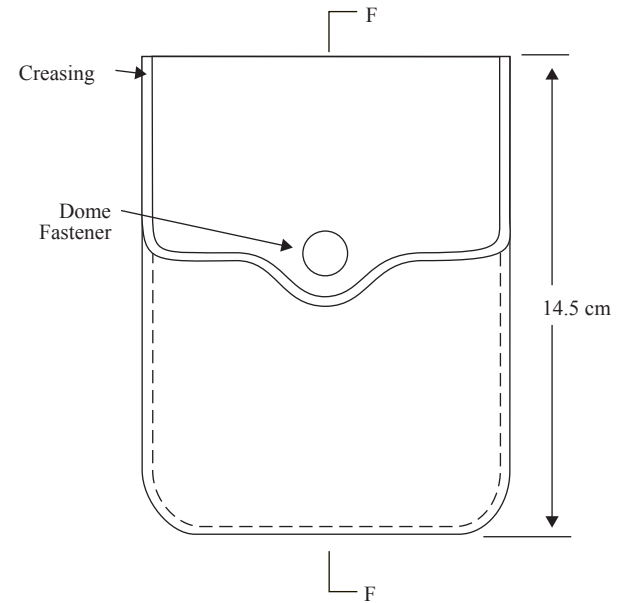
Dwg. 9



Front View  
(flap open)



Rear View



Front View  
(flap closed)

Holder Model	Dimension "E"
Type I (Full Size Pistol Magazines)	8.4 cm
Type II (Compact Pistol Magazines)	6.4 mm

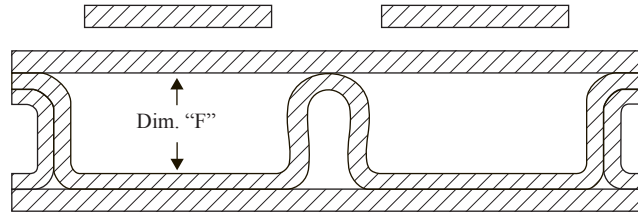
Dwg. 9

NOT TO SCALE

Measurement Tolerance: +/- 0.25cm unless otherwise indicated.

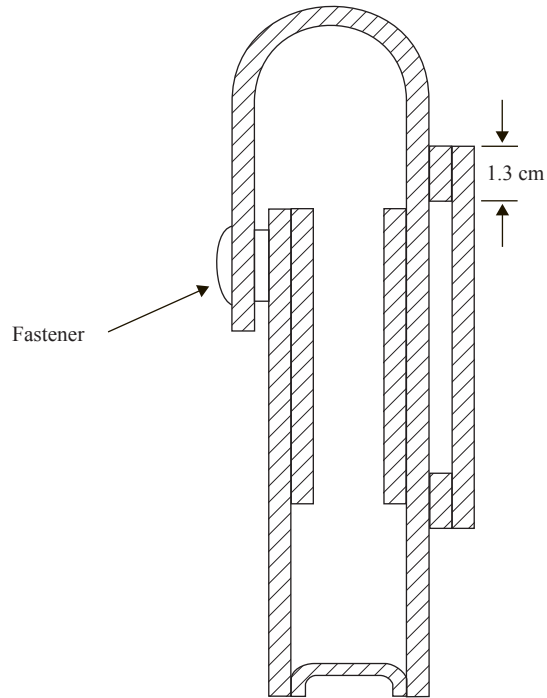
EQUIPMENT, SAM BROWNE  
 Holder, Magazine, Double  
 Dwg. 10

G.S.1045-123



Section E-E

Holder Model	Dimension "F"
Type I (Full Size Pistol Magazines)	2.3 cm
Type II (Compact Pistol Magazines)	1.5 cm



Section F-F

NOT TO SCALE

Measurement Tolerance: +/- 0.25cm unless otherwise indicated.