

06 November, 2014

TO: NRC  
ATTN: Mark O'Connor  
RE: Addendum #A01  
CA Project #14-1104

**Addendum #A01 – Building M-51 Roof Modification / Interior Wall Protection**

Include the following in the original tender documents. Revised drawings are dated 06 November, 2014, "Addendum #1":

**A. ARCHITECTURAL:**

1. **Drawing A100 General Notes:**
  1. Item 07.1 Revise title to "Sealants and Waterproofing"
  2. Item 07.1.3 Roof Sealant: Revise title to "Roof Waterproofing" and replace entire paragraph with paragraph shown. New product to be a Sopralastic system by Soprema.
  3. Item 09.1 Gypsum Partitions: Add new item 16, identifying "Glass Mat Gypsum Substrate"
  
2. **Drawing A101 – Ground Floor Plan & Door/Hardware Schedules:**
  1. Note revised demolition wall type D-01
  2. Note revised wall assembly P-01, and removal and reinstallation of existing double doors between Centre and North buildings.
  3. Note clarification on termination of wall protection at door/window frames and anechoic chamber.
  4. Note revision to removal and reinstallation to existing chain link fence at anechoic chamber. Existing chain link fence located in north building may remain in place.
  5. Note patching (including metal siding and insulation) required at location of exhaust fan to be removed.
  6. Note clarification of framing of P-02A wall construction at west elevation of Centre Building
  
3. **Drawing A102 – Roof Plan & Sectional Details:**
  1. Note revised waterproofing coating system ("Sopralastic") by Soprema, as well as extent. (details 1 and 4)
  2. New prefinished metal fascia has been deleted (Detail 4)
  3. Additional layer of drywall has been deleted at ceiling (Detail 2)
  4. Detail 4: Delete note "Seal new roofing system to vents. (Typical).".

**B. MECHANICAL:**

1. Refer to attached mechanical addendum #M1 dated 06 November 2014.

END OF ADDENDUM



Elaine Yee, B. Arch, OAA  
CHMIEL ARCHITECTS INC.

**GENERAL NOTES**

1. THE CONTRACTOR SHALL PROTECT ALL AREAS OUTSIDE THE BOUNDARY OF THE WORK AGAINST DAMAGE, SPREAD OF DUST AND DEBRIS THROUGH THE PROVISION OF APPROPRIATE TEMPORARY ENCLOSURES, DUST TIGHT SCREENS OR WEATHER BARRIERS.
2. THE CONTRACTOR SHALL ENSURE THAT ALL PARTITIONS, CEILING AND FLOORS ARE REPAIRED AND FINISHED UPON COMPLETION OF ELECTRICAL ADJUSTMENTS.
- 01.4 - CUTTING, DRILLING AND PATCHING
  1. NO DRILLING, OR TRENCHING IS TO BE PERFORMED WITHOUT THE LANDLORDS AUTHORIZATION. DRILLING OR TRENCHING OF EXISTING CONCEALED SERVICES AS REQUIRED BY THE DESIGN SHALL INCLUDE XRAY OR SCANNING TO CONFIRM ACCEPTABLE LOCATIONS.
  2. CUT RIGID MATERIALS WITH A MASONRY SAW OR A CORE DRILL. IT IS FORBIDDEN TO USE PNEUMATIC OR HAMMER TOOLS ON MASONRY OR CEMENT STRUCTURES WITHOUT PRIOR AUTHORIZATION.
  3. REPAIR ALL WORK WITH NEW PRODUCTS, PURSUANT TO CONTRACTUAL DOCUMENT REQUIREMENTS.
  4. ADJUST THE CONSTRUCTION TIGHTLY AROUND JOINTS, COULPERS, AIR AND ELECTRICAL DUCTS AS WELL AS OTHER ELEMENTS PENETRATING WALL, CEILING OR FIRE RATED FLOOR OPENINGS. SEAL COMPLETELY THE SPACES AROUND OPENINGS WITH FIRE STOPPING OR ACQUSTIC MATERIALS, DEPENDING ON THEIR LOCATION, THROUGH THE TOTAL THICKNESS OF THE PERCED ELEMENT.
  5. FINISH SURFACES TO ENSURE UNIFORMITY WITH ADJACENT FINISH COATINGS, FINISH CONTINUOUS SURFACES UP TO THE CLOSEST INTERSECTION BETWEEN TWO ELEMENTS AND FINISH COMPLETELY WHEN THERE IS A GROUPING OF ELEMENTS.
  6. SEAL OPENINGS, INCLUDING CONCEALED SPACE OPENINGS, AND PATCH SURFACES AS PER EXISTING AFTER THE ENTIRETY OF THE WORK, INCLUDING, BUT WITHOUT LIMITATION, DEMOLITION, ELECTRICAL AND MECHANICAL WORK.
- 02.1 - SELECTIVE DEMOLITION
  1. TAKE ALL PROTECTIVE MEASURES NECESSARY TO KEEP ANY TRACE OF DUST OR DEBRIS INCIDENTAL TO THE WORK FROM AREAS ADJACENT TO THE WORK, INCLUDING STAIRS AND CORRIDORS, PROTECT ALL FINISHES OF ADJACENT AREAS LIKELY TO BE AFFECTED BY THE WORK ALONG WITH FINISHES AND ELEMENTS TO BE PRESERVED WITHIN WORKING AREAS. PATCH ALL SURFACES DAMAGED BY THE DEMOLITION WORK TO PROVIDE A CONTINUOUS SURFACE. OVERALL PROTECTION METHODS ARE TO BE APPROVED BY THE OWNER.
  2. LIMIT ACTIVITIES TO WORKING AREAS ONLY.
  3. PERFORM WORK IN COMPLIANCE WITH ONTARIO MINISTRY OF LABOUR OCCUPATIONAL HEALTH AND SAFETY REGULATIONS.
  4. DISMANTLE AND DELIVER ALL MATERIALS AS REQUIRED TO BE RE-USED OR RETURNED TO THE OWNER OR LANDLORD.
  5. DISPOSE OF WASTES AT THE END OF EACH WORKING DAY AND UPON COMPLETION OF THE WORK. THE WORKING AREAS IS TO BE KEPT CLEAN AND ORDENT TO THE OWNER'S SATISFACTION.
- 05.1 - METAL FABRICATIONS
  1. FABRICATE STEEL SUPPORTS IN ACCORDANCE WITH STRUCTURAL ENGINEERS RECOMMENDATIONS. INSTALLATION BY QUALIFIED WORKERS WITH MINIMUM 5 YEARS DOCUMENTED EXPERIENCE AND LICENSED IN THE PROVINCE OF ONTARIO.
  2. SUBMIT DETAIL DRAWINGS SIGNED AND SEALED BY A PROFESSIONAL ENGINEER, LICENSED IN THE PROVINCE OF ONTARIO.
- 06.1 - ROUGH CARPENTRY
  1. PROVIDE AND INSTALL PLYWOOD BACKING INSIDE NEW PARTITIONS TO SUPPORT MILLWORK, WASHROOM ACCESSORIES, AND VIDEO DISPLAY MONITORS AS DETAILED ON THE DRAWINGS, USE 16 MM PLYWOOD, CANADIAN SOFTWOOD PLYWOOD, IN COMPLIANCE WITH CSA Q151 STANDARD, STANDARD CONSTRUCTION GRADE, FOR INDOOR USE ONLY.
  2. PROVIDE AND INSTALL SUBFRAMES AND TRIMS AROUND DOOR AND WINDOW OPENINGS TO ENSURE FRAME SUPPORT, AS INDICATED.
- 07.1 - SEALANTS AND WATERPROOFING
  1. SEALANTS FOR WALLS, OTHER THAN GYPSUM BOARD WALLS, WITHOUT FIRE OR SMOKE RESISTANCE OR ACQUSTIC PROPERTIES, SINGLE COMPONENT, LATEX EMULSION-BASED WITH ACRYLIC RESINS, IN COMPLIANCE WITH CAN/CSG8-19.17 STANDARD. REFERENCE PRODUCT: TREMCO 834 BY TREMCO OR APPROVED EQUIVALENT.
  2. SEALANTS FOR GYPSUM BOARD SURFACES, WITHOUT FIRE OR SMOKE RESISTANCE OR ACQUSTIC PROPERTIES, SINGLE COMPONENT, LATEX EMULSION-BASED WITH ACRYLIC RESINS, IN COMPLIANCE WITH CAN/CSG8-19.17 STANDARD. REFERENCE PRODUCT: TREMCO 834 BY TREMCO OR APPROVED EQUIVALENT.
  3. ROOF WATERPROOFING - SOPRALASTIC 123 WATERPROOFING COATING WITH SOPRALASTIC 124 ALU PROTECTIVE COATING, BY SOPREMA. PREPARE ROOF AS PER MANUFACTURER'S RECOMMENDATIONS PRIOR TO APPLICATION OF PRODUCT. AT LOCATIONS OF CRACKS, SPREAD A FIRST LAYER OF SOPRALASTIC 123 AND COVER WITH A MEMBRANE-TYPE FABRIC STRIP, SPREAD IN THE DIRECTION OF WATER FLOW. THE SECOND LAYER OF SOPRALASTIC 123 SHALL BE APPLIED OVER THE WORKABLE VISCOUSLY BEER TO MANUFACTURERS RECOMMENDATIONS FOR APPLICATION, STORAGE AND HANDLING OF PRODUCT. CONTRACTOR TO CONFIRM COMPATIBILITY WITH EXISTING ROOF PRODUCTS PRIOR TO PROCEEDING WITH WORK AND OBTAINING OF PRODUCT.
  4. HIGH DENSITY FOAM - EXTRUDED POLYURETHAN FOAM, 32 KG/M3 DENSITY, FOAM BAKER, SIZE AS RECOMMENDED BY MANUFACTURER.
- 07.2 - INSULATION
  1. BLANKET INSULATION TO ASTM C 534-02, SPECIFICATION FOR MINERAL FIBRE BLANKET THERMAL INSULATION FOR COMMERCIAL, AND INDUSTRIAL APPLICATIONS.

2. FOR FIRE STOPPING AND SMOKE SEALS AT OPENINGS AROUND PENETRATIONS FOR CONDUIT AND PIPES: ELASTOMERIC SEAL.
3. FOR VERTICAL JOINTS: NON-SAGGING.
- 08.1 - EXTERIOR INSULATED / INTERIOR STEEL DOORS & FRAMES
  1. MANUFACTURED BASED ON DETAILS PROVIDED AND IN COMPLIANCE WITH THE CANADIAN MANUFACTURING SPECIFICATIONS FOR METAL DOORS AND FRAMES, 2000. DOCUMENT PUBLISHED BY THE CANADIAN STEEL DOOR AND FRAME MANUFACTURERS ASSOCIATION (CSDFMA).
  2. CUT, REINFORCE, PUNCH OUT AND TAP FRAMES WHERE REQUIRED TO ACCOMMODATE FOR MORTISE-MOUNTED HARDWARE ITEMS. REINFORCE FRAMES TO ACCOMMODATE FOR SURFACE-MOUNTED HARDWARE ITEMS. MINIMUM STAY PLATE THICKNESS 3MM.
  3. FRAMES, GALVANIZED STEEL, IN COMPLIANCE WITH ASTM A527, ZINC COATING 2001, WITH ACCURATELY WEIBED JOINTS WELDED AT THE PLANT AND DELIVERED IN ONE PIECE. CONTINUOUS WELDING, NO WELDING ON SITE. EXTERIOR FRAMES: 1.6MM WEIBED THERMALLY BROKEN TYPE CONSTRUCTION. INTERIOR FRAMES: 1.6MM WELDED TYPE CONSTRUCTION.
  4. RATED DOOR / FRAMES IN ACCORDANCE WITH NFPA 80, STANDARD FOR FIRE DOORS.
  5. DOOR CORES - HONEYCOMB CORE CONSTRUCTION WITH STIFFENED FACE. INSULATED CORES TO BE POLYSTYRENE CORE LAMINATED UNDER PRESSURE SHEETS TO BE COMPRISED OF HOT DIPPED GALVANIZED STEEL SHEET TO ASTM A653M, A775 S416 FINISH, TO 1.6MM THICKNESS WITH HONEYCOMB CORE LAMINATED UNDER PRESSURE TO FACE SHEETS.
  6. DOOR THICKNESS: 158MM.
  7. THERMALLY BROKEN DOORS AND FRAMES: FABRICATE THERMALLY BROKEN DOORS BY USING INSULATED CORE AND SEPARATING EXTERIOR PARTS FROM INTERIOR PARTS WITH CONTINUOUS INTERLOCKING THERMAL BREAKS. THERMAL BREAKS RIGID POLYVINYLCHLORIDE EXTRUSION CONFORMING TO CSG8 41-6P-19MA.
  8. GASK PERIMETER OF FRAMES BETWEEN FRAME AND ADJACENT MATERIAL.
  9. COMPLY WITH MANUFACTURER'S WRITTEN RECOMMENDATIONS OR SPECIFICATIONS FOR HANDLING, STORAGE AND INSTALLATION.
  10. WARRANTY: 3 YEARS.
  11. REFER TO DOOR HARDWARE AND HARDWARE SCHEDULES ON DWG A-101 AND TO NRC FINISH HARDWARE SPECIFICATION SECTION 08 71 00.
- 09.1 - GYPSUM PARTITIONS
  1. REFERENCE STANDARDS: GYPSUM PARTITIONS IN COMPLIANCE WITH CAN/CSA-A82.27 STANDARD, CGC MANUAL, AND PLAIN DETAILS.
  2. STANDARD BOARDS: IN COMPLIANCE WITH CAN/CSA-A82.27 STANDARD, TYPE X, THICKNESS INDICATED, 1,220 MM WIDE AND MAXIMUM PRACTICAL LENGTH.
  3. JOINTING PRODUCTS FOR GYPSUM BOARDS: IN COMPLIANCE WITH CAN/CSA-A82.31M STANDARD AND AS PER MANUFACTURER'S RECOMMENDATIONS.
  4. NON-LOADBEARING CHANNEL STUD FRAMING TO ASTM C 645, STUD DEPTH AS INDICATED, THICKNESS 20 GAUGE, "HOT DIPPED GALVANIZED STEEL SHEET" (KNOCKOUT SERVICE HOLES OF 38 MM X 51 MM AND 38MM, AT 460 MM C/C, FOLLOW MANUFACTURER'S RECOMMENDATIONS FOR GAUGE OR WALL MOUNTS HIGHER THAN 4,700 MM).
  5. LOWER, TOP AND LATERAL TRACKS: SECTION: U, THICKNESS (BARE STEEL ONLY) SAME AS STUDS.
  6. DEFLECTION TRACKS: SECTION: U, WIDTH: 3 MM MORE THAN TOP TRACKS, DEPTH: 50 MM EXCEPT OTHERWISE INDICATED IN DRAWINGS.
  7. STIFFENERS AND BRIDGINGS: SECTION: U, THICKNESS (BARE STEEL ONLY) OF 1.52 MM, ANGLES FOR BRIDGING INSTALLATION: L-SHAPED, SAME THICKNESS OR SUPERIOR AS BRIDGINGS.
  8. FURRING CHANNELS: THICKNESS (BARE STEEL ONLY), EXCEPT OTHERWISE INDICATED, 0.38 MM.
  9. ACQUSTIC INSULATION: MINERAL FIBER ACQUSTICAL BATT MANUFACTURED EXPRESSLY FOR THIS PURPOSE, IN COMPLIANCE WITH CAN/ULC 5702 STANDARD, THICKNESS INDICATED, FRICTION-FIT TYPE TO FIT STUD SPACINGS, 44 KG/M3 NORMAL DENSITY, REFERENCE PRODUCT: AFB BY ROXUL OR APPROVED EQUIVALENT.
  10. ACQUSTIC SEALANTS: REFERENCE PRODUCTS: ACQUSTICAL SEALANT BY TREMCO, APPLY ACQUSTIC SEALANT AROUND PERIMETER OF ALL SPACINGS AND ON INTERFACE BETWEEN WALL AND FLOOR OR CEILING WHEN FIREPROOF SEALANT IS NOT REQUIRED.
  11. INSTALL INSULATING STRIPS OR A CONTINUOUS BEAD OF ACQUSTICAL CAULKING UNDER ALL PARTITION BOTTOM TRACKS ON EXISTING CONCRETE SLAB.
  12. PROVIDE TWO STUDS EXTENDING FROM FLOOR TO CEILING AT EACH SIDE OF OPENINGS WIDER THAN STUD CENTRES SPECIFIED. SECURE STUDS TOGETHER, 50 MM APART USING COLUMN CLIPS OR OTHER APPROVED MEANS OF FASTENING PLACED ALONGSIDE FRAME ANCHOR CLIPS.
  13. GYPSUM BOARD JOINTS TO BE STAGGERED ON EACH SIDE OF METAL STUDS.
  14. ALL EXISTING GYPSUM PARTITIONS, COLUMNS AND BULKHEADS AFFECTED BY RENOVATIONS TO BE PATCHED, MADE GOOD, SANDED AND PRIMED READY TO RECEIVE NEW PAINT FINISH.
  15. ALL NEW GYPSUM BOARD PARTITIONS TO BE TAPED, SANDED AND PRIMED READY TO RECEIVE NEW PAINT FINISH.
  16. GLASS PAN GYPSUM SUBSTRATE FOR USE AS SHEATHING TO ASTM C1373 OR USE MANUFACTURER RECOMMENDED FIBREGLASS MESH TAPE AND COMPOUND AT JOINTS.
- 09.2 - PAINT
  1. REFERENCE STANDARDS: EXCEPT IF INDICATED, USE ONLY PAINT MATERIALS LISTED ON THE CSG8 QUALIFIED PRODUCTS LIST, CURRENT EDITION, PAINT MATERIALS FOR EACH COATING SYSTEM TO BE PROVIDED BY A SINGLE MANUFACTURER (I.E. SICO, PLANT & LAMBERT OR APPROVED ALTERNATE).
  2. SAMPLES: SUBMIT FOR APPROVAL, 210 MM X 275 MM SAMPLE FOR EACH COLOUR.

3. SURFACE PREPARATION:
  1. PREPARE WOOD SURFACES IN COMPLIANCE WITH ONGC 8506P-1M STANDARD, APPLY VINYL SEALER IN COMPLIANCE WITH CAN/CSG8-1.126M STANDARD OVER KNOTS AND RESINOUS AREAS. APPLY WOOD FILLER TO NAIL HOLES AND CRACKS.
  2. PREPARE SHOP PRIMED STEEL SURFACES WITH A PRODUCT IN COMPLIANCE WITH CAN/CSG8-1.40M AND ONGC 85-6P-14M STANDARDS.
  3. PREPARE GALVANIZED STEEL AND ZINC COATED STEEL SURFACES IN COMPLIANCE WITH ONGC 85-6P-16M STANDARD. WASH WITH TRISODIUM PHOSPHATE SOLUTION AND RINSE THOROUGHLY.
  4. PREPARE MASONRY, STUCCO AND CONCRETE SURFACES IN COMPLIANCE WITH ONGC 85-6P-31M STANDARD.
  5. PREPARE GYPSUM BOARD SURFACES IN COMPLIANCE WITH ONGC 85-6P-33M STANDARD. FILL SMALL CRACKS WITH PATCHING COMPOUND.
4. CLEAN SURFACES TO BE PAINTED WHERE INDICATED, INCLUDING DUCTWORK AND CONDUITS.
5. SAND AND DUST BETWEEN EACH COAT TO REMOVE DEFECTS VISIBLE FROM A DISTANCE OF 1.5 M.
6. FINISH TOP, BOTTOM, EDGES AND CUT-OUTS OF DOORS AFTER HITTING AS SPECIFIED FOR DOOR SURFACES. DO NOT PAINT OVER ULC LABELS.
7. PAINT EXPOSED CONDUITS, PIPING, HANGERS, DUCTWORK AND ELECTRICAL EQUIPMENT. EXPOSED MECHANICAL AND ELECTRICAL DUCTWORK TO MATCH COLOUR OF ADJACENT WALLS AND CEILINGS. DO NOT PAINT OVER PREPARED ELEMENTS, NAMEPLATES AND LABELS.
8. USE PRODUCTS WITH SAME COLOUR AND SAME SHEEN AS EXISTING FINISH TO PATCH EXISTING SURFACES AFFECTED BY WORK. PAINT UP TO NEXT VERTICAL JOINT. USE PRODUCTS COMPATIBLE WITH EXISTING PRODUCTS.
9. FORMULA NO. 1 FOR DOORS / FRAMES
  1. ONE COAT ACRYLIC LATEX PRIMER SEALER, REFERENCE PRODUCT: 160-135 BY SICO.
  2. TWO COATS ACRYLIC LATEX EXTERIOR PAINT SEMI-GLOSS FINISH, REFERENCE PRODUCT: 817 BY SICO OR EQUIVALENT. COLOUR TO MATCH EXISTING DARK GREEN COLOUR PRESENT ON ADJACENT DOORS. SUBMIT SAMPLES FOR REVIEW.
10. FORMULA NO. 2 FOR INTERIOR WALLS, GYPSUM BOARD
  1. ONE COAT LATEX PRIMER SEALER, REFERENCE PRODUCT: 870-130 BY SICO, OR EQUIVALENT.
  2. TWO COATS LATEX INTERIOR PAINT, SEMI-GLOSS FINISH, REFERENCE PRODUCT: 874 BY SICO, OR EQUIVALENT. COLOUR TO MATCH INTERIOR WALLS AT SOUTH BUILDING. SUBMIT SAMPLES FOR REVIEW.
11. FORMULA NO. 3 FOR INTERIOR CEILINGS, GYPSUM BOARD
  1. ONE COAT LATEX PRIMER SEALER, REFERENCE PRODUCT: 870-130 BY SICO, OR EQUIVALENT.
  2. TWO COATS LATEX INTERIOR PAINT, MATTE FINISH, REFERENCE PRODUCT: 874-112 BY SICO, OR EQUIVALENT. COLOUR TO MATCH INTERIOR WALLS AT SOUTH BUILDING. SUBMIT SAMPLES FOR REVIEW.
12. FORMULA NO. 4 FOR INTERIOR SHOP PRIMED FERROUS METAL SURFACES
  1. TOUCH UP WITH ANTI-CORROSIVE PRIMER, REFERENCE PRODUCT: 925-2008Y SICO, OR EQUIVALENT.
  2. PRIME COAT: REFERENCE PRODUCT: 925-2008Y SICO, OR EQUIVALENT.
  3. TWO COATS LATEX PAINT, SEMI-GLOSS FINISH, REFERENCE PRODUCT: 886 BY SICO, OR EQUIVALENT.

**PROJECT CLOSE-OUT**

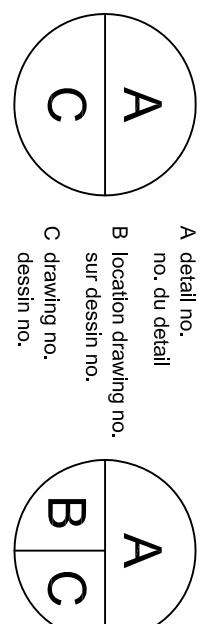
1. SUBSTANTIAL PERFORMANCE
  - a. WHEN THE G.C. CONSIDERS THE WORK TO BE SUBSTANTIALLY PERFORMED, THEY SHALL SUBMIT WRITTEN CERTIFICATION THAT THE CONTRACT DOCUMENTS HAVE BEEN REVIEWED, THAT THE WORK HAS BEEN INSPECTED FOR COMPLIANCE WITH THE CONTRACT DOCUMENTS, THE CERTIFICATION SHALL FURTHER STATE THAT ALL EQUIPMENT AND SYSTEMS HAVE BEEN TESTED IN THE PRESENCE OF THE OWNER'S REPRESENTATIVE AND ARE OPERATIONAL. THE CERTIFICATION SHALL STATE THAT THE WORK IS SUBSTANTIALLY PERFORMED AND READY FOR REVIEW.
  - b. WITHIN TEN (10) DAYS OF RECEIPT OF THE G.C. CERTIFICATION, THE CONSULTANT WILL INSPECT THE WORK TO VERIFY THE STATUS OF COMPLETION. UPON SUBSTANTIAL PERFORMANCE, THE GC SHALL PREPARE AND SUBMIT PROJECT CLOSE OUT MATERIALS.
2. CLOSE-OUT SUBMITTAL AND CERTIFICATE OF OCCUPANCY
  - a. SUBMIT EVIDENCE OF COMPLIANCE WITH THE REQUIREMENTS OF THE GOVERNING AUTHORITIES, INCLUDING BUT NOT LIMITED TO SUCH ITEMS AS CERTIFICATES OF INSPECTION FROM THE VARIOUS DIVISIONS OF THE JURISDICTIONS HAVING AUTHORITIES.
  - b. IT IS THE RESPONSIBILITY OF THE G.C. TO SCHEDULE AND ATTEND ALL INSPECTIONS BY GOVERNING AUTHORITIES AS REQUIRED FOR A TIMELY COMPLETION OF THE WORK TO MEETING THE PROJECT SCHEDULE.
3. GUARANTEE
  - a. THE GUARANTEE SHALL COVER FAULTY OR IMPERFECT MATERIAL AND WORKMANSHIP, DAMAGE OR UNDUE DETRIORATION RESULTING FROM NORMAL USE AND THE SATISFACTORY OPERATION OF ALL ELECTRICAL AND MECHANICAL EQUIPMENT AND DEVICES.
  - b. THE G.C. SHALL COMPLY WITH ALL OTHER GUARANTEES CALLED FOR ELSEWHERE IN THESE SPECIFICATIONS.
4. THE G.C. SHALL PROVIDE THE CONSULTANT AT TIME OF PROJECT CLOSE OUT AS BUILT DRAWINGS, WHICH CONSIST OF REBUILT DRAWINGS INDICATING ANY ADJUSTMENTS MADE DURING CONSTRUCTION DUE TO SITE CONDITIONS OR APPROVED CHANGES.

**NRC FINISH HARDWARE - SECTION 08 71 00**

- PART 1 - GENERAL
- 1.1 REFERENCE STANDARDS
    1. STANDARD HARDWARE LOCATION DIMENSIONS IN ACCORDANCE WITH CANADIAN METRIC STANDARD STEEL DOORS AND FRAMES CONSTRUCTION) PREPARED BY CANADIAN STEEL DOOR AND FRAME MANUFACTURERS ASSOCIATION.
  - 1.2 HARDWARE LIST
    1. SUBMIT HARDWARE SCHEDULE FOR THE DEPARTMENT REPRESENTATIVE'S APPROVAL.
    2. INDICATE HARDWARE PROPOSED, INCLUDING MAKE, MODEL, MATERIAL, FUNCTION, FINISH AND OTHER PERTINENT INFORMATION.
  - 1.3 MAINTENANCE
    1. PROVIDE MAINTENANCE DATA, PARTS LISTS AND MANUFACTURER'S INSTRUCTION FOR EACH TYPE DOOR, CLOSERS, LOCKSETS, DOOR HOLDERS AND FIRE EXIT HARDWARE FOR INCORPORATION INTO MAINTENANCE MANUAL.
  - 1.4 MAINTENANCE MATERIALS
    1. SUPPLY TWO SETS OF WRENCHES FOR DOOR CLOSERS, LOCKSETS AND FIRE EXIT HARDWARE.
  - 1.5 HARDWARE REQUIREMENTS
    1. HARDWARE STANDARDS LIST IN PARAGRAPH 2.2 CAN BE OBTAINED THROUGH NRC STANDING OFFER PROGRAM.
    2. NRC HAS BONDED LOCKSMITH FOR OUR KEVING SYSTEMS ON STANDING CONTRACT. SEE CONTRACT COORDINATOR FOR INFORMATION.
    3. CONTRACTOR WILL BE RESPONSIBLE TO HAVE ALL CYLINDERS KEVED BY NRC BONDED LOCKSMITH ON STANDING OFFER CONTRACT.
    4. CONTRACTOR WILL BE RESPONSIBLE TO CARRY ALL ASSOCIATED COSTS FOR CYLINDERS AND KEVING OF THE SAME WITH NRC BONDED STANDING OFFER LOCKSMITH.

**PART 2 PRODUCTS**

- 2.1 HARDWARE ITEMS
  1. ONLY DOOR CLOSERS, LOCKSETS AND LATCHSETS LIST BELOW.
  2. USE ONE MANUFACTURER'S PRODUCT ONLY FOR ALL SIMILAR ITEMS.
- 2.2 DOOR HARDWARE STANDARDS
  1. HINGES:
    1. INTERIOR DOORS: DOREX 114.3mm x 101.6mm x 179.454 NRP X C15.
    2. EXTERIOR DOORS: DOREX 4 1/4" X 4" X 882222 NRP X C15.
  2. LATCHING DEVICES: APPLY TO ALL BUILDINGS OTHER THAN BUILDINGS M-50 AND M-55.
    1. LOCKSETS "WALE" AU-5407-L x 626.
    2. LOCKSETS "WALE" AU-5401-L x 626.
  3. CLOSERS: STANDARD DUTY ON:
    1. INTERIOR DOORS "MORTON" 16096C-REG x AL PARALLEL ARM.
    2. EXTERIOR DOORS "LCC" 4110 X AL.
  4. ASTRAGAL: PROVIDE 3/8" THICK STAINLESS STEEL ASTRAGAL ON INACTIVE LEAF.
  5. DOOR HOLDER: PROVIDE "HANGER" KICK DOWN DOOR HOLDER 270C- S1 SPRAYED ALUMINUM FINISH.
  6. ABOVE HARDWARE IS STANDARD NRC REQUIREMENTS UNLESS SPECIFIED OR LISTED ON DRAWINGS TO BE OTHERWISE.
- 2.3 FASTENINGS
  1. SUPPLY SCREWS, BOLTS, EXPANSION SHIELDS AND OTHER FASTENING DEVICES REQUIRED FOR SATISFACTORY INSTALLATION AND OPERATION OF HARDWARE.
  2. EXPOSED FASTENING DEVICES TO MATCH FINISH OF HARDWARE.
  3. WHERE PULL IS SCHEDULED ON ONE SIDE OF DOOR AN D PUSH ON OTHER SIDE, SUPPLY FASTENING DEVICES AND INSTALL SO PULL CAN BE SECURED THROUGH DOOR FROM REVERSE SIDE. INSTALL TOSH PLATE TO COVER FASTENERS.
  4. USE FASTENERS COMPATIBLE WITH MATERIAL THROUGH WHICH THEY PASS.
  5. ONLY TRADESMEN COMPETENT IN THE INSTALLATION OF FINISH HARDWARE SHALL BE USED FOR THIS PURPOSE. THE INSTALLER SHALL ADJUST, CLEAN, AND MAKE GOOD ALL INSTALLATIONS OF FINISH HARDWARE TO THE SATISFACTION OF THE ENGINEER.
- 3.1 INSTALLATION
  1. FURNISH DOOR AND FRAME MANUFACTURER WITH COMPLETE INSTRUCTIONS AND TEMPLATES FOR PREPARATION OF THEIR WORK TO RECEIVE HARDWARE.
  2. FURNISH MANUFACTURER'S INSTRUCTIONS FOR PROPER INSTALLATION OF EACH HARDWARE COMPONENT.
  3. WHERE DOOR STOP CONTRACT'S DOOR PULLS, MOUNT STOP TO STRIKE BOTTOM OF PULL.
  4. WEATHER-STRIPPING AND SURFACE SMOKE SEALS SHALL NOT BE INSTALLED UNTIL FINAL COAT OF PAINT HAS BEEN APPLIED TO DOOR AND FRAME AND IS COMPLETELY DRY.
  5. ONLY TRADESMEN COMPETENT IN THE INSTALLATION OF FINISH HARDWARE SHALL BE USED FOR THIS PURPOSE. THE INSTALLER SHALL ADJUST, CLEAN, AND MAKE GOOD ALL INSTALLATIONS OF FINISH HARDWARE TO THE SATISFACTION OF THE ENGINEER.



**BUILDING M51 / INTERIOR WALL PROTECTION**

DESIGNED BY	RAC	COMPIE PAR	
DATE	14-03-10	(YYYY/MM/DD)	
DRAWN BY		DESSEINE PAR	
REVIEWED BY	EV/RAC	EXAMINE PAR	
DATE	14-03-12	(YYYY/MM/DD)	
APPROVED BY		APPROUVE PAR	
DATE		(YYYY/MM/DD)	
TENDER		SOUSMISSION	
PROJECT MANAGER	Administrateur de projets		
PROJECT NO.	39553		
DRAWING NO.	A100		



KEY PLAN / PLANÉRIE	N.T.S.
8	ADDENDUM #1
7	REVISIONS
6	REVISIONS
5	REVISIONS TO 100% DOCUMENTS
4	RE-ISSUED FOR 100% CLIENT REVIEW
3	ISSUED FOR 100% CLIENT REVIEW
2	ISSUED FOR CLIENT 80% REVIEW
1	ISSUED FOR CLIENT REVIEW

project	project
<b>BUILDING M51 ROOF MODIFICATION / INTERIOR WALL PROTECTION</b>	
<b>A</b>	<b>A</b>
<b>C</b>	<b>C</b>
A detail no.	A detail no.
B location drawing no.	B location drawing no.
C delivery no.	C delivery no.
revision no.	revision no.
description	description
date	date

DESIGNED BY	RAC	CONÇU PAR
Date	14-03-10	(yyyy/mm/dd)
DRAWN BY	DESIGNÉ PAR	
Date	(yyyy/mm/dd)	
REVIEWED BY	EXAMINÉ PAR	
Date	14-03-12	(yyyy/mm/dd)
APPROVED BY	APPROUVÉ PAR	
Date	(yyyy/mm/dd)	
TENDER	SOUSMISSION	
PROJECT MANAGER	ADMINISTRATEUR DE PROJETS	
3953	No. du projet	
DRAWING NO.	NO. DU DESSIN	
A101	A101	

DESIGNED BY	RAC	CONÇU PAR
Date	14-03-10	(yyyy/mm/dd)
DRAWN BY	DESIGNÉ PAR	
Date	(yyyy/mm/dd)	
REVIEWED BY	EXAMINÉ PAR	
Date	14-03-12	(yyyy/mm/dd)
APPROVED BY	APPROUVÉ PAR	
Date	(yyyy/mm/dd)	
TENDER	SOUSMISSION	
PROJECT MANAGER	ADMINISTRATEUR DE PROJETS	
3953	No. du projet	
DRAWING NO.	NO. DU DESSIN	
A101	A101	

**GENERAL NOTES**

- CONTRACTOR TO VERIFY ALL DIMENSIONS ON SITE AND REPORT DISCREPANCIES TO DEPARTMENTAL REPRESENTATIVE.
- CONTRACTOR TO LOCATE MATERIAL WHERE DIRECTED BY DEPARTMENTAL REPRESENTATIVE.
- AT LOCATIONS OF DEMOLITION OR RELOCATION OF SERVICES, FILL ANY GAPS IN SPRAY INSULATION WITH POLYURETHANE FOAM TO MAINTAIN CONTINUITY OF THERMAL PERFORMANCE.
- PROVIDE 100 HIGH JOHNSONITE RUBBER BASE OF ALL NEW EXISTING OPSUM BOARD PARTITIONS THAT MEET MEET FLOOR SLABS, COLOUR / STORM CLOUD.
- PROVIDE FIRE SEALANT AS REQUIRED AT ALL RATED STRUCTURE.
- REMOVE HIT LI PRE SEALANTS BETWEEN ROOF BECK AND NEW WALLS TO ENSURE FIRE RAINING CONTINUITY.
- PROVIDE SEALANT AS REQUIRED TO SEAL ALL MECHANICAL / ELECTRICAL EQUIPMENT THAT PENETRATES EXTERIOR WALL ASSEMBLIES.

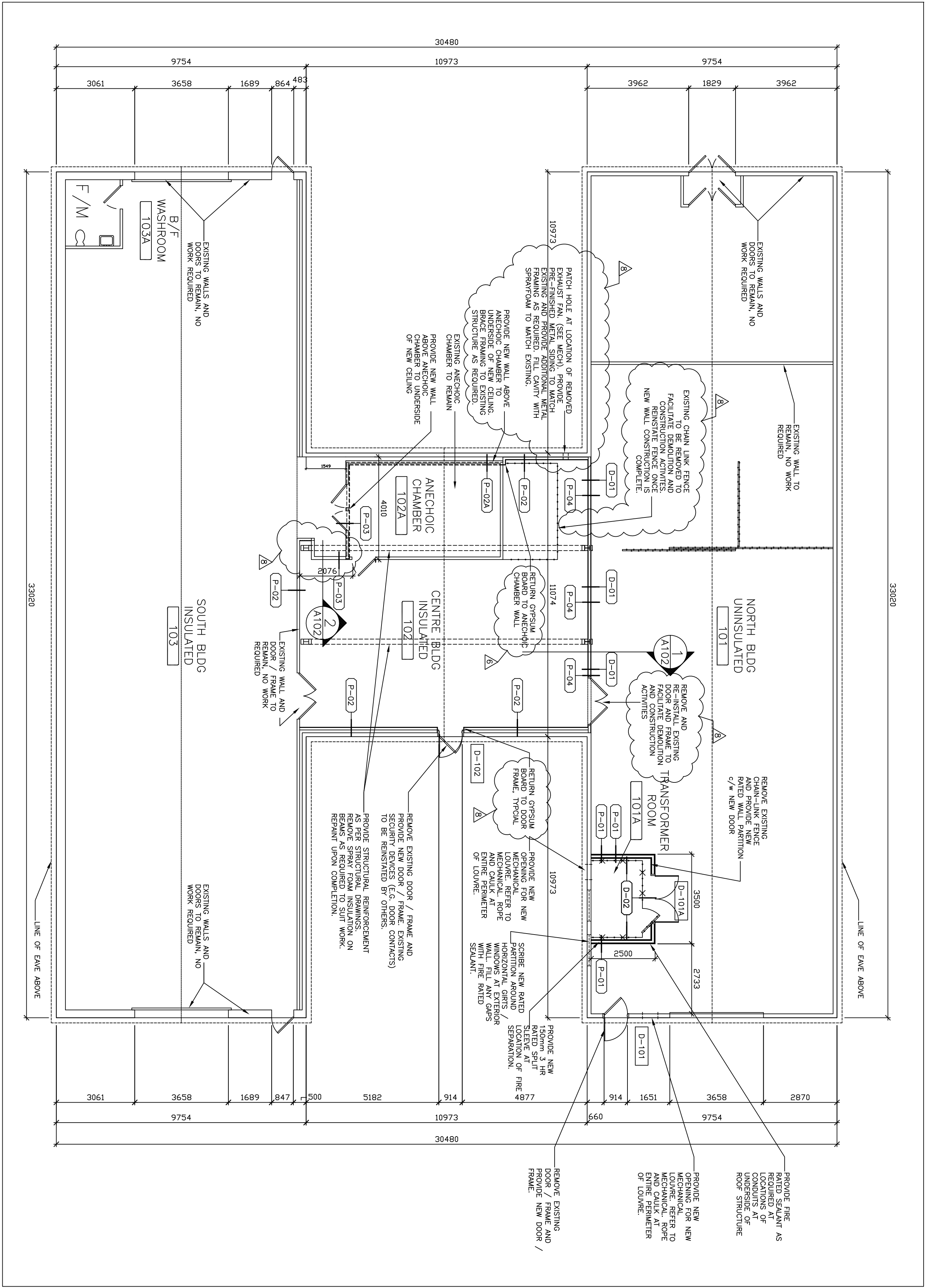
**WALL DEMOLITION**

- E-01 - DEMOLISH EXISTING CHAINLINK FENCE, GATE AND ASSOCIATED POSTS.
- E-02 - FILL HOLES IN CONCRETE FLOOR SLAB TO MATCH EXISTING.

**WALL ASSEMBLIES**

WALL ASSEMBLIES TO RETURN TO GOOD/GOOD/FRAMES/ANCHOCHIC CHAMBER AS REQUIRED TO ENSURE ALL EXISTING SPRAY FOAM IS PROTECTED WITH OPSUM BOARD.

- E-01 - 3 HOUR RATED PARTITION:
  - NEW 2 LAYERS 19.1 TYPE "X" OPSUM BOARD, TAPE.
  - NEW 2 LAYERS 19.1 TYPE "X" OPSUM BOARD, TAPE.
  - NEW 2 LAYERS 19.1 TYPE "X" OPSUM BOARD, TAPE.
  - NEW 2 LAYERS 19.1 TYPE "X" OPSUM BOARD, TAPE.
  - PROVIDE NEOPRENE BARRIER UNDER BASE TRACK AND DEFLECTION TRACK AT UNDERSIDE OF ROOF DECK.
  - PROVIDE NEOPRENE BARRIER UNDER BASE TRACK AND DEFLECTION TRACK AT UNDERSIDE OF ROOF DECK.
  - PROTECT ALL OPENINGS WITH HIT LI FIRE PROTECTION SYSTEM.
- E-02 - 1.6 TYPE "X" OPSUM BOARD, TAPE, SAND, P1 PAINT:
  - 92 STEEL STUDS @ 400 O.C., THE BACK TO STRUCTURE SPRAY FOAM INSULATION.
  - EXISTING STEEL STRUCTURE.
  - EXISTING PREFINISHED STEEL SINGS.
- E-2A - EXTERIOR WALL ABOVE ANCHOCHIC CHAMBER:
  - P16 TYPE "X" OPSUM BOARD, TAPE, SAND, P1 PAINT.
  - 92 STEEL STUDS @ 400 O.C. THE BACK TO STRUCTURE SPRAY FOAM INSULATION TO REMAIN.
  - EXISTING STEEL STRUCTURE TO REMAIN.
  - EXISTING PREFINISHED STEEL SINGS TO REMAIN.
- E-03 - REMOVE NEW / EXTEND NEW 1.6 TYPE "X" OPSUM BOARD, TOP OF WALL / ANCHOCHIC CHAMBER TO U/S OF CEILING, TAPE, SAND, P1 PAINT FINISH.
- E-04 - 1.6 TYPE "X" OPSUM BOARD, TAPE, SAND, P2 PAINT FINISH:
  - NEW 1.6 TYPE "X" OPSUM BOARD, TAPE, SAND, P2 PAINT FINISH.
  - NEW 92 STEEL STUDS @ 400 O.C., SECURED TO STRUCTURE SPRAY FOAM INSULATION.
  - EXISTING STEEL STRUCTURE, NEW STRUCTURAL REINFORCEMENT AS PER CLELAND JARDINE DETAIL.
  - EXISTING DELTAWAZED STANDING SEAM ROOF(F1).
- E-05 - CEILING ASSEMBLY:
  - NEW 1.6 TYPE "X" OPSUM BOARD, TAPE, SAND, P2 PAINT FINISH.
  - NEW 92 STEEL STUDS @ 400 O.C., SECURED TO STRUCTURE SPRAY FOAM INSULATION.
  - EXISTING STEEL STRUCTURE, NEW STRUCTURAL REINFORCEMENT AS PER CLELAND JARDINE DETAIL.
  - EXISTING DELTAWAZED STANDING SEAM ROOF(F1).



**1** GROUND FLOOR PLAN  
 A101 1:100

**DOOR SCHEDULE**

DOOR NO.	ROOM/TO	SIZE	TYPE	PANEL	FINISH	ELEV	FRAME	HARDWARE	COMMENTS
D-101	101	EXTERIOR 914x2032x45	D1	HM1	P3	E1	PSF P4	-	HG1
D-104	101A	EXTERIOR 2-914x2134x45	D1	HM1	P3	E1	PSF P4	25MR	HG2
D-102	102	EXTERIOR 914x2134x45	D1	HM1	P3	E1	PSF P4	-	HG1

**DOOR / FRAME MATERIALS**

**HARDWARE GROUP:**

HG1 = HOLLOW METAL  
 HM = HOLLOW METAL INSULATED  
 PSF = PRESSED STEEL FRAME  
 P3 = PANEL FINISH

**Abbreviations:**

HC1 = DEVICE TO CAN/CCSB-69 1.9 FINISH TO 626.  
 HC2 = STOREROOM FUNCTION LOCK TO ANSI F88, GRADE 1  
 HC3 = DEVICE TO CAN/CCSB-69 1.9 FINISH TO 626.  
 HC4 = DEVICE TO CAN/CCSB-69 1.9 FINISH TO 626.  
 HC5 = DEVICE TO CAN/CCSB-69 1.9 FINISH TO 626.  
 HC6 = DEVICE TO CAN/CCSB-69 1.9 FINISH TO 626.  
 HC7 = DEVICE TO CAN/CCSB-69 1.9 FINISH TO 626.  
 HC8 = DEVICE TO CAN/CCSB-69 1.9 FINISH TO 626.  
 HC9 = DEVICE TO CAN/CCSB-69 1.9 FINISH TO 626.  
 HC10 = DEVICE TO CAN/CCSB-69 1.9 FINISH TO 626.  
 HC11 = DEVICE TO CAN/CCSB-69 1.9 FINISH TO 626.  
 HC12 = DEVICE TO CAN/CCSB-69 1.9 FINISH TO 626.  
 HC13 = DEVICE TO CAN/CCSB-69 1.9 FINISH TO 626.  
 HC14 = DEVICE TO CAN/CCSB-69 1.9 FINISH TO 626.  
 HC15 = DEVICE TO CAN/CCSB-69 1.9 FINISH TO 626.  
 HC16 = DEVICE TO CAN/CCSB-69 1.9 FINISH TO 626.  
 HC17 = DEVICE TO CAN/CCSB-69 1.9 FINISH TO 626.  
 HC18 = DEVICE TO CAN/CCSB-69 1.9 FINISH TO 626.  
 HC19 = DEVICE TO CAN/CCSB-69 1.9 FINISH TO 626.  
 HC20 = DEVICE TO CAN/CCSB-69 1.9 FINISH TO 626.  
 HC21 = DEVICE TO CAN/CCSB-69 1.9 FINISH TO 626.  
 HC22 = DEVICE TO CAN/CCSB-69 1.9 FINISH TO 626.  
 HC23 = DEVICE TO CAN/CCSB-69 1.9 FINISH TO 626.  
 HC24 = DEVICE TO CAN/CCSB-69 1.9 FINISH TO 626.  
 HC25 = DEVICE TO CAN/CCSB-69 1.9 FINISH TO 626.  
 HC26 = DEVICE TO CAN/CCSB-69 1.9 FINISH TO 626.  
 HC27 = DEVICE TO CAN/CCSB-69 1.9 FINISH TO 626.  
 HC28 = DEVICE TO CAN/CCSB-69 1.9 FINISH TO 626.  
 HC29 = DEVICE TO CAN/CCSB-69 1.9 FINISH TO 626.  
 HC30 = DEVICE TO CAN/CCSB-69 1.9 FINISH TO 626.  
 HC31 = DEVICE TO CAN/CCSB-69 1.9 FINISH TO 626.  
 HC32 = DEVICE TO CAN/CCSB-69 1.9 FINISH TO 626.  
 HC33 = DEVICE TO CAN/CCSB-69 1.9 FINISH TO 626.  
 HC34 = DEVICE TO CAN/CCSB-69 1.9 FINISH TO 626.  
 HC35 = DEVICE TO CAN/CCSB-69 1.9 FINISH TO 626.  
 HC36 = DEVICE TO CAN/CCSB-69 1.9 FINISH TO 626.  
 HC37 = DEVICE TO CAN/CCSB-69 1.9 FINISH TO 626.  
 HC38 = DEVICE TO CAN/CCSB-69 1.9 FINISH TO 626.  
 HC39 = DEVICE TO CAN/CCSB-69 1.9 FINISH TO 626.  
 HC40 = DEVICE TO CAN/CCSB-69 1.9 FINISH TO 626.  
 HC41 = DEVICE TO CAN/CCSB-69 1.9 FINISH TO 626.  
 HC42 = DEVICE TO CAN/CCSB-69 1.9 FINISH TO 626.  
 HC43 = DEVICE TO CAN/CCSB-69 1.9 FINISH TO 626.  
 HC44 = DEVICE TO CAN/CCSB-69 1.9 FINISH TO 626.  
 HC45 = DEVICE TO CAN/CCSB-69 1.9 FINISH TO 626.  
 HC46 = DEVICE TO CAN/CCSB-69 1.9 FINISH TO 626.  
 HC47 = DEVICE TO CAN/CCSB-69 1.9 FINISH TO 626.  
 HC48 = DEVICE TO CAN/CCSB-69 1.9 FINISH TO 626.  
 HC49 = DEVICE TO CAN/CCSB-69 1.9 FINISH TO 626.  
 HC50 = DEVICE TO CAN/CCSB-69 1.9 FINISH TO 626.  
 HC51 = DEVICE TO CAN/CCSB-69 1.9 FINISH TO 626.  
 HC52 = DEVICE TO CAN/CCSB-69 1.9 FINISH TO 626.  
 HC53 = DEVICE TO CAN/CCSB-69 1.9 FINISH TO 626.  
 HC54 = DEVICE TO CAN/CCSB-69 1.9 FINISH TO 626.  
 HC55 = DEVICE TO CAN/CCSB-69 1.9 FINISH TO 626.  
 HC56 = DEVICE TO CAN/CCSB-69 1.9 FINISH TO 626.  
 HC57 = DEVICE TO CAN/CCSB-69 1.9 FINISH TO 626.  
 HC58 = DEVICE TO CAN/CCSB-69 1.9 FINISH TO 626.  
 HC59 = DEVICE TO CAN/CCSB-69 1.9 FINISH TO 626.  
 HC60 = DEVICE TO CAN/CCSB-69 1.9 FINISH TO 626.  
 HC61 = DEVICE TO CAN/CCSB-69 1.9 FINISH TO 626.  
 HC62 = DEVICE TO CAN/CCSB-69 1.9 FINISH TO 626.  
 HC63 = DEVICE TO CAN/CCSB-69 1.9 FINISH TO 626.  
 HC64 = DEVICE TO CAN/CCSB-69 1.9 FINISH TO 626.  
 HC65 = DEVICE TO CAN/CCSB-69 1.9 FINISH TO 626.  
 HC66 = DEVICE TO CAN/CCSB-69 1.9 FINISH TO 626.  
 HC67 = DEVICE TO CAN/CCSB-69 1.9 FINISH TO 626.  
 HC68 = DEVICE TO CAN/CCSB-69 1.9 FINISH TO 626.  
 HC69 = DEVICE TO CAN/CCSB-69 1.9 FINISH TO 626.  
 HC70 = DEVICE TO CAN/CCSB-69 1.9 FINISH TO 626.  
 HC71 = DEVICE TO CAN/CCSB-69 1.9 FINISH TO 626.  
 HC72 = DEVICE TO CAN/CCSB-69 1.9 FINISH TO 626.  
 HC73 = DEVICE TO CAN/CCSB-69 1.9 FINISH TO 626.  
 HC74 = DEVICE TO CAN/CCSB-69 1.9 FINISH TO 626.  
 HC75 = DEVICE TO CAN/CCSB-69 1.9 FINISH TO 626.  
 HC76 = DEVICE TO CAN/CCSB-69 1.9 FINISH TO 626.  
 HC77 = DEVICE TO CAN/CCSB-69 1.9 FINISH TO 626.  
 HC78 = DEVICE TO CAN/CCSB-69 1.9 FINISH TO 626.  
 HC79 = DEVICE TO CAN/CCSB-69 1.9 FINISH TO 626.  
 HC80 = DEVICE TO CAN/CCSB-69 1.9 FINISH TO 626.  
 HC81 = DEVICE TO CAN/CCSB-69 1.9 FINISH TO 626.  
 HC82 = DEVICE TO CAN/CCSB-69 1.9 FINISH TO 626.  
 HC83 = DEVICE TO CAN/CCSB-69 1.9 FINISH TO 626.  
 HC84 = DEVICE TO CAN/CCSB-69 1.9 FINISH TO 626.  
 HC85 = DEVICE TO CAN/CCSB-69 1.9 FINISH TO 626.  
 HC86 = DEVICE TO CAN/CCSB-69 1.9 FINISH TO 626.  
 HC87 = DEVICE TO CAN/CCSB-69 1.9 FINISH TO 626.  
 HC88 = DEVICE TO CAN/CCSB-69 1.9 FINISH TO 626.  
 HC89 = DEVICE TO CAN/CCSB-69 1.9 FINISH TO 626.  
 HC90 = DEVICE TO CAN/CCSB-69 1.9 FINISH TO 626.  
 HC91 = DEVICE TO CAN/CCSB-69 1.9 FINISH TO 626.  
 HC92 = DEVICE TO CAN/CCSB-69 1.9 FINISH TO 626.  
 HC93 = DEVICE TO CAN/CCSB-69 1.9 FINISH TO 626.  
 HC94 = DEVICE TO CAN/CCSB-69 1.9 FINISH TO 626.  
 HC95 = DEVICE TO CAN/CCSB-69 1.9 FINISH TO 626.  
 HC96 = DEVICE TO CAN/CCSB-69 1.9 FINISH TO 626.  
 HC97 = DEVICE TO CAN/CCSB-69 1.9 FINISH TO 626.  
 HC98 = DEVICE TO CAN/CCSB-69 1.9 FINISH TO 626.  
 HC99 = DEVICE TO CAN/CCSB-69 1.9 FINISH TO 626.  
 HC100 = DEVICE TO CAN/CCSB-69 1.9 FINISH TO 626.

**PAINT FINISH SCHEDULE**

DESIGNATION	DESCRIPTION
P1	PAINT TO MATCH COLOUR OF INTERIOR WALLS AT SOUTH BUILDING
P2	PAINT TO MATCH COLOUR OF INTERIOR WALLS AT NORTH BUILDING
P3	PAINT TO MATCH GREEN COLOUR OF EXISTING EXTERIOR DOORS
P4	PAINT TO MATCH WHITE COLOUR OF EXISTING PRE-FINISHED METAL SINGS

**NOTES:**

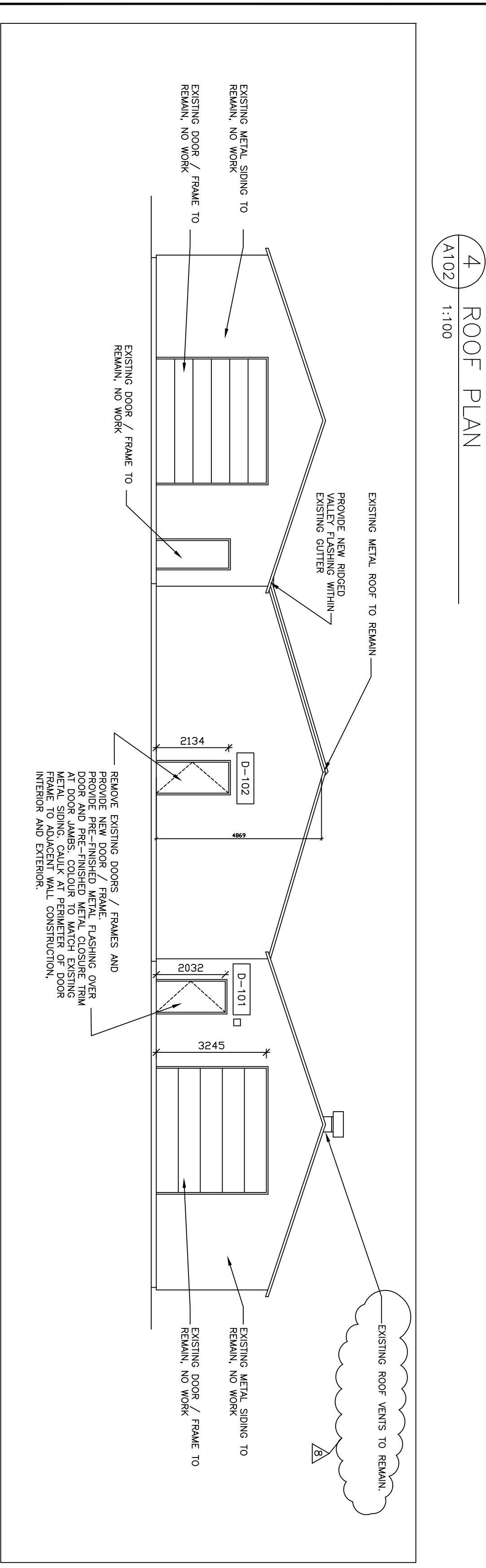
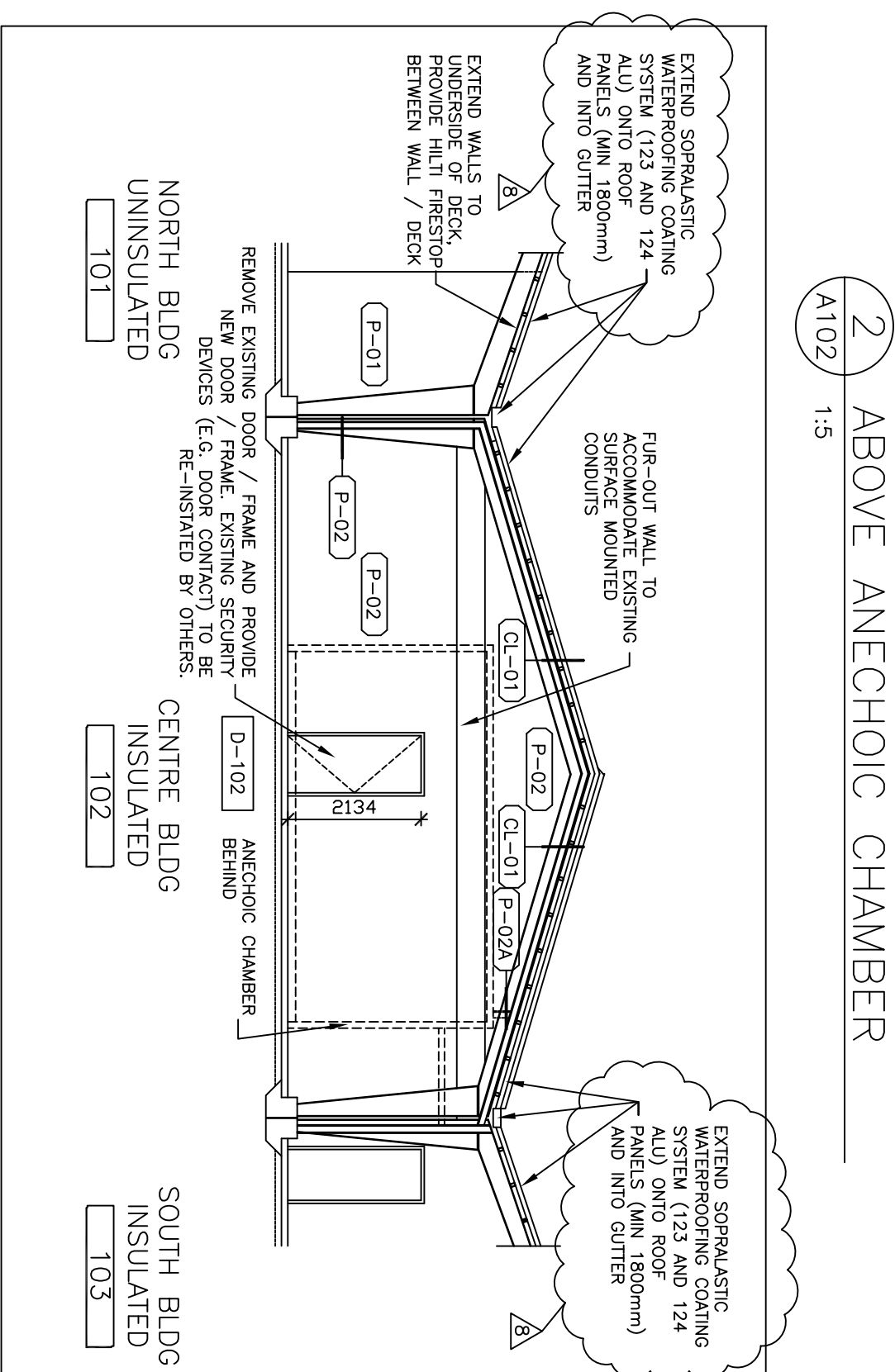
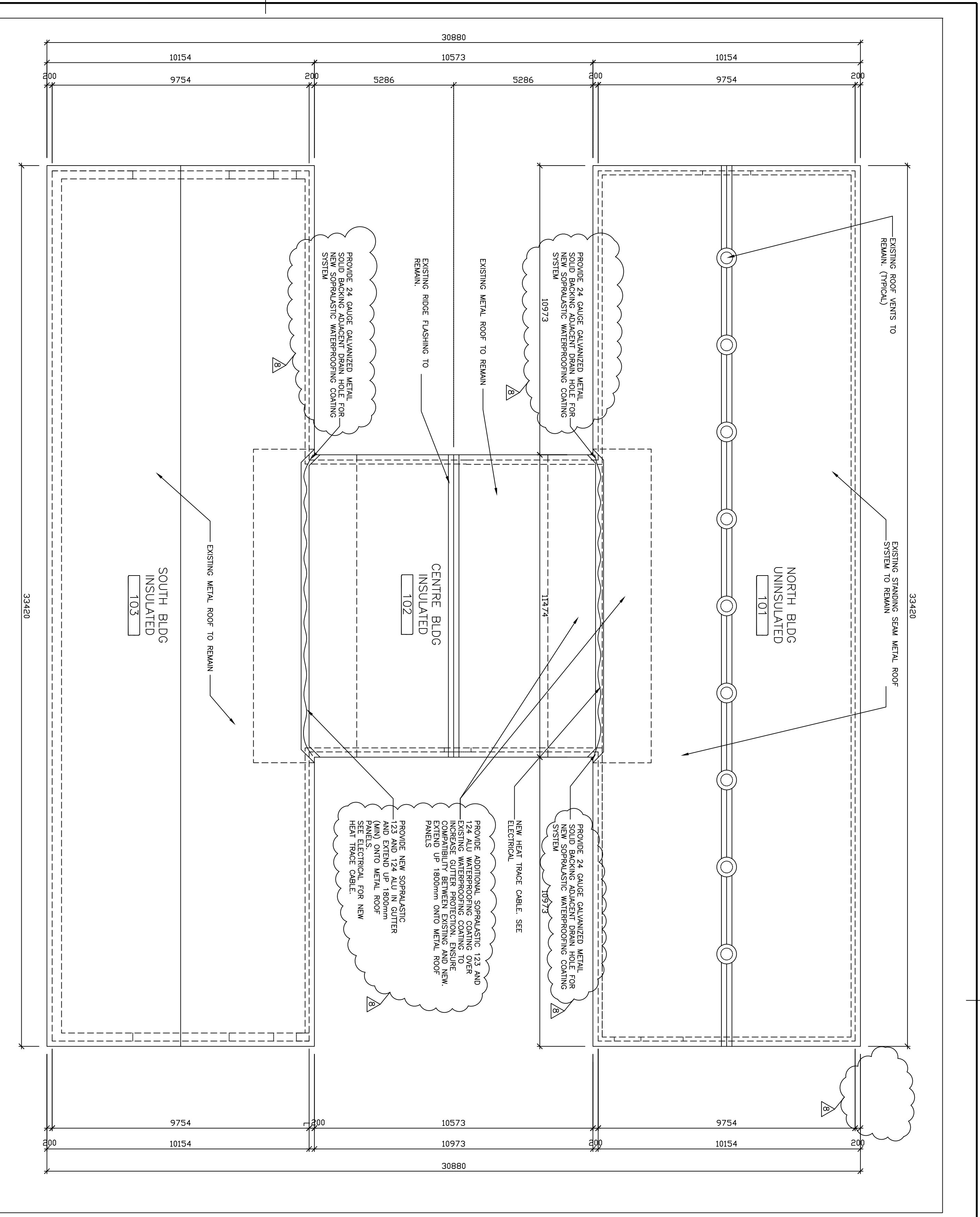
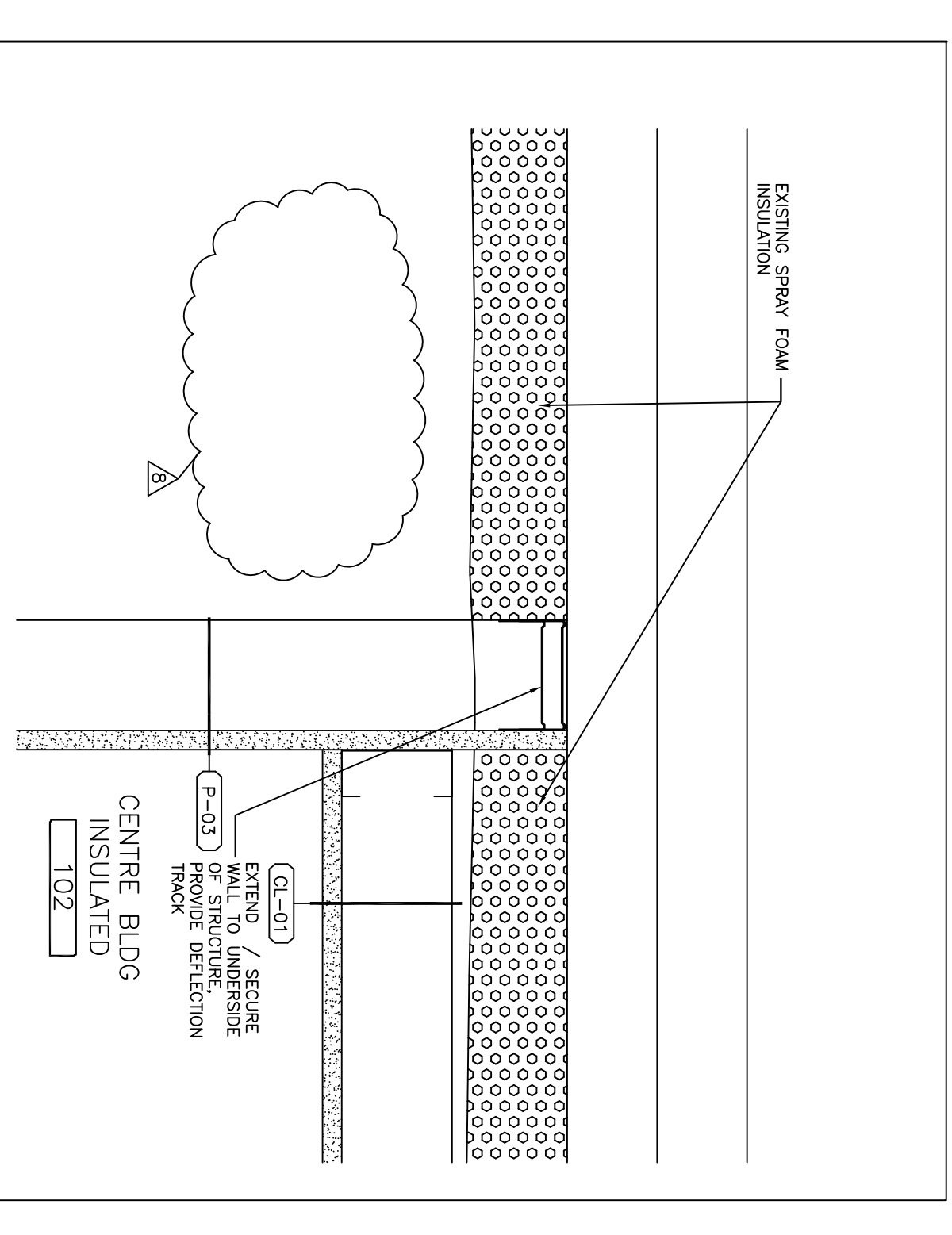
SAMPLES TO BE SUBMITTED (IN DUPLICATE) FOR REVIEW PRIOR TO ORDERING OF MATERIAL.  
 REFER TO 09.2 PAINT ON DRAWING A100 FOR LUSTRES AND PAINT FORMULATIONS.

**2** DOOR / HARDWARE SCHEDULE  
 A101 N.T.S.

**3** PAINT FINISH SCHEDULE  
 A101 N.T.S.

KEY PLAN / PLAN REFERENCE	N.T.S.
8	ADDENDUM #1 14-11-08
7	REVISIONS 14-10-08
6	REVISIONS 14-09-30
5	REVISIONS TO 100% DOCUMENTS 14-08-26
4	RE-ISSUED FOR 100% CLIENT REVIEW 14-08-08
3	ISSUED FOR 100% CLIENT REVIEW 14-07-08
2	ISSUED FOR 99% CLIENT REVIEW 14-06-13
1	ISSUED FOR CLIENT REVIEW 14-05-14

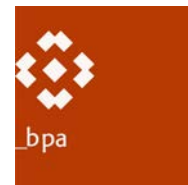
revisions	description	date
1	ISSUED FOR CLIENT REVIEW	14-05-14
2	ISSUED FOR 99% CLIENT REVIEW	14-06-13
3	ISSUED FOR 100% CLIENT REVIEW	14-07-08
4	RE-ISSUED FOR 100% CLIENT REVIEW	14-08-08
5	REVISIONS TO 100% DOCUMENTS	14-08-26
6	REVISIONS	14-09-30
7	REVISIONS	14-10-08
8	ADDENDUM #1	14-11-08



**ROOF PLAN & SECTIONAL DETAILS**

Designed By	RAC	Conçu par	(yyyymmdd)
Date	14-03-10	Date	(yyyymmdd)
Drawn By		Dessiné par	(yyyymmdd)
Date		Date	(yyyymmdd)
Reviewed By	EV/RAC	Examiné par	(yyyymmdd)
Date	14-03-12	Date	(yyyymmdd)
Approved By		Approuvé par	(yyyymmdd)
Date		Date	(yyyymmdd)

Tender / Soumission  
 Project Manager / Administrateur de projets  
 3953  
 No. du projet  
 Drawing no. / No. du dessin  
 A102



## ADDENDUM NO. M1

Project : Building M51 Roof Modification / Interior Wall Protection

Description : Ventilation Modification

Project no. : 8014-061

Division : 23

Prepared By : J. Faubert

Date : 06-11-2014

---

1. This addendum is part of the original drawings and specifications and forms part of the contractual documents. Bidders should ensure that the cost of this addendum is included in the bid amount.
2. Documents:
  - 2.1 Included documents:
    - 2.1.1 Specifications:

–
    - 2.1.2 Drawings nos.:

– SKETCH-M1
3. Description of work:
  - 3.1 Small kitchen exhaust hood and fan is no longer to be re-installed; contractor to remove fan, hood, and all associated accessories.



Ottawa :  
 100-1960 Robertson Road, Suite 100, K2H 5B9  
 T.(613) 596.6454 F.(613) 596.3346  
 www.WBBEngineering.com

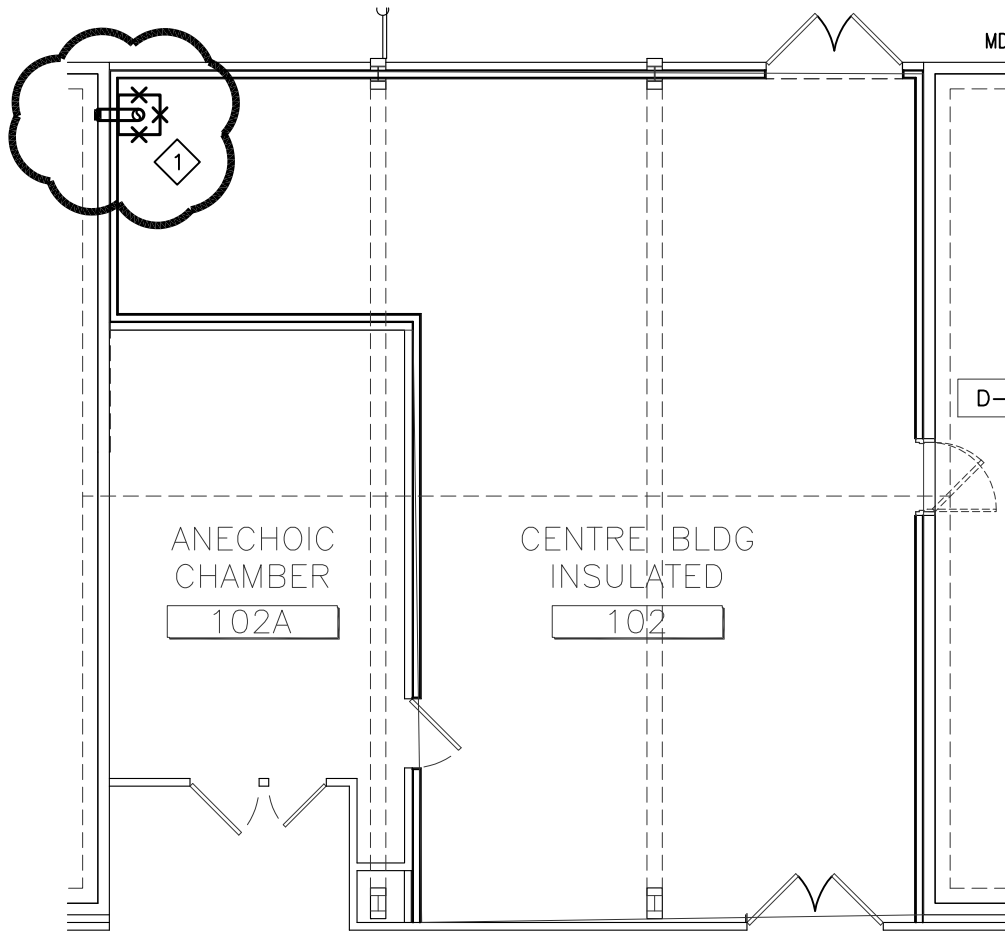
Gatineau :  
 430 de l'hôpital bld, suite 210, J8V 1T7  
 T.(819) 778.2448 F.(819) 778.5031

Consulting Engineers

ISSUED FOR: ADD M1

DRAWING NOTES:

- 1 REMOVE EXISTING EXHAUST HOOD, DUCTWORK AND ALL ASSOCIATED ACCESSORIES.



PROJECT  
**BUILDING M51 ROOF MODIFICATION  
 / INTERIOR WALL PROTECTION**

DRAWING TITLE  
**VENTILATION**

BPA PROJECT #  
**8014-061**

DRAWN  
**JF**

SCALE  
**1:100**

DRAWING NUMBER

DATE  
**06-11-2014**

CHECKED  
**JF**

REVISION  
**00**

**SKE-M1**