

NOTE:
ALL WORK TO NBC 2005
WELDING TO CAN/CSA W59
STEEL TO CAN/CSA S16
GALVANIZING TO CAN/CSA G164
ALL DOCUMENTS LATEST EDITION
ALL PLATE AND BARS TO G40.21M 300W
OR BETTER
ALL PIPE TO ASTM-A53
ALL STEEL SHALL BE GALVANIZED

J.L. Richards & Associates Limited
Consulting Engineers & Planners
Sudbury, Ottawa, Kingston, Ontario

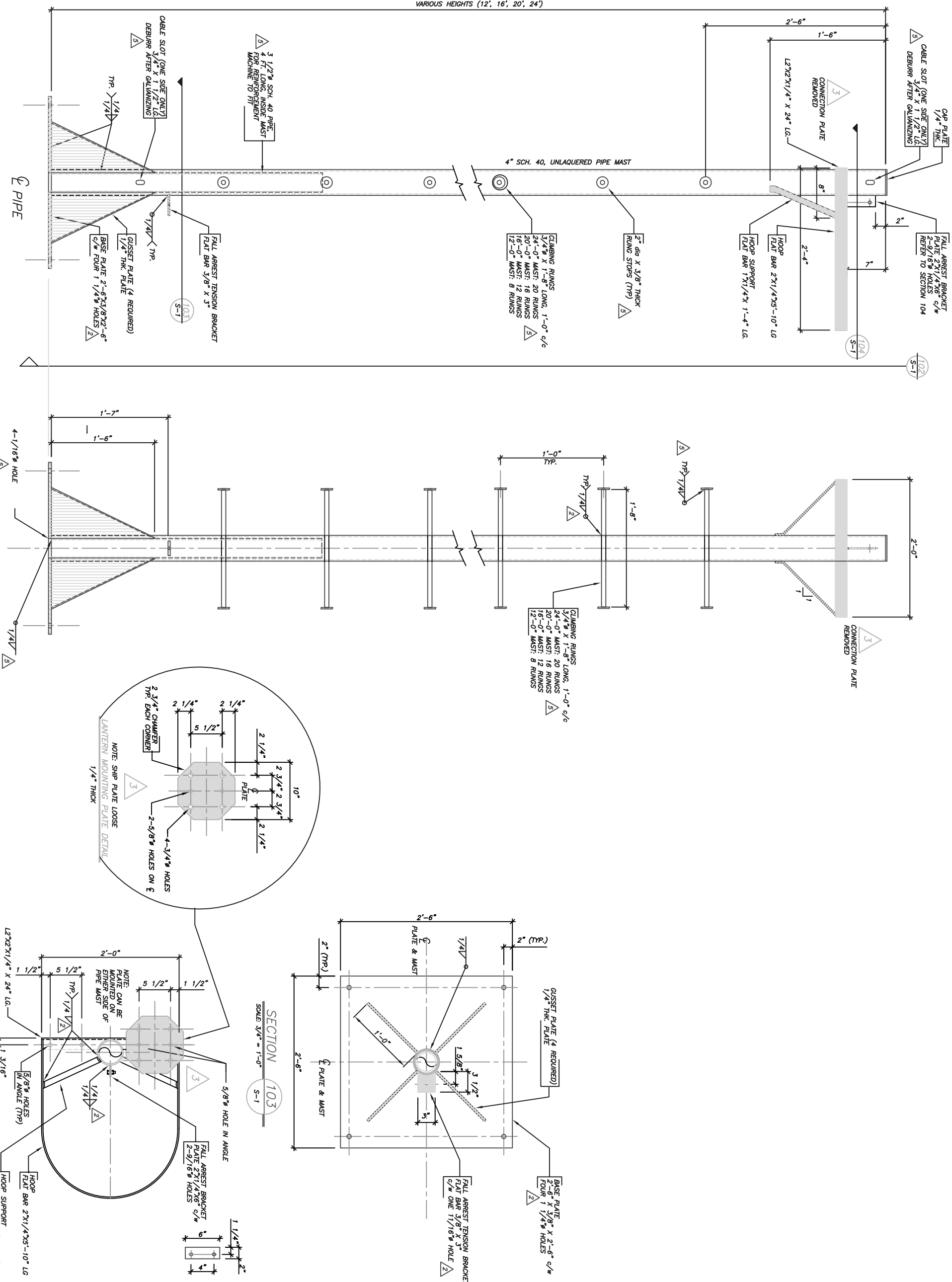
17470-01-S		
5	RUNG LOADS, BASE HOLE AND INNER DETAIL REVERSED. NOTES ADDED	SEP 23/10
4	DESIGN LOADS ADDED	MAY 03/01
3	LANTERN MOUNTING PL. REVERSED SIDE OF PIPE MAST	MAR 30/01
2	AS BUILT	DEC. 19/00
1	ISSUED FOR CONSTRUCTION	NOV. 14/00
NO.	REVISION/ISSUE	DATE

DESIGN LOADS: 4
TOP ANCHOR PLATE 5000 LB. ↑
BOTTOM ANCHOR 1000 LB. ↓

PROJECT:
PIPE MAST
FOR MOUNTING LIGHTS
FOR: CANADIAN COAST GUARD
PARRY SOUND, ONTARIO

FABRICATION DETAILS

DESIGN: EJM	REVISION No.: 5
DRAWN: MSH	DRAWING No.: S-1 or 1
CHECKED: EJM	
DATE: NOV. 14, 2000	
SCALE: AS NOTED	JLR JOB No.: 17470-01-S



PIPE MAST – SIDE VIEW 101
SCALE: 1/2" = 1'-0"

PIPE MAST – FRONT VIEW 102
SCALE: 1/2" = 1'-0"

SECTION 104
SCALE: 1/2" = 1'-0"

SECTION 103
SCALE: 3/4" = 1'-0"