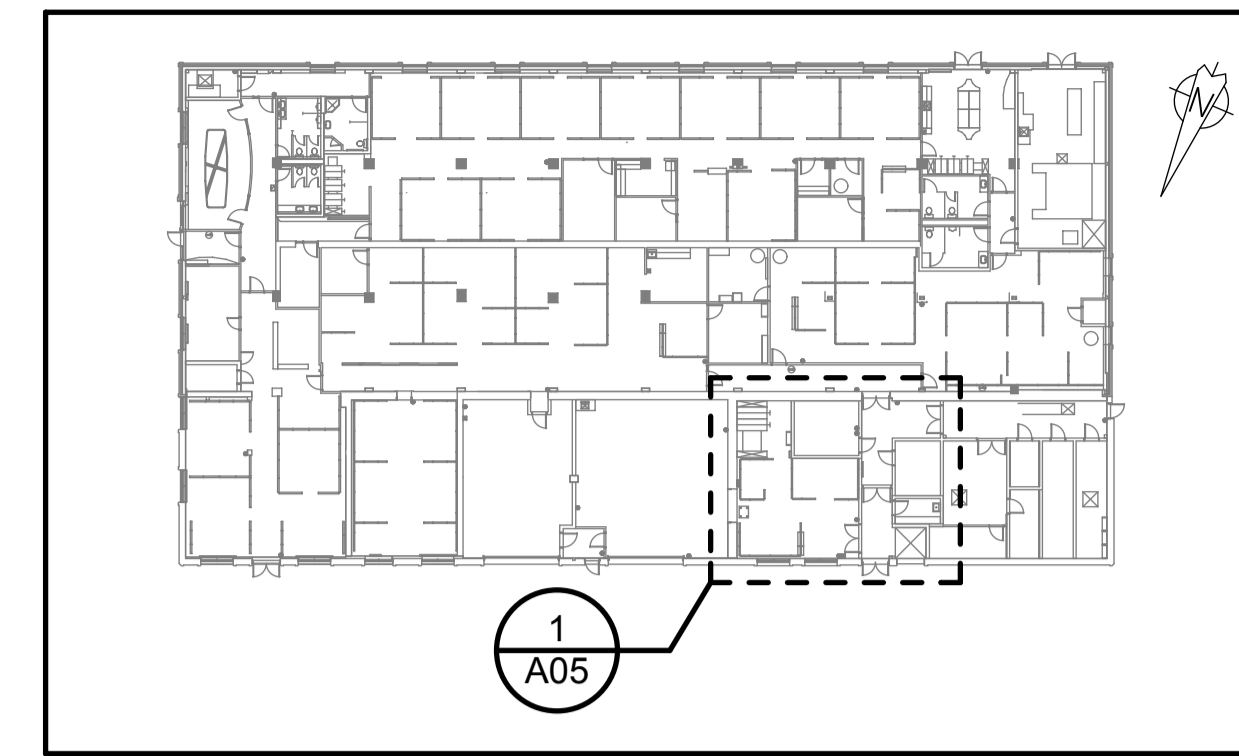


1
A05
PROPOSED REFLECTED CEILING PLAN & WINDOW / EXTERIOR WALL
SCALE: 1:50



2
A05
GROUND FLOOR KEY PLAN
SCALE: 1:500

GENERAL NOTES:

E. GENERAL CONTRACTOR TO PROVIDE THE REQUIRED MECHANICAL AND ELECTRICAL ENGINEERING SERVICES TO SUCCESSFULLY COMPLETE THE CONTENT WITHIN THIS DRAWING PACKAGE. THIS INCLUDES, BUT IS NOT LIMITED TO:

- THE DEMOLITION OR RELOCATION OF EXISTING ELECTRICAL AND MECHANICAL SYSTEMS REQUIRED TO COMPLETE THE SCOPE OF WORK.
- THE DESIGN OF ANY PROPOSED NEW ELECTRICAL AND MECHANICAL SYSTEMS. THE PROPOSED M & E SYSTEMS INCLUDED IN THESE DRAWINGS ARE SCHEMATIC ONLY.
- COMPLETION OF ANY RELATED BUILDING PERMIT AND CONSTRUCTION DOCUMENTS.
- ASSOCIATED CONSTRUCTION REVIEW AND FINAL APPROVAL PROCESS.

THE NEW PROPOSED HVAC SYSTEM INSTALLATION IS THE EXCEPTION (NOTE F).

F. GENERAL CONTRACTOR TO COORDINATE WITH THE NEW PROPOSED HVAC INSTALLATION (SEPARATE PROJECT) FOR THE LOCATION OF SKYLIGHTS, AND THE HVAC INTEGRATION INTO THE NEW PROPOSED SUSPENDED ACOUSTICAL CEILING TILE/GRID (NOTE 29).

NOTE:

COORDINATE WITH THE ELECTRICAL AND MECHANICAL ENGINEERS REGARDING THE REMOVAL OF ALL ELECTRICAL AND MECHANICAL SYSTEMS RELATED TO THE DEMOLITION OF THE EXISTING CEILING AND INSTALLATION OF THE NEW SUSPENDED CEILING. THIS INCLUDES, BUT IS NOT LIMITED TO, THE EXISTING LIGHTING, SPRINKLER SYSTEM, AND EMERGENCY ALARMS AND SIGNAGE. MECHANICAL AND ELECTRICAL ENGINEERS TO DETERMINE WHAT COMPONENTS CAN BE RELOCATED AND REUSED.

GENERAL CONTRACTOR TO PROVIDE ELECTRICAL AND MECHANICAL ENGINEERING SERVICES FOR THE DESIGN, BUILDING PERMIT DOCUMENTS, AND IMPLEMENTATION OF THESE REQUIREMENTS.

Canada

Public Works and Government Services Canada
Travaux publics et services gouvernementaux Canada

HEALTH CANADA SANTÉ CANADA

ILG & ILG

ILG AND ILG INC
ARCHITECTURE & INTERIOR DESIGN
200 General Ave., Ottawa, Ontario K1Z 7W8
Phone: 613 231 2379
ILG and ILG@Architects-InteriorDesigners.com



Contractor to verify all dimensions & conditions on site and immediately notify the consultant of all discrepancies.

revisions	description	date
2	ISSUED FOR TENDER	2014/11/24
1	ISSUED FOR 99% COMPLETION REVIEW	2014/09/30

A C	A detail no. du detail B location drawing no. sur dessin no. C drawing no. dessin no.	A B C
--------	---	----------

project **HEALTH CANADA OCCUPATIONAL HEALTH UNIT (OHU) MODERNIZATION PROJECT** projet

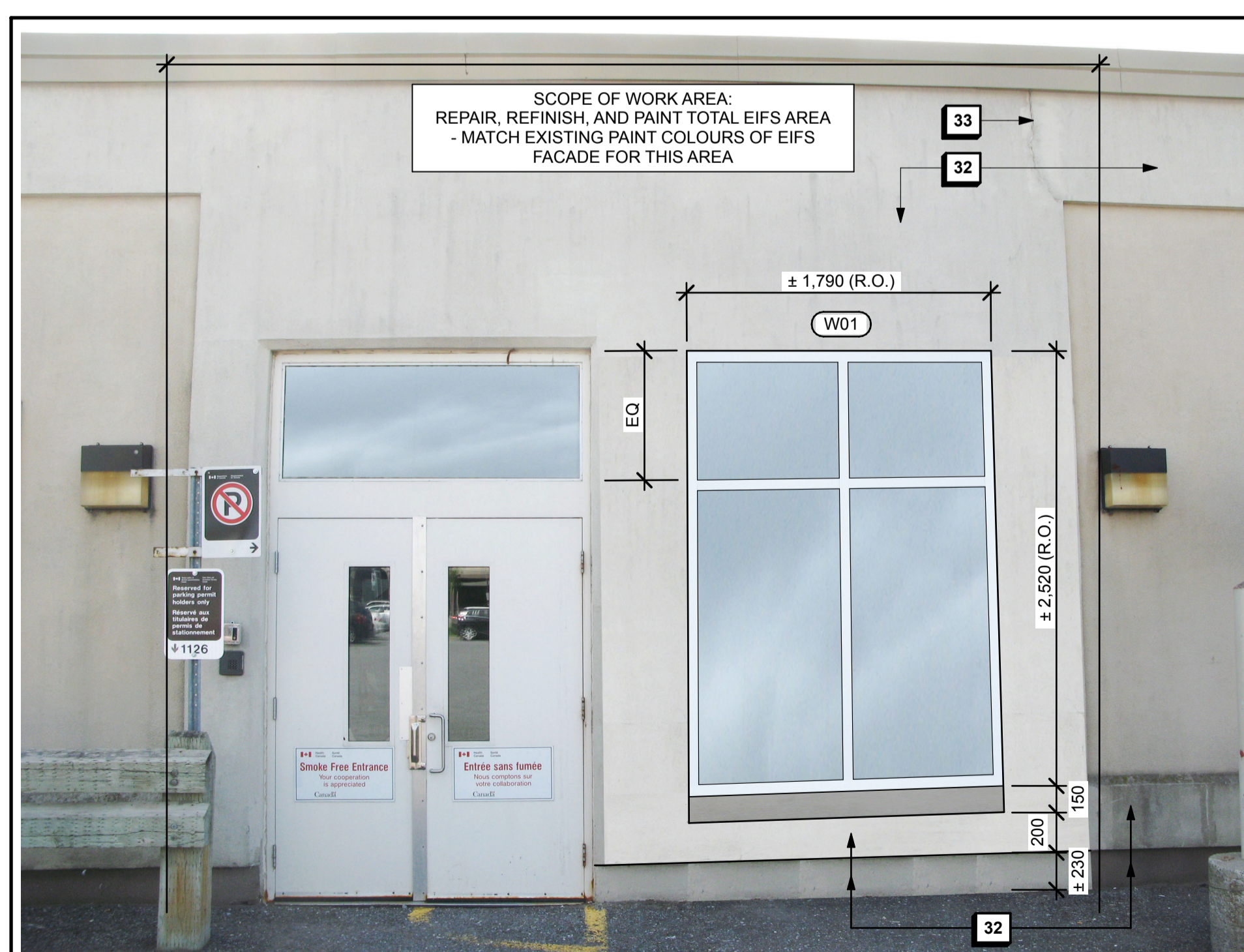
51 CHARDON DRIVEWAY
TUNNEY'S PASTURE

drawing **OHU: GROUND FLOOR PROPOSED REFLECTED CEILING PLAN AND WINDOW / EXT. WALL** dessin

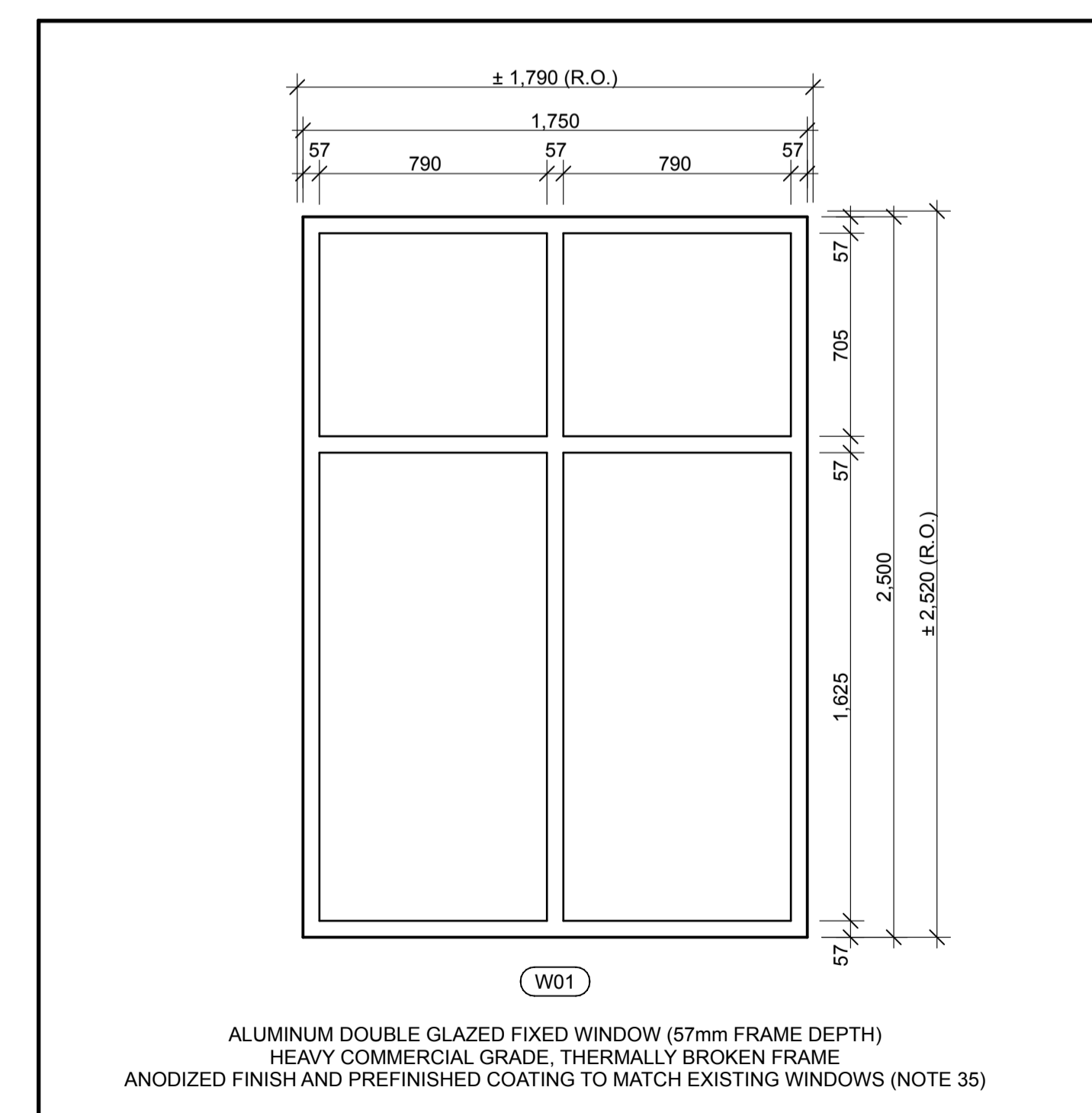
Designed By	Conçu par
Date	(yyyy/mm/dd)
Drawn By	Dessiné par
Date	2014/11/24 (yyyy/mm/dd)
Reviewed By	Examiné par
Date	2014/11/24 (yyyy/mm/dd)
Approved By	Approuvé par
Date	(yyyy/mm/dd)
Tender	Soumission
Project Manager	Administrateur de projets
Project no.	No. du projet

H-018221

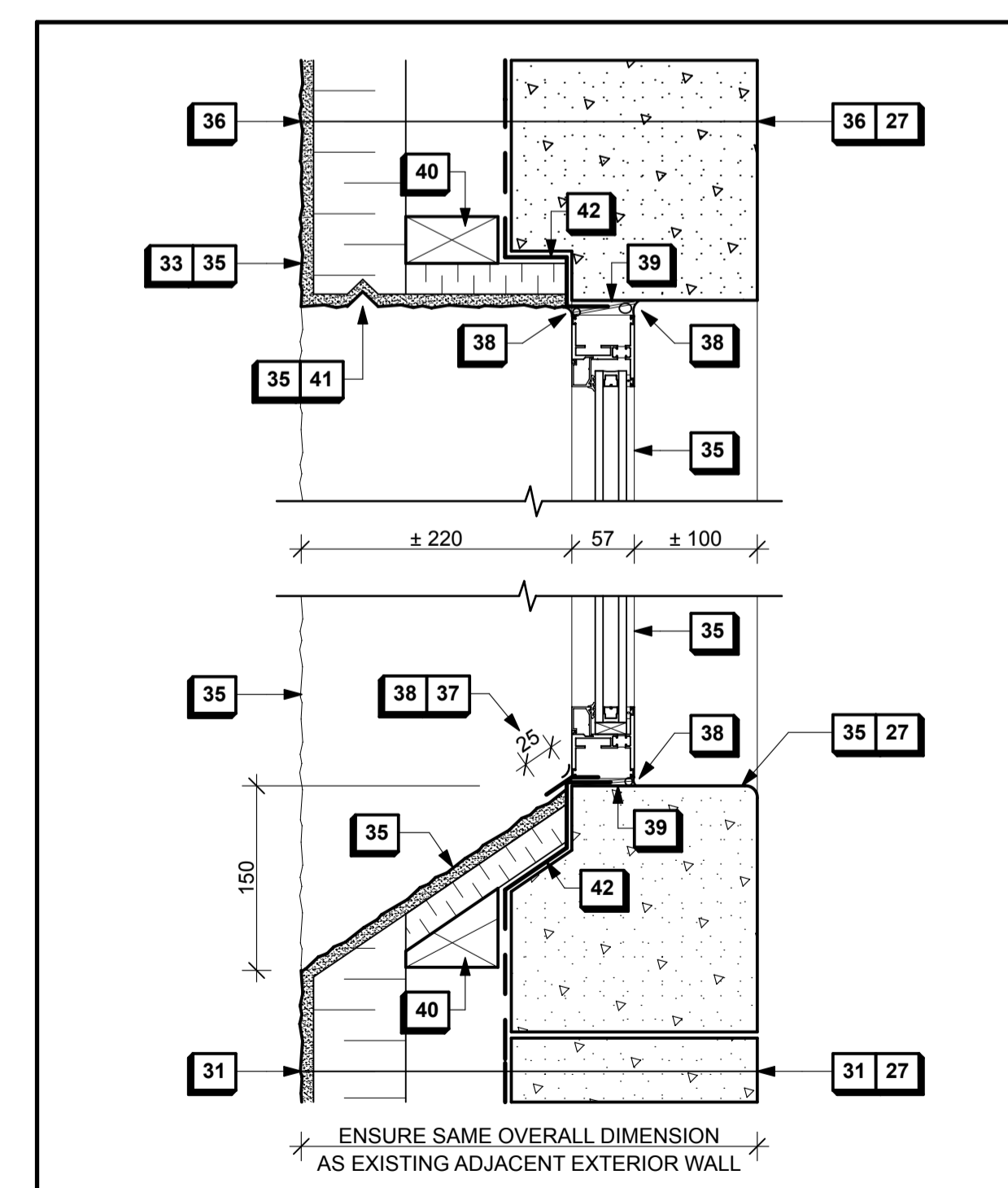
Drawing no. **A05** No. du dessin



3
A05
PROPOSED WINDOW / EXTERIOR WALL ELEVATION
NOT TO SCALE



4
A05
PROPOSED WINDOW (W01) ELEVATION
SCALE: 1:20



5
A05
WINDOW (W01) HEAD AND SILL DETAIL
SCALE: 1:5