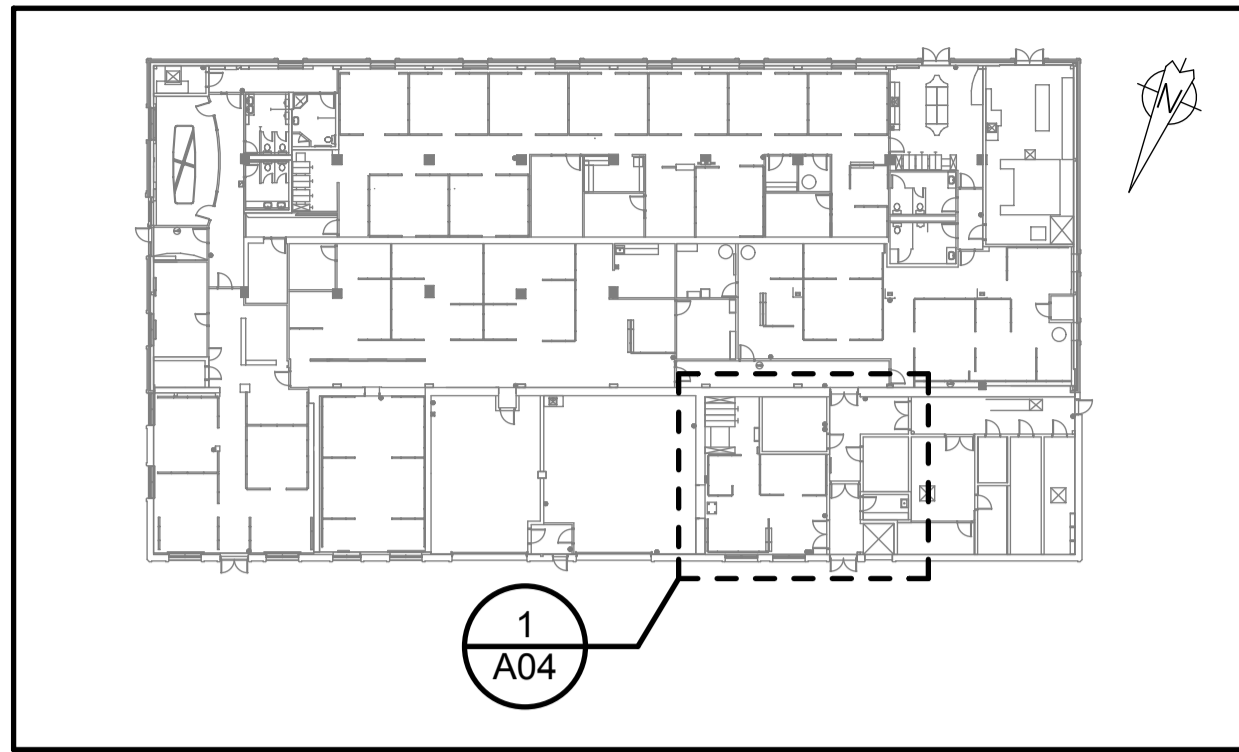


1
A04 EXISTING REFLECTED CEILING PLAN - DEMOLITION
SCALE: 1:50



2
A04 GROUND FLOOR KEY PLAN
SCALE: 1:500

GENERAL NOTES:

E. GENERAL CONTRACTOR TO PROVIDE THE REQUIRED MECHANICAL AND ELECTRICAL ENGINEERING SERVICES TO SUCCESSFULLY COMPLETE THE CONTENT WITHIN THIS DRAWING PACKAGE. THIS INCLUDES, BUT IS NOT LIMITED TO:

- THE DEMOLITION OR RELOCATION OF EXISTING ELECTRICAL AND MECHANICAL SYSTEMS REQUIRED TO COMPLETE THE SCOPE OF WORK.
- THE DESIGN OF ANY PROPOSED NEW ELECTRICAL AND MECHANICAL SYSTEMS. THE PROPOSED M & E SYSTEMS INCLUDED IN THESE DRAWINGS ARE SCHEMATIC ONLY.
- COMPLETION OF ANY RELATED BUILDING PERMIT AND CONSTRUCTION DOCUMENTS.
- ASSOCIATED CONSTRUCTION REVIEW AND FINAL APPROVAL PROCESS.

THE NEW PROPOSED HVAC SYSTEM INSTALLATION IS THE EXCEPTION (NOTE F).

F. GENERAL CONTRACTOR TO COORDINATE WITH THE NEW PROPOSED HVAC INSTALLATION (SEPARATE PROJECT) FOR THE LOCATION OF SKYLIGHTS, AND THE HVAC INTEGRATION INTO THE NEW PROPOSED SUSPENDED ACOUSTICAL CEILING TILE/GRID (NOTE 29).

NOTE:

COORDINATE WITH THE ELECTRICAL AND MECHANICAL ENGINEERS REGARDING THE REMOVAL OF ALL ELECTRICAL AND MECHANICAL SYSTEMS RELATED TO THE DEMOLITION OF THE EXISTING CEILING AND INSTALLATION OF THE NEW SUSPENDED CEILING. THIS INCLUDES, BUT IS NOT LIMITED TO, THE EXISTING LIGHTING, SPRINKLER SYSTEM, AND EMERGENCY ALARMS AND SIGNAGE. MECHANICAL AND ELECTRICAL ENGINEERS TO DETERMINE WHAT COMPONENTS CAN BE RELOCATED AND REUSED.

GENERAL CONTRACTOR TO PROVIDE ELECTRICAL AND MECHANICAL ENGINEERING SERVICES FOR THE DESIGN, BUILDING PERMIT DOCUMENTS, AND IMPLEMENTATION OF THESE REQUIREMENTS.

Contractor to verify all dimensions & conditions on site and immediately notify the consultant of all discrepancies.

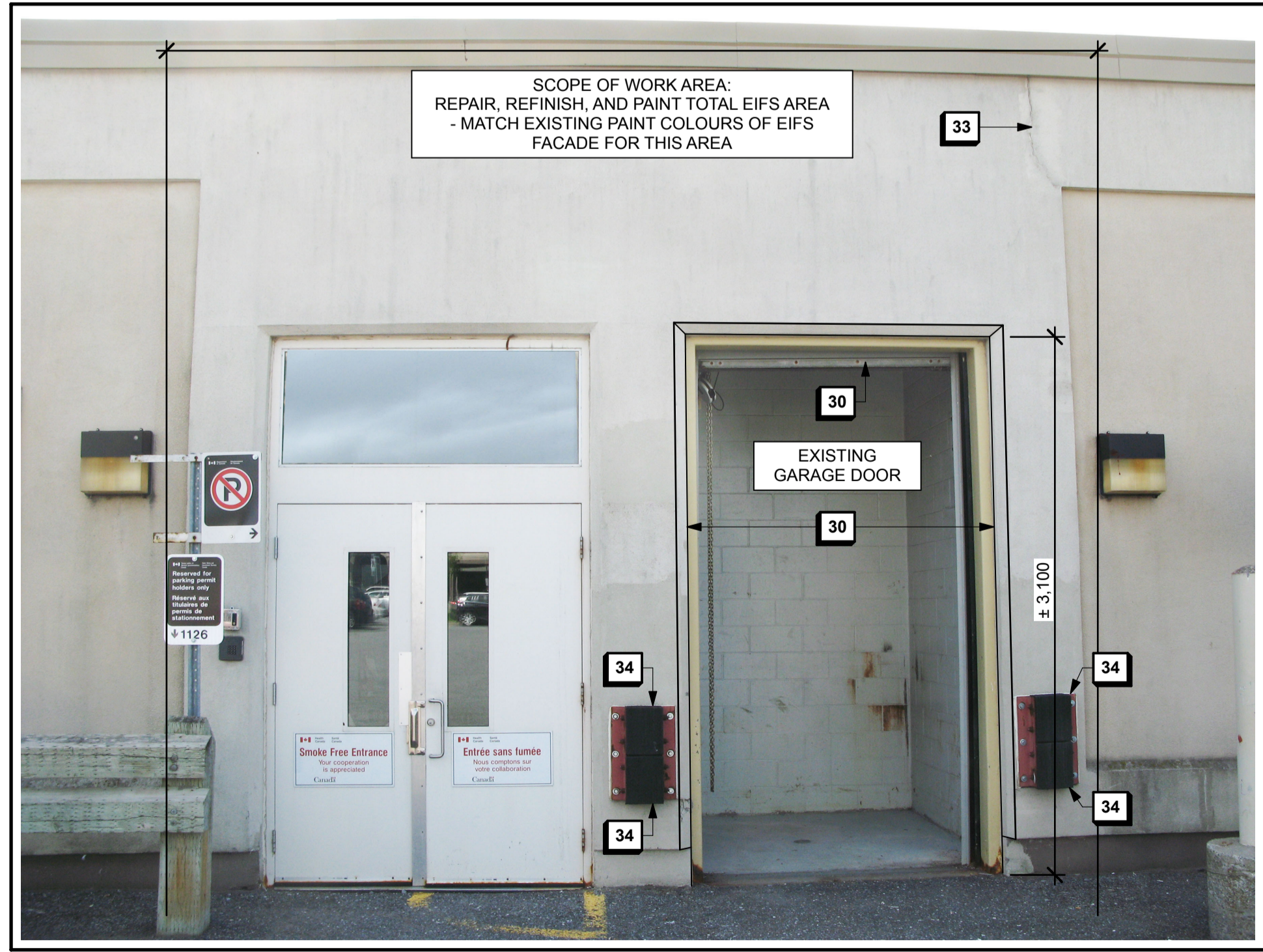
2	ISSUED FOR TENDER	2014/11/24
1	ISSUED FOR 99% COMPLETION REVIEW	2014/09/30
revisions	description	date
A	A detail no. no. du detail	A
B	B location drawing no. sur dessin no.	B C
C	C drawing no. dessin no.	

project
HEALTH CANADA OCCUPATIONAL HEALTH UNIT (OHU) MODERNIZATION PROJECT
51 CHARDON DRIVEWAY
TUNNEY'S PASTURE

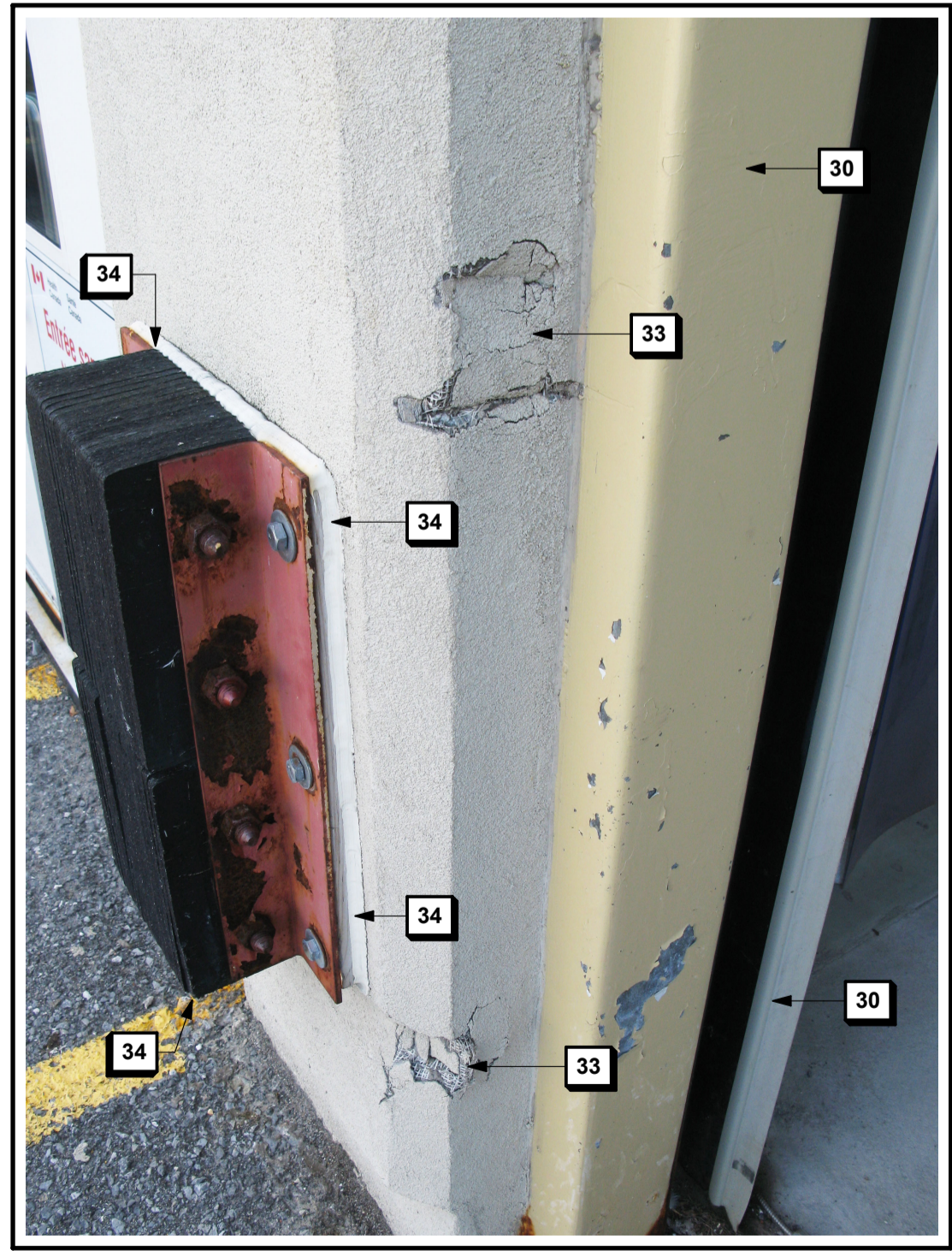
drawing
OHU: GROUND FLOOR DEMOLITION REFLECTED CEILING PLAN & GARAGE DOOR REMOVAL

Designed By	Conçu par
Date	(yyyy/mm/dd)
Drawn By	Dessiné par
Date	(yyyy/mm/dd)
Reviewed By	Examiné par
Date	(yyyy/mm/dd)
Approved By	Approuvé par
Date	(yyyy/mm/dd)
Tender	Soumission
Project Manager	Administrateur de projets
Project no.	No. du projet

H-018221
Drawing no. No. du dessin
A04



3
A04 EXISTING GARAGE DOOR ELEVATION
NOT TO SCALE



4
A04 REPAIRS TO EXISTING EIFS SYSTEM
NOT TO SCALE