

Public Works and  
Government Services  
Canada

Travaux publics et  
Services gouvernementaux  
Canada

**ROOF REMEDIATION  
JOSEPH A. GHIZ BUILDING  
275 POPE ROAD  
SUMMERSIDE  
PEI**

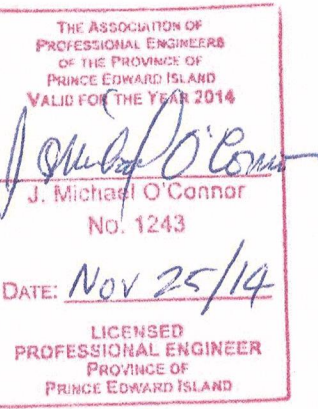
**DRAWING LIST**

0	COVER
S1	LOWER ROOF PLAN REMEDIATION
S2	UPPER ROOF PLAN ATRIUM CAULKING REMEDIATION
S3	DETAILS AND SECTIONS
S4	DETAILS AND SECTIONS

**PROJECT NO. R.000003.048**

**Canada**





**MATRIX** Consulting Inc.  
Project Management  
and Engineering Solutions  
PO Box 22028  
RPO Bayers Road, Halifax,  
NS, Canada,  
B3L 4T7

LEGEND

- AREA 1 = 83.72 SQM  
AREA 2 = 1563.1 SQM  
AREA 3 = 62.15 SQM  
NEW SEPARATION LINE

3	95% SUBMISSION	NOV 06 2014
2	90% SUBMISSION	OCT 29 2014
1	75% SUBMISSION	OCT 2014
revisions		date
project		projet

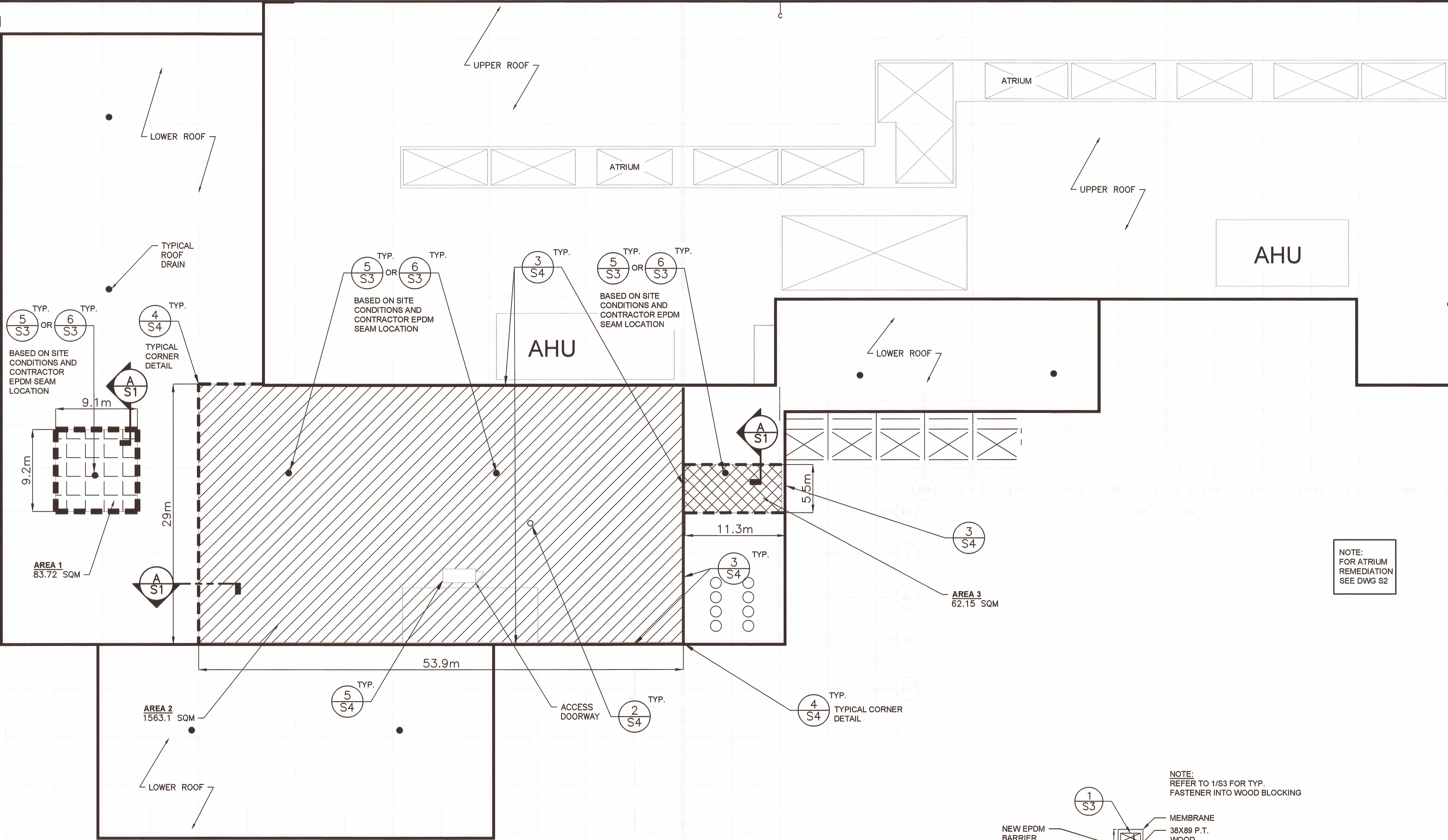
**ROOF REMEDIATION  
JOSEPH A. GHIZ BLDG.  
275 POPE ROAD  
SUMMERSIDE  
PEI**

**LOWER ROOF PLAN  
REMEDIATION**

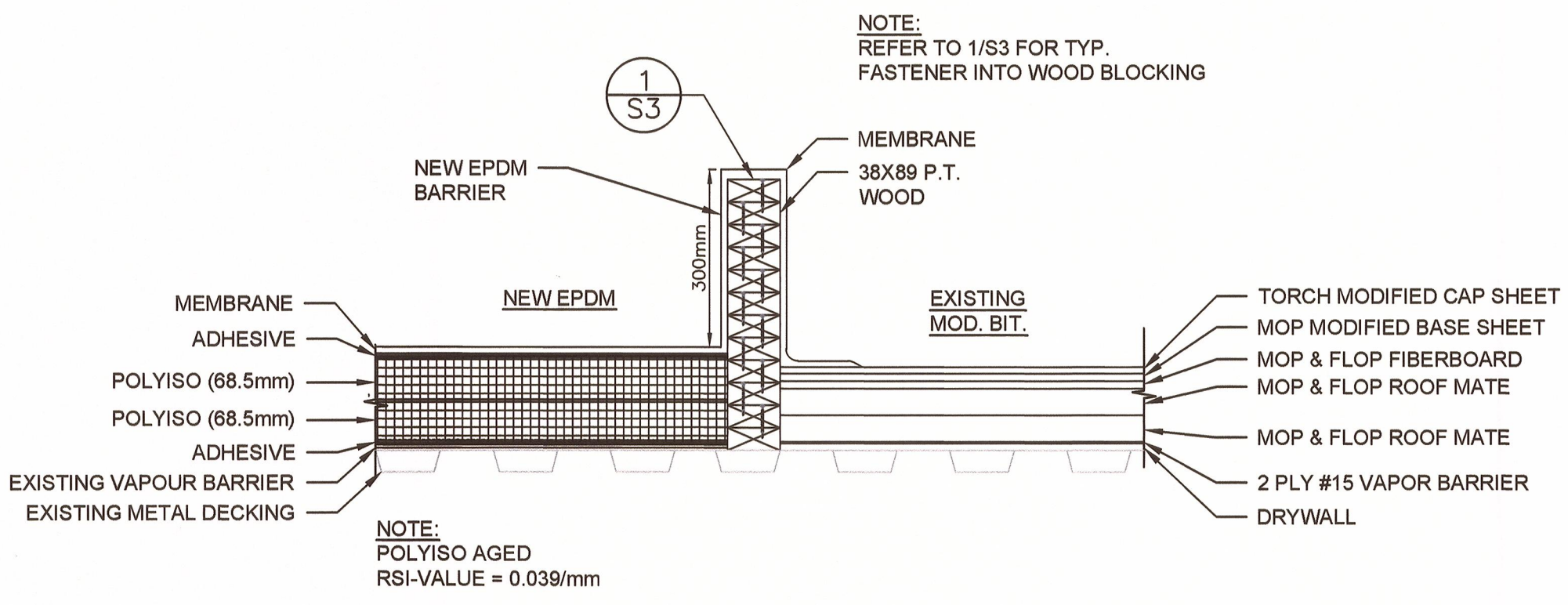
designed MO'C  
date SEPTEMBER 2014  
drawn AC  
date SEPTEMBER 2014  
approved  
date  
Tender  
PWGSC Project Manager  
project number  
drawing no.

conçu  
dessiné  
approuvé  
Soumission  
Administrateur de projets TPSGC  
no. du projet  
no. du dessin

**R.000003.048**  
**S1**

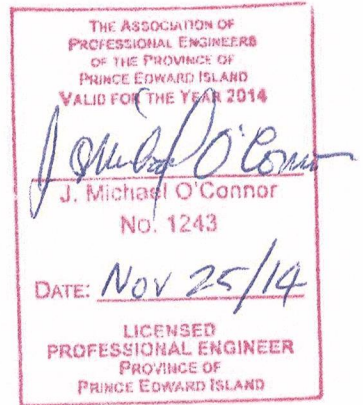


**LOWER ROOF PLAN**  
SCALE : 1:250  
1 S1



**NEW ROOF SEPARATION SECTION**  
SCALE: 1:10  
A S1





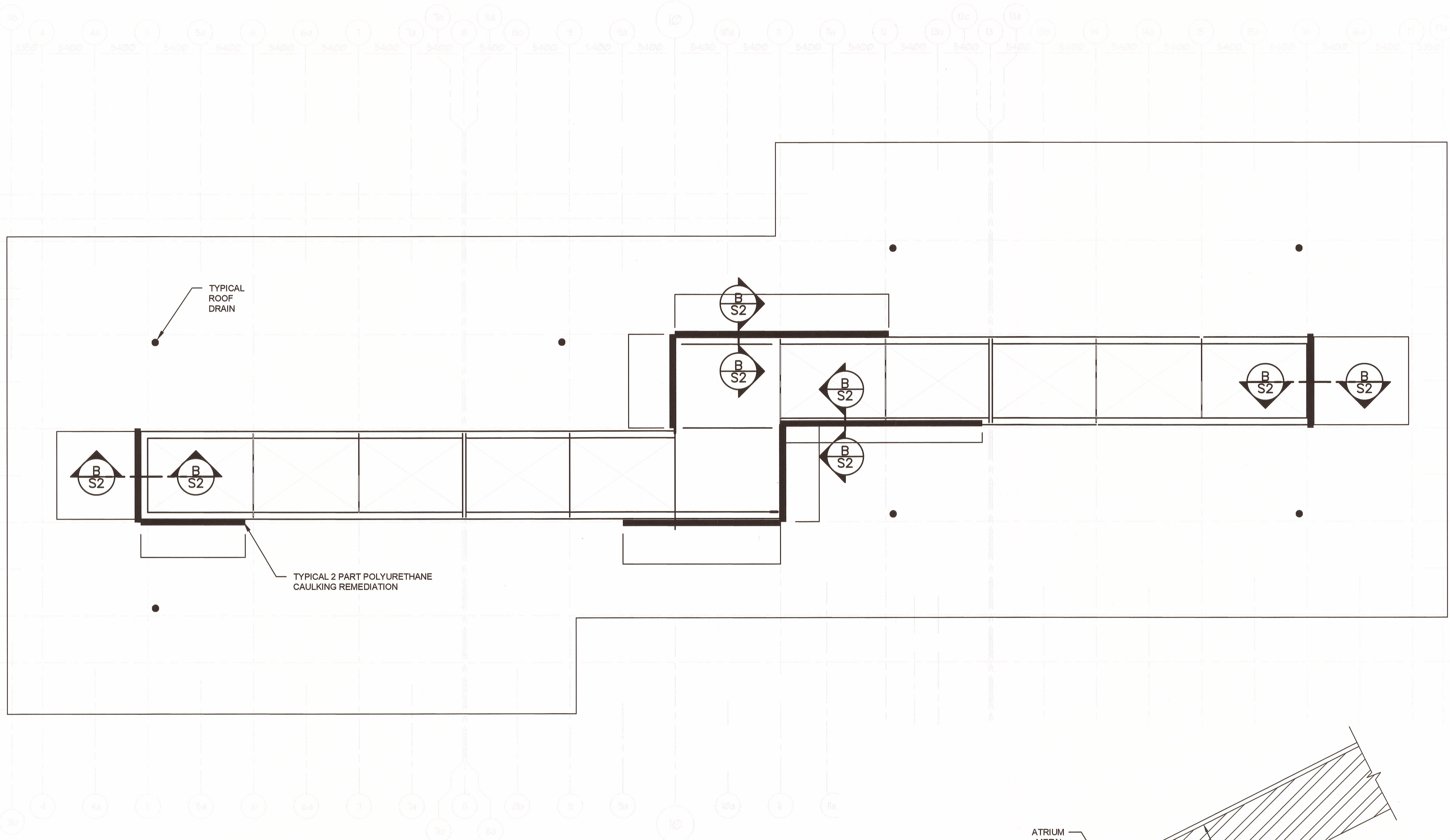
**MATRIX Consulting Inc.**  
Project Management  
and Engineering Solutions  
PO Box 22028  
RPO Bayers Road, Halifax,  
NS, Canada,  
B3L 4T7

3	95% SUBMISSION	NOV 06 2014
2	90% SUBMISSION	OCT 29 2014
1	75% SUBMISSION	OCT 2014
revisions		date
project		projet

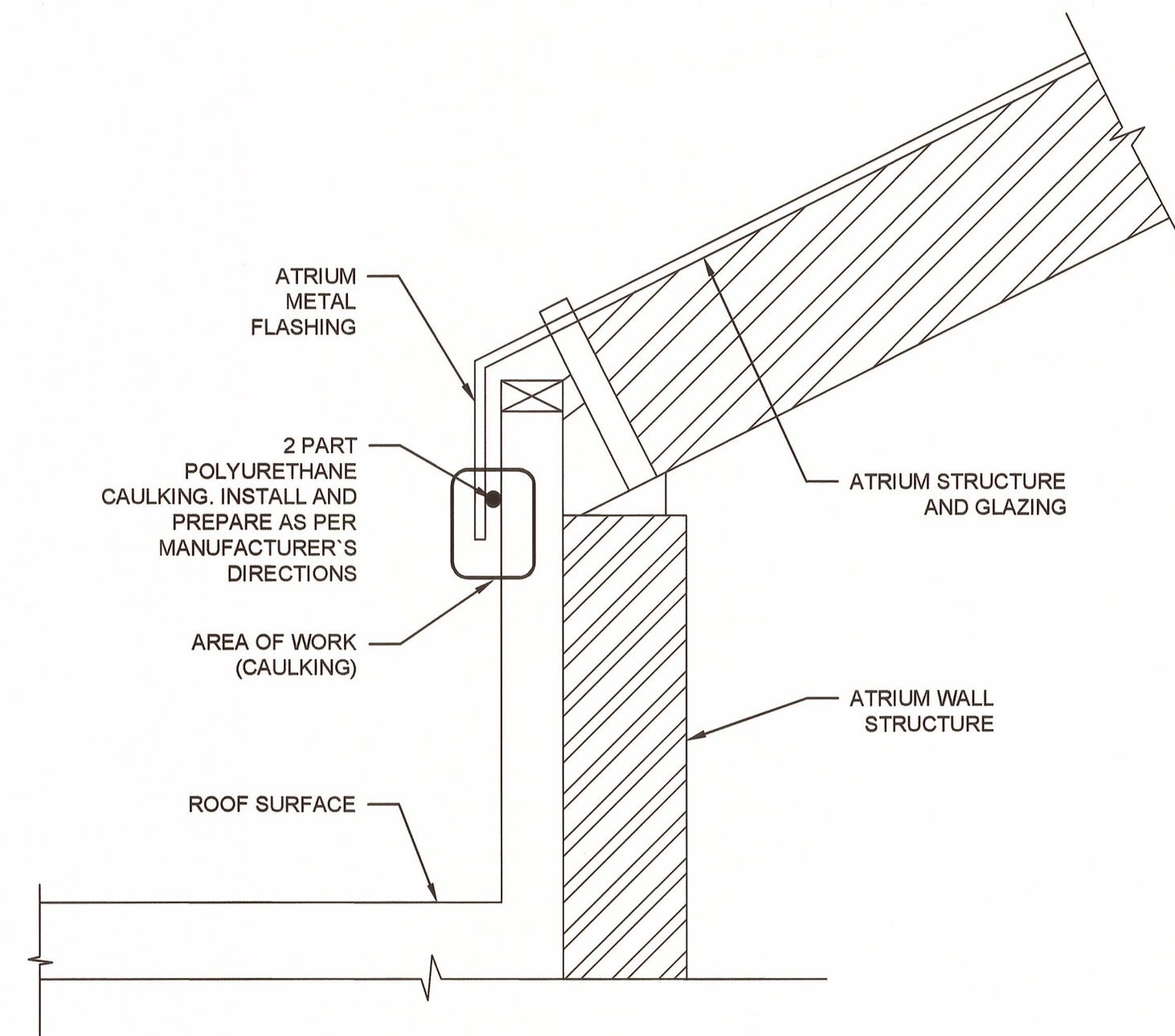
**ROOF REMEDIATION  
JOSEPH A. GHIZ BLDG.  
275 POPE ROAD  
SUMMERSIDE  
PEI**

**UPPER ROOF PLAN  
ATRIUM CAULKING  
REMEDIATION**

designed MO'C  
date SEPTEMBER 2014  
drawn AC  
date SEPTEMBER 2014  
approved  
date  
Tender  
PWGSC Project Manager Administrateur de projets TPSGC  
project number  
**R.000003.048**  
drawing no.  
**S2**

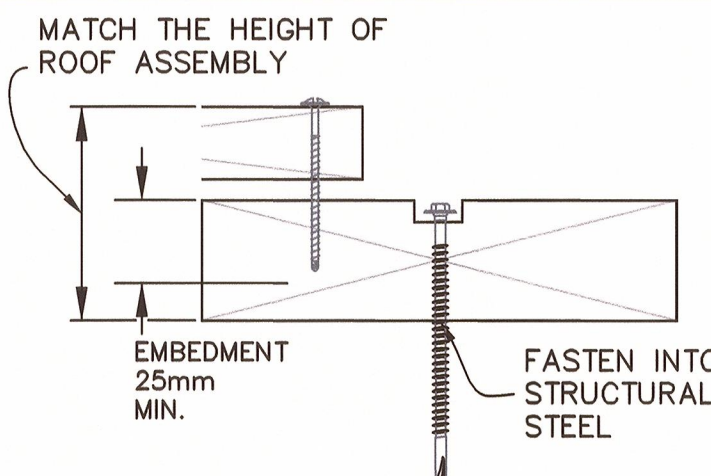
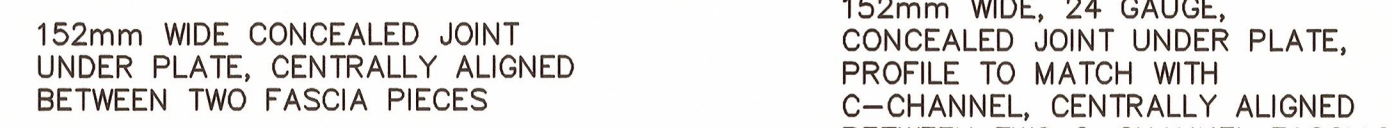
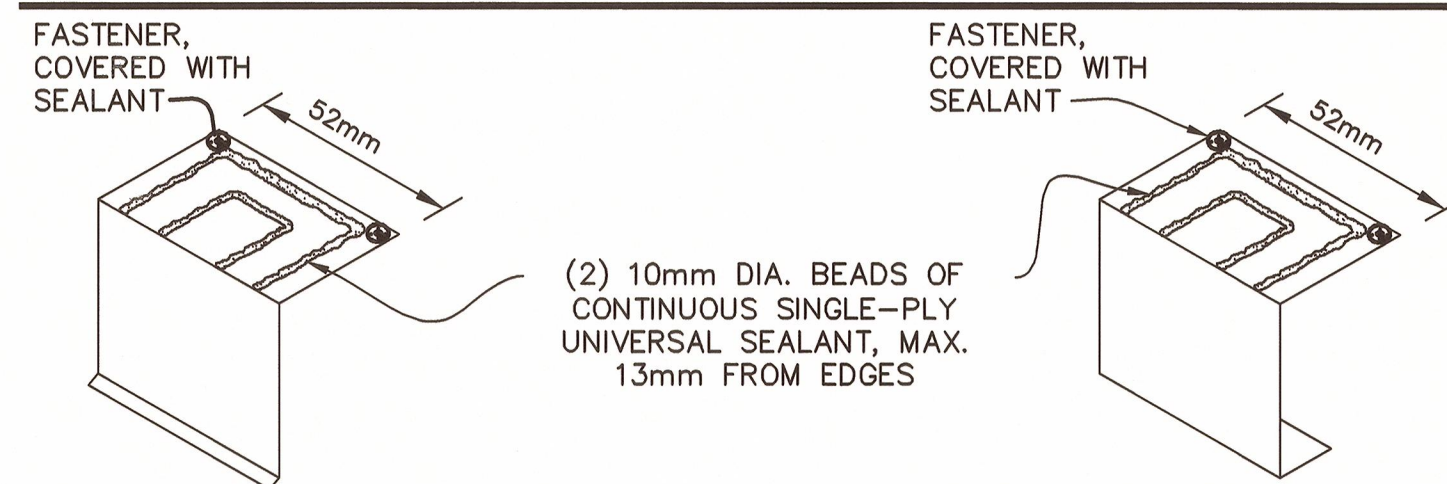
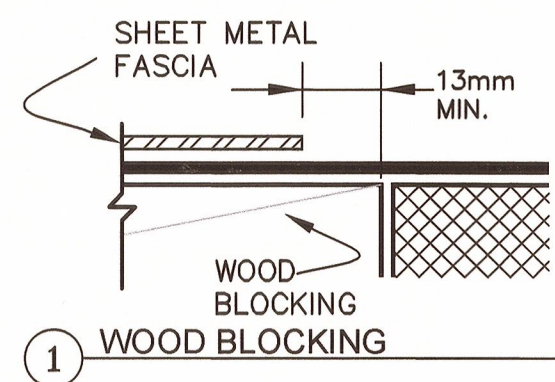


**UPPER ROOF PLAN**  
SCALE : 1:250  
0mm 2 4 6 8 10 12 14 16 18 20m



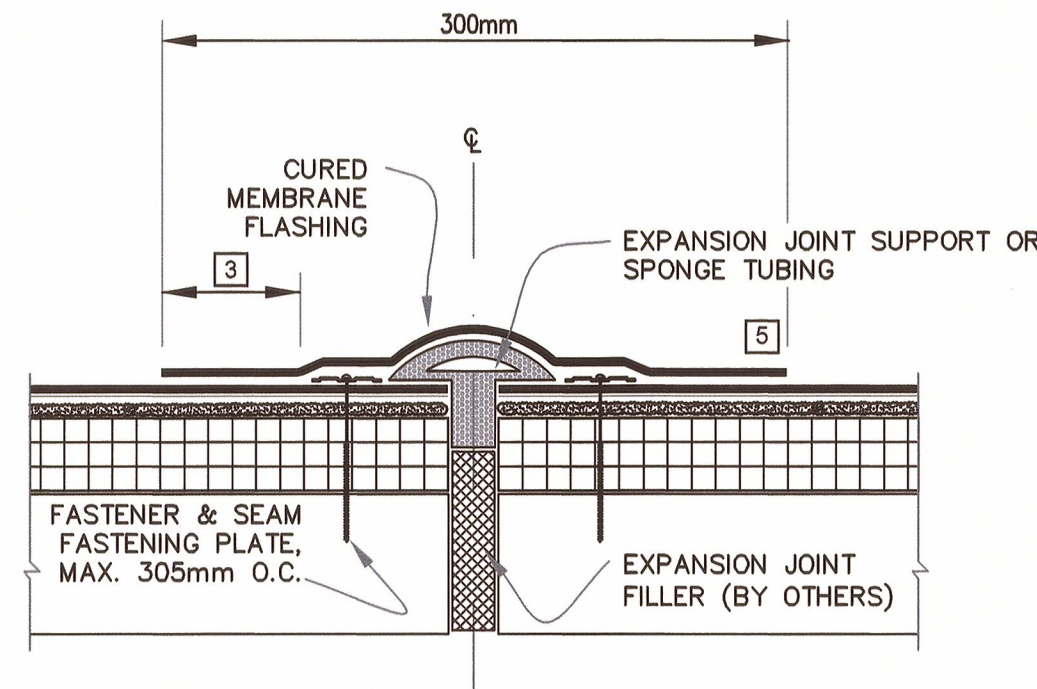
**ATRIUM SECTION**  
SCALE: 1:10  
0 10 20mm 40 60 80 100 120 140 160 180 200mm





NEW EPDM BARRIER DETAILS  
NTS

1  
S3



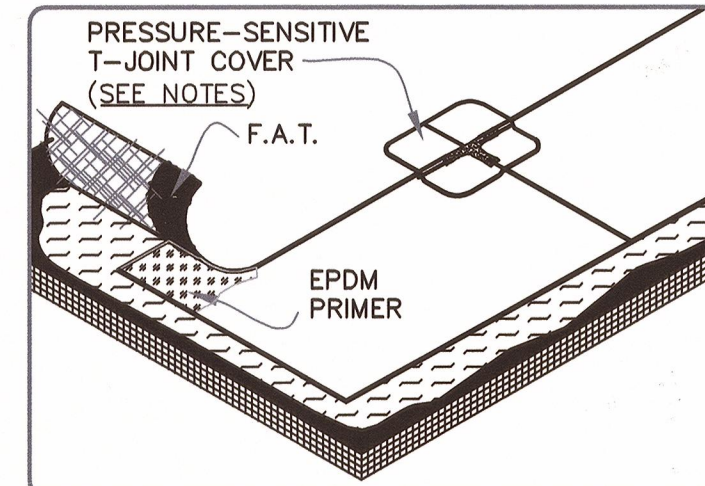
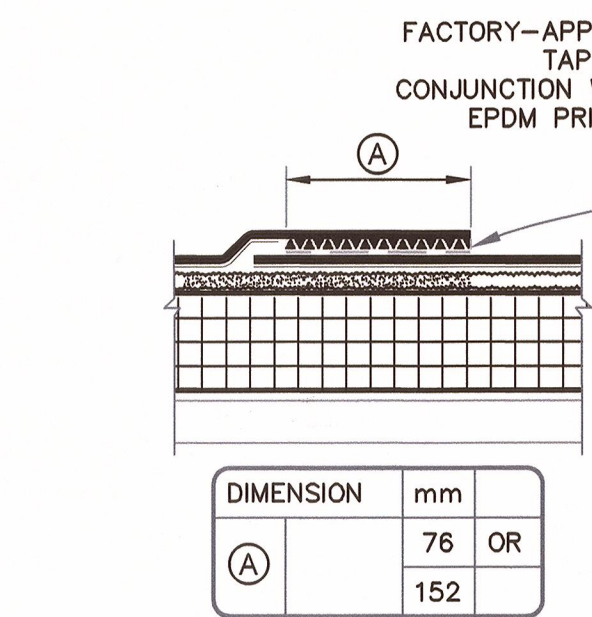
- NOTES:
- EXPANSION JOINT SUPPORT WIDTH SHALL BE A MINIMUM OF 19mm AND SHALL NOT EXCEED 76mm.
  - APPROXIMATELY 3mm DIAMETER BEAD OF CUT-EDGE SEALANT IS REQUIRED ON CUT EDGES OF REINFORCED TPO MEMBRANE AND RECOMMENDED ON CUT EDGES OF PVC MEMBRANE.
  - MEMBRANE SPLICES SHALL BE COMPLETED USING MINIMUM 76mm WIDE SPLICING TAPE/ PRIMER WITH EPDM MEMBRANE AND MINIMUM 38mm HOT AIR WELD WITH TPO/PVC.
  - USE 60-MIL REINFORCED THERMOPLASTIC MEMBRANE FLASHING, APPLY A 114mm DIAMETER THERMOPLASTIC "T-JOINT" COVER AT ALL FIELD SPlice INTERSECTIONS.
  - ROOF MEMBRANE SHALL NOT BE ADHERED OVER THE EXPANSION JOINT SUPPORT OR SPONGE TUBING.
  - USE TWO LAYERS OF PRESSURE-SENSITIVE FLASHING WITH EACH LAYER 76mm LARGER THAN THE PREVIOUS LAYER IN ALL DIRECTIONS FOR EXPANSION JOINT INTERSECTIONS BETWEEN EXPANSION JOINTS TO WALL OR EDGING.
  - EXPANSION JOINT LOCATIONS WILL BE DETERMINED BY THE INSTALLER, ON SITE, ACCORDING TO FIELD CONDITIONS.

TYPICAL EXPANSION JOINT  
NTS

TYP.

4  
S3

MEMBRANE SPlice



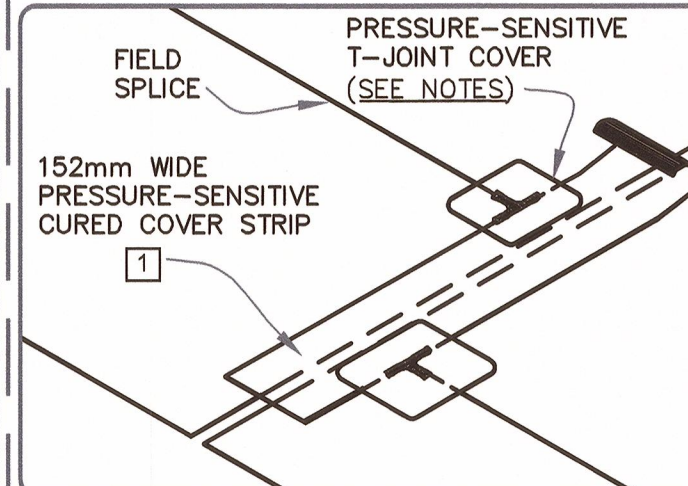
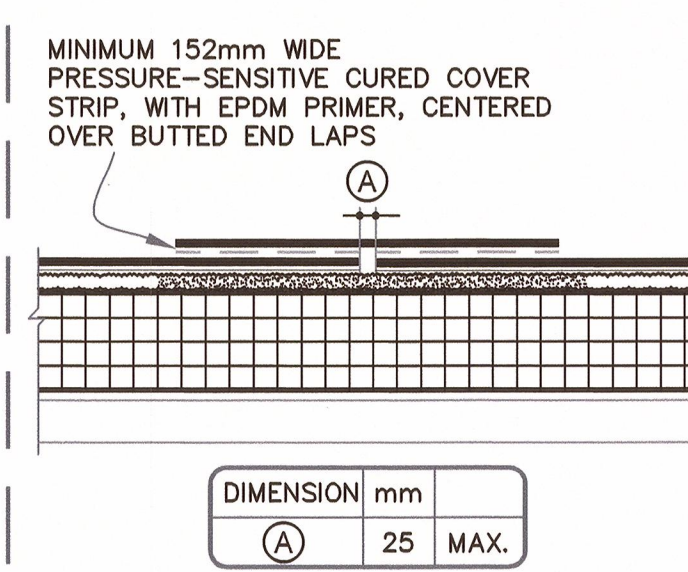
- NOTES:
- APPLY EPDM PRIMER TO MEMBRANE SURFACES PRIOR TO INSTALLING PRESSURE-SENSITIVE FLASHING AND/OR FACTORY APPLIED SPLICING TAPE.
  - APPLY LAP SEALANT ALONG THE EDGE OF THE MEMBRANE SPlice (UNDER THE 152mmx152mm T-JOINT COVER) COVERING THE EXPOSED SPlice TAPE 51mm IN EACH DIRECTION FROM THE SPlice INTERSECTION.
  - 152mm WIDE PRESSURE-SENSITIVE FLASHING MAY ALSO BE CENTERED OVER THE FIELD SPlice INTERSECTION.
  - ONLY APPROVED WATER BASED ADHESIVE CAN BE USED WITH WHITE EPDM MEMBRANE.
  - INSTALL MEMBRANE SPLICES AS DIRECTED BY THE INSTALLER ACCORDING TO FIELD CONDITIONS.

TYPICAL EPDM MEMBRANE SPLICES  
NTS

TYP.

2  
S3

END LAP SPlice



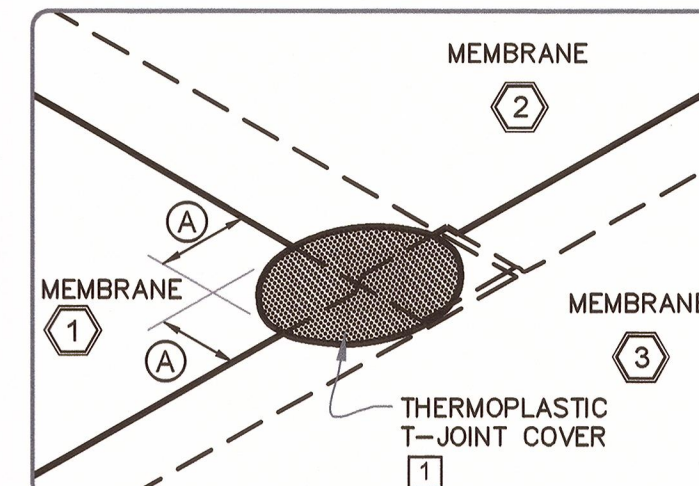
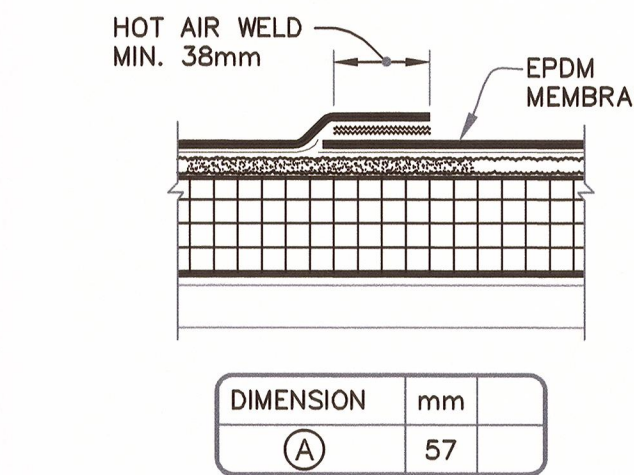
- NOTES:
- APPLY EPDM PRIMER TO MEMBRANE SURFACES PRIOR TO INSTALLING PRESSURE-SENSITIVE FLASHING AND/OR FACTORY APPLIED SPLICING TAPE.
  - APPLY LAP SEALANT ALONG THE EDGE OF THE MEMBRANE SPlice (UNDER THE 152mmx152mm T-JOINT COVER) COVERING THE EXPOSED SPlice TAPE 51mm IN EACH DIRECTION FROM THE SPlice INTERSECTION.
  - 152mm WIDE PRESSURE-SENSITIVE FLASHING MAY ALSO BE CENTERED OVER THE FIELD SPlice INTERSECTION.
  - ONLY APPROVED WATER BASED ADHESIVE CAN BE USED WITH WHITE EPDM MEMBRANE.
  - INSTALL MEMBRANE SPLICES AS DIRECTED BY THE INSTALLER ACCORDING TO FIELD CONDITIONS.

TYPICAL EPDM MEMBRANE SPLICES  
NTS

TYP.

2  
S3

MEMBRANE SPlice



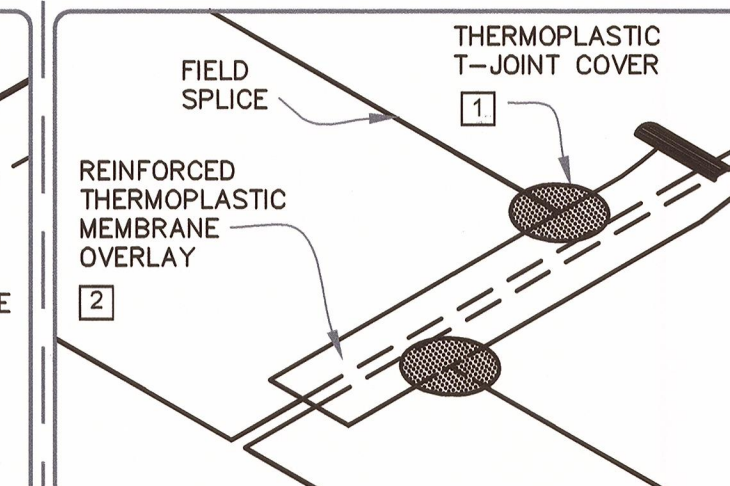
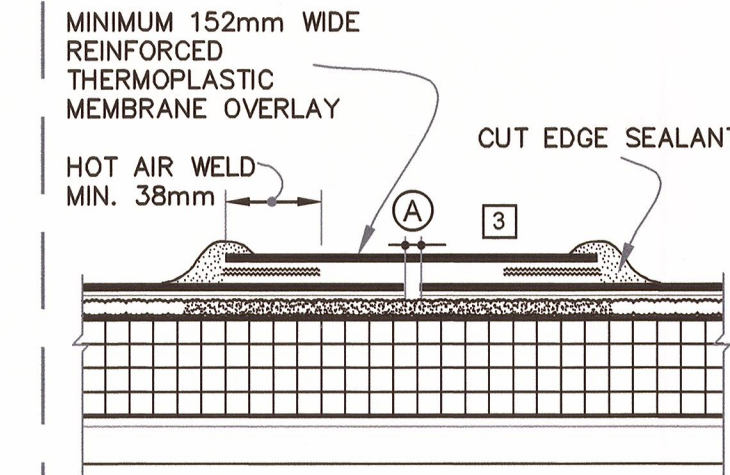
- NOTES:
- USE 115-MIL THERMOPLASTIC EPDM MEMBRANE, APPLY A 114mm DIAMETER THERMOPLASTIC "T-JOINT" COVER AT ALL FIELD SPlice INTERSECTIONS.
  - WHEN USING 60-MIL THERMOPLASTIC REINFORCED MEMBRANE OVERLAY, INTERSECTIONS BETWEEN SPLICES MUST BE OVERLAP WITH A 114mm DIAMETER THERMOPLASTIC "T-JOINT" COVER.
  - APPROXIMATELY 3mm DIAMETER BEAD OF CUT-EDGE SEALANT IS REQUIRED ON CUT EDGES OF REINFORCED TPO MEMBRANE AND ON CUT EDGES OF PVC MEMBRANE.
  - INSTALL MEMBRANE SPLICES AS DIRECTED BY THE INSTALLER ACCORDING TO FIELD CONDITIONS.

TYPICAL THERMOPLASTIC MEMBRANE SPLICES  
NTS

TYP.

3  
S3

END LAP SPlice

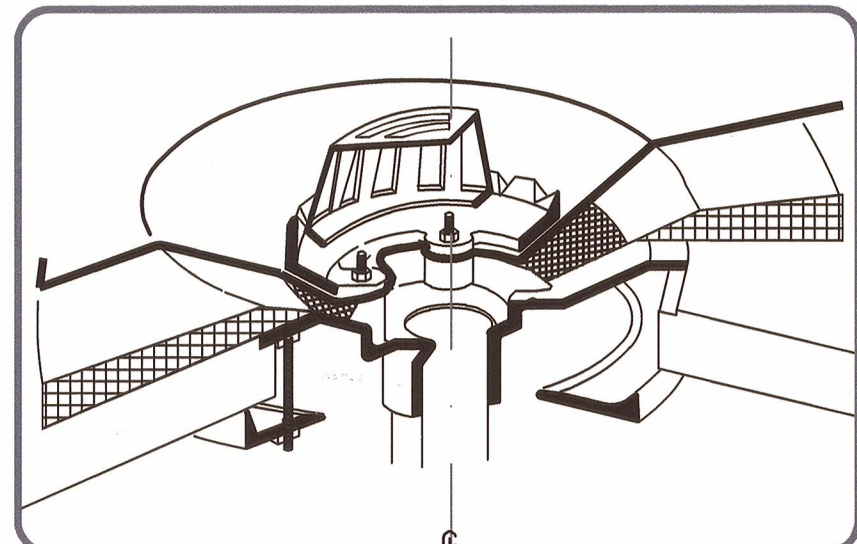
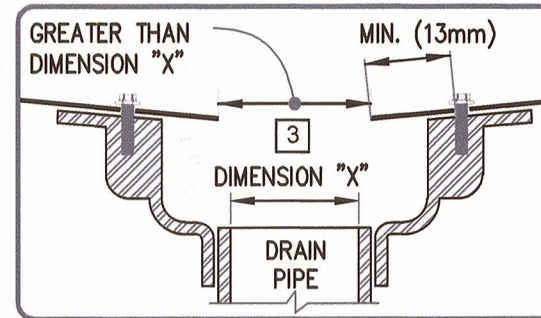
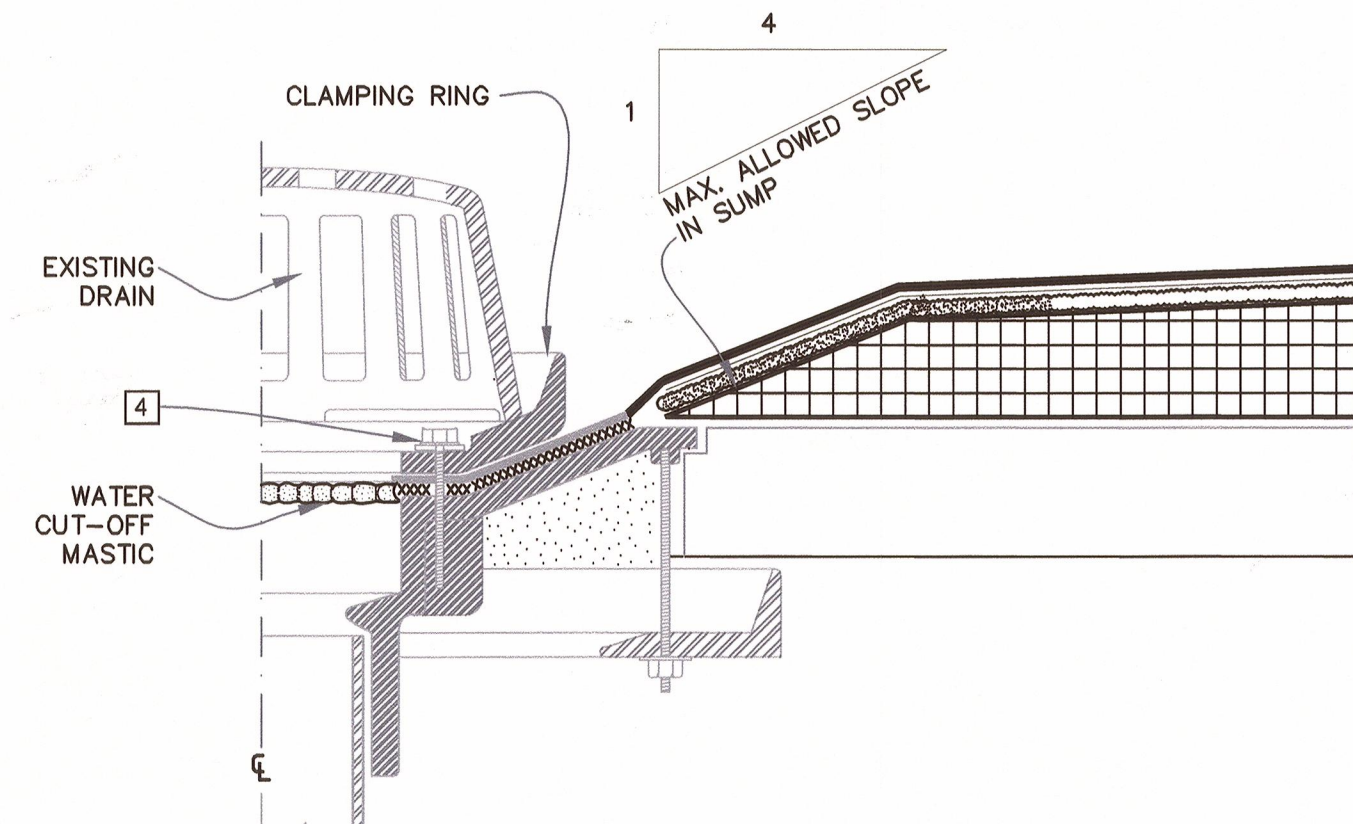


- NOTES:
- USE 115-MIL THERMOPLASTIC EPDM MEMBRANE, APPLY A 114mm DIAMETER THERMOPLASTIC "T-JOINT" COVER AT ALL FIELD SPlice INTERSECTIONS.
  - WHEN USING 60-MIL THERMOPLASTIC REINFORCED MEMBRANE OVERLAY, INTERSECTIONS BETWEEN SPLICES MUST BE OVERLAP WITH A 114mm DIAMETER THERMOPLASTIC "T-JOINT" COVER.
  - APPROXIMATELY 3mm DIAMETER BEAD OF CUT-EDGE SEALANT IS REQUIRED ON CUT EDGES OF REINFORCED TPO MEMBRANE AND ON CUT EDGES OF PVC MEMBRANE.
  - INSTALL MEMBRANE SPLICES AS DIRECTED BY THE INSTALLER ACCORDING TO FIELD CONDITIONS.

TYPICAL THERMOPLASTIC MEMBRANE SPLICES  
NTS

TYP.

3  
S3

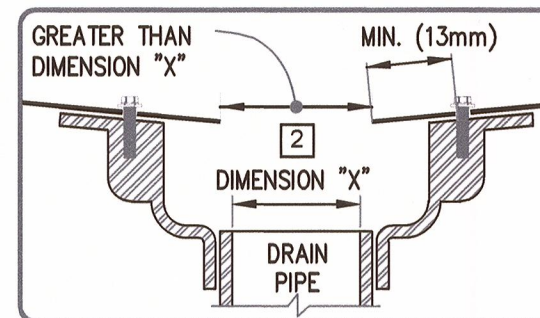
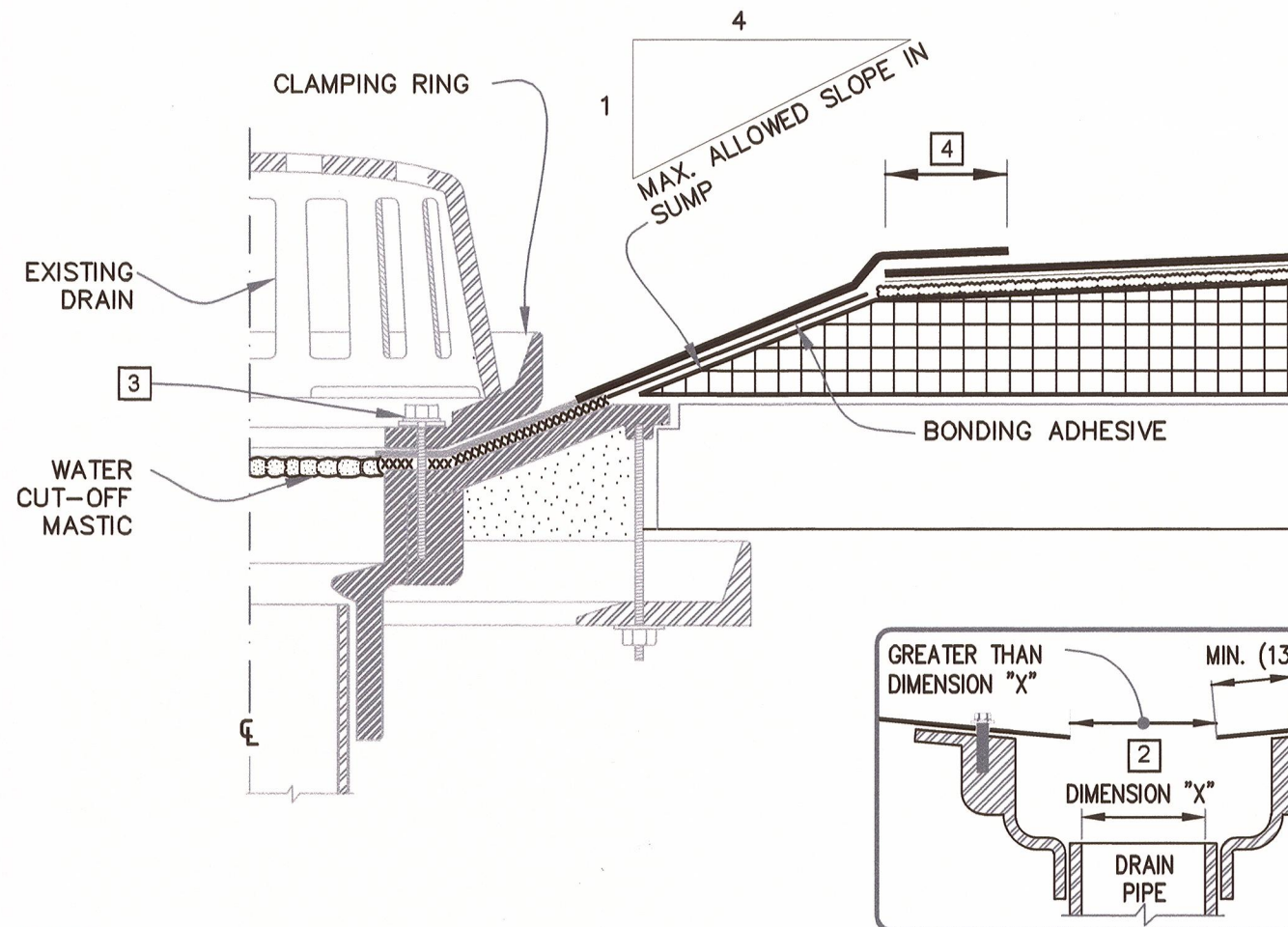


- NOTES:
- REMOVE EXISTING FLASHING MATERIAL & ENSURE THE DRAIN RING IS COMPLETELY CLEAN DOWN TO BARE METAL.
  - EPDM-BACKING MUST BE REMOVED FROM THE MEMBRANE SO THAT WATER CUT-OFF MASTIC IS IN DIRECT CONTACT.
  - THE HOLE IN THE MEMBRANE SHALL EXCEED THE DIAMETER OF THE DRAIN PIPE, BUT SHALL BE NO LESS THAN 13mm FROM THE ATTACHMENT POINTS OF THE DRAIN CLAMPING RING.
  - ALL BOLTS OR CLAMPS MUST BE IN PLACE TO PROVIDE CONSTANT COMPRESSION ON WATER CUT-OFF MASTIC.

TYPICAL ROOF DRAIN WITH CONTINUOUS MEMBRANE  
NTS

TYP.

5  
S3



- NOTES:
- REMOVE EXISTING FLASHING MATERIAL & ENSURE THE DRAIN RING IS COMPLETELY CLEAN DOWN TO BARE METAL.
  - THE HOLE IN THE MEMBRANE SHALL EXCEED THE DIAMETER OF THE DRAIN PIPE, BUT SHALL BE NO LESS THAN 13mm FROM THE ATTACHMENT POINTS OF THE DRAIN CLAMPING RING.
  - ALL BOLTS OR CLAMPS MUST BE IN PLACE TO PROVIDE CONSTANT COMPRESSION ON WATER CUT-OFF MASTIC.
  - SPLICES SHALL BE COMPLETED USING MIN. 76mm WIDE SPLICING TAPE/ PRIMER WITH EPDM MEMBRANE AND MINIMUM 38mm HOT AIR WELD WITH TPO/PVC.
  - FIELD SPLICES MUST BE LOCATED AT LEAST 152mm OUTSIDE THE DRAIN SUMP.
  - APPROXIMATELY 3mm DIAMETER BEAD OF CUT-EDGE SEALANT IS REQUIRED ON CUT EDGES OF REINFORCED TPO MEMBRANE AND ON CUT EDGES OF PVC MEMBRANE.

TYPICAL ROOF DRAIN WITH SEPARATE TARGET SPlice  
NTS

TYP.

6  
S3

3	95% SUBMISSION	NOV 06 2014
2	90% SUBMISSION	OCT 29 2014
1	75% SUBMISSION	OCT 14 2014
revisions		date
project		project

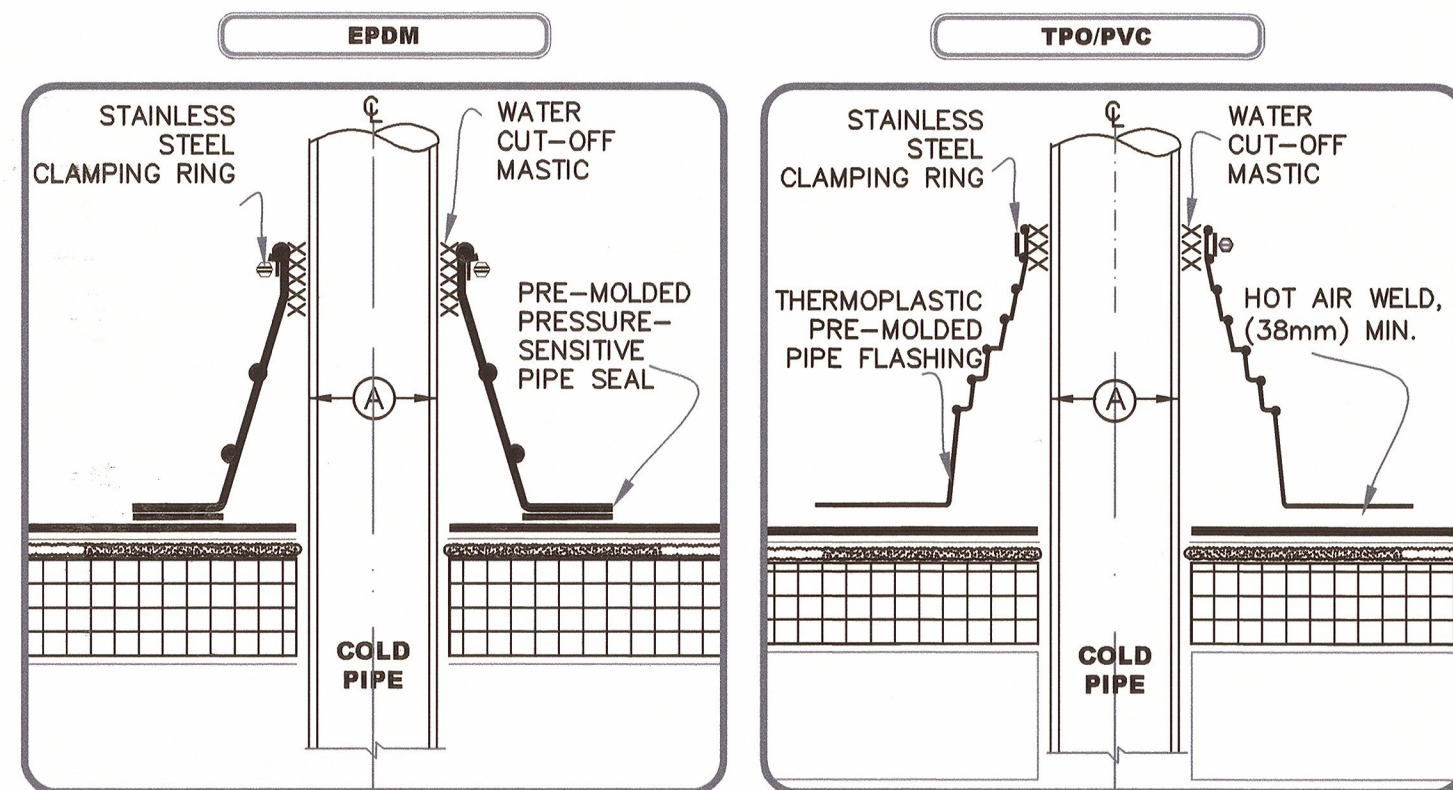
ROOF REMEDIATION  
JOSEPH A. GHIZ BLDG.  
275 POPE ROAD  
SUMMERSIDE  
PEI

DETAILS AND SECTIONS

designed	MO'C	conçu
date	SEPTEMBER 2014	
drawn	AC	dessiné
date	SEPTEMBER 2014	
approved		approuvé
date		
Tender		Soumission
PWOSC Project Manager	Administrateur de projets TPSCG	
project number	R.000003.048	no. du projet
drawing no.	S3	no. du dessin



DETAILS FOR BOTH PIPE SCENARIOS

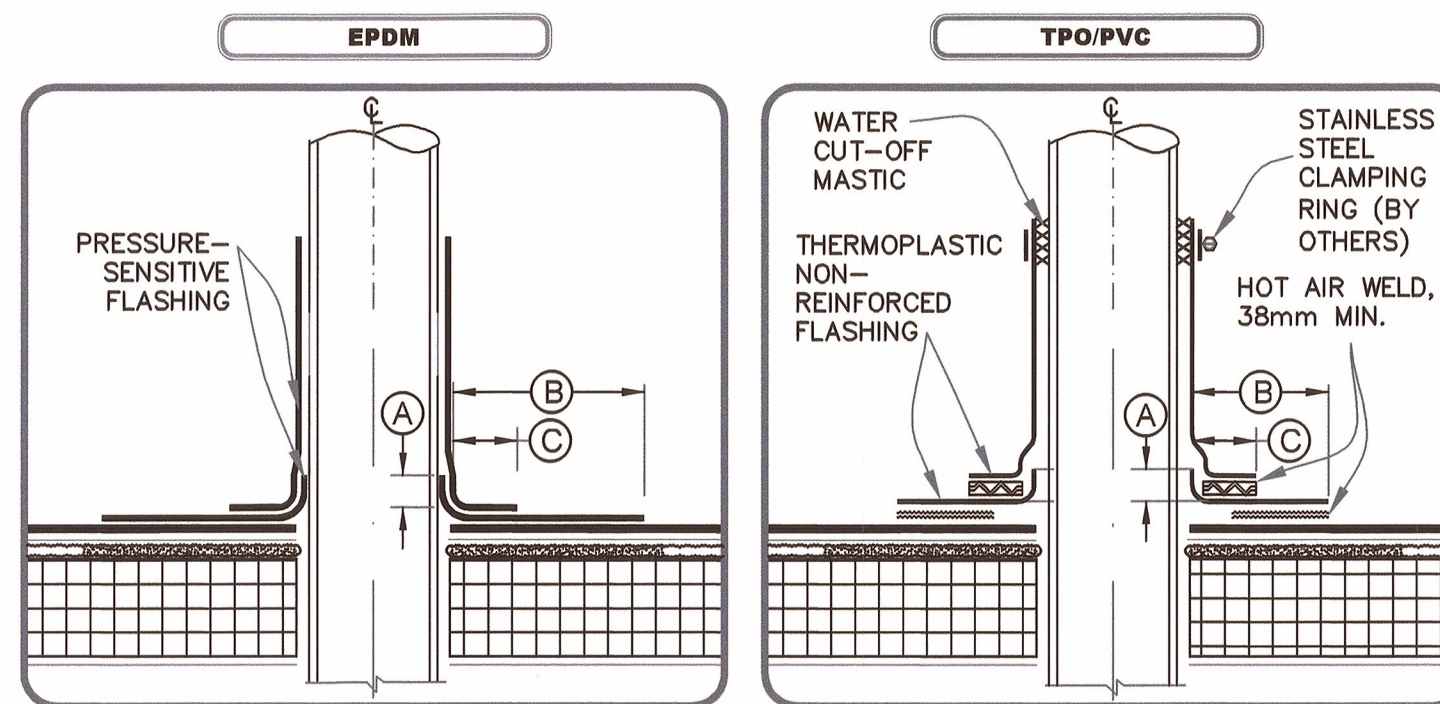


DIMENSIONS	mm
(A)	13 TO 152

- NOTES:
1. REMOVE ALL FLASHING BEFORE INSTALLING FIELD FABRICATED PIPE SEAL.
  2. APPLY EPDM PRIMER TO SPLICE AREA.
  3. PIPE SEAL MUST HAVE INTACT RIB AT TOP EDGE, REGARDLESS OF PIPE DIAMETER.
  4. DECK FLANGES OF THE PRE-MOLDED PIPE SEAL SHALL NOT BE OVERLAPPED, CUT OR APPLIED OVER ANY ANGLE CHANGE.
  5. WHEN A FIELD SPLICE INTERSECTS A PIPE SEAL, APPLY LAP SEALANT ALONG THE EDGE OF THE MEMBRANE SPLICE COVERING THE EXPOSED SPLICE TAPE 51mm IN EACH DIRECTION FROM THE SPLICE INTERSECTION & OVERLAY WITH A 152 X 152mm T-JOINT COVER.

TYPICAL PIPE FRAME  
NTS

DETAILS FOR BOTH PIPE SCENARIOS

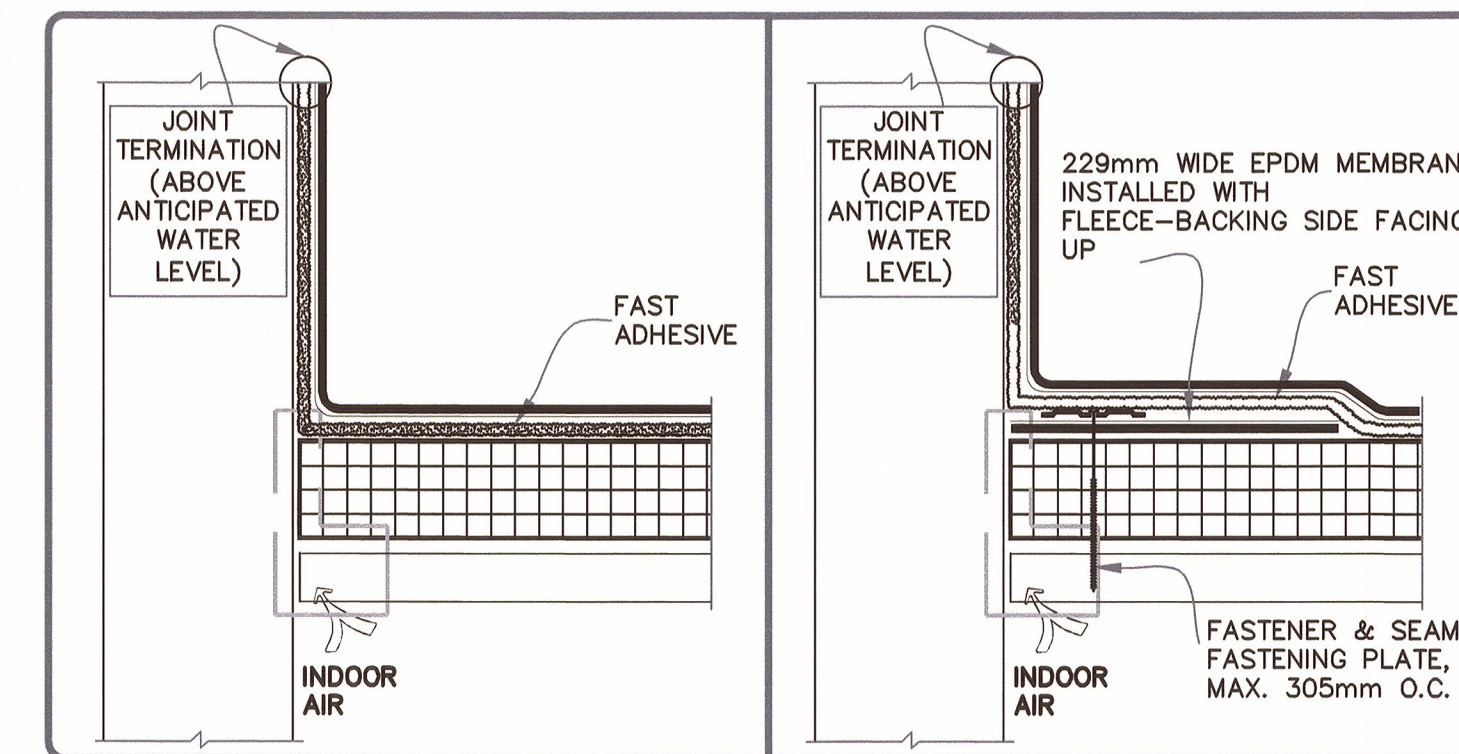


DIMENSIONS	mm
(A)	13 MIN.
(B)	76 MIN.
(C)	25 MIN.

- NOTES:
1. REMOVE ALL FLASHING BEFORE INSTALLING FIELD-FABRICATED PIPE SEAL.
  2. PRIOR TO APPLYING PRESSURE-SENSITIVE FLASHING, APPLY EPDM PRIMER TO SPLICE AREAS.
  3. MECHANICAL SECUREMENT IS REQUIRED AROUND ALL PIPES GREATER THAN 457mm IN DIAMETER.
  4. IN COLDER TEMPERATURES A HEAT GUN MUST BE USED WHEN FORMING PRESSURE-SENSITIVE FLASHING.
  5. REFER TO EPDM UNIVERSAL DETAILS FOR HOT STACK, STEEL TUBING & FLEXIBLE PIPE PENETRATIONS.

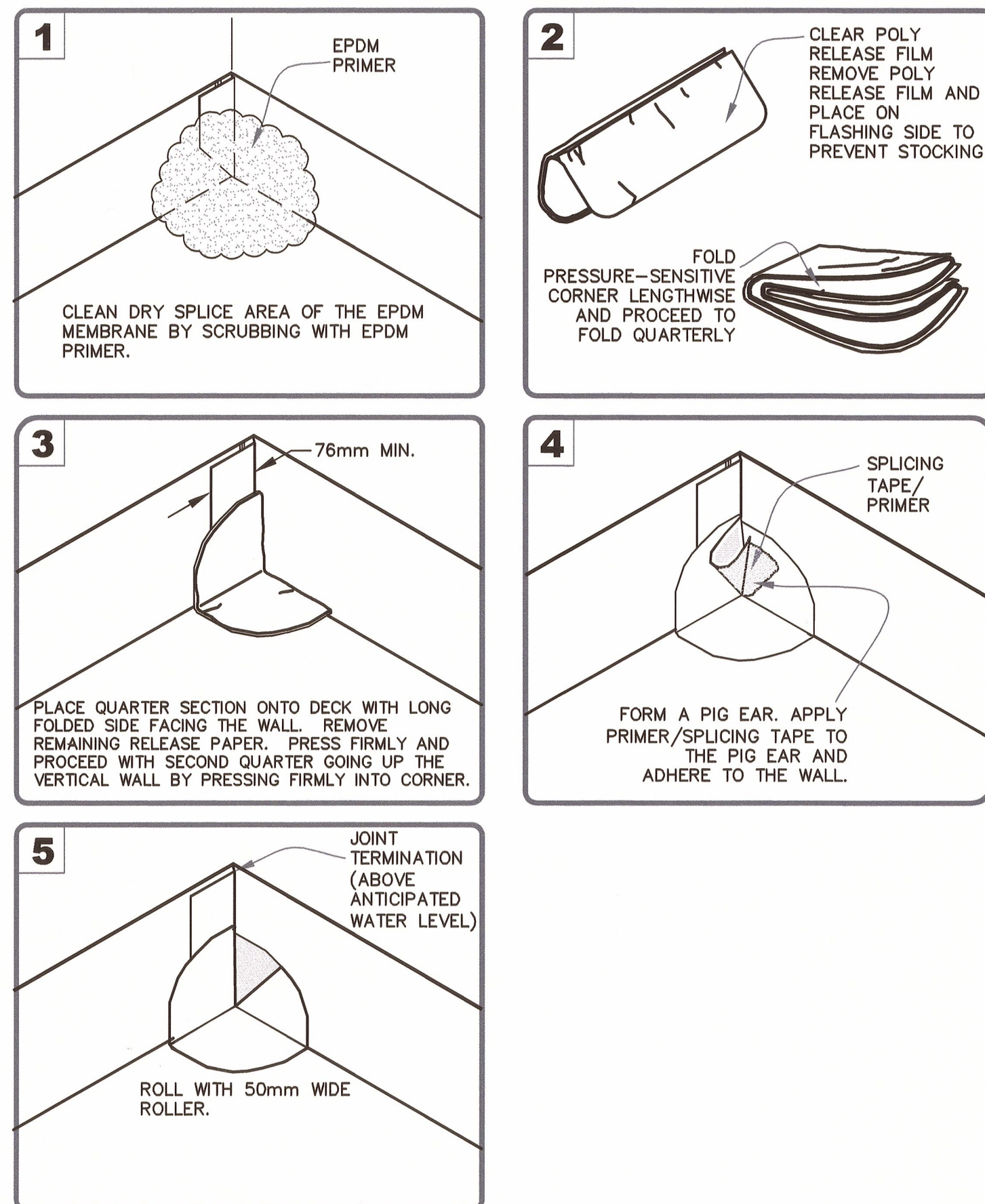
TYPICAL VENT PIPE DETAIL  
NTS

DETAILS FOR BOTH SCENARIOS

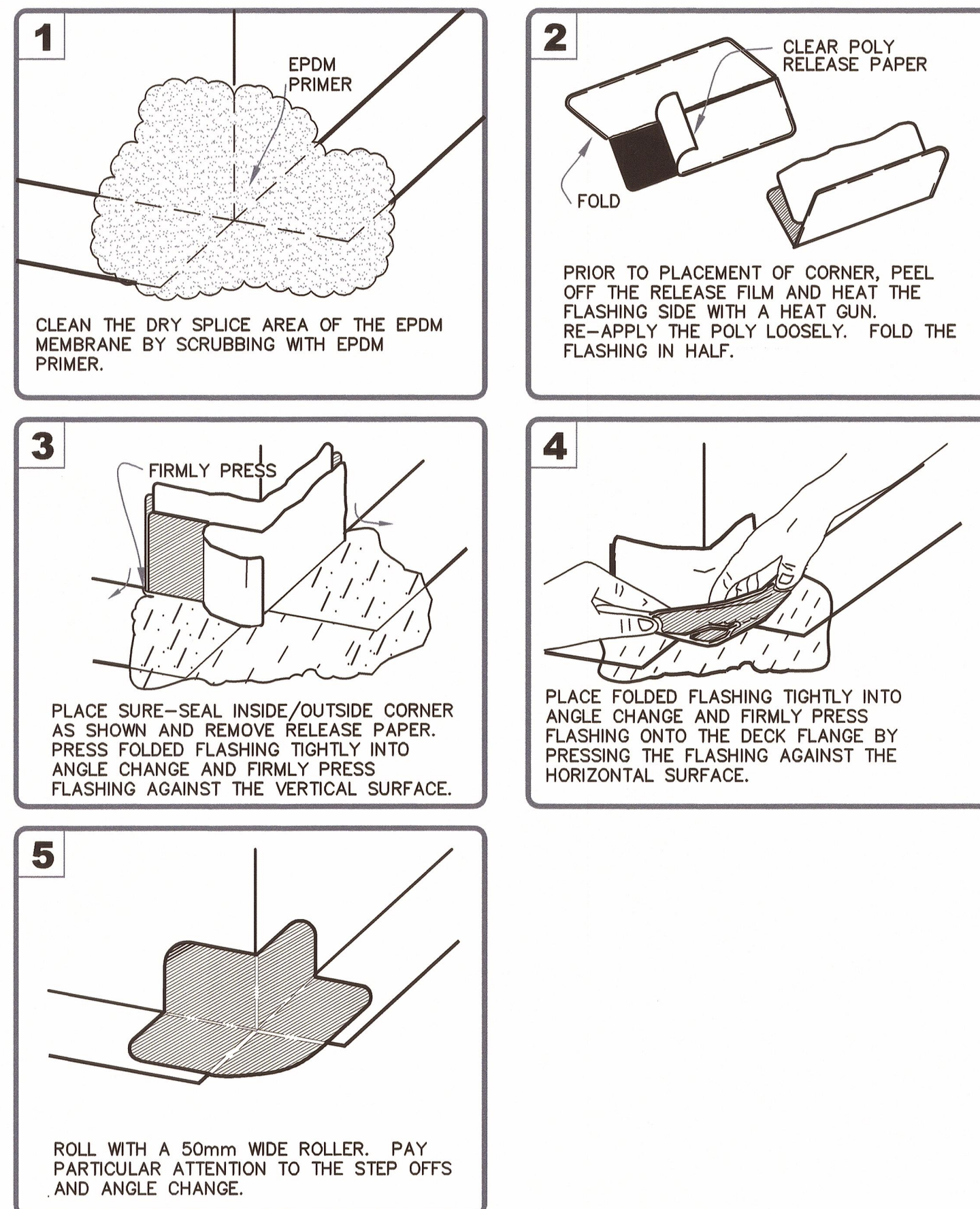


- NOTES:
1. PRESSURE-SENSITIVE EPDM T-JOINT COVER OR 152mm WIDE PRESSURE-SENSITIVE FLASHING, IN CONJUNCTION WITH EPDM PRIMER, MUST BE CENTERED OVER EPDM FIELD SPLICES AT THE ANGLE CHANGE.
  2. WHEN THE USE OF FAST ADHESIVE (FULL SPRAY) IS NOT FEASIBLE ON THE VERTICAL SUBSTRATE, APPLICABLE BONDING ADHESIVE MAY BE USED. APPLY A COAT TO THE FLEECE SIDE OF THE MEMBRANE AND ALLOW TO DRY. ONCE THE ADHESIVE ON THE FLEECE IS DRY, APPLY BONDING ADHESIVE AT THE COVERAGE RATE OF 5.56 SQUARE METERS PER 3.8 LITERS TO THE WALL SUBSTRATE AND A SECOND COAT TO THE EPDM MEMBRANE.
  3. AREA OF WORK BASED ON SITE CONDITIONS AND CONTRACTOR RECOMMENDATIONS.

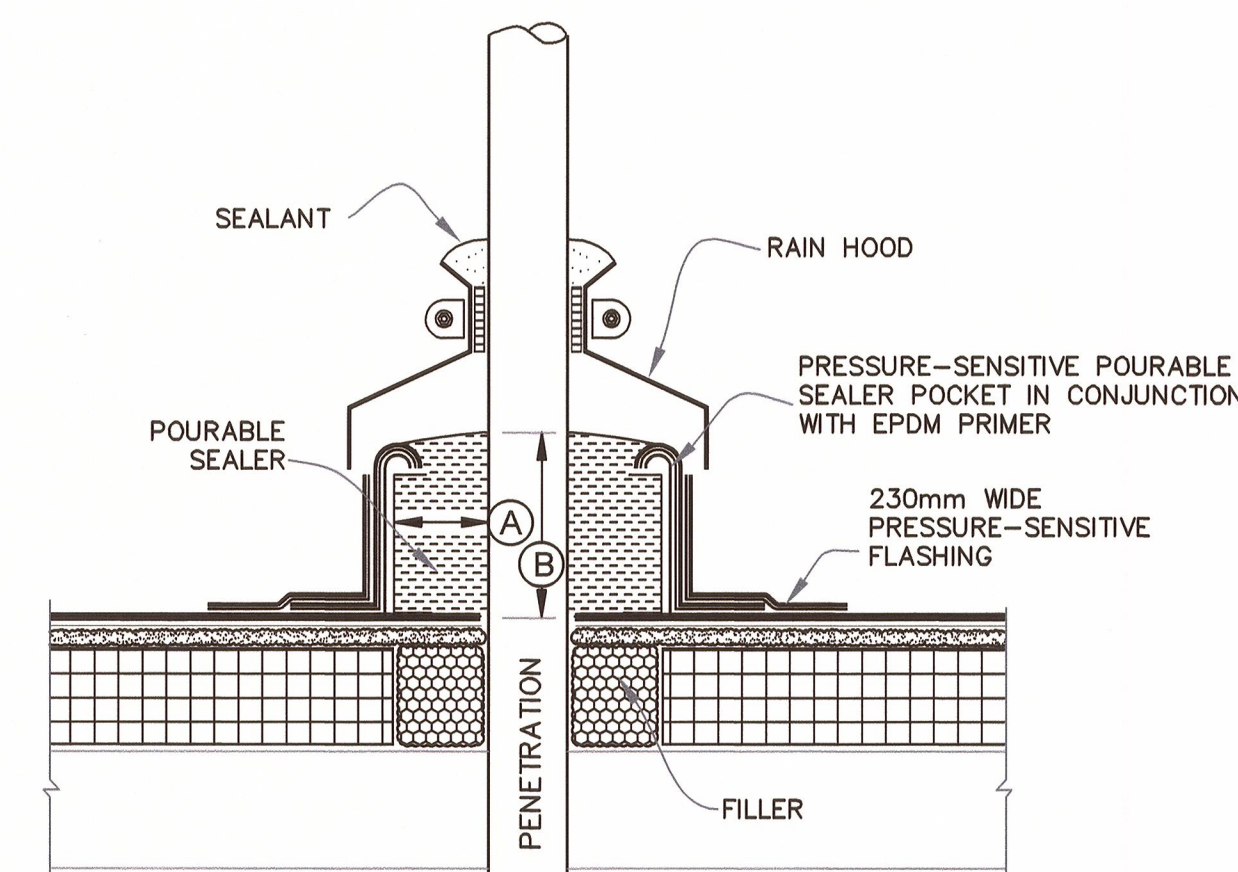
TYPICAL PARAPET WITH CONTINUOUS MEMBRANE  
NTS



TYPICAL EPDM PRESSURE SENSITIVE INSIDE CORNER  
NTS



TYPICAL EPDM PRESSURE SENSITIVE OUTSIDE CORNER  
NTS



DIMENSIONS	mm
(A)	25 MIN.
(B)	51 MIN.

- NOTES:
1. ALL DEBRIS (PAINT, RUST, OTHER FLASHINGS, ETC.) MUST BE REMOVED FROM THE PENETRATION.
  2. PENETRATIONS, MEMBRANE, FLASHING AND INSIDE POCKET MUST BE PRIMED WITH EPDM PRIMER PRIOR TO APPLYING POURABLE SEALER.
  3. POURABLE SEALER MUST COMPLETELY FILL POURABLE SEALER POCKET TO PREVENT PONDING OF WATER.
  4. POURABLE SEALER MUST CONTACT PRIMED PRESSURE-SENSITIVE FLASHING AND DECK MEMBRANE.
  5. PIPE CLUSTERS MUST HAVE MINIMUM 25mm CLEARANCE BETWEEN PENETRATIONS.
  6. WHEN FAST ADHESIVE IS USED TO ADHERE THE EPDM MEMBRANE TO AN APPROVED SUBSTRATE, SECUREMENT IS REQUIRED FOR POURABLE SEALER POCKETS.

TYPICAL EPDM PRESSURE SENSITIVE POURABLE SEALER POCKET  
NTS

3	95% SUBMISSION	NOV 06 2014
2	90% SUBMISSION	OCT 29 2014
1	75% SUBMISSION	OCT 2014
revisions		date

project  
ROOF REMEDIATION  
JOSEPH A. GHIZ BLDG.  
275 POPE ROAD  
SUMMERSIDE  
PEI

DETAILS AND SECTIONS

designed	MO'C	conçu
date	SEPTEMBER 2014	
drawn	AC	dessiné
date	SEPTEMBER 2014	
approved		approuvé
date		
Tender		Soumission
PWGSC Project Manager	Administrateur de projets TPSCG	
project number	R.000003.048	no. du projet

drawing no. S4 no. du dessin