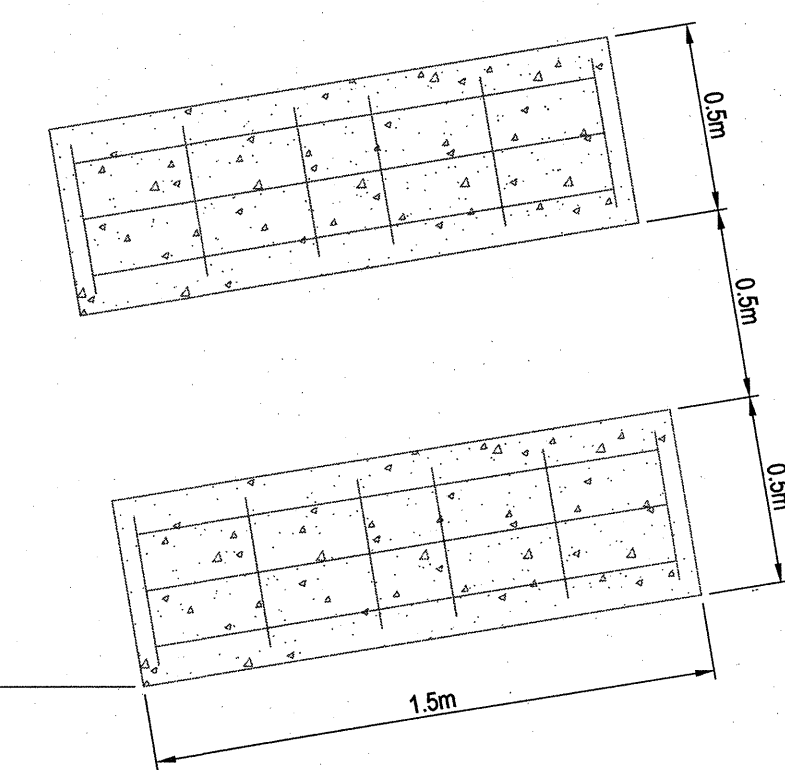


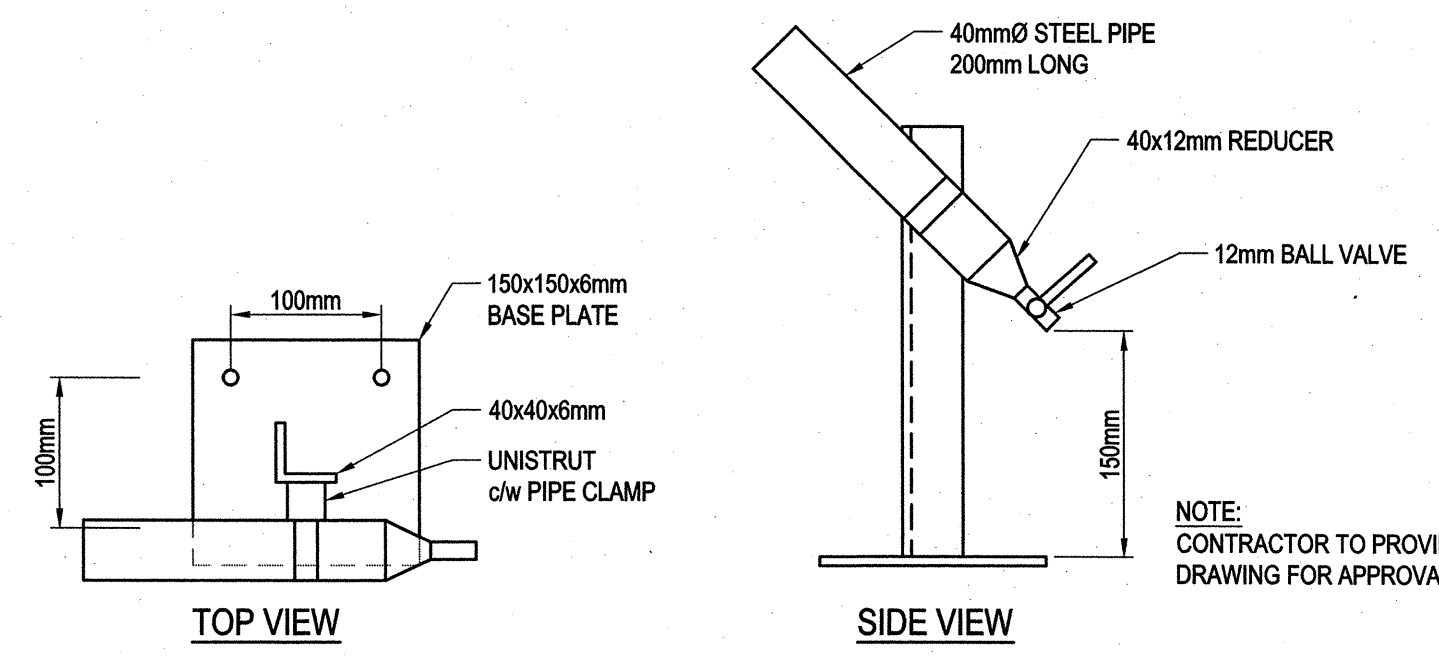
- NOTES
1. PROVIDE PIPE, FITTINGS AND SUPPORTS TO RECONFIGURE EQUIPMENT IN PUMP CABINET
 2. CLEAN ALL STEEL PIPE AND PAINT WITH 2 COATS GENERAL PAINT 16LINE (WHITE).

- NOTES
1. NEW 2200L AST SUPPLIED BY PARKS CANADA, TANK LOCATED ON A FLOAT APPROXIMATELY 150 METERS FROM THE EXISTING TANK SITE CONTRACTOR SHALL TRANSPORT TANK TO SITE.
 2. CONTRACTOR TO PROVIDE 2-40lb B.C FIRE EXTINGUISHERS AND MOUNT IN THE PUMP CABINET.
 3. CONTRACTOR TO PROVIDE 1-200LITRE SPILL RESPONSE KIT. WEST COAST SPILL SUPPLIES KI-ESK205-L (REPLACE DRAIN COVER WITH 1 BAG OIL GATOR) OR APPROVED ALTERNATE.
 4. CONTRACTOR TO PROVIDE 1-1.22x1.52x0.10 FOLDABLE MINI BERM c/w STORAGE BIN. WEST COAST SPILL SUPPLIES KI-FB-184 OR APPROVED ALTERNATE.
 5. CONTRACTOR TO PROVIDE WATER DRAW OFF PUMP c/w 2.0m OF DISCHARGE HOSE, FILL-RITE FRIS2 OR APPROVED ALTERNATE.

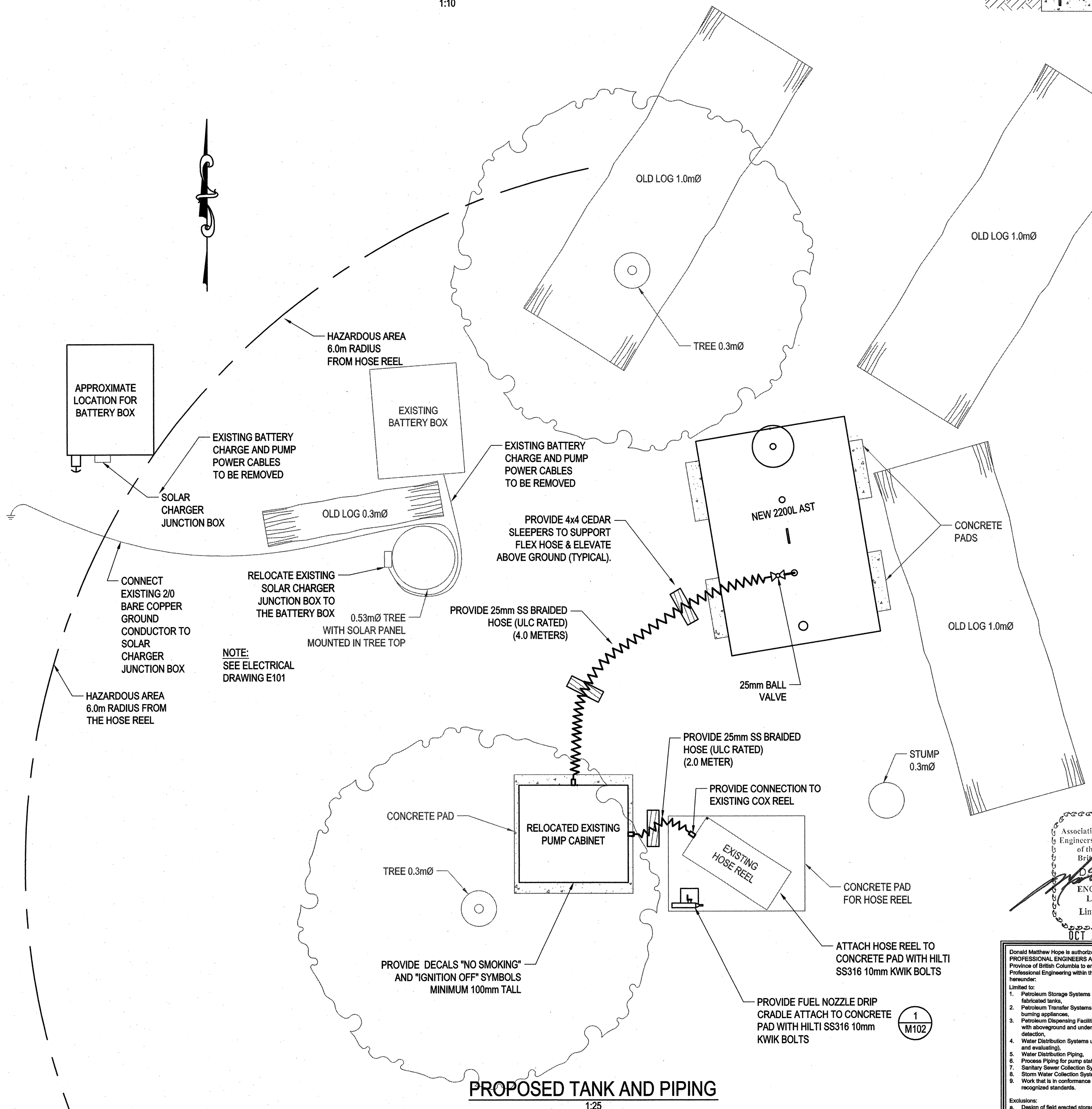
NEW 2200L AST
1:25



CONCRETE FOUNDATION
1:20



FUEL NOZZLE CRADLE
1:5



Association of Professional Engineers and Geoscientists of the Province of British Columbia
ENGINEERING LICENSEE
175994
OCT 3 0 2014

Donald Matthew Hope is authorized by the Association of Professional Engineers and Geoscientists of the Province of British Columbia to engage in the practice of Professional Engineering within the limited scope as specified hereunder:

Limited to:

1. Petroleum Storage Systems with ULC Standard shop fabricated tanks.
2. Petroleum Transfer Systems to auxiliary tanks and fuel burning appliances.
3. Petroleum Dispensing Facilities and product transfer areas with aboveground and underground piping and leak detection.
4. Water Distribution Systems up to 10,000 people (planning and evaluation).
5. Water Distribution Piping.
6. Process Piping for pump stations and water treatment plants.
7. Sanitary Sewer Collection Systems.
8. Storm Water Collection Systems.
9. Work that is in accordance with commonly published and recognized standards.

Exclusions:

- a. Design of field erected storage tanks, refining process equipment and bulk distribution facilities.
- b. Design of water and wastewater treatment plants and pump stations.

Revision/Description	Date/Date
5	
4	
3	ISSUED FOR TENDER 2014/10/29
2	ISSUED FOR 90% REVIEW 2014/08/11
1	ISSUED 60% REVIEW 2014/06/24
0	ISSUED FOR CLIENT REVIEW 2014/06/18

Client/client		
PWGSC PARKS CANADA		
60 SECOND BEACH ROAD SKIDEGATE BC		
Project title/Titre du projet		
ELLEN ISLAND AND HUXLEY ISLAND		
FUEL SYSTEM UPGRADES		
Consultant Signature Only		
Designed by/Concept par DMH		
Drawn by/Dessiné par SG		
PWGSC Project Manager/Administrateur de Projets TP5GC TOM DUNPHY		
Regional Manager, Architectural and Engineering Services Gestionnaire régionale, Services d'architectural et de génie, TP5GC		
Drawing title/Titre du dessin		
ELLEN ISLAND PROPOSED SITE PLAN TANK PIPING AND DETAILS		
Project No./No. du projet R.068241.001	Sheet/Feuille M102 3 OF 6	Revision no./ La Révision no. 2