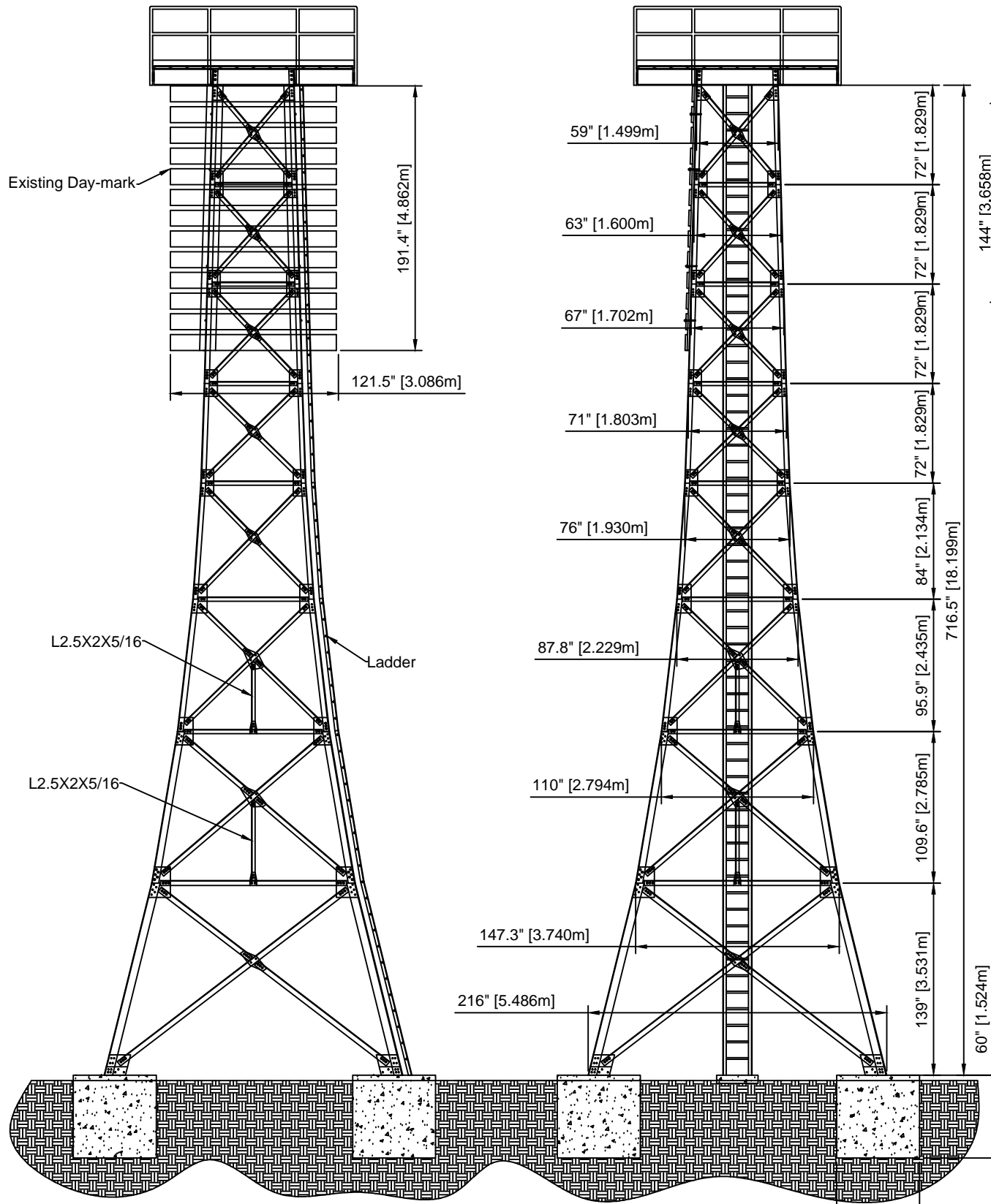


C

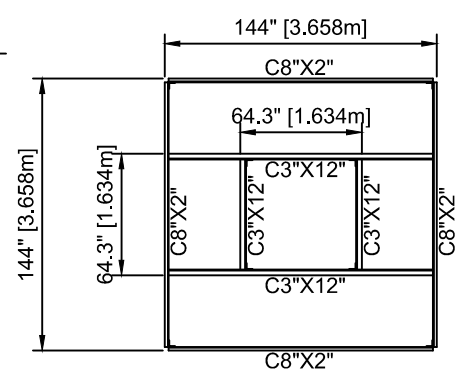
B

A

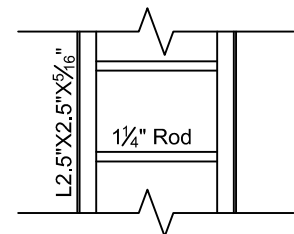
Vertical	L6X6X3/8	L5X5X3/8	L4X4X3/8	L3.5X3.5X3/8
Horizontal	L5X3.5X3/8	L4X3X3/8	L3X3X3/8	L2.5X3X3/8
Diagonal	L3X4X3/8	L3X3.5X3/8	L3X3X3/8	L2.5X3X3/8



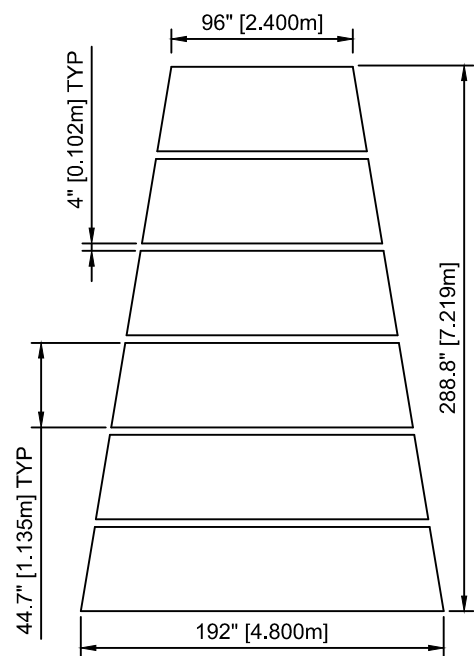
TOWER SECTIONS



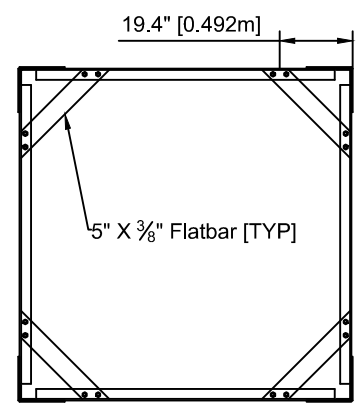
UPPER PLATFORM GRILLAGE DETAIL



LADDER DETAILS [TYP]



ALTERNATE DAYMARK
CCG intends to install this daymark on the existing tower (with the top of daymark aligning with the top of existing tower). The purpose of the structural analysis is to confirm the tower's capacity is adequate for the additional loading resultant from the daymark upgrade.



TYPICAL DIAPHRAGM DETAIL
Note that the diaphragm bracing detailed herein is present at every horizontal

GENERAL NOTES:
- All connections are made using 3/4" bolts or rivets.
- Upper platform is decked using 2" X 12" Expanded metal perforated decking, diamond pattern.
- Age of tower is estimated at 100 years (1913). Use $F_y = 190$ MPa and $F_u = 380$ MPa for structural analysis.
- Foundations shall be assumed to be as shown.

Vendor / Sous-traitant

1	METRIC DIMENSIONS CORRECTED	DJ	2015-01-06
0	DWG Initiated	BY	2012-12-17
rev	description	by	date
	par		

Asset - Actif
LL #866
Port McNicoll Front Tower

Drawing - Dessin
Port McNicoll
Take-off Dimensions

drawing no. - no. dessin
B. YOUNG 2012-12-17

designed - conception
date

checked - vérifié
D. JIBB 2012-12-17

approved - approuvé
B. YOUNG 2012-12-17

CCG project no. - no. projet GCC
EWA-8010-20-0343 scale - échelle
NTS

drawing no. - no. dessin
11146-PRI sheet-feuille
01/01 rev
1